

V&V Reference Report

L2 ASCDS Version : 8.4.4

Observation 8040 - L2 Version 2
Chandra X-Ray Center

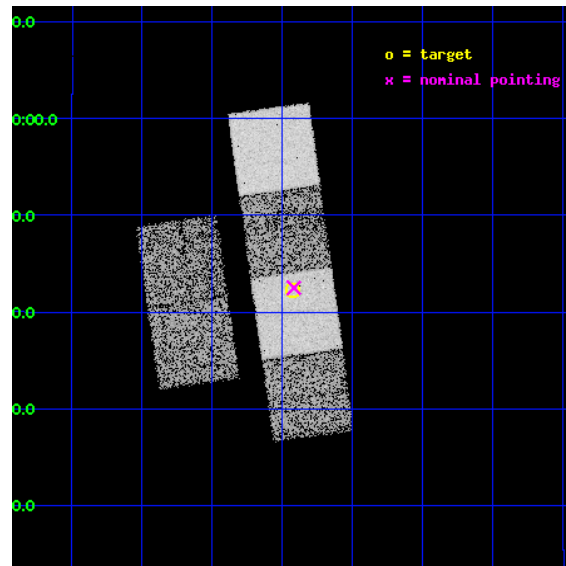
L2 Processing Date : May 9 2012

Contents

1	Front	2
2	OBI	3
2.1	OBI	3
2.1.1	Images	3
2.1.2	Bias	3
2.1.3	Parameters	4
2.1.4	Events	4
2.2	Compared Parameters	5
2.3	Aspect	6
2.4	Star Slots	9
2.4.1	Slot 3	9
2.4.2	Slot 4	10
2.4.3	Slot 5	11
2.4.4	Slot 6	12
2.4.5	Slot 7	13
2.5	FID Slots	14
2.5.1	Slot 0	14
2.5.2	Slot 1	15
2.5.3	Slot 2	16
A	Summary	17
A.1	Status	17
A.2	Comments	17

1 Front

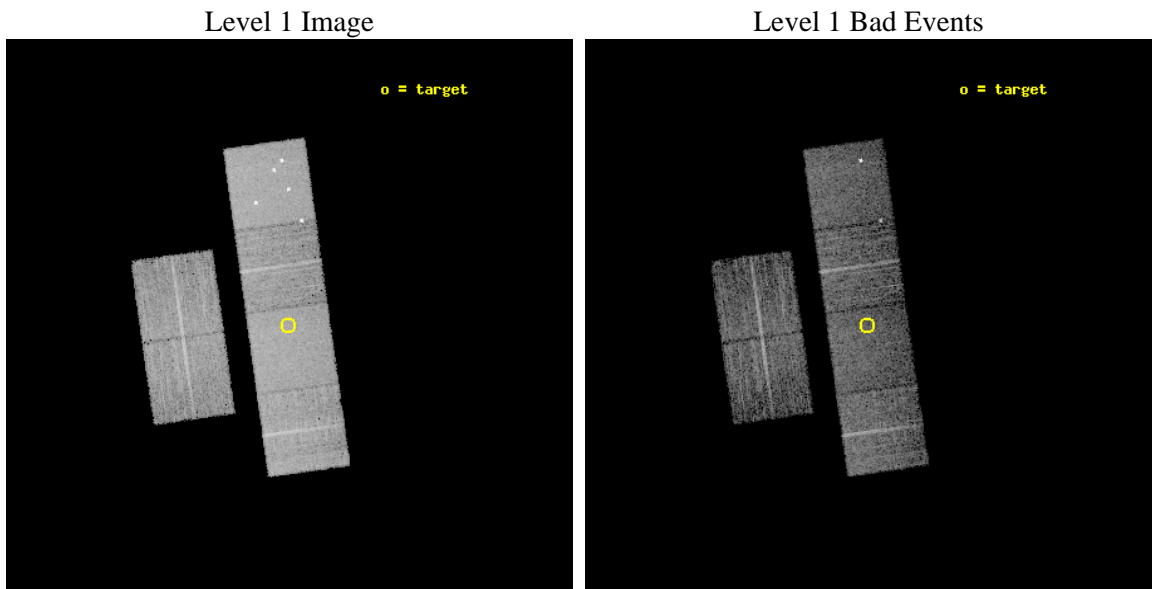
seq_num	900581	Sequence number
obs_id	8040	Observation id
title	The Duty Cycle of Supermassive Black Holes: X-raying Virgo	Proposa
observer	Prof Tommaso Treu	Principal investigator
object	759	Source name
dtcycle	0	
cycle	P	events from which exps? Prim/Second/Both
ra_targ	186.23125	Observer's specified target RA [deg]
dec_targ	11.704167	Observer's specified target Dec [deg]
ra_nom	186.2292866346	Nominal RA [deg]
dec_nom	11.708613144064	Nominal Dec [deg]
roll_nom	82.006966921161	Nominal Roll [deg]
revision	2	Processing version of data
ontime	4956.7999815941	Sum of GTIs [s]
livetime	4894.0339956005	Livetime [s]
ontime2	4956.7999815941	Sum of GTIs [s]
ontime3	4956.7939875722	Sum of GTIs [s]
ontime5	4956.7999815941	Sum of GTIs [s]
ontime6	4956.7999815941	Sum of GTIs [s]
ontime7	4956.7999815941	Sum of GTIs [s]
ontime8	4953.5119076371	Sum of GTIs [s]
l2events	77924	Number of level 2 events



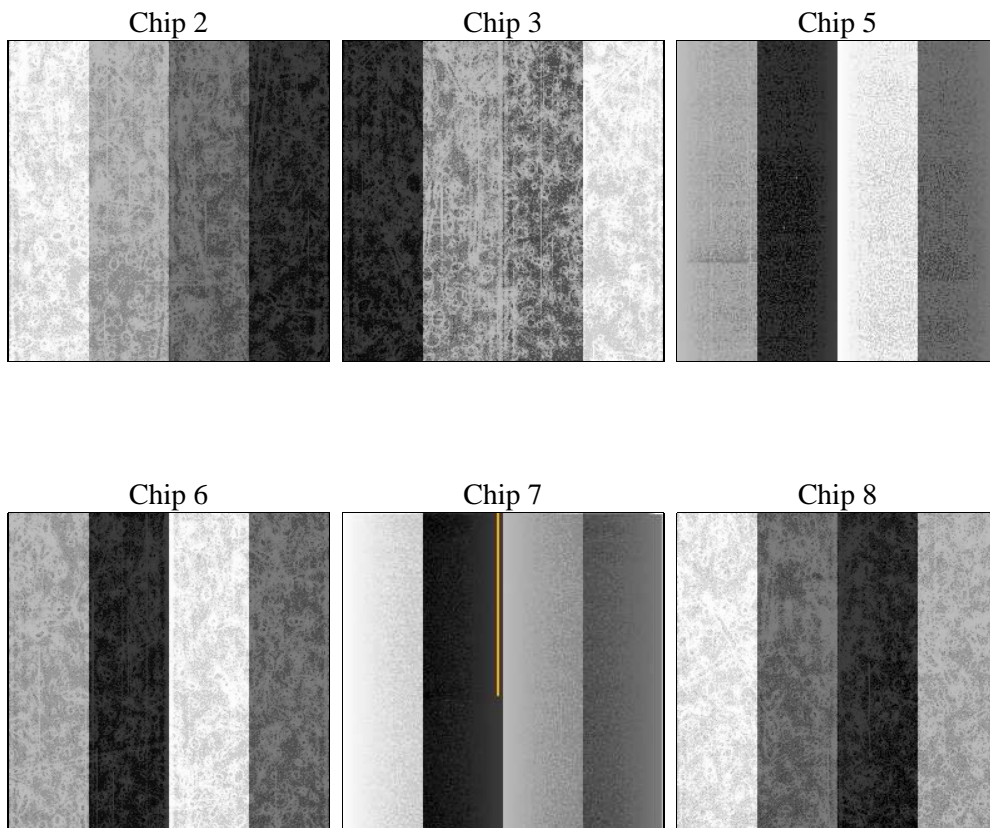
2 OBI

2.1 OBI

2.1.1 Images



2.1.2 Bias



2.1.3 Parameters

obi_num	0	Obi number	sched_exp_time	5200.000000	[s] Scheduled observation exposure time
ascdsver	8.4.4	Processing system revision	ontime	4956.7999815941	Sum of GTIs [s]
caldsver	4.4.9	 	ontime2	4956.7999815941	Sum of GTIs [s]
date	2012-05-09T18:14:04	Date and time of file creation	ontime3	4956.7939875722	Sum of GTIs [s]
revision	2	Processing version of data	ontime5	4956.7999815941	Sum of GTIs [s]
			ontime6	4956.7999815941	Sum of GTIs [s]
			ontime7	4956.7999815941	Sum of GTIs [s]
			ontime8	4953.5119076371	Sum of GTIs [s]
			l1events	348741	Number of level 1 events

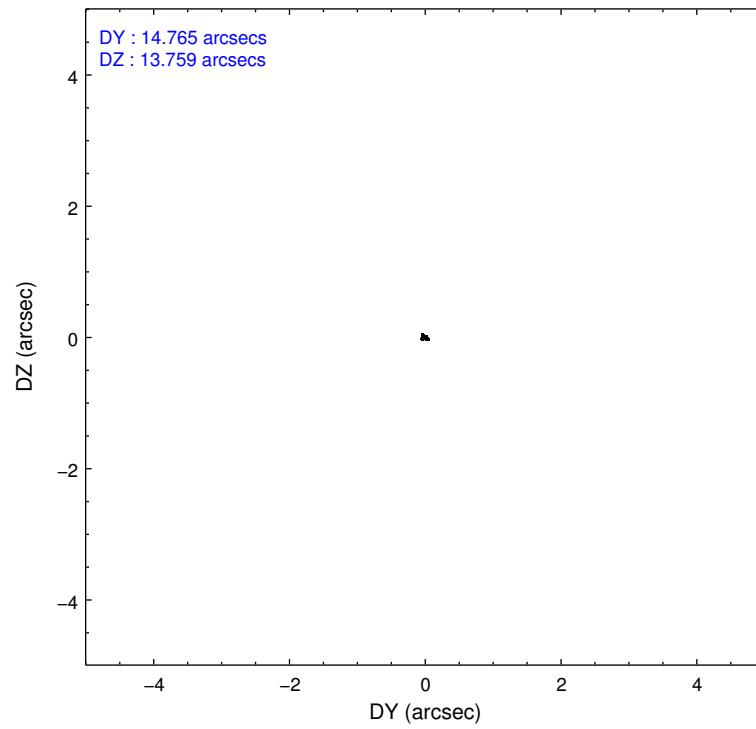
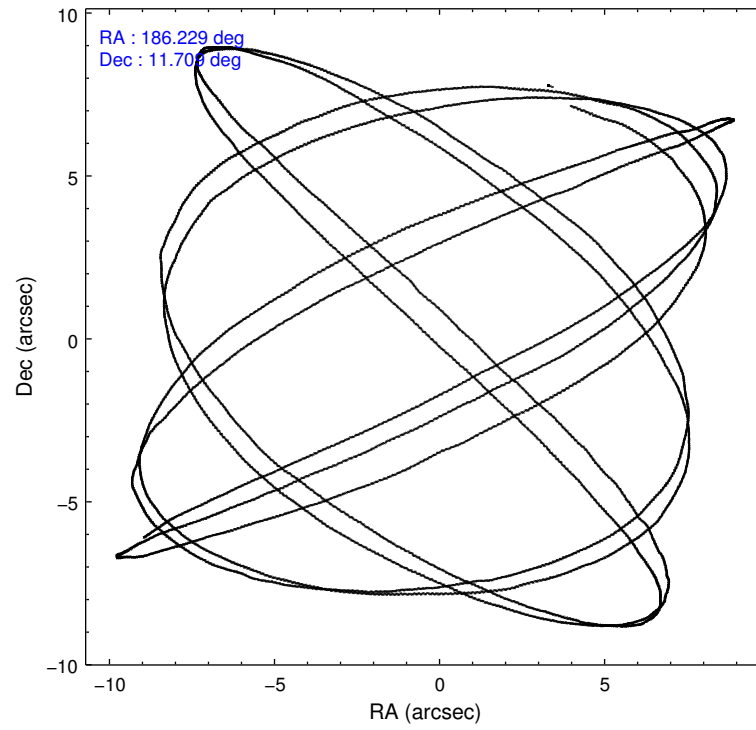
2.1.4 Events

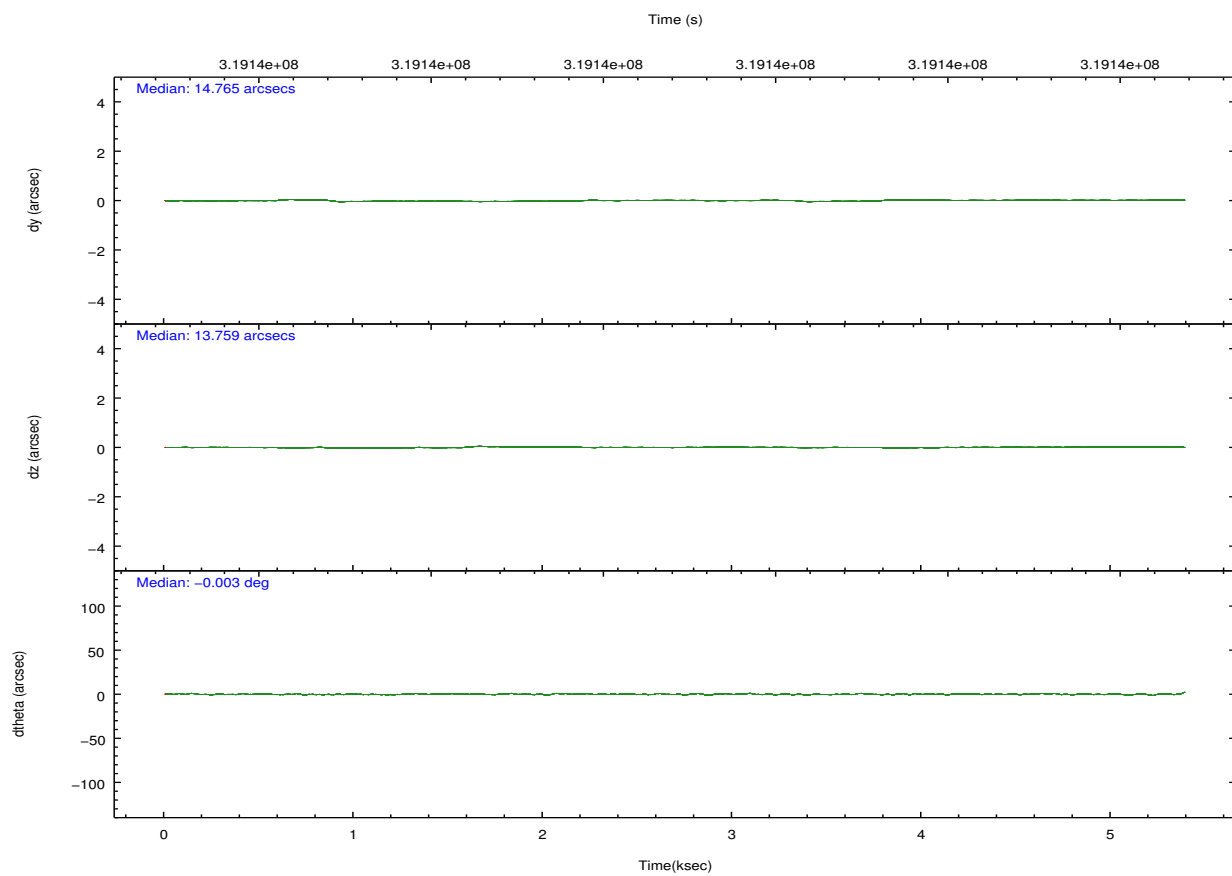
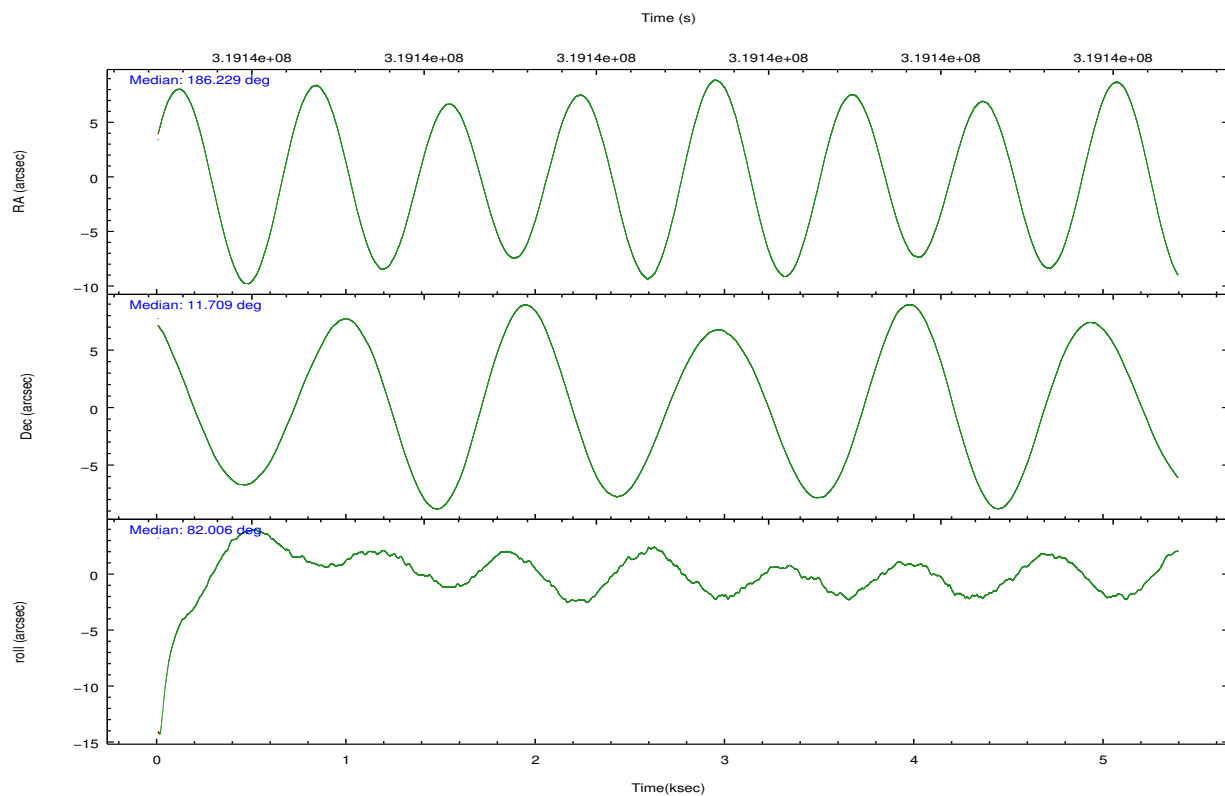
	ccd 2	ccd 3	ccd 5	ccd 6	ccd 7	ccd 8		ccd 2	ccd 3	ccd 5	ccd 6	ccd 7	ccd 8
level 1 events	47401	46619	77625	47676	65602	63818	grade 0 events	2418	2655	5880	2293	2311	4435
rejected events	41974	40829	40931	41813	38575	49724		5%	5%	7%	4%	3%	6%
rejected %	88%	87%	52%	87%	58%	77%	grade 1 events	30	31	131	29	83	51
								0%	0%	0%	0%	0%	0%
							grade 2 events	1165	1087	10061	1319	5637	3185
								2%	2%	12%	2%	8%	4%
							grade 3 events	471	524	1113	562	2213	1470
								0%	1%	1%	1%	3%	2%
							grade 4 events	462	543	1022	545	2199	1408
								0%	1%	1%	1%	3%	2%
							grade 5 events	1839	2195	5366	2154	5979	2891
								3%	4%	6%	4%	9%	4%
							grade 6 events	919	988	18673	1149	14703	3604
								1%	2%	24%	2%	22%	5%
							grade 7 events	40097	38596	35379	39625	32477	46774
								84%	82%	45%	83%	49%	73%

2.2 Compared Parameters

Parameter	Planned	Actual	Parameter	Planned	Actual
Instrument	ACIS	ACIS	Obspar format version number	7	7
Detector	ACIS-235678	ACIS-235678	Obspar file type	PREDICTED	ACTUAL
Grating	NONE	NONE	Obspar update status	NONE	UPDATED
Data mode	FAINT	FAINT	CCD I0 on	N	N
Observation mode	POINTING	POINTING	CCD I1 on	N	N
[deg] Pointing RA	186.240077	186.2292866345964	CCD I2 on	O1	Y
[deg] Pointing Dec	11.683396	11.70861314406414	CCD I3 on	O2	Y
[deg] Pointing Roll	81.848165	82.00696692116111	CCD S0 on	N	N
[mm] SIM focus pos	-0.684267	-0.6828225247311905	CCD S1 on	O3	Y
[mm] SIM defocus	0	0.001444936568705701	CCD S2 on	Y	Y
[mm] SIM translation stage pos	-190.132523	-190.1425803651734	CCD S3 on	Y	Y
[mm] SIM translation stage offset	0	0.01005778216563158	CCD S4 on	O4	Y
[s] Observation start time (MET)	319135908.184000	319135457.99004	CCD S5 on	N	N
Observation start date	2008-02-11T16:50:43	2008-02-11T16:44:17	Number of optional ACIS chips dropped	0	0
[s] Observation end time (MET)	319141108.184000	319141274.35282	On-chip summing requested	N	N
Observation end date	2008-02-11T18:17:23	2008-02-11T18:21:14	Subarray requested	NONE	NONE
Read mode	TIMED	TIMED	Alternating exposures requested	N	N
			[s] Primary exposure time	0.000000	3.2

2.3 Aspect



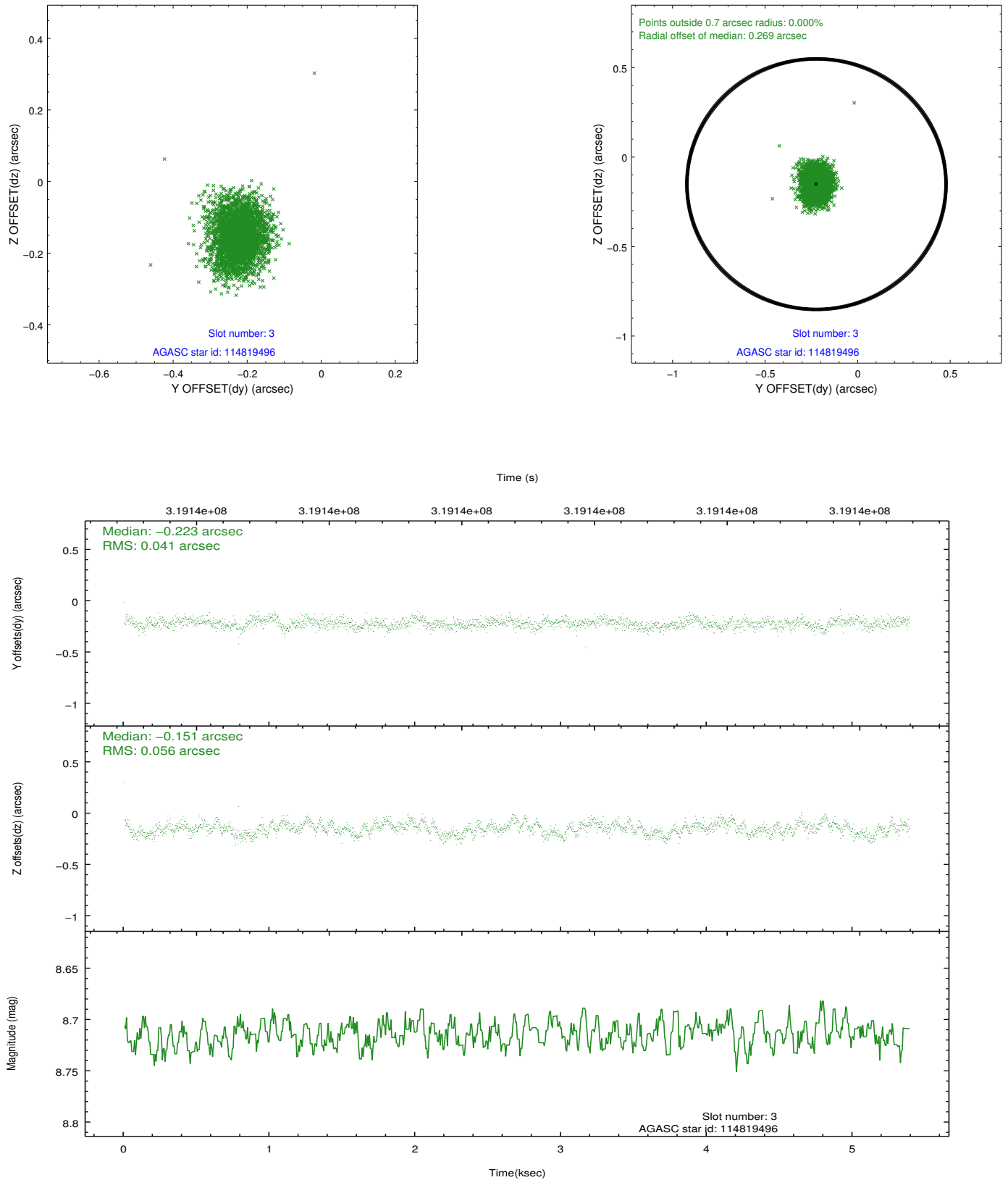


Slot Statistics

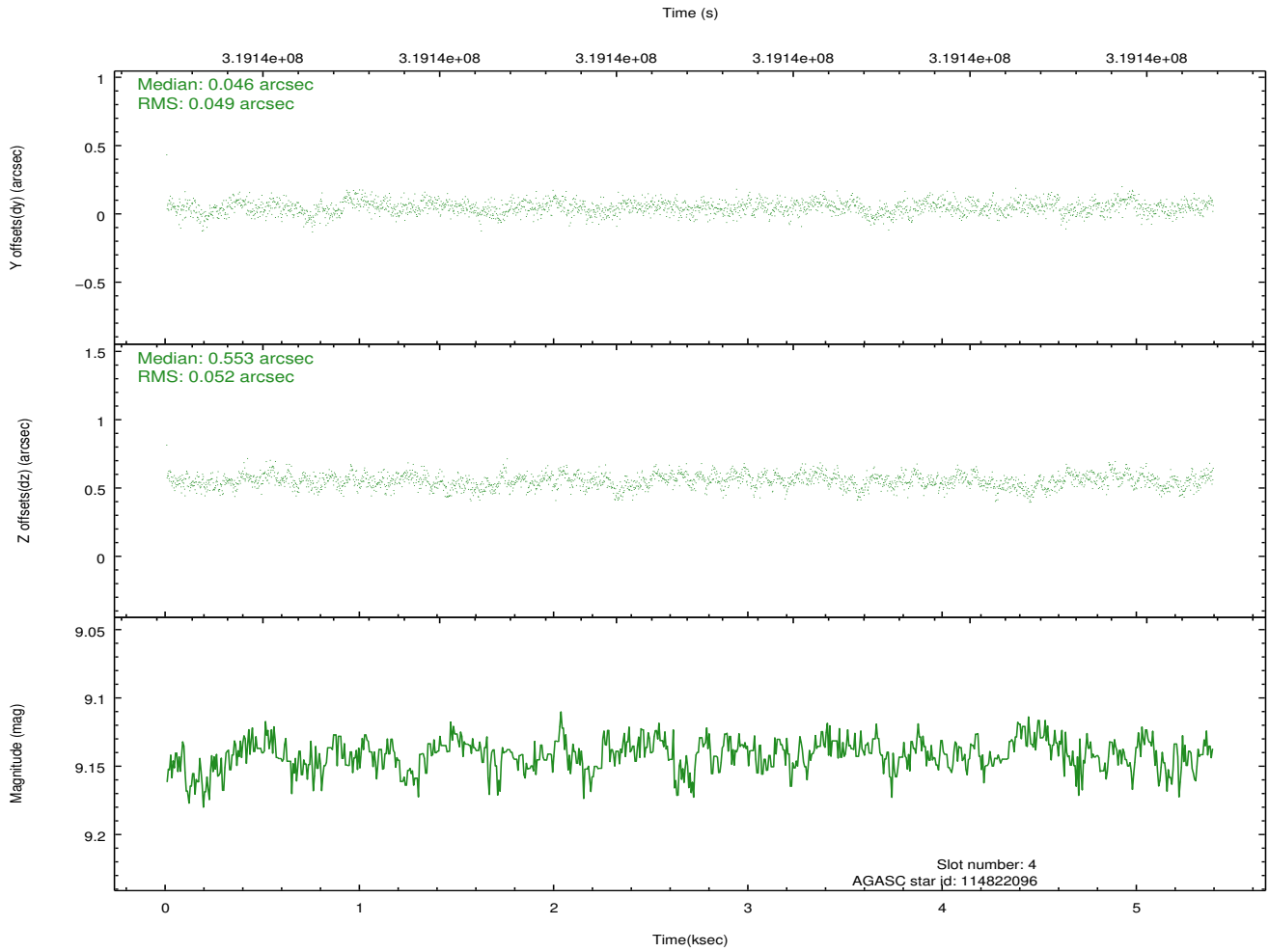
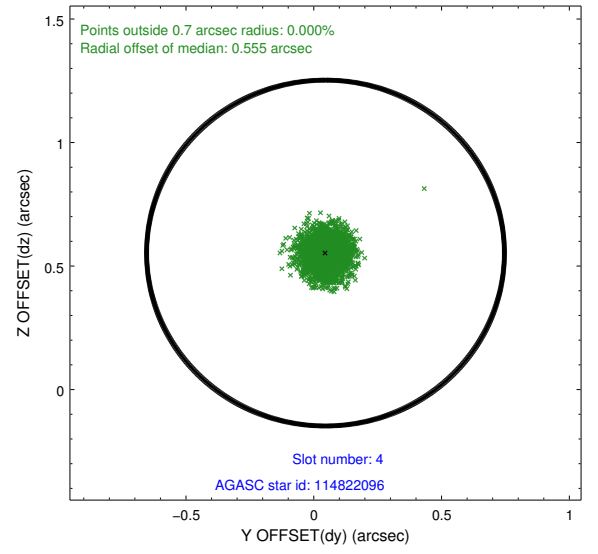
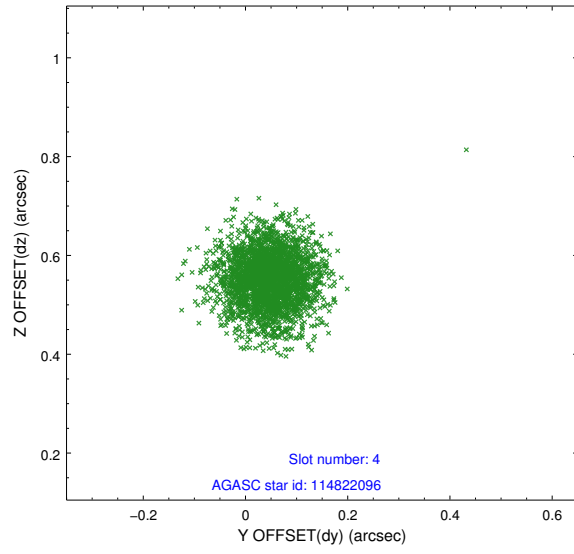
slot	status	id	mag	n_pts	med_dy	med_dz	dr1	dr2	ra	dec	mean_y	mean_z
0	FID	ACIS-S-2	7.10	1315	-0.120	-0.073	0.006	0.011	0.000000	0.000000	-767.87	-1735.11
1	FID	ACIS-S-4	7.19	1315	0.119	0.070	0.006	0.010	0.000000	0.000000	2145.16	172.30
2	FID	ACIS-S-6	7.34	1315	-0.027	0.010	0.007	0.012	0.000000	0.000000	395.68	810.94
3	GUIDE	114819496	8.71	2628	-0.223	-0.151	0.073	0.118	185.927253	11.920483	689.21	1212.32
4	GUIDE	114822096	9.14	2626	0.046	0.553	0.076	0.124	186.117793	11.168056	-1897.12	166.03
5	GUIDE	114823144	9.24	2624	0.057	-0.478	0.084	0.138	185.759442	11.403801	-1236.03	1536.71
6	GUIDE	114954440	9.19	2625	0.088	-0.014	0.091	0.151	186.915066	12.219118	2248.59	-2076.83
7	GUIDE	114957008	8.25	2628	0.034	0.084	0.116	0.167	186.894794	12.099160	1812.12	-2068.48

2.4 Star Slots

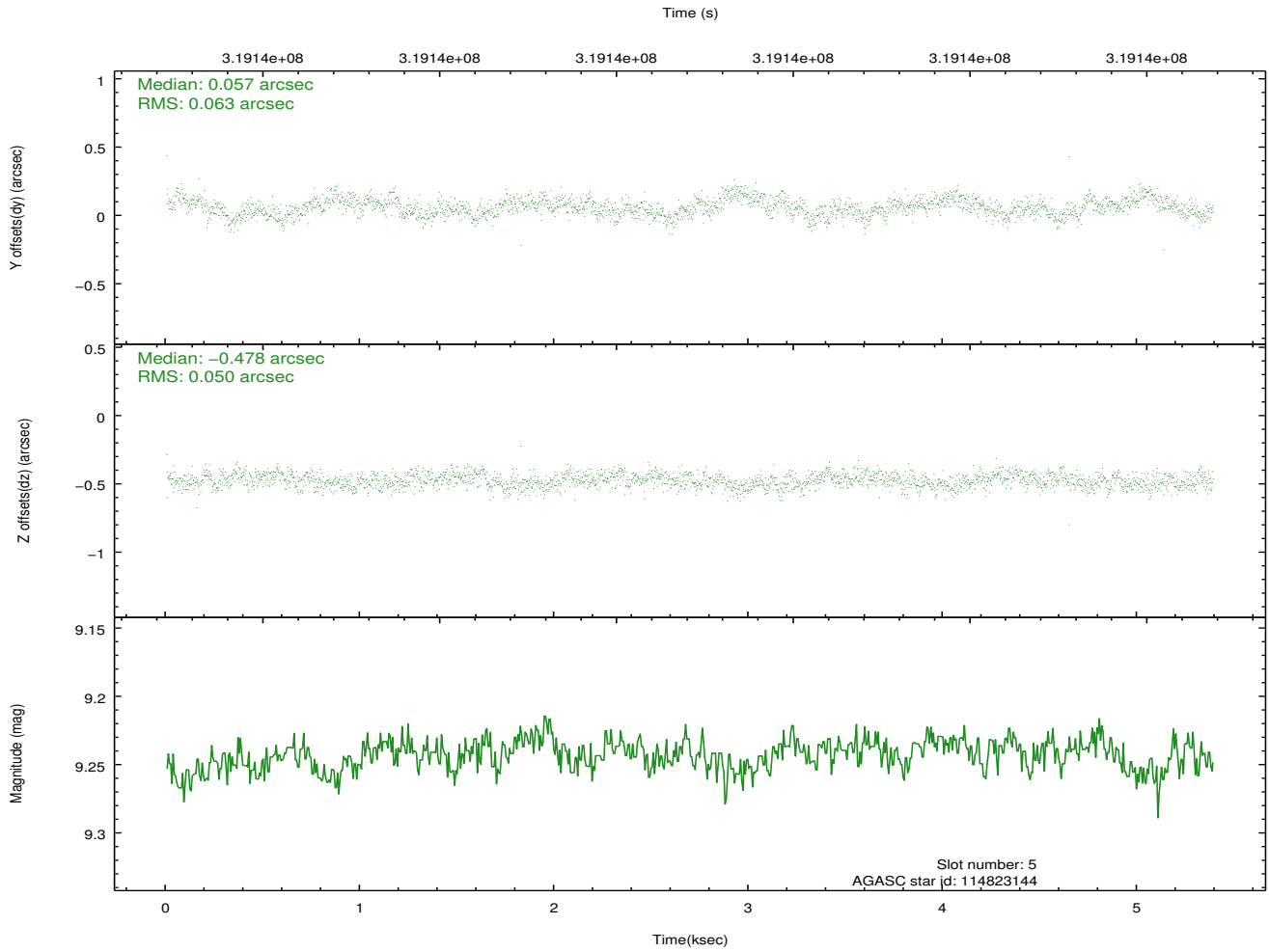
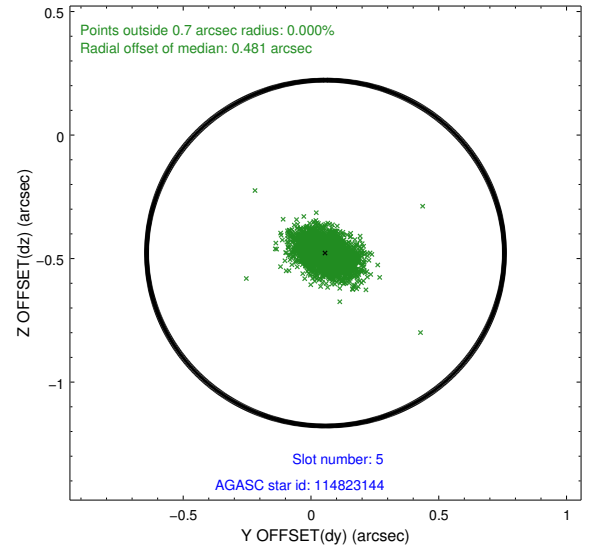
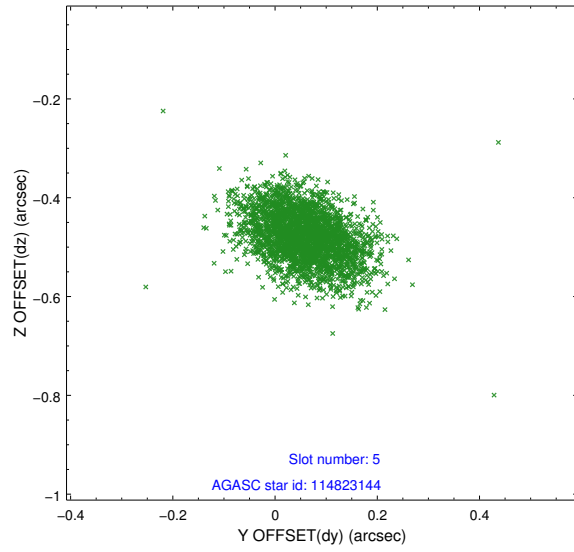
2.4.1 Slot 3



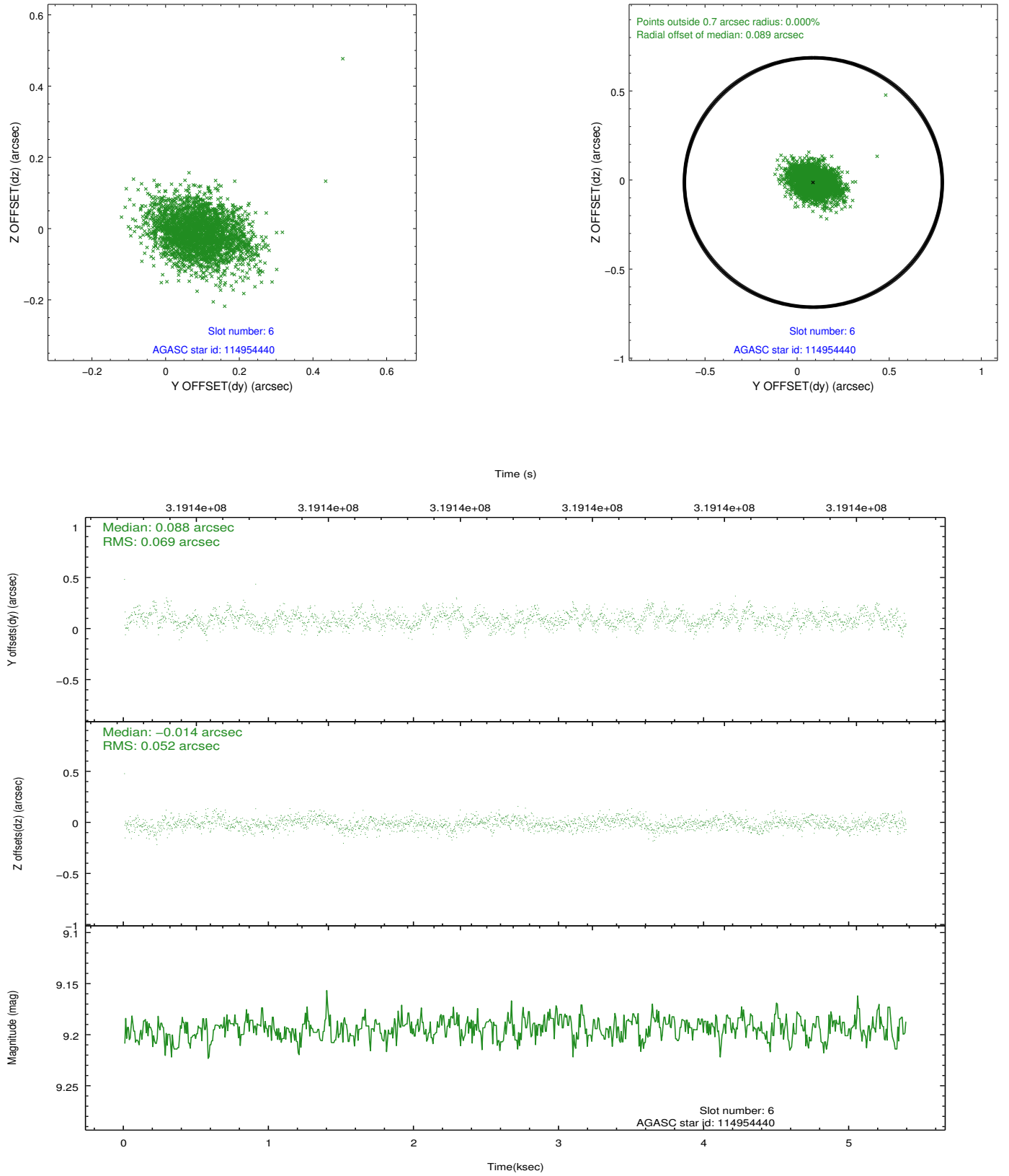
2.4.2 Slot 4



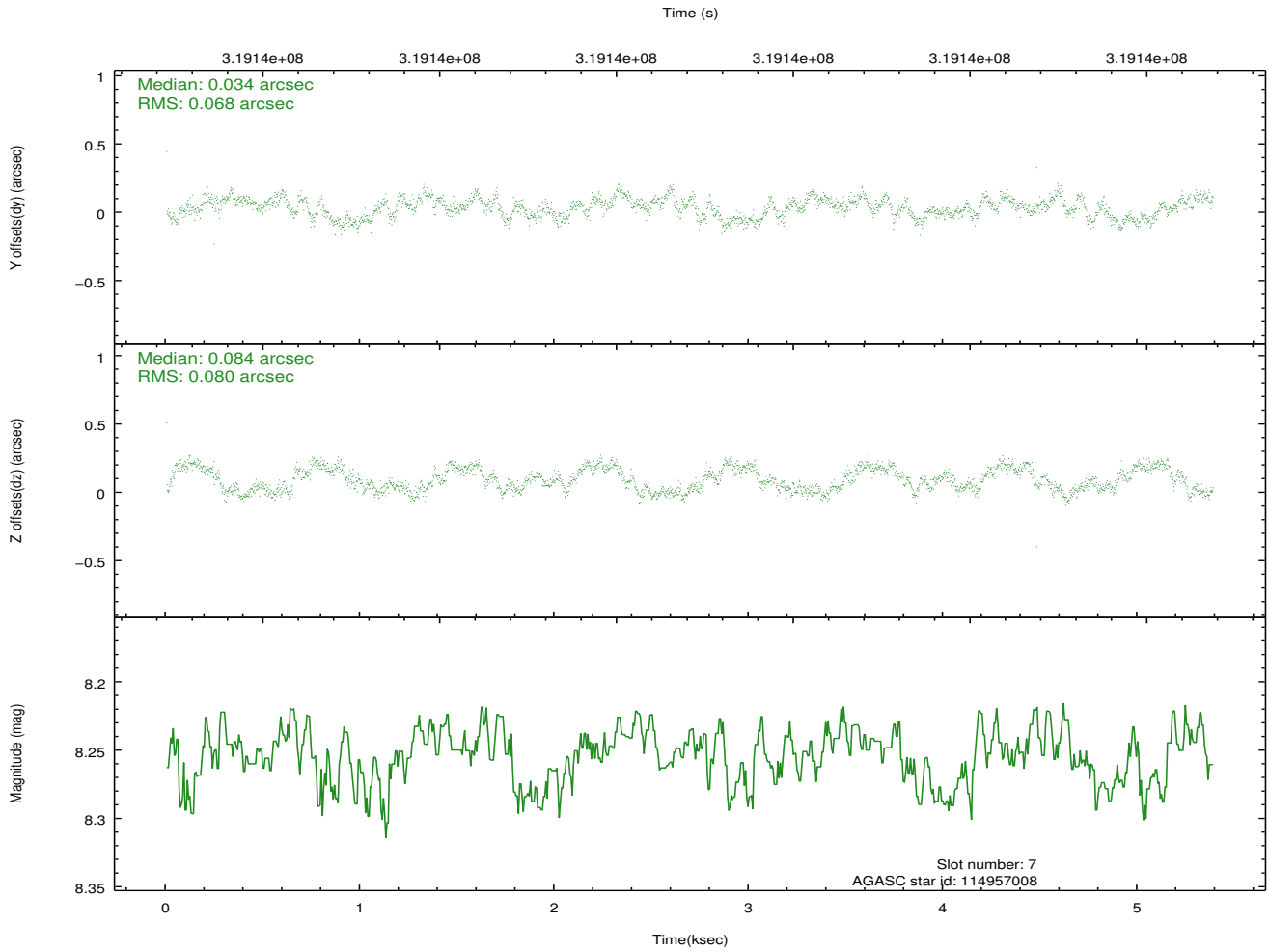
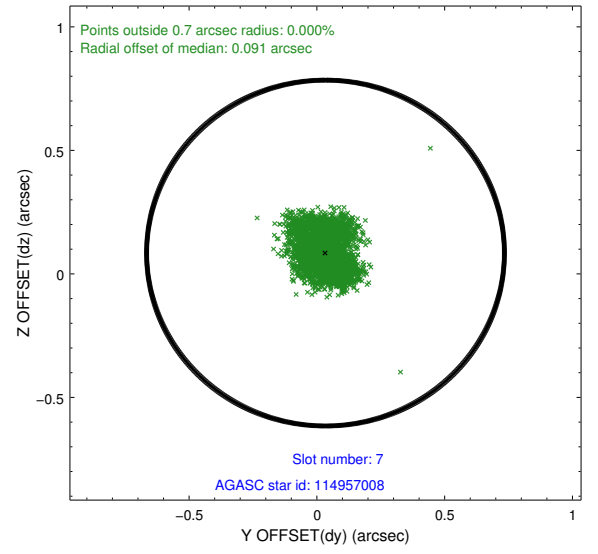
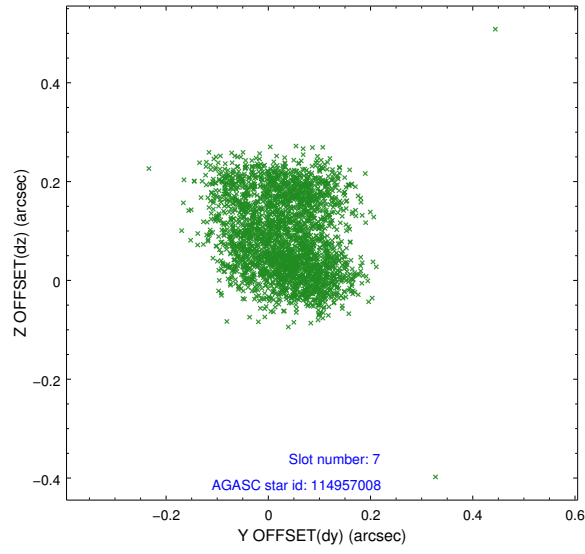
2.4.3 Slot 5



2.4.4 Slot 6

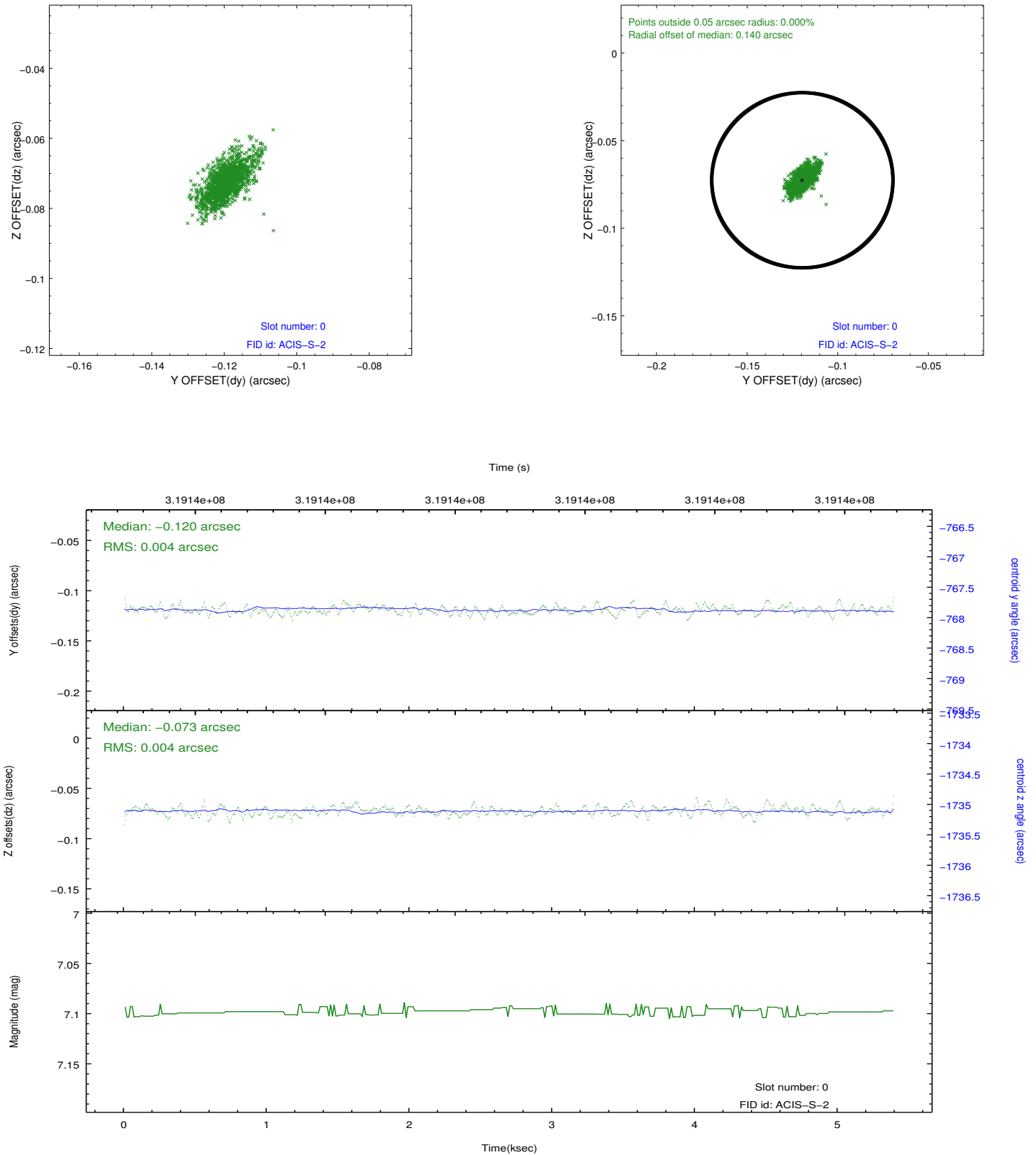


2.4.5 Slot 7

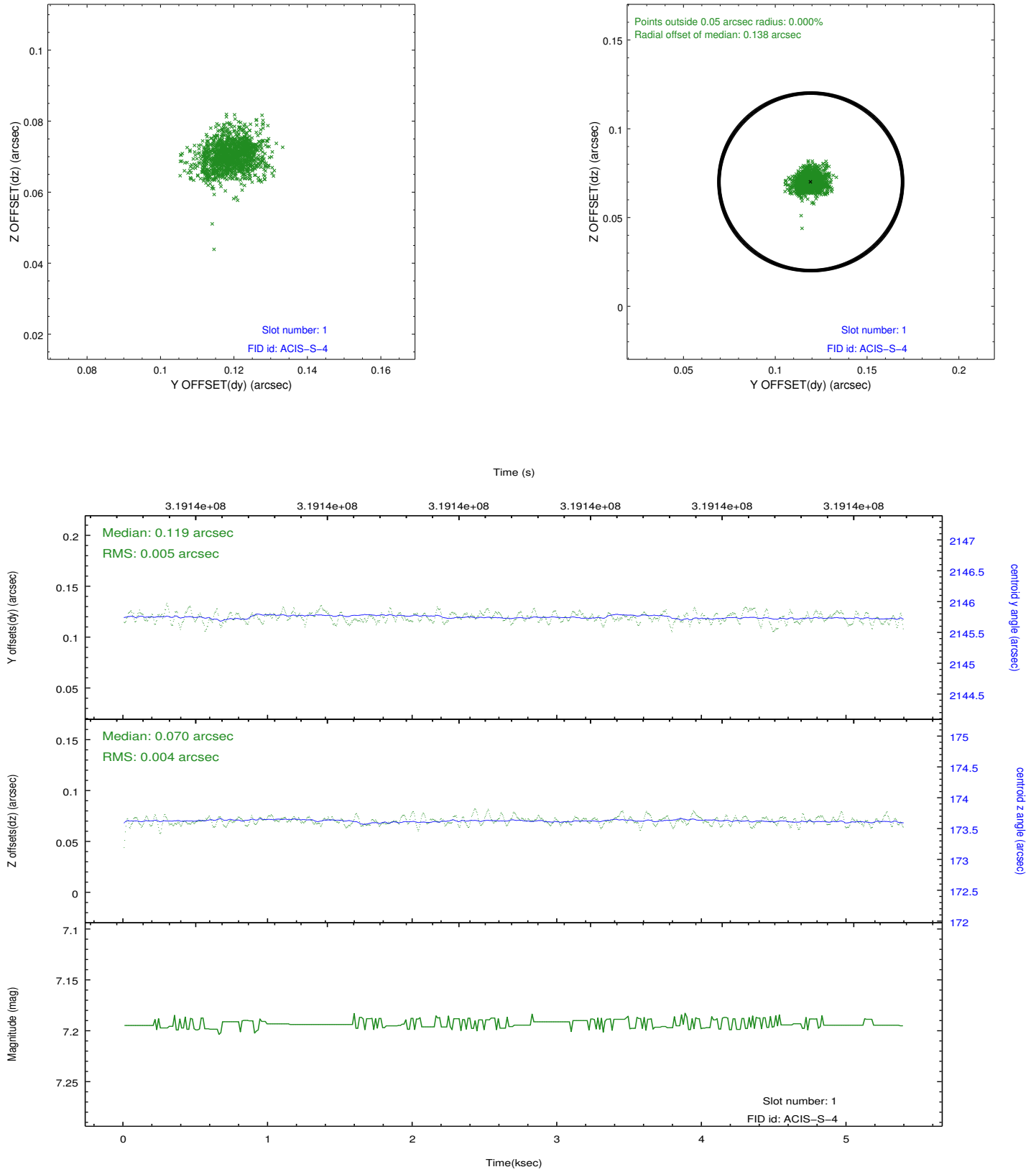


2.5 FID Slots

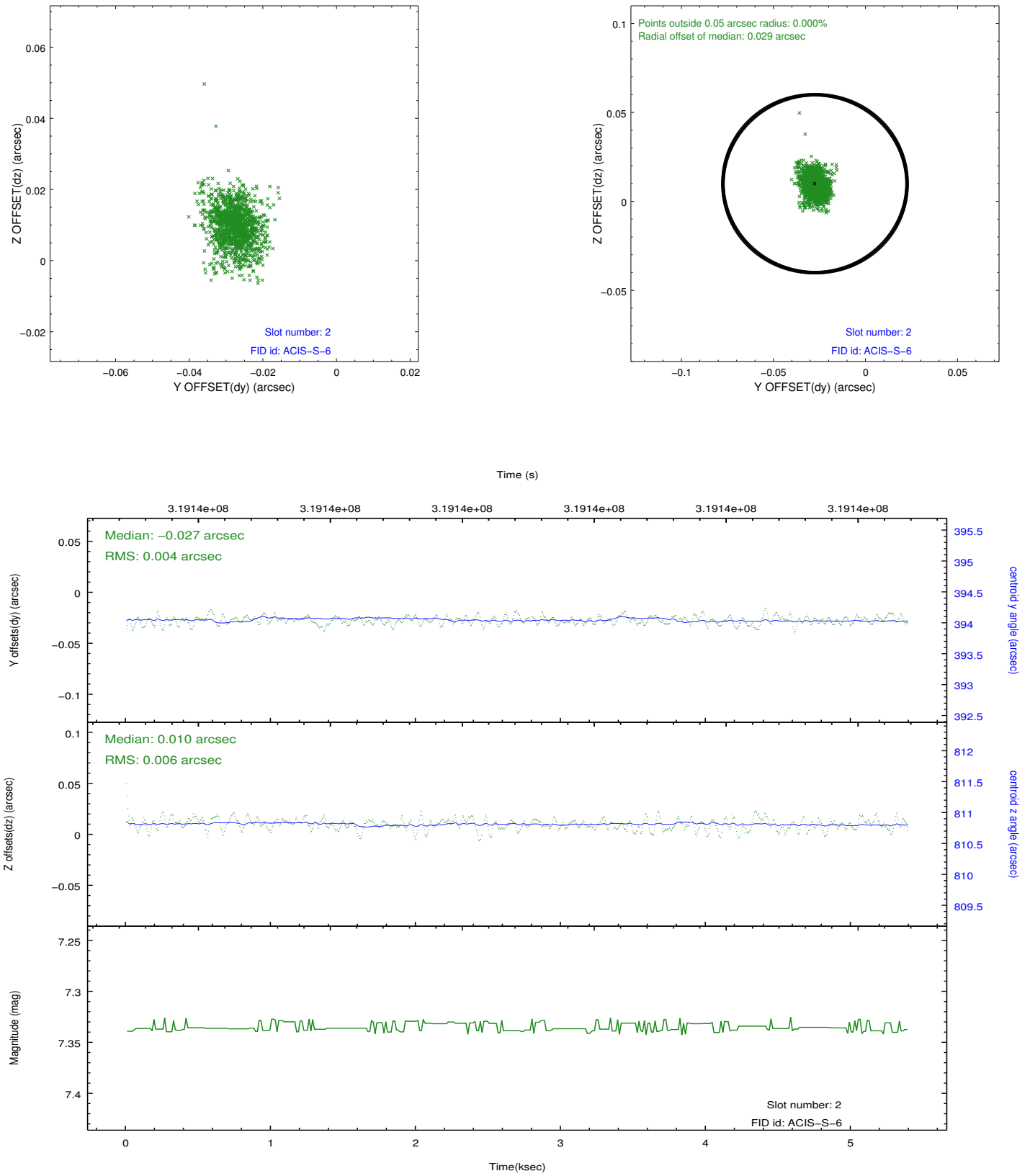
2.5.1 Slot 0



2.5.2 Slot 1



2.5.3 Slot 2



A Summary

A.1 Status

V&V Scientist	Jen Lauer
V&V Date (YYYY-MM-DD)	2012.05.11
V&V Edition	1
V&V Disposition and Status	OK
V&V Charge Time	4.95679998

A.2 Comments

Joint proposal: Spitzer