

V&V Reference Report

L2 ASCDS Version : 8.4.4

Observation 8269 - L2 Version 4
Chandra X-Ray Center

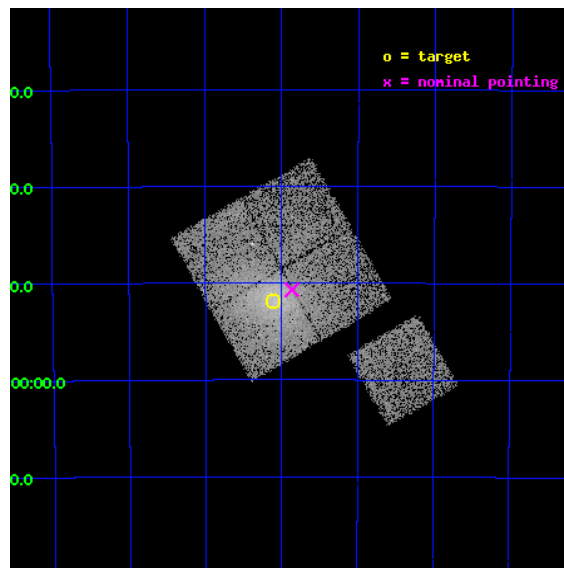
L2 Processing Date : Apr 22 2012

Contents

1	Front	2
2	OBI	3
2.1	OBI	3
2.1.1	Images	3
2.1.2	Bias	3
2.1.3	Parameters	4
2.1.4	Events	4
2.2	Compared Parameters	5
2.3	Aspect	6
2.4	Star Slots	9
2.4.1	Slot 3	9
2.4.2	Slot 4	10
2.4.3	Slot 5	11
2.4.4	Slot 6	12
2.5	FID Slots	13
2.5.1	Slot 0	13
2.5.2	Slot 1	14
2.5.3	Slot 2	15
A	Summary	16
A.1	Status	16
A.2	Comments	16

1 Front

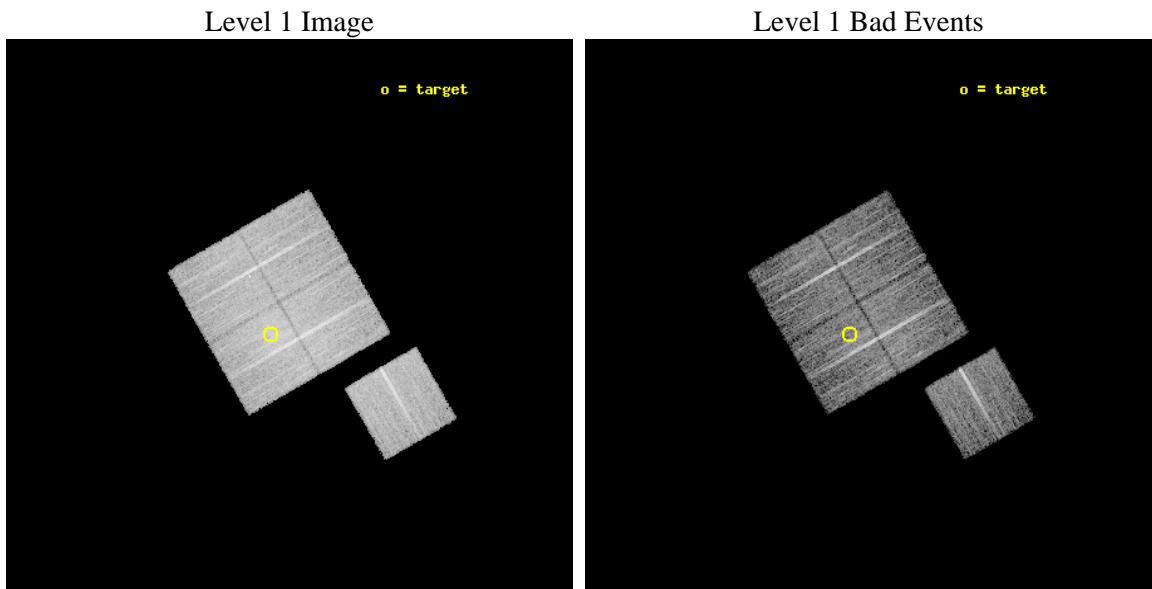
seq_num	800664	Sequence number
obs_id	8269	Observation id
title	Chandra observations of flux-limited sample of low-redshift galaxy clusters - A	Proposal title
observer	Dr. Stephen Murray	Principal investigator
object	A3822	Source name
dtcycle	0	
cycle	P	events from which exps? Prim/Second/Both
ra_targ	328.52625	Observer's specified target RA [deg]
dec_targ	-57.865556	Observer's specified target Dec [deg]
ra_nom	328.46653322495	Nominal RA [deg]
dec_nom	-57.845077461537	Nominal Dec [deg]
roll_nom	150.12051711682	Nominal Roll [deg]
revision	4	Processing version of data
ontime	8174.6590926051	Sum of GTIs [s]
livetime	8067.8511534638	Livetime [s]
ontime0	8177.8000628948	Sum of GTIs [s]
ontime1	8177.8000628948	Sum of GTIs [s]
ontime2	8177.8000628948	Sum of GTIs [s]
ontime3	8174.6590926051	Sum of GTIs [s]
ontime6	8177.8000628948	Sum of GTIs [s]
l2events	44278	Number of level 2 events



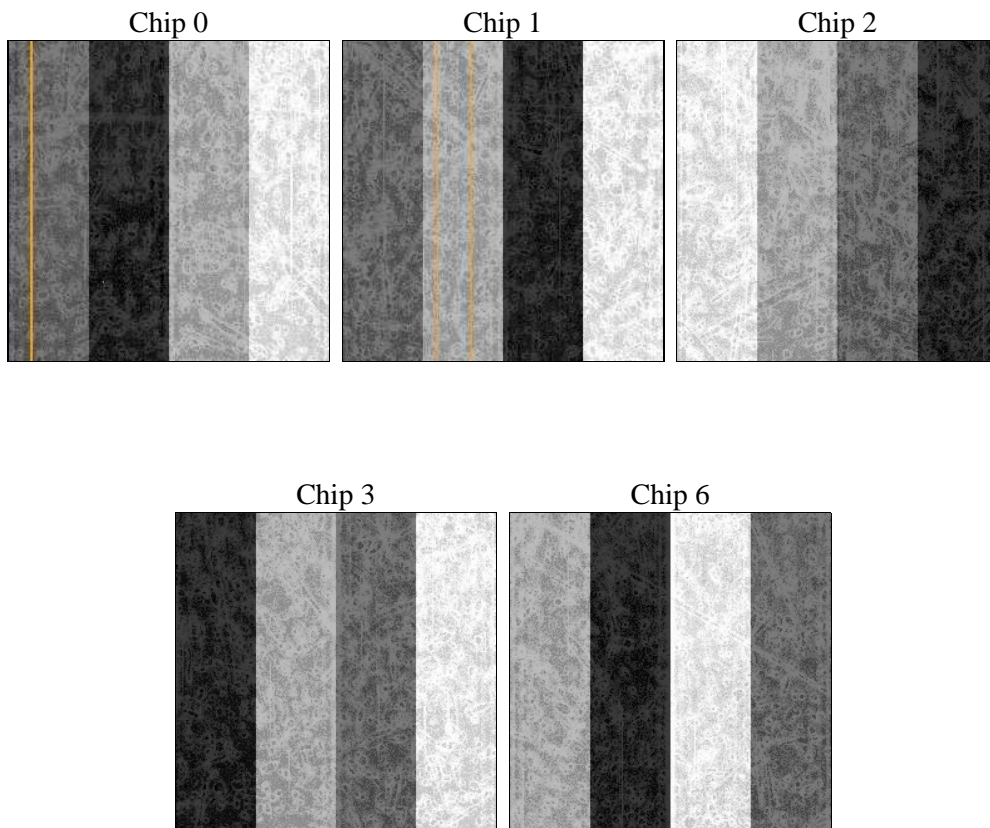
2 OBI

2.1 OBI

2.1.1 Images



2.1.2 Bias



2.1.3 Parameters

obi_num	0	Obi number	sched_exp_time	8000.000000	[s] Scheduled observation exposure time
ascdsver	8.4.4	Processing system revision	ontime	8174.6590926051	Sum of GTIs [s]
caldsver	4.4.9	 	ontime0	8177.8000628948	Sum of GTIs [s]
date	2012-04-22T13:47:46	Date and time of file creation	ontime1	8177.8000628948	Sum of GTIs [s]
revision	4	Processing version of data	ontime2	8177.8000628948	Sum of GTIs [s]
			ontime3	8174.6590926051	Sum of GTIs [s]
			ontime6	8177.8000628948	Sum of GTIs [s]
			l1events	330880	Number of level 1 events

2.1.4 Events

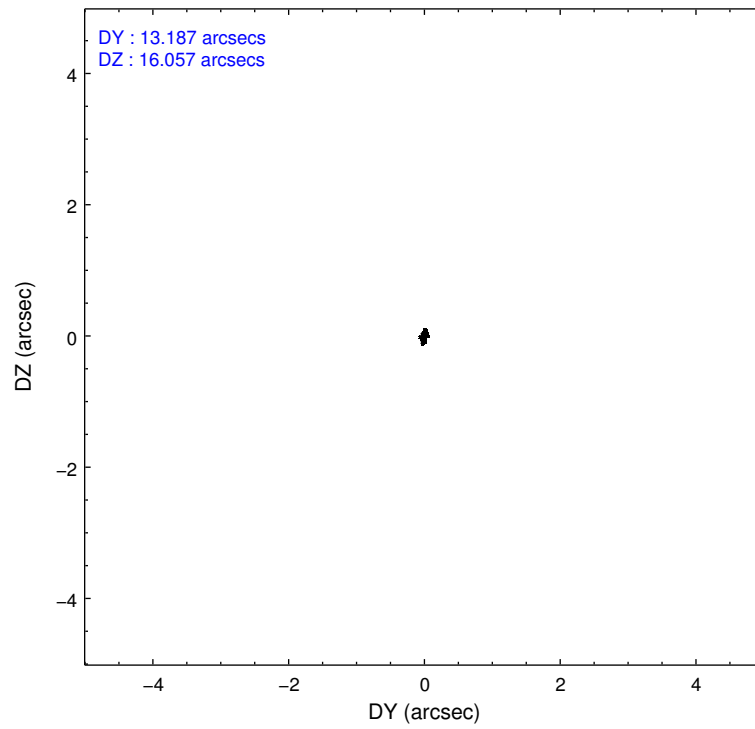
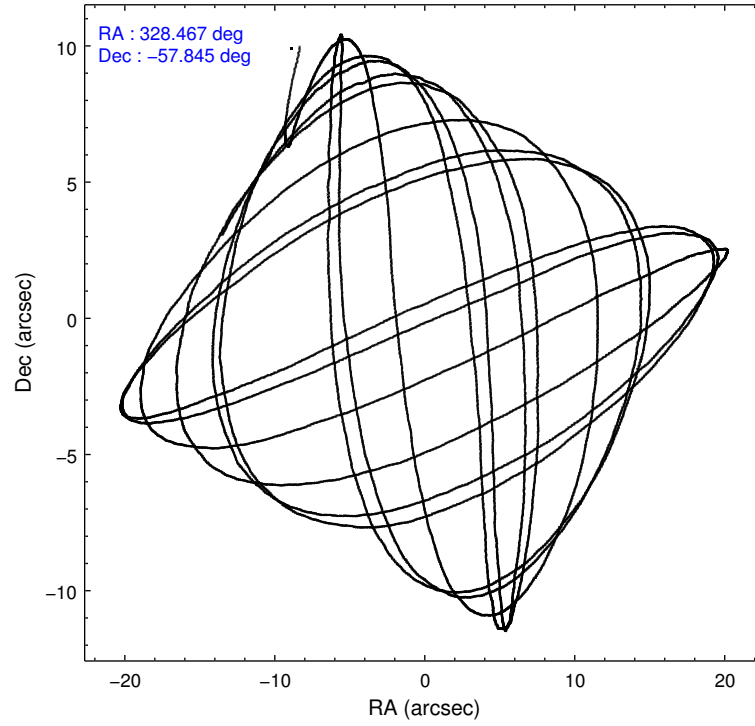
	ccd 0	ccd 1	ccd 2	ccd 3	ccd 6
level 1 events	59633	63961	70173	74225	62888
rejected events	52518	53509	61486	56691	56359
rejected %	88%	83%	87%	76%	89%

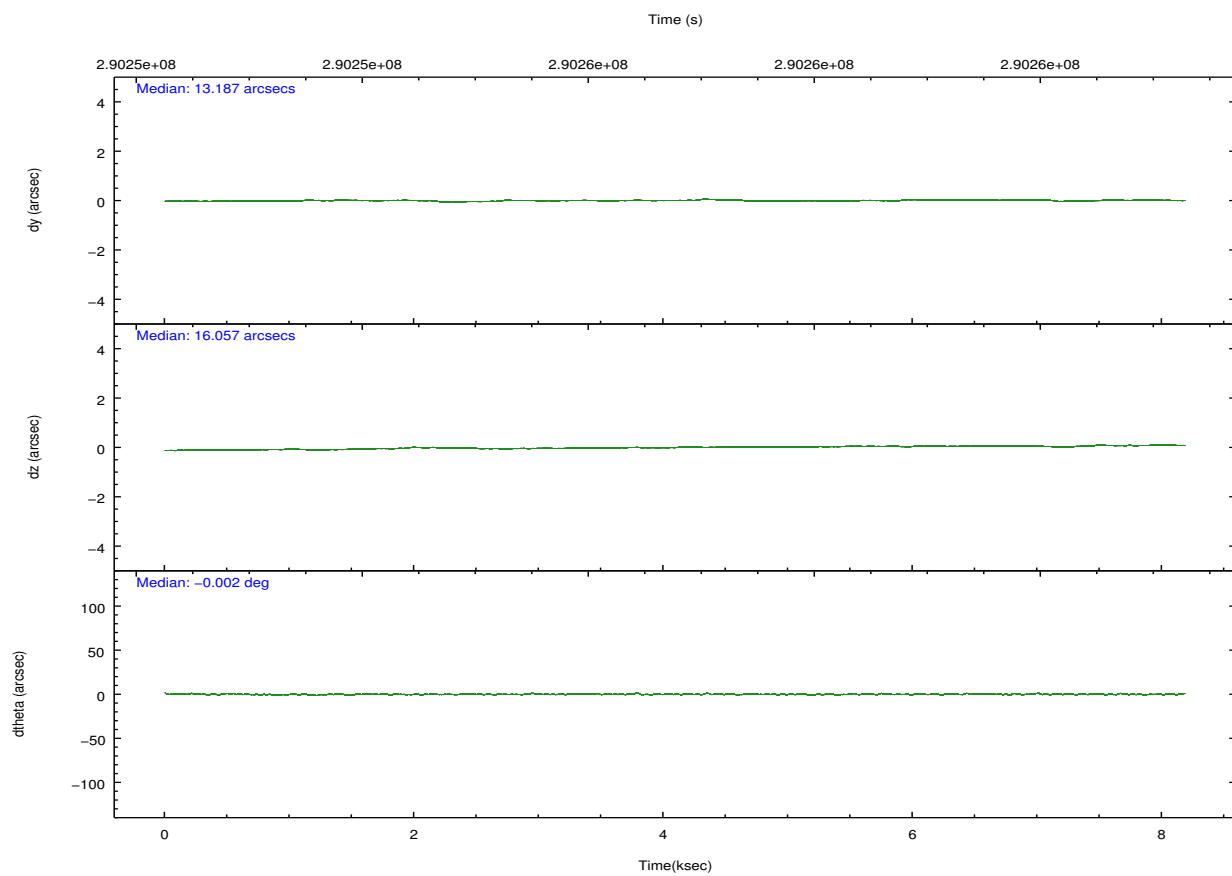
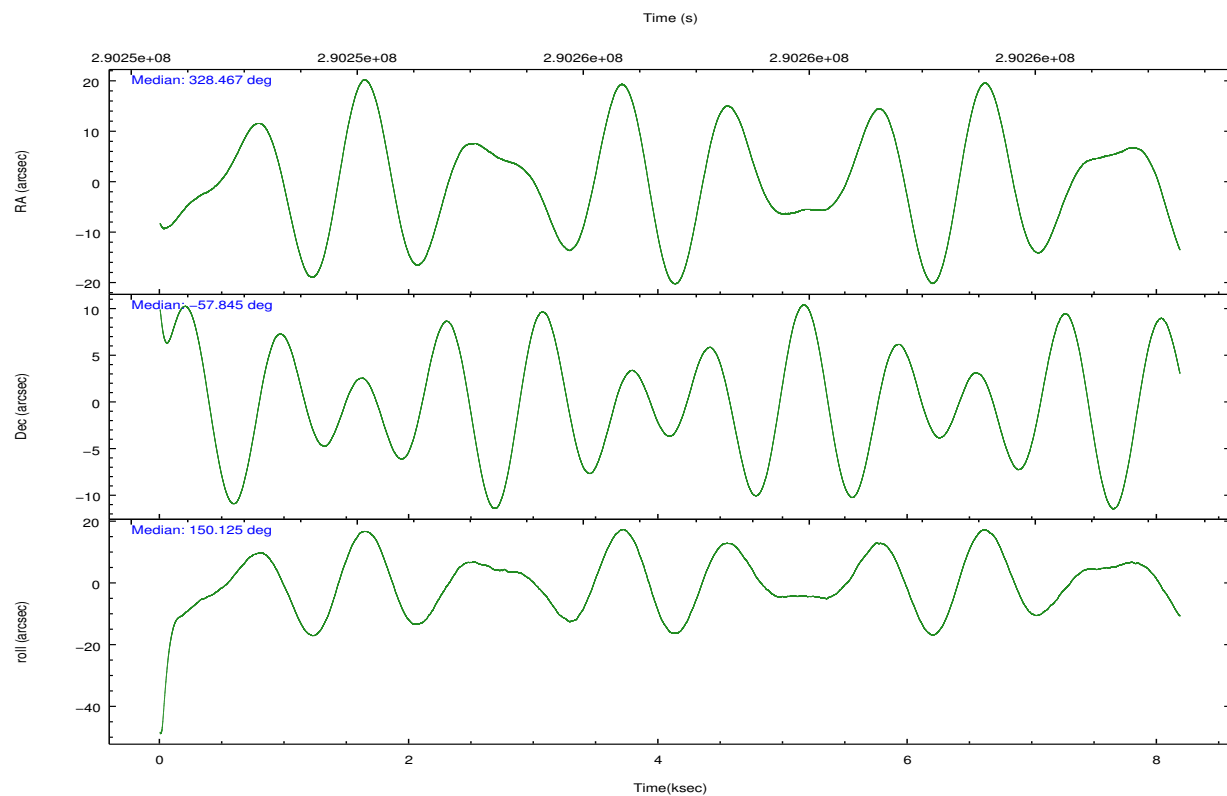
	ccd 0	ccd 1	ccd 2	ccd 3	ccd 6
grade 0 events	2946	5470	4234	11746	2383
	4%	8%	6%	15%	3%
grade 1 events	35	42	50	100	30
	0%	0%	0%	0%	0%
grade 2 events	1625	1892	1759	2480	1389
	2%	2%	2%	3%	2%
grade 3 events	696	826	746	1001	707
	1%	1%	1%	1%	1%
grade 4 events	727	880	733	983	722
	1%	1%	1%	1%	1%
grade 5 events	2176	2503	2154	2625	2543
	3%	3%	3%	3%	4%
grade 6 events	1172	1463	1270	1443	1370
	1%	2%	1%	1%	2%
grade 7 events	50256	50885	59227	53847	53744
	84%	79%	84%	72%	85%

2.2 Compared Parameters

Parameter	Planned	Actual	Parameter	Planned	Actual
Instrument	ACIS	ACIS	Obspar format version number	7	7
Detector	ACIS-01236	ACIS-01236	Obspar file type	PREDICTED	ACTUAL
Grating	NONE	NONE	Obspar update status	NONE	UPDATED
Data mode	VFAINT	VFAINT	Number of optional ACIS chips dropped	0	0
Observation mode	POINTING	POINTING	On-chip summing requested	N	N
[deg] Pointing RA	328.518208	328.4665332249463	Subarray requested	NONE	NONE
[deg] Pointing Dec	-57.844992	-57.84507746153682	Alternating exposures requested	N	N
[deg] Pointing Roll	149.955636	150.1205171168242	[s] Primary exposure time	0.000000	3.1
[mm] SIM focus pos	-0.782348	-0.7809083437167272			
[mm] SIM defocus	0	0.001439871863259334			
[mm] SIM translation stage pos	-228.592463	-228.5990329025337			
[mm] SIM translation stage offset	-5	-4.993420100396037			
[s] Observation start time (MET)	290252861.184000	290251842.20198			
Observation start date	2007-03-14T09:46:36	2007-03-14T09:30:42			
[s] Observation end time (MET)	290260861.184000	290261883.61496			
Observation end date	2007-03-14T11:59:56	2007-03-14T12:18:03			
Read mode	TIMED	TIMED			

2.3 Aspect



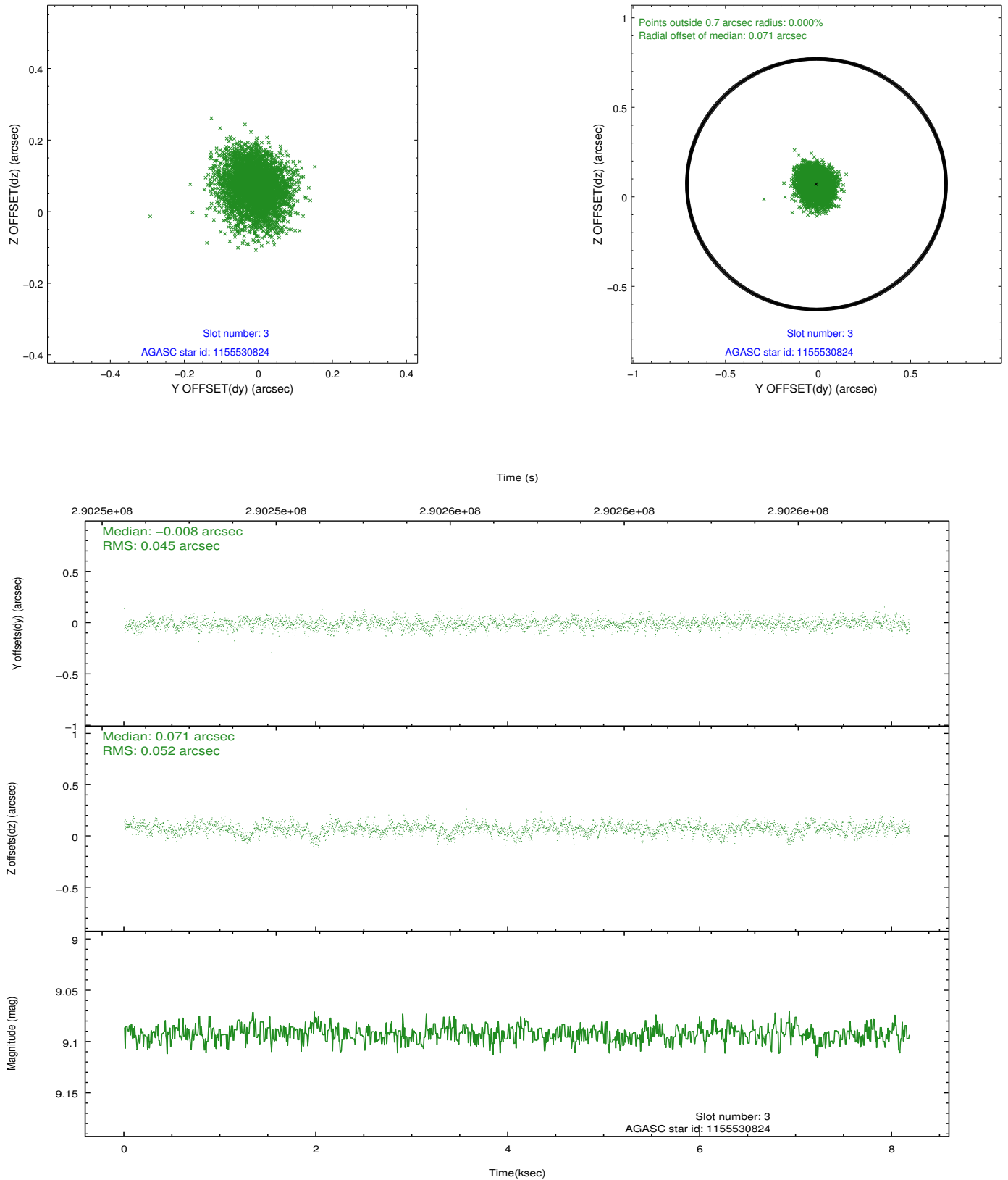


Slot Statistics

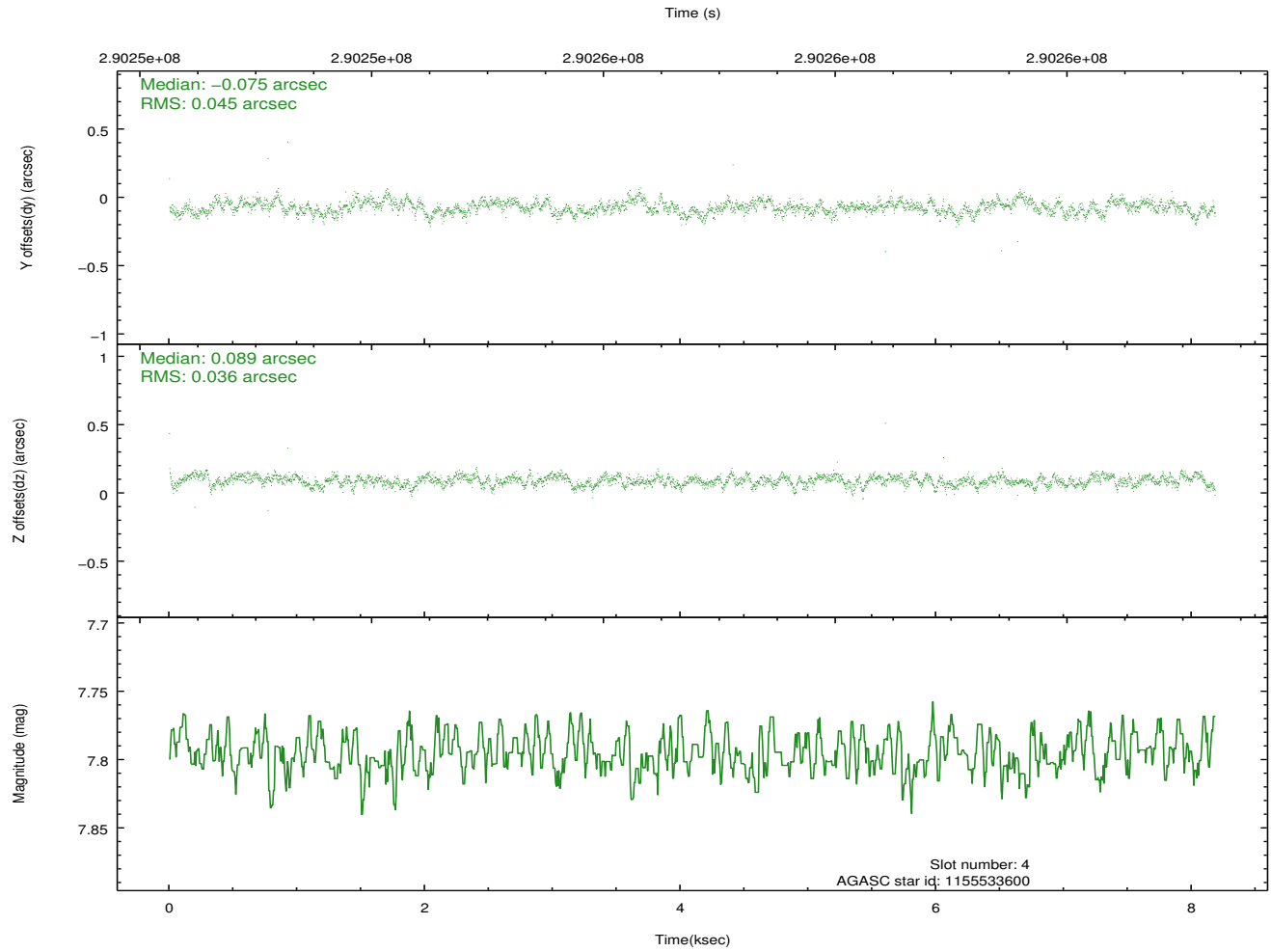
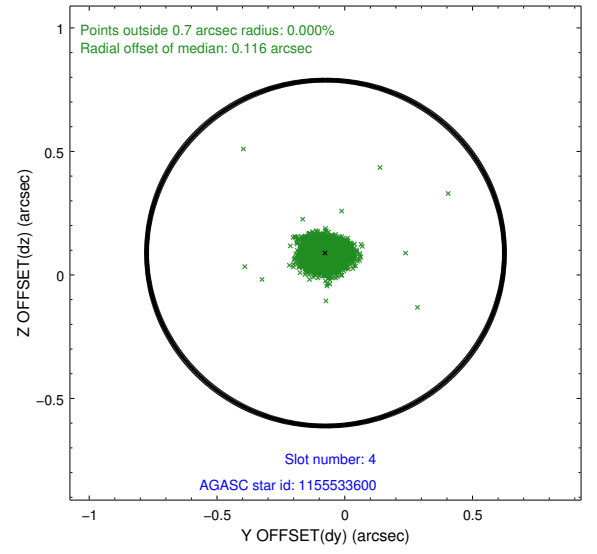
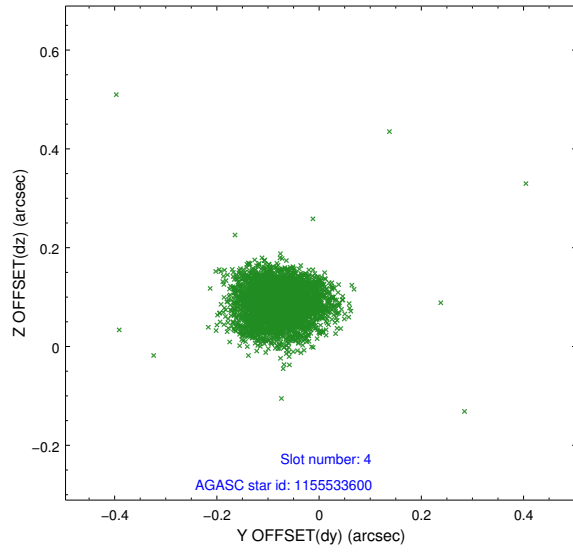
slot	status	id	mag	n_pts	med_dy	med_dz	dr1	dr2	ra	dec	mean_y	mean_z
0	FID	ACIS-I-1	7.23	1995	0.080	-0.042	0.007	0.011	0.000000	0.000000	926.32	-942.19
1	FID	ACIS-I-5	7.21	1996	-0.248	0.072	0.006	0.011	0.000000	0.000000	-1821.75	955.01
2	FID	ACIS-I-6	7.24	1996	0.077	0.041	0.007	0.011	0.000000	0.000000	391.10	1600.27
3	GUIDE	1155530824	9.09	3991	-0.008	0.071	0.074	0.121	329.447662	-58.035174	-1881.60	-282.80
4	GUIDE	1155533600	7.80	3993	-0.075	0.089	0.059	0.096	328.200624	-57.334672	1453.42	-1279.52
5	GUIDE	1155539208	6.53	3993	-0.004	0.074	0.082	0.124	329.058563	-57.899590	-994.40	-343.45
6	GUIDE	1156060160	9.60	3988	0.085	-0.231	0.107	0.170	328.659571	-58.566976	-1530.63	2117.77
7	OMITTED		0.00	0	0.000	0.000	0.000	0.000	0.000000	0.000000	0.00	0.00

2.4 Star Slots

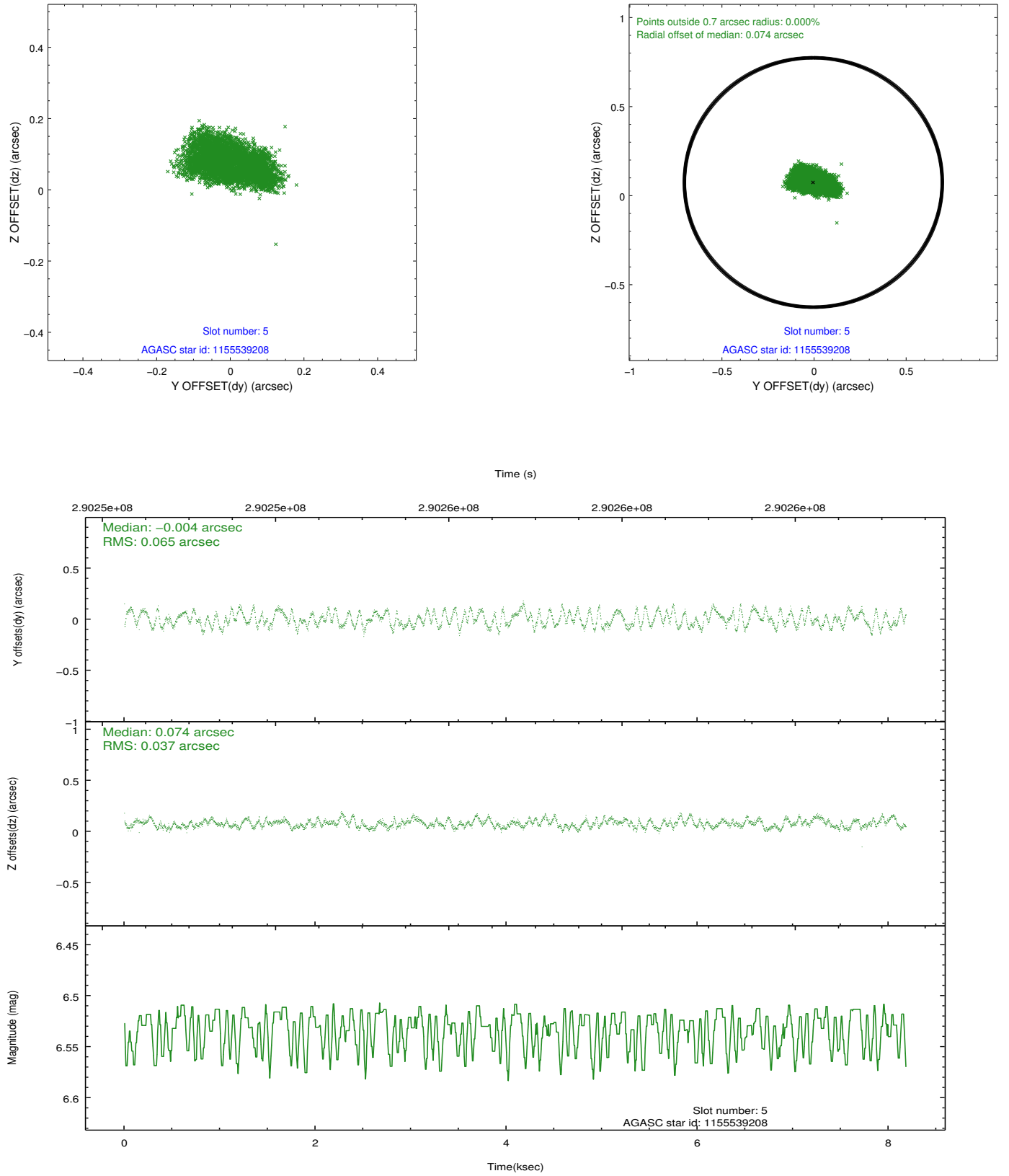
2.4.1 Slot 3



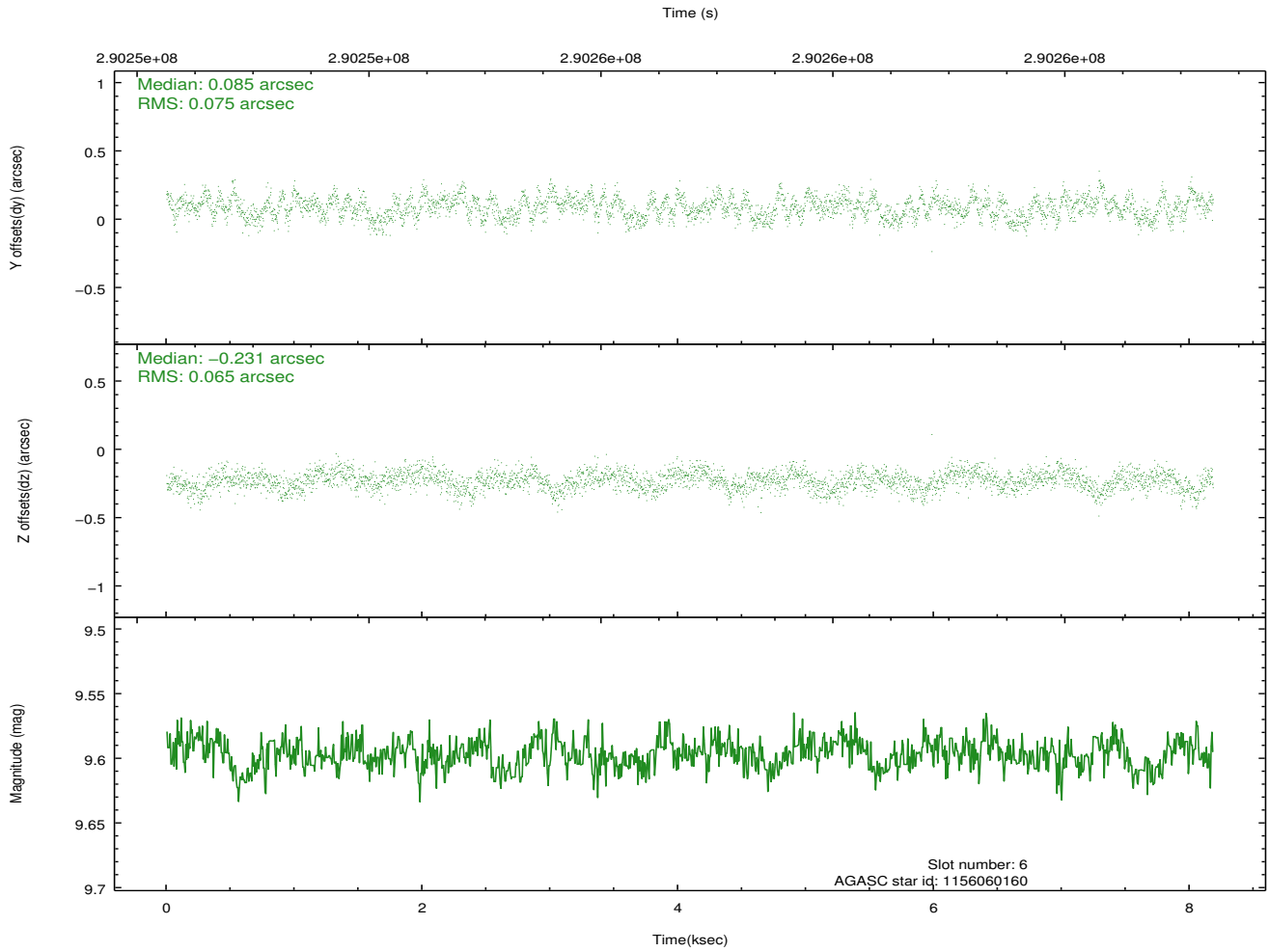
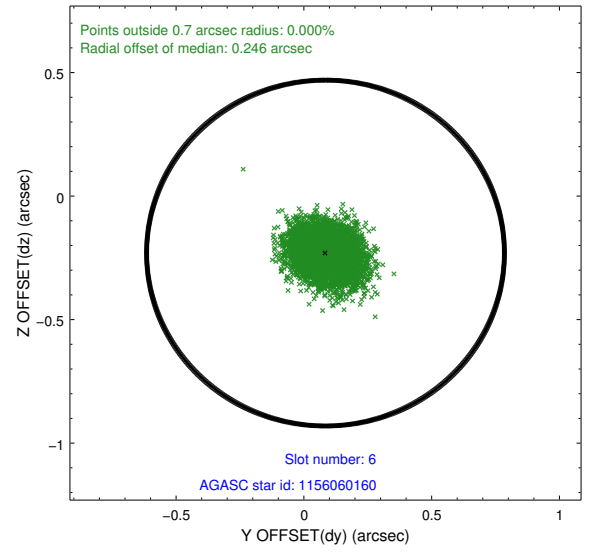
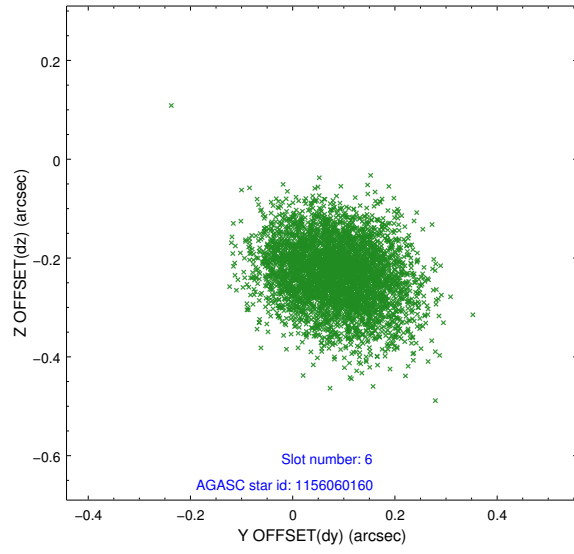
2.4.2 Slot 4



2.4.3 Slot 5

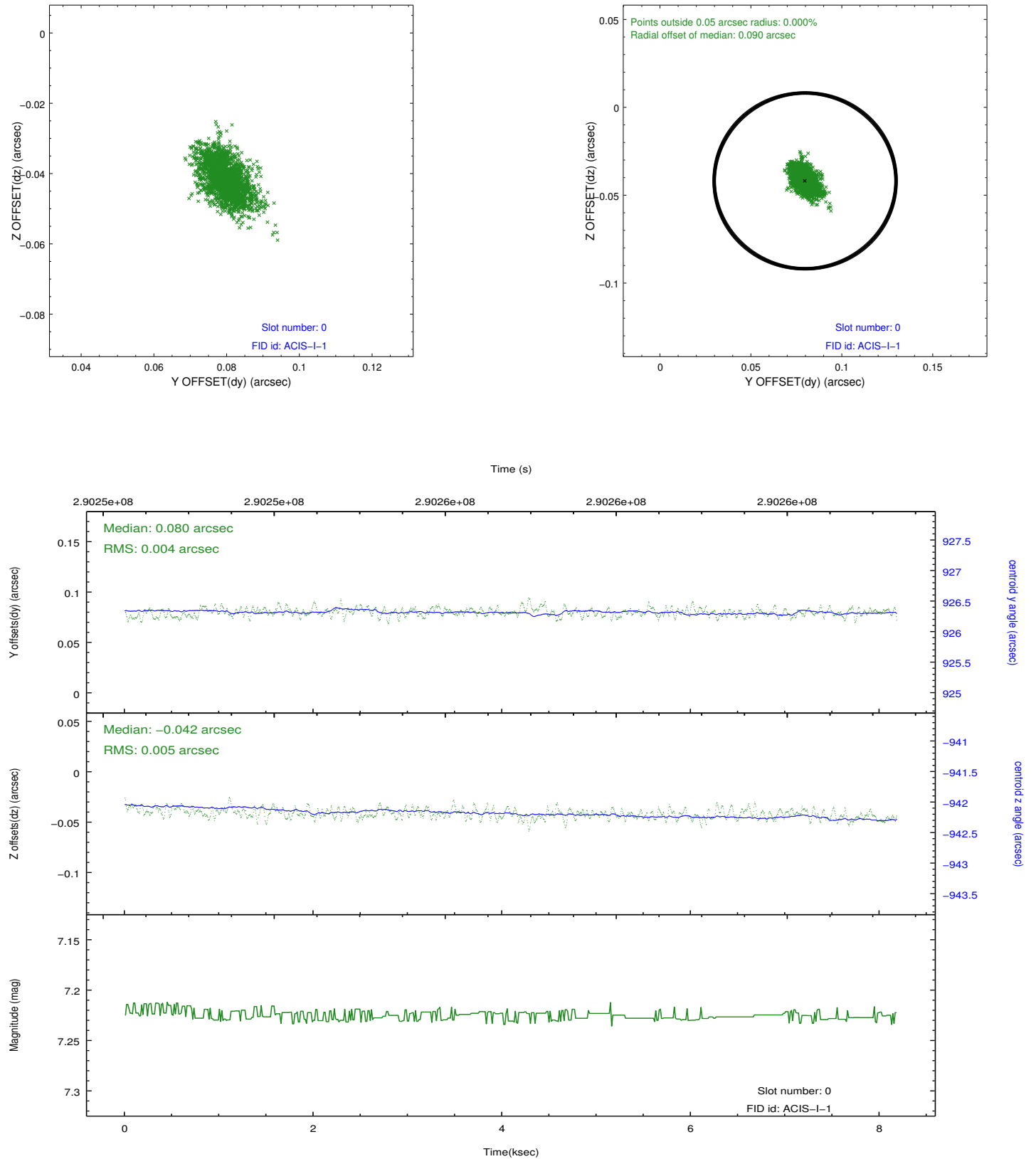


2.4.4 Slot 6

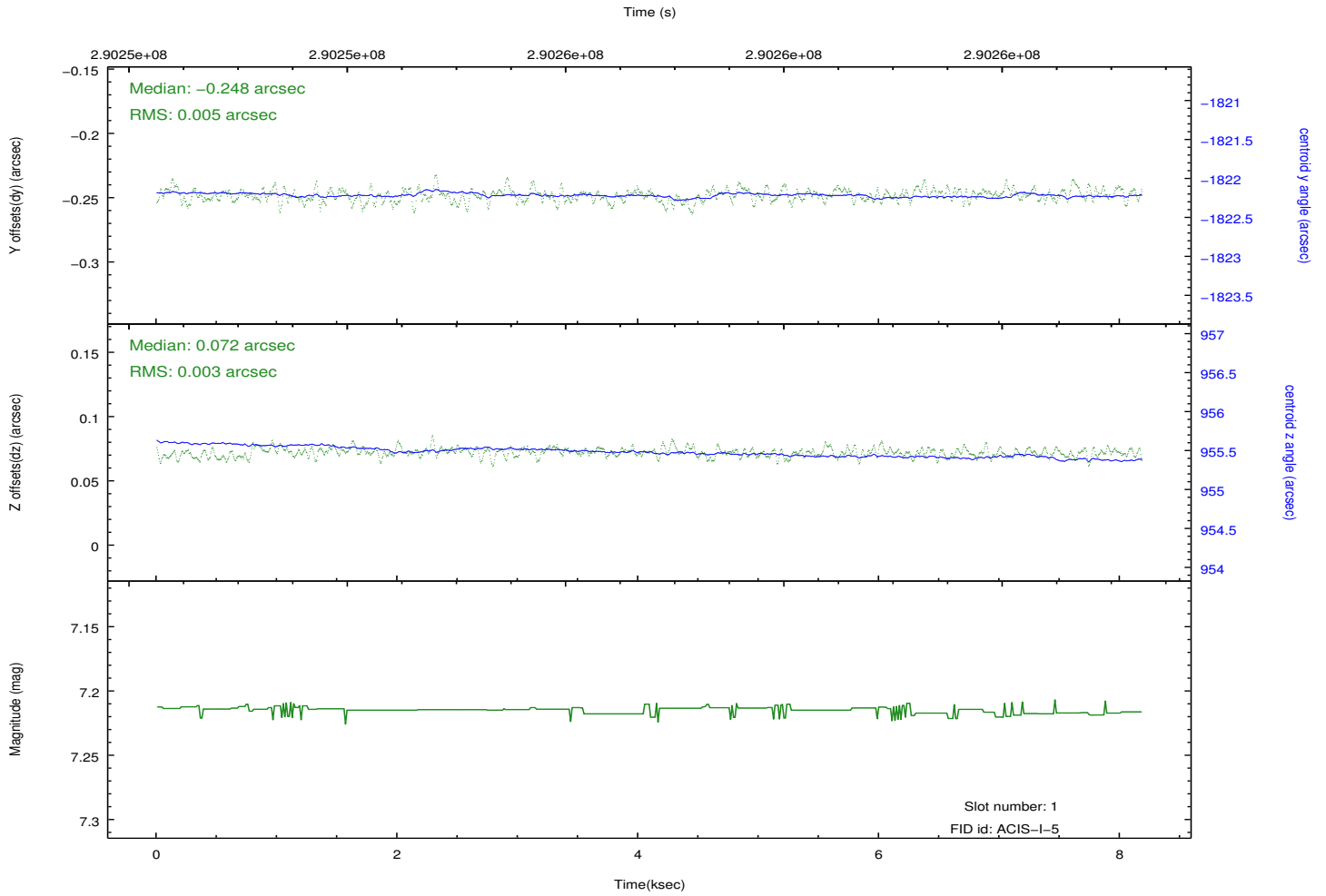
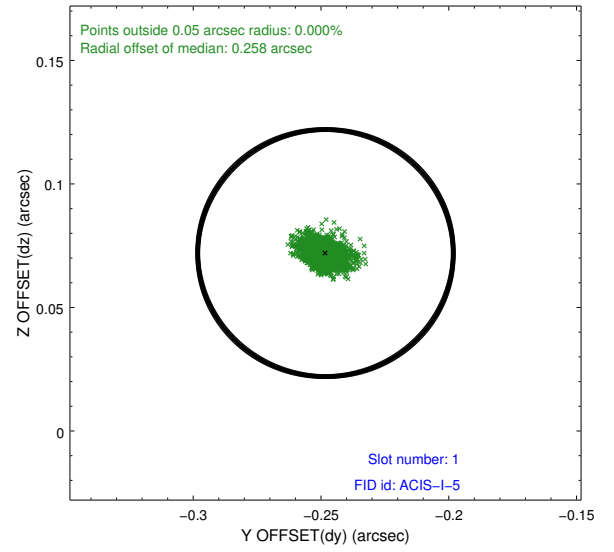
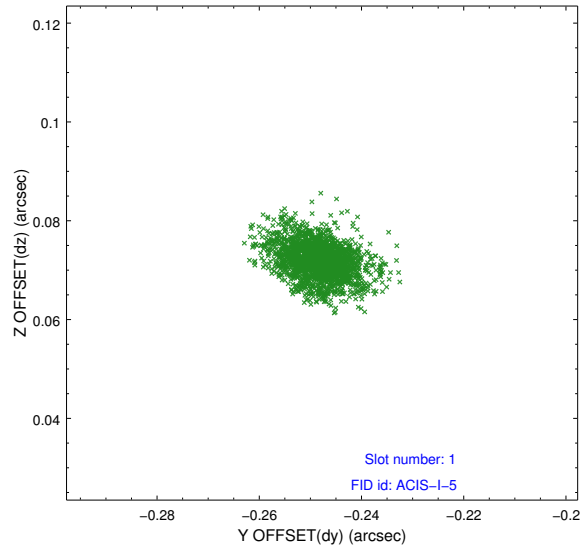


2.5 FID Slots

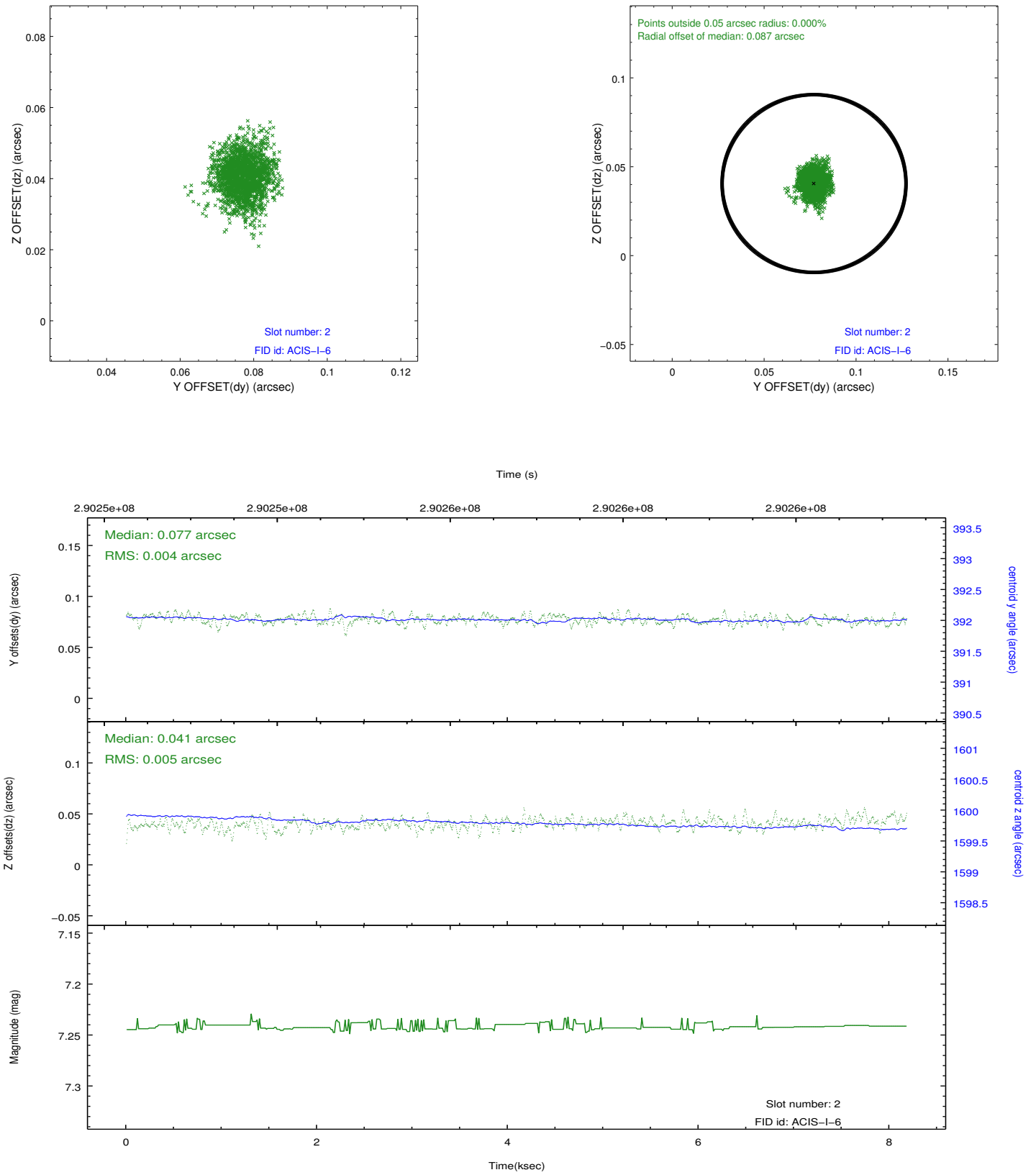
2.5.1 Slot 0



2.5.2 Slot 1



2.5.3 Slot 2



A Summary

A.1 Status

V&V Scientist	Jen Lauer
V&V Date (YYYY-MM-DD)	2012.04.23
V&V Edition	1
V&V Disposition and Status	OK
V&V Charge Time	8.17465909

A.2 Comments

The guide star in slot 7 was removed from the aspect solution due to poor data quality. The aspect solution is improved by the removal of this guide star from the solution.