

V&V Reference Report

L2 ASCDS Version : 8.4.4

Observation 8268 - L2 Version 3
Chandra X-Ray Center

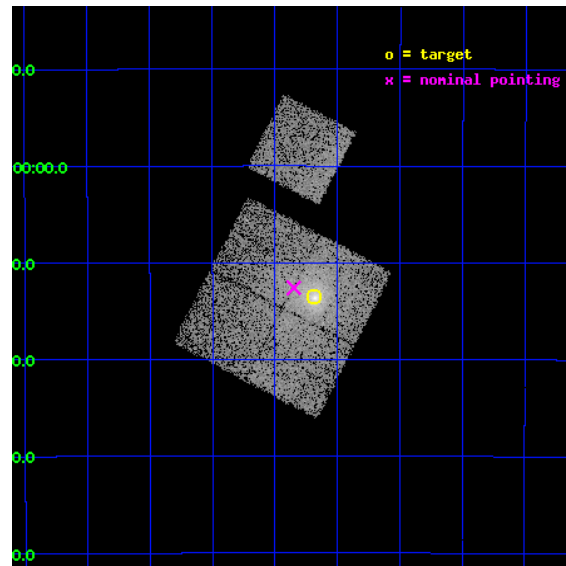
L2 Processing Date : Apr 21 2012

Contents

1	Front	2
2	OBI	3
2.1	OBI	3
2.1.1	Images	3
2.1.2	Bias	3
2.1.3	Parameters	4
2.1.4	Events	4
2.2	Compared Parameters	5
2.3	Aspect	6
2.4	Star Slots	9
2.4.1	Slot 3	9
2.4.2	Slot 4	10
2.4.3	Slot 5	11
2.4.4	Slot 6	12
2.4.5	Slot 7	13
2.5	FID Slots	14
2.5.1	Slot 0	14
2.5.2	Slot 1	15
2.5.3	Slot 2	16
A	Summary	17
A.1	Status	17
A.2	Comments	17

1 Front

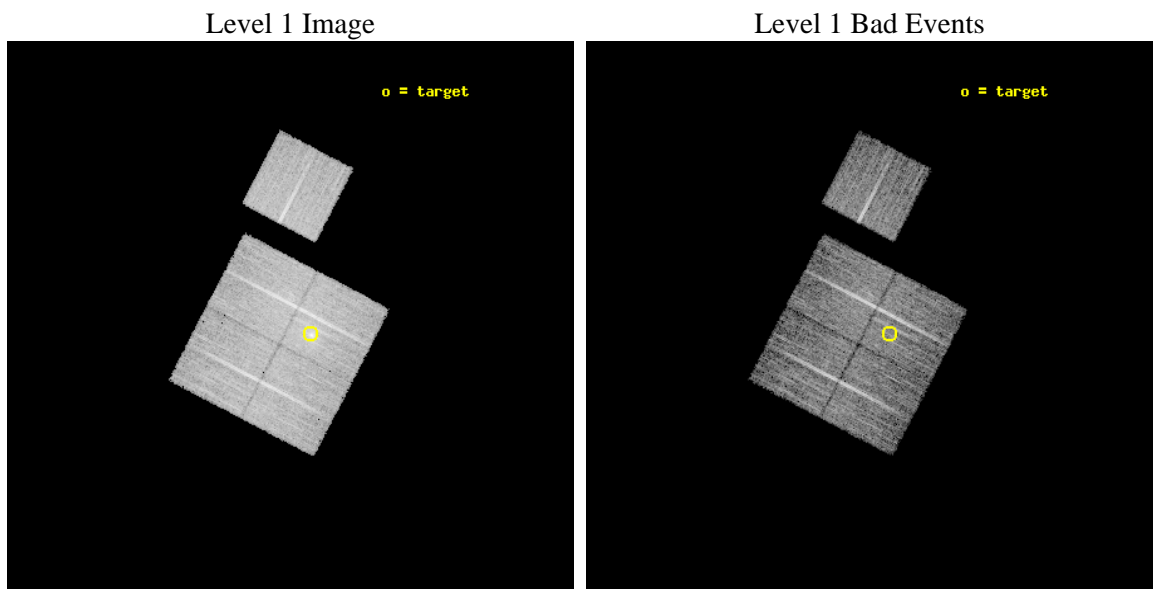
seq_num	800663	Sequence number
obs_id	8268	Observation id
title	Chandra observations of flux-limited sample of low-redshift galaxy clusters - A	Proposal title
observer	Dr. Stephen Murray	Principal investigator
object	A3528s	Source name
dtcycle	0	
cycle	P	events from which exps? Prim/Second/Both
ra_targ	193.672917	Observer's specified target RA [deg]
dec_targ	-29.225833	Observer's specified target Dec [deg]
ra_nom	193.71222525037	Nominal RA [deg]
dec_nom	-29.21000465731	Nominal Dec [deg]
roll_nom	27.575093767871	Nominal Roll [deg]
revision	3	Processing version of data
ontime	8184.0000629425	Sum of GTIs [s]
livetime	8077.070077147	Livetime [s]
ontime0	8184.0000629425	Sum of GTIs [s]
ontime1	8180.8590427637	Sum of GTIs [s]
ontime2	8184.0000629425	Sum of GTIs [s]
ontime3	8184.0000629425	Sum of GTIs [s]
ontime6	8184.0000629425	Sum of GTIs [s]
l2events	44158	Number of level 2 events



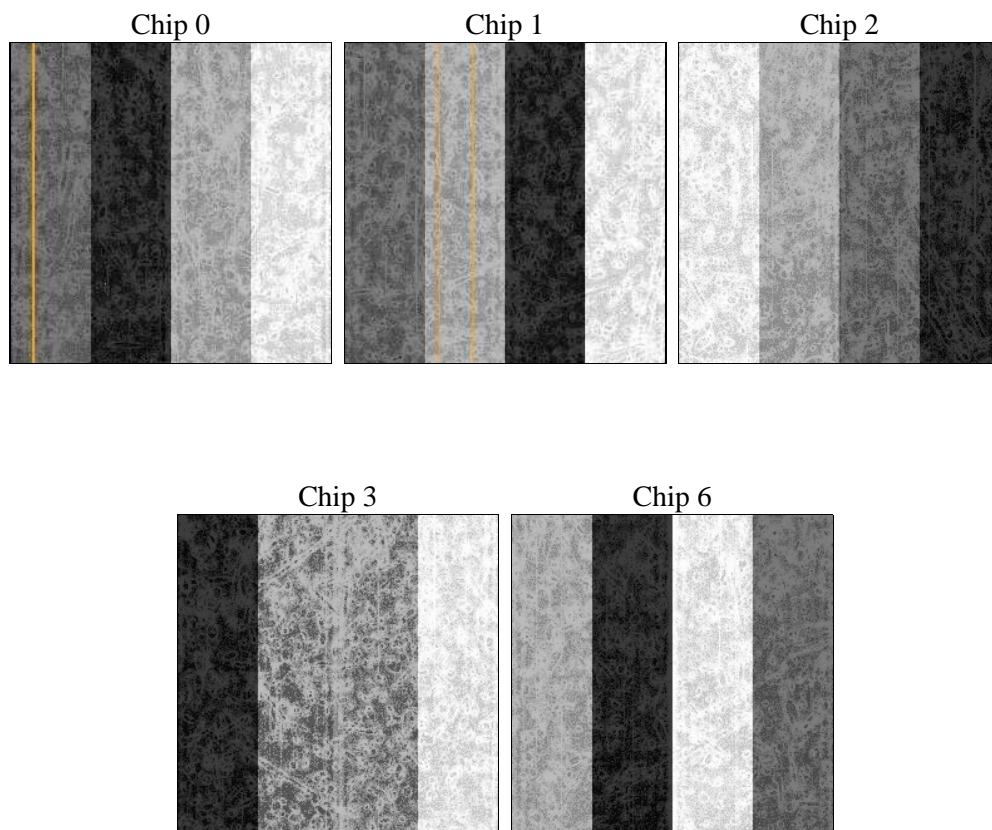
2 OBI

2.1 OBI

2.1.1 Images



2.1.2 Bias



2.1.3 Parameters

obi_num	0	Obi number	sched_exp_time	8000.000000	[s] Scheduled observation exposure time
ascdsver	8.4.4	Processing system revision	ontime	8184.0000629425	Sum of GTIs [s]
caldsver	4.4.9	 	ontime0	8184.0000629425	Sum of GTIs [s]
date	2012-04-21T16:30:09	Date and time of file creation	ontime1	8180.8590427637	Sum of GTIs [s]
revision	3	Processing version of data	ontime2	8184.0000629425	Sum of GTIs [s]
			ontime3	8184.0000629425	Sum of GTIs [s]
			ontime6	8184.0000629425	Sum of GTIs [s]
			l1events	355243	Number of level 1 events

2.1.4 Events

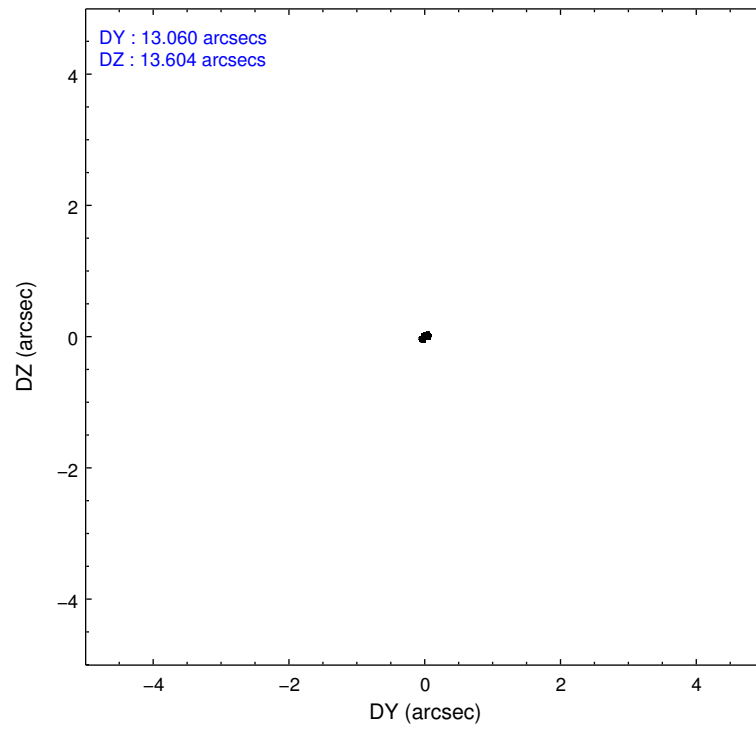
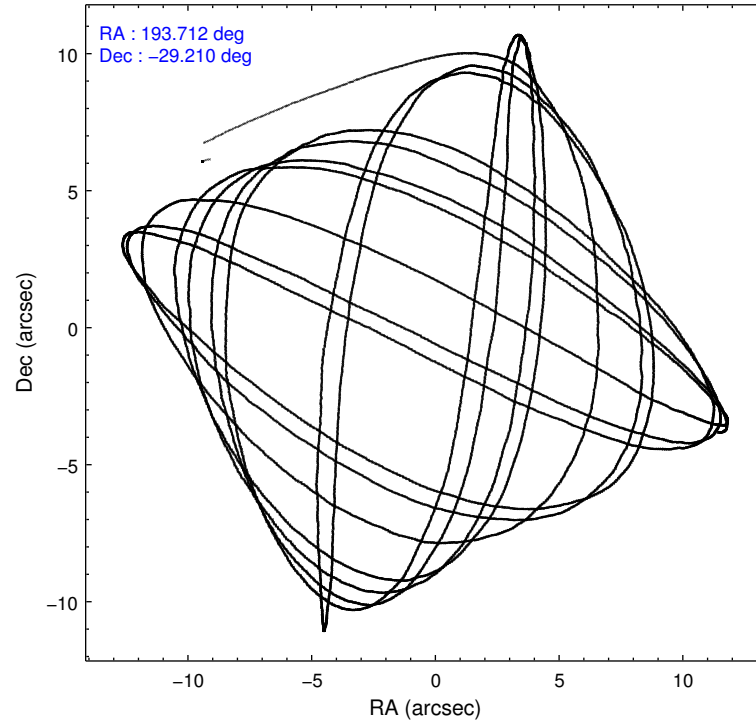
	ccd 0	ccd 1	ccd 2	ccd 3	ccd 6
level 1 events	64687	66704	74160	79595	70097
rejected events	57191	56993	65738	63208	61856
rejected %	88%	85%	88%	79%	88%

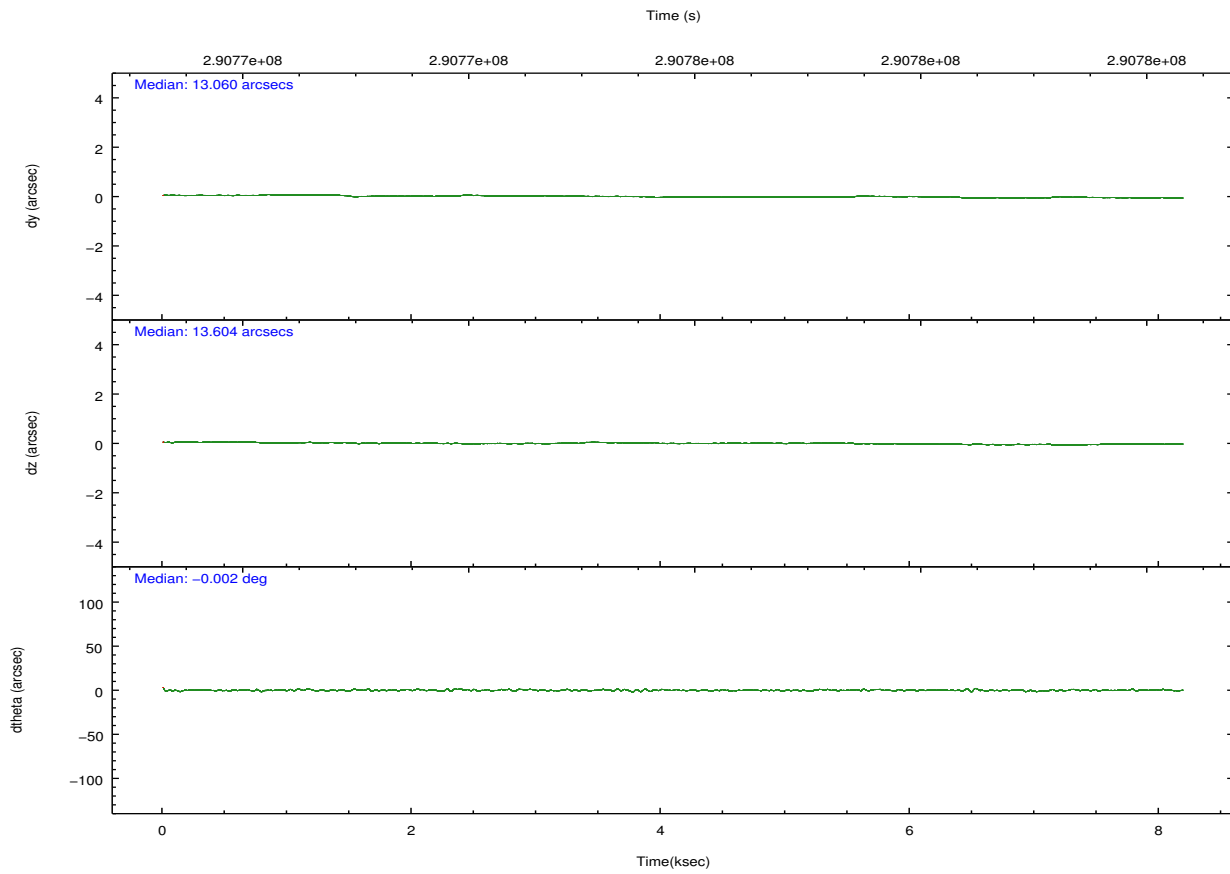
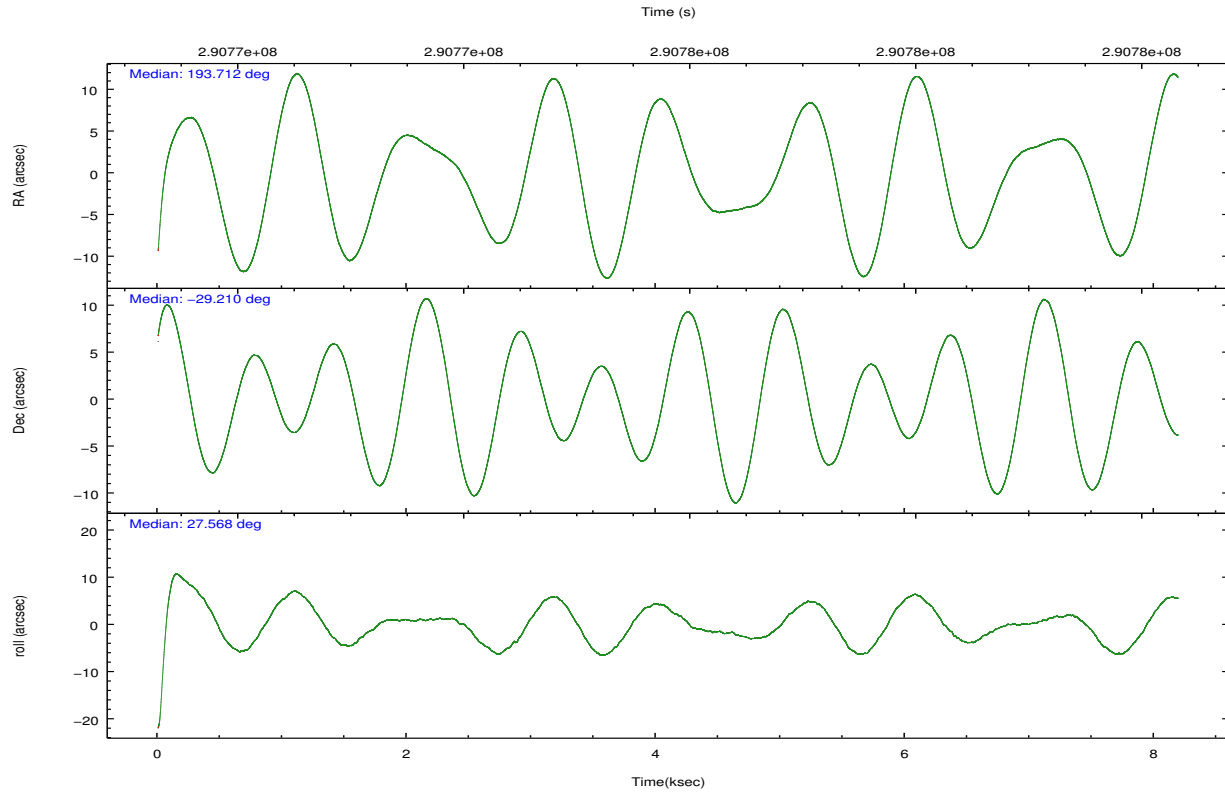
	ccd 0	ccd 1	ccd 2	ccd 3	ccd 6
grade 0 events	3261	4746	4184	10901	3699
	5%	7%	5%	13%	5%
grade 1 events	33	52	49	100	47
	0%	0%	0%	0%	0%
grade 2 events	1678	1993	1691	2384	1630
	2%	2%	2%	2%	2%
grade 3 events	787	940	744	1051	806
	1%	1%	1%	1%	1%
grade 4 events	766	855	787	998	807
	1%	1%	1%	1%	1%
grade 5 events	2368	2569	2185	2797	2724
	3%	3%	2%	3%	3%
grade 6 events	1313	1530	1319	1564	1597
	2%	2%	1%	1%	2%
grade 7 events	54481	54019	63201	59800	58787
	84%	80%	85%	75%	83%

2.2 Compared Parameters

Parameter	Planned	Actual	Parameter	Planned	Actual
Instrument	ACIS	ACIS	Obspar format version number	7	7
Detector	ACIS-01236	ACIS-01236	Obspar file type	PREDICTED	ACTUAL
Grating	NONE	NONE	Obspar update status	NONE	UPDATED
Data mode	VFAINT	VFAINT	Number of optional ACIS chips dropped	0	0
Observation mode	POINTING	POINTING	On-chip summing requested	N	N
[deg] Pointing RA	193.695411	193.7122252503736	Subarray requested	NONE	NONE
[deg] Pointing Dec	-29.233316	-29.21000465731002	Alternating exposures requested	N	N
[deg] Pointing Roll	27.358238	27.5750937678707	[s] Primary exposure time	0.000000	3.1
[mm] SIM focus pos	-0.782348	-0.7809083437167272			
[mm] SIM defocus	0	0.001439871863259334			
[mm] SIM translation stage pos	-228.592463	-228.5990329025337			
[mm] SIM translation stage offset	-5	-4.993420100396037			
[s] Observation start time (MET)	290771911.184000	290770735.66417			
Observation start date	2007-03-20T09:57:26	2007-03-20T09:38:55			
[s] Observation end time (MET)	290779911.184000	290781293.16468			
Observation end date	2007-03-20T12:10:46	2007-03-20T12:34:53			
Read mode	TIMED	TIMED			

2.3 Aspect



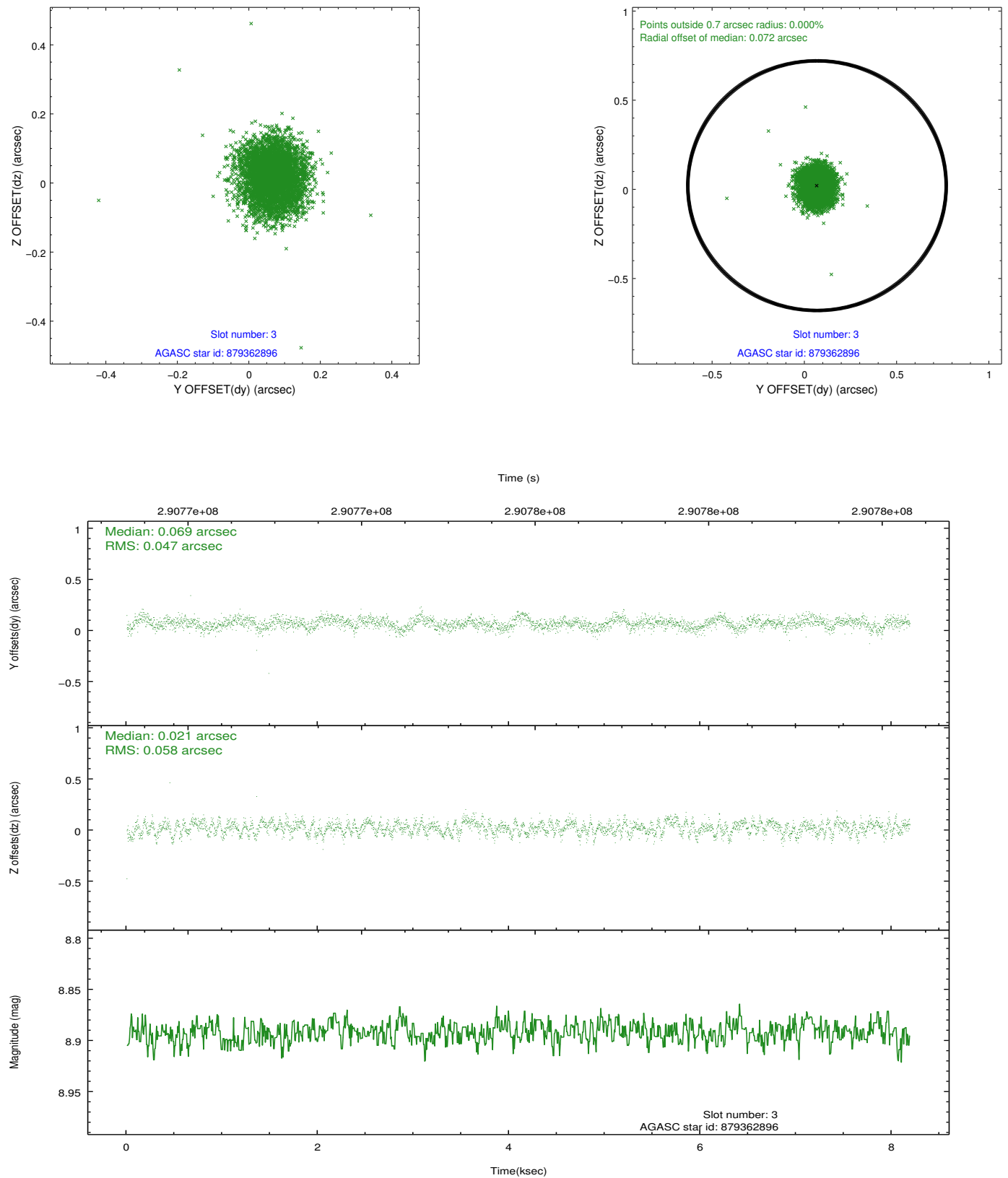


Slot Statistics

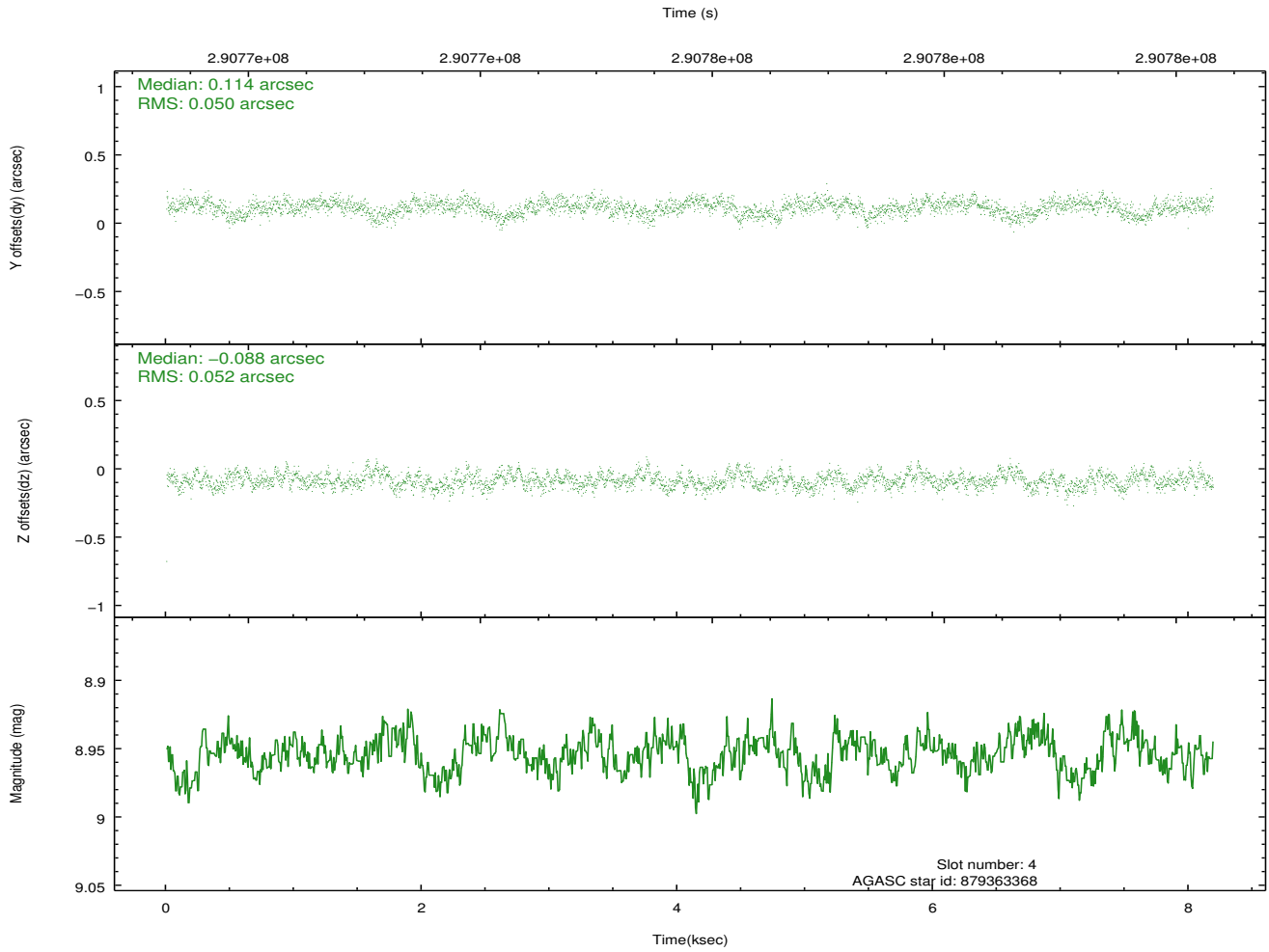
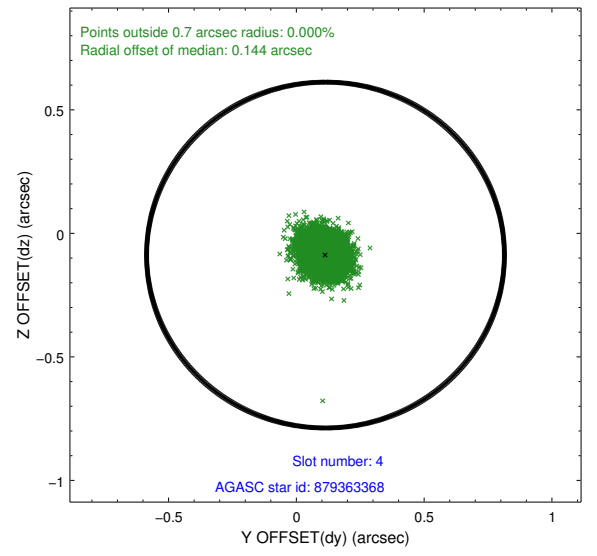
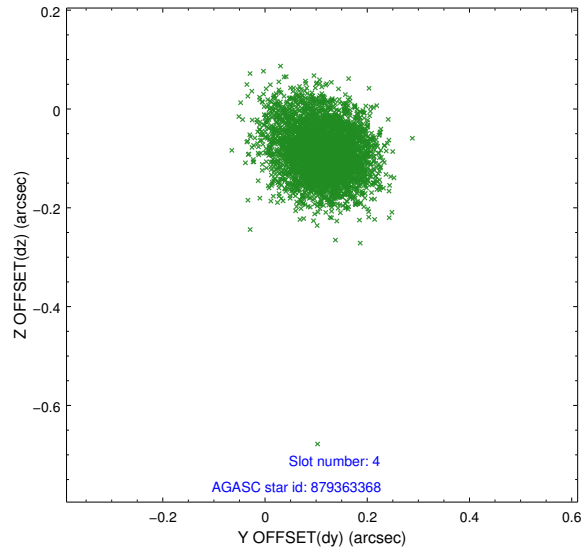
slot	status	id	mag	n_pts	med_dy	med_dz	dr1	dr2	ra	dec	mean_y	mean_z
0	FID	ACIS-I-2	7.16	1998	-0.107	-0.105	0.009	0.015	0.000000	0.000000	-768.18	-945.44
1	FID	ACIS-I-4	7.14	1997	0.210	0.091	0.006	0.012	0.000000	0.000000	2145.86	960.50
2	FID	ACIS-I-5	7.22	1998	-0.204	0.083	0.009	0.015	0.000000	0.000000	-1820.97	958.48
3	GUIDE	879362896	8.89	3994	0.069	0.021	0.078	0.125	193.646324	-29.438064	-475.15	-583.91
4	GUIDE	879363368	8.95	3993	0.114	-0.088	0.076	0.123	193.355088	-29.318430	-1090.29	217.12
5	GUIDE	879366032	8.94	3994	0.080	-0.089	0.075	0.122	192.835243	-28.983192	-1997.41	2035.81
6	GUIDE	879371832	9.12	3994	-0.145	0.077	0.122	0.176	194.118392	-29.345781	991.33	-970.91
7	GUIDE	879372920	9.66	3987	-0.110	0.087	0.102	0.166	194.444048	-29.448114	1726.23	-1772.05

2.4 Star Slots

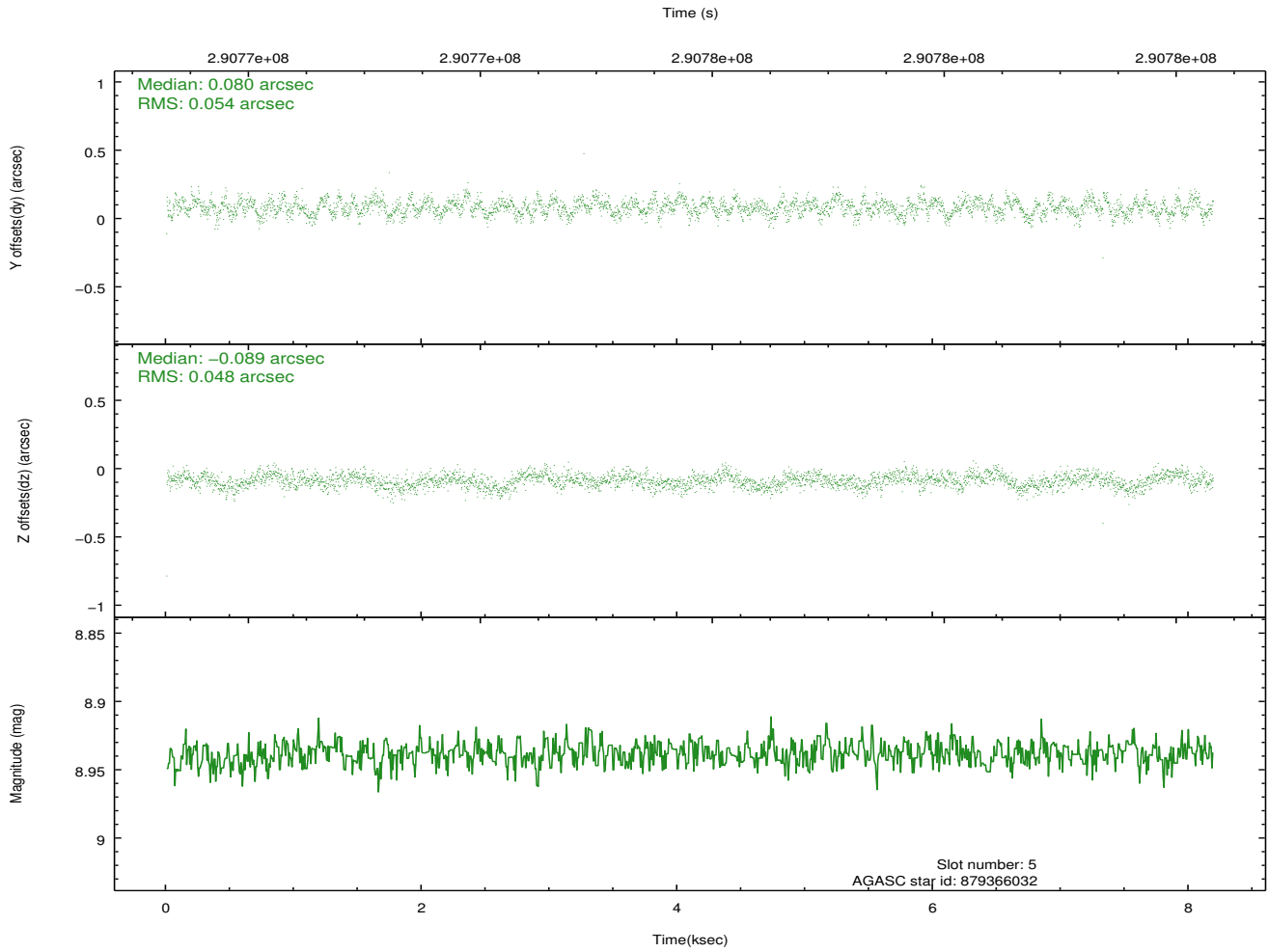
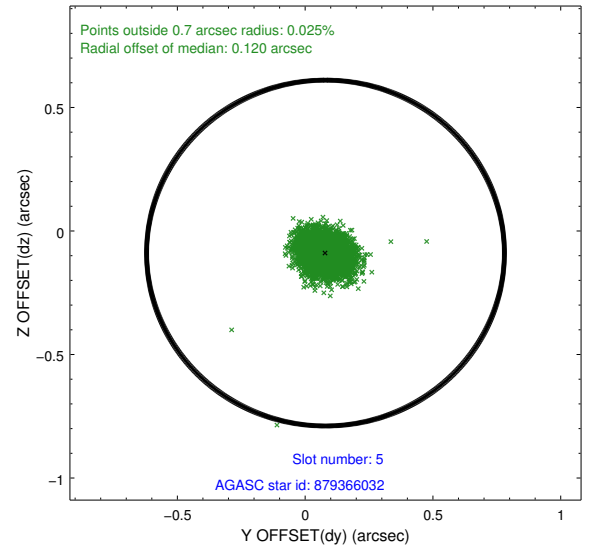
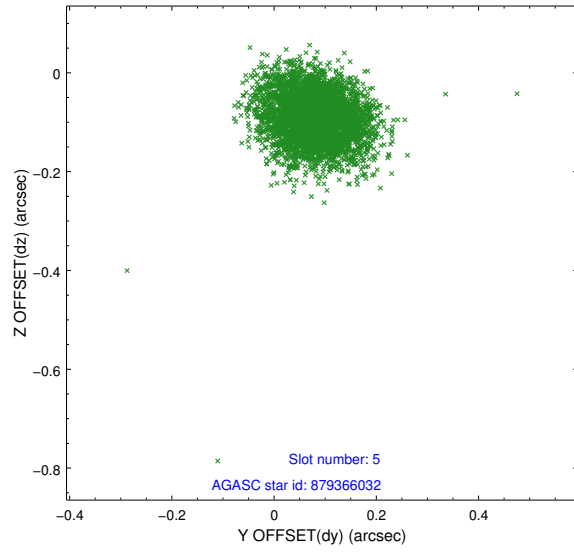
2.4.1 Slot 3



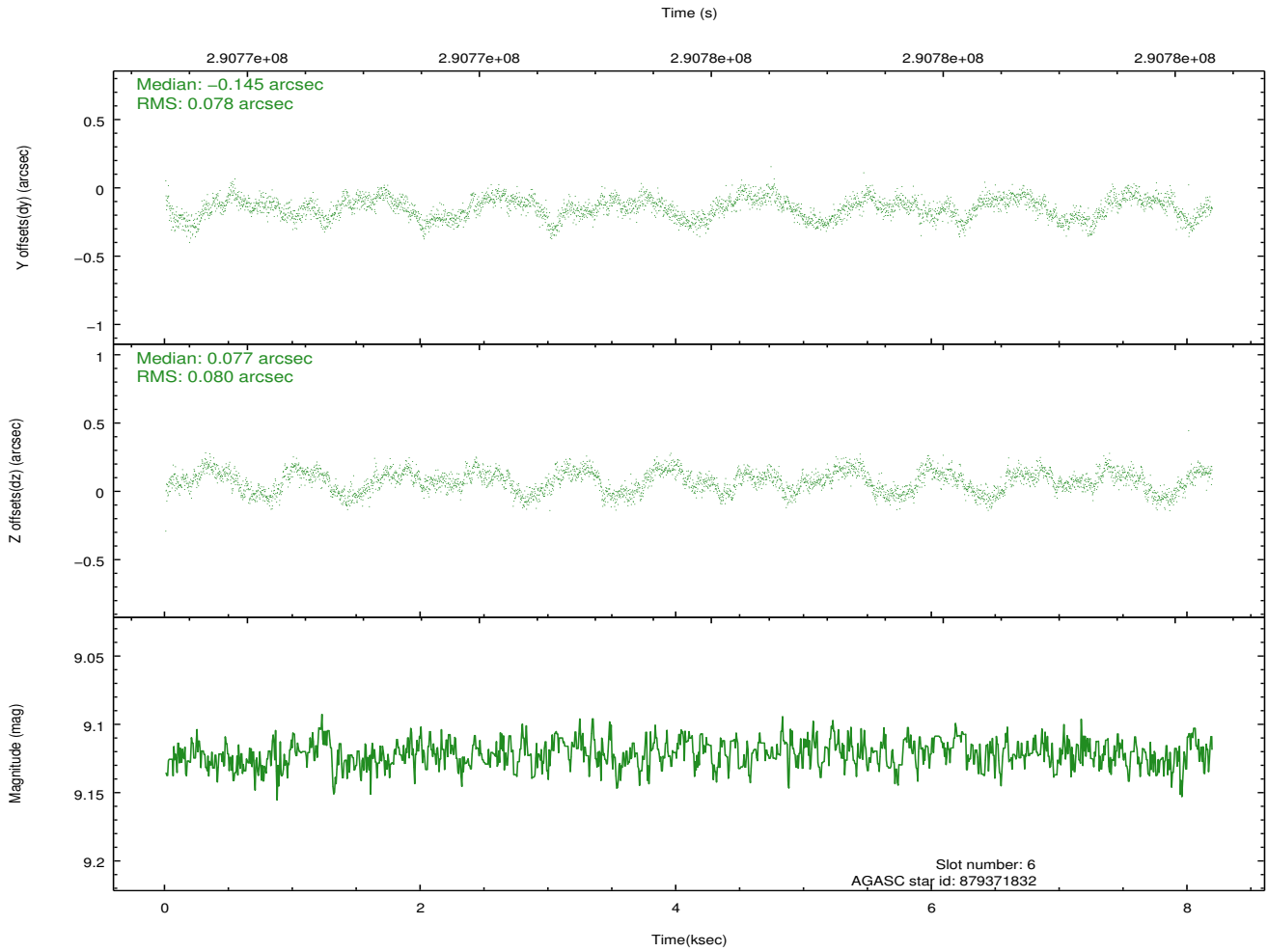
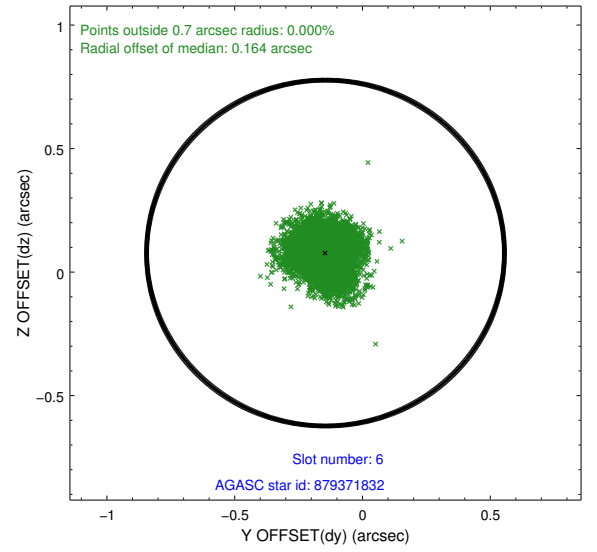
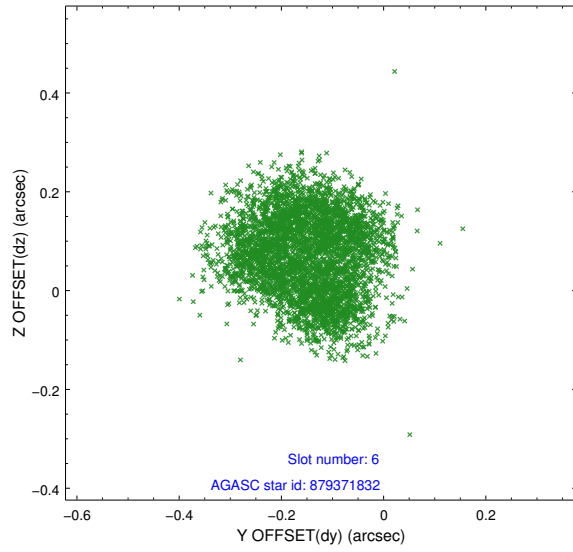
2.4.2 Slot 4



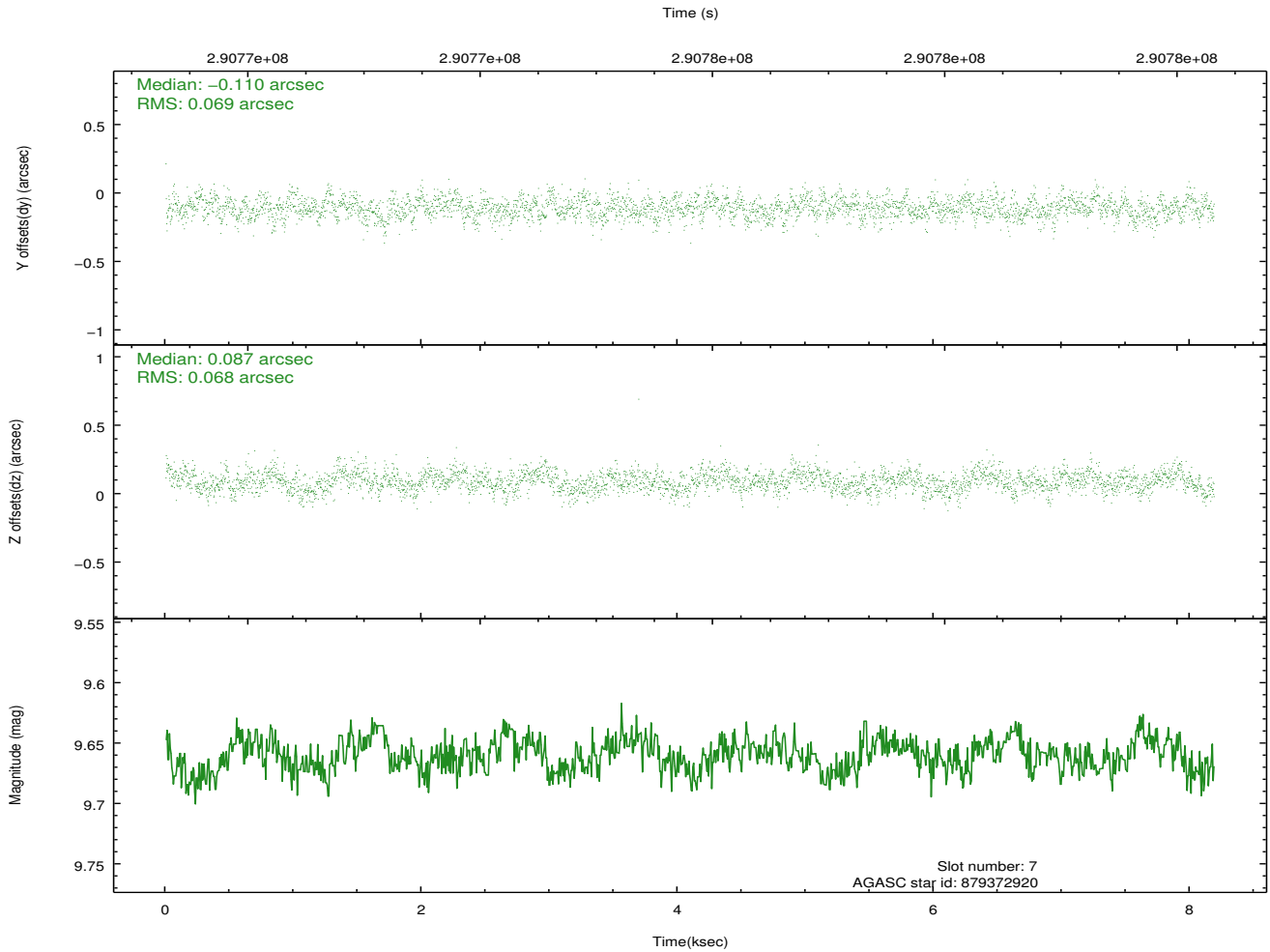
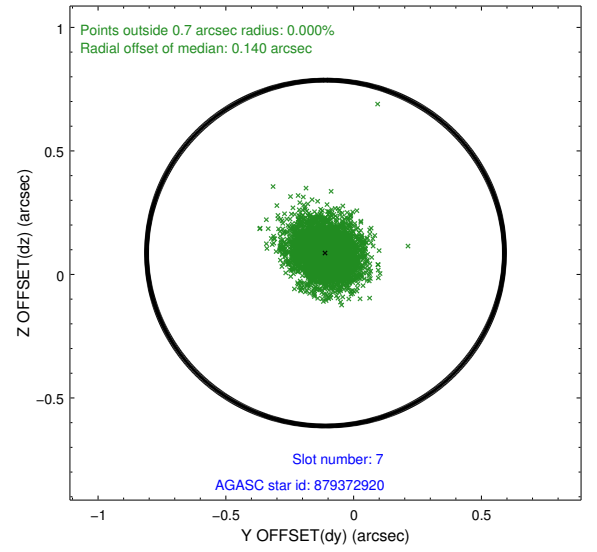
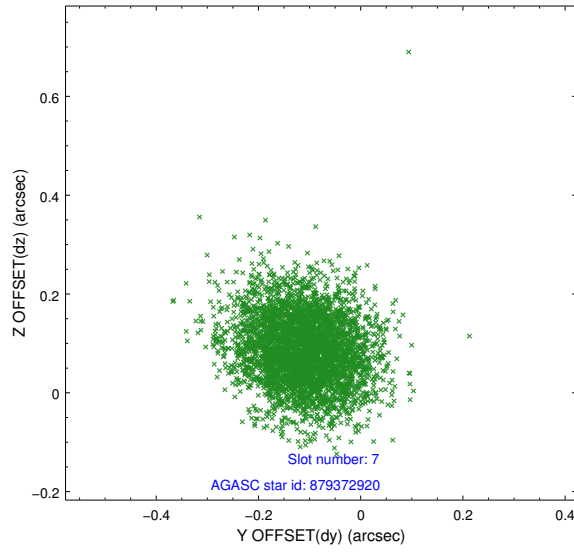
2.4.3 Slot 5



2.4.4 Slot 6

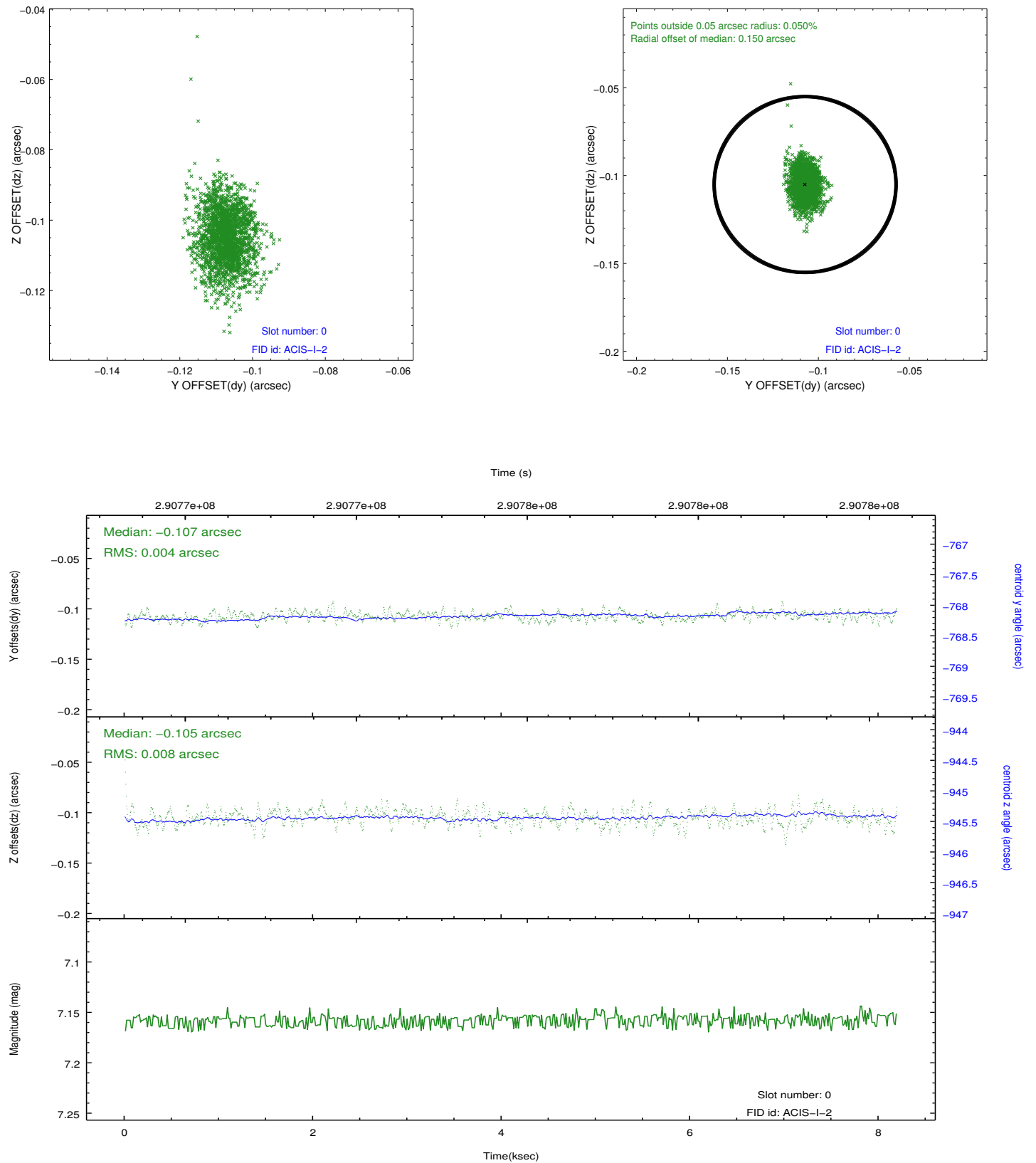


2.4.5 Slot 7

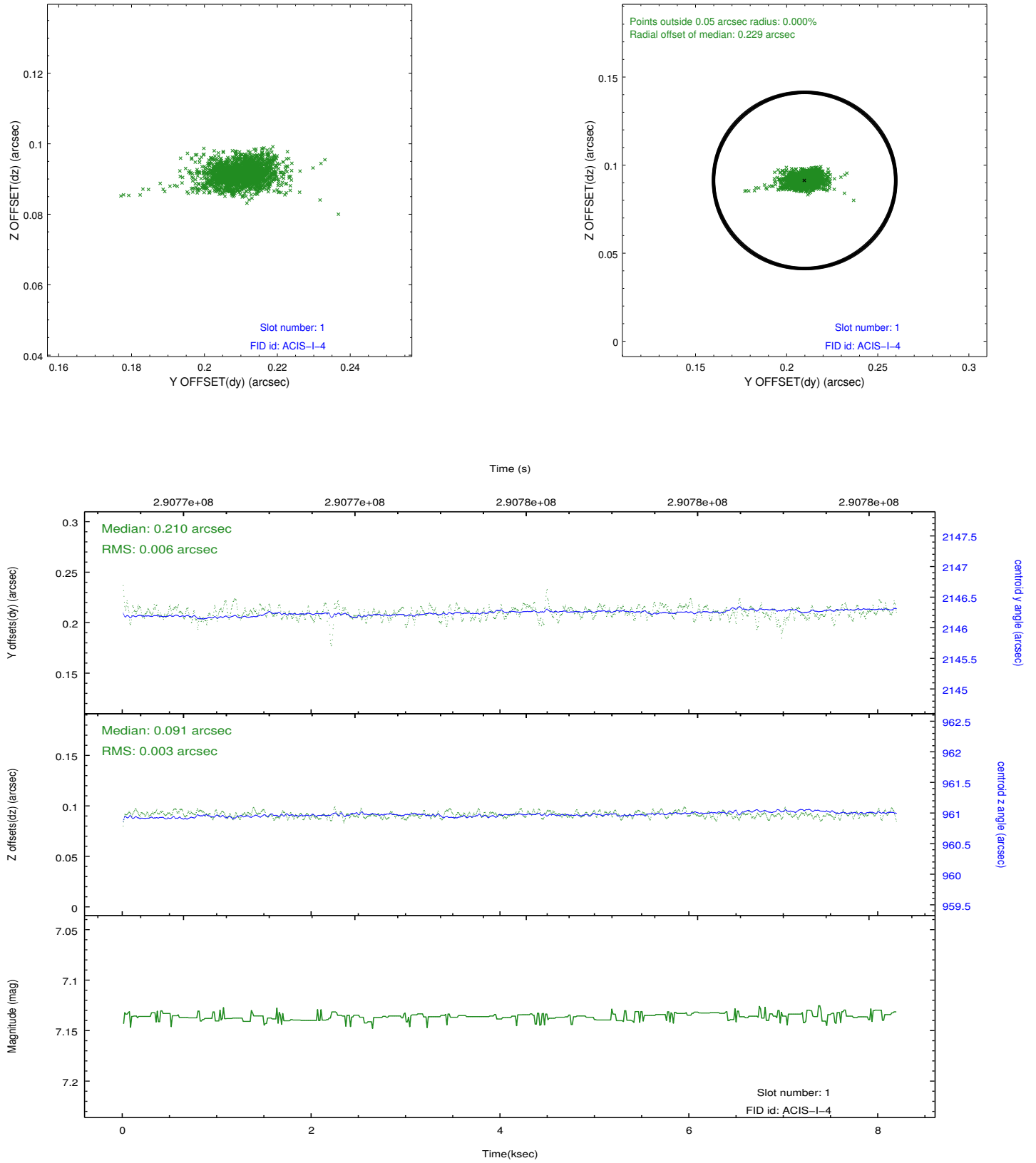


2.5 FID Slots

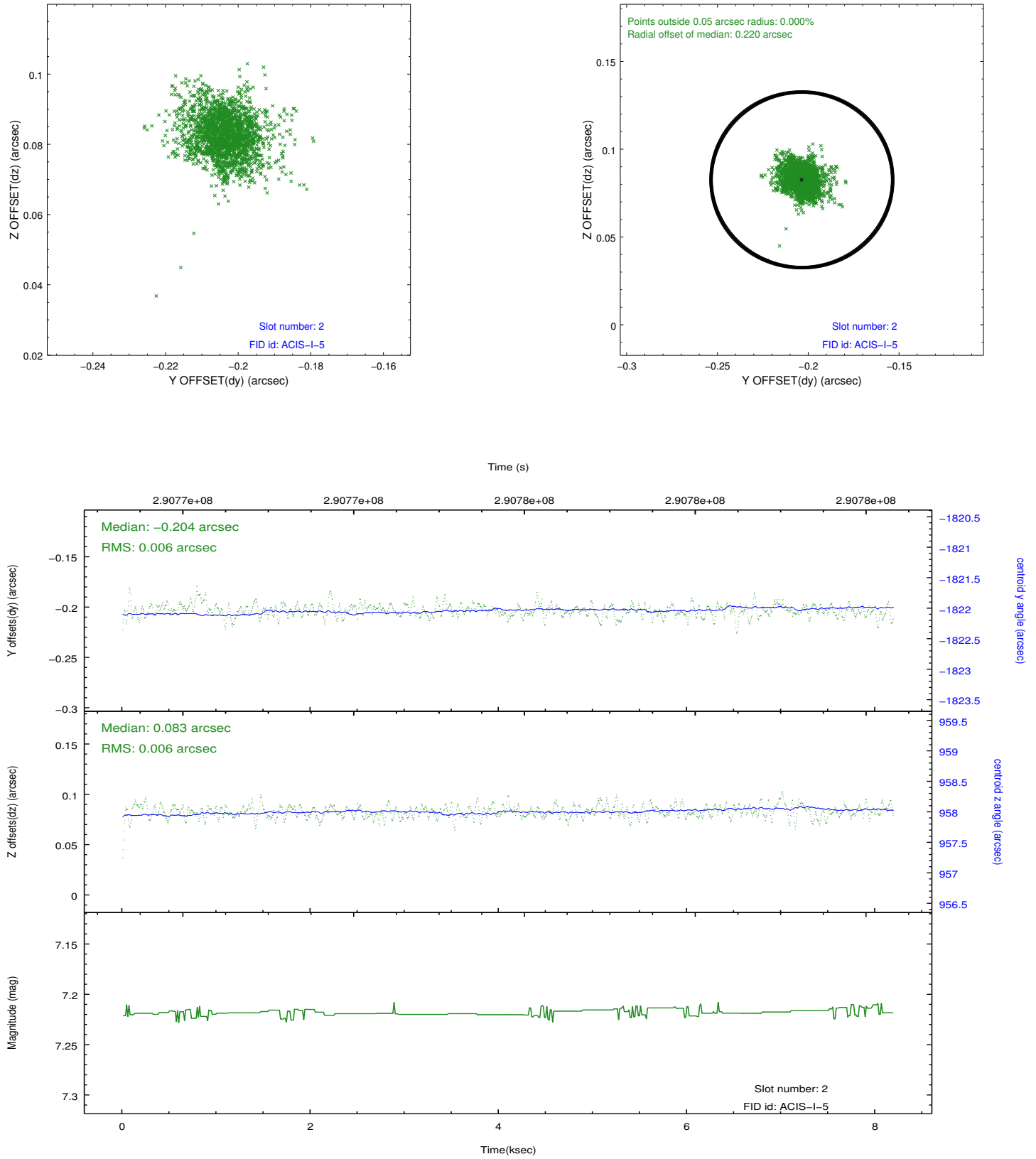
2.5.1 Slot 0



2.5.2 Slot 1



2.5.3 Slot 2



A Summary

A.1 Status

V&V Scientist	Beth Sundheim
V&V Date (YYYY-MM-DD)	2012.04.23
V&V Edition	1
V&V Disposition and Status	OK
V&V Charge Time	8.18400006

A.2 Comments