

V&V Reference Report

L2 ASCDS Version : 8.4.4

Observation 8266 - L2 Version 2
Chandra X-Ray Center

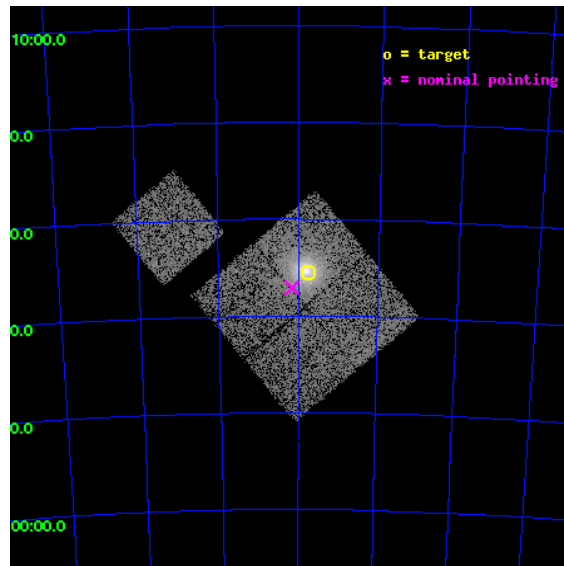
L2 Processing Date : Apr 26 2012

Contents

1	Front	2
2	OBI	3
2.1	OBI	3
2.1.1	Images	3
2.1.2	Bias	3
2.1.3	Parameters	4
2.1.4	Events	4
2.2	Compared Parameters	5
2.3	Aspect	6
2.4	Star Slots	9
2.4.1	Slot 3	9
2.4.2	Slot 4	10
2.4.3	Slot 5	11
2.4.4	Slot 6	12
2.4.5	Slot 7	13
2.5	FID Slots	14
2.5.1	Slot 0	14
2.5.2	Slot 1	15
2.5.3	Slot 2	16
A	Summary	17
A.1	Status	17
A.2	Comments	17

1 Front

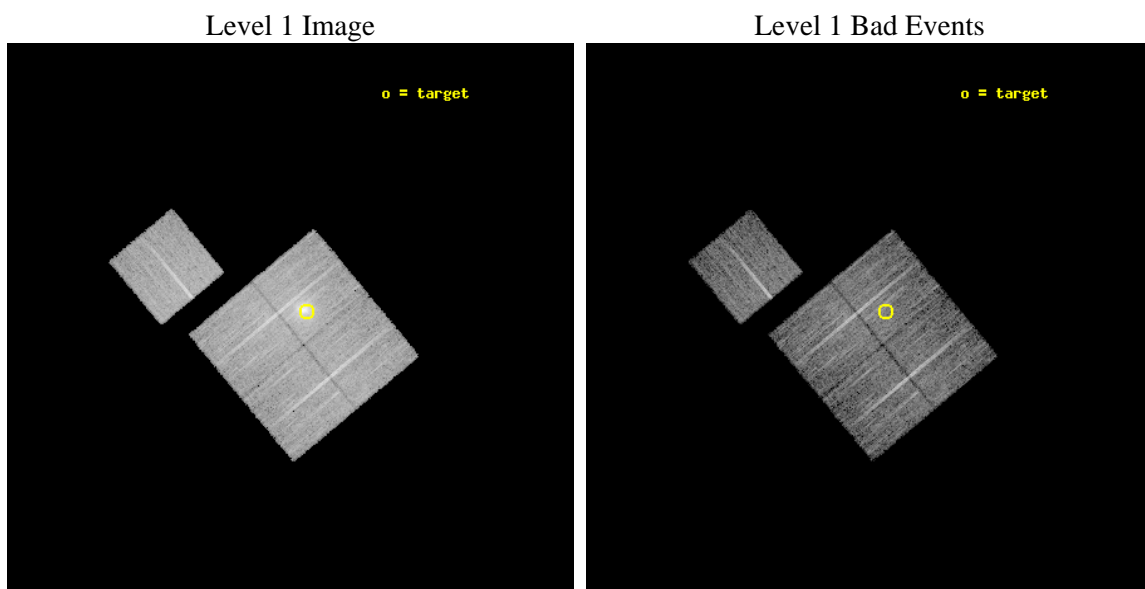
seq_num	800661	Sequence number
obs_id	8266	Observation id
title	Chandra observations of flux-limited sample of low-redshift galaxy clusters - A	Proposal title
observer	Dr. Stephen Murray	Principal investigator
object	RXJ1539.5-8335	Source name
dtcycle	0	
cycle	P	events from which exps? Prim/Second/Both
ra_targ	234.855	Observer's specified target RA [deg]
dec_targ	-83.592778	Observer's specified target Dec [deg]
ra_nom	235.103864417	Nominal RA [deg]
dec_nom	-83.618357766259	Nominal Dec [deg]
roll_nom	320.1709526929	Nominal Roll [deg]
revision	2	Processing version of data
ontime	8094.059081912	Sum of GTIs [s]
livetime	7988.3042412473	Livetime [s]
ontime0	8097.2000622749	Sum of GTIs [s]
ontime1	8094.059081912	Sum of GTIs [s]
ontime2	8097.2000622749	Sum of GTIs [s]
ontime3	8094.059081912	Sum of GTIs [s]
ontime6	8097.2000622749	Sum of GTIs [s]
l2events	44981	Number of level 2 events



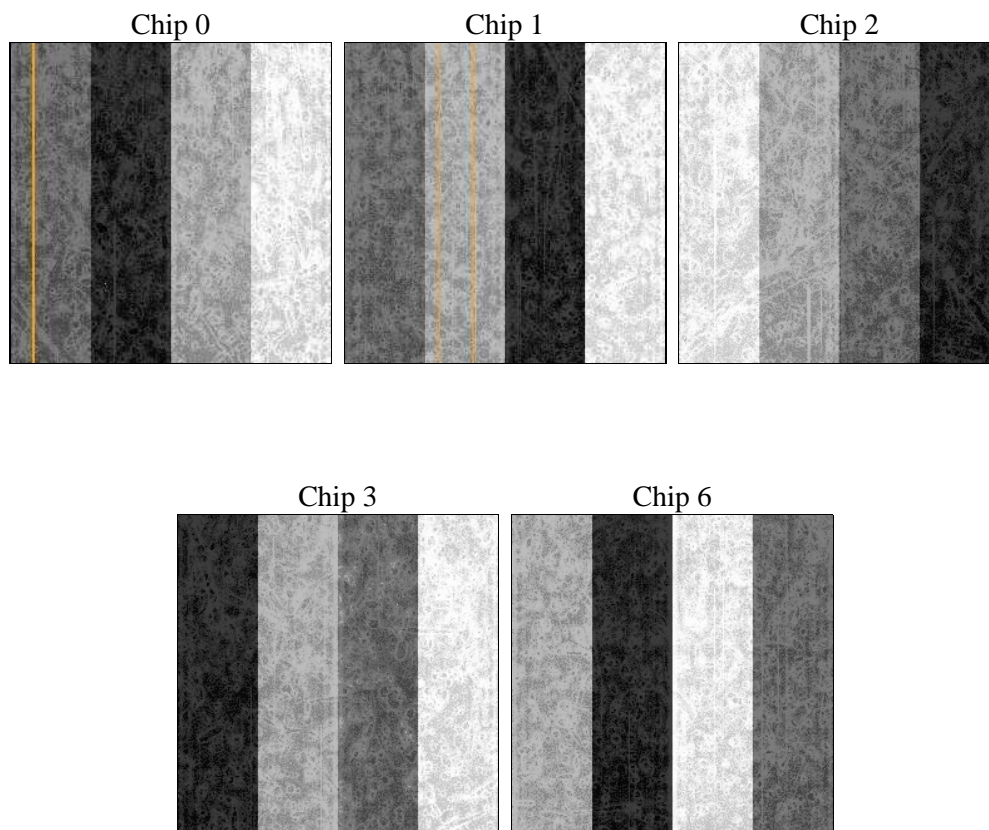
2 OBI

2.1 OBI

2.1.1 Images



2.1.2 Bias



2.1.3 Parameters

obi_num	0	Obi number	sched_exp_time	8000.000000	[s] Scheduled observation exposure time
ascdsver	8.4.4	Processing system revision	ontime	8094.059081912	Sum of GTIs [s]
caldsver	4.4.9	 	ontime0	8097.2000622749	Sum of GTIs [s]
date	2012-04-27T01:49:40	Date and time of file creation	ontime1	8094.059081912	Sum of GTIs [s]
revision	2	Processing version of data	ontime2	8097.2000622749	Sum of GTIs [s]
			ontime3	8094.059081912	Sum of GTIs [s]
			ontime6	8097.2000622749	Sum of GTIs [s]
			l1events	345960	Number of level 1 events

2.1.4 Events

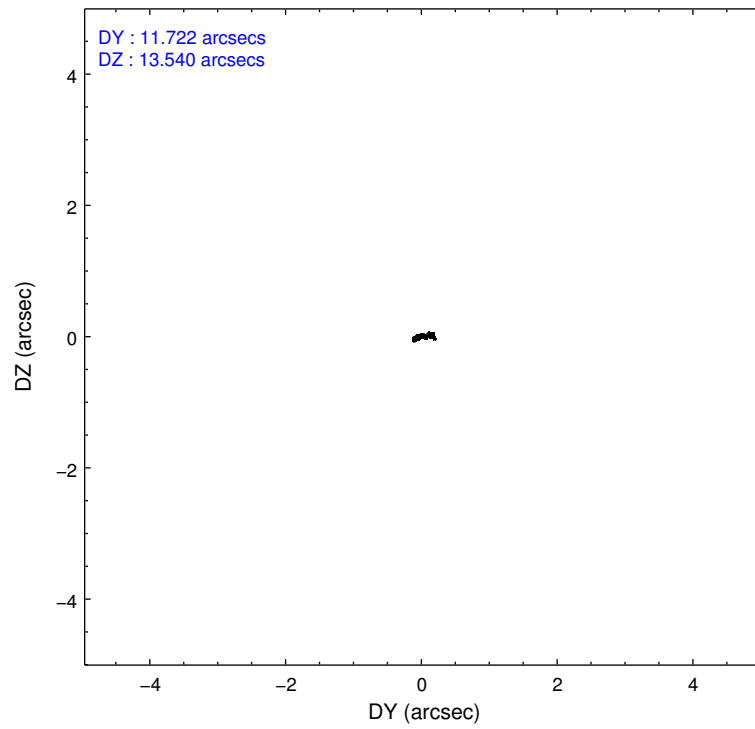
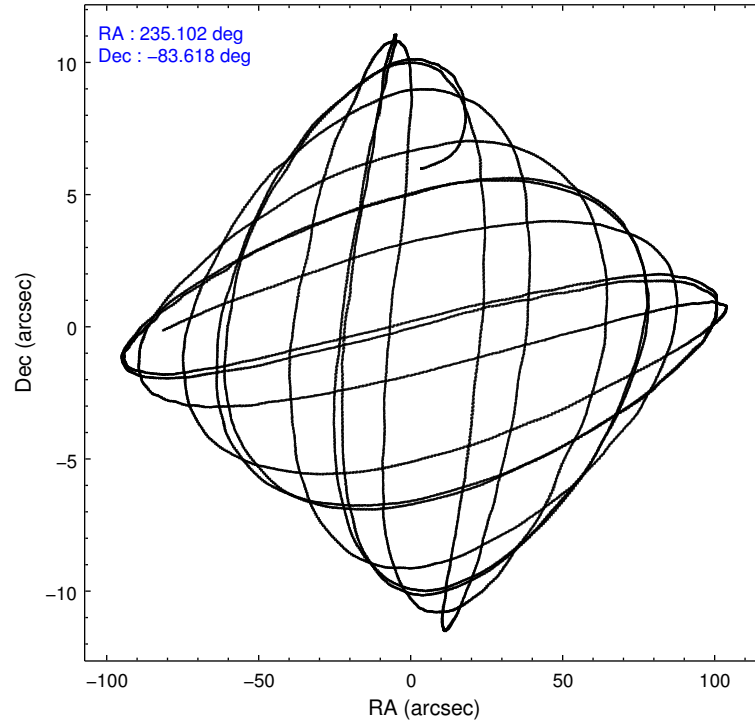
	ccd 0	ccd 1	ccd 2	ccd 3	ccd 6
level 1 events	62106	62884	69754	85292	65924
rejected events	55739	55296	63022	61744	59252
rejected %	89%	87%	90%	72%	89%

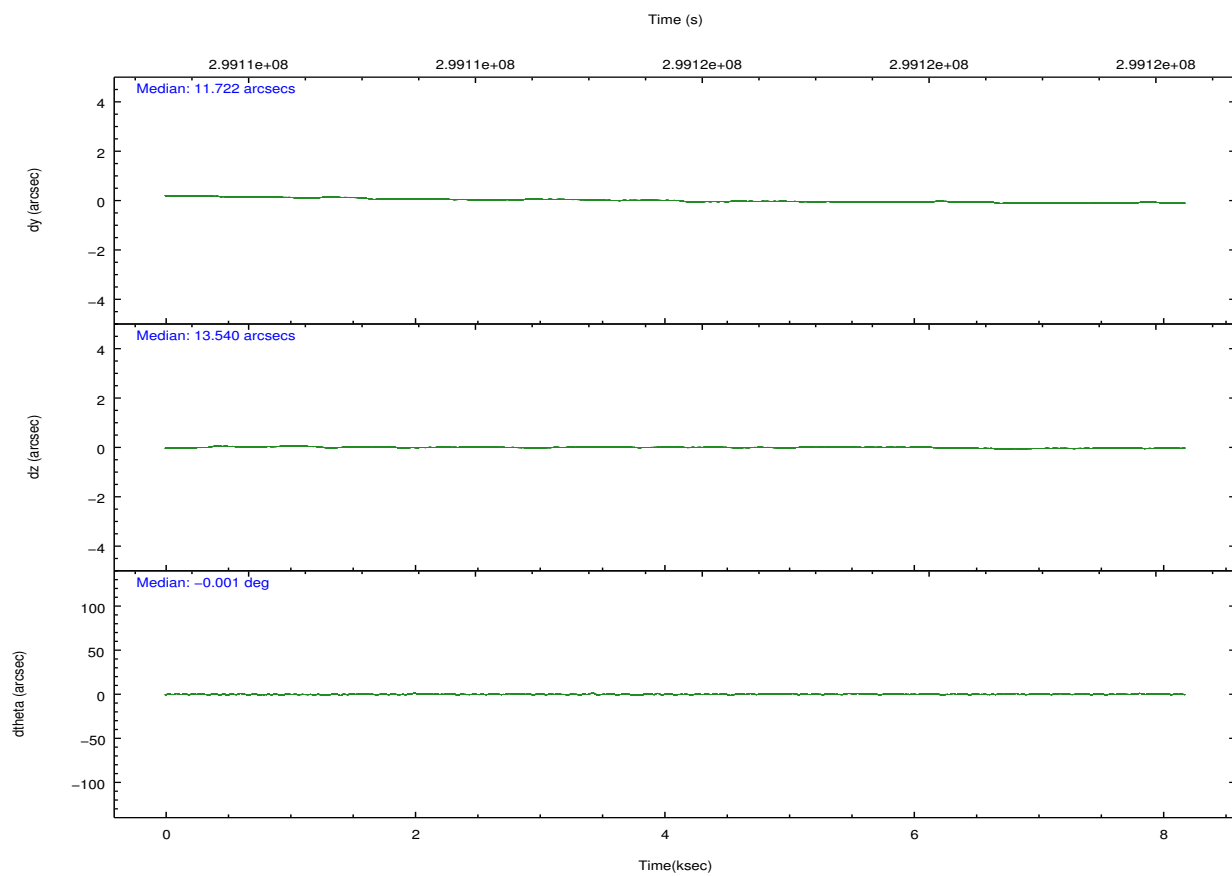
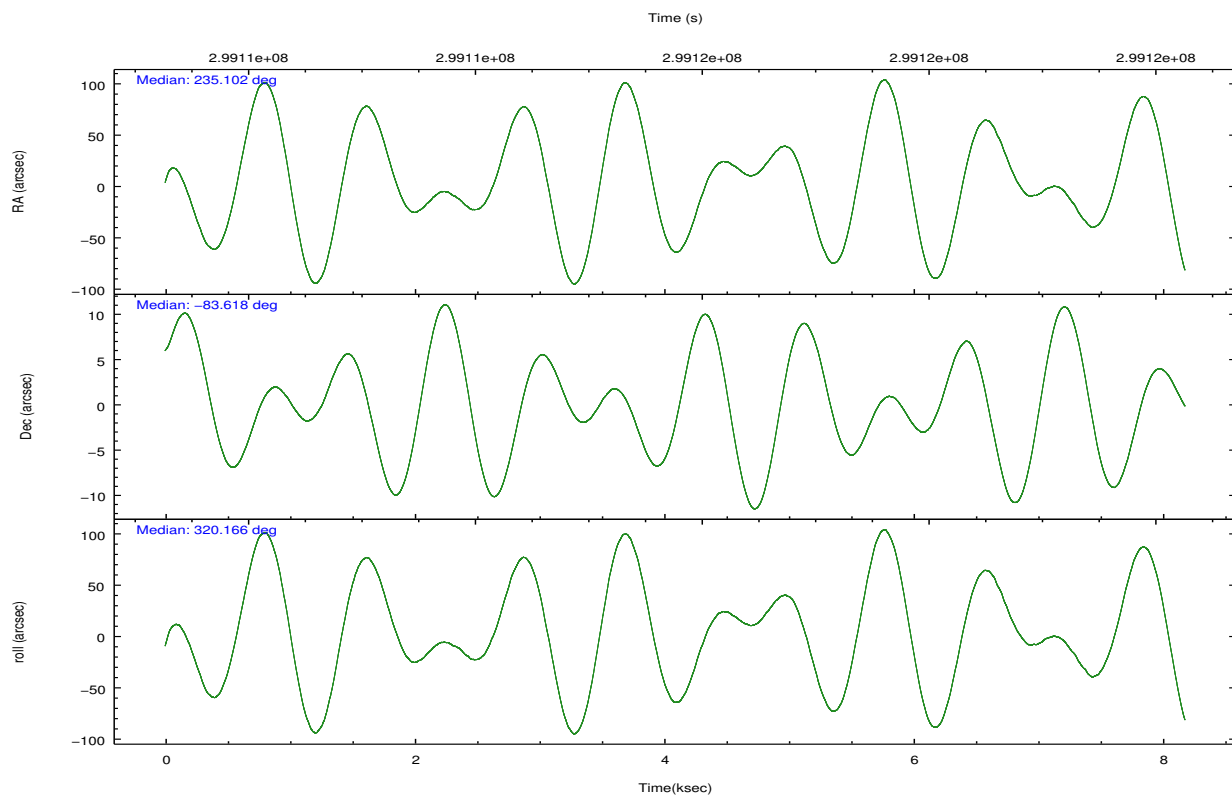
	ccd 0	ccd 1	ccd 2	ccd 3	ccd 6
grade 0 events	2325	2807	2684	16556	2310
	3%	4%	3%	19%	3%
grade 1 events	38	29	47	100	35
	0%	0%	0%	0%	0%
grade 2 events	1461	1630	1457	3011	1444
	2%	2%	2%	3%	2%
grade 3 events	736	840	717	1161	728
	1%	1%	1%	1%	1%
grade 4 events	663	789	703	1178	743
	1%	1%	1%	1%	1%
grade 5 events	2193	2489	2086	2594	2479
	3%	3%	2%	3%	3%
grade 6 events	1186	1529	1173	1666	1456
	1%	2%	1%	1%	2%
grade 7 events	53504	52771	60887	59026	56729
	86%	83%	87%	69%	86%

2.2 Compared Parameters

Parameter	Planned	Actual	Parameter	Planned	Actual
Instrument	ACIS	ACIS	Obspar format version number	7	7
Detector	ACIS-01236	ACIS-01236	Obspar file type	PREDICTED	ACTUAL
Grating	NONE	NONE	Obspar update status	NONE	UPDATED
Data mode	VFAINT	VFAINT	Number of optional ACIS chips dropped	0	0
Observation mode	POINTING	POINTING	On-chip summing requested	N	N
[deg] Pointing RA	234.859954	235.1038644169959	Subarray requested	NONE	NONE
[deg] Pointing Dec	-83.613795	-83.61835776625855	Alternating exposures requested	N	N
[deg] Pointing Roll	319.719874	320.1709526928951	[s] Primary exposure time	0.000000	3.1
[mm] SIM focus pos	-0.782348	-0.7809083437167272			
[mm] SIM defocus	0	0.001439871863259334			
[mm] SIM translation stage pos	-228.592463	-228.5990329025337			
[mm] SIM translation stage offset	-5	-4.993420100396037			
[s] Observation start time (MET)	299111850.184000	299110893.02473			
Observation start date	2007-06-24T22:36:25	2007-06-24T22:21:33			
[s] Observation end time (MET)	299119850.184000	299120578.76269			
Observation end date	2007-06-25T00:49:45	2007-06-25T01:02:58			
Read mode	TIMED	TIMED			

2.3 Aspect



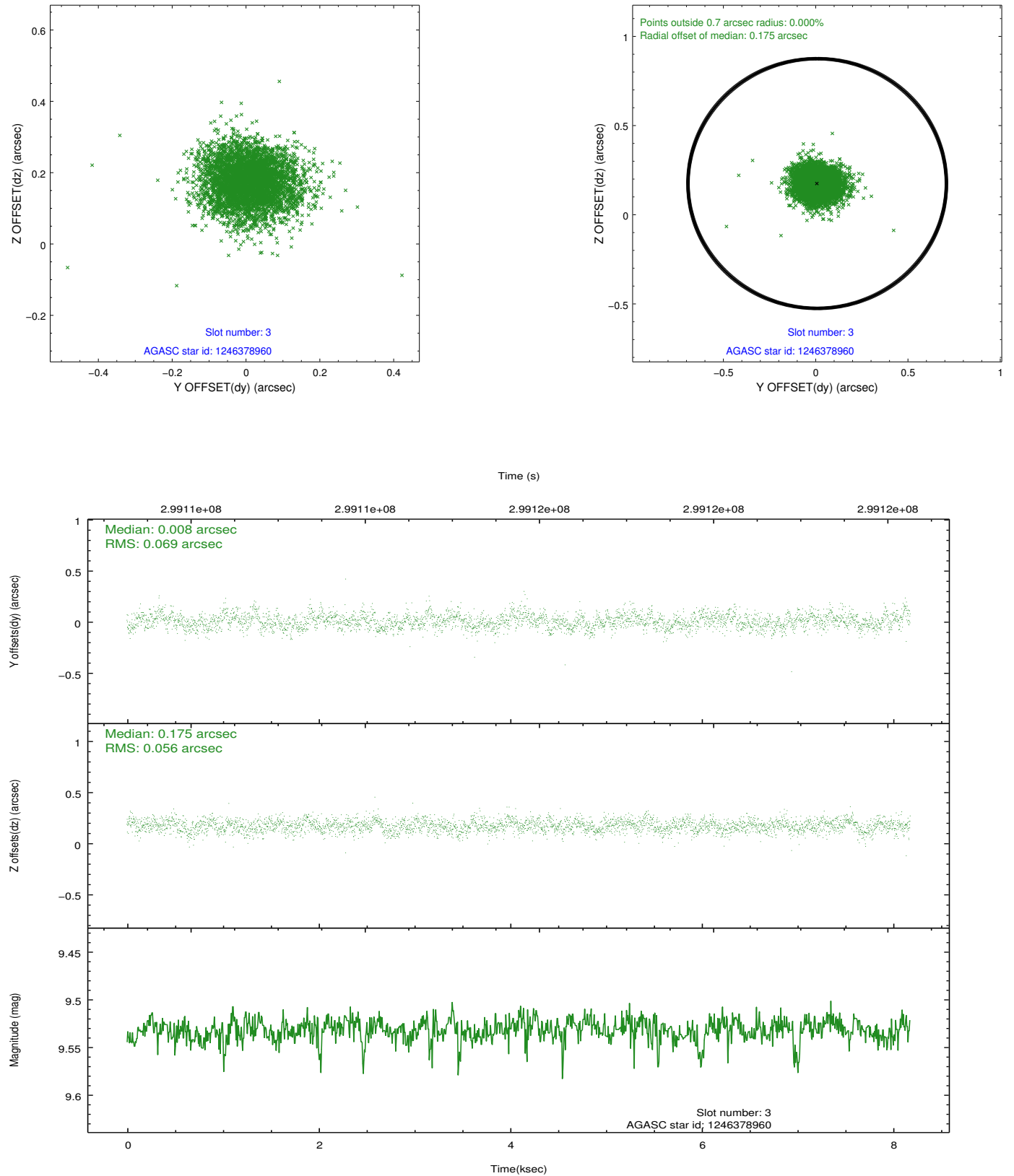


Slot Statistics

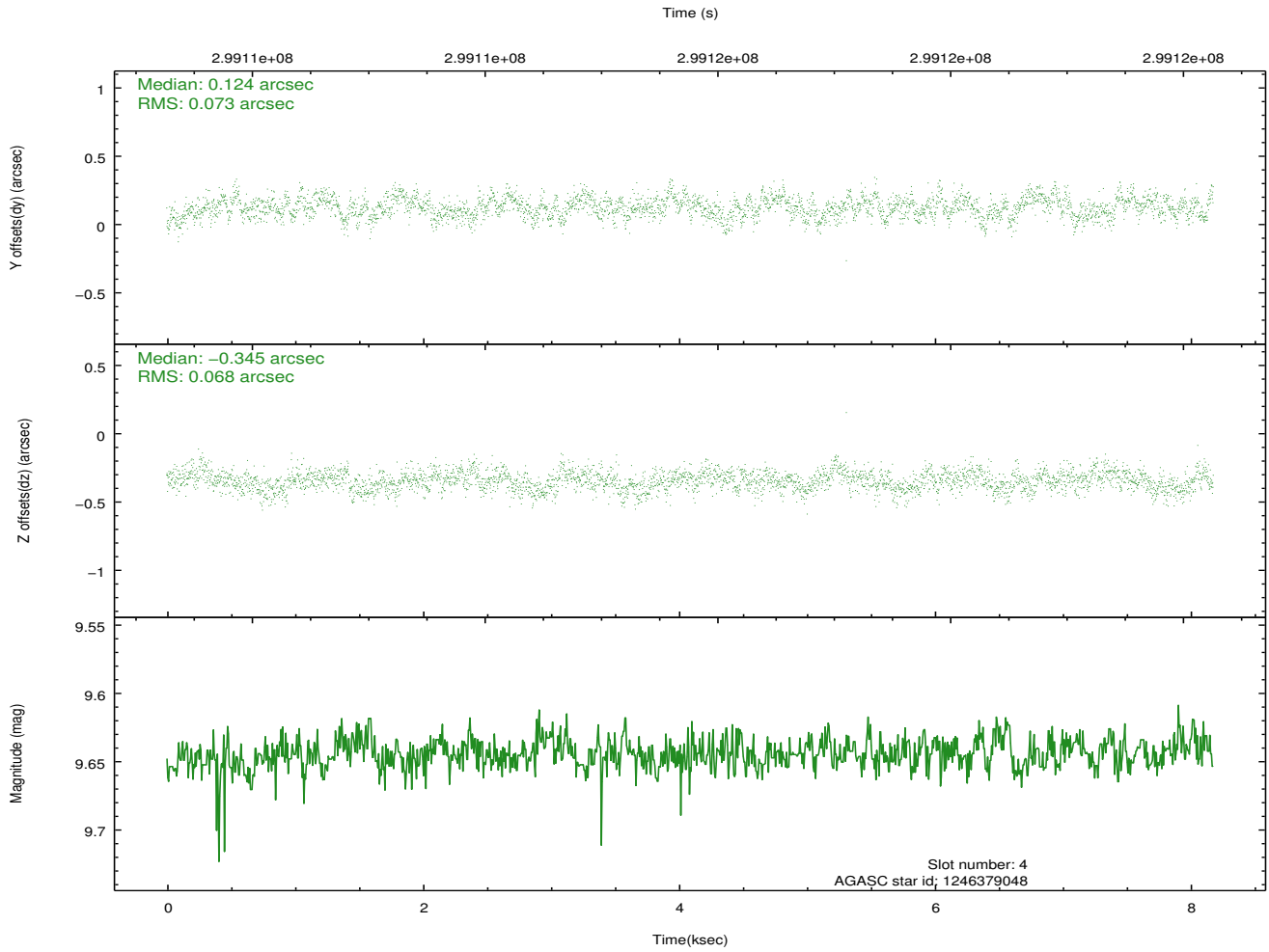
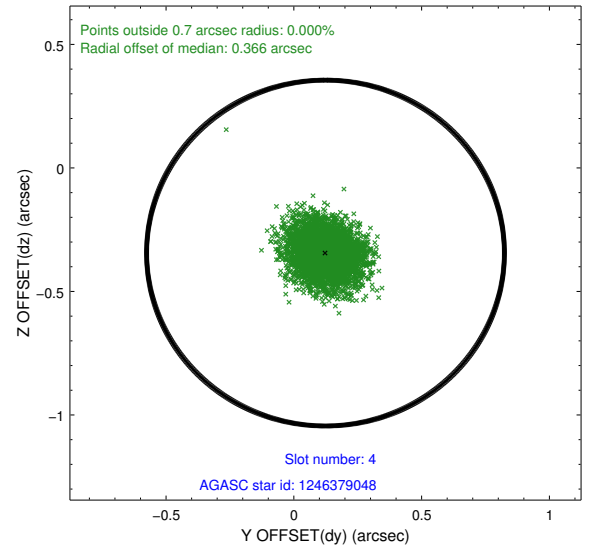
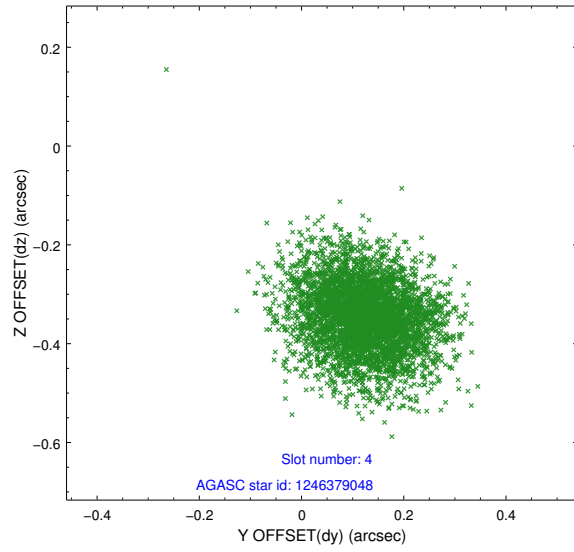
slot	status	id	mag	n_pts	med_dy	med_dz	dr1	dr2	ra	dec	mean_y	mean_z
0	FID	ACIS-I-1	7.22	1995	0.119	-0.090	0.007	0.012	0.000000	0.000000	927.82	-939.68
1	FID	ACIS-I-5	7.22	1995	-0.251	0.104	0.007	0.011	0.000000	0.000000	-1820.23	957.67
2	FID	ACIS-I-6	7.24	1995	0.041	0.057	0.007	0.012	0.000000	0.000000	392.60	1602.86
3	GUIDE	1246378960	9.53	3988	0.008	0.175	0.093	0.152	230.830512	-83.232468	-2151.57	-102.69
4	GUIDE	1246379048	9.64	3987	0.124	-0.345	0.106	0.171	234.989018	-82.864384	-1700.39	2094.84
5	GUIDE	1246385232	9.68	3987	-0.069	0.057	0.107	0.172	228.759238	-83.655289	-1668.65	-1777.83
6	GUIDE	1246395600	10.00	3982	-0.067	0.221	0.140	0.233	238.998321	-84.013078	2149.73	-135.64
7	GUIDE	1248070608	9.75	3987	0.005	-0.109	0.099	0.160	241.247929	-83.538512	1888.53	1767.08

2.4 Star Slots

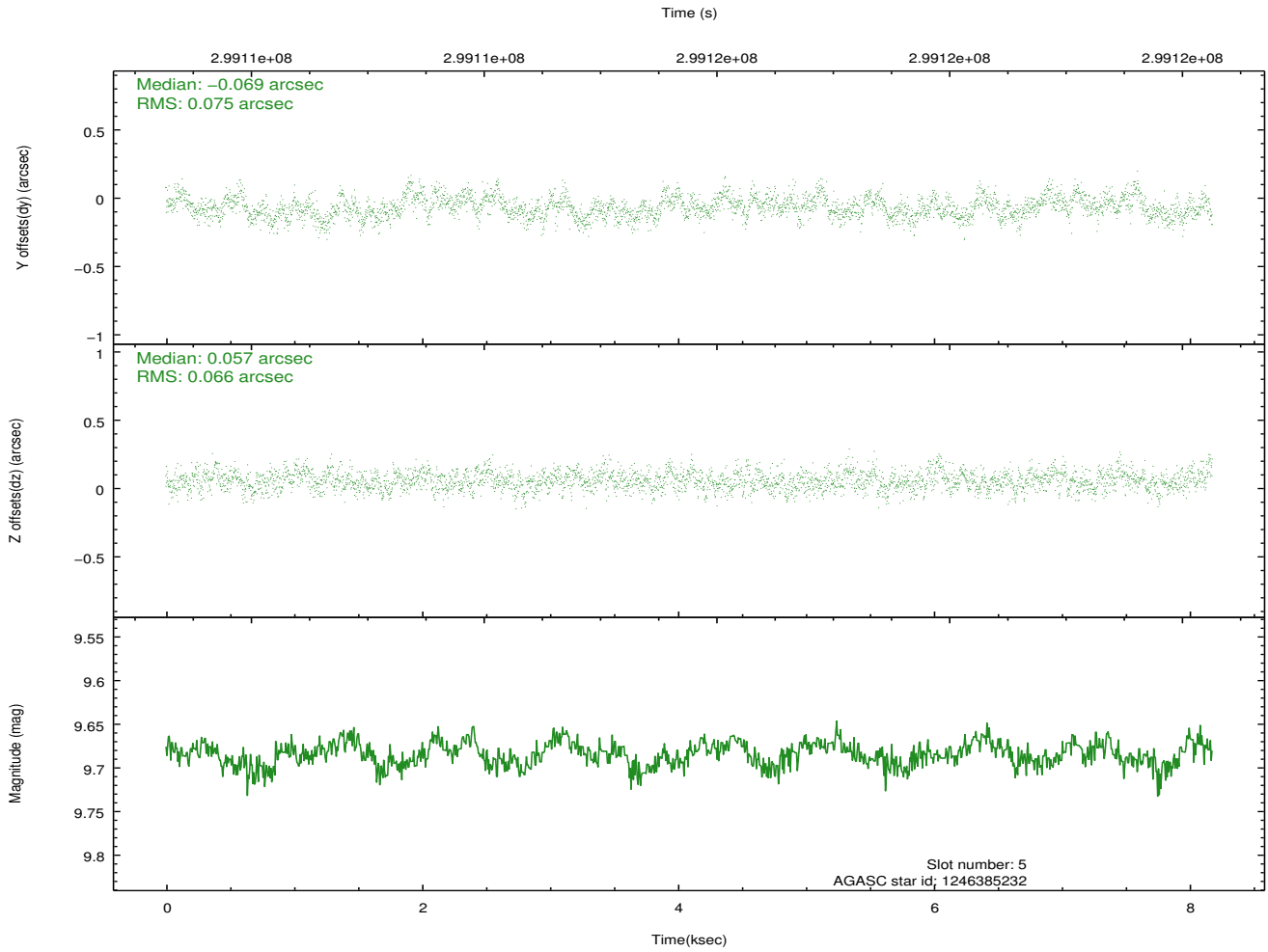
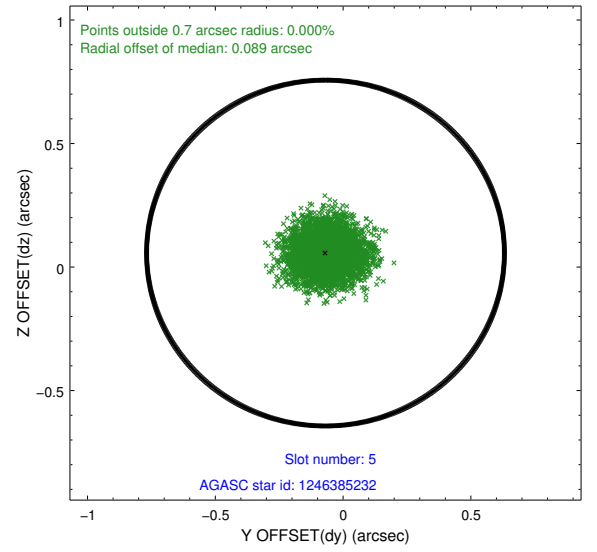
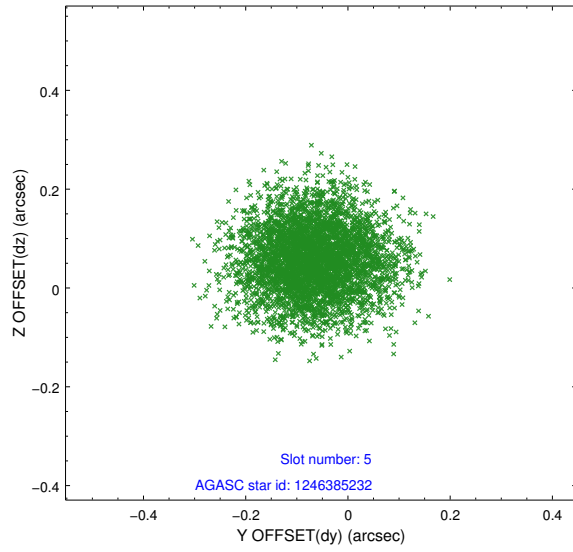
2.4.1 Slot 3



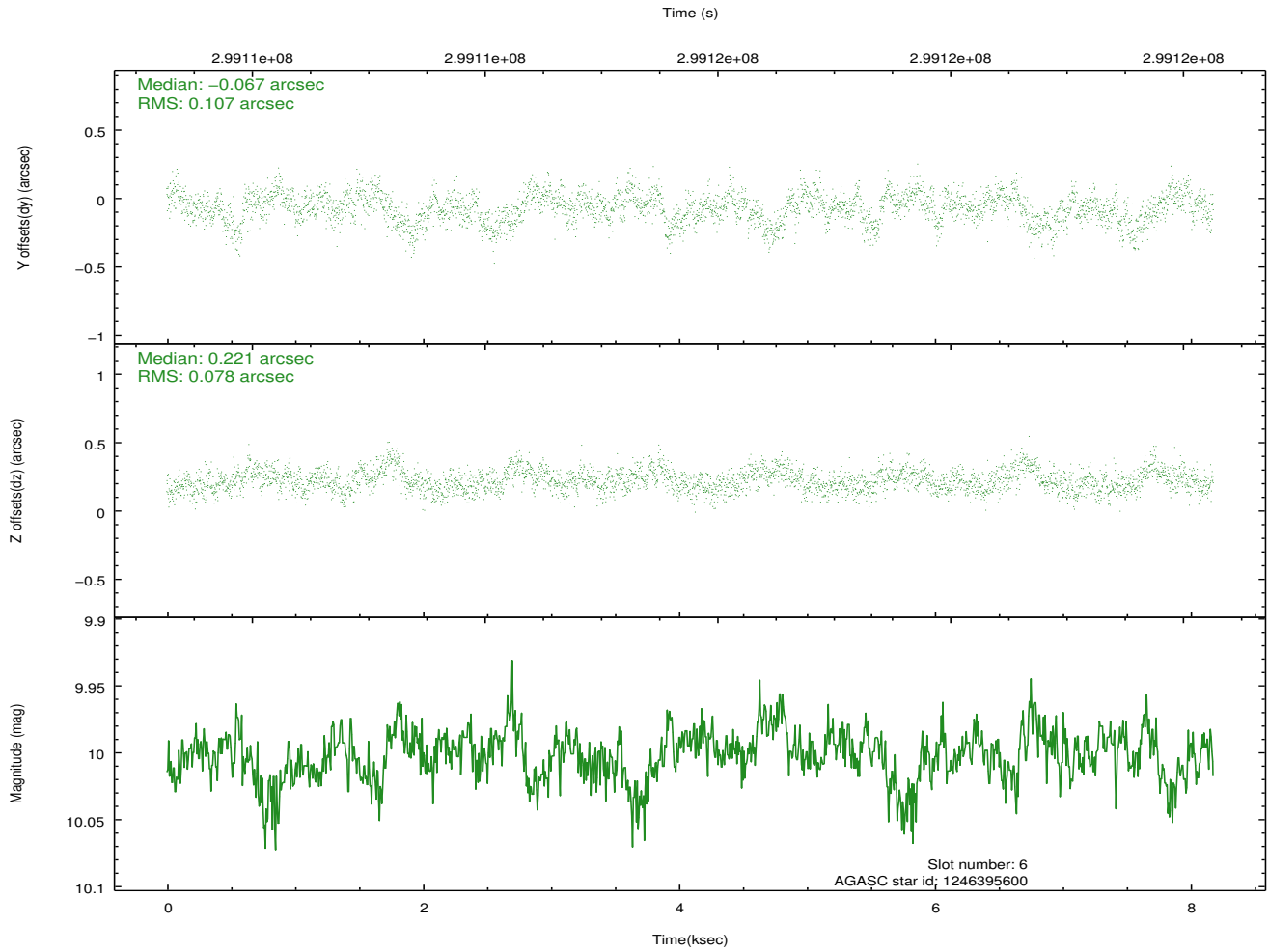
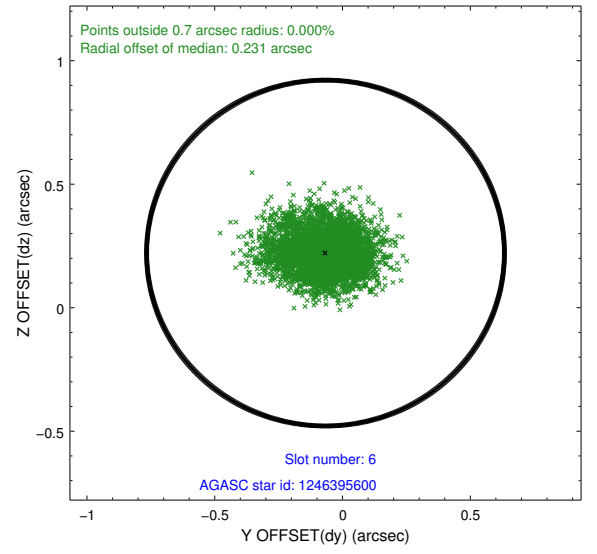
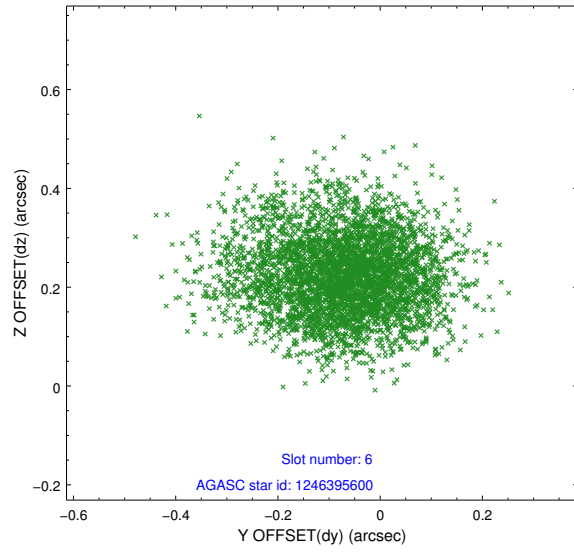
2.4.2 Slot 4



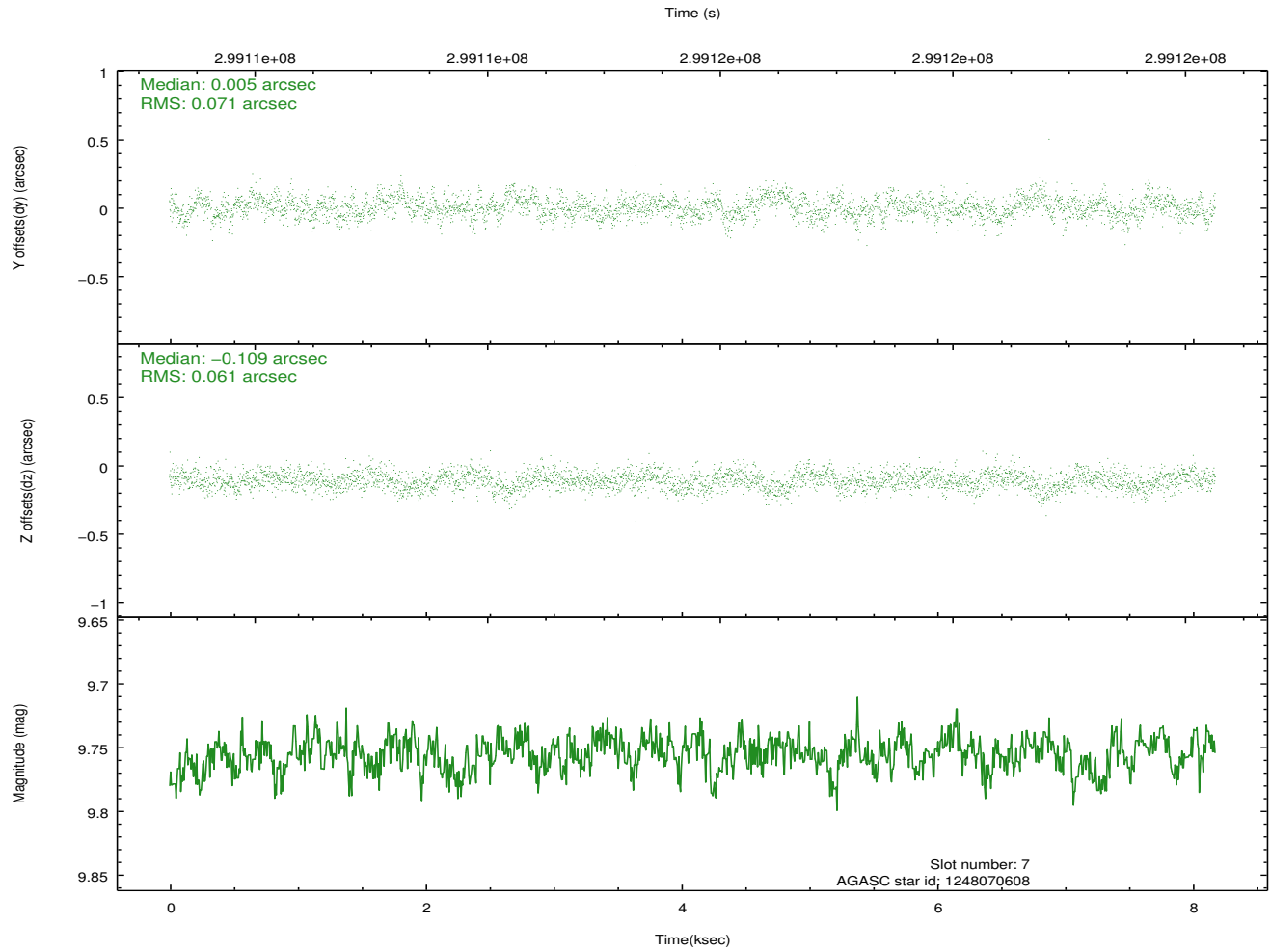
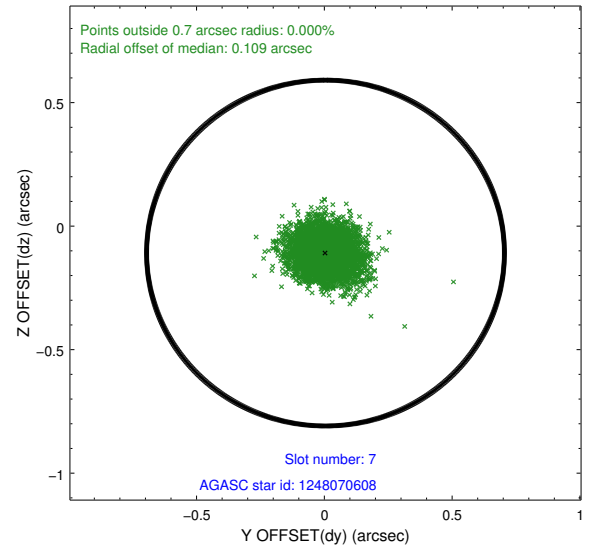
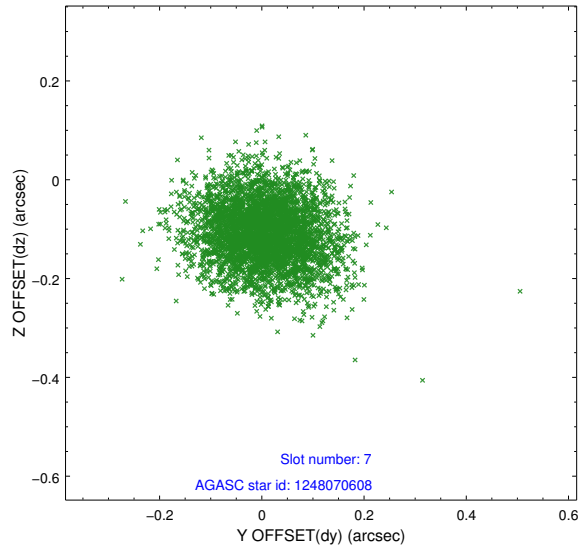
2.4.3 Slot 5



2.4.4 Slot 6

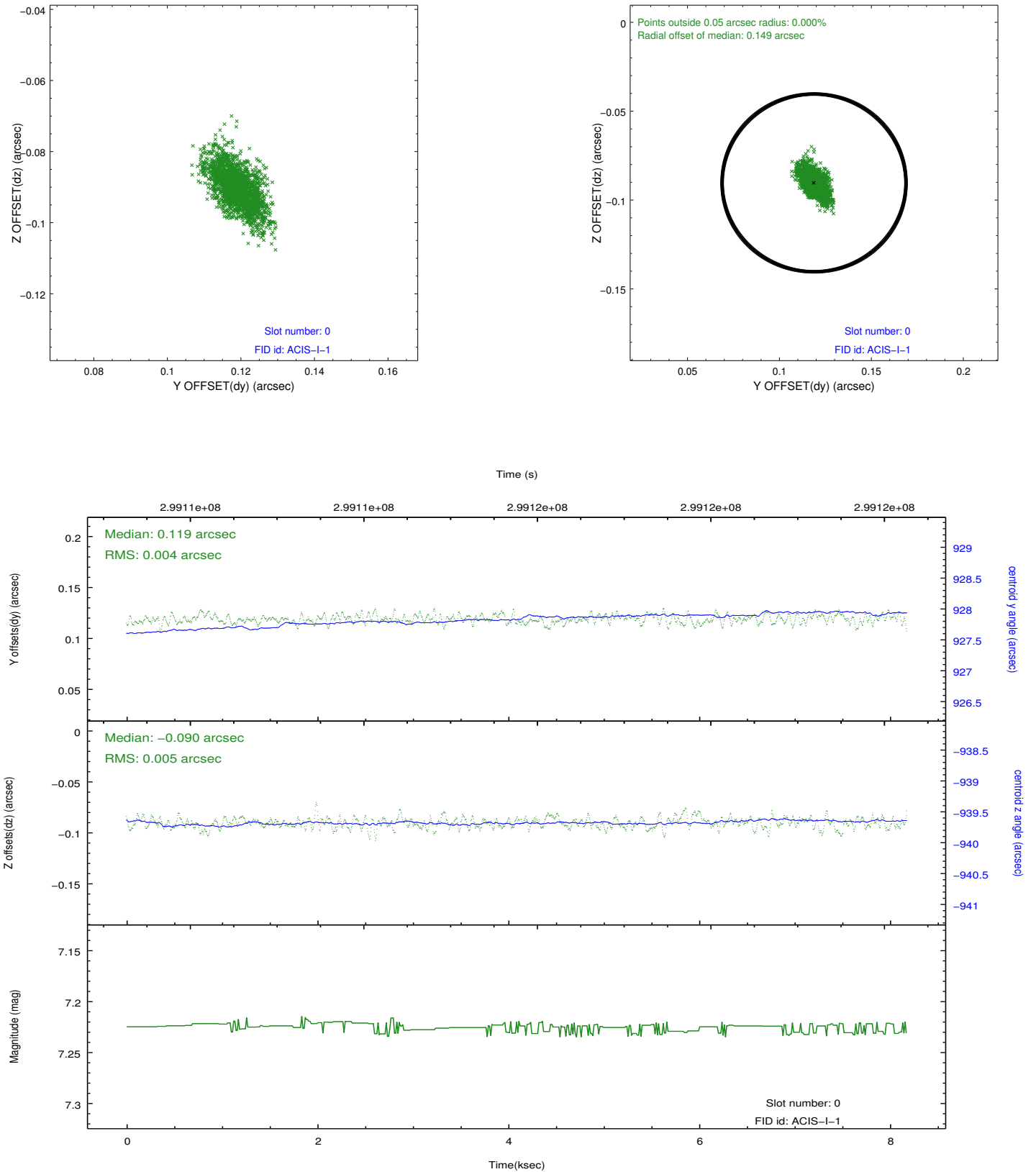


2.4.5 Slot 7

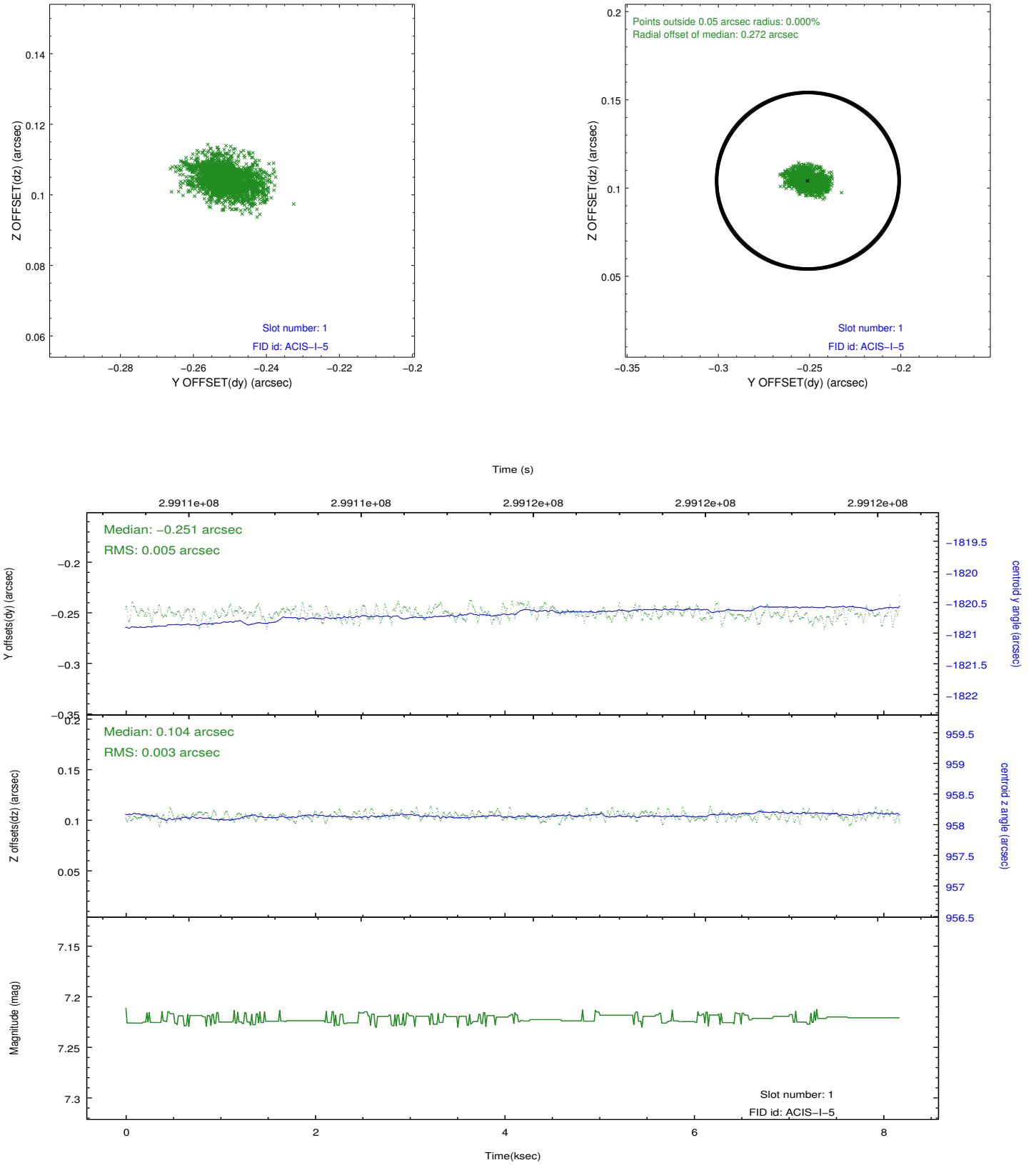


2.5 FID Slots

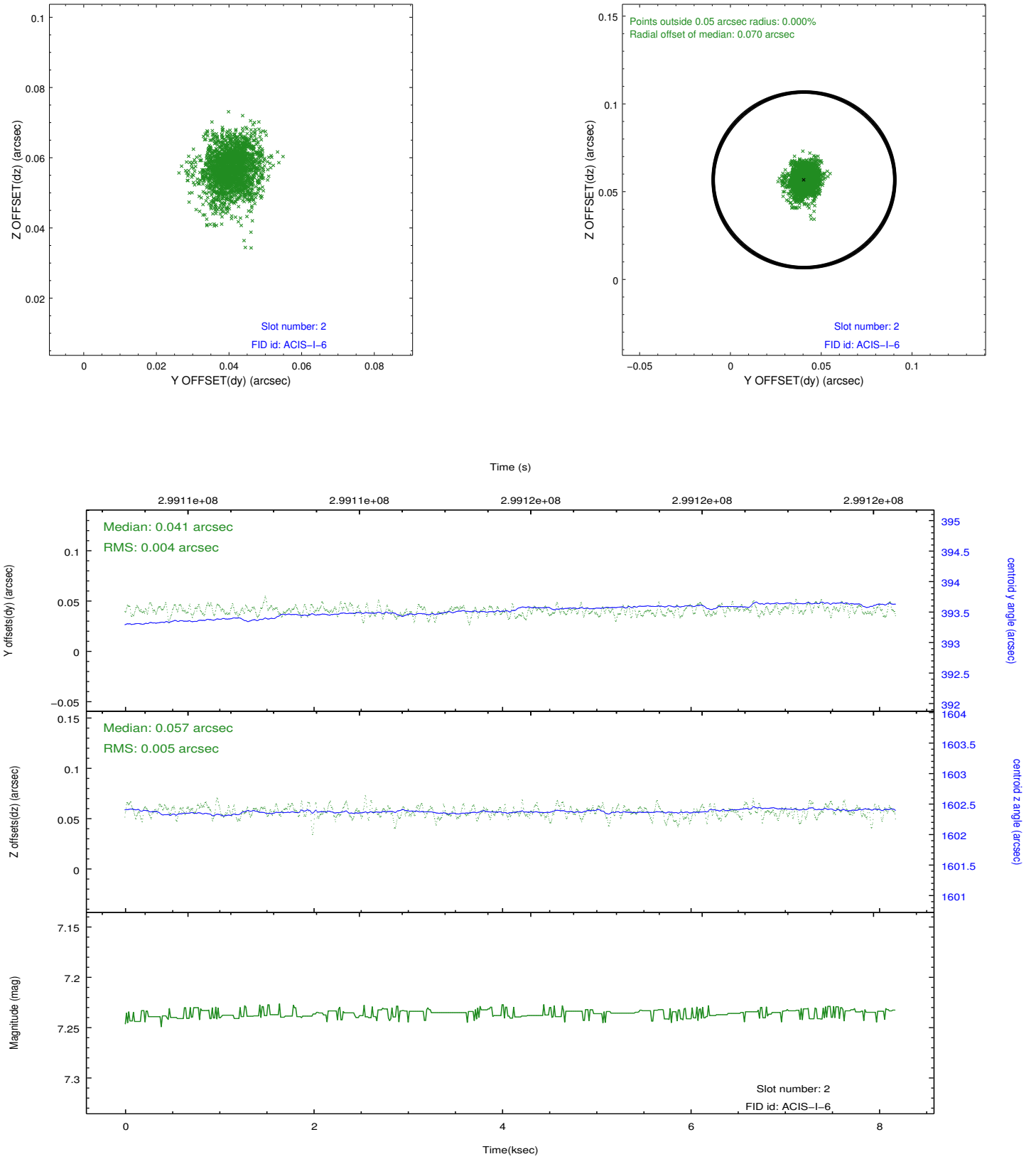
2.5.1 Slot 0



2.5.2 Slot 1



2.5.3 Slot 2



A Summary

A.1 Status

V&V Scientist	Jen Lauer
V&V Date (YYYY-MM-DD)	2012.04.27
V&V Edition	1
V&V Disposition and Status	OK
V&V Charge Time	8.09405908

A.2 Comments