

V&V Reference Report

L2 ASCDS Version : 8.4.5

Observation 7910 - L2 Version 3
Chandra X-Ray Center

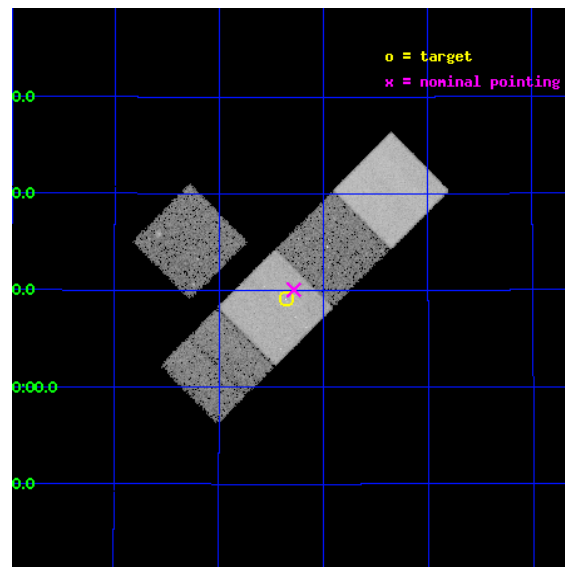
L2 Processing Date : Jun 28 2012

Contents

1	Front	2
2	OBI	3
2.1	OBI	3
2.1.1	Images	3
2.1.2	Bias	3
2.1.3	Parameters	4
2.1.4	Events	4
2.2	Compared Parameters	5
2.3	Aspect	6
2.4	Star Slots	9
2.4.1	Slot 3	9
2.4.2	Slot 4	10
2.4.3	Slot 5	11
2.4.4	Slot 6	12
2.4.5	Slot 7	13
2.5	FID Slots	14
2.5.1	Slot 0	14
2.5.2	Slot 1	15
2.5.3	Slot 2	16
A	Summary	17
A.1	Status	17
A.2	Comments	17

1 Front

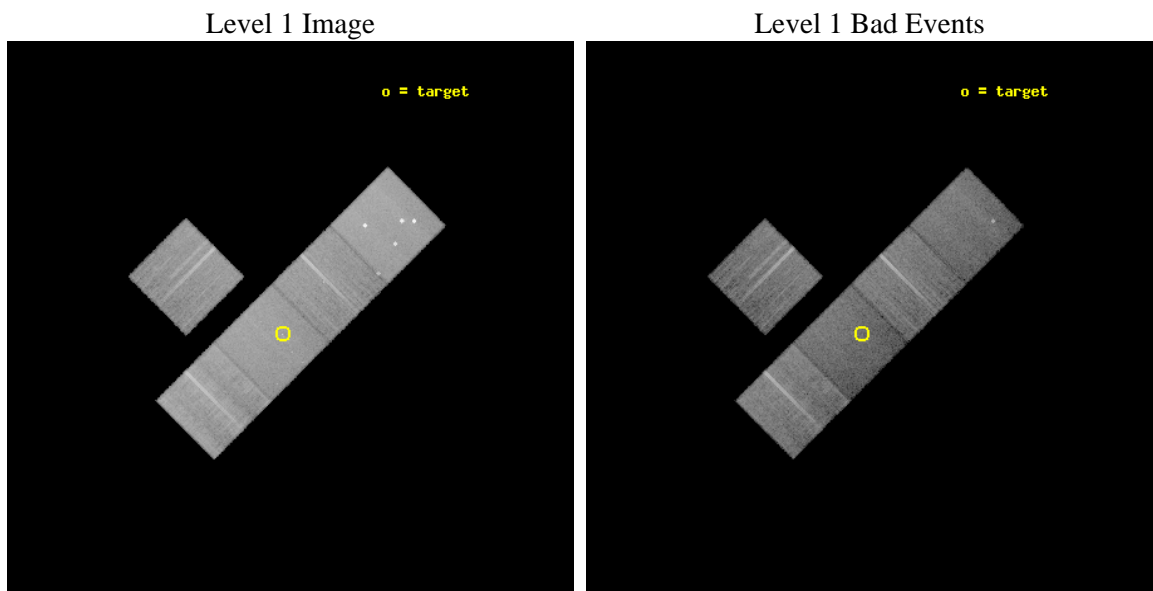
seq_num	800628	Sequence number
obs_id	7910	Observation id
title	A search for clusters around luminous radio-quiet FRI quasars	Prop
observer	Professor Andrew Fabian	Principal investigator
object	7C1030+4309	Source name
dtcycle	0	
cycle	P	events from which exps? Prim/Second/Both
ra_targ	157.589583	Observer's specified target RA [deg]
dec_targ	43.152167	Observer's specified target Dec [deg]
ra_nom	157.5710284344	Nominal RA [deg]
dec_nom	43.168007130904	Nominal Dec [deg]
roll_nom	135.03932700832	Nominal Roll [deg]
revision	3	Processing version of data
ontime	20031.962837815	Sum of GTIs [s]
livetime	19770.230496023	Livetime [s]
ontime3	20028.698727489	Sum of GTIs [s]
ontime5	20035.062788069	Sum of GTIs [s]
ontime6	20031.880767643	Sum of GTIs [s]
ontime7	20031.962837815	Sum of GTIs [s]
ontime8	20031.798677802	Sum of GTIs [s]
l2events	204121	Number of level 2 events



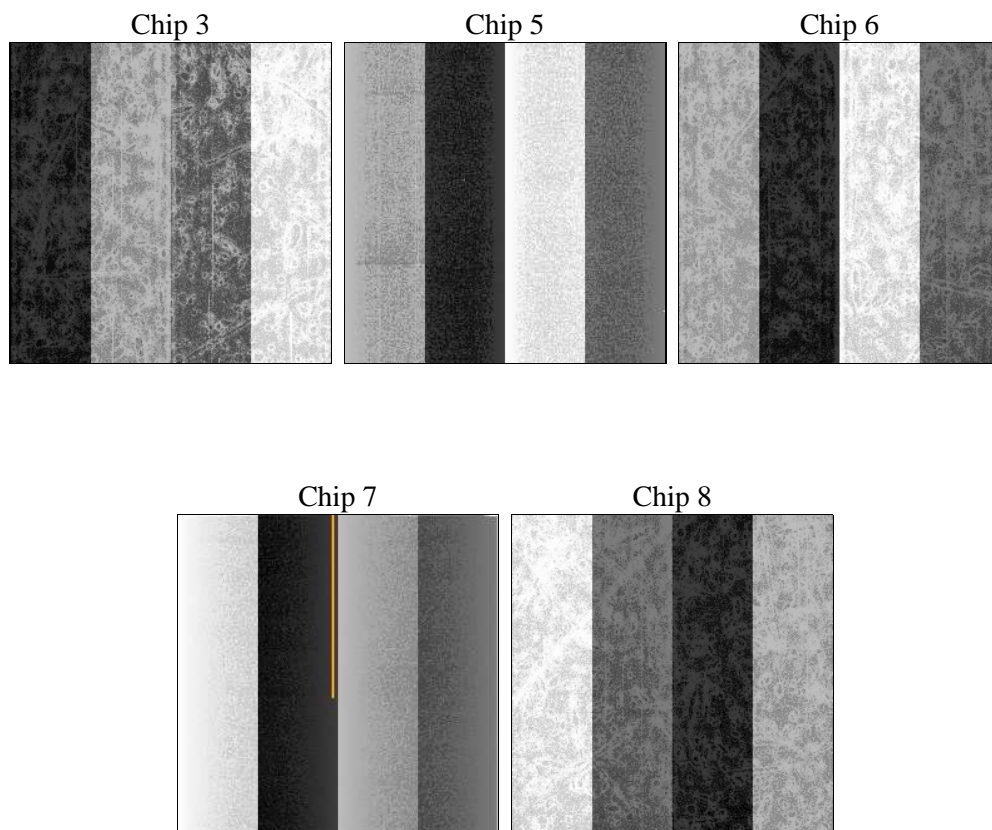
2 OBI

2.1 OBI

2.1.1 Images



2.1.2 Bias



2.1.3 Parameters

obi_num	0	Obi number	sched_exp_time	20000.000000	[s] Scheduled observation exposure time
ascdsver	8.4.5	Processing system revision	ontime	20031.962837815	Sum of GTIs [s]
caldsver	4.5.0	 	ontime3	20028.698727489	Sum of GTIs [s]
date	2012-06-28T12:52:52	Date and time of file creation	ontime5	20035.062788069	Sum of GTIs [s]
revision	3	Processing version of data	ontime6	20031.880767643	Sum of GTIs [s]
			ontime7	20031.962837815	Sum of GTIs [s]
			ontime8	20031.798677802	Sum of GTIs [s]
			l1events	853774	Number of level 1 events

2.1.4 Events

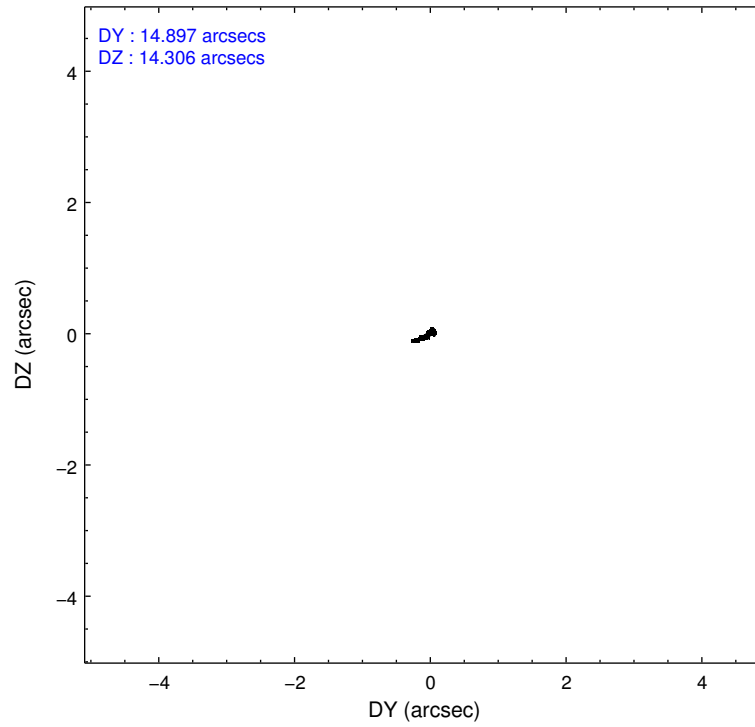
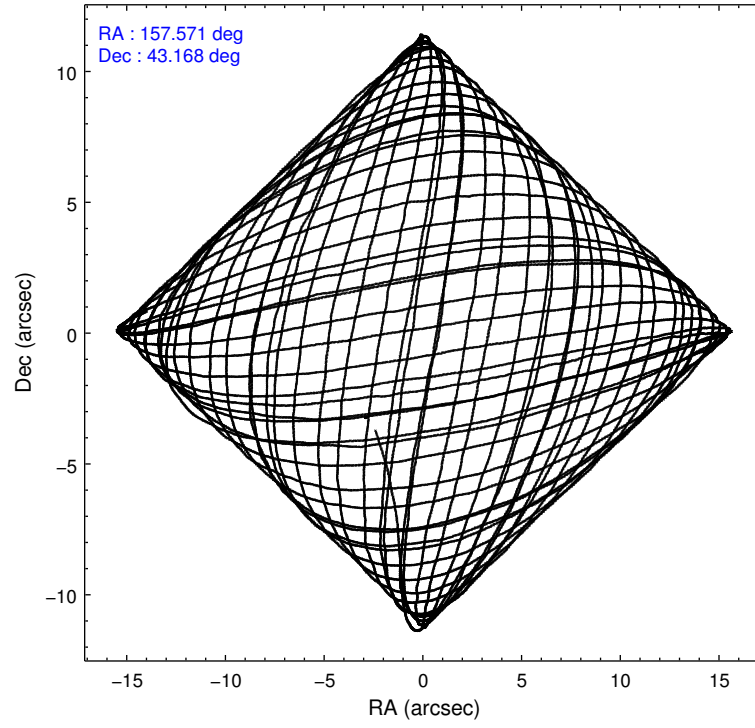
	ccd 3	ccd 5	ccd 6	ccd 7	ccd 8
level 1 events	138085	216684	148631	162995	187379
rejected events	124402	102353	133109	89153	143583
rejected %	90%	47%	89%	54%	76%

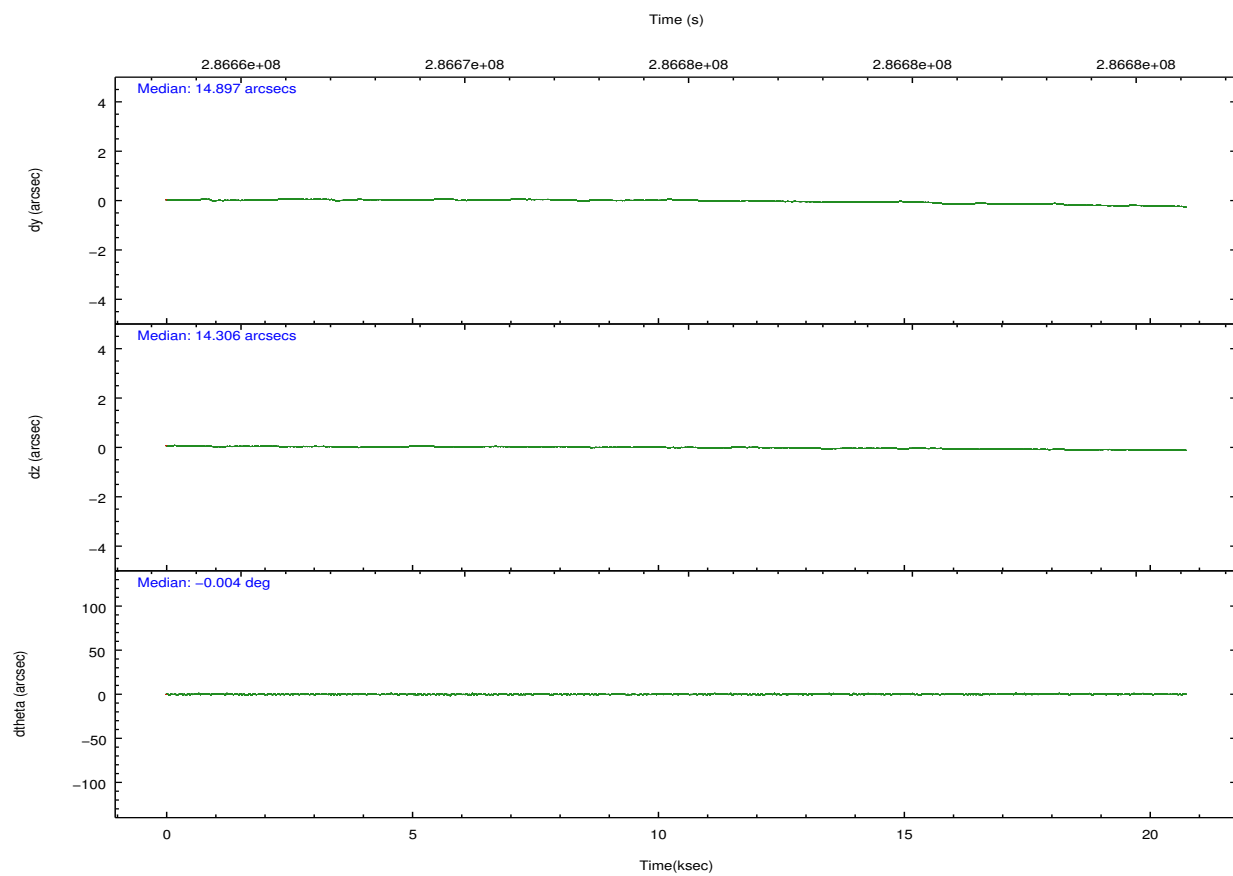
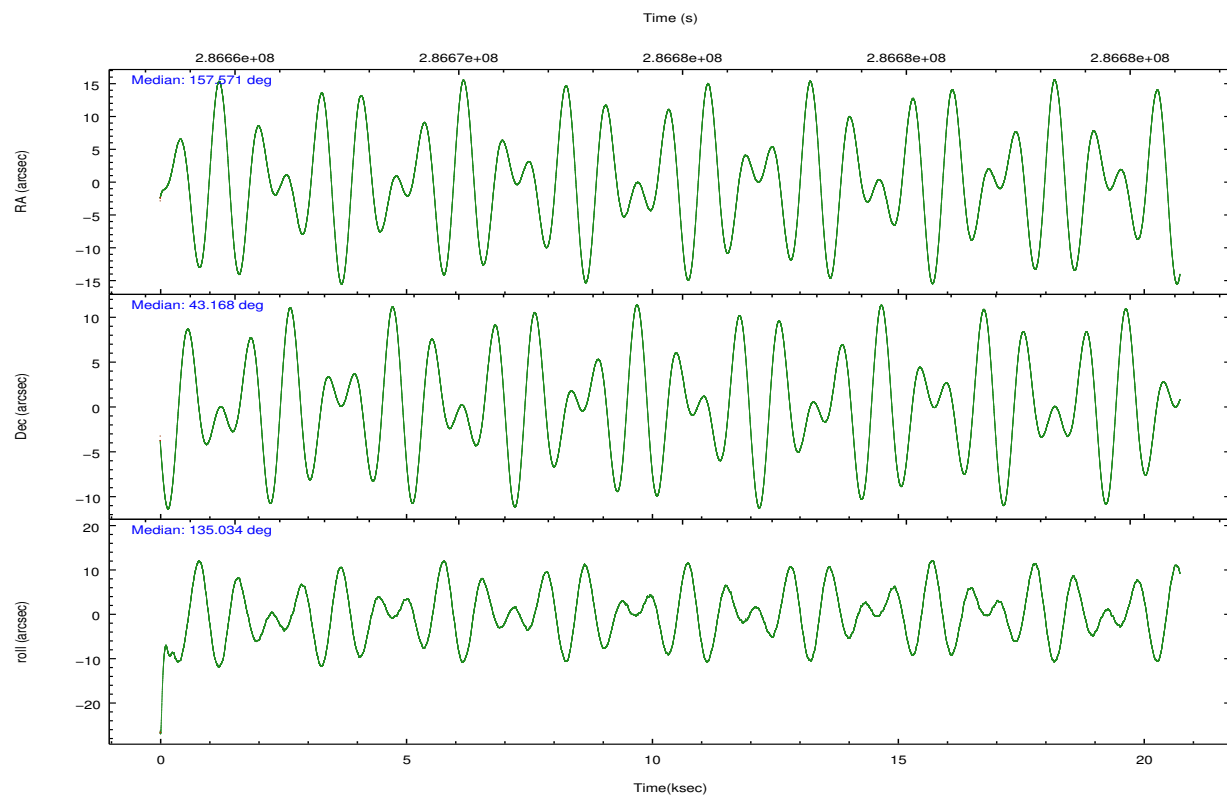
	ccd 3	ccd 5	ccd 6	ccd 7	ccd 8
grade 0 events	4859	22981	5624	7101	12476
	3%	10%	3%	4%	6%
grade 1 events	68	1086	67	183	135
	0%	0%	0%	0%	0%
grade 2 events	2985	31868	3437	15135	10237
	2%	14%	2%	9%	5%
grade 3 events	1594	3949	1624	6720	4659
	1%	1%	1%	4%	2%
grade 4 events	1574	3794	1639	6661	4220
	1%	1%	1%	4%	2%
grade 5 events	5705	15403	5919	16840	8533
	4%	7%	3%	10%	4%
grade 6 events	2677	51757	3200	38242	12211
	1%	23%	2%	23%	6%
grade 7 events	118623	85846	127121	72113	134908
	85%	39%	85%	44%	71%

2.2 Compared Parameters

Parameter	Planned	Actual	Parameter	Planned	Actual
Instrument	ACIS	ACIS	Obspar format version number	7	7
Detector	ACIS-35678	ACIS-35678	Obspar file type	PREDICTED	ACTUAL
Grating	NONE	NONE	Obspar update status	NONE	UPDATED
Data mode	VFAINT	VFAINT	Number of optional ACIS chips dropped	0	0
Observation mode	POINTING	POINTING	On-chip summing requested	N	N
[deg] Pointing RA	157.607376	157.5710284343967	Subarray requested	NONE	NONE
[deg] Pointing Dec	43.161334	43.16800713090387	Alternating exposures requested	N	N
[deg] Pointing Roll	134.857847	135.0393270083218	[s] Primary exposure time	0.000000	3.1
[mm] SIM focus pos	-0.684267	-0.6828225247311905			
[mm] SIM defocus	0	0.001444936568705701			
[mm] SIM translation stage pos	-190.132523	-190.1400660498719			
[mm] SIM translation stage offset	0	0.00754346686406393			
[s] Observation start time (MET)	286665077.184000	286663873.09399			
Observation start date	2007-01-31T21:10:12	2007-01-31T20:51:13			
[s] Observation end time (MET)	286685077.184000	286685816.80753			
Observation end date	2007-02-01T02:43:32	2007-02-01T02:56:56			
Read mode	TIMED	TIMED			

2.3 Aspect



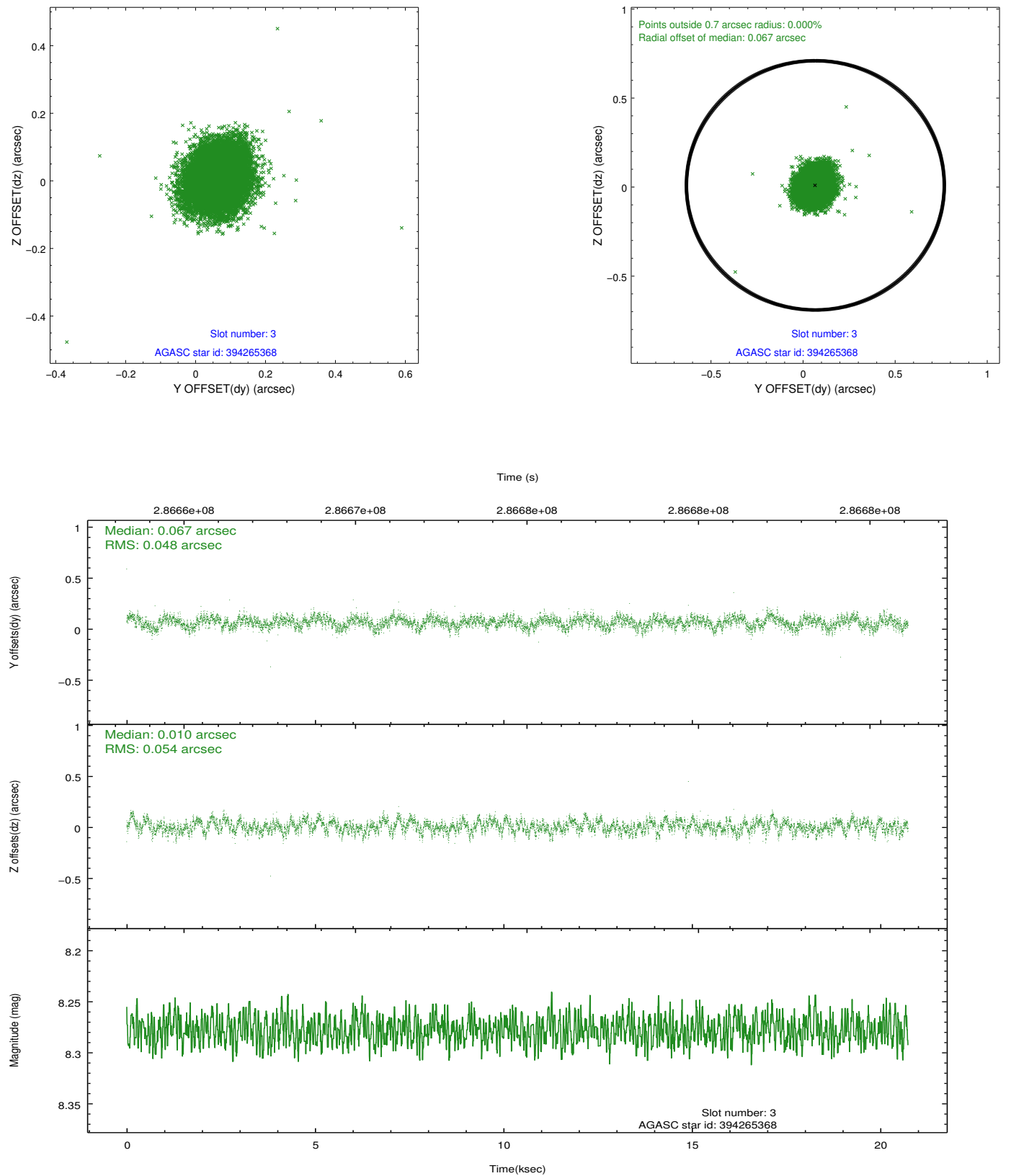


Slot Statistics

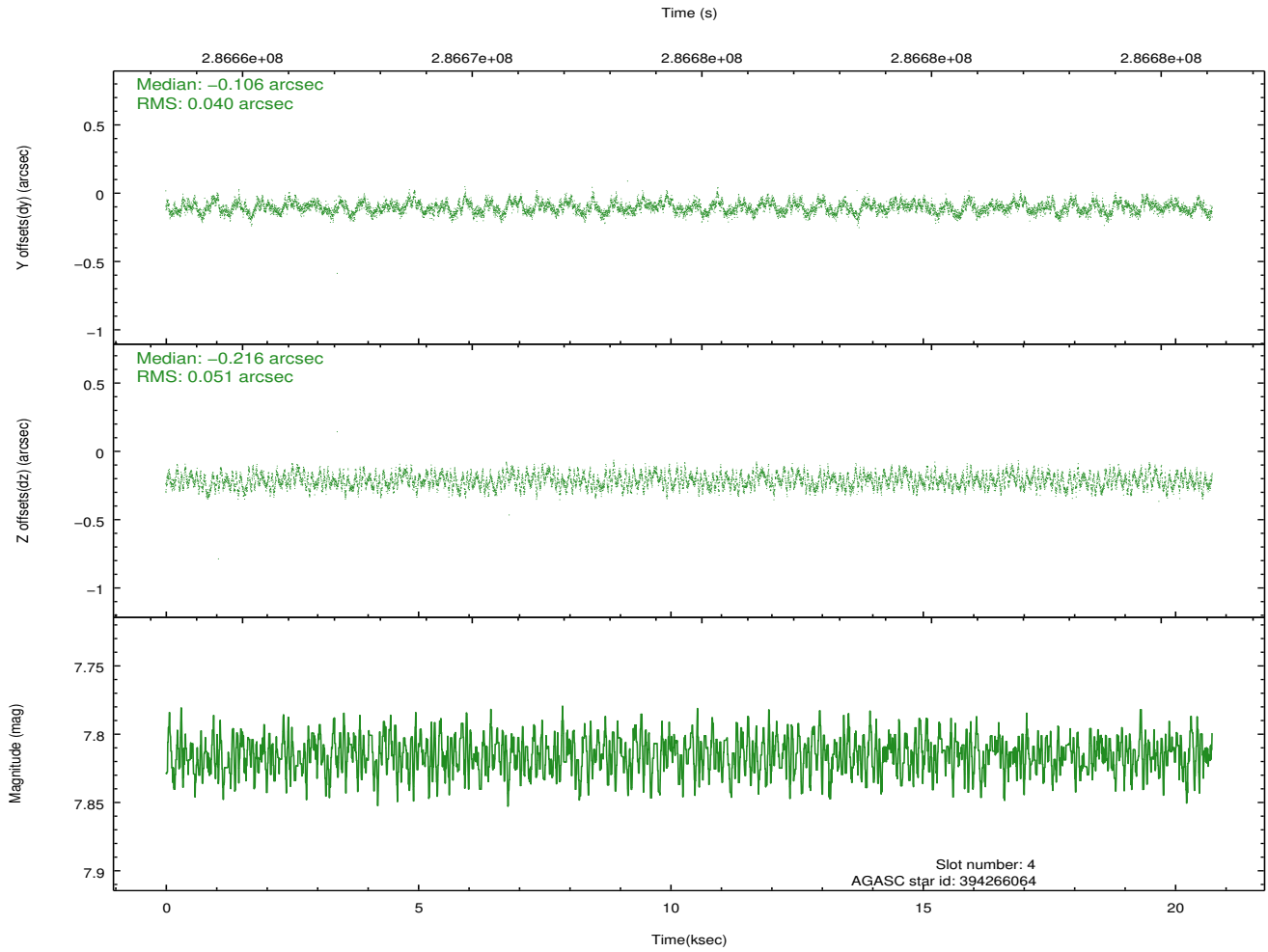
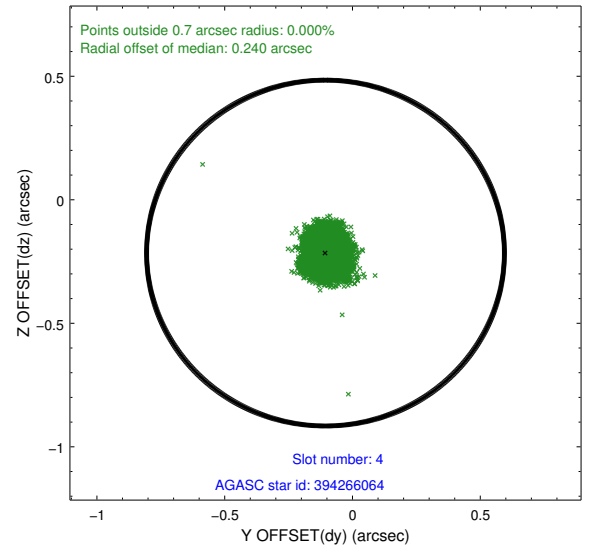
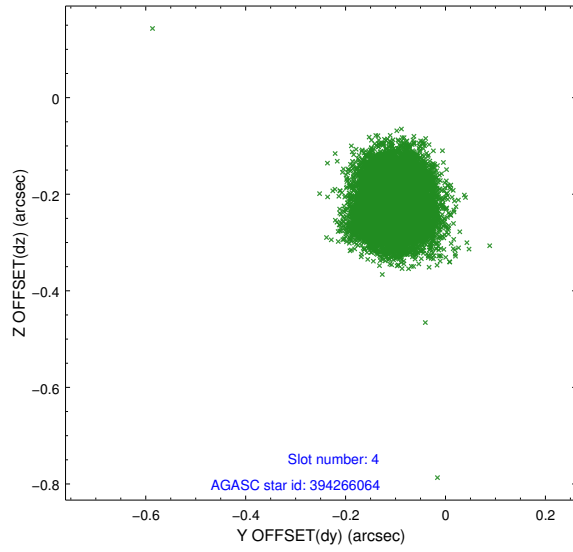
slot	status	id	mag	n_pts	med_dy	med_dz	dr1	dr2	ra	dec	mean_y	mean_z
0	FID	ACIS-S-2	7.10	5056	-0.098	-0.064	0.007	0.011	0.000000	0.000000	-767.93	-1735.72
1	FID	ACIS-S-4	7.20	5057	0.232	0.065	0.006	0.011	0.000000	0.000000	2145.60	172.71
2	FID	ACIS-S-5	7.23	5056	-0.165	0.008	0.007	0.012	0.000000	0.000000	-1820.61	166.53
3	GUIDE	394265368	8.28	10108	0.067	0.010	0.076	0.121	157.894980	43.264742	-266.31	-797.85
4	GUIDE	394266064	7.81	10111	-0.106	-0.216	0.070	0.106	156.996152	42.981293	680.14	1593.91
5	GUIDE	394266088	9.27	10092	0.012	0.021	0.080	0.132	157.818346	43.220280	-238.95	-542.24
6	GUIDE	394270280	9.88	10094	-0.015	0.105	0.119	0.191	158.138611	43.075133	-1201.77	-774.44
7	GUIDE	394264872	9.85	10098	0.044	0.081	0.135	0.220	157.418154	43.339813	805.35	-101.32

2.4 Star Slots

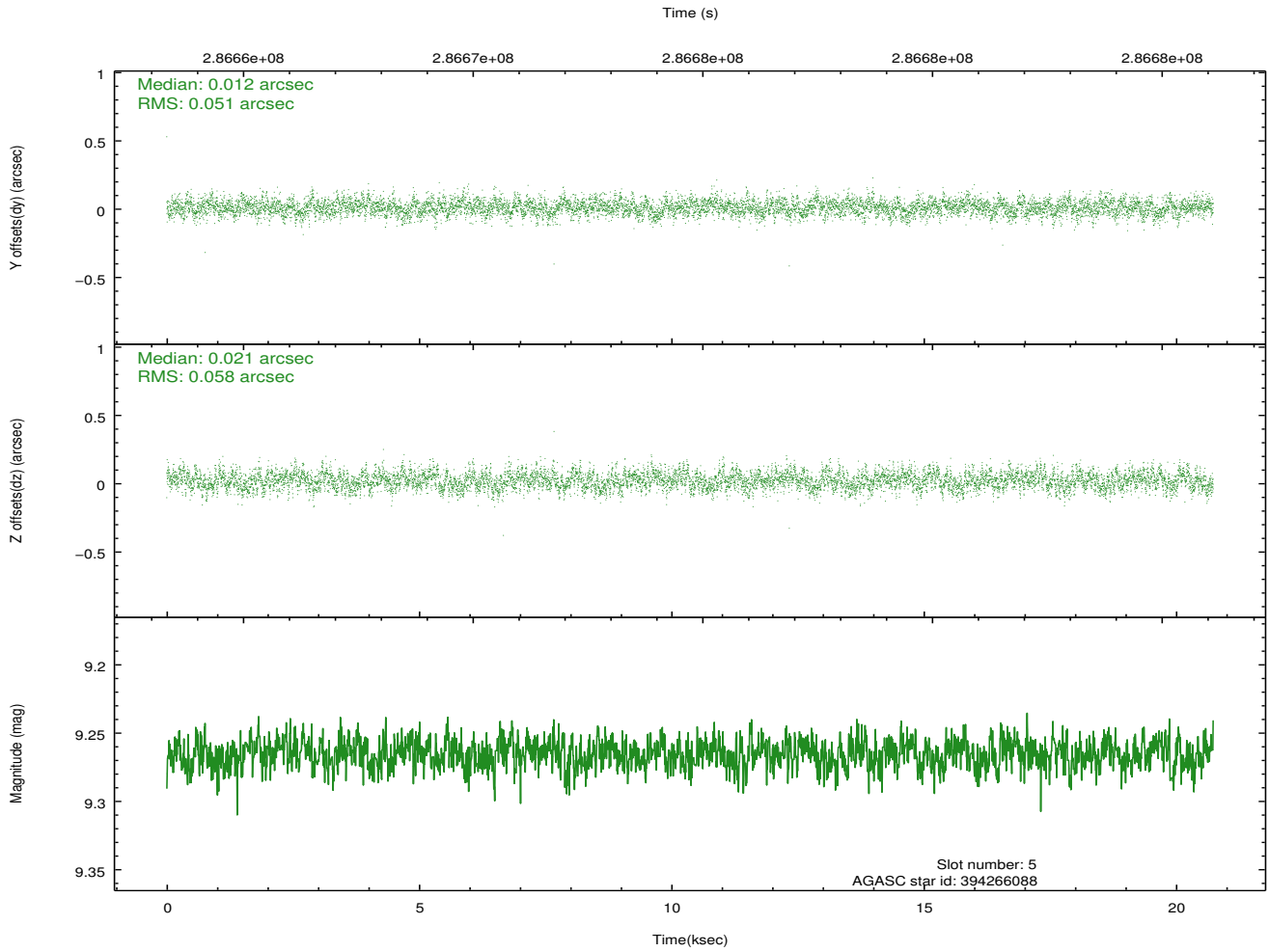
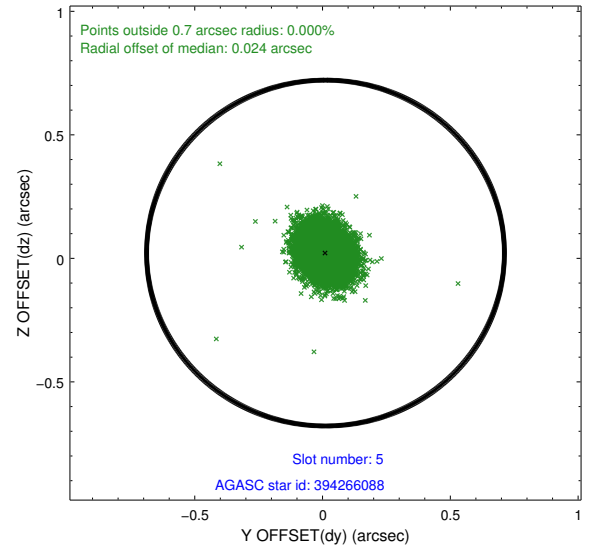
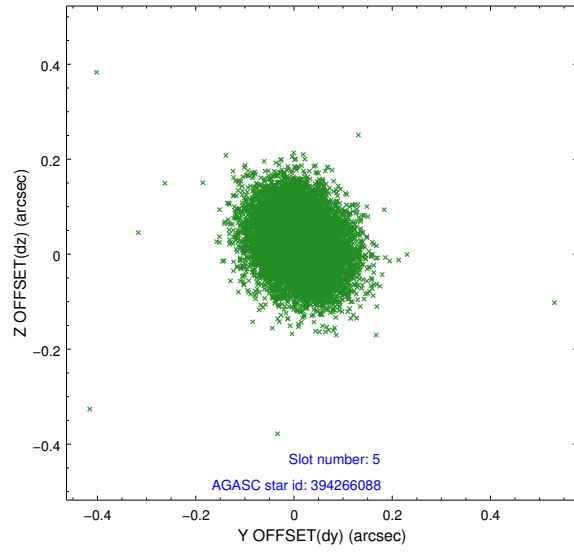
2.4.1 Slot 3



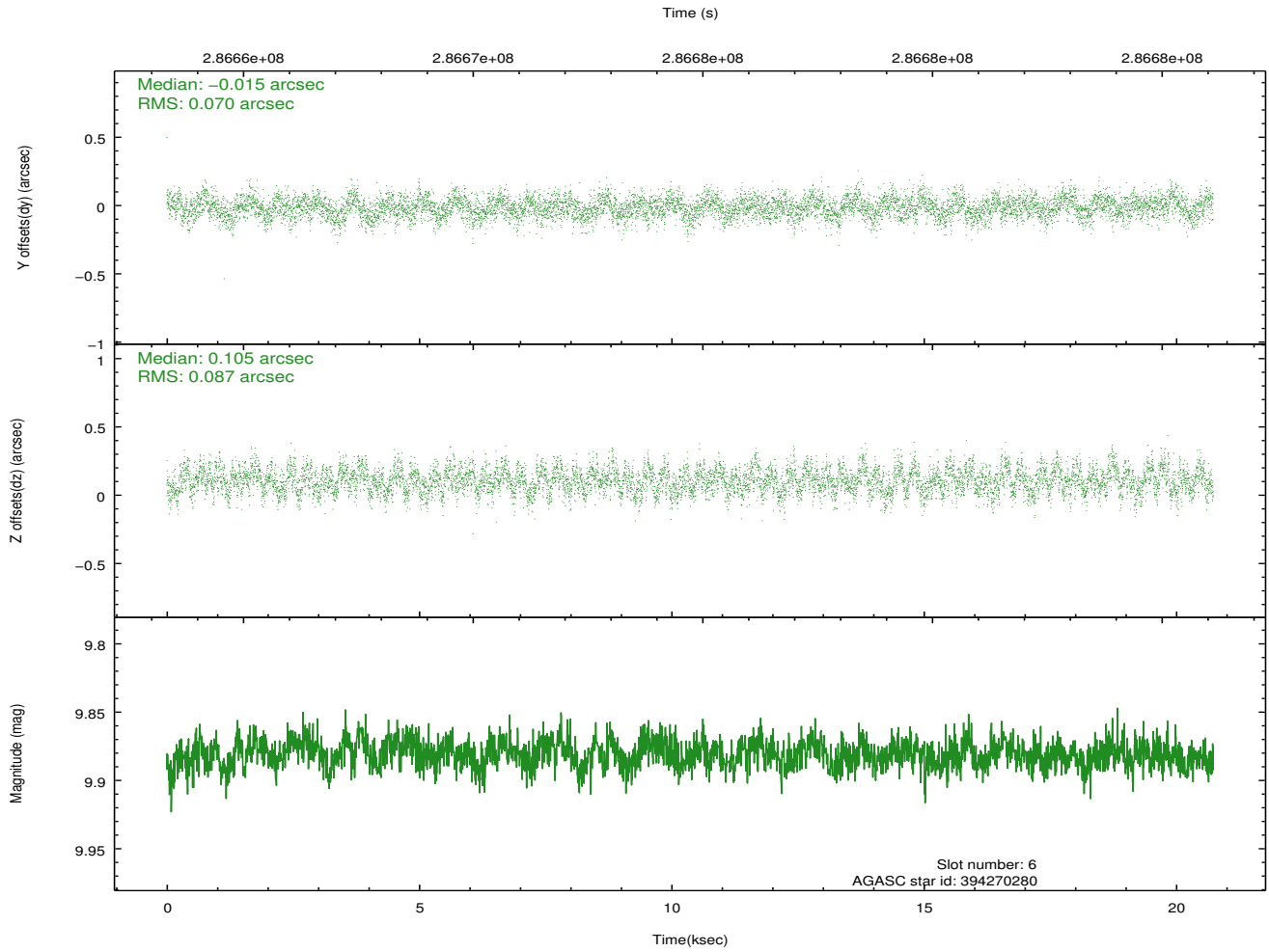
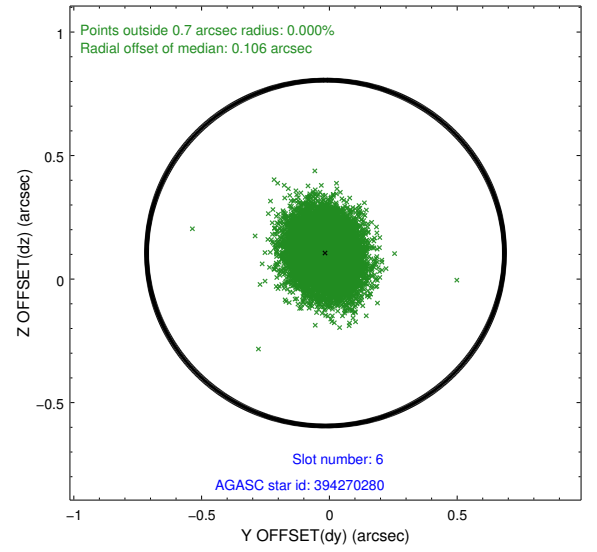
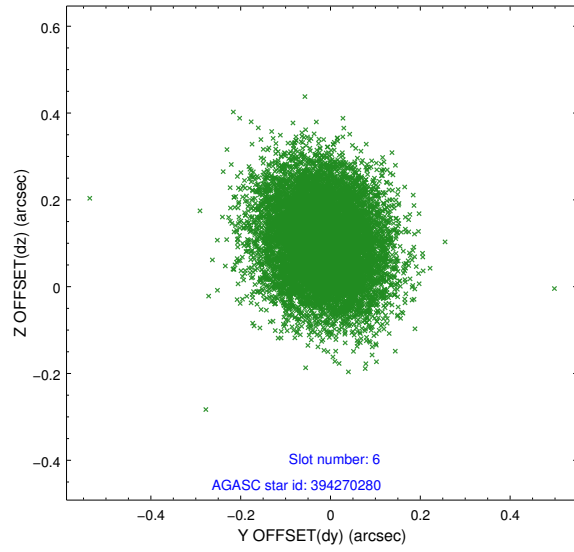
2.4.2 Slot 4



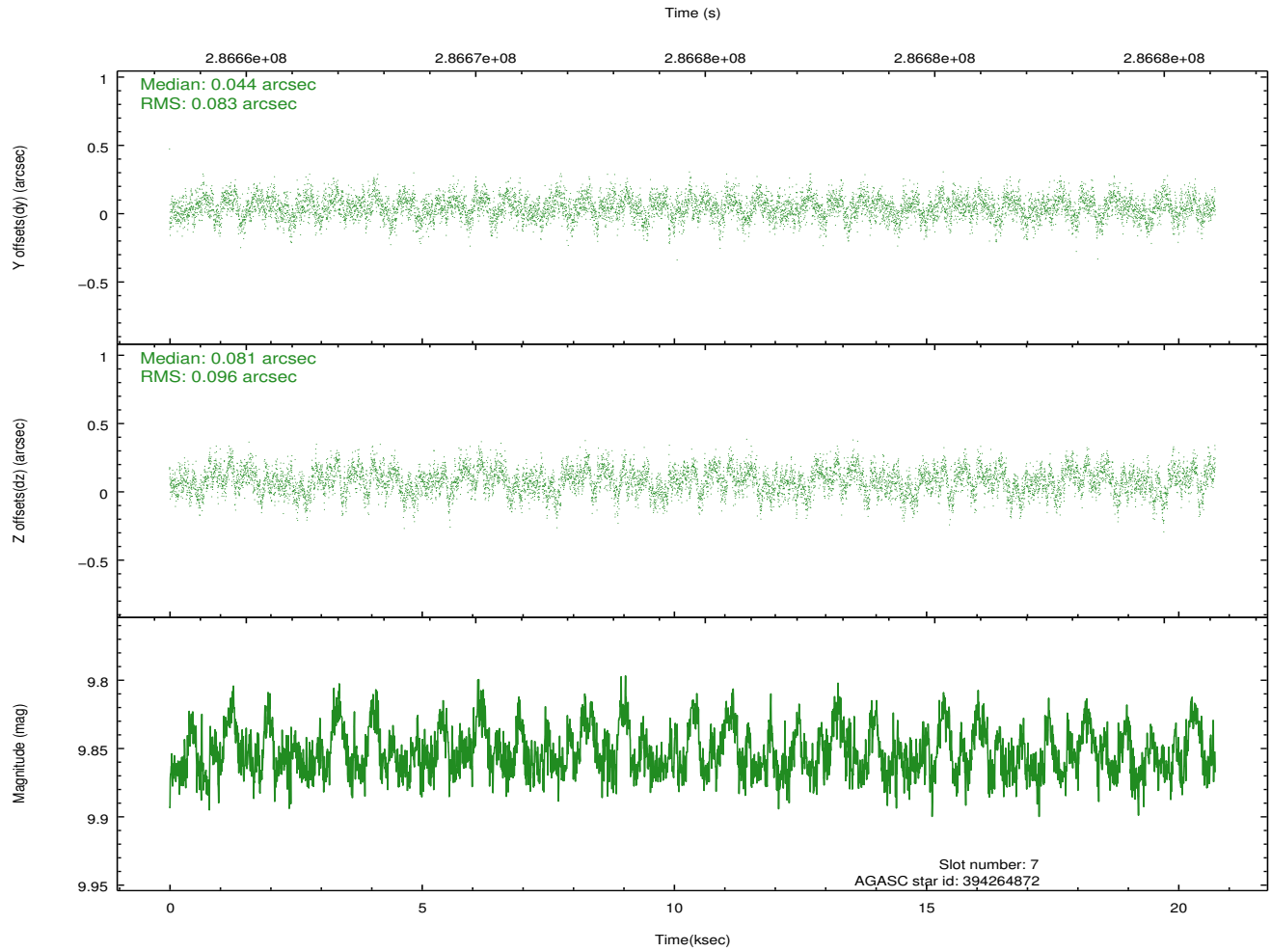
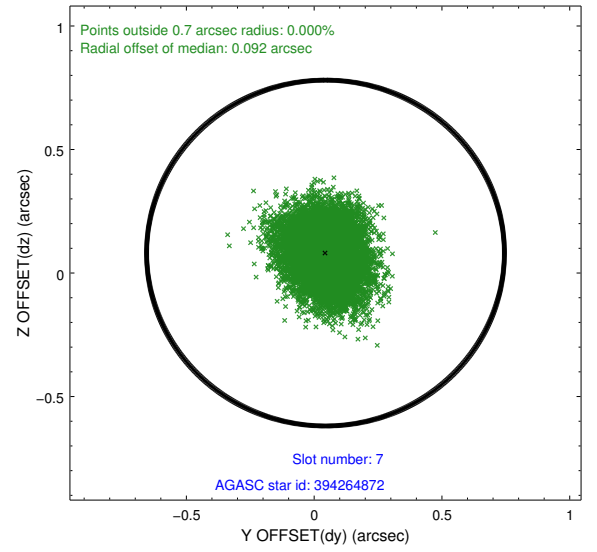
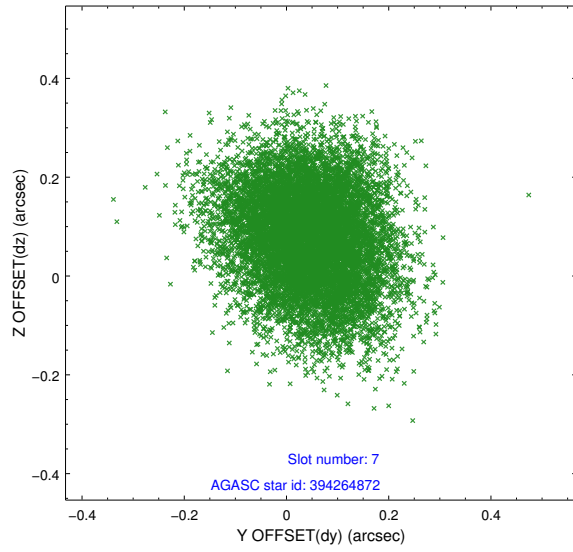
2.4.3 Slot 5



2.4.4 Slot 6

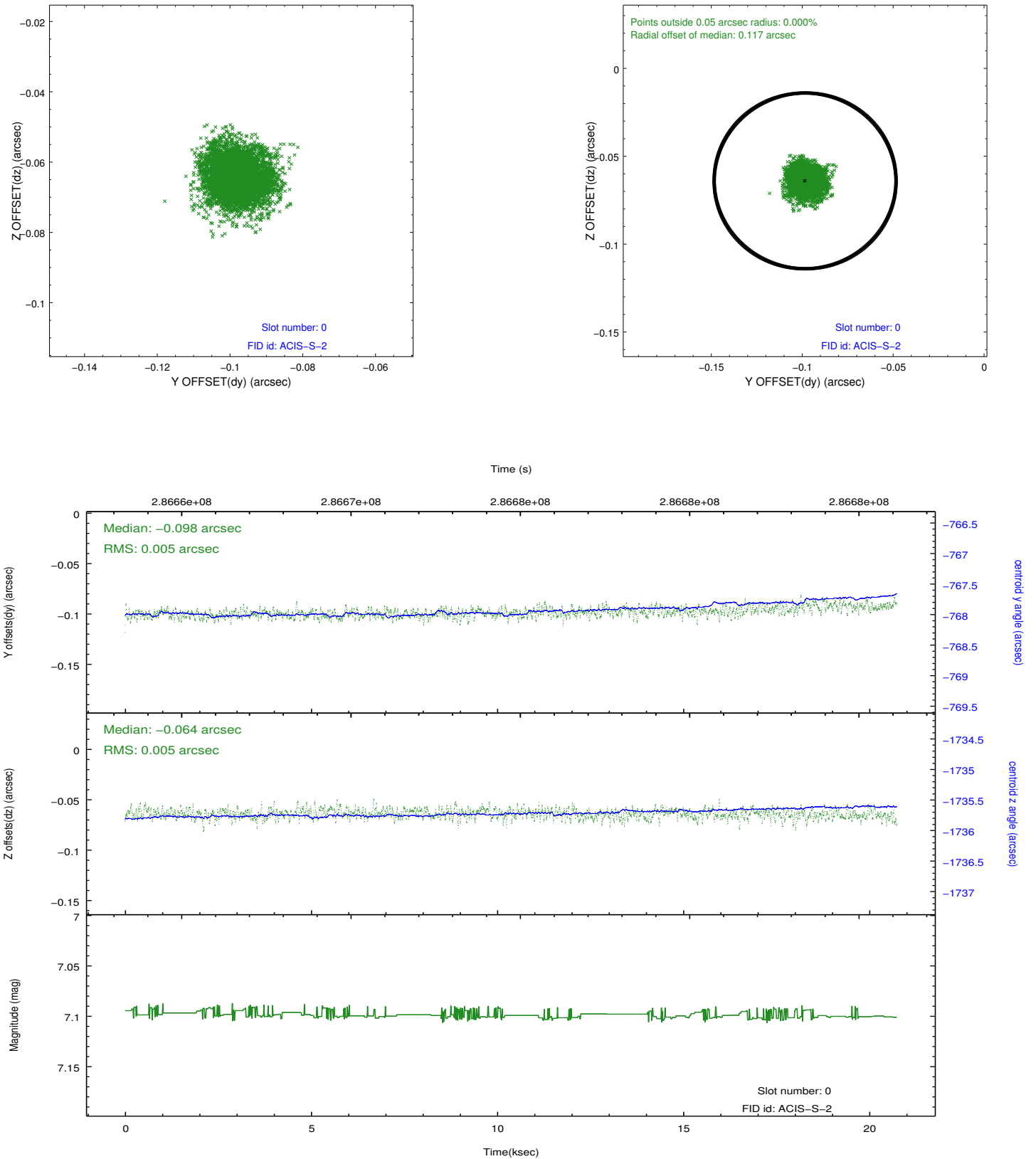


2.4.5 Slot 7

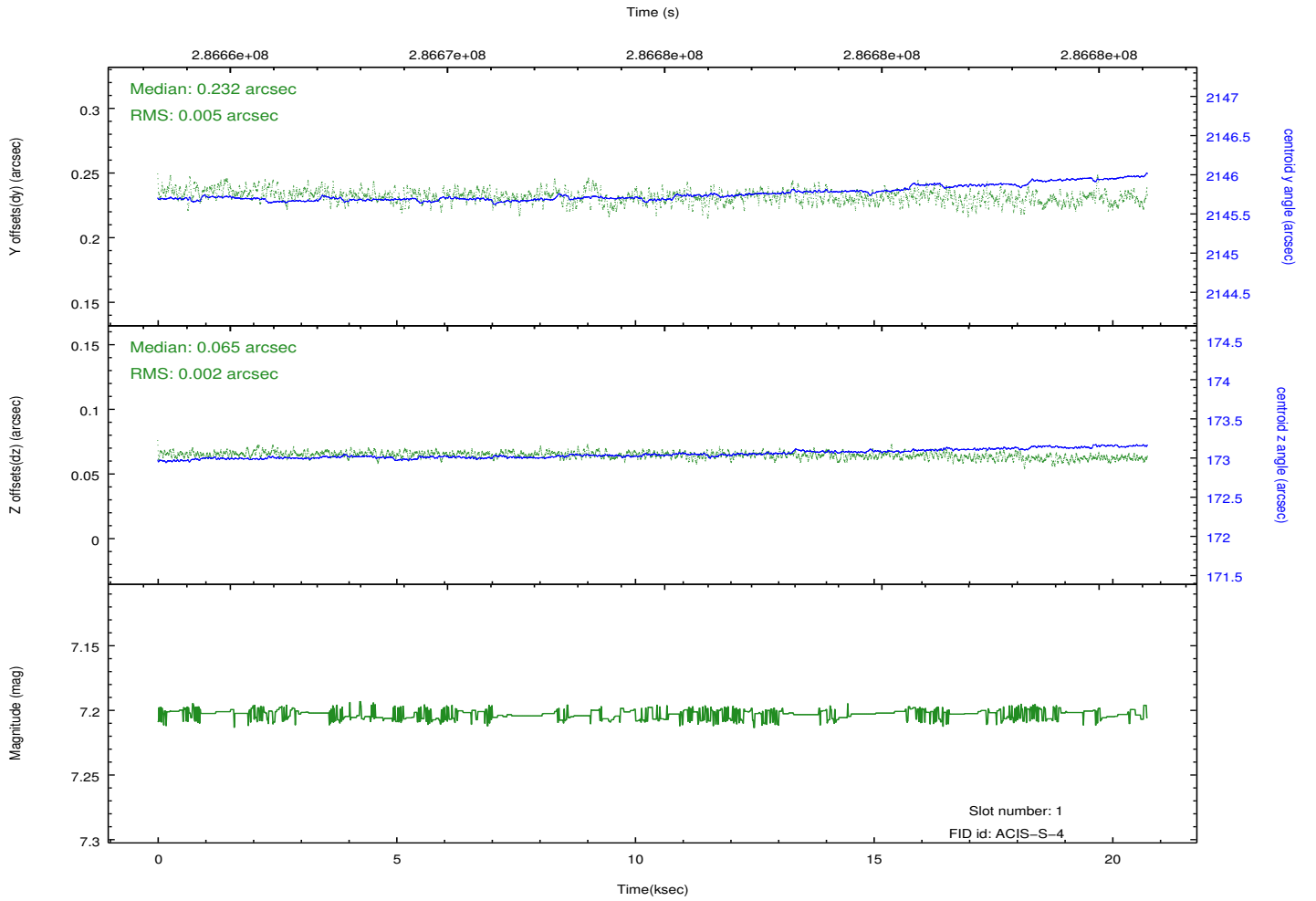
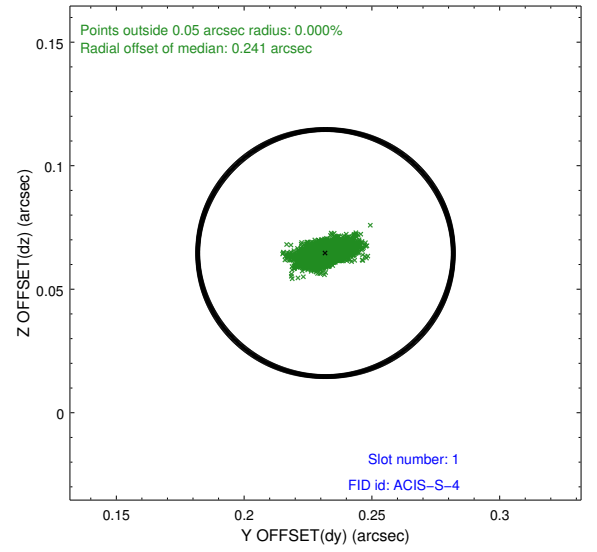
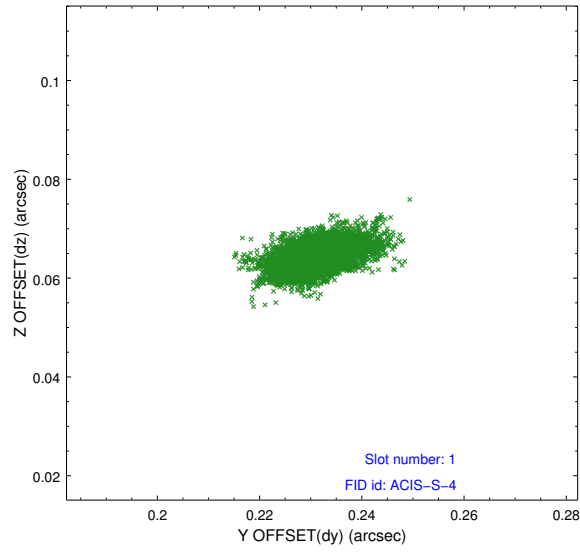


2.5 FID Slots

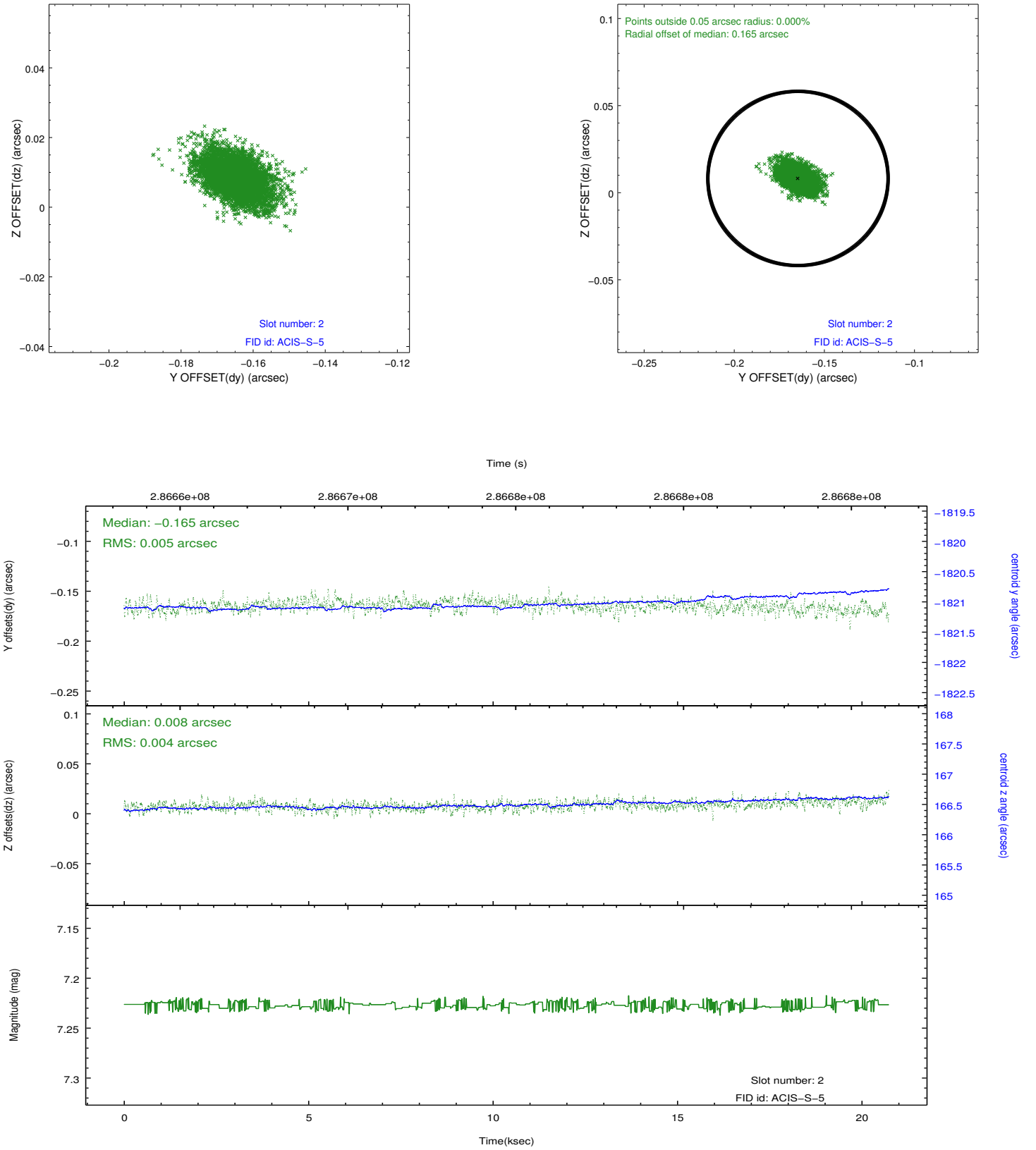
2.5.1 Slot 0



2.5.2 Slot 1



2.5.3 Slot 2



A Summary

A.1 Status

V&V Scientist	Jen Lauer
V&V Date (YYYY-MM-DD)	2012.07.05
V&V Edition	1
V&V Disposition and Status	OK
V&V Charge Time	20.0321591

A.2 Comments