

V&V Reference Report

L2 ASCDS Version : 8.4.4

Observation 7898 - L2 Version 3
Chandra X-Ray Center

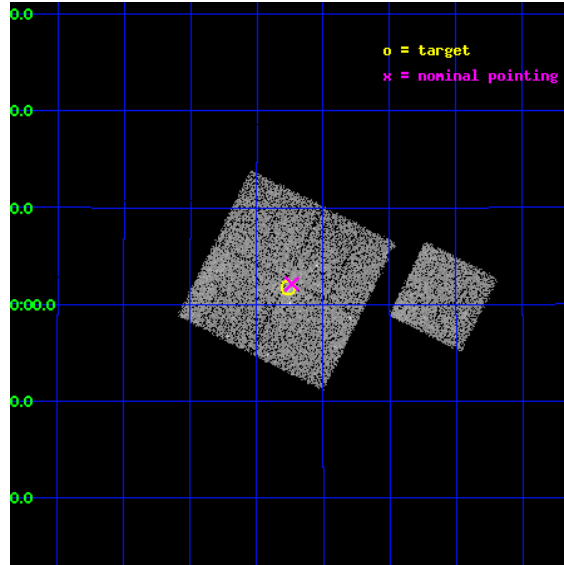
L2 Processing Date : Apr 21 2012

Contents

1	Front	2
2	OBI	3
2.1	OBI	3
2.1.1	Images	3
2.1.2	Bias	3
2.1.3	Parameters	4
2.1.4	Events	4
2.2	Compared Parameters	5
2.3	Aspect	6
2.4	Star Slots	9
2.4.1	Slot 3	9
2.4.2	Slot 4	10
2.4.3	Slot 5	11
2.4.4	Slot 6	12
2.4.5	Slot 7	13
2.5	FID Slots	14
2.5.1	Slot 0	14
2.5.2	Slot 1	15
2.5.3	Slot 2	16
A	Summary	17
A.1	Status	17
A.2	Comments	17

1 Front

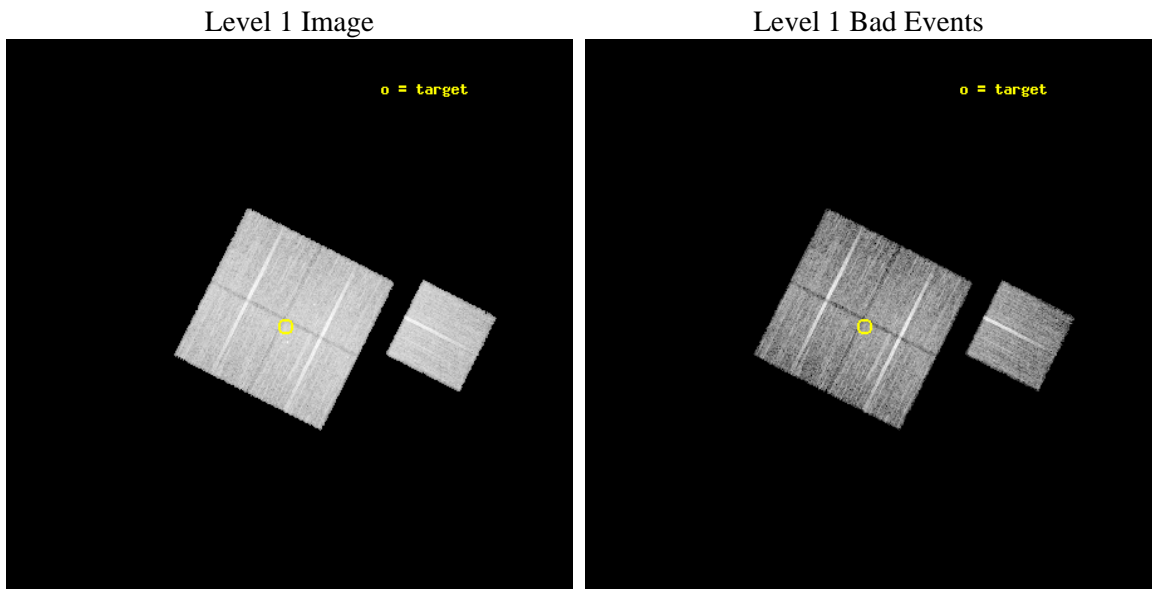
seq_num	800616	Sequence number
obs_id	7898	Observation id
title	An X-ray/lensing calibration of cluster mass estimates	Proposal ti
observer	Dr. Stephen Murray	Principal investigator
object	Z5768	Source name
dtcycle	0	
cycle	P	events from which exps? Prim/Second/Both
ra_targ	197.94	Observer's specified target RA [deg]
dec_targ	22.03	Observer's specified target Dec [deg]
ra_nom	197.9339395992	Nominal RA [deg]
dec_nom	22.035803525057	Nominal Dec [deg]
roll_nom	116.76011647884	Nominal Roll [deg]
revision	3	Processing version of data
ontime	11076.300085187	Sum of GTIs [s]
livetime	10931.58007032	Livetime [s]
ontime0	11073.15909481	Sum of GTIs [s]
ontime1	11076.300085187	Sum of GTIs [s]
ontime2	11076.300085187	Sum of GTIs [s]
ontime3	11076.300085187	Sum of GTIs [s]
ontime6	11076.300085187	Sum of GTIs [s]
l2events	37402	Number of level 2 events



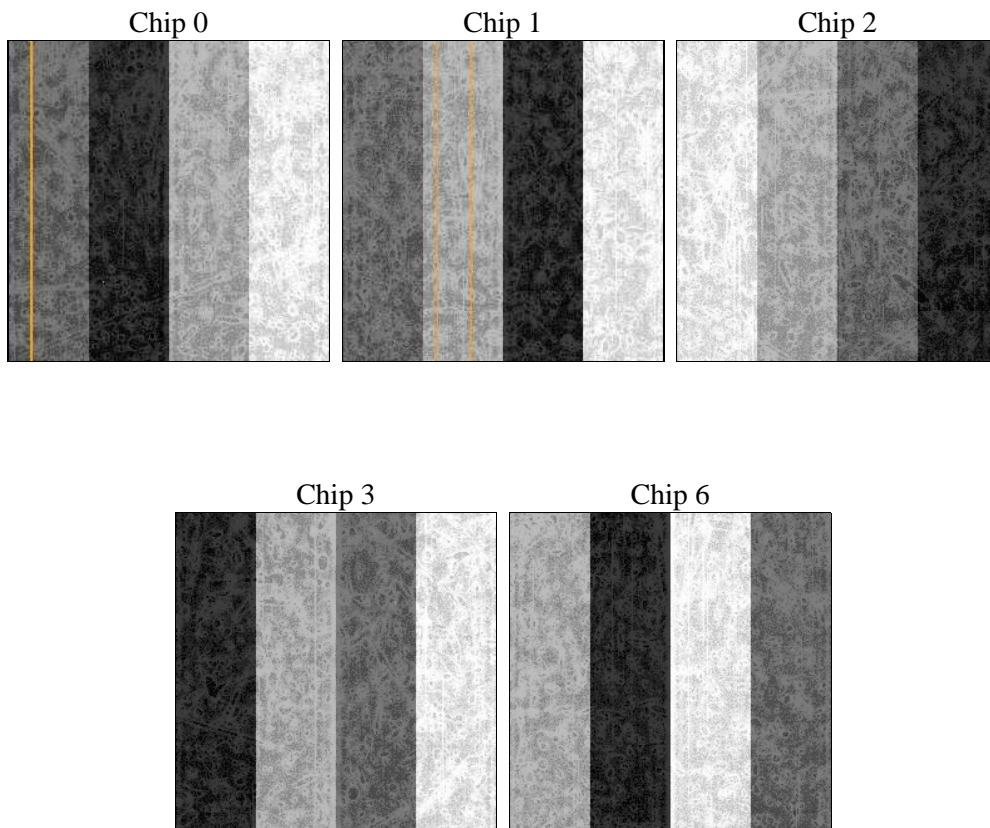
2 OBI

2.1 OBI

2.1.1 Images



2.1.2 Bias



2.1.3 Parameters

obi_num	0	Obi number	sched_exp_time	10900.000000	[s] Scheduled observation exposure time
ascdsver	8.4.4	Processing system revision	ontime	11076.300085187	Sum of GTIs [s]
caldbver	4.4.9	 	ontime0	11073.15909481	Sum of GTIs [s]
date	2012-04-21T01:56:05	Date and time of file creation	ontime1	11076.300085187	Sum of GTIs [s]
revision	3	Processing version of data	ontime2	11076.300085187	Sum of GTIs [s]
			ontime3	11076.300085187	Sum of GTIs [s]
			ontime6	11076.300085187	Sum of GTIs [s]
			l1events	466704	Number of level 1 events

2.1.4 Events

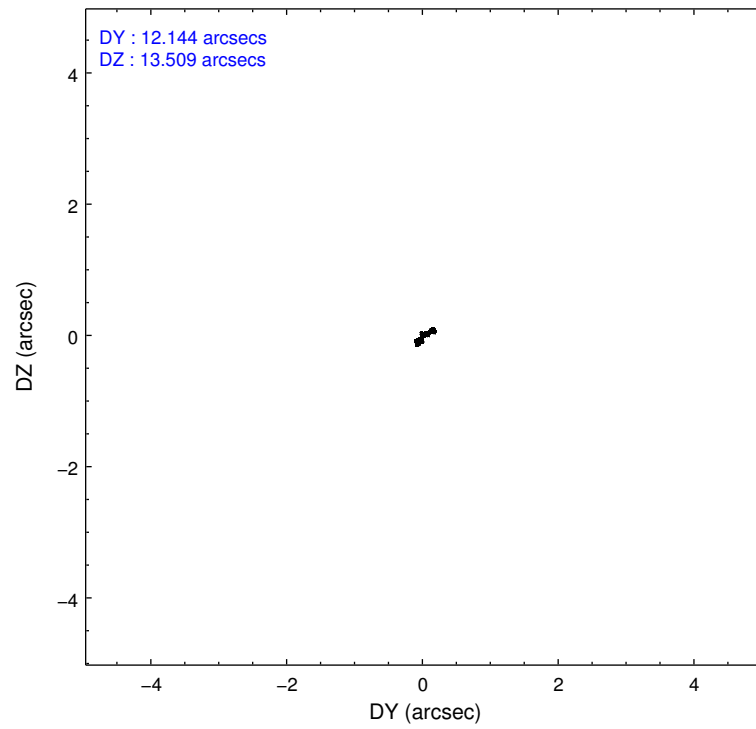
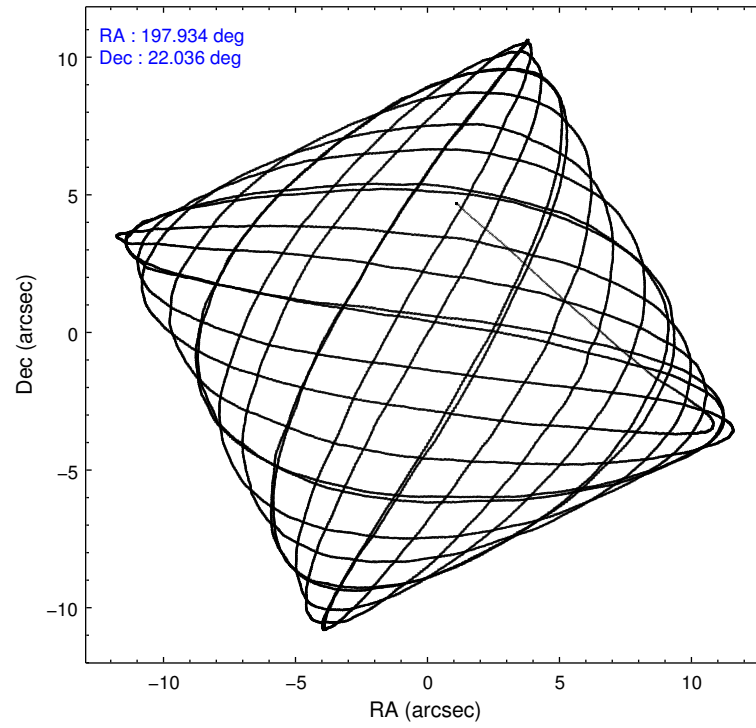
	ccd 0	ccd 1	ccd 2	ccd 3	ccd 6
level 1 events	88030	89530	98256	97330	93558
rejected events	79431	79824	89627	88418	84688
rejected %	90%	89%	91%	90%	90%

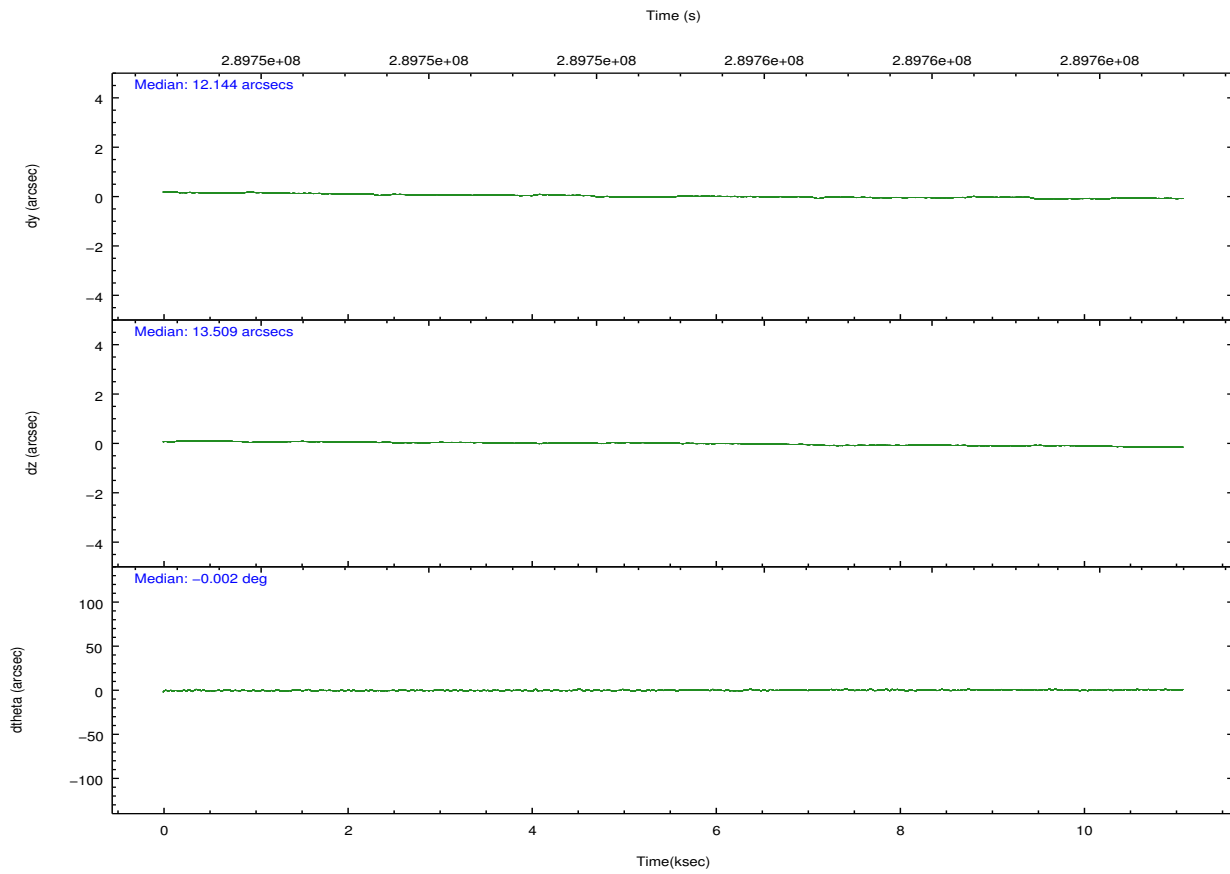
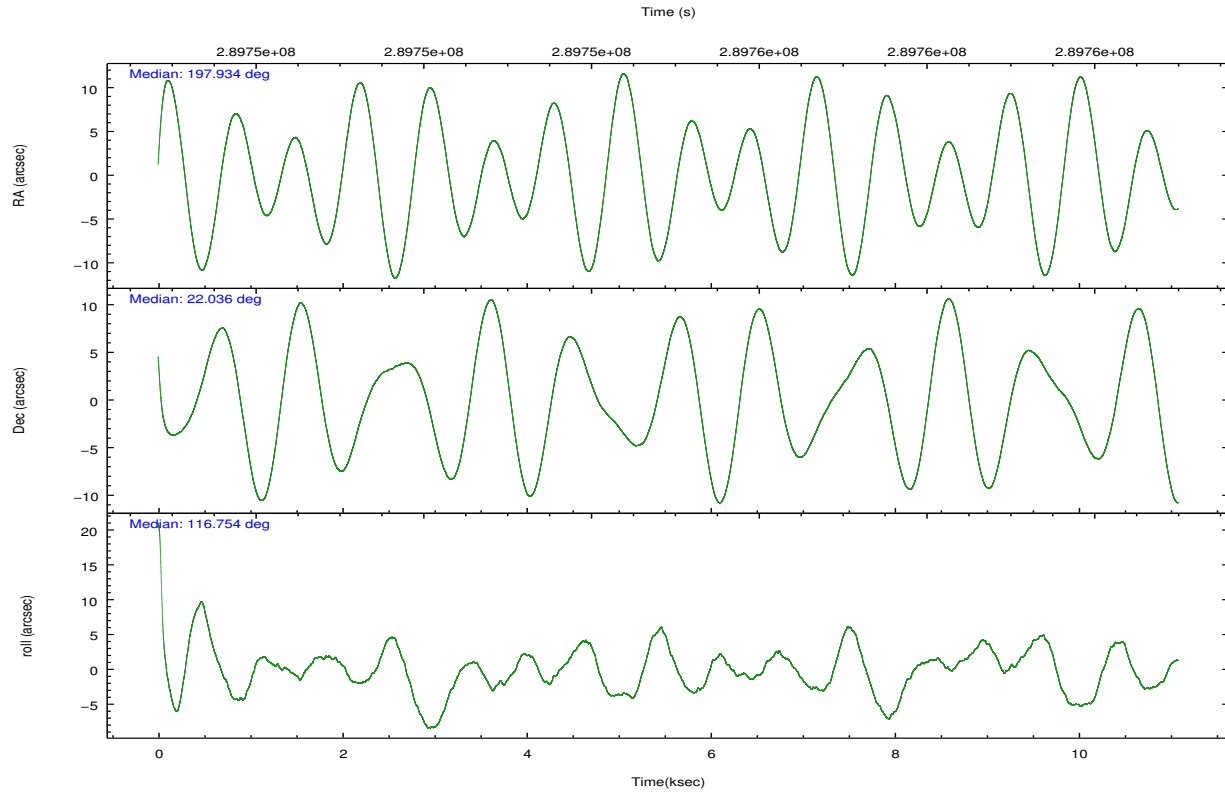
	ccd 0	ccd 1	ccd 2	ccd 3	ccd 6
grade 0 events	3283	3937	3516	3717	3533
	3%	4%	3%	3%	3%
grade 1 events	35	47	55	61	42
	0%	0%	0%	0%	0%
grade 2 events	2282	2391	2226	2066	2116
	2%	2%	2%	2%	2%
grade 3 events	1071	1169	992	1055	1088
	1%	1%	1%	1%	1%
grade 4 events	993	1071	1021	1040	1025
	1%	1%	1%	1%	1%
grade 5 events	3292	3649	3233	3830	3677
	3%	4%	3%	3%	3%
grade 6 events	1851	2124	1677	1873	2034
	2%	2%	1%	1%	2%
grade 7 events	75223	75142	85536	83688	80043
	85%	83%	87%	85%	85%

2.2 Compared Parameters

Parameter	Planned	Actual	Parameter	Planned	Actual
Instrument	ACIS	ACIS	Obspar format version number	7	7
Detector	ACIS-01236	ACIS-01236	Obspar file type	PREDICTED	ACTUAL
Grating	NONE	NONE	Obspar update status	NONE	UPDATED
Data mode	VFAINT	VFAINT	Number of optional ACIS chips dropped	0	0
Observation mode	POINTING	POINTING	On-chip summing requested	N	N
[deg] Pointing RA	197.958813	197.9339395991976	Subarray requested	NONE	NONE
[deg] Pointing Dec	22.020821	22.03580352505676	Alternating exposures requested	N	N
[deg] Pointing Roll	116.542075	116.7601164788371	[s] Primary exposure time	0.000000	3.1
[mm] SIM focus pos	-0.782348	-0.7809083437167272			
[mm] SIM defocus	0	0.001439871863259334			
[mm] SIM translation stage pos	-233.592463	-233.5874344608287			
[mm] SIM translation stage offset	0	-0.005018542100998502			
[s] Observation start time (MET)	289749545.184000	289748000.35301			
Observation start date	2007-03-08T13:58:00	2007-03-08T13:33:20			
[s] Observation end time (MET)	289760445.184000	289761116.25363			
Observation end date	2007-03-08T16:59:40	2007-03-08T17:11:56			
Read mode	TIMED	TIMED			

2.3 Aspect



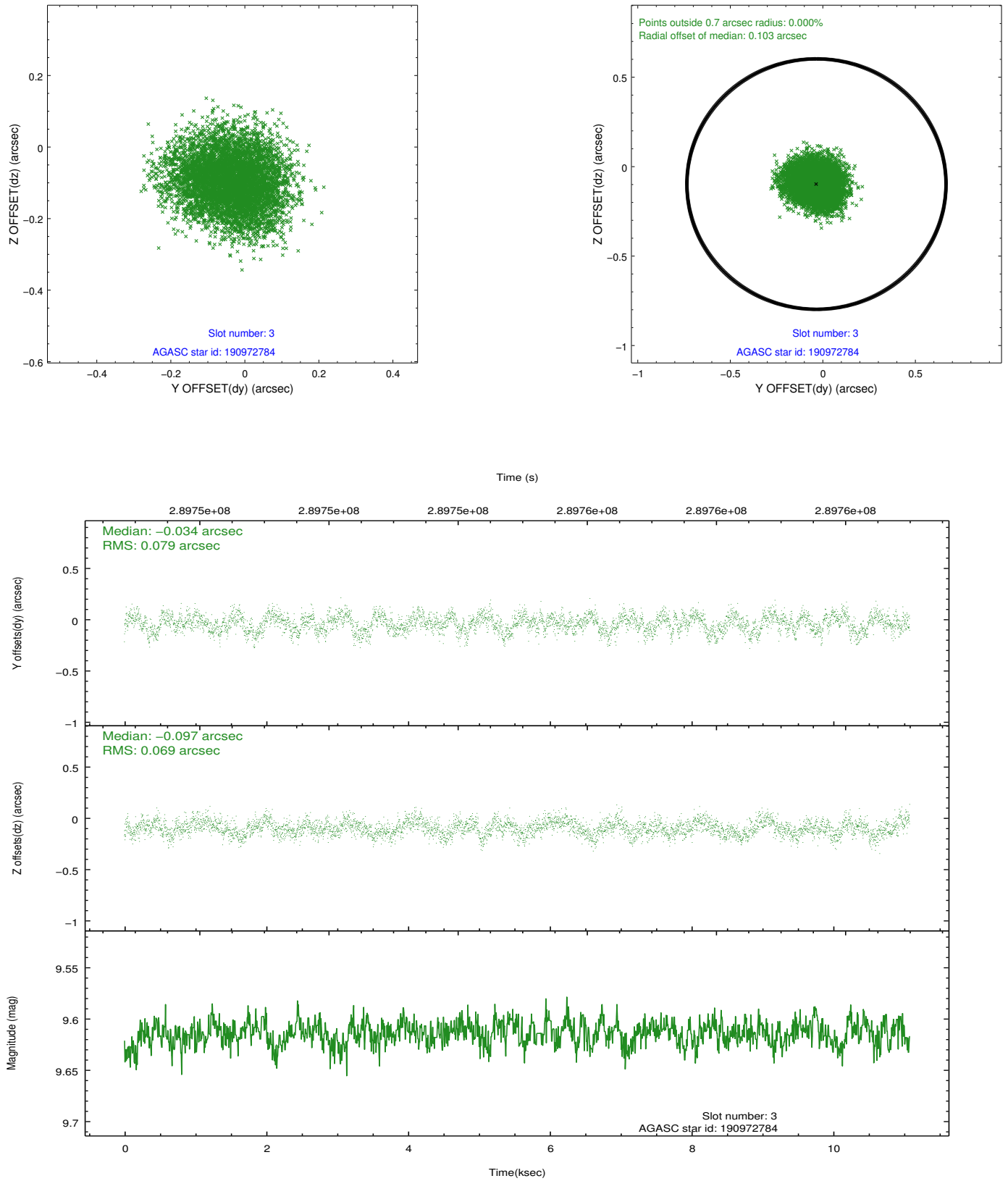


Slot Statistics

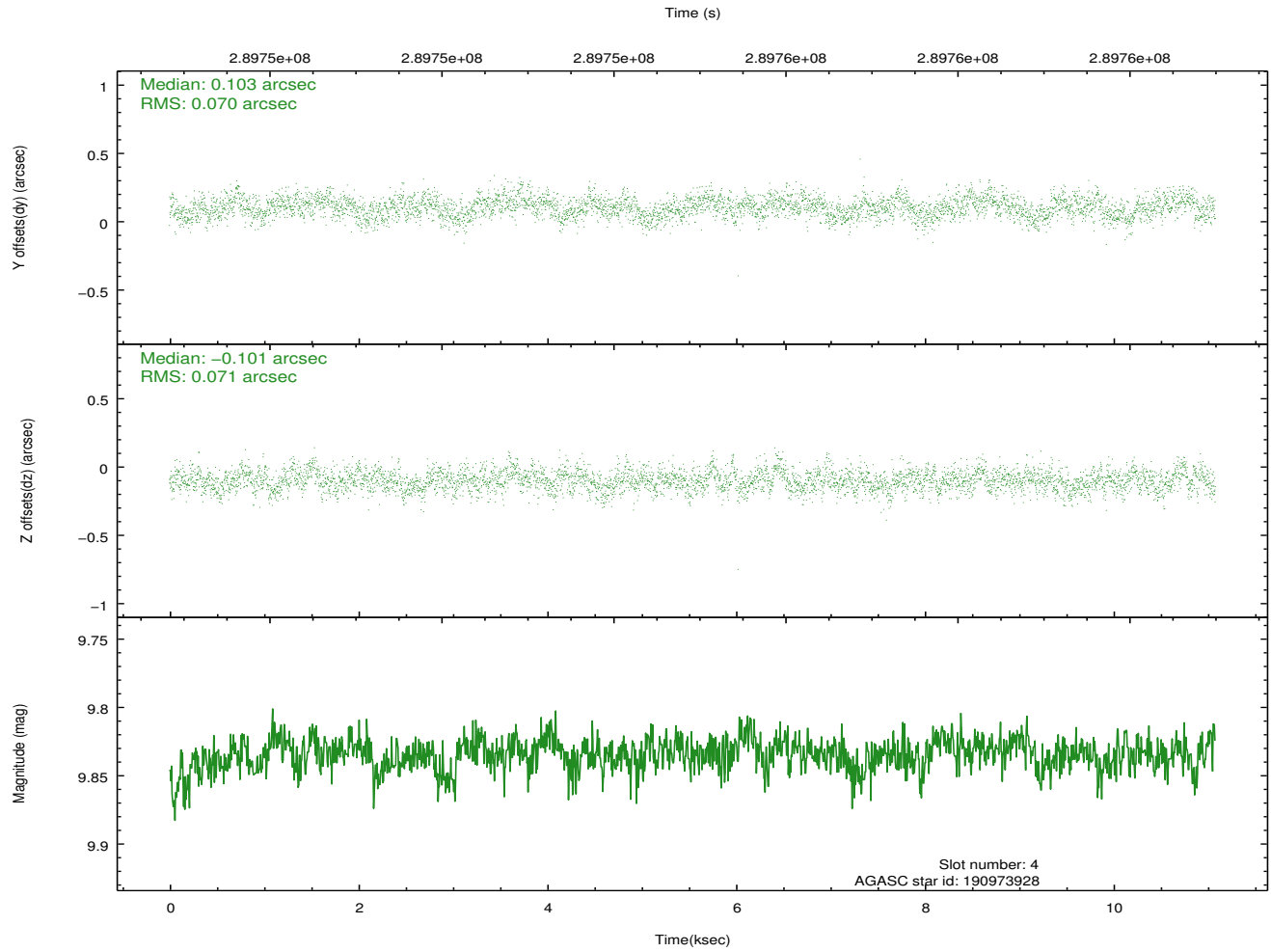
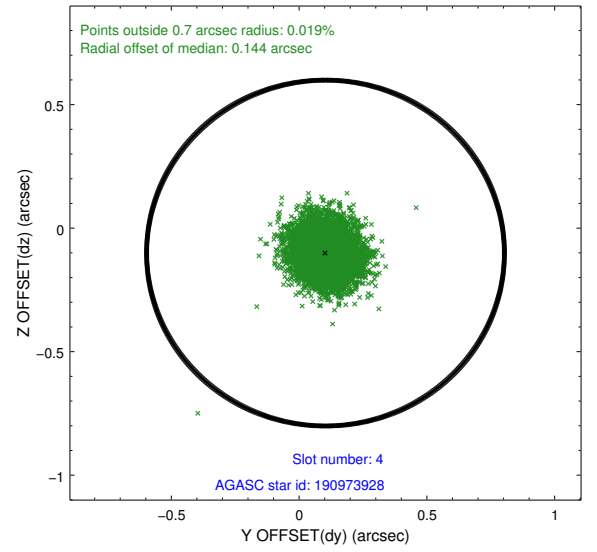
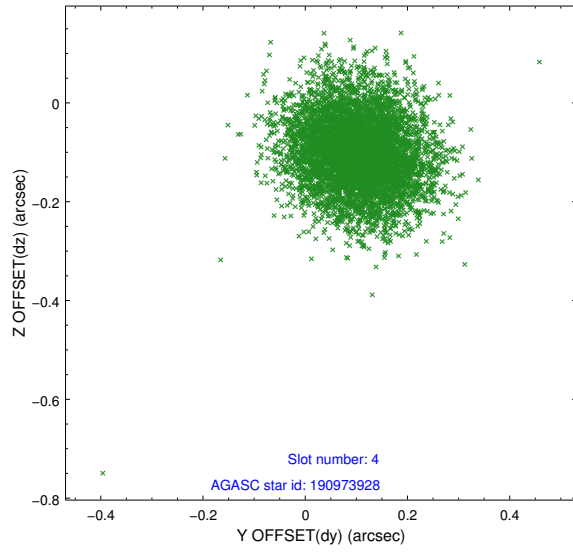
slot	status	id	mag	n_pts	med_dy	med_dz	dr1	dr2	ra	dec	mean_y	mean_z
0	FID	ACIS-I-1	7.23	2703	0.030	0.016	0.006	0.011	0.000000	0.000000	927.40	-837.03
1	FID	ACIS-I-5	7.23	2703	-0.196	0.044	0.007	0.011	0.000000	0.000000	-1820.68	1060.24
2	FID	ACIS-I-6	7.24	2703	0.075	0.010	0.007	0.011	0.000000	0.000000	392.48	1705.24
3	GUIDE	190972784	9.61	5400	-0.034	-0.097	0.114	0.179	197.351360	22.226147	1568.98	1479.04
4	GUIDE	190973928	9.83	5392	0.103	-0.101	0.107	0.171	197.904188	21.564389	-1387.39	898.65
5	GUIDE	190974376	6.79	5406	-0.057	-0.196	0.074	0.122	197.884749	21.918670	-218.65	386.06
6	GUIDE	261373192	9.61	5394	-0.087	0.241	0.112	0.189	198.392023	22.526629	987.44	-2102.51
7	GUIDE	190972120	10.16	5391	0.078	0.156	0.169	0.279	198.831047	21.906574	-1661.63	-2426.32

2.4 Star Slots

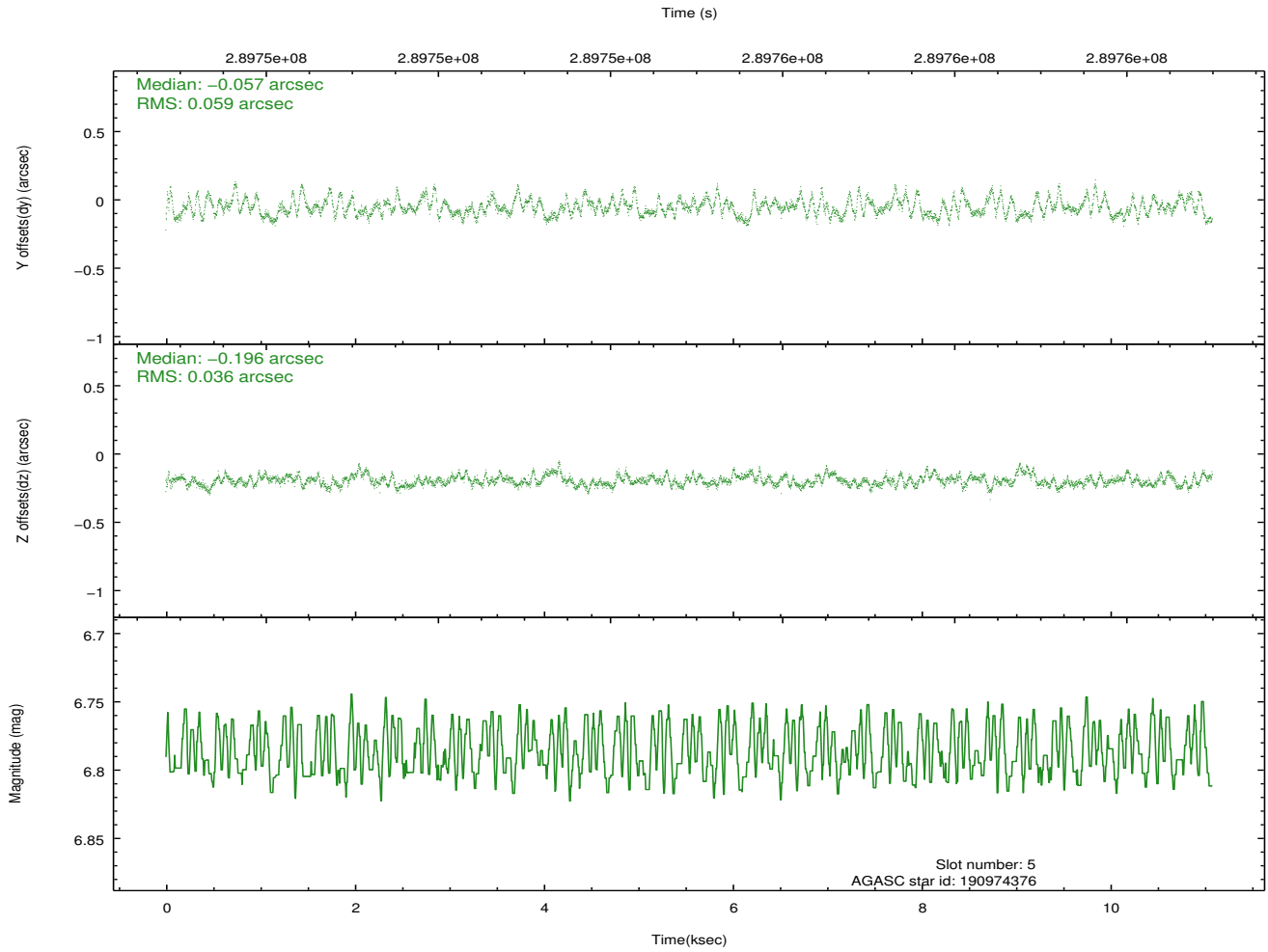
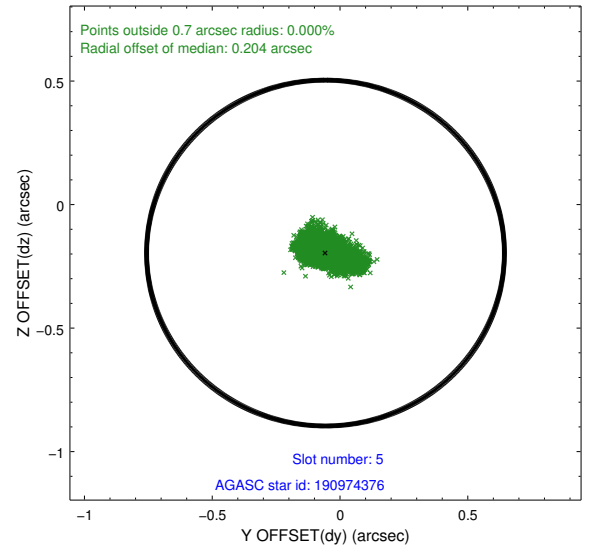
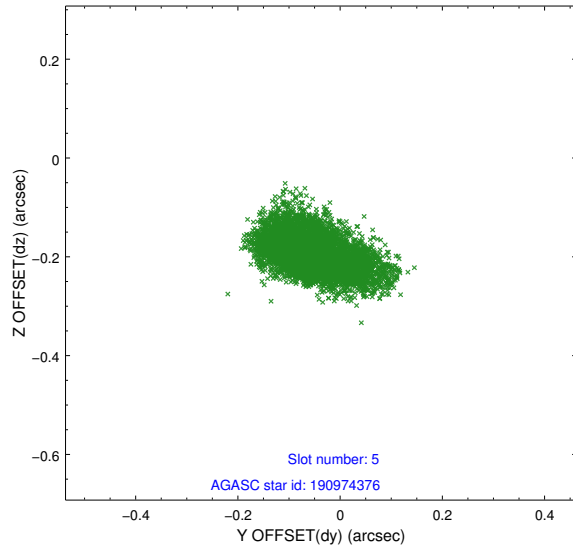
2.4.1 Slot 3



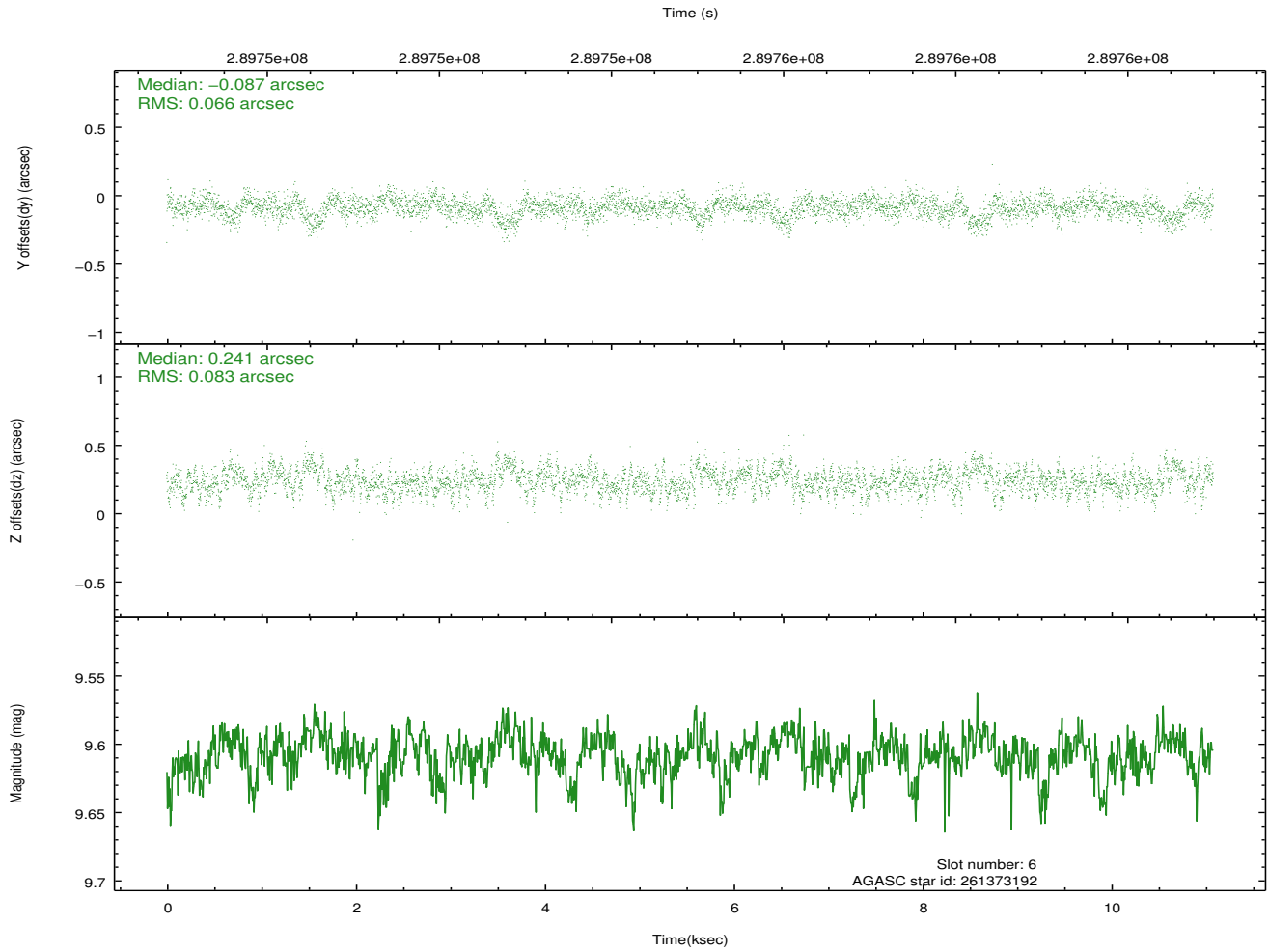
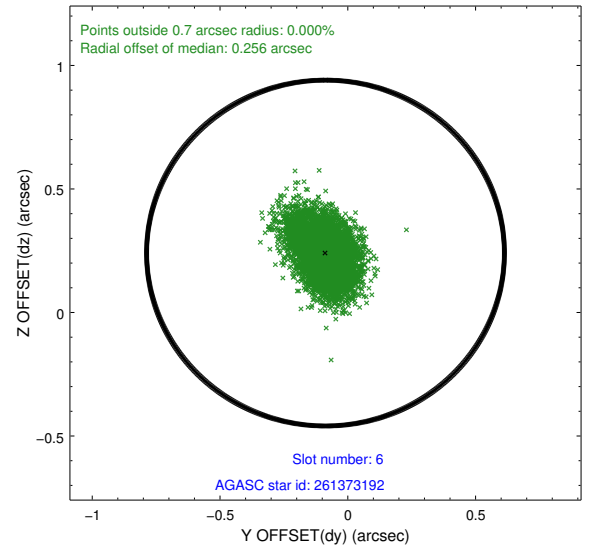
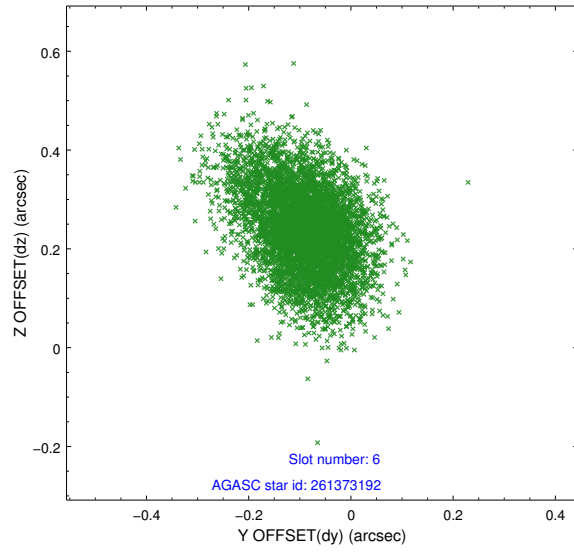
2.4.2 Slot 4



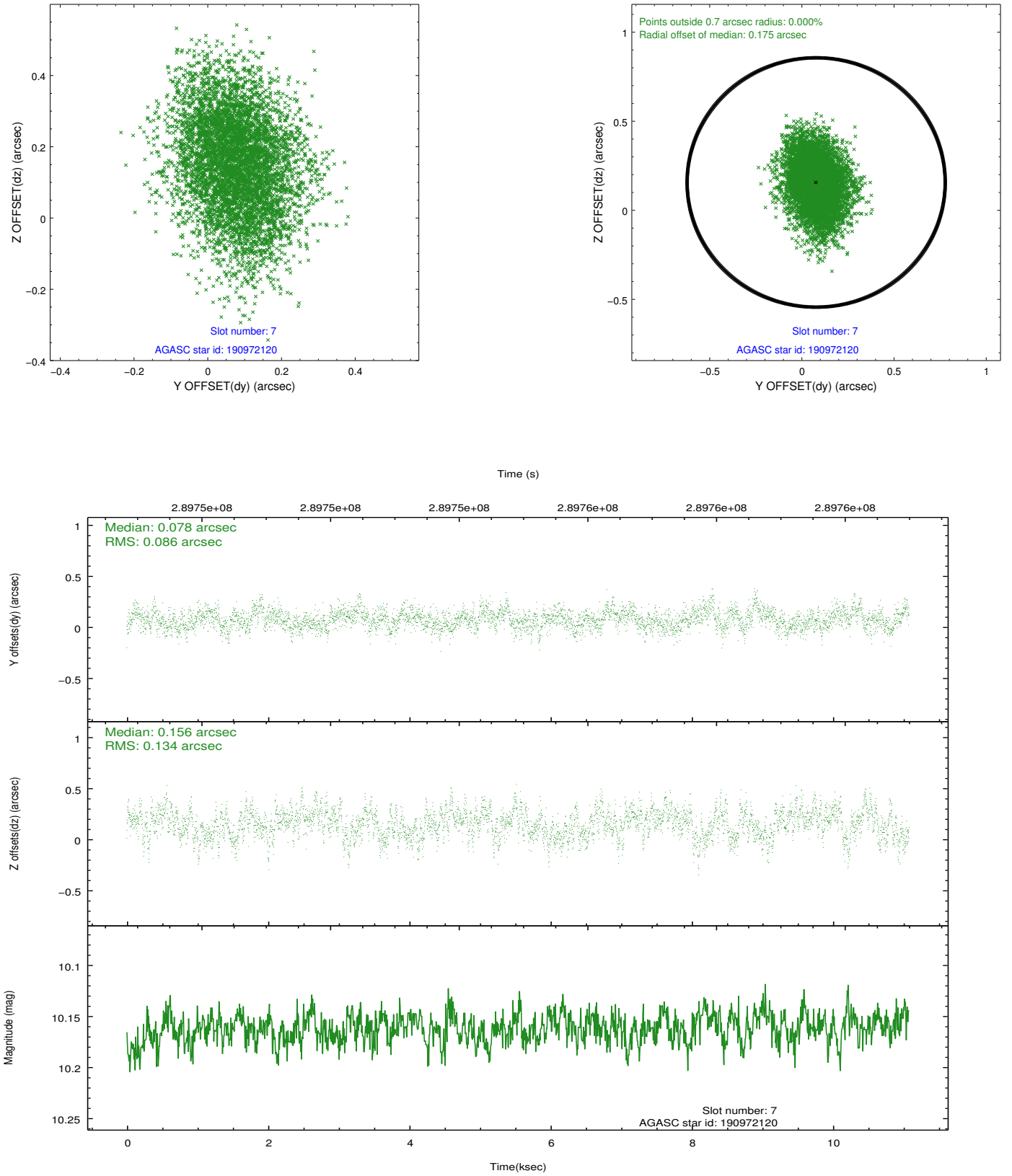
2.4.3 Slot 5



2.4.4 Slot 6

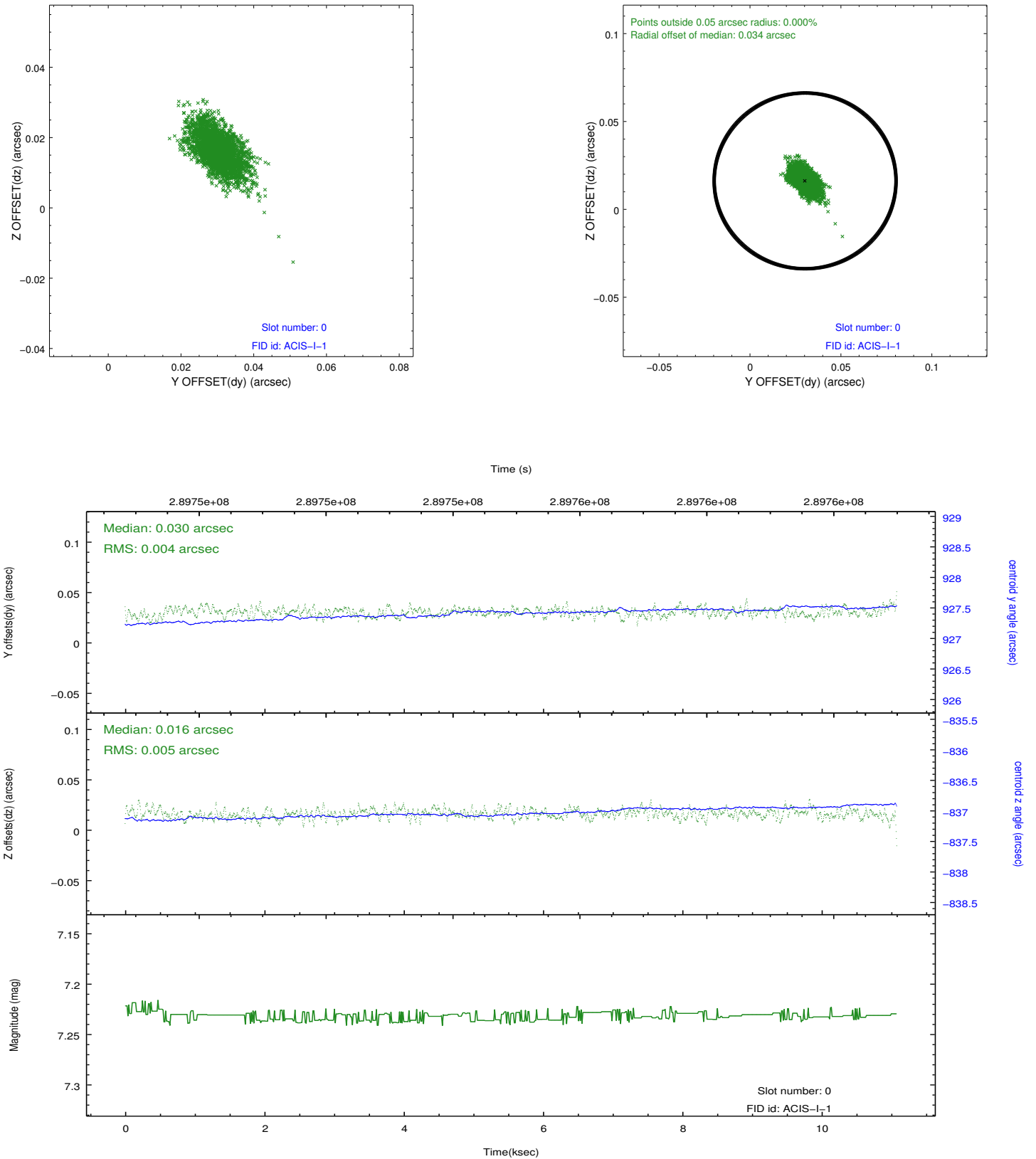


2.4.5 Slot 7

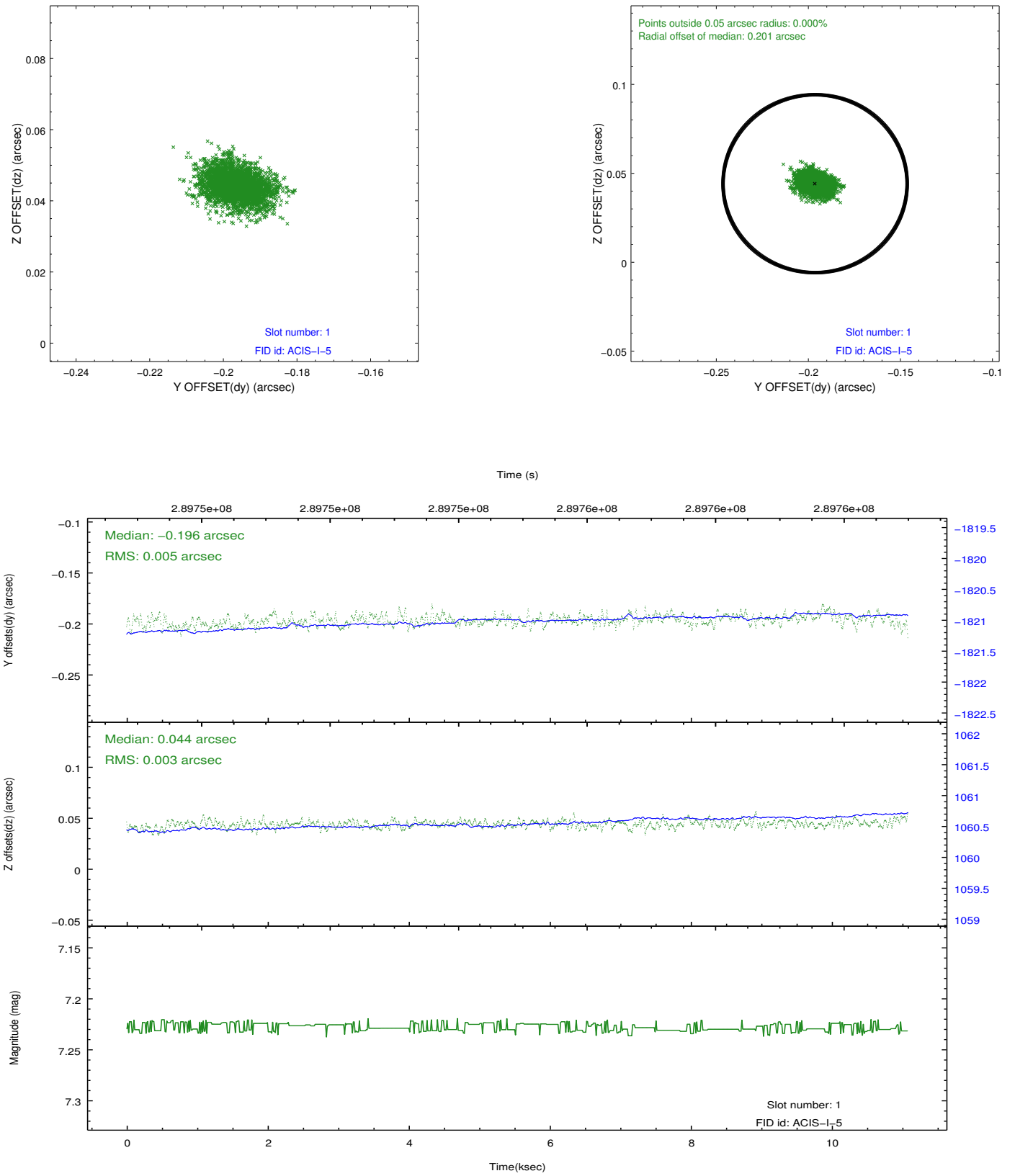


2.5 FID Slots

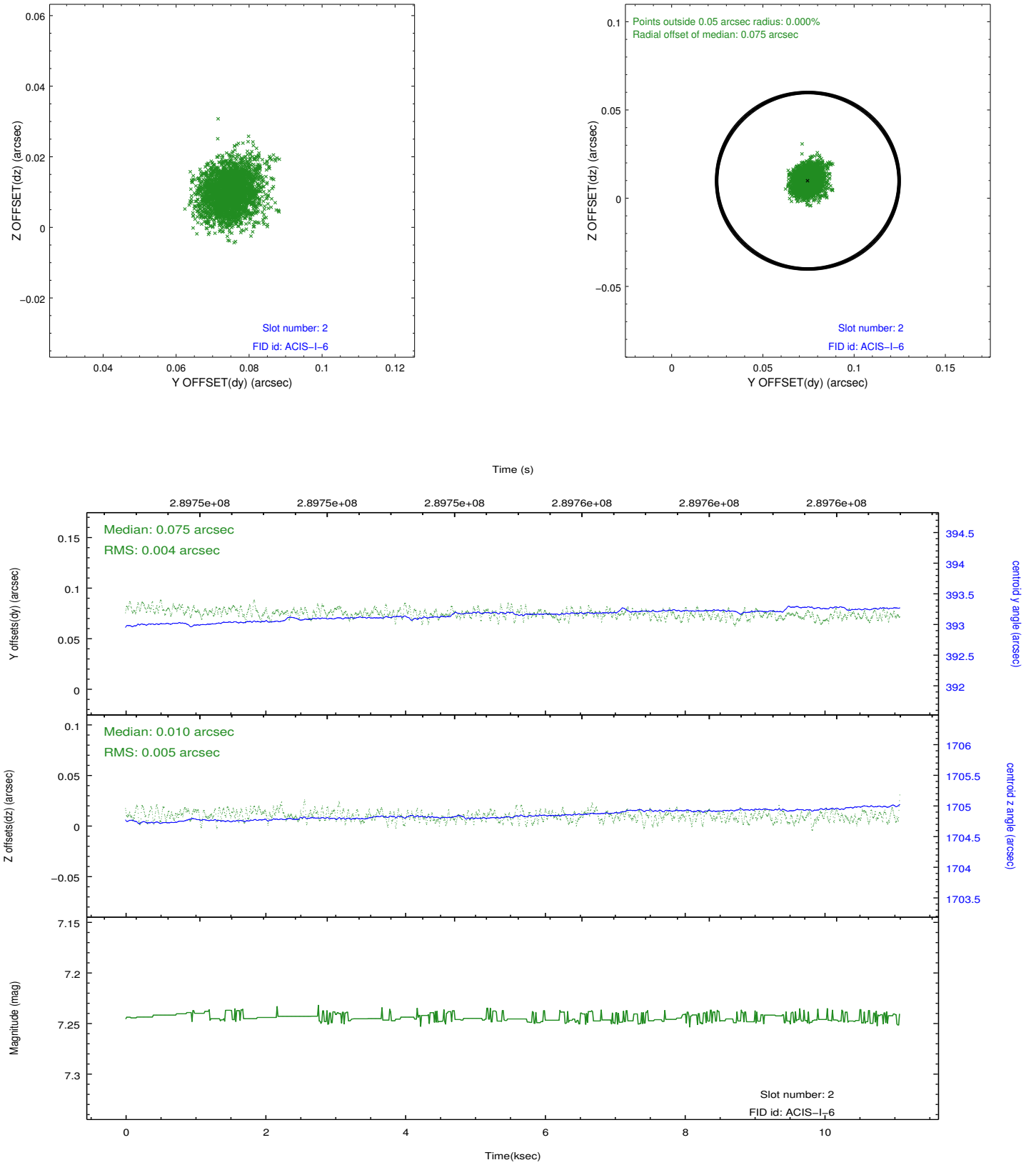
2.5.1 Slot 0



2.5.2 Slot 1



2.5.3 Slot 2



A Summary

A.1 Status

V&V Scientist	Beth Sundheim
V&V Date (YYYY-MM-DD)	2012.04.22
V&V Edition	1
V&V Disposition and Status	OK
V&V Charge Time	11.0763

A.2 Comments