

V&V Reference Report

L2 ASCDS Version : 8.4.4

Observation 9832 - L2 Version 2
Chandra X-Ray Center

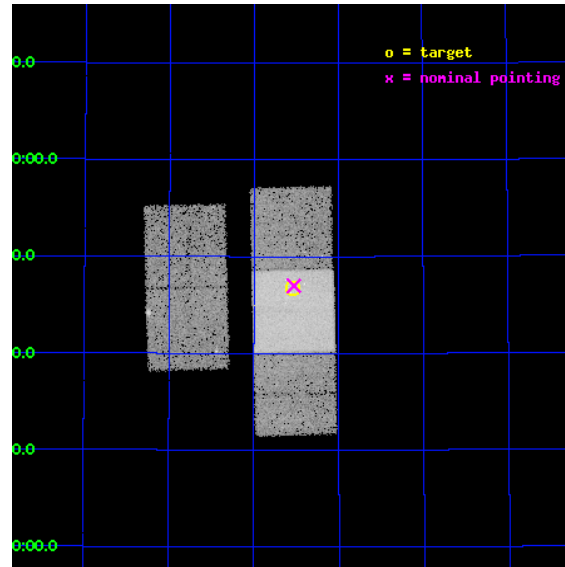
L2 Processing Date : May 10 2012

Contents

1	Front	2
2	OBI	3
2.1	OBI	3
2.1.1	Images	3
2.1.2	Bias	3
2.1.3	Parameters	4
2.1.4	Events	4
2.2	Compared Parameters	5
2.3	Aspect	6
2.4	Star Slots	9
2.4.1	Slot 3	9
2.4.2	Slot 4	10
2.4.3	Slot 5	11
2.4.4	Slot 6	12
2.4.5	Slot 7	13
2.5	FID Slots	14
2.5.1	Slot 0	14
2.5.2	Slot 1	15
2.5.3	Slot 2	16
A	Summary	17
A.1	Status	17
A.2	Comments	17

1 Front

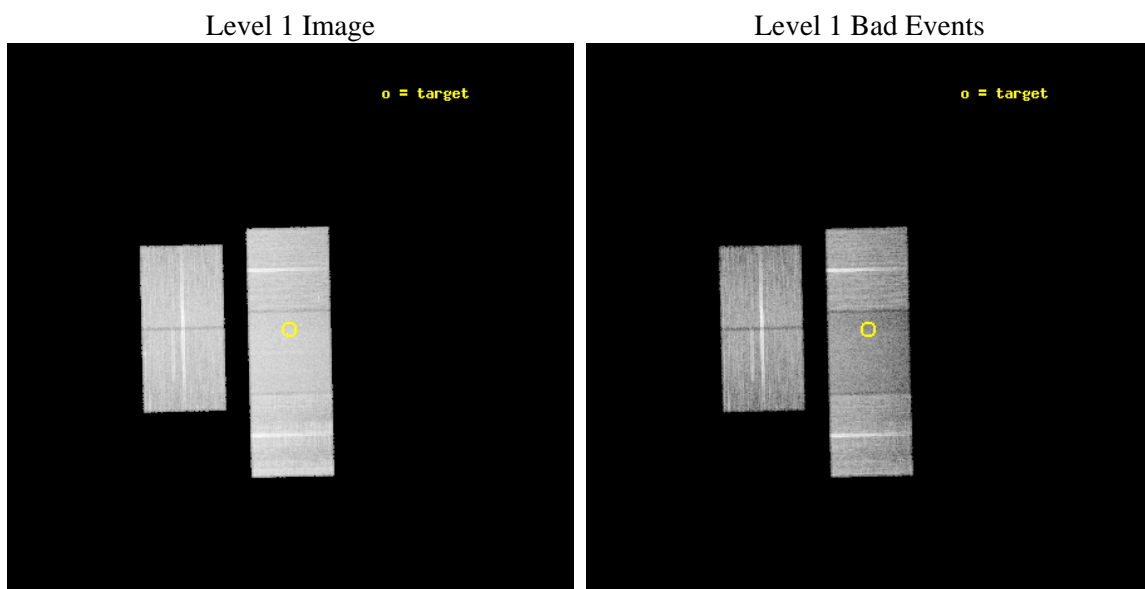
seq_num	701540	Sequence number
obs_id	9832	Observation id
title	Bent Jets in Brightest Cluster Galaxies	Proposal title
observer	Dr Nazirah Jetha	Principal investigator
object	Abell 2220	Source name
dtcycle	0	
cycle	P	events from which exps? Prim/Second/Both
ra_targ	249.886183	Observer's specified target RA [deg]
dec_targ	53.778881	Observer's specified target Dec [deg]
ra_nom	249.8820289556	Nominal RA [deg]
dec_nom	53.783081482445	Nominal Dec [deg]
roll_nom	88.659988394043	Nominal Roll [deg]
revision	2	Processing version of data
ontime	19061.900146604	Sum of GTIs [s]
livetime	18812.842388021	Livetime [s]
ontime2	19058.759176254	Sum of GTIs [s]
ontime3	19058.759146392	Sum of GTIs [s]
ontime6	19055.618156075	Sum of GTIs [s]
ontime7	19061.900146604	Sum of GTIs [s]
ontime8	19055.618315518	Sum of GTIs [s]
l2events	135005	Number of level 2 events



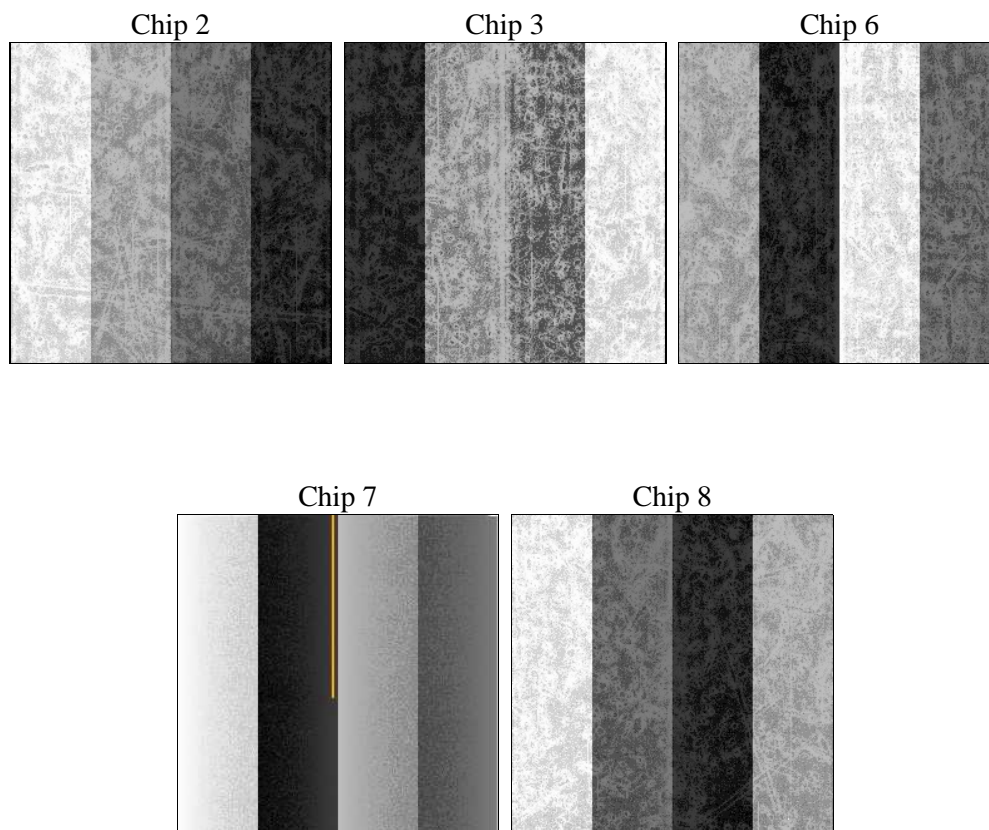
2 OBI

2.1 OBI

2.1.1 Images



2.1.2 Bias



2.1.3 Parameters

obi_num	0	Obi number	sched_exp_time	19000.000000	[s] Scheduled observation exposure time
ascdsver	8.4.4	Processing system revision	ontime	19061.900146604	Sum of GTIs [s]
caldbver	4.4.9	 	ontime2	19058.759176254	Sum of GTIs [s]
date	2012-05-10T22:31:00	Date and time of file creation	ontime3	19058.759146392	Sum of GTIs [s]
revision	2	Processing version of data	ontime6	19055.618156075	Sum of GTIs [s]
			ontime7	19061.900146604	Sum of GTIs [s]
			ontime8	19055.618315518	Sum of GTIs [s]
			l1events	837491	Number of level 1 events

2.1.4 Events

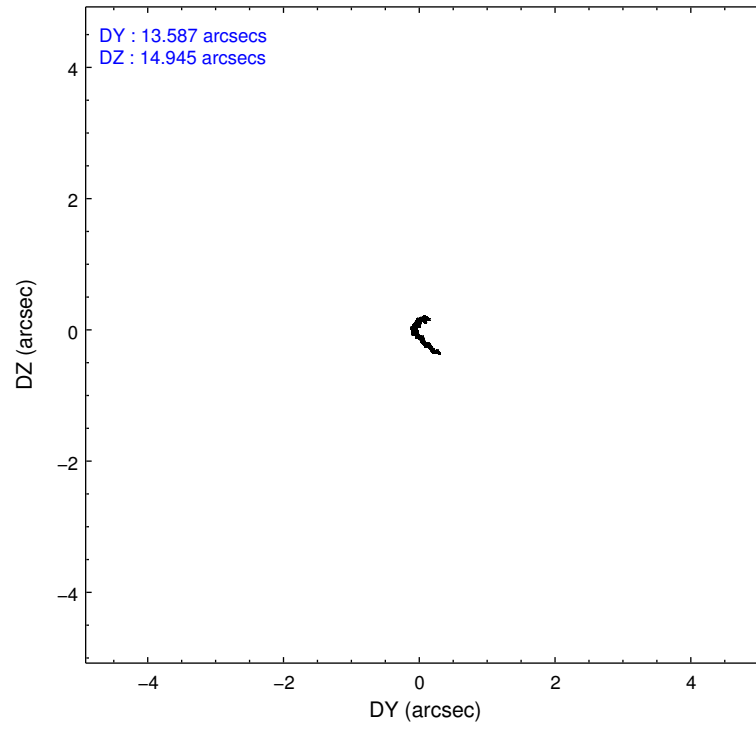
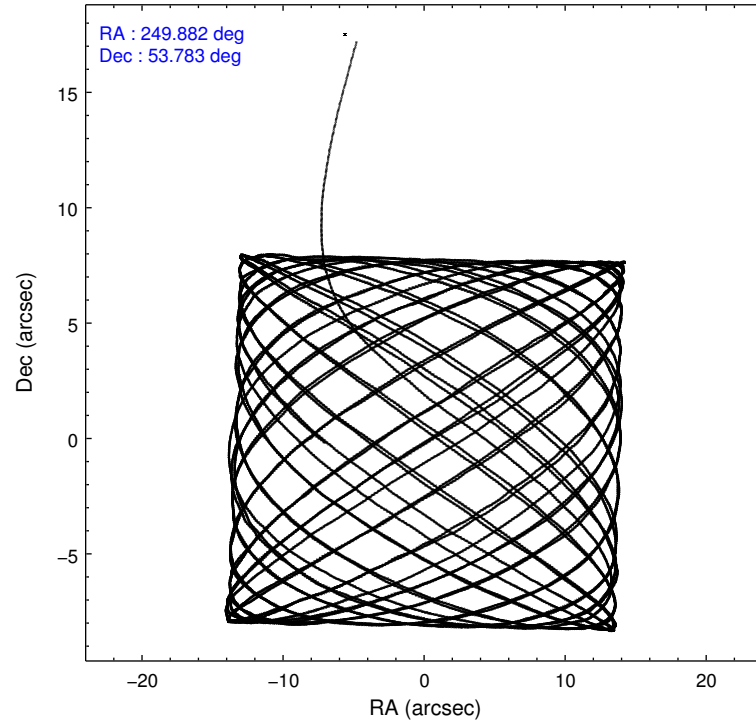
	ccd 2	ccd 3	ccd 6	ccd 7	ccd 8
level 1 events	156153	151527	158014	176654	195143
rejected events	141236	136787	141171	94648	147475
rejected %	90%	90%	89%	53%	75%

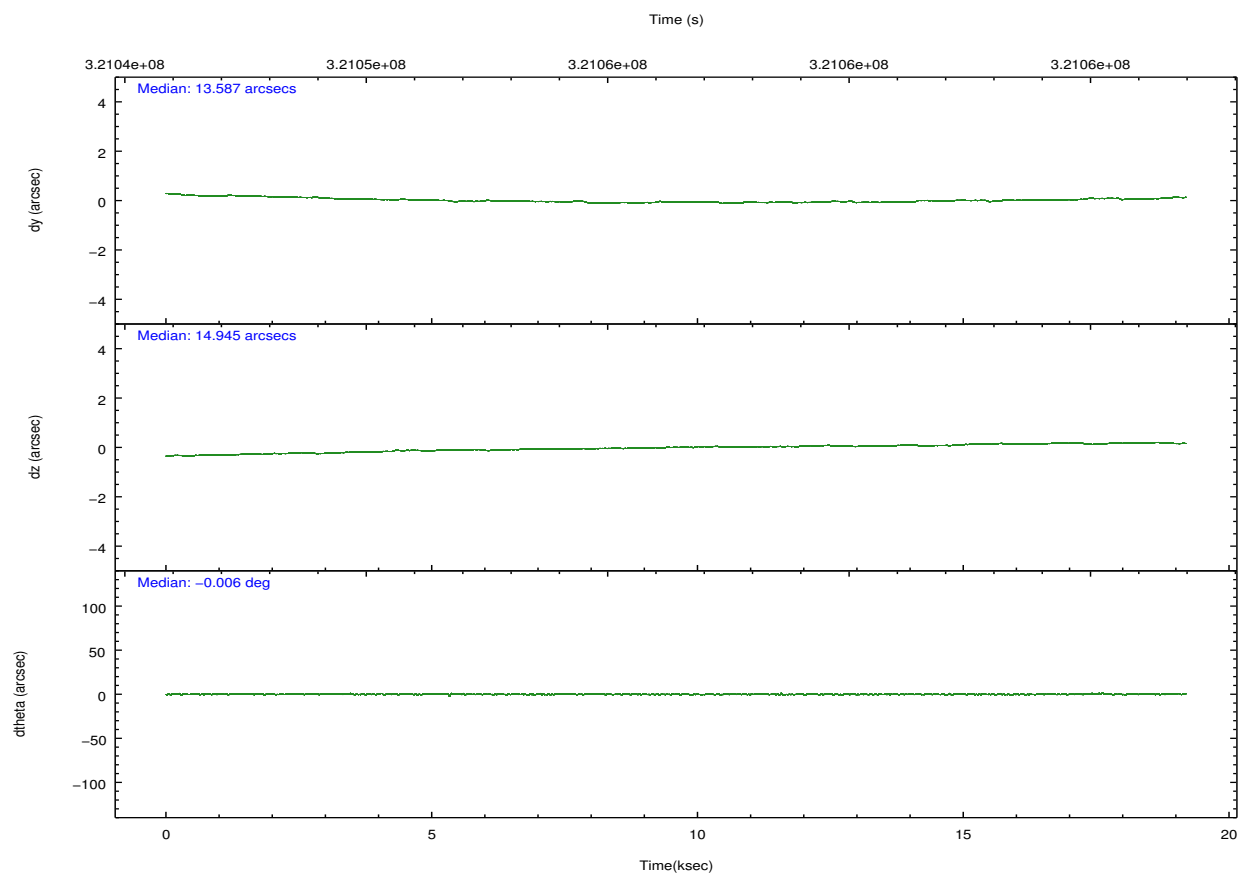
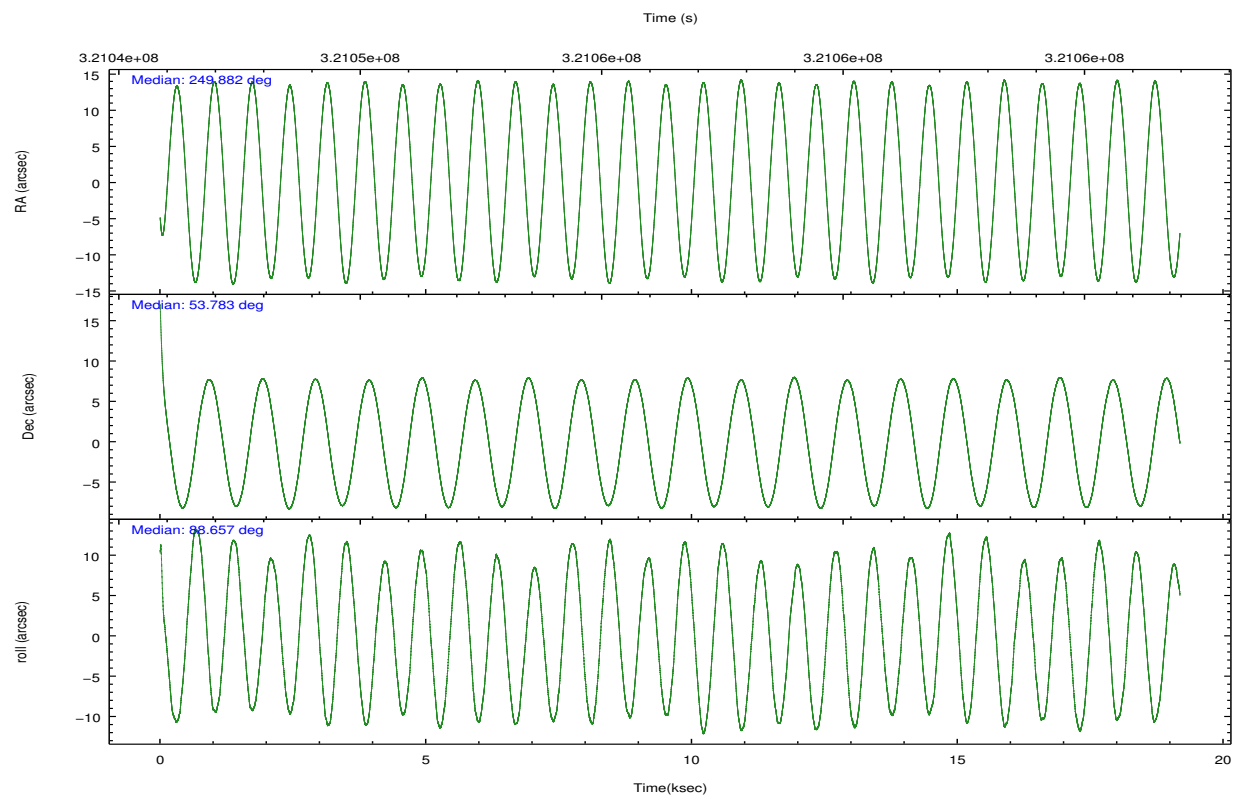
	ccd 2	ccd 3	ccd 6	ccd 7	ccd 8
grade 0 events	5404	5296	6309	8187	14410
	3%	3%	3%	4%	7%
grade 1 events	85	92	88	196	176
	0%	0%	0%	0%	0%
grade 2 events	3603	3231	3604	16733	10945
	2%	2%	2%	9%	5%
grade 3 events	1616	1651	1749	7741	5390
	1%	1%	1%	4%	2%
grade 4 events	1597	1634	1730	7527	4760
	1%	1%	1%	4%	2%
grade 5 events	5018	6228	6418	18360	8988
	3%	4%	4%	10%	4%
grade 6 events	2699	2932	3457	41847	12184
	1%	1%	2%	23%	6%
grade 7 events	136131	130463	134659	76063	138290
	87%	86%	85%	43%	70%

2.2 Compared Parameters

Parameter	Planned	Actual	Parameter	Planned	Actual
Instrument	ACIS	ACIS	Obspar format version number	7	7
Detector	ACIS-23678	ACIS-23678	Obspar file type	PREDICTED	ACTUAL
Grating	NONE	NONE	Obspar update status	NONE	UPDATED
Data mode	VFAINT	VFAINT	CCD I0 on	N	N
Observation mode	POINTING	POINTING	CCD I1 on	N	N
[deg] Pointing RA	249.904769	249.8820289556025	CCD I2 on	O1	Y
[deg] Pointing Dec	53.759242	53.7830814824448	CCD I3 on	O2	Y
[deg] Pointing Roll	88.485006	88.65998839404281	CCD S0 on	N	N
[mm] SIM focus pos	-0.684267	-0.6828225247311905	CCD S1 on	N	N
[mm] SIM defocus	0	0.001444936568705701	CCD S2 on	O3	Y
[mm] SIM translation stage pos	-190.132523	-190.1400660498719	CCD S3 on	Y	Y
[mm] SIM translation stage offset	0	0.00754346686406393	CCD S4 on	O4	Y
[s] Observation start time (MET)	321047006.184000	321046061.15781	CCD S5 on	N	N
Observation start date	2008-03-04T19:42:21	2008-03-04T19:27:41	Number of optional ACIS chips dropped	0	0
[s] Observation end time (MET)	321066006.184000	321066625.73381	On-chip summing requested	N	N
Observation end date	2008-03-05T00:59:01	2008-03-05T01:10:25	Subarray requested	NONE	NONE
Read mode	TIMED	TIMED	Alternating exposures requested	N	N
			[s] Primary exposure time	0.000000	3.1

2.3 Aspect



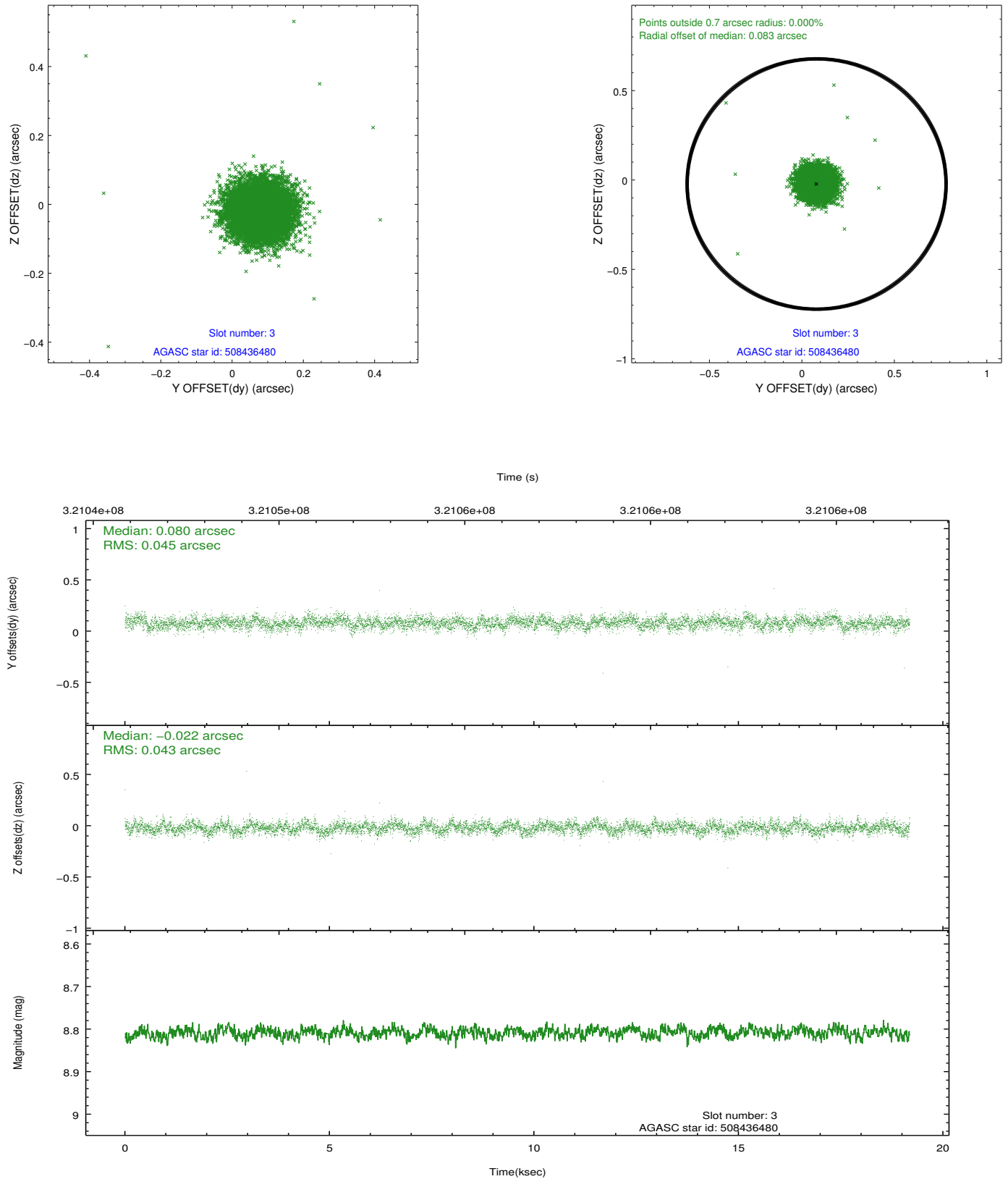


Slot Statistics

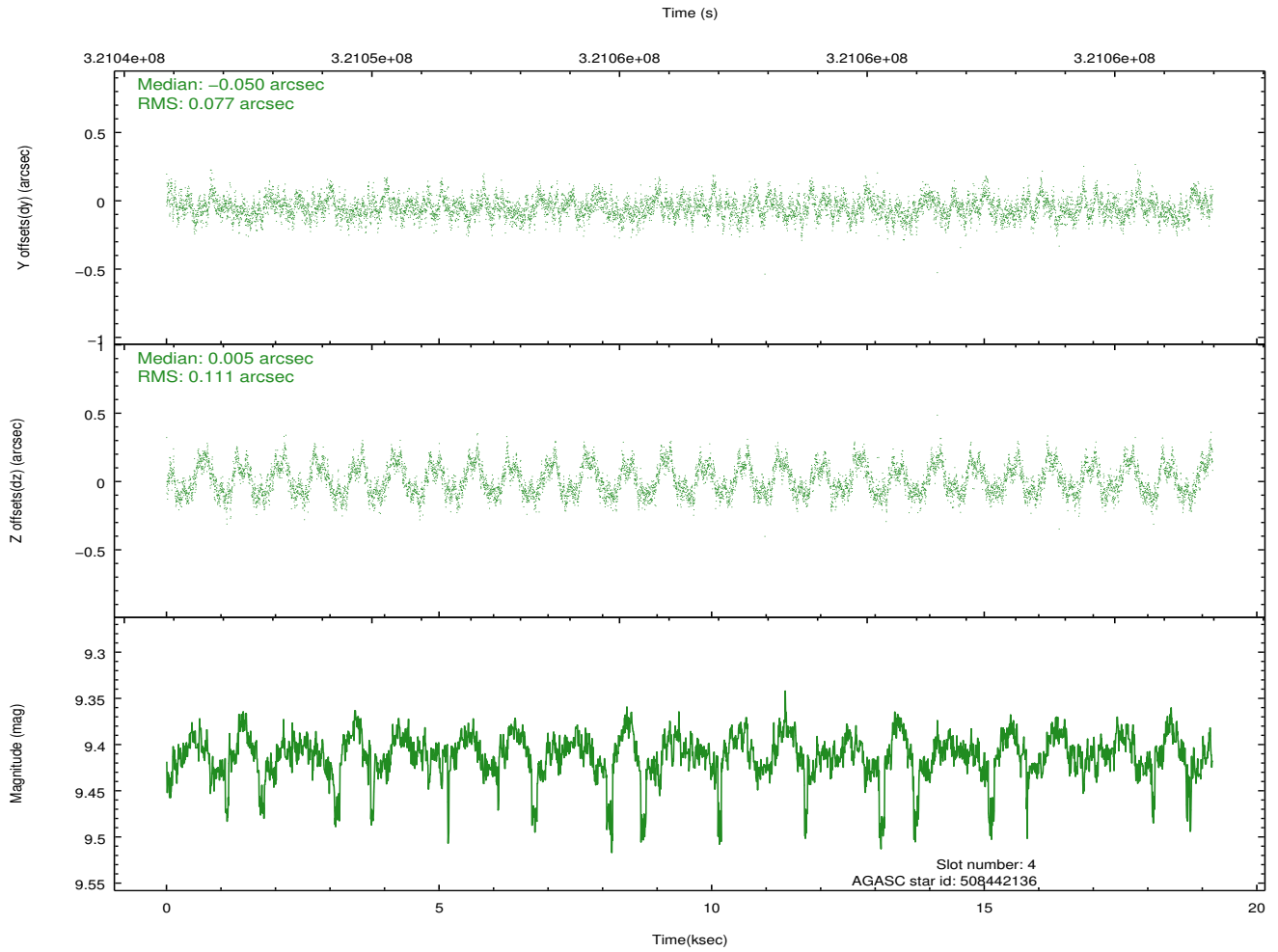
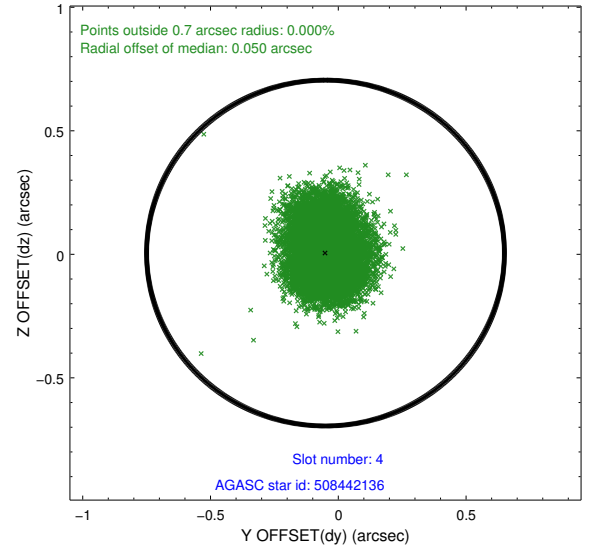
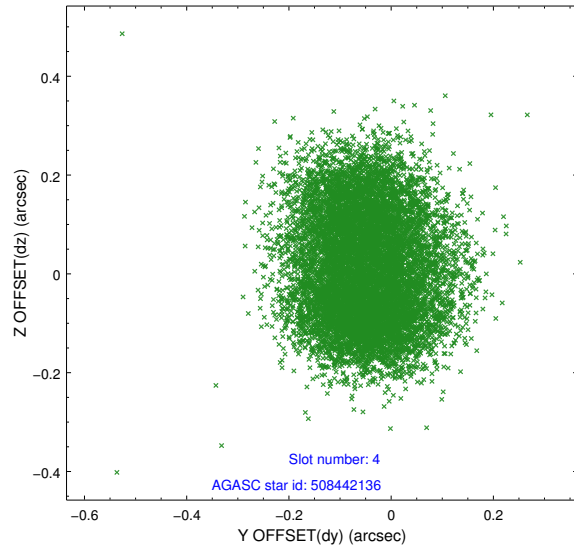
slot	status	id	mag	n_pts	med_dy	med_dz	dr1	dr2	ra	dec	mean_y	mean_z
0	FID	ACIS-S-1	7.19	4679	0.038	-0.034	0.010	0.019	0.000000	0.000000	929.55	-1731.95
1	FID	ACIS-S-4	7.19	4680	0.138	0.009	0.009	0.015	0.000000	0.000000	2147.15	172.06
2	FID	ACIS-S-5	7.22	4679	-0.203	0.037	0.008	0.013	0.000000	0.000000	-1819.32	165.86
3	GUIDE	508436480	8.81	9351	0.080	-0.022	0.065	0.106	249.760792	53.146937	-2211.33	252.53
4	GUIDE	508442136	9.41	9322	-0.050	0.005	0.147	0.222	250.394353	54.240145	1761.30	-983.47
5	GUIDE	508445160	9.28	9350	-0.195	-0.142	0.120	0.179	249.450875	54.079473	1130.14	988.81
6	GUIDE	508446832	9.03	9347	0.074	0.005	0.080	0.129	249.190096	53.496641	-977.52	1505.52
7	GUIDE	508448008	8.96	9352	0.094	0.138	0.093	0.150	250.573060	53.621979	-449.46	-1438.88

2.4 Star Slots

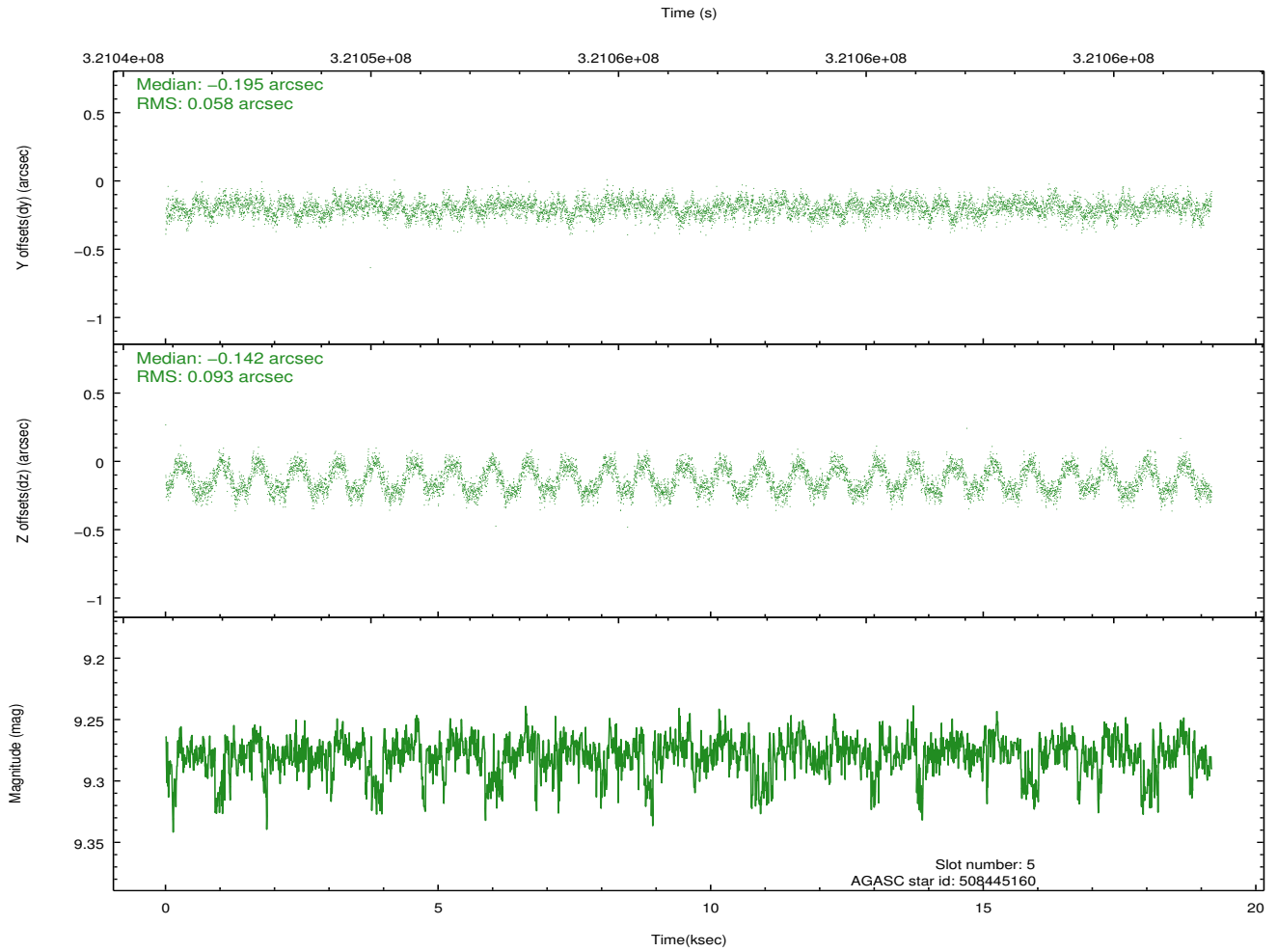
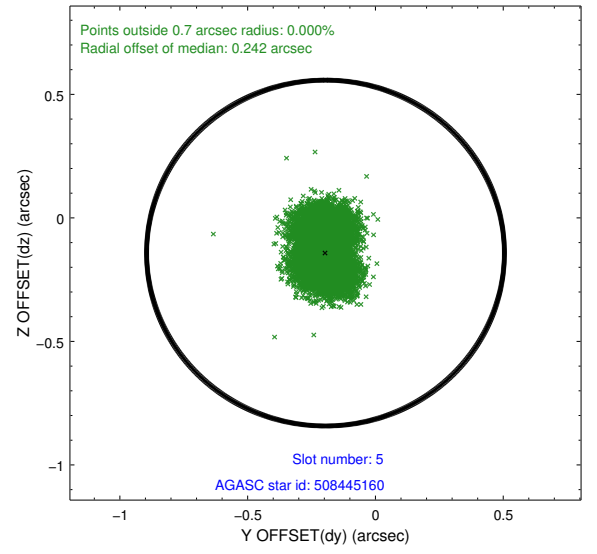
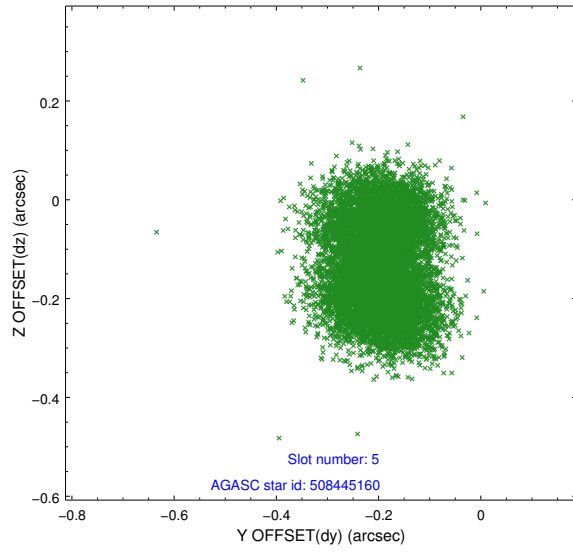
2.4.1 Slot 3



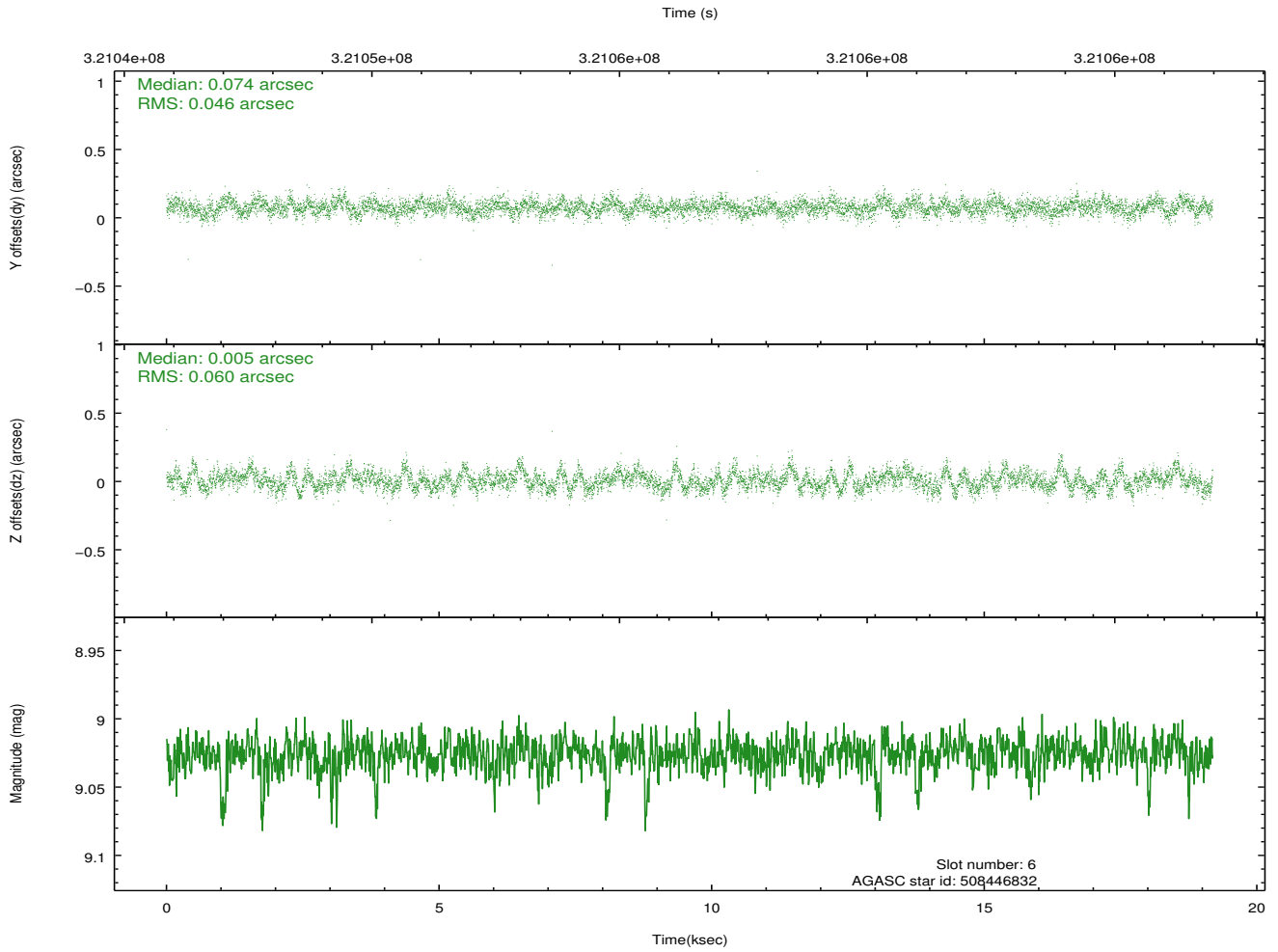
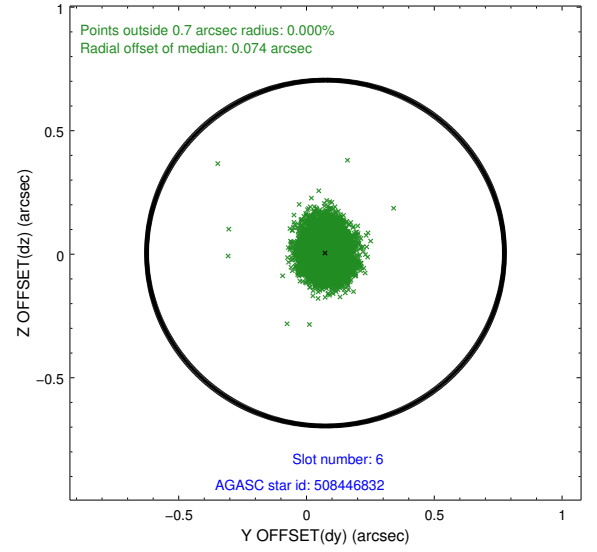
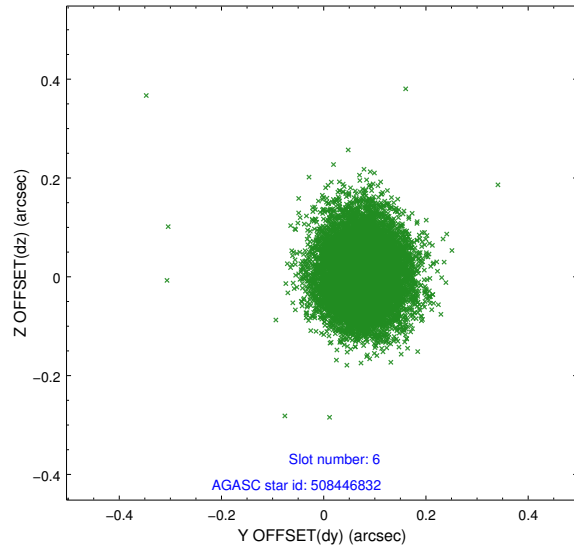
2.4.2 Slot 4



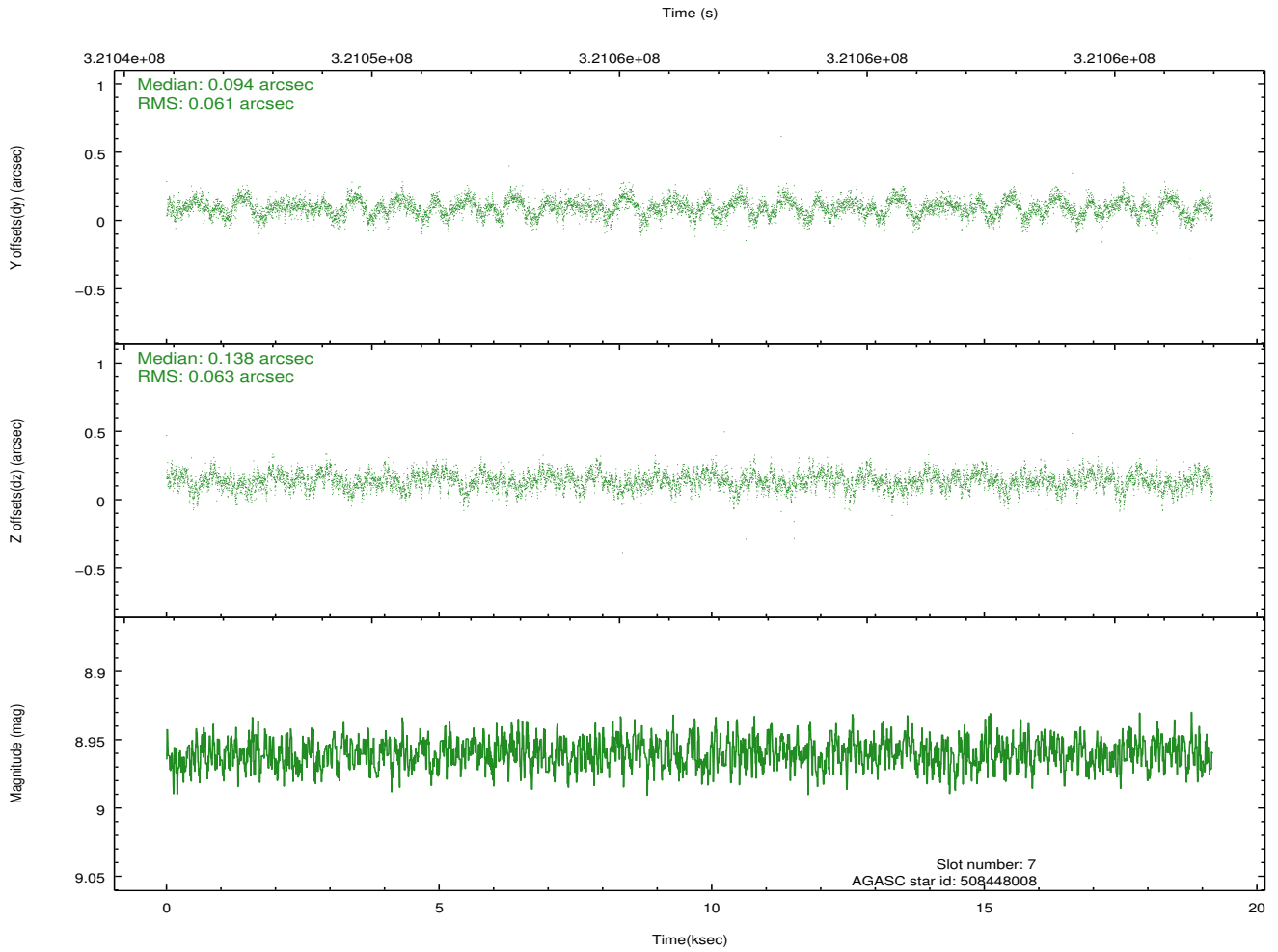
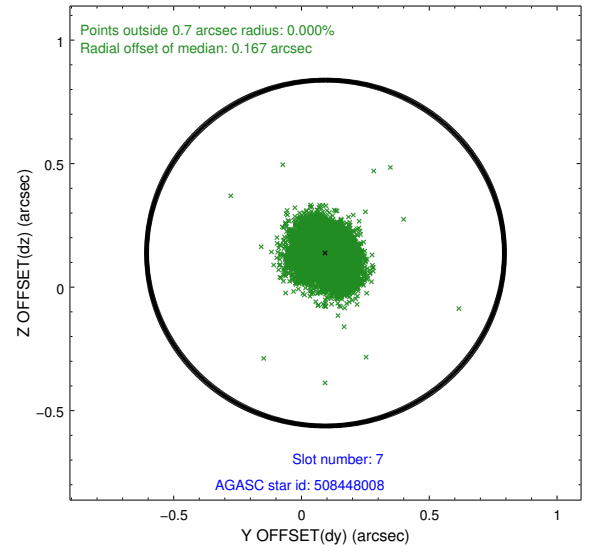
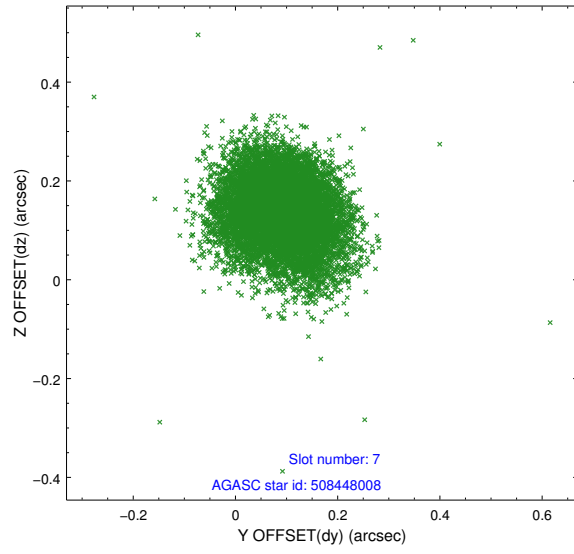
2.4.3 Slot 5



2.4.4 Slot 6

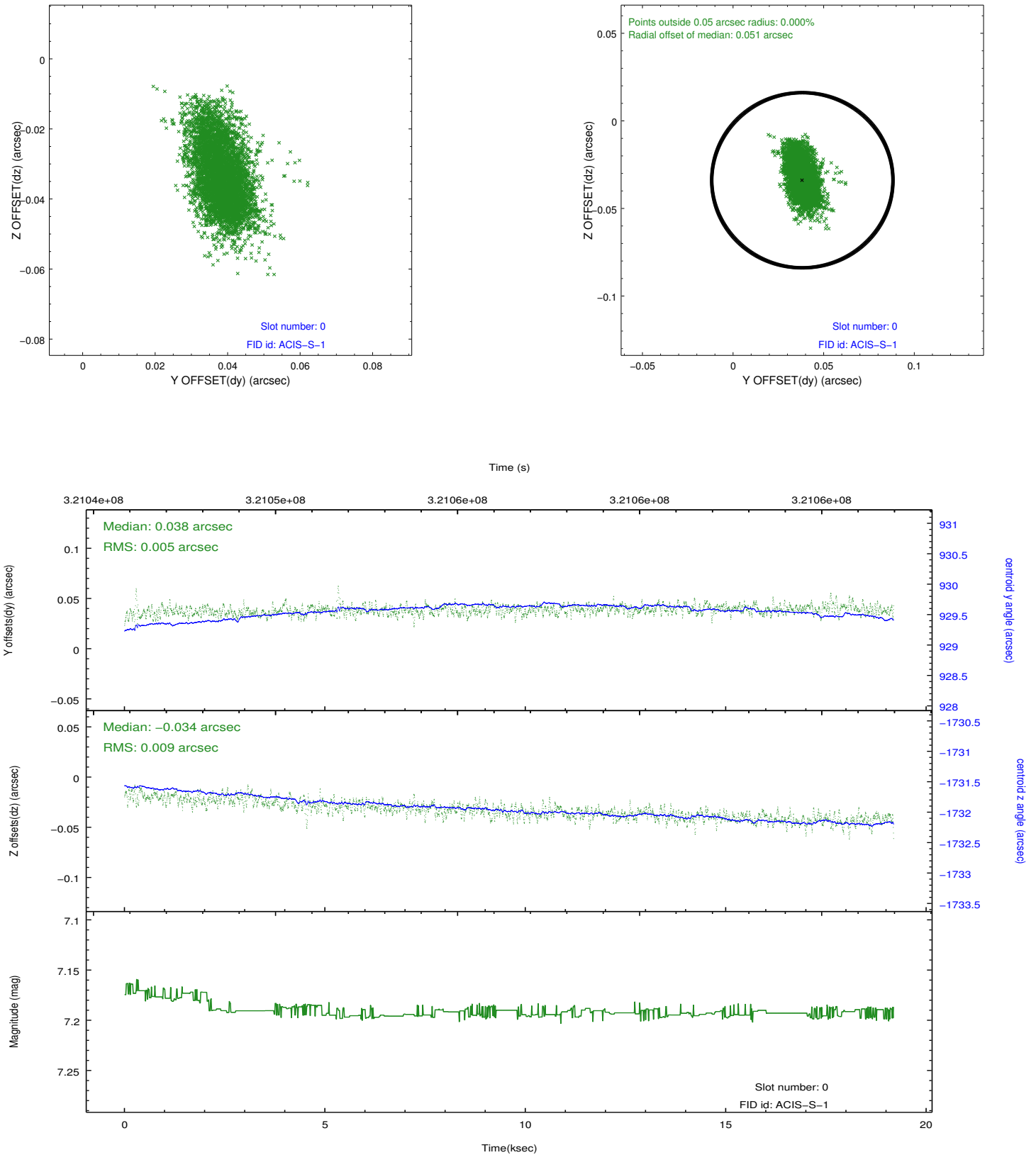


2.4.5 Slot 7

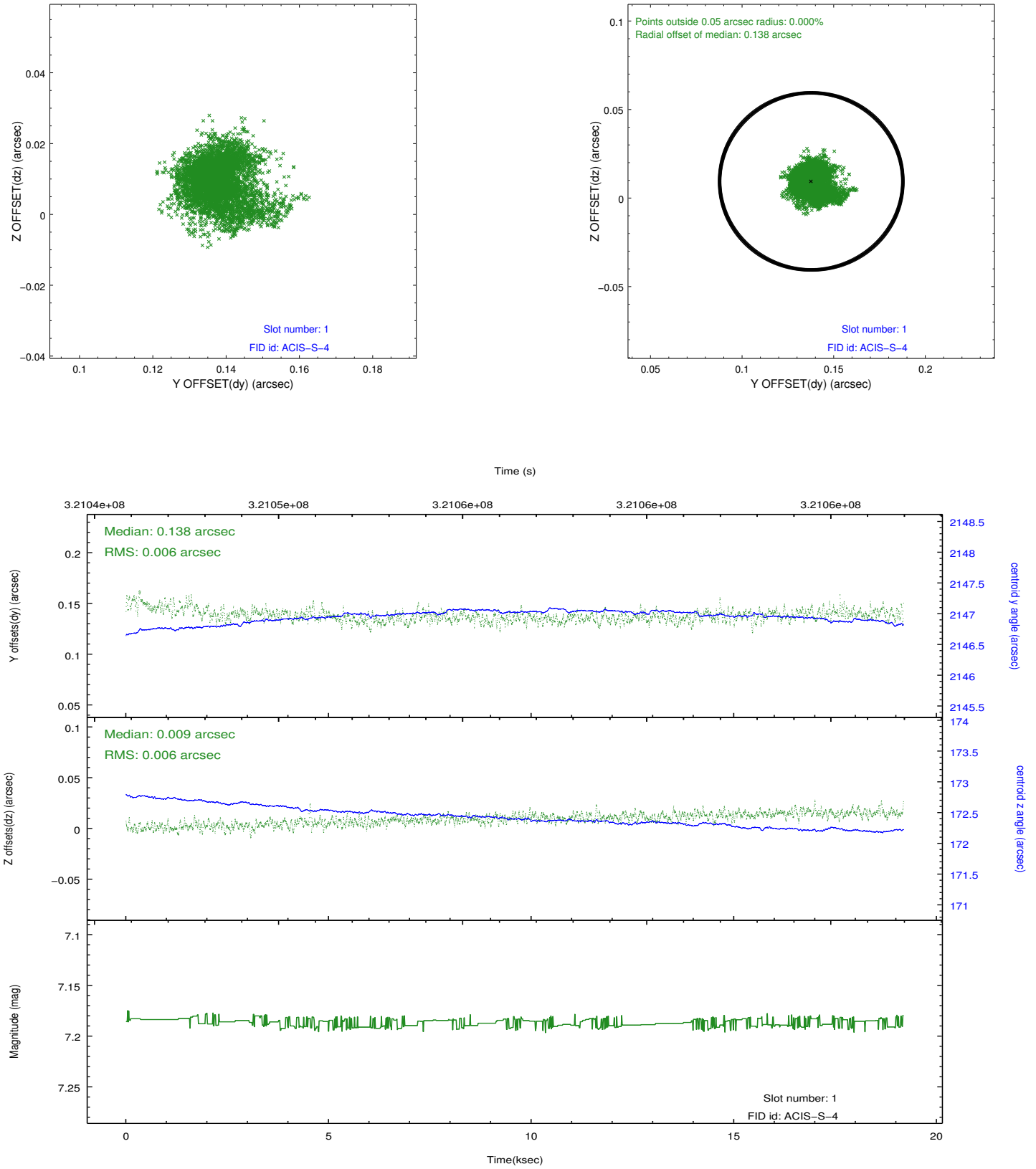


2.5 FID Slots

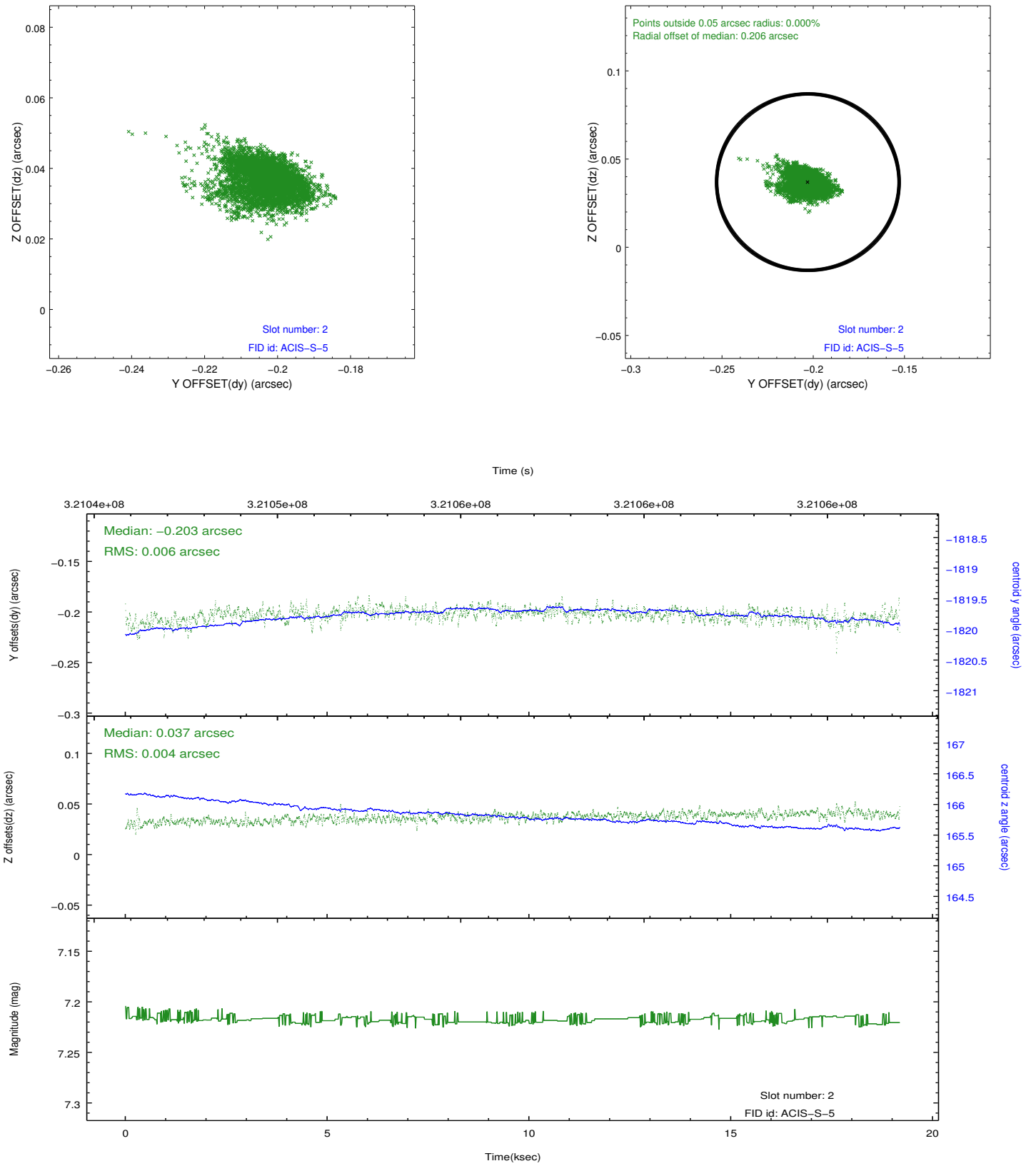
2.5.1 Slot 0



2.5.2 Slot 1



2.5.3 Slot 2



A Summary

A.1 Status

V&V Scientist	Beth Sundheim
V&V Date (YYYY-MM-DD)	2012.05.14
V&V Edition	1
V&V Disposition and Status	OK
V&V Charge Time	19.0619001

A.2 Comments