

# V&V Reference Report

## L2 ASCDS Version : 8.4.4

Observation 7889 - L2 Version 2  
Chandra X-Ray Center

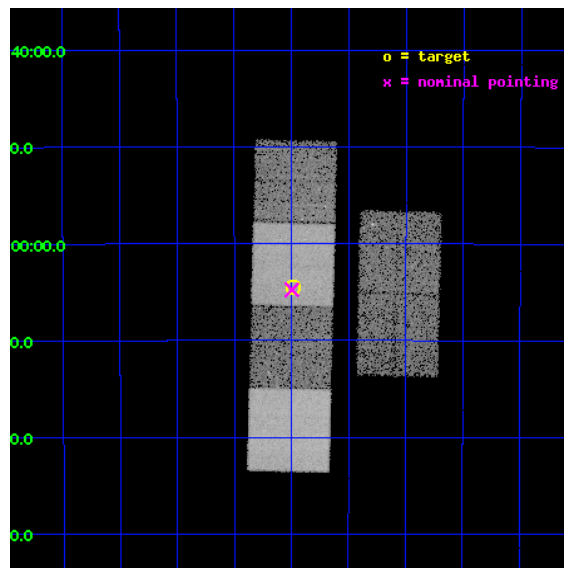
L2 Processing Date : Apr 27 2012

## Contents

<b>1</b>	<b>Front</b>	<b>2</b>
<b>2</b>	<b>OBI</b>	<b>3</b>
2.1	OBI . . . . .	3
2.1.1	Images . . . . .	3
2.1.2	Bias . . . . .	3
2.1.3	Parameters . . . . .	4
2.1.4	Events . . . . .	4
2.2	Compared Parameters . . . . .	5
2.3	Aspect . . . . .	6
2.4	Star Slots . . . . .	9
2.4.1	Slot 3 . . . . .	9
2.4.2	Slot 4 . . . . .	10
2.4.3	Slot 5 . . . . .	11
2.4.4	Slot 6 . . . . .	12
2.4.5	Slot 7 . . . . .	13
2.5	FID Slots . . . . .	14
2.5.1	Slot 0 . . . . .	14
2.5.2	Slot 1 . . . . .	15
2.5.3	Slot 2 . . . . .	16
<b>A</b>	<b>Summary</b>	<b>17</b>
A.1	Status . . . . .	17
A.2	Comments . . . . .	17

# 1 Front

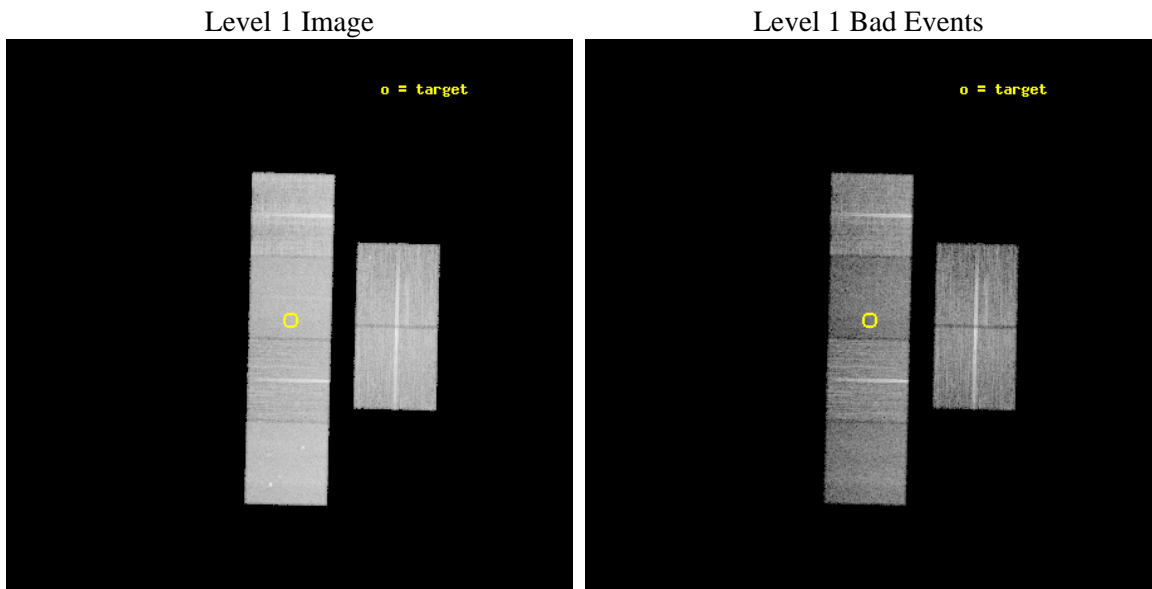
seq_num	701552	Sequence number
obs_id	7889	Observation id
title	The Chandra-RBGS Survey of a Complete Sample of Luminous Infrared Galaxies	Proposal title
observer	Professor David Sanders	Principal investigator
object	IRAS F14378-3651	Source name
dtcycle	0	&#160
cycle	P	events from which exps? Prim/Second/Both
ra_targ	220.245833	Observer's specified target RA [deg]
dec_targ	-37.075556	Observer's specified target Dec [deg]
ra_nom	220.24914109969	Nominal RA [deg]
dec_nom	-37.079653287604	Nominal Dec [deg]
roll_nom	271.38605923152	Nominal Roll [deg]
revision	2	Processing version of data
ontime	14040.647131443	Sum of GTIs [s]
livetime	13862.856003202	Livetime [s]
ontime2	14037.447171271	Sum of GTIs [s]
ontime3	14040.524011433	Sum of GTIs [s]
ontime5	14040.60609144	Sum of GTIs [s]
ontime6	14040.565051436	Sum of GTIs [s]
ontime7	14040.647131443	Sum of GTIs [s]
ontime8	14040.48297143	Sum of GTIs [s]
l2events	169192	Number of level 2 events



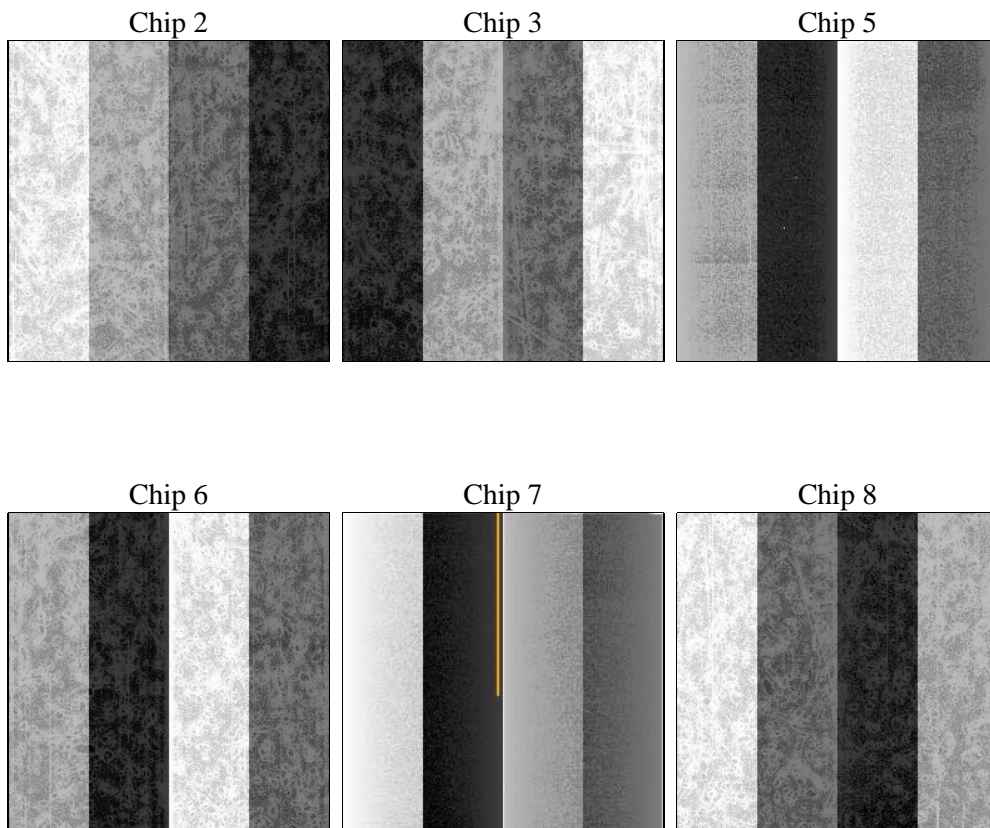
## 2 OBI

### 2.1 OBI

#### 2.1.1 Images



#### 2.1.2 Bias



### 2.1.3 Parameters

obi_num	0	Obi number	sched_exp_time	14000.000000	[s] Scheduled observation exposure time
ascdsver	8.4.4	Processing system revision	ontime	14040.647131443	Sum of GTIs [s]
caldsver	4.4.9	&#160	ontime2	14037.447171271	Sum of GTIs [s]
date	2012-04-27T02:01:56	Date and time of file creation	ontime3	14040.524011433	Sum of GTIs [s]
revision	2	Processing version of data	ontime5	14040.60609144	Sum of GTIs [s]
			ontime6	14040.565051436	Sum of GTIs [s]
			ontime7	14040.647131443	Sum of GTIs [s]
			ontime8	14040.48297143	Sum of GTIs [s]
			l1events	769480	Number of level 1 events

### 2.1.4 Events

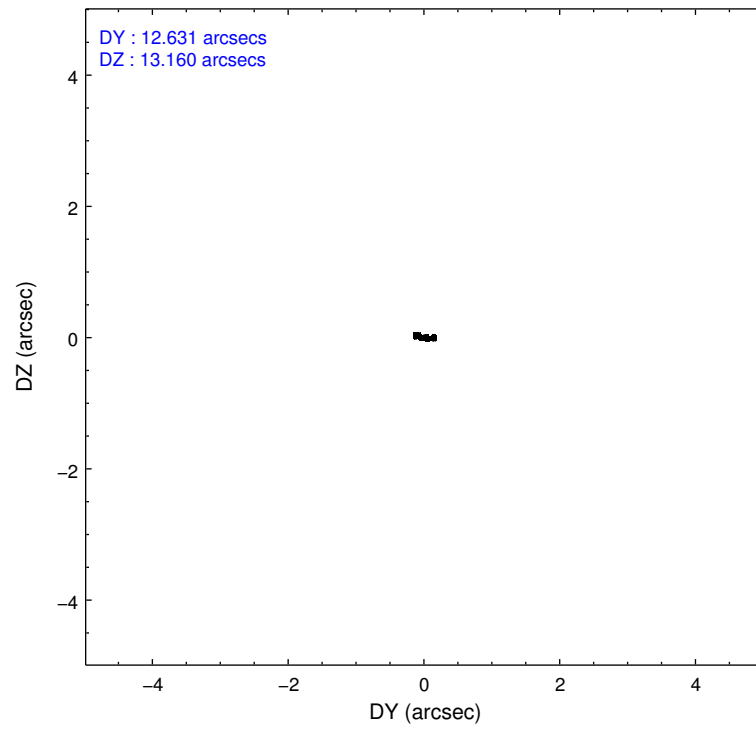
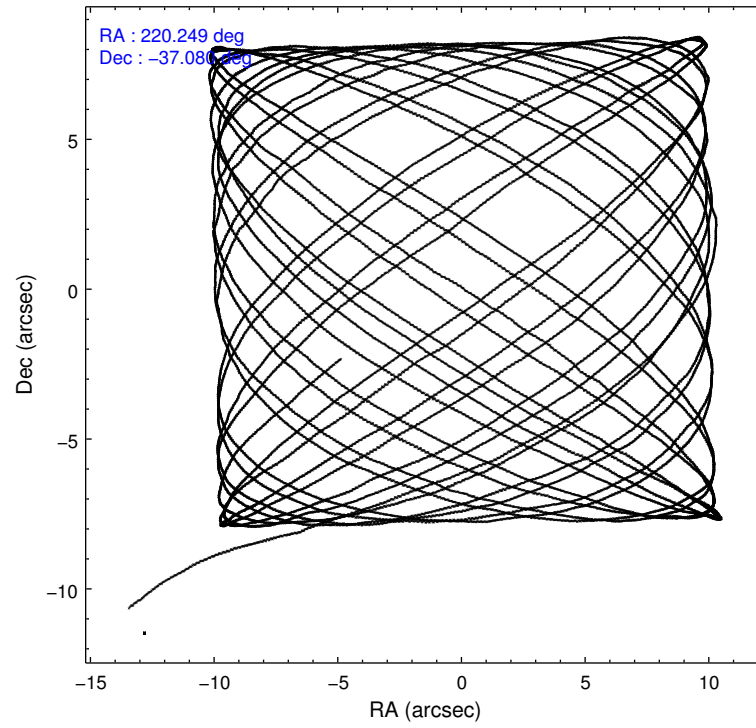
	ccd 2	ccd 3	ccd 5	ccd 6	ccd 7	ccd 8		ccd 2	ccd 3	ccd 5	ccd 6	ccd 7	ccd 8
level 1 events	121636	110217	151647	115175	125606	145199	grade 0 events	4104	3892	6138	4604	5821	10649
rejected events	110747	99571	76891	102988	68081	110724		3%	3%	4%	3%	4%	7%
rejected %	91%	90%	50%	89%	54%	76%	grade 1 events	56	68	264	52	159	129
								0%	0%	0%	0%	0%	0%
							grade 2 events	2526	2227	22395	2614	11521	7842
								2%	2%	14%	2%	9%	5%
							grade 3 events	1152	1222	3045	1267	5188	3620
								0%	1%	2%	1%	4%	2%
							grade 4 events	1137	1198	2848	1189	5070	3396
								0%	1%	1%	1%	4%	2%
							grade 5 events	3609	4548	11095	4477	12830	6462
								2%	4%	7%	3%	10%	4%
							grade 6 events	1974	2114	40359	2519	29949	8979
								1%	1%	26%	2%	23%	6%
							grade 7 events	107078	94948	65503	98453	55068	104122
								88%	86%	43%	85%	43%	71%

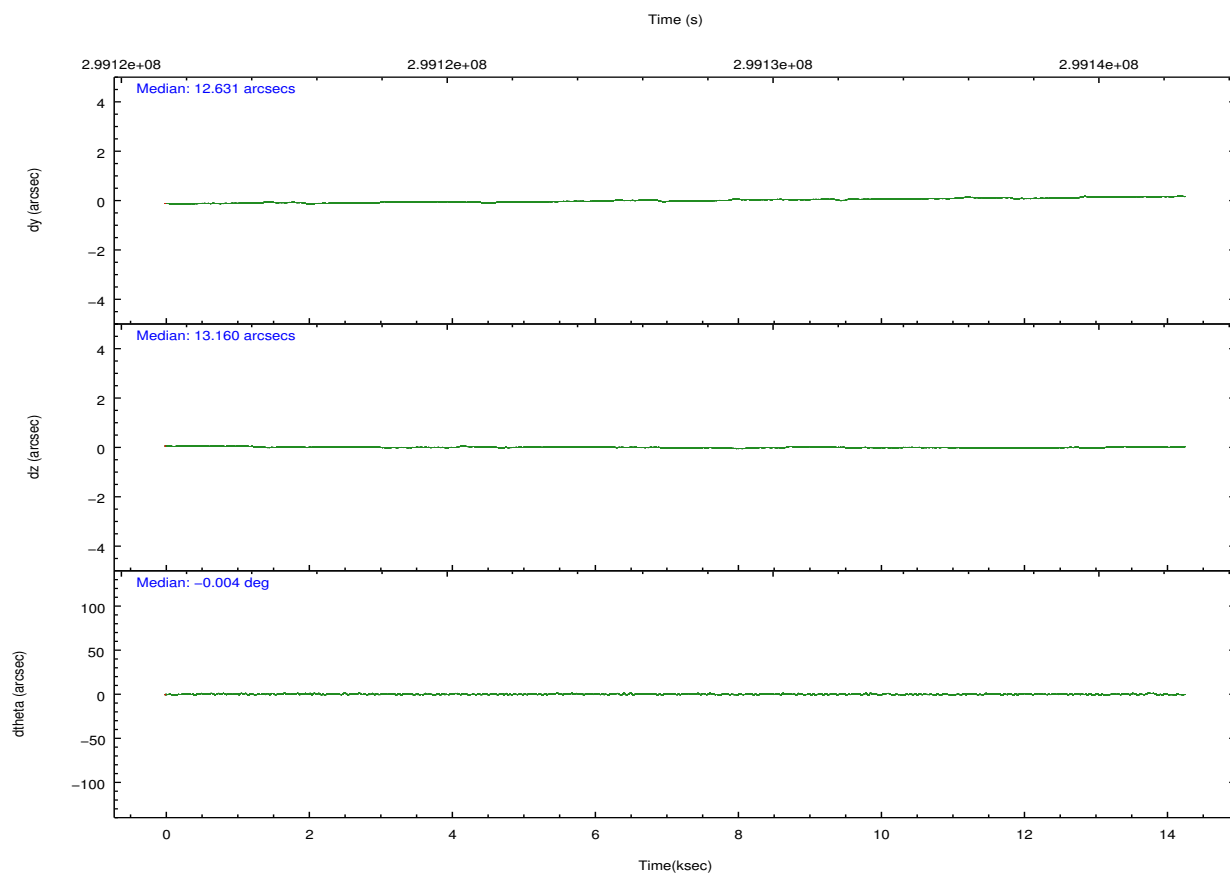
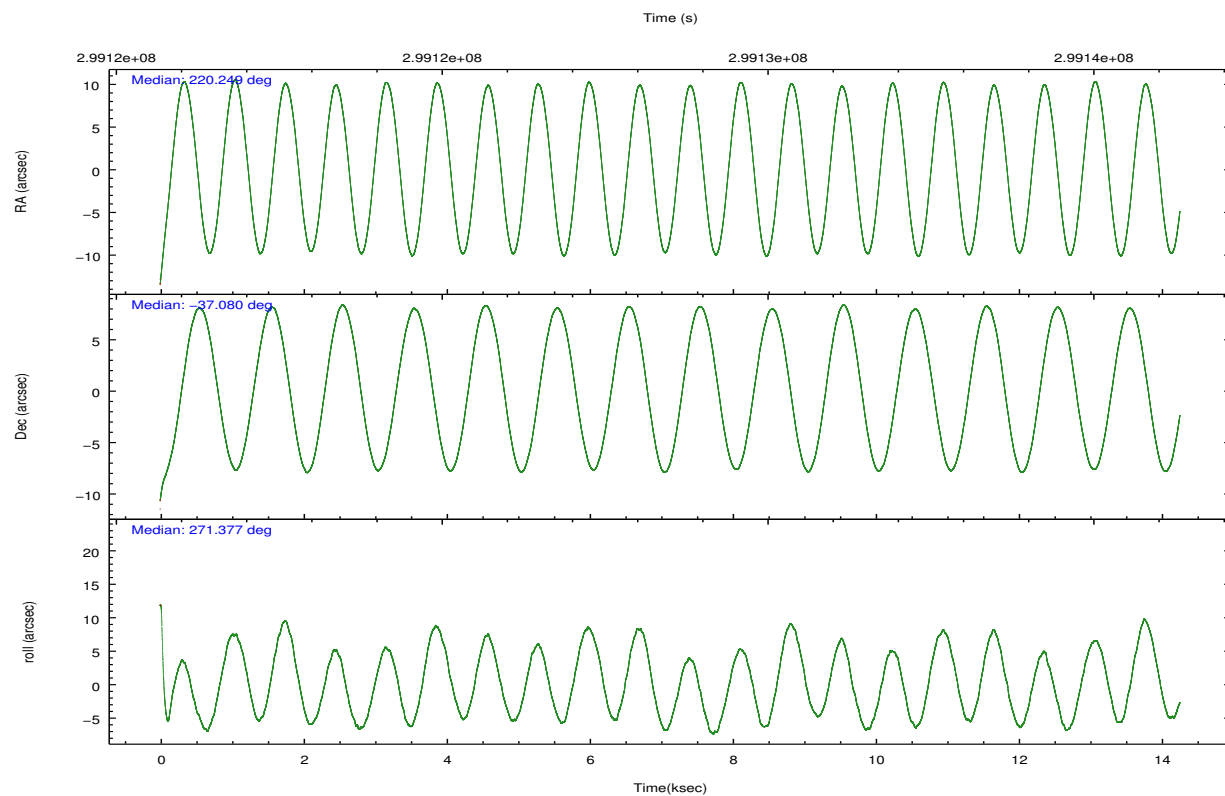


## 2.2 Compared Parameters

Parameter	Planned	Actual	Parameter	Planned	Actual
Instrument	ACIS	ACIS	Obspar format version number	7	7
Detector	ACIS-235678	ACIS-235678	Obspar file type	PREDICTED	ACTUAL
Grating	NONE	NONE	Obspar update status	NONE	UPDATED
Data mode	VFAINT	VFAINT	CCD I0 on	N	N
Observation mode	POINTING	POINTING	CCD I1 on	N	N
[deg] Pointing RA	220.230904	220.249141099691	CCD I2 on	O1	Y
[deg] Pointing Dec	-37.056467	-37.07965328760417	CCD I3 on	O2	Y
[deg] Pointing Roll	271.218415	271.3860592315223	CCD S0 on	N	N
[mm] SIM focus pos	-0.684267	-0.6828225247311905	CCD S1 on	O3	Y
[mm] SIM defocus	0	0.001444936568705701	CCD S2 on	O5	Y
[mm] SIM translation stage pos	-190.132523	-190.1425803651734	CCD S3 on	Y	Y
[mm] SIM translation stage offset	0	0.01005778216563158	CCD S4 on	O4	Y
[s] Observation start time (MET)	299121621.184000	299120578.76269	CCD S5 on	N	N
Observation start date	2007-06-25T01:19:16	2007-06-25T01:02:58	Number of optional ACIS chips dropped	0	0
[s] Observation end time (MET)	299135621.184000	299136308.41345	On-chip summing requested	N	N
Observation end date	2007-06-25T05:12:36	2007-06-25T05:25:08	Subarray requested	NONE	NONE
Read mode	TIMED	TIMED	Alternating exposures requested	N	N
			[s] Primary exposure time	0.000000	3.2

## 2.3 Aspect



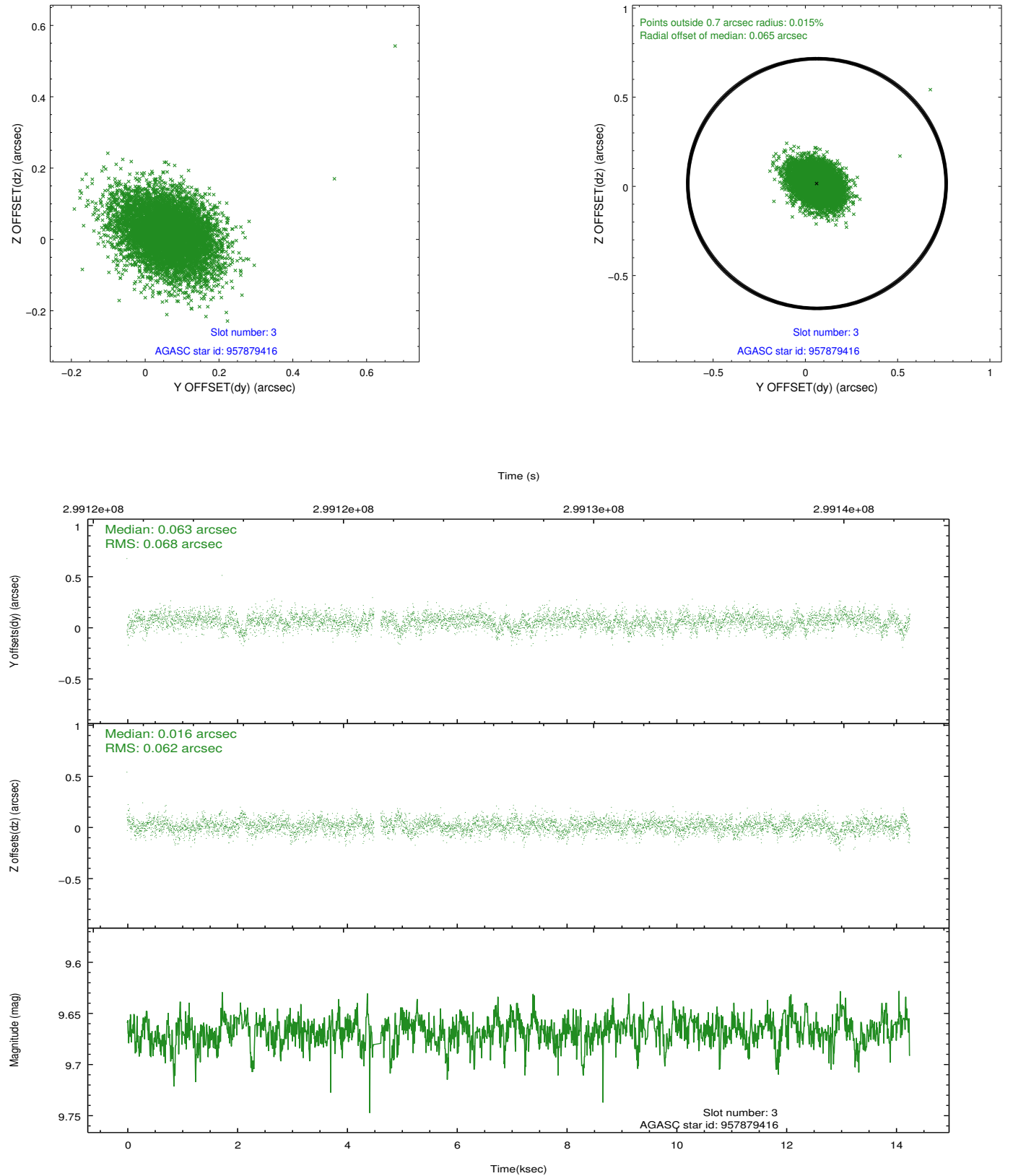


### Slot Statistics

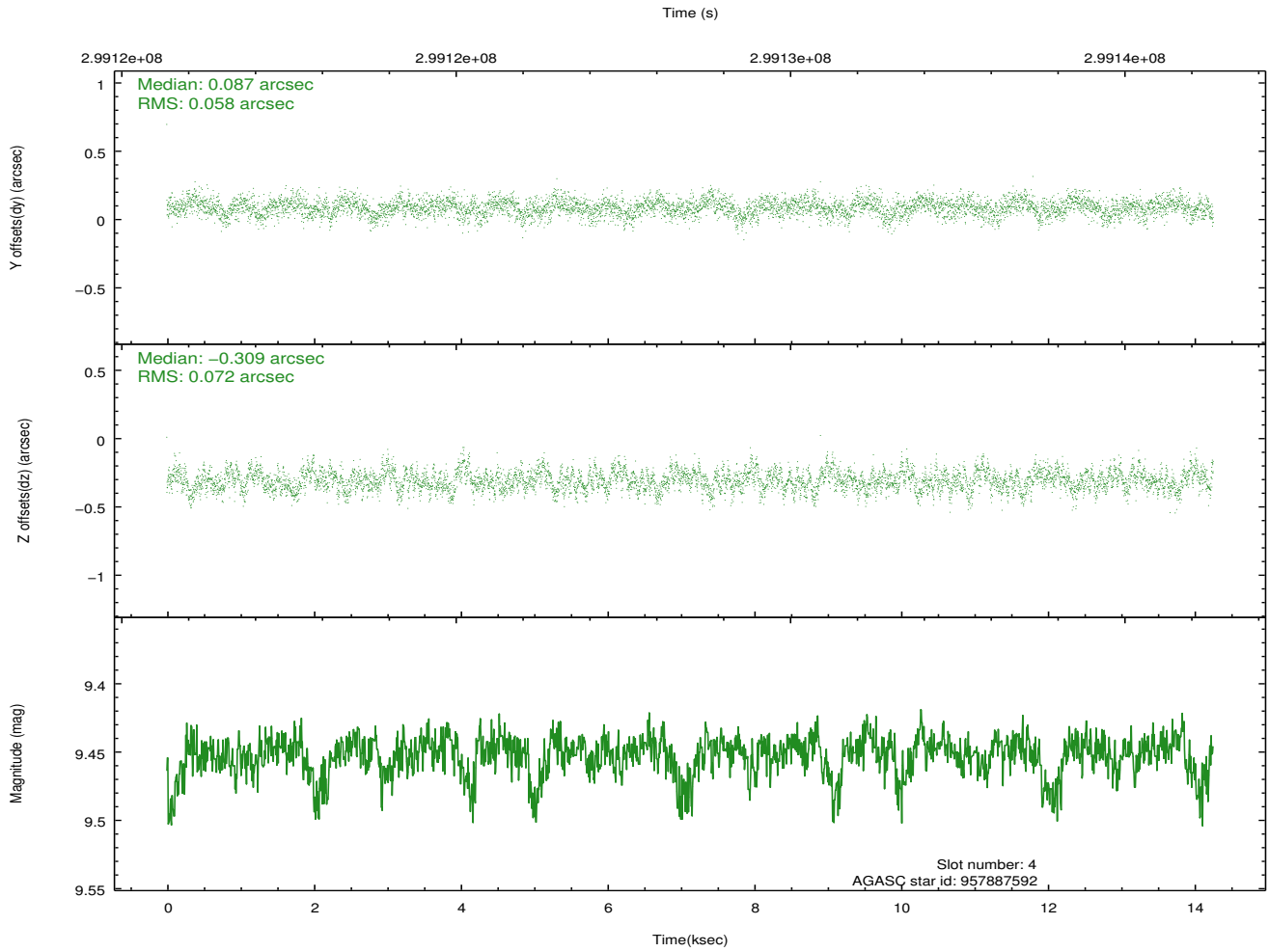
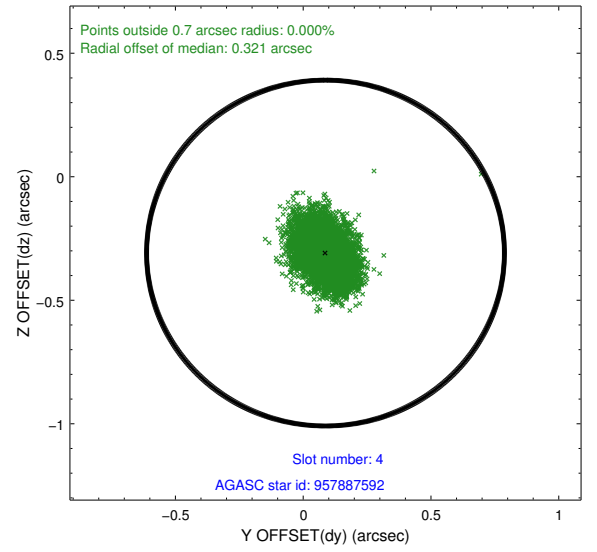
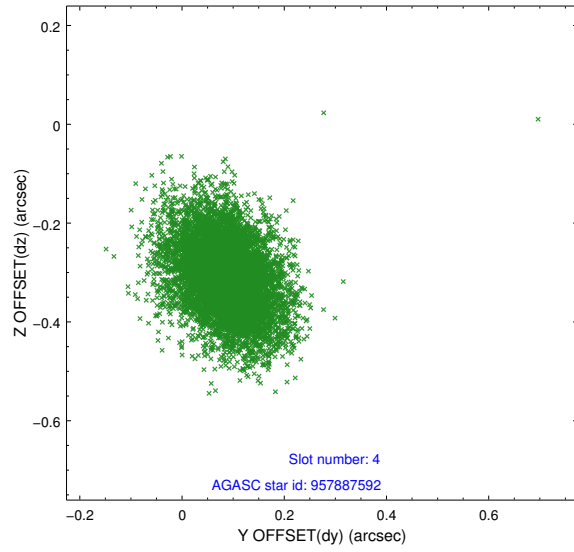
slot	status	id	mag	n_pts	med_dy	med_dz	dr1	dr2	ra	dec	mean_y	mean_z
0	FID	ACIS-S-2	7.09	3479	0.025	-0.052	0.006	0.011	0.000000	0.000000	-765.51	-1734.49
1	FID	ACIS-S-5	7.23	3478	-0.092	0.048	0.007	0.011	0.000000	0.000000	-1818.89	167.24
2	FID	ACIS-S-6	7.33	3479	0.041	0.013	0.006	0.010	0.000000	0.000000	395.76	811.48
3	GUIDE	957879416	9.67	6891	0.063	0.016	0.095	0.162	219.719227	-37.477881	1490.15	-1493.37
4	GUIDE	957887592	9.45	6946	0.087	-0.309	0.097	0.162	219.972917	-37.199574	500.96	-750.76
5	GUIDE	957888112	7.42	6956	-0.014	0.185	0.056	0.087	219.537334	-37.007934	-209.26	-1989.50
6	GUIDE	958011184	9.32	6949	0.001	0.022	0.081	0.135	220.690270	-36.766363	-1012.82	1346.50
7	GUIDE	958007680	8.66	6953	-0.135	0.085	0.062	0.103	220.882230	-36.413093	-2269.50	1936.00

## 2.4 Star Slots

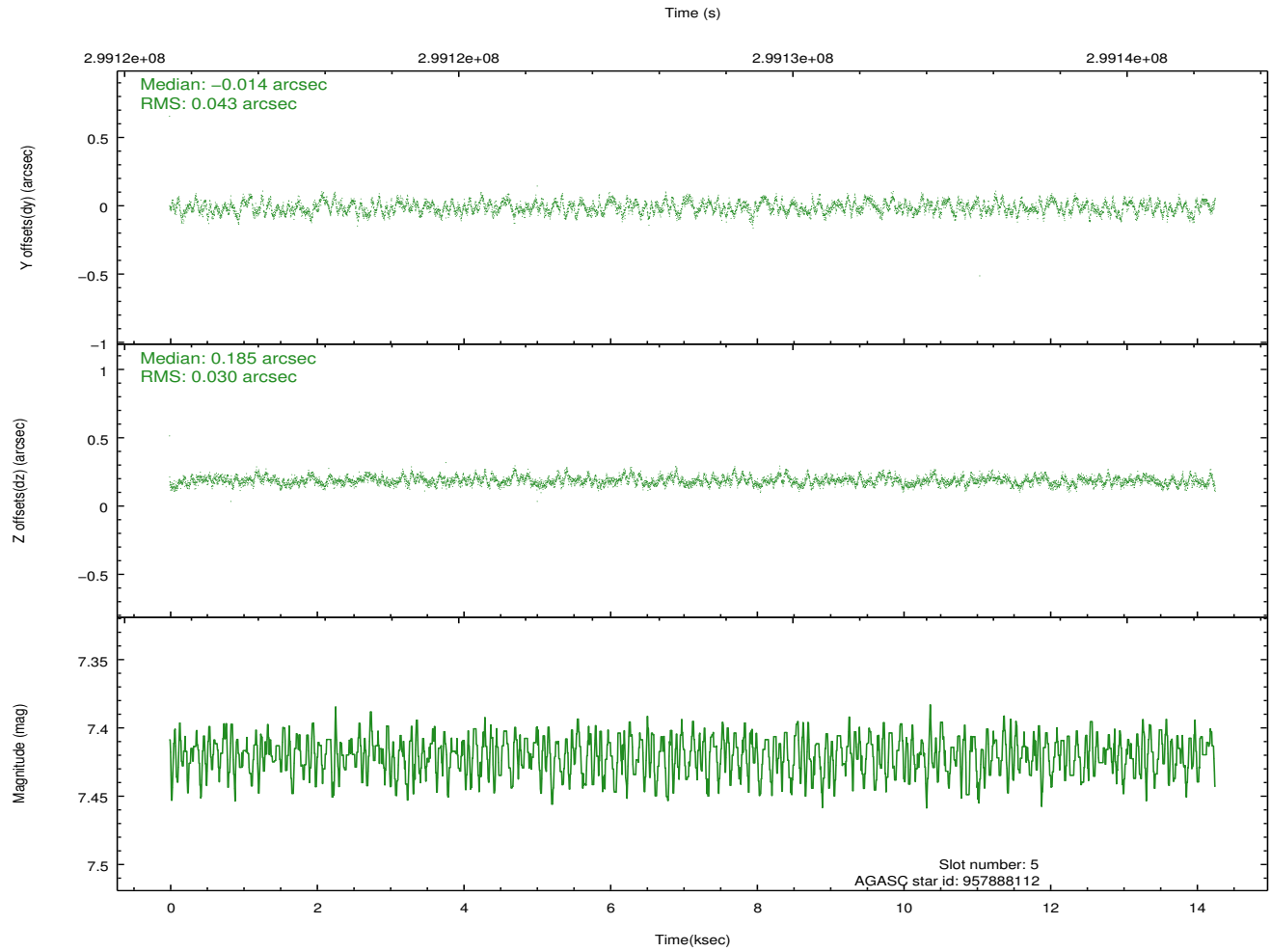
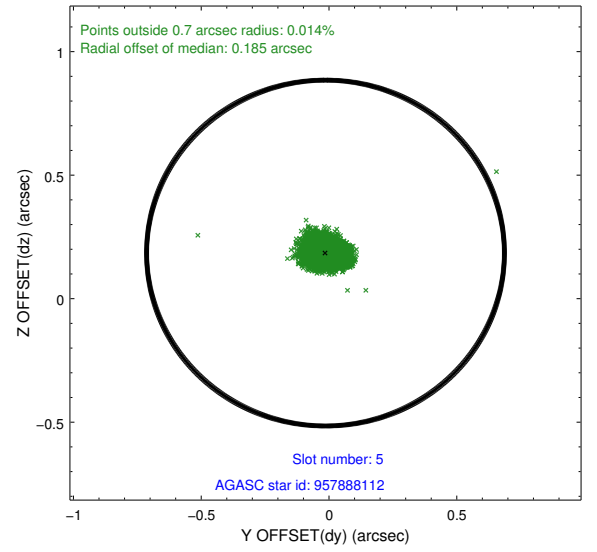
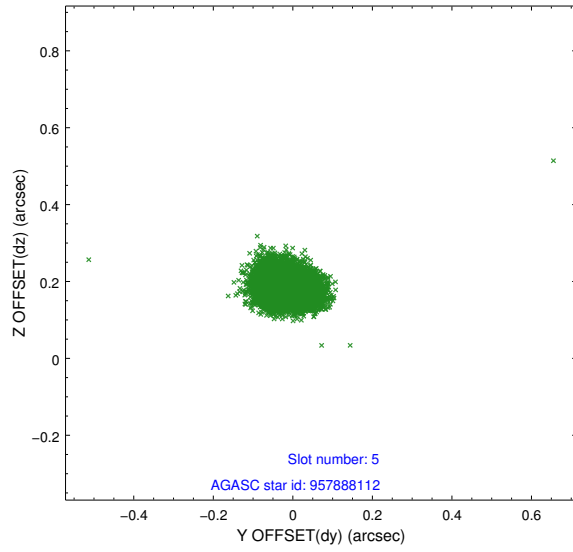
### 2.4.1 Slot 3



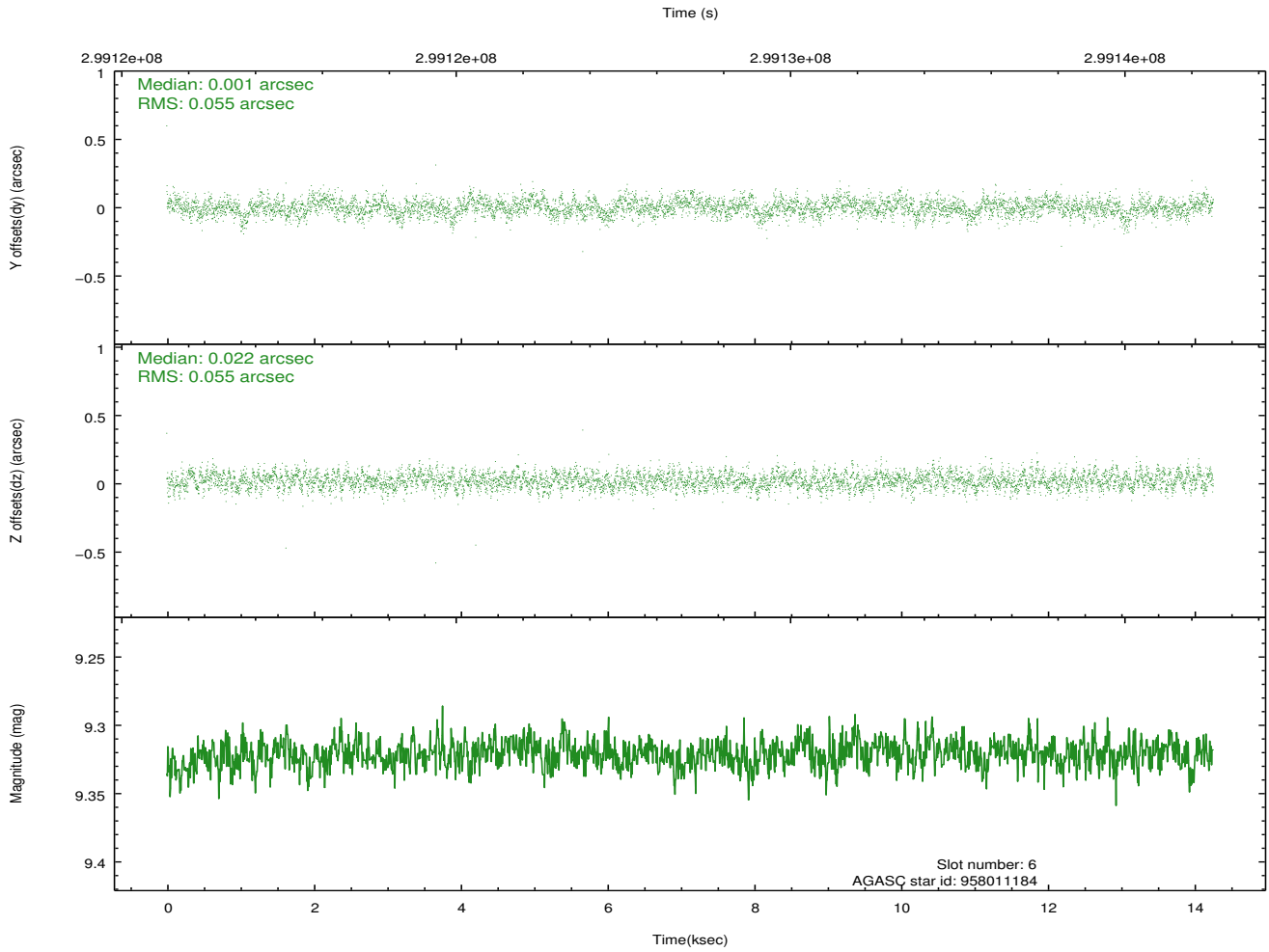
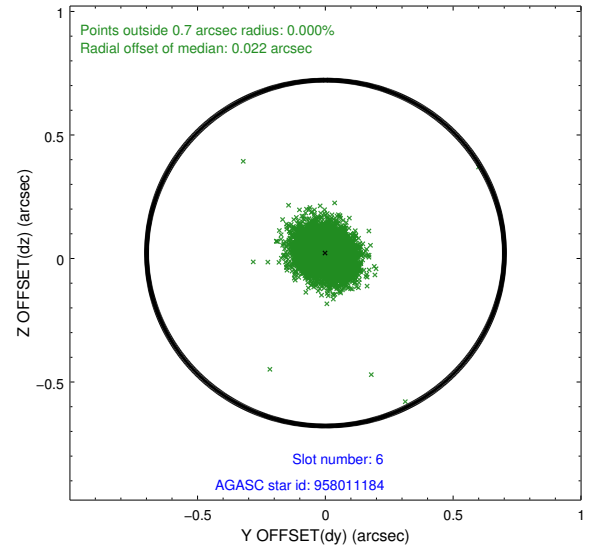
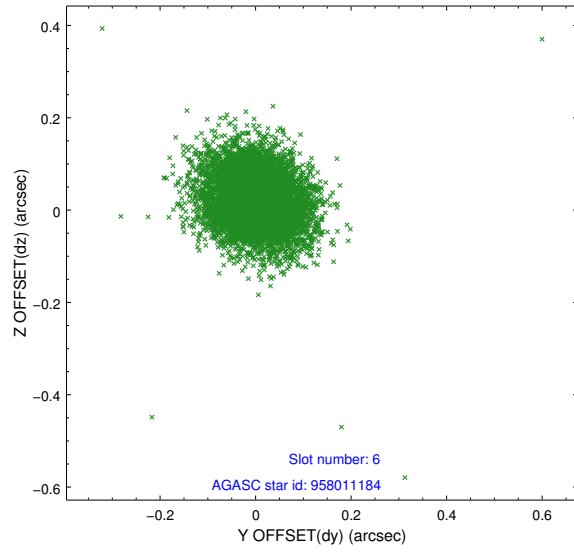
## 2.4.2 Slot 4



### 2.4.3 Slot 5

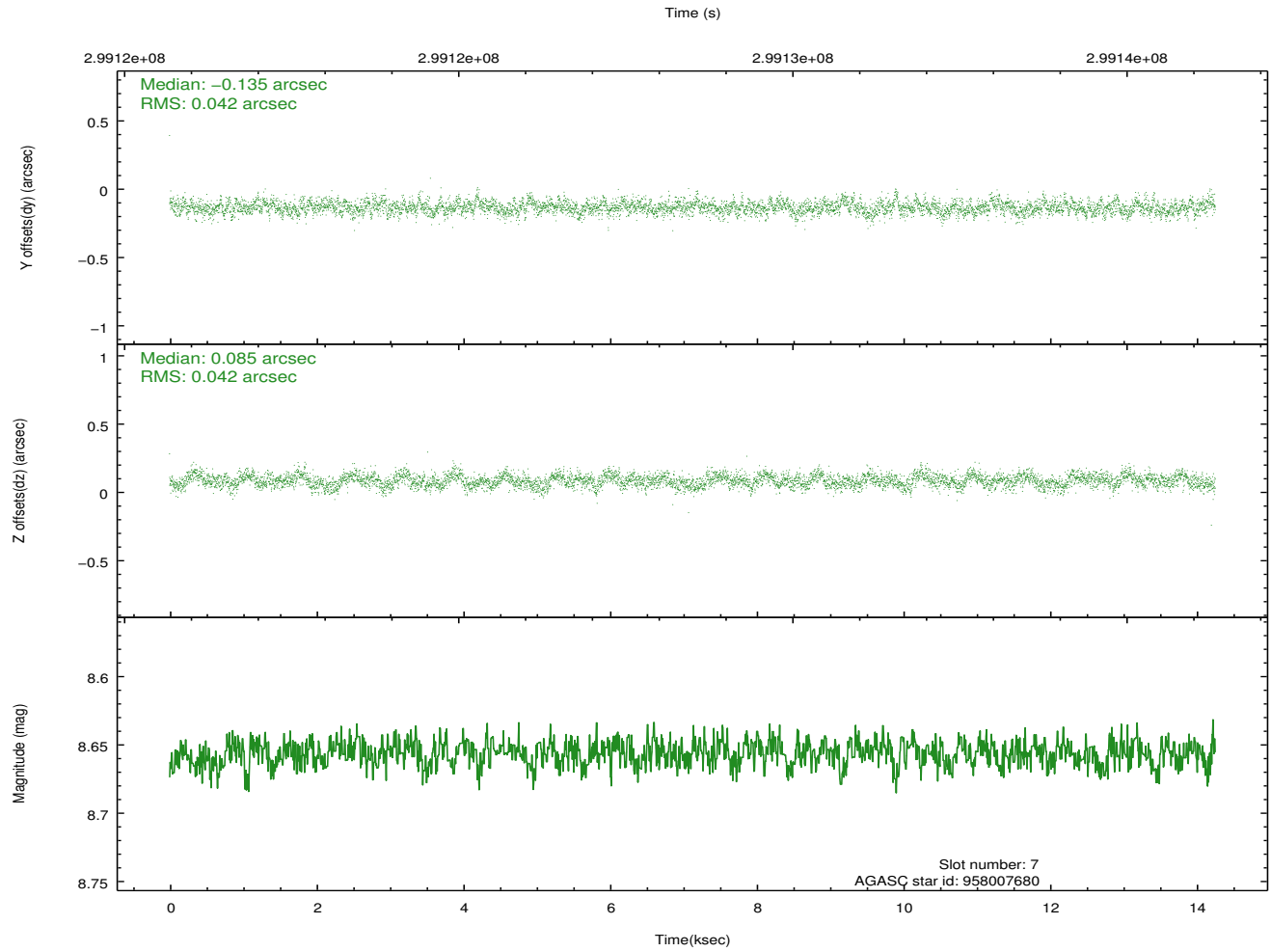
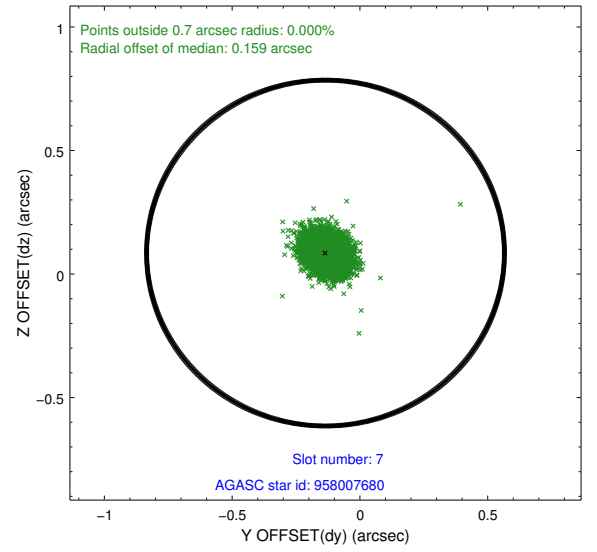
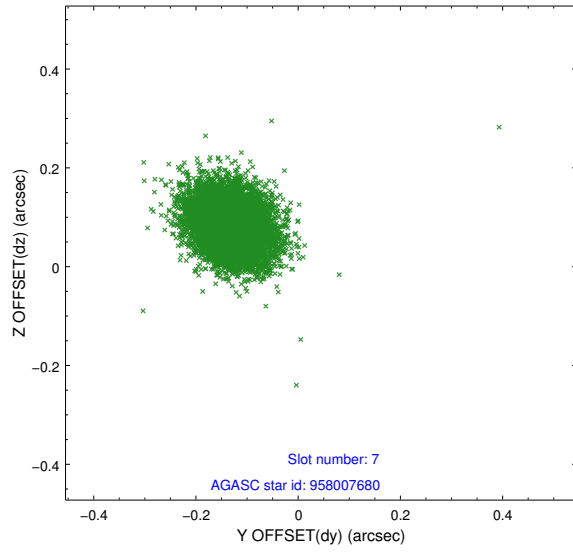


## 2.4.4 Slot 6



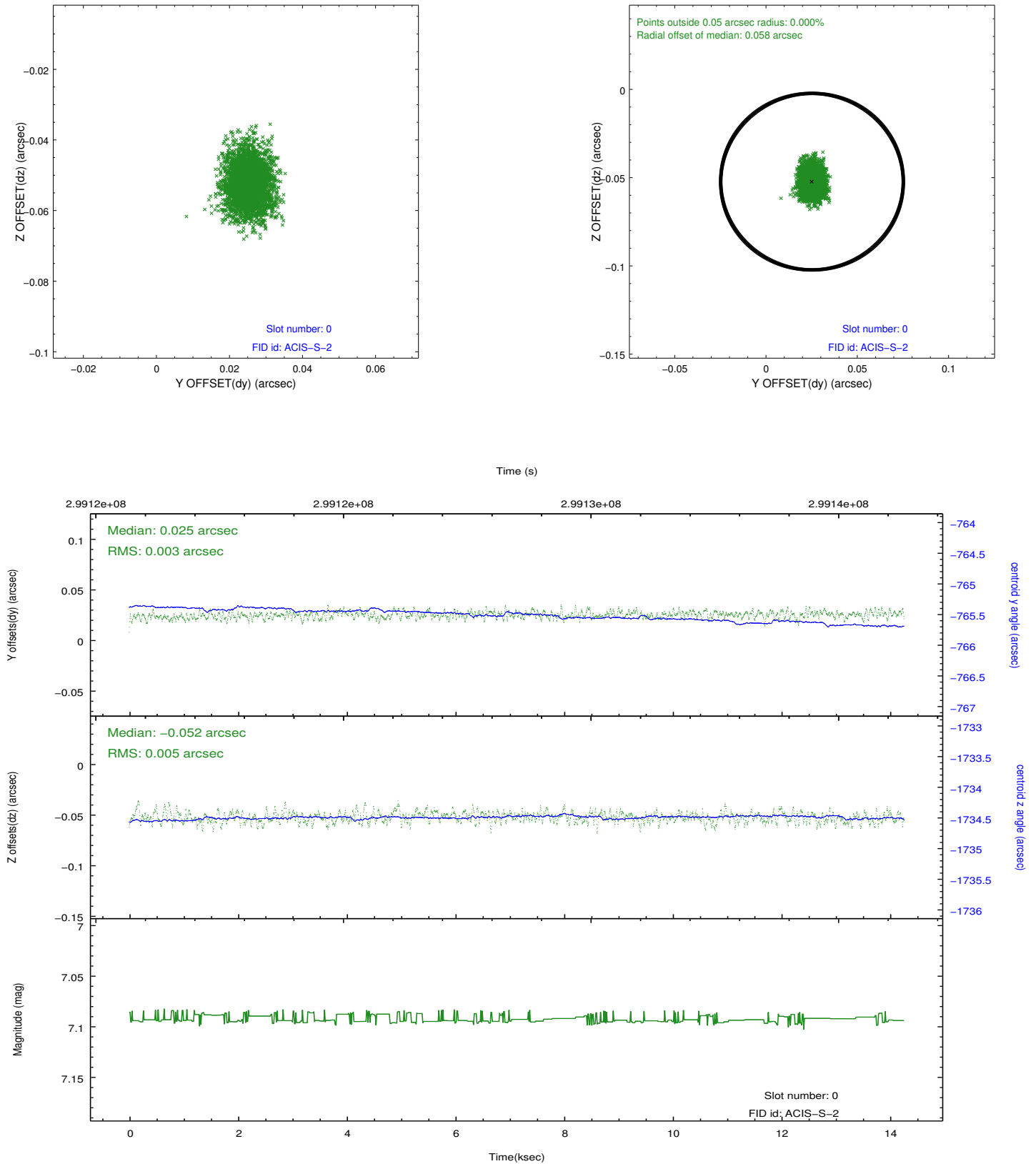


## 2.4.5 Slot 7

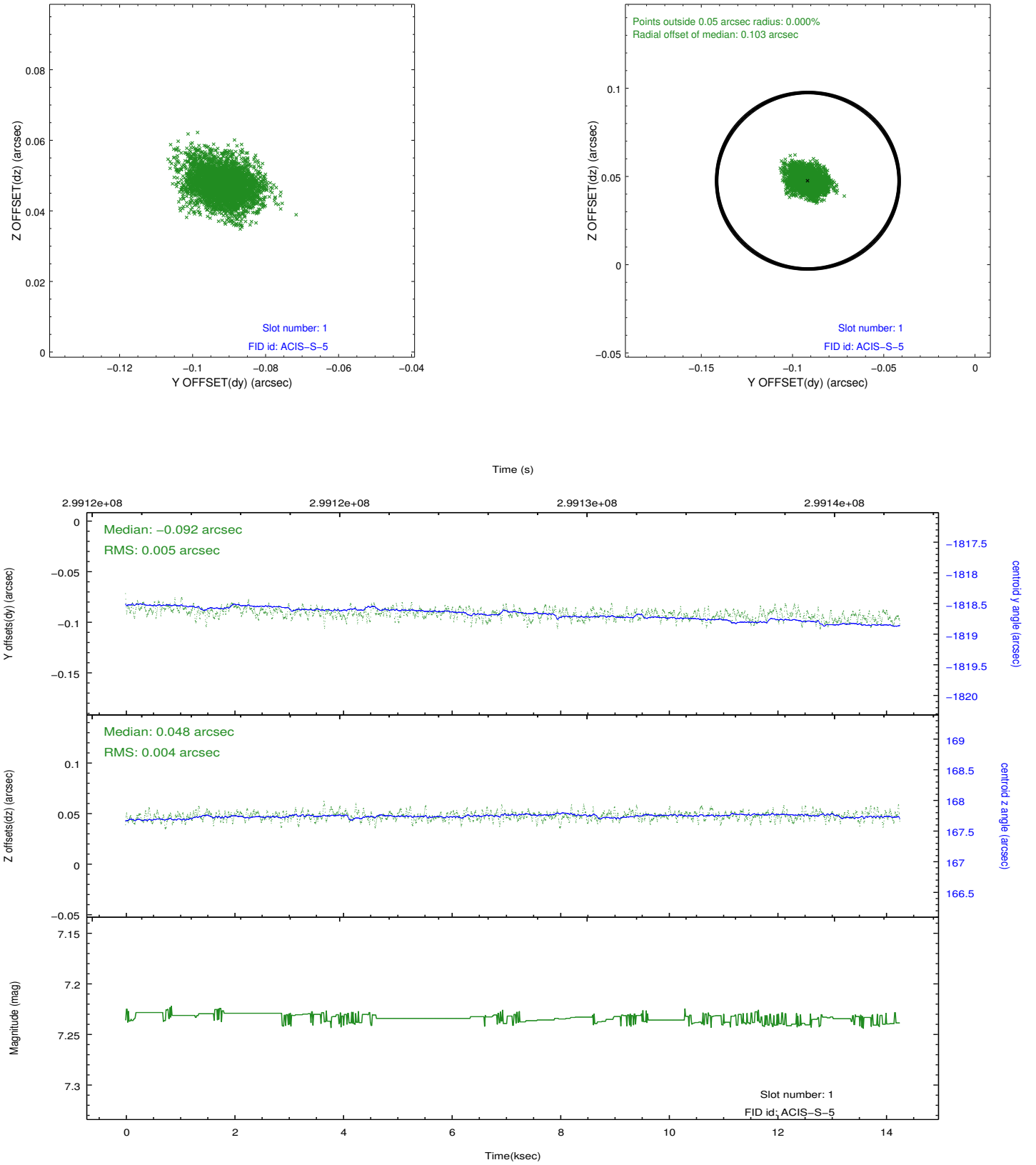


## 2.5 FID Slots

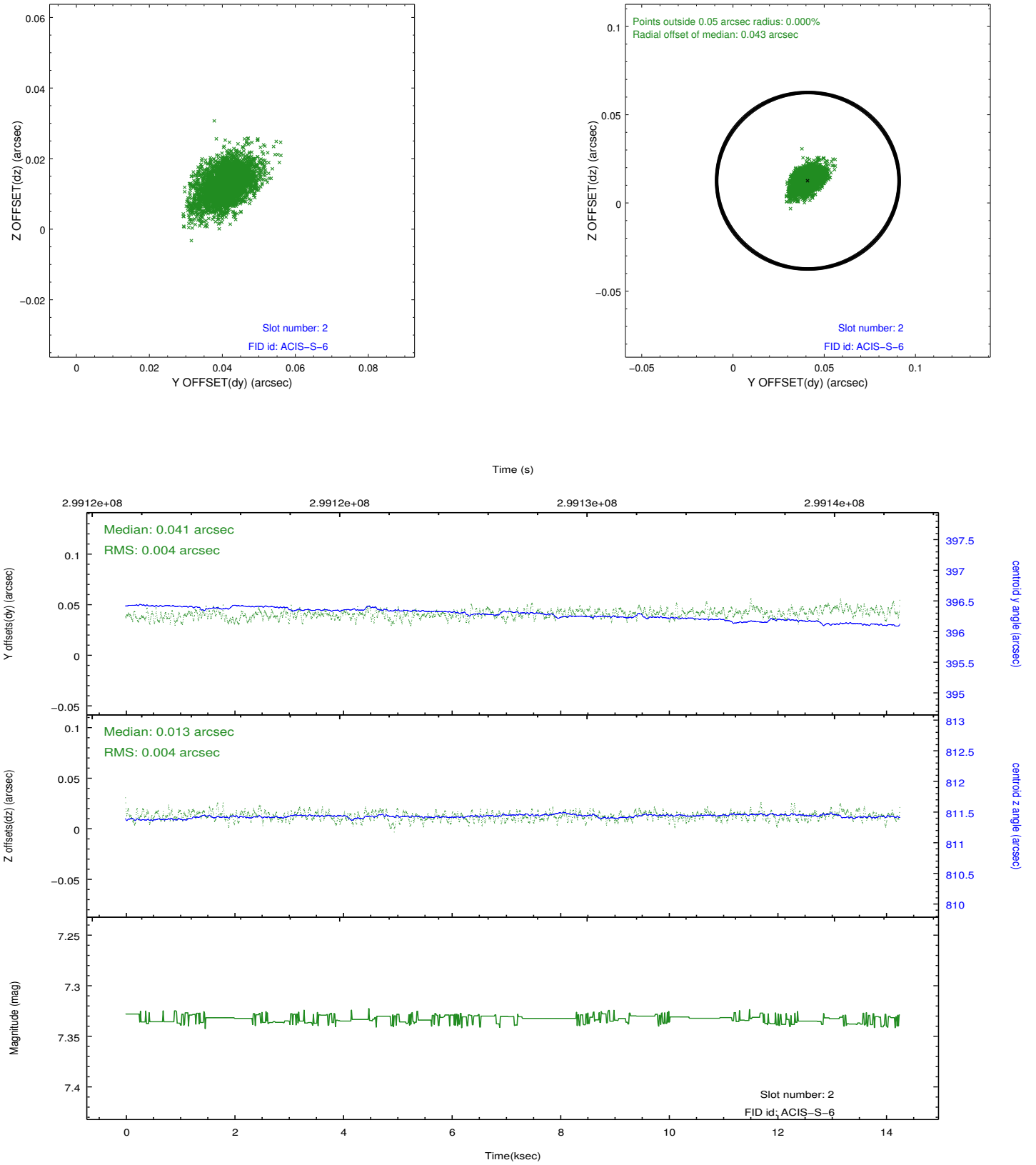
### 2.5.1 Slot 0



## 2.5.2 Slot 1



### 2.5.3 Slot 2



## A Summary

### A.1 Status

V&V Scientist	Joy Nichols
V&V Date (YYYY-MM-DD)	2012.04.27
V&V Edition	1
V&V Disposition and Status	OK
V&V Charge Time	14.0415999

### A.2 Comments