

V&V Reference Report

L2 ASCDS Version : 8.4.4

Observation 7883 - L2 Version 3
Chandra X-Ray Center

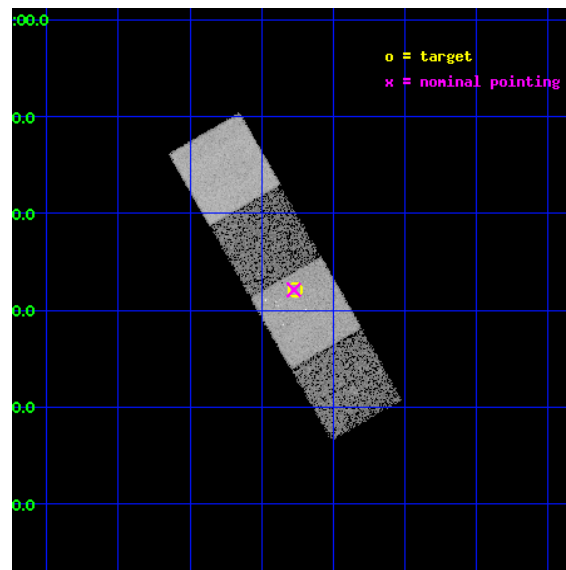
L2 Processing Date : Apr 18 2012

Contents

1	Front	2
2	OBI	3
2.1	OBI	3
2.1.1	Images	3
2.1.2	Bias	3
2.1.3	Parameters	4
2.1.4	Events	4
2.2	Compared Parameters	5
2.3	Aspect	6
2.4	Star Slots	9
2.4.1	Slot 3	9
2.4.2	Slot 4	10
2.4.3	Slot 5	11
2.4.4	Slot 6	12
2.4.5	Slot 7	13
2.5	FID Slots	14
2.5.1	Slot 0	14
2.5.2	Slot 1	15
2.5.3	Slot 2	16
A	Summary	17
A.1	Status	17
A.2	Comments	17

1 Front

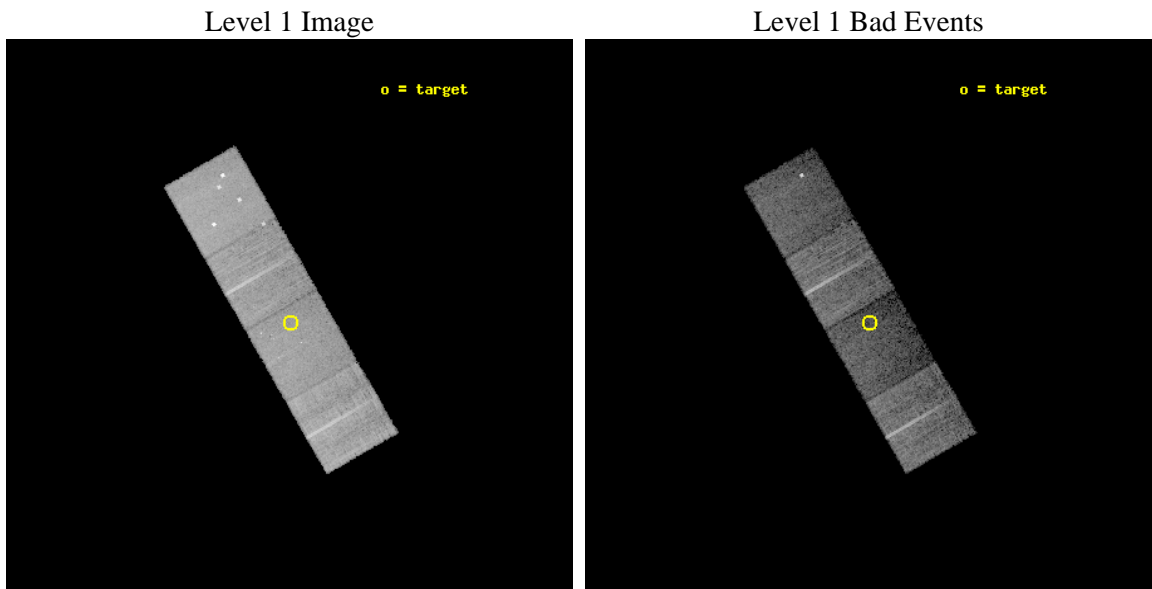
seq_num	701546	Sequence number
obs_id	7883	Observation id
title	Probing heavy obscuration in optically selected Type 2 quasar candidates	Proposal title
observer	Dr Cristian Vignali	Principal investigator
object	SDSS J102746.03+003205.0	Source name
dtcycle	0	
cycle	P	events from which exps? Prim/Second/Both
ra_targ	156.941667	Observer's specified target RA [deg]
dec_targ	0.534722	Observer's specified target Dec [deg]
ra_nom	156.94372082683	Nominal RA [deg]
dec_nom	0.53508728098653	Nominal Dec [deg]
roll_nom	60.125228403236	Nominal Roll [deg]
revision	3	Processing version of data
ontime	10044.000077248	Sum of GTIs [s]
livetime	9912.7678219531	Livetime [s]
ontime5	10044.000077248	Sum of GTIs [s]
ontime6	10044.000077248	Sum of GTIs [s]
ontime7	10044.000077248	Sum of GTIs [s]
ontime8	10044.000077248	Sum of GTIs [s]
l2events	92978	Number of level 2 events



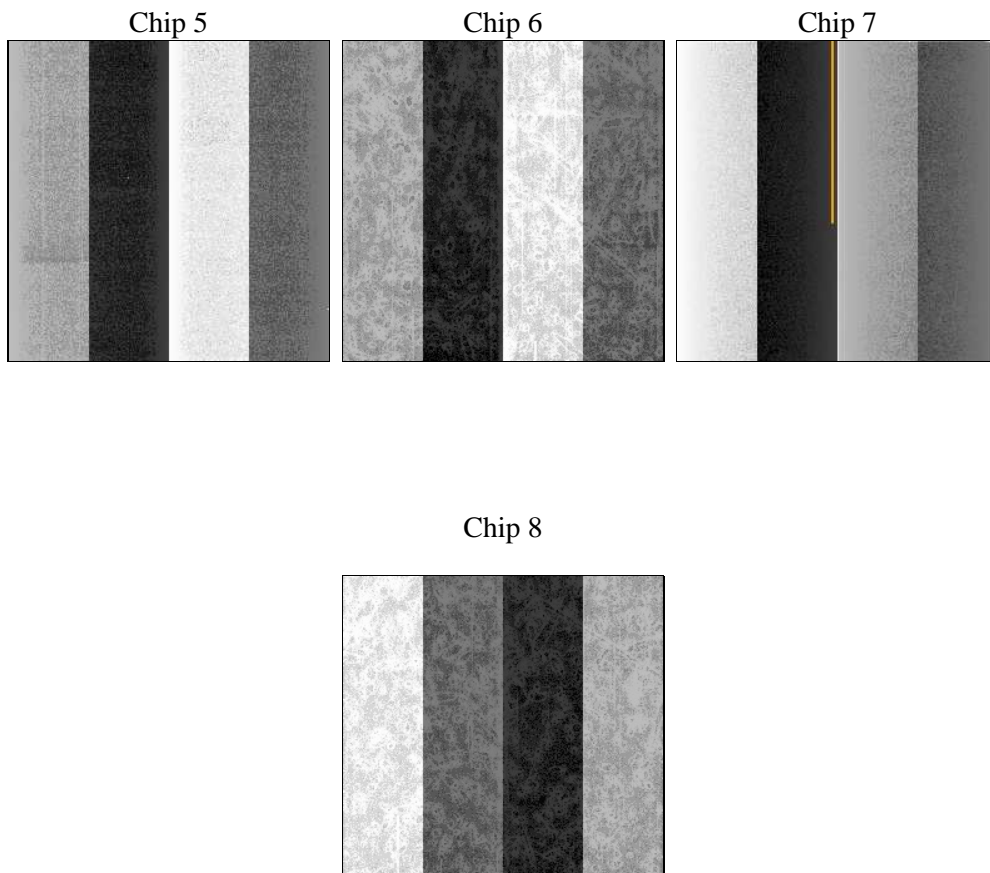
2 OBI

2.1 OBI

2.1.1 Images



2.1.2 Bias



2.1.3 Parameters

obi_num	0	Obi number	sched_exp_time	10000.000000	[s] Scheduled observation exposure time
ascdsver	8.4.4	Processing system revision	ontime	10044.000077248	Sum of GTIs [s]
caldsver	4.4.9	 	ontime5	10044.000077248	Sum of GTIs [s]
date	2012-04-18T12:14:26	Date and time of file creation	ontime6	10044.000077248	Sum of GTIs [s]
revision	3	Processing version of data	ontime7	10044.000077248	Sum of GTIs [s]
			ontime8	10044.000077248	Sum of GTIs [s]
			l1events	331436	Number of level 1 events

2.1.4 Events

	ccd 5	ccd 6	ccd 7	ccd 8
level 1 events	97546	73554	70148	90188
rejected events	43425	66004	35036	67986
rejected %	44%	89%	49%	75%

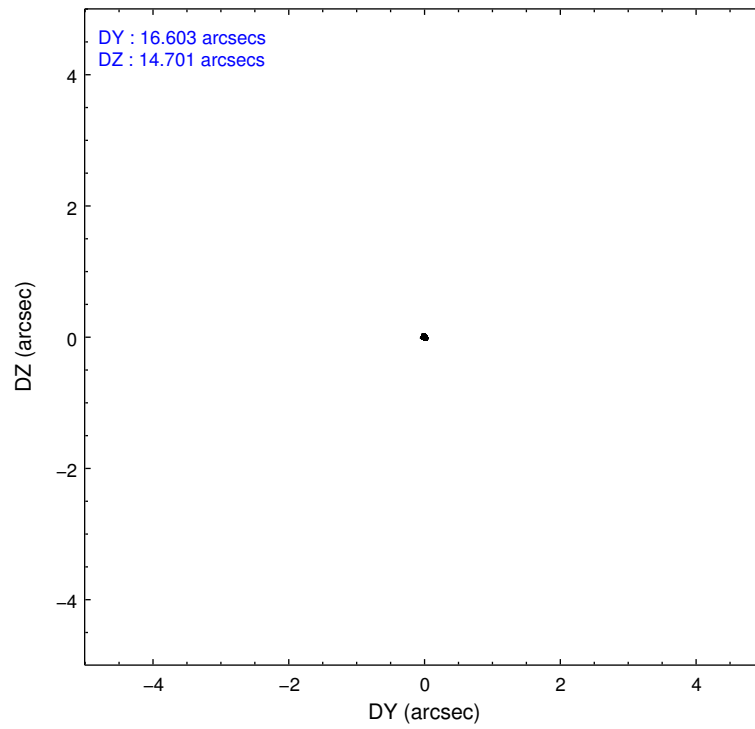
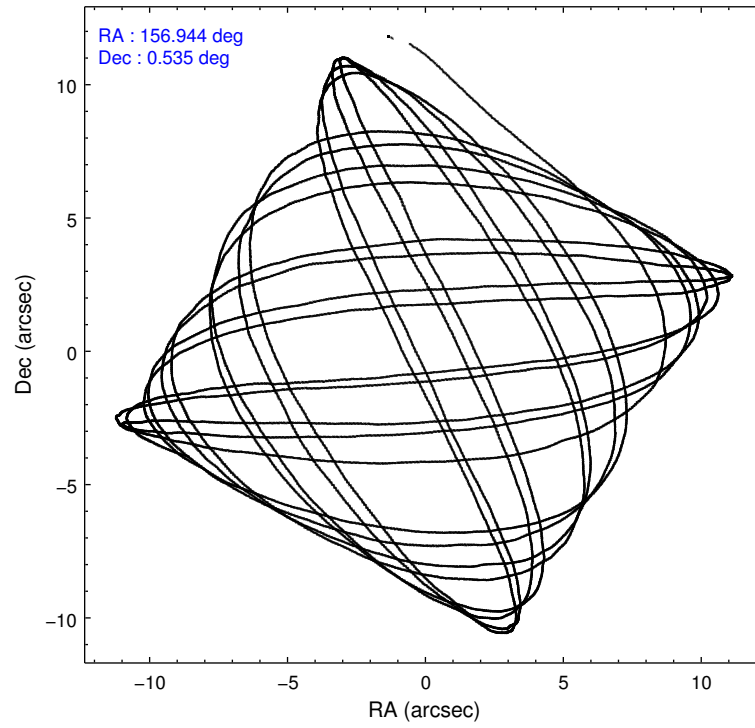
	ccd 5	ccd 6	ccd 7	ccd 8
grade 0 events	10019	2721	3687	6533
	10%	3%	5%	7%
grade 1 events	731	35	122	69
	0%	0%	0%	0%
grade 2 events	15150	1658	7268	5012
	15%	2%	10%	5%
grade 3 events	2322	806	3370	2446
	2%	1%	4%	2%
grade 4 events	2106	853	3365	2337
	2%	1%	4%	2%
grade 5 events	7558	2568	7227	3638
	7%	3%	10%	4%
grade 6 events	24544	1512	17431	5877
	25%	2%	24%	6%
grade 7 events	35116	63401	27678	64276
	35%	86%	39%	71%

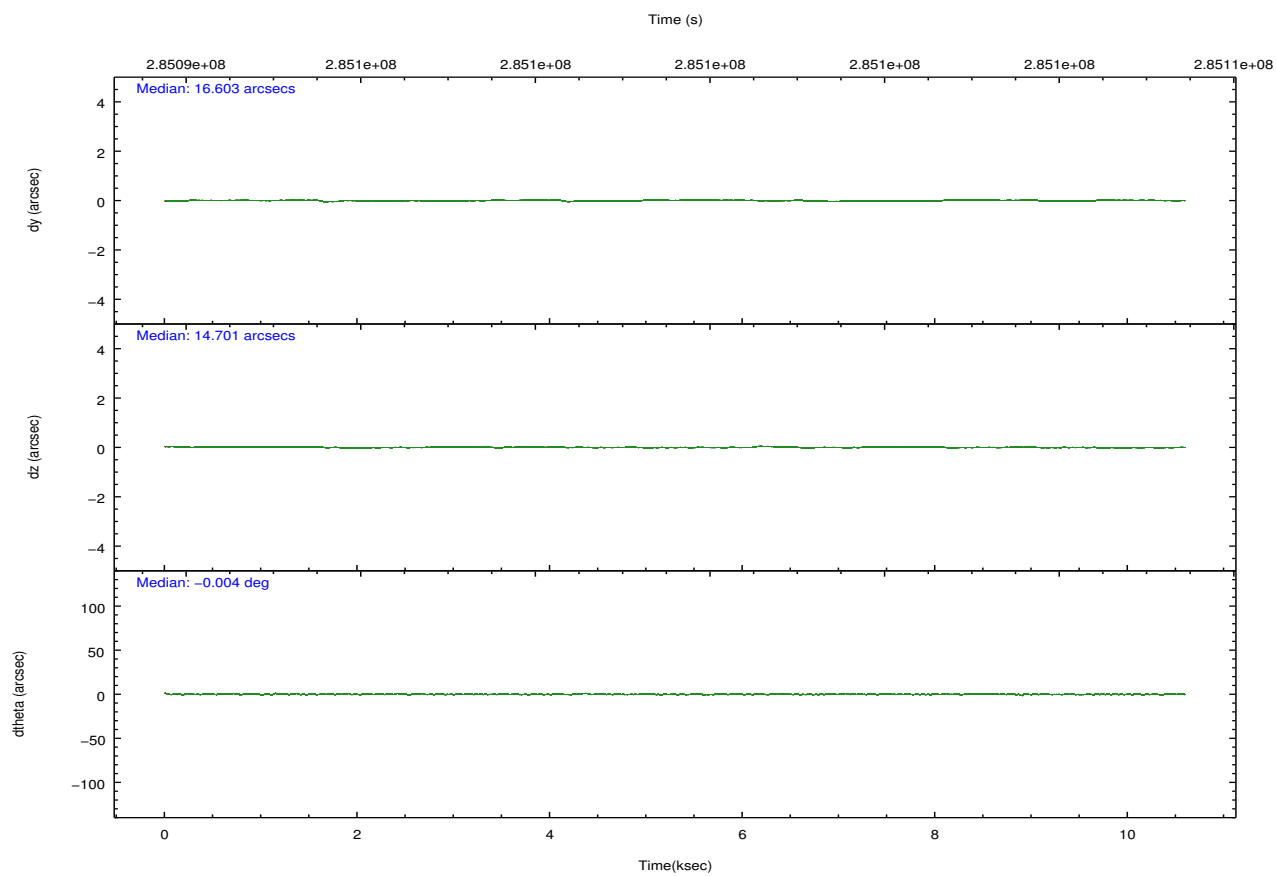
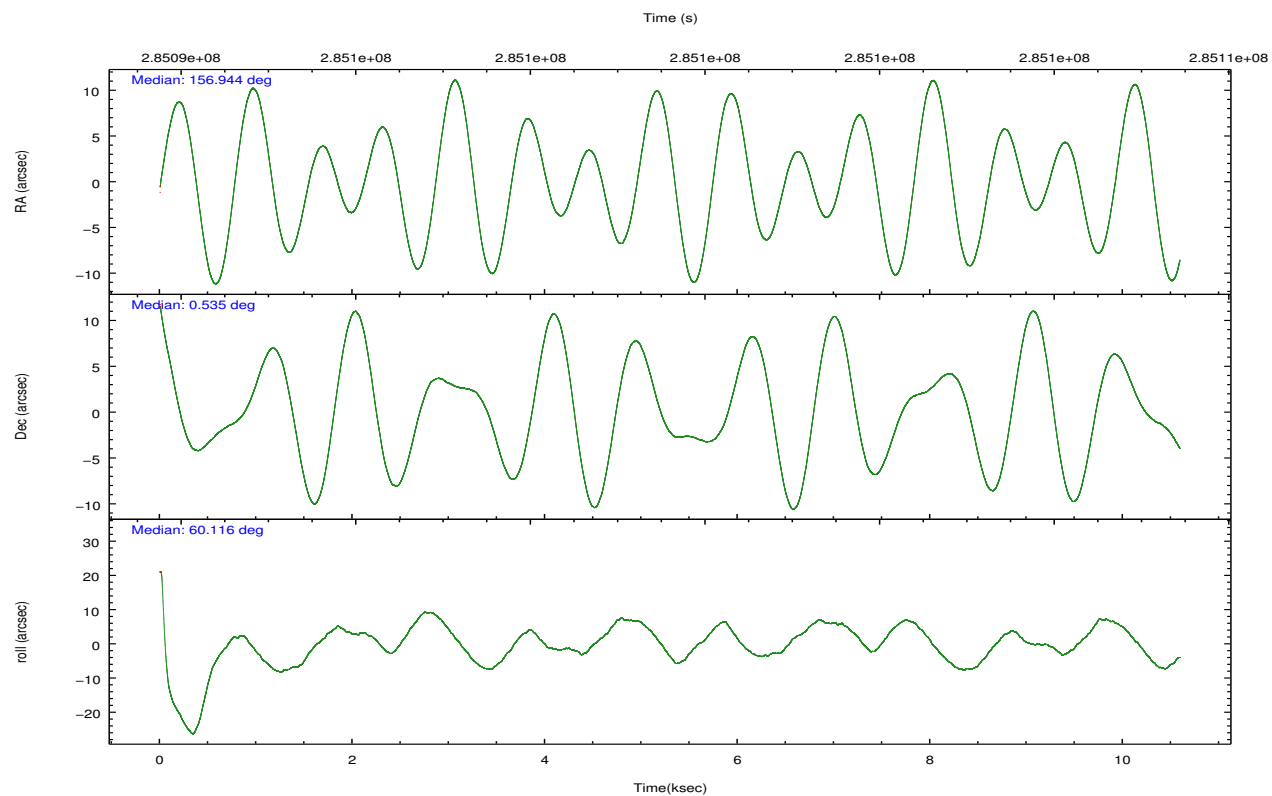
2.2 Compared Parameters

Parameter	Planned	Actual
Instrument	ACIS	ACIS
Detector	ACIS-5678	ACIS-5678
Grating	NONE	NONE
Data mode	VFAINT	VFAINT
Observation mode	POINTING	POINTING
[deg] Pointing RA	156.944166	156.9437208268273
[deg] Pointing Dec	0.507738	0.5350872809865324
[deg] Pointing Roll	59.968545	60.12522840323601
[mm] SIM focus pos	-0.684267	-0.6828225247311905
[mm] SIM defocus	0	0.001444936568705701
[mm] SIM translation stage pos	-190.132523	-190.1425803651734
[mm] SIM translation stage offset	0	0.01005778216563158
[s] Observation start time (MET)	285094904.184000	285093832.85706
Observation start date	2007-01-13T17:00:39	2007-01-13T16:43:52
[s] Observation end time (MET)	285104904.184000	285105667.50762
Observation end date	2007-01-13T19:47:19	2007-01-13T20:01:07
Read mode	TIMED	TIMED

Parameter	Planned	Actual
Obspar format version number	7	7
Obspar file type	PREDICTED	ACTUAL
Obspar update status	NONE	UPDATED
Number of optional ACIS chips dropped	0	0
On-chip summing requested	N	N
Subarray requested	NONE	NONE
Alternating exposures requested	N	N
[s] Primary exposure time	0.000000	3.1

2.3 Aspect



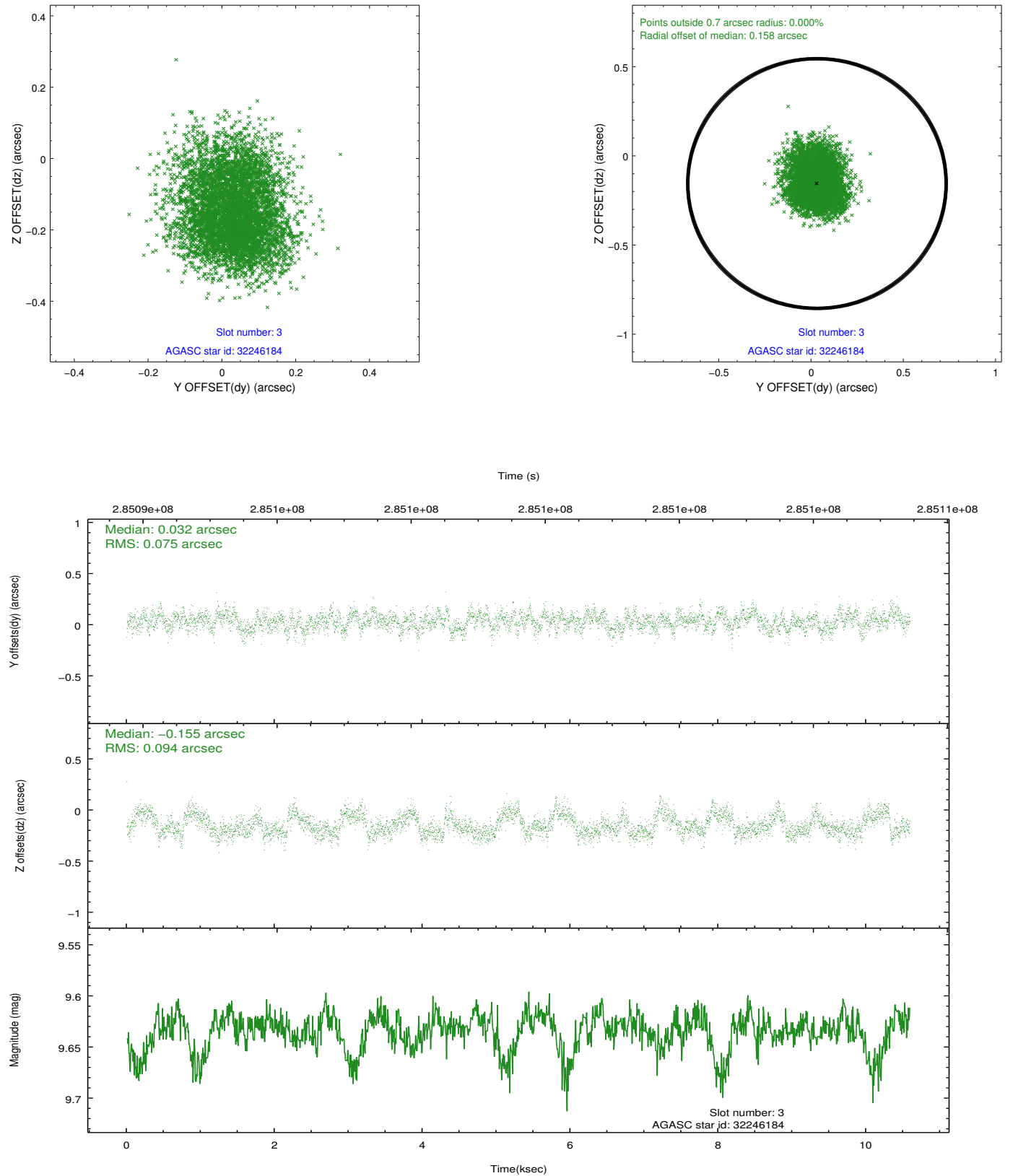


Slot Statistics

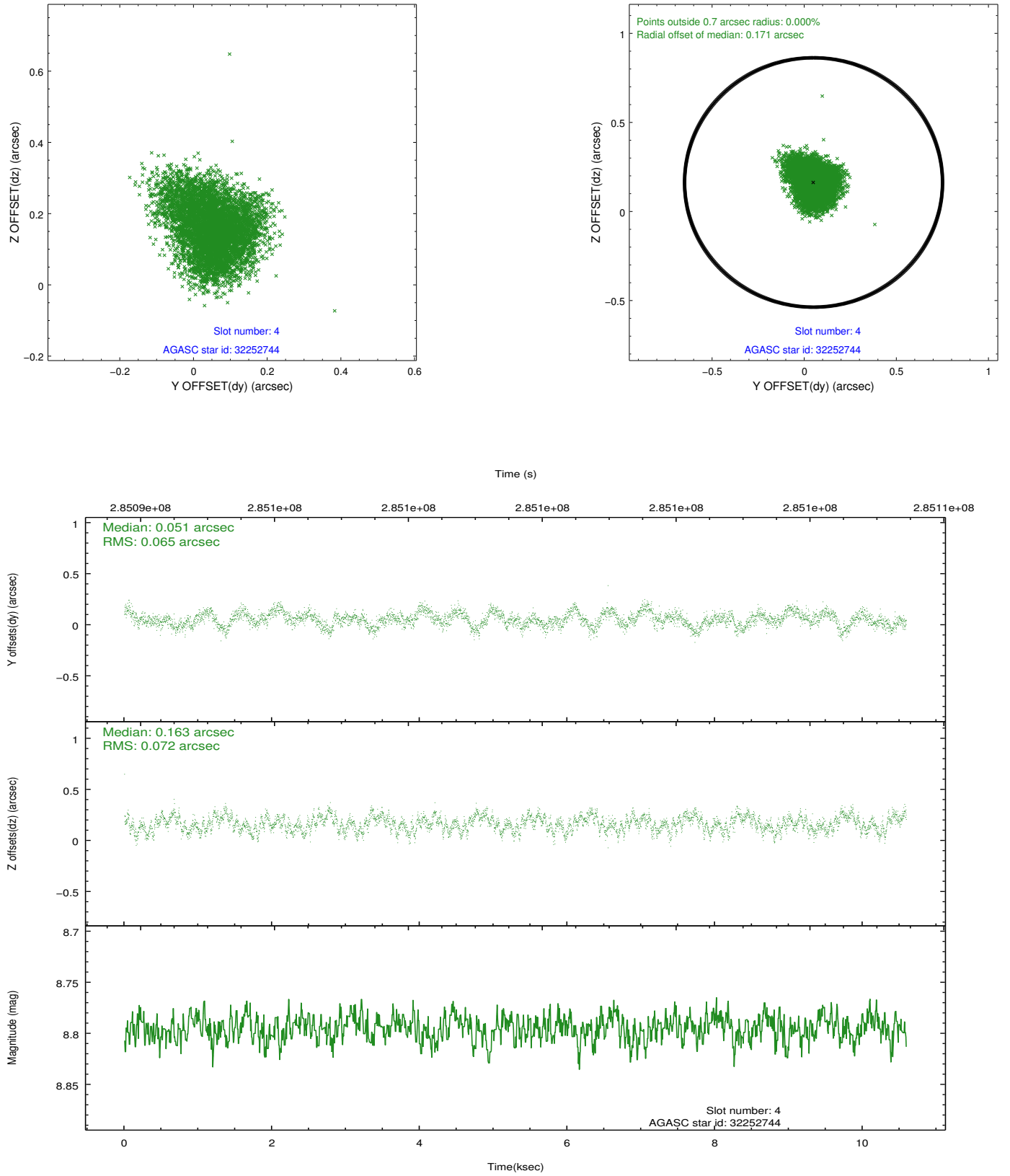
slot	status	id	mag	n_pts	med_dy	med_dz	dr1	dr2	ra	dec	mean_y	mean_z
0	FID	ACIS-S-2	7.09	2584	-0.099	-0.039	0.006	0.010	0.000000	0.000000	-769.70	-1736.07
1	FID	ACIS-S-4	7.20	2584	0.208	0.058	0.005	0.009	0.000000	0.000000	2143.64	172.02
2	FID	ACIS-S-5	7.23	2584	-0.140	-0.010	0.006	0.010	0.000000	0.000000	-1821.97	166.16
3	GUIDE	32246184	9.63	5163	0.032	-0.155	0.129	0.207	156.779352	1.052593	1401.06	1495.45
4	GUIDE	32252744	8.79	5162	0.051	0.163	0.105	0.163	157.130609	0.524536	388.61	-550.44
5	GUIDE	32253064	9.61	5162	0.044	-0.126	0.119	0.190	156.708276	0.875867	722.43	1398.70
6	GUIDE	32253520	9.03	5162	-0.122	0.042	0.093	0.145	156.764639	0.791339	560.71	1070.75
7	GUIDE	33169496	10.16	5162	0.011	0.069	0.197	0.347	157.726762	0.801002	2324.96	-1909.93

2.4 Star Slots

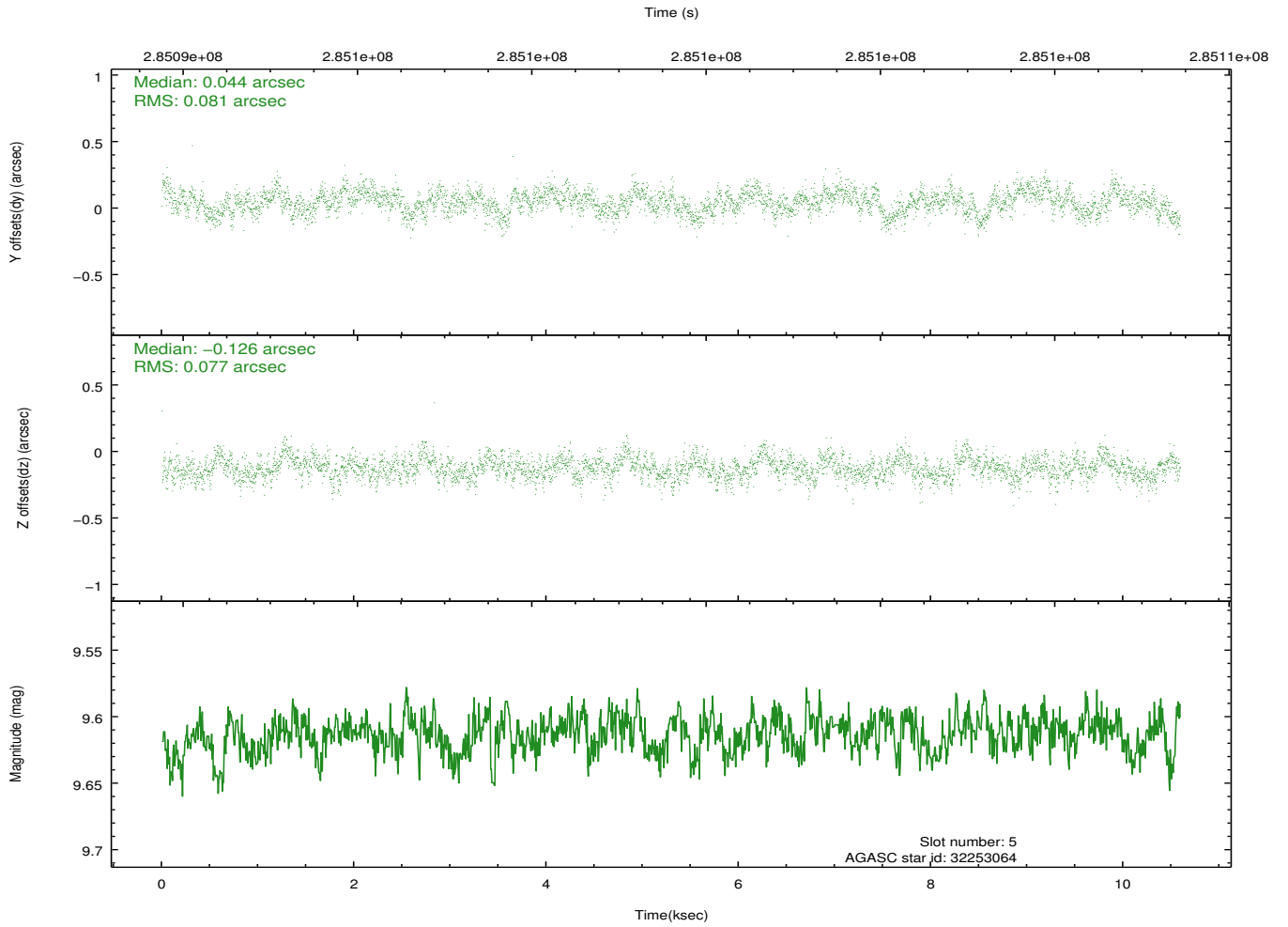
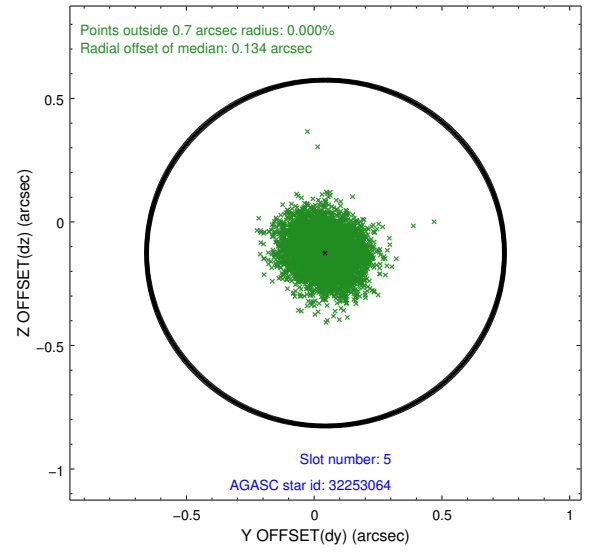
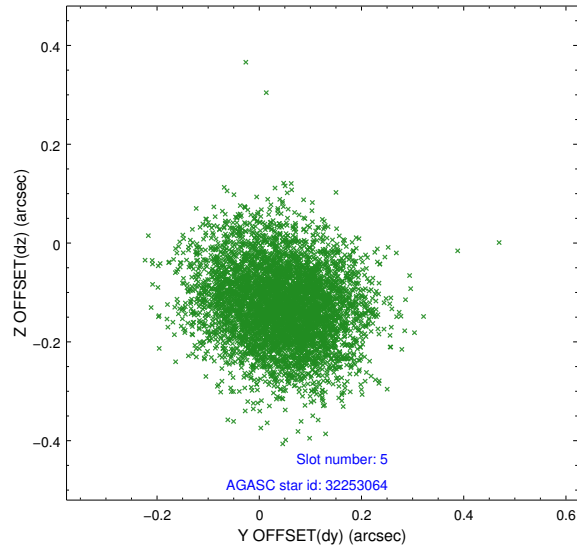
2.4.1 Slot 3



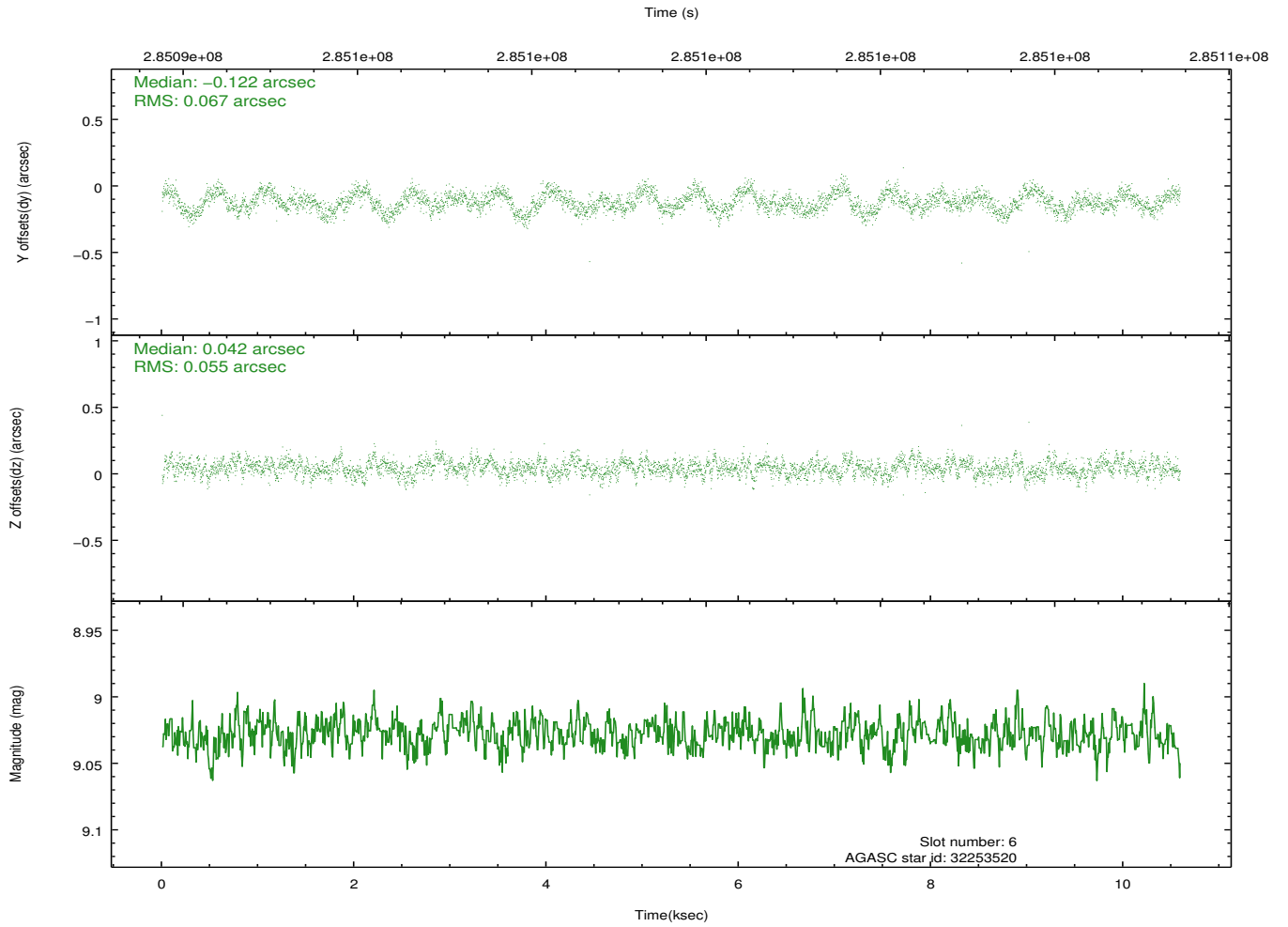
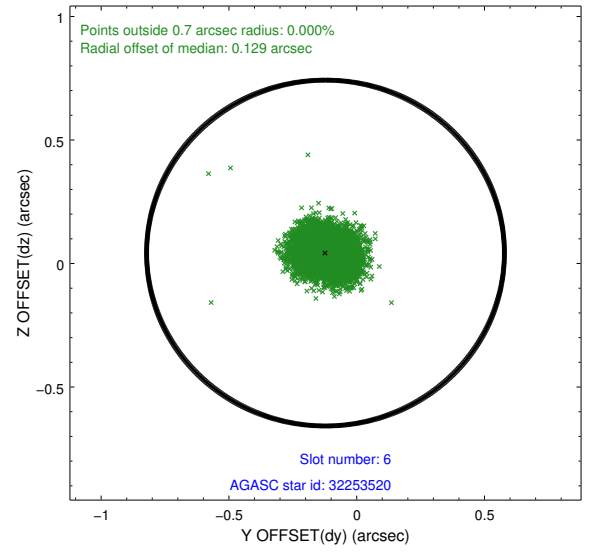
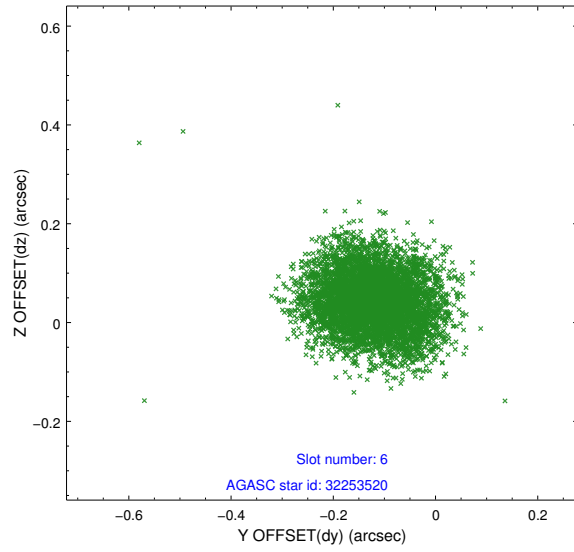
2.4.2 Slot 4



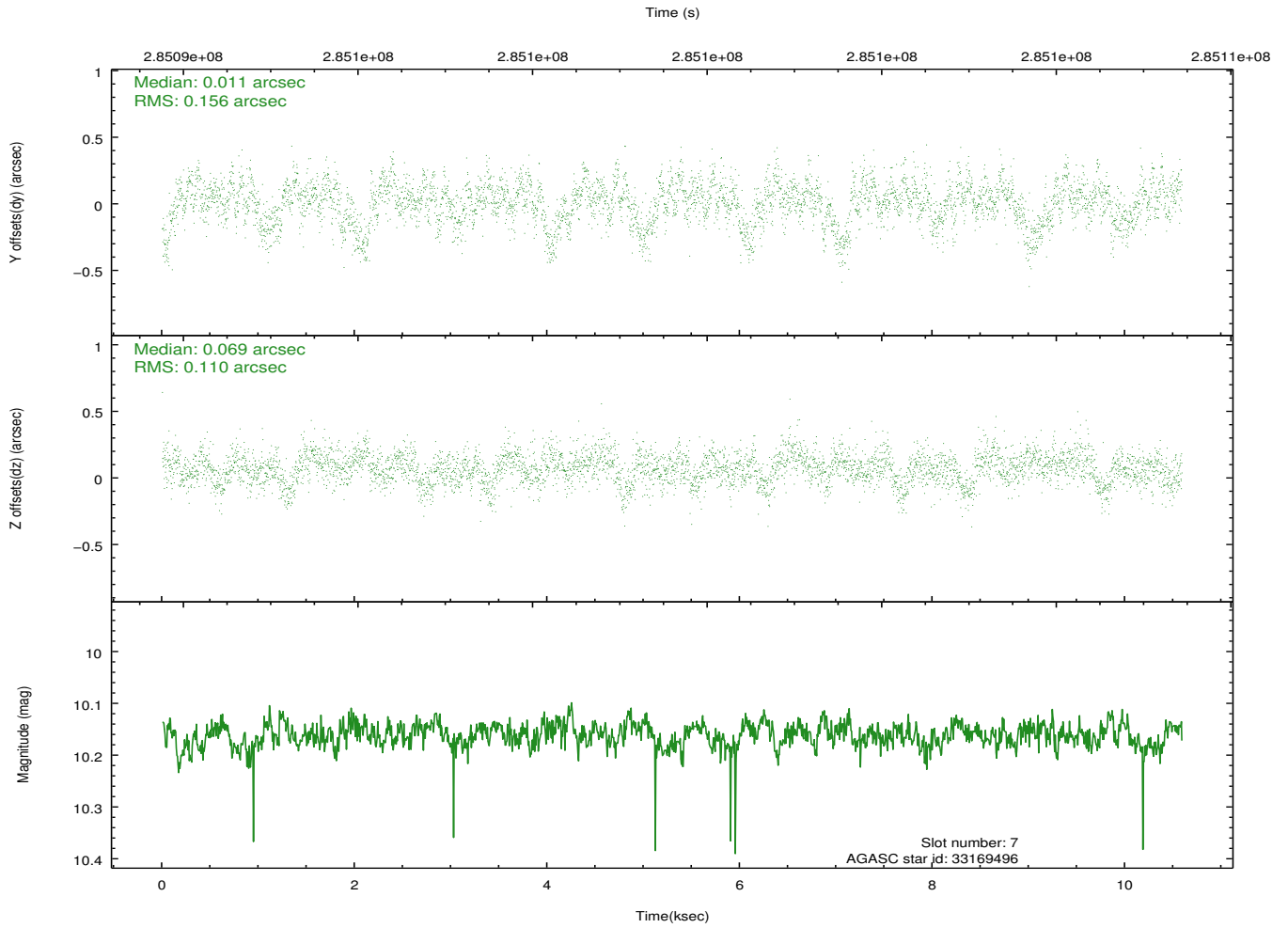
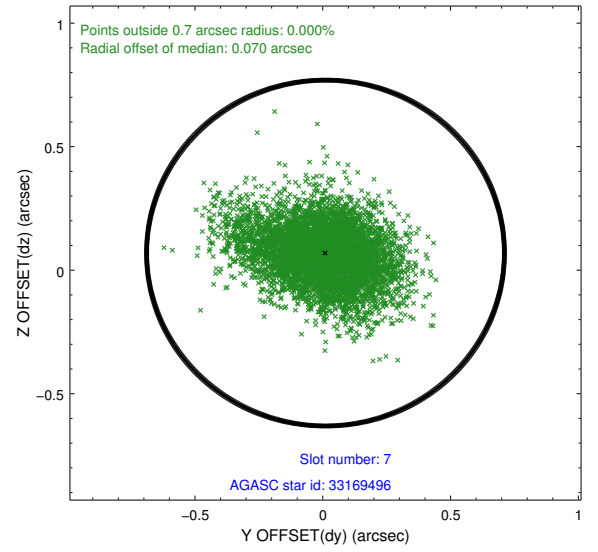
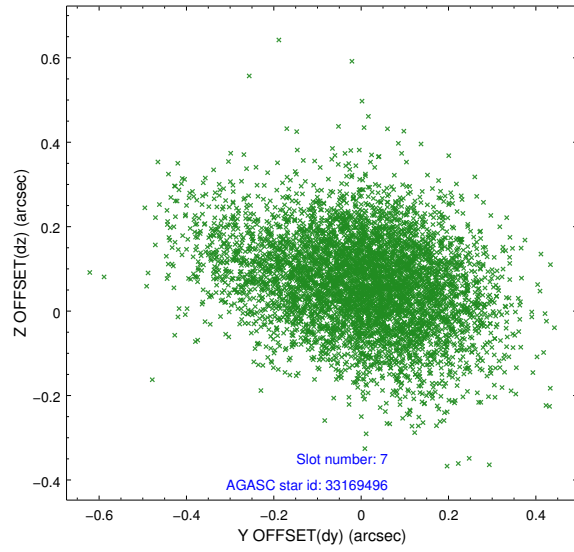
2.4.3 Slot 5



2.4.4 Slot 6

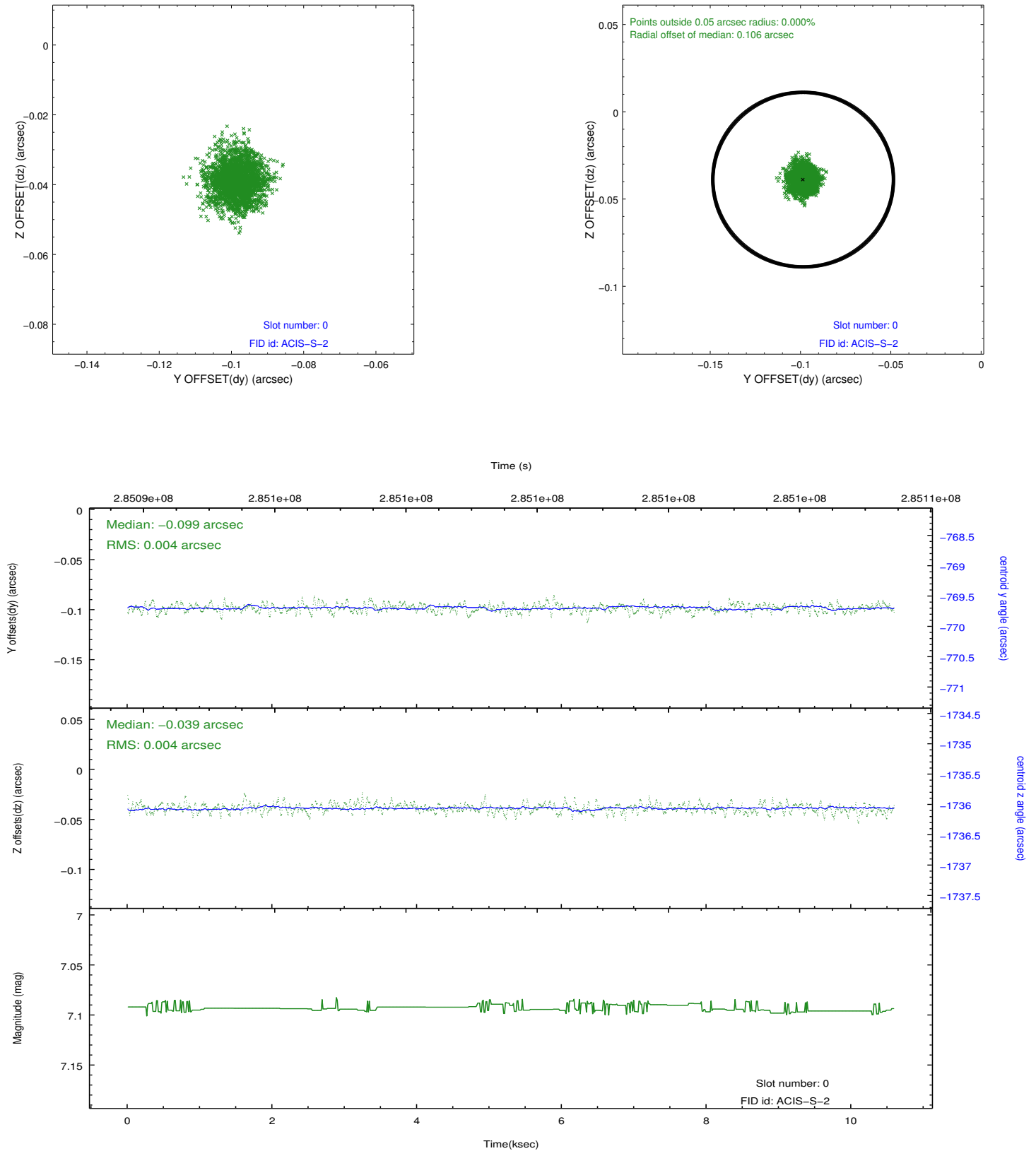


2.4.5 Slot 7

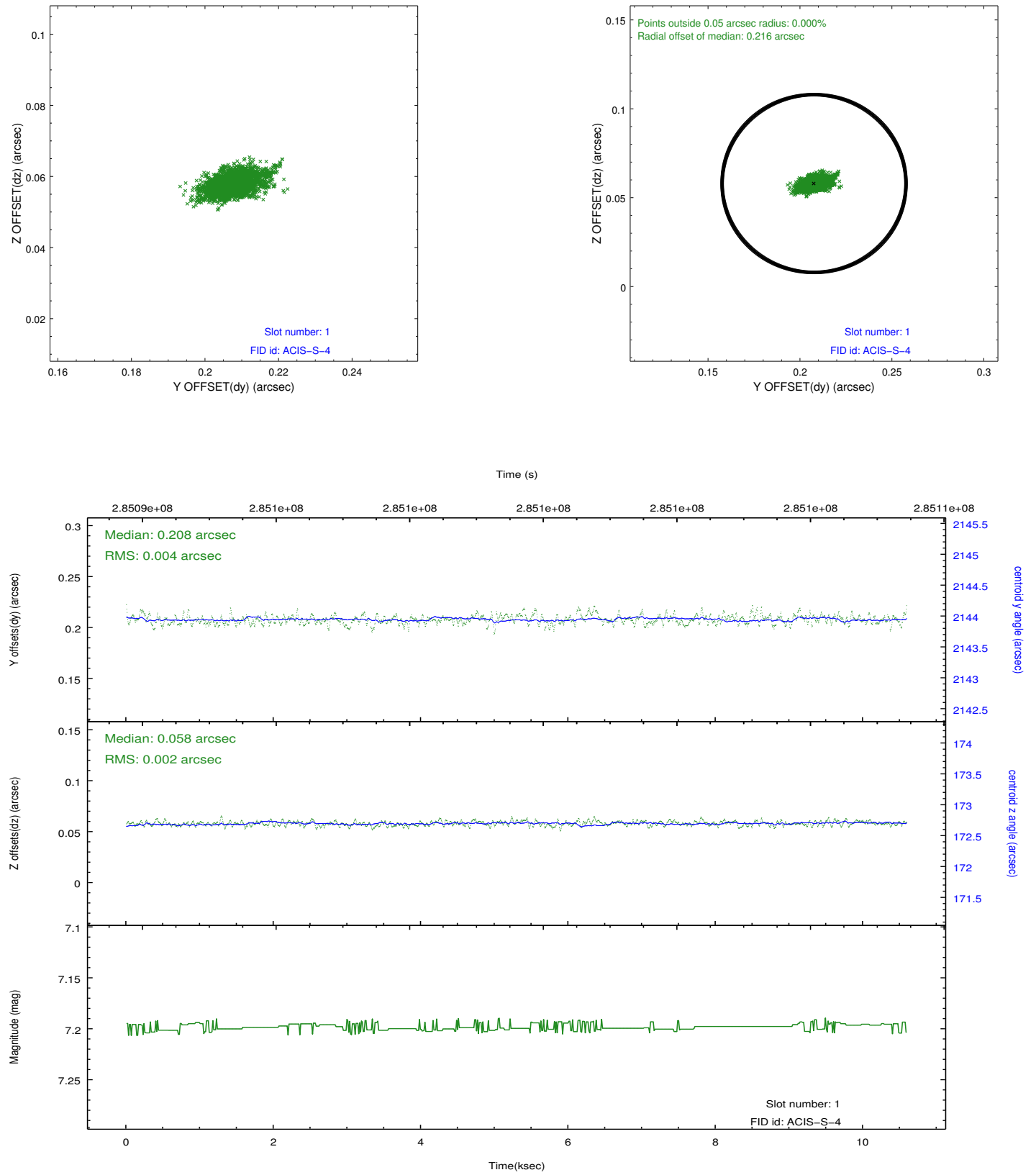


2.5 FID Slots

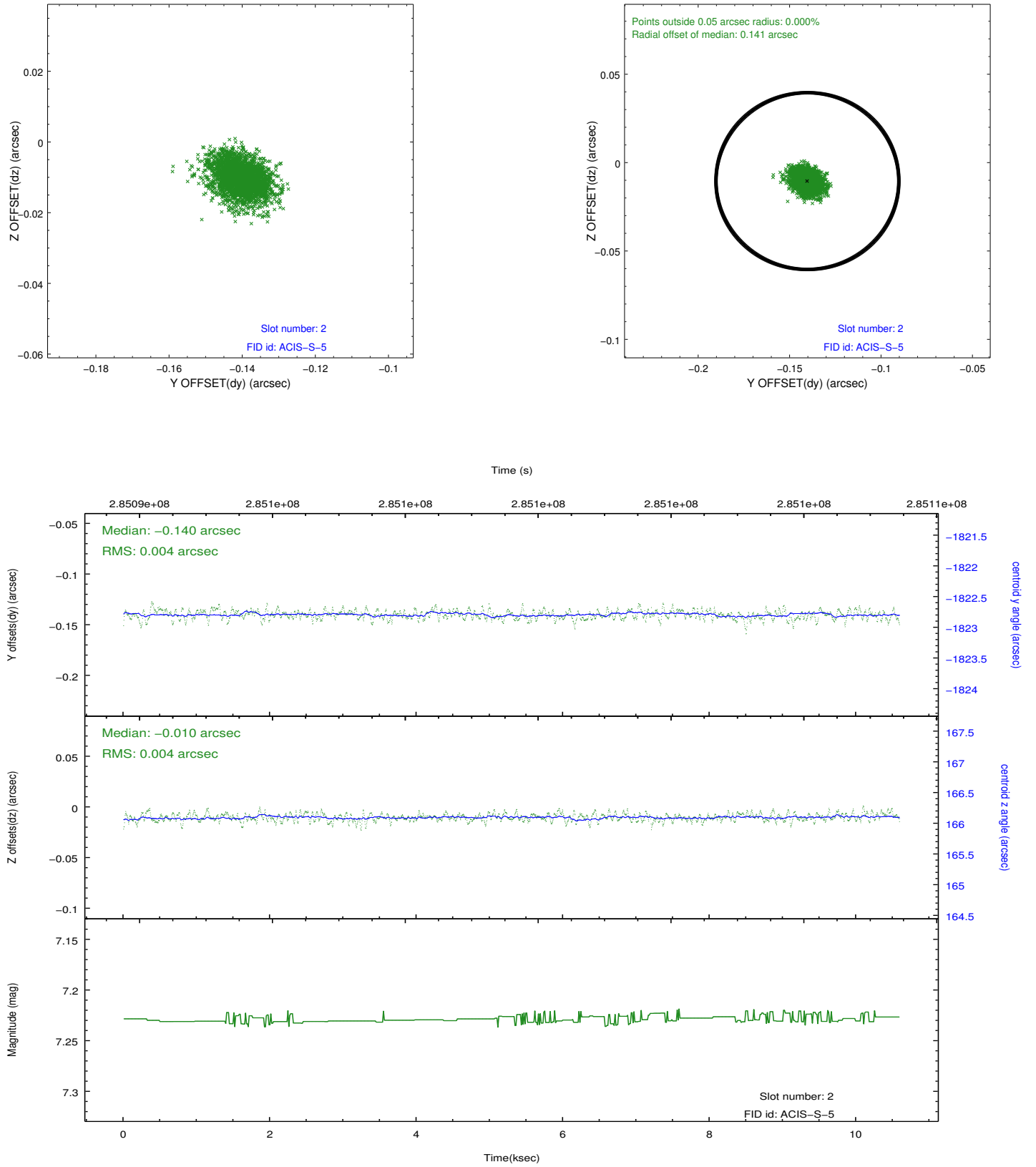
2.5.1 Slot 0



2.5.2 Slot 1



2.5.3 Slot 2



A Summary

A.1 Status

V&V Scientist	Jen Lauer
V&V Date (YYYY-MM-DD)	2012.04.19
V&V Edition	1
V&V Disposition and Status	OK
V&V Charge Time	10.044

A.2 Comments