

V&V Reference Report

L2 ASCDS Version : 8.4.4

Observation 7850 - L2 Version 3
Chandra X-Ray Center

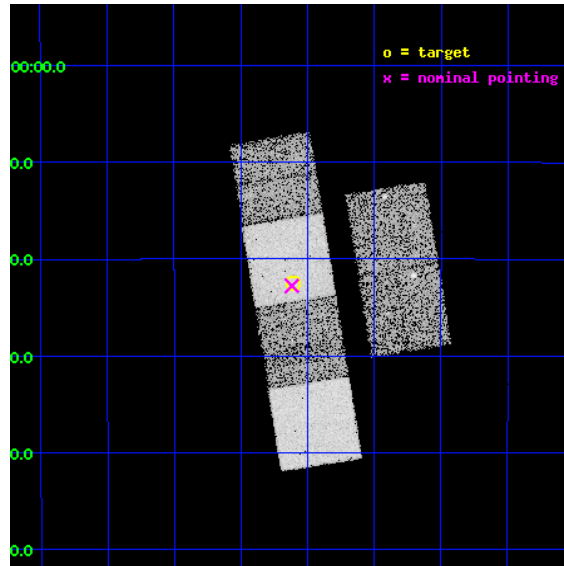
L2 Processing Date : Apr 21 2012

Contents

1	Front	2
2	OBI	3
2.1	OBI	3
2.1.1	Images	3
2.1.2	Bias	3
2.1.3	Parameters	4
2.1.4	Events	4
2.2	Compared Parameters	5
2.3	Aspect	6
2.4	Star Slots	9
2.4.1	Slot 3	9
2.4.2	Slot 4	10
2.4.3	Slot 5	11
2.4.4	Slot 6	12
2.4.5	Slot 7	13
2.5	FID Slots	14
2.5.1	Slot 0	14
2.5.2	Slot 1	15
2.5.3	Slot 2	16
A	Summary	17
A.1	Status	17
A.2	Comments	17

1 Front

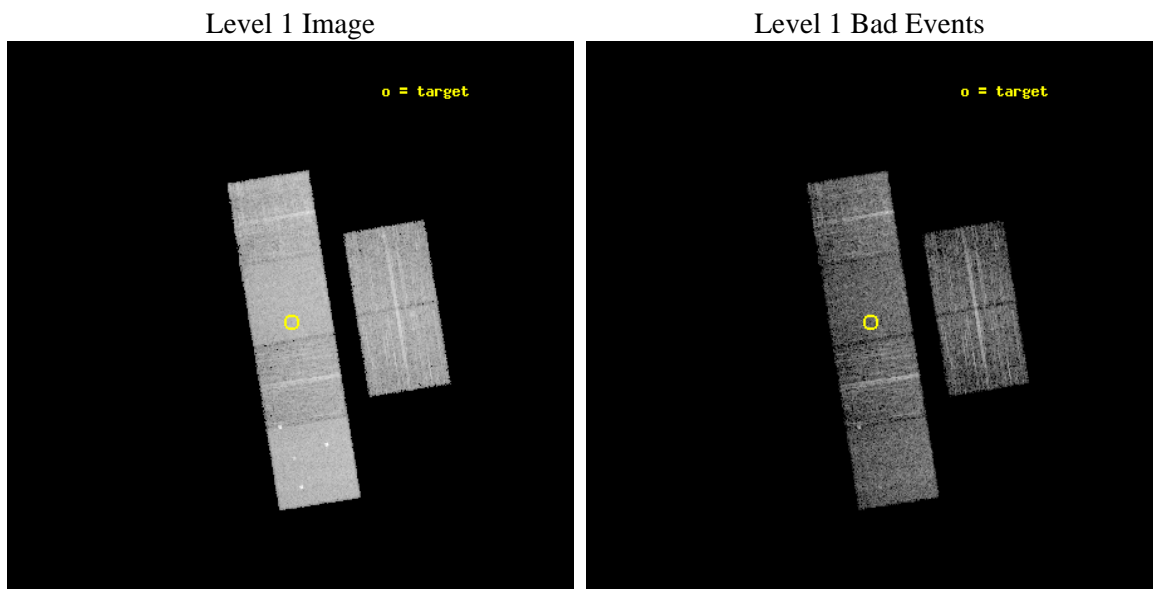
seq_num	701514	Sequence number
obs_id	7850	Observation id
title	Demographics of black holes in the local Universe.	Proposal title
observer	Prof. Smita Mathur	Principal investigator
object	NGC 1315	Source name
dtcycle	0	
cycle	P	events from which exps? Prim/Second/Both
ra_targ	50.7775	Observer's specified target RA [deg]
dec_targ	-21.375167	Observer's specified target Dec [deg]
ra_nom	50.779463268235	Nominal RA [deg]
dec_nom	-21.379615205449	Nominal Dec [deg]
roll_nom	260.8044794221	Nominal Roll [deg]
revision	3	Processing version of data
ontime	4651.5899020433	Sum of GTIs [s]
livetime	4592.6886698525	Livetime [s]
ontime2	4651.6309420466	Sum of GTIs [s]
ontime3	4651.4667820334	Sum of GTIs [s]
ontime5	4651.54886204	Sum of GTIs [s]
ontime6	4651.5078220367	Sum of GTIs [s]
ontime7	4651.5899020433	Sum of GTIs [s]
ontime8	4648.1846522093	Sum of GTIs [s]
l2events	83639	Number of level 2 events



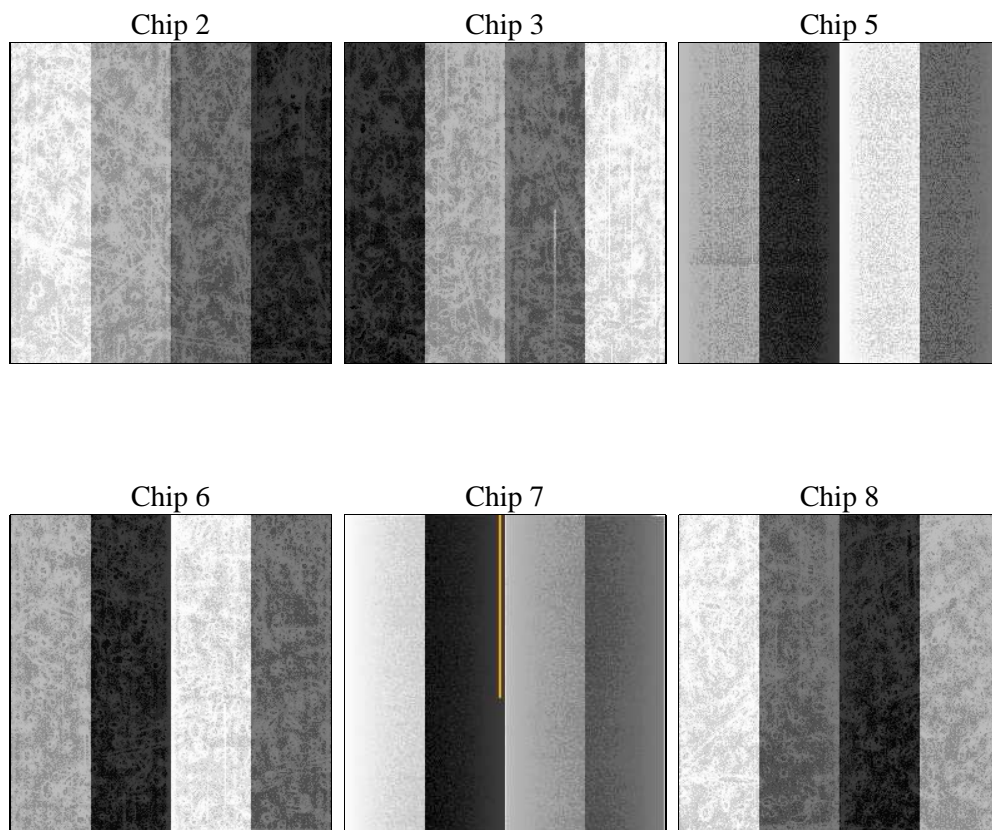
2 OBI

2.1 OBI

2.1.1 Images



2.1.2 Bias



2.1.3 Parameters

obi_num	0	Obi number	sched_exp_time	4896.869000	[s] Scheduled observation exposure time
ascdsver	8.4.4	Processing system revision	ontime	4651.5899020433	Sum of GTIs [s]
caldsver	4.4.9	 	ontime2	4651.6309420466	Sum of GTIs [s]
date	2012-04-21T13:23:13	Date and time of file creation	ontime3	4651.4667820334	Sum of GTIs [s]
revision	3	Processing version of data	ontime5	4651.54886204	Sum of GTIs [s]
			ontime6	4651.5078220367	Sum of GTIs [s]
			ontime7	4651.5899020433	Sum of GTIs [s]
			ontime8	4648.1846522093	Sum of GTIs [s]
			l1events	324704	Number of level 1 events

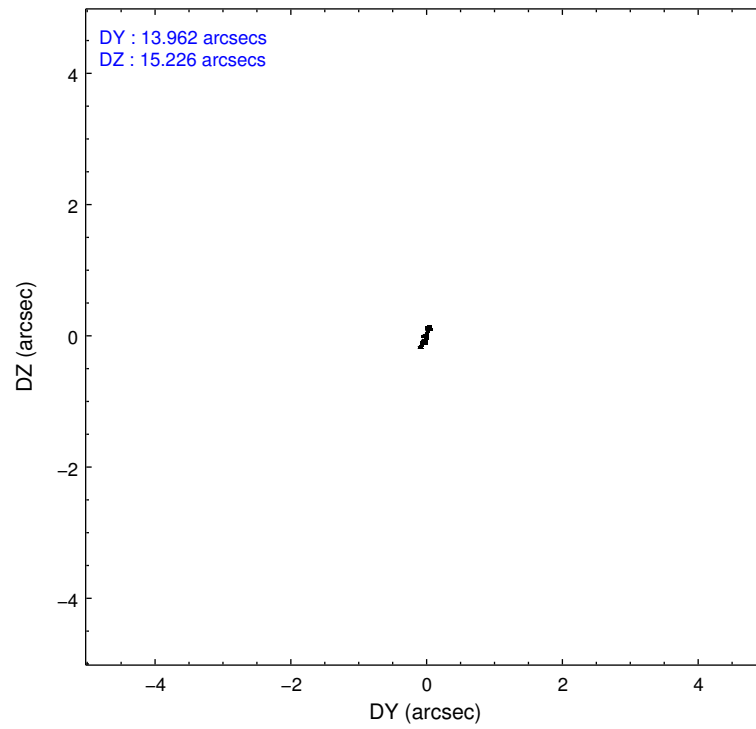
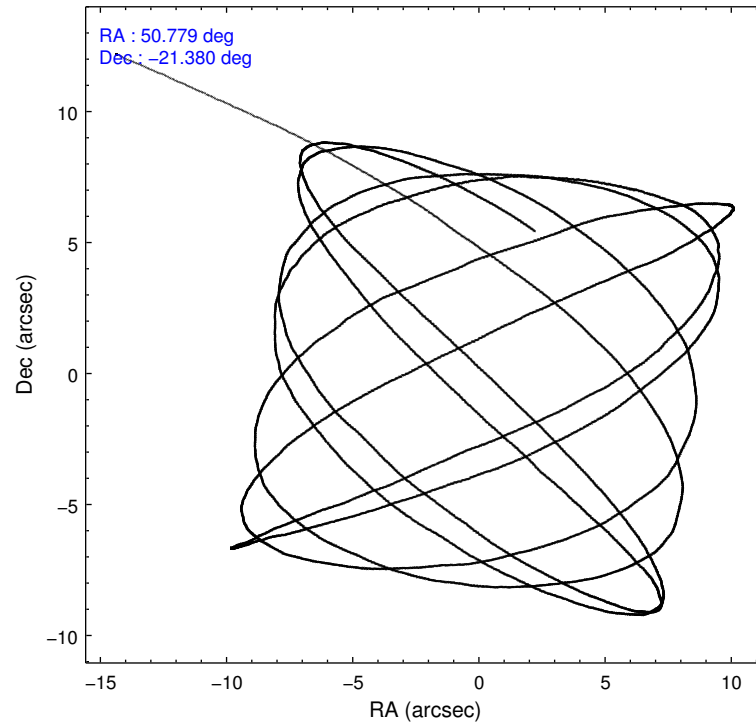
2.1.4 Events

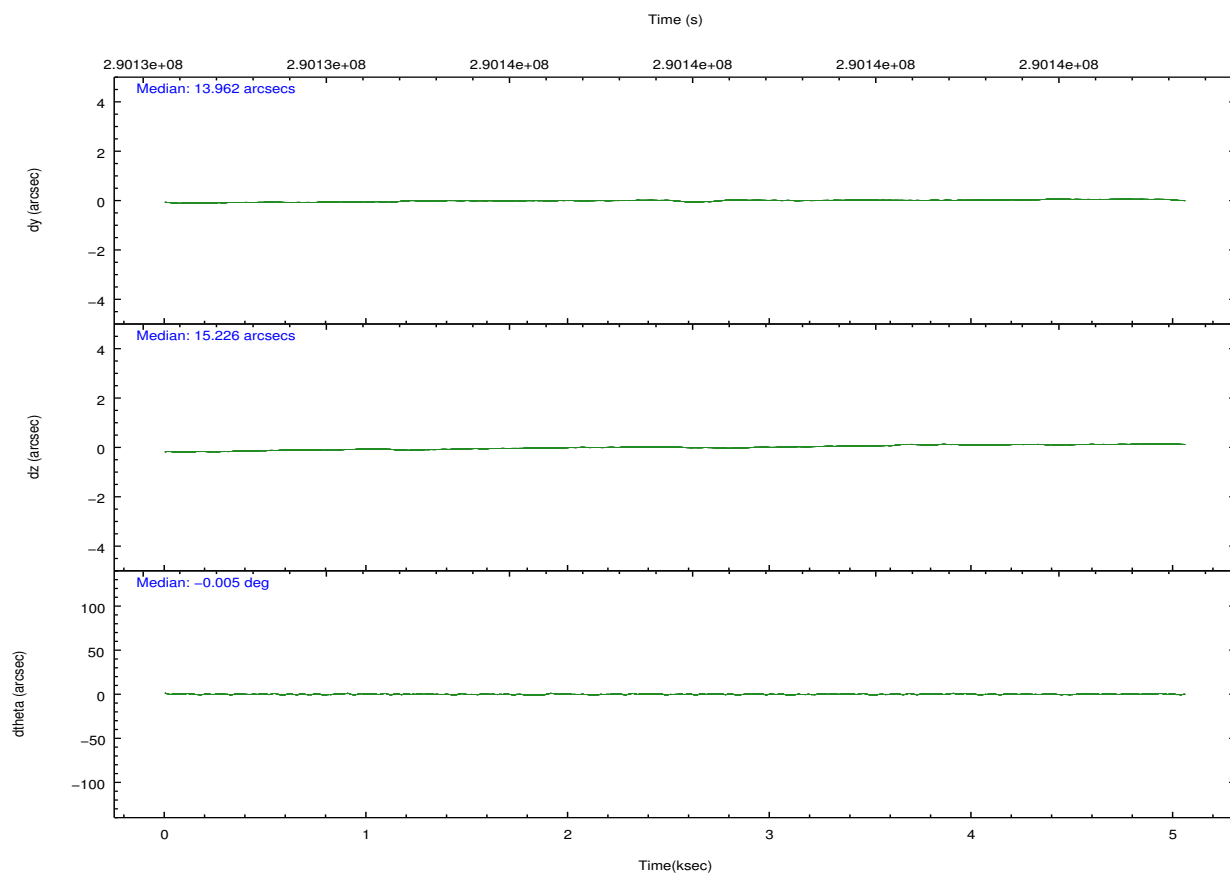
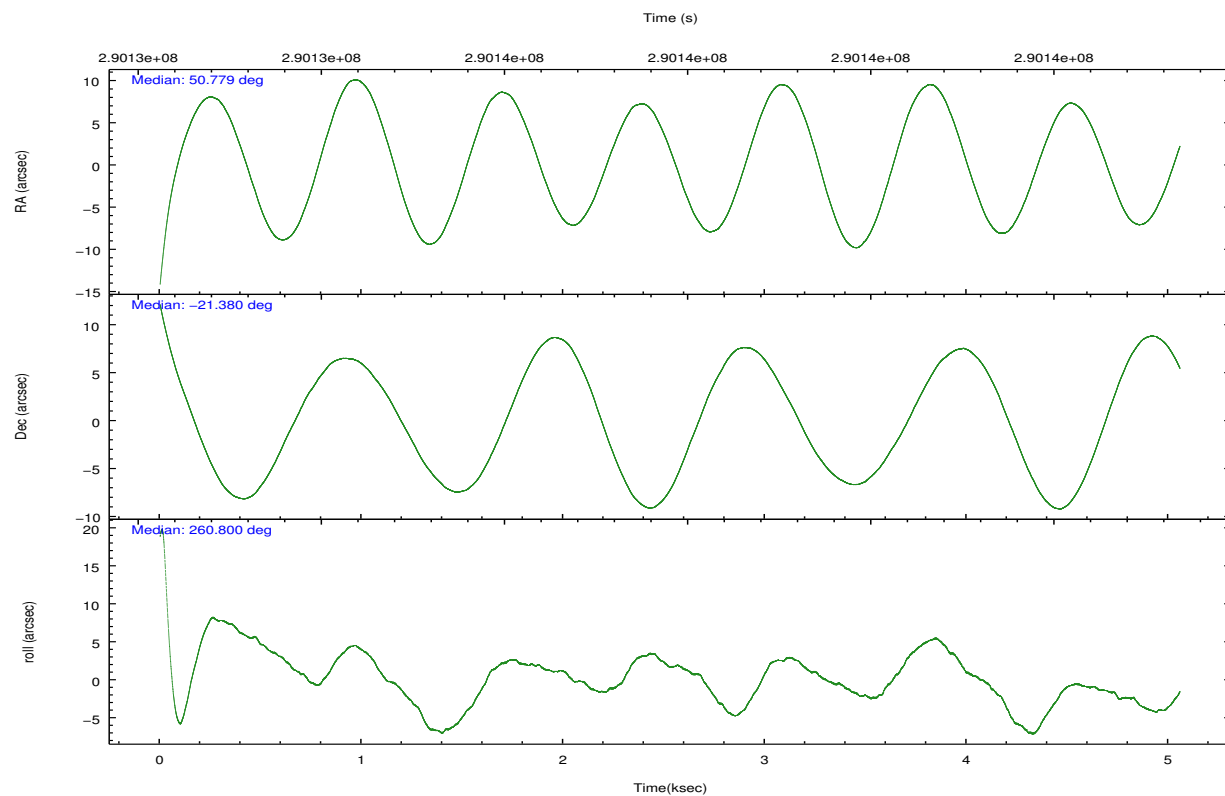
	ccd 2	ccd 3	ccd 5	ccd 6	ccd 7	ccd 8		ccd 2	ccd 3	ccd 5	ccd 6	ccd 7	ccd 8
level 1 events	45669	42642	70292	45241	62621	58239	grade 0 events	3603	3363	4143	3102	2620	5015
rejected events	38834	36085	35868	38456	34352	45068		7%	7%	5%	6%	4%	8%
rejected %	85%	84%	51%	85%	54%	77%	grade 1 events	38	37	275	28	56	61
								0%	0%	0%	0%	0%	0%
							grade 2 events	1247	1198	9926	1403	5535	2756
								2%	2%	14%	3%	8%	4%
							grade 3 events	546	555	1476	558	2370	1256
								1%	1%	2%	1%	3%	2%
							grade 4 events	511	518	1419	543	2318	1149
								1%	1%	2%	1%	3%	1%
							grade 5 events	1739	1970	4831	1987	5545	2705
								3%	4%	6%	4%	8%	4%
							grade 6 events	945	935	17501	1184	15473	3006
								2%	2%	24%	2%	24%	5%
							grade 7 events	37040	34066	30721	36436	28704	42291
								81%	79%	43%	80%	45%	72%

2.2 Compared Parameters

Parameter	Planned	Actual	Parameter	Planned	Actual
Instrument	ACIS	ACIS	Obspar format version number	7	7
Detector	ACIS-235678	ACIS-235678	Obspar file type	PREDICTED	ACTUAL
Grating	NONE	NONE	Obspar update status	NONE	UPDATED
Data mode	FAINT	FAINT	Number of optional ACIS chips dropped	0	0
Observation mode	POINTING	POINTING	On-chip summing requested	N	N
[deg] Pointing RA	50.768688	50.77946326823488	Subarray requested	NONE	NONE
[deg] Pointing Dec	-21.354225	-21.37961520544933	Alternating exposures requested	N	N
[deg] Pointing Roll	260.643848	260.8044794220988	[s] Primary exposure time	0.000000	3.2
[mm] SIM focus pos	-0.684267	-0.6828225247311905			
[mm] SIM defocus	0	0.001444936568705701			
[mm] SIM translation stage pos	-190.132523	-190.1400660498719			
[mm] SIM translation stage offset	0	0.00754346686406393			
[s] Observation start time (MET)	290133541.184000	290132667.49631			
Observation start date	2007-03-13T00:37:56	2007-03-13T00:24:27			
[s] Observation end time (MET)	290138438.184000	290138660.6716			
Observation end date	2007-03-13T01:59:33	2007-03-13T02:04:20			
Read mode	TIMED	TIMED			

2.3 Aspect



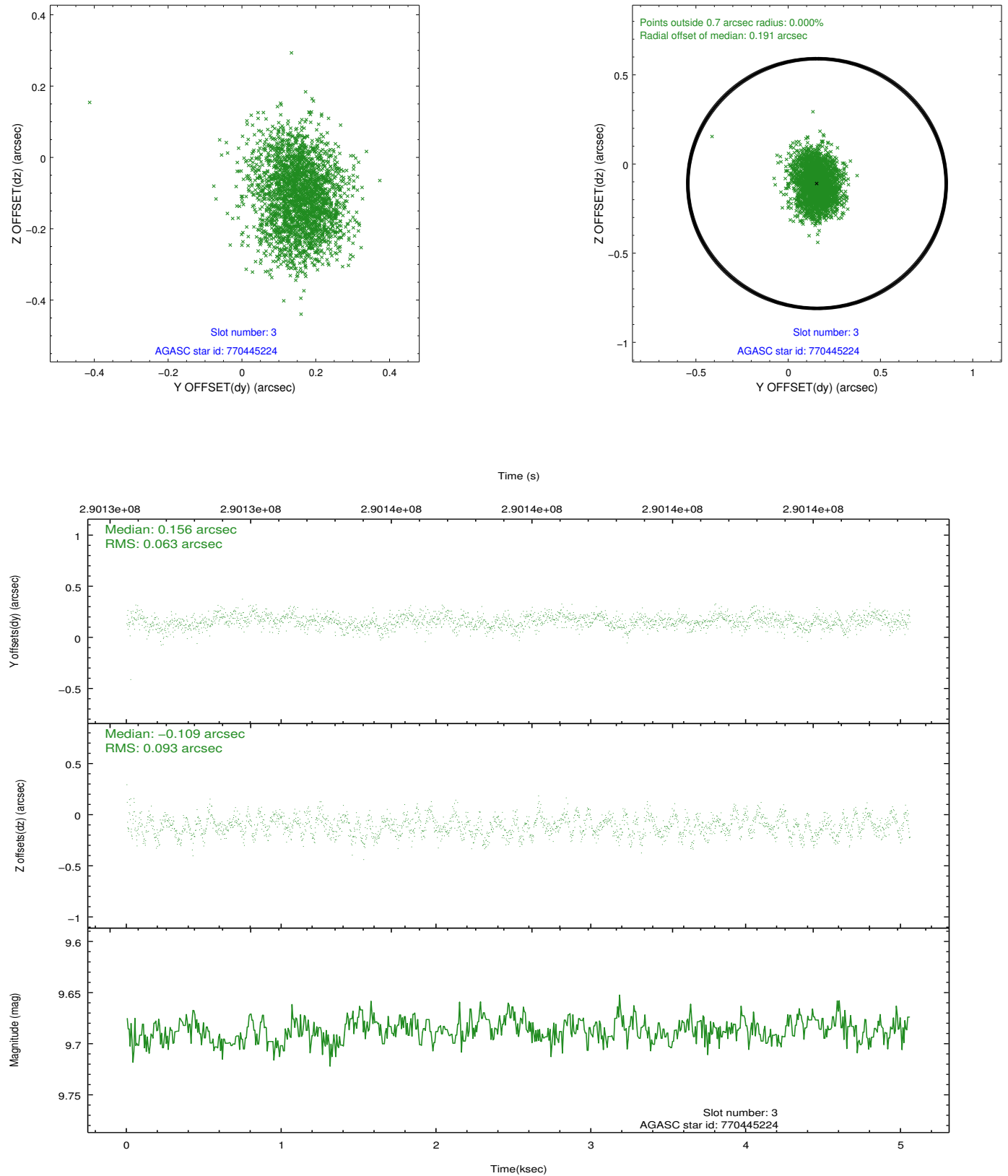


Slot Statistics

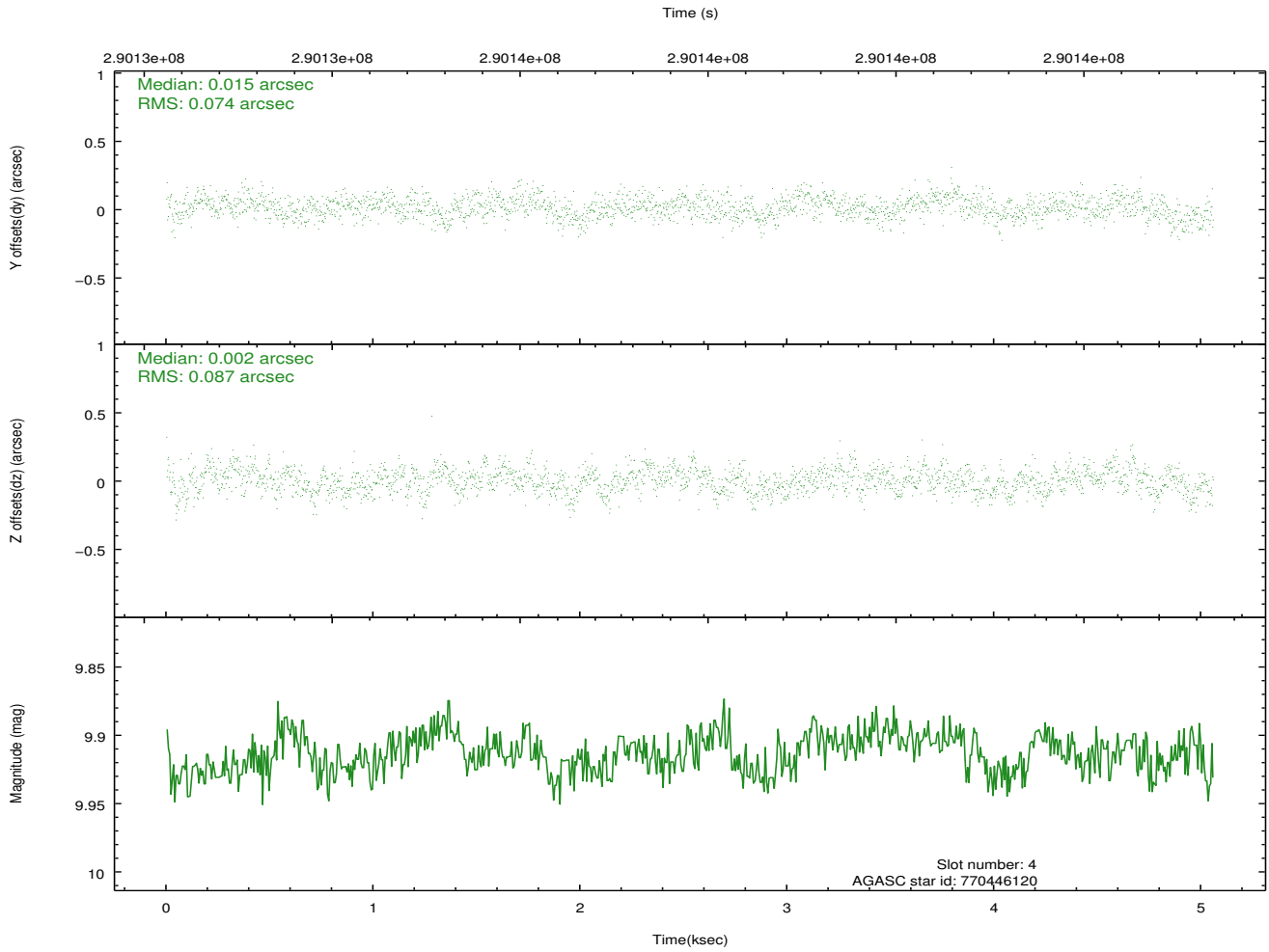
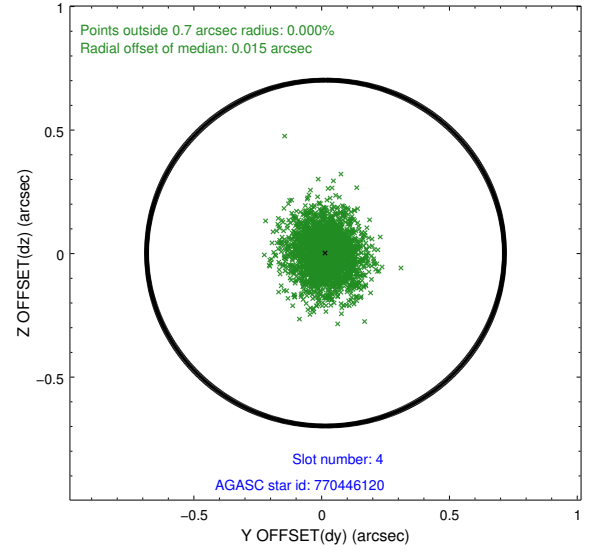
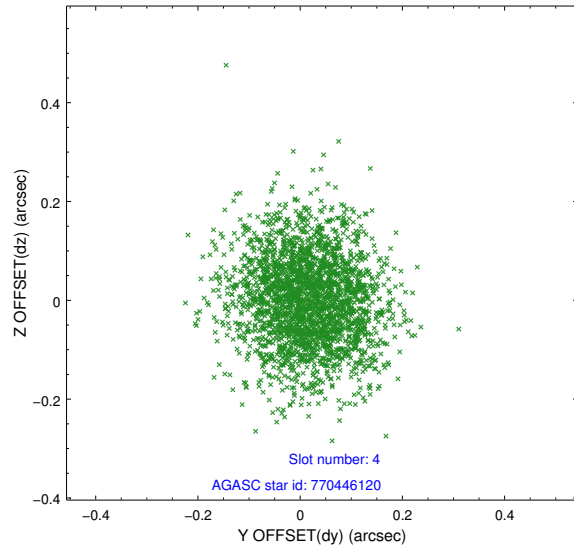
slot	status	id	mag	n_pts	med_dy	med_dz	dr1	dr2	ra	dec	mean_y	mean_z
0	FID	ACIS-S-1	7.18	1234	0.037	-0.061	0.008	0.015	0.000000	0.000000	929.18	-1732.30
1	FID	ACIS-S-4	7.19	1234	0.163	0.029	0.007	0.011	0.000000	0.000000	2147.37	170.71
2	FID	ACIS-S-5	7.22	1233	-0.227	0.044	0.006	0.011	0.000000	0.000000	-1818.42	165.66
3	GUIDE	770445224	9.69	2466	0.156	-0.109	0.119	0.192	50.264058	-21.103291	-612.42	-1818.56
4	GUIDE	770446120	9.91	2465	0.015	0.002	0.120	0.195	50.291160	-21.553330	969.47	-1460.93
5	GUIDE	770574568	10.01	2459	0.131	0.166	0.141	0.229	51.368691	-21.982502	1910.95	2345.73
6	GUIDE	770581976	9.29	2466	-0.029	0.046	0.095	0.150	50.691202	-21.089617	-896.04	-410.05
7	GUIDE	770444952	9.91	2463	-0.272	-0.112	0.133	0.212	50.240001	-20.619061	-2318.69	-2187.72

2.4 Star Slots

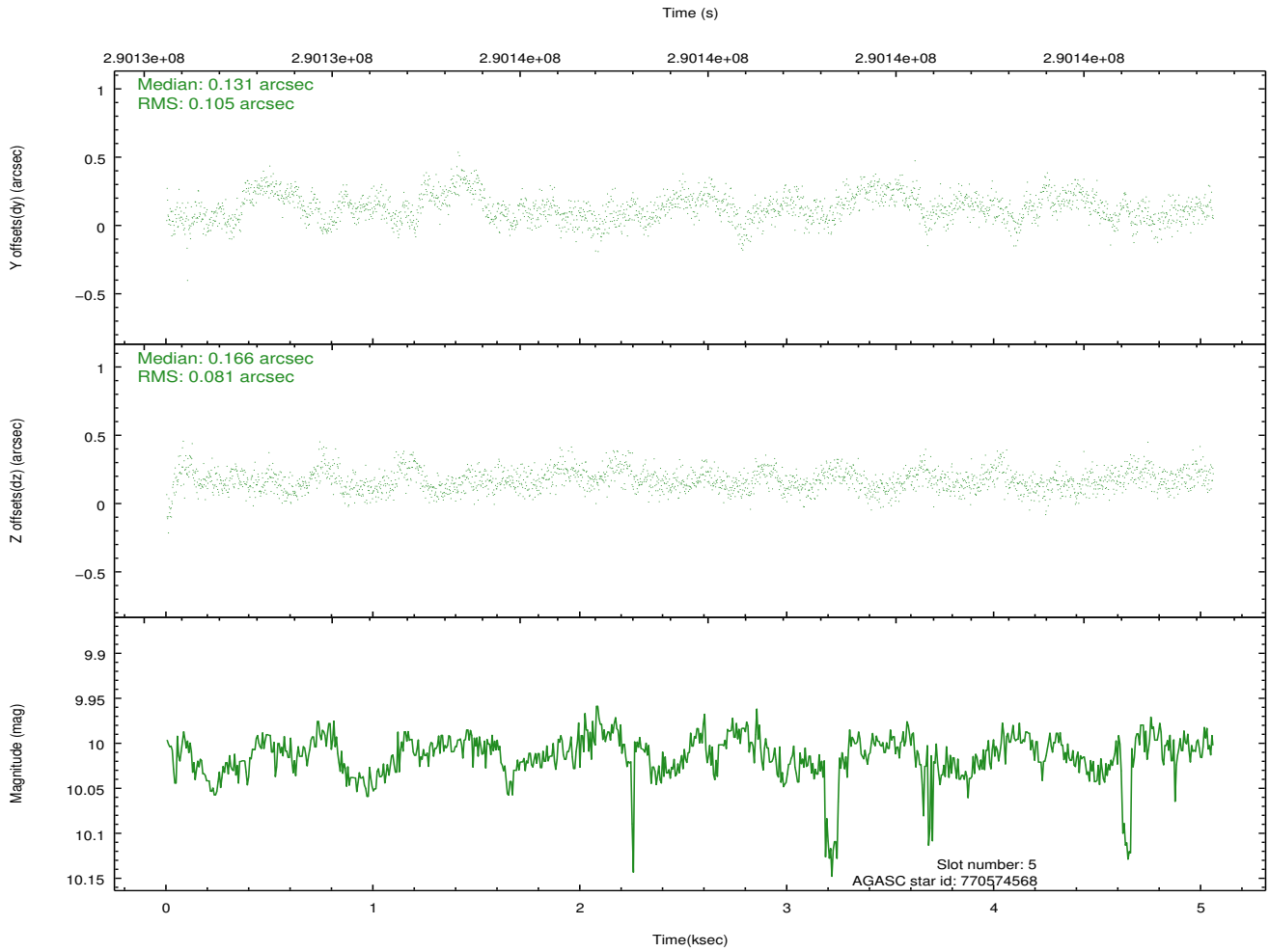
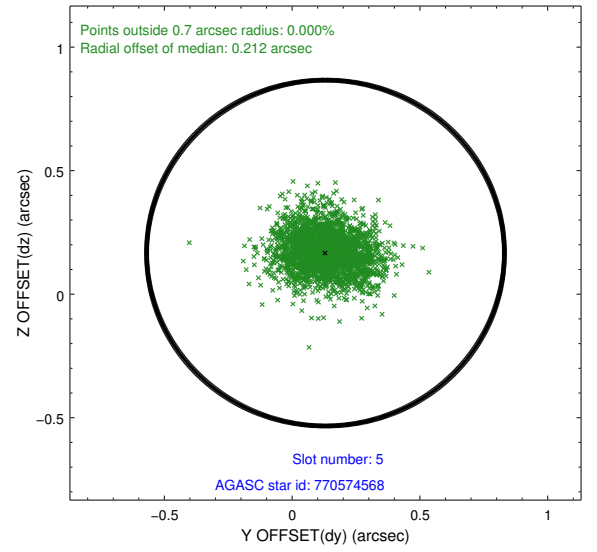
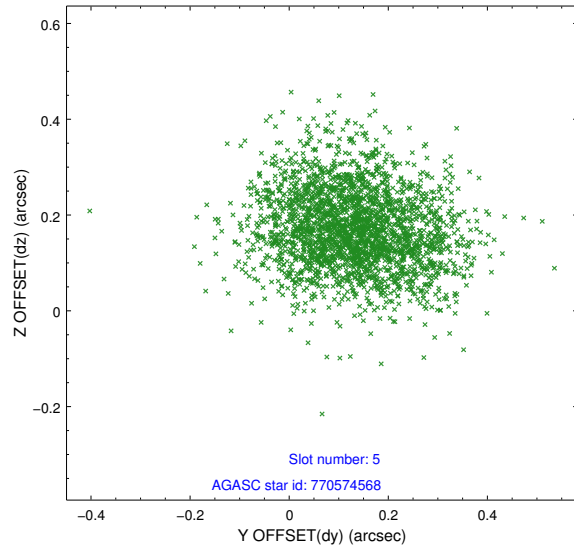
2.4.1 Slot 3



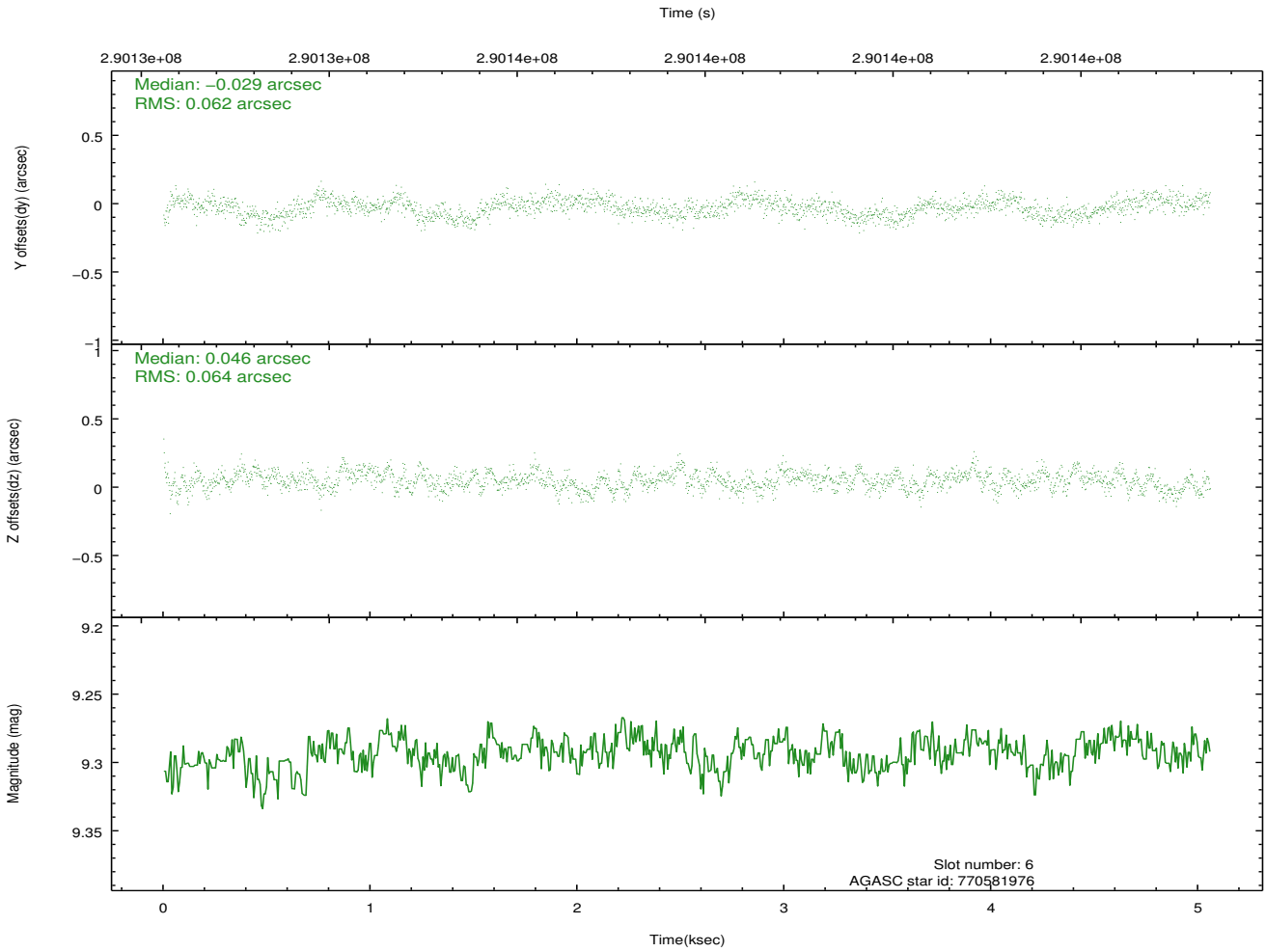
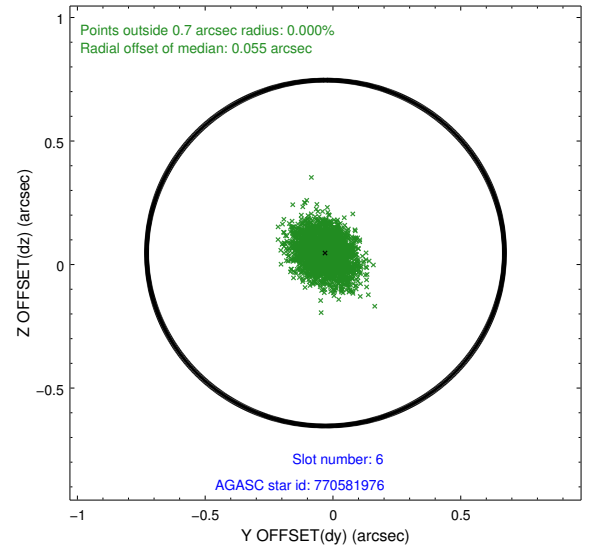
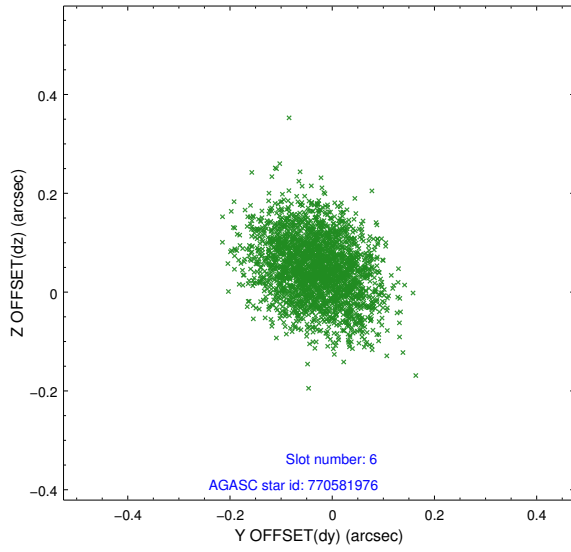
2.4.2 Slot 4



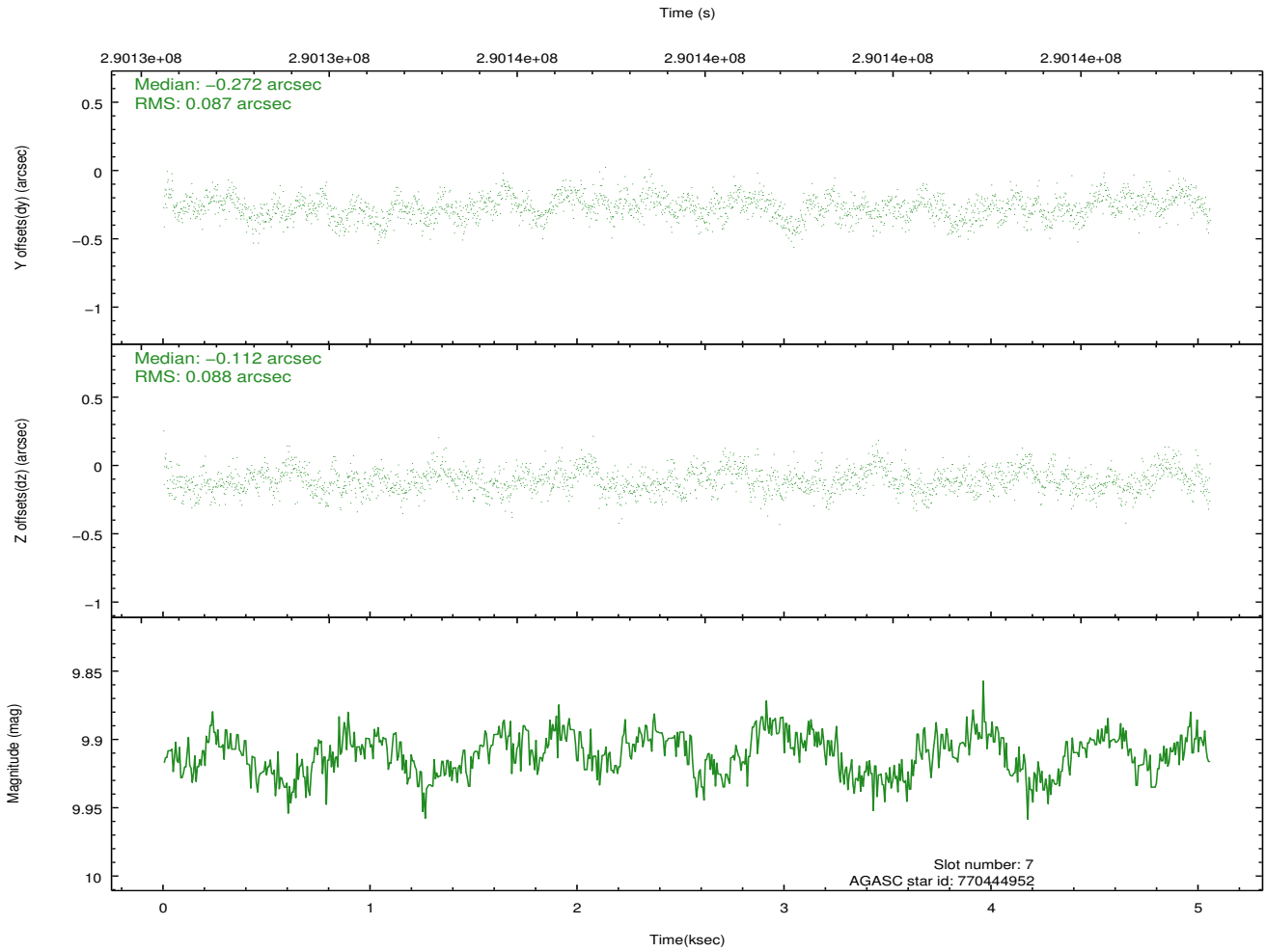
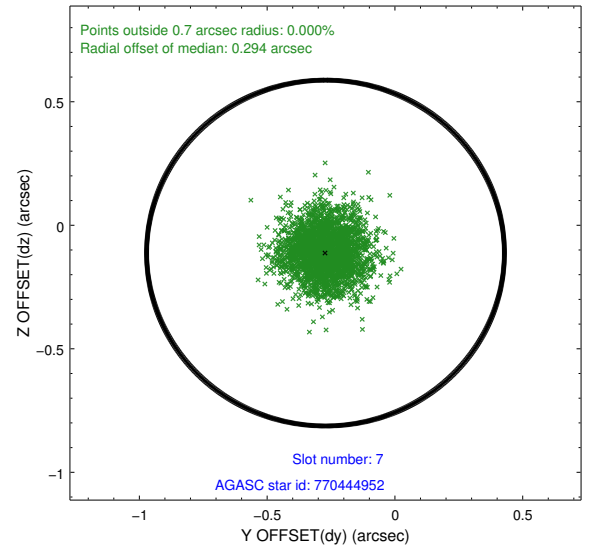
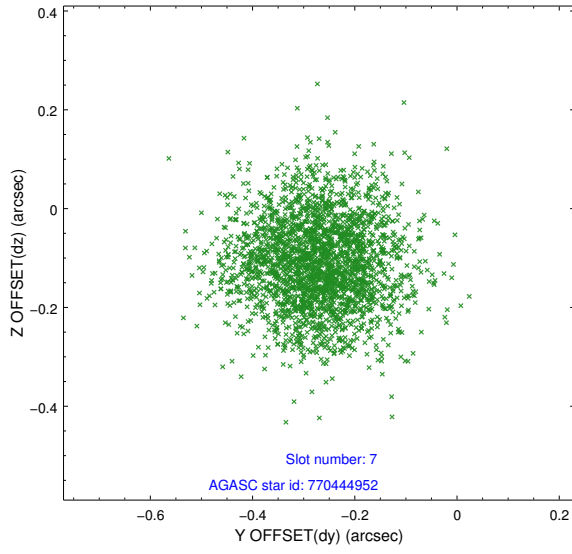
2.4.3 Slot 5



2.4.4 Slot 6

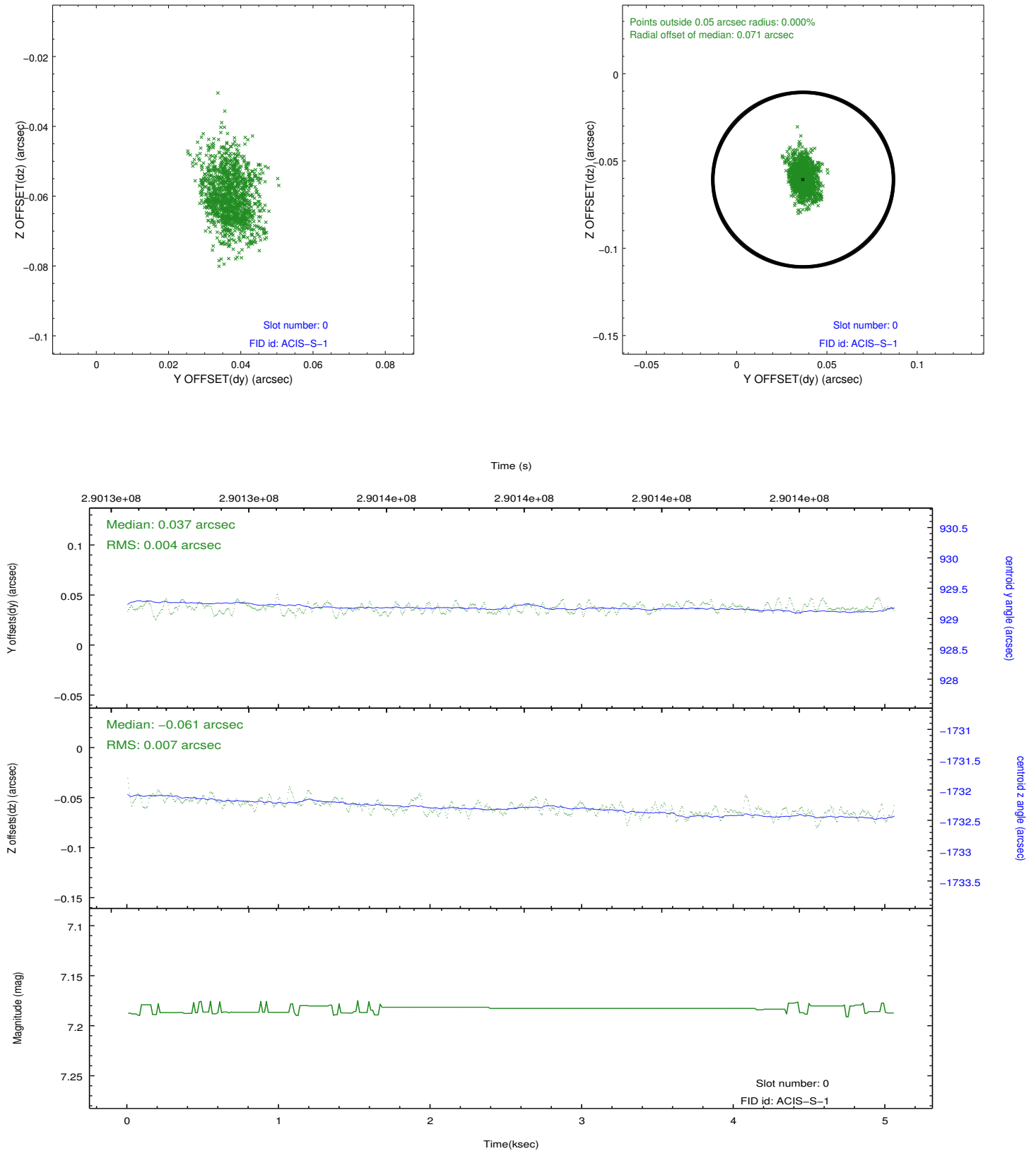


2.4.5 Slot 7

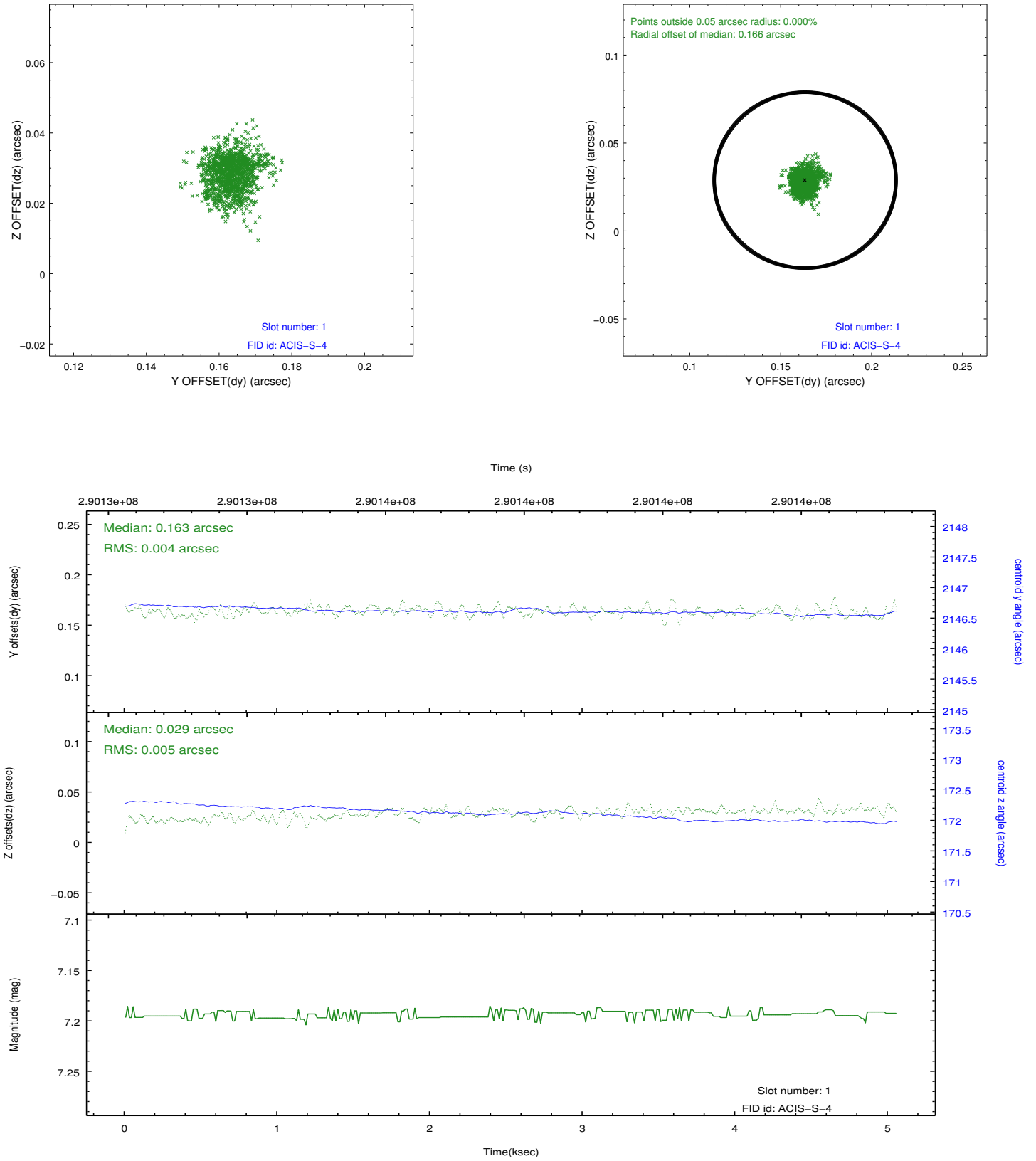


2.5 FID Slots

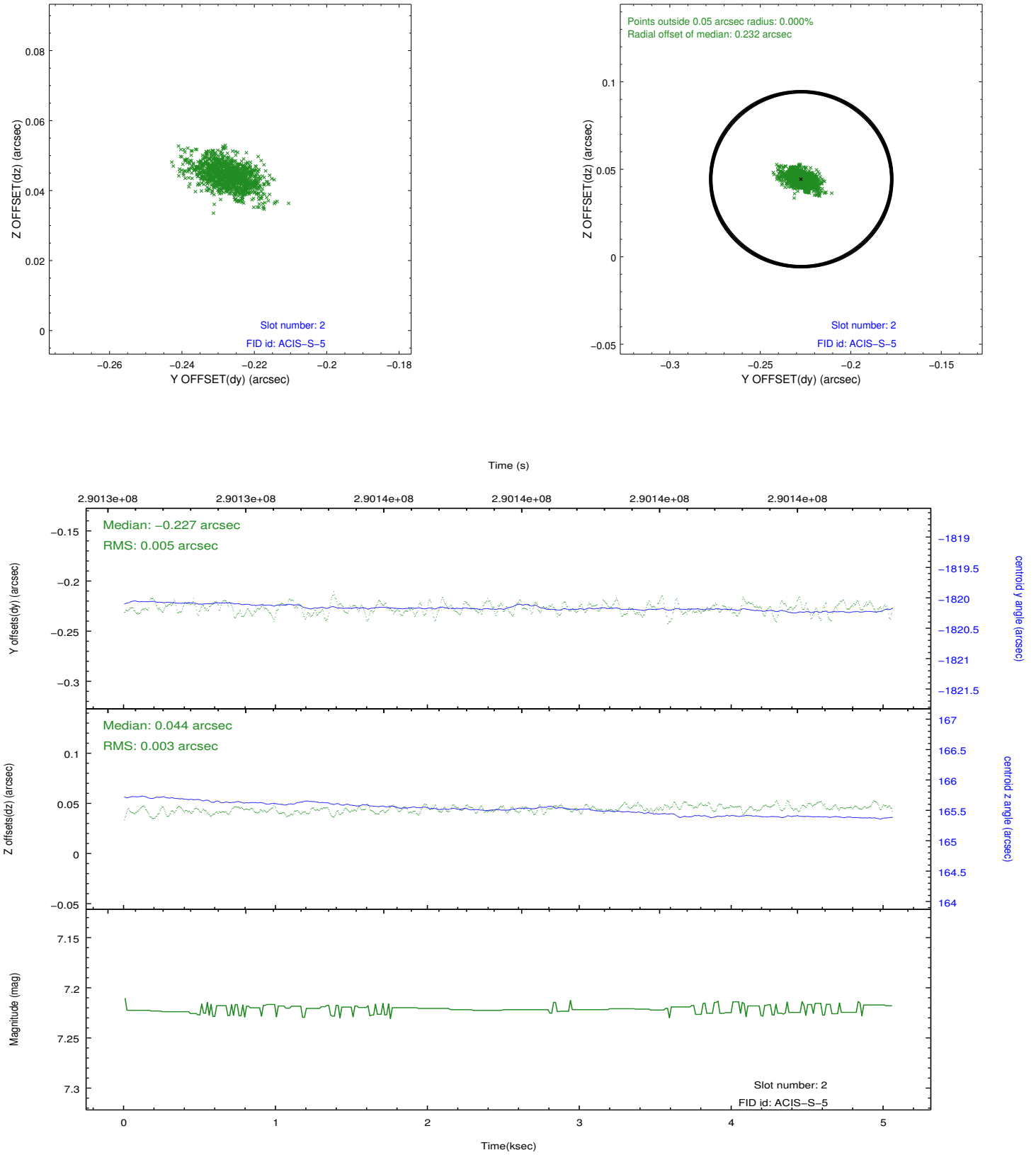
2.5.1 Slot 0



2.5.2 Slot 1



2.5.3 Slot 2



A Summary

A.1 Status

V&V Scientist	Beth Sundheim
V&V Date (YYYY-MM-DD)	2012.04.23
V&V Edition	1
V&V Disposition and Status	OK
V&V Charge Time	4.65279998

A.2 Comments