

V&V Reference Report

L2 ASCDS Version : 8.4.4

Observation 7840 - L2 Version 3
Chandra X-Ray Center

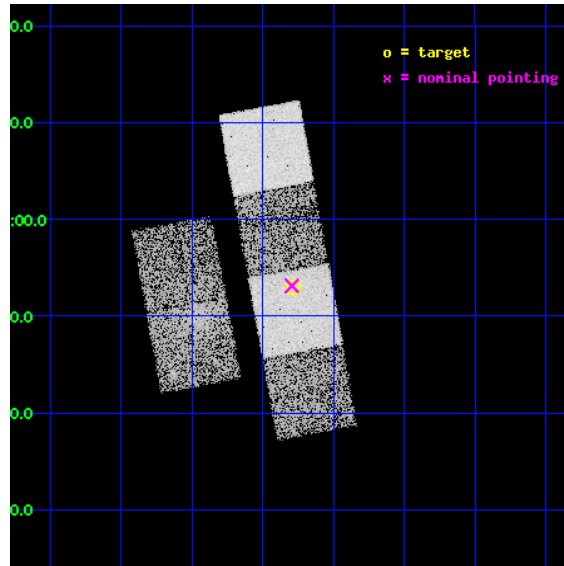
L2 Processing Date : Apr 20 2012

Contents

1	Front	2
2	OBI	3
2.1	OBI	3
2.1.1	Images	3
2.1.2	Bias	3
2.1.3	Parameters	4
2.1.4	Events	4
2.2	Compared Parameters	5
2.3	Aspect	6
2.4	Star Slots	9
2.4.1	Slot 3	9
2.4.2	Slot 4	10
2.4.3	Slot 5	11
2.4.4	Slot 6	12
2.4.5	Slot 7	13
2.5	FID Slots	14
2.5.1	Slot 0	14
2.5.2	Slot 1	15
2.5.3	Slot 2	16
A	Summary	17
A.1	Status	17
A.2	Comments	17

1 Front

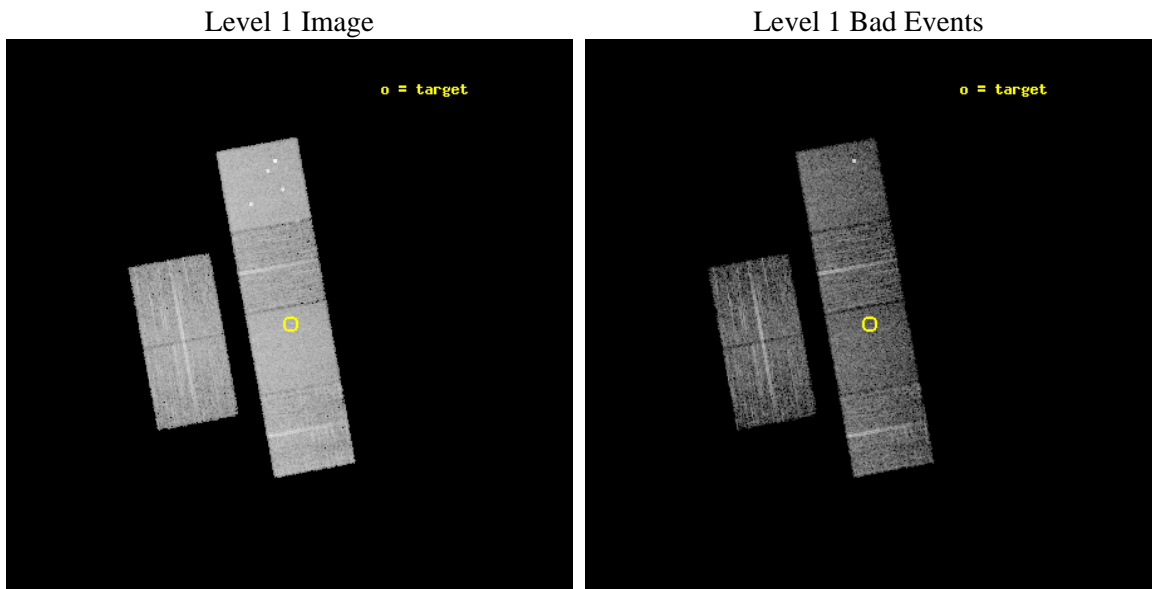
seq_num	701504	Sequence number
obs_id	7840	Observation id
title	Demographics of black holes in the local Universe.	Proposal title
observer	Prof. Smita Mathur	Principal investigator
object	UGC 7546	Source name
dtcycle	0	
cycle	P	events from which exps? Prim/Second/Both
ra_targ	186.696667	Observer's specified target RA [deg]
dec_targ	8.884611	Observer's specified target Dec [deg]
ra_nom	186.69856405554	Nominal RA [deg]
dec_nom	8.8856195459889	Nominal Dec [deg]
roll_nom	79.656492850499	Nominal Roll [deg]
revision	3	Processing version of data
ontime	4953.599981606	Sum of GTIs [s]
livetime	4890.8745159391	Livetime [s]
ontime2	4953.599981606	Sum of GTIs [s]
ontime3	4953.551641345	Sum of GTIs [s]
ontime5	4953.599981606	Sum of GTIs [s]
ontime6	4953.5926813483	Sum of GTIs [s]
ontime7	4953.599981606	Sum of GTIs [s]
ontime8	4953.5106013417	Sum of GTIs [s]
l2events	75748	Number of level 2 events



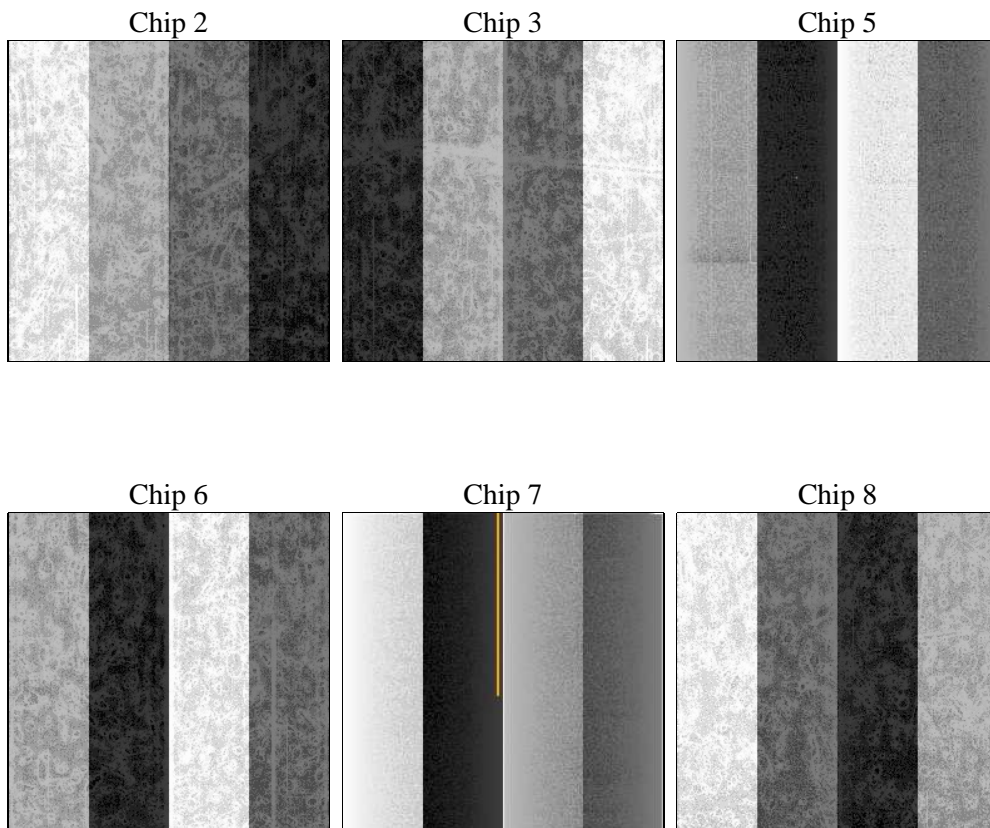
2 OBI

2.1 OBI

2.1.1 Images



2.1.2 Bias



2.1.3 Parameters

obi_num	0	Obi number	sched_exp_time	5000.000000	[s] Scheduled observation exposure time
ascdsver	8.4.4	Processing system revision	ontime	4953.599981606	Sum of GTIs [s]
caldbver	4.4.9	 	ontime2	4953.599981606	Sum of GTIs [s]
date	2012-04-20T03:18:48	Date and time of file creation	ontime3	4953.551641345	Sum of GTIs [s]
revision	3	Processing version of data	ontime5	4953.599981606	Sum of GTIs [s]
			ontime6	4953.5926813483	Sum of GTIs [s]
			ontime7	4953.599981606	Sum of GTIs [s]
			ontime8	4953.5106013417	Sum of GTIs [s]
			l1events	322689	Number of level 1 events

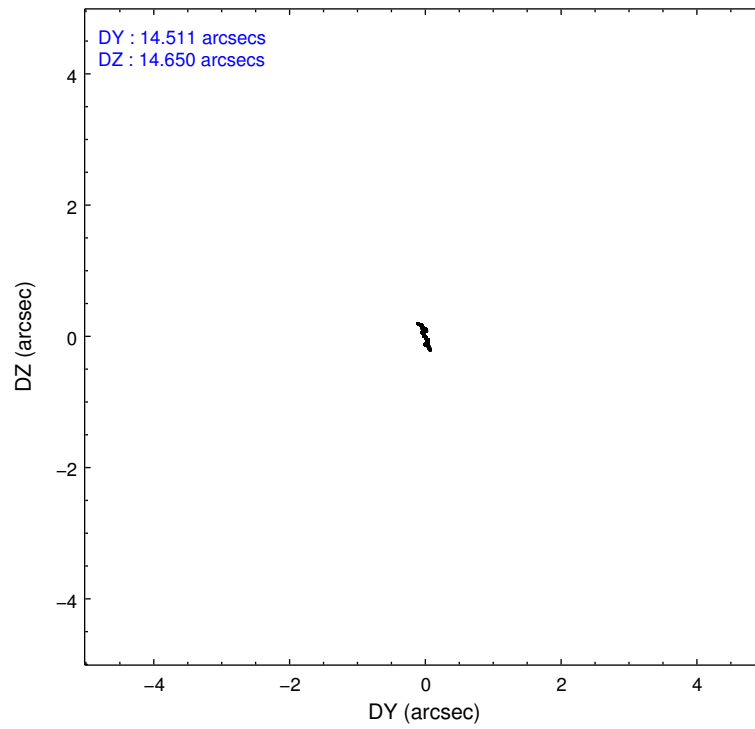
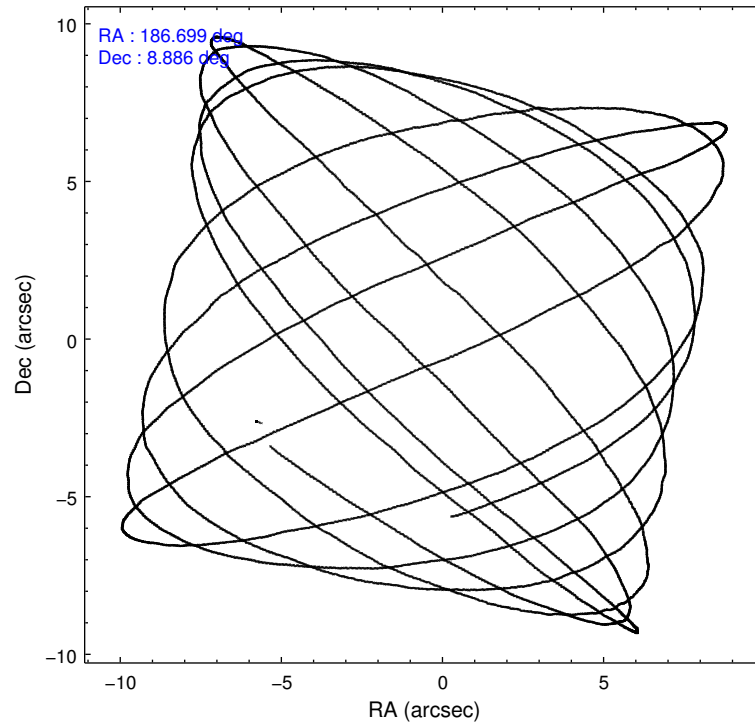
2.1.4 Events

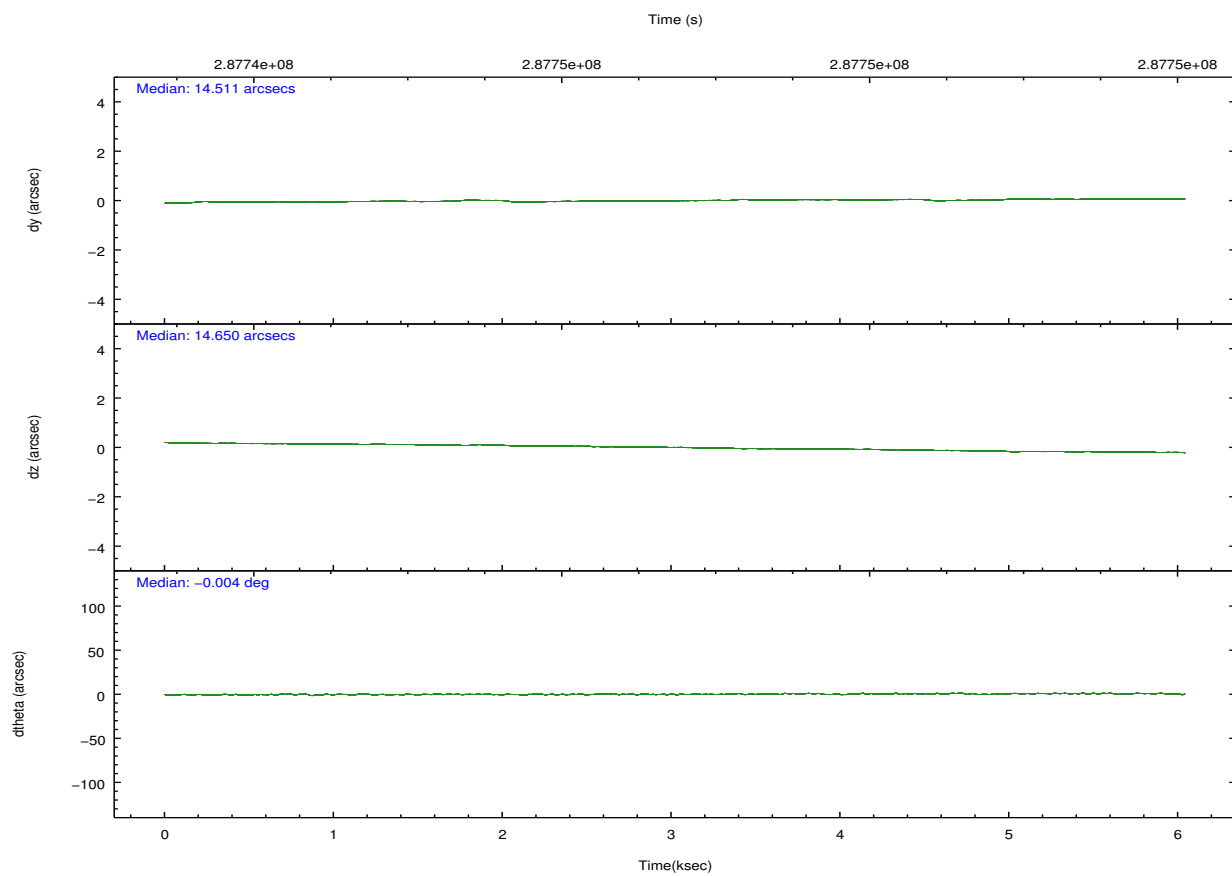
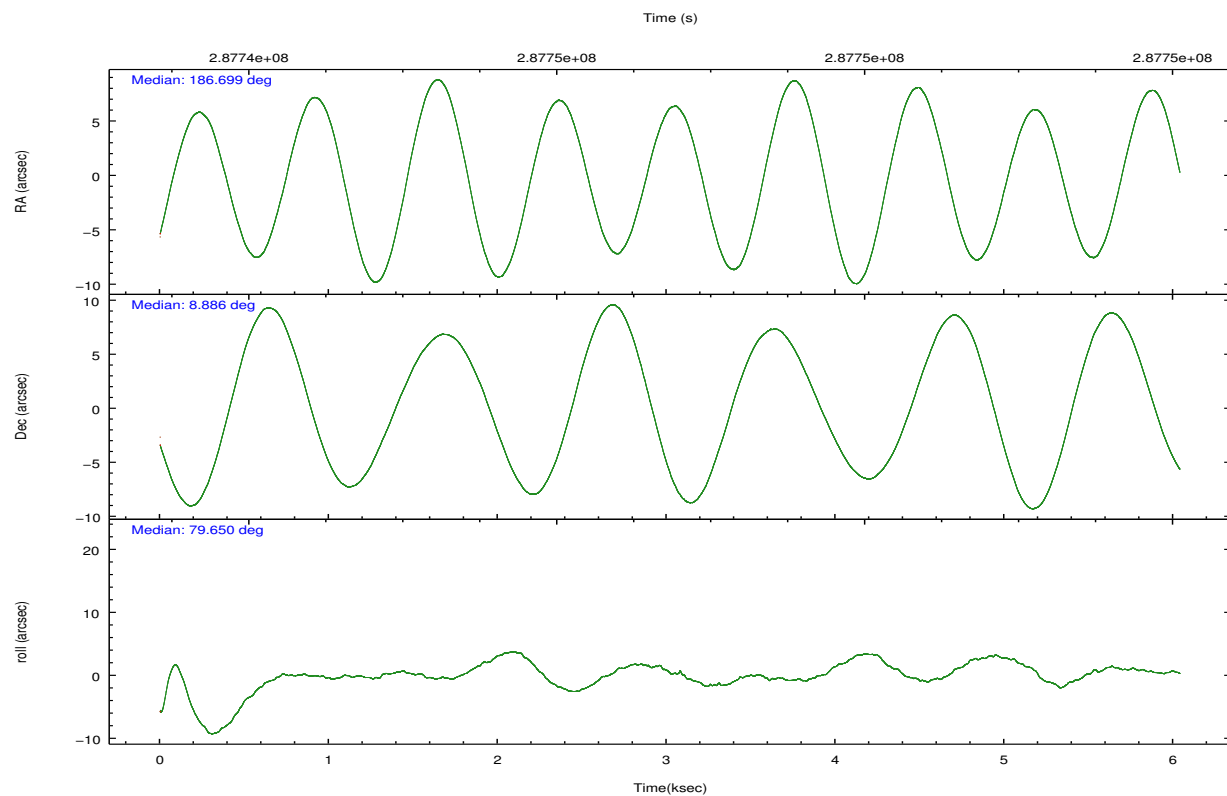
	ccd 2	ccd 3	ccd 5	ccd 6	ccd 7	ccd 8		ccd 2	ccd 3	ccd 5	ccd 6	ccd 7	ccd 8
level 1 events	43943	45165	70768	43708	61893	57212	grade 0 events	2564	3380	3938	2259	2335	4074
rejected events	38456	38559	37662	38165	36042	44333		5%	7%	5%	5%	3%	7%
rejected %	87%	85%	53%	87%	58%	77%	grade 1 events	29	29	109	24	66	38
								0%	0%	0%	0%	0%	0%
							grade 2 events	1143	1141	10295	1154	5236	2853
								2%	2%	14%	2%	8%	4%
							grade 3 events	439	526	1096	515	2246	1318
								0%	1%	1%	1%	3%	2%
							grade 4 events	482	558	1032	491	2119	1272
								1%	1%	1%	1%	3%	2%
							grade 5 events	1812	2014	4951	2122	5891	2791
								4%	4%	6%	4%	9%	4%
							grade 6 events	867	1008	16789	1133	13934	3364
								1%	2%	23%	2%	22%	5%
							grade 7 events	36607	36509	32558	36010	30066	41502
								83%	80%	46%	82%	48%	72%

2.2 Compared Parameters

Parameter	Planned	Actual	Parameter	Planned	Actual
Instrument	ACIS	ACIS	Obspar format version number	7	7
Detector	ACIS-235678	ACIS-235678	Obspar file type	PREDICTED	ACTUAL
Grating	NONE	NONE	Obspar update status	NONE	UPDATED
Data mode	FAINT	FAINT	Number of optional ACIS chips dropped	0	0
Observation mode	POINTING	POINTING	On-chip summing requested	N	N
[deg] Pointing RA	186.708184	186.6985640555393	Subarray requested	NONE	NONE
[deg] Pointing Dec	8.860017	8.885619545988851	Alternating exposures requested	N	N
[deg] Pointing Roll	79.498378	79.65649285049916	[s] Primary exposure time	0.000000	3.2
[mm] SIM focus pos	-0.684267	-0.6828225247311905			
[mm] SIM defocus	0	0.001444936568705701			
[mm] SIM translation stage pos	-190.132523	-190.1400660498719			
[mm] SIM translation stage offset	0	0.00754346686406393			
[s] Observation start time (MET)	287744756.184000	287743368.80774			
Observation start date	2007-02-13T09:04:51	2007-02-13T08:42:48			
[s] Observation end time (MET)	287749756.184000	287750186.08306			
Observation end date	2007-02-13T10:28:11	2007-02-13T10:36:26			
Read mode	TIMED	TIMED			

2.3 Aspect



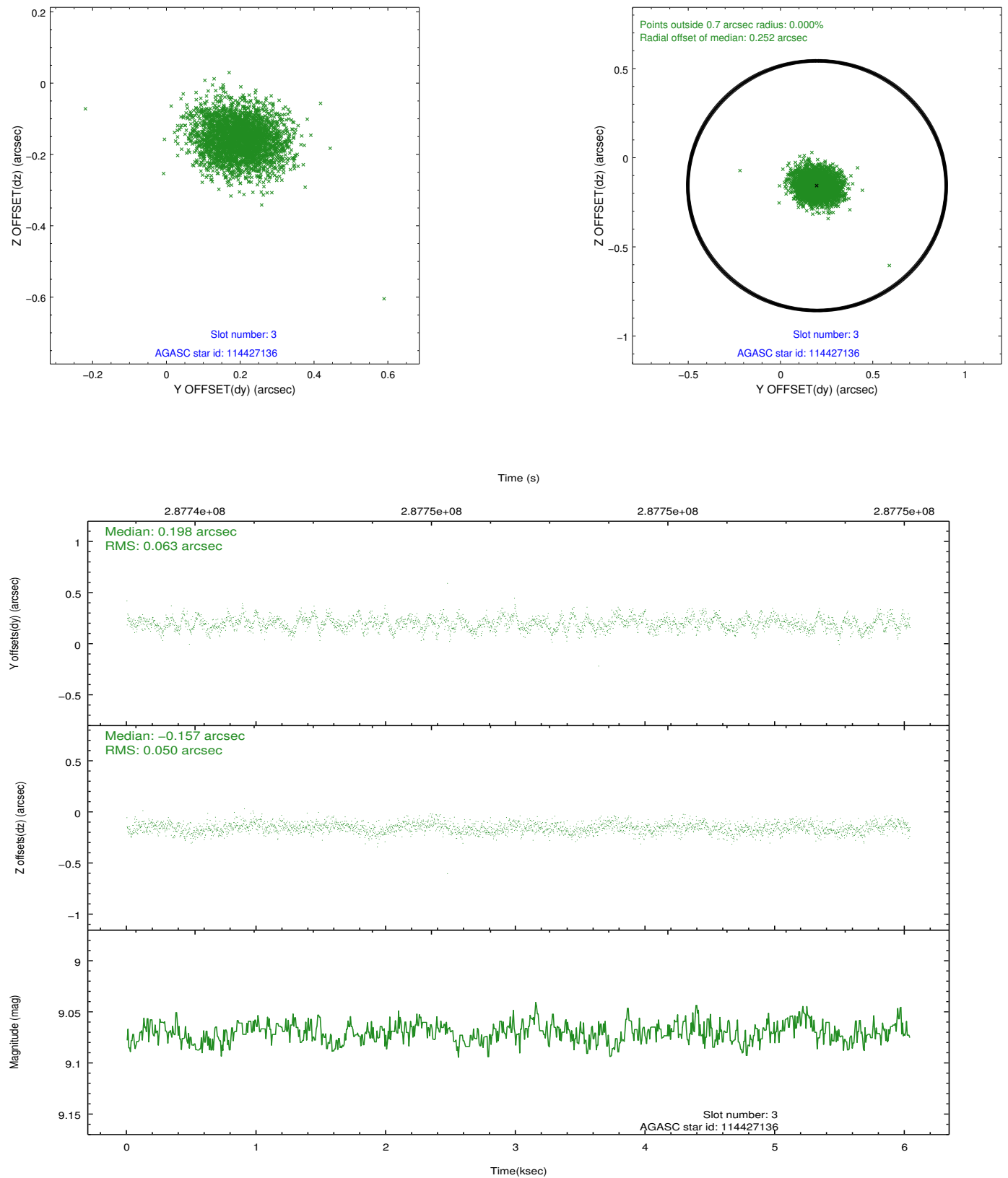


Slot Statistics

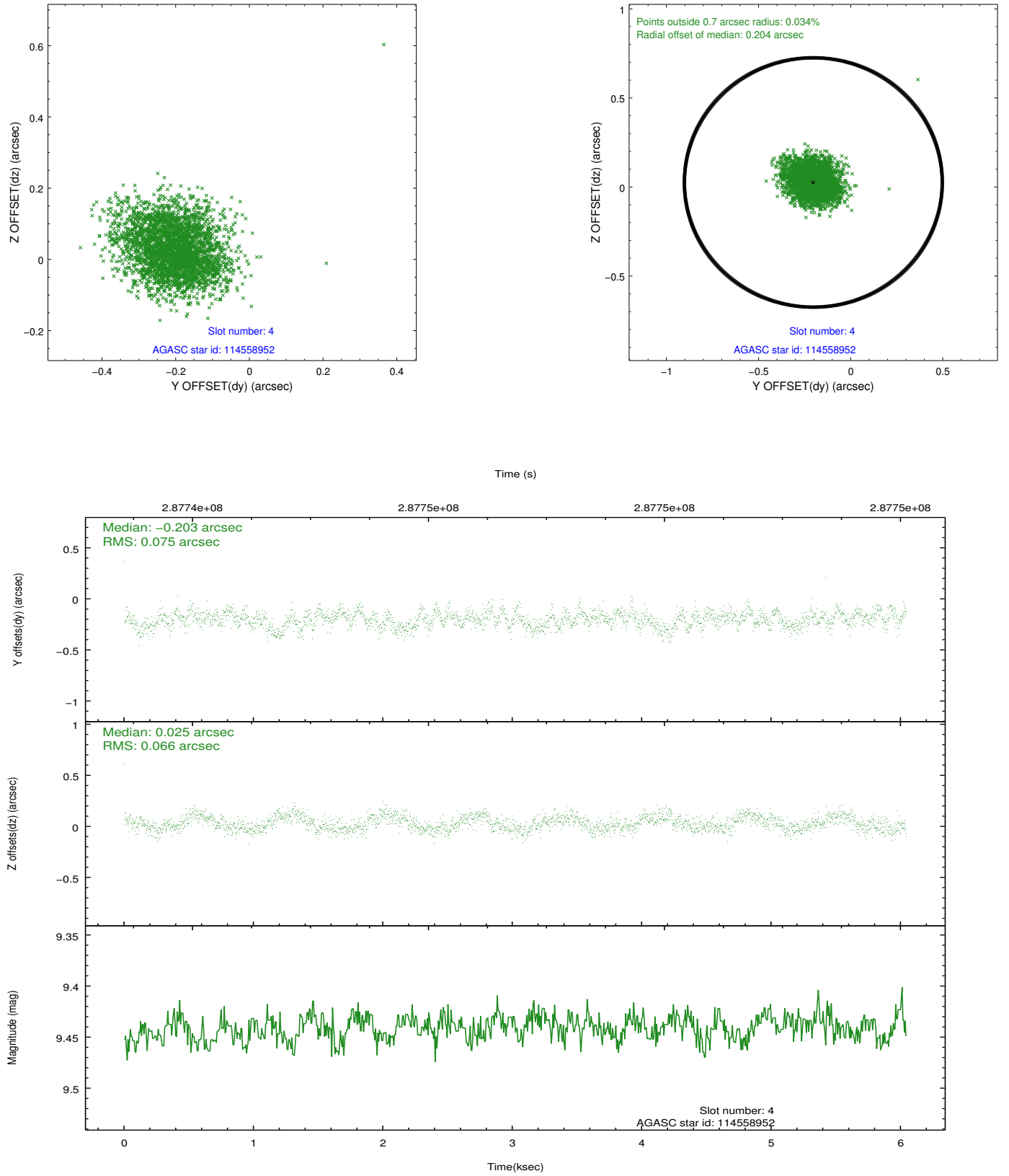
slot	status	id	mag	n_pts	med_dy	med_dz	dr1	dr2	ra	dec	mean_y	mean_z
0	FID	ACIS-S-2	7.09	1474	-0.086	-0.040	0.008	0.013	0.000000	0.000000	-767.54	-1736.06
1	FID	ACIS-S-4	7.20	1474	0.211	0.053	0.006	0.010	0.000000	0.000000	2145.57	171.51
2	FID	ACIS-S-5	7.22	1474	-0.156	-0.003	0.007	0.012	0.000000	0.000000	-1819.21	166.23
3	GUIDE	114427136	9.07	2946	0.198	-0.157	0.085	0.138	185.962563	8.343983	-2308.05	2273.47
4	GUIDE	114558952	9.44	2945	-0.203	0.025	0.105	0.172	186.929093	9.345397	1860.73	-451.65
5	GUIDE	114562600	8.76	2944	-0.020	0.048	0.087	0.134	186.973653	8.898661	310.36	-902.45
6	GUIDE	114565400	6.32	2947	0.005	0.015	0.063	0.107	186.925333	8.610343	-742.21	-923.87
7	GUIDE	114558824	9.75	2938	0.020	0.063	0.130	0.205	187.023305	9.331255	1872.57	-791.26

2.4 Star Slots

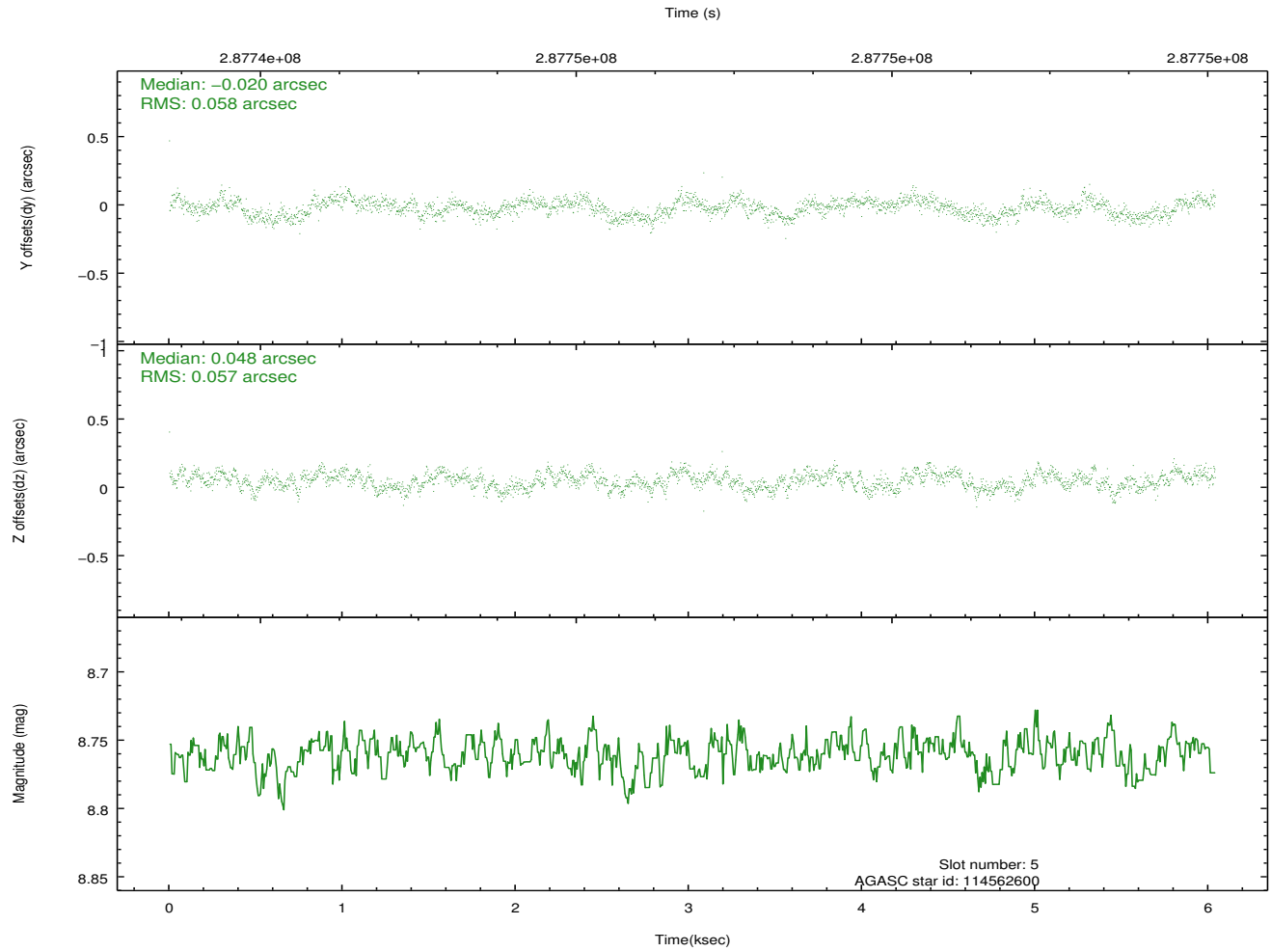
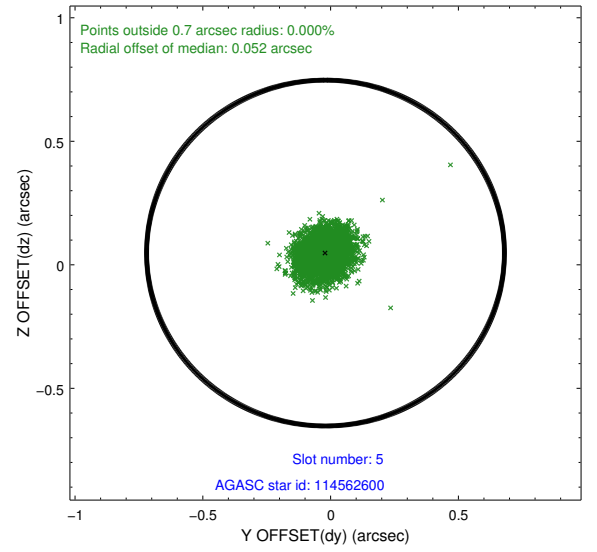
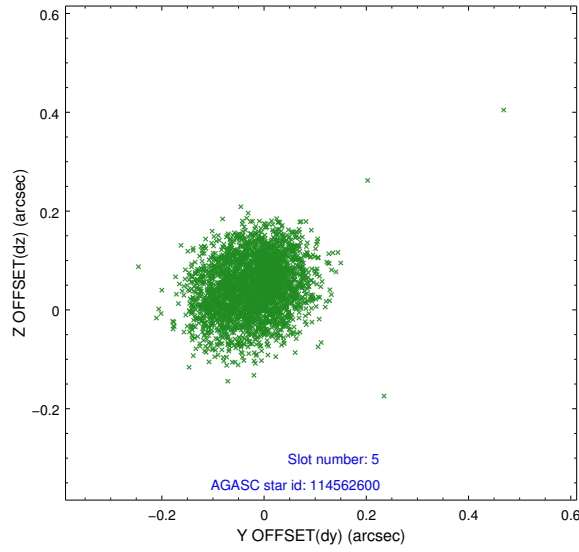
2.4.1 Slot 3



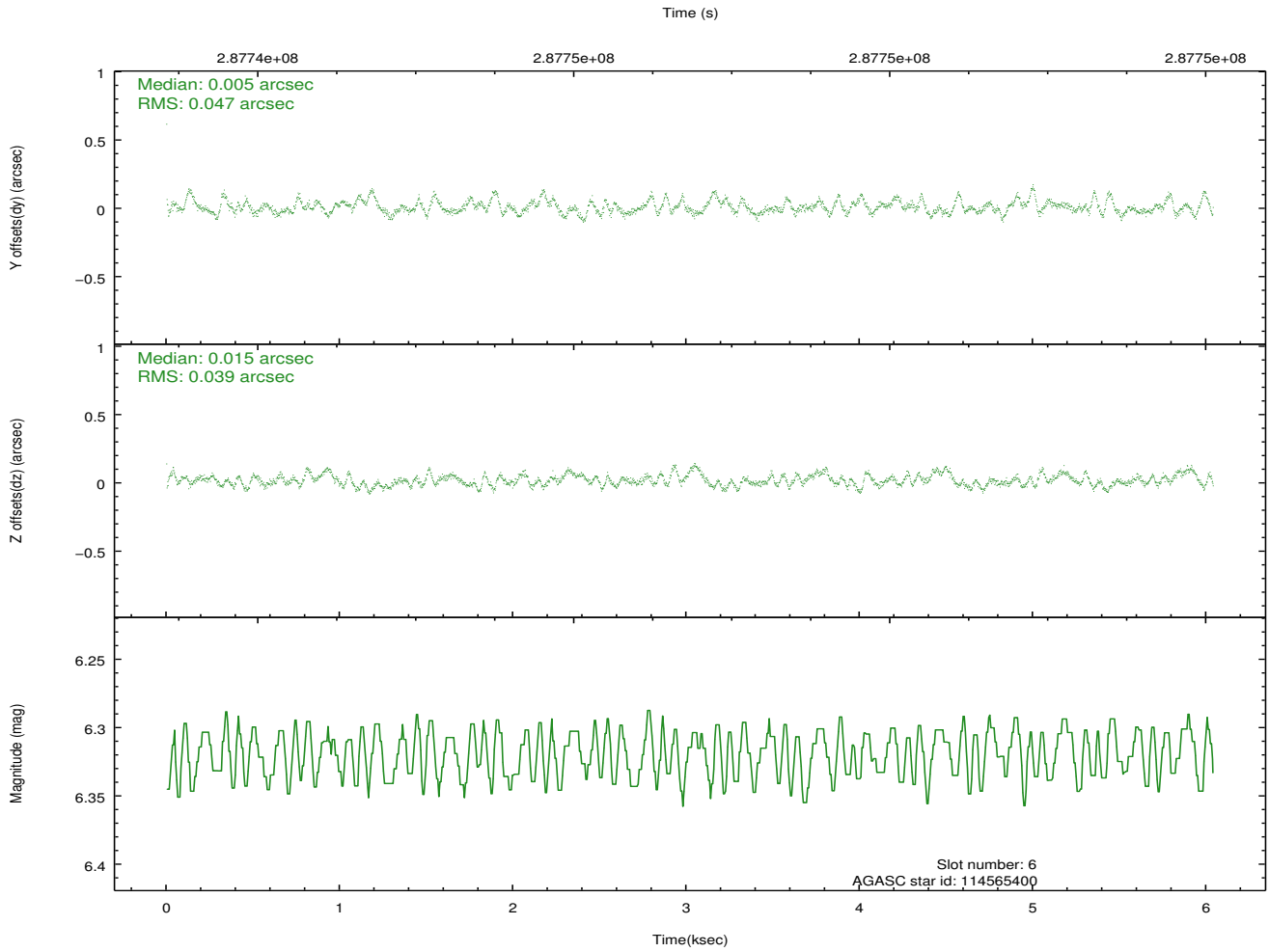
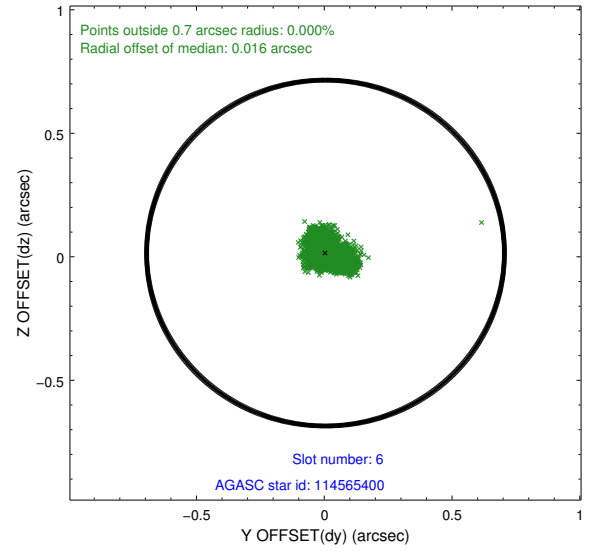
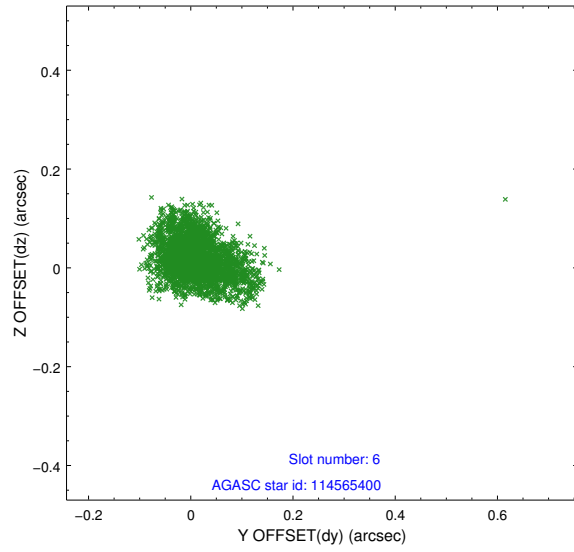
2.4.2 Slot 4



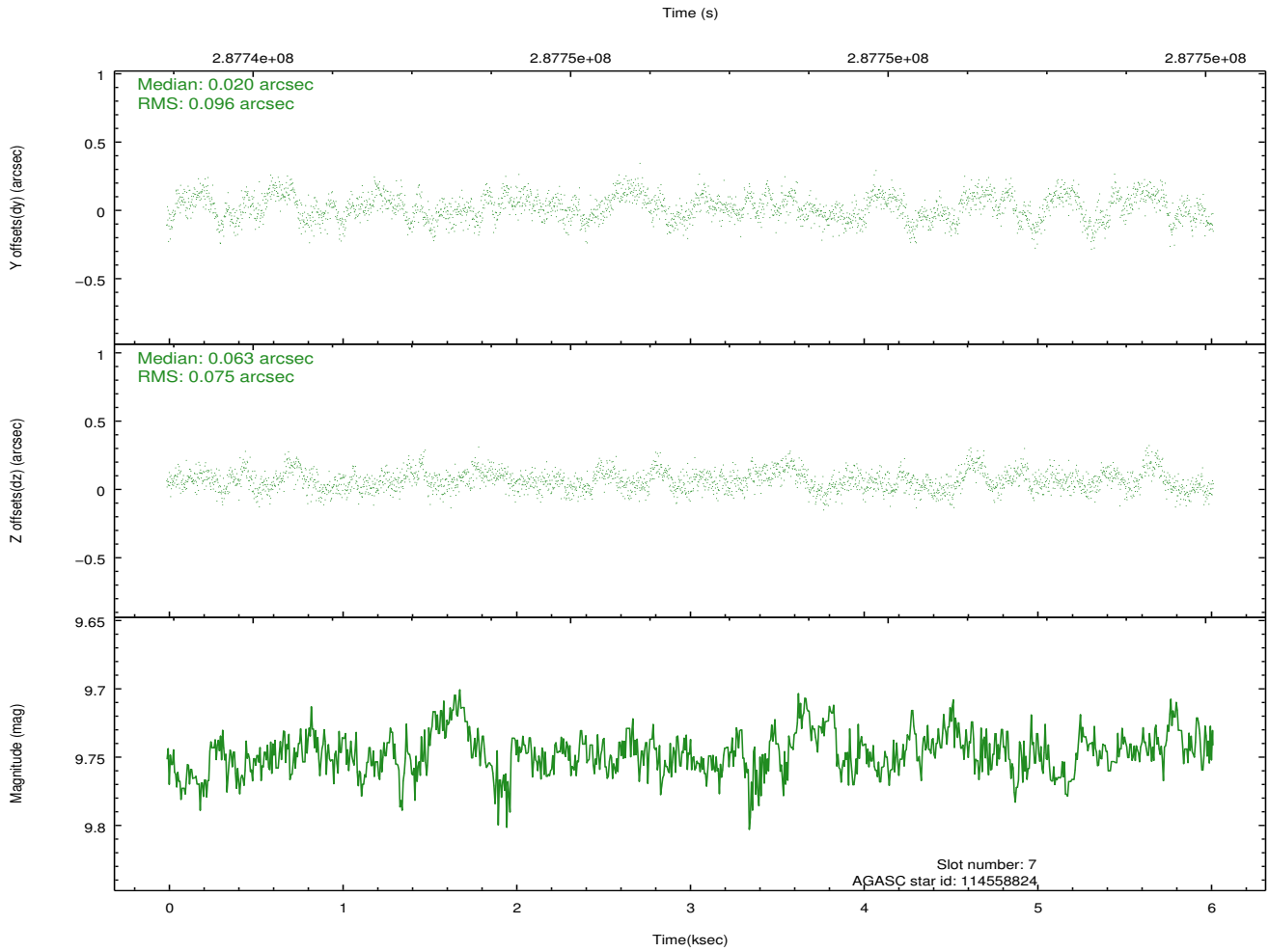
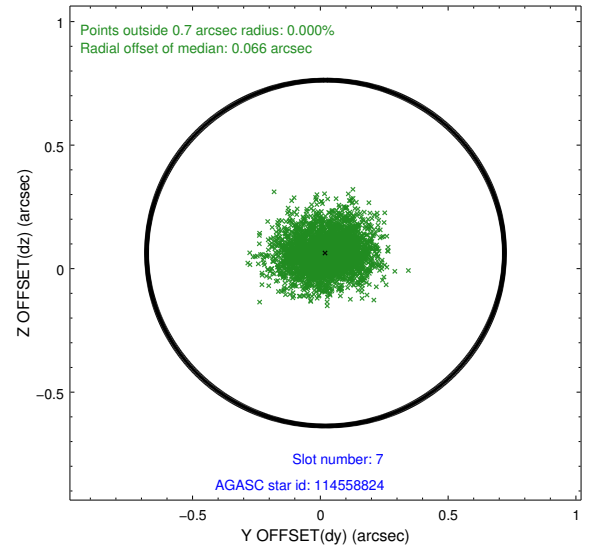
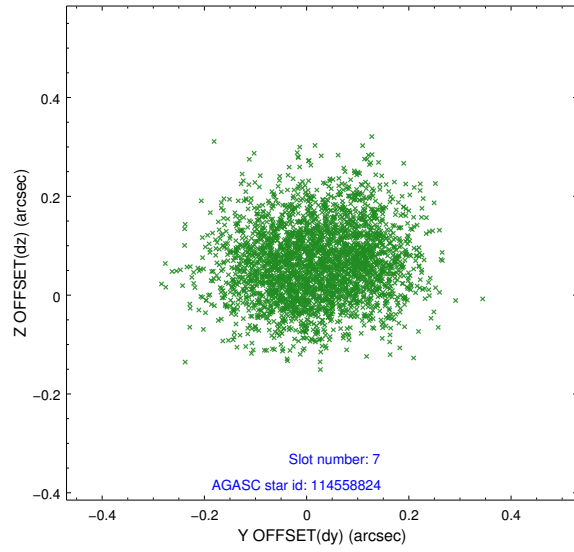
2.4.3 Slot 5



2.4.4 Slot 6

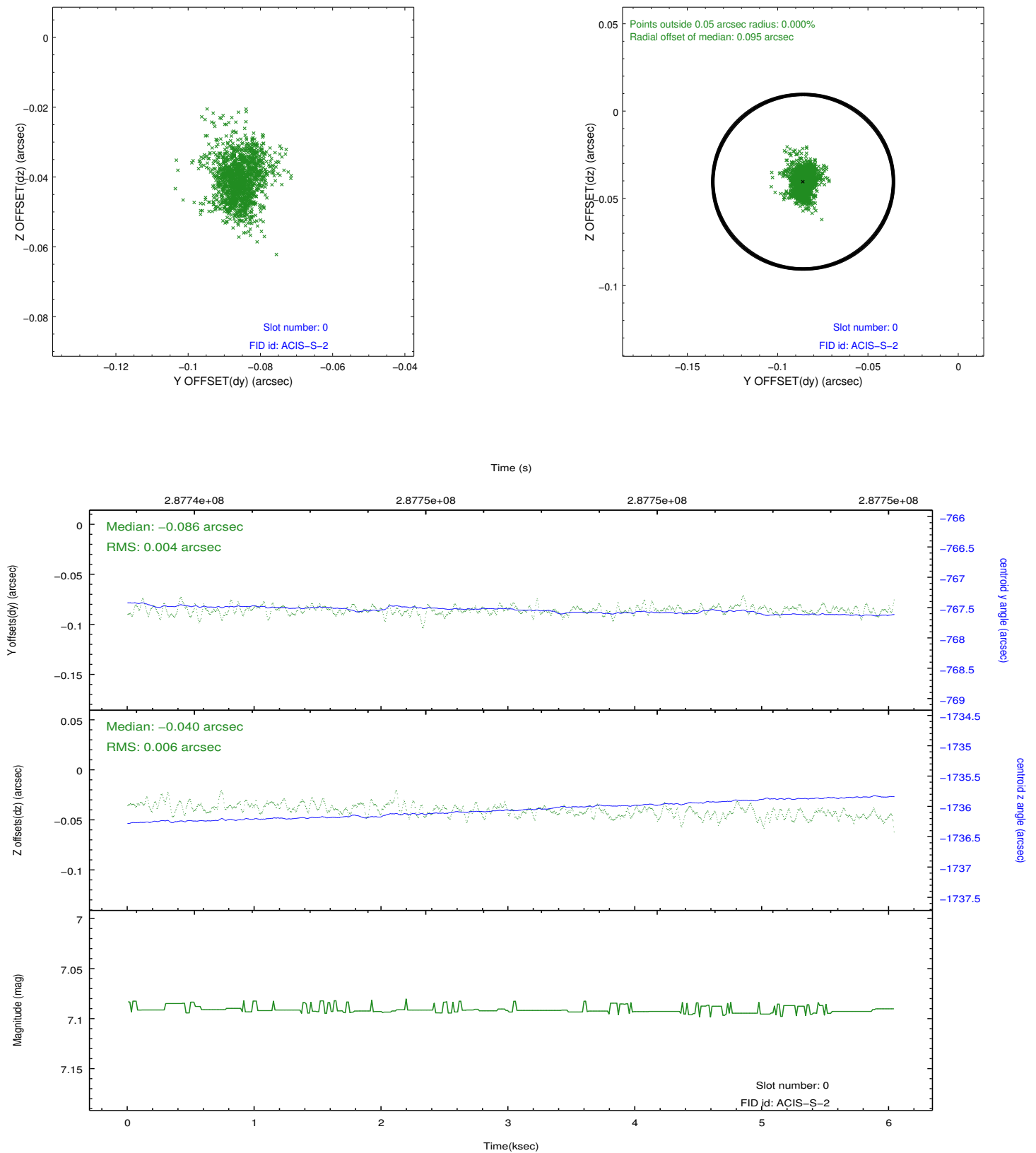


2.4.5 Slot 7

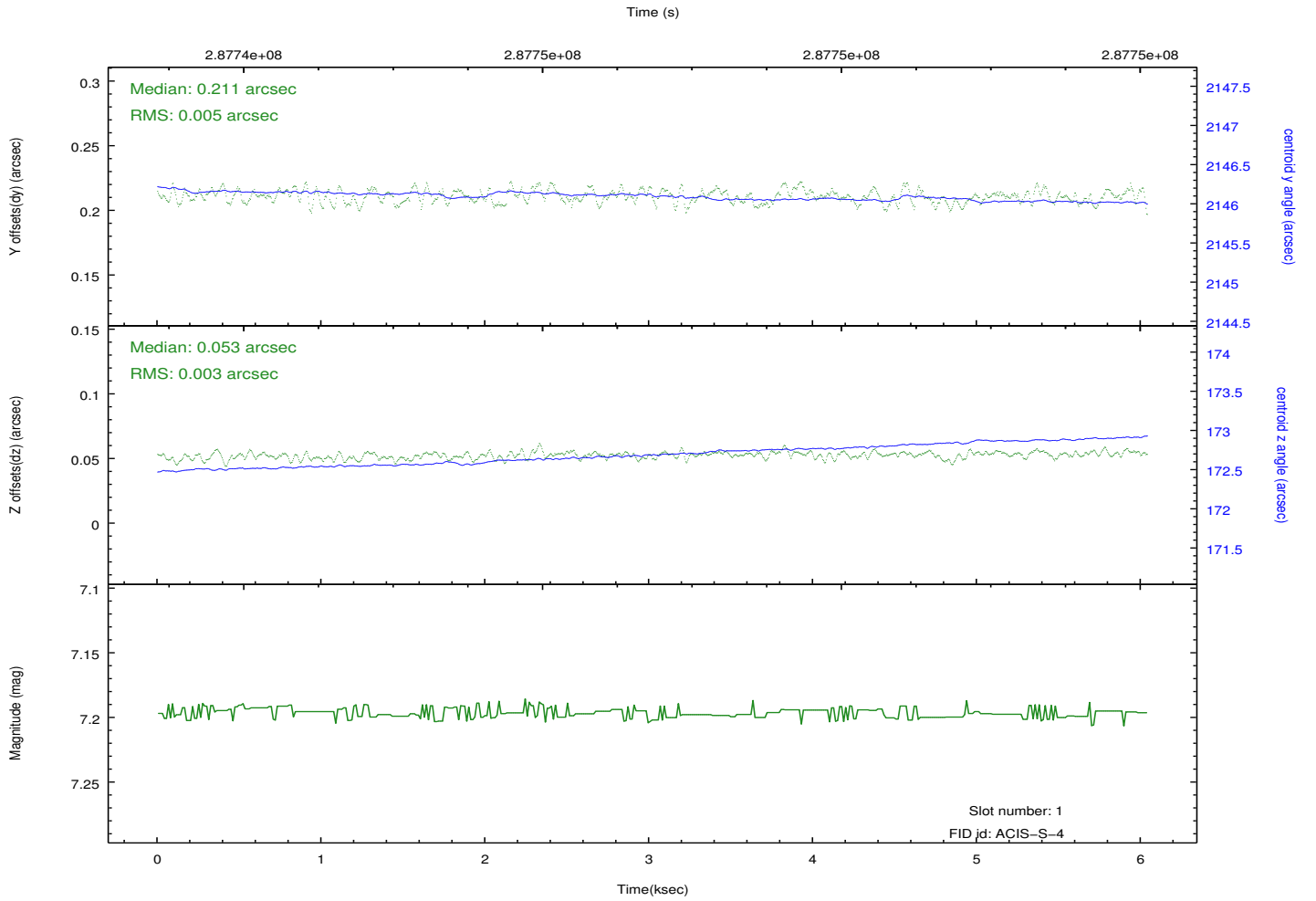
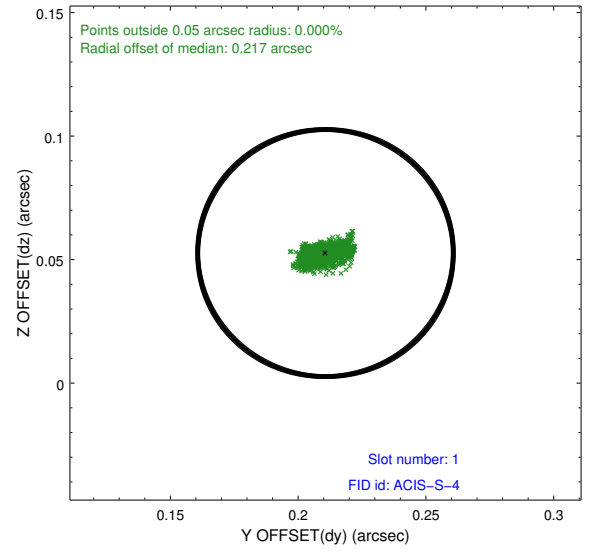
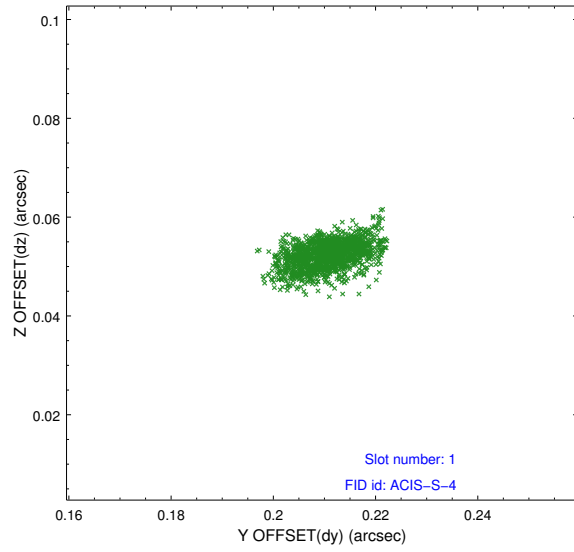


2.5 FID Slots

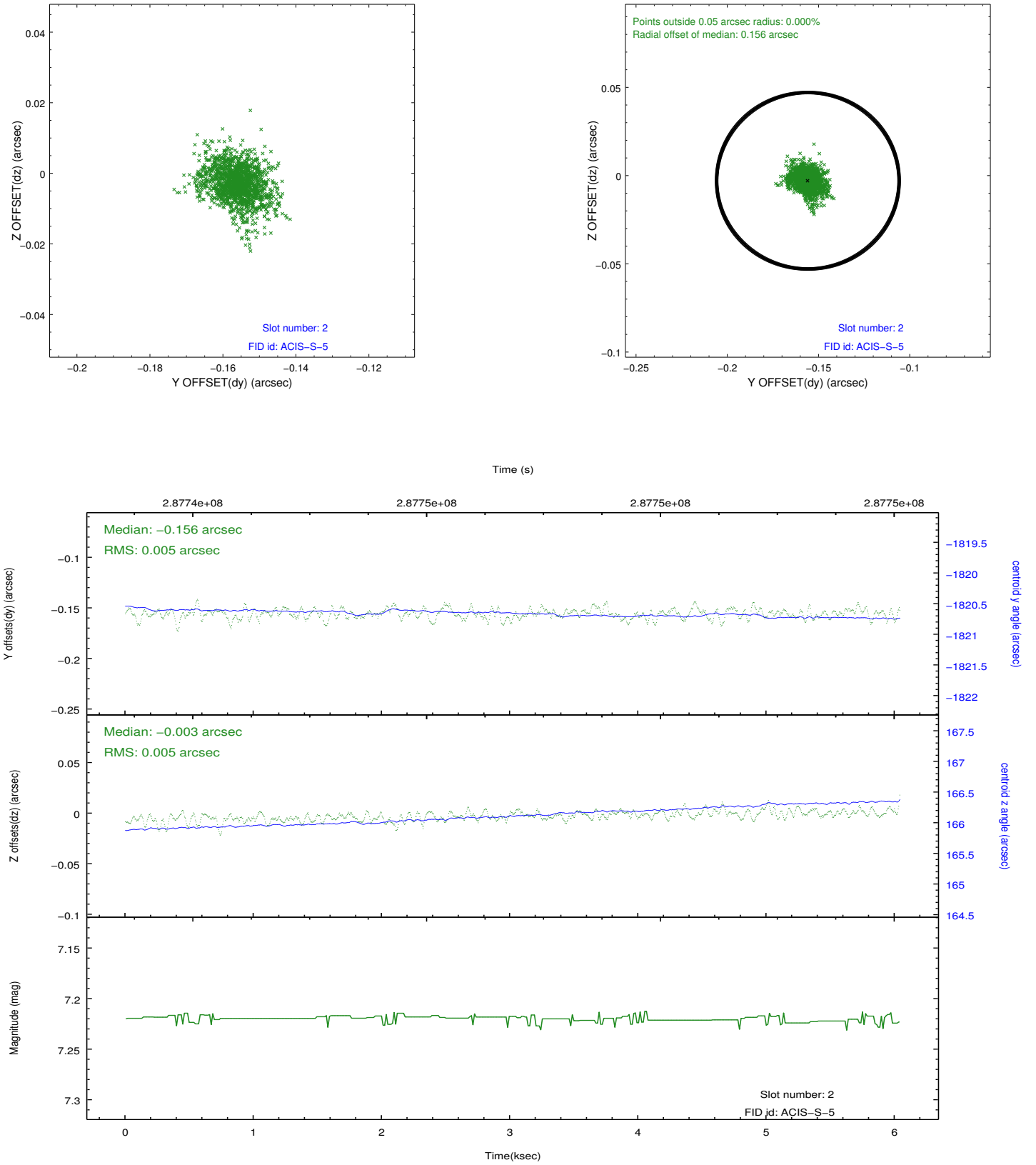
2.5.1 Slot 0



2.5.2 Slot 1



2.5.3 Slot 2



A Summary

A.1 Status

V&V Scientist	Beth Sundheim
V&V Date (YYYY-MM-DD)	2012.04.22
V&V Edition	1
V&V Disposition and Status	OK
V&V Charge Time	4.95359998

A.2 Comments