

# V&V Reference Report

## L2 ASCDS Version : 8.4.4

Observation 7815 - L2 Version 3  
Chandra X-Ray Center

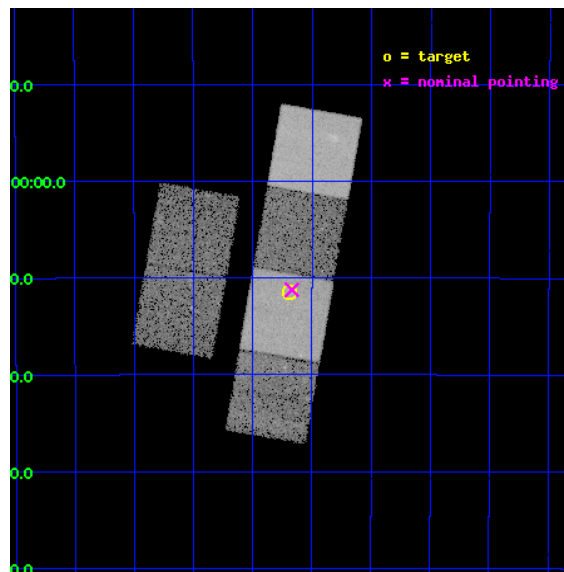
L2 Processing Date : Apr 20 2012

## Contents

<b>1</b>	<b>Front</b>	<b>2</b>
<b>2</b>	<b>OBI</b>	<b>3</b>
2.1	OBI . . . . .	3
2.1.1	Images . . . . .	3
2.1.2	Bias . . . . .	3
2.1.3	Parameters . . . . .	4
2.1.4	Events . . . . .	4
2.2	Compared Parameters . . . . .	5
2.3	Aspect . . . . .	6
2.4	Star Slots . . . . .	9
2.4.1	Slot 3 . . . . .	9
2.4.2	Slot 4 . . . . .	10
2.4.3	Slot 5 . . . . .	11
2.4.4	Slot 6 . . . . .	12
2.4.5	Slot 7 . . . . .	13
2.5	FID Slots . . . . .	14
2.5.1	Slot 0 . . . . .	14
2.5.2	Slot 1 . . . . .	15
2.5.3	Slot 2 . . . . .	16
<b>A</b>	<b>Summary</b>	<b>17</b>
A.1	Status . . . . .	17
A.2	Comments . . . . .	17

# 1 Front

seq_num	701479	Sequence number
obs_id	7815	Observation id
title	The Chandra-RBGS Survey of a Complete Sample of Luminous Infrared Galaxies	Proposal title
observer	Professor David Sanders	Principal investigator
object	IRAS F18293-3413	Source name
dtcycle	0	&#160
cycle	P	events from which exps? Prim/Second/Both
ra_targ	278.17125	Observer's specified target RA [deg]
dec_targ	-34.190972	Observer's specified target Dec [deg]
ra_nom	278.16735201042	Nominal RA [deg]
dec_nom	-34.187350262543	Nominal Dec [deg]
roll_nom	99.910442445819	Nominal Roll [deg]
revision	3	Processing version of data
ontime	14219.809947491	Sum of GTIs [s]
livetime	14039.750151794	Livetime [s]
ontime2	14219.850987494	Sum of GTIs [s]
ontime3	14216.445837259	Sum of GTIs [s]
ontime5	14219.768907487	Sum of GTIs [s]
ontime6	14216.487026691	Sum of GTIs [s]
ontime7	14219.809947491	Sum of GTIs [s]
ontime8	14216.404797256	Sum of GTIs [s]
l2events	178511	Number of level 2 events

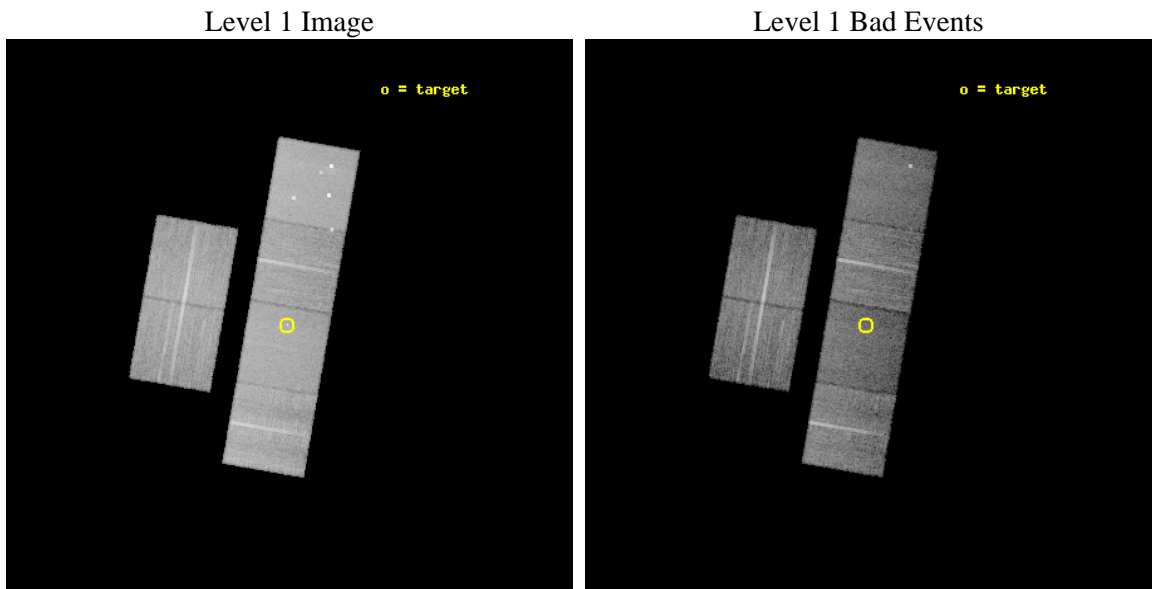




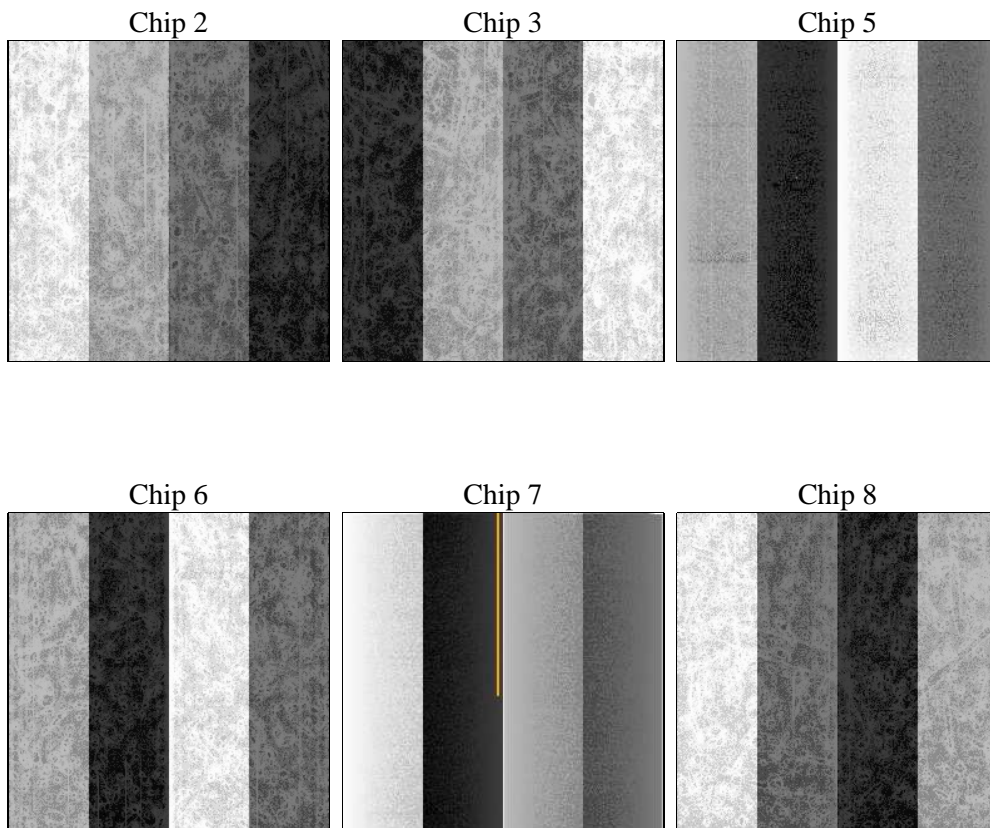
## 2 OBI

### 2.1 OBI

#### 2.1.1 Images



#### 2.1.2 Bias



### 2.1.3 Parameters

obi_num	0	Obi number	sched_exp_time	14174.526000	[s] Scheduled observation exposure time
ascdsver	8.4.4	Processing system revision	ontime	14219.809947491	Sum of GTIs [s]
caldsver	4.4.9	&#160	ontime2	14219.850987494	Sum of GTIs [s]
date	2012-04-20T14:51:32	Date and time of file creation	ontime3	14216.445837259	Sum of GTIs [s]
revision	3	Processing version of data	ontime5	14219.768907487	Sum of GTIs [s]
			ontime6	14216.487026691	Sum of GTIs [s]
			ontime7	14219.809947491	Sum of GTIs [s]
			ontime8	14216.404797256	Sum of GTIs [s]
			l1events	769401	Number of level 1 events

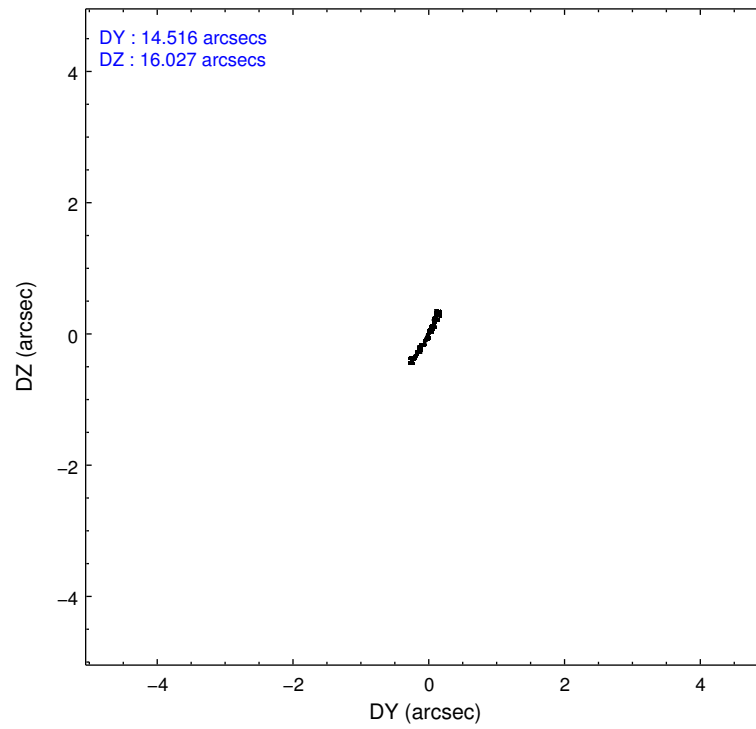
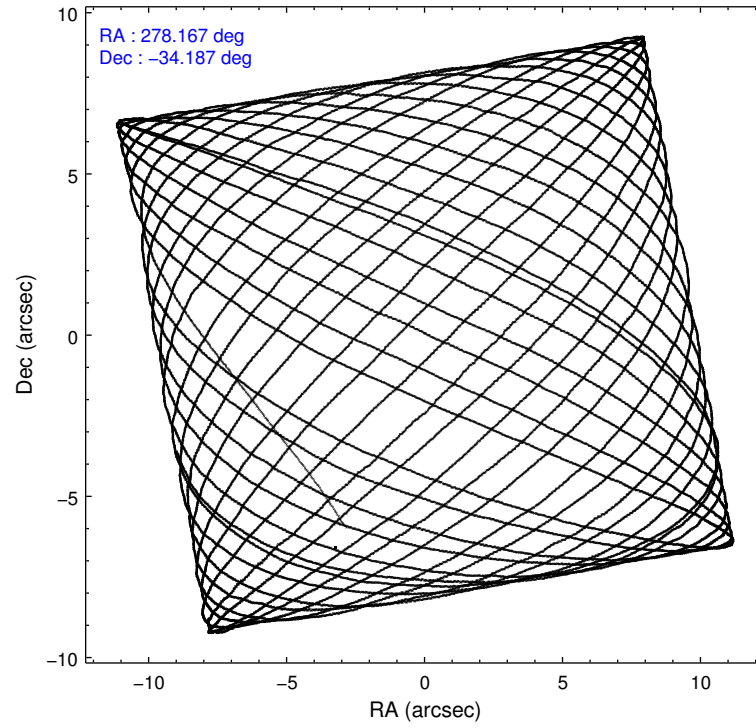
### 2.1.4 Events

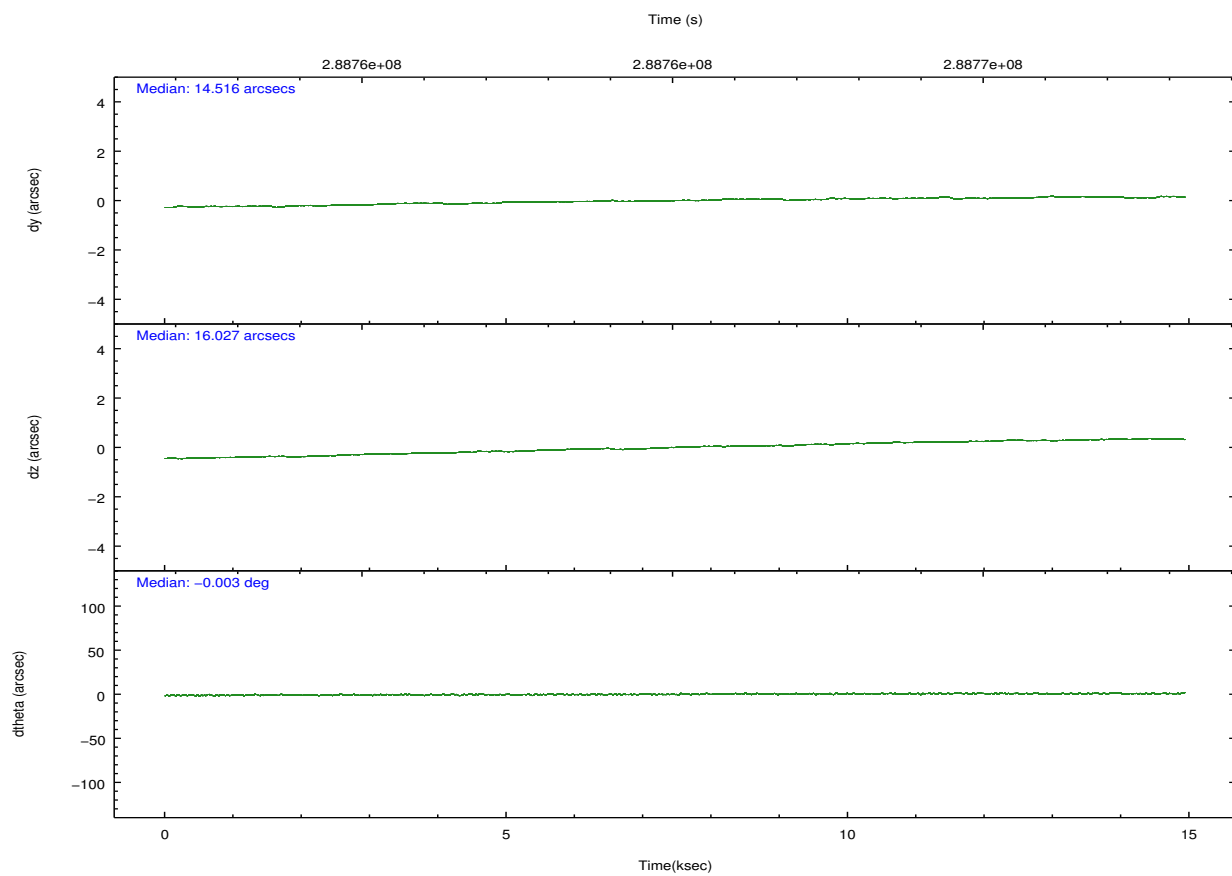
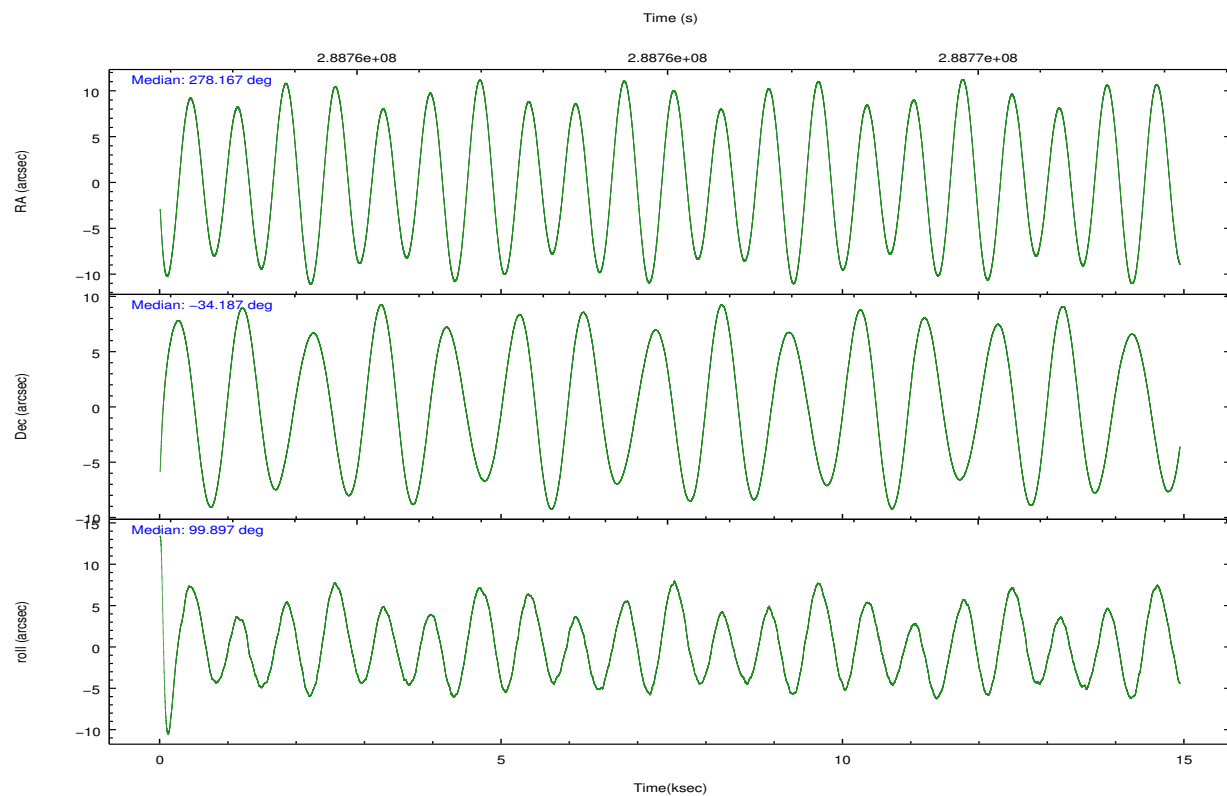
	ccd 2	ccd 3	ccd 5	ccd 6	ccd 7	ccd 8		ccd 2	ccd 3	ccd 5	ccd 6	ccd 7	ccd 8
level 1 events	121084	108200	162905	109675	127297	140240	grade 0 events	5053	4643	14138	5267	6619	11864
rejected events	108878	96734	77274	96711	66258	104430		4%	4%	8%	4%	5%	8%
rejected %	89%	89%	47%	88%	52%	74%	grade 1 events	74	79	322	76	162	114
								0%	0%	0%	0%	0%	0%
							grade 2 events	2713	2331	24350	2659	12871	7679
								2%	2%	14%	2%	10%	5%
							grade 3 events	1168	1191	3708	1297	5696	3722
								0%	1%	2%	1%	4%	2%
							grade 4 events	1187	1214	3579	1266	5709	3474
								0%	1%	2%	1%	4%	2%
							grade 5 events	3621	4274	12432	4379	13096	6399
								2%	3%	7%	3%	10%	4%
							grade 6 events	2092	2089	39895	2481	30172	9080
								1%	1%	24%	2%	23%	6%
							grade 7 events	105176	92379	64481	92250	52972	97908
								86%	85%	39%	84%	41%	69%

## 2.2 Compared Parameters

Parameter	Planned	Actual	Parameter	Planned	Actual
Instrument	ACIS	ACIS	Obspar format version number	7	7
Detector	ACIS-235678	ACIS-235678	Obspar file type	PREDICTED	ACTUAL
Grating	NONE	NONE	Obspar update status	NONE	UPDATED
Data mode	VFAINT	VFAINT	CCD I0 on	N	N
Observation mode	POINTING	POINTING	CCD I1 on	N	N
[deg] Pointing RA	278.188920	278.1673520104177	CCD I2 on	O1	Y
[deg] Pointing Dec	-34.208072	-34.18735026254348	CCD I3 on	O2	Y
[deg] Pointing Roll	99.765920	99.91044244581938	CCD S0 on	N	N
[mm] SIM focus pos	-0.684267	-0.6828225247311905	CCD S1 on	O3	Y
[mm] SIM defocus	0	0.001444936568705701	CCD S2 on	O5	Y
[mm] SIM translation stage pos	-190.132523	-190.1425803651734	CCD S3 on	Y	Y
[mm] SIM translation stage offset	0	0.01005778216563158	CCD S4 on	O4	Y
[s] Observation start time (MET)	288758335.184000	288757040.04341	CCD S5 on	N	N
Observation start date	2007-02-25T02:37:50	2007-02-25T02:17:20	Number of optional ACIS chips dropped	0	0
[s] Observation end time (MET)	288772510.184000	288772734.84415	On-chip summing requested	N	N
Observation end date	2007-02-25T06:34:05	2007-02-25T06:38:54	Subarray requested	NONE	NONE
Read mode	TIMED	TIMED	Alternating exposures requested	N	N
			[s] Primary exposure time	0.000000	3.2

## 2.3 Aspect



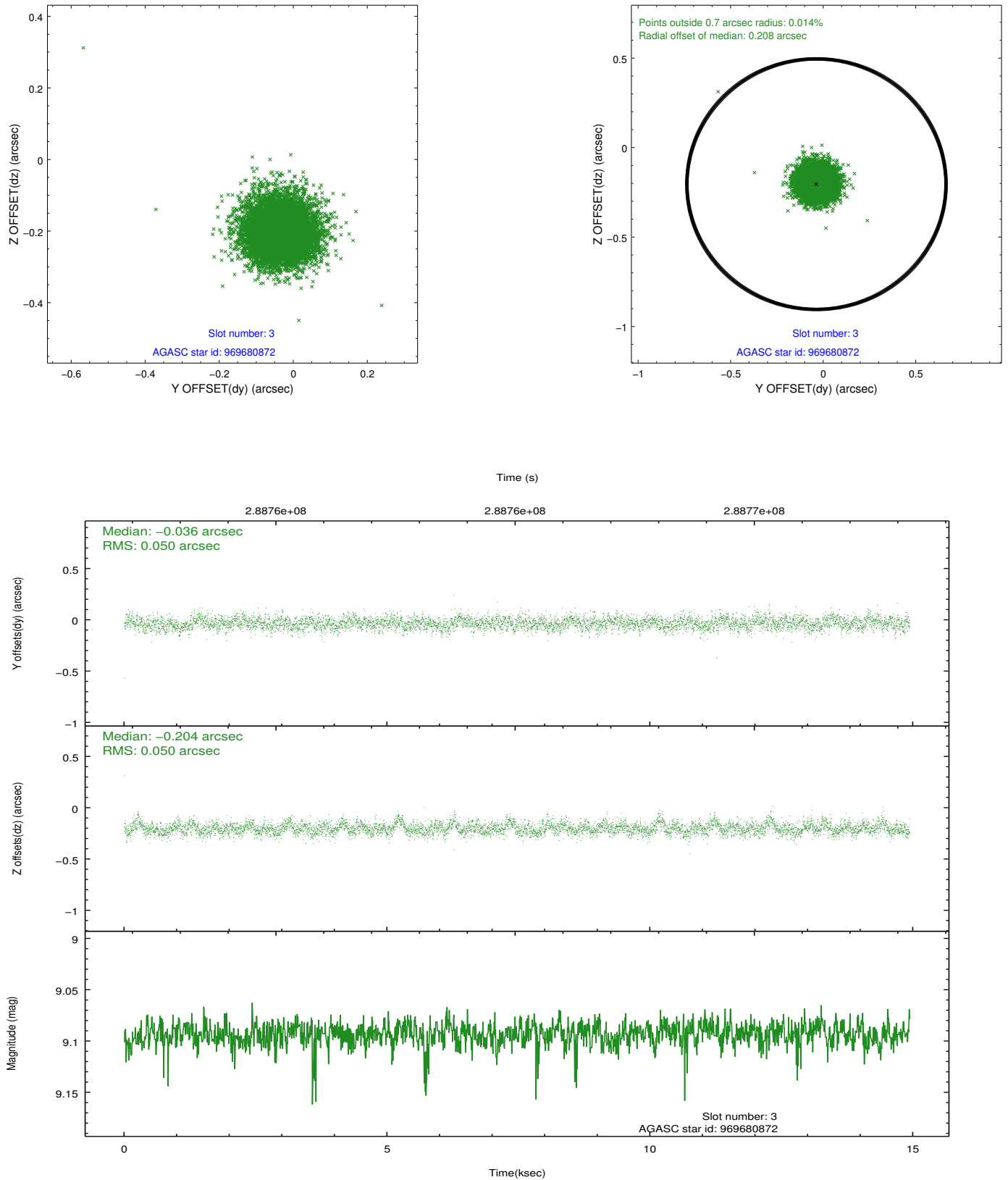


### Slot Statistics

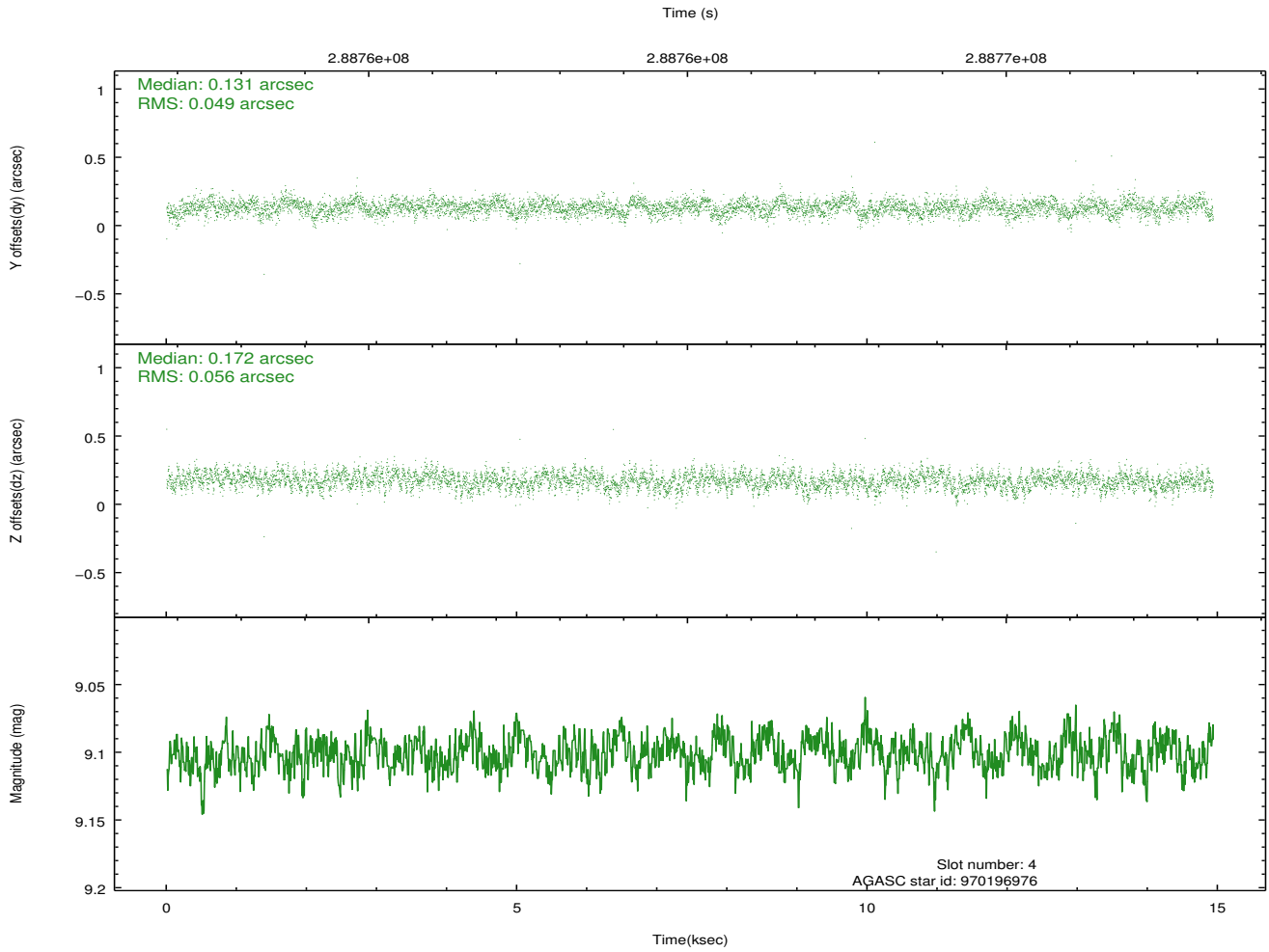
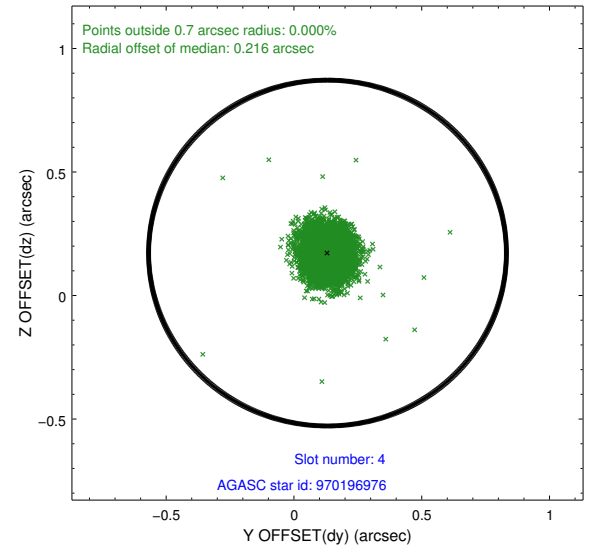
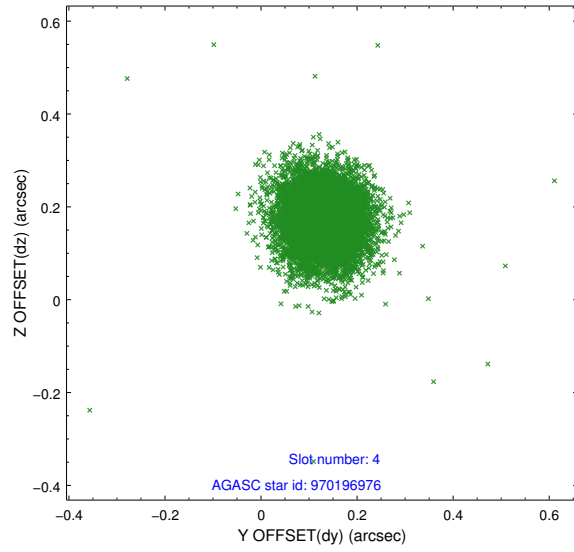
slot	status	id	mag	n_pts	med_dy	med_dz	dr1	dr2	ra	dec	mean_y	mean_z
0	FID	ACIS-S-2	7.09	3643	-0.120	-0.084	0.006	0.010	0.000000	0.000000	-767.61	-1737.43
1	FID	ACIS-S-4	7.20	3643	0.132	0.058	0.006	0.011	0.000000	0.000000	2145.82	170.81
2	FID	ACIS-S-6	7.33	3643	-0.041	0.033	0.007	0.012	0.000000	0.000000	394.90	808.57
3	GUIDE	969680872	9.09	7281	-0.036	-0.204	0.074	0.122	277.523895	-33.661611	2270.25	1631.40
4	GUIDE	970196976	9.10	7279	0.131	0.172	0.078	0.126	278.715777	-33.915224	769.12	-1728.97
5	GUIDE	970197832	9.13	7275	-0.058	0.230	0.070	0.113	278.492506	-33.811039	1253.83	-1137.07
6	GUIDE	970201032	8.27	7283	0.013	0.122	0.058	0.091	278.230903	-33.868597	1183.61	-330.95
7	GUIDE	970203720	7.51	7284	-0.053	-0.321	0.057	0.090	277.407910	-33.933973	1359.26	2132.85

## 2.4 Star Slots

### 2.4.1 Slot 3

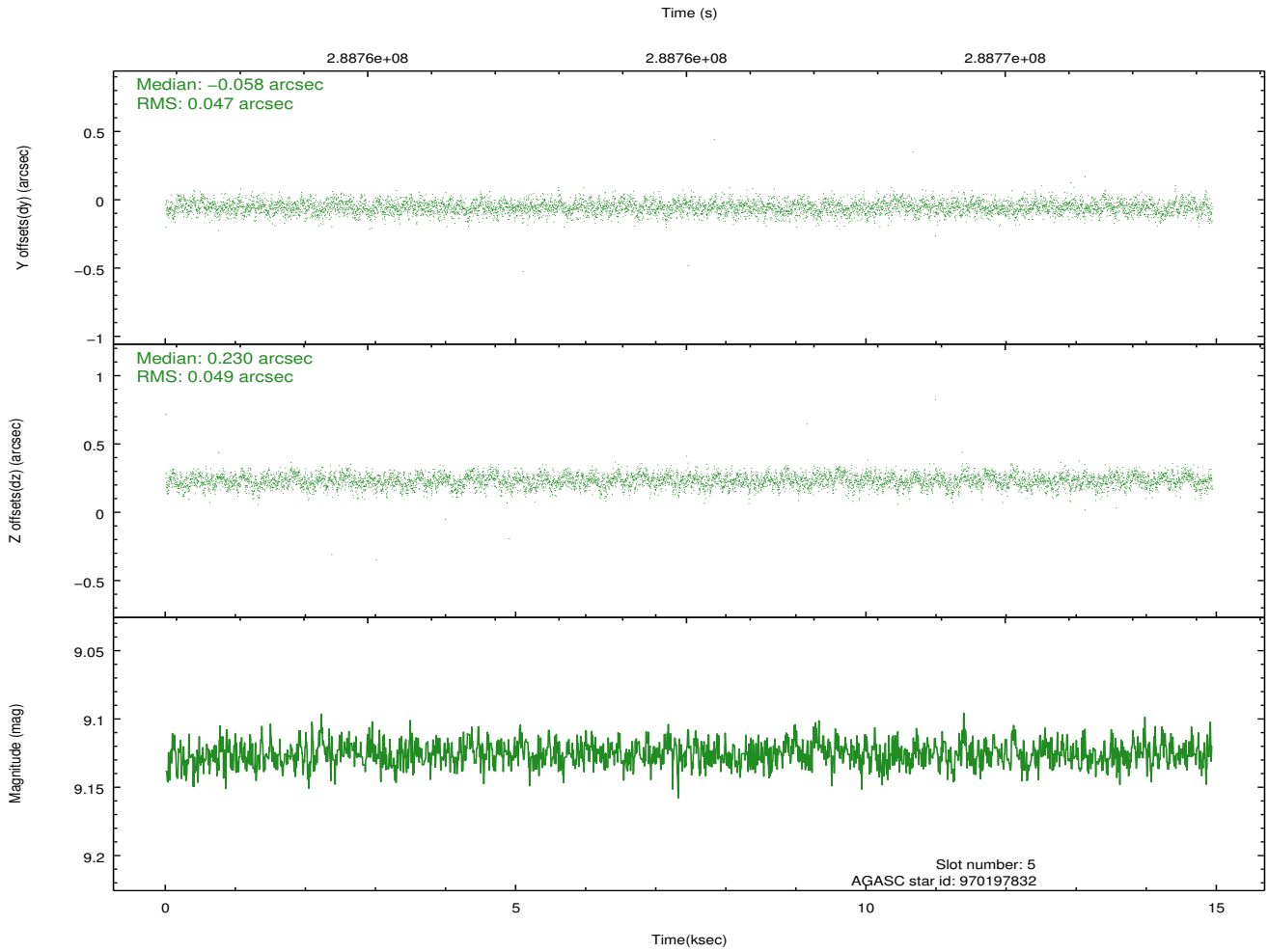
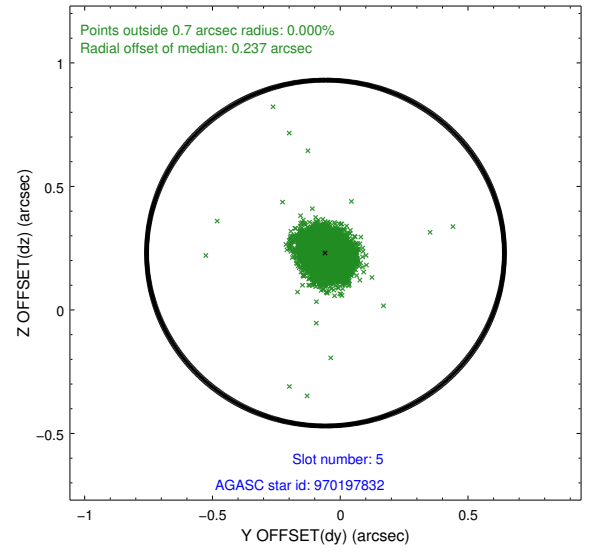
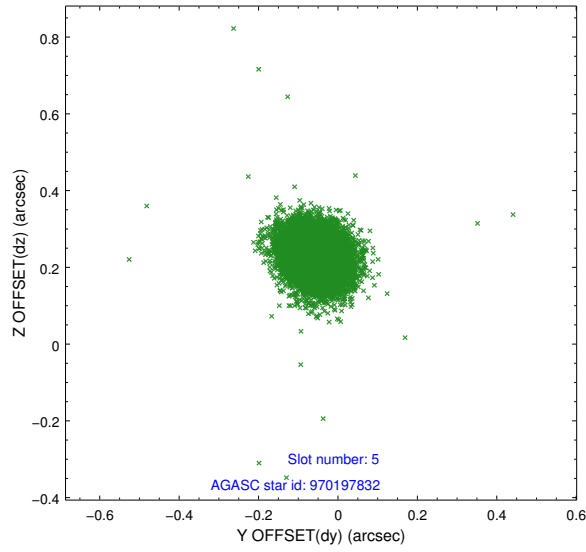


## 2.4.2 Slot 4

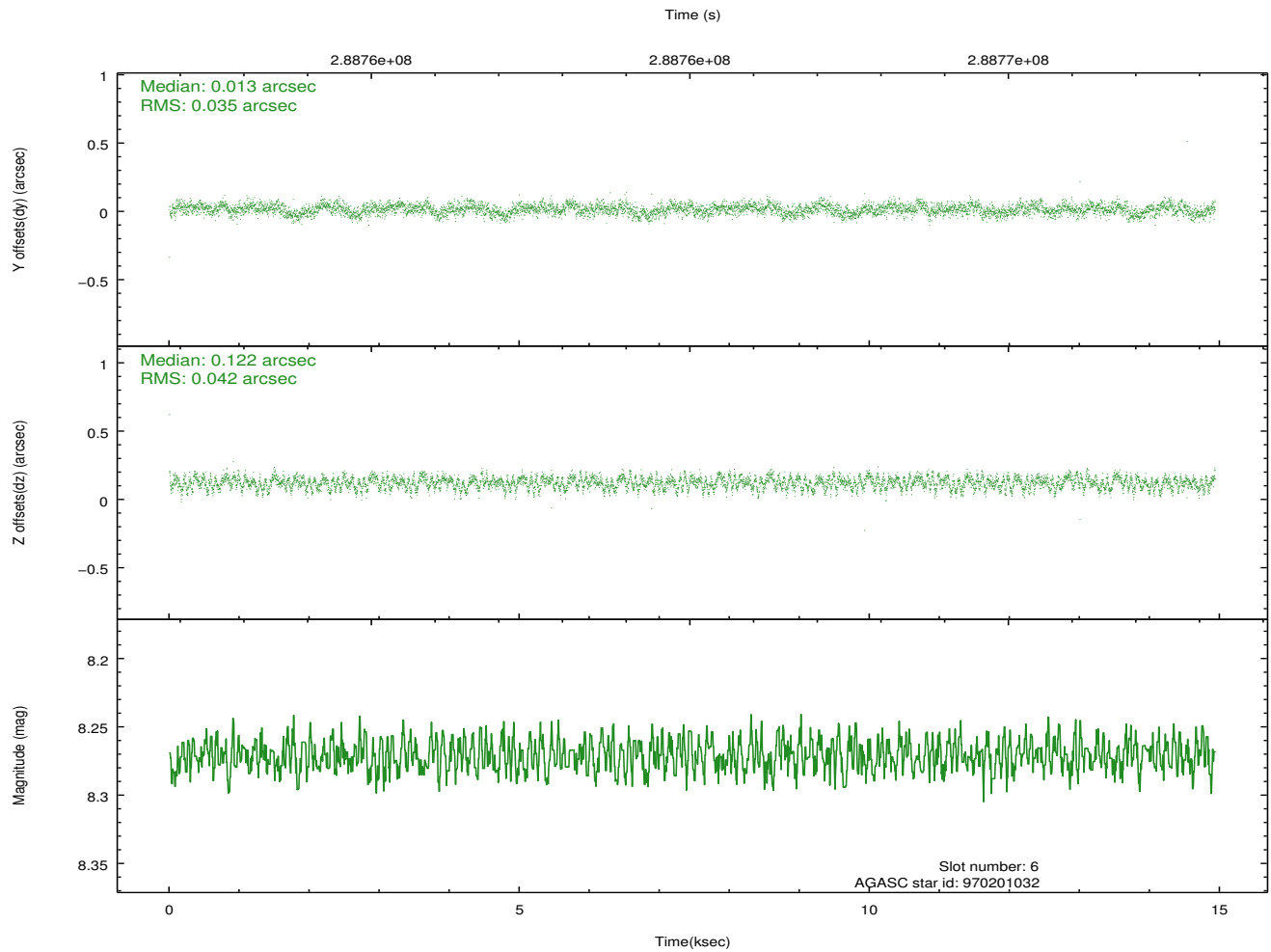
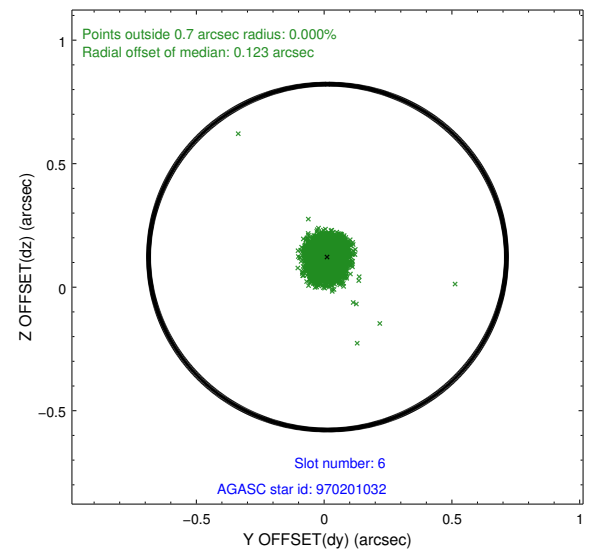
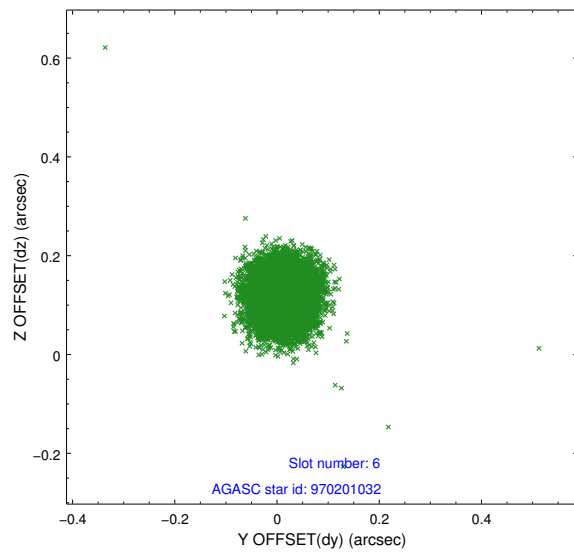




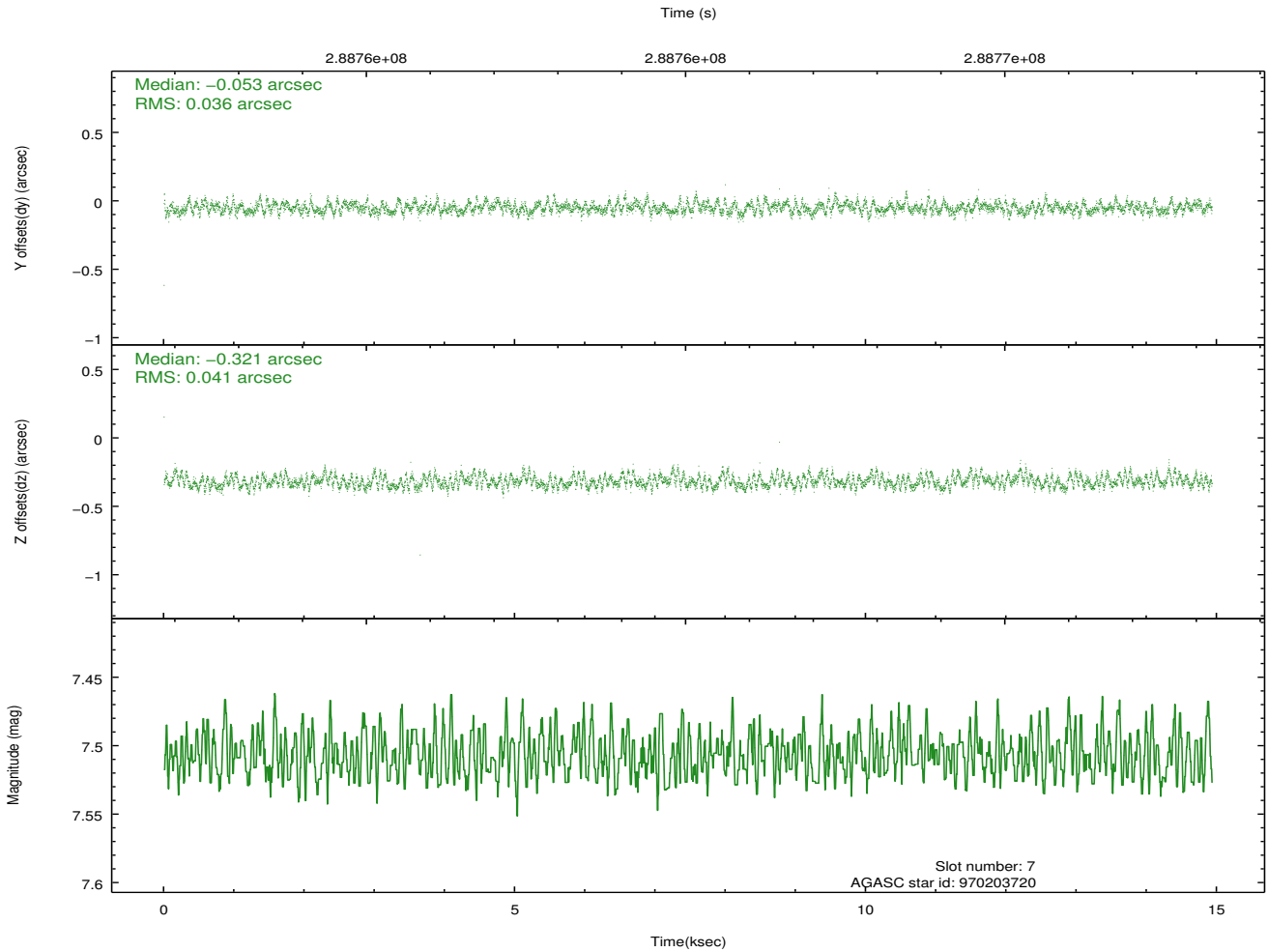
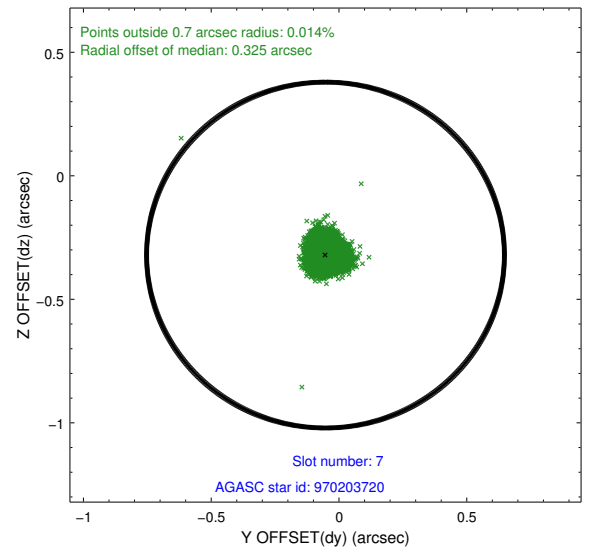
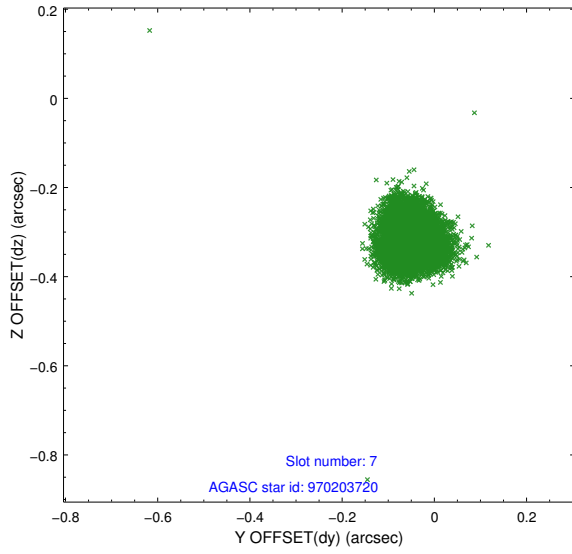
### 2.4.3 Slot 5



## 2.4.4 Slot 6

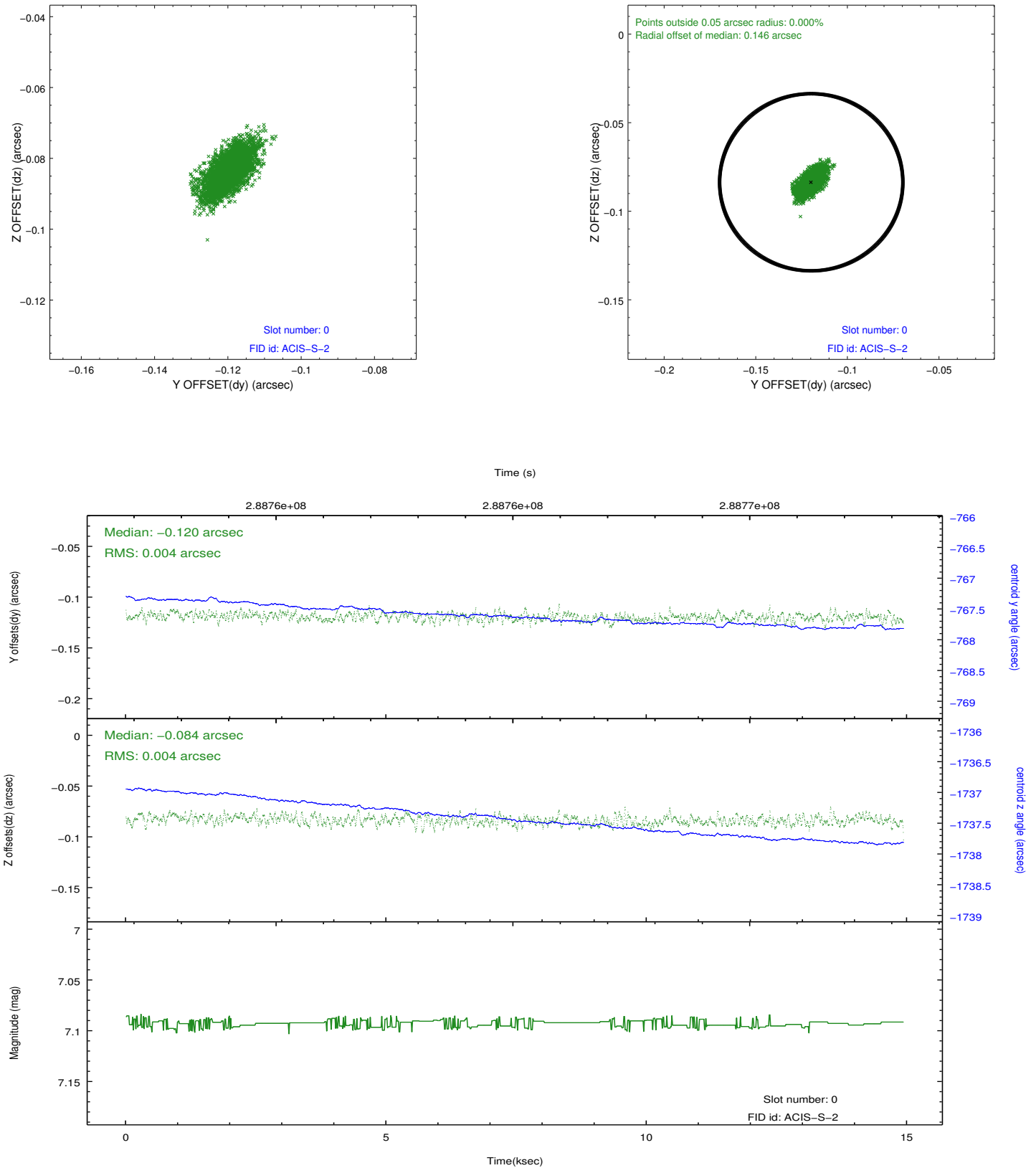


## 2.4.5 Slot 7

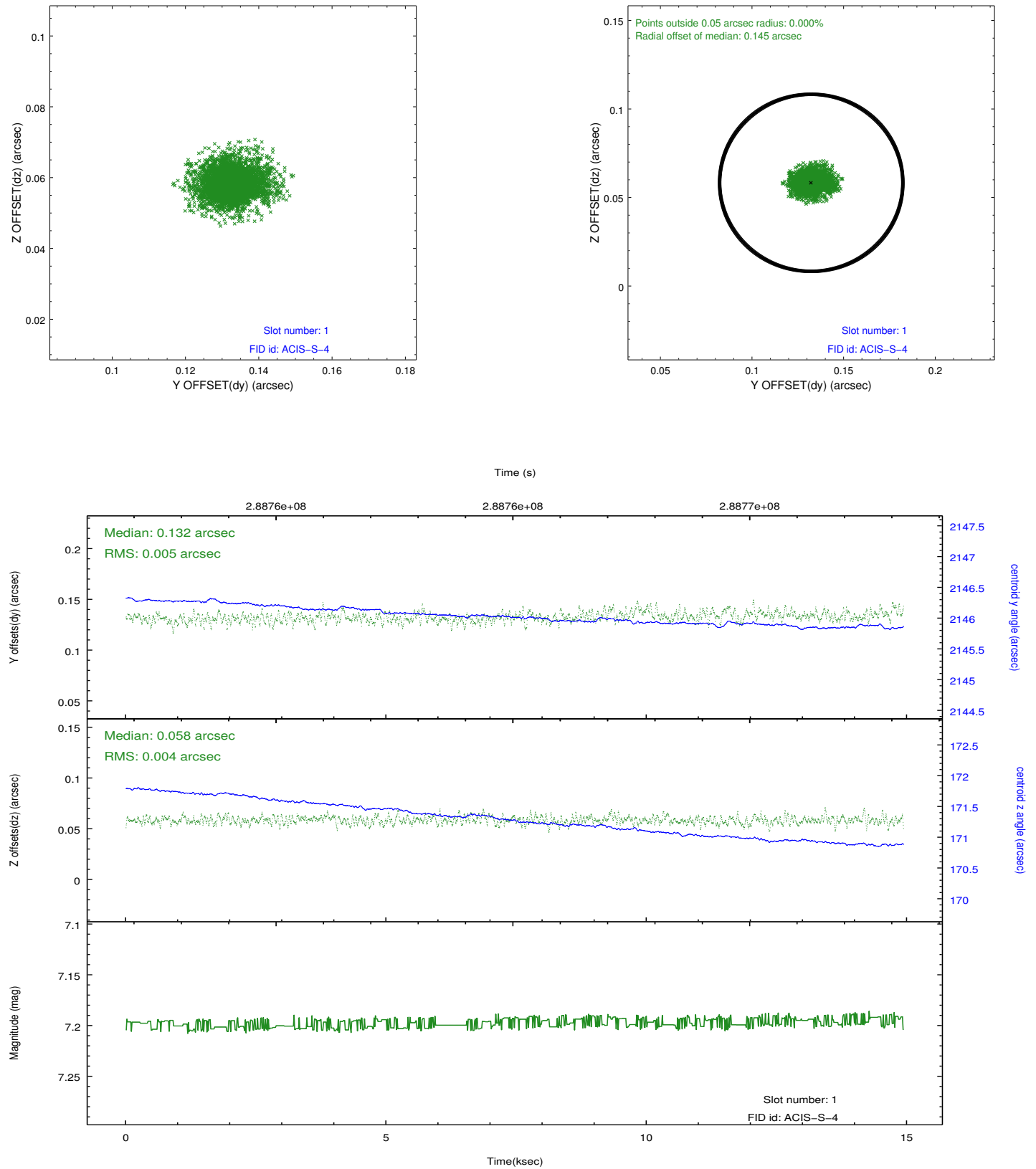


## 2.5 FID Slots

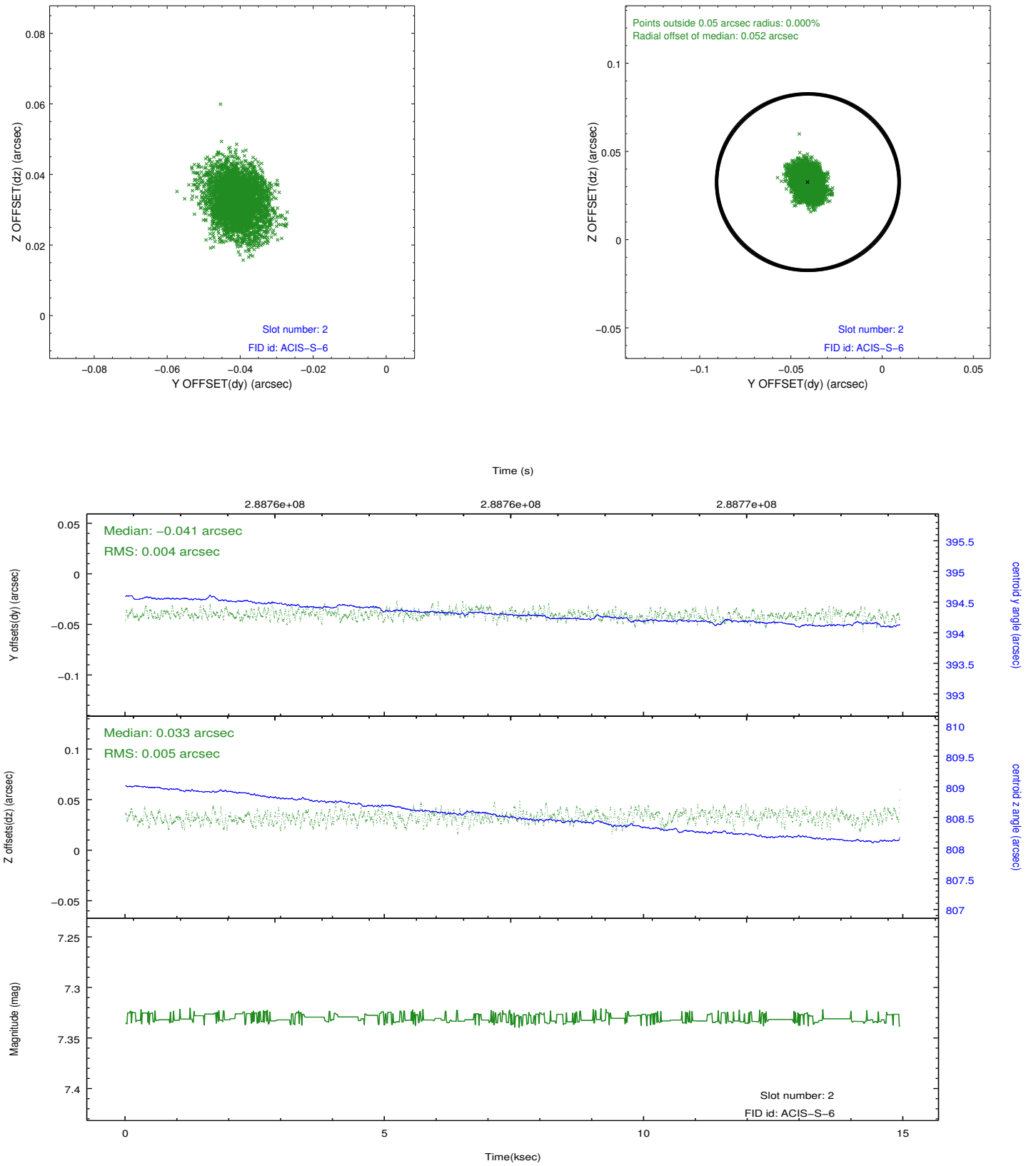
### 2.5.1 Slot 0



## 2.5.2 Slot 1



### 2.5.3 Slot 2



## A Summary

### A.1 Status

V&V Scientist	Beth Sundheim
V&V Date (YYYY-MM-DD)	2012.04.22
V&V Edition	1
V&V Disposition and Status	OK
V&V Charge Time	14.2207999

### A.2 Comments