

V&V Reference Report

L2 ASCDS Version : 8.4.4

Observation 7808 - L2 Version 2
Chandra X-Ray Center

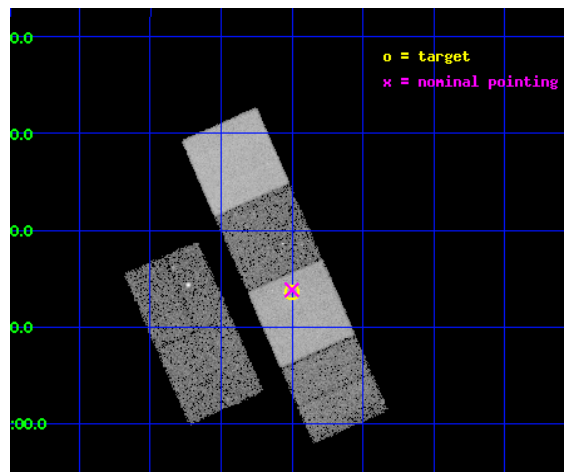
L2 Processing Date : May 8 2012

Contents

1	Front	2
2	OBI	3
2.1	OBI	3
2.1.1	Images	3
2.1.2	Bias	3
2.1.3	Parameters	4
2.1.4	Events	4
2.2	Compared Parameters	5
2.3	Aspect	6
2.4	Star Slots	9
2.4.1	Slot 3	9
2.4.2	Slot 4	10
2.4.3	Slot 5	11
2.4.4	Slot 6	12
2.4.5	Slot 7	13
2.5	FID Slots	14
2.5.1	Slot 0	14
2.5.2	Slot 1	15
2.5.3	Slot 2	16
A	Summary	17
A.1	Status	17
A.2	Comments	17

1 Front

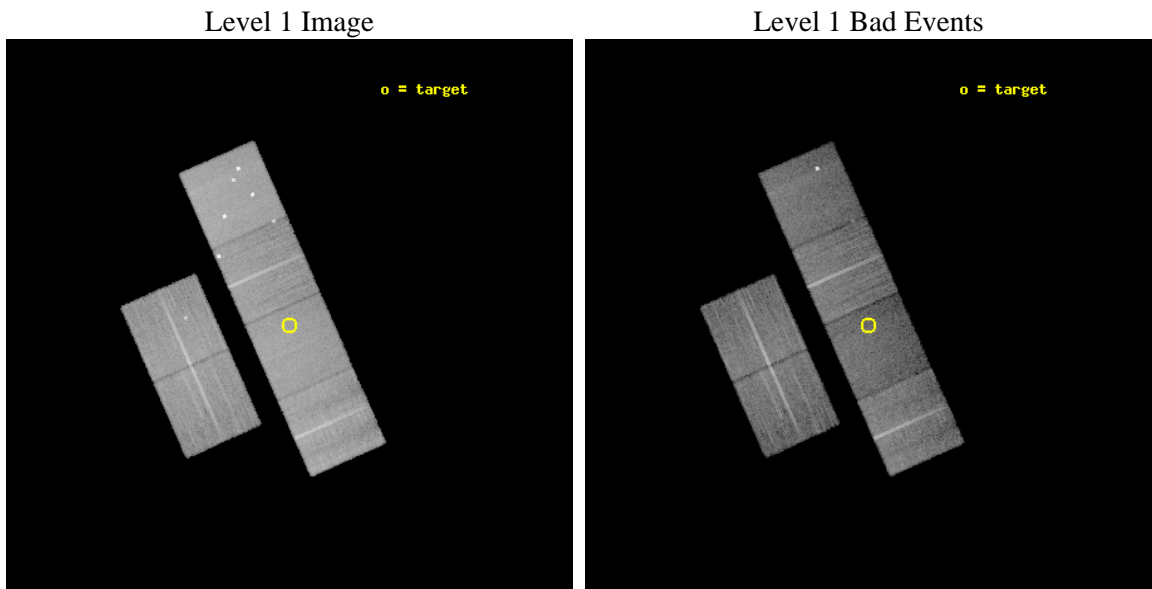
seq_num	701472	Sequence number
obs_id	7808	Observation id
title	The Chandra-RBGS Survey of a Complete Sample of Luminous Infrared Galaxies	Proposal title
observer	Professor David Sanders	Principal investigator
object	IRAS F10173+0828	Source name
dtcycle	0	
cycle	P	events from which exps? Prim/Second/Both
ra_targ	155.000833	Observer's specified target RA [deg]
dec_targ	8.226111	Observer's specified target Dec [deg]
ra_nom	155.00013681621	Nominal RA [deg]
dec_nom	8.2309358619835	Nominal Dec [deg]
roll_nom	66.173699738504	Nominal Roll [deg]
revision	2	Processing version of data
ontime	15177.599943519	Sum of GTIs [s]
livetime	14985.41203418	Livetime [s]
ontime2	15174.358913302	Sum of GTIs [s]
ontime3	15177.599943519	Sum of GTIs [s]
ontime5	15177.599943519	Sum of GTIs [s]
ontime6	15174.358923197	Sum of GTIs [s]
ontime7	15177.599943519	Sum of GTIs [s]
ontime8	15177.599943519	Sum of GTIs [s]
l2events	178578	Number of level 2 events



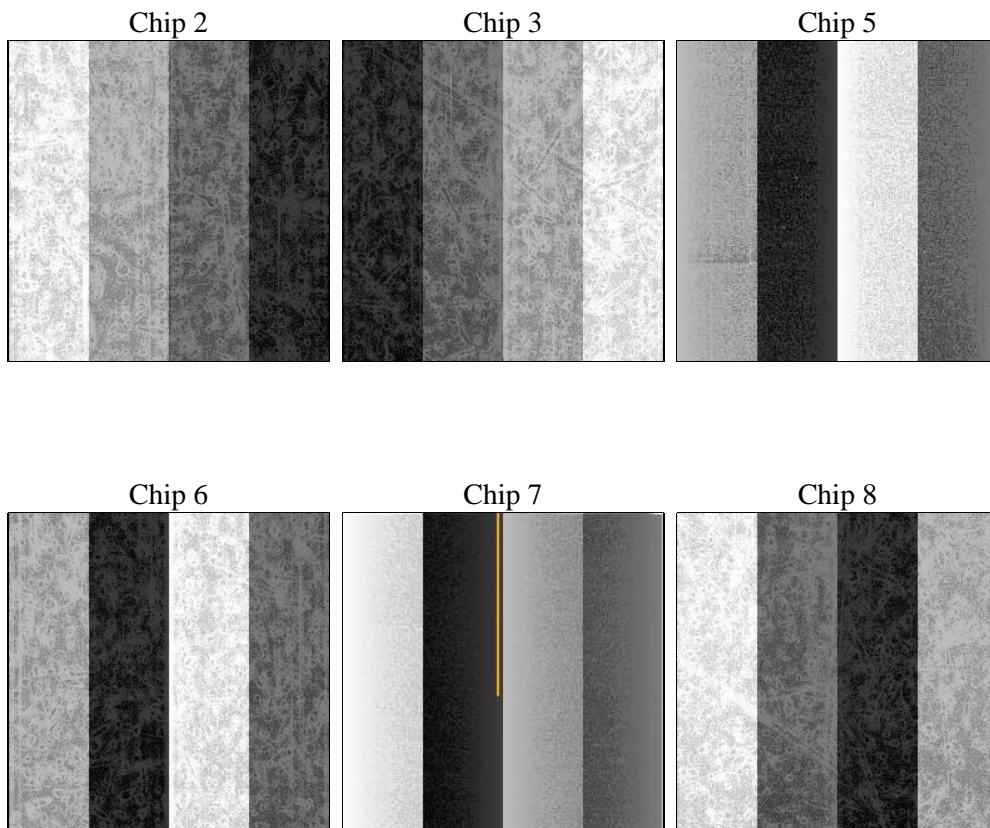
2 OBI

2.1 OBI

2.1.1 Images



2.1.2 Bias



2.1.3 Parameters

obi_num	1	Obi number	sched_exp_time	15000.000000	[s] Scheduled observation exposure time
ascdsver	8.4.4	Processing system revision	ontime	15177.599943519	Sum of GTIs [s]
caldsver	4.4.9	 	ontime2	15174.358913302	Sum of GTIs [s]
date	2012-05-08T03:24:43	Date and time of file creation	ontime3	15177.599943519	Sum of GTIs [s]
revision	2	Processing version of data	ontime5	15177.599943519	Sum of GTIs [s]
			ontime6	15174.358923197	Sum of GTIs [s]
			ontime7	15177.599943519	Sum of GTIs [s]
			ontime8	15177.599943519	Sum of GTIs [s]
			l1events	887903	Number of level 1 events

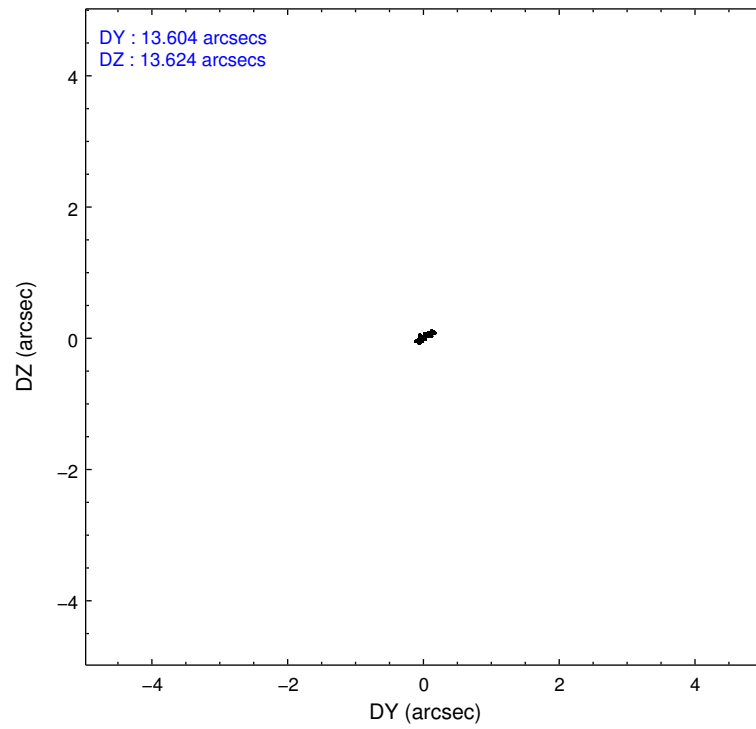
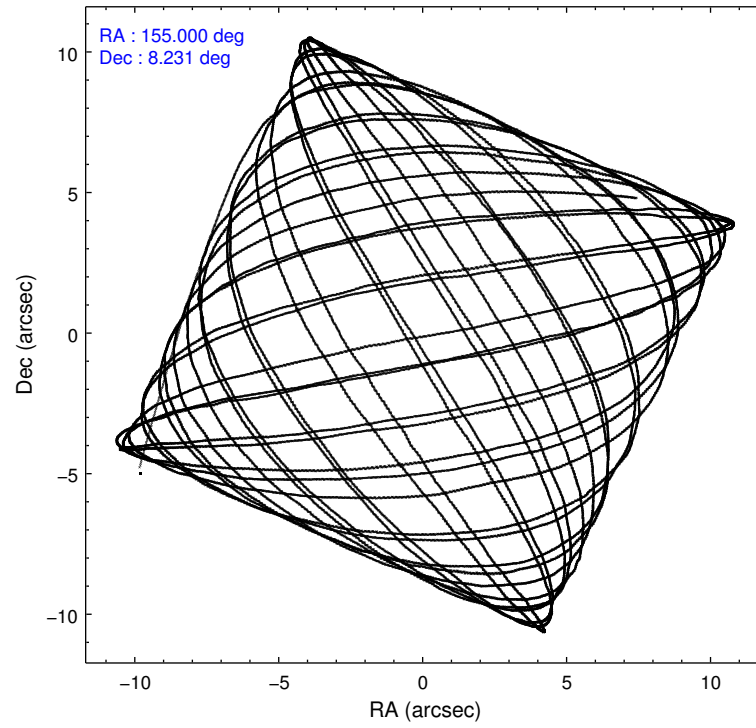
2.1.4 Events

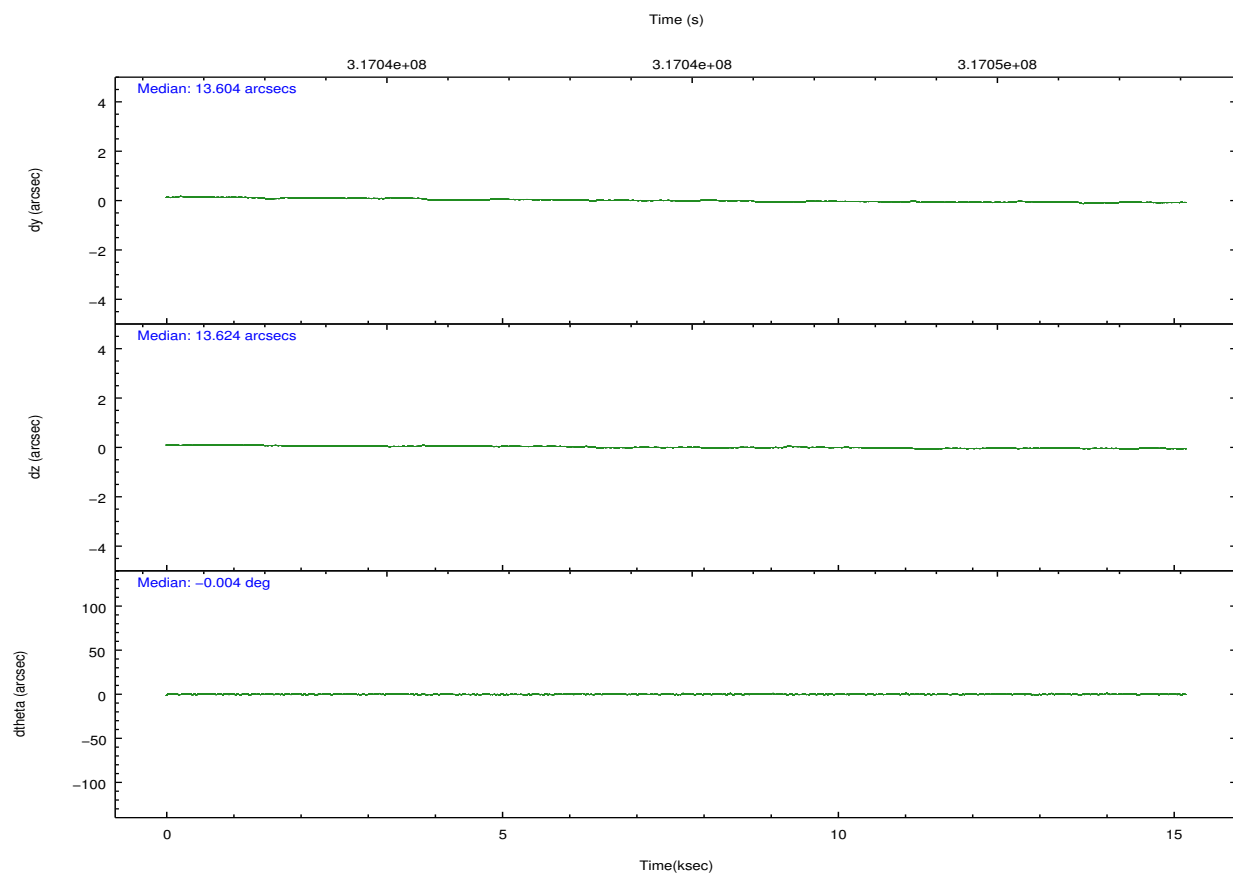
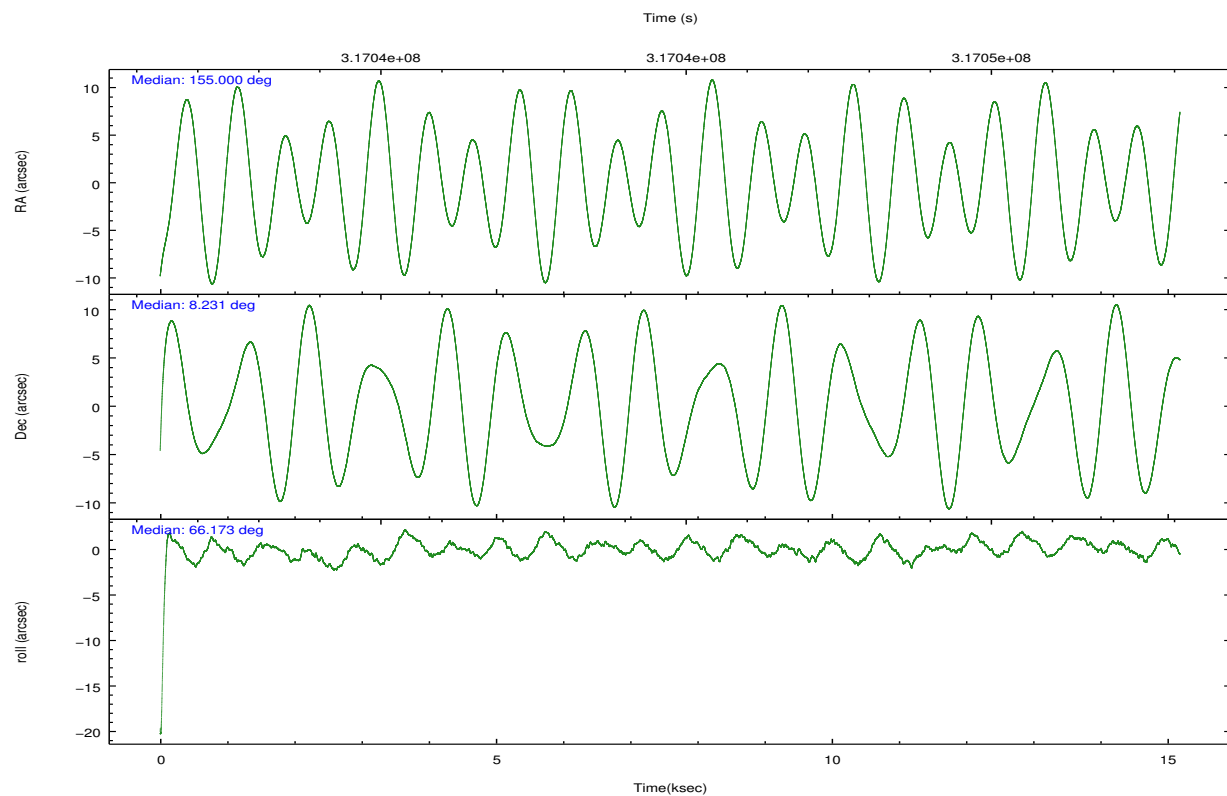
	ccd 2	ccd 3	ccd 5	ccd 6	ccd 7	ccd 8		ccd 2	ccd 3	ccd 5	ccd 6	ccd 7	ccd 8
level 1 events	136772	119250	191256	137049	142921	160655	grade 0 events	5216	3947	17362	9496	5869	11280
rejected events	124120	108513	100233	120087	82135	125932		3%	3%	9%	6%	4%	7%
rejected %	90%	90%	52%	87%	57%	78%	grade 1 events	95	93	569	99	182	142
								0%	0%	0%	0%	0%	0%
							grade 2 events	3046	2463	26901	2865	13147	8505
								2%	2%	14%	2%	9%	5%
							grade 3 events	1387	1325	3193	1469	5761	3955
								1%	1%	1%	1%	4%	2%
							grade 4 events	1437	1335	3116	1376	5651	3659
								1%	1%	1%	1%	3%	2%
							grade 5 events	4331	5127	13049	5148	14897	7534
								3%	4%	6%	3%	10%	4%
							grade 6 events	2401	2416	46671	2924	34567	9757
								1%	2%	24%	2%	24%	6%
							grade 7 events	118859	102544	80395	113672	62847	115823
								86%	85%	42%	82%	43%	72%

2.2 Compared Parameters

Parameter	Planned	Actual	Parameter	Planned	Actual
Instrument	ACIS	ACIS	Obspar format version number	7	7
Detector	ACIS-235678	ACIS-235678	Obspar file type	PREDICTED	ACTUAL
Grating	NONE	NONE	Obspar update status	NONE	UPDATED
Data mode	VFAINT	VFAINT	CCD I0 on	N	N
Observation mode	POINTING	POINTING	CCD I1 on	N	N
[deg] Pointing RA	155.003513	155.0001368162099	CCD I2 on	O1	Y
[deg] Pointing Dec	8.203774	8.230935861983481	CCD I3 on	O2	Y
[deg] Pointing Roll	66.016605	66.17369973850364	CCD S0 on	N	N
[mm] SIM focus pos	-0.684267	-0.6828225247311905	CCD S1 on	O3	Y
[mm] SIM defocus	0	0.001444936568705701	CCD S2 on	O5	Y
[mm] SIM translation stage pos	-190.132523	-190.1425803651734	CCD S3 on	Y	Y
[mm] SIM translation stage offset	0	0.01005778216563158	CCD S4 on	O4	Y
[s] Observation start time (MET)	317037326.184000	317035730.52568	CCD S5 on	N	N
Observation start date	2008-01-18T09:54:21	2008-01-18T09:28:50	Number of optional ACIS chips dropped	0	0
[s] Observation end time (MET)	317052326.184000	317053295.43903	On-chip summing requested	N	N
Observation end date	2008-01-18T14:04:21	2008-01-18T14:21:35	Subarray requested	NONE	NONE
Read mode	TIMED	TIMED	Alternating exposures requested	N	N
			[s] Primary exposure time	0.000000	3.2

2.3 Aspect



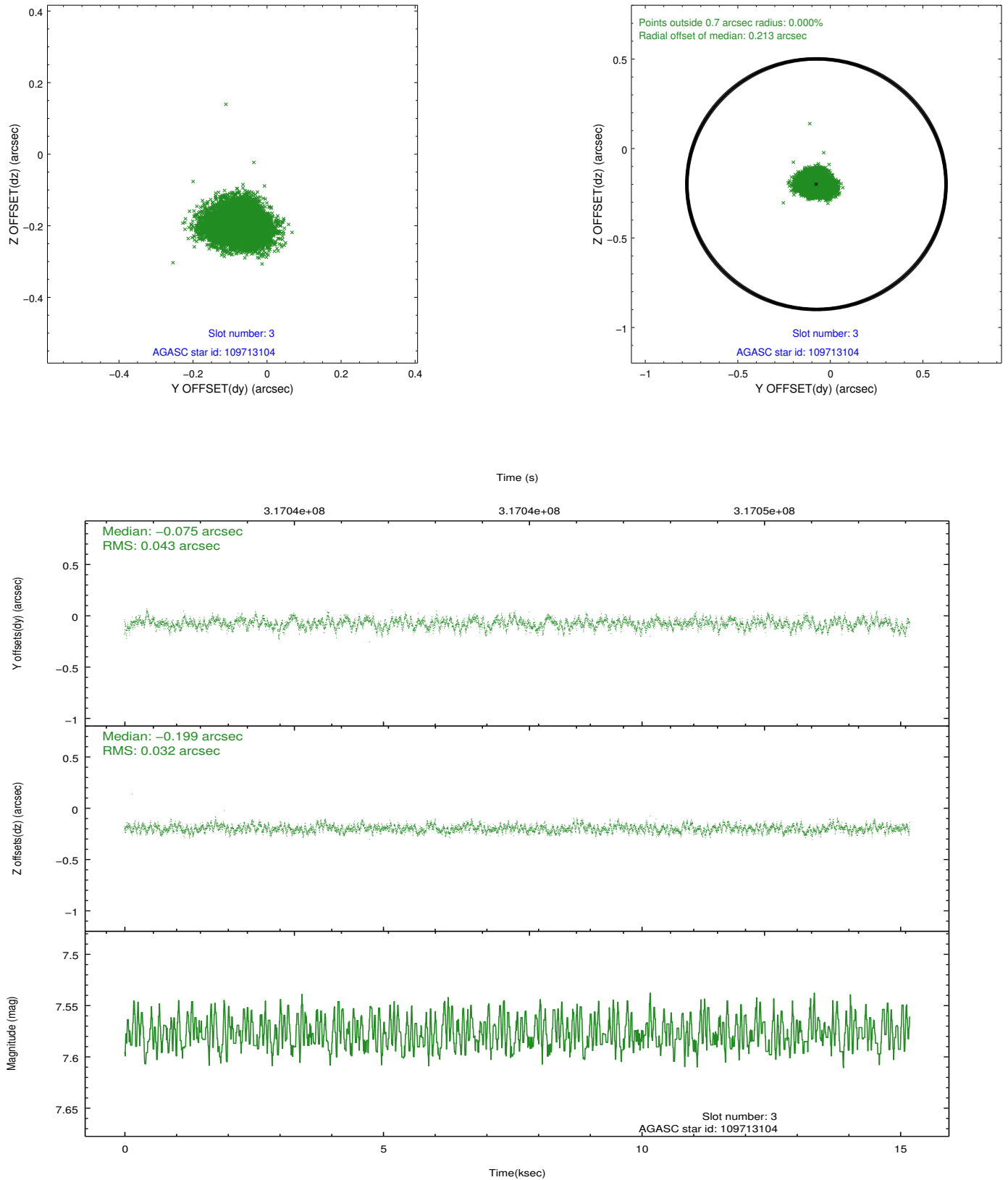


Slot Statistics

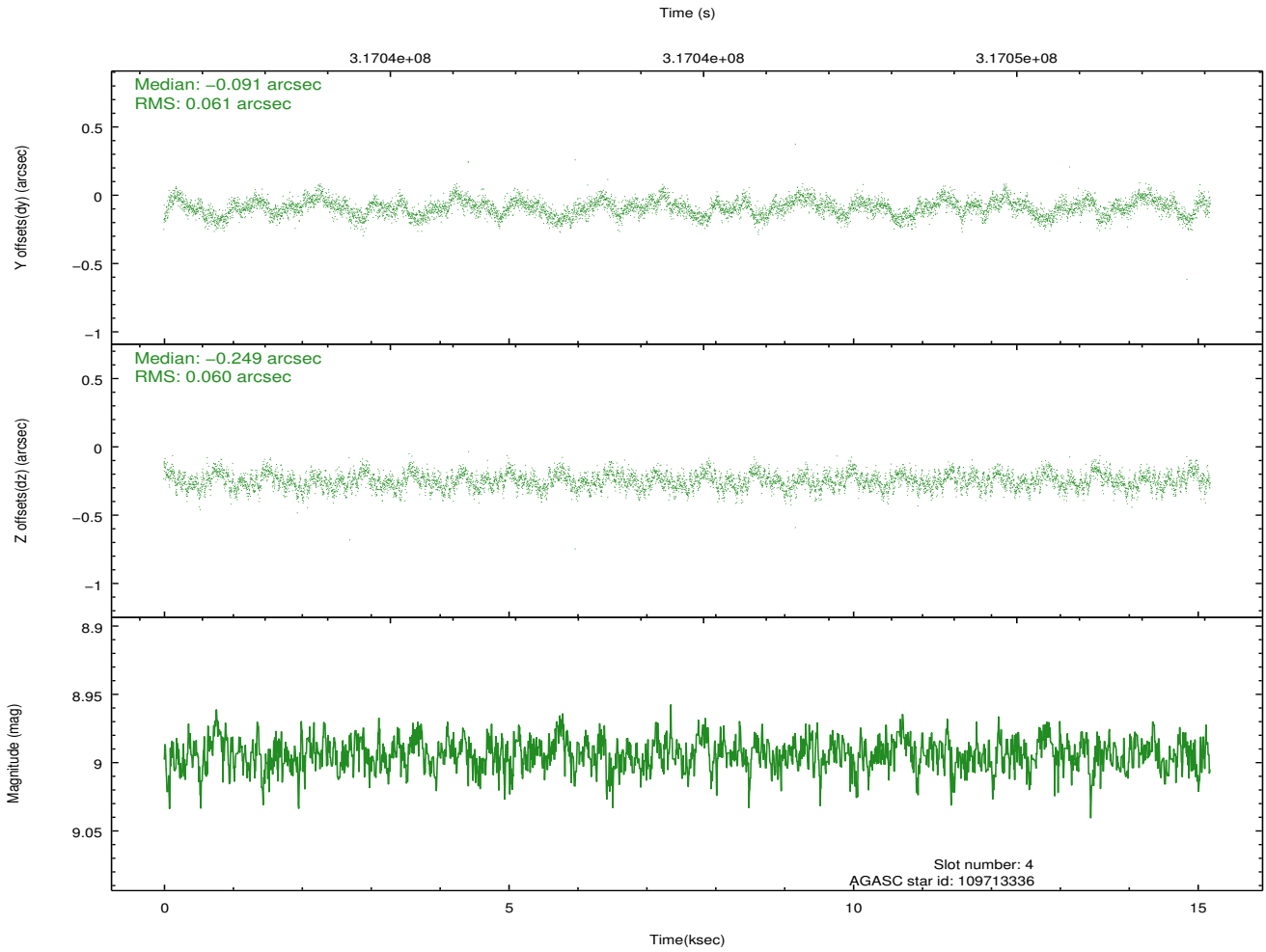
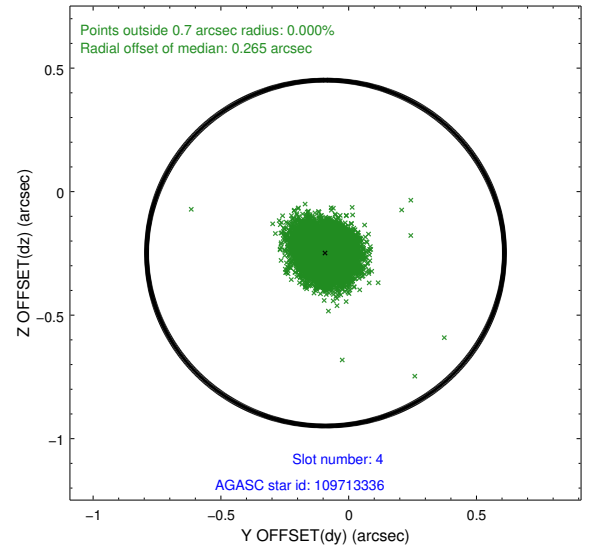
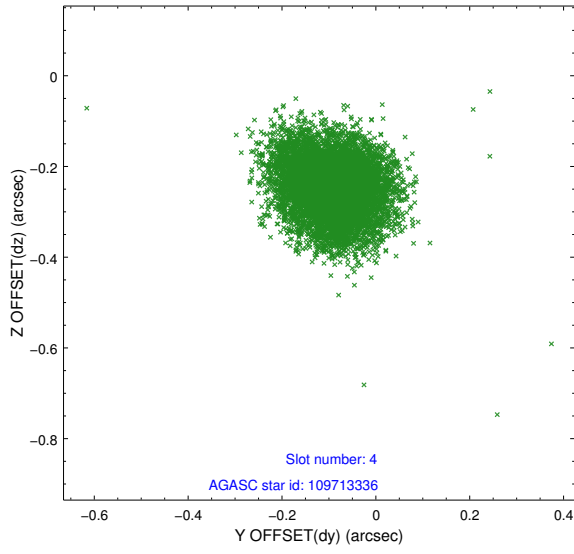
slot	status	id	mag	n_pts	med_dy	med_dz	dr1	dr2	ra	dec	mean_y	mean_z
0	FID	ACIS-S-2	7.10	3704	-0.043	-0.062	0.008	0.012	0.000000	0.000000	-766.59	-1734.99
1	FID	ACIS-S-4	7.19	3703	0.172	0.037	0.009	0.015	0.000000	0.000000	2146.77	173.28
2	FID	ACIS-S-5	7.23	3704	-0.161	0.033	0.007	0.011	0.000000	0.000000	-1819.17	167.29
3	GUIDE	109713104	7.58	7407	-0.075	-0.199	0.057	0.092	155.058685	8.610739	1418.18	416.24
4	GUIDE	109713336	8.99	7406	-0.091	-0.249	0.091	0.144	154.980255	8.243481	97.23	133.66
5	GUIDE	109715912	8.79	7402	0.020	0.159	0.080	0.130	155.512131	8.496393	1699.92	-1225.71
6	GUIDE	109716216	9.40	7401	0.222	0.229	0.095	0.152	154.960072	7.613949	-2002.37	-721.42
7	GUIDE	109711480	8.44	7404	-0.078	0.058	0.063	0.103	154.855930	9.004701	2420.94	1651.69

2.4 Star Slots

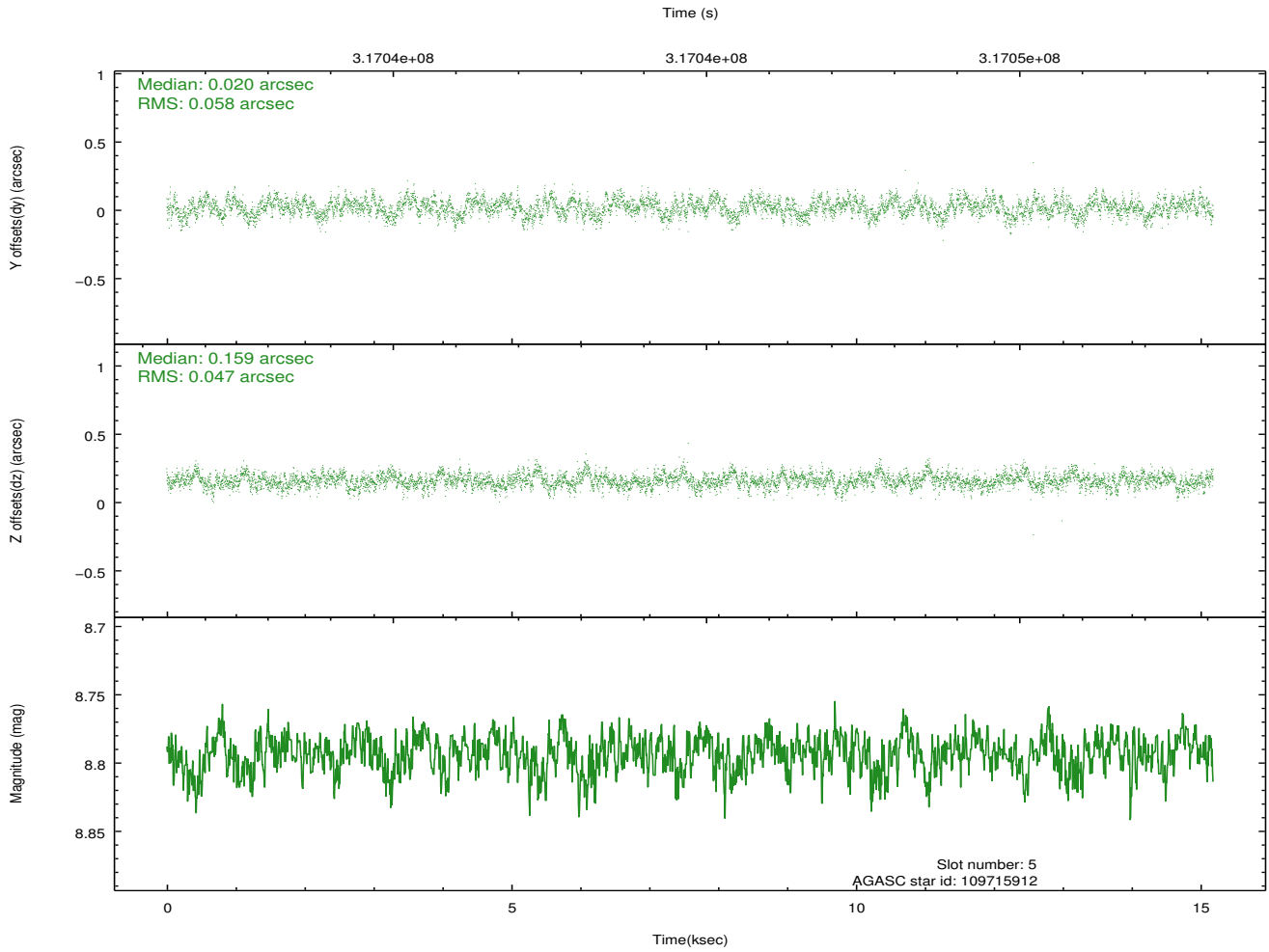
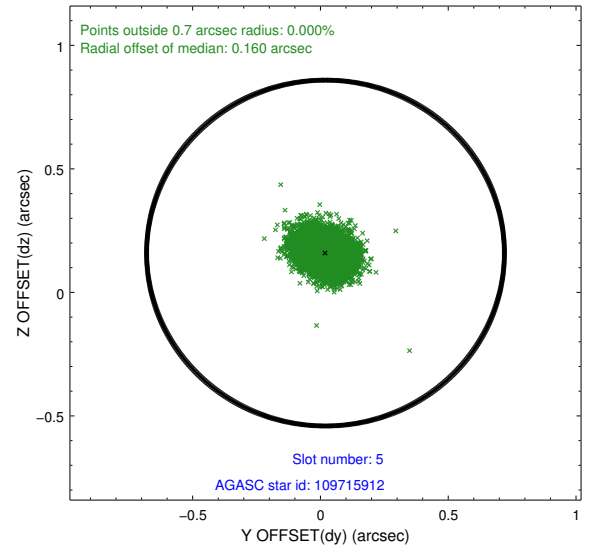
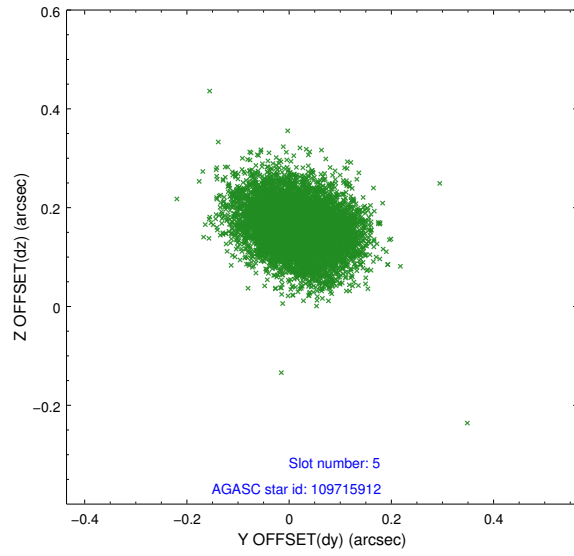
2.4.1 Slot 3



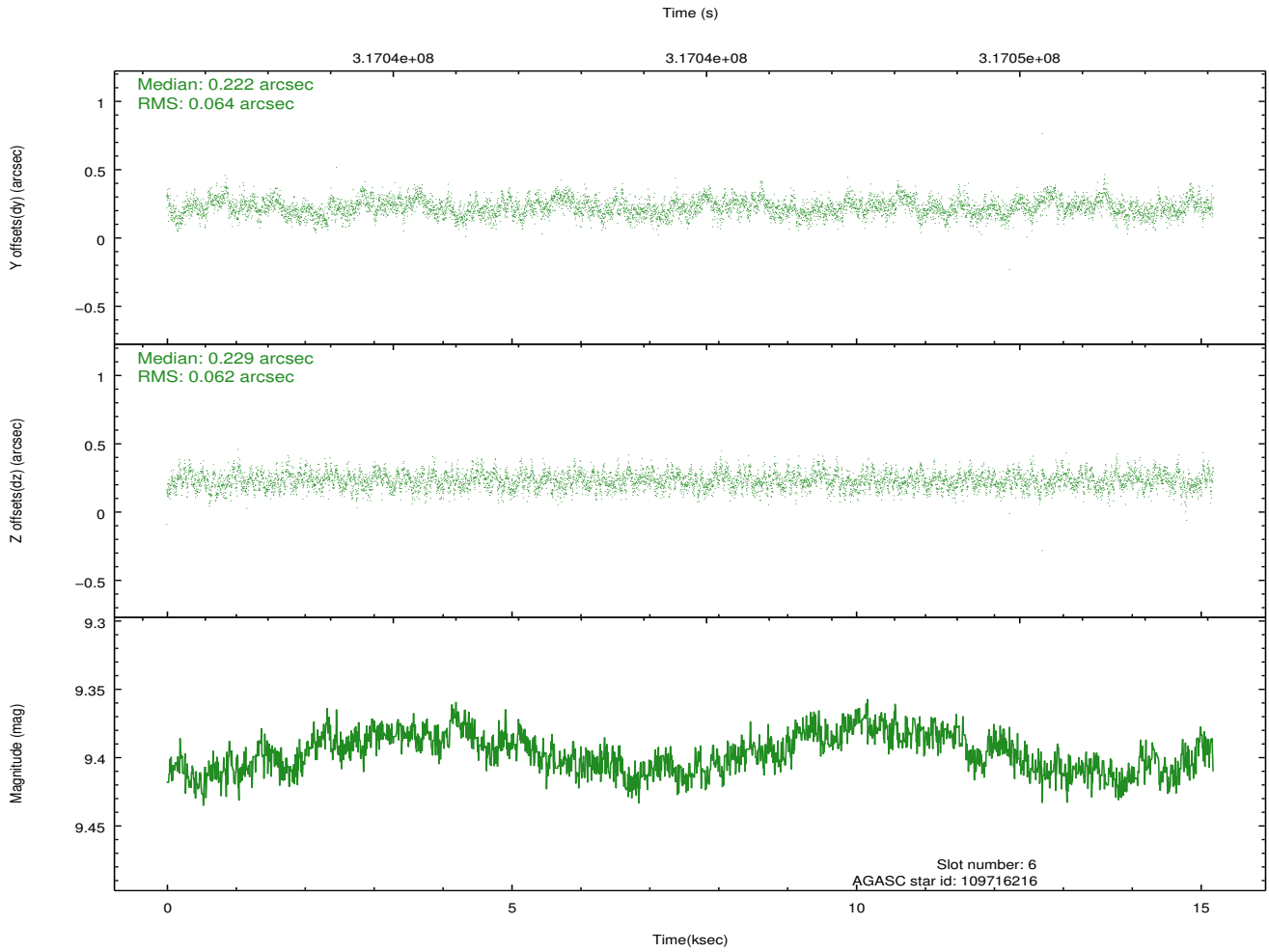
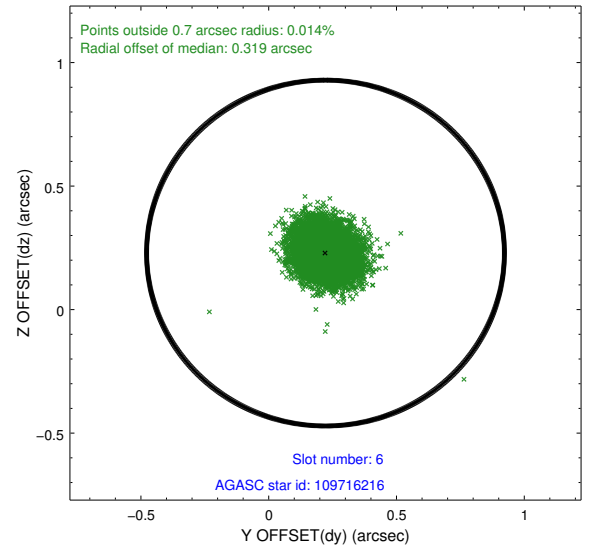
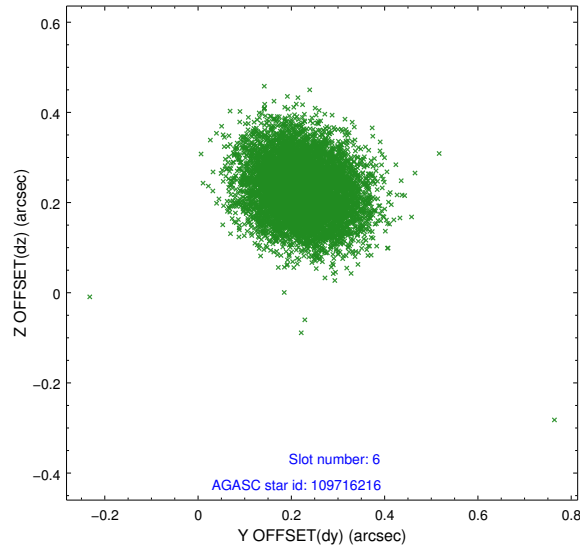
2.4.2 Slot 4



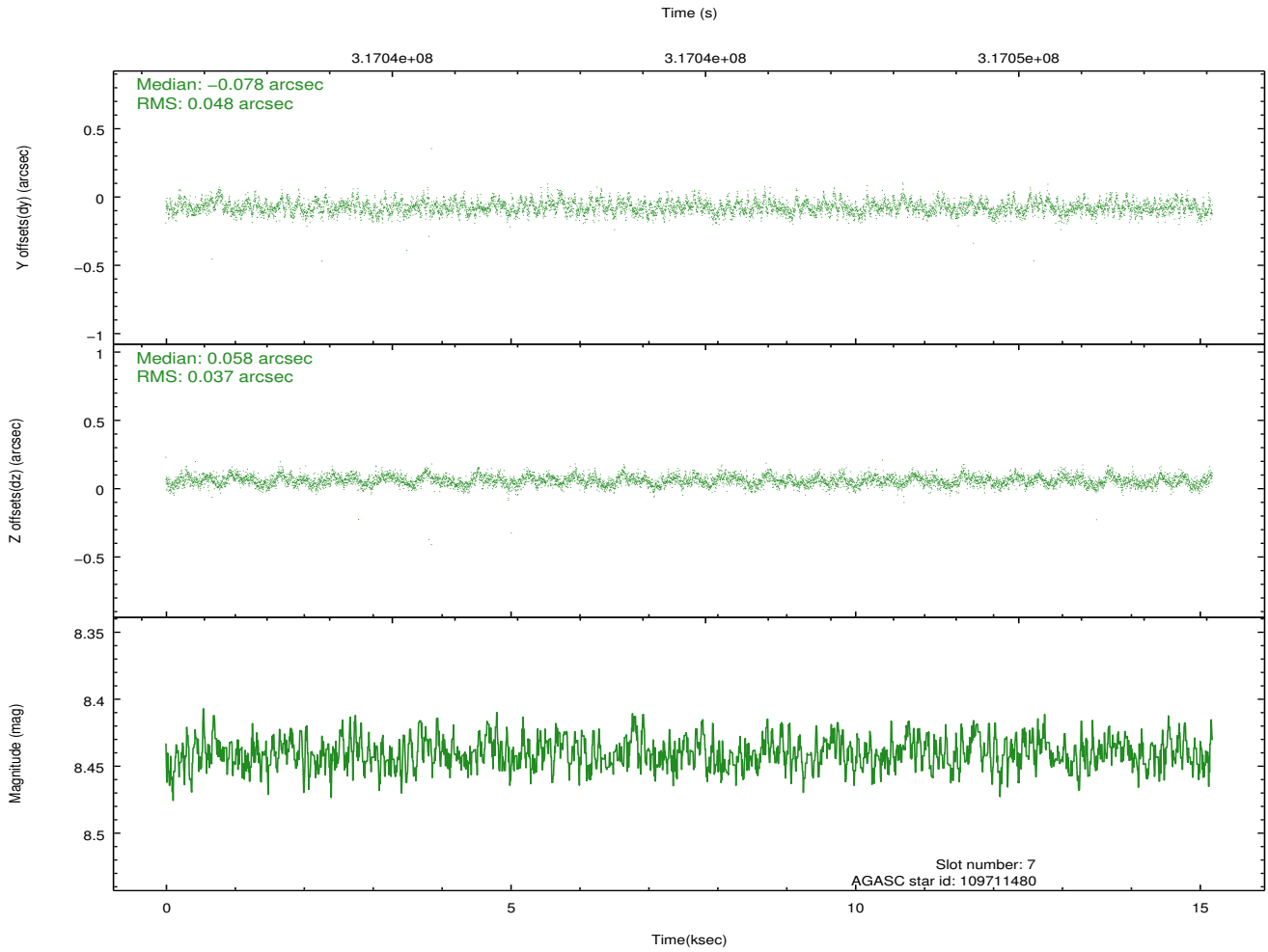
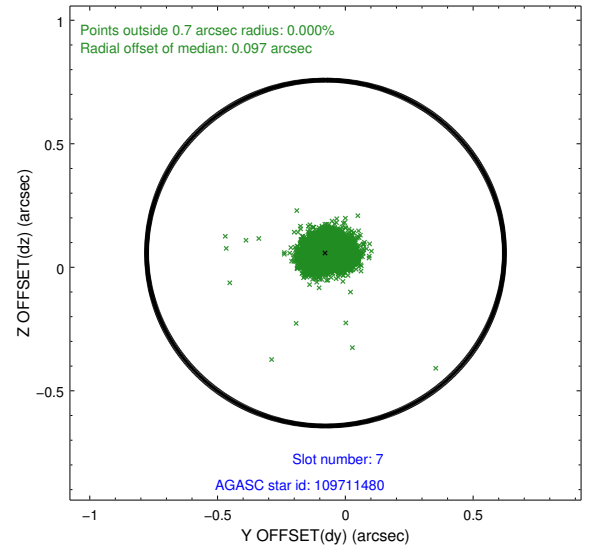
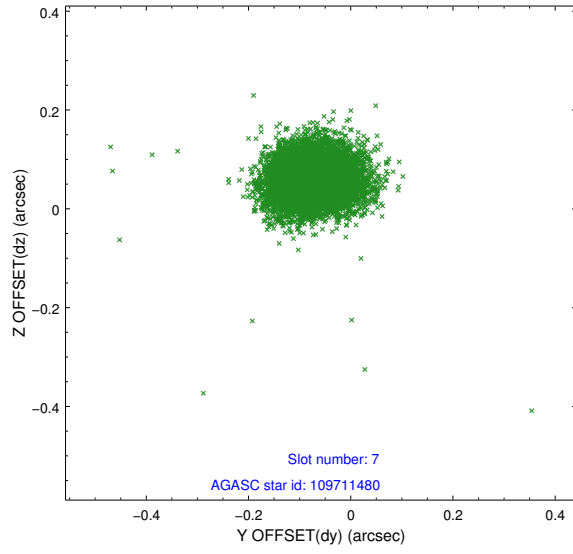
2.4.3 Slot 5



2.4.4 Slot 6

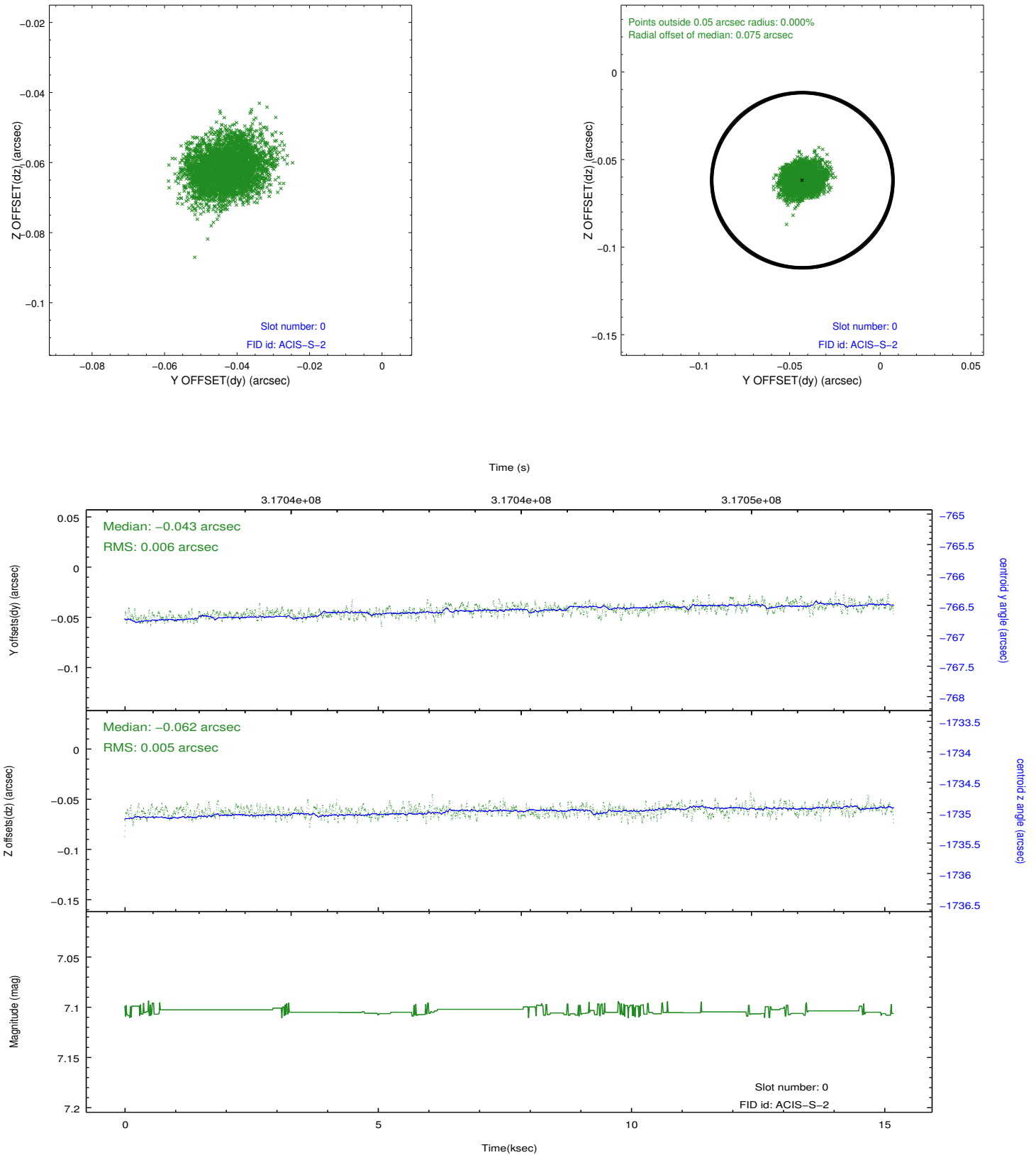


2.4.5 Slot 7

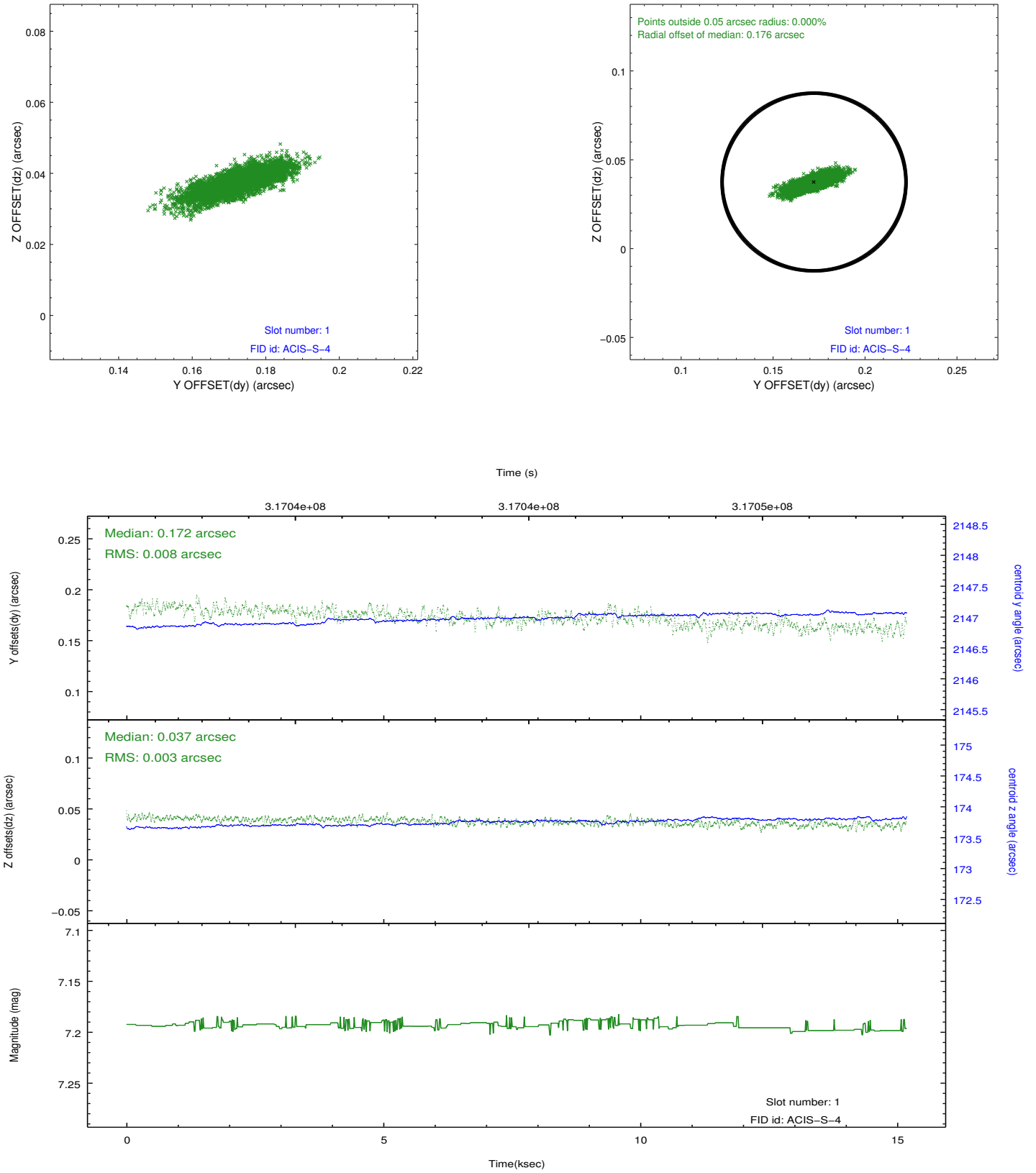


2.5 FID Slots

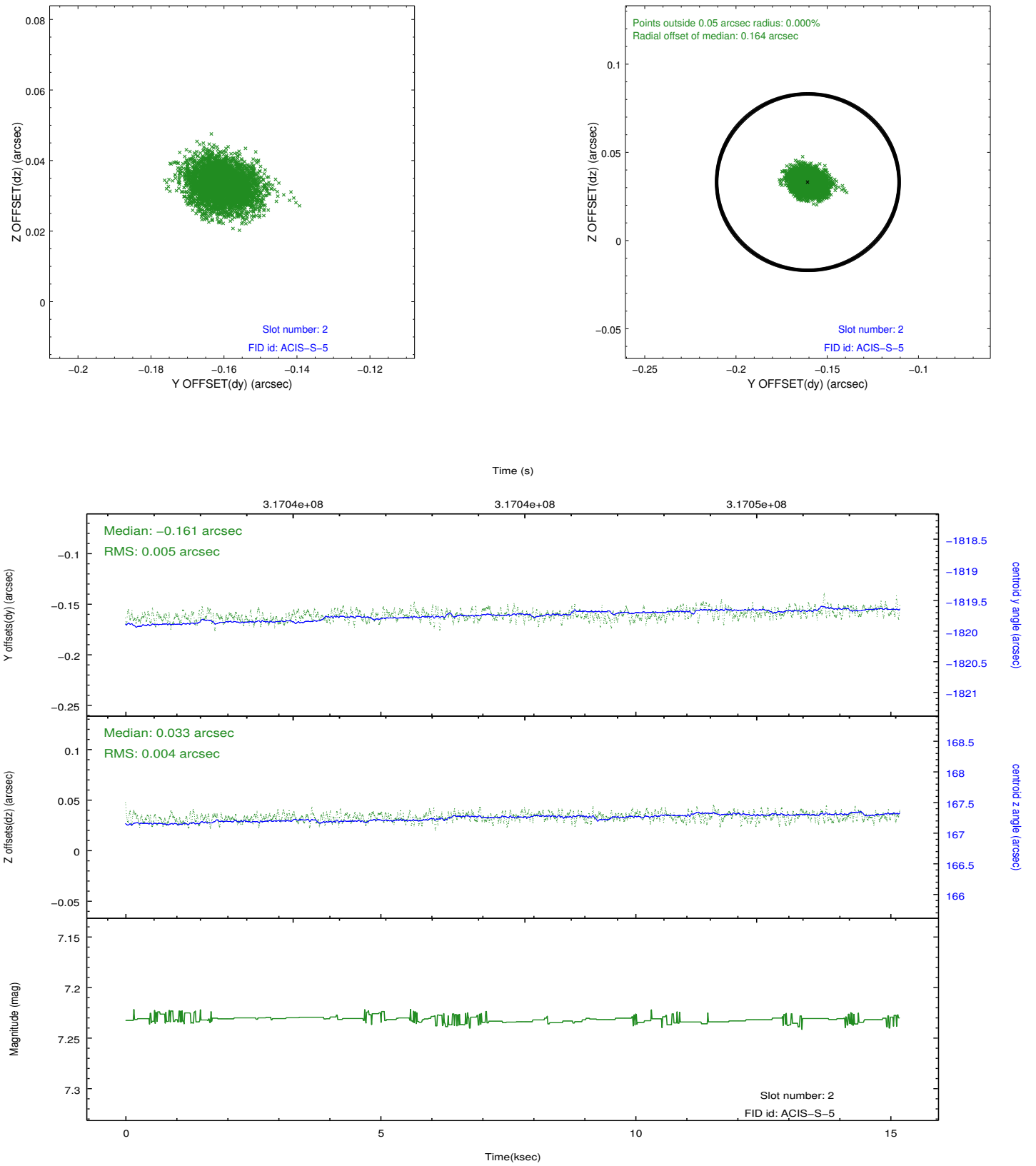
2.5.1 Slot 0



2.5.2 Slot 1



2.5.3 Slot 2



A Summary

A.1 Status

V&V Scientist	Jen Lauer
V&V Date (YYYY-MM-DD)	2012.05.10
V&V Edition	1
V&V Disposition and Status	OK
V&V Charge Time	15.1775999

A.2 Comments