

V&V Reference Report

L2 ASCDS Version : 8.4.4

Observation 7773 - L2 Version 2
Chandra X-Ray Center

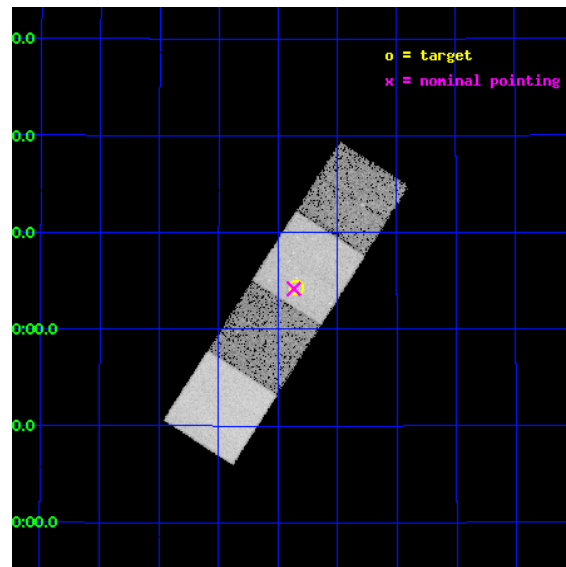
L2 Processing Date : May 1 2012

Contents

1	Front	2
2	OBI	3
2.1	OBI	3
2.1.1	Images	3
2.1.2	Bias	3
2.1.3	Parameters	4
2.1.4	Events	4
2.2	Compared Parameters	5
2.3	Aspect	6
2.4	Star Slots	9
2.4.1	Slot 3	9
2.4.2	Slot 4	10
2.4.3	Slot 5	11
2.4.4	Slot 6	12
2.4.5	Slot 7	13
2.5	FID Slots	14
2.5.1	Slot 0	14
2.5.2	Slot 1	15
2.5.3	Slot 2	16
A	Summary	17
A.1	Status	17
A.2	Comments	17

1 Front

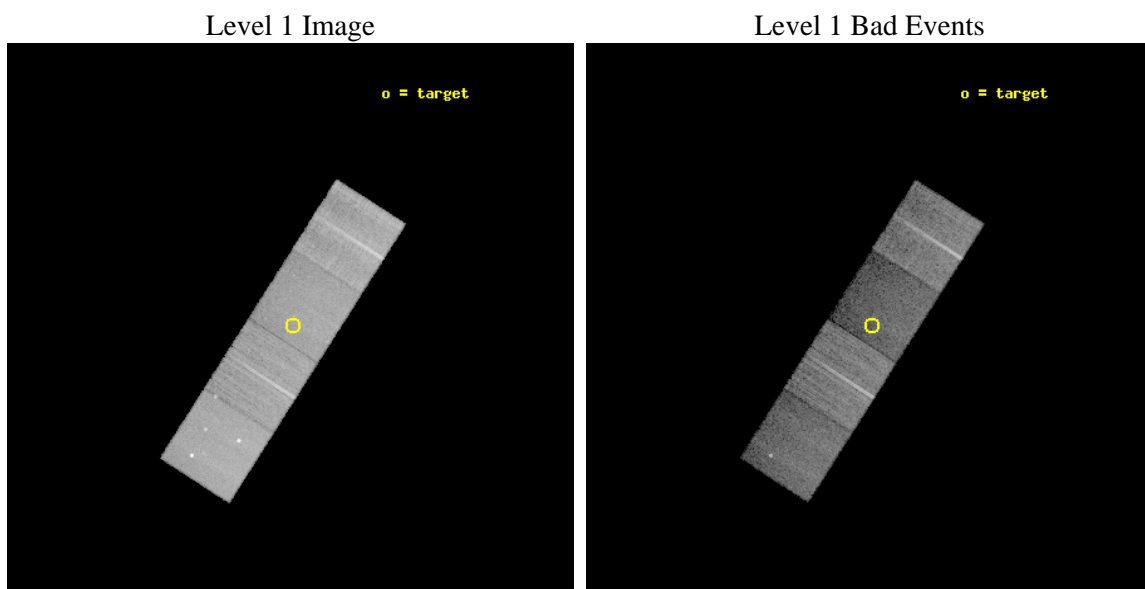
seq_num	701441	Sequence number
obs_id	7773	Observation id
title	Are Compton-thick quasars hidden among the population of heavily obscured Spitzer-selected AGN?	Proposal title
observer	Dr Cristian Vignali	Principal investigator
object	SST24 J143520.75+340418.2	Source name
dtcycle	0	
cycle	P	events from which exps? Prim/Second/Both
ra_targ	218.83625	Observer's specified target RA [deg]
dec_targ	34.071722	Observer's specified target Dec [deg]
ra_nom	218.84154319875	Nominal RA [deg]
dec_nom	34.069641724546	Nominal Dec [deg]
roll_nom	302.60859128343	Nominal Roll [deg]
revision	2	Processing version of data
ontime	15168.300116658	Sum of GTIs [s]
livetime	14970.115108894	Livetime [s]
ontime5	15168.300116658	Sum of GTIs [s]
ontime6	15168.300116658	Sum of GTIs [s]
ontime7	15168.300116658	Sum of GTIs [s]
ontime8	15168.300116658	Sum of GTIs [s]
l2events	143746	Number of level 2 events



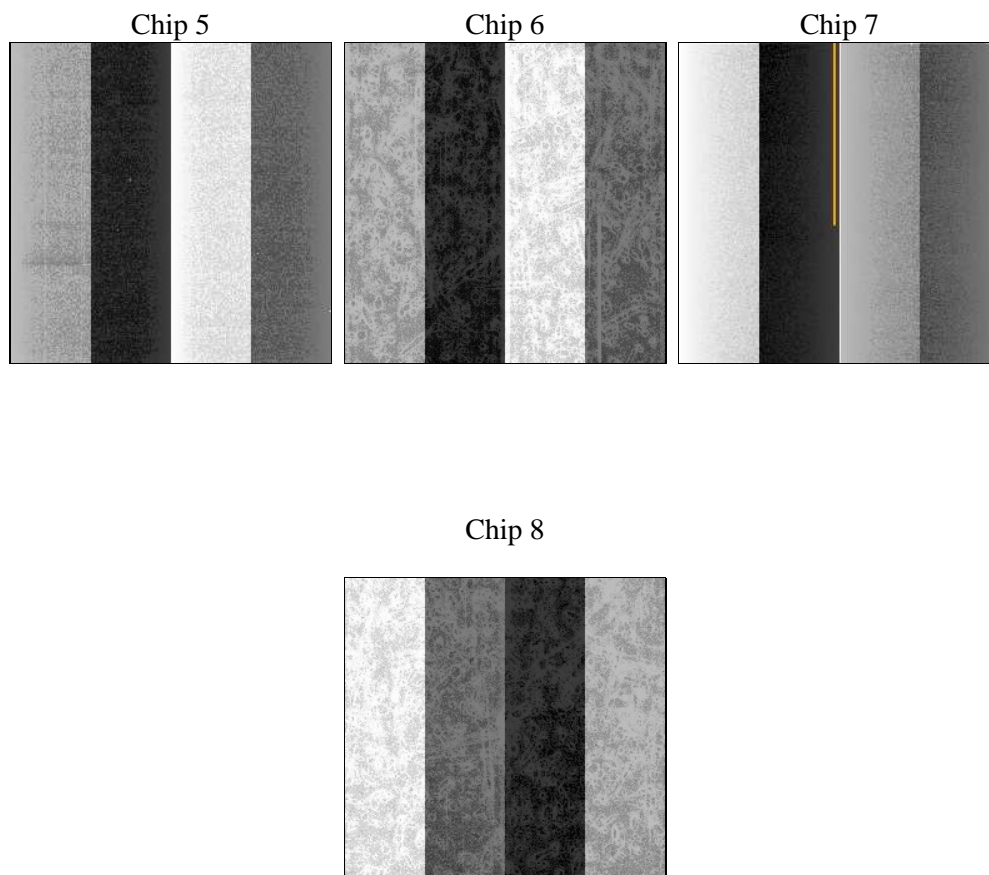
2 OBI

2.1 OBI

2.1.1 Images



2.1.2 Bias



2.1.3 Parameters

obi_num	0	Obi number	sched_exp_time	15000.000000	[s] Scheduled observation exposure time
ascdsver	8.4.4	Processing system revision	ontime	15168.300116658	Sum of GTIs [s]
caldsver	4.4.9	 	ontime5	15168.300116658	Sum of GTIs [s]
date	2012-05-01T19:59:17	Date and time of file creation	ontime6	15168.300116658	Sum of GTIs [s]
revision	2	Processing version of data	ontime7	15168.300116658	Sum of GTIs [s]
			ontime8	15168.300116658	Sum of GTIs [s]
			l1events	544462	Number of level 1 events

2.1.4 Events

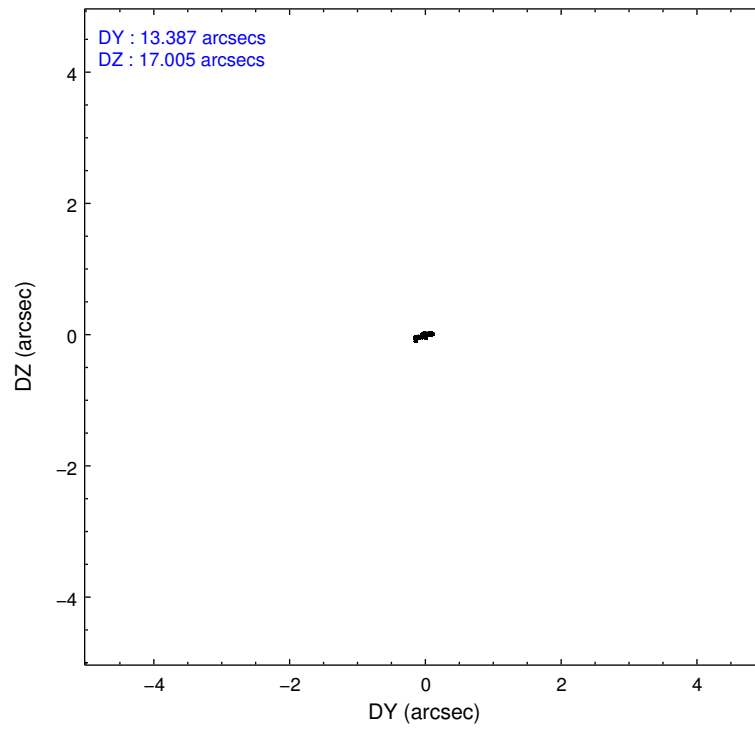
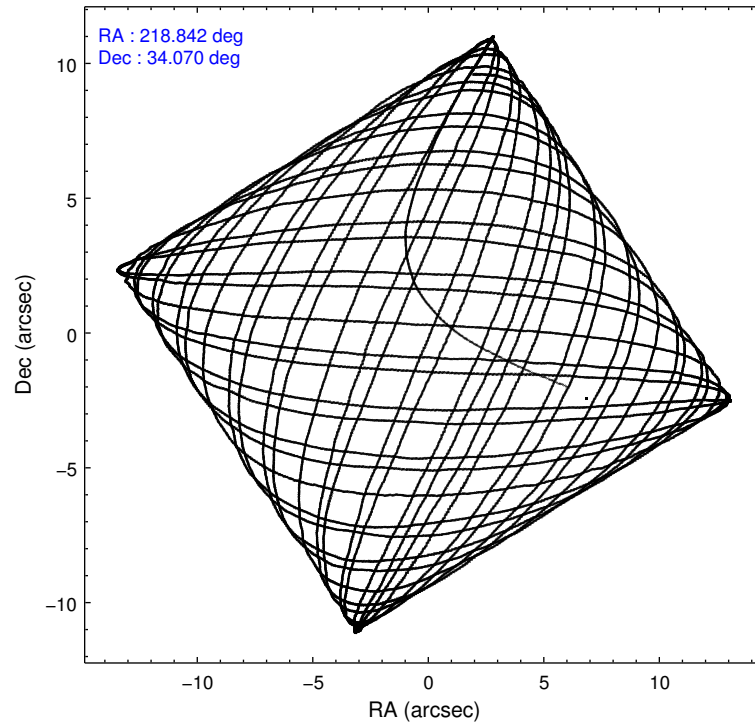
	ccd 5	ccd 6	ccd 7	ccd 8
level 1 events	154481	124200	115099	150682
rejected events	75726	112653	61196	115174
rejected %	49%	90%	53%	76%

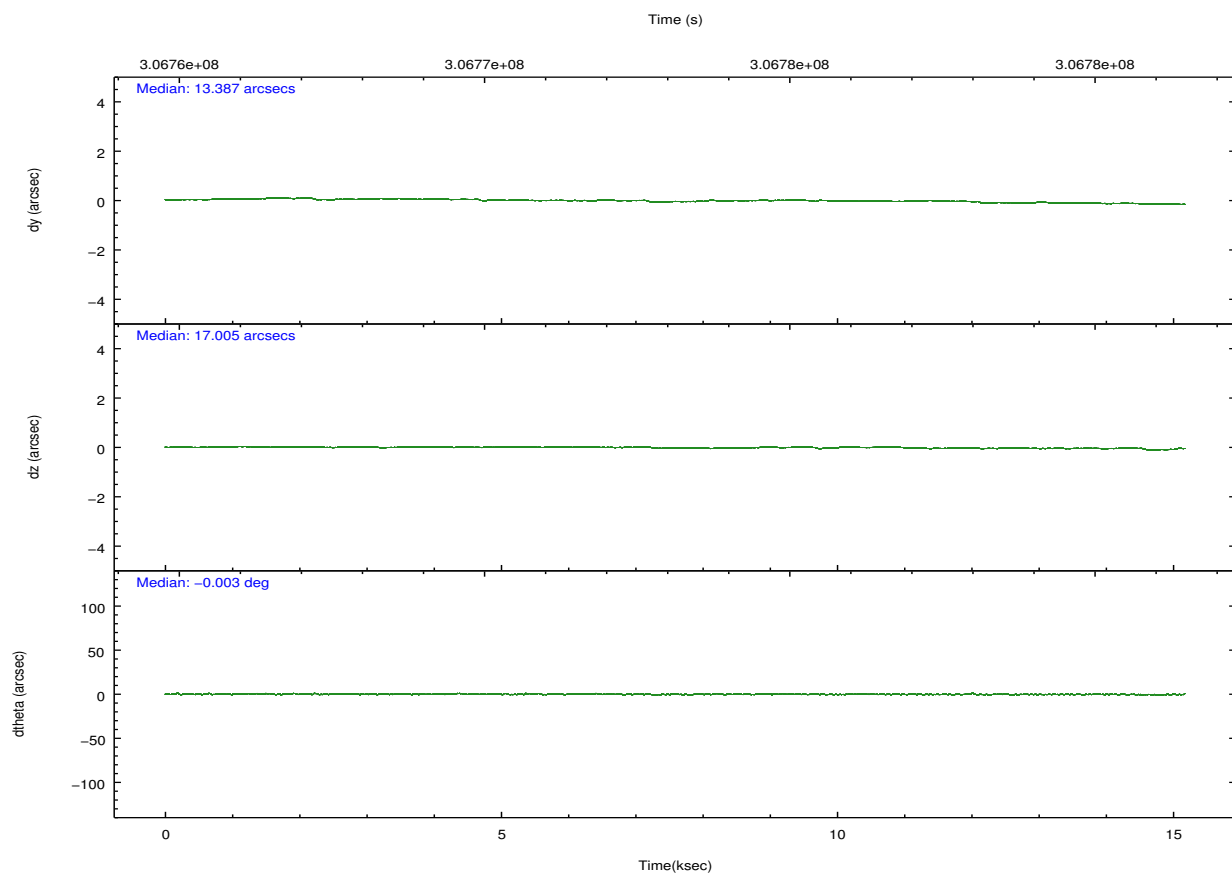
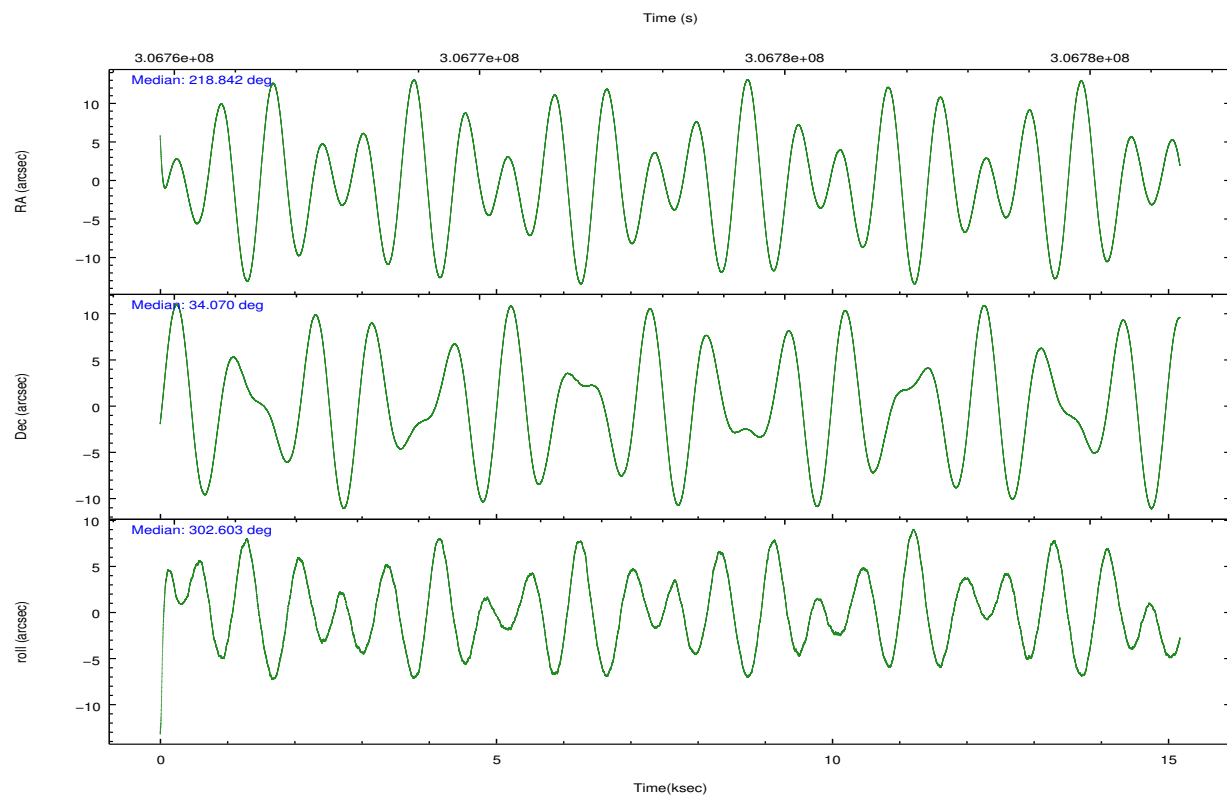
	ccd 5	ccd 6	ccd 7	ccd 8
grade 0 events	11343	4258	6003	10058
	7%	3%	5%	6%
grade 1 events	917	62	175	151
	0%	0%	0%	0%
grade 2 events	24079	2784	11979	8799
	15%	2%	10%	5%
grade 3 events	3634	1339	5300	4145
	2%	1%	4%	2%
grade 4 events	3565	1337	5297	3818
	2%	1%	4%	2%
grade 5 events	12292	4087	12188	6241
	7%	3%	10%	4%
grade 6 events	40157	2394	28170	10385
	25%	1%	24%	6%
grade 7 events	58494	107939	45987	107085
	37%	86%	39%	71%

2.2 Compared Parameters

Parameter	Planned	Actual	Parameter	Planned	Actual
Instrument	ACIS	ACIS	Obspar format version number	7	7
Detector	ACIS-5678	ACIS-5678	Obspar file type	PREDICTED	ACTUAL
Grating	NONE	NONE	Obspar update status	NONE	UPDATED
Data mode	VFAINT	VFAINT	Number of optional ACIS chips dropped	0	0
Observation mode	POINTING	POINTING	On-chip summing requested	N	N
[deg] Pointing RA	218.812005	218.8415431987474	Subarray requested	NONE	NONE
[deg] Pointing Dec	34.081869	34.06964172454596	Alternating exposures requested	N	N
[deg] Pointing Roll	302.468525	302.6085912834342	[s] Primary exposure time	0.000000	3.1
[mm] SIM focus pos	-0.684267	-0.6828225247311905			
[mm] SIM defocus	0	0.001444936568705701			
[mm] SIM translation stage pos	-190.132523	-190.145094680475			
[mm] SIM translation stage offset	0	0.01257209746719923			
[s] Observation start time (MET)	306765706.184000	306764390.04207			
Observation start date	2007-09-21T12:40:41	2007-09-21T12:19:50			
[s] Observation end time (MET)	306780706.184000	306781583.90539			
Observation end date	2007-09-21T16:50:41	2007-09-21T17:06:23			
Read mode	TIMED	TIMED			

2.3 Aspect



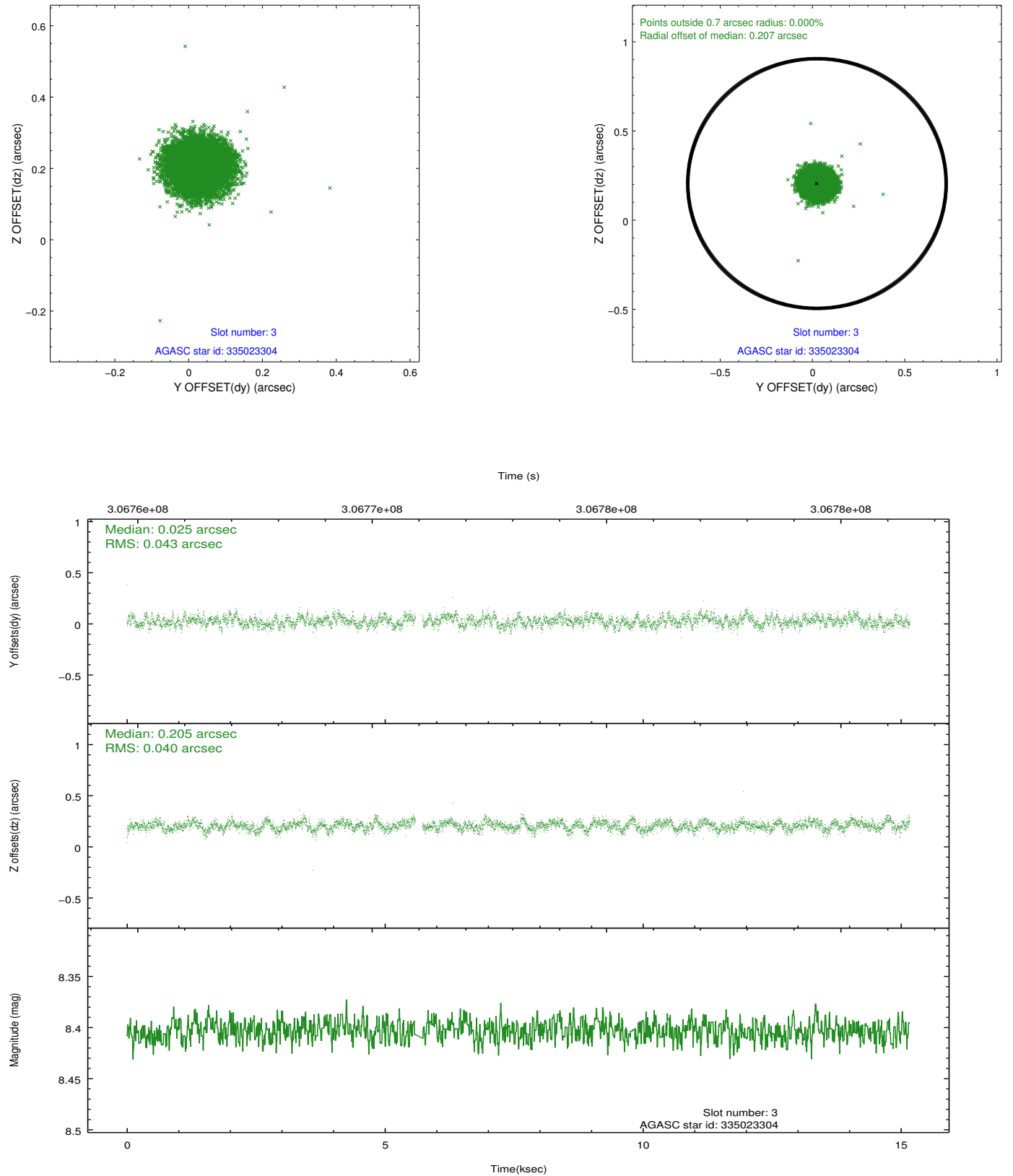


Slot Statistics

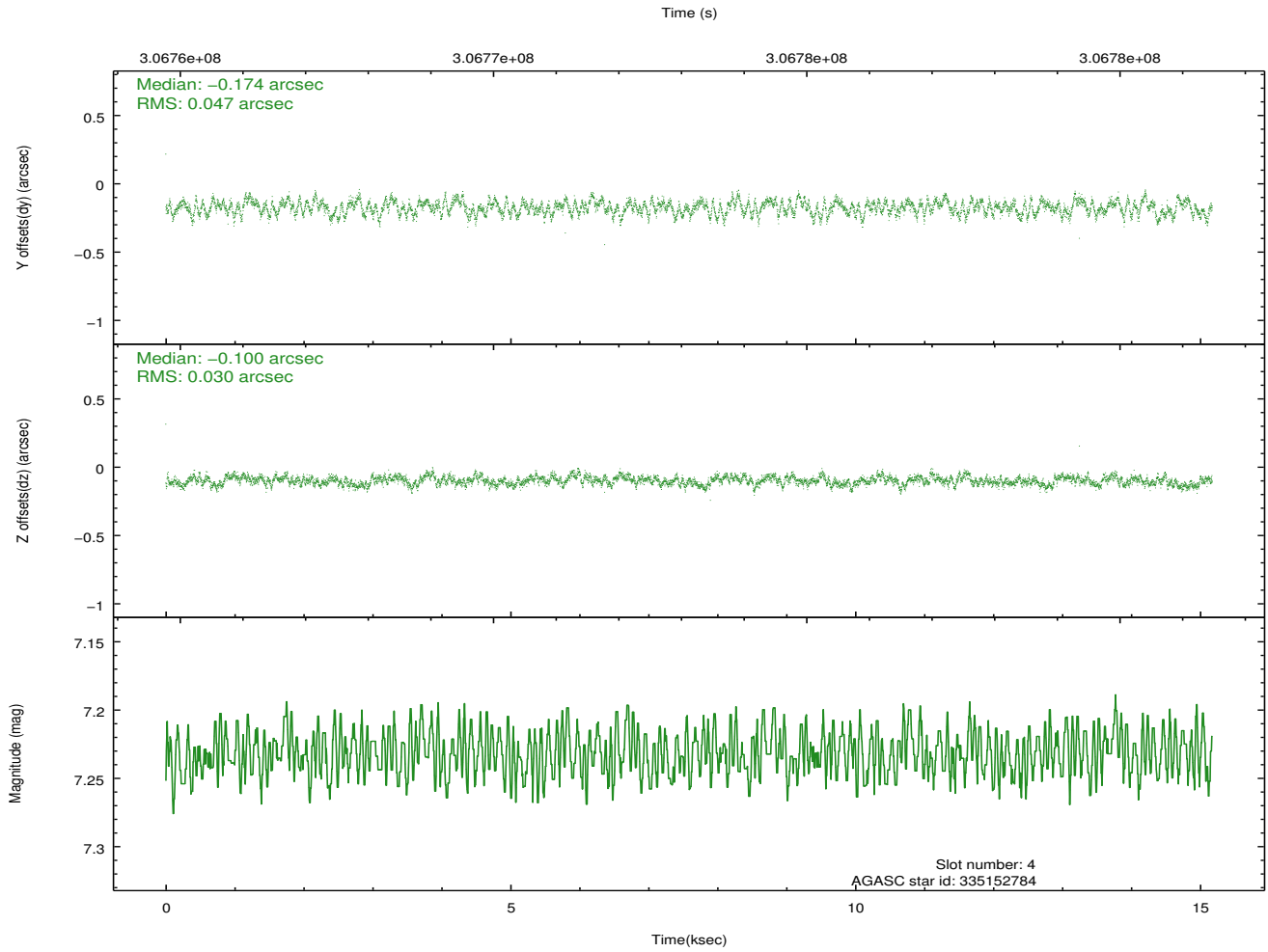
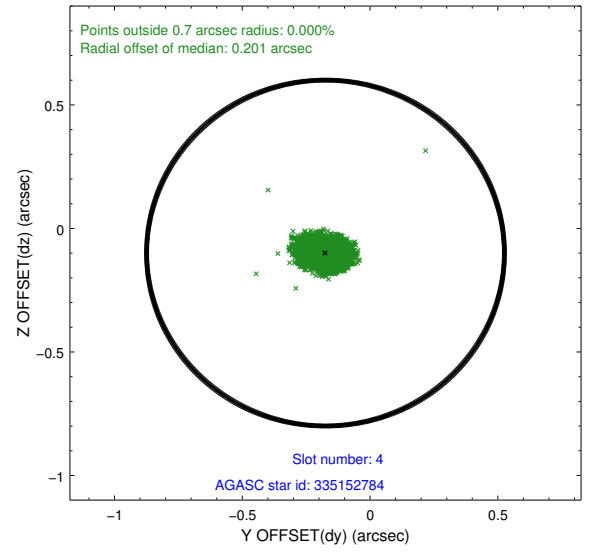
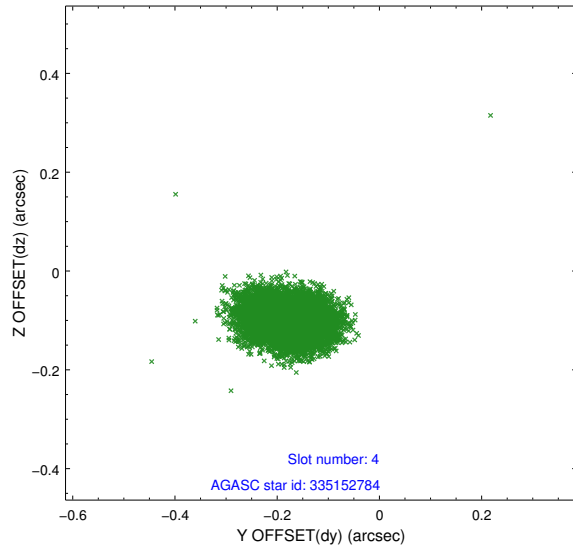
slot	status	id	mag	n_pts	med_dy	med_dz	dr1	dr2	ra	dec	mean_y	mean_z
0	FID	ACIS-S-2	7.09	3701	-0.026	-0.041	0.007	0.011	0.000000	0.000000	-766.35	-1738.36
1	FID	ACIS-S-4	7.18	3699	0.156	0.024	0.006	0.012	0.000000	0.000000	2146.99	169.85
2	FID	ACIS-S-5	7.22	3701	-0.161	0.026	0.007	0.011	0.000000	0.000000	-1818.93	163.91
3	GUIDE	335023304	8.40	7332	0.025	0.205	0.064	0.100	218.883608	34.686545	-1722.66	1347.45
4	GUIDE	335152784	7.23	7403	-0.174	-0.100	0.059	0.096	219.280617	33.678221	1977.00	406.33
5	GUIDE	335155824	8.92	7397	-0.117	0.033	0.083	0.133	219.689900	34.035435	1537.75	2126.14
6	GUIDE	335157088	9.09	7399	0.054	-0.024	0.086	0.140	219.274029	33.726909	1818.75	483.23
7	GUIDE	335028616	9.97	7389	0.219	-0.116	0.179	0.297	218.529874	33.175085	2298.58	-2469.27

2.4 Star Slots

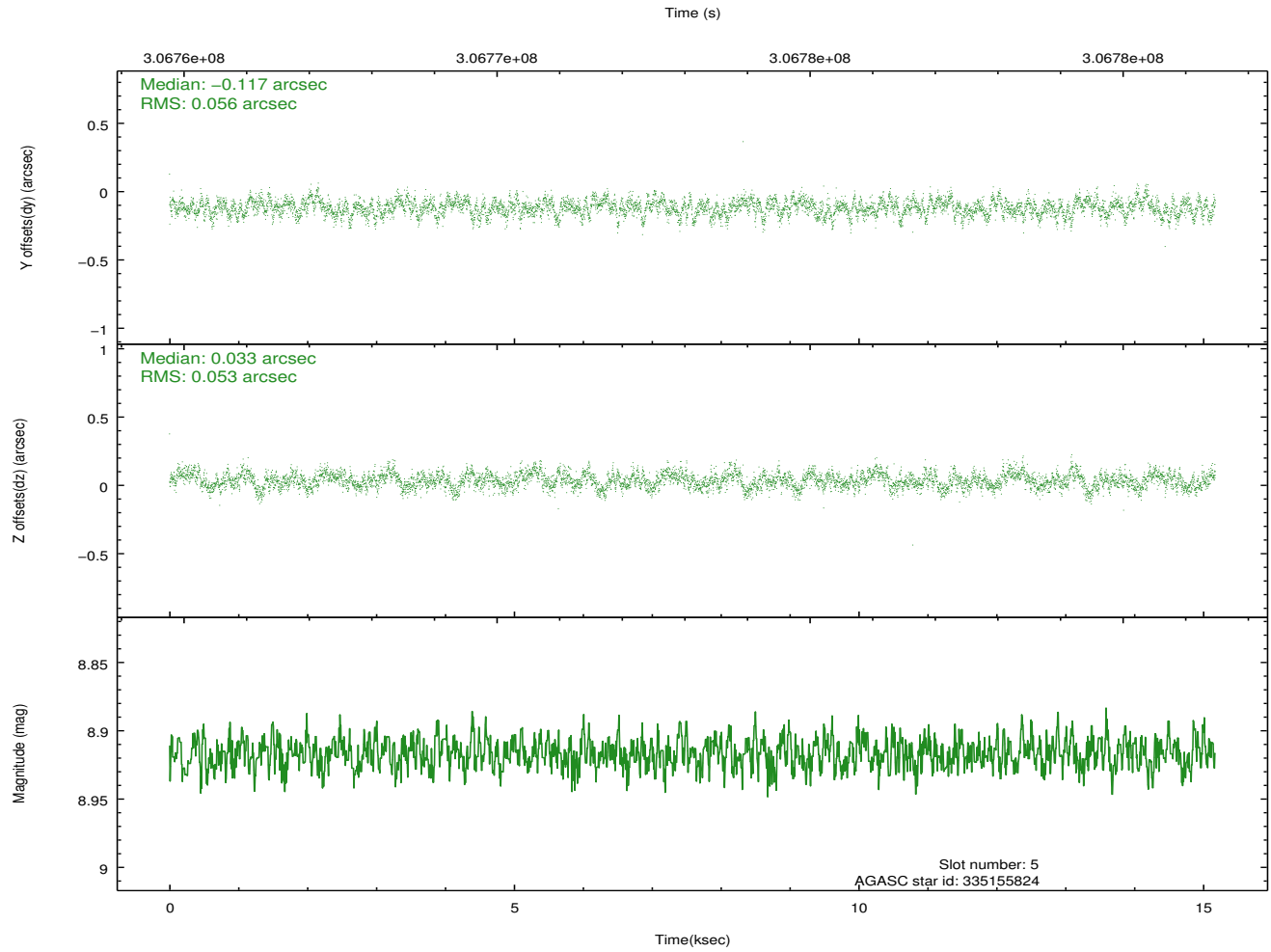
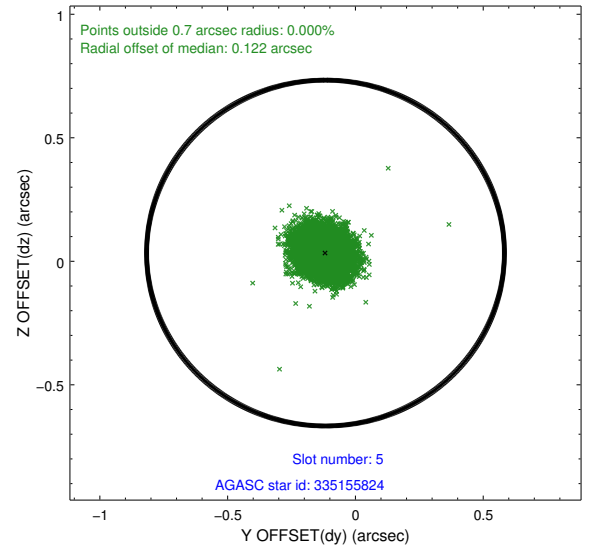
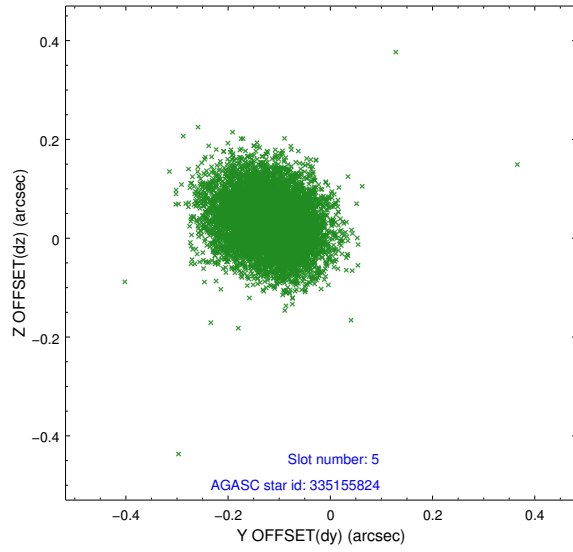
2.4.1 Slot 3



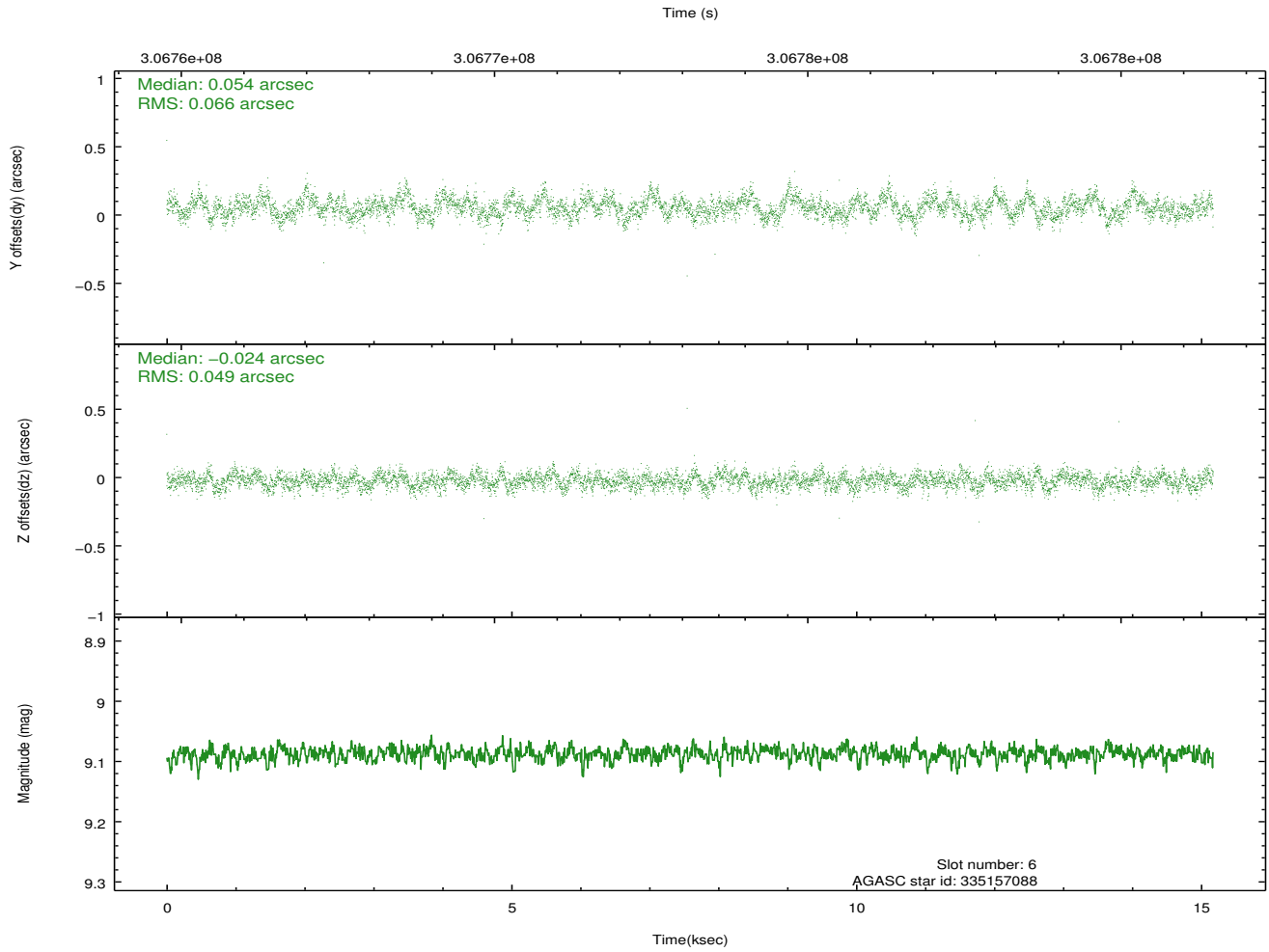
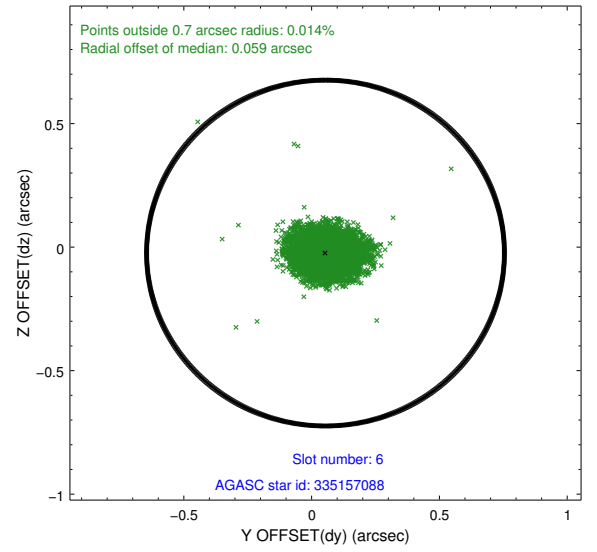
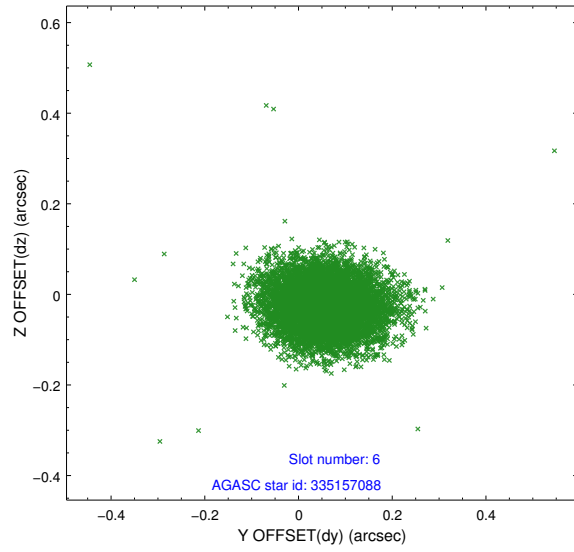
2.4.2 Slot 4



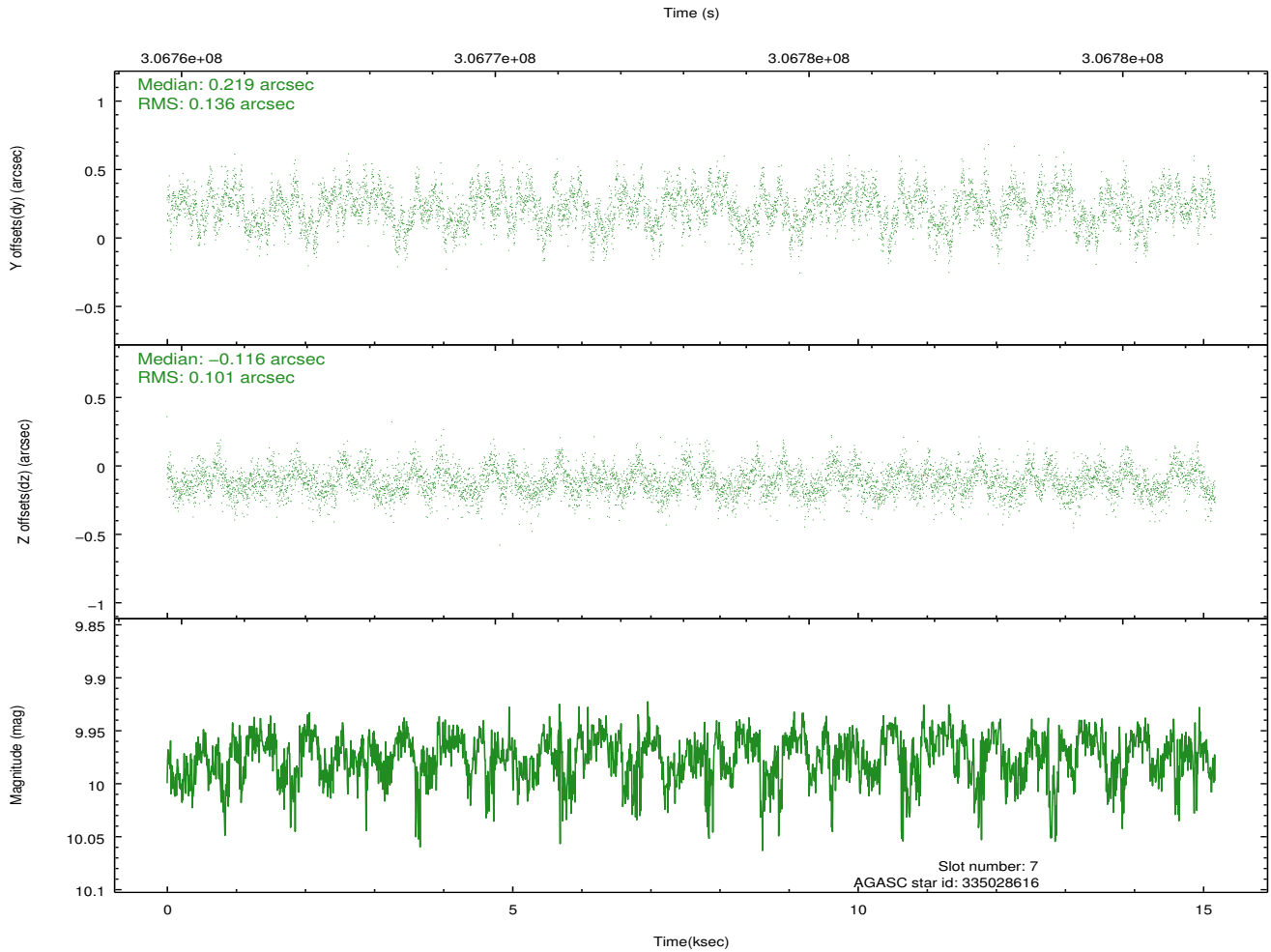
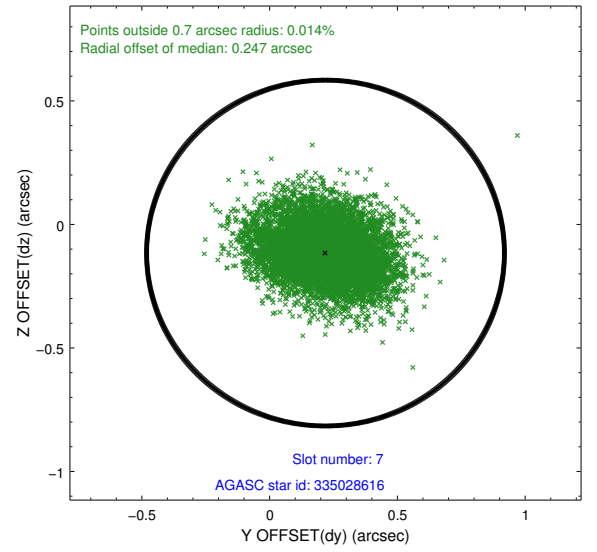
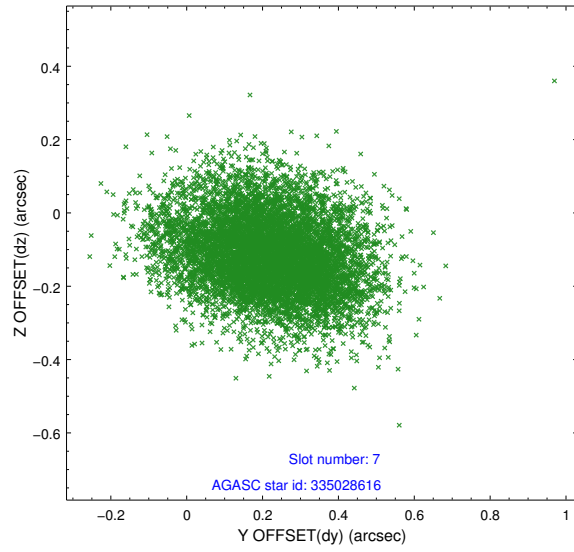
2.4.3 Slot 5



2.4.4 Slot 6

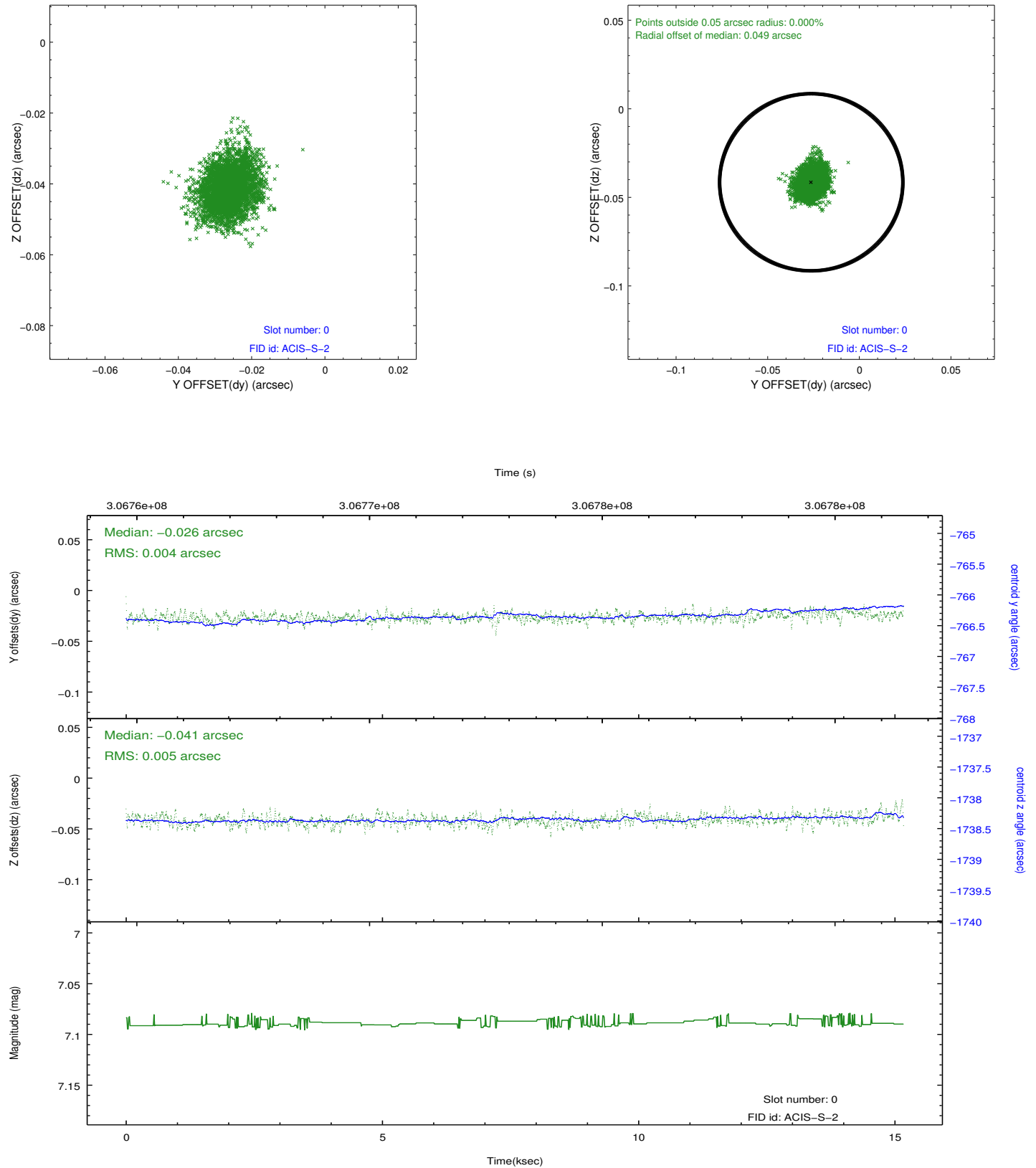


2.4.5 Slot 7

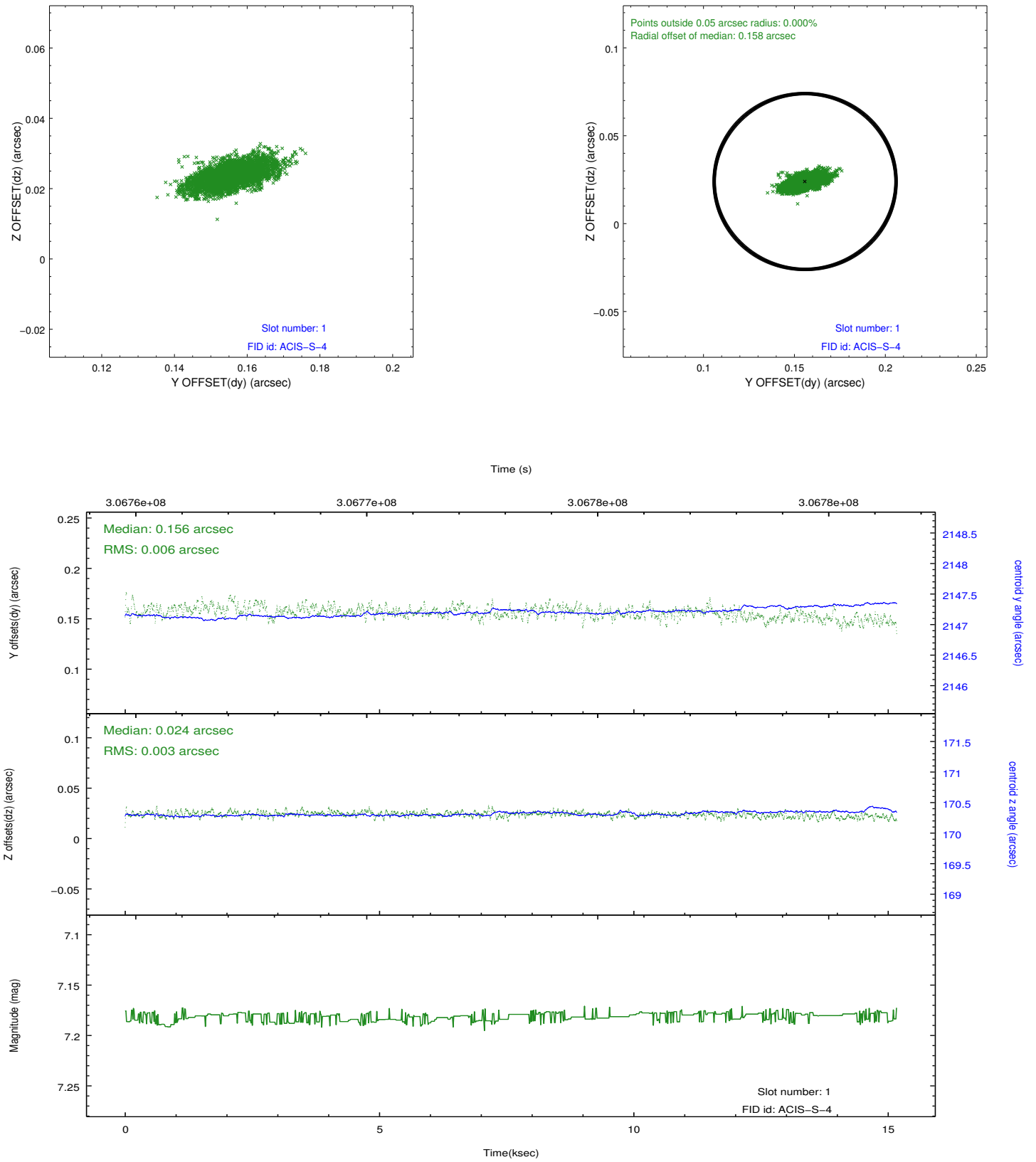


2.5 FID Slots

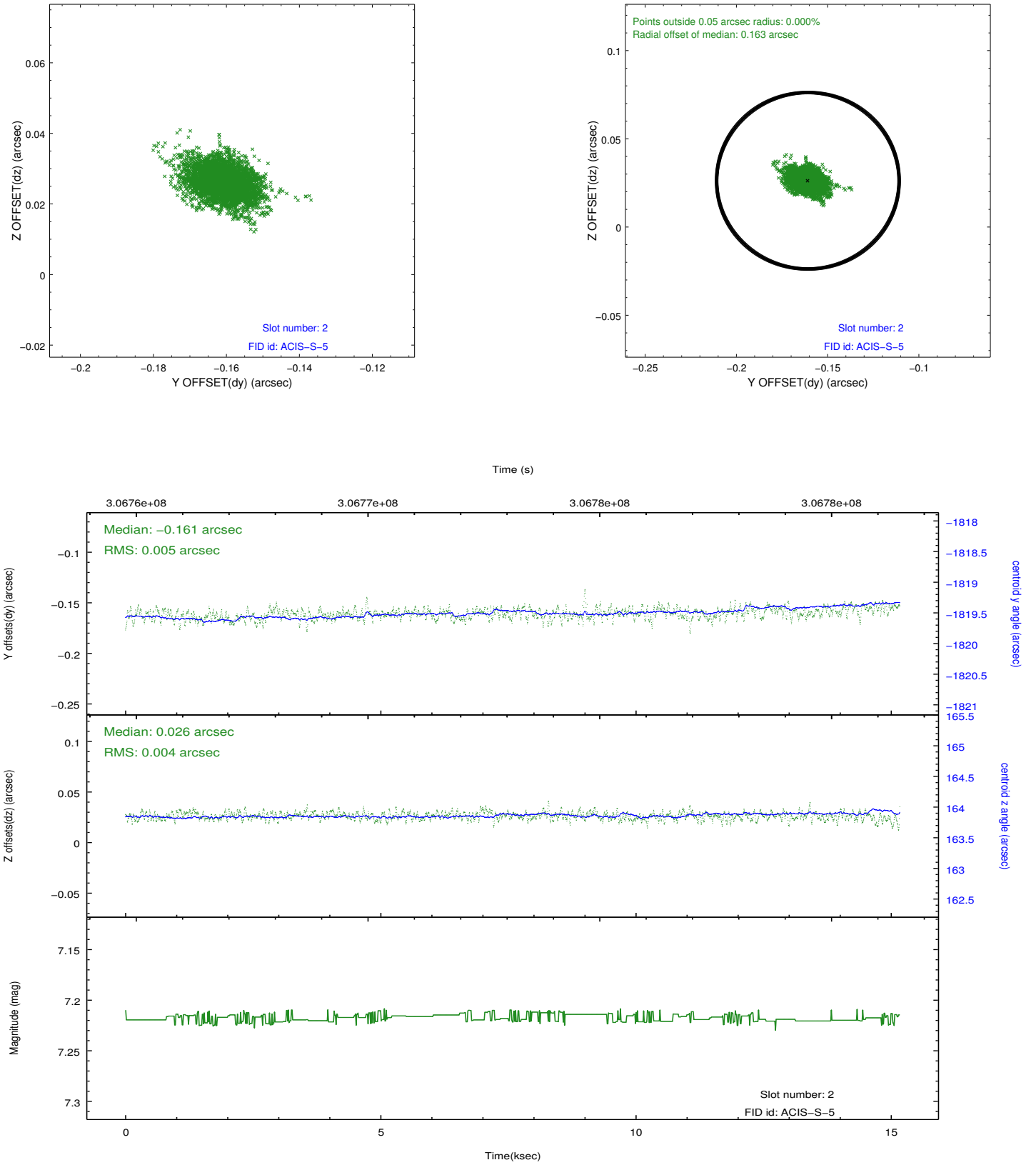
2.5.1 Slot 0



2.5.2 Slot 1



2.5.3 Slot 2



A Summary

A.1 Status

V&V Scientist	Jen Lauer
V&V Date (YYYY-MM-DD)	2012.05.03
V&V Edition	1
V&V Disposition and Status	OK
V&V Charge Time	15.1683001

A.2 Comments