

# V&V Reference Report

## L2 ASCDS Version : 8.4.4

Observation 7754 - L2 Version 3  
Chandra X-Ray Center

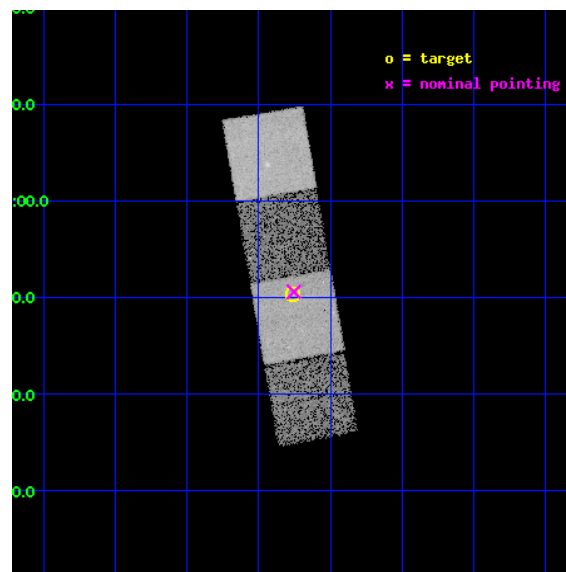
L2 Processing Date : Apr 21 2012

## Contents

<b>1</b>	<b>Front</b>	<b>2</b>
<b>2</b>	<b>OBI</b>	<b>3</b>
2.1	OBI . . . . .	3
2.1.1	Images . . . . .	3
2.1.2	Bias . . . . .	3
2.1.3	Parameters . . . . .	4
2.1.4	Events . . . . .	4
2.2	Compared Parameters . . . . .	5
2.3	Aspect . . . . .	6
2.4	Star Slots . . . . .	9
2.4.1	Slot 3 . . . . .	9
2.4.2	Slot 4 . . . . .	10
2.4.3	Slot 5 . . . . .	11
2.4.4	Slot 6 . . . . .	12
2.4.5	Slot 7 . . . . .	13
2.5	FID Slots . . . . .	14
2.5.1	Slot 0 . . . . .	14
2.5.2	Slot 1 . . . . .	15
2.5.3	Slot 2 . . . . .	16
<b>A</b>	<b>Summary</b>	<b>17</b>
A.1	Status . . . . .	17
A.2	Comments . . . . .	17

# 1 Front

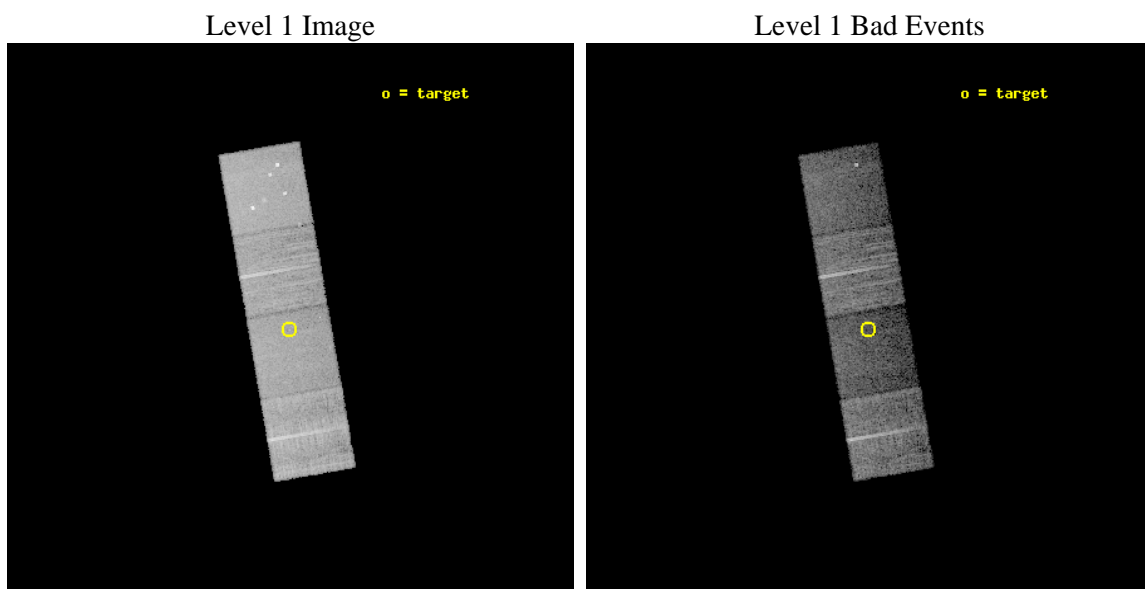
seq_num	701422	Sequence number
obs_id	7754	Observation id
title	Probing heavy obscuration in optically selected Type 2 quasar candidates	Proposal title
observer	Dr Cristian Vignali	Principal investigator
object	SDSS J122845.74+005018.7	Source name
dtcycle	0	&#160
cycle	P	events from which exps? Prim/Second/Both
ra_targ	187.190417	Observer's specified target RA [deg]
dec_targ	0.838528	Observer's specified target Dec [deg]
ra_nom	187.18857212331	Nominal RA [deg]
dec_nom	0.84303744285081	Nominal Dec [deg]
roll_nom	80.112668619783	Nominal Roll [deg]
revision	3	Processing version of data
ontime	9544.6336526275	Sum of GTIs [s]
livetime	9419.9259872988	Livetime [s]
ontime5	9544.5926126242	Sum of GTIs [s]
ontime6	9544.5515726209	Sum of GTIs [s]
ontime7	9544.6336526275	Sum of GTIs [s]
ontime8	9544.5105326176	Sum of GTIs [s]
l2events	86397	Number of level 2 events



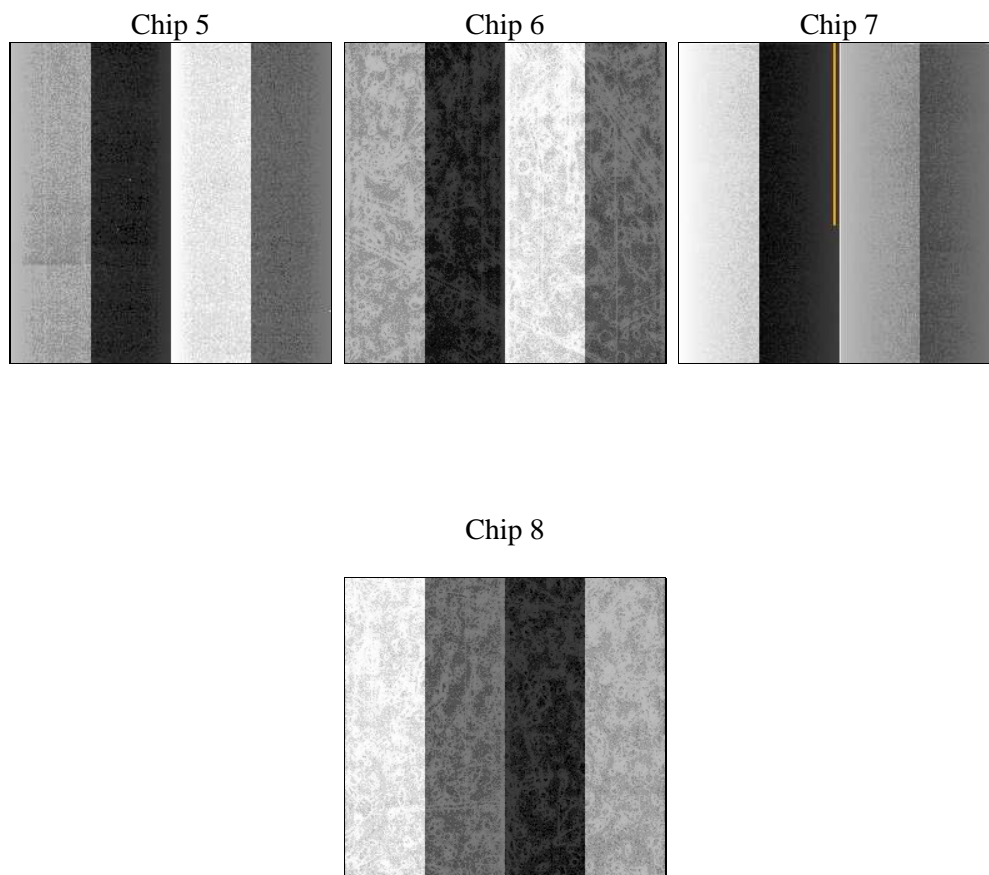
## 2 OBI

### 2.1 OBI

#### 2.1.1 Images



#### 2.1.2 Bias



### 2.1.3 Parameters

obi_num	0	Obi number	sched_exp_time	9500.000000	[s] Scheduled observation exposure time
ascdsver	8.4.4	Processing system revision	ontime	9544.6336526275	Sum of GTIs [s]
caldsver	4.4.9	&#160	ontime5	9544.5926126242	Sum of GTIs [s]
date	2012-04-21T13:19:23	Date and time of file creation	ontime6	9544.5515726209	Sum of GTIs [s]
revision	3	Processing version of data	ontime7	9544.6336526275	Sum of GTIs [s]
			ontime8	9544.5105326176	Sum of GTIs [s]
			l1events	308425	Number of level 1 events

### 2.1.4 Events

	ccd 5	ccd 6	ccd 7	ccd 8
level 1 events	88197	69392	65606	85230
rejected events	41041	62242	33045	63799
rejected %	46%	89%	50%	74%

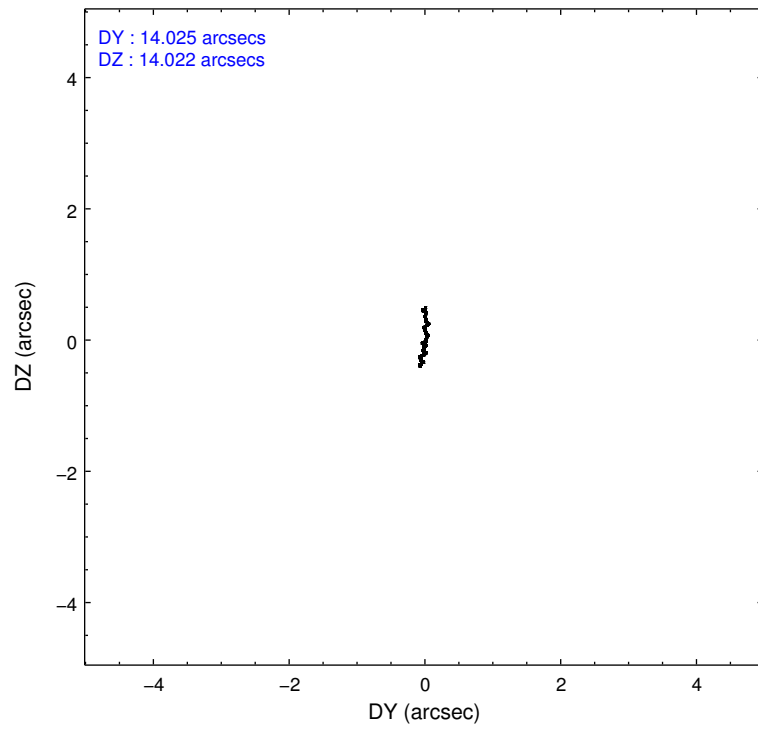
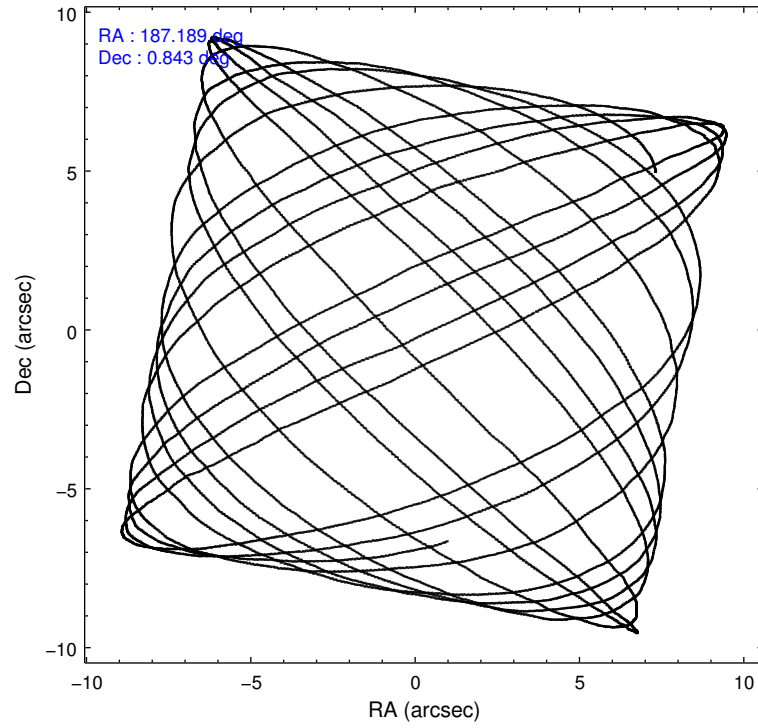
	ccd 5	ccd 6	ccd 7	ccd 8
grade 0 events	6621	2724	3620	5637
	7%	3%	5%	6%
grade 1 events	185	34	92	66
	0%	0%	0%	0%
grade 2 events	13955	1522	6924	5012
	15%	2%	10%	5%
grade 3 events	2239	804	3119	2438
	2%	1%	4%	2%
grade 4 events	1892	740	3082	2293
	2%	1%	4%	2%
grade 5 events	7411	2340	7135	3581
	8%	3%	10%	4%
grade 6 events	22470	1361	15834	6052
	25%	1%	24%	7%
grade 7 events	33424	59867	25800	60151
	37%	86%	39%	70%

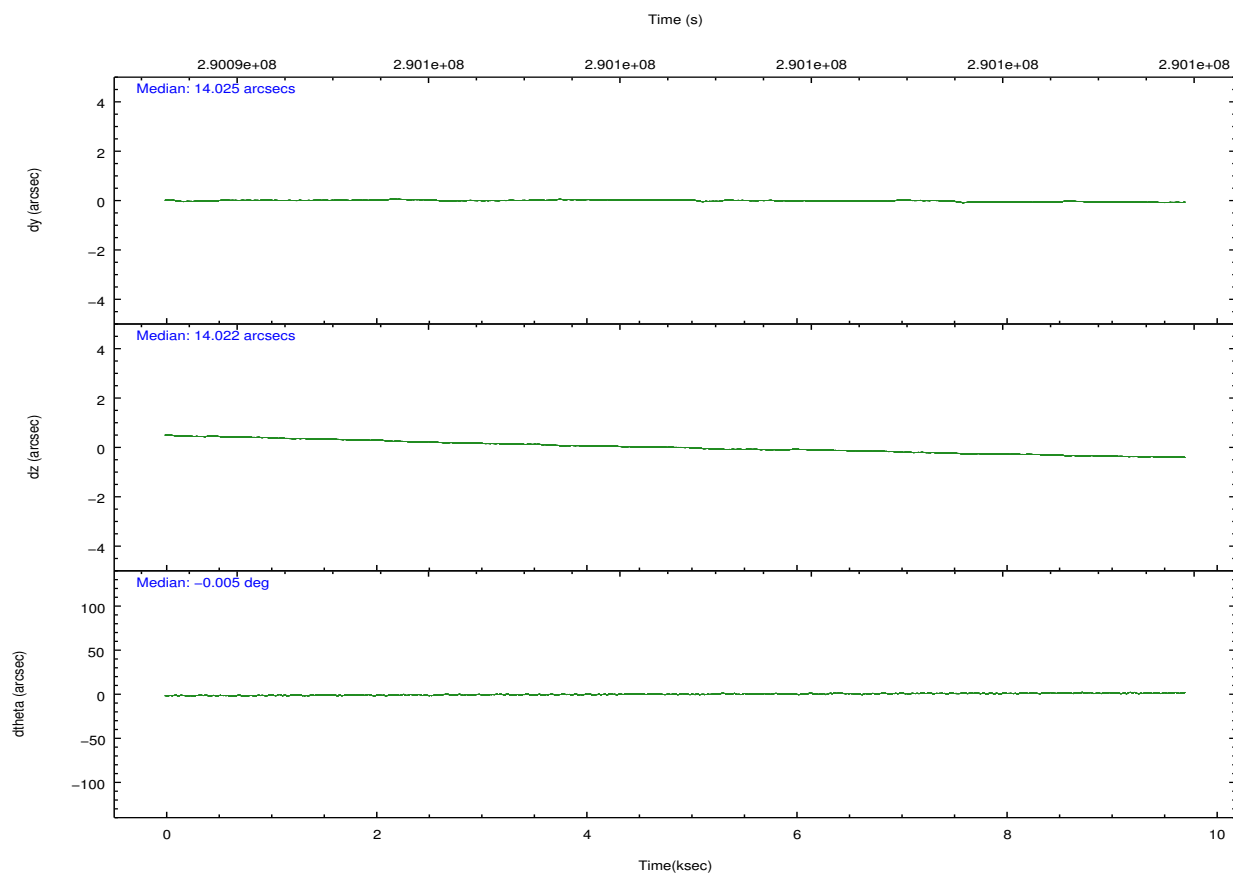
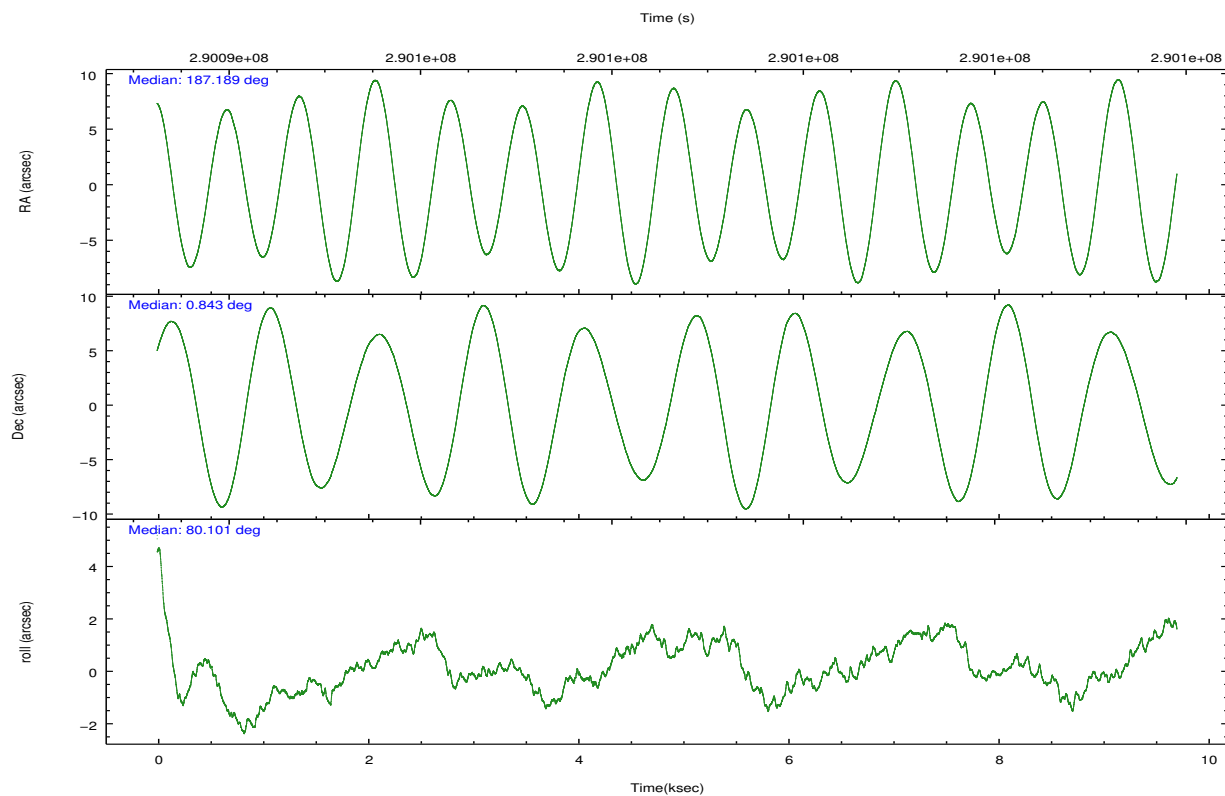


## 2.2 Compared Parameters

Parameter	Planned	Actual	Parameter	Planned	Actual
Instrument	ACIS	ACIS	Obspar format version number	7	7
Detector	ACIS-5678	ACIS-5678	Obspar file type	PREDICTED	ACTUAL
Grating	NONE	NONE	Obspar update status	NONE	UPDATED
Data mode	VFAINT	VFAINT	Number of optional ACIS chips dropped	0	0
Observation mode	POINTING	POINTING	On-chip summing requested	N	N
[deg] Pointing RA	187.198375	187.188572123306	Subarray requested	NONE	NONE
[deg] Pointing Dec	0.817487	0.8430374428508057	Alternating exposures requested	N	N
[deg] Pointing Roll	79.955899	80.11266861978308	[s] Primary exposure time	0.000000	3.1
[mm] SIM focus pos	-0.684267	-0.6828225247311905			
[mm] SIM defocus	0	0.001444936568705701			
[mm] SIM translation stage pos	-190.132523	-190.1425803651734			
[mm] SIM translation stage offset	0	0.01005778216563158			
[s] Observation start time (MET)	290093922.184000	290093038.94443			
Observation start date	2007-03-12T13:37:37	2007-03-12T13:23:58			
[s] Observation end time (MET)	290103422.184000	290104312.40746			
Observation end date	2007-03-12T16:15:57	2007-03-12T16:31:52			
Read mode	TIMED	TIMED			

## 2.3 Aspect



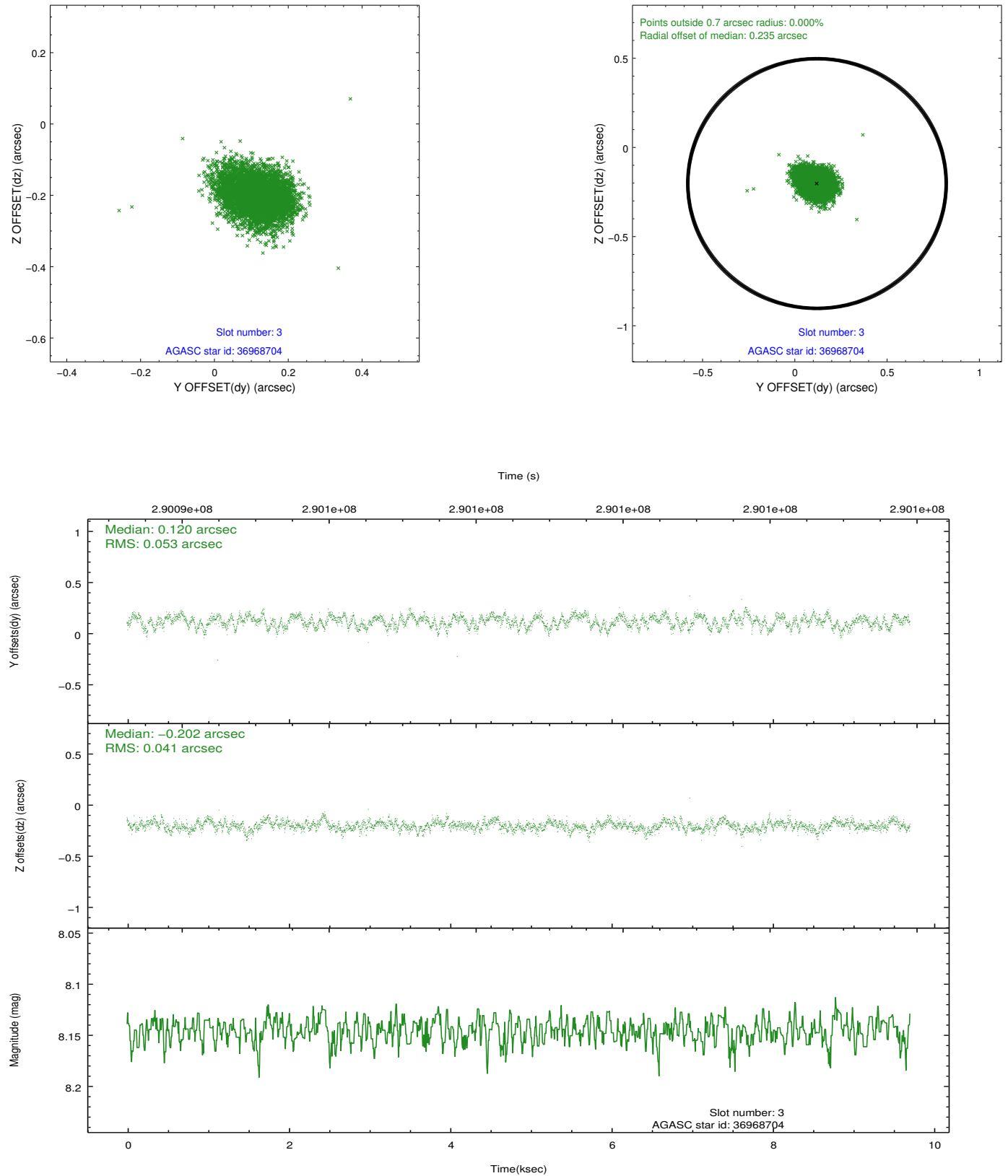


### Slot Statistics

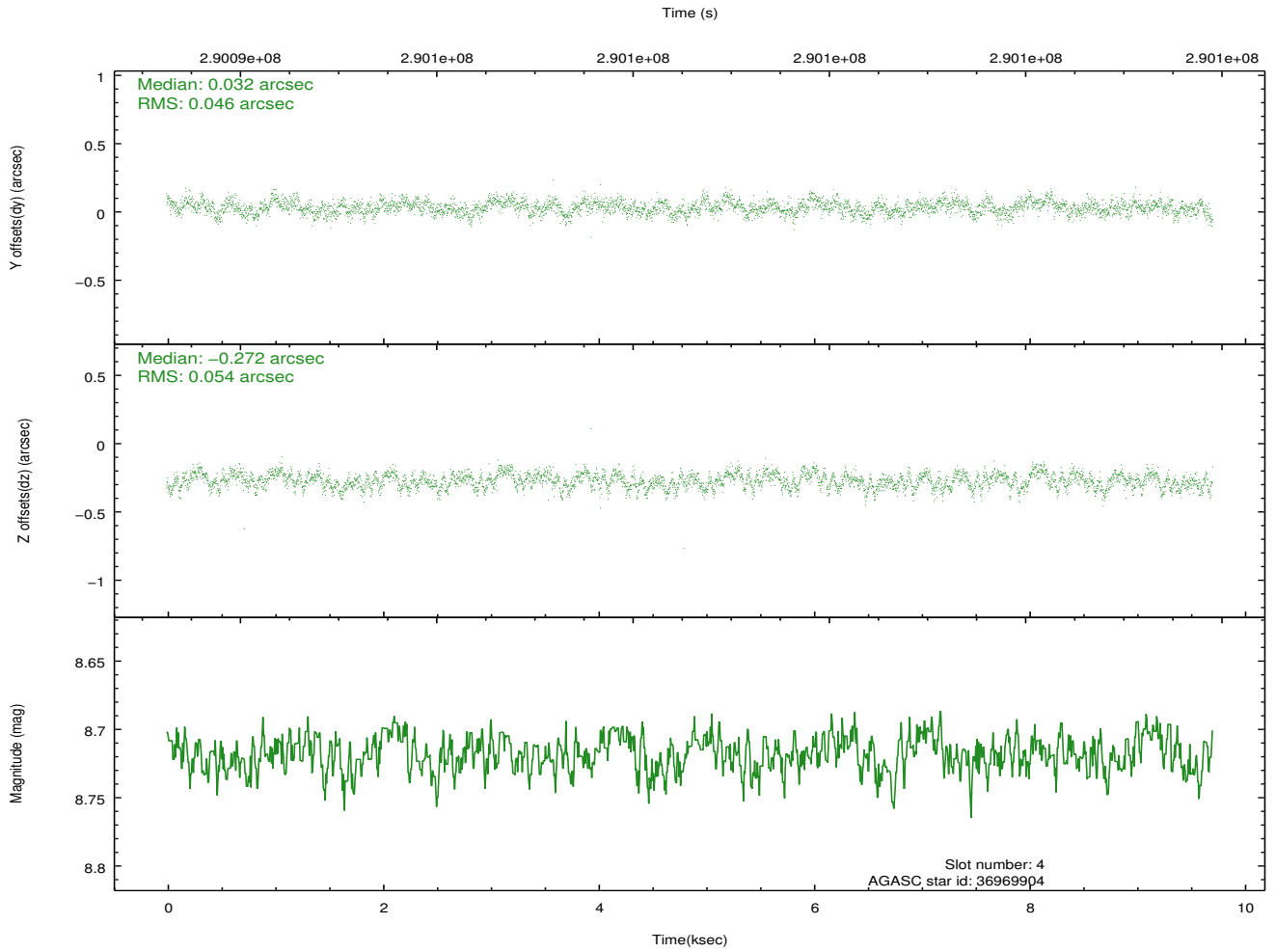
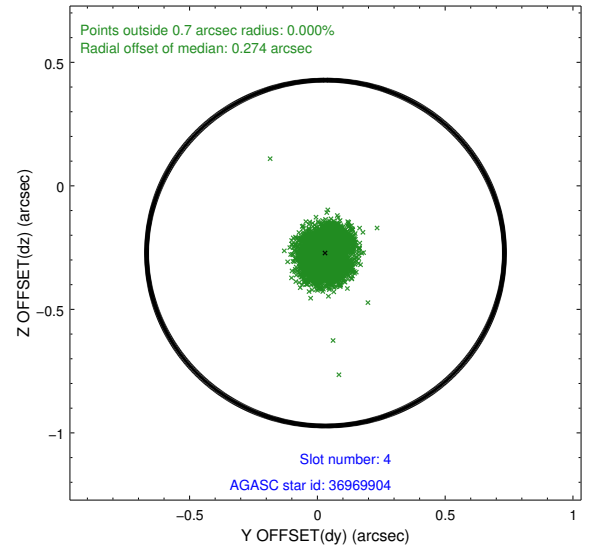
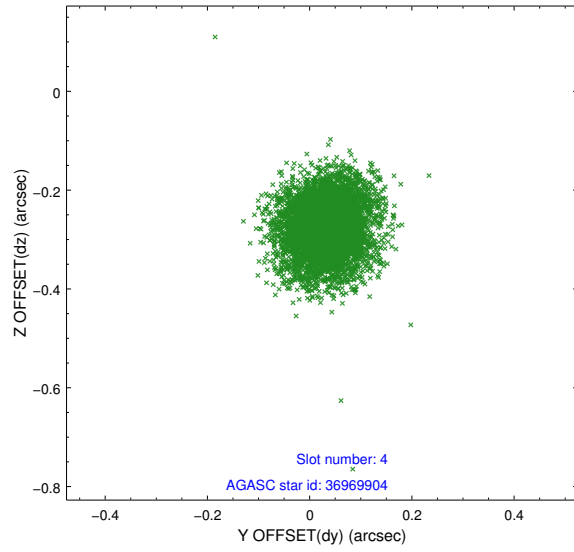
slot	status	id	mag	n_pts	med_dy	med_dz	dr1	dr2	ra	dec	mean_y	mean_z
0	FID	ACIS-S-1	7.18	2368	0.045	-0.024	0.009	0.015	0.000000	0.000000	929.10	-1731.00
1	FID	ACIS-S-4	7.20	2368	0.154	-0.001	0.009	0.015	0.000000	0.000000	2146.93	172.60
2	FID	ACIS-S-5	7.22	2368	-0.227	0.037	0.007	0.011	0.000000	0.000000	-1819.32	166.89
3	GUIDE	36968704	8.15	4736	0.120	-0.202	0.071	0.114	186.570138	0.514751	-1467.59	2036.88
4	GUIDE	36969904	8.72	4734	0.032	-0.272	0.075	0.122	187.225753	1.148526	1189.76	111.96
5	GUIDE	37884544	9.30	4735	-0.193	0.417	0.099	0.159	187.813486	1.124827	1476.54	-1986.20
6	GUIDE	37886568	9.20	4726	0.030	0.074	0.109	0.180	187.619251	0.574407	-596.46	-1644.79
7	GUIDE	37888096	8.57	4734	0.018	-0.011	0.084	0.139	187.726187	0.664782	-209.34	-1966.22

## 2.4 Star Slots

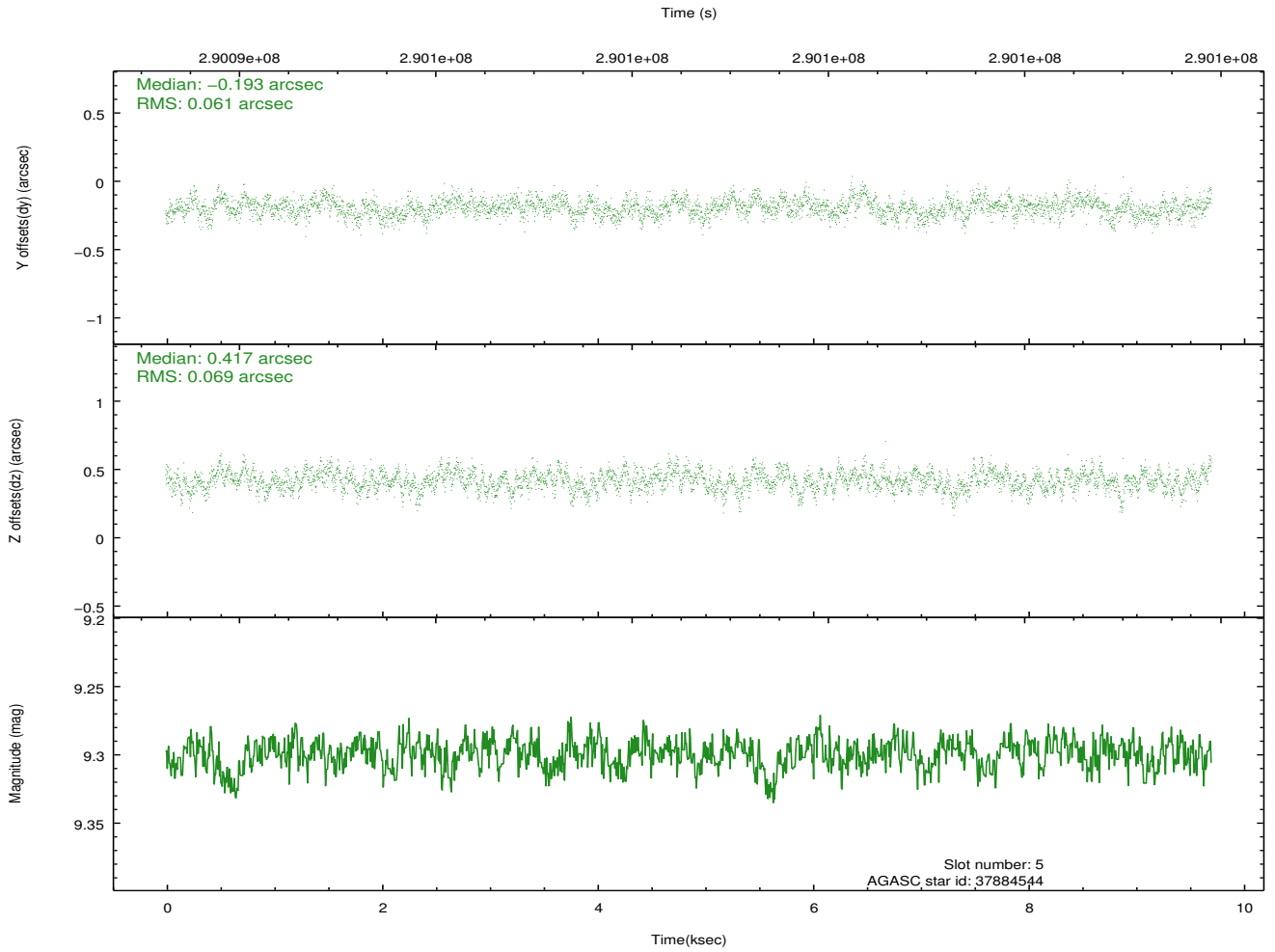
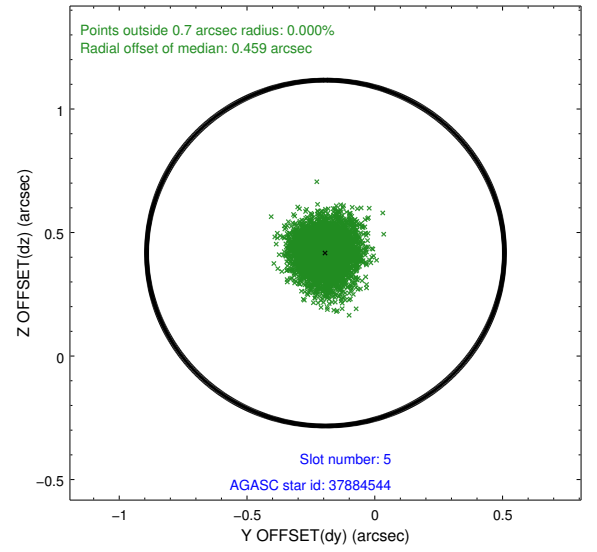
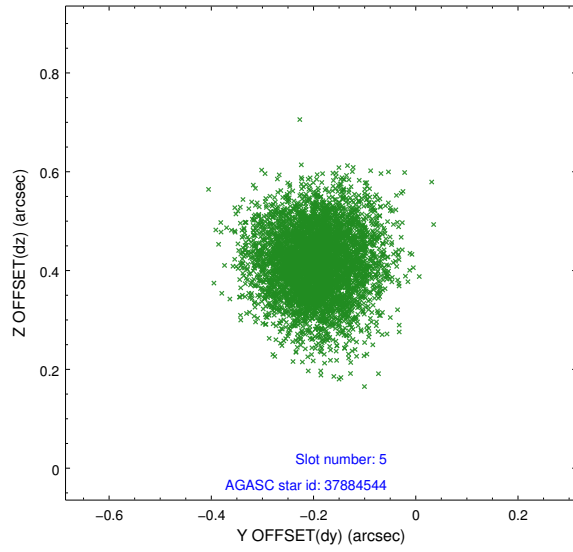
### 2.4.1 Slot 3



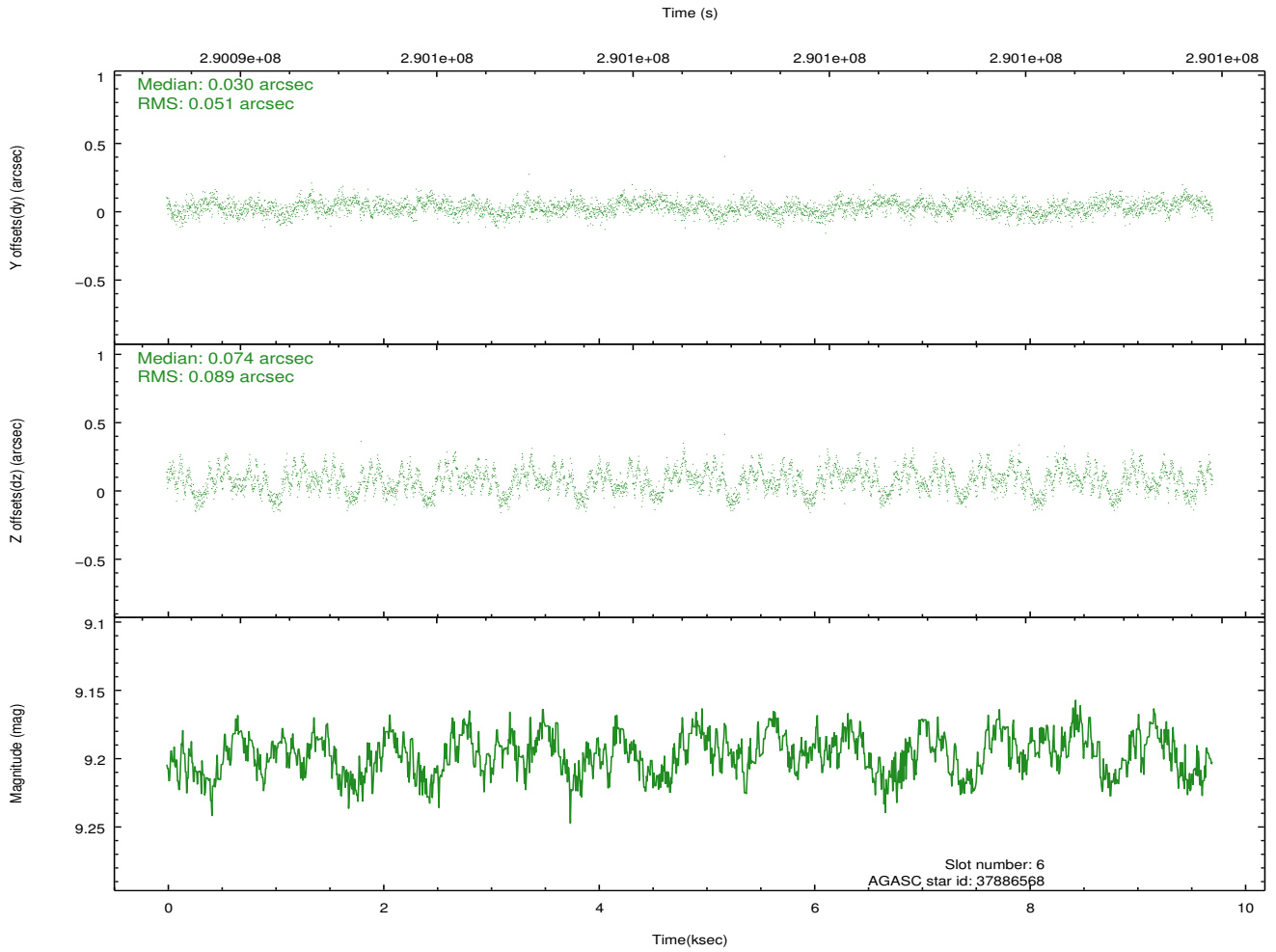
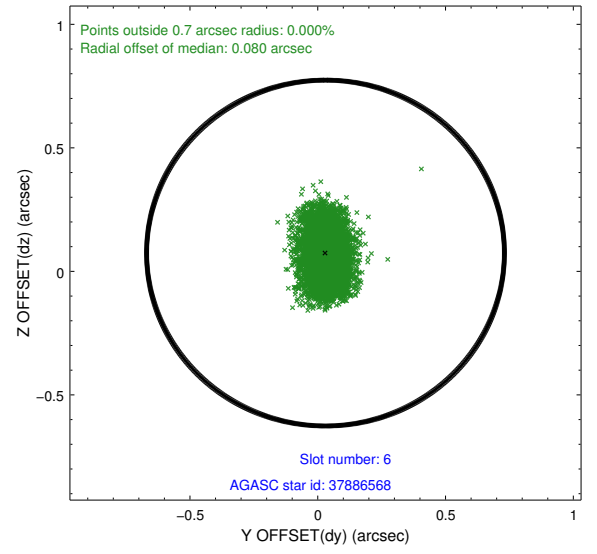
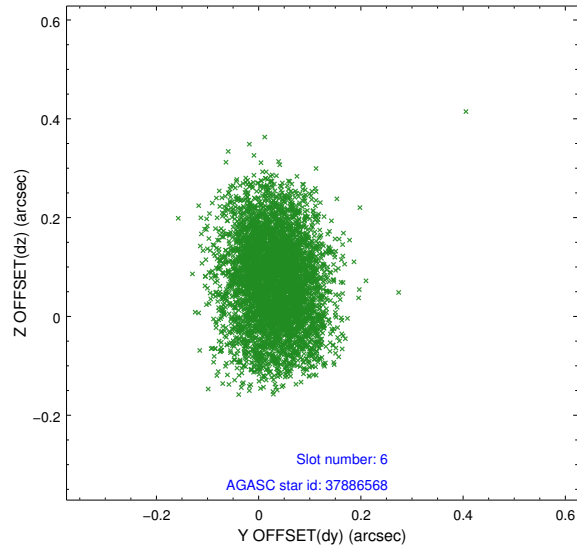
## 2.4.2 Slot 4



### 2.4.3 Slot 5

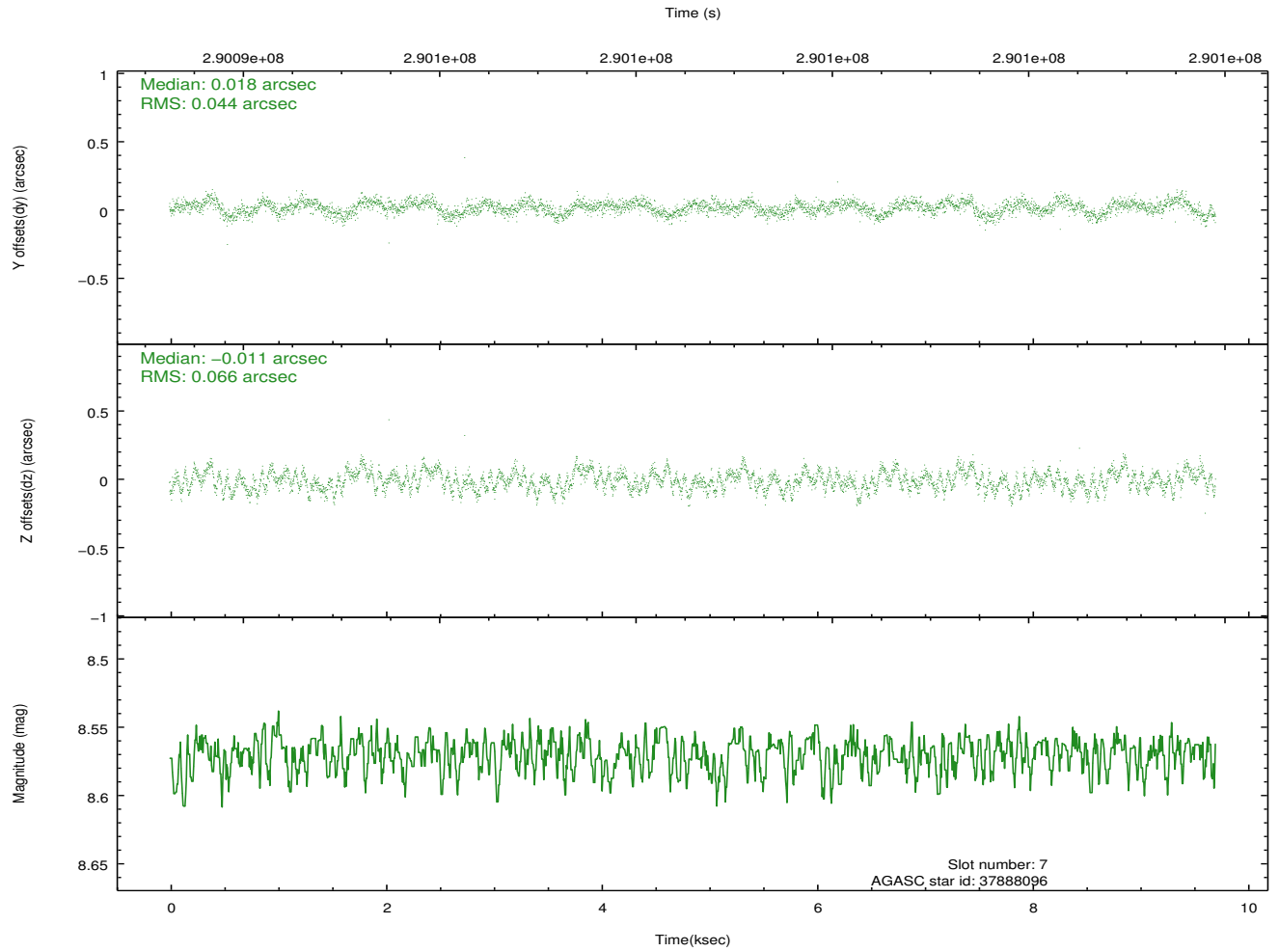
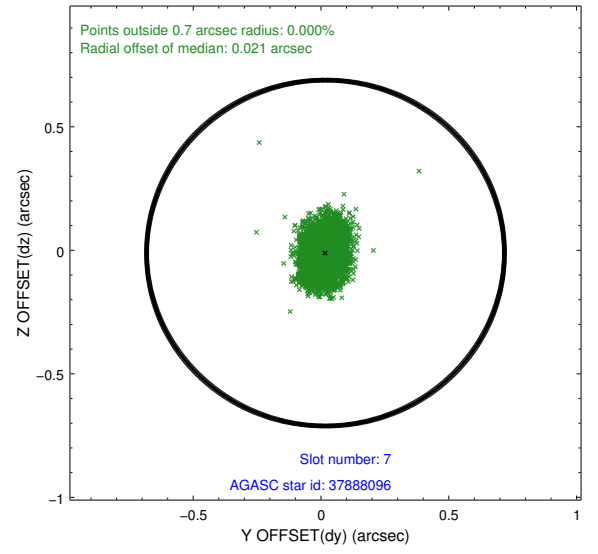
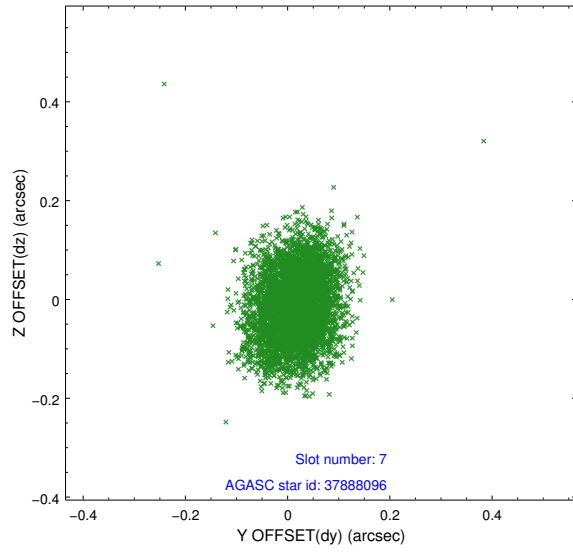


## 2.4.4 Slot 6



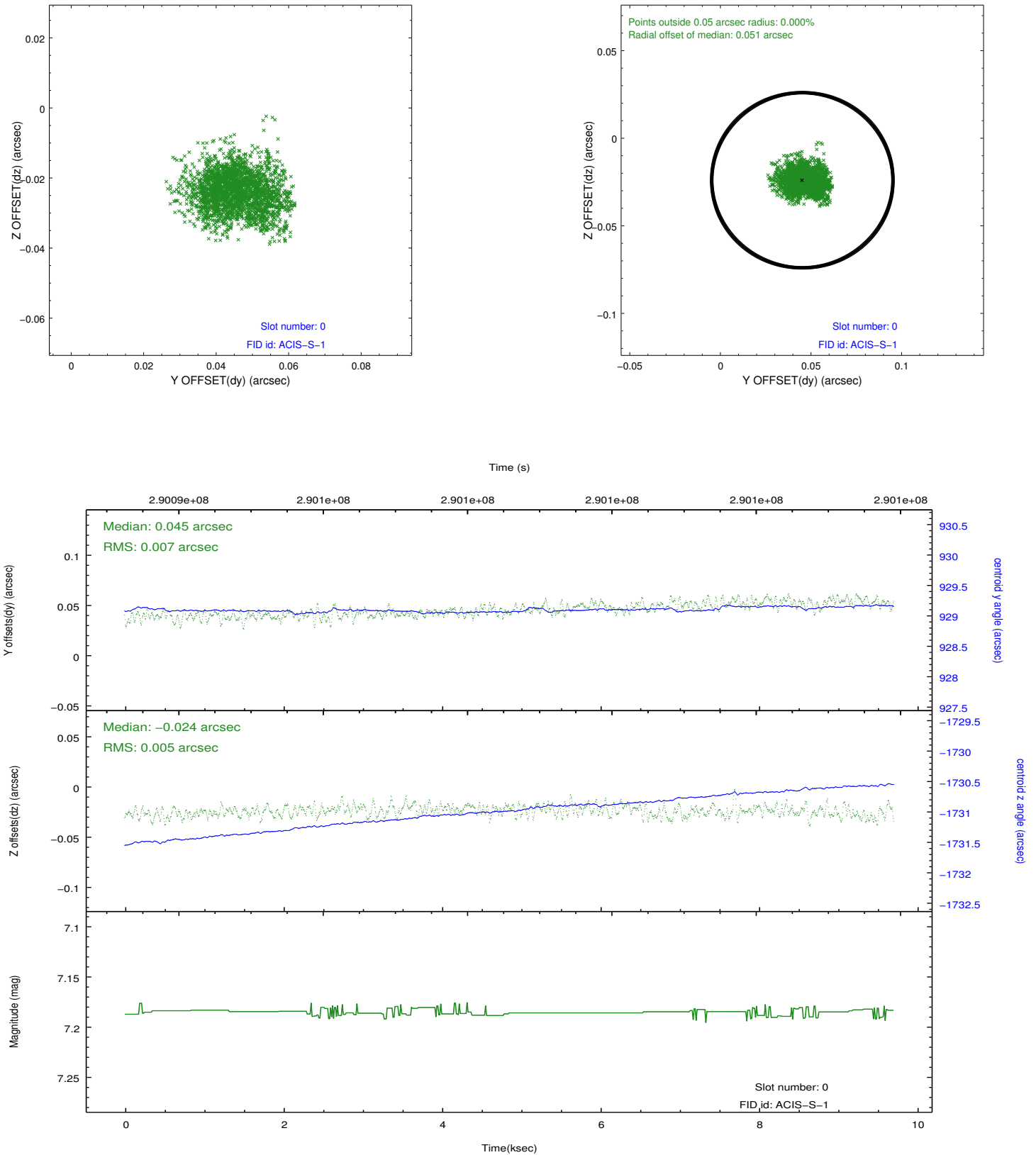


## 2.4.5 Slot 7

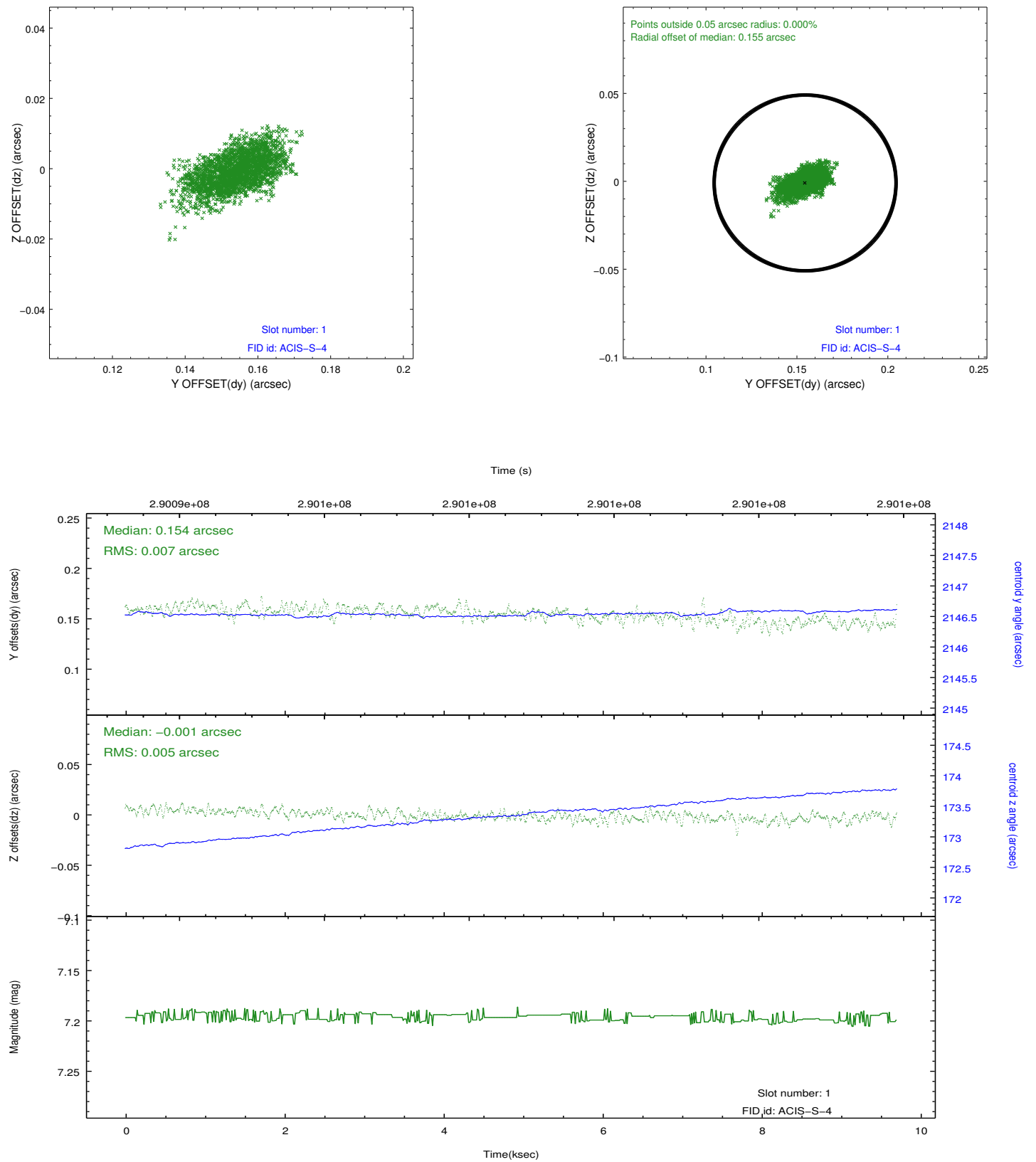


## 2.5 FID Slots

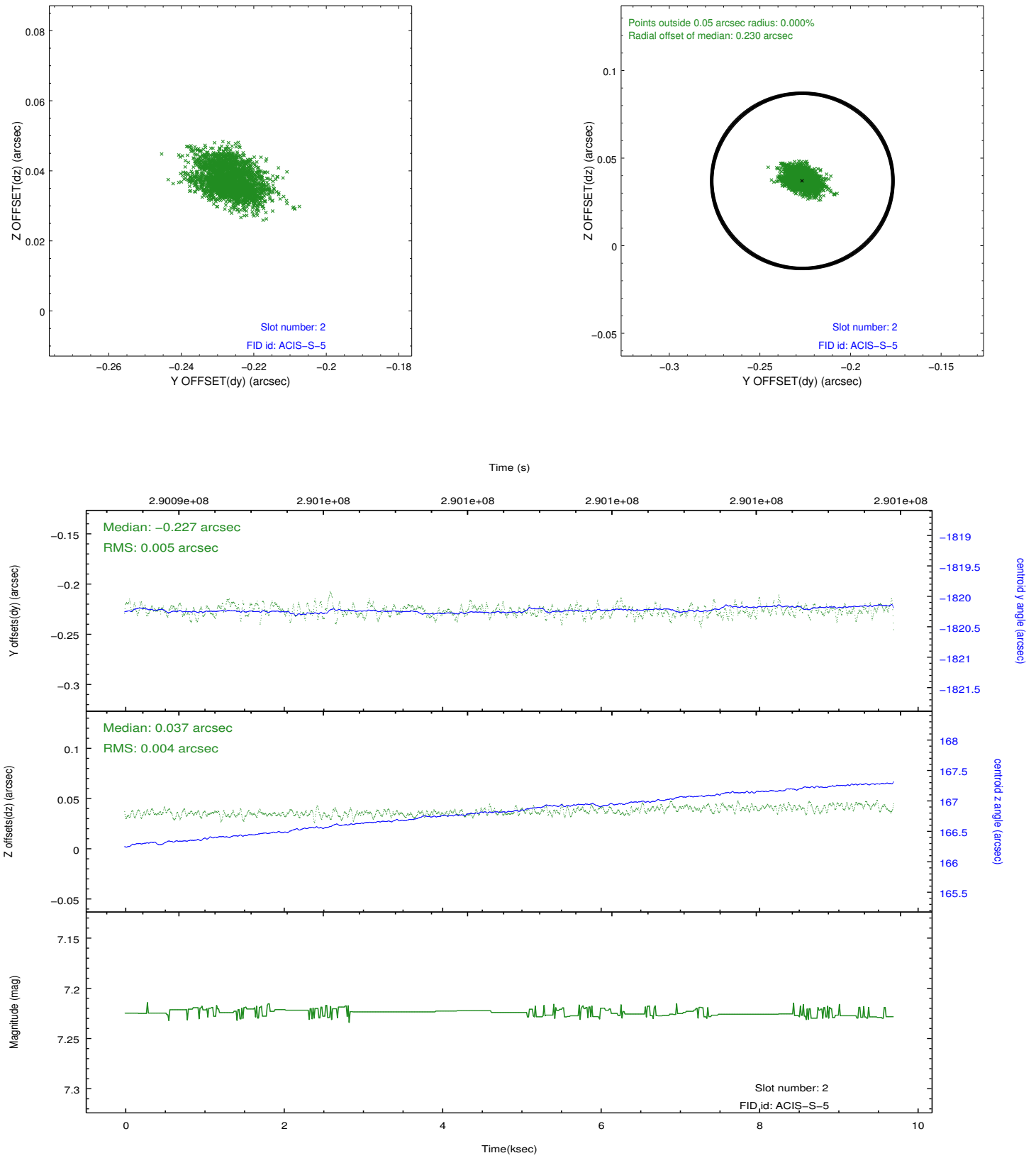
### 2.5.1 Slot 0



## 2.5.2 Slot 1



### 2.5.3 Slot 2



## A Summary

### A.1 Status

V&V Scientist	Beth Sundheim
V&V Date (YYYY-MM-DD)	2012.04.23
V&V Edition	1
V&V Disposition and Status	OK
V&V Charge Time	9.54490007

### A.2 Comments