

V&V Reference Report

L2 ASCDS Version : 8.4.4

Observation 7746 - L2 Version 2
Chandra X-Ray Center

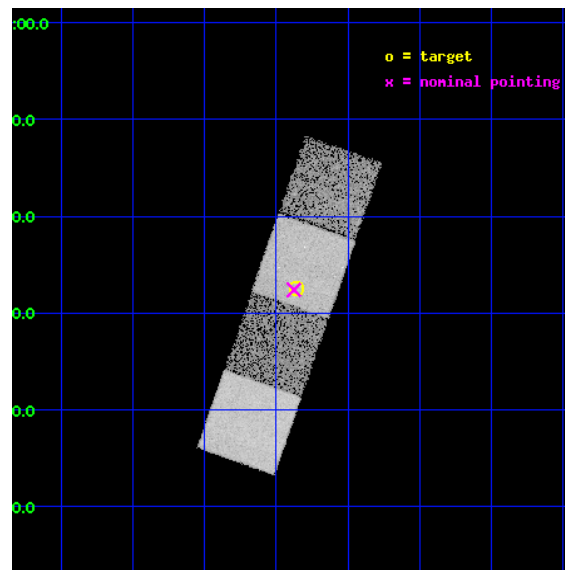
L2 Processing Date : May 9 2012

Contents

1	Front	2
2	OBI	3
2.1	OBI	3
2.1.1	Images	3
2.1.2	Bias	3
2.1.3	Parameters	4
2.1.4	Events	4
2.2	Compared Parameters	5
2.3	Aspect	6
2.4	Star Slots	9
2.4.1	Slot 3	9
2.4.2	Slot 4	10
2.4.3	Slot 5	11
2.4.4	Slot 6	12
2.4.5	Slot 7	13
2.5	FID Slots	14
2.5.1	Slot 0	14
2.5.2	Slot 1	15
2.5.3	Slot 2	16
A	Summary	17
A.1	Status	17
A.2	Comments	17

1 Front

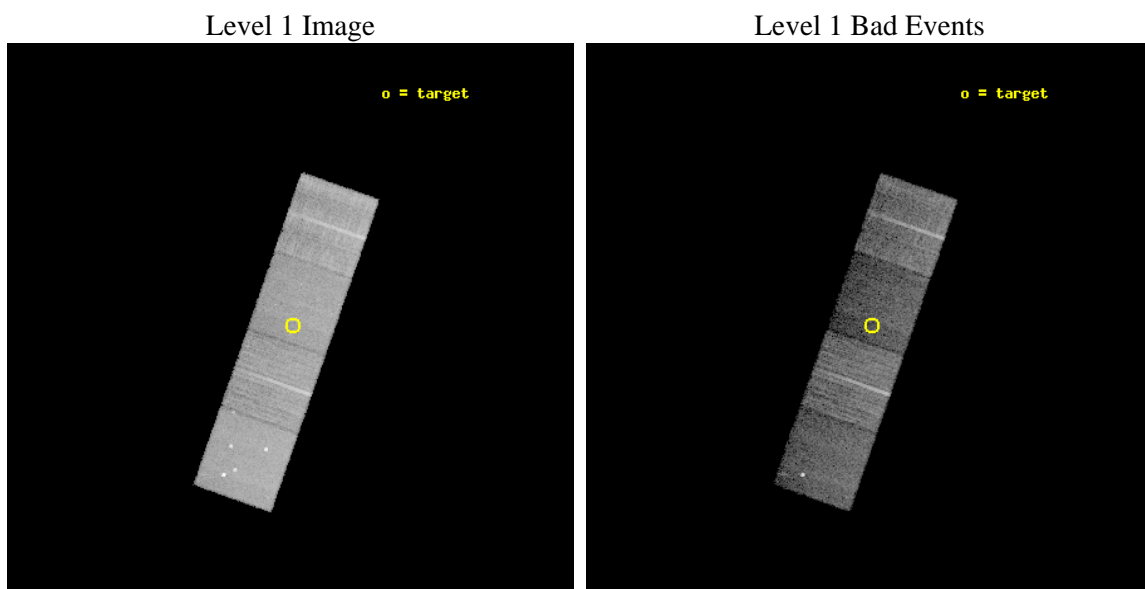
seq_num	701414	Sequence number
obs_id	7746	Observation id
title	Probing heavy obscuration in optically selected Type 2 quasar candidates	Proposal title
observer	Dr Cristian Vignali	Principal investigator
object	SDSS J005621.72+003235.8	Source name
dtcycle	0	
cycle	P	events from which exps? Prim/Second/Both
ra_targ	14.090417	Observer's specified target RA [deg]
dec_targ	0.543278	Observer's specified target Dec [deg]
ra_nom	14.094161648578	Nominal RA [deg]
dec_nom	0.54025247539	Nominal Dec [deg]
roll_nom	289.3044716969	Nominal Roll [deg]
revision	2	Processing version of data
ontime	10043.668741703	Sum of GTIs [s]
livetime	9912.4408155513	Livetime [s]
ontime5	10043.6277017	Sum of GTIs [s]
ontime6	10043.586661696	Sum of GTIs [s]
ontime7	10043.668741703	Sum of GTIs [s]
ontime8	10040.404631495	Sum of GTIs [s]
l2events	97171	Number of level 2 events



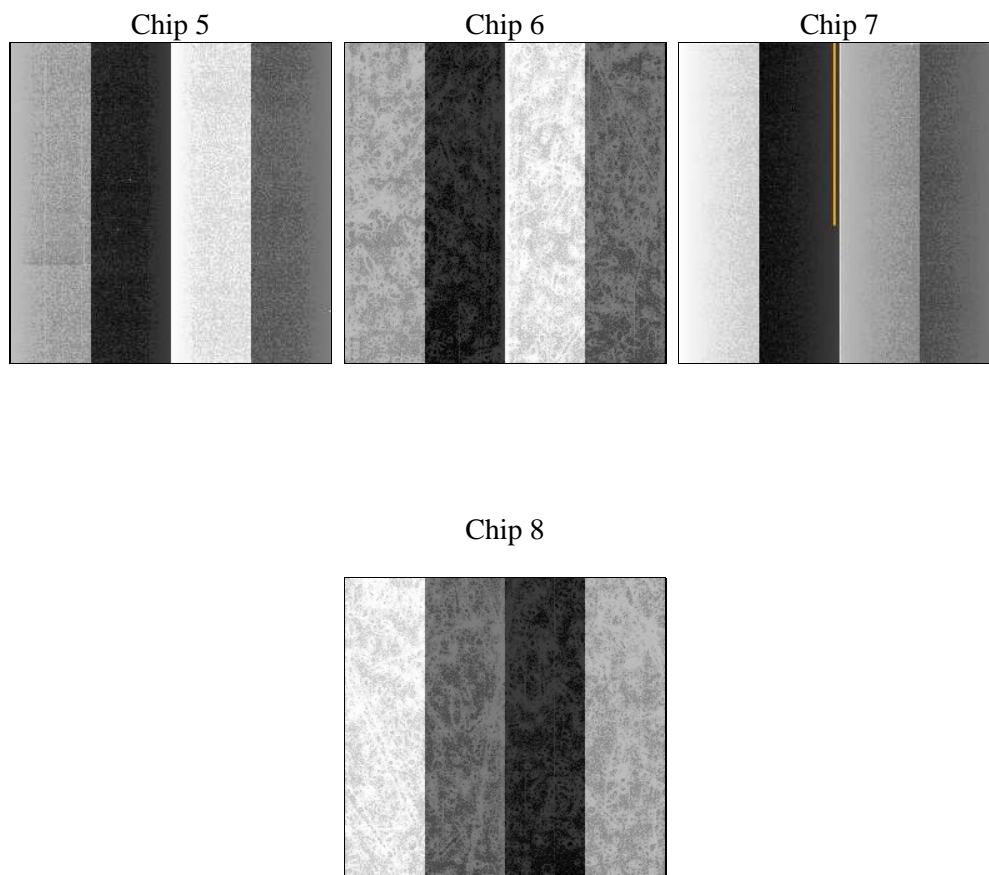
2 OBI

2.1 OBI

2.1.1 Images



2.1.2 Bias



2.1.3 Parameters

obi_num	0	Obi number	sched_exp_time	10000.000000	[s] Scheduled observation exposure time
ascdsver	8.4.4	Processing system revision	ontime	10043.668741703	Sum of GTIs [s]
caldsver	4.4.9	 	ontime5	10043.6277017	Sum of GTIs [s]
date	2012-05-09T04:32:17	Date and time of file creation	ontime6	10043.586661696	Sum of GTIs [s]
revision	2	Processing version of data	ontime7	10043.668741703	Sum of GTIs [s]
			ontime8	10040.404631495	Sum of GTIs [s]
			l1events	341426	Number of level 1 events

2.1.4 Events

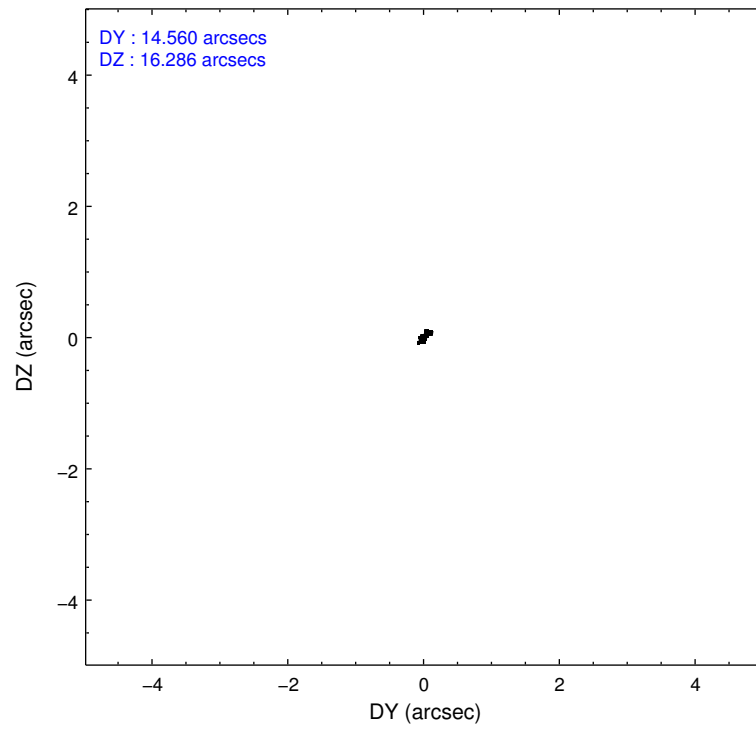
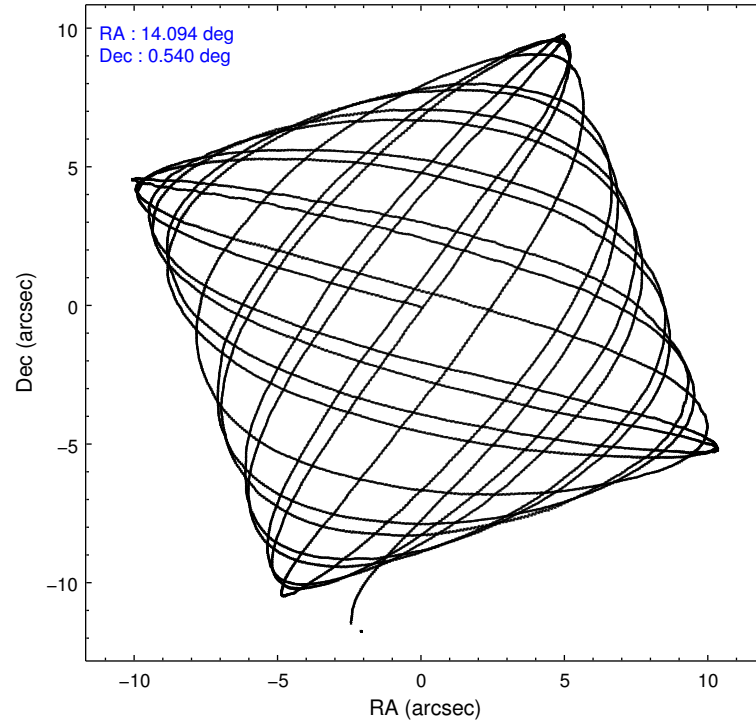
	ccd 5	ccd 6	ccd 7	ccd 8
level 1 events	99073	76879	72728	92746
rejected events	45954	69112	36234	67917
rejected %	46%	89%	49%	73%

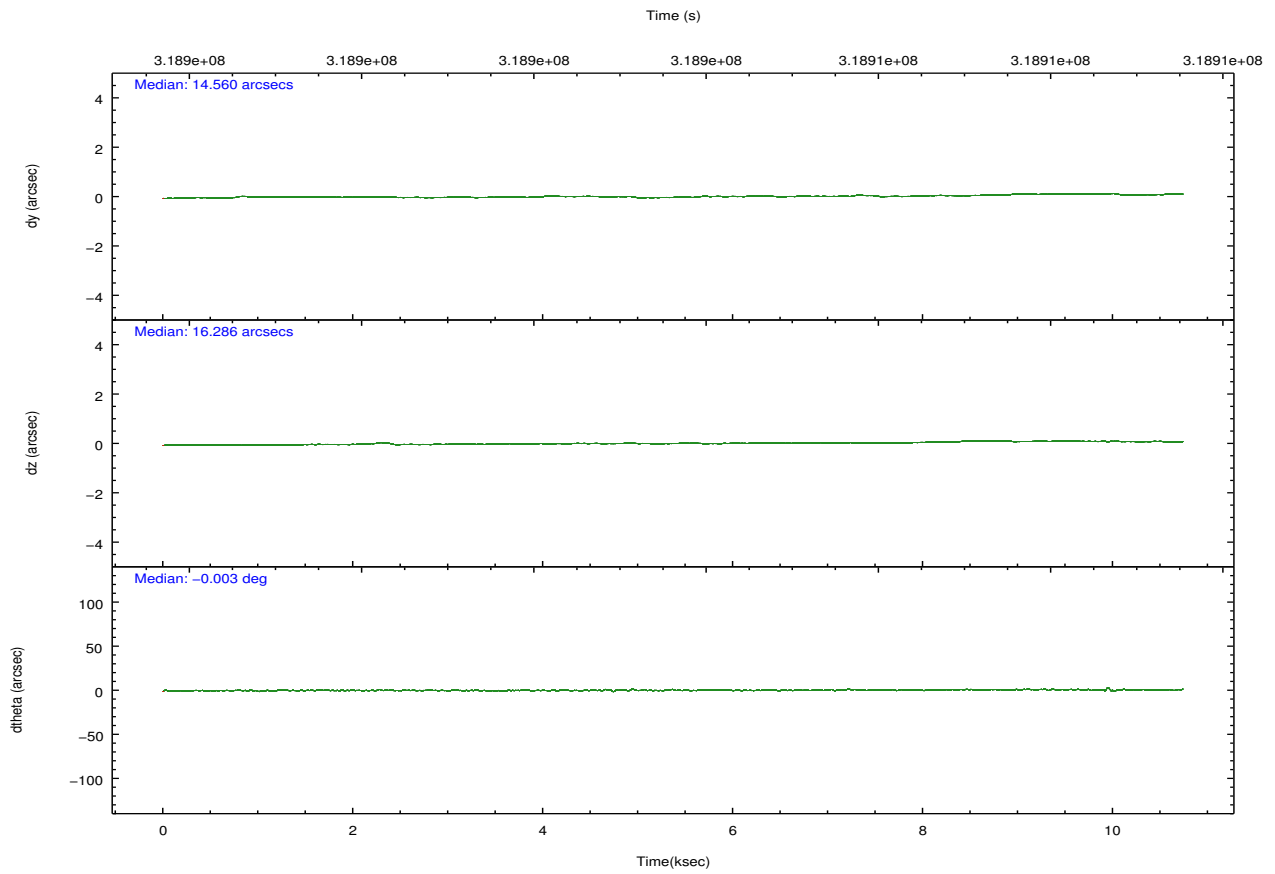
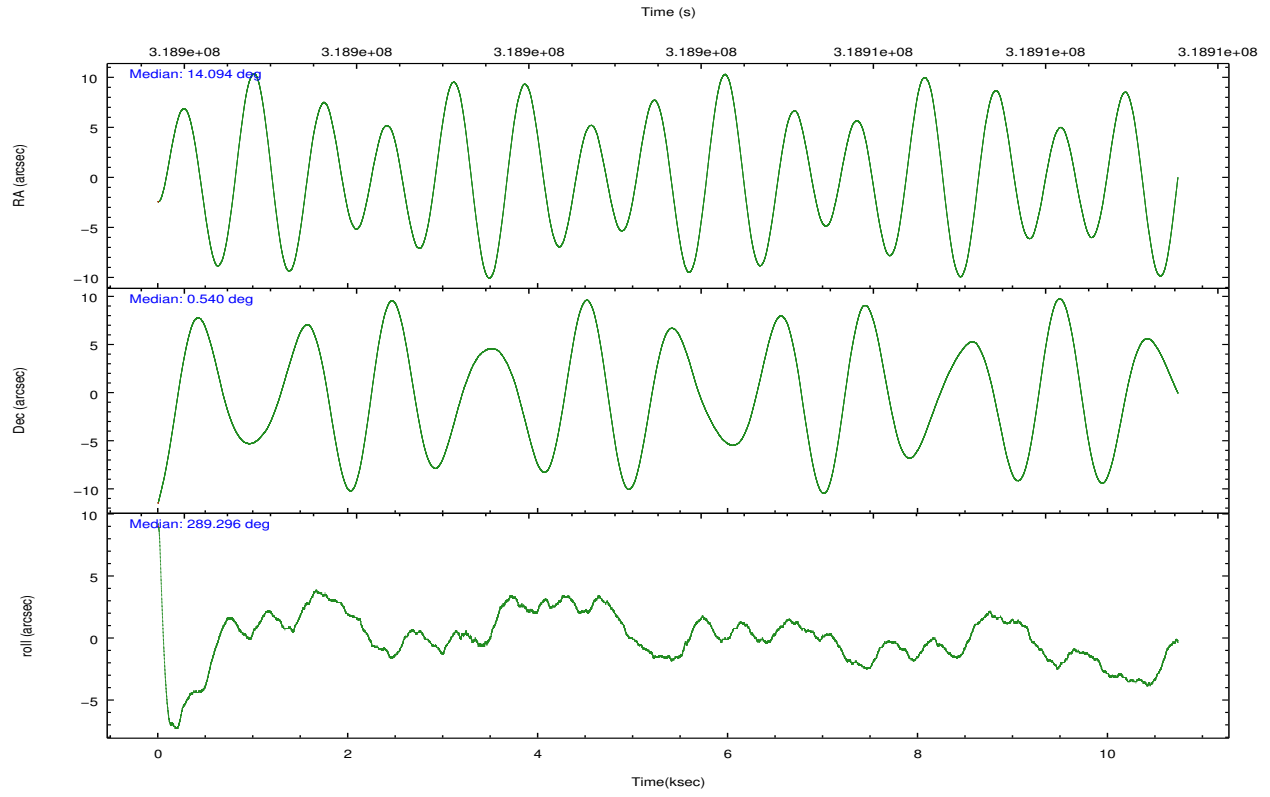
	ccd 5	ccd 6	ccd 7	ccd 8
grade 0 events	7753	2879	3930	7431
	7%	3%	5%	8%
grade 1 events	575	39	133	69
	0%	0%	0%	0%
grade 2 events	15501	1741	7726	5651
	15%	2%	10%	6%
grade 3 events	2393	830	3426	2883
	2%	1%	4%	3%
grade 4 events	2191	806	3451	2637
	2%	1%	4%	2%
grade 5 events	8205	2602	7603	3910
	8%	3%	10%	4%
grade 6 events	25293	1512	17971	6228
	25%	1%	24%	6%
grade 7 events	37162	66470	28488	63937
	37%	86%	39%	68%

2.2 Compared Parameters

Parameter	Planned	Actual	Parameter	Planned	Actual
Instrument	ACIS	ACIS	Obspar format version number	7	7
Detector	ACIS-5678	ACIS-5678	Obspar file type	PREDICTED	ACTUAL
Grating	NONE	NONE	Obspar update status	NONE	UPDATED
Data mode	VFAINT	VFAINT	Number of optional ACIS chips dropped	0	0
Observation mode	POINTING	POINTING	On-chip summing requested	N	N
[deg] Pointing RA	14.073209	14.09416164857815	Subarray requested	NONE	NONE
[deg] Pointing Dec	0.557772	0.5402524753900038	Alternating exposures requested	N	N
[deg] Pointing Roll	289.148043	289.3044716968989	[s] Primary exposure time	0.000000	3.1
[mm] SIM focus pos	-0.684267	-0.6828225247311905			
[mm] SIM defocus	0	0.001444936568705701			
[mm] SIM translation stage pos	-190.132523	-190.1400660498719			
[mm] SIM translation stage offset	0	0.00754346686406393			
[s] Observation start time (MET)	318898983.184000	318897837.866			
Observation start date	2008-02-08T23:01:58	2008-02-08T22:43:57			
[s] Observation end time (MET)	318908983.184000	318909150.27905			
Observation end date	2008-02-09T01:48:38	2008-02-09T01:52:30			
Read mode	TIMED	TIMED			

2.3 Aspect



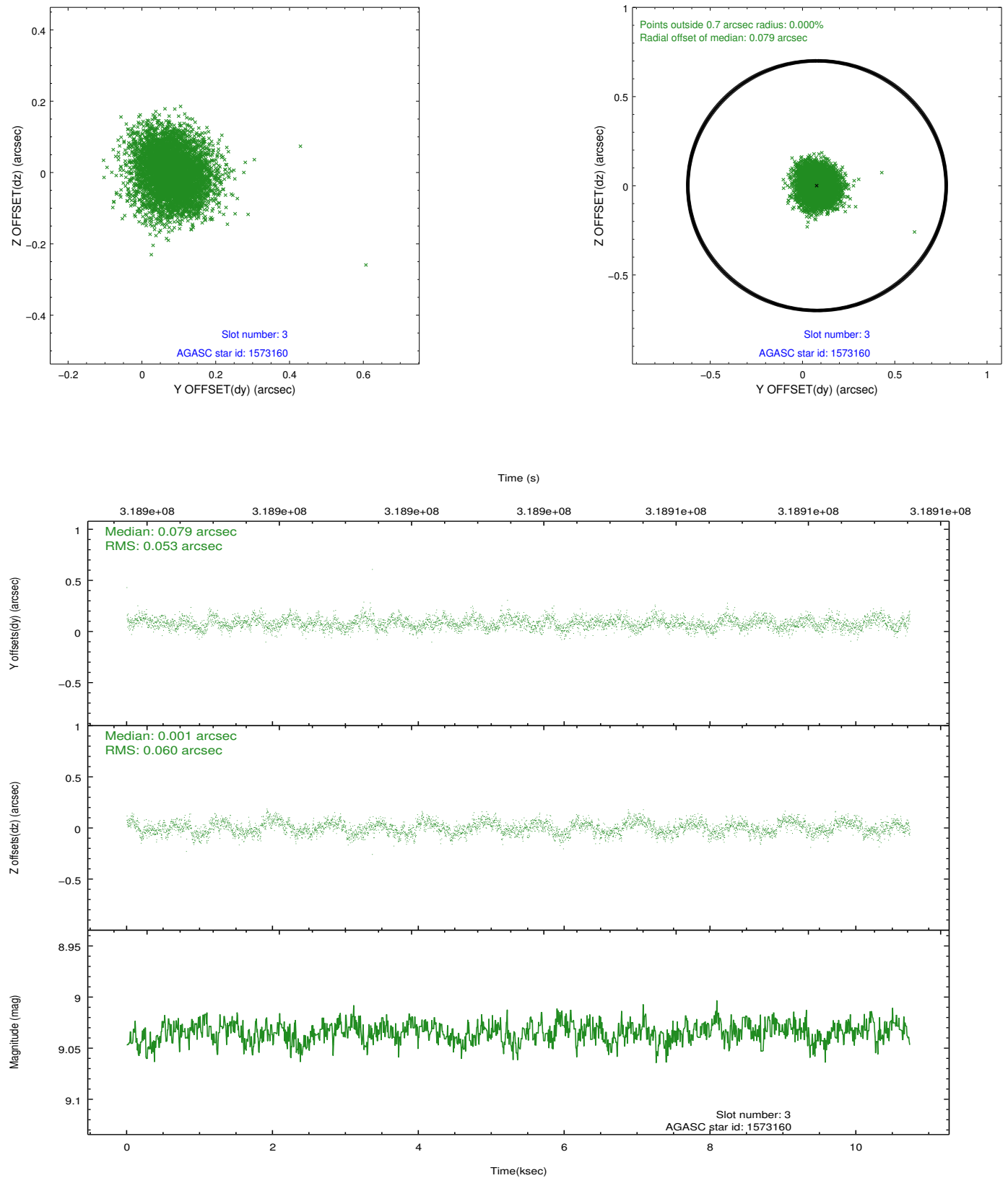


Slot Statistics

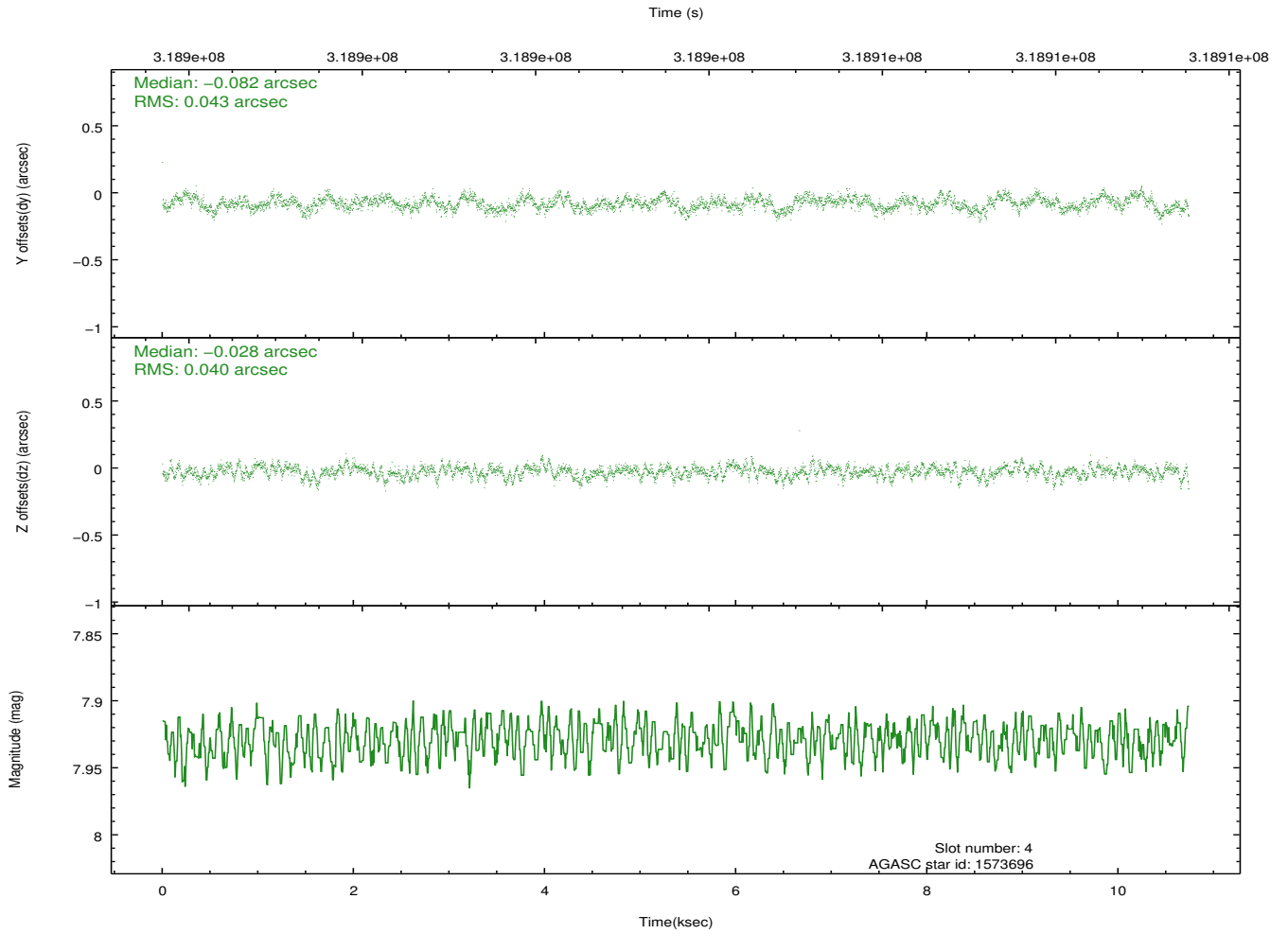
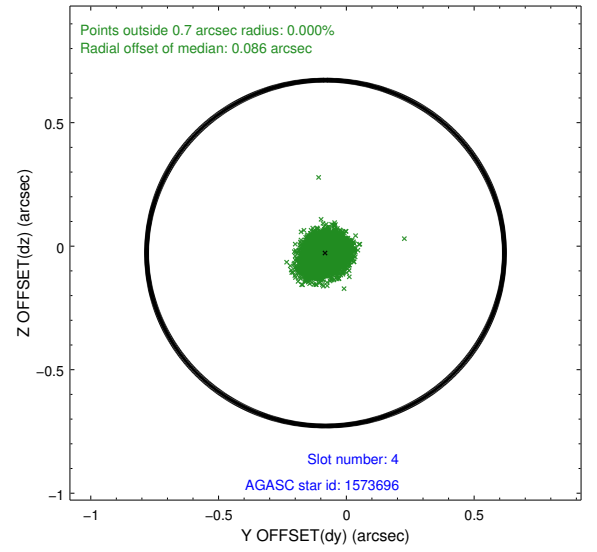
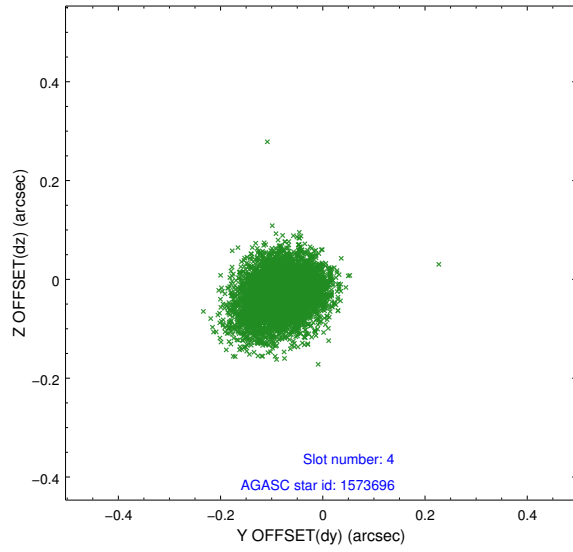
slot	status	id	mag	n_pts	med_dy	med_dz	dr1	dr2	ra	dec	mean_y	mean_z
0	FID	ACIS-S-2	7.09	2620	-0.069	-0.027	0.007	0.011	0.000000	0.000000	-767.61	-1737.73
1	FID	ACIS-S-4	7.19	2620	0.180	0.040	0.006	0.010	0.000000	0.000000	2145.71	170.30
2	FID	ACIS-S-5	7.22	2620	-0.142	-0.005	0.007	0.011	0.000000	0.000000	-1819.89	164.51
3	GUIDE	1573160	9.03	5233	0.079	0.001	0.085	0.136	13.702913	1.100807	-2283.40	-617.83
4	GUIDE	1573696	7.93	5236	-0.082	-0.028	0.063	0.102	13.755831	0.789553	-1162.60	-805.67
5	GUIDE	1573824	9.83	5219	-0.073	-0.058	0.157	0.238	13.318891	0.808017	-1741.46	-2269.64
6	GUIDE	1577736	7.58	5239	0.089	0.021	0.060	0.098	13.888277	0.019580	1612.68	-1264.47
7	GUIDE	1578104	9.76	5215	-0.010	0.062	0.116	0.191	14.285495	1.116252	-1647.85	1381.45

2.4 Star Slots

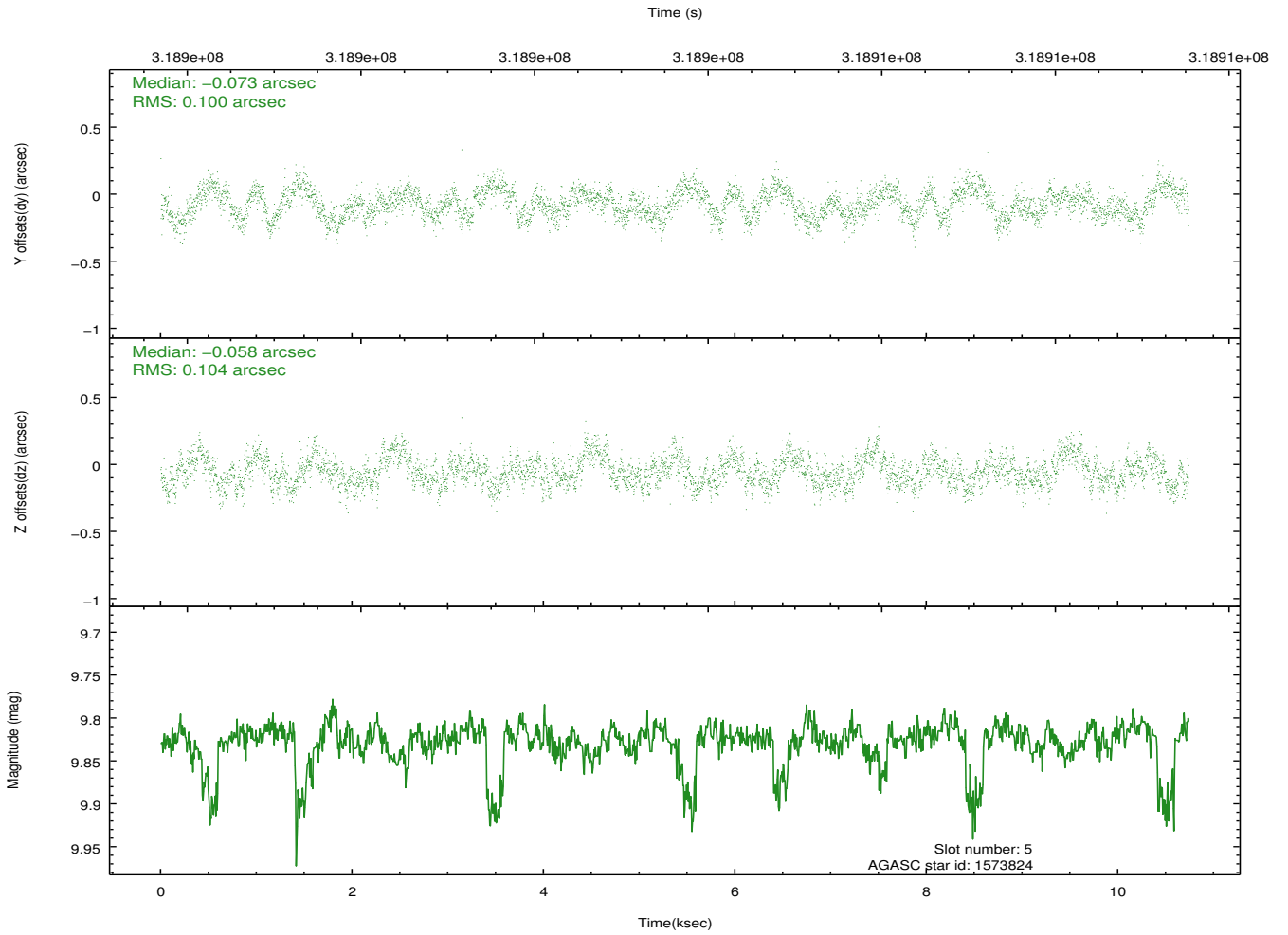
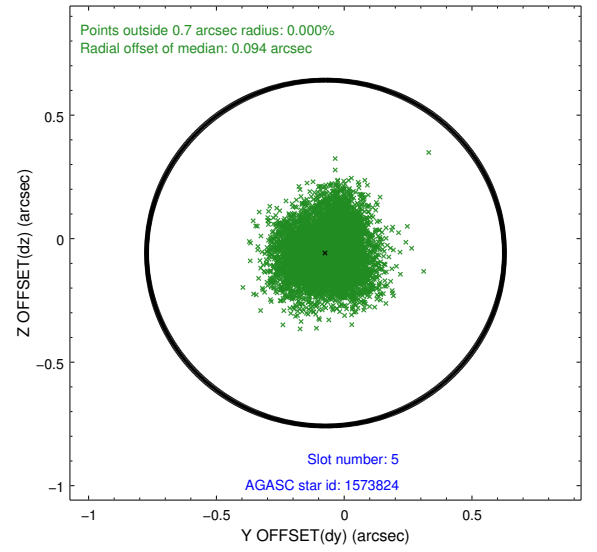
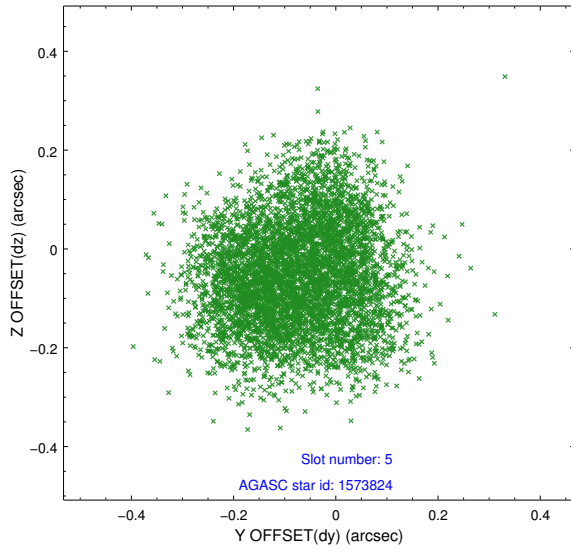
2.4.1 Slot 3



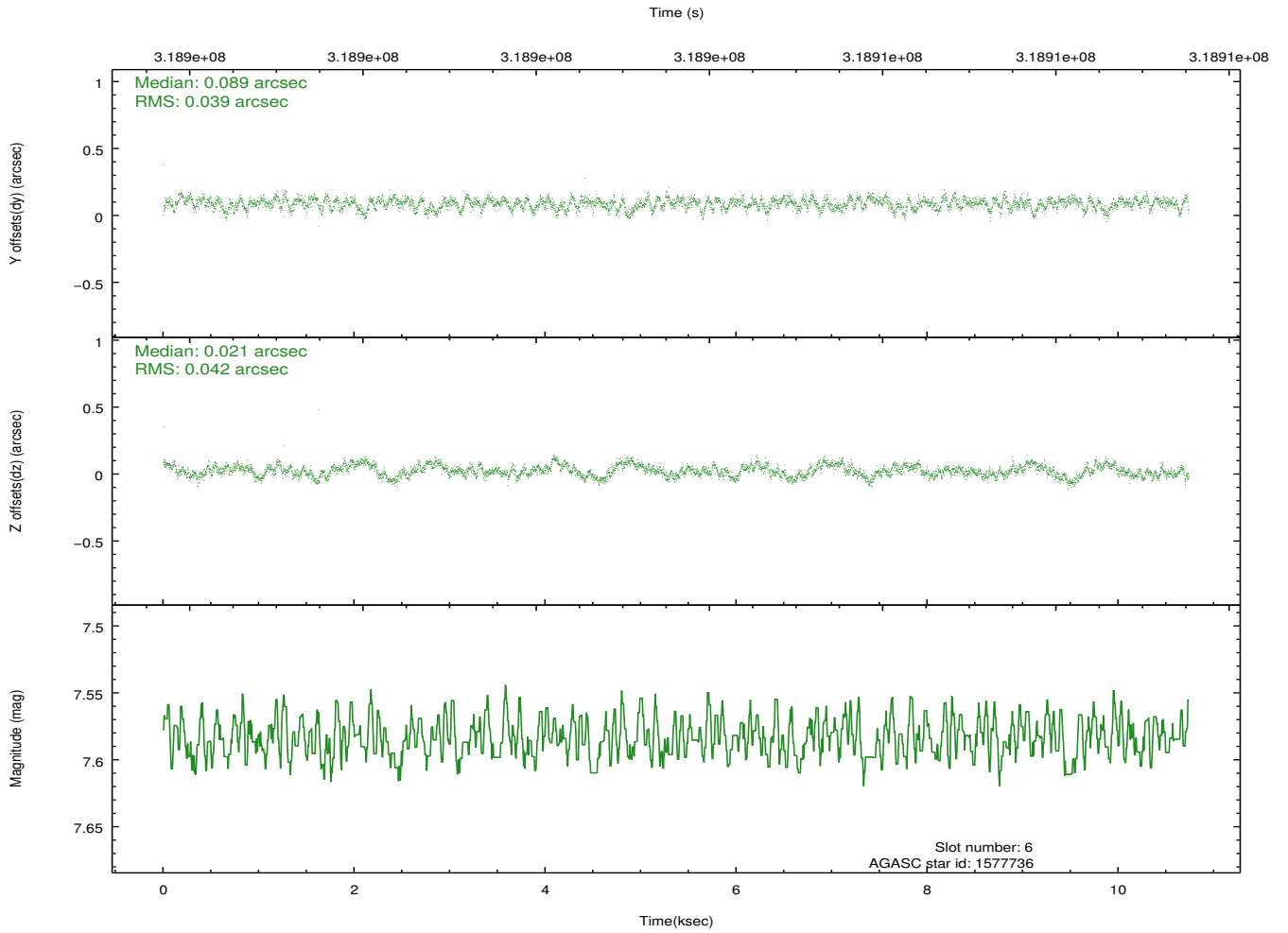
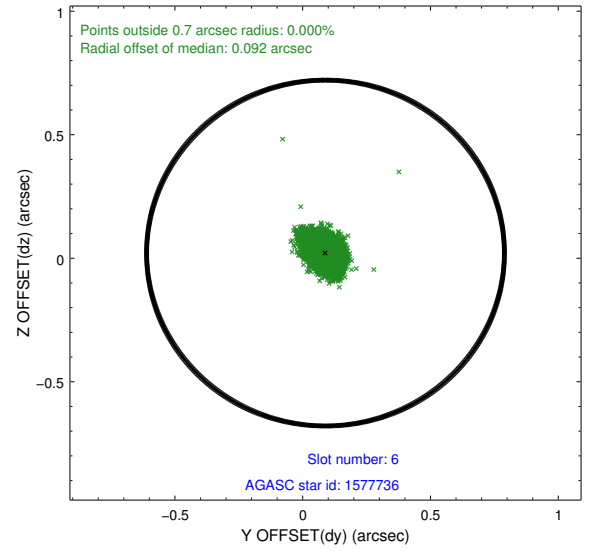
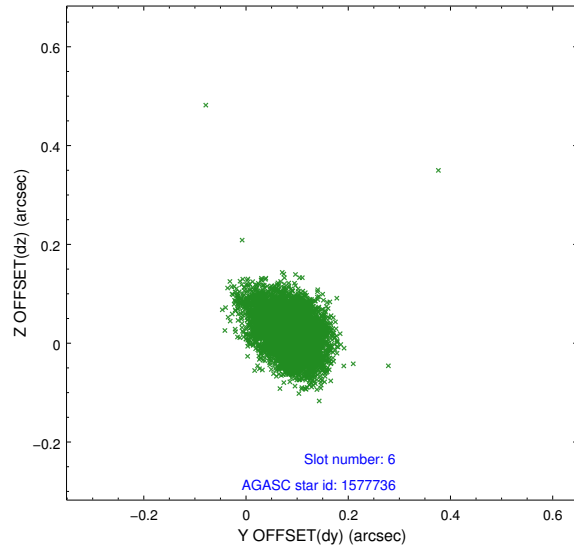
2.4.2 Slot 4



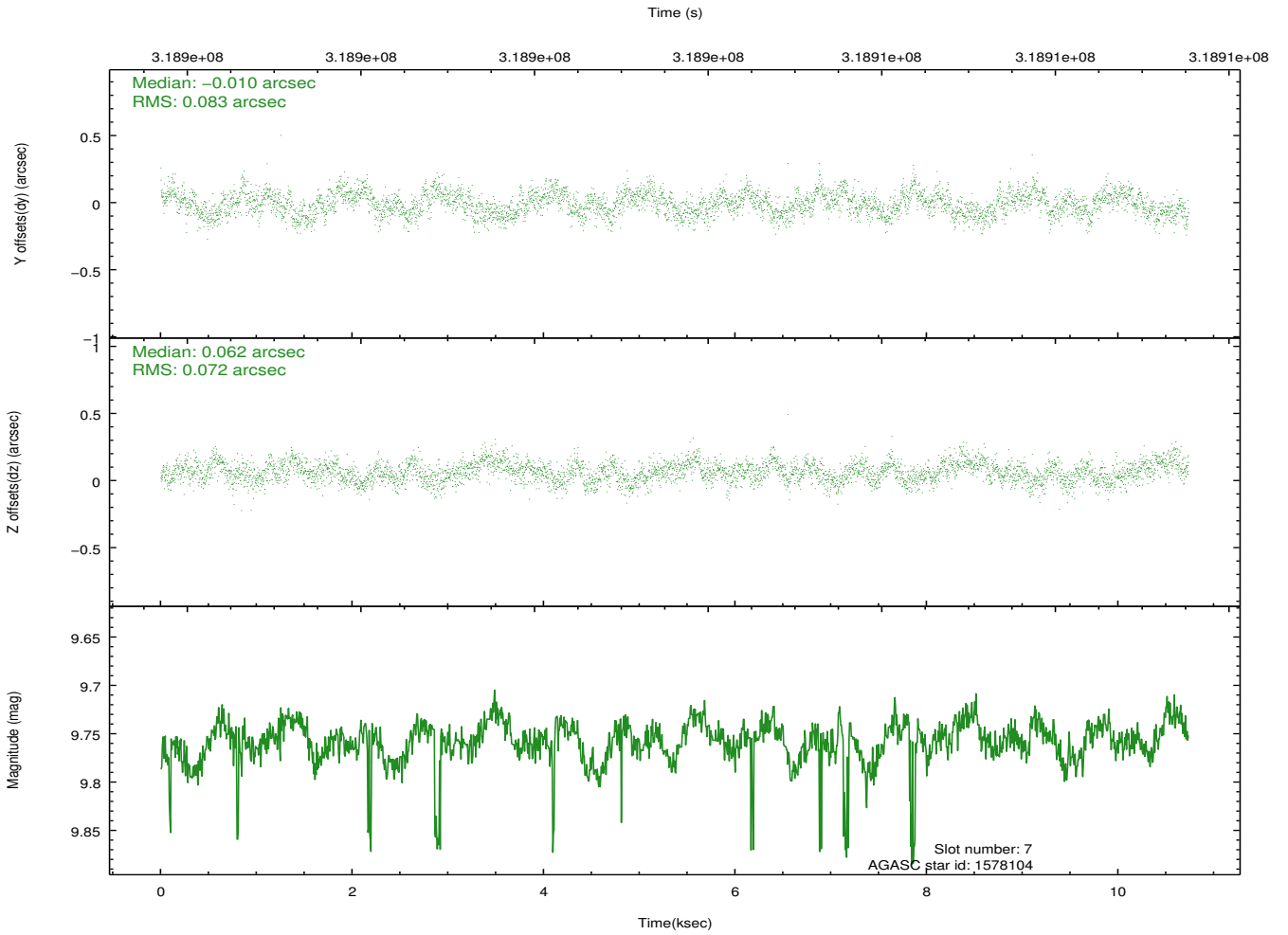
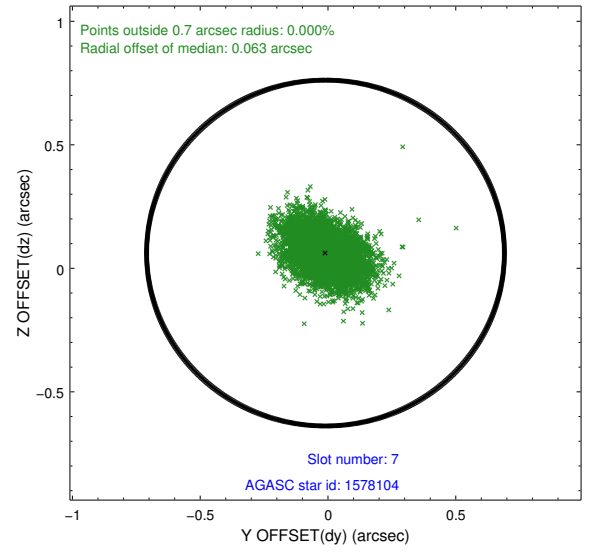
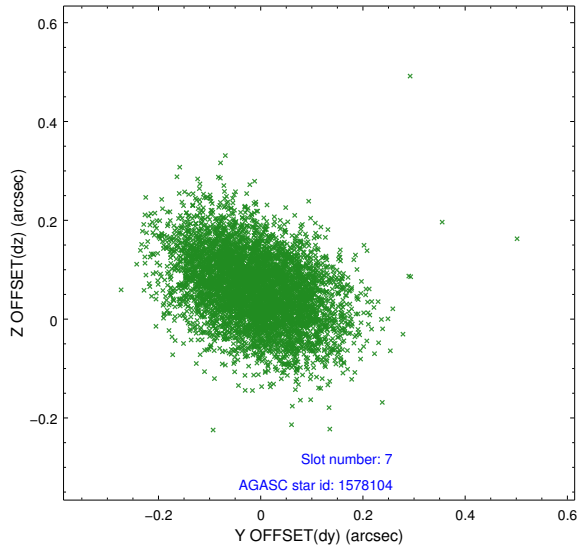
2.4.3 Slot 5



2.4.4 Slot 6

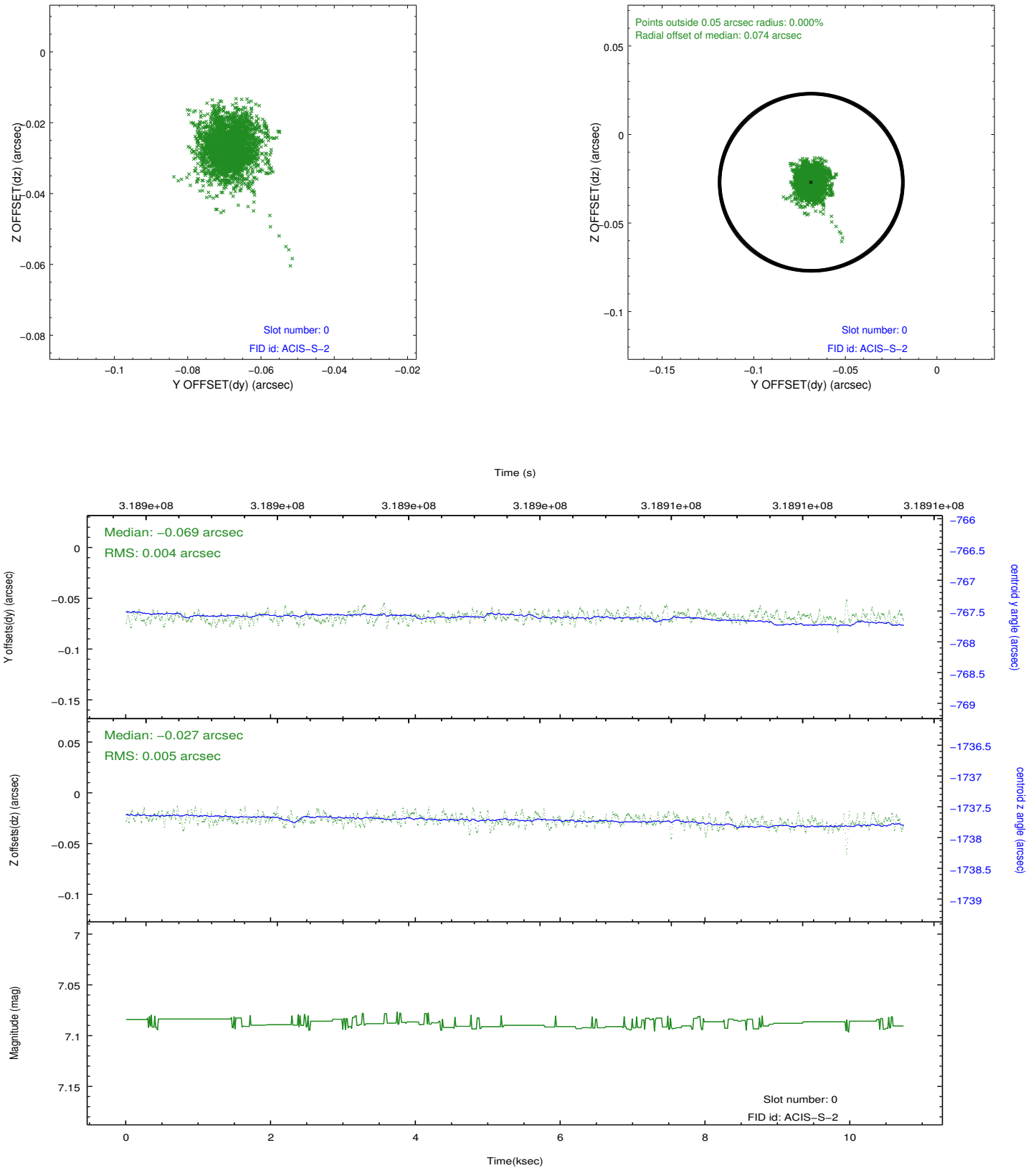


2.4.5 Slot 7

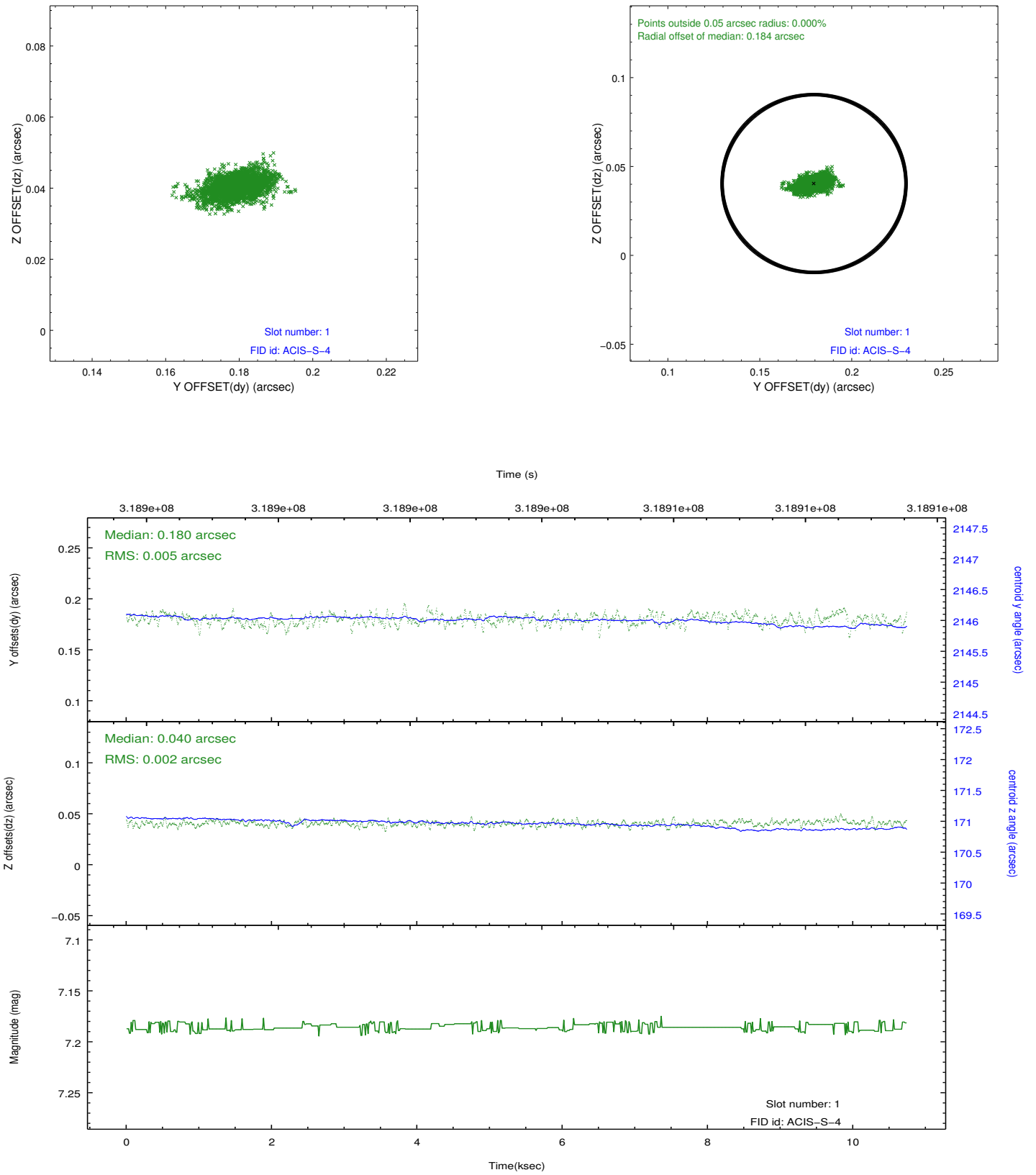


2.5 FID Slots

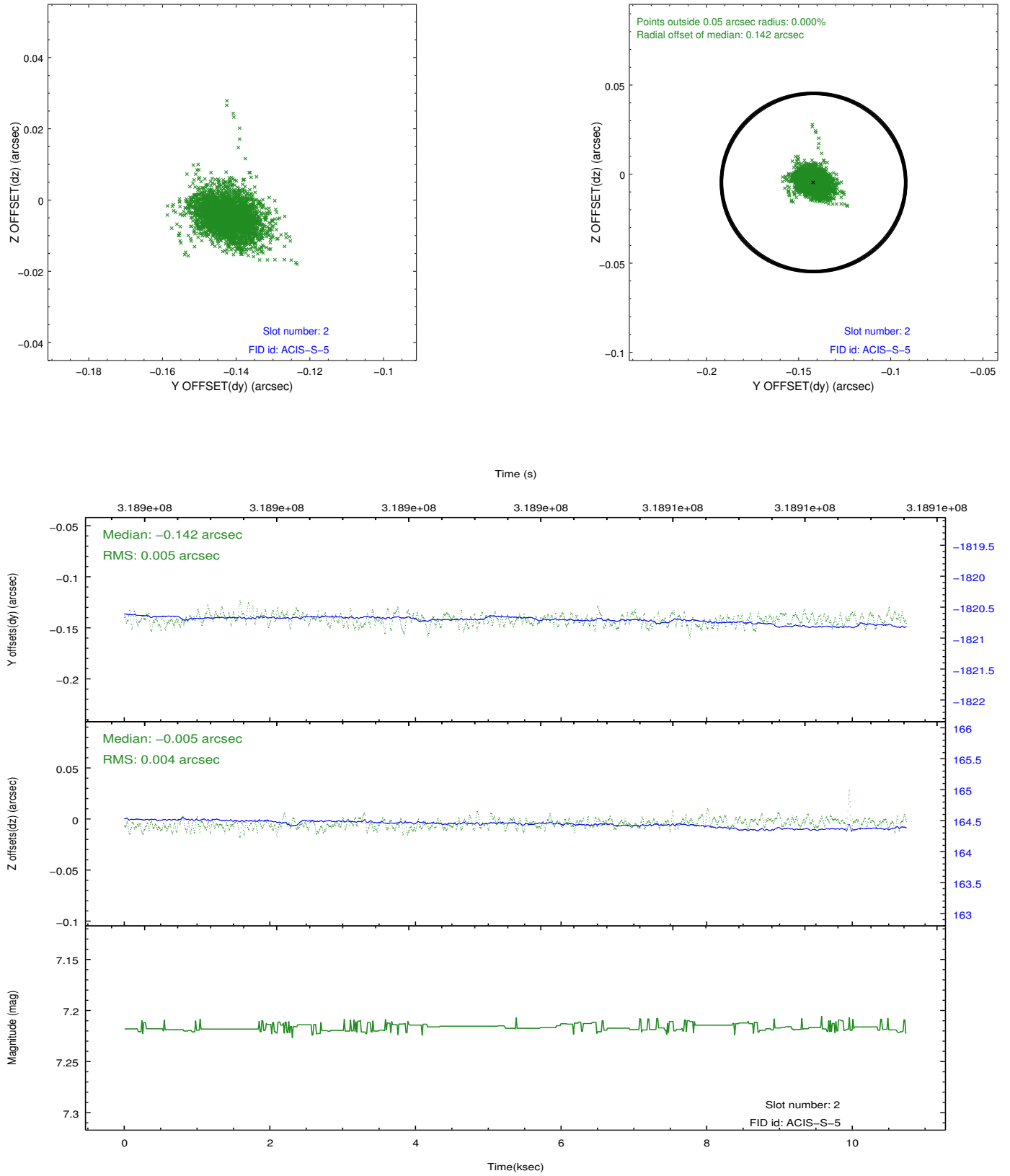
2.5.1 Slot 0



2.5.2 Slot 1



2.5.3 Slot 2



A Summary

A.1 Status

V&V Scientist	Beth Sundheim
V&V Date (YYYY-MM-DD)	2012.05.11
V&V Edition	1
V&V Disposition and Status	OK
V&V Charge Time	10.044

A.2 Comments