

V&V Reference Report

L2 ASCDS Version : 8.4.4

Observation 7741 - L2 Version 2
Chandra X-Ray Center

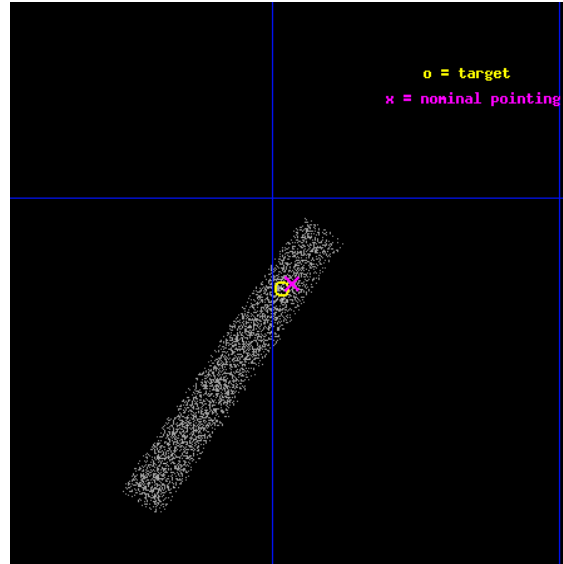
L2 Processing Date : Apr 29 2012

Contents

1	Front	2
2	OBI	3
2.1	OBI	3
2.1.1	Images	3
2.1.2	Bias	3
2.1.3	Parameters	4
2.1.4	Events	4
2.2	Compared Parameters	5
2.3	Aspect	6
2.4	Star Slots	9
2.4.1	Slot 3	9
2.4.2	Slot 4	10
2.4.3	Slot 5	11
2.4.4	Slot 6	12
2.4.5	Slot 7	13
2.5	FID Slots	14
2.5.1	Slot 0	14
2.5.2	Slot 1	15
2.5.3	Slot 2	16
A	Summary	17
A.1	Status	17
A.2	Comments	17

1 Front

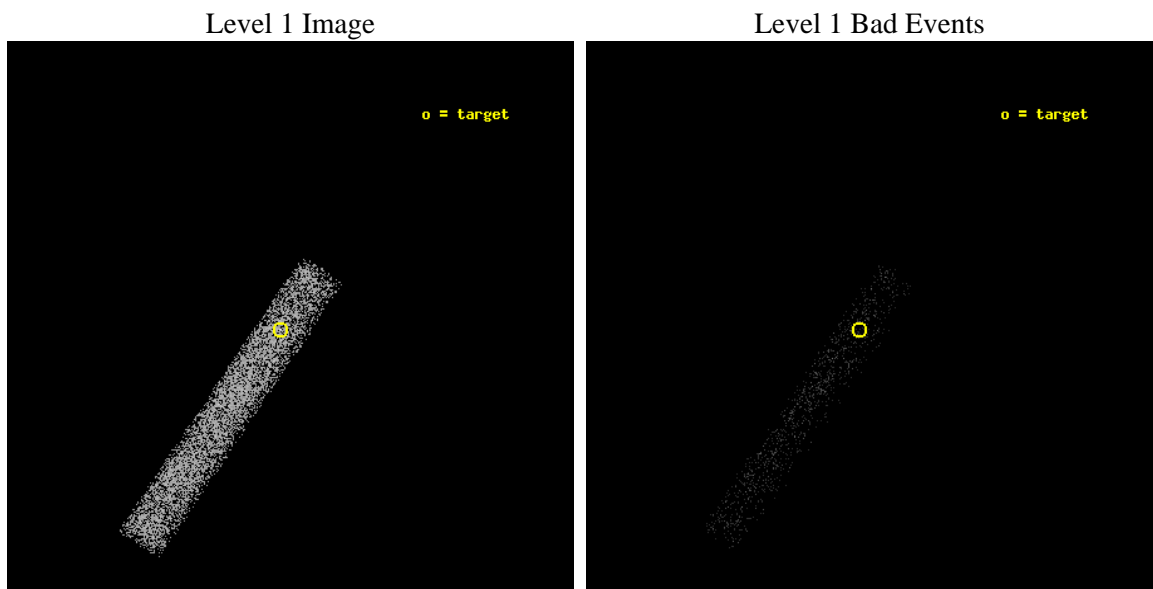
seq_num	701409	Sequence number
obs_id	7741	Observation id
title	X-ray Properties of AGNs with Intermediate-mass Black Holes: Part II	
observer	Dr. Luis Ho	Principal investigator
object	SDSS J232159.06+000738.8	Source name
dtcycle	0	
cycle	P	events from which exps? Prim/Second/Both
ra_targ	350.49625	Observer's specified target RA [deg]
dec_targ	0.127444	Observer's specified target Dec [deg]
ra_nom	350.4918264946	Nominal RA [deg]
dec_nom	0.1295014899948	Nominal Dec [deg]
roll_nom	124.03971408277	Nominal Roll [deg]
revision	2	Processing version of data
ontime	5144.799693346	Sum of GTIs [s]
livetime	4666.0617570706	Livetime [s]
ontime7	5144.799693346	Sum of GTIs [s]
l2events	4192	Number of level 2 events



2 OBI

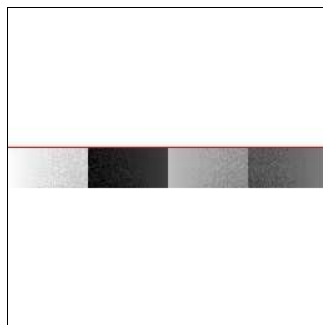
2.1 OBI

2.1.1 Images



2.1.2 Bias

Chip 7



2.1.3 Parameters

obi_num	0	Obi number	sched_exp_time	5000.000000	[s] Scheduled observation exposure time
ascdsver	8.4.4	Processing system revision	ontime	5144.799693346	Sum of GTIs [s]
caldsver	4.4.9	 	ontime7	5144.799693346	Sum of GTIs [s]
date	2012-04-30T01:22:18	Date and time of file creation	l1events	11186	Number of level 1 events
revision	2	Processing version of data			

2.1.4 Events

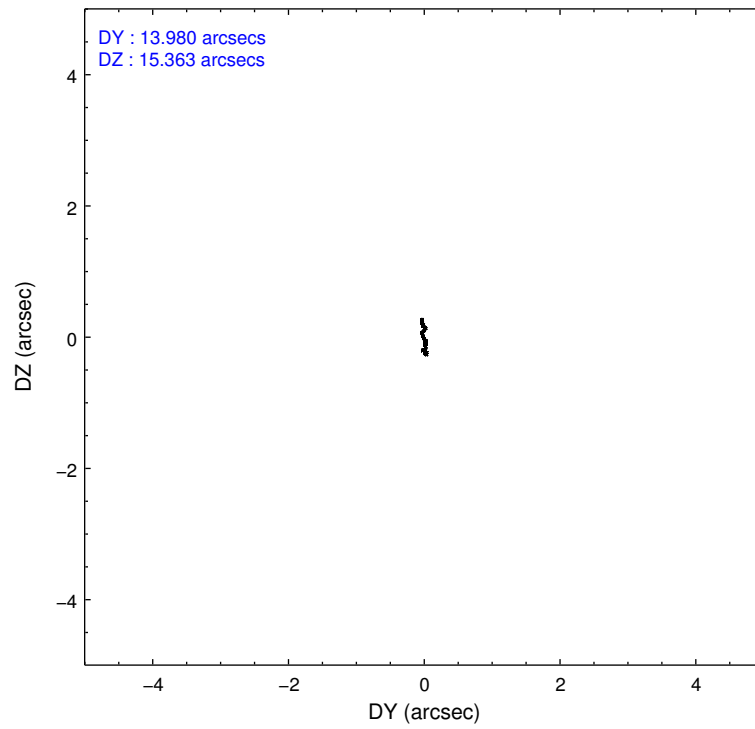
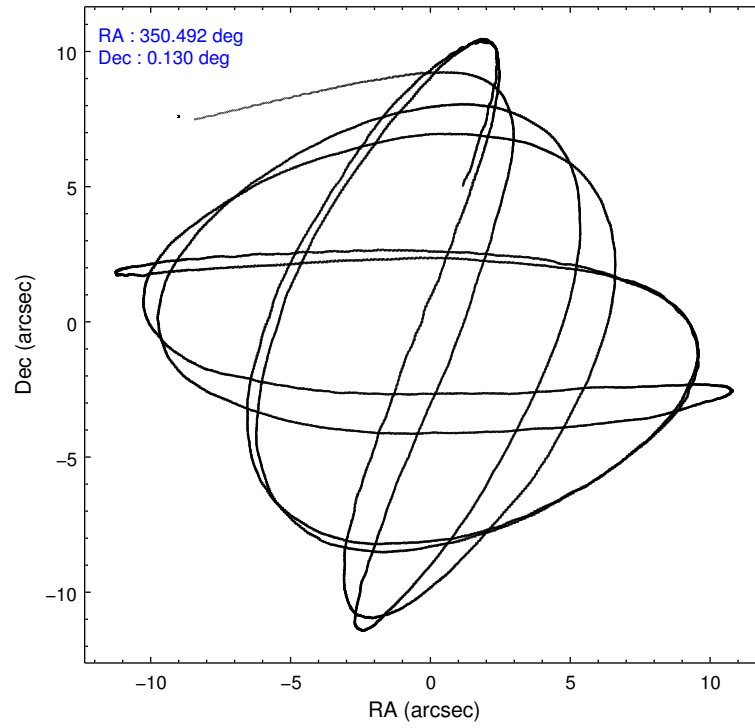
	ccd 7
level 1 events	11186
rejected events	6833
rejected %	61%

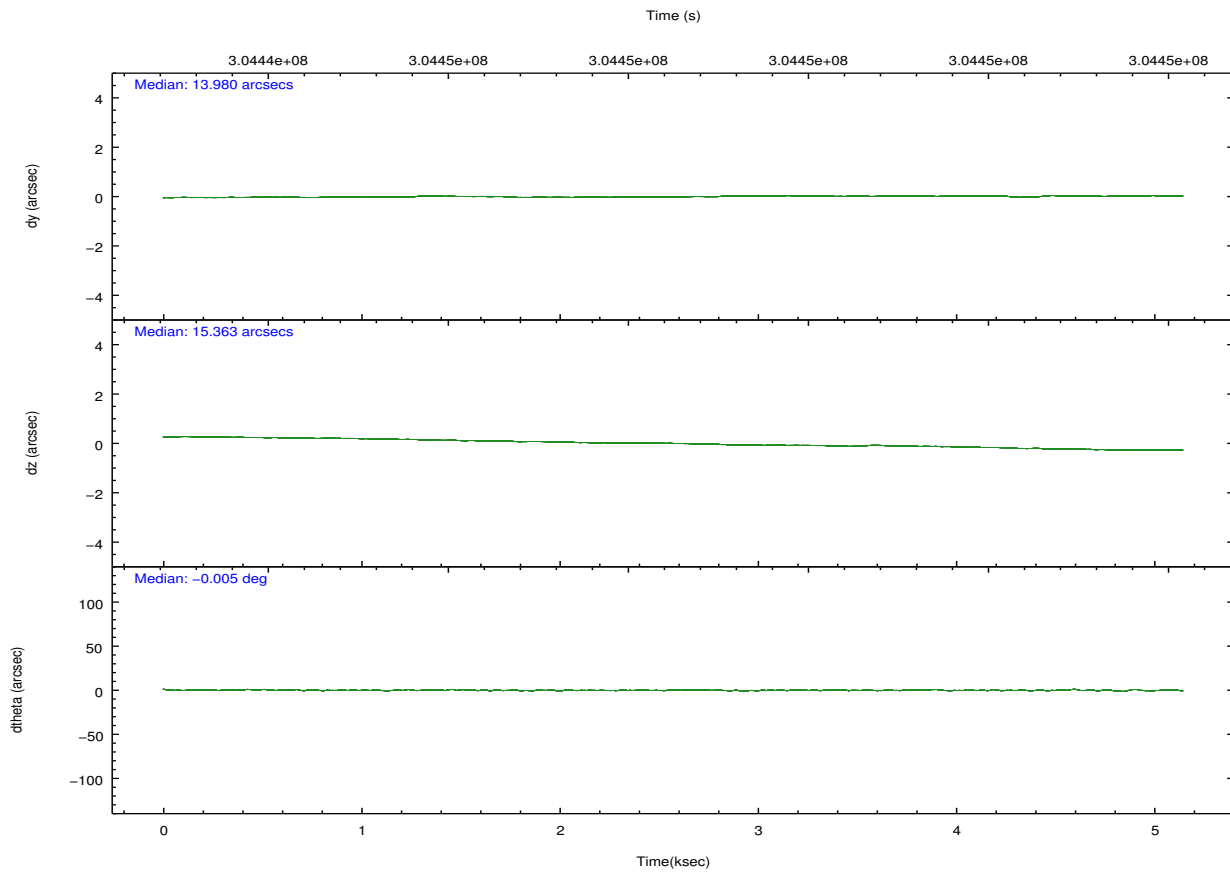
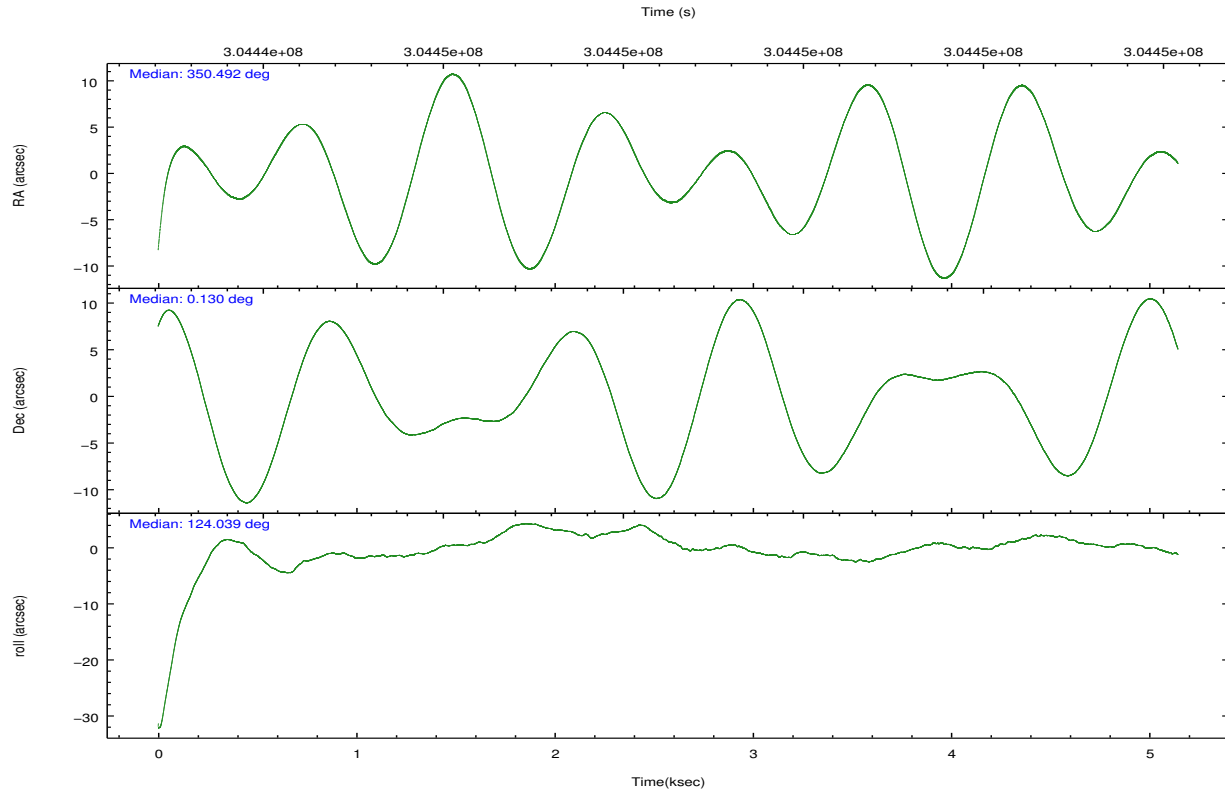
	ccd 7
grade 0 events	544
	4%
grade 1 events	17
	0%
grade 2 events	975
	8%
grade 3 events	654
	5%
grade 4 events	634
	5%
grade 5 events	1030
	9%
grade 6 events	2399
	21%
grade 7 events	4933
	44%

2.2 Compared Parameters

Parameter	Planned	Actual	Parameter	Planned	Actual
Instrument	ACIS	ACIS	Obspar format version number	7	7
Detector	ACIS-7	ACIS-7	Obspar file type	PREDICTED	ACTUAL
Grating	NONE	NONE	Obspar update status	NONE	UPDATED
Data mode	FAINT	FAINT	Number of optional ACIS chips dropped	0	0
Observation mode	POINTING	POINTING	On-chip summing requested	N	N
[deg] Pointing RA	350.516568	350.4918264945994	Subarray requested	CUSTOM	1/8
[deg] Pointing Dec	0.117803	0.1295014899948007	Subarray start row	449	449
[deg] Pointing Roll	123.883063	124.0397140827715	Subarray row count	128	128
[mm] SIM focus pos	-0.684267	-0.6828225247311905	Alternating exposures requested	N	N
[mm] SIM defocus	0	0.001444936568705701	[s] Primary exposure time	0.000000	0.4
[mm] SIM translation stage pos	-190.132523	-190.1425803651734			
[mm] SIM translation stage offset	0	0.01005778216563158			
[s] Observation start time (MET)	304444815.184000	304443701.26794			
Observation start date	2007-08-25T15:59:10	2007-08-25T15:41:41			
[s] Observation end time (MET)	304449815.184000	304451120.21829			
Observation end date	2007-08-25T17:22:30	2007-08-25T17:45:20			
Read mode	TIMED	TIMED			

2.3 Aspect



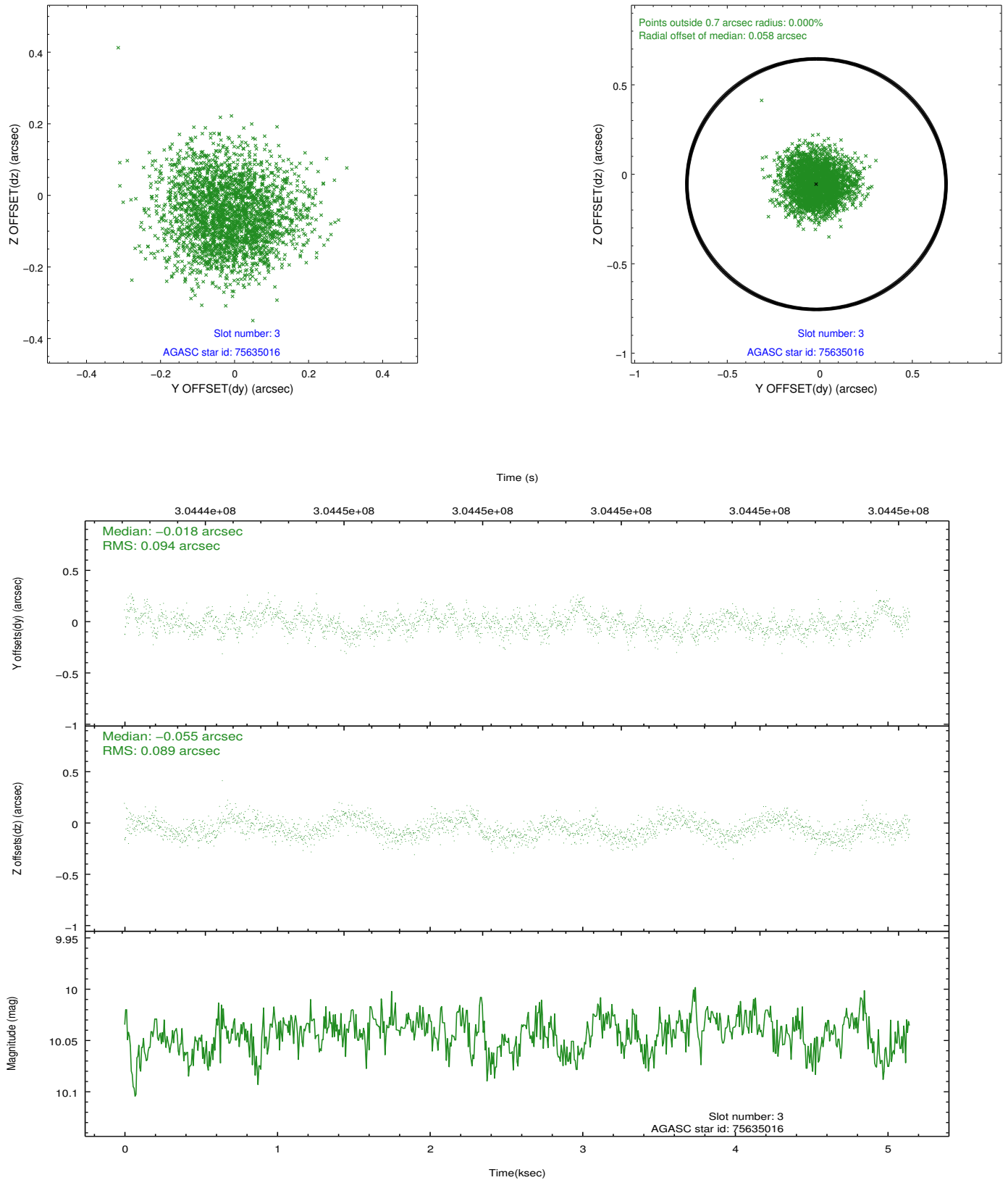


Slot Statistics

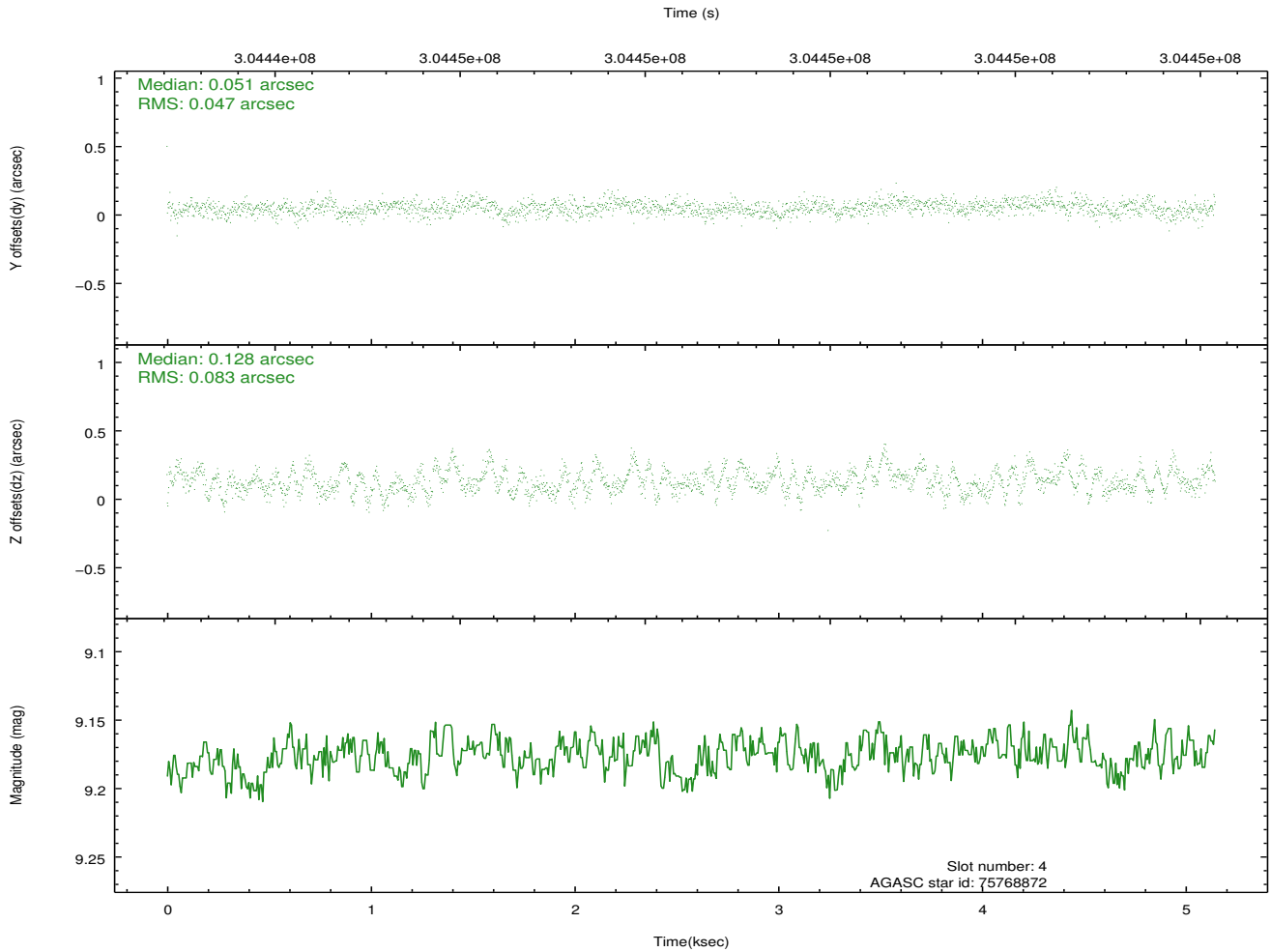
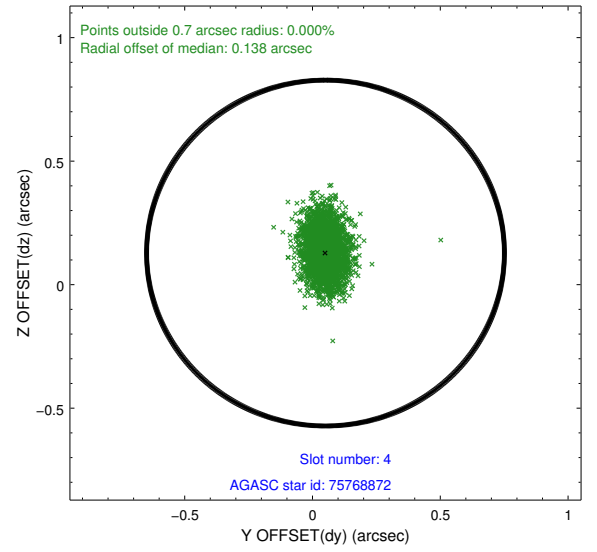
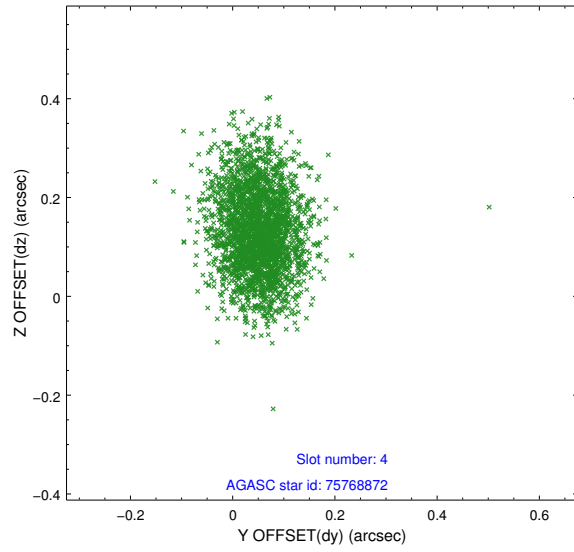
slot	status	id	mag	n_pts	med_dy	med_dz	dr1	dr2	ra	dec	mean_y	mean_z
0	FID	ACIS-S-2	7.09	1255	-0.071	-0.029	0.009	0.015	0.000000	0.000000	-766.97	-1736.74
1	FID	ACIS-S-4	7.19	1255	0.206	0.042	0.011	0.020	0.000000	0.000000	2146.02	170.62
2	FID	ACIS-S-5	7.22	1254	-0.166	-0.005	0.011	0.018	0.000000	0.000000	-1818.42	165.55
3	GUIDE	75635016	10.04	2505	-0.018	-0.055	0.138	0.222	349.810263	0.282170	1908.92	1781.17
4	GUIDE	75768872	9.18	2508	0.051	0.128	0.099	0.169	350.987165	0.298741	-403.14	-1768.49
5	GUIDE	75769624	9.38	2507	-0.140	-0.144	0.101	0.158	350.180830	0.159527	798.32	919.11
6	GUIDE	75769728	9.56	2507	0.059	0.091	0.111	0.180	350.804562	0.151153	-477.85	-926.80
7	GUIDE	687350360	8.47	2509	0.044	-0.025	0.064	0.102	350.599090	-0.414872	-1760.15	822.07

2.4 Star Slots

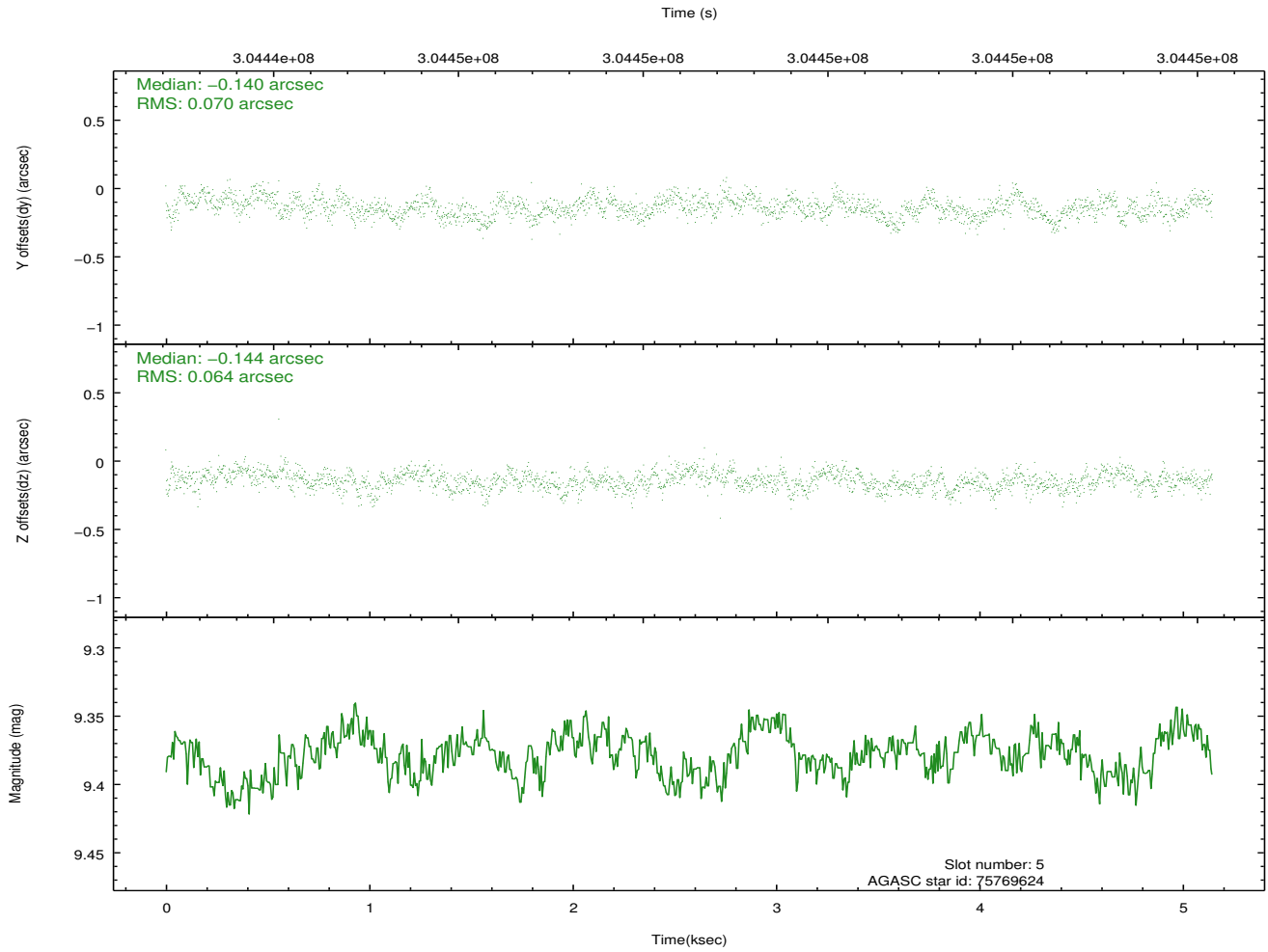
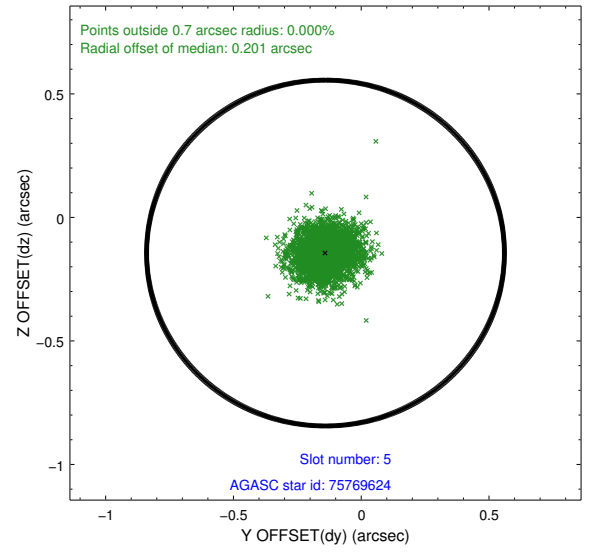
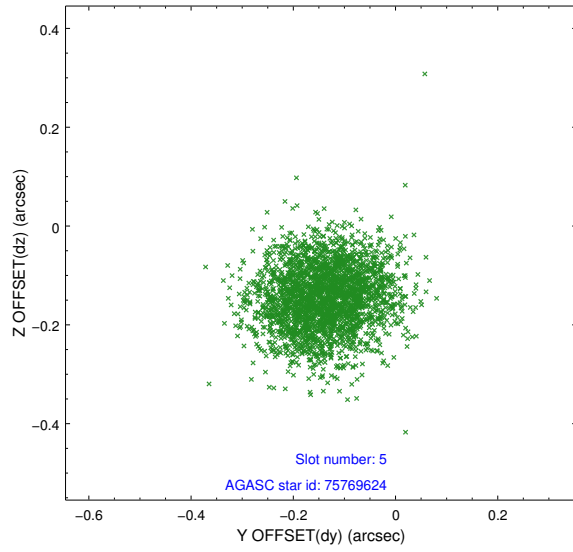
2.4.1 Slot 3



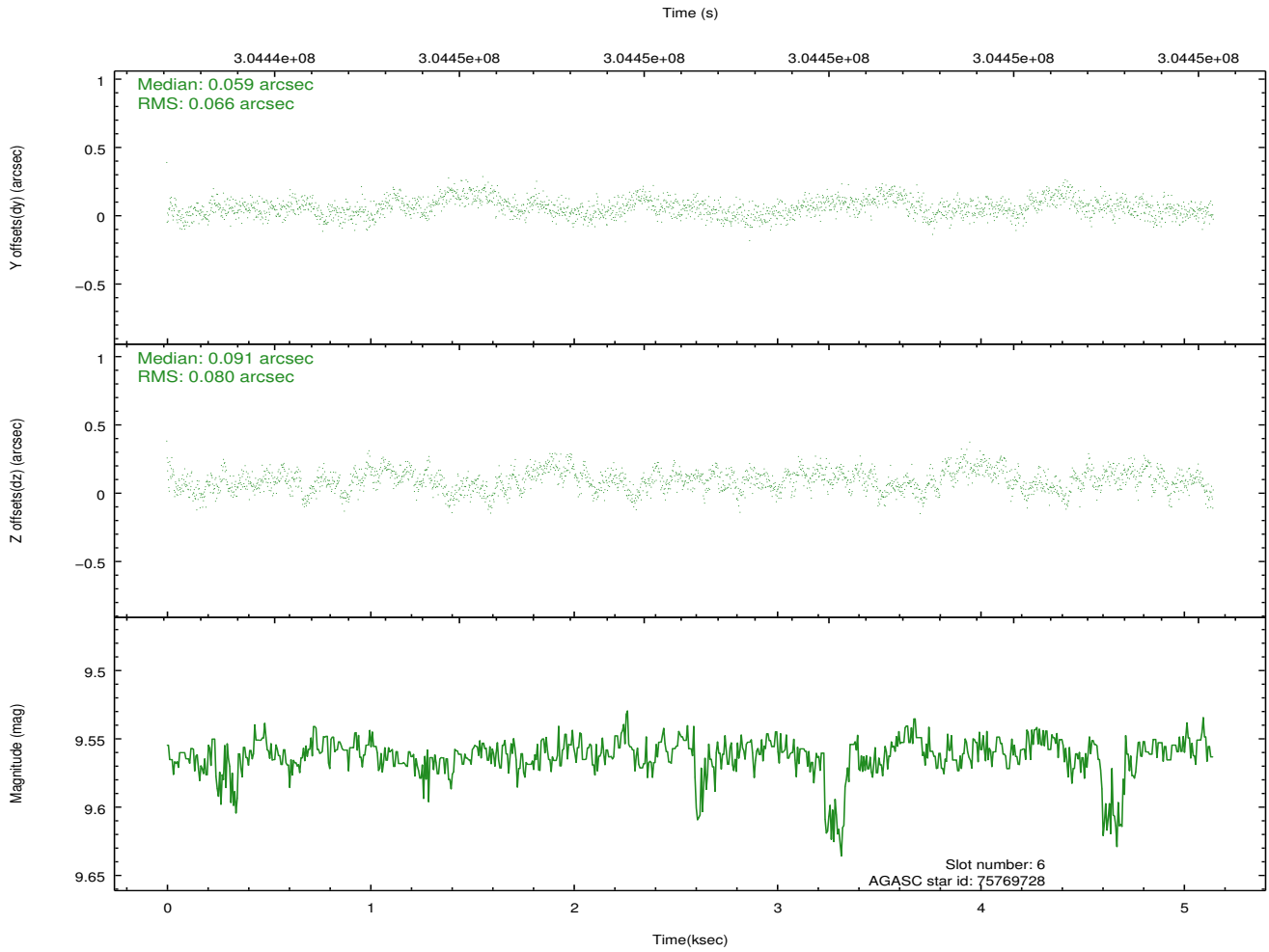
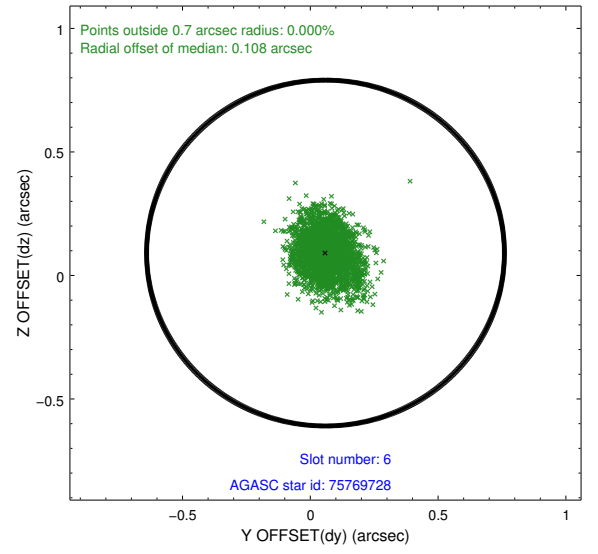
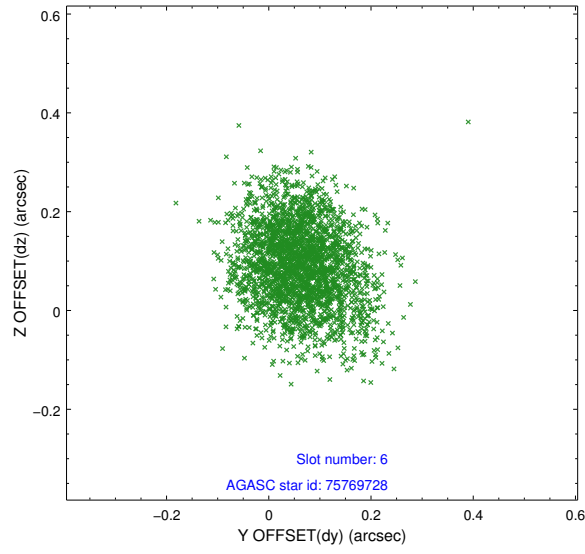
2.4.2 Slot 4



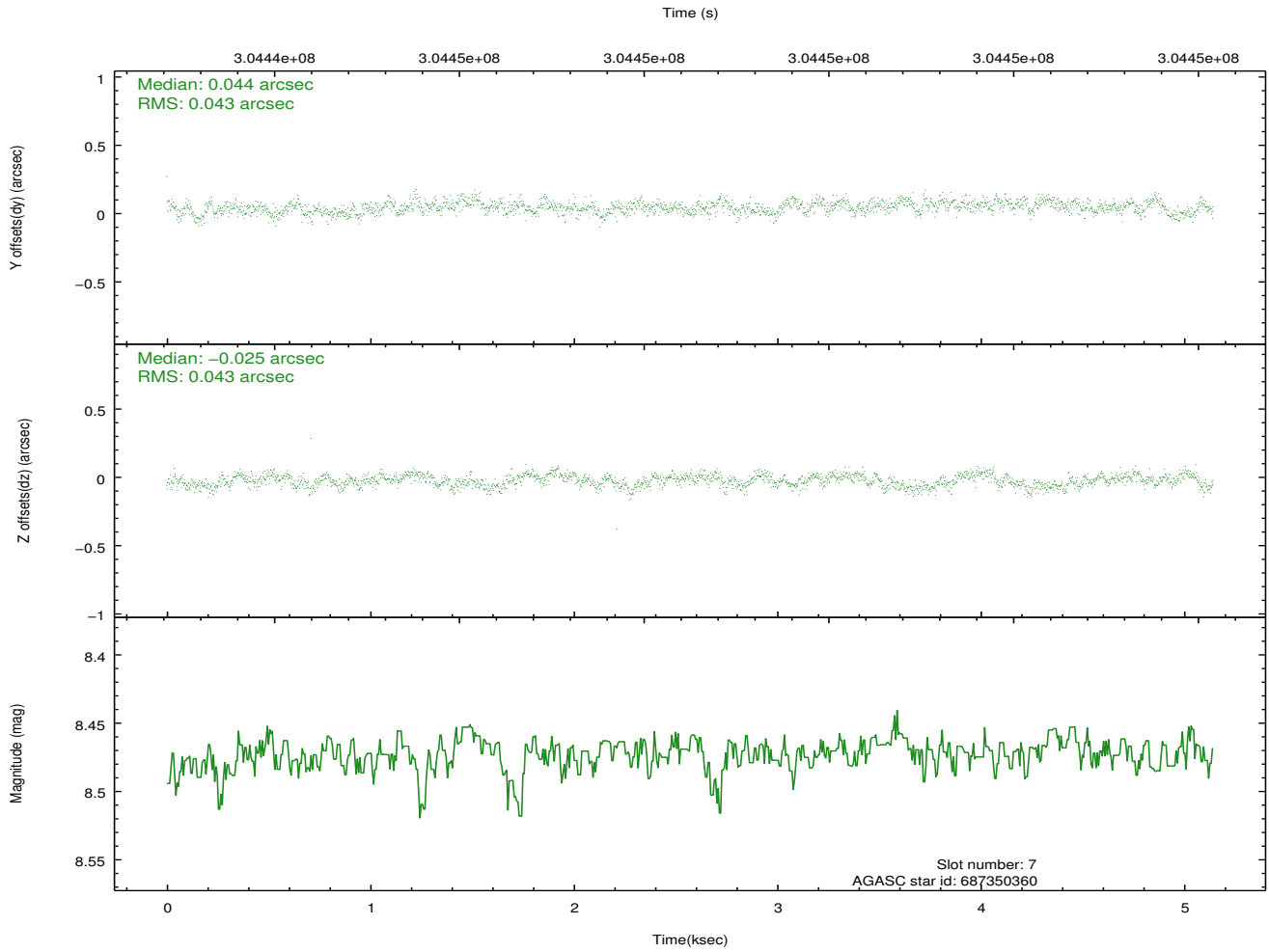
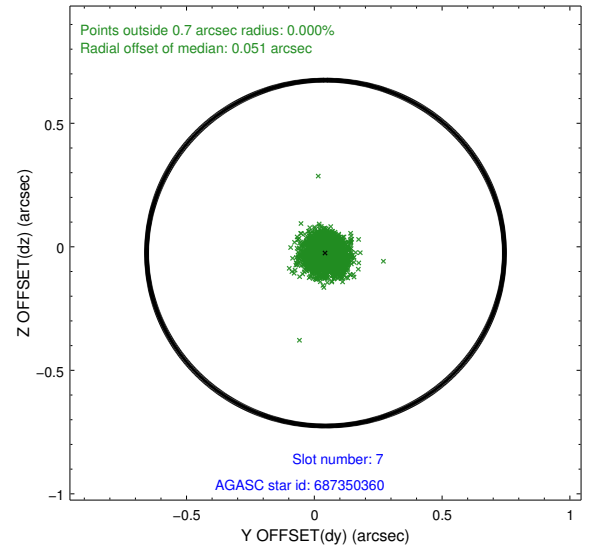
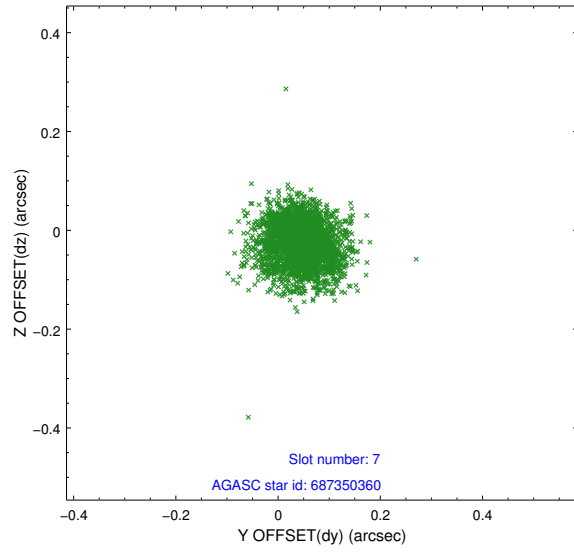
2.4.3 Slot 5



2.4.4 Slot 6

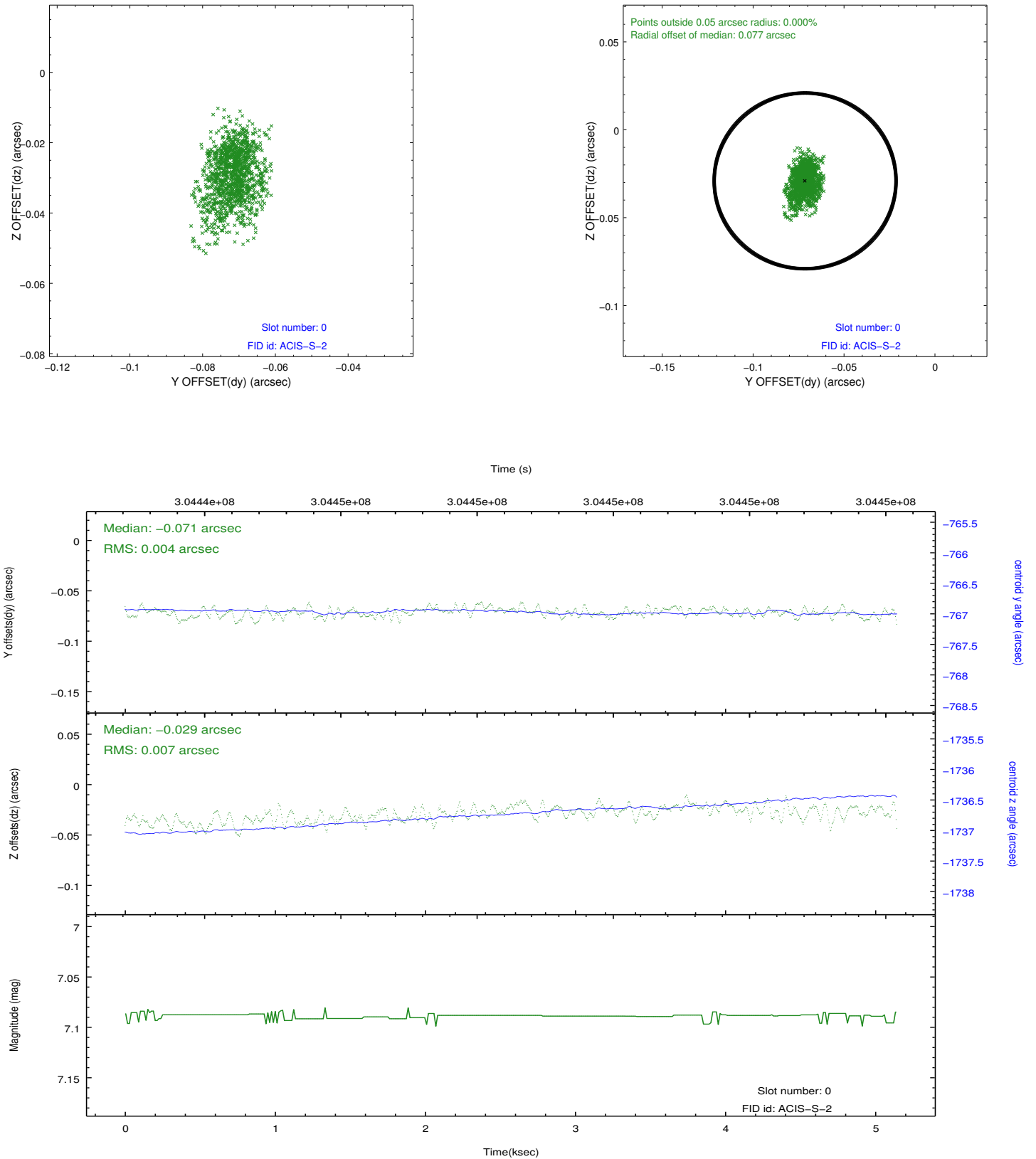


2.4.5 Slot 7

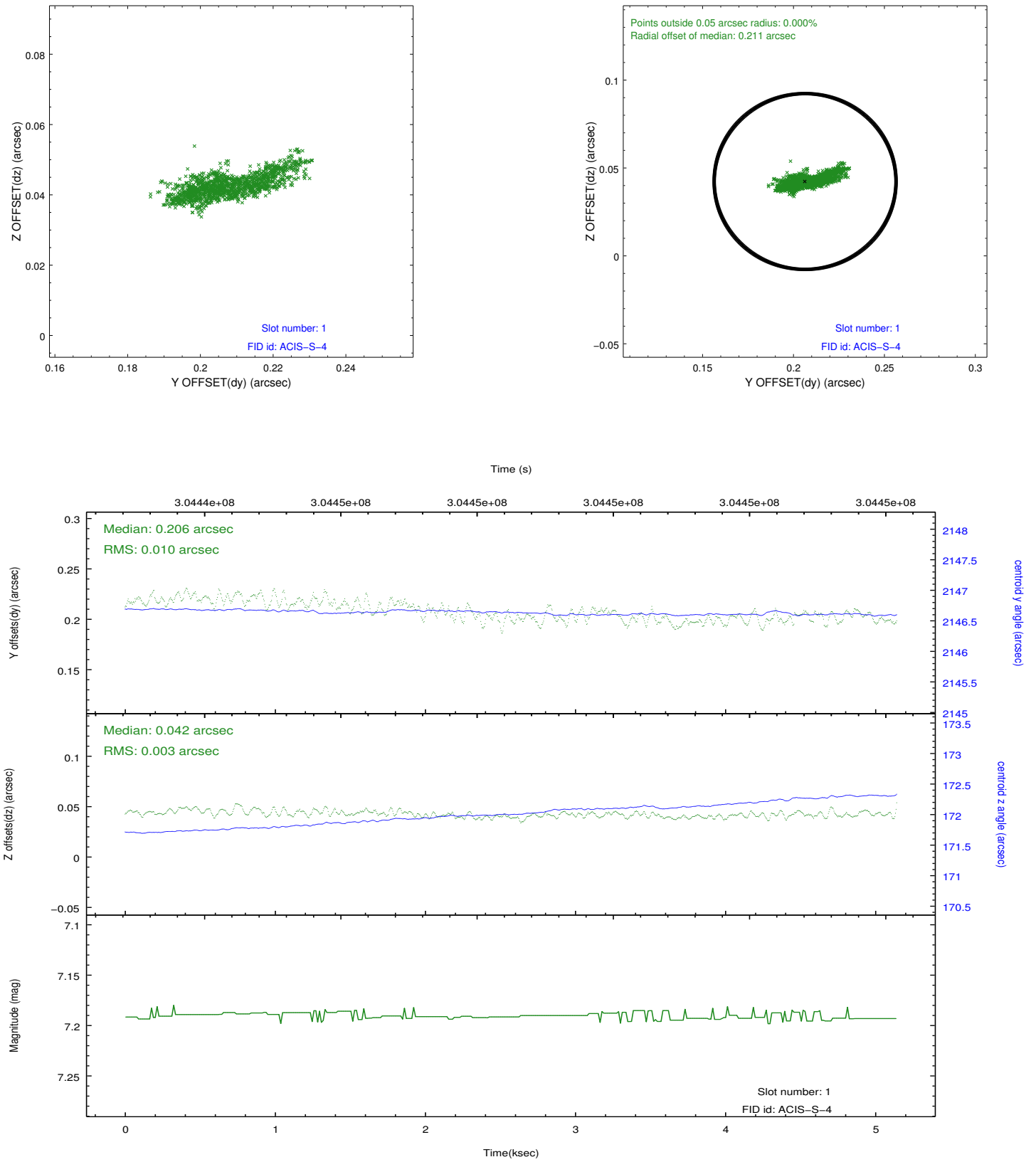


2.5 FID Slots

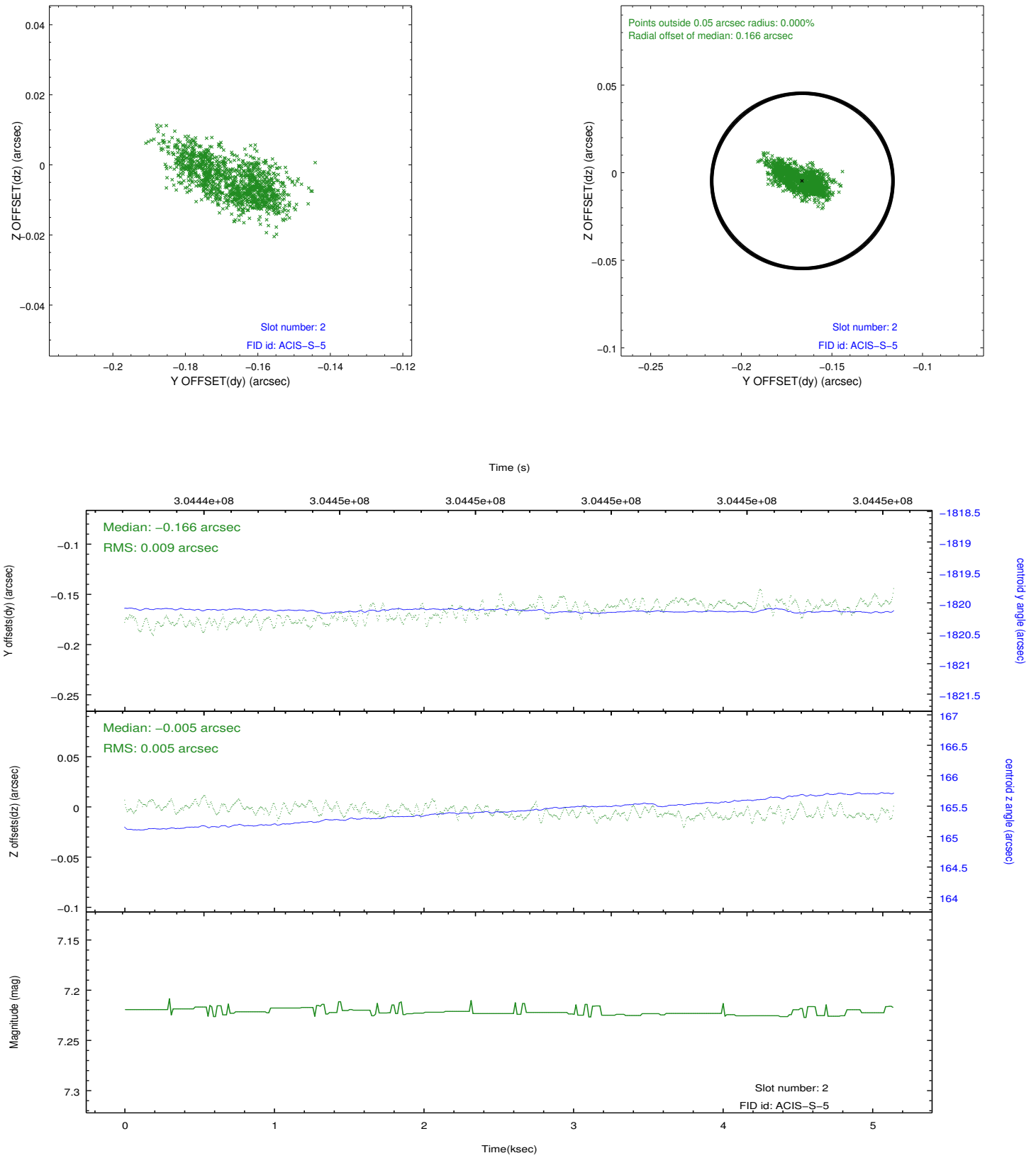
2.5.1 Slot 0



2.5.2 Slot 1



2.5.3 Slot 2



A Summary

A.1 Status

V&V Scientist	Beth Sundheim
V&V Date (YYYY-MM-DD)	2012.05.02
V&V Edition	1
V&V Disposition and Status	OK
V&V Charge Time	5.14479969

A.2 Comments