

# V&V Reference Report

## L2 ASCDS Version : 8.4.4

Observation 7359 - L2 Version 2  
Chandra X-Ray Center

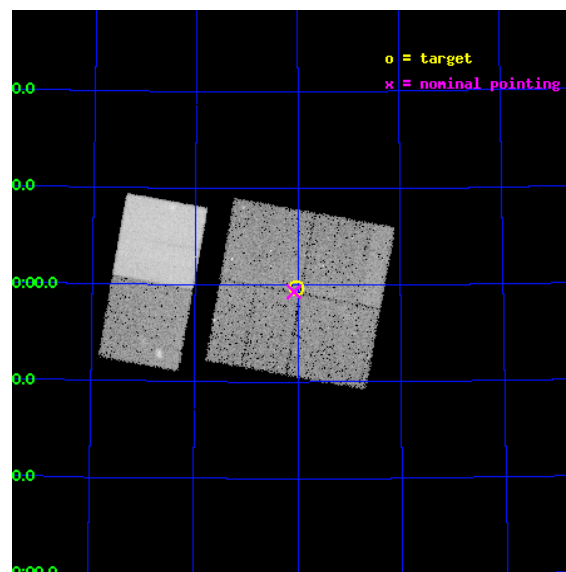
L2 Processing Date : May 1 2012

## Contents

<b>1</b>	<b>Front</b>	<b>2</b>
<b>2</b>	<b>OBI</b>	<b>3</b>
2.1	OBI . . . . .	3
2.1.1	Images . . . . .	3
2.1.2	Bias . . . . .	3
2.1.3	Parameters . . . . .	4
2.1.4	Events . . . . .	4
2.2	Compared Parameters . . . . .	5
2.3	Aspect . . . . .	6
2.4	Star Slots . . . . .	9
2.4.1	Slot 3 . . . . .	9
2.4.2	Slot 4 . . . . .	10
2.4.3	Slot 5 . . . . .	11
2.4.4	Slot 6 . . . . .	12
2.4.5	Slot 7 . . . . .	13
2.5	FID Slots . . . . .	14
2.5.1	Slot 0 . . . . .	14
2.5.2	Slot 1 . . . . .	15
2.5.3	Slot 2 . . . . .	16
<b>A</b>	<b>Summary</b>	<b>17</b>
A.1	Status . . . . .	17
A.2	Comments . . . . .	17

# 1 Front

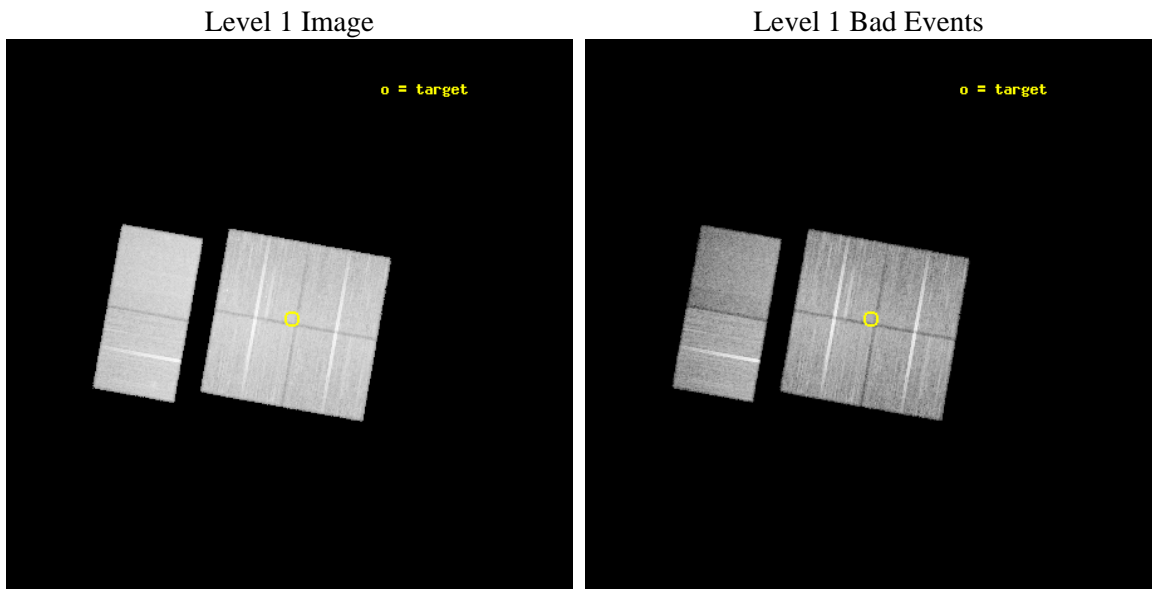
seq_num	701345	Sequence number
obs_id	7359	Observation id
title	70 Micron MIPS and Chandra ACIS-I Imaging of the IRAC Dark Field: Infrared AGN	Proposal title
observer	Dr. Jason Surace	Principal investigator
object	IRAC Dark Field	Source name
dtcycle	0	&#160
cycle	P	events from which exps? Prim/Second/Both
ra_targ	265.008333	Observer's specified target RA [deg]
dec_targ	68.995833	Observer's specified target Dec [deg]
ra_nom	265.0187642435	Nominal RA [deg]
dec_nom	68.988668379707	Nominal Dec [deg]
roll_nom	280.19897318452	Nominal Roll [deg]
revision	2	Processing version of data
ontime	22857.558924615	Sum of GTIs [s]
livetime	22568.122750342	Livetime [s]
ontime0	22860.799914896	Sum of GTIs [s]
ontime1	22857.558944643	Sum of GTIs [s]
ontime2	22860.799914896	Sum of GTIs [s]
ontime3	22857.558924615	Sum of GTIs [s]
ontime6	22860.799914896	Sum of GTIs [s]
ontime7	22860.799914896	Sum of GTIs [s]
l2events	168226	Number of level 2 events



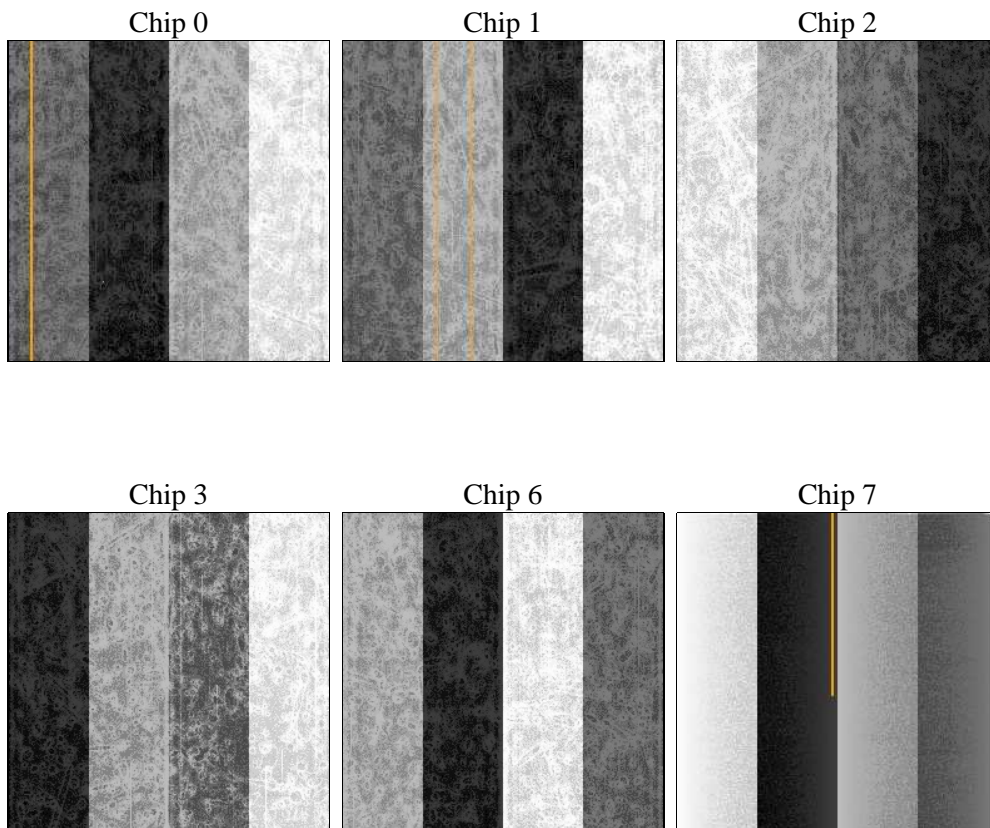
## 2 OBI

### 2.1 OBI

#### 2.1.1 Images



#### 2.1.2 Bias



### 2.1.3 Parameters

obi_num	1	Obi number	sched_exp_time	22700.000000	[s] Scheduled observation exposure time
ascdsver	8.4.4	Processing system revision	ontime	22857.558924615	Sum of GTIs [s]
caldsver	4.4.9	&#160	ontime0	22860.799914896	Sum of GTIs [s]
date	2012-05-01T22:34:10	Date and time of file creation	ontime1	22857.558944643	Sum of GTIs [s]
revision	2	Processing version of data	ontime2	22860.799914896	Sum of GTIs [s]
			ontime3	22857.558924615	Sum of GTIs [s]
			ontime6	22860.799914896	Sum of GTIs [s]
			ontime7	22860.799914896	Sum of GTIs [s]
			l1events	1184568	Number of level 1 events

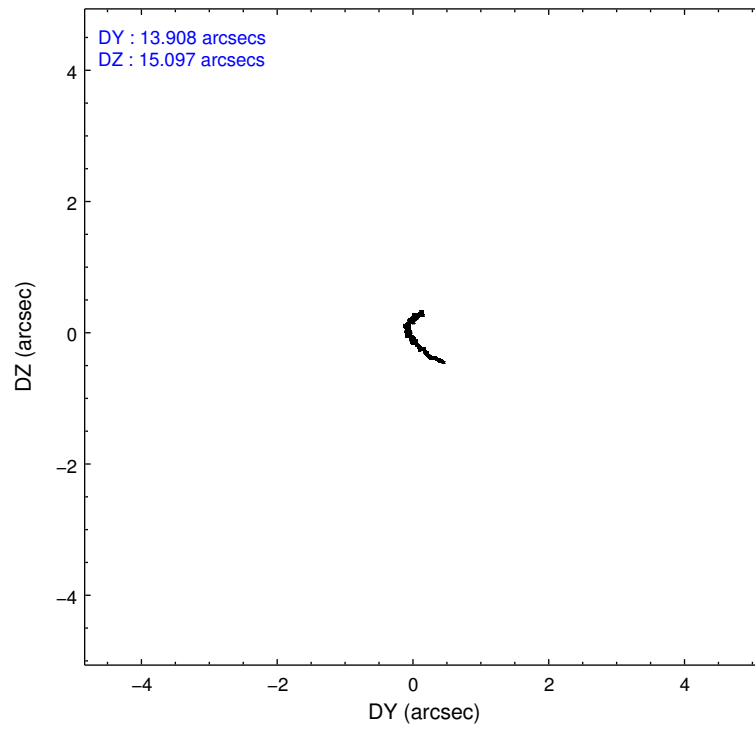
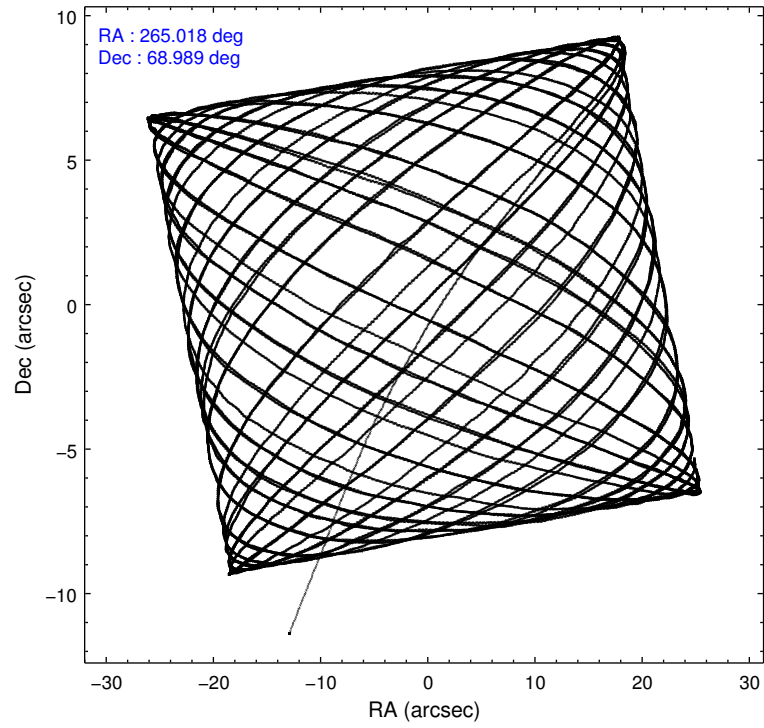
### 2.1.4 Events

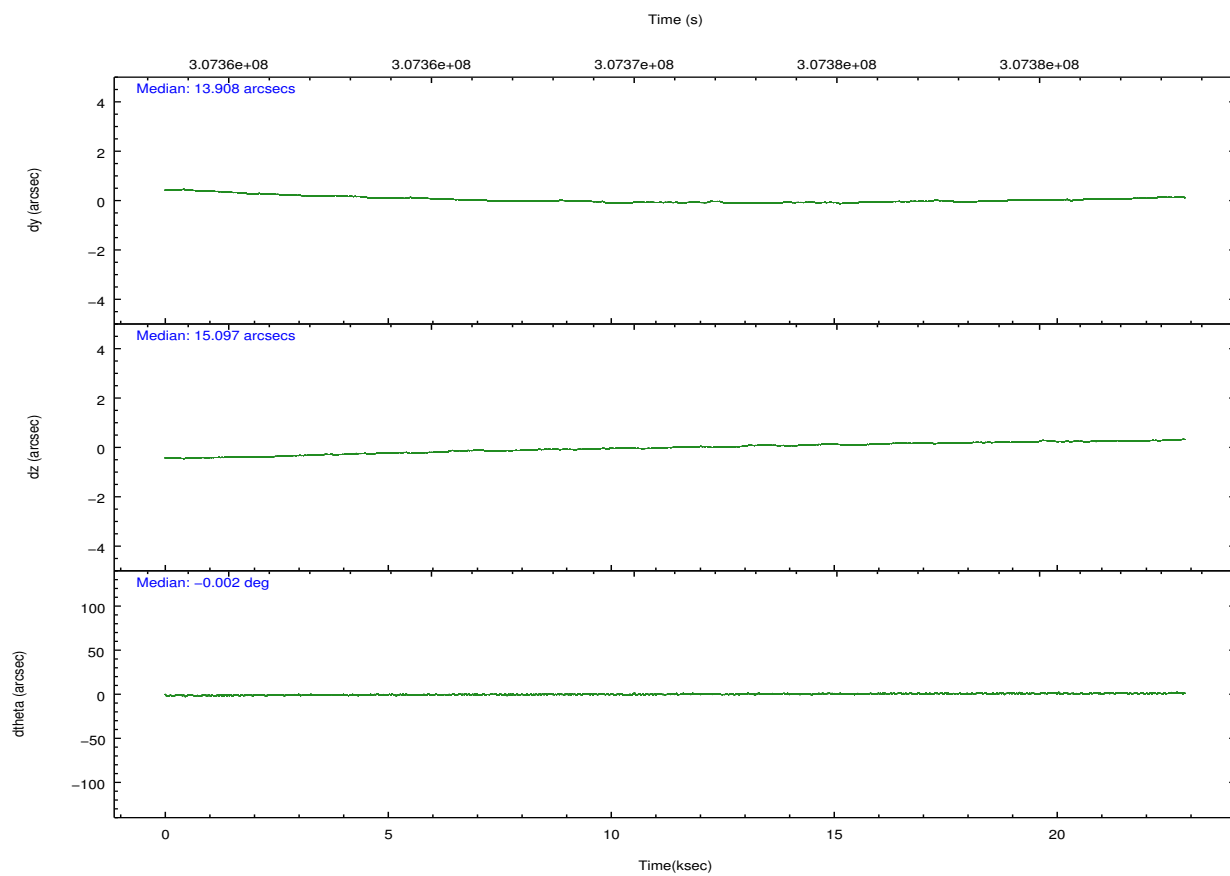
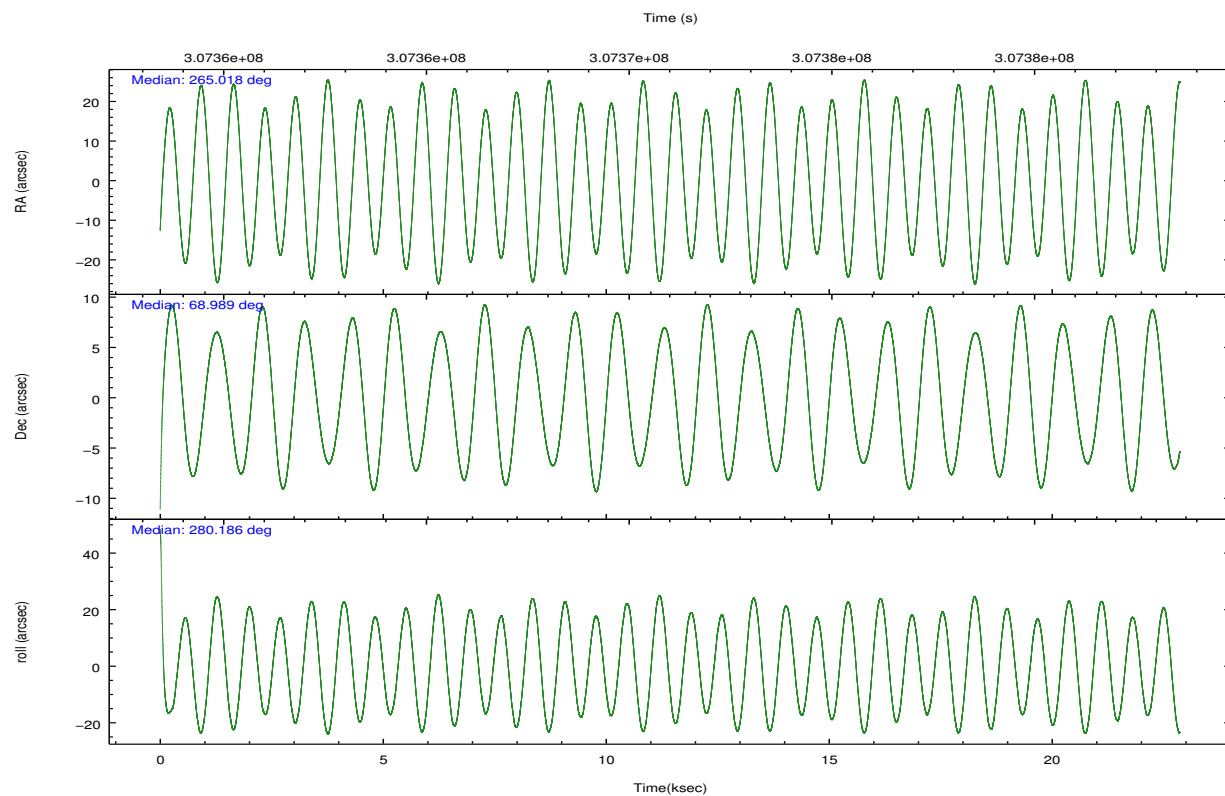
	ccd 0	ccd 1	ccd 2	ccd 3	ccd 6	ccd 7		ccd 0	ccd 1	ccd 2	ccd 3	ccd 6	ccd 7
level 1 events	181673	177754	208041	196568	202703	217829	grade 0 events	6668	7962	6879	6772	7532	9573
rejected events	163737	157473	190154	179147	183062	124168		3%	4%	3%	3%	3%	4%
rejected %	90%	88%	91%	91%	90%	57%	grade 1 events	90	79	109	126	102	257
								0%	0%	0%	0%	0%	0%
							grade 2 events	4659	4755	4644	4071	4654	20374
								2%	2%	2%	2%	2%	9%
							grade 3 events	2164	2359	2046	2125	2179	9198
								1%	1%	0%	1%	1%	4%
							grade 4 events	2057	2371	2077	2000	2172	9208
								1%	1%	0%	1%	1%	4%
							grade 5 events	6628	7310	6365	7780	8114	22780
								3%	4%	3%	3%	4%	10%
							grade 6 events	3732	4318	3545	3722	4484	52007
								2%	2%	1%	1%	2%	23%
							grade 7 events	155675	148600	182376	169972	173466	94432
								85%	83%	87%	86%	85%	43%

## 2.2 Compared Parameters

Parameter	Planned	Actual	Parameter	Planned	Actual
Instrument	ACIS	ACIS	Obspar format version number	7	7
Detector	ACIS-012367	ACIS-012367	Obspar file type	PREDICTED	ACTUAL
Grating	NONE	NONE	Obspar update status	NONE	UPDATED
Data mode	VFAINT	VFAINT	CCD I0 on	Y	Y
Observation mode	POINTING	POINTING	CCD I1 on	Y	Y
[deg] Pointing RA	264.968969	265.0187642434998	CCD I2 on	Y	Y
[deg] Pointing Dec	69.009596	68.98866837970682	CCD I3 on	Y	Y
[deg] Pointing Roll	280.036755	280.1989731845212	CCD S0 on	N	N
[mm] SIM focus pos	-0.782348	-0.7809083437167272	CCD S1 on	N	N
[mm] SIM defocus	0	0.001439871863259334	CCD S2 on	O1	Y
[mm] SIM translation stage pos	-233.592463	-233.5874344608287	CCD S3 on	O2	Y
[mm] SIM translation stage offset	0	-0.005018542100998502	CCD S4 on	N	N
[s] Observation start time (MET)	307359749.184000	307357871.73316	CCD S5 on	N	N
Observation start date	2007-09-28T09:41:24	2007-09-28T09:11:11	Number of optional ACIS chips dropped	0	0
[s] Observation end time (MET)	307382449.184000	307383012.93438	On-chip summing requested	N	N
Observation end date	2007-09-28T15:59:44	2007-09-28T16:10:12	Subarray requested	NONE	NONE
Read mode	TIMED	TIMED	Alternating exposures requested	N	N
			[s] Primary exposure time	0.000000	3.2

## 2.3 Aspect



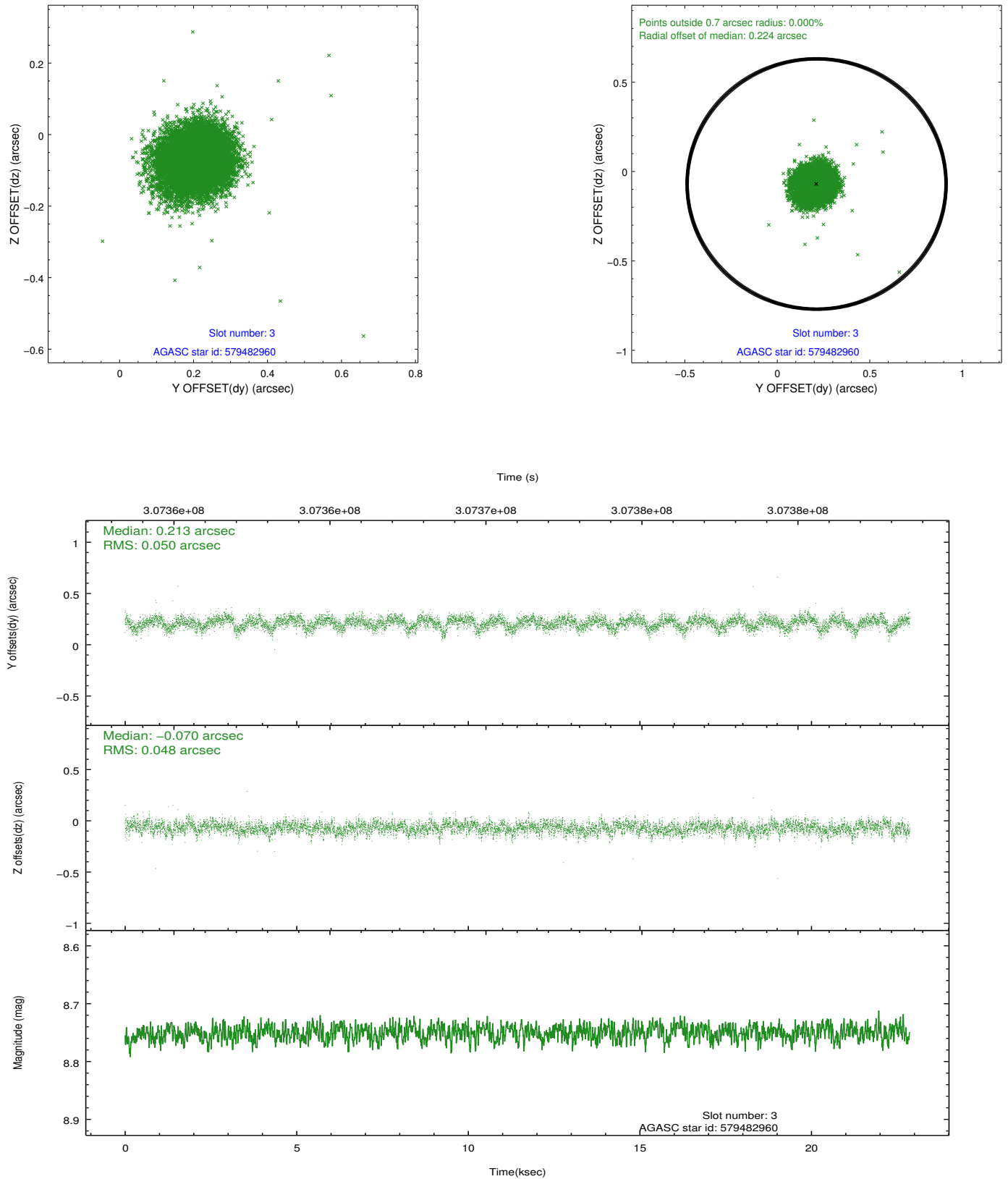


### Slot Statistics

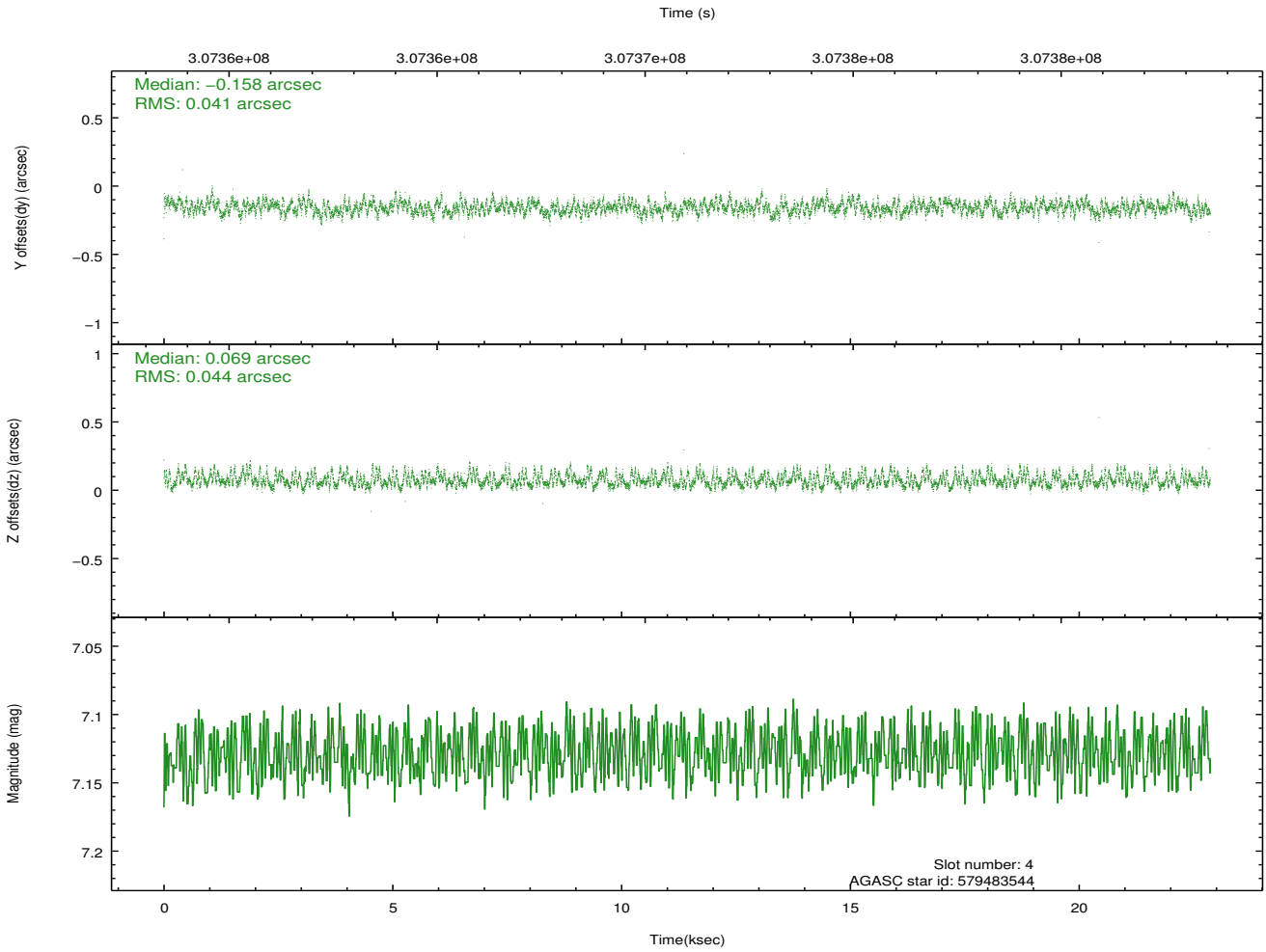
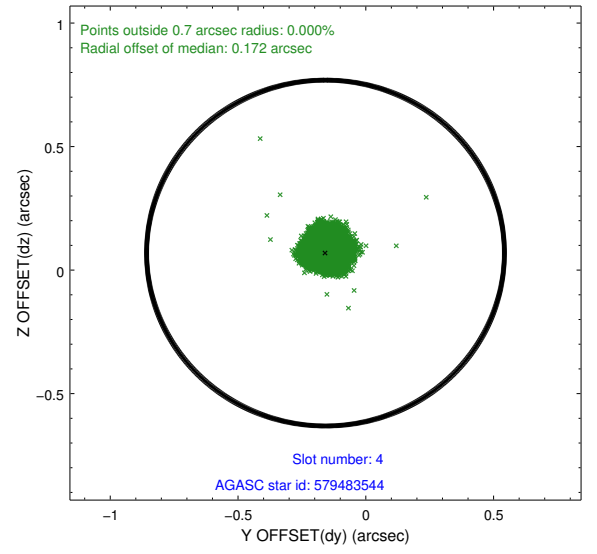
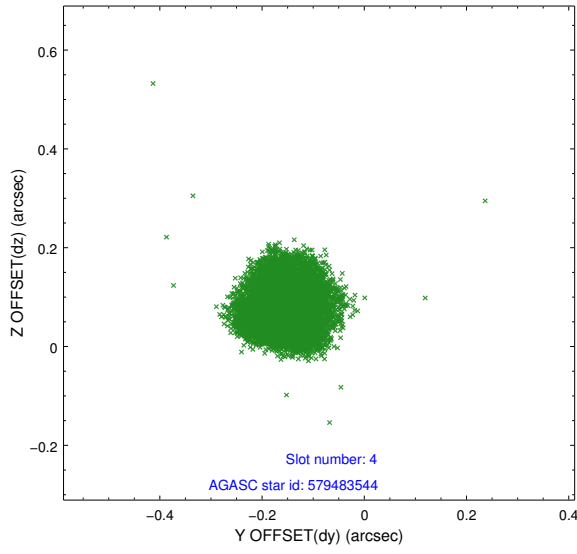
slot	status	id	mag	n_pts	med_dy	med_dz	dr1	dr2	ra	dec	mean_y	mean_z
0	FID	ACIS-I-1	7.22	5577	0.038	-0.022	0.012	0.039	0.000000	0.000000	925.57	-838.69
1	FID	ACIS-I-5	7.22	5578	-0.222	0.037	0.008	0.015	0.000000	0.000000	-1822.72	1058.78
2	FID	ACIS-I-6	7.23	5578	0.093	0.055	0.011	0.025	0.000000	0.000000	391.02	1703.46
3	GUIDE	579482960	8.75	11147	0.213	-0.070	0.073	0.118	263.977730	68.805638	488.87	-1396.14
4	GUIDE	579483544	7.13	11154	-0.158	0.069	0.064	0.100	263.876838	69.297061	-1272.73	-1186.14
5	GUIDE	580400336	8.64	11144	0.059	0.018	0.095	0.144	265.610160	69.133312	-299.71	888.08
6	GUIDE	580400656	7.20	11156	-0.036	-0.170	0.072	0.114	265.070460	69.150286	-476.77	217.02
7	GUIDE	580399264	9.19	11080	-0.077	0.144	0.093	0.148	264.643184	68.913877	264.28	-475.06

## 2.4 Star Slots

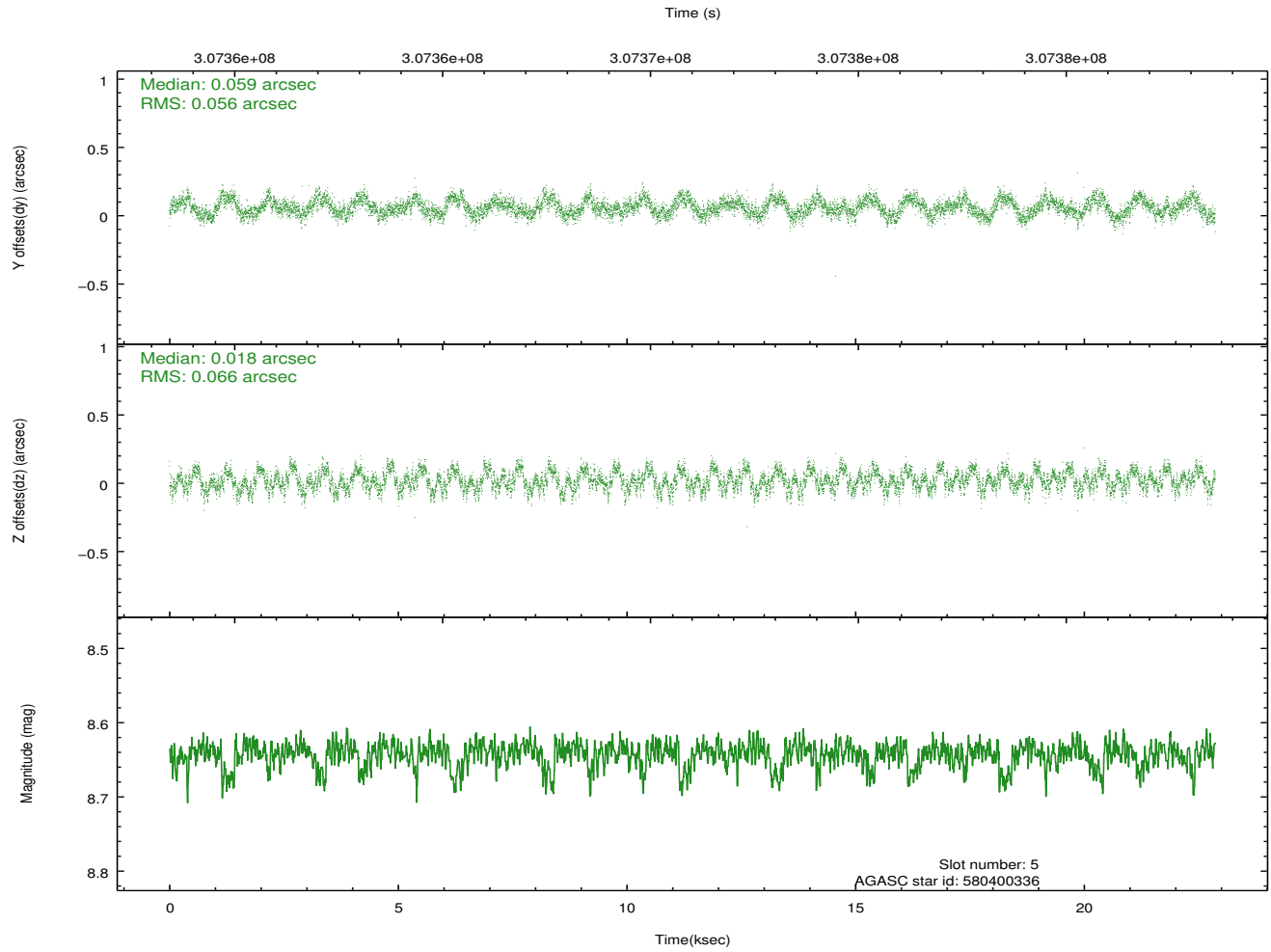
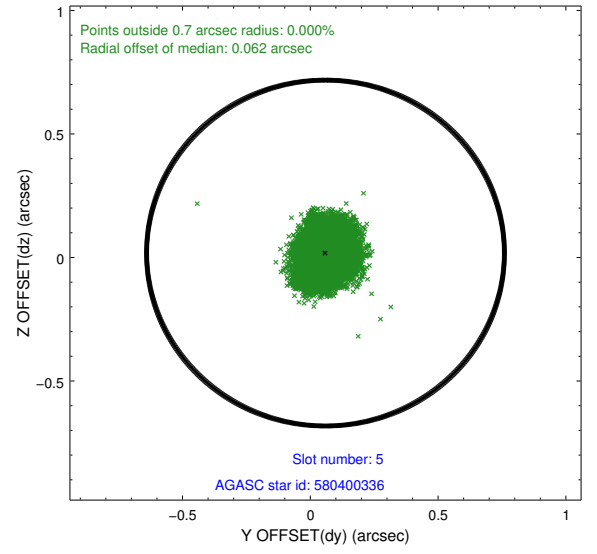
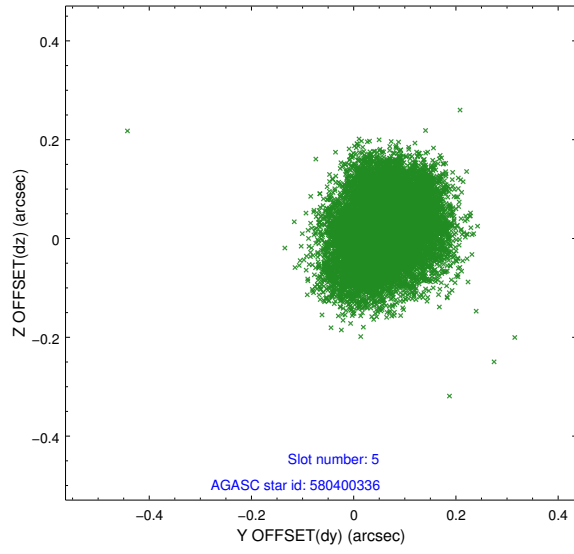
### 2.4.1 Slot 3



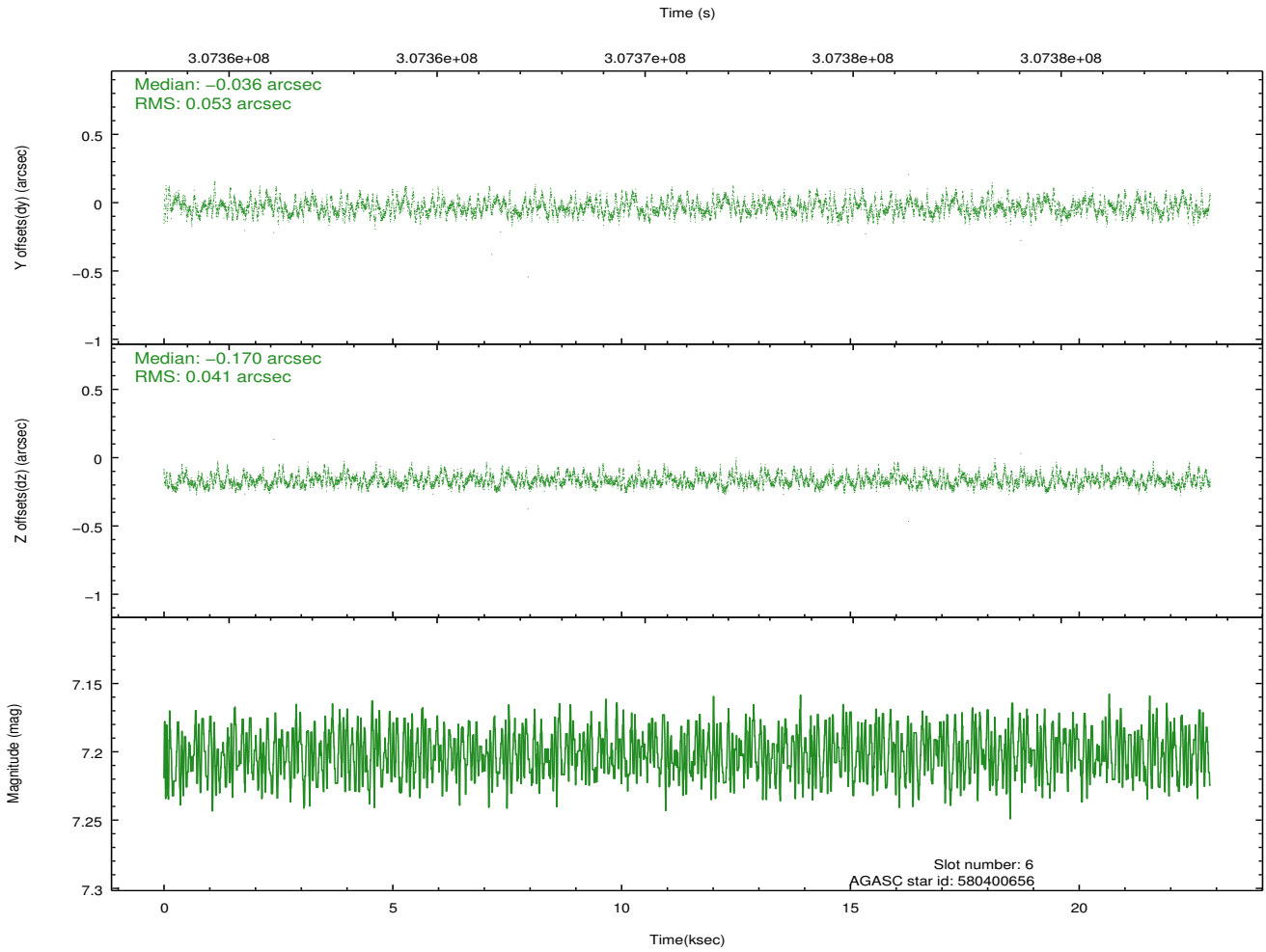
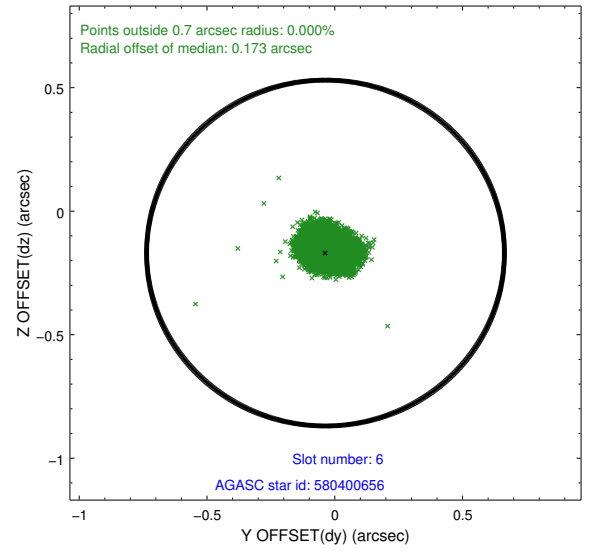
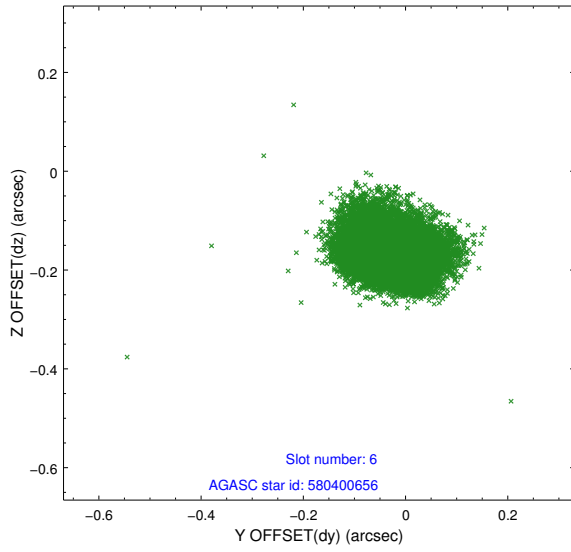
## 2.4.2 Slot 4



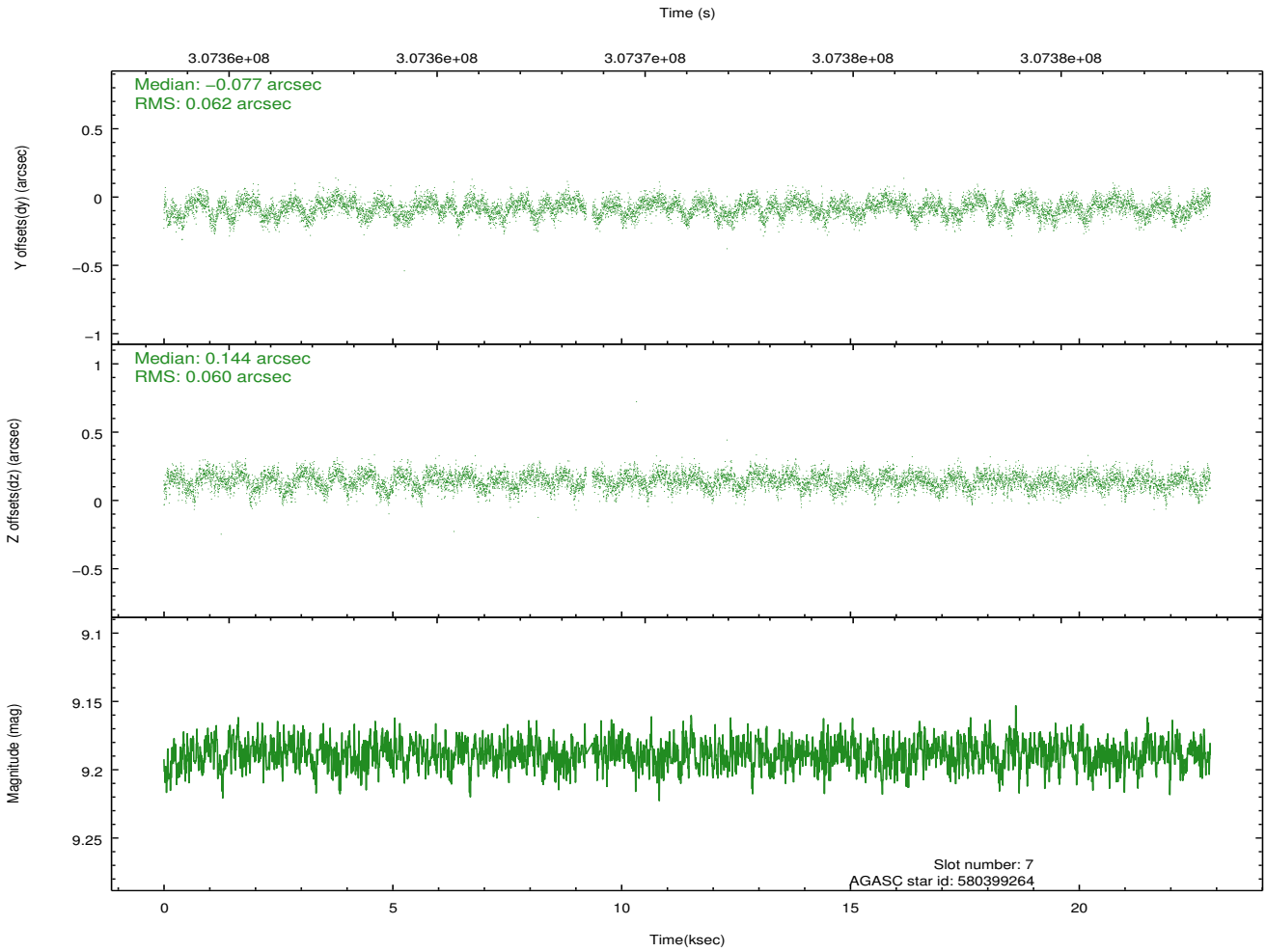
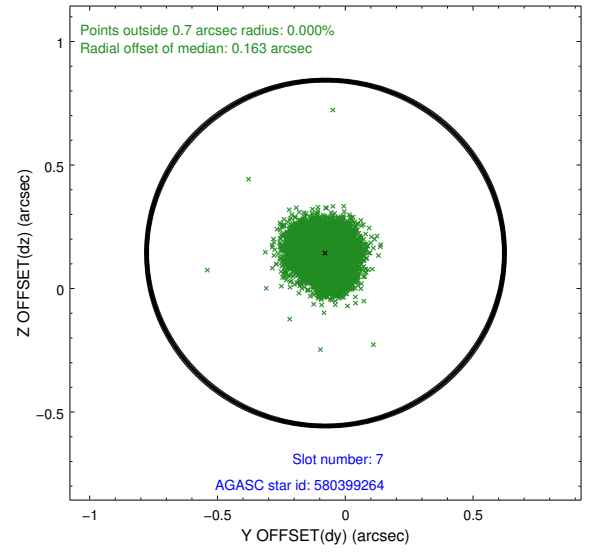
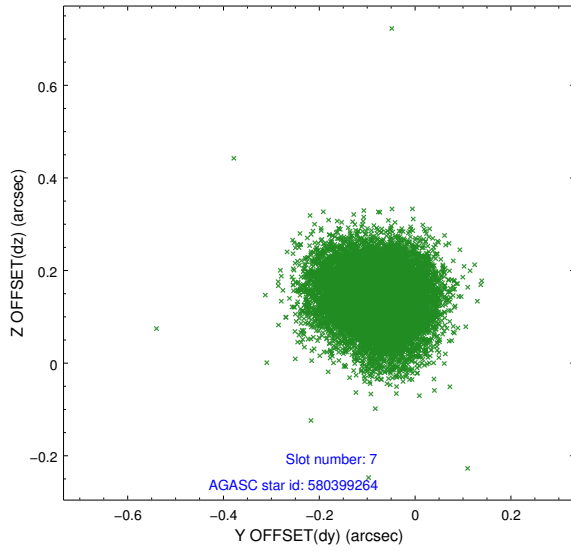
### 2.4.3 Slot 5



## 2.4.4 Slot 6

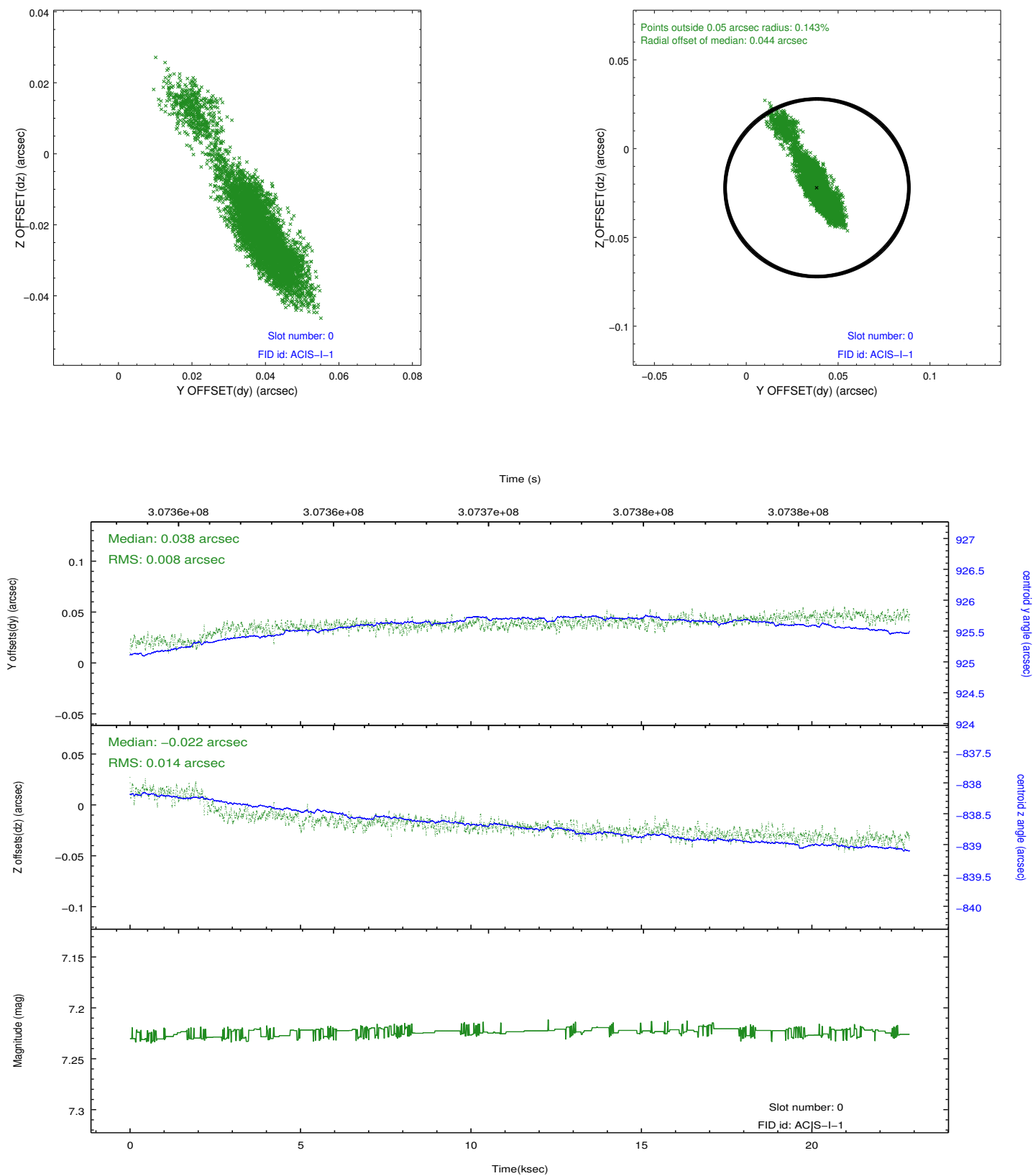


## 2.4.5 Slot 7

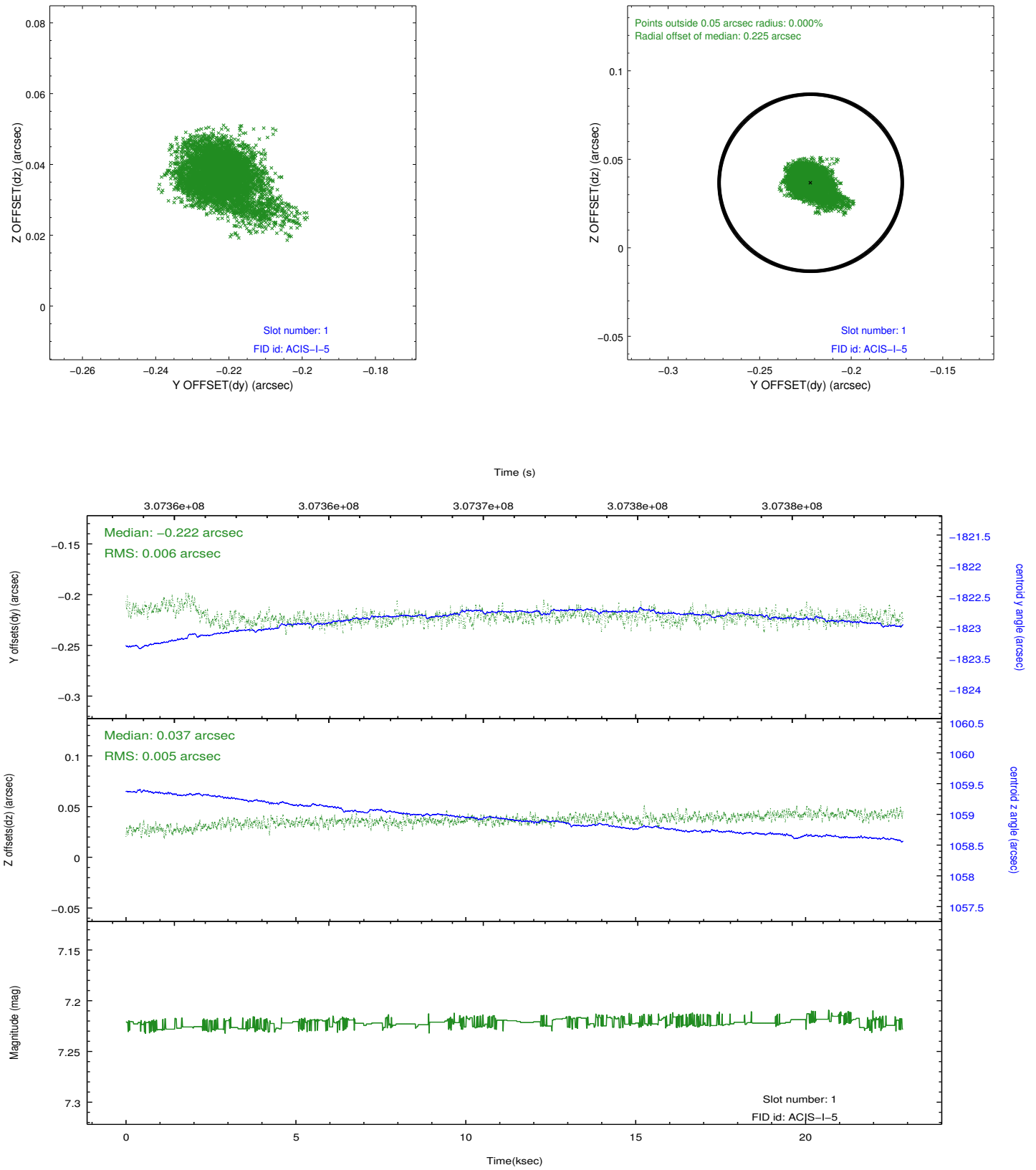


## 2.5 FID Slots

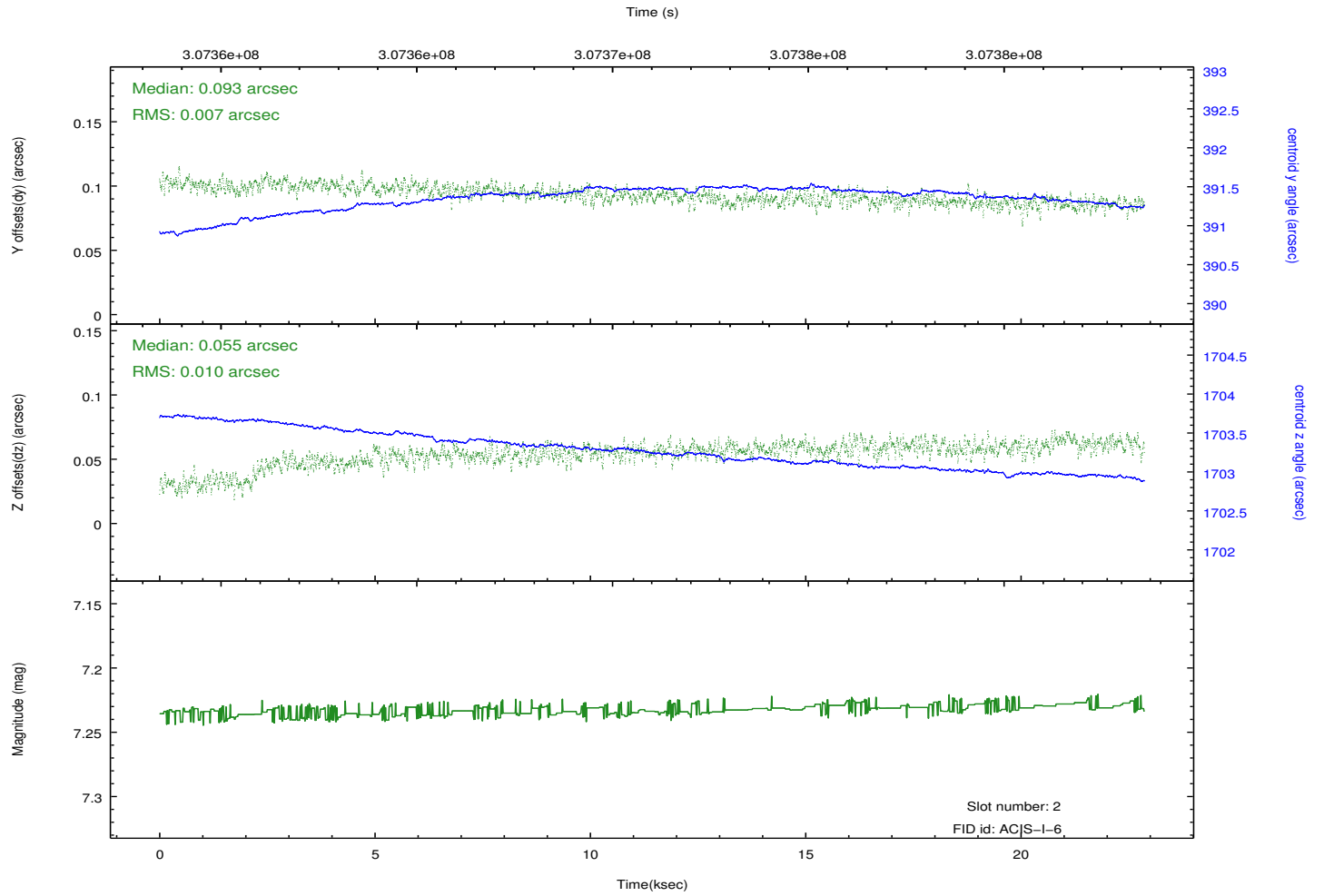
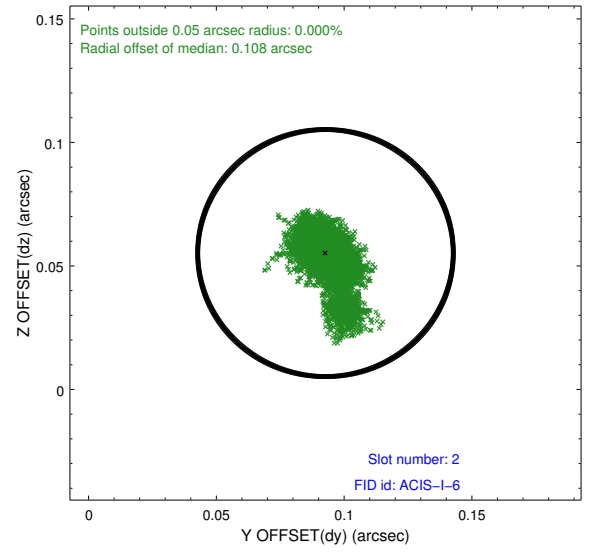
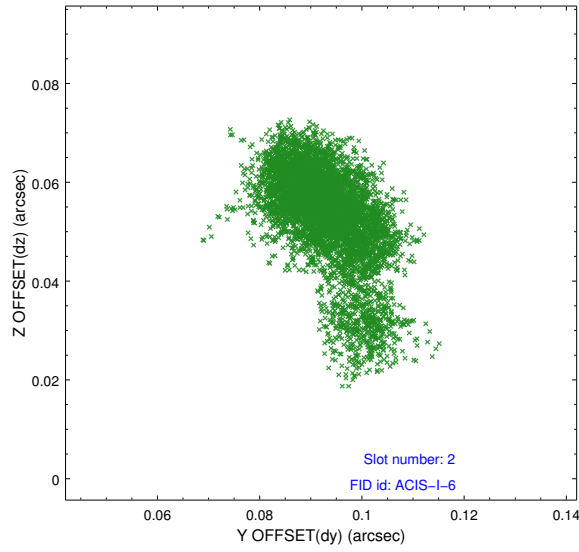
### 2.5.1 Slot 0



## 2.5.2 Slot 1



### 2.5.3 Slot 2



## A Summary

### A.1 Status

V&V Scientist	Jen Lauer
V&V Date (YYYY-MM-DD)	2012.05.04
V&V Edition	1
V&V Disposition and Status	OK
V&V Charge Time	22.8575589

### A.2 Comments

Joint proposal: CX0-Spitzer