

V&V Reference Report

L2 ASCDS Version : 8.4.4

Observation 7683 - L2 Version 2
Chandra X-Ray Center

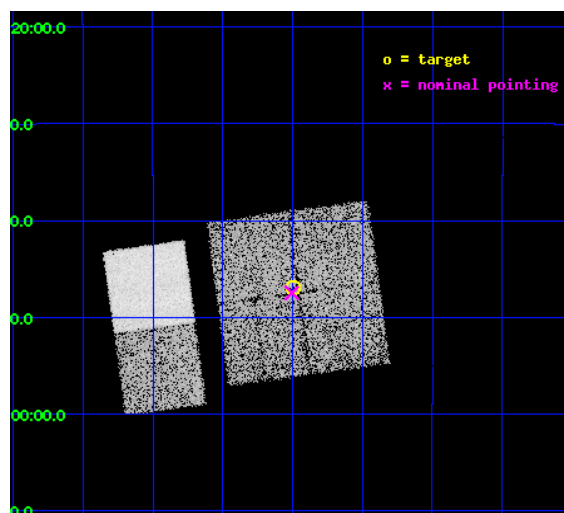
L2 Processing Date : Apr 29 2012

Contents

1	Front	2
2	OBI	3
2.1	OBI	3
2.1.1	Images	3
2.1.2	Bias	3
2.1.3	Parameters	4
2.1.4	Events	4
2.2	Compared Parameters	5
2.3	Aspect	6
2.4	Star Slots	9
2.4.1	Slot 3	9
2.4.2	Slot 4	10
2.4.3	Slot 5	11
2.4.4	Slot 6	12
2.4.5	Slot 7	13
2.5	FID Slots	14
2.5.1	Slot 0	14
2.5.2	Slot 1	15
2.5.3	Slot 2	16
A	Summary	17
A.1	Status	17
A.2	Comments	17

1 Front

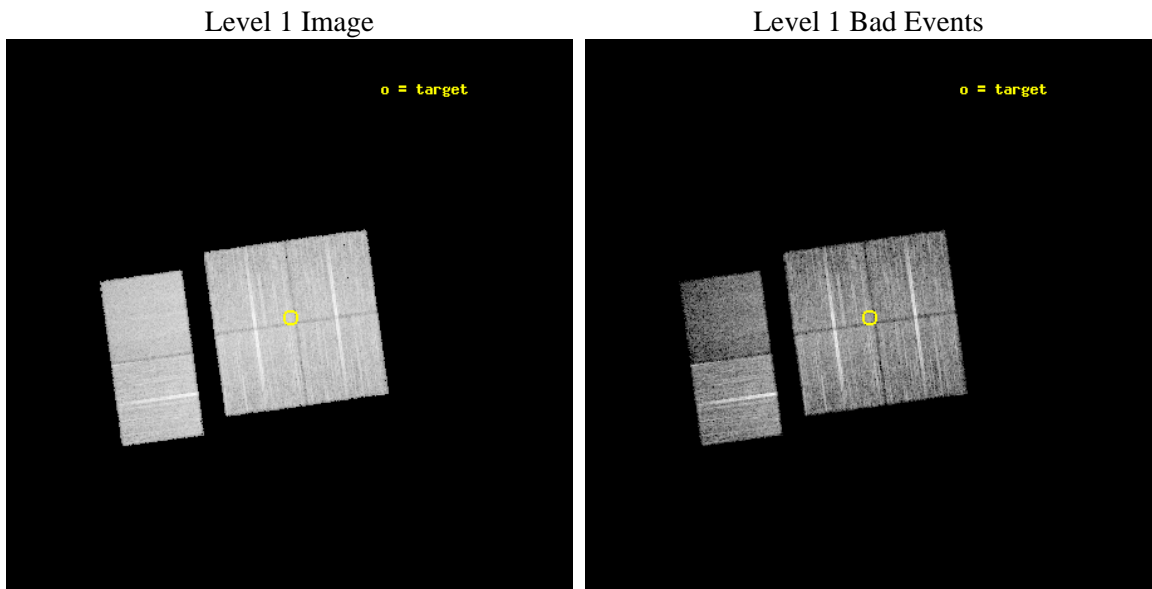
seq_num	500812	Sequence number
obs_id	7683	Observation id
title	A Better Mousetrap: Localizing RRATs with Chandra	Proposal title
observer	Dr. Shami Chatterjee	Principal investigator
object	J1848-12	Source name
dtcycle	0	
cycle	P	events from which exps? Prim/Second/Both
ra_targ	282.0	Observer's specified target RA [deg]
dec_targ	-12.783333	Observer's specified target Dec [deg]
ra_nom	282.00139177683	Nominal RA [deg]
dec_nom	-12.791307343674	Nominal Dec [deg]
roll_nom	262.18217326783	Nominal Roll [deg]
revision	2	Processing version of data
ontime	10179.199962139	Sum of GTIs [s]
livetime	10050.30480304	Livetime [s]
ontime0	10179.199962139	Sum of GTIs [s]
ontime1	10179.199962139	Sum of GTIs [s]
ontime2	10179.199962139	Sum of GTIs [s]
ontime3	10179.199962139	Sum of GTIs [s]
ontime6	10179.199962139	Sum of GTIs [s]
ontime7	10179.199962139	Sum of GTIs [s]
l2events	67109	Number of level 2 events



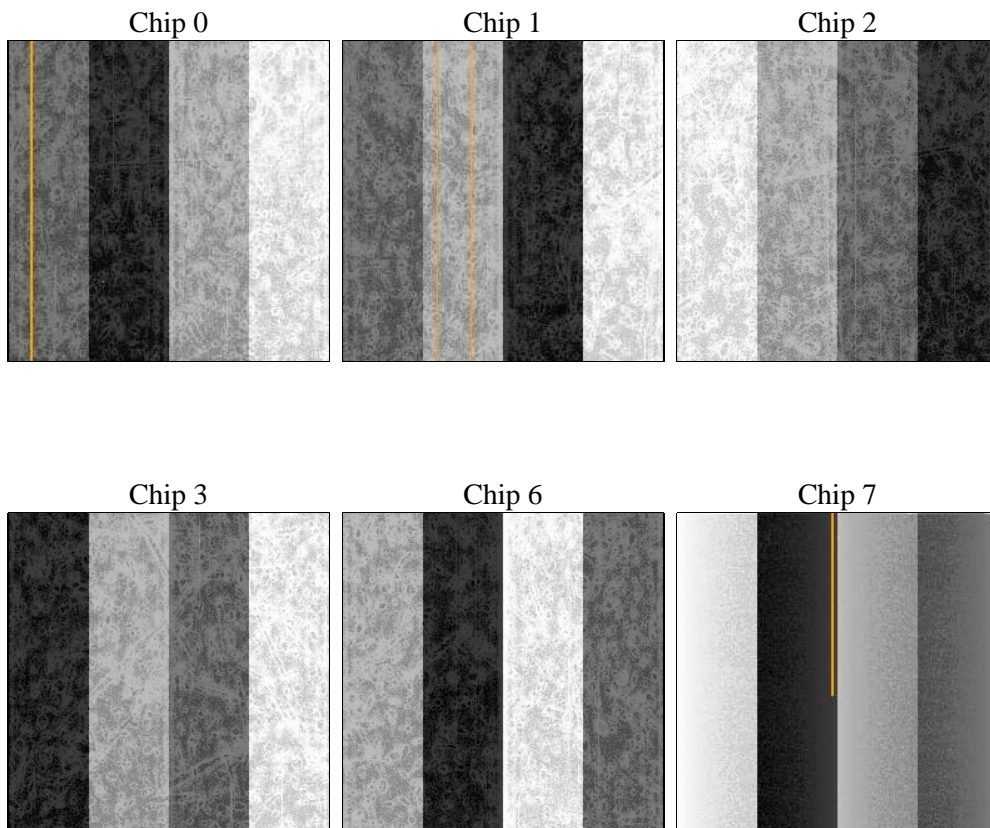
2 OBI

2.1 OBI

2.1.1 Images



2.1.2 Bias



2.1.3 Parameters

obi_num	0	Obi number	sched_exp_time	10000.000000	[s] Scheduled observation exposure time
ascdsver	8.4.4	Processing system revision	ontime	10179.199962139	Sum of GTIs [s]
caldsver	4.4.9	 	ontime0	10179.199962139	Sum of GTIs [s]
date	2012-04-29T13:11:36	Date and time of file creation	ontime1	10179.199962139	Sum of GTIs [s]
revision	2	Processing version of data	ontime2	10179.199962139	Sum of GTIs [s]
			ontime3	10179.199962139	Sum of GTIs [s]
			ontime6	10179.199962139	Sum of GTIs [s]
			ontime7	10179.199962139	Sum of GTIs [s]
			l1events	460630	Number of level 1 events

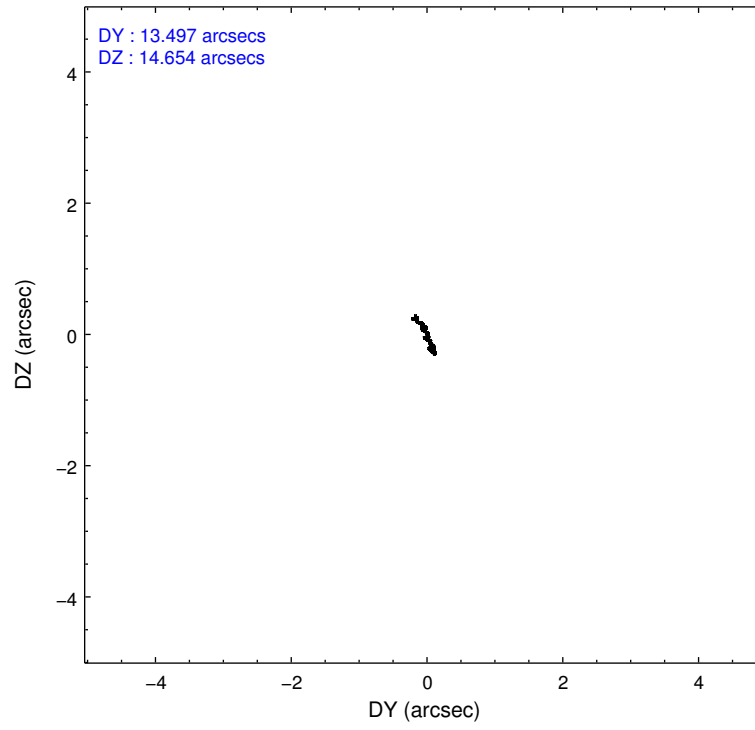
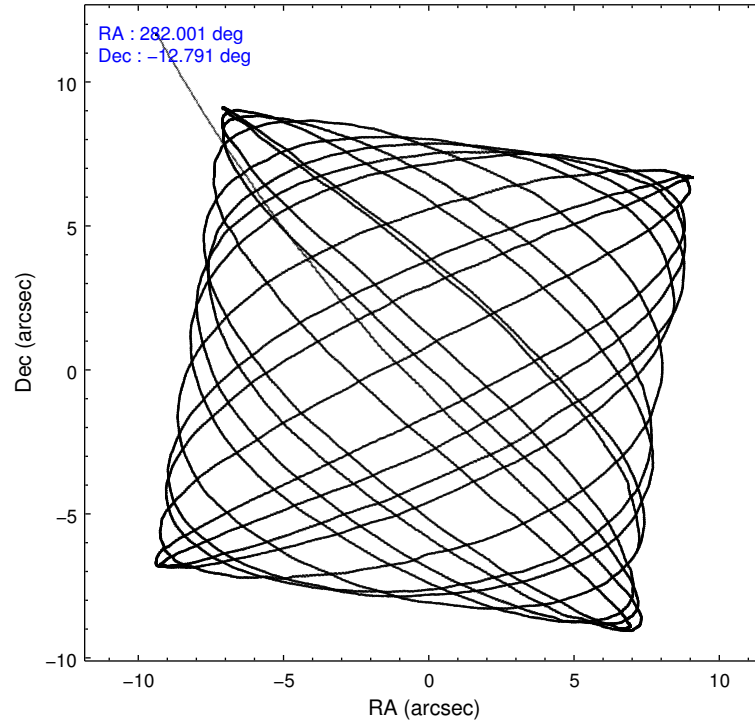
2.1.4 Events

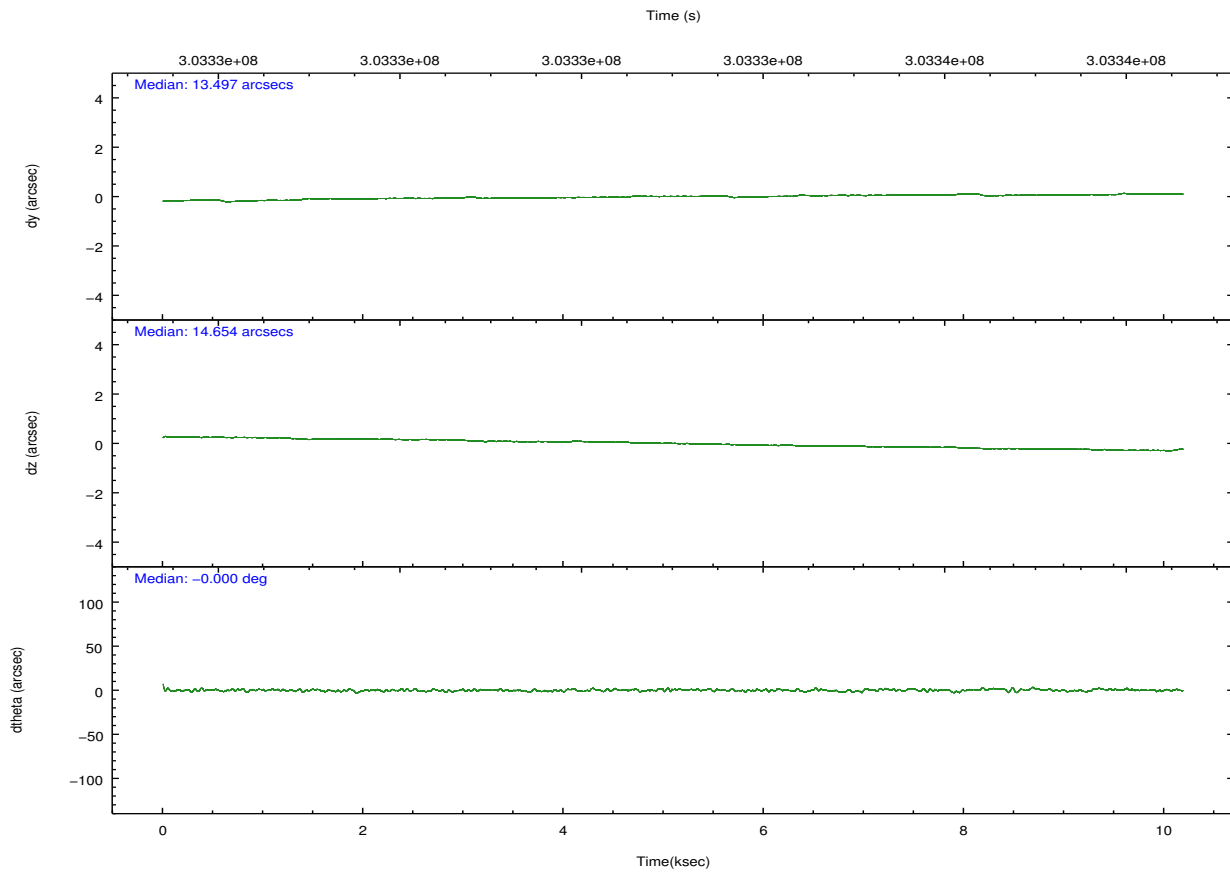
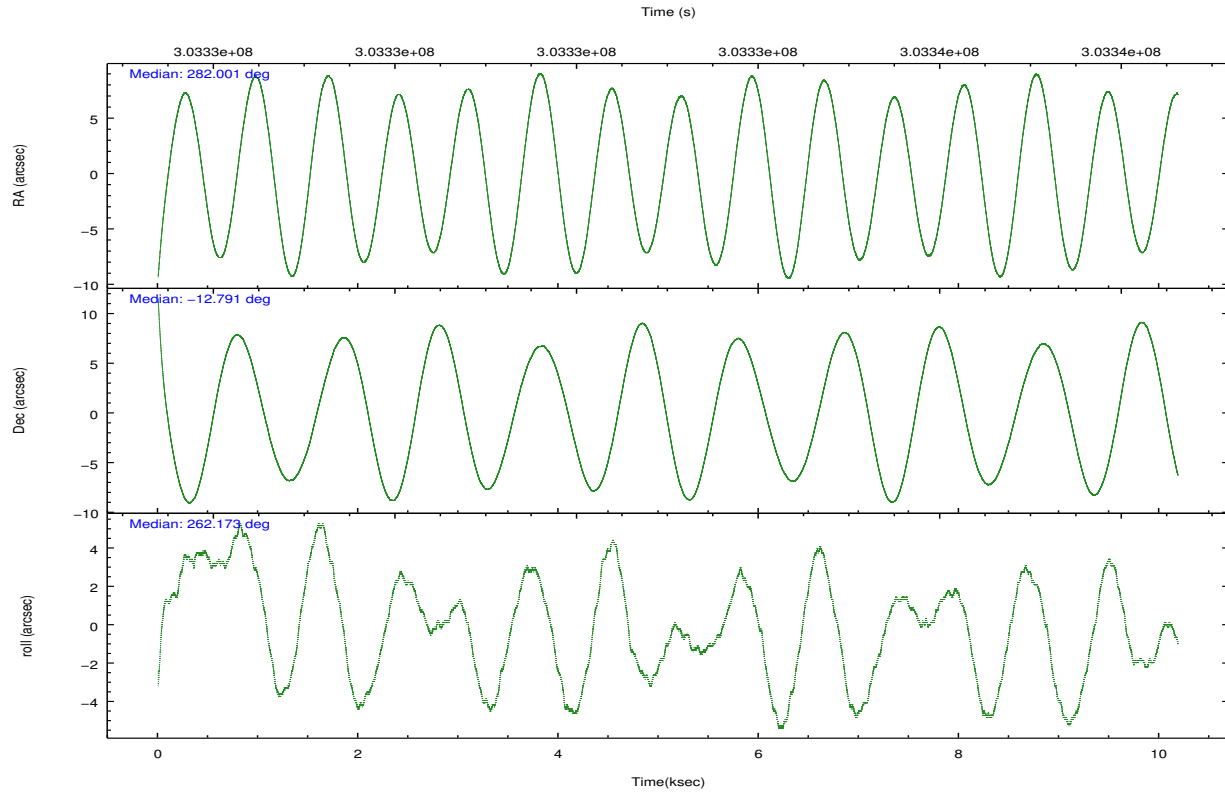
	ccd 0	ccd 1	ccd 2	ccd 3	ccd 6	ccd 7		ccd 0	ccd 1	ccd 2	ccd 3	ccd 6	ccd 7
level 1 events	73146	72213	84417	76343	80478	74033	grade 0 events	2989	2923	2942	2888	3258	3879
rejected events	65430	64111	77089	69018	72207	37597		4%	4%	3%	3%	4%	5%
rejected %	89%	88%	91%	90%	89%	50%	grade 1 events	37	31	45	50	49	127
								0%	0%	0%	0%	0%	0%
							grade 2 events	1881	1791	1673	1549	1809	7820
								2%	2%	1%	2%	2%	10%
							grade 3 events	825	964	761	807	865	3597
								1%	1%	0%	1%	1%	4%
							grade 4 events	791	901	816	849	852	3447
								1%	1%	0%	1%	1%	4%
							grade 5 events	2307	2565	2009	2552	2717	7901
								3%	3%	2%	3%	3%	10%
							grade 6 events	1309	1606	1216	1308	1569	18039
								1%	2%	1%	1%	1%	24%
							grade 7 events	63007	61432	74955	66340	69359	29223
								86%	85%	88%	86%	86%	39%

2.2 Compared Parameters

Parameter	Planned	Actual	Parameter	Planned	Actual
Instrument	ACIS	ACIS	Obspar format version number	7	7
Detector	ACIS-012367	ACIS-012367	Obspar file type	PREDICTED	ACTUAL
Grating	NONE	NONE	Obspar update status	NONE	UPDATED
Data mode	FAINT	FAINT	CCD I0 on	Y	Y
Observation mode	POINTING	POINTING	CCD I1 on	Y	Y
[deg] Pointing RA	281.990614	282.0013917768331	CCD I2 on	Y	Y
[deg] Pointing Dec	-12.765882	-12.7913073436739	CCD I3 on	Y	Y
[deg] Pointing Roll	261.971105	262.1821732678295	CCD S0 on	N	N
[mm] SIM focus pos	-0.782348	-0.7809083437167272	CCD S1 on	N	N
[mm] SIM defocus	0	0.001439871863259334	CCD S2 on	O1	Y
[mm] SIM translation stage pos	-233.592463	-233.5899487761303	CCD S3 on	O2	Y
[mm] SIM translation stage offset	0	-0.002504226799430853	CCD S4 on	N	N
[s] Observation start time (MET)	303328097.184000	303326974.98929	CCD S5 on	N	N
Observation start date	2007-08-12T17:47:12	2007-08-12T17:29:34	Number of optional ACIS chips dropped	0	0
[s] Observation end time (MET)	303338097.184000	303338767.61486	On-chip summing requested	N	N
Observation end date	2007-08-12T20:33:52	2007-08-12T20:46:07	Subarray requested	NONE	NONE
Read mode	TIMED	TIMED	Alternating exposures requested	N	N
			[s] Primary exposure time	0.000000	3.2

2.3 Aspect



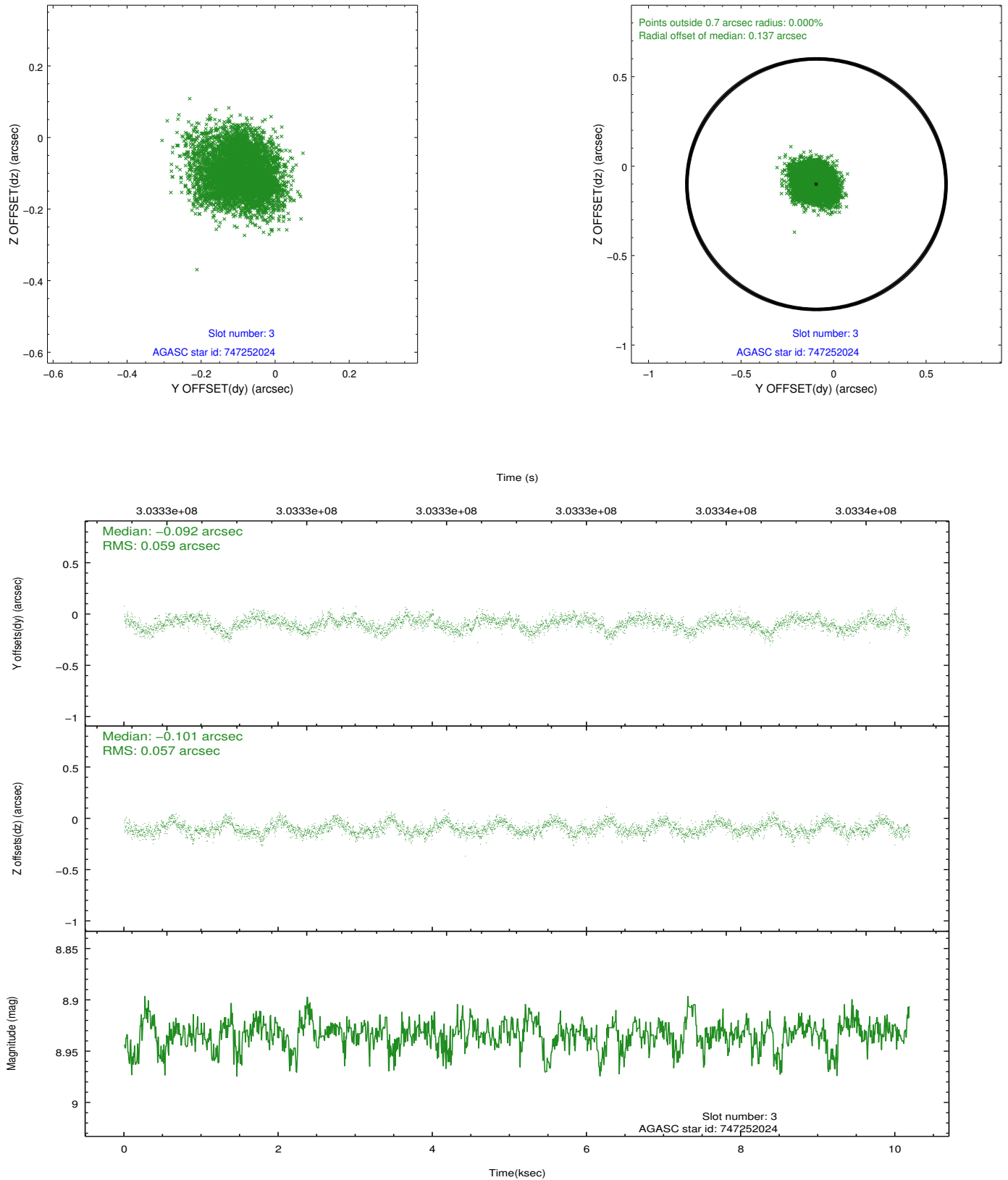


Slot Statistics

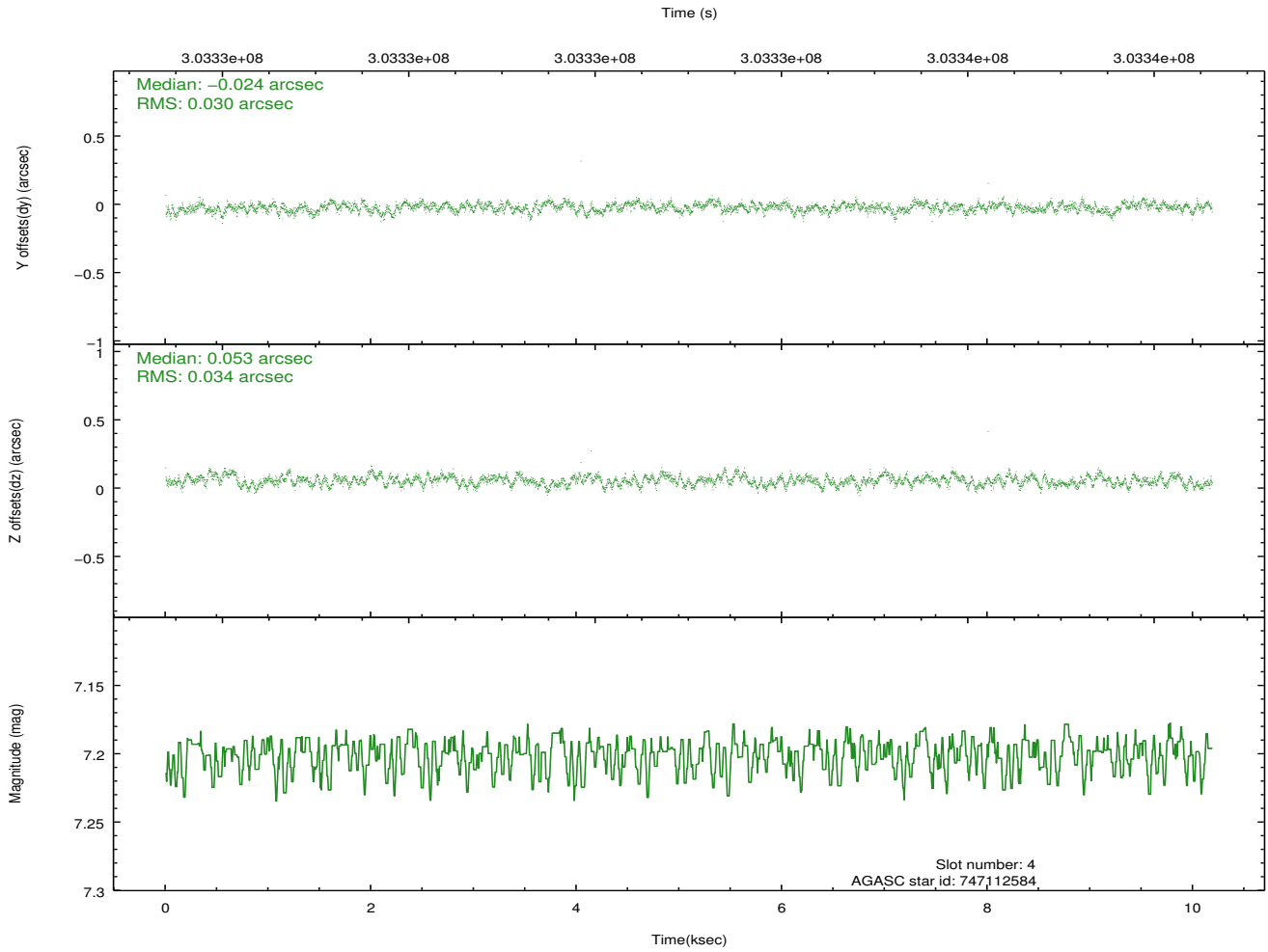
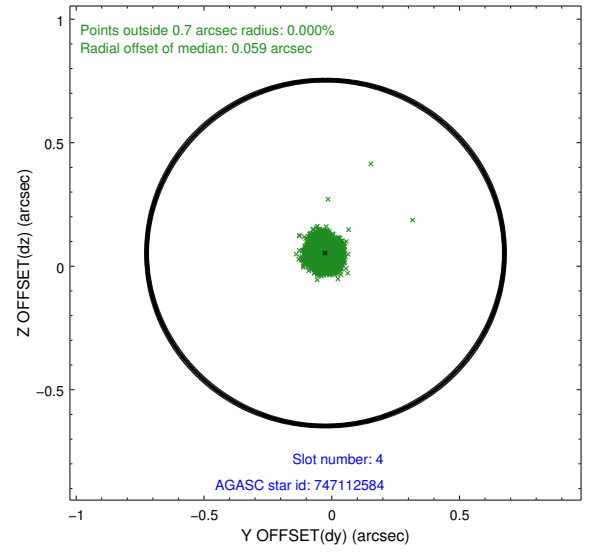
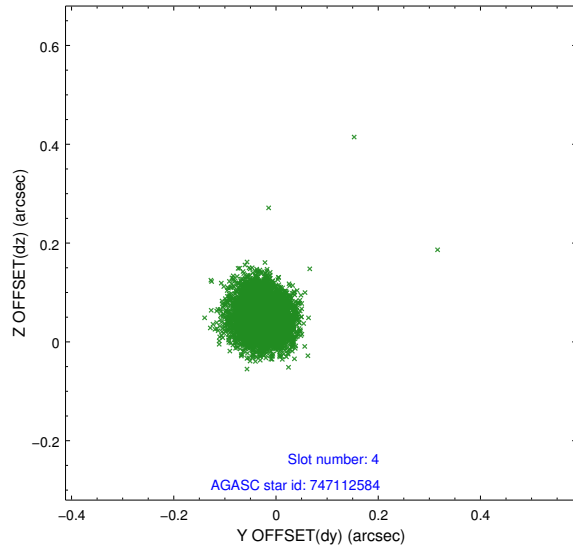
slot	status	id	mag	n_pts	med_dy	med_dz	dr1	dr2	ra	dec	mean_y	mean_z
0	FID	ACIS-I-1	7.23	2485	-0.049	0.078	0.011	0.019	0.000000	0.000000	925.95	-838.13
1	FID	ACIS-I-2	7.14	2484	-0.155	-0.094	0.008	0.014	0.000000	0.000000	-767.96	-844.95
2	FID	ACIS-I-4	7.15	2485	0.106	0.083	0.007	0.012	0.000000	0.000000	2145.81	1061.38
3	GUIDE	747252024	8.93	4968	-0.092	-0.101	0.088	0.140	282.401109	-12.361007	-1643.73	1225.93
4	GUIDE	747112584	7.20	4969	-0.024	0.053	0.048	0.075	281.331409	-12.584885	-318.51	-2383.55
5	GUIDE	747117232	9.40	4965	-0.029	-0.001	0.105	0.171	281.468972	-12.090524	-2148.67	-2158.23
6	GUIDE	747254504	9.22	4943	0.113	-0.012	0.103	0.169	282.212428	-12.556287	-855.77	666.17
7	GUIDE	747249184	9.38	4964	0.031	0.058	0.092	0.148	282.301591	-12.595540	-759.14	996.68

2.4 Star Slots

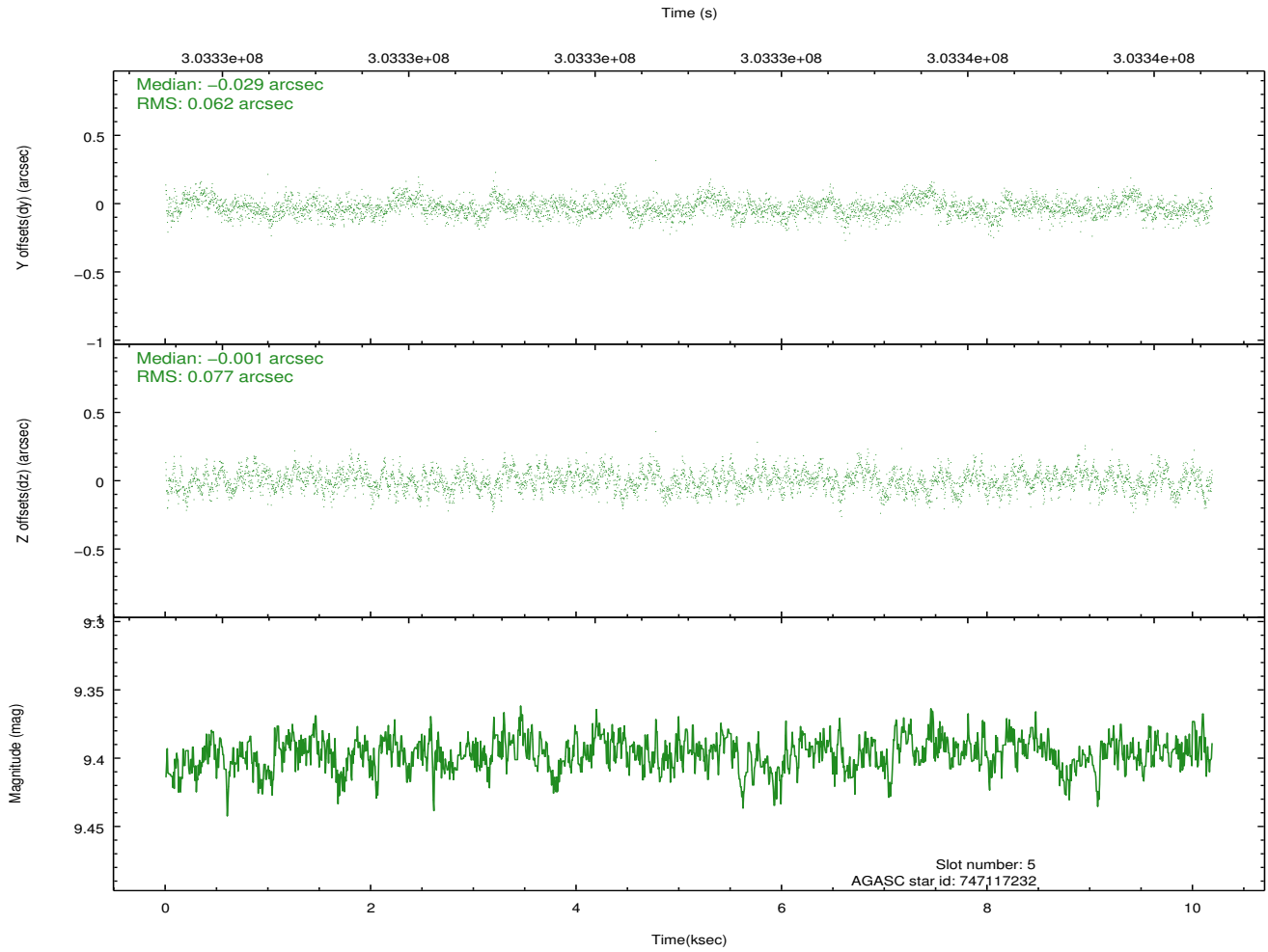
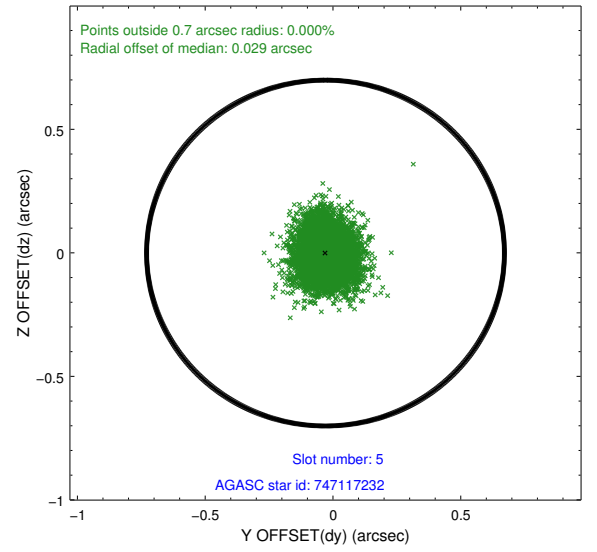
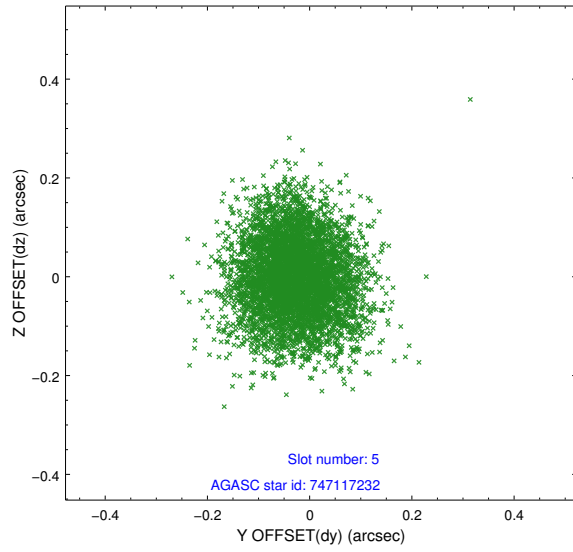
2.4.1 Slot 3



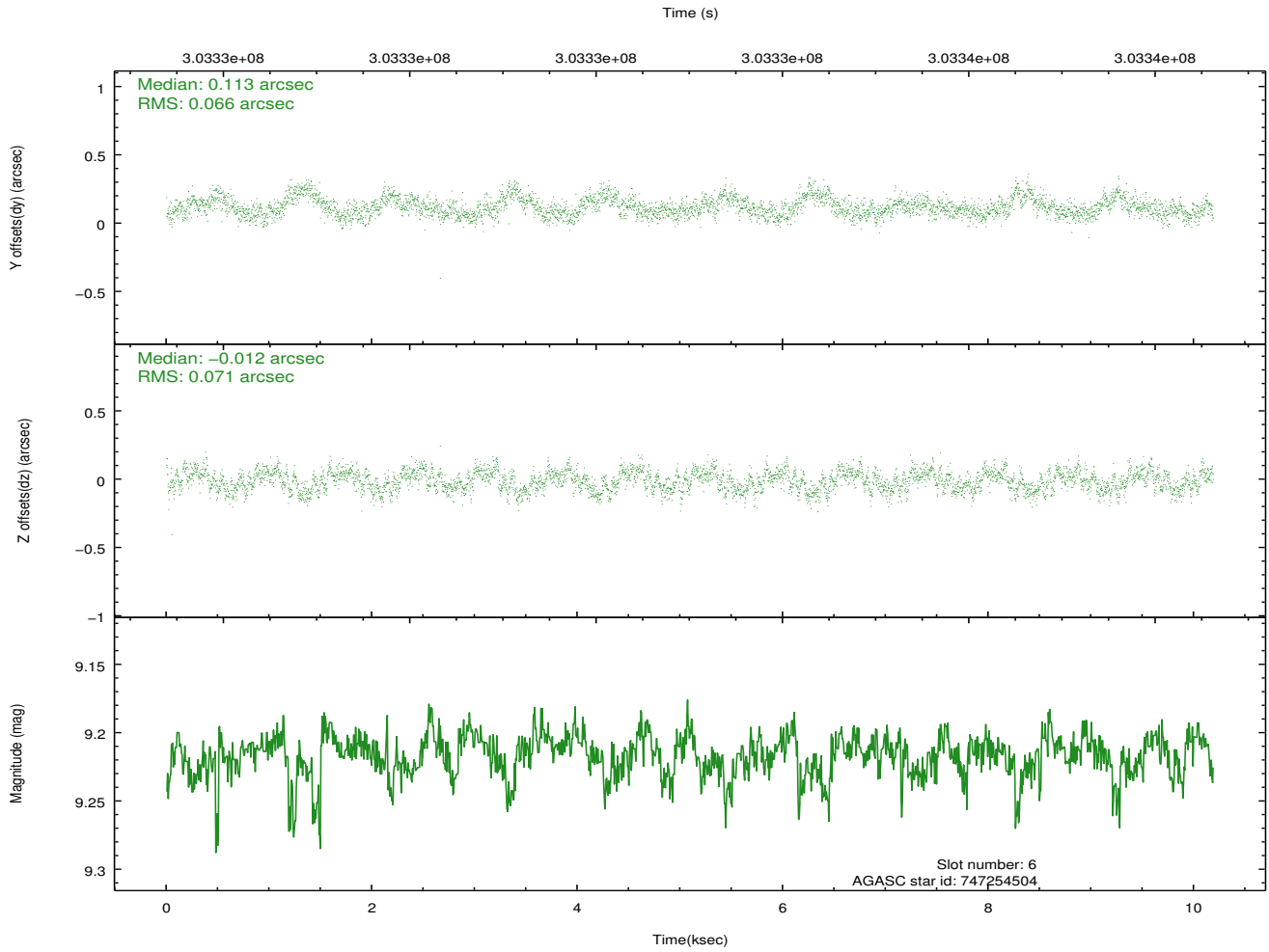
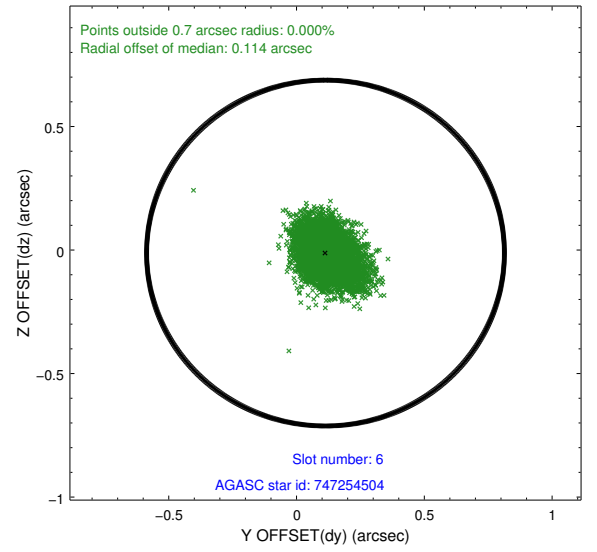
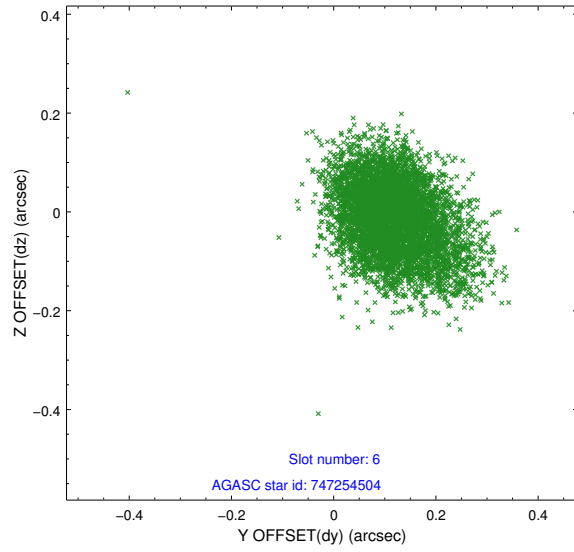
2.4.2 Slot 4



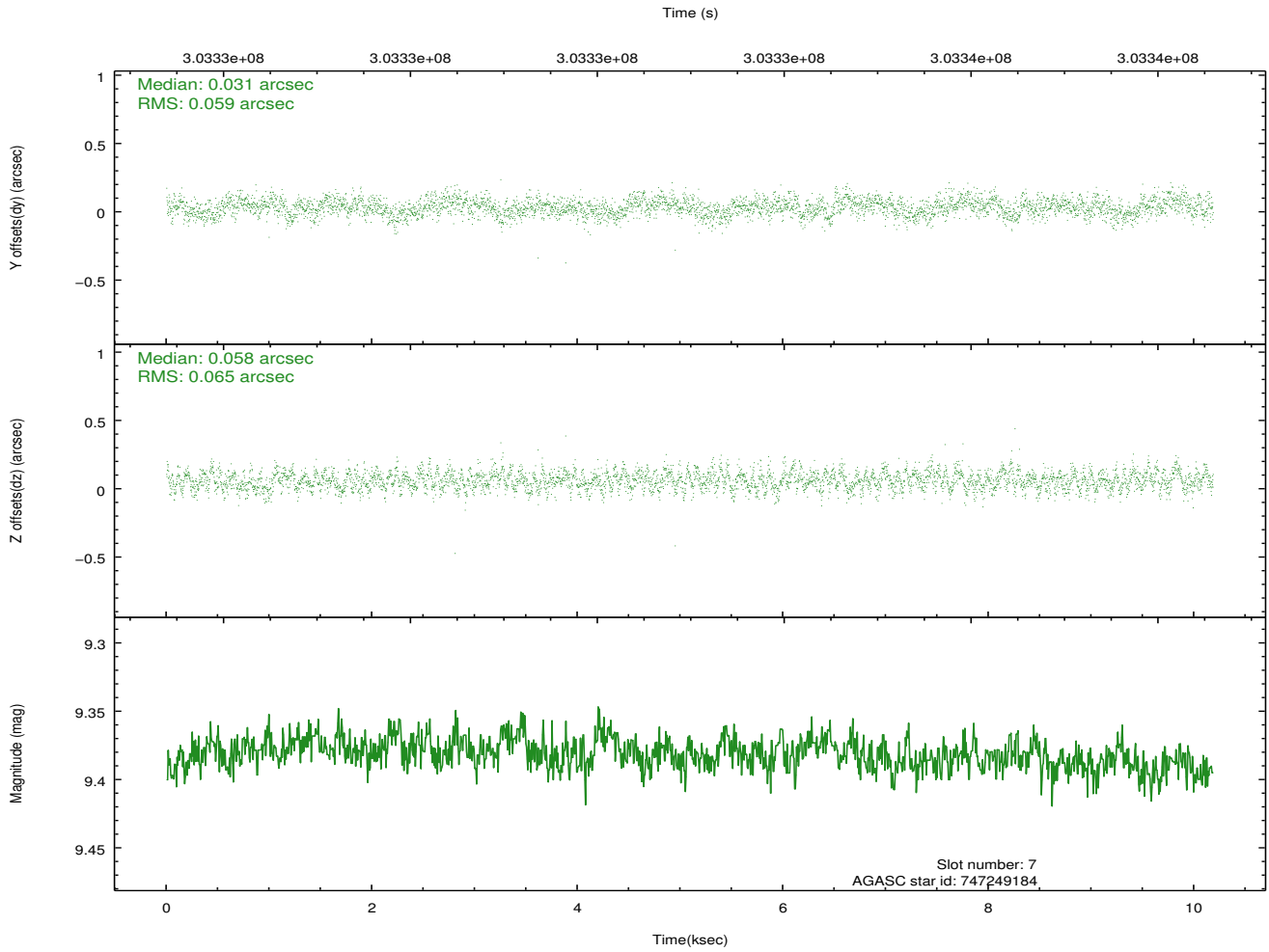
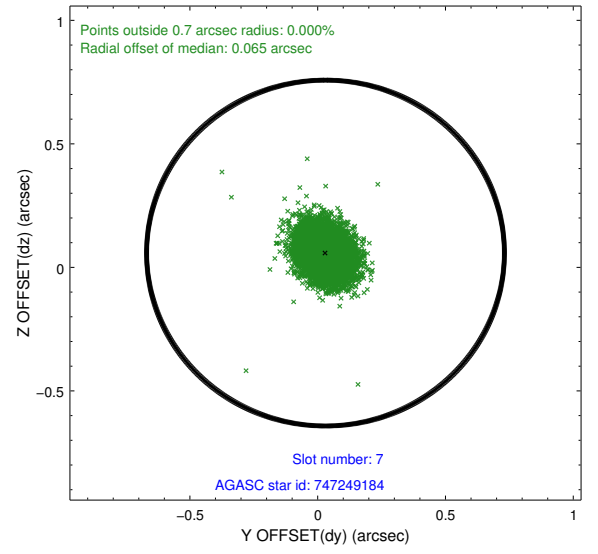
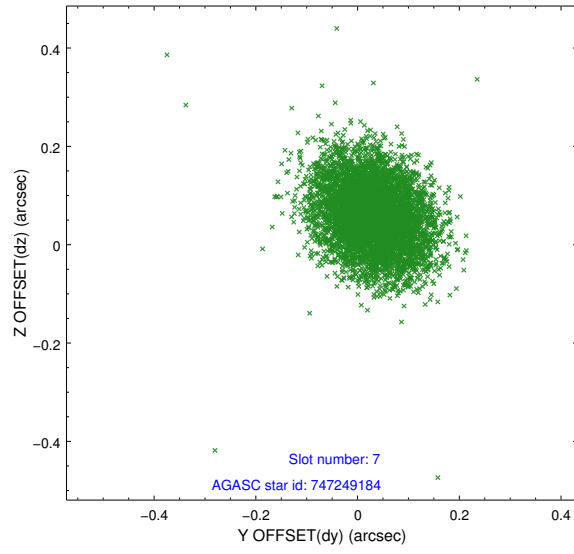
2.4.3 Slot 5



2.4.4 Slot 6

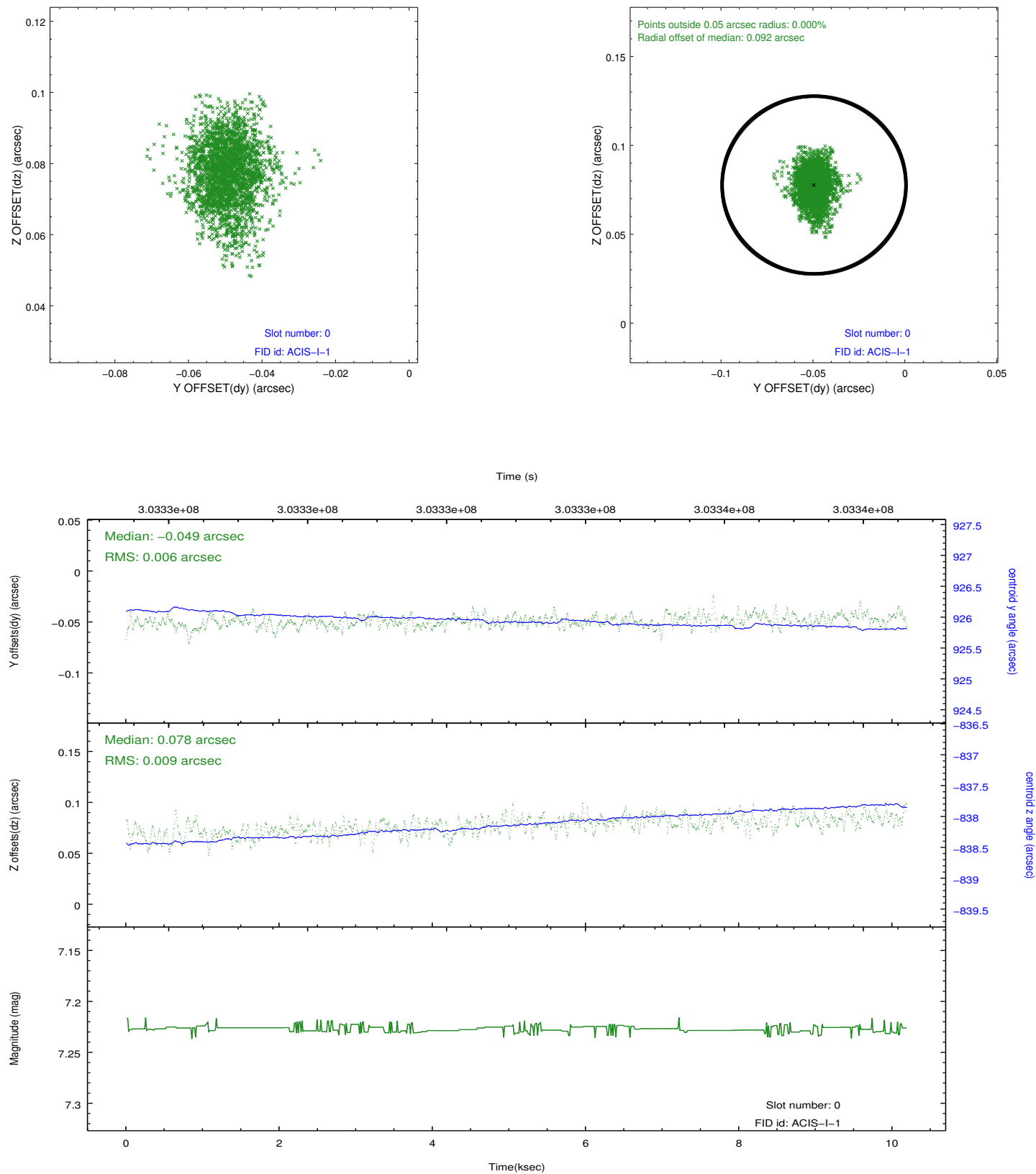


2.4.5 Slot 7

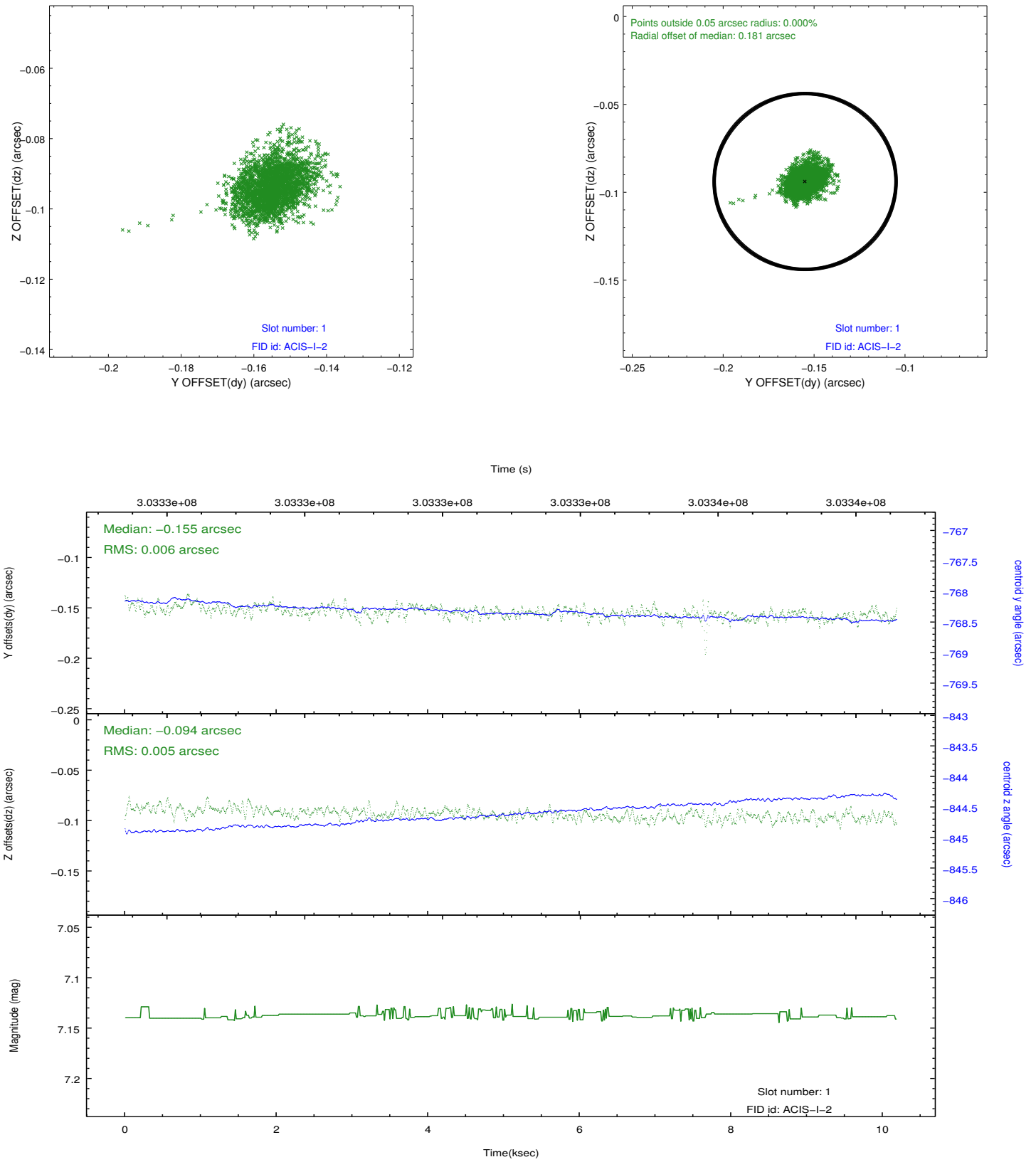


2.5 FID Slots

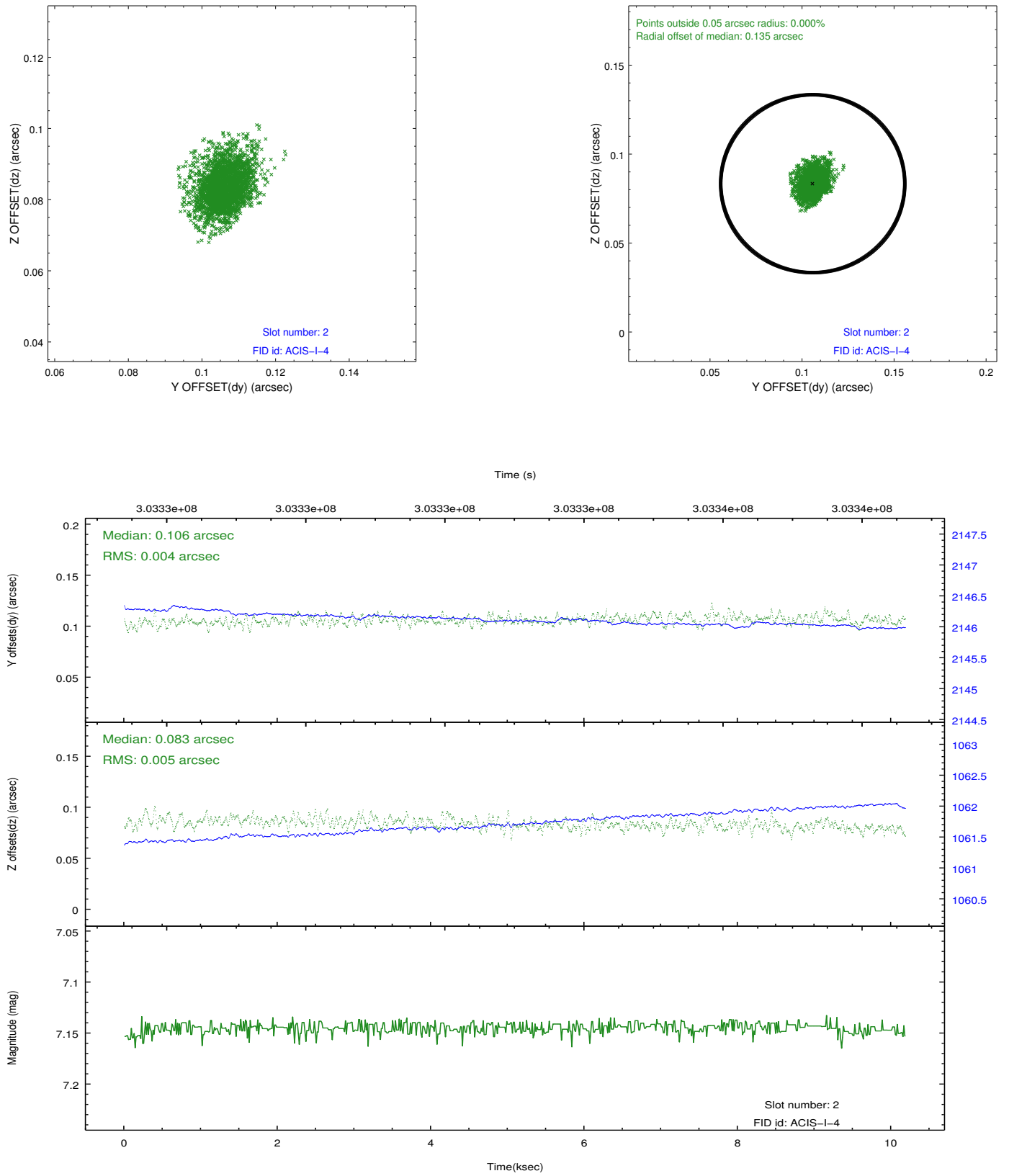
2.5.1 Slot 0



2.5.2 Slot 1



2.5.3 Slot 2



A Summary

A.1 Status

V&V Scientist	Jen Lauer
V&V Date (YYYY-MM-DD)	2012.05.02
V&V Edition	1
V&V Disposition and Status	OK
V&V Charge Time	10.1791999

A.2 Comments