

V&V Reference Report

L2 ASCDS Version : 8.4.4

Observation 7627 - L2 Version 2
Chandra X-Ray Center

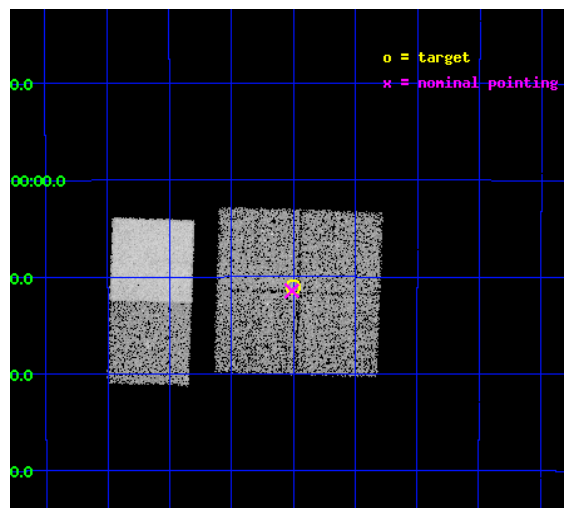
L2 Processing Date : Apr 30 2012

Contents

1	Front	2
2	OBI	3
2.1	OBI	3
2.1.1	Images	3
2.1.2	Bias	3
2.1.3	Parameters	4
2.1.4	Events	4
2.2	Compared Parameters	5
2.3	Aspect	6
2.4	Star Slots	9
2.4.1	Slot 3	9
2.4.2	Slot 4	10
2.4.3	Slot 5	11
2.4.4	Slot 6	12
2.4.5	Slot 7	13
2.5	FID Slots	14
2.5.1	Slot 0	14
2.5.2	Slot 1	15
2.5.3	Slot 2	16
A	Summary	17
A.1	Status	17
A.2	Comments	17

1 Front

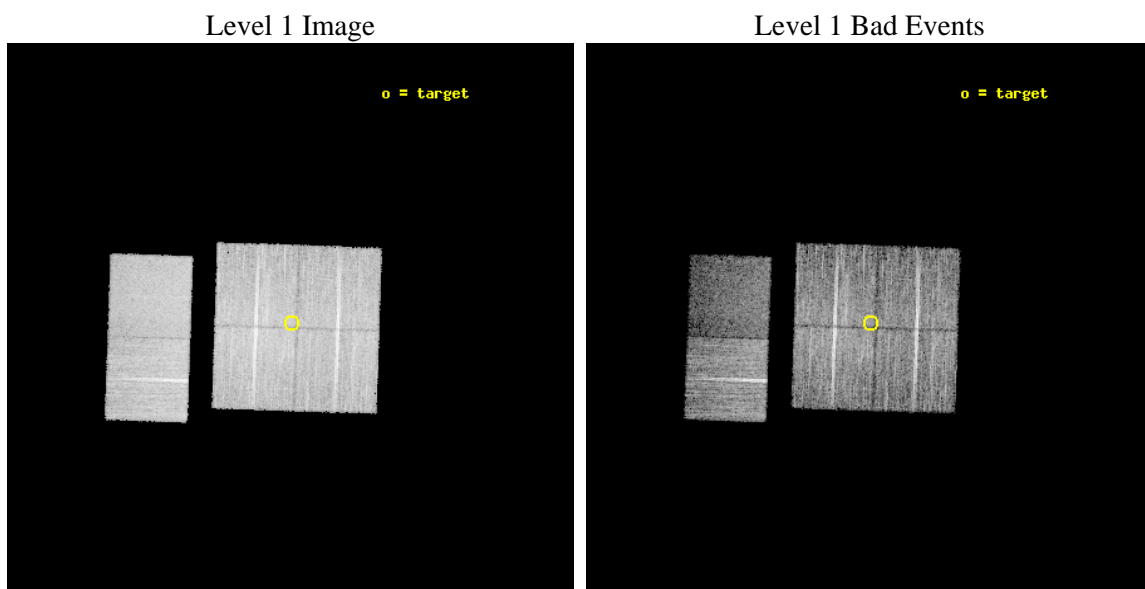
seq_num	500756	Sequence number
obs_id	7627	Observation id
title	A Better Mousetrap: Localizing RRATs with Chandra	Proposal title
observer	Dr. Shami Chatterjee	Principal investigator
object	J1754-30	Source name
dtcycle	0	
cycle	P	events from which exps? Prim/Second/Both
ra_targ	268.5	Observer's specified target RA [deg]
dec_targ	-30.183333	Observer's specified target Dec [deg]
ra_nom	268.50307851636	Nominal RA [deg]
dec_nom	-30.190909031691	Nominal Dec [deg]
roll_nom	271.93568460449	Nominal Roll [deg]
revision	2	Processing version of data
ontime	10041.599962652	Sum of GTIs [s]
livetime	9914.447177599	Livetime [s]
ontime0	10041.599962652	Sum of GTIs [s]
ontime1	10041.599962652	Sum of GTIs [s]
ontime2	10041.599962652	Sum of GTIs [s]
ontime3	10041.599962652	Sum of GTIs [s]
ontime6	10041.599962652	Sum of GTIs [s]
ontime7	10041.599962652	Sum of GTIs [s]
l2events	75195	Number of level 2 events



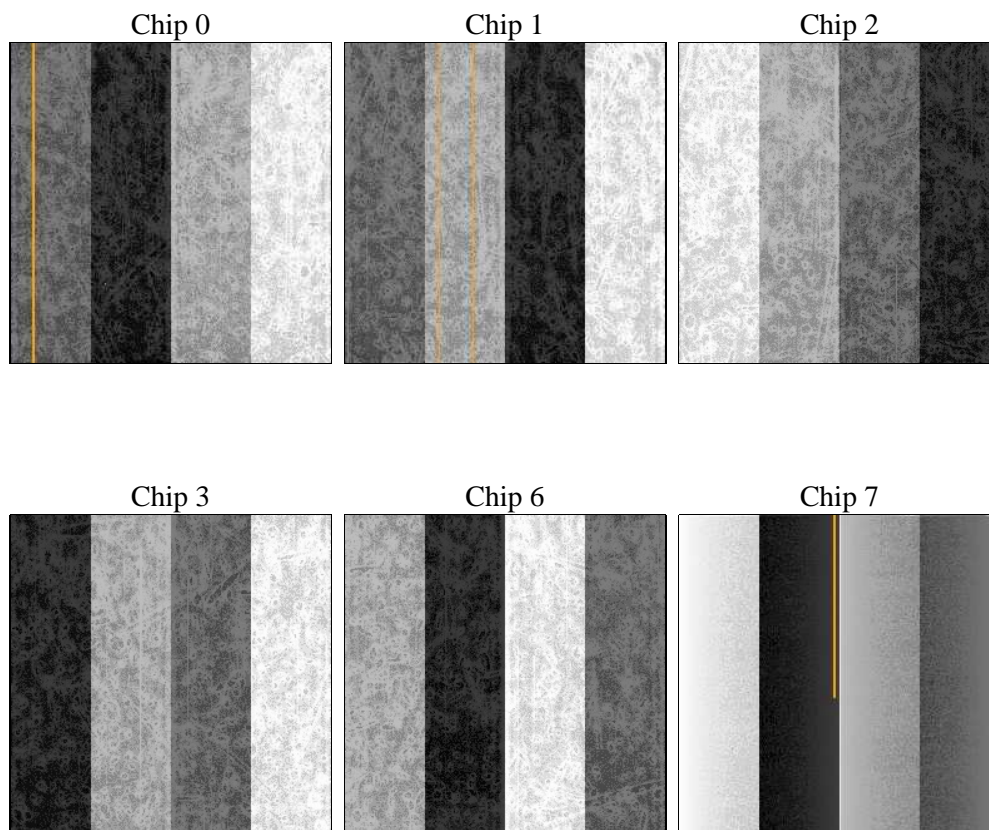
2 OBI

2.1 OBI

2.1.1 Images



2.1.2 Bias



2.1.3 Parameters

obi_num	0	Obi number	sched_exp_time	10000.000000	[s] Scheduled observation exposure time
ascdsver	8.4.4	Processing system revision	ontime	10041.599962652	Sum of GTIs [s]
caldsver	4.4.9	 	ontime0	10041.599962652	Sum of GTIs [s]
date	2012-04-30T13:26:20	Date and time of file creation	ontime1	10041.599962652	Sum of GTIs [s]
revision	2	Processing version of data	ontime2	10041.599962652	Sum of GTIs [s]
			ontime3	10041.599962652	Sum of GTIs [s]
			ontime6	10041.599962652	Sum of GTIs [s]
			ontime7	10041.599962652	Sum of GTIs [s]
			l1events	454229	Number of level 1 events

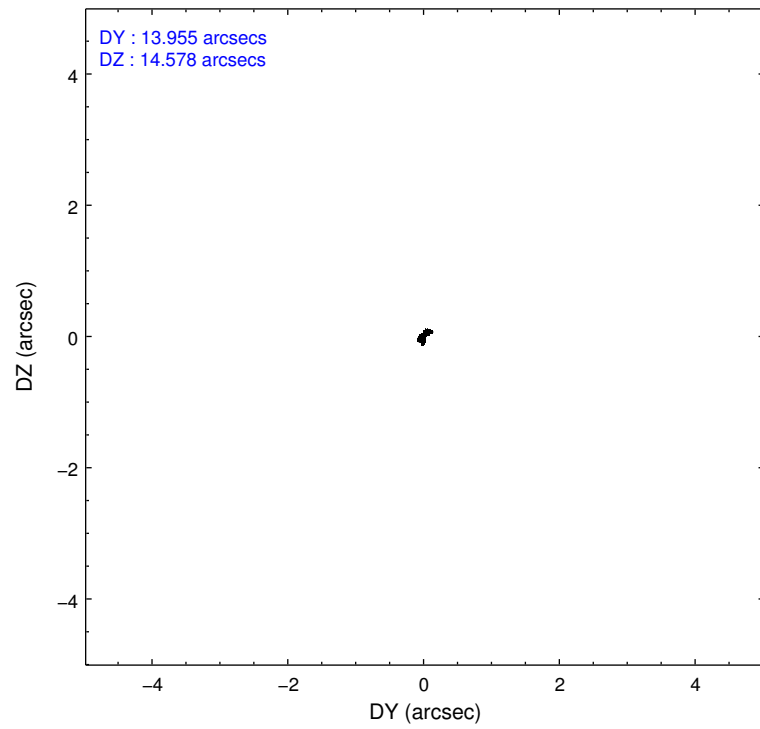
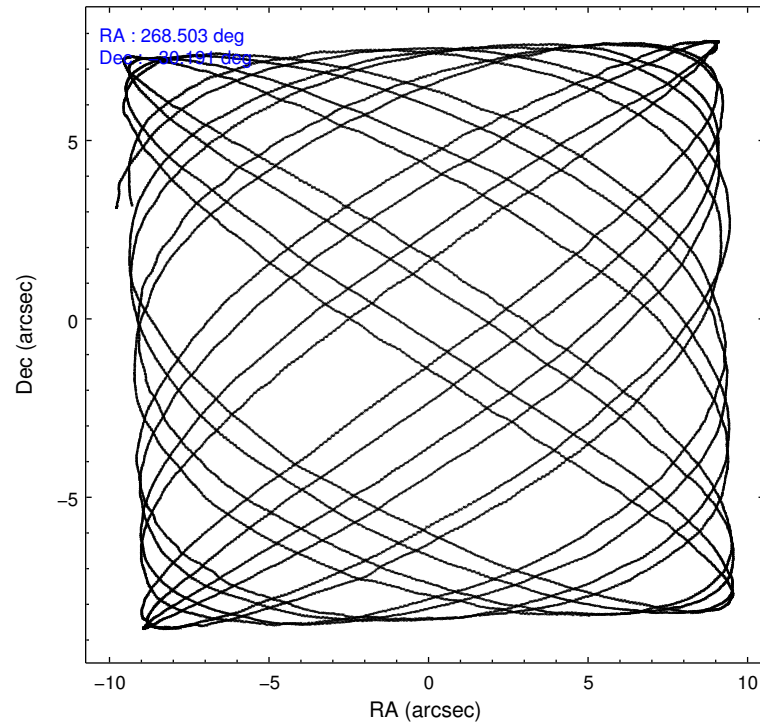
2.1.4 Events

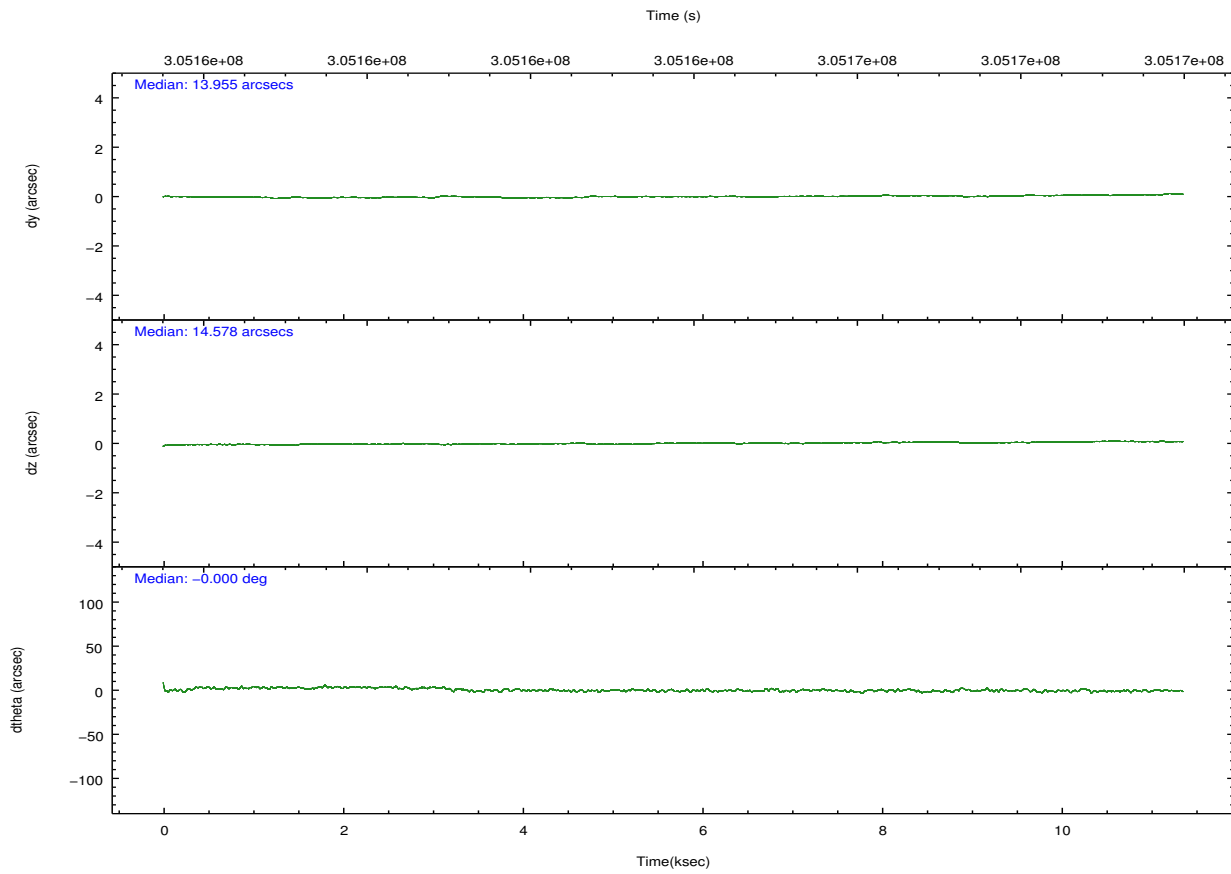
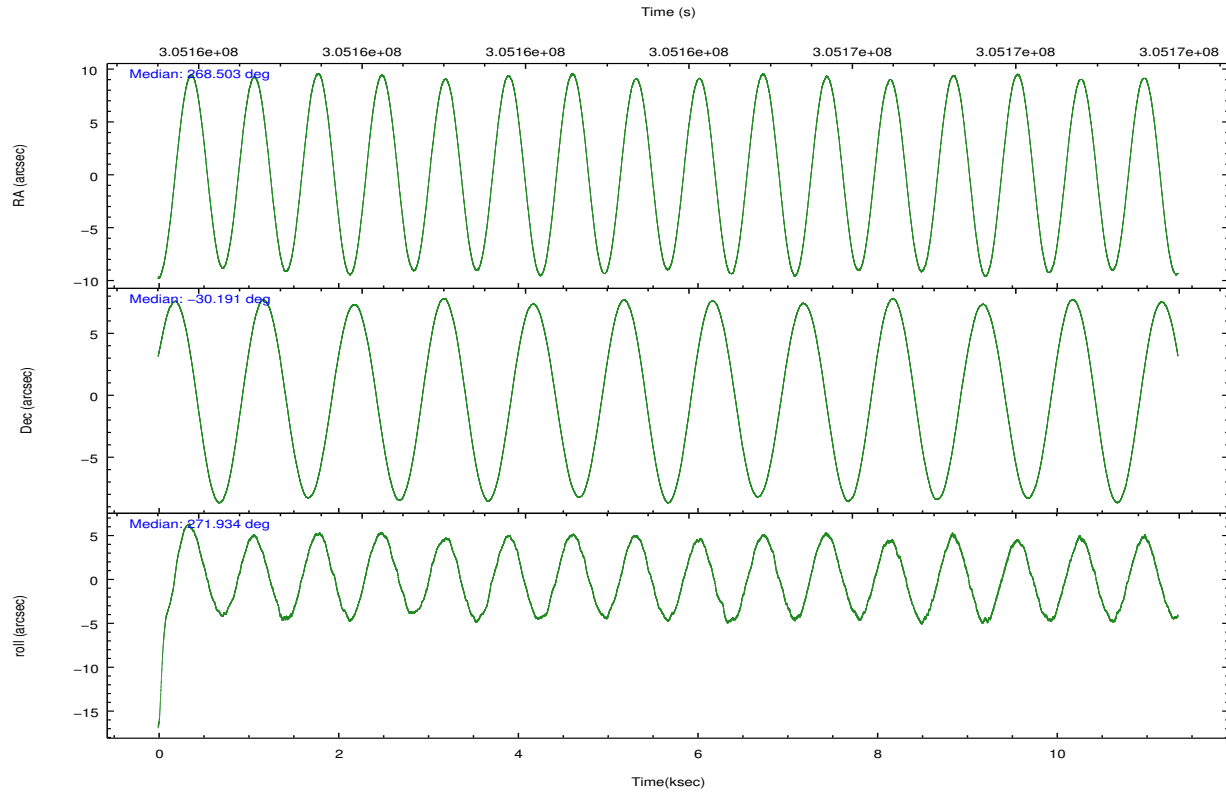
	ccd 0	ccd 1	ccd 2	ccd 3	ccd 6	ccd 7		ccd 0	ccd 1	ccd 2	ccd 3	ccd 6	ccd 7
level 1 events	72436	70188	81639	76560	79548	73858	grade 0 events	4116	4311	4078	4485	3854	4234
rejected events	63417	60751	72722	67478	70516	35981		5%	6%	4%	5%	4%	5%
rejected %	87%	86%	89%	88%	88%	48%	grade 1 events	49	29	74	52	33	136
								0%	0%	0%	0%	0%	0%
							grade 2 events	1892	1862	1897	1674	1877	8128
								2%	2%	2%	2%	2%	11%
							grade 3 events	879	918	797	821	820	3674
								1%	1%	0%	1%	1%	4%
							grade 4 events	794	853	831	768	905	3580
								1%	1%	1%	1%	1%	4%
							grade 5 events	2140	2507	2068	2556	2613	7566
								2%	3%	2%	3%	3%	10%
							grade 6 events	1339	1498	1315	1338	1578	18268
								1%	2%	1%	1%	1%	24%
							grade 7 events	61227	58210	70579	64866	67868	28272
								84%	82%	86%	84%	85%	38%

2.2 Compared Parameters

Parameter	Planned	Actual	Parameter	Planned	Actual
Instrument	ACIS	ACIS	Obspar format version number	7	7
Detector	ACIS-012367	ACIS-012367	Obspar file type	PREDICTED	ACTUAL
Grating	NONE	NONE	Obspar update status	NONE	UPDATED
Data mode	FAINT	FAINT	CCD I0 on	Y	Y
Observation mode	POINTING	POINTING	CCD I1 on	Y	Y
[deg] Pointing RA	268.486147	268.5030785163599	CCD I2 on	Y	Y
[deg] Pointing Dec	-30.167687	-30.19090903169053	CCD I3 on	Y	Y
[deg] Pointing Roll	271.718483	271.9356846044896	CCD S0 on	N	N
[mm] SIM focus pos	-0.782348	-0.7809083437167272	CCD S1 on	N	N
[mm] SIM defocus	0	0.001439871863259334	CCD S2 on	O1	Y
[mm] SIM translation stage pos	-233.592463	-233.5874344608287	CCD S3 on	O2	Y
[mm] SIM translation stage offset	0	-0.005018542100998502	CCD S4 on	N	N
[s] Observation start time (MET)	305159423.184000	305157832.12726	CCD S5 on	N	N
Observation start date	2007-09-02T22:29:18	2007-09-02T22:03:52	Number of optional ACIS chips dropped	0	0
[s] Observation end time (MET)	305169423.184000	305170619.00287	On-chip summing requested	N	N
Observation end date	2007-09-03T01:15:58	2007-09-03T01:36:59	Subarray requested	NONE	NONE
Read mode	TIMED	TIMED	Alternating exposures requested	N	N
			[s] Primary exposure time	0.000000	3.2

2.3 Aspect



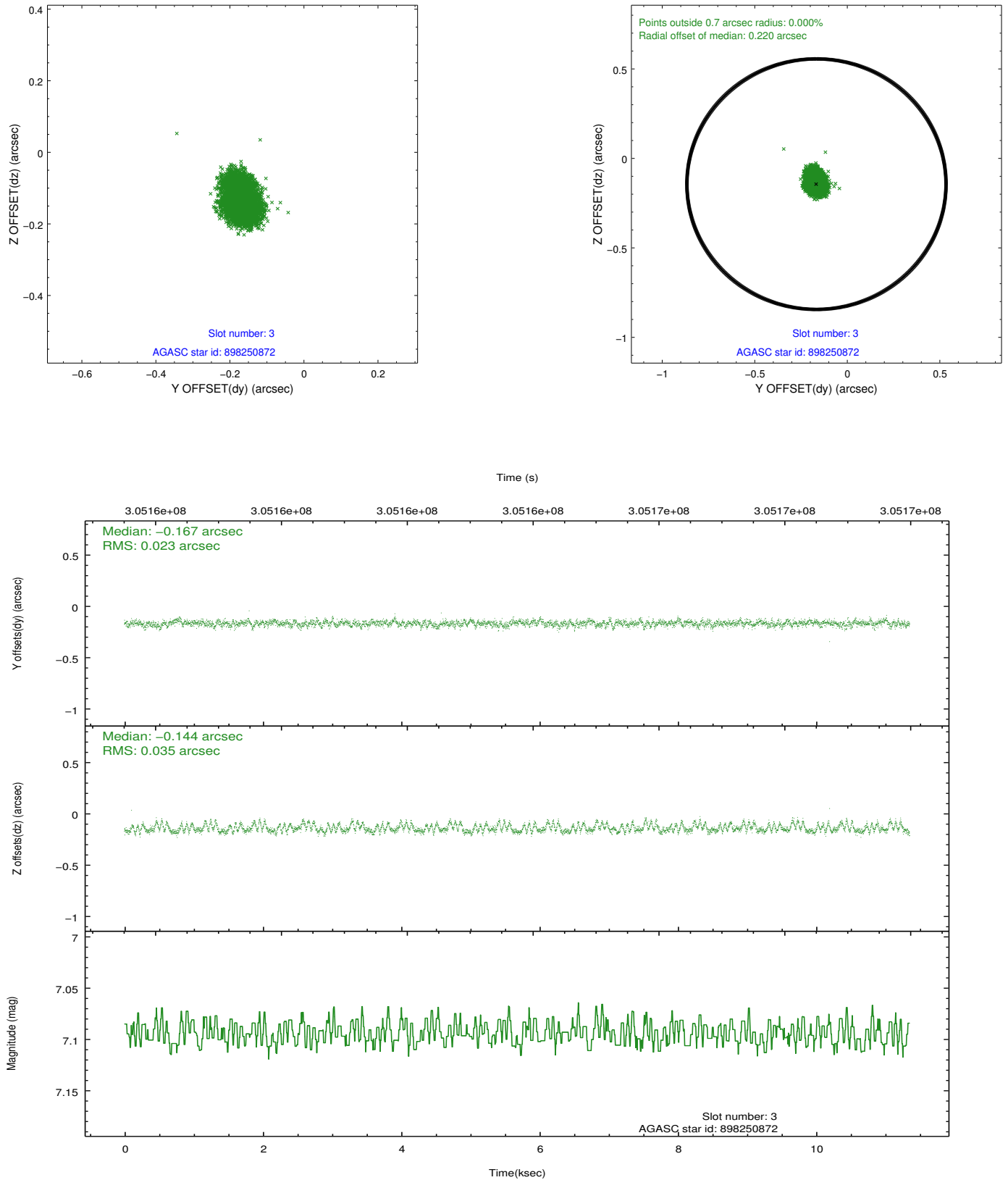


Slot Statistics

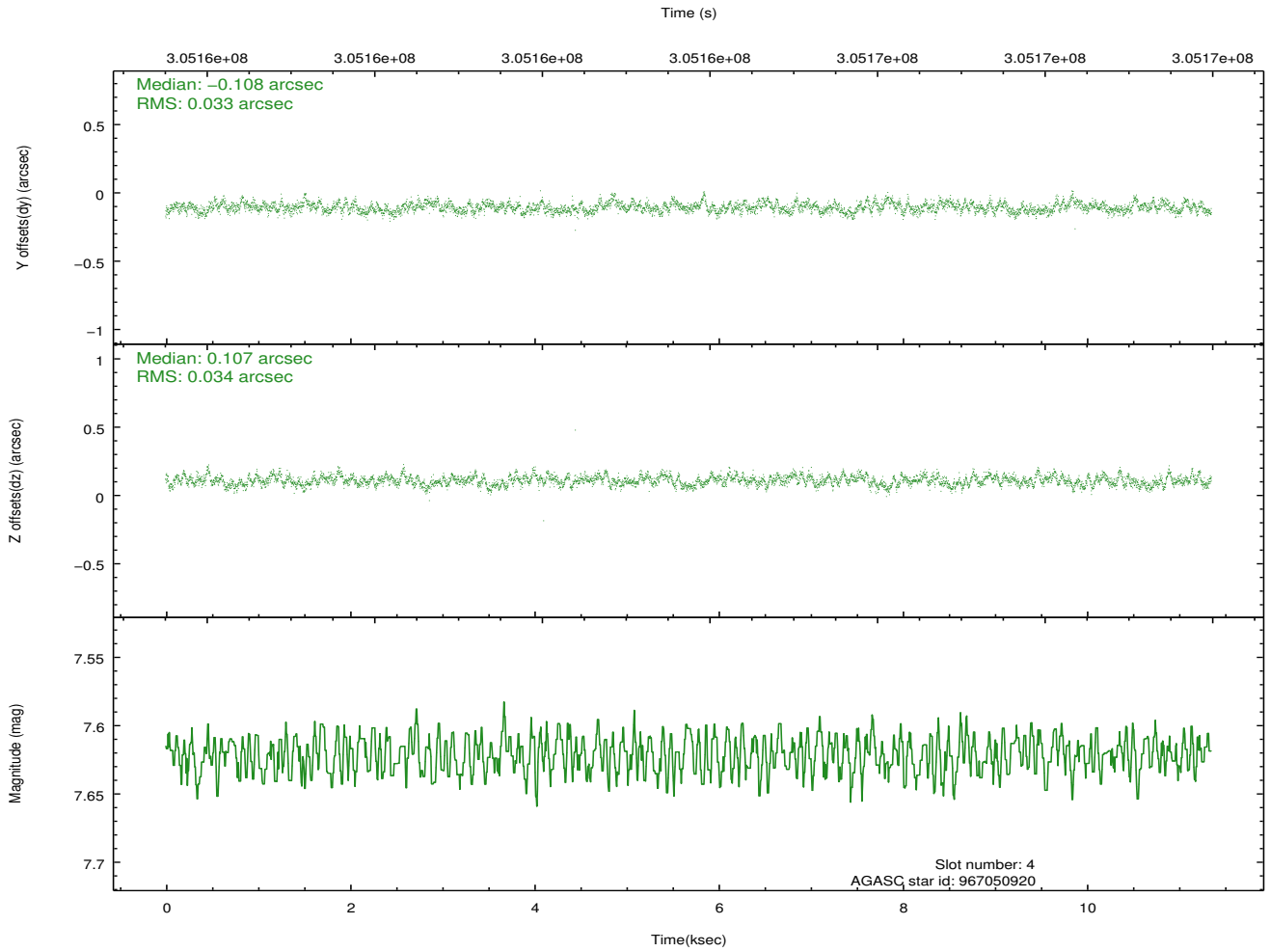
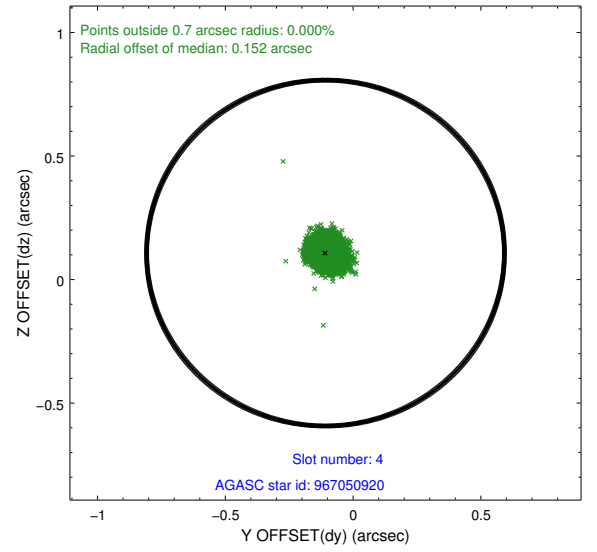
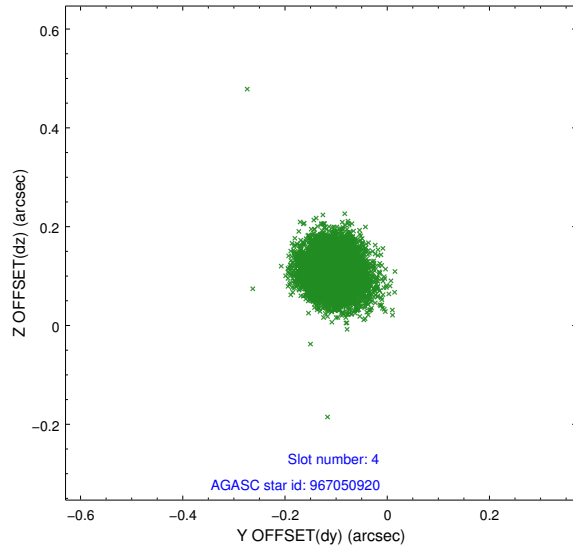
slot	status	id	mag	n_pts	med_dy	med_dz	dr1	dr2	ra	dec	mean_y	mean_z
0	FID	ACIS-I-1	7.23	2770	-0.033	0.071	0.015	0.030	0.000000	0.000000	925.47	-838.12
1	FID	ACIS-I-2	7.13	2770	-0.179	-0.098	0.008	0.014	0.000000	0.000000	-768.52	-844.90
2	FID	ACIS-I-4	7.15	2770	0.113	0.093	0.011	0.023	0.000000	0.000000	2145.36	1061.42
3	GUIDE	898250872	7.09	5540	-0.167	-0.144	0.044	0.075	268.026303	-29.632040	-1967.45	-1380.74
4	GUIDE	967050920	7.62	5540	-0.108	0.107	0.051	0.081	268.870727	-30.021750	-487.23	1213.80
5	GUIDE	967060720	7.54	5538	0.027	-0.017	0.051	0.079	268.816262	-30.601019	1591.82	975.95
6	GUIDE	898248800	8.21	5538	-0.052	-0.150	0.056	0.092	267.977609	-29.931731	-892.42	-1560.42
7	GUIDE	967054592	7.91	5534	0.298	0.201	0.064	0.103	268.937317	-30.571672	1498.97	1354.15

2.4 Star Slots

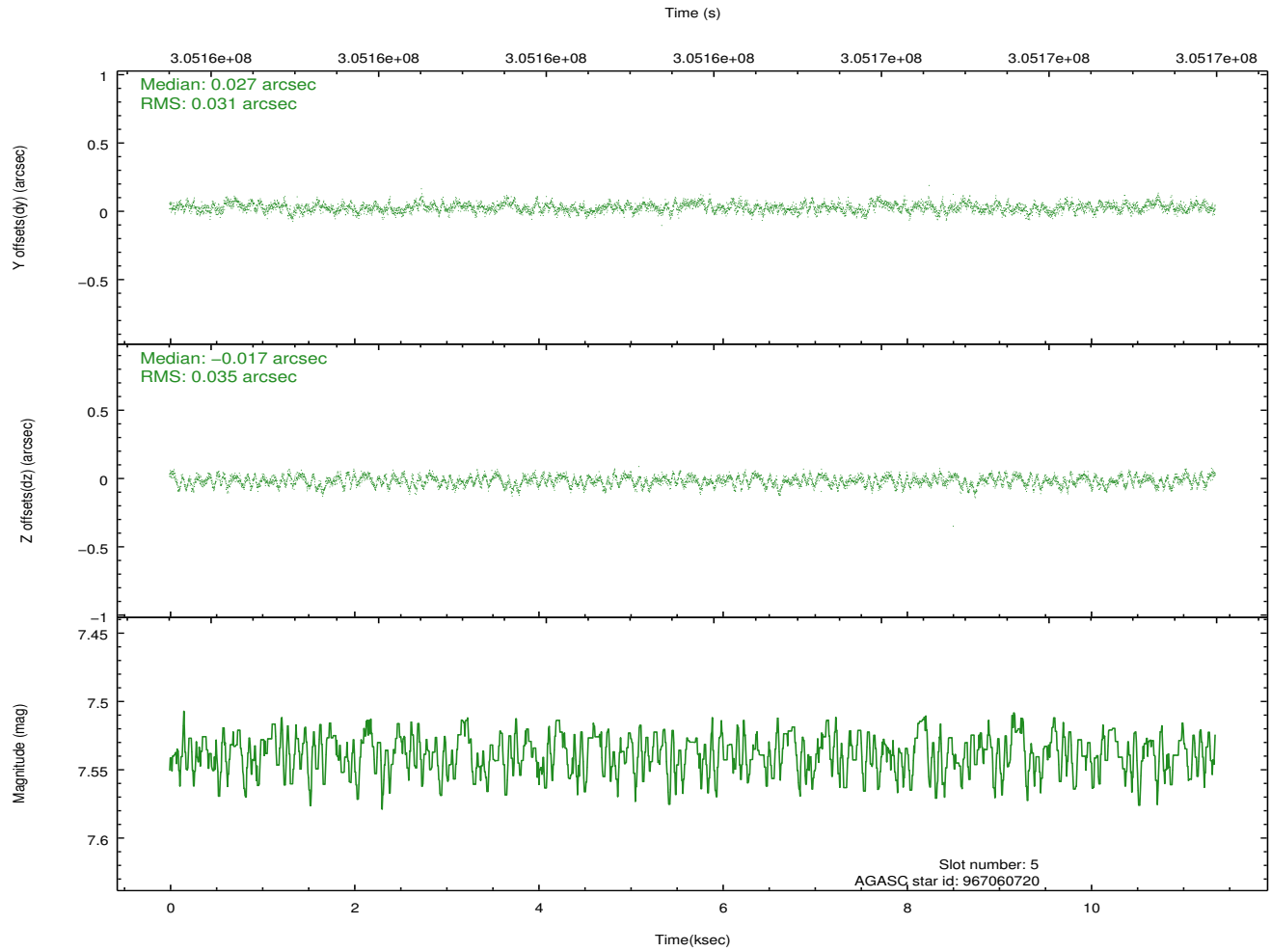
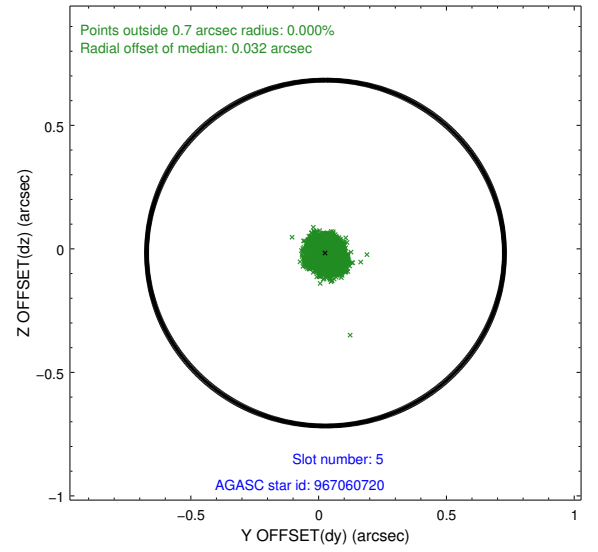
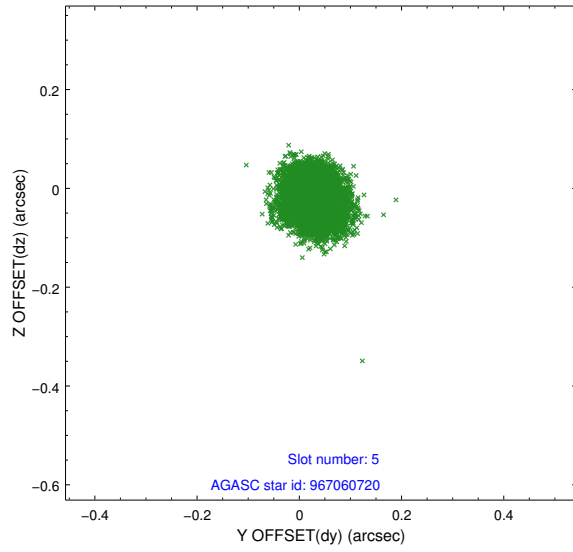
2.4.1 Slot 3



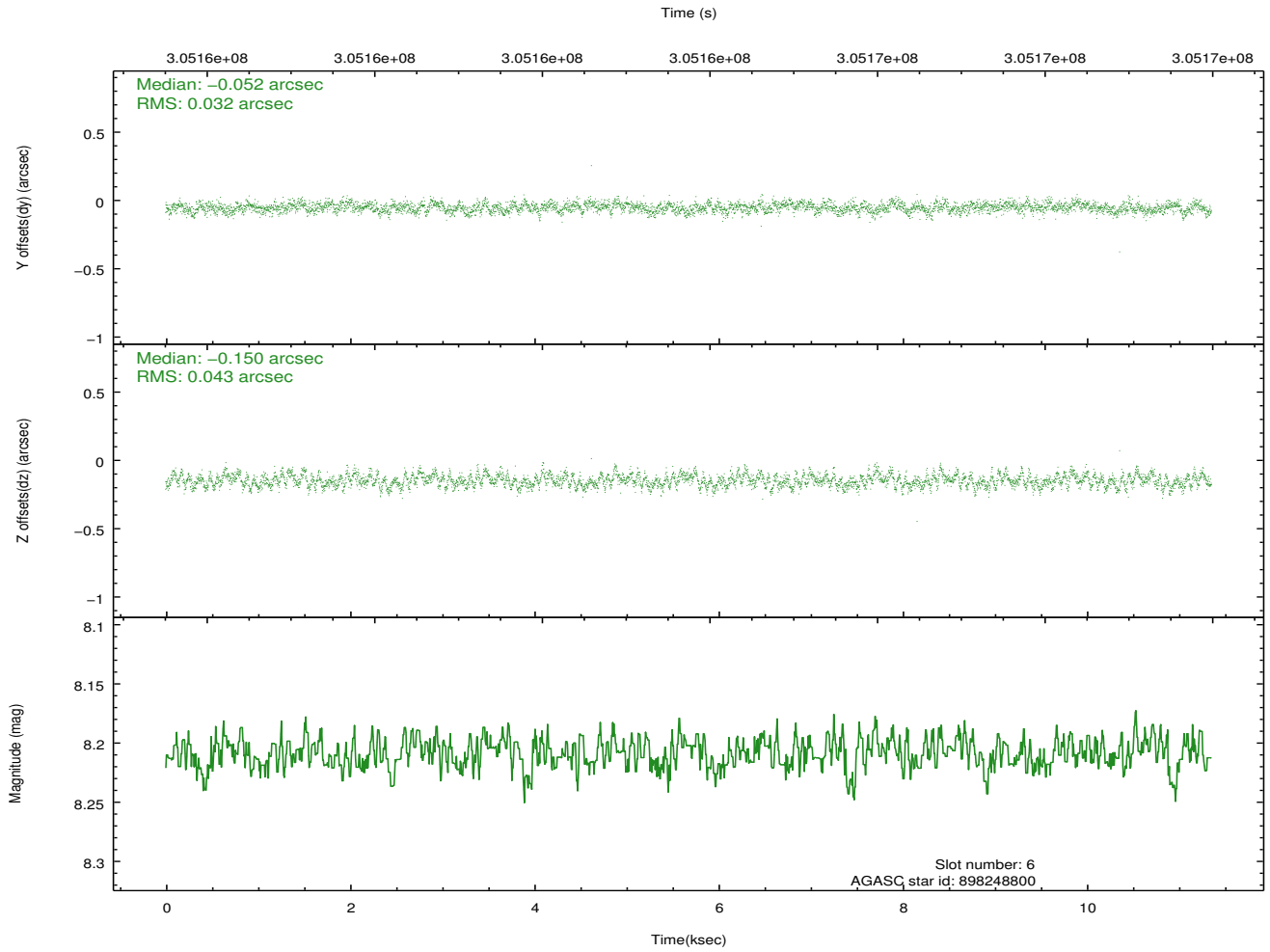
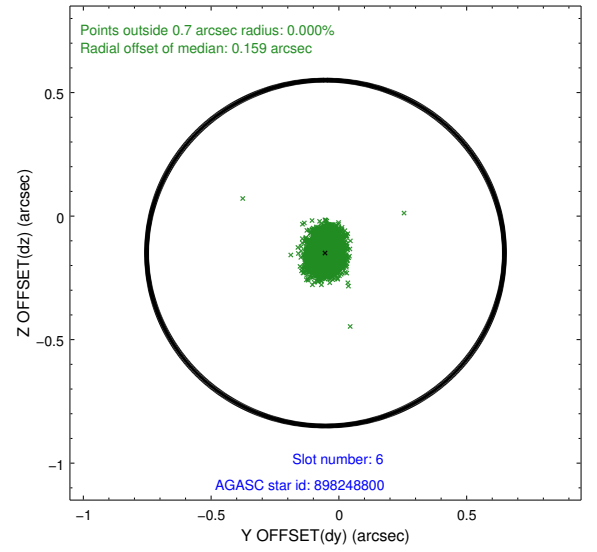
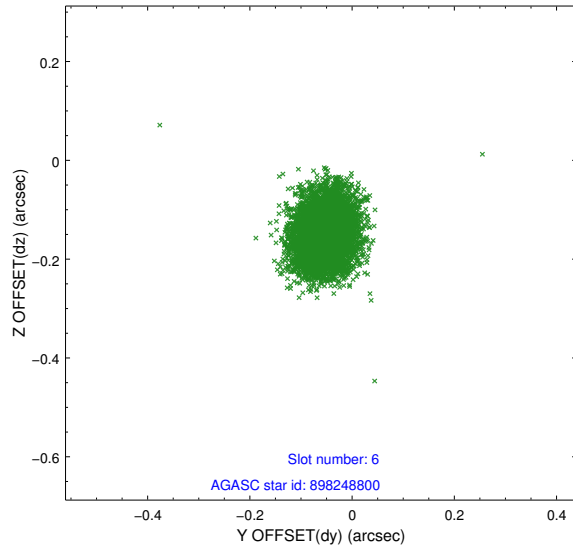
2.4.2 Slot 4



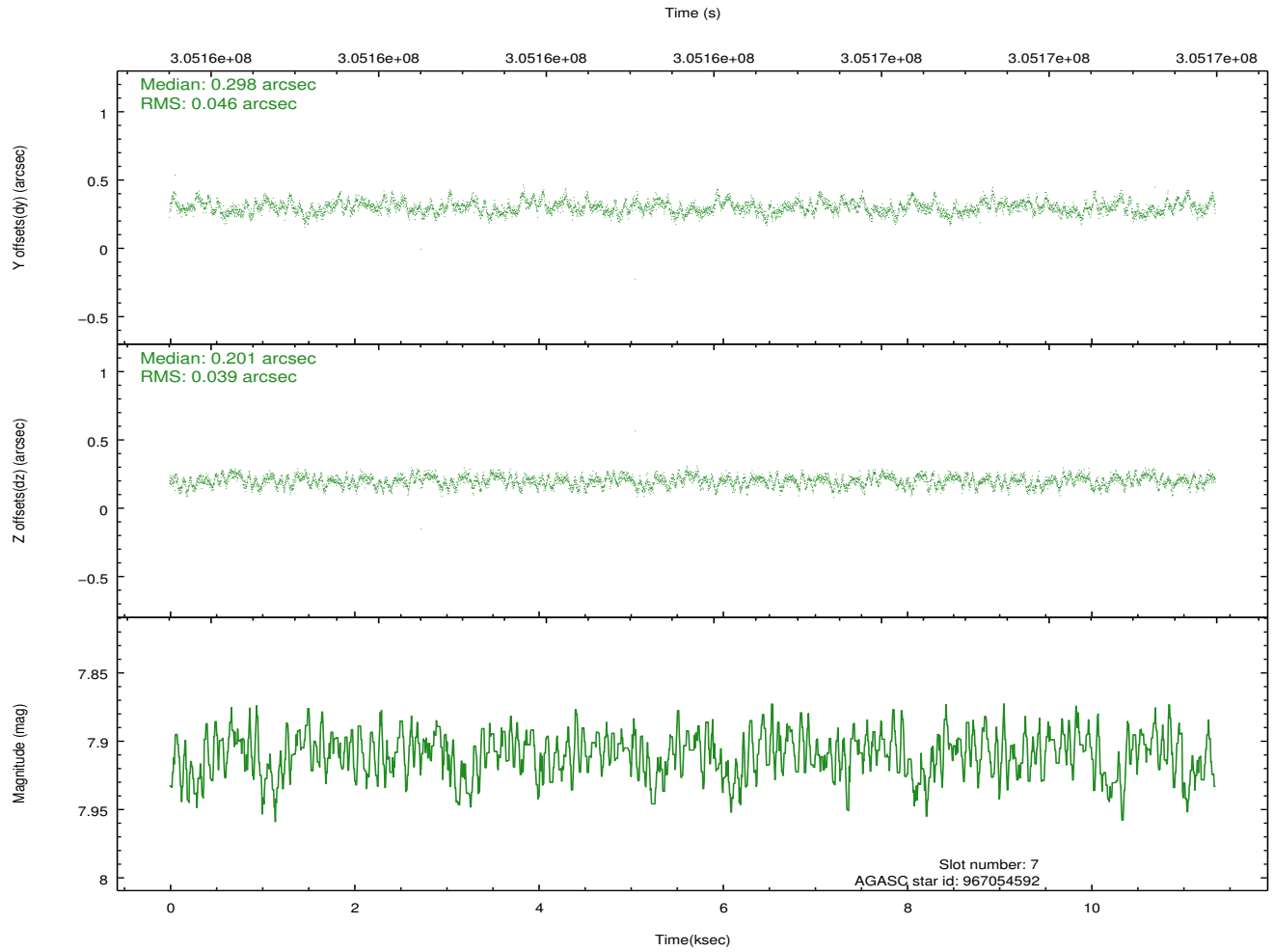
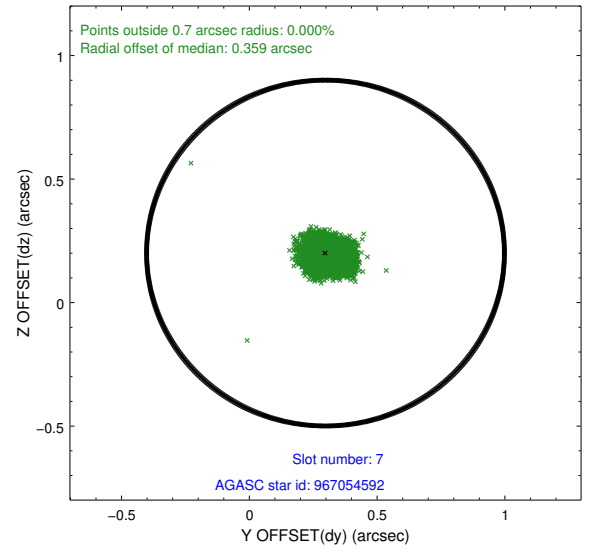
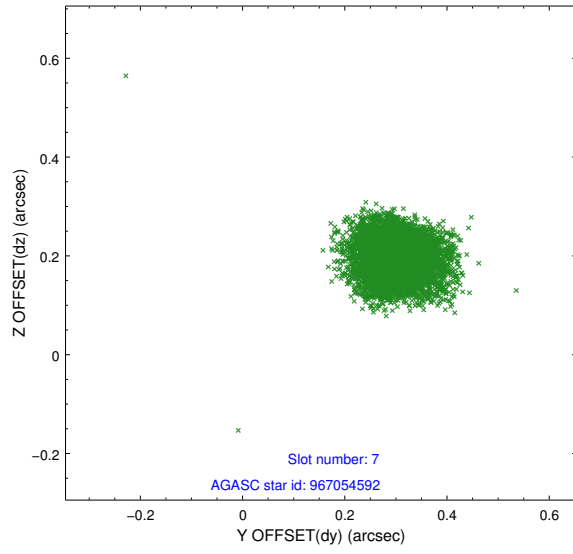
2.4.3 Slot 5



2.4.4 Slot 6

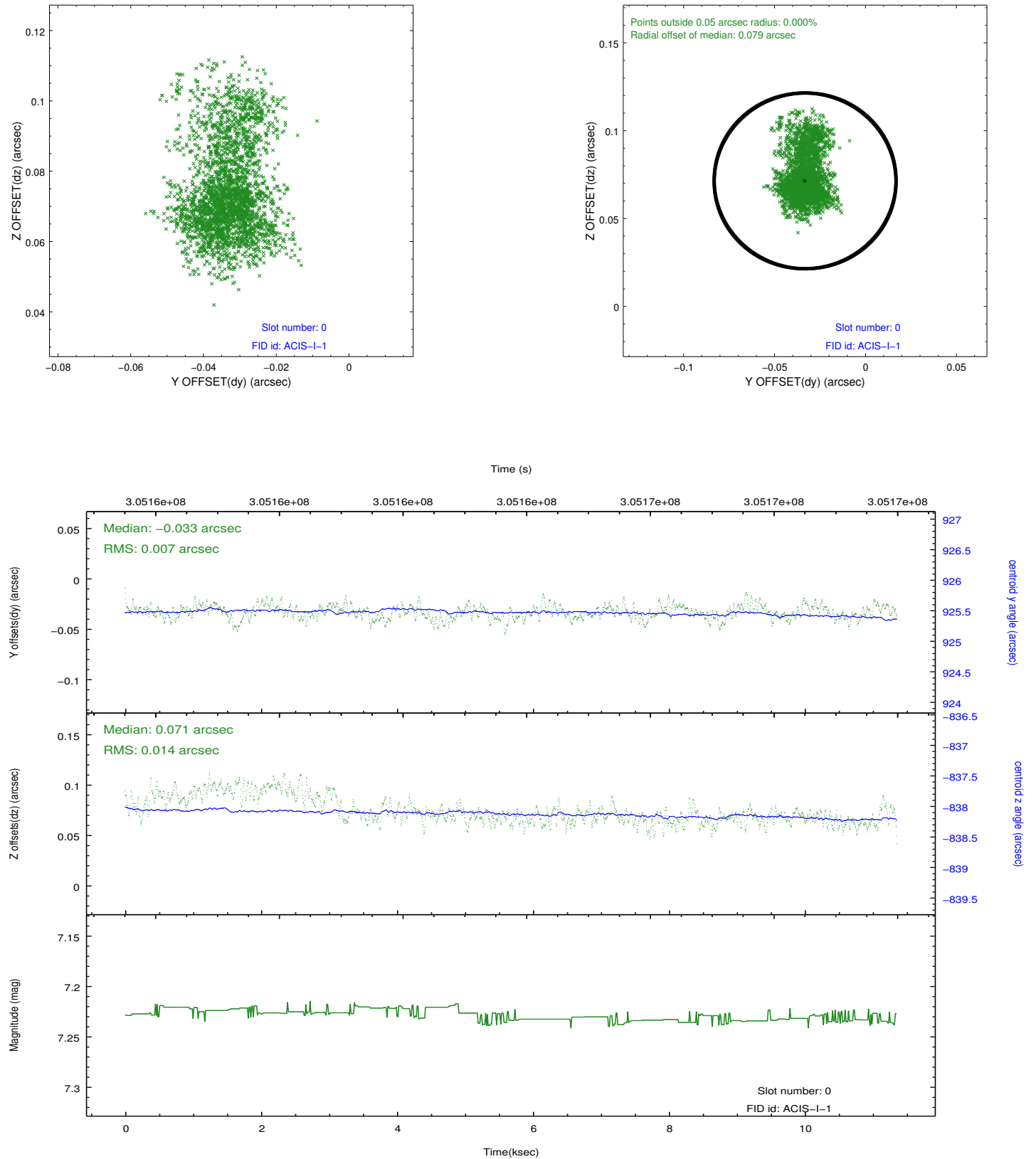


2.4.5 Slot 7

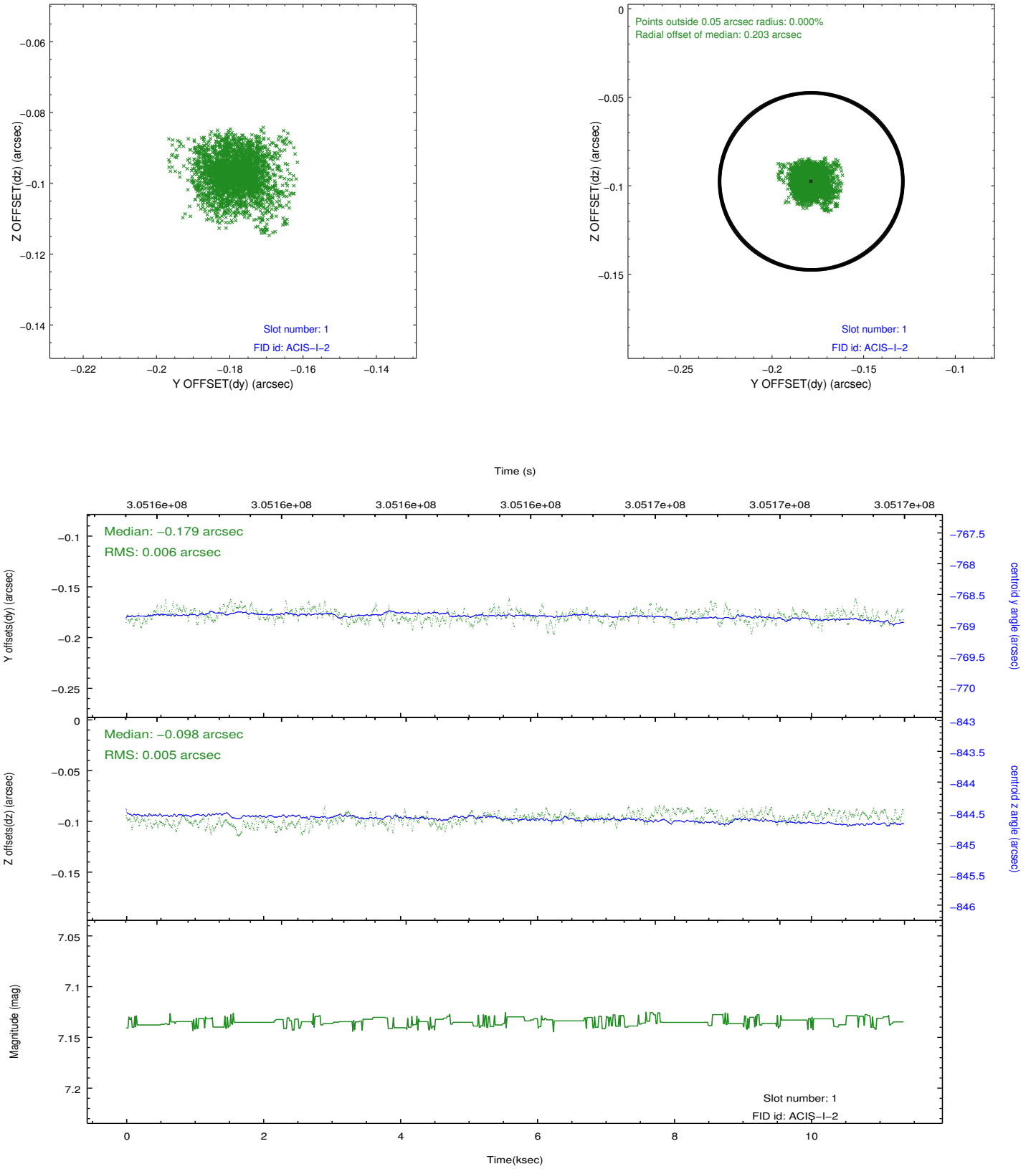


2.5 FID Slots

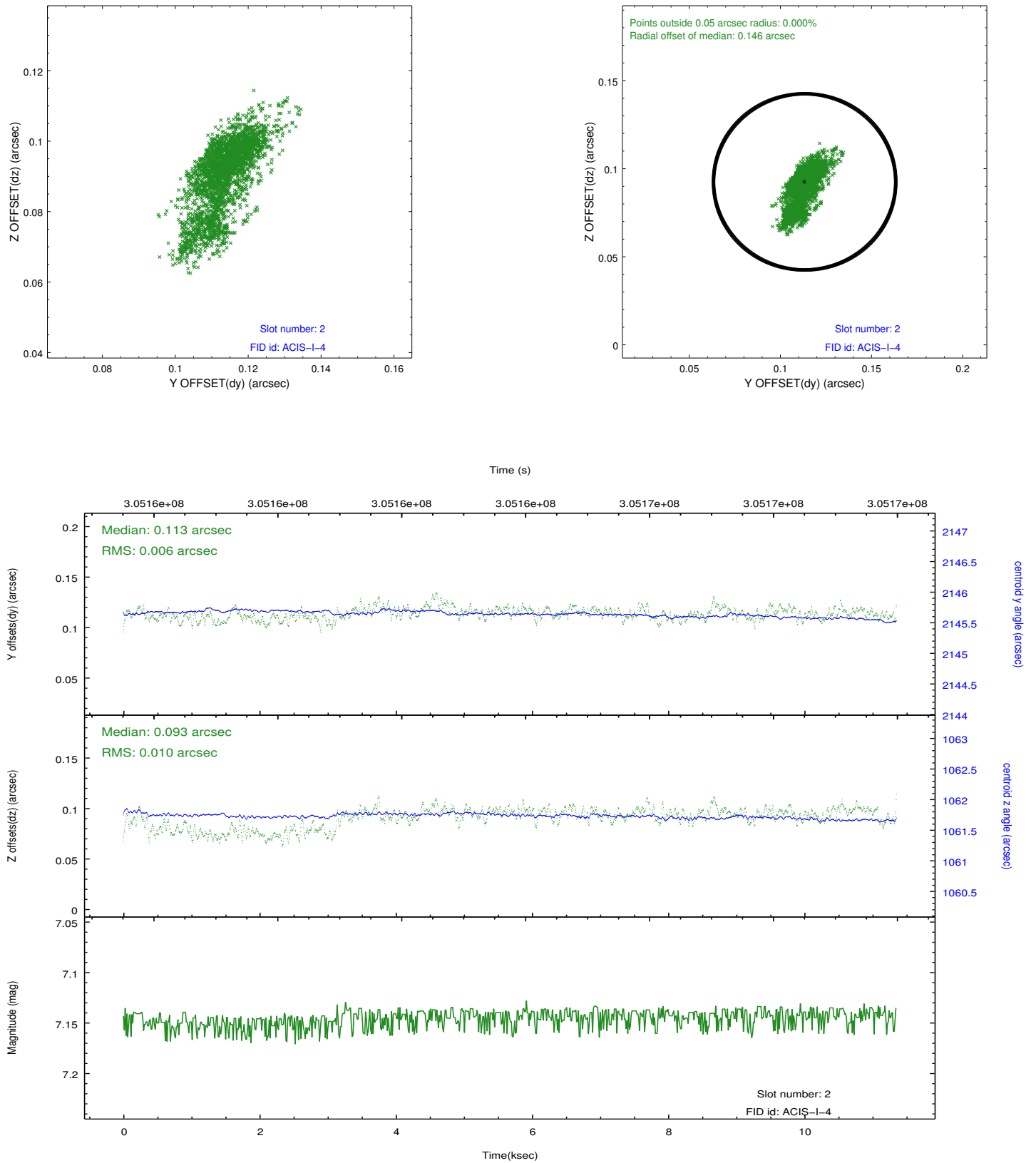
2.5.1 Slot 0



2.5.2 Slot 1



2.5.3 Slot 2



A Summary

A.1 Status

V&V Scientist	Jen Lauer
V&V Date (YYYY-MM-DD)	2012.05.02
V&V Edition	1
V&V Disposition and Status	OK
V&V Charge Time	10.0415999

A.2 Comments