

V&V Reference Report

L2 ASCDS Version : 8.4.4

Observation 7609 - L2 Version 2
Chandra X-Ray Center

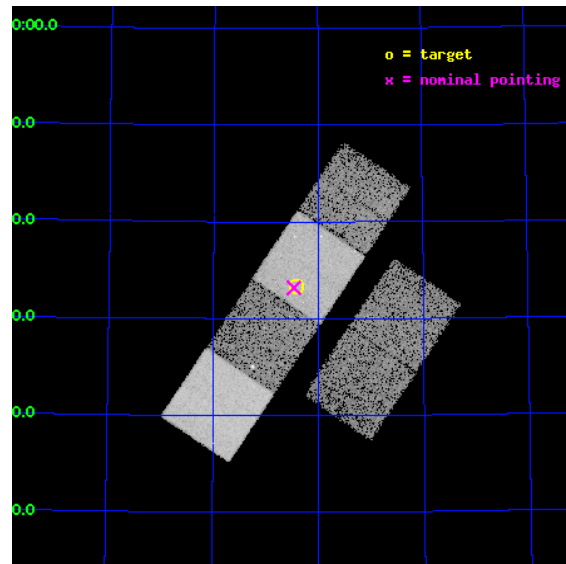
L2 Processing Date : Apr 30 2012

Contents

1	Front	2
2	OBI	3
2.1	OBI	3
2.1.1	Images	3
2.1.2	Bias	3
2.1.3	Parameters	4
2.1.4	Events	4
2.2	Compared Parameters	5
2.3	Aspect	6
2.4	Star Slots	9
2.4.1	Slot 3	9
2.4.2	Slot 4	10
2.4.3	Slot 5	11
2.4.4	Slot 6	12
2.4.5	Slot 7	13
2.5	FID Slots	14
2.5.1	Slot 0	14
2.5.2	Slot 1	15
2.5.3	Slot 2	16
A	Summary	17
A.1	Status	17
A.2	Comments	17

1 Front

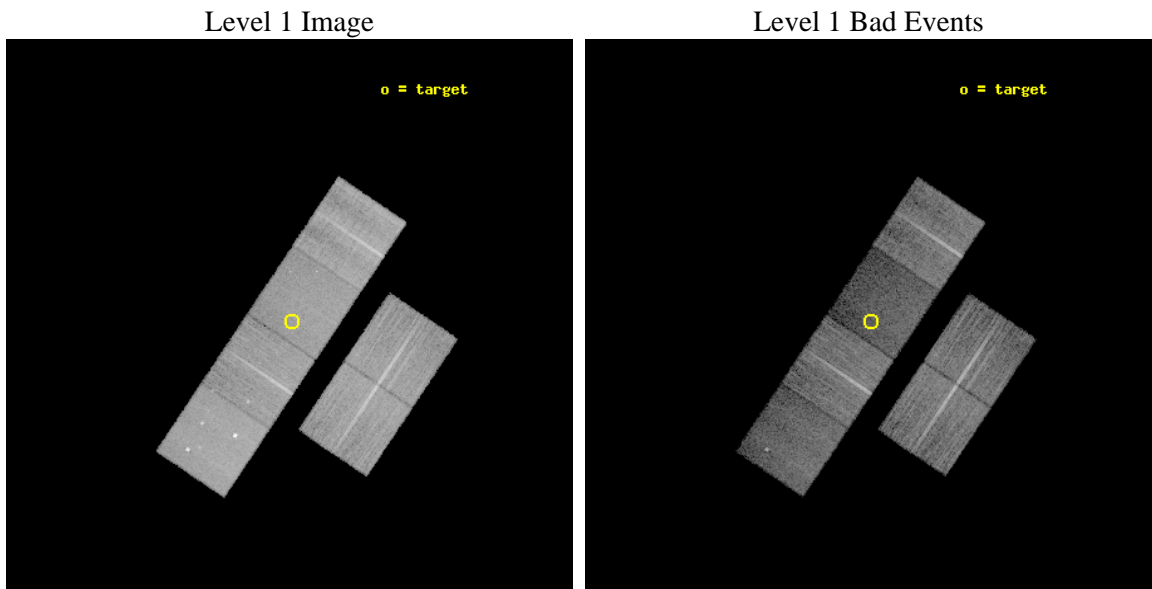
seq_num	500739	Sequence number
obs_id	7609	Observation id
title	CHANDRA OBSERVATIONS OF YOUNG ENERGETIC SUPERNOVAE	Proposal title
observer	Prof. David Pooley	Principal investigator
object	SN 2005bx	Source name
dtcycle	0	
cycle	P	events from which exps? Prim/Second/Both
ra_targ	207.604167	Observer's specified target RA [deg]
dec_targ	68.555389	Observer's specified target Dec [deg]
ra_nom	207.61621576441	Nominal RA [deg]
dec_nom	68.553382165675	Nominal Dec [deg]
roll_nom	303.86928368902	Nominal Roll [deg]
revision	2	Processing version of data
ontime	13119.631218135	Sum of GTIs [s]
livetime	12953.502547958	Livetime [s]
ontime2	13122.872158587	Sum of GTIs [s]
ontime3	13139.077089965	Sum of GTIs [s]
ontime5	13119.631248295	Sum of GTIs [s]
ontime6	13135.836079895	Sum of GTIs [s]
ontime7	13119.631218135	Sum of GTIs [s]
ontime8	13132.595049739	Sum of GTIs [s]
l2events	136629	Number of level 2 events



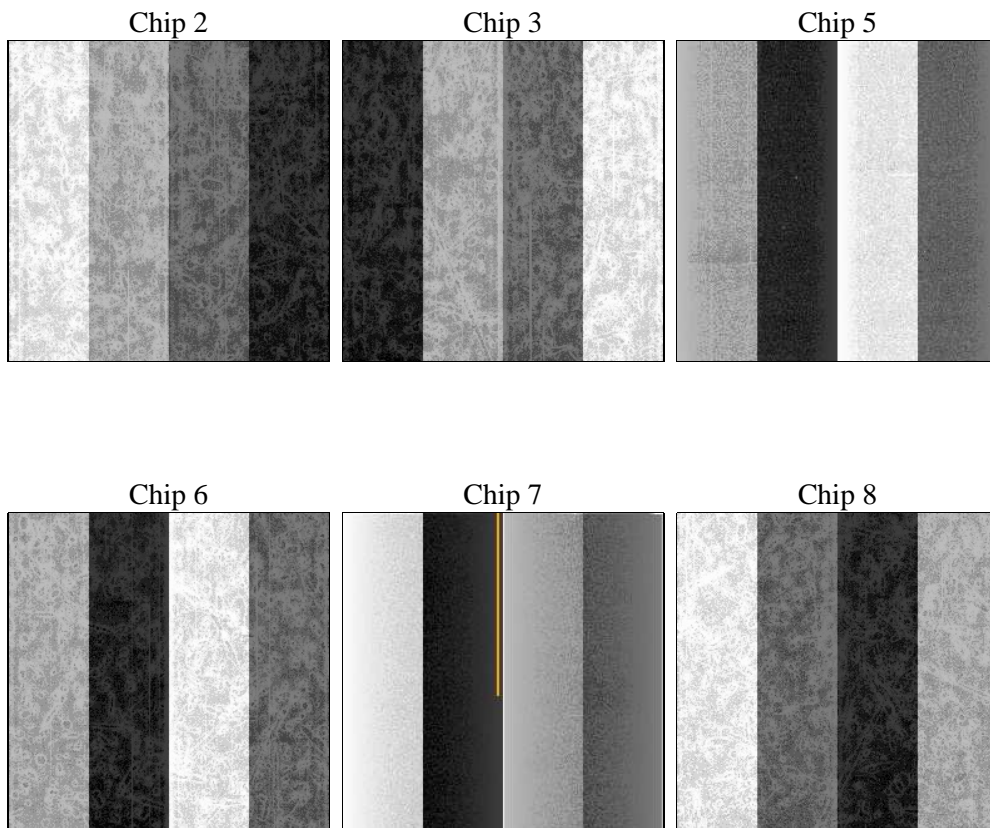
2 OBI

2.1 OBI

2.1.1 Images



2.1.2 Bias



2.1.3 Parameters

obi_num	0	Obi number	sched_exp_time	13000.000000	[s] Scheduled observation exposure time
ascdsver	8.4.4	Processing system revision	ontime	13119.631218135	Sum of GTIs [s]
caldsver	4.4.9	 	ontime2	13122.872158587	Sum of GTIs [s]
date	2012-04-30T02:33:26	Date and time of file creation	ontime3	13139.077089965	Sum of GTIs [s]
revision	2	Processing version of data	ontime5	13119.631248295	Sum of GTIs [s]
			ontime6	13135.836079895	Sum of GTIs [s]
			ontime7	13119.631218135	Sum of GTIs [s]
			ontime8	13132.595049739	Sum of GTIs [s]
			l1events	651147	Number of level 1 events

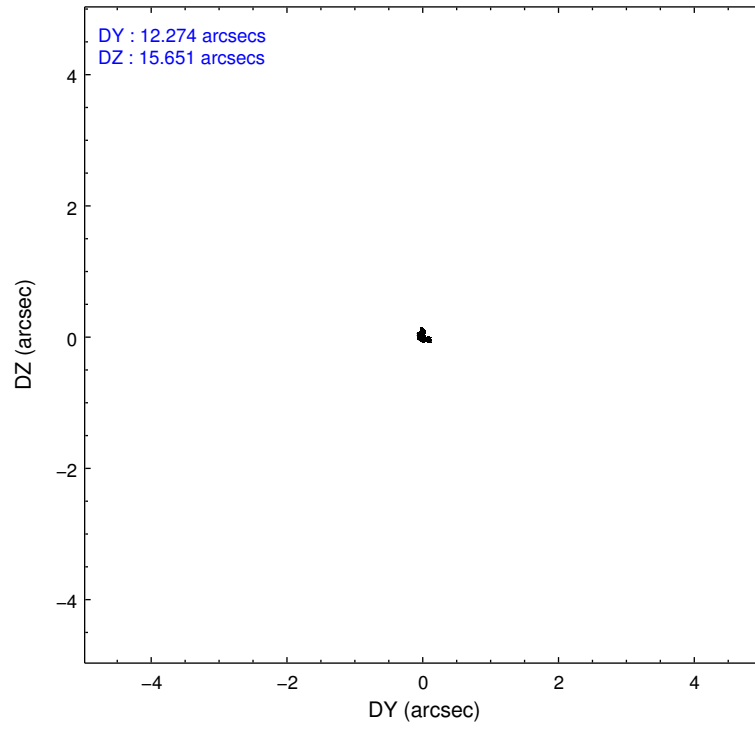
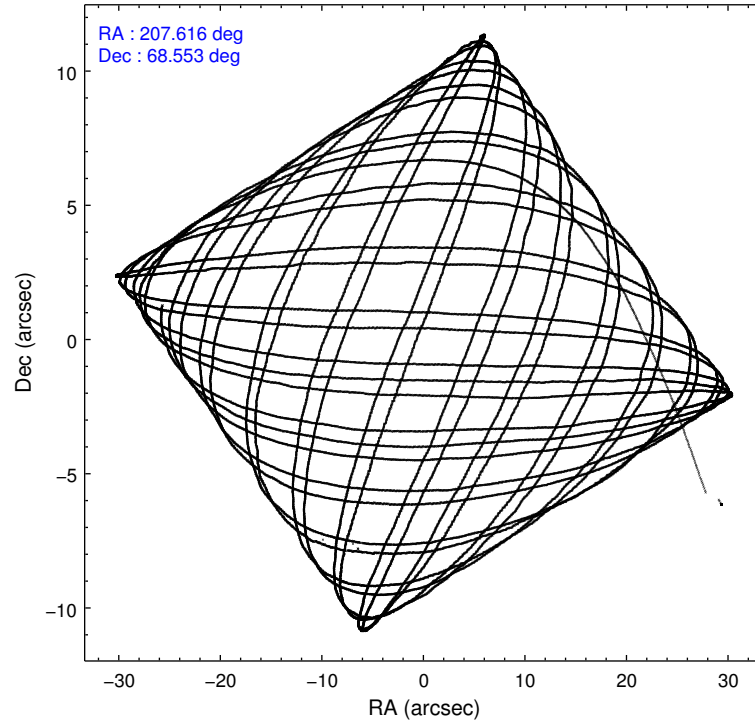
2.1.4 Events

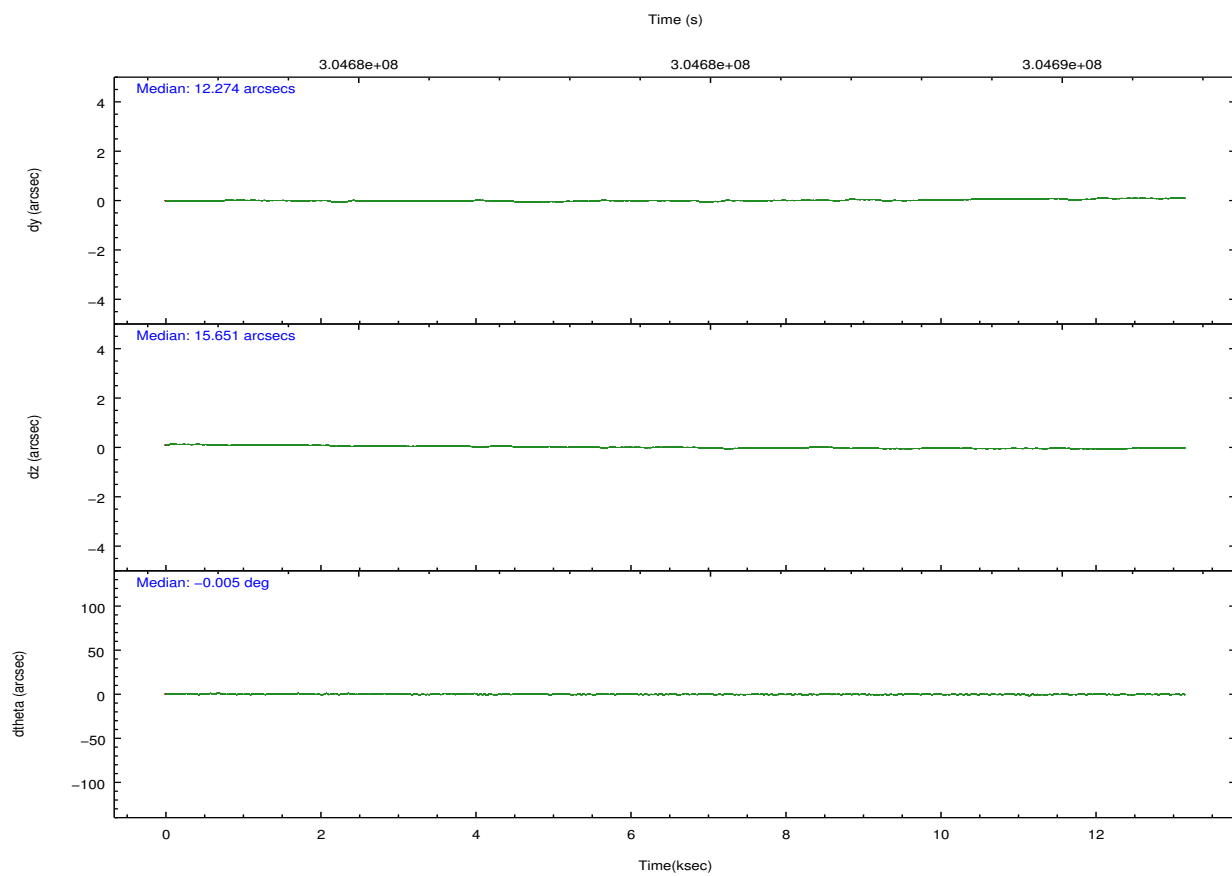
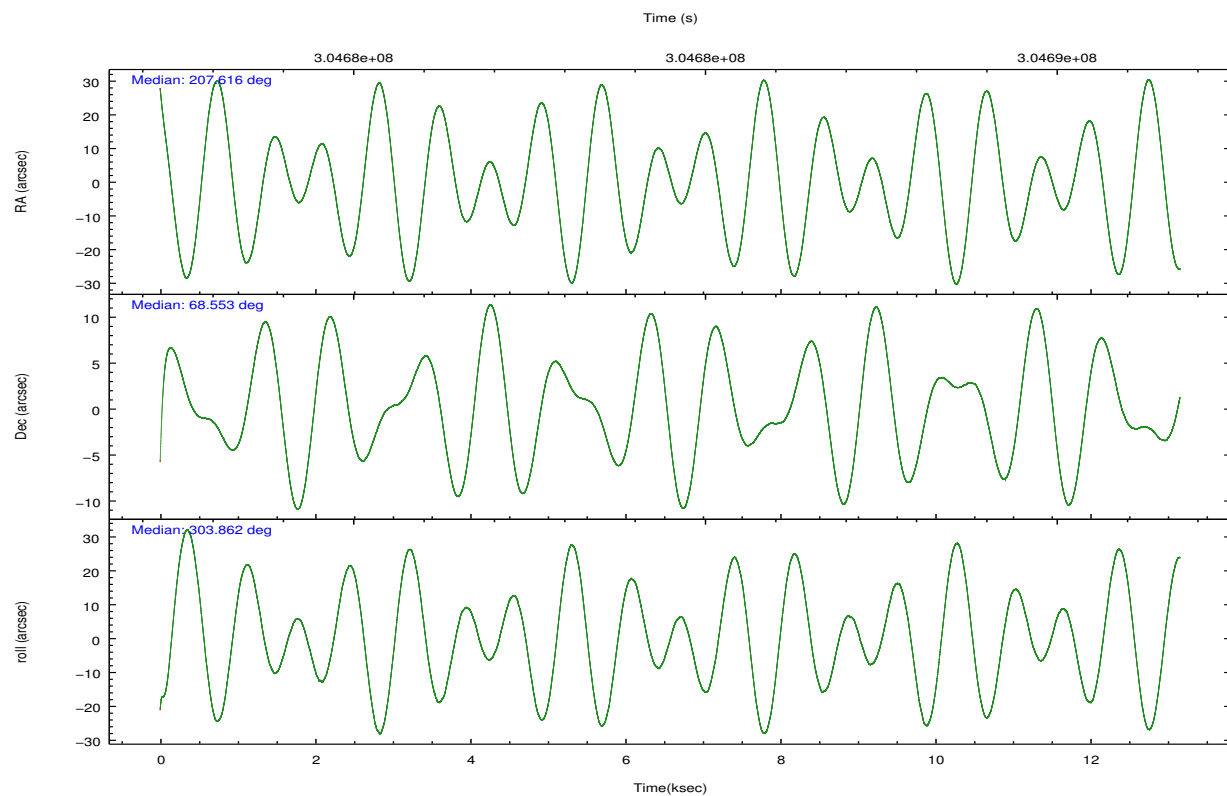
	ccd 2	ccd 3	ccd 5	ccd 6	ccd 7	ccd 8		ccd 2	ccd 3	ccd 5	ccd 6	ccd 7	ccd 8
level 1 events	108860	97953	127419	100384	93796	122735	grade 0 events	3408	3297	9505	3953	4639	8735
rejected events	99610	89140	60529	90087	48431	92788		3%	3%	7%	3%	4%	7%
rejected %	91%	91%	47%	89%	51%	75%	grade 1 events	61	55	279	50	180	98
								0%	0%	0%	0%	0%	0%
							grade 2 events	2379	1882	20352	2368	9875	7199
								2%	1%	15%	2%	10%	5%
							grade 3 events	984	1027	3056	1054	4467	3393
								0%	1%	2%	1%	4%	2%
							grade 4 events	990	1017	2643	1083	4327	3070
								0%	1%	2%	1%	4%	2%
							grade 5 events	2710	3256	10330	3313	9969	5077
								2%	3%	8%	3%	10%	4%
							grade 6 events	1720	1796	32930	2090	23085	8182
								1%	1%	25%	2%	24%	6%
							grade 7 events	96608	85623	48324	86473	37254	86981
								88%	87%	37%	86%	39%	70%

2.2 Compared Parameters

Parameter	Planned	Actual	Parameter	Planned	Actual
Instrument	ACIS	ACIS	Obspar format version number	7	7
Detector	ACIS-235678	ACIS-235678	Obspar file type	PREDICTED	ACTUAL
Grating	NONE	NONE	Obspar update status	NONE	UPDATED
Data mode	VFAINT	VFAINT	CCD I0 on	N	N
Observation mode	POINTING	POINTING	CCD I1 on	N	N
[deg] Pointing RA	207.548615	207.6162157644094	CCD I2 on	O2	Y
[deg] Pointing Dec	68.565084	68.55338216567488	CCD I3 on	Y	Y
[deg] Pointing Roll	303.775566	303.8692836890189	CCD S0 on	N	N
[mm] SIM focus pos	-0.684267	-0.6828225247311905	CCD S1 on	O1	Y
[mm] SIM defocus	0	0.001444936568705701	CCD S2 on	Y	Y
[mm] SIM translation stage pos	-190.132523	-190.1425803651734	CCD S3 on	Y	Y
[mm] SIM translation stage offset	0	0.01005778216563158	CCD S4 on	Y	Y
[s] Observation start time (MET)	304678067.184000	304676857.51664	CCD S5 on	N	N
Observation start date	2007-08-28T08:46:42	2007-08-28T08:27:37	Number of optional ACIS chips dropped	0	0
[s] Observation end time (MET)	304691067.184000	304691875.30486	On-chip summing requested	N	N
Observation end date	2007-08-28T12:23:22	2007-08-28T12:37:55	Subarray requested	NONE	NONE
Read mode	TIMED	TIMED	Alternating exposures requested	N	N
			[s] Primary exposure time	0.000000	3.2

2.3 Aspect



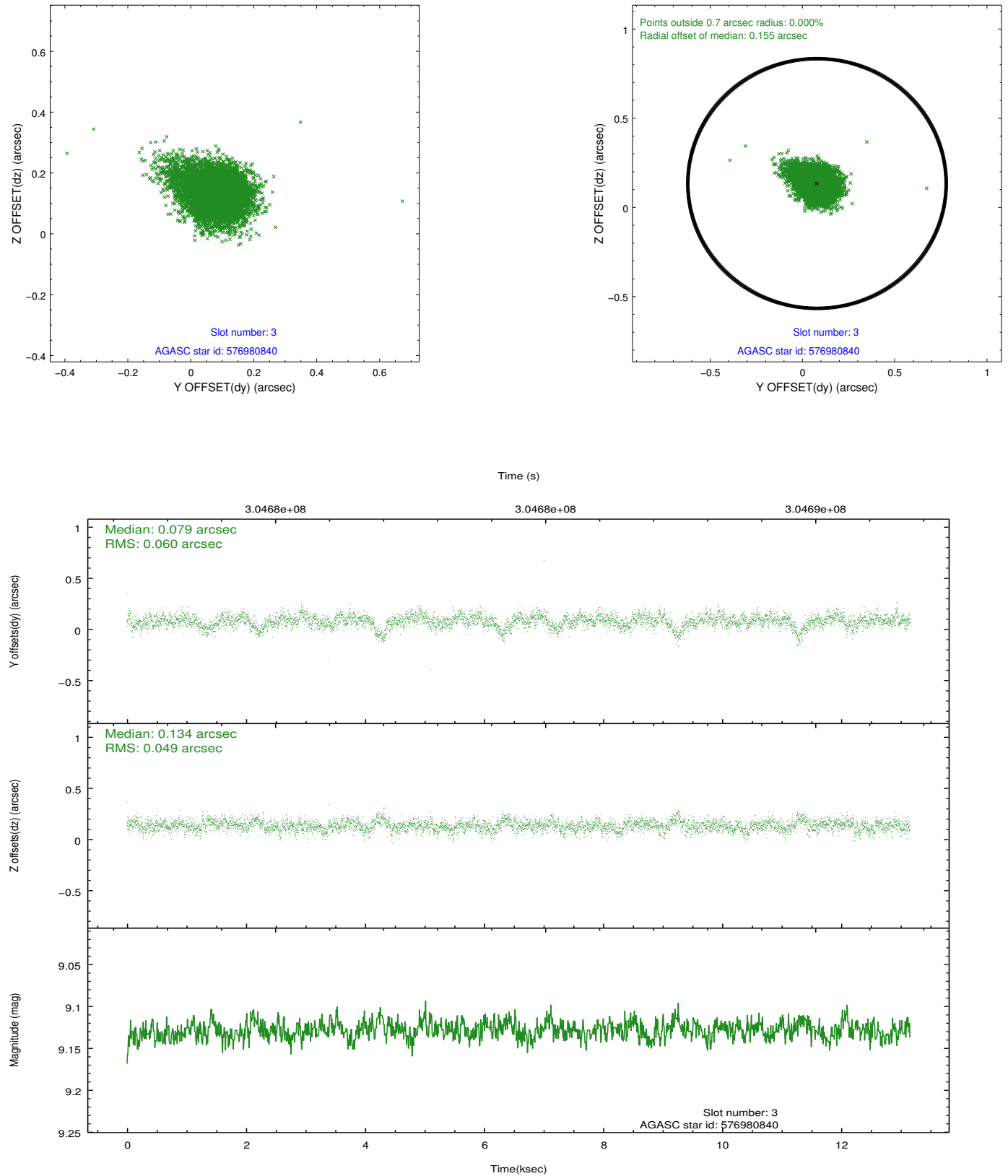


Slot Statistics

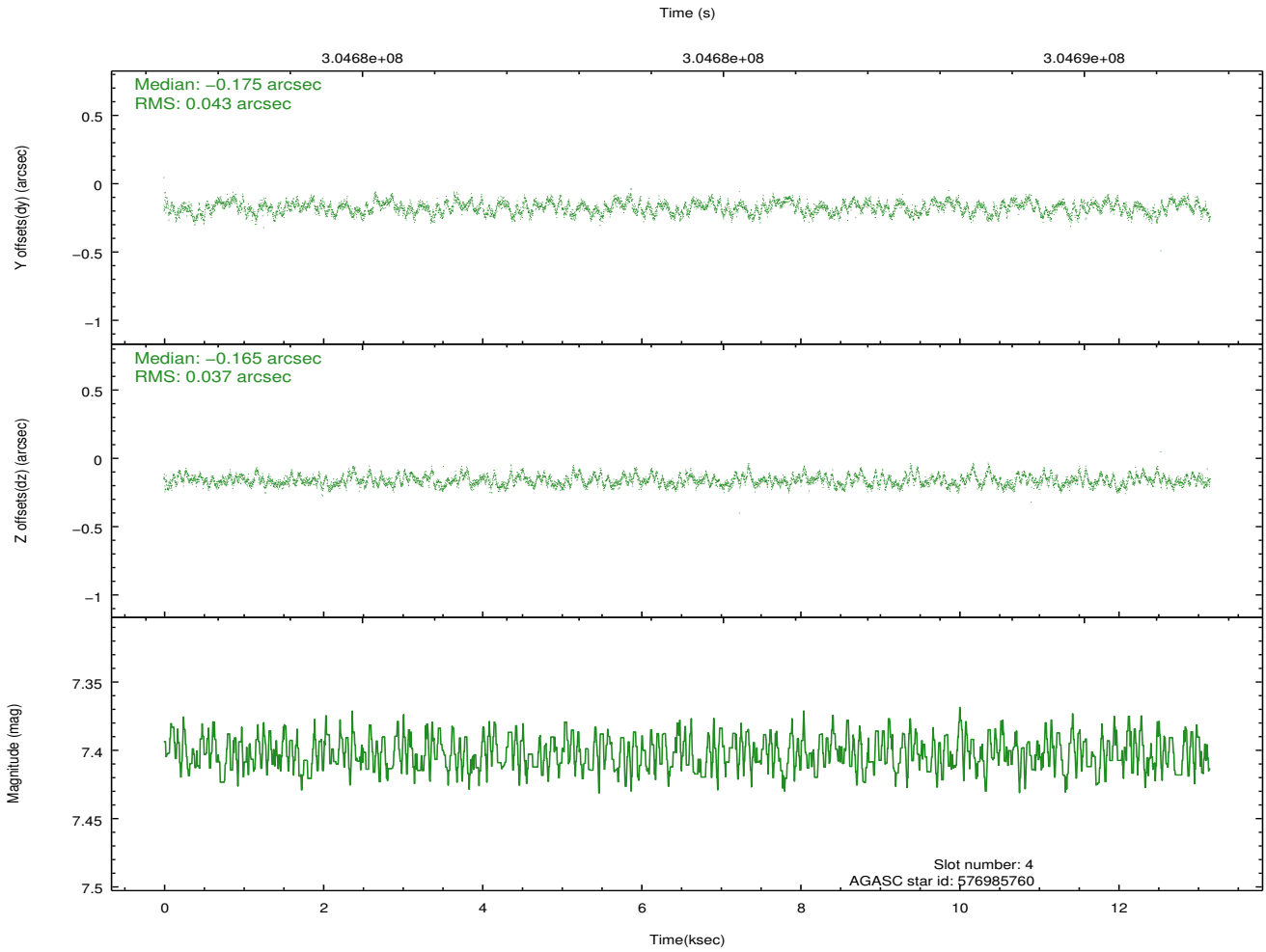
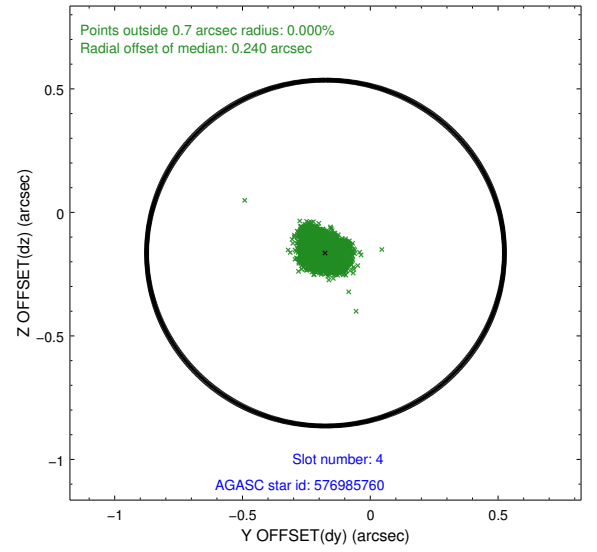
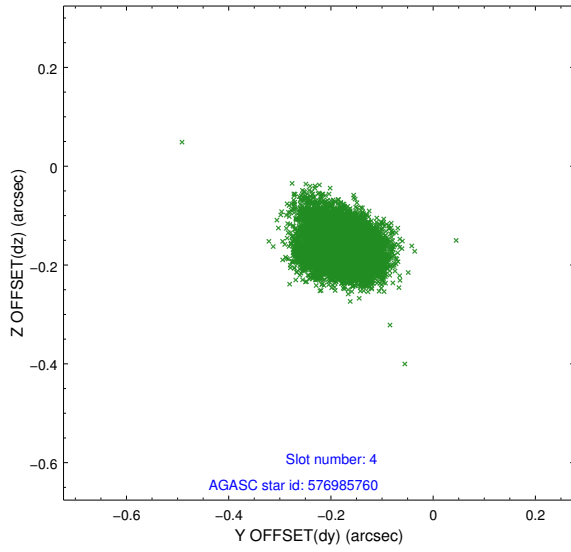
slot	status	id	mag	n_pts	med_dy	med_dz	dr1	dr2	ra	dec	mean_y	mean_z
0	FID	ACIS-S-1	7.18	3197	0.045	-0.080	0.007	0.012	0.000000	0.000000	930.90	-1732.72
1	FID	ACIS-S-4	7.19	3198	0.109	0.039	0.007	0.010	0.000000	0.000000	2148.57	171.19
2	FID	ACIS-S-5	7.22	3199	-0.180	0.054	0.007	0.012	0.000000	0.000000	-1817.73	165.19
3	GUIDE	576980840	9.13	6396	0.079	0.134	0.078	0.138	207.452855	68.181640	1076.46	-874.38
4	GUIDE	576985760	7.40	6405	-0.175	-0.165	0.061	0.096	207.721529	69.153363	-1636.90	1361.54
5	GUIDE	576989584	8.72	6398	-0.083	0.086	0.078	0.123	205.742357	68.734271	-1845.67	-1602.01
6	GUIDE	577120680	9.15	6393	0.252	-0.185	0.081	0.132	208.850719	68.501563	1130.17	1310.76
7	GUIDE	576992152	8.44	6397	-0.068	0.130	0.068	0.108	207.803675	68.326269	902.62	-195.61

2.4 Star Slots

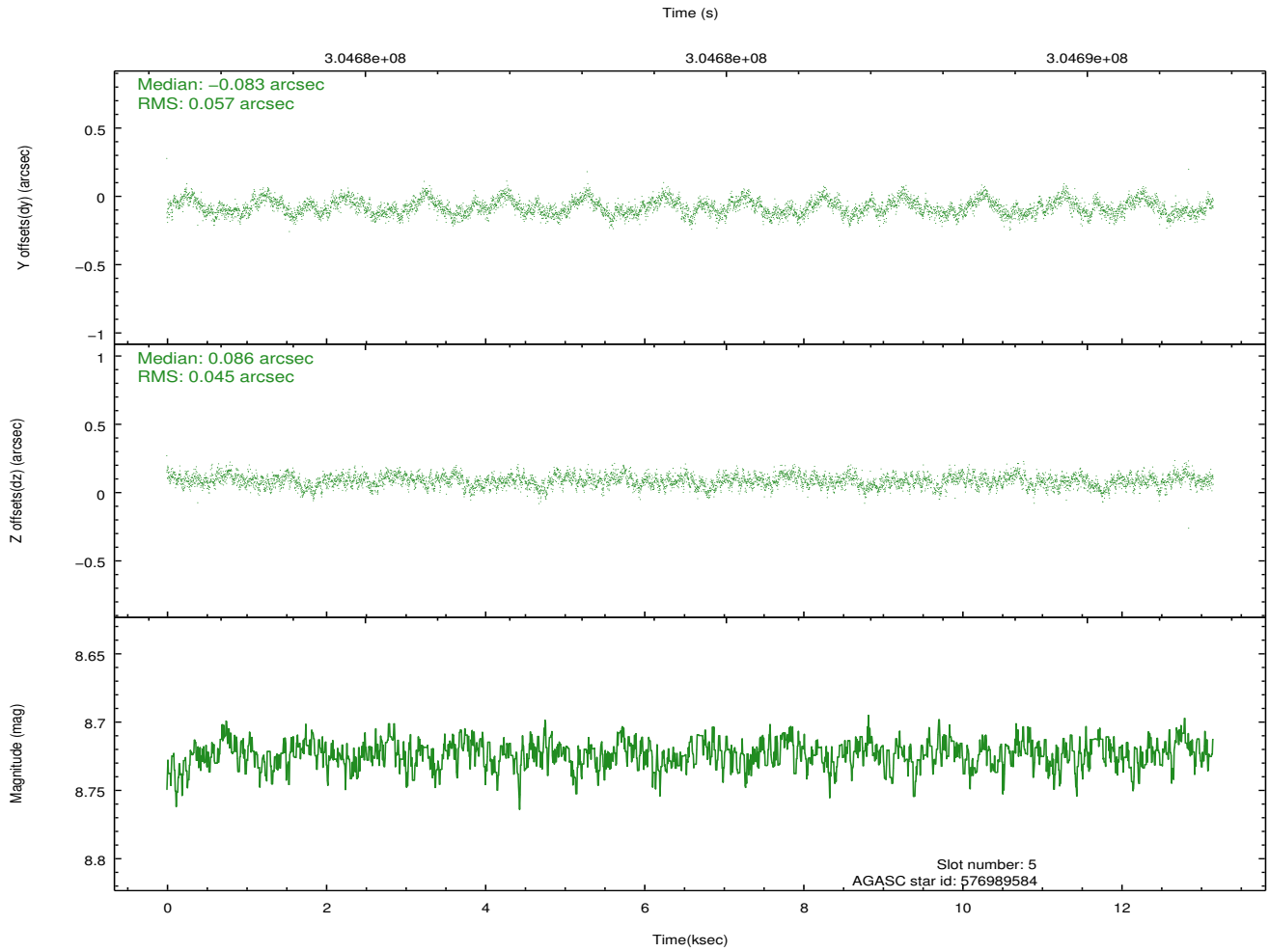
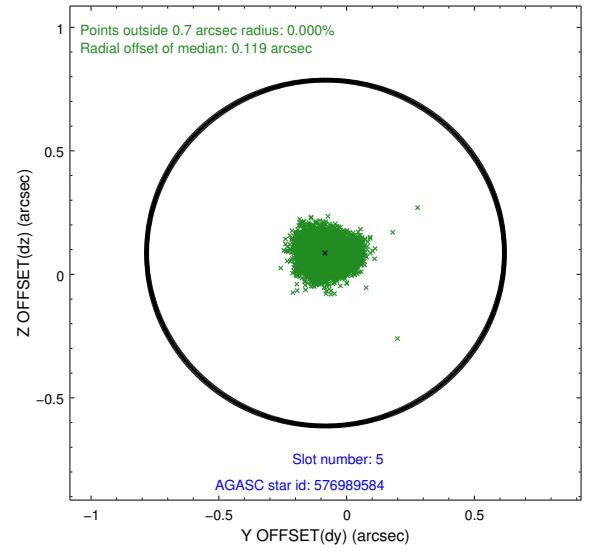
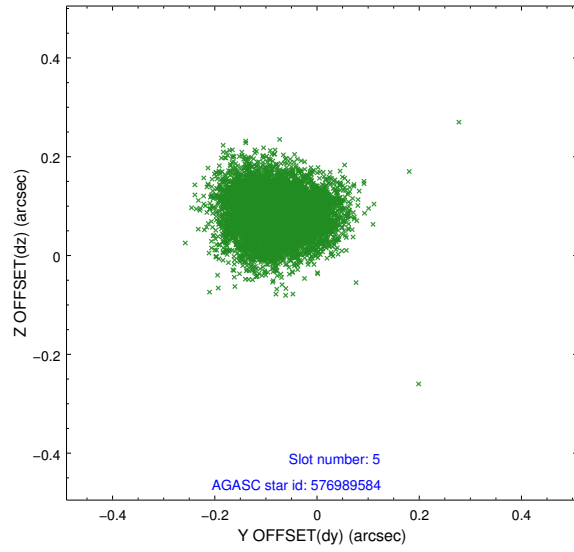
2.4.1 Slot 3



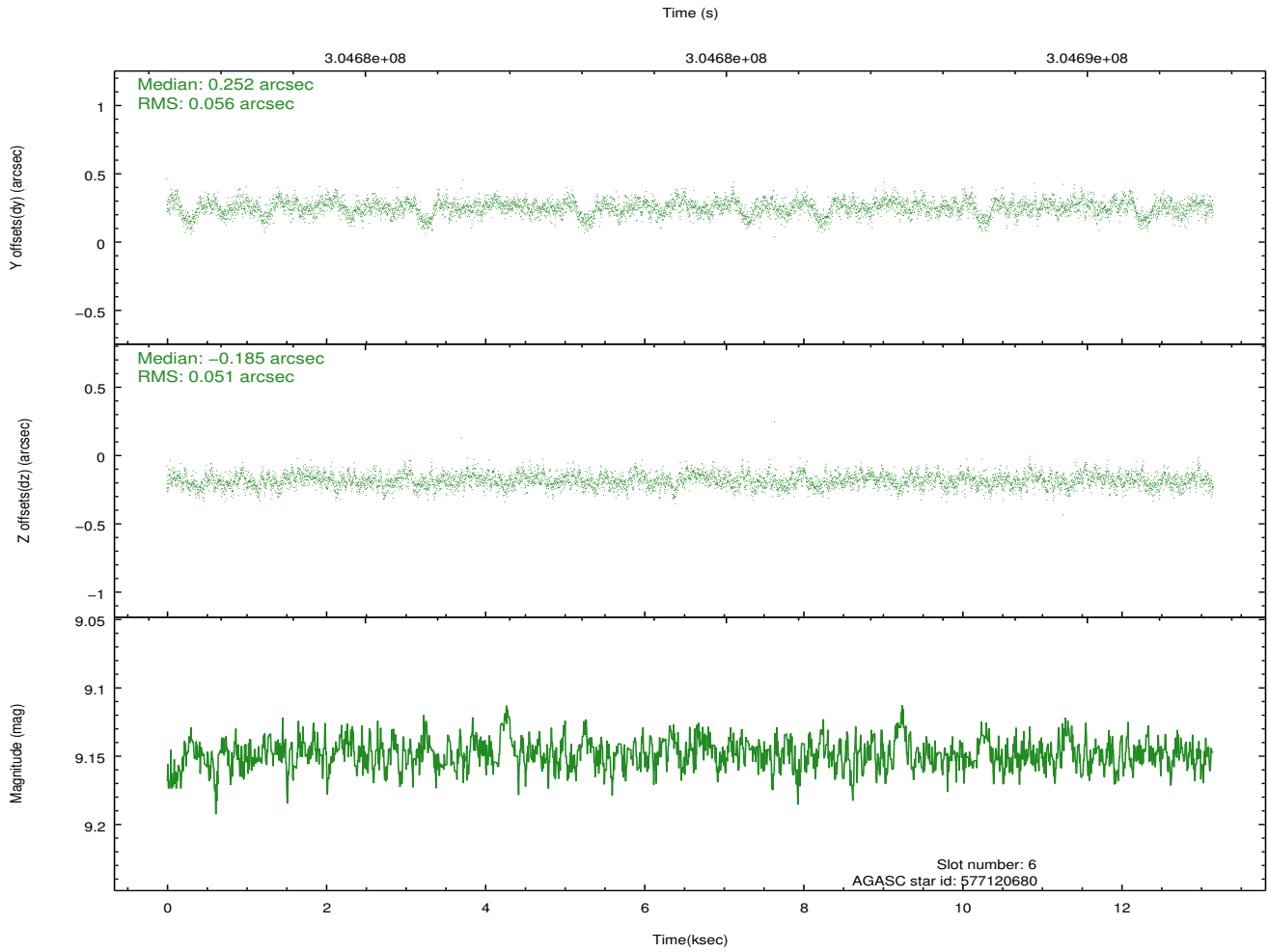
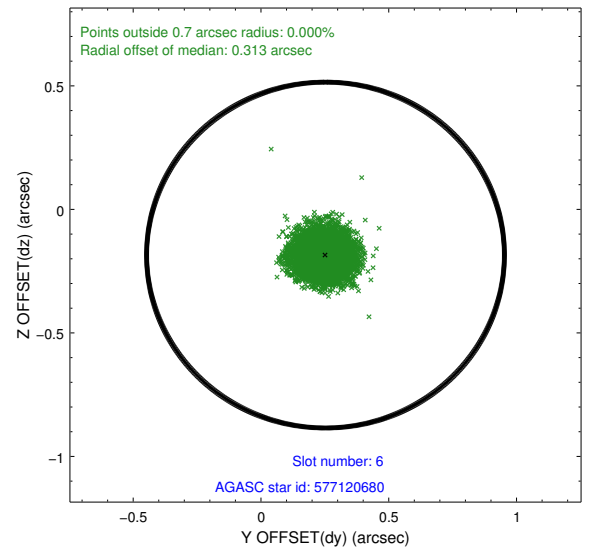
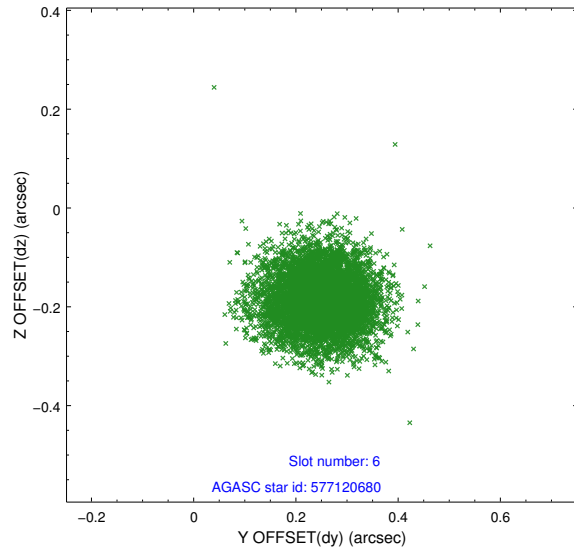
2.4.2 Slot 4



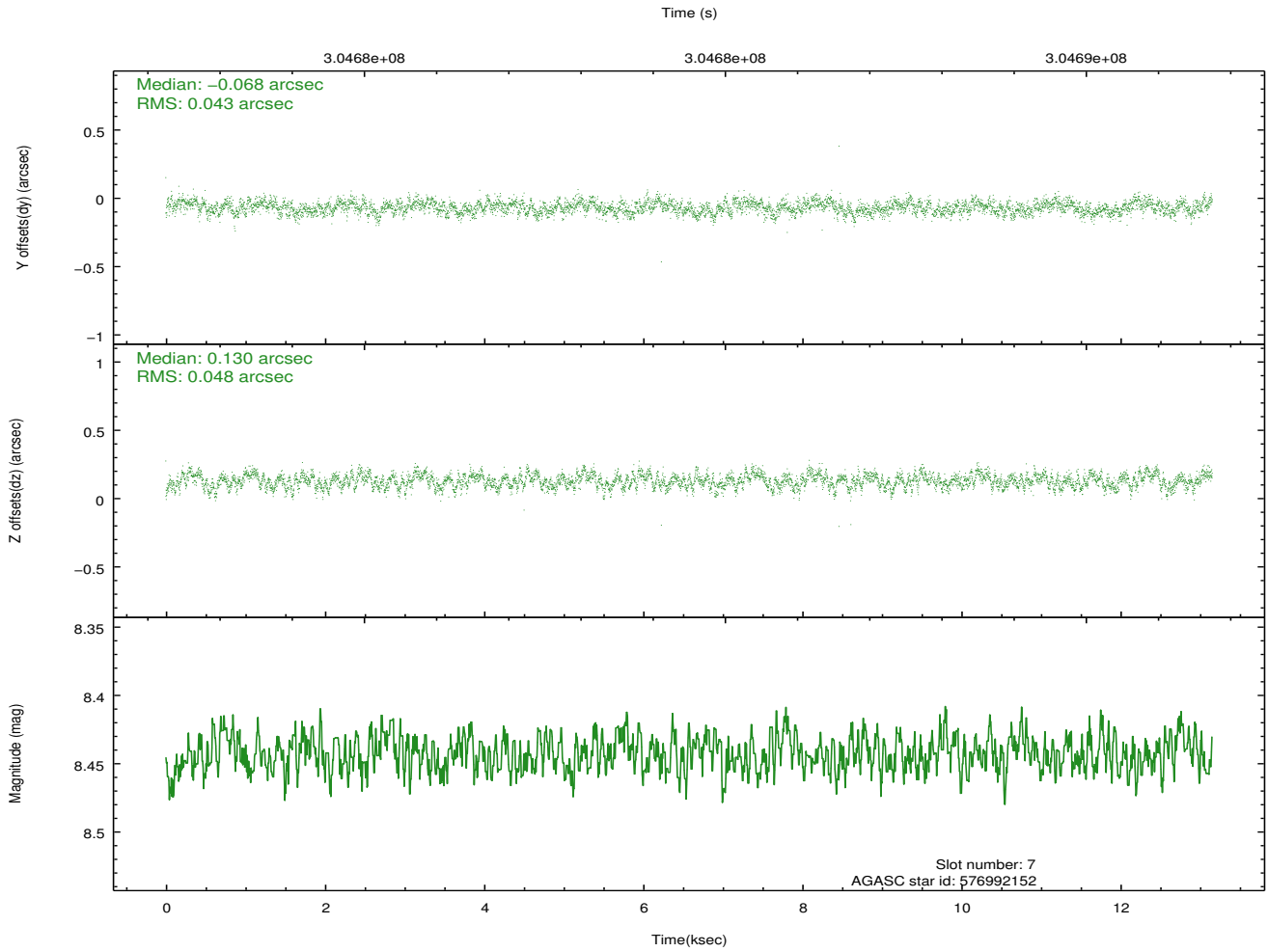
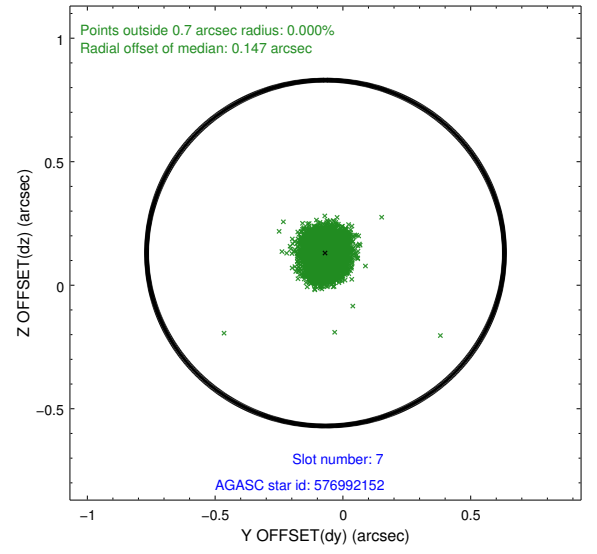
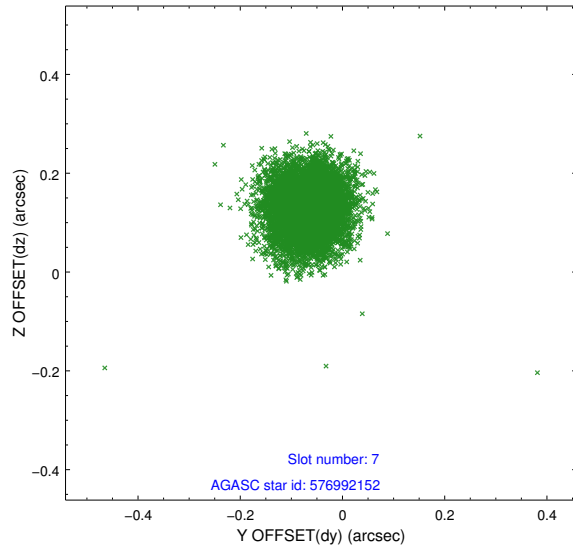
2.4.3 Slot 5



2.4.4 Slot 6

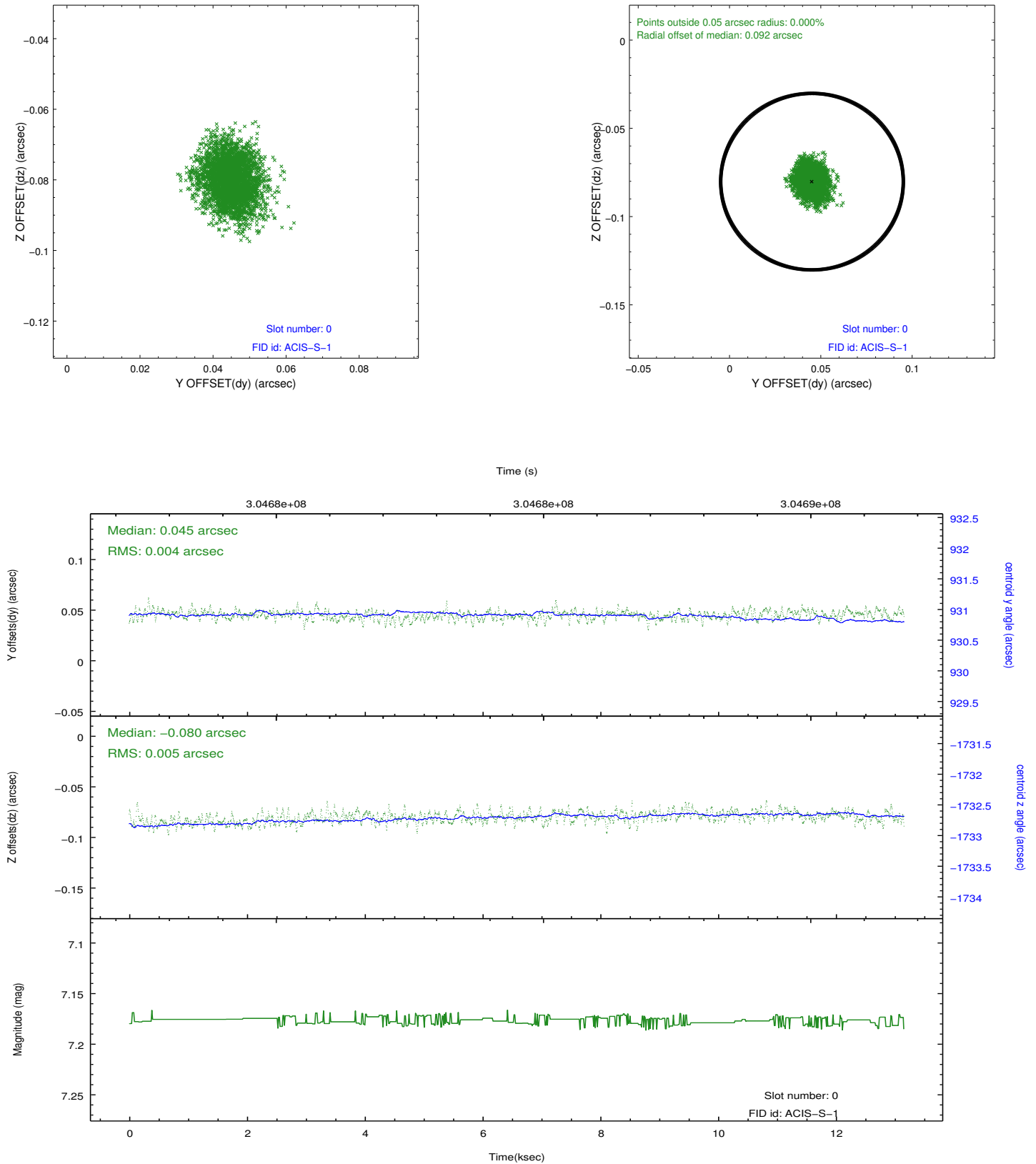


2.4.5 Slot 7

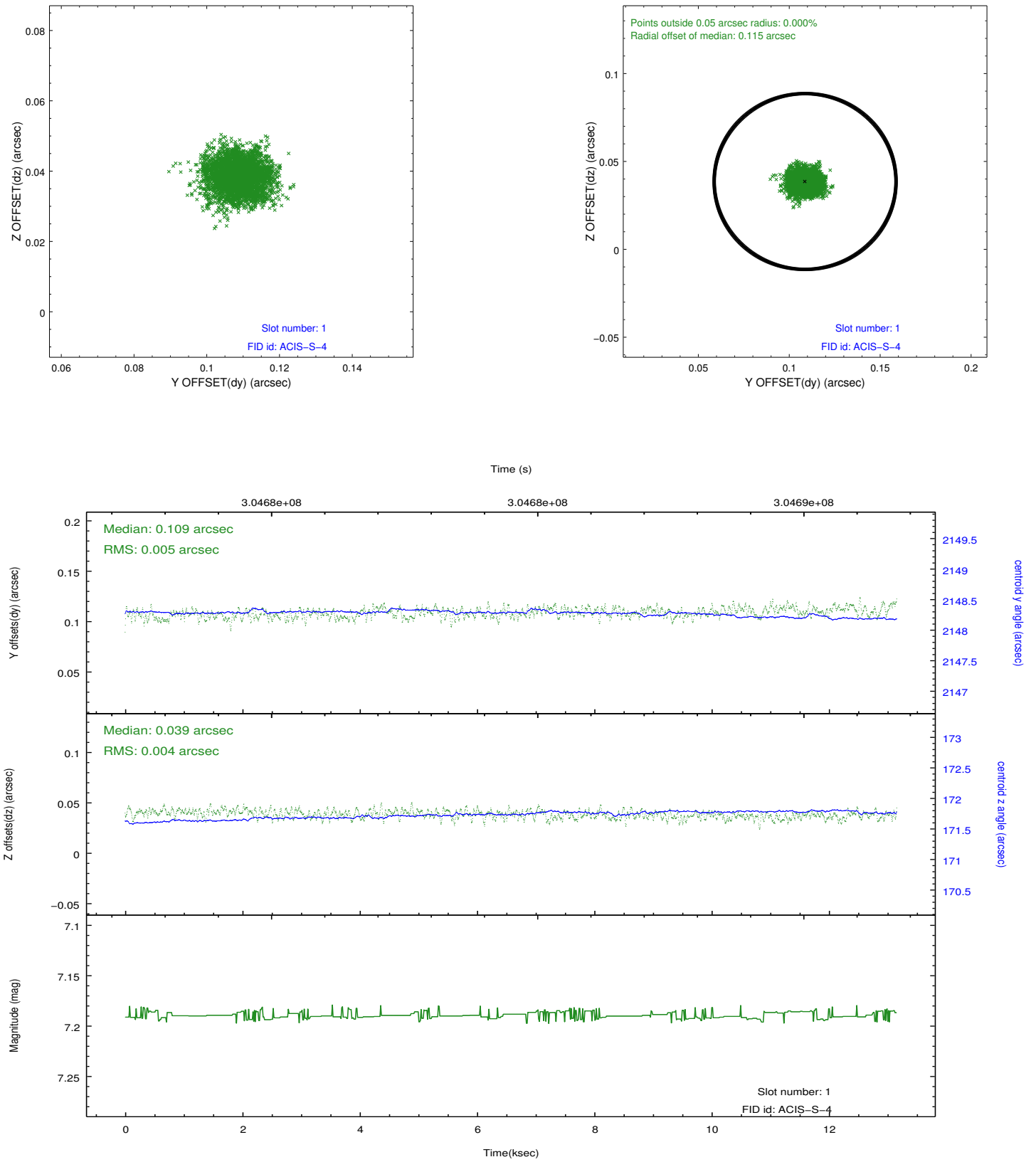


2.5 FID Slots

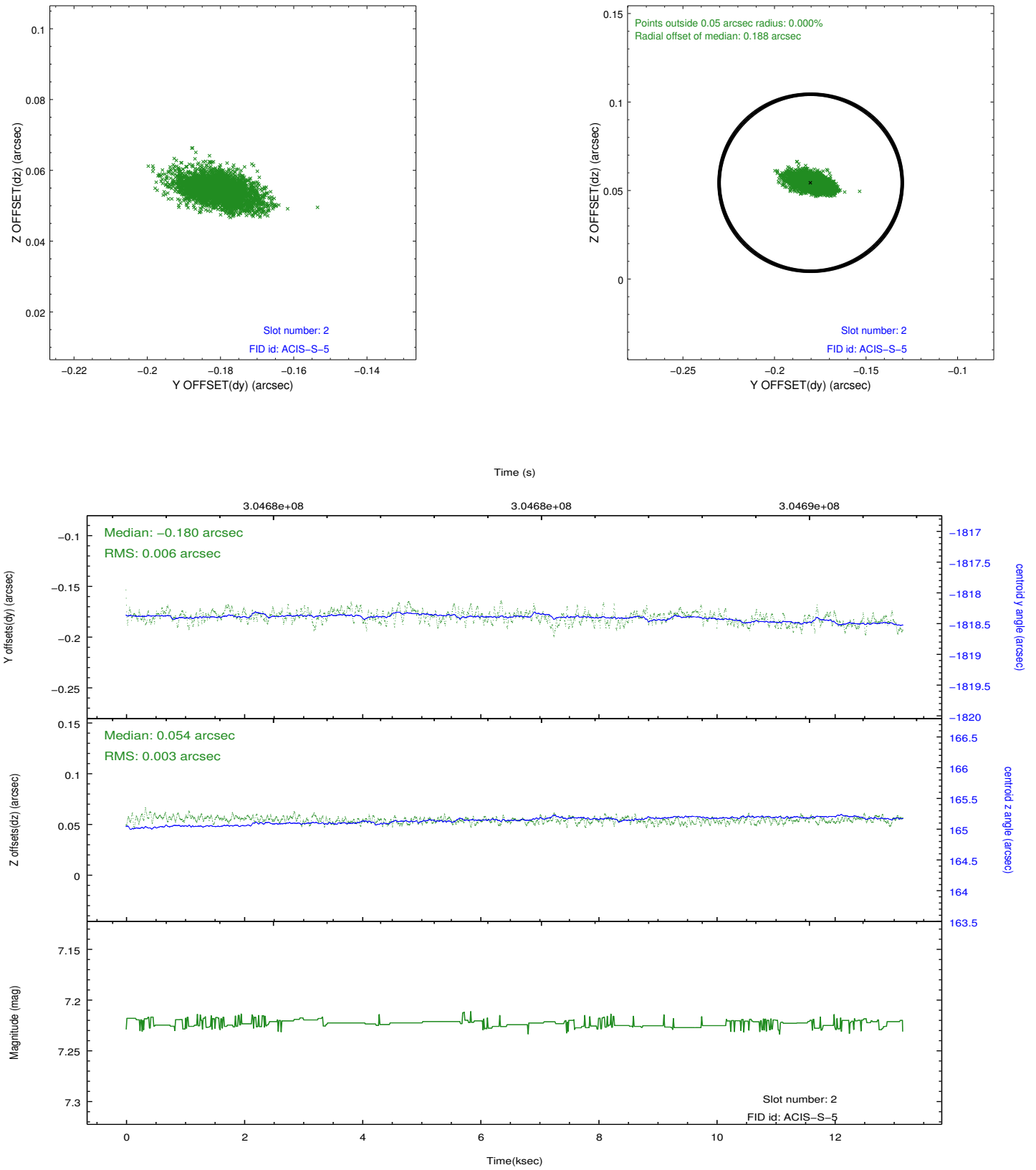
2.5.1 Slot 0



2.5.2 Slot 1



2.5.3 Slot 2



A Summary

A.1 Status

V&V Scientist	Jen Lauer
V&V Date (YYYY-MM-DD)	2012.05.02
V&V Edition	1
V&V Disposition and Status	OK
V&V Charge Time	13.1196312

A.2 Comments