

V&V Reference Report

L2 ASCDS Version : 8.4.4

Observation 8556 - L2 Version 5
Chandra X-Ray Center

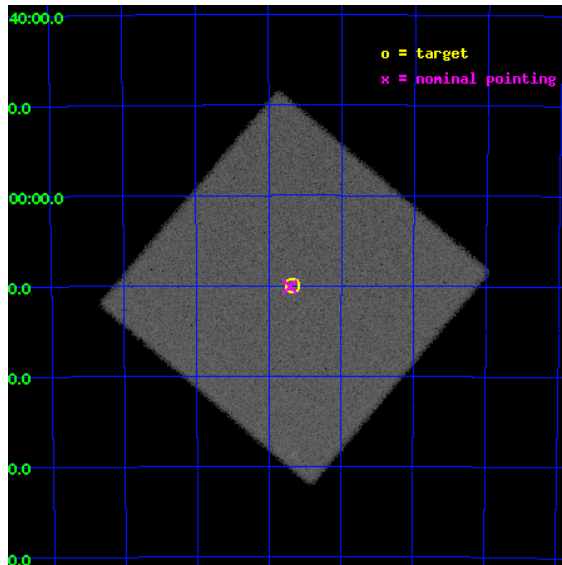
L2 Processing Date : Aug 11 2012

Contents

1	Front	2
2	OBI	3
2.1	OBI	3
2.1.1	Images	3
2.1.2	Parameters	4
2.1.3	Events	4
2.2	Compared Parameters	5
2.3	Aspect	6
2.4	Star Slots	9
2.4.1	Slot 3	9
2.4.2	Slot 4	10
2.4.3	Slot 5	11
2.4.4	Slot 6	12
2.4.5	Slot 7	13
2.5	FID Slots	14
2.5.1	Slot 0	14
2.5.2	Slot 1	15
2.5.3	Slot 2	16
A	Summary	17
A.1	Status	17
A.2	Comments	17

1 Front

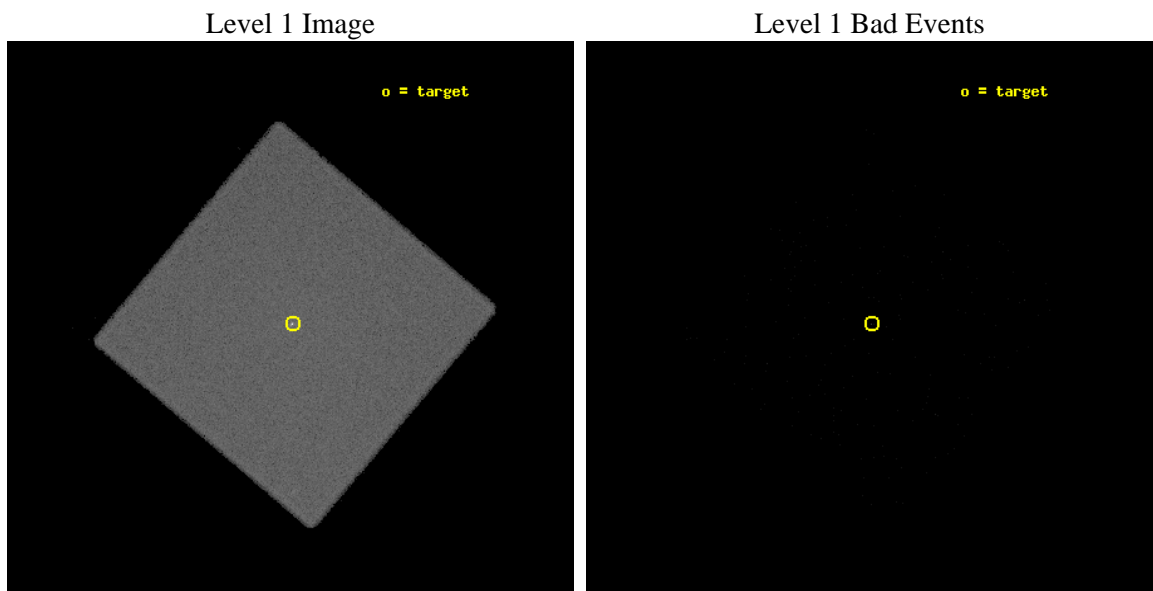
seq_num	400689	Sequence number
obs_id	8556	Observation id
title	X-ray jets in CirX-1	Proposal title
observer	dr Peter Jonker	Principal investigator
object	Cir X-1	Source name
ra_targ	230.170417	Observer's specified target RA [deg]
dec_targ	-57.166944	Observer's specified target Dec [deg]
ra_nom	230.17728014391	Nominal RA [deg]
dec_nom	-57.168820797989	Nominal Dec [deg]
roll_nom	355.32219404417	Nominal Roll [deg]
revision	5	Processing version of data
ontime	7180.3815927505	[s]
livetime	7107.8165656429	Ontime multiplied by DTCOR
l2events	412411	Number of level 2 events



2 OBI

2.1 OBI

2.1.1 Images



2.1.2 Parameters

obi_num	0	Obi number	sched_exp_time	7000.000000	[s] Scheduled observation exposure time
ascdsver	8.4.5	Processing system revision	ontime	7180.3815927505	[s]
caldbver	4.5.1.1	 	l1events	681993	Number of level 1 events
date	2012-08-11T21:18:14	Date and time of file creation			
revision	5	Processing version of data			

2.1.3 Events

Level 1 Events

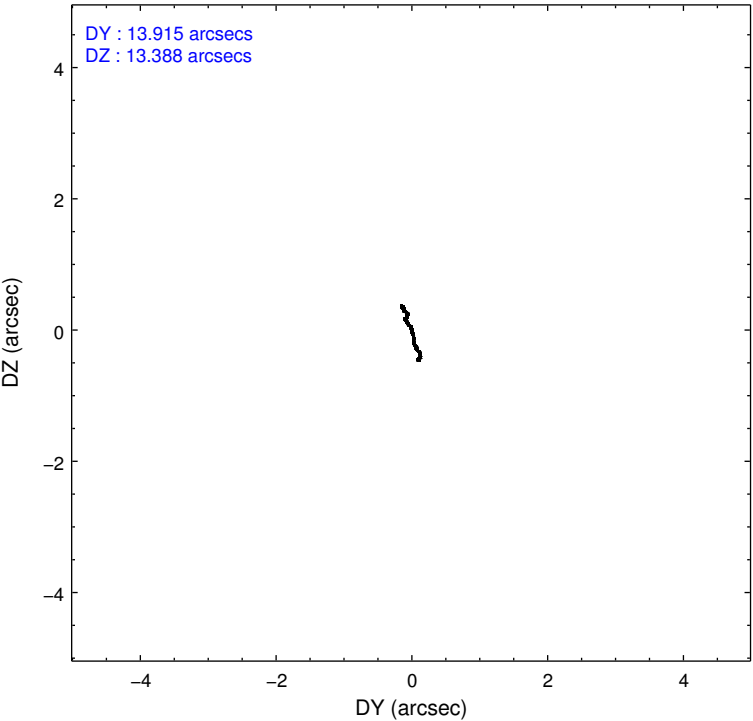
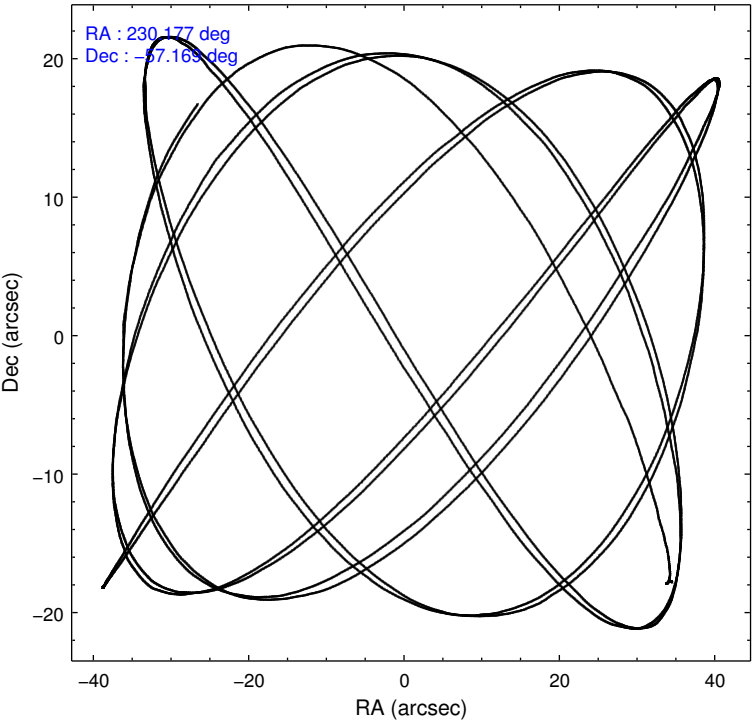
	segment 0
level 1 events	681993
rejected events	69364
rejected %	10%

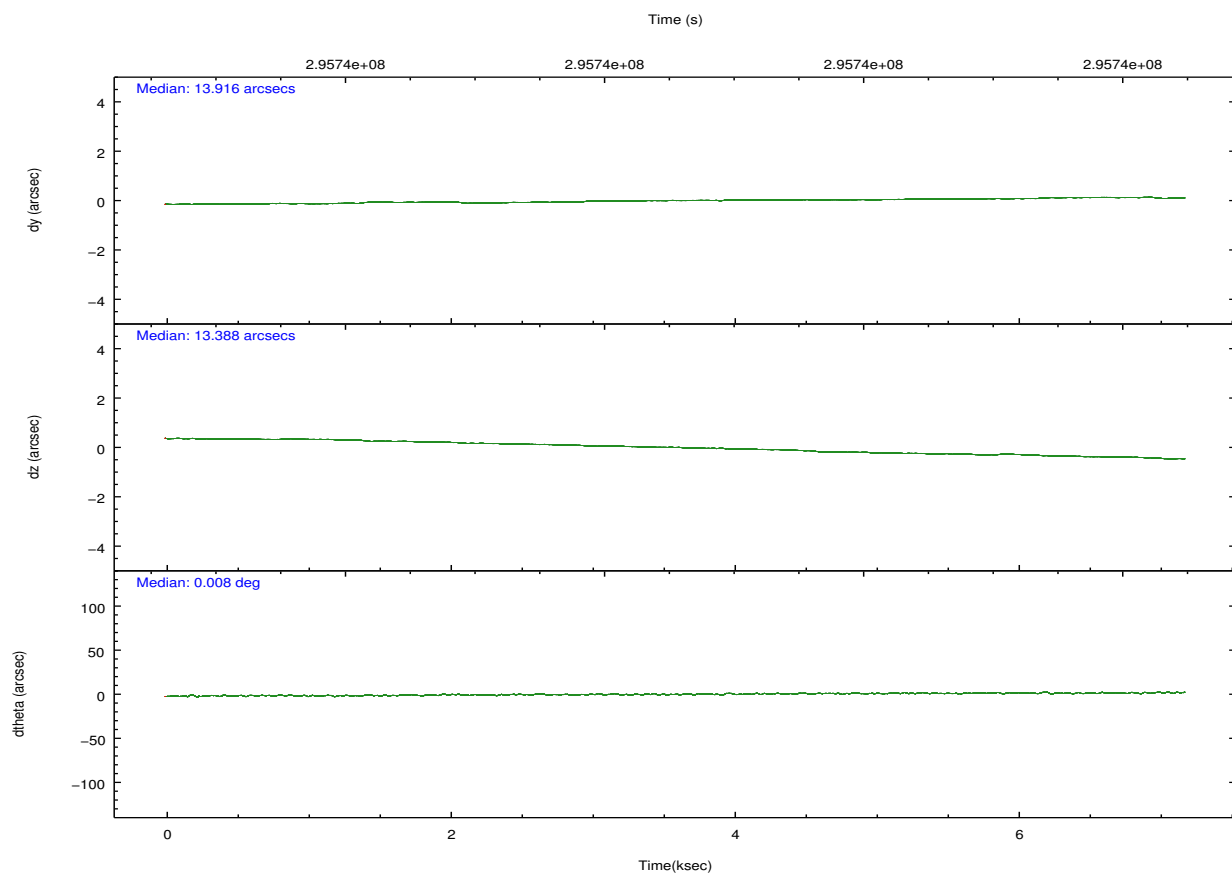
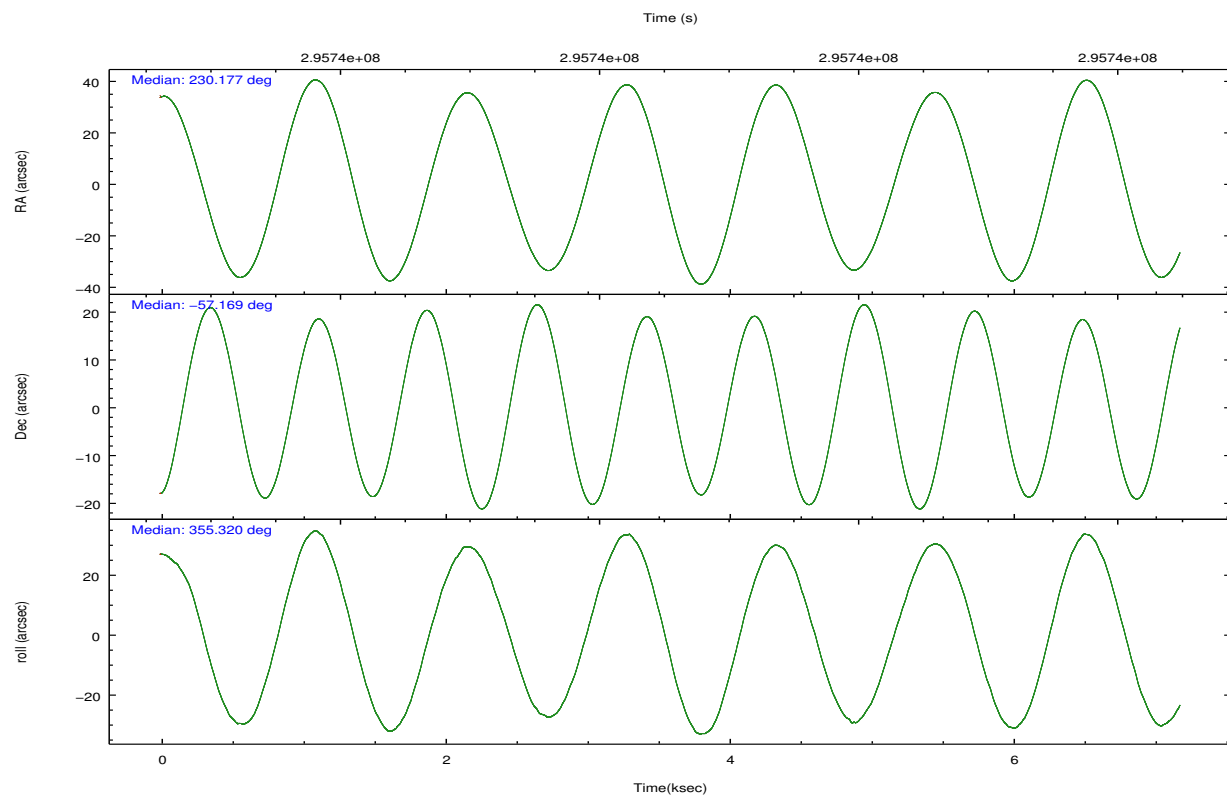
2.2 Compared Parameters

Parameter	Planned	Actual
Instrument	HRC	HRC
Detector	HRC-I	HRC-I
Grating	NONE	NONE
Data mode	OBSERVING	OBSERVING
Observation mode	POINTING	POINTING
[deg] Pointing RA	230.132546	230.1772801439051
[deg] Pointing Dec	-57.181003	-57.16882079798927
[deg] Pointing Roll	355.380091	355.3221940441691
[mm] SIM focus pos	-1.040293	-1.038866356238299
[mm] SIM defocus	0	0.001426264420575141
[mm] SIM translation stage pos	126.985494	126.9829799899862
[mm] SIM translation stage offset	0	0.002508901615314585
[s] Observation start time (MET)	295737128.184000	295736169.53839
Observation start date	2007-05-16T21:11:03	2007-05-16T20:56:09
[s] Observation end time (MET)	295744128.184000	295744927.65131
Observation end date	2007-05-16T23:07:43	2007-05-16T23:22:07

Parameter	Planned	Actual
Obspar format version number	7	7
Obspar file type	PREDICTED	ACTUAL
Obspar update status	NONE	UPDATED

2.3 Aspect



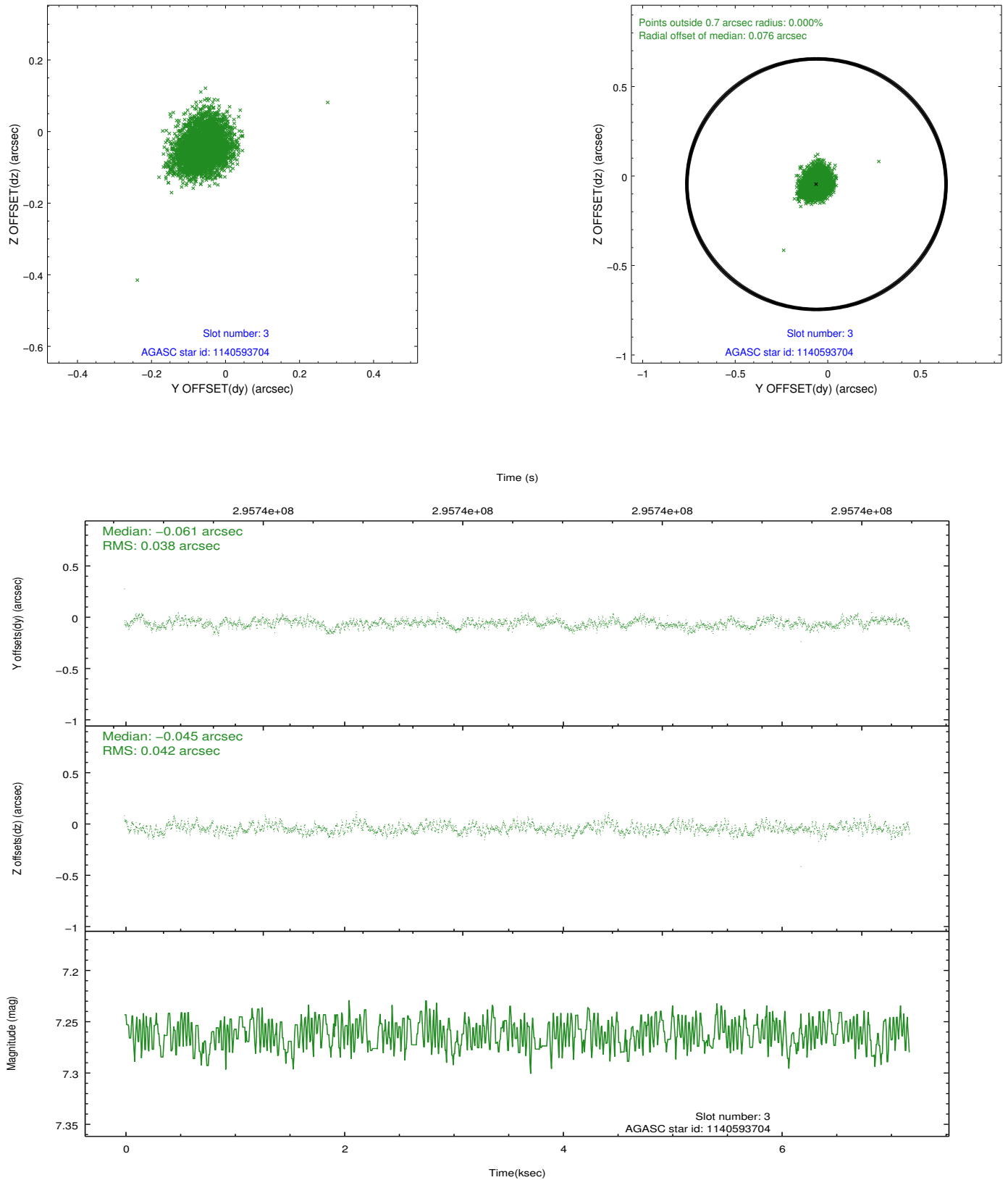


Slot Statistics

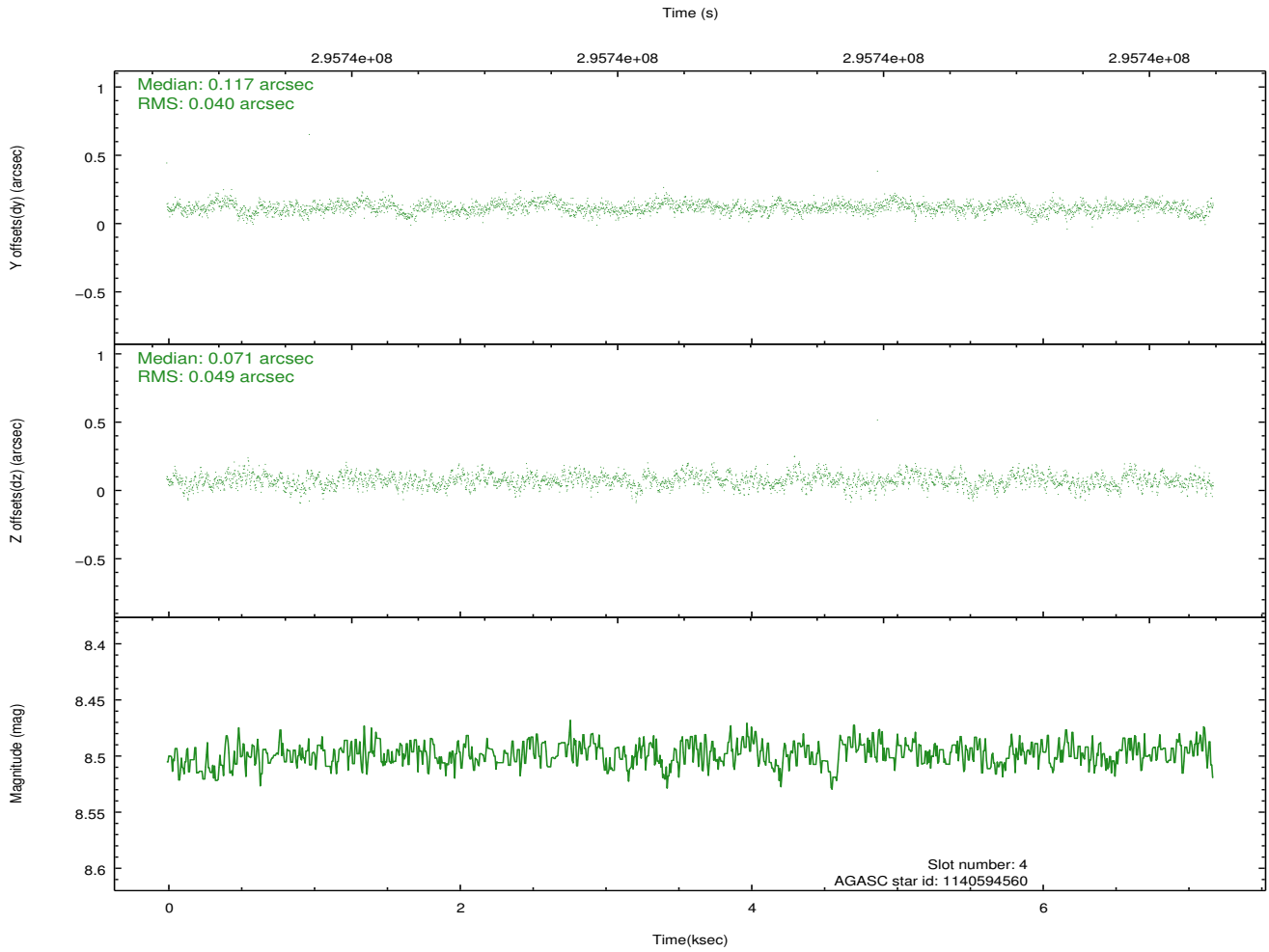
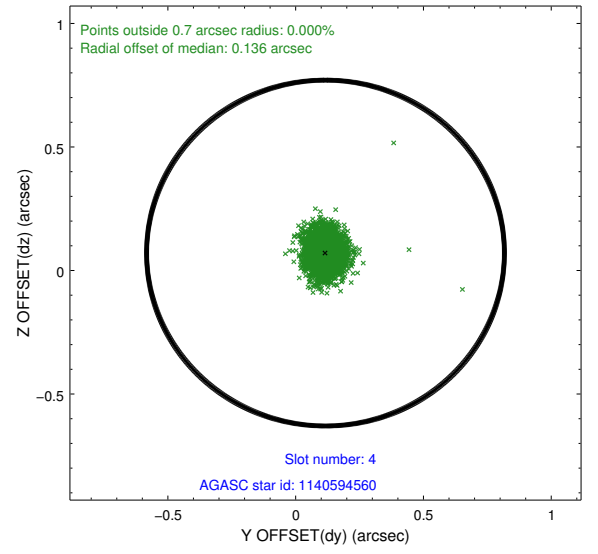
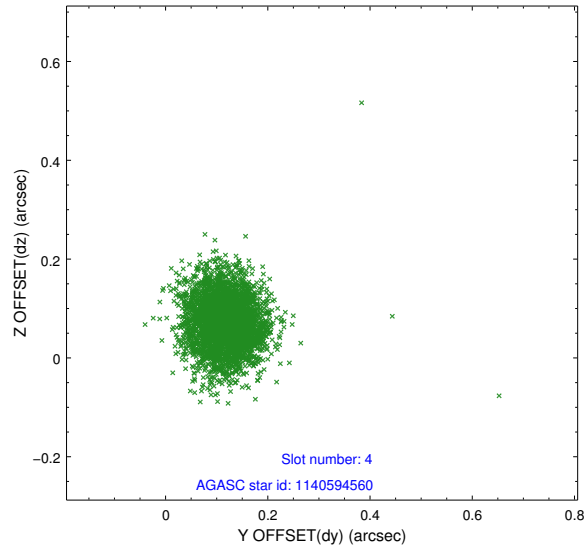
slot	status	id	mag	n_pts	med_dy	med_dz	dr1	dr2	ra	dec	mean_y	mean_z
0	FID	HRC-I-2	7.01	1752	0.140	-0.095	0.011	0.017	0.000000	0.000000	843.11	-1303.06
1	FID	HRC-I-3	7.06	1752	-0.118	0.076	0.009	0.015	0.000000	0.000000	-1197.81	1002.47
2	FID	HRC-I-4	7.00	1752	0.097	-0.067	0.007	0.012	0.000000	0.000000	1272.52	1001.28
3	GUIDE	1140593704	7.26	3502	-0.061	-0.045	0.060	0.096	229.741417	-57.540991	-648.19	-1354.77
4	GUIDE	1140594560	8.50	3502	0.117	0.071	0.067	0.110	229.144979	-57.397081	-1845.07	-943.79
5	GUIDE	1140723840	8.59	3503	-0.116	-0.131	0.067	0.108	230.379592	-56.994965	428.88	705.41
6	GUIDE	1140726312	8.88	3501	-0.041	0.054	0.082	0.130	231.010622	-56.676215	1585.77	1940.17
7	GUIDE	1140722800	9.15	3498	0.101	0.046	0.089	0.139	231.057080	-56.699276	1683.76	1864.22

2.4 Star Slots

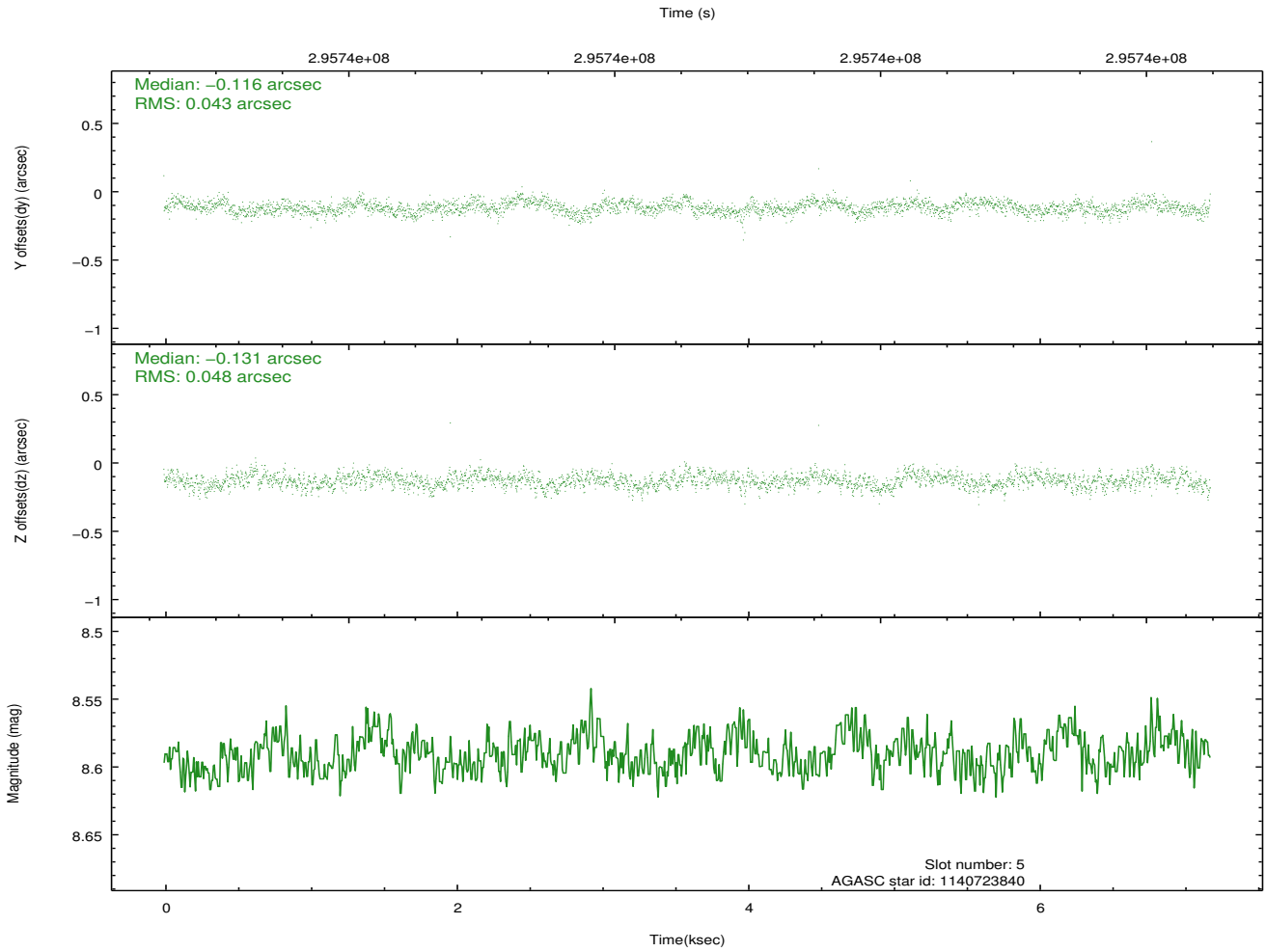
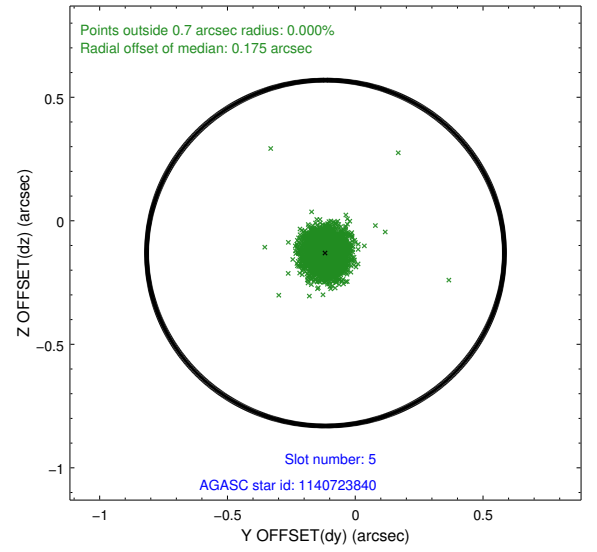
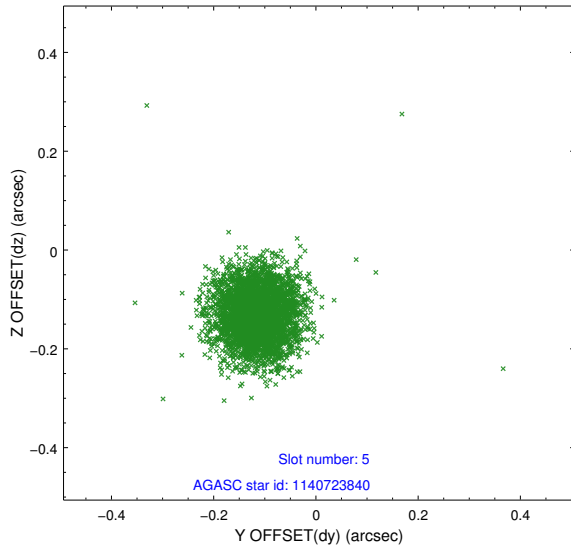
2.4.1 Slot 3



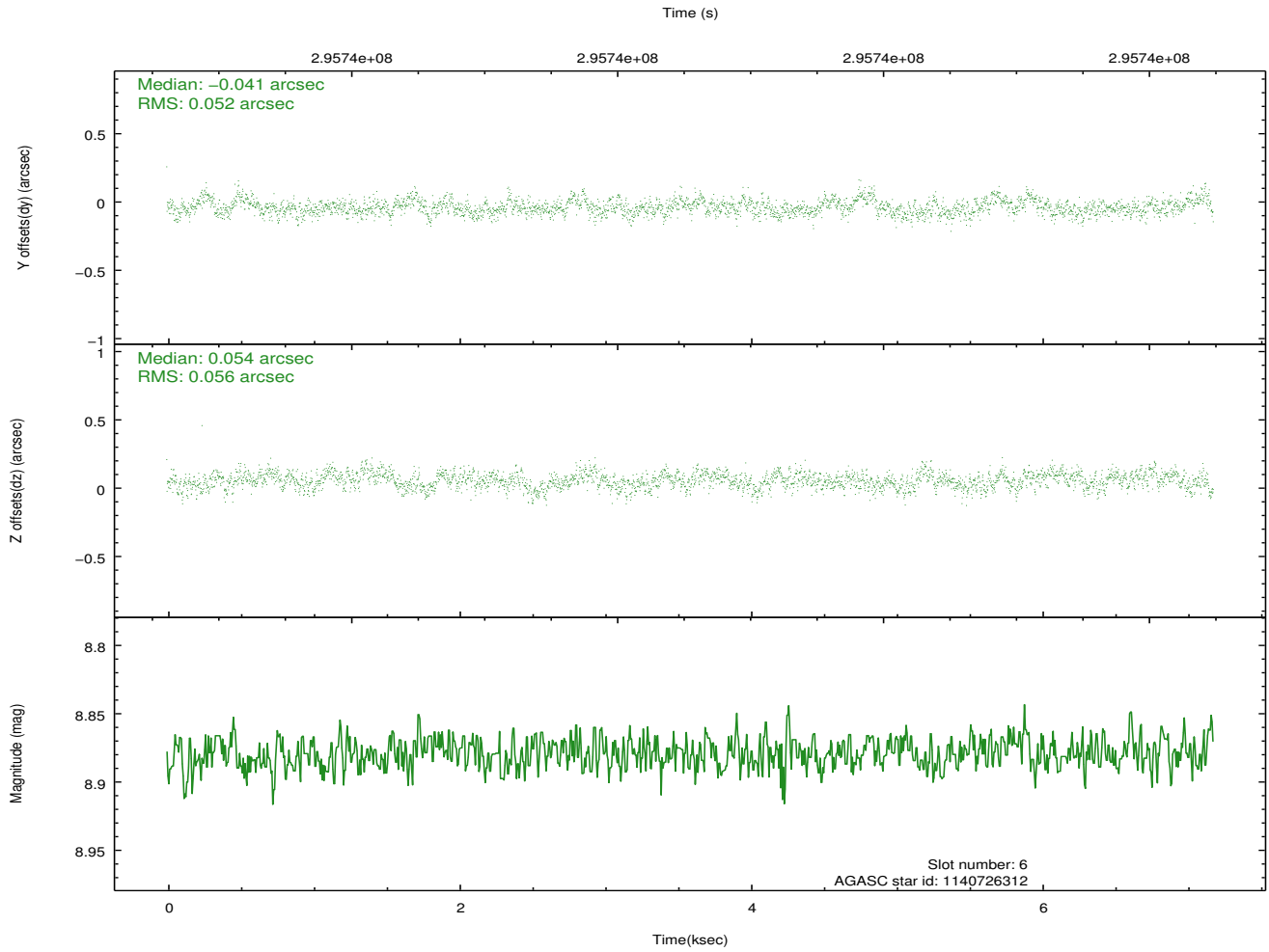
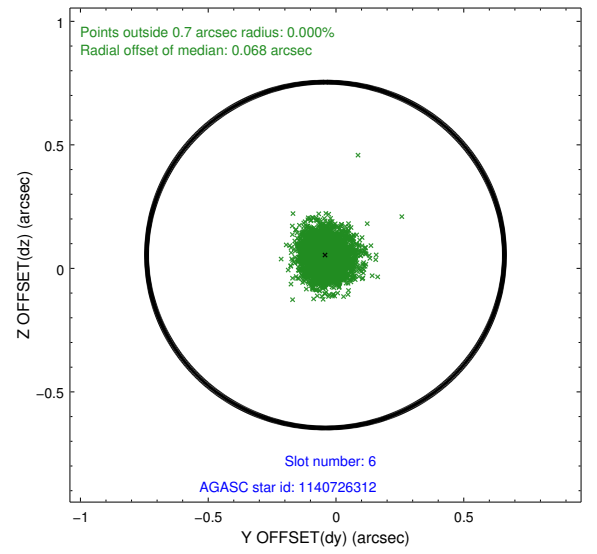
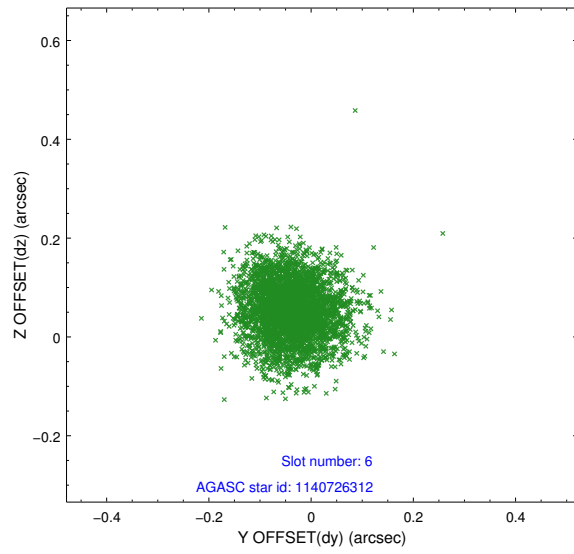
2.4.2 Slot 4



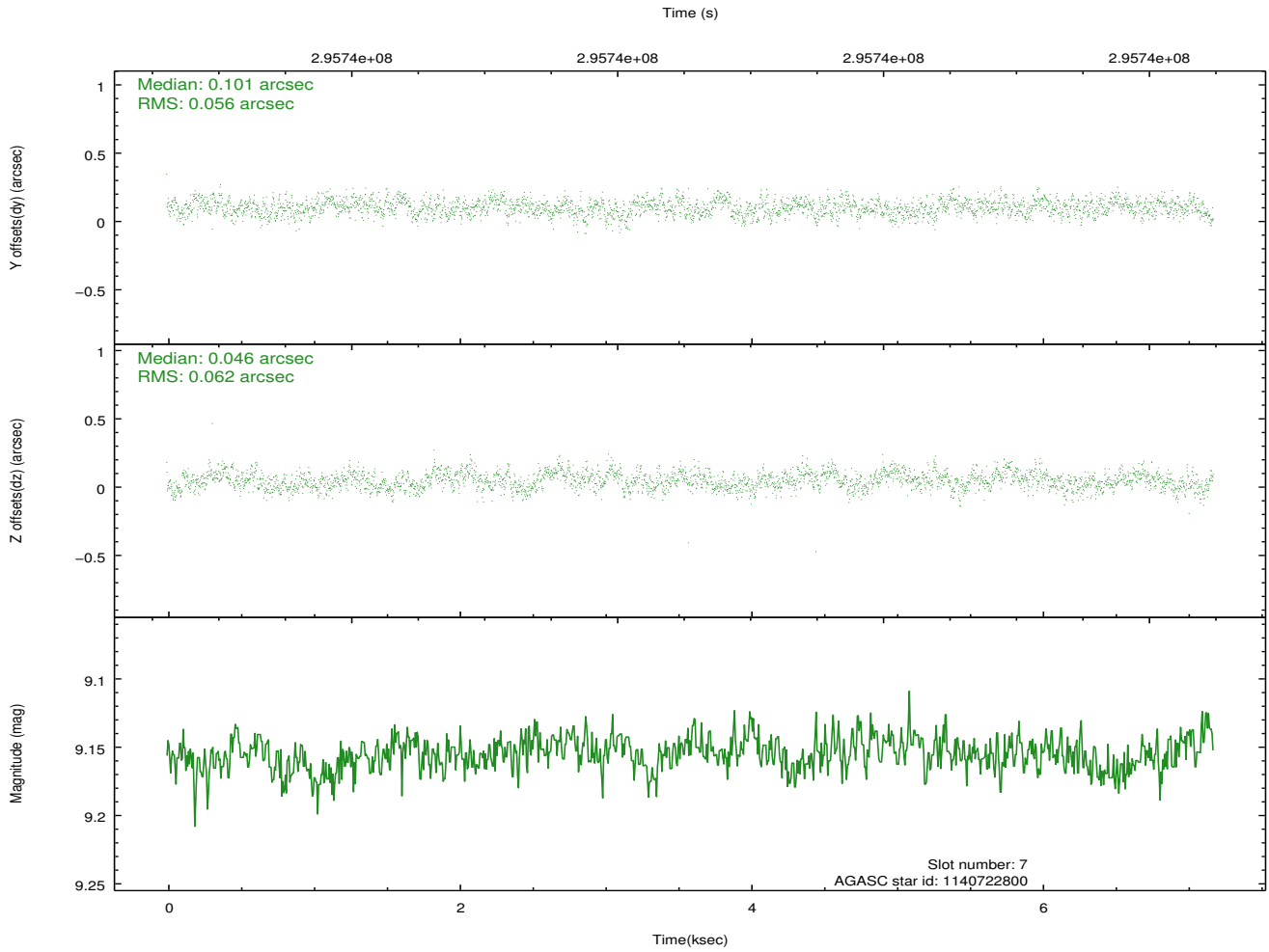
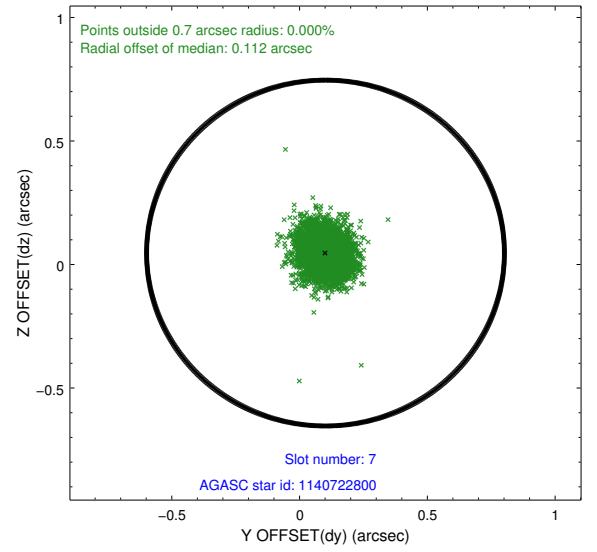
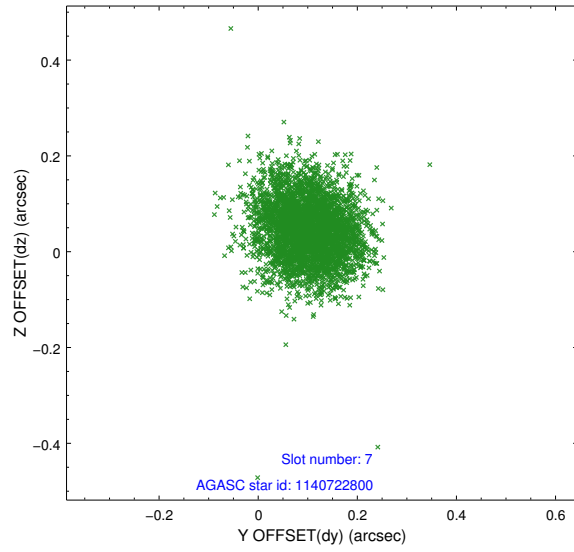
2.4.3 Slot 5



2.4.4 Slot 6

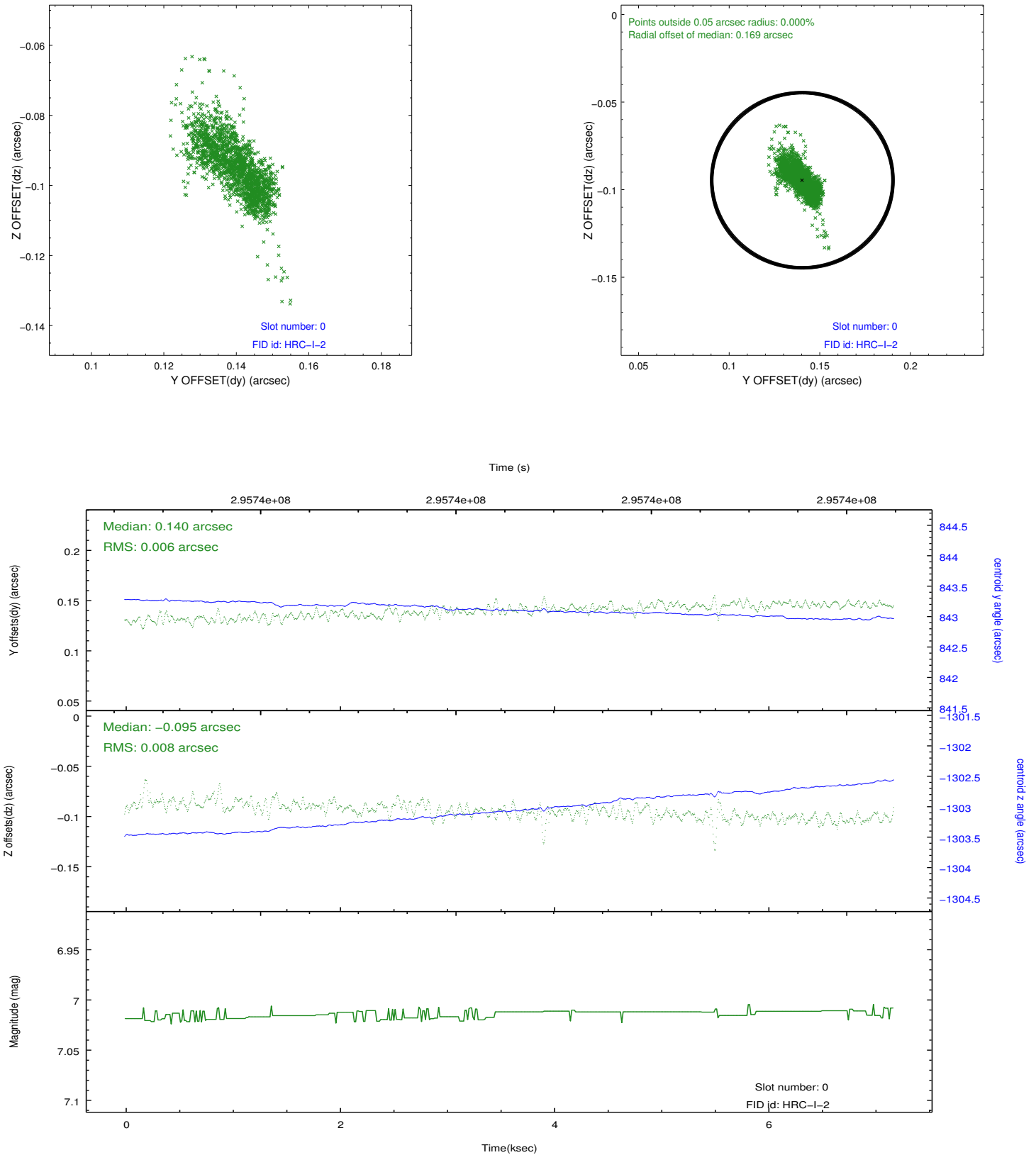


2.4.5 Slot 7

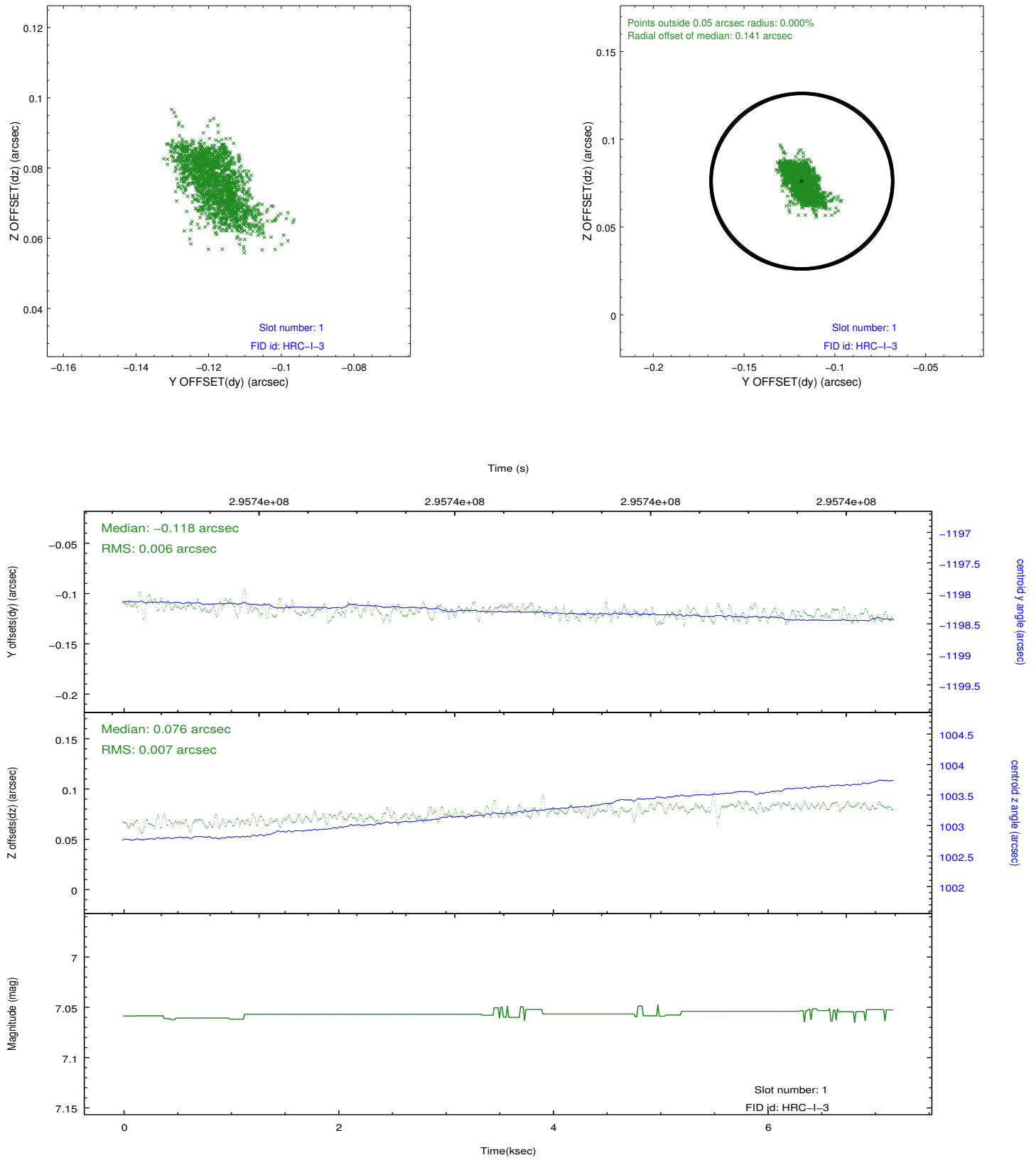


2.5 FID Slots

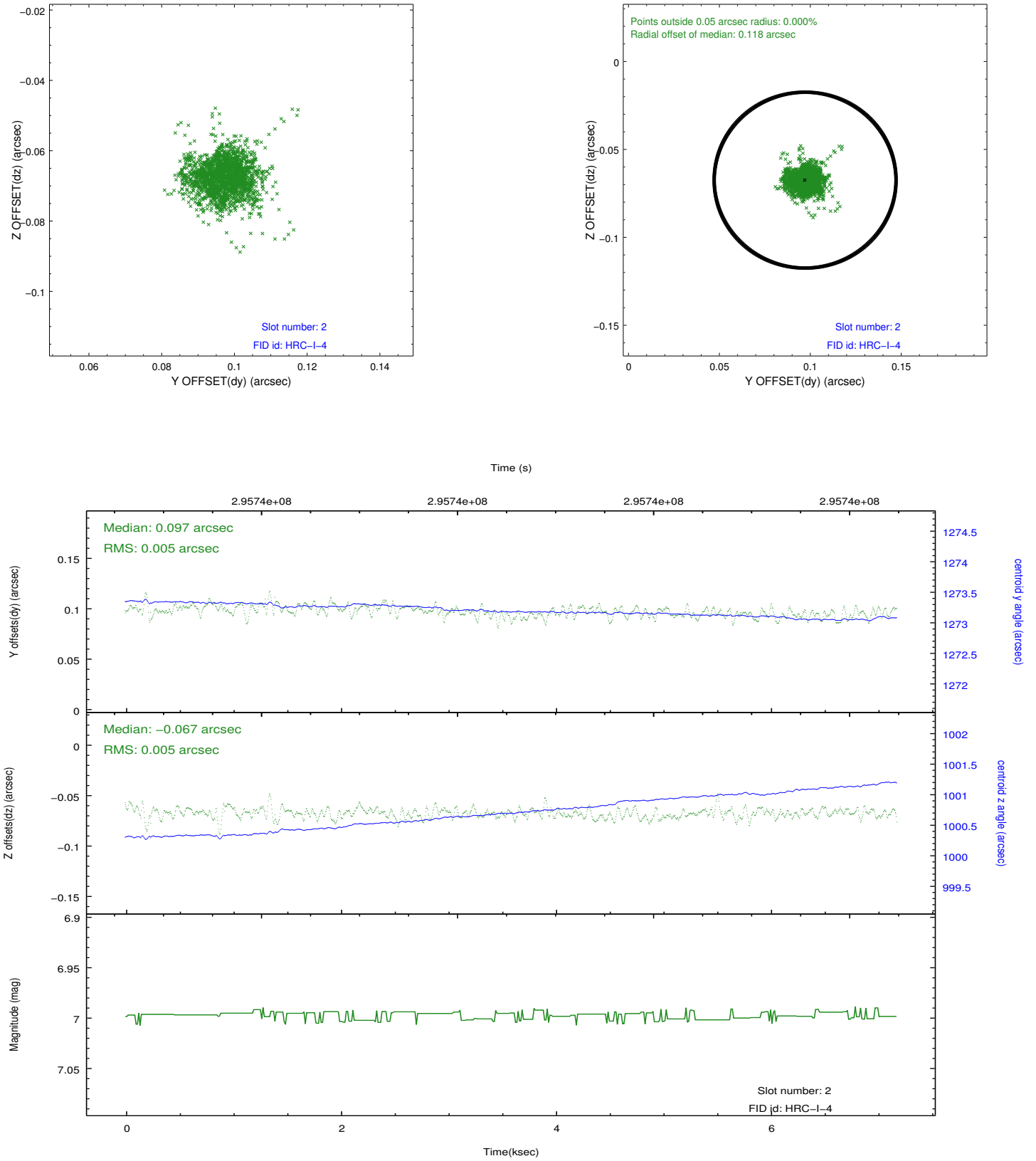
2.5.1 Slot 0



2.5.2 Slot 1



2.5.3 Slot 2



A Summary

A.1 Status

V&V Scientist	Beth Sundheim
V&V Date (YYYY-MM-DD)	2012.08.15
V&V Edition	1
V&V Disposition and Status	OK
V&V Charge Time	7.18038159

A.2 Comments