

V&V Reference Report

L2 ASCDS Version : 8.4.4

Observation 7557 - L2 Version 2
Chandra X-Ray Center

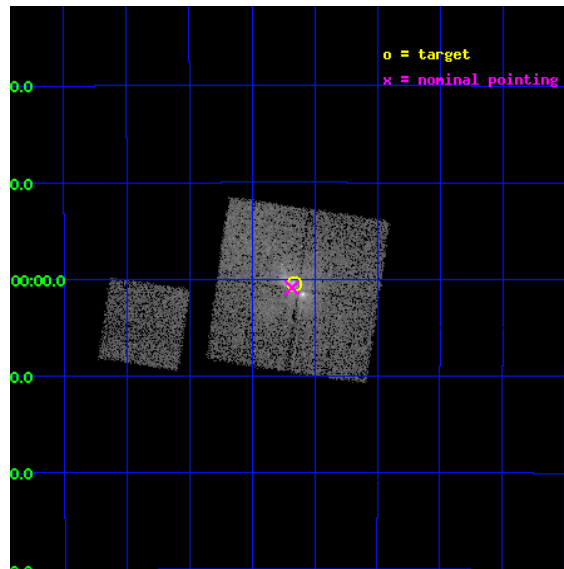
L2 Processing Date : Apr 27 2012

Contents

| | | |
|----------|-------------------------------|-----------|
| 1 | Front | 2 |
| 2 | OBI | 3 |
| 2.1 | OBI | 3 |
| 2.1.1 | Images | 3 |
| 2.1.2 | Bias | 3 |
| 2.1.3 | Parameters | 4 |
| 2.1.4 | Events | 4 |
| 2.2 | Compared Parameters | 5 |
| 2.3 | Aspect | 6 |
| 2.4 | Star Slots | 9 |
| 2.4.1 | Slot 3 | 9 |
| 2.4.2 | Slot 4 | 10 |
| 2.4.3 | Slot 5 | 11 |
| 2.4.4 | Slot 6 | 12 |
| 2.4.5 | Slot 7 | 13 |
| 2.5 | FID Slots | 14 |
| 2.5.1 | Slot 0 | 14 |
| 2.5.2 | Slot 1 | 15 |
| 2.5.3 | Slot 2 | 16 |
| A | Summary | 17 |
| A.1 | Status | 17 |
| A.2 | Comments | 17 |

1 Front

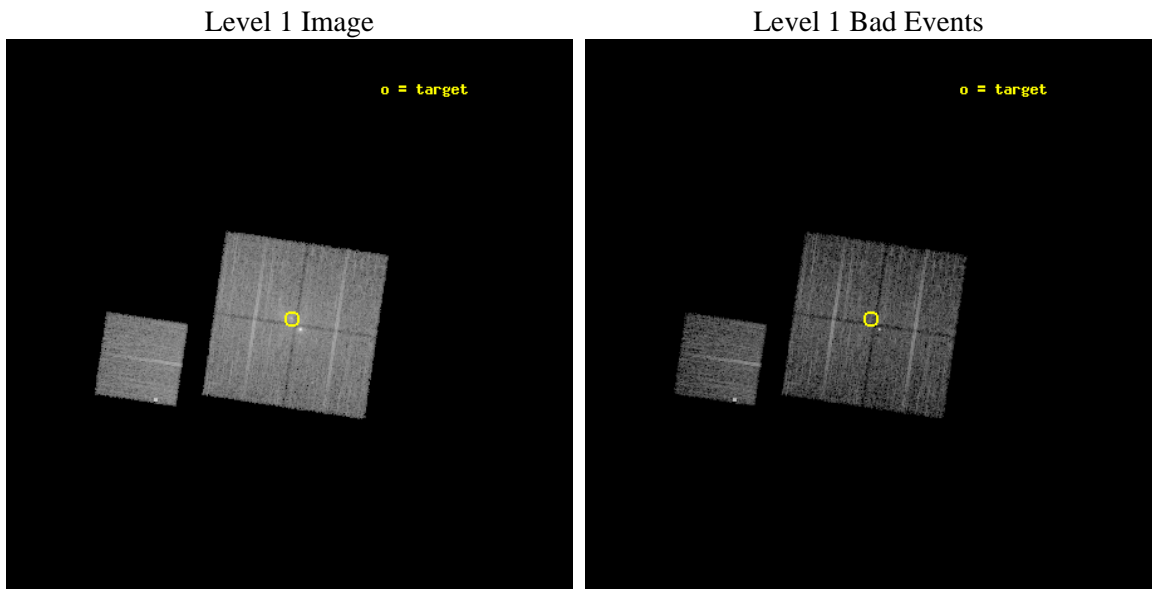
| | | |
|----------|--|---|
| seq_num | 400667 | Sequence number |
| obs_id | 7557 | Observation id |
| title | Monitoring Faint X-ray Transients in the Galactic Center | Proposal |
| observer | Dr. Frederick Baganoff | Principal investigator |
| object | Sgr A* | Source name |
| dtcycle | 0 | |
| cycle | P | events from which exps? Prim/Second/Both |
| ra_targ | 266.416667 | Observer's specified target RA [deg] |
| dec_targ | -29.007778 | Observer's specified target Dec [deg] |
| ra_nom | 266.42069493111 | Nominal RA [deg] |
| dec_nom | -29.014975906162 | Nominal Dec [deg] |
| roll_nom | 278.41839359603 | Nominal Roll [deg] |
| revision | 2 | Processing version of data |
| ontime | 5046.5920327306 | Sum of GTIs [s] |
| livetime | 4980.6545925759 | Livetime [s] |
| ontime0 | 5046.4689127207 | Sum of GTIs [s] |
| ontime1 | 5046.509952724 | Sum of GTIs [s] |
| ontime2 | 5046.5509927273 | Sum of GTIs [s] |
| ontime3 | 5046.5920327306 | Sum of GTIs [s] |
| ontime6 | 5046.4278727174 | Sum of GTIs [s] |
| l2events | 50783 | Number of level 2 events |



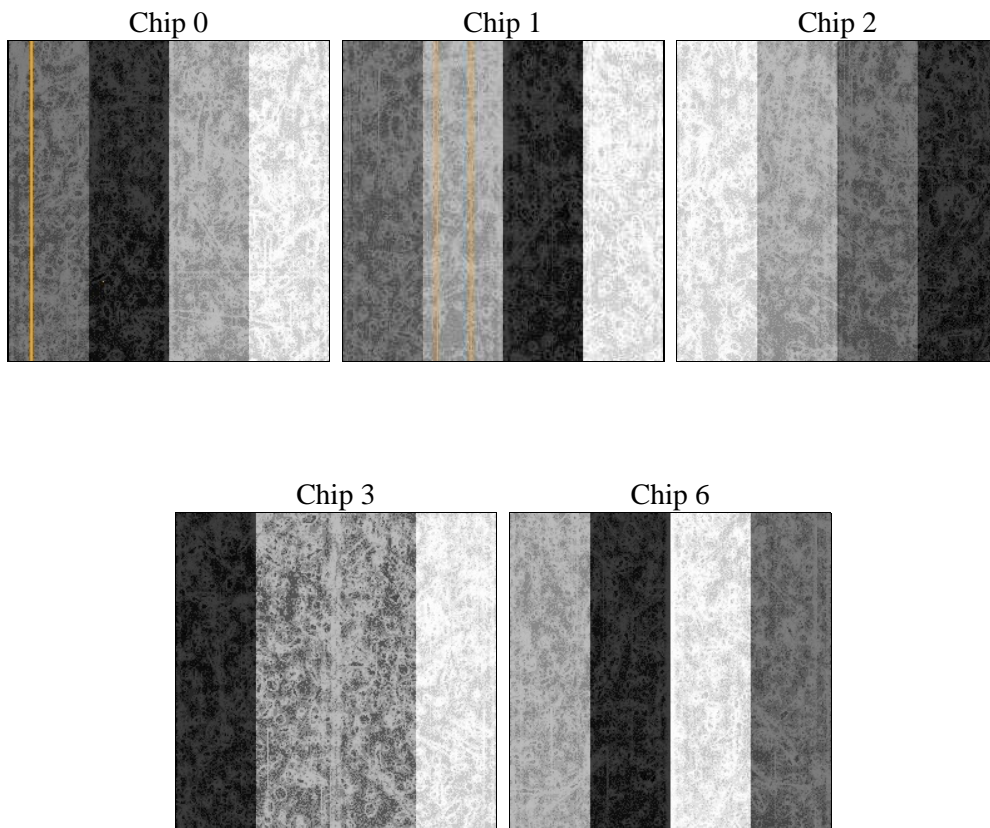
2 OBI

2.1 OBI

2.1.1 Images



2.1.2 Bias



2.1.3 Parameters

| | | | | | |
|----------|---------------------|--------------------------------|----------------|-----------------|---|
| obi_num | 0 | Obi number | sched_exp_time | 5000.000000 | [s] Scheduled observation exposure time |
| ascdsver | 8.4.4 | Processing system revision | ontime | 5046.5920327306 | Sum of GTIs [s] |
| caldsver | 4.4.9 | | ontime0 | 5046.4689127207 | Sum of GTIs [s] |
| date | 2012-04-28T02:05:39 | Date and time of file creation | ontime1 | 5046.509952724 | Sum of GTIs [s] |
| revision | 2 | Processing version of data | ontime2 | 5046.5509927273 | Sum of GTIs [s] |
| | | | ontime3 | 5046.5920327306 | Sum of GTIs [s] |
| | | | ontime6 | 5046.4278727174 | Sum of GTIs [s] |
| | | | l1events | 272384 | Number of level 1 events |

2.1.4 Events

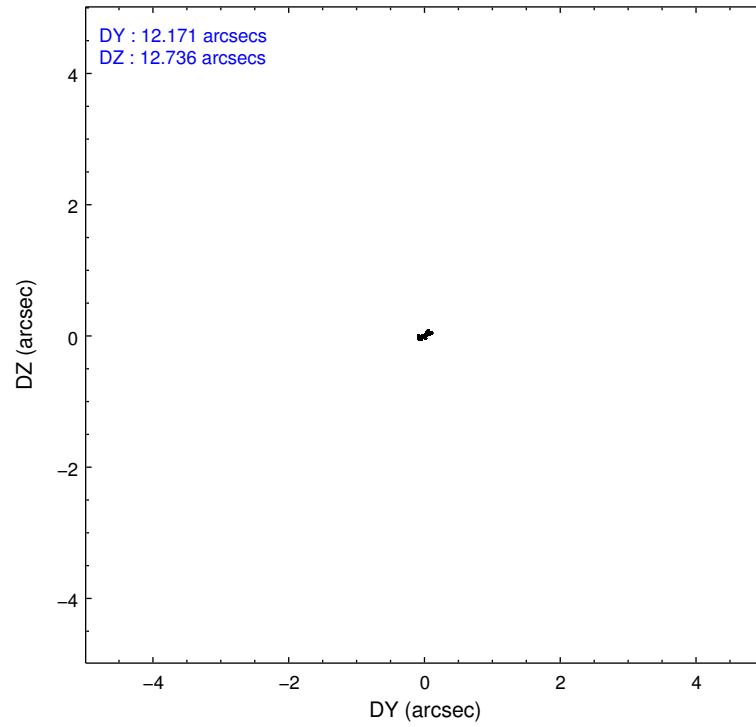
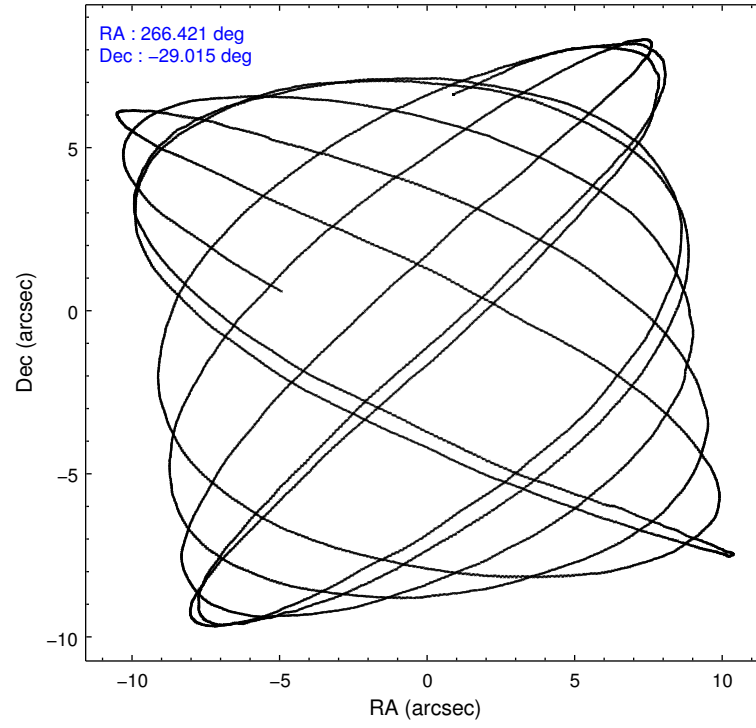
| | ccd 0 | ccd 1 | ccd 2 | ccd 3 | ccd 6 |
|-----------------|-------|-------|-------|-------|-------|
| level 1 events | 52362 | 50744 | 54881 | 60106 | 54291 |
| rejected events | 39609 | 40005 | 44572 | 44426 | 47584 |
| rejected % | 75% | 78% | 81% | 73% | 87% |

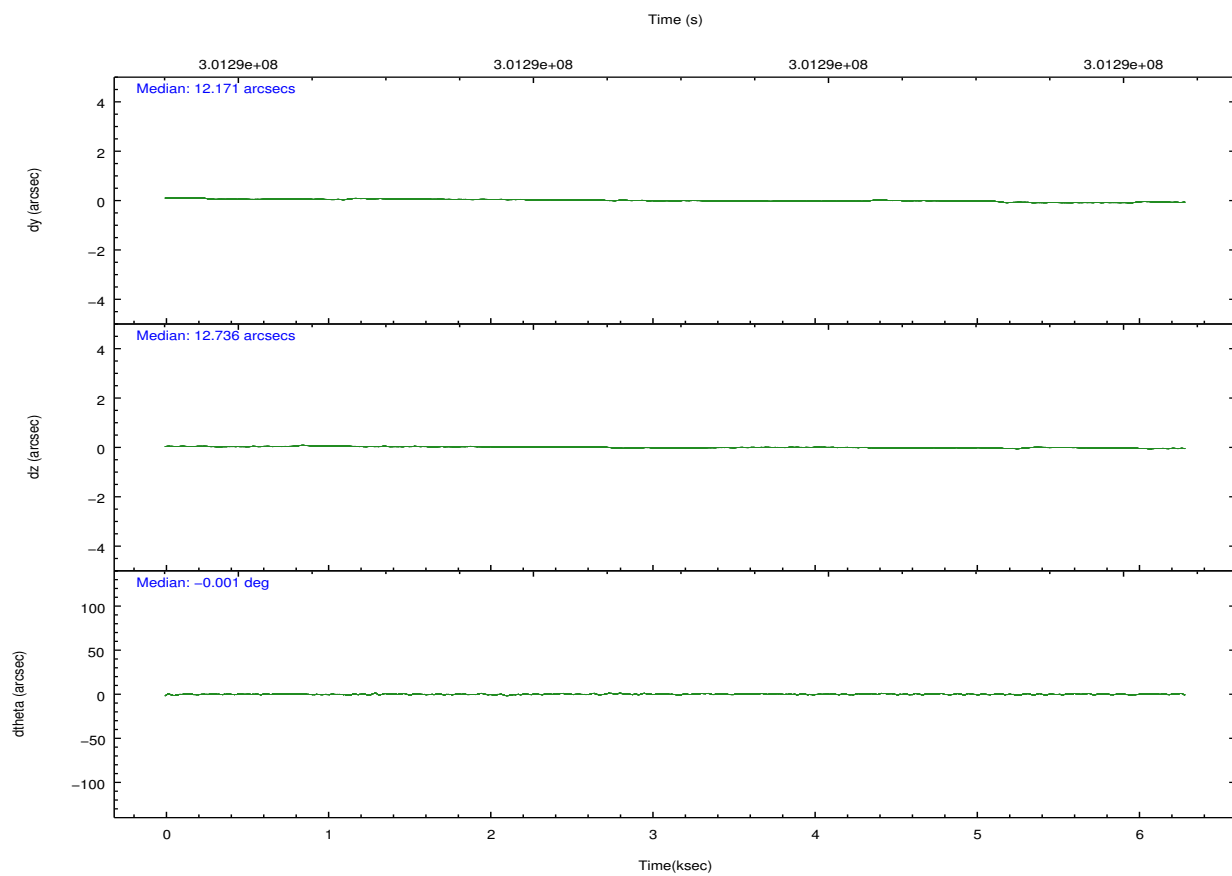
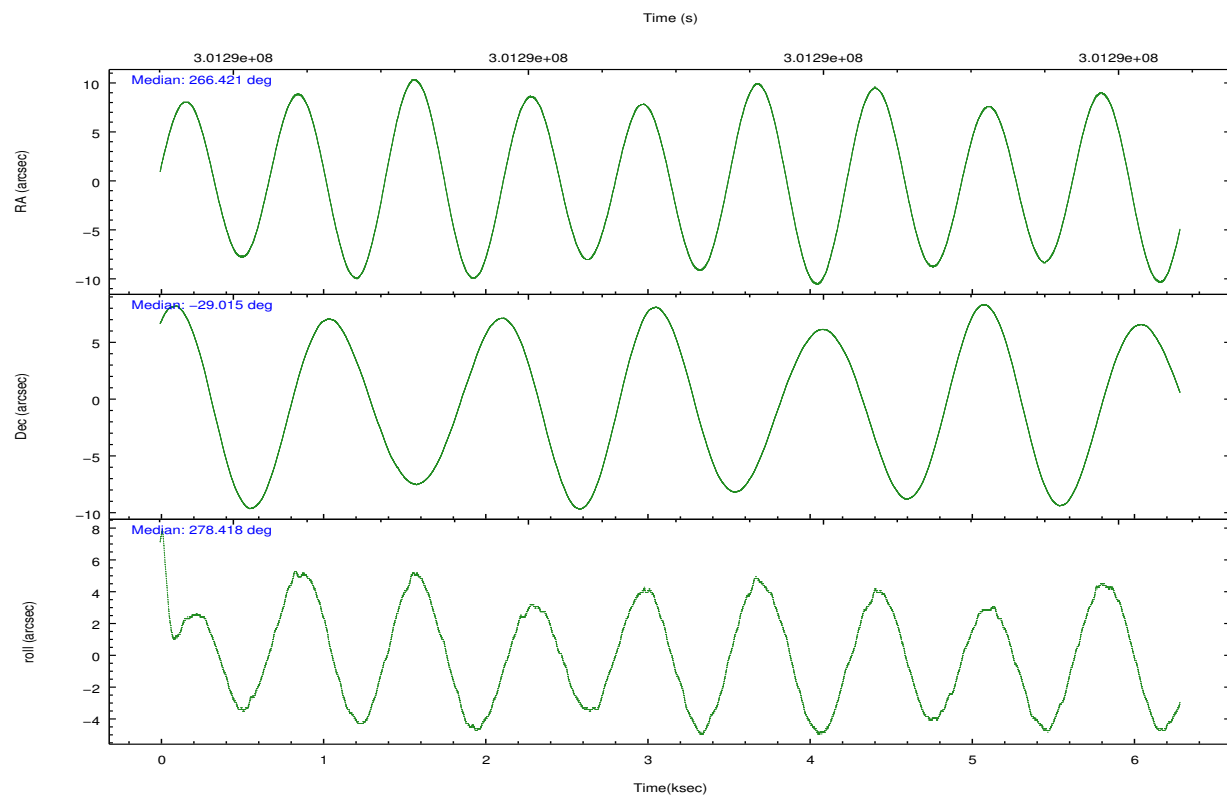
| | ccd 0 | ccd 1 | ccd 2 | ccd 3 | ccd 6 |
|----------------|-------|-------|-------|-------|-------|
| grade 0 events | 6769 | 5321 | 5750 | 9270 | 2871 |
| | 12% | 10% | 10% | 15% | 5% |
| grade 1 events | 177 | 39 | 63 | 98 | 1539 |
| | 0% | 0% | 0% | 0% | 2% |
| grade 2 events | 2331 | 2166 | 1800 | 2488 | 1450 |
| | 4% | 4% | 3% | 4% | 2% |
| grade 3 events | 943 | 850 | 715 | 1032 | 622 |
| | 1% | 1% | 1% | 1% | 1% |
| grade 4 events | 917 | 813 | 782 | 1077 | 560 |
| | 1% | 1% | 1% | 1% | 1% |
| grade 5 events | 2206 | 2108 | 1924 | 2357 | 2300 |
| | 4% | 4% | 3% | 3% | 4% |
| grade 6 events | 1803 | 1595 | 1272 | 1825 | 1208 |
| | 3% | 3% | 2% | 3% | 2% |
| grade 7 events | 37216 | 37852 | 42575 | 41959 | 43741 |
| | 71% | 74% | 77% | 69% | 80% |

2.2 Compared Parameters

| Parameter | Planned | Actual | Parameter | Planned | Actual |
|-----------------------------------|---------------------|-----------------------|---------------------------------------|-----------|---------|
| Instrument | ACIS | ACIS | Obspar format version number | 7 | 7 |
| Detector | ACIS-01236 | ACIS-01236 | Obspar file type | PREDICTED | ACTUAL |
| Grating | NONE | NONE | Obspar update status | NONE | UPDATED |
| Data mode | FAINT | FAINT | CCD I0 on | Y | Y |
| Observation mode | POINTING | POINTING | CCD I1 on | Y | Y |
| [deg] Pointing RA | 266.401040 | 266.420694931105 | CCD I2 on | Y | Y |
| [deg] Pointing Dec | -28.993583 | -29.0149759061621 | CCD I3 on | Y | Y |
| [deg] Pointing Roll | 278.200169 | 278.4183935960251 | CCD S0 on | N | N |
| [mm] SIM focus pos | -0.782348 | -0.7809083437167272 | CCD S1 on | N | N |
| [mm] SIM defocus | 0 | 0.001439871863259334 | CCD S2 on | O1 | Y |
| [mm] SIM translation stage pos | -233.592463 | -233.5874344608287 | CCD S3 on | N | N |
| [mm] SIM translation stage offset | 0 | -0.005018542100998502 | CCD S4 on | N | N |
| [s] Observation start time (MET) | 301287104.184000 | 301285621.79136 | CCD S5 on | N | N |
| Observation start date | 2007-07-20T02:50:39 | 2007-07-20T02:27:01 | Number of optional ACIS chips dropped | 0 | 0 |
| [s] Observation end time (MET) | 301292104.184000 | 301292986.92921 | On-chip summing requested | N | N |
| Observation end date | 2007-07-20T04:13:59 | 2007-07-20T04:29:46 | Subarray requested | NONE | NONE |
| Read mode | TIMED | TIMED | Alternating exposures requested | N | N |
| | | | [s] Primary exposure time | 0.000000 | 3.1 |

2.3 Aspect



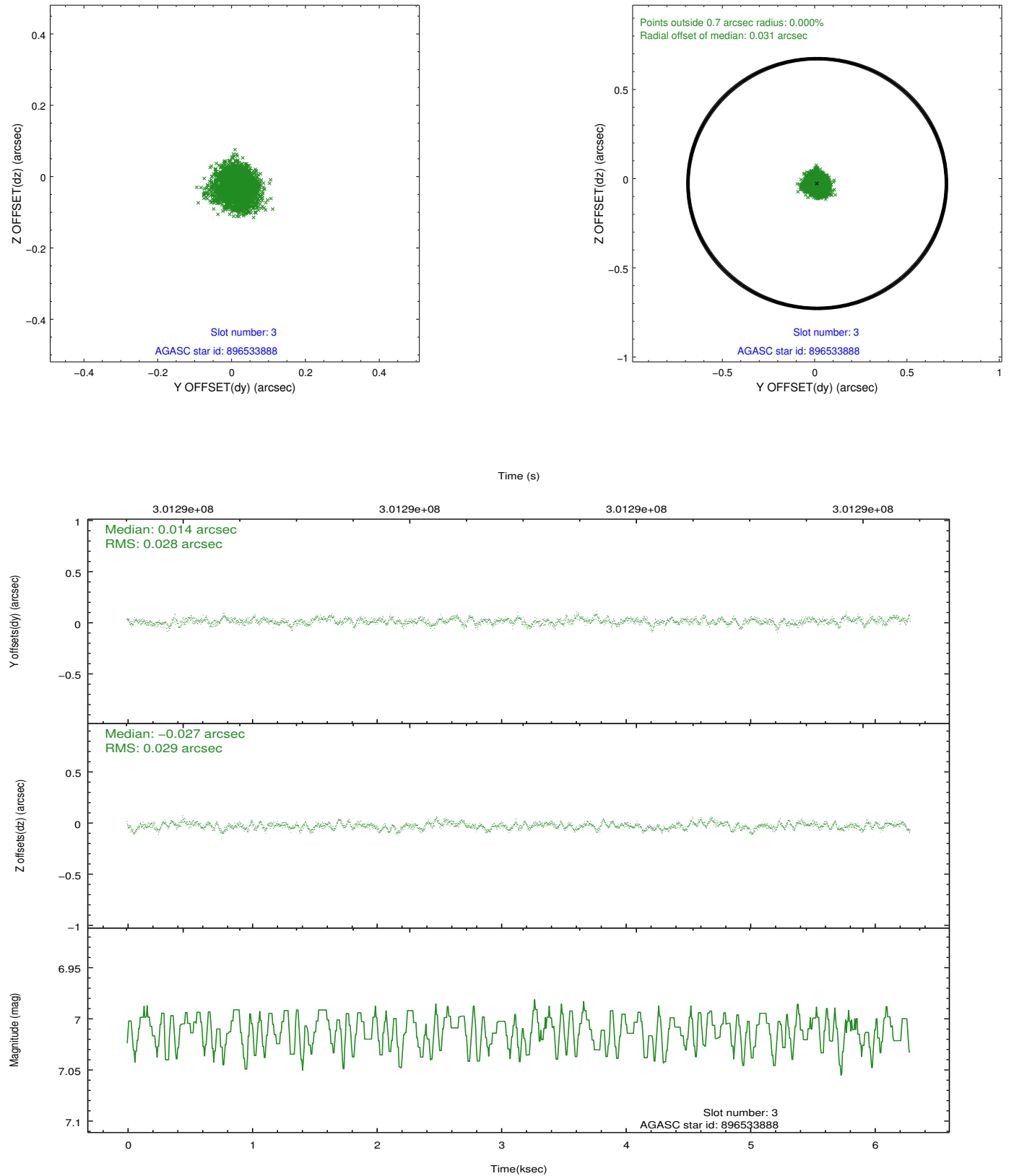


Slot Statistics

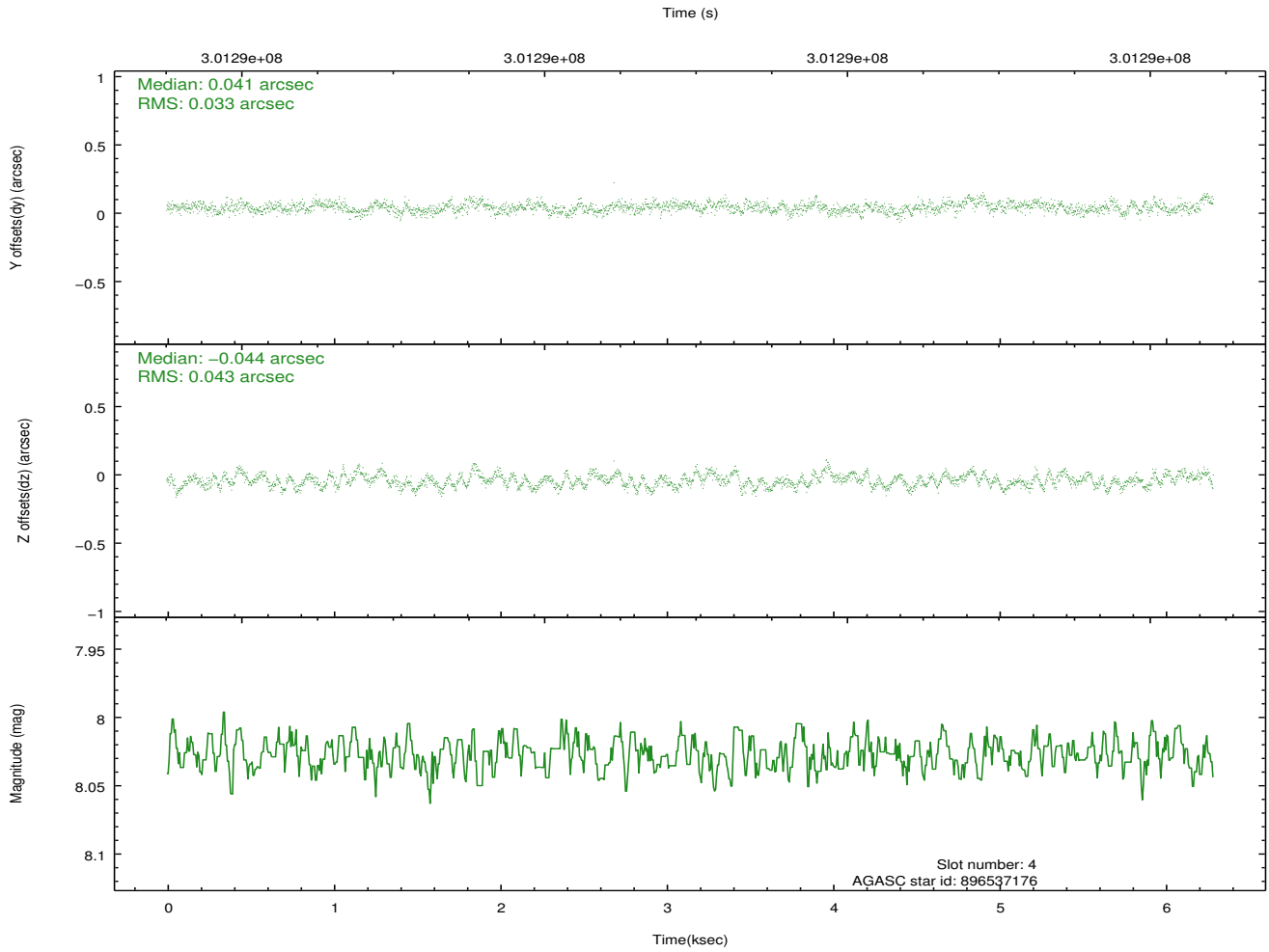
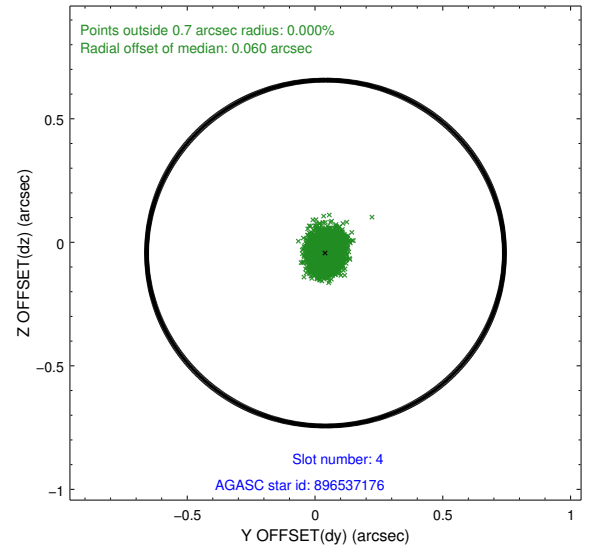
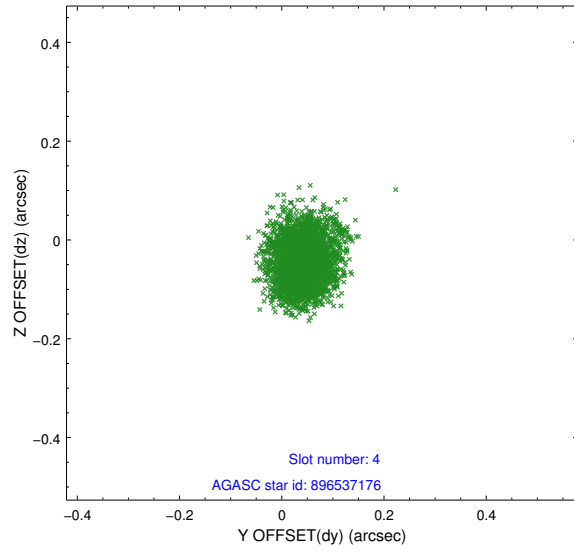
| slot | status | id | mag | n_pts | med_dy | med_dz | dr1 | dr2 | ra | dec | mean_y | mean_z |
|------|--------|-----------|------|-------|--------|--------|-------|-------|------------|------------|----------|----------|
| 0 | FID | ACIS-I-1 | 7.23 | 1534 | 0.054 | -0.015 | 0.006 | 0.012 | 0.000000 | 0.000000 | 927.41 | -836.30 |
| 1 | FID | ACIS-I-5 | 7.23 | 1534 | -0.210 | 0.060 | 0.006 | 0.010 | 0.000000 | 0.000000 | -1820.43 | 1060.82 |
| 2 | FID | ACIS-I-6 | 7.24 | 1534 | 0.064 | 0.024 | 0.007 | 0.012 | 0.000000 | 0.000000 | 391.97 | 1706.33 |
| 3 | GUIDE | 896533888 | 7.01 | 3069 | 0.014 | -0.027 | 0.043 | 0.070 | 266.666434 | -29.392757 | 1542.47 | 618.82 |
| 4 | GUIDE | 896537176 | 8.03 | 3069 | 0.041 | -0.044 | 0.059 | 0.094 | 266.498272 | -28.678259 | -1078.63 | 466.00 |
| 5 | GUIDE | 896541360 | 7.72 | 3069 | 0.040 | 0.041 | 0.052 | 0.104 | 266.684478 | -29.453744 | 1767.58 | 643.20 |
| 6 | GUIDE | 896404568 | 7.86 | 3066 | -0.023 | 0.083 | 0.061 | 0.096 | 265.687293 | -28.431080 | -2318.92 | -1948.46 |
| 7 | GUIDE | 896538840 | 8.91 | 3066 | -0.073 | -0.053 | 0.070 | 0.115 | 266.920426 | -28.466925 | -1638.31 | 1896.22 |

2.4 Star Slots

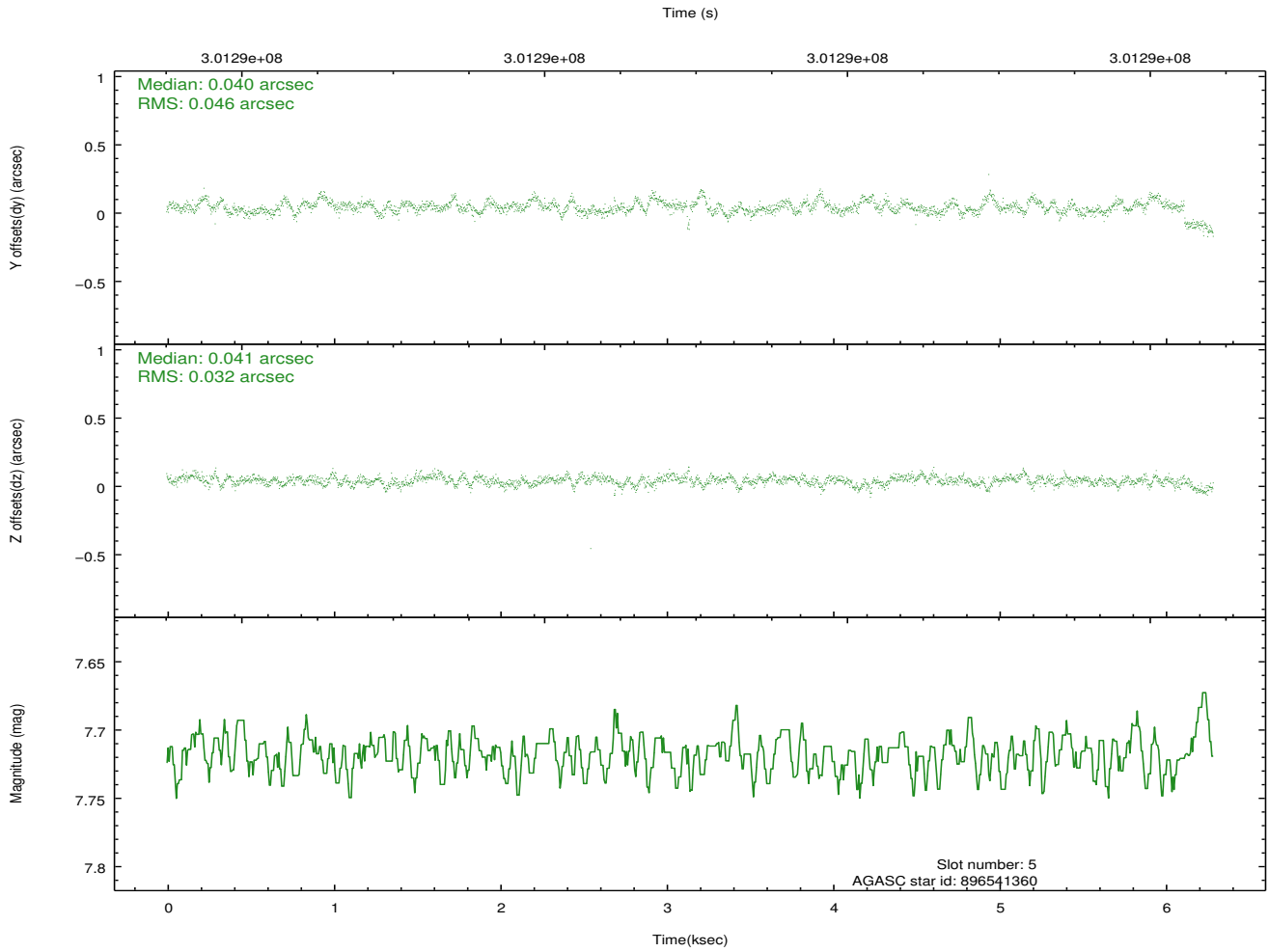
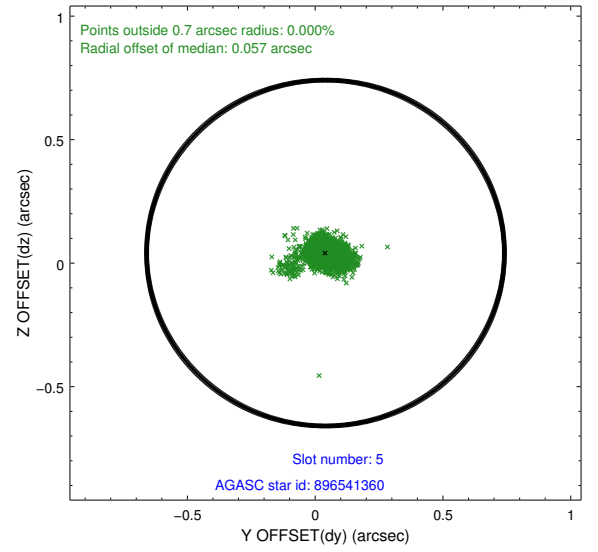
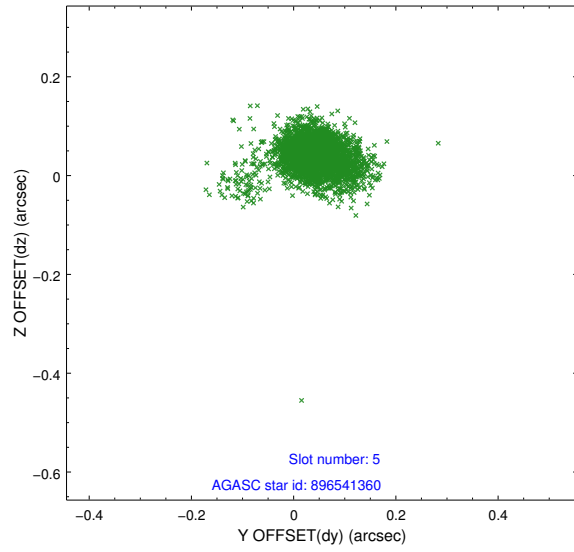
2.4.1 Slot 3



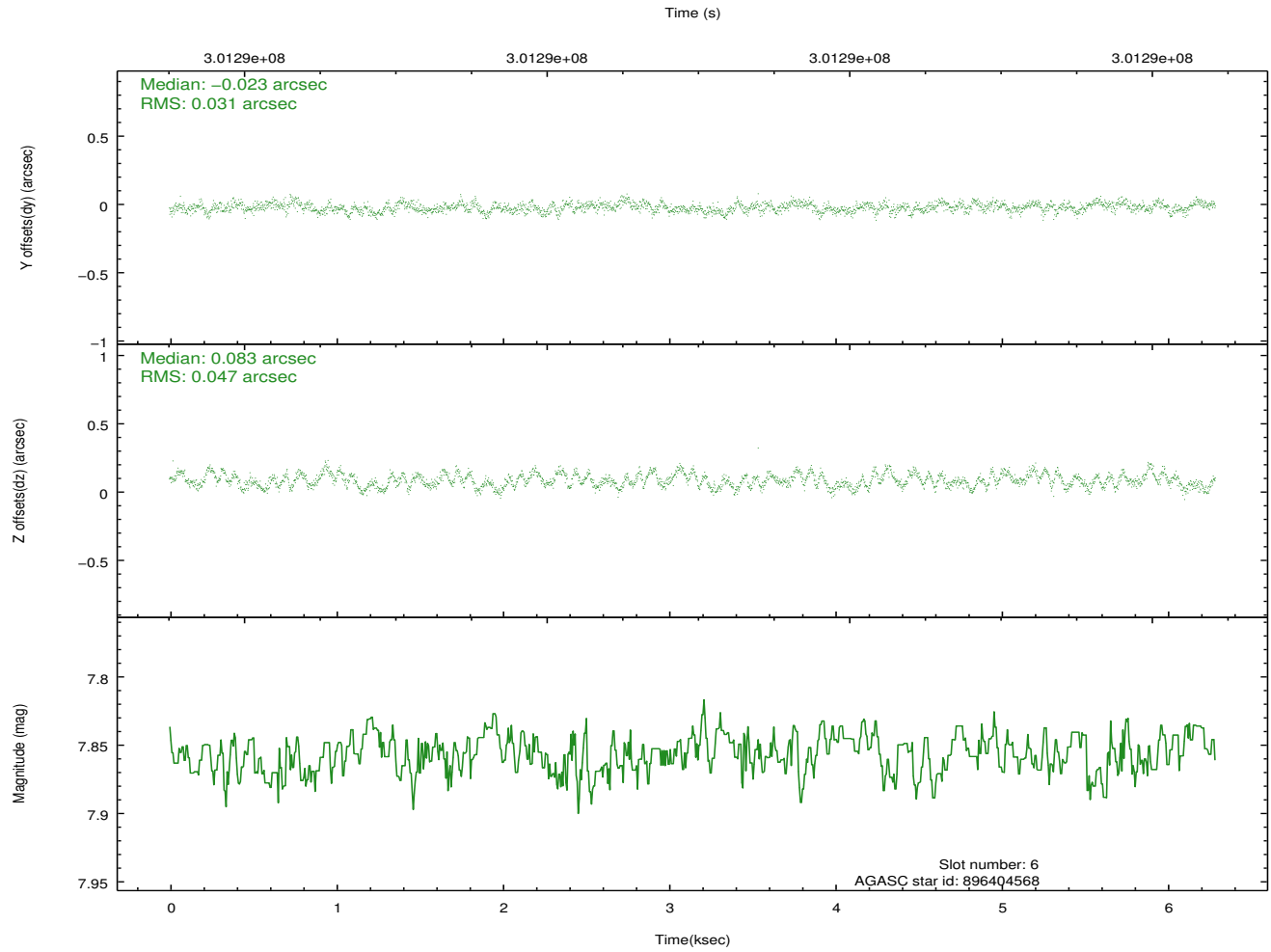
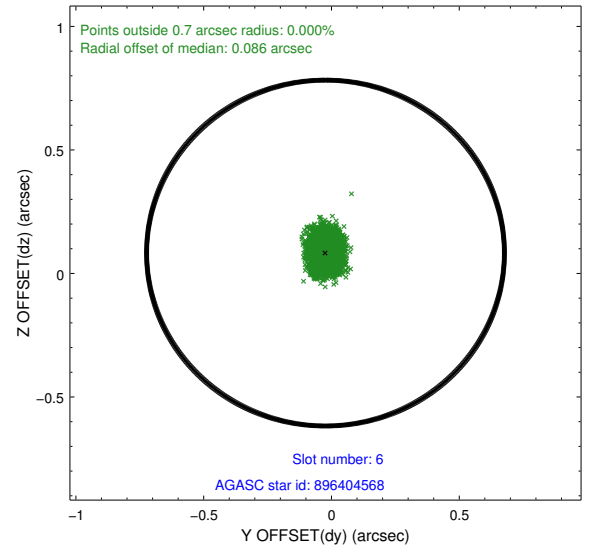
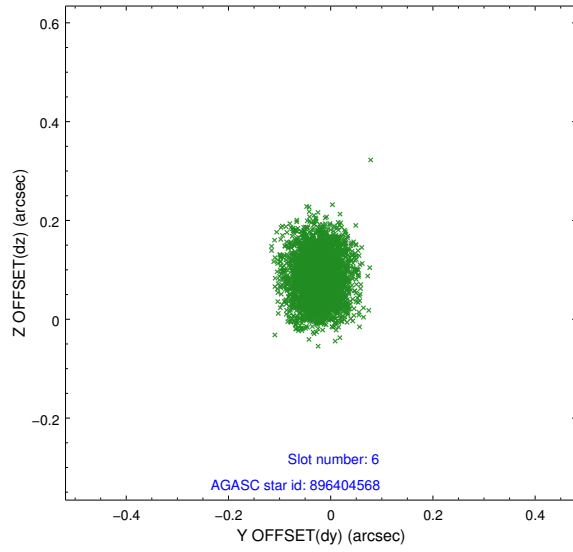
2.4.2 Slot 4



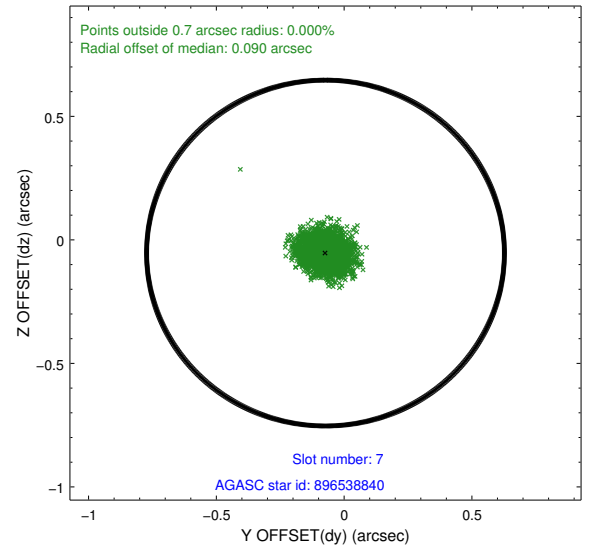
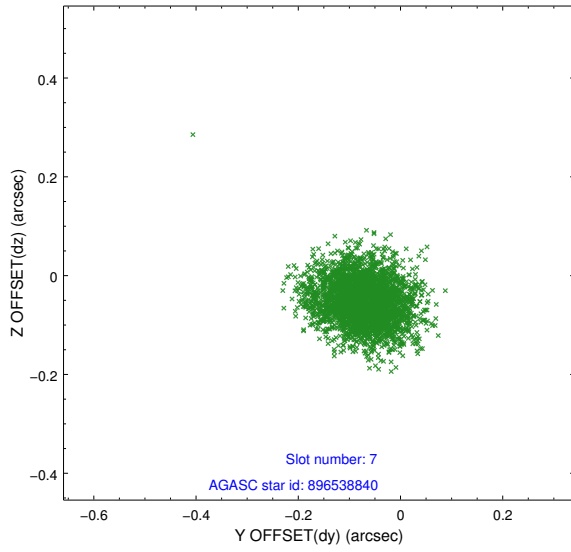
2.4.3 Slot 5



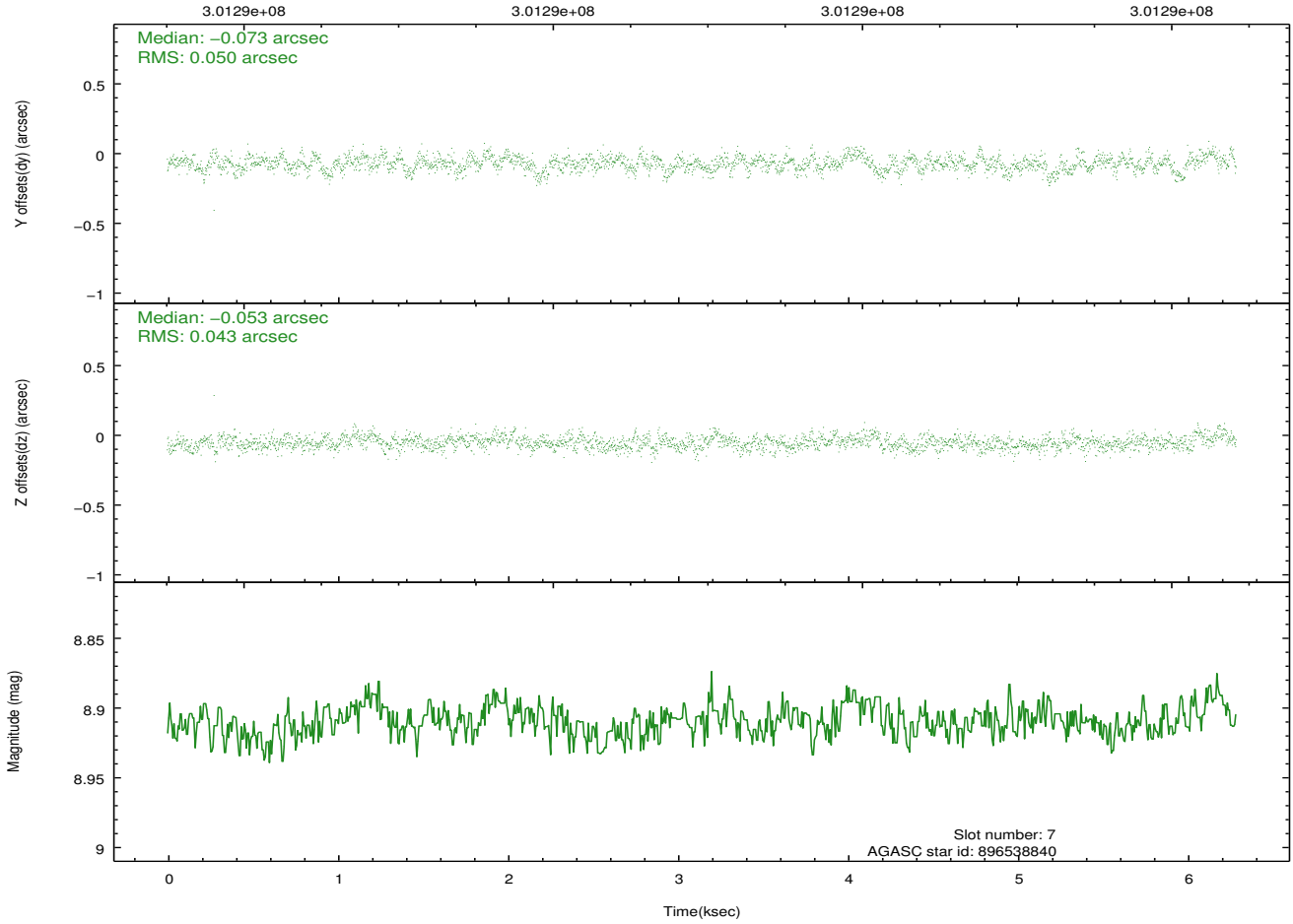
2.4.4 Slot 6



2.4.5 Slot 7

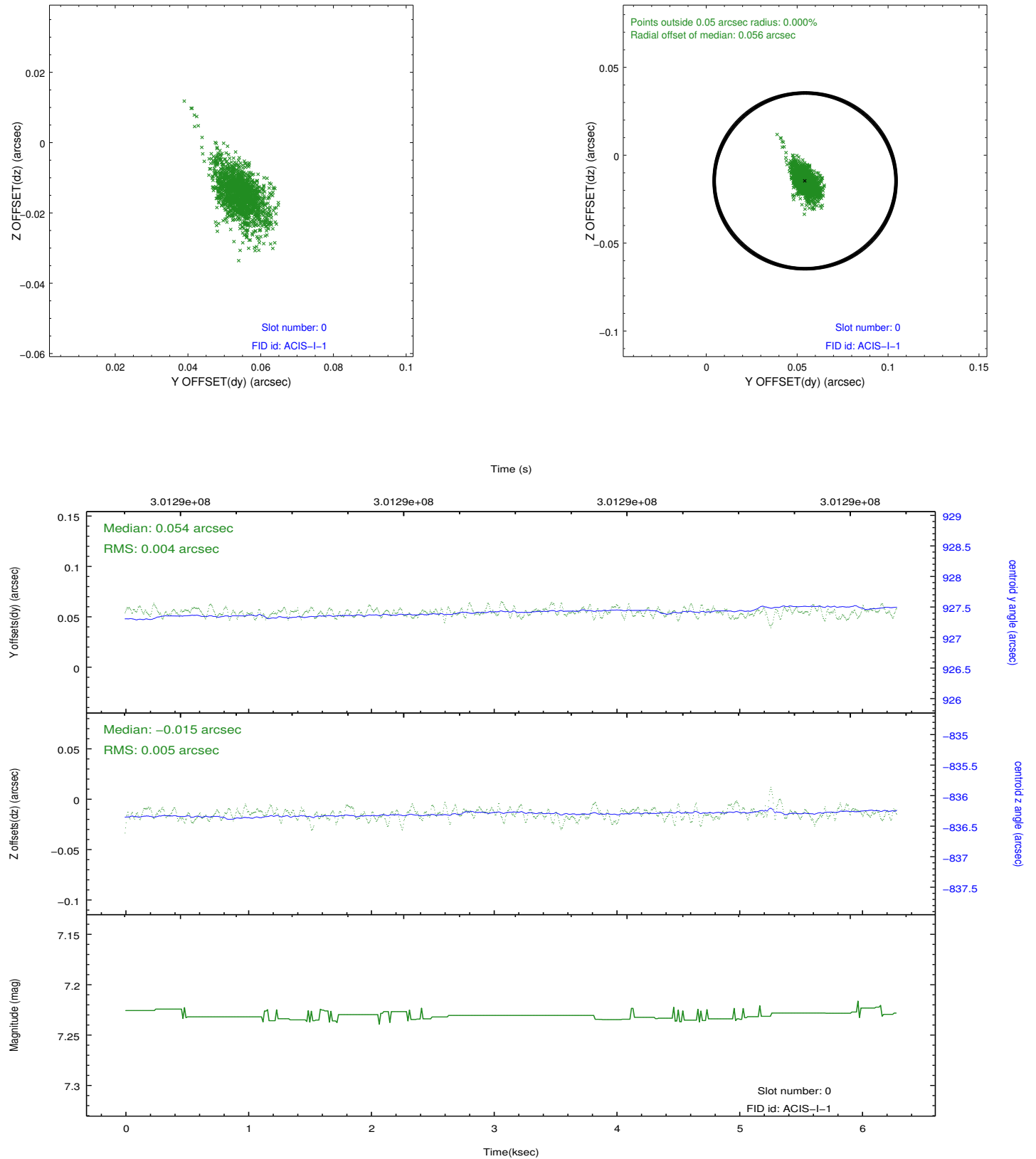


Time (s)

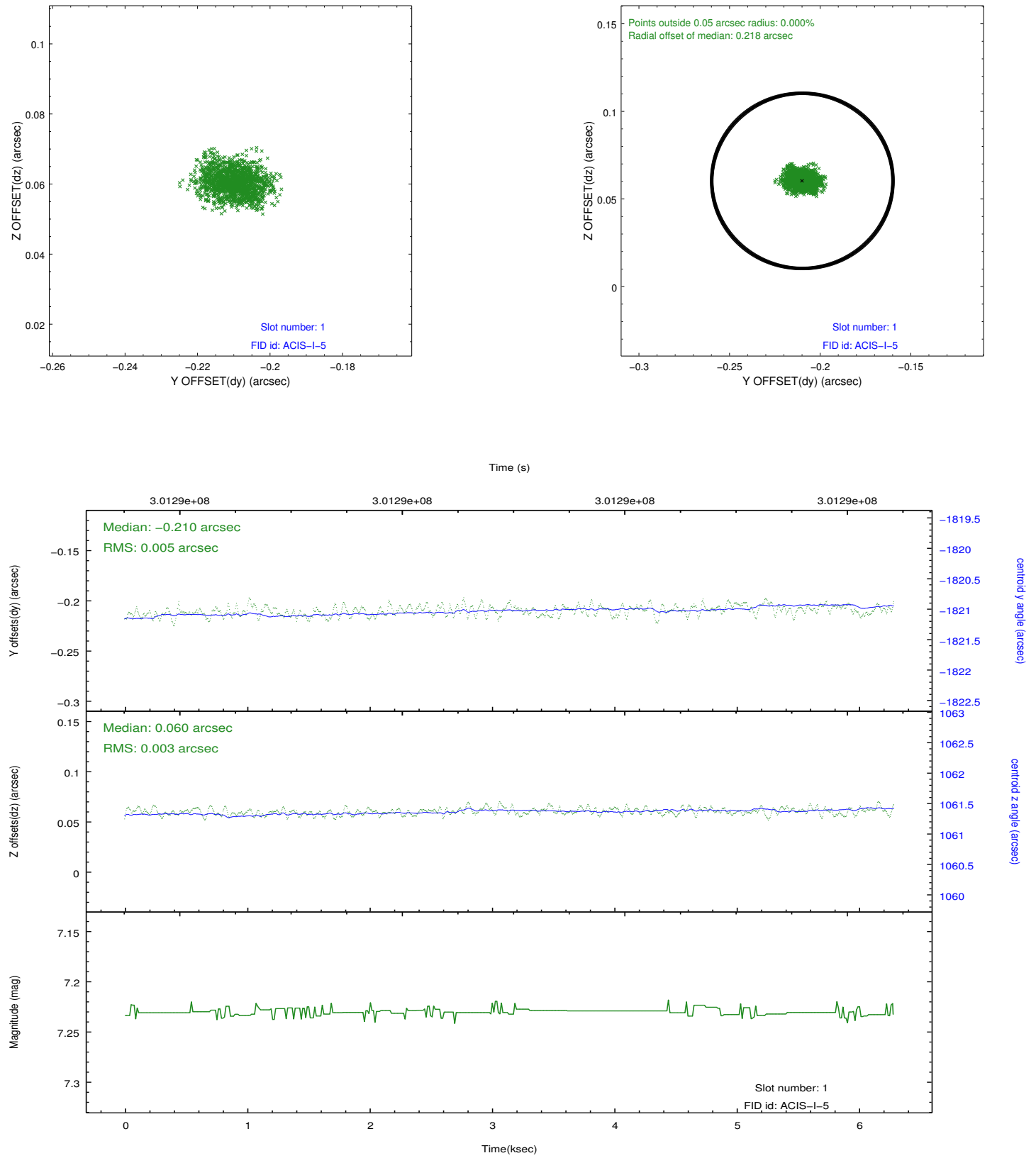


2.5 FID Slots

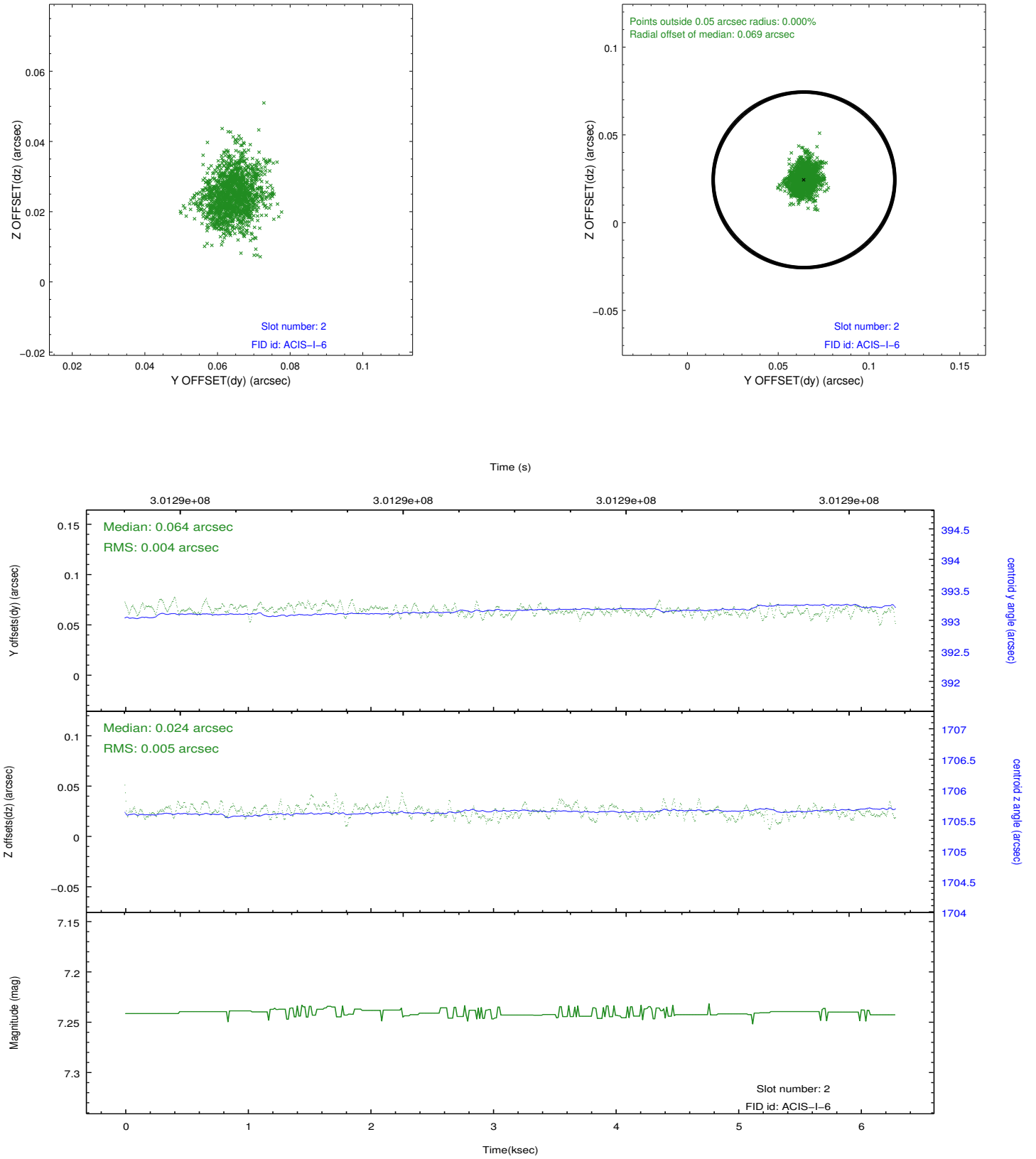
2.5.1 Slot 0



2.5.2 Slot 1



2.5.3 Slot 2



A Summary

A.1 Status

| | |
|----------------------------|------------|
| V&V Scientist | Jen Lauer |
| V&V Date (YYYY-MM-DD) | 2012.04.30 |
| V&V Edition | 1 |
| V&V Disposition and Status | OK |
| V&V Charge Time | 5.04680003 |

A.2 Comments

Monitor constraint met, follows obs7556 by 64 days.