

V&V Reference Report

L2 ASCDS Version : 8.4.4

Observation 7527 - L2 Version 2
Chandra X-Ray Center

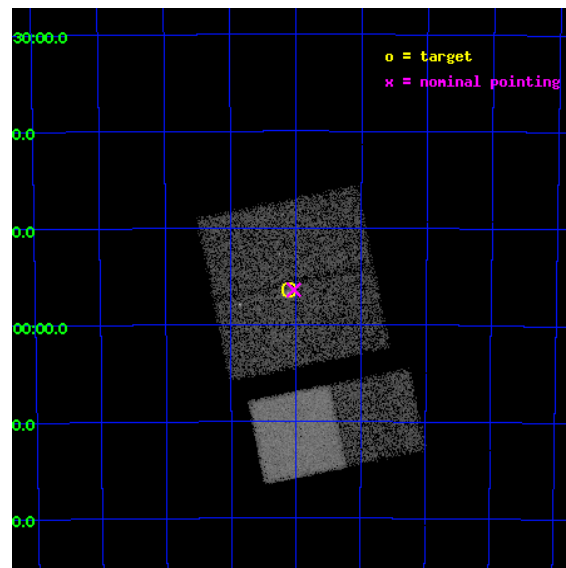
L2 Processing Date : May 1 2012

Contents

1	Front	2
2	OBI	3
2.1	OBI	3
2.1.1	Images	3
2.1.2	Bias	3
2.1.3	Parameters	4
2.1.4	Events	4
2.2	Compared Parameters	5
2.3	Aspect	6
2.4	Star Slots	9
2.4.1	Slot 3	9
2.4.2	Slot 4	10
2.4.3	Slot 5	11
2.4.4	Slot 6	12
2.4.5	Slot 7	13
2.5	FID Slots	14
2.5.1	Slot 0	14
2.5.2	Slot 1	15
2.5.3	Slot 2	16
A	Summary	17
A.1	Status	17
A.2	Comments	17

1 Front

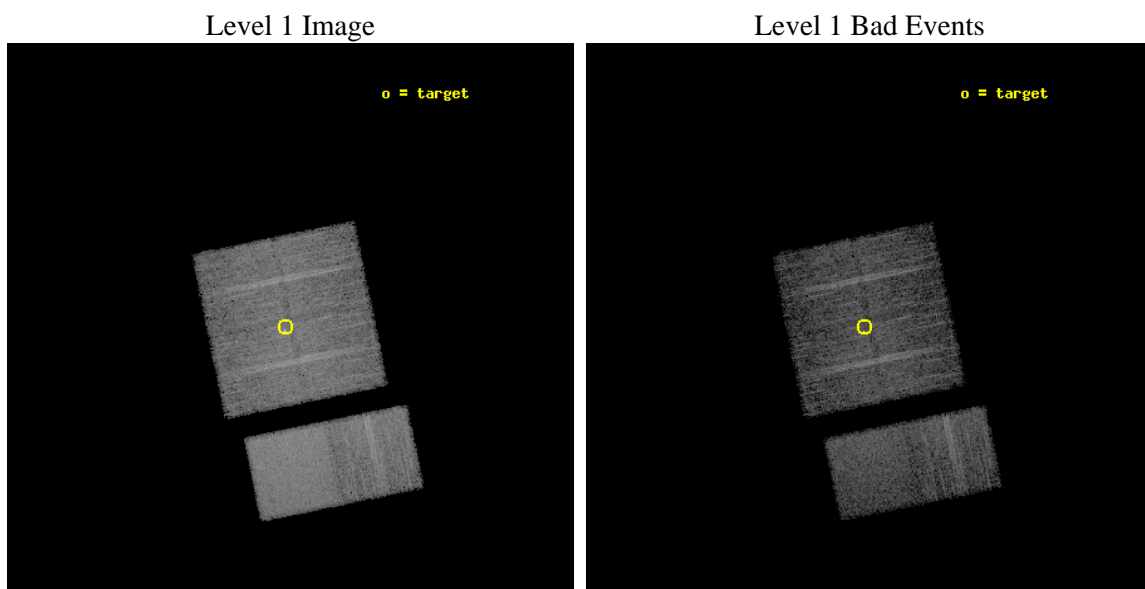
seq_num	400637	Sequence number
obs_id	7527	Observation id
title	Localization and Spectra of INTEGRAL-Selected Sources in the Galactic Plane	Proposal title
observer	Dr. John Tomsick	Principal investigator
object	IGR J11305-6256	Source name
dtcycle	0	
cycle	P	events from which exps? Prim/Second/Both
ra_targ	172.775	Observer's specified target RA [deg]
dec_targ	-62.939	Observer's specified target Dec [deg]
ra_nom	172.75772099113	Nominal RA [deg]
dec_nom	-62.940138182631	Nominal Dec [deg]
roll_nom	168.40782842673	Nominal Roll [deg]
revision	2	Processing version of data
ontime	5123.1999809742	Sum of GTIs [s]
livetime	5058.3269379944	Livetime [s]
ontime0	5123.1999809742	Sum of GTIs [s]
ontime1	5123.1999809742	Sum of GTIs [s]
ontime2	5123.1999809742	Sum of GTIs [s]
ontime3	5123.1999809742	Sum of GTIs [s]
ontime6	5123.1999809742	Sum of GTIs [s]
ontime7	5123.1999809742	Sum of GTIs [s]
l2events	55748	Number of level 2 events



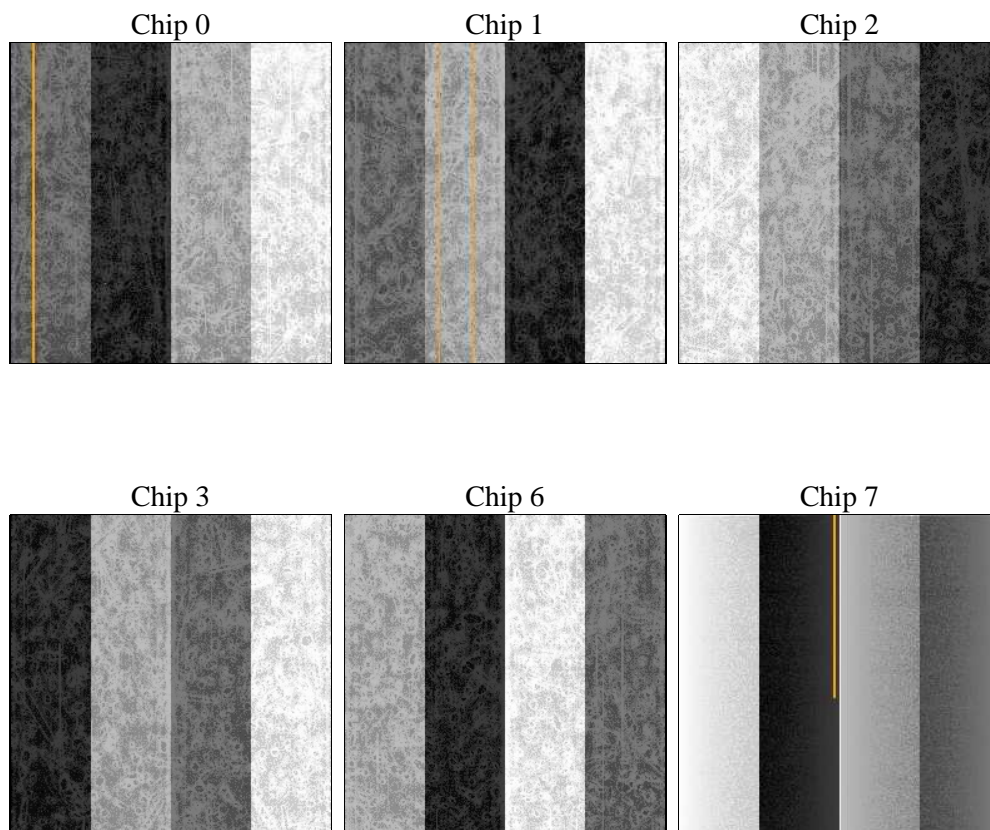
2 OBI

2.1 OBI

2.1.1 Images



2.1.2 Bias



2.1.3 Parameters

obi_num	1	Obi number	sched_exp_time	5000.000000	[s] Scheduled observation exposure time
ascdsver	8.4.4	Processing system revision	ontime	5123.1999809742	Sum of GTIs [s]
caldbver	4.4.9	 	ontime0	5123.1999809742	Sum of GTIs [s]
date	2012-05-01T21:44:26	Date and time of file creation	ontime1	5123.1999809742	Sum of GTIs [s]
revision	2	Processing version of data	ontime2	5123.1999809742	Sum of GTIs [s]
			ontime3	5123.1999809742	Sum of GTIs [s]
			ontime6	5123.1999809742	Sum of GTIs [s]
			ontime7	5123.1999809742	Sum of GTIs [s]
			l1events	344193	Number of level 1 events

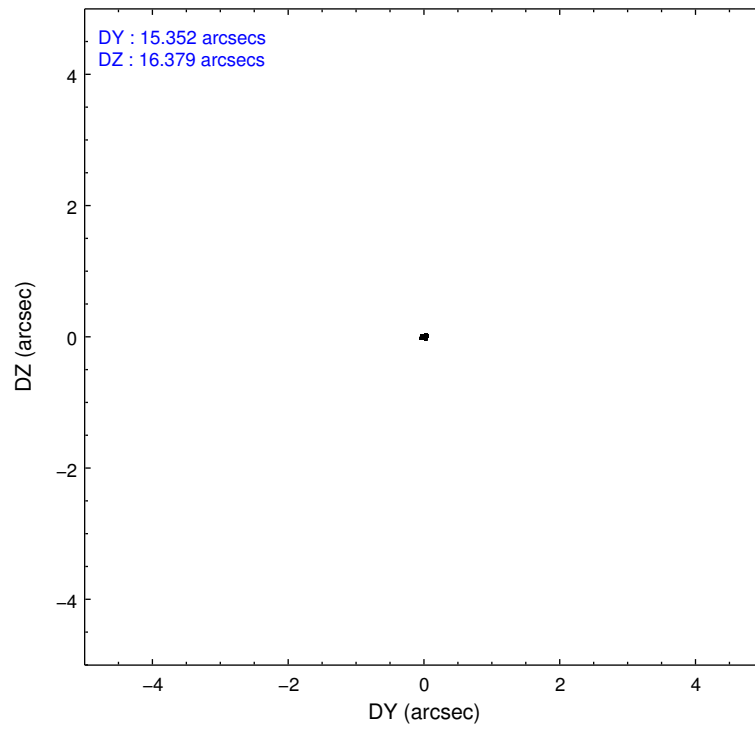
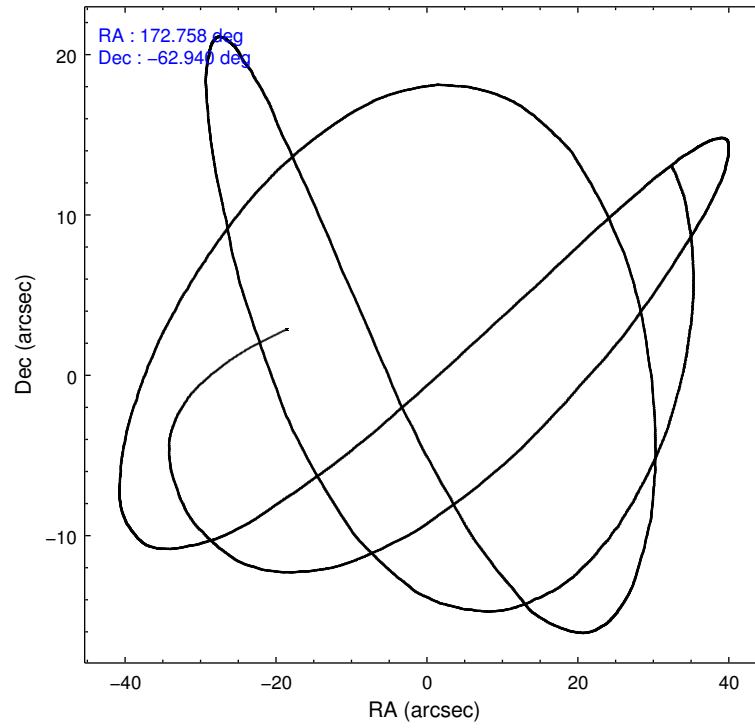
2.1.4 Events

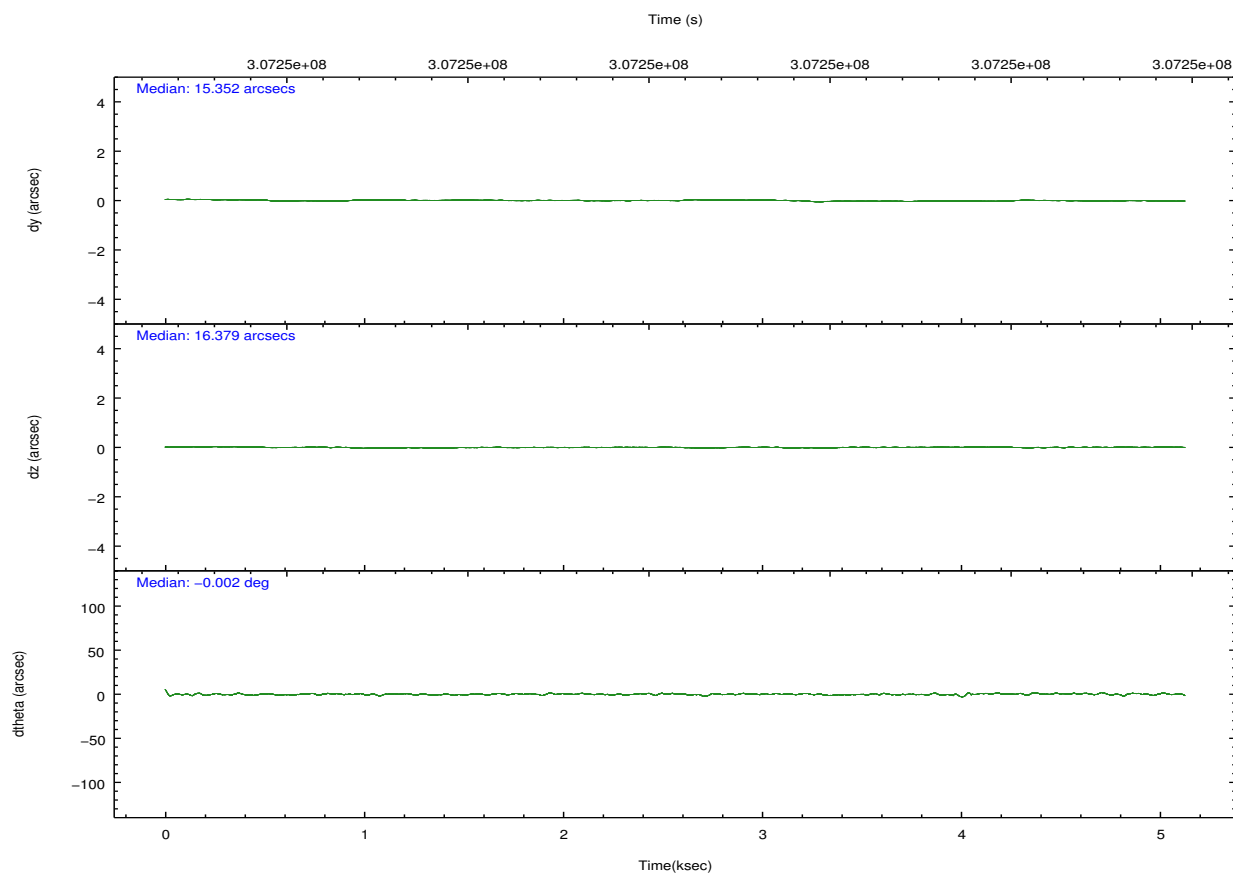
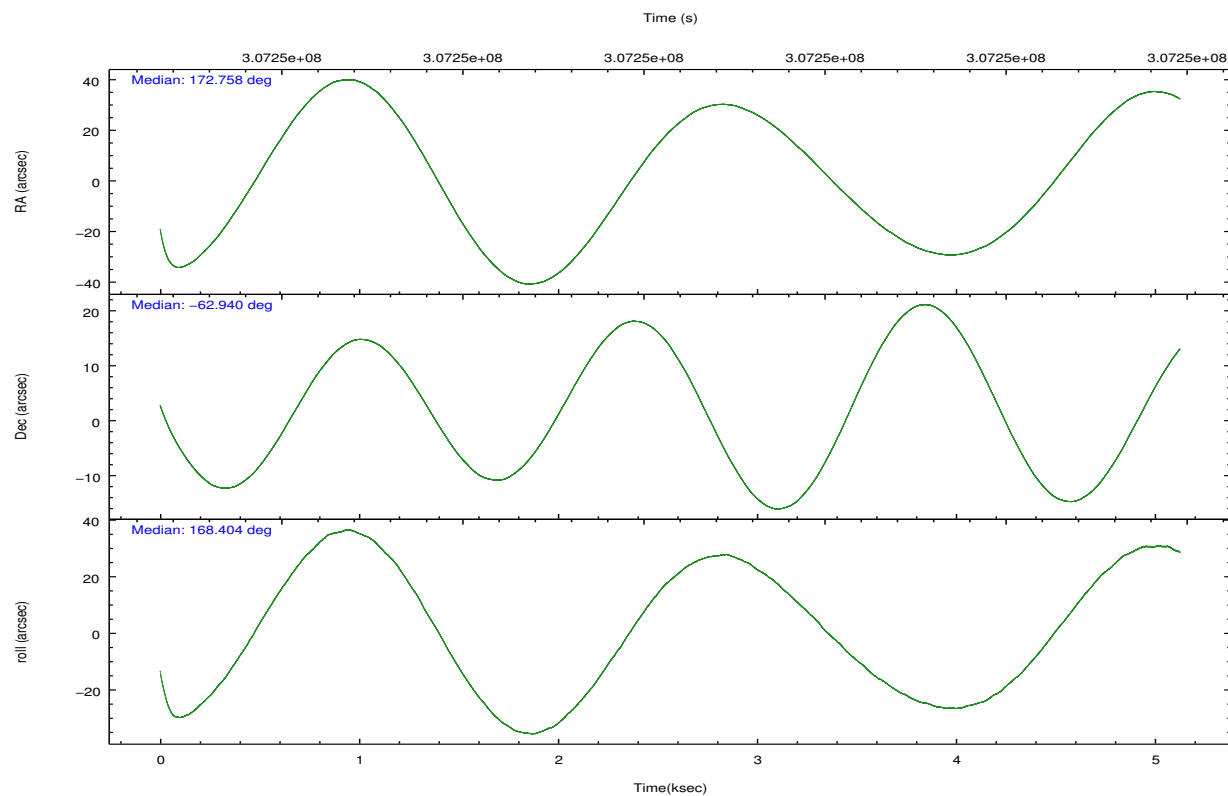
	ccd 0	ccd 1	ccd 2	ccd 3	ccd 6	ccd 7		ccd 0	ccd 1	ccd 2	ccd 3	ccd 6	ccd 7
level 1 events	49459	49549	54791	56991	57990	75413	grade 0 events	2995	2834	3037	3777	2551	2646
rejected events	43339	43121	48766	49419	51927	46967		6%	5%	5%	6%	4%	3%
rejected %	87%	87%	89%	86%	89%	62%	grade 1 events	27	28	31	215	35	72
								0%	0%	0%	0%	0%	0%
							grade 2 events	1516	1612	1373	1680	1502	6386
								3%	3%	2%	2%	2%	8%
							grade 3 events	572	612	611	718	647	2761
								1%	1%	1%	1%	1%	3%
							grade 4 events	578	680	626	739	641	2643
								1%	1%	1%	1%	1%	3%
							grade 5 events	2192	2348	2188	2774	2572	7126
								4%	4%	3%	4%	4%	9%
							grade 6 events	1168	1404	1047	1454	1398	16985
								2%	2%	1%	2%	2%	22%
							grade 7 events	40411	40031	45878	45634	48644	36794
								81%	80%	83%	80%	83%	48%

2.2 Compared Parameters

Parameter	Planned	Actual	Parameter	Planned	Actual
Instrument	ACIS	ACIS	Obspar format version number	7	7
Detector	ACIS-012367	ACIS-012367	Obspar file type	PREDICTED	ACTUAL
Grating	NONE	NONE	Obspar update status	NONE	UPDATED
Data mode	FAINT	FAINT	CCD I0 on	Y	Y
Observation mode	POINTING	POINTING	CCD I1 on	Y	Y
[deg] Pointing RA	172.814577	172.7577209911344	CCD I2 on	Y	Y
[deg] Pointing Dec	-62.930999	-62.94013818263098	CCD I3 on	Y	Y
[deg] Pointing Roll	168.249776	168.4078284267254	CCD S0 on	N	N
[mm] SIM focus pos	-0.782348	-0.7809083437167272	CCD S1 on	N	N
[mm] SIM defocus	0	0.001439871863259334	CCD S2 on	O1	Y
[mm] SIM translation stage pos	-233.592463	-233.5874344608287	CCD S3 on	O2	Y
[mm] SIM translation stage offset	0	-0.005018542100998502	CCD S4 on	N	N
[s] Observation start time (MET)	307247707.184000	307246391.19029	CCD S5 on	N	N
Observation start date	2007-09-27T02:34:02	2007-09-27T02:13:11	Number of optional ACIS chips dropped	0	0
[s] Observation end time (MET)	307252707.184000	307254017.70316	On-chip summing requested	N	N
Observation end date	2007-09-27T03:57:22	2007-09-27T04:20:17	Subarray requested	NONE	NONE
Read mode	TIMED	TIMED	Alternating exposures requested	N	N
			[s] Primary exposure time	0.000000	3.2

2.3 Aspect



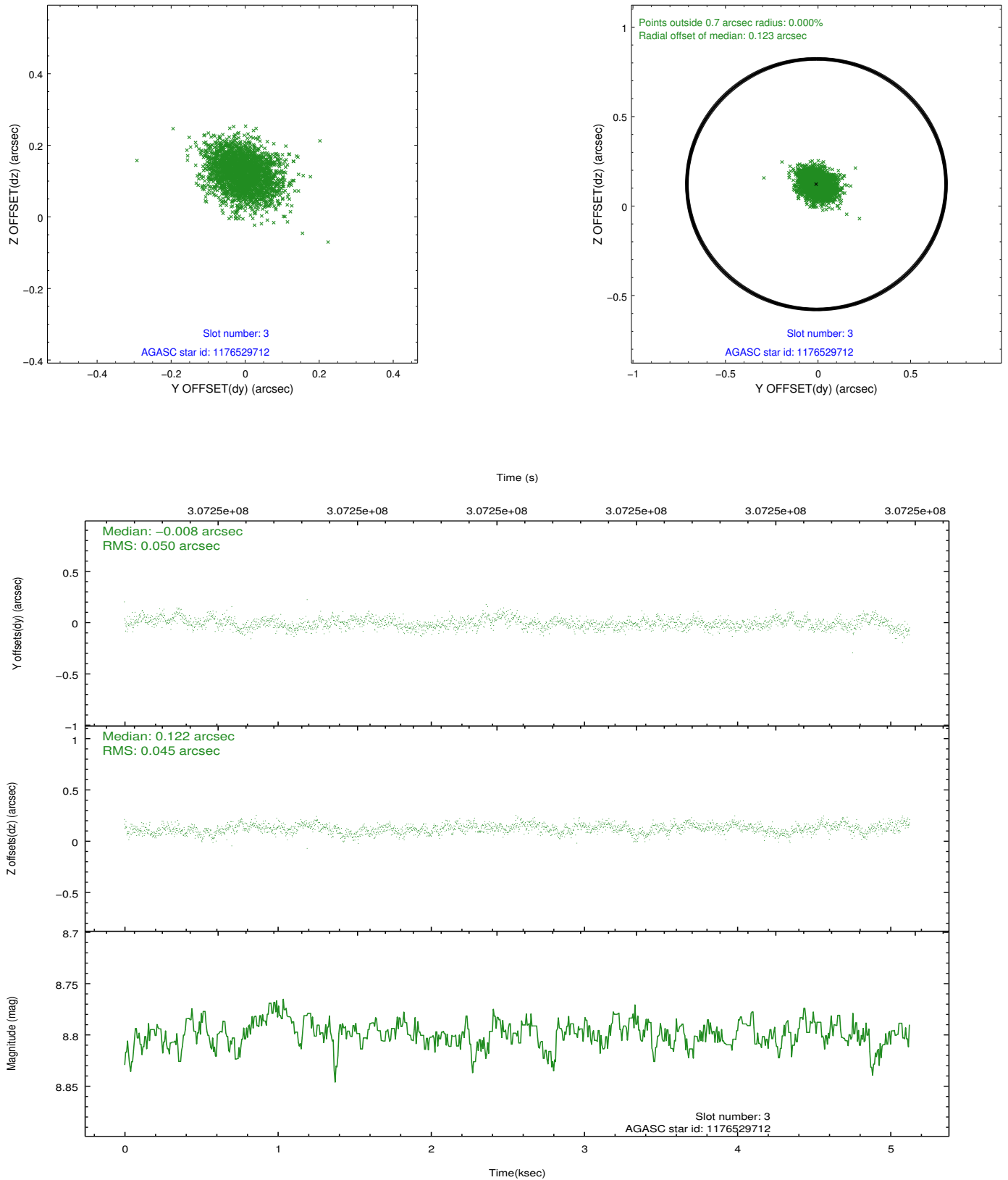


Slot Statistics

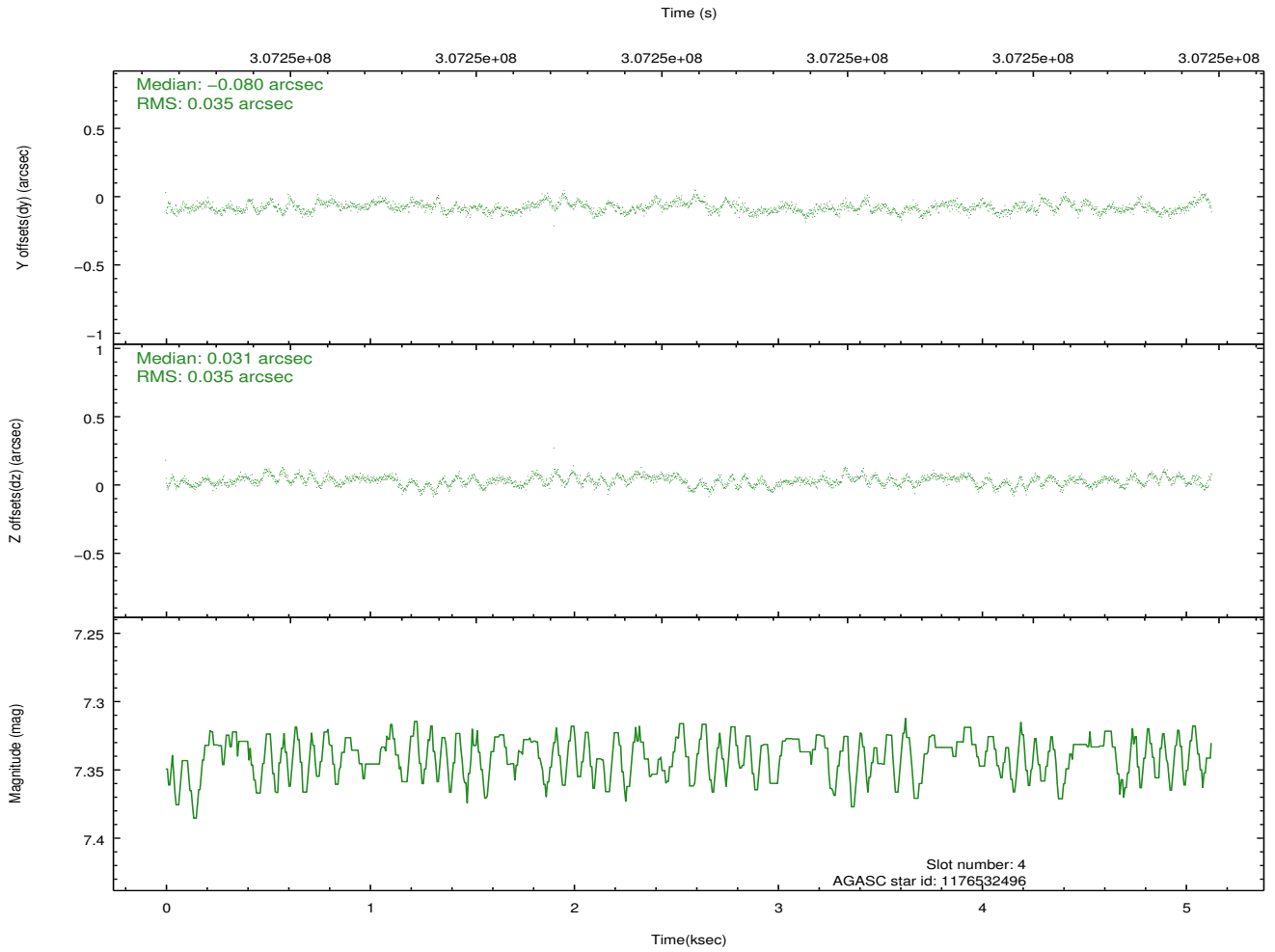
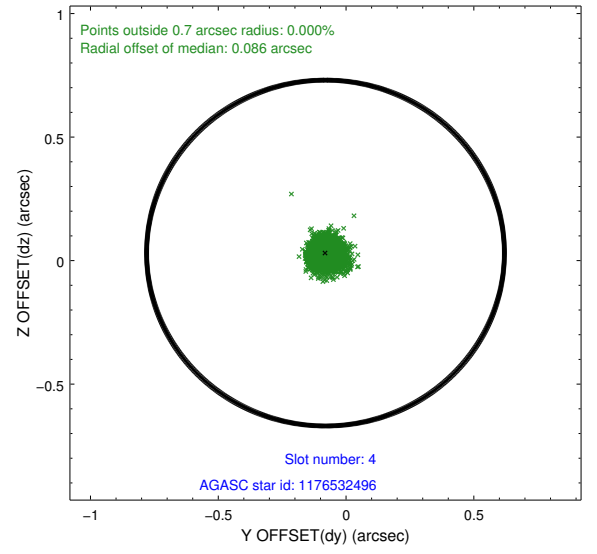
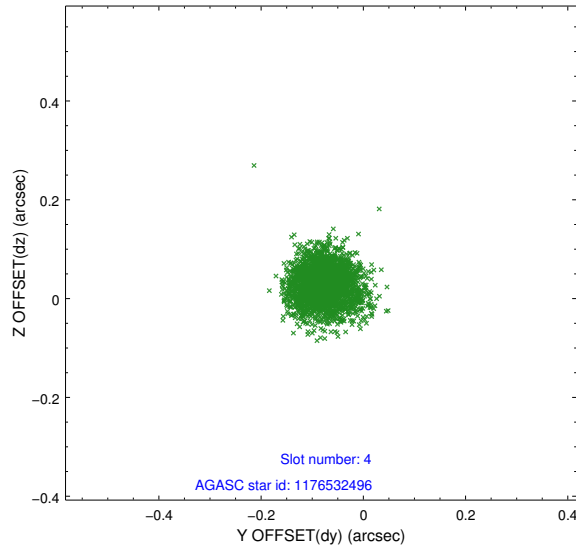
slot	status	id	mag	n_pts	med_dy	med_dz	dr1	dr2	ra	dec	mean_y	mean_z
0	FID	ACIS-I-2	7.14	1250	-0.069	-0.079	0.010	0.020	0.000000	0.000000	-770.15	-846.45
1	FID	ACIS-I-4	7.15	1251	0.156	0.065	0.006	0.011	0.000000	0.000000	2143.60	1059.25
2	FID	ACIS-I-5	7.22	1251	-0.188	0.082	0.009	0.015	0.000000	0.000000	-1822.57	1058.49
3	GUIDE	1176529712	8.80	2499	-0.008	0.122	0.071	0.115	171.656991	-62.572106	2139.91	-857.98
4	GUIDE	1176532496	7.34	2501	-0.080	0.031	0.053	0.084	174.266665	-62.485362	-2041.23	-2037.37
5	GUIDE	1174801488	8.44	2502	0.175	0.061	0.065	0.109	171.118367	-63.342222	2373.41	2041.07
6	GUIDE	1174799952	7.57	2501	0.012	-0.089	0.060	0.103	171.230148	-63.432111	2125.53	2316.37
7	GUIDE	1176526312	8.19	2499	-0.109	-0.122	0.051	0.086	173.847294	-63.450373	-2008.45	1504.74

2.4 Star Slots

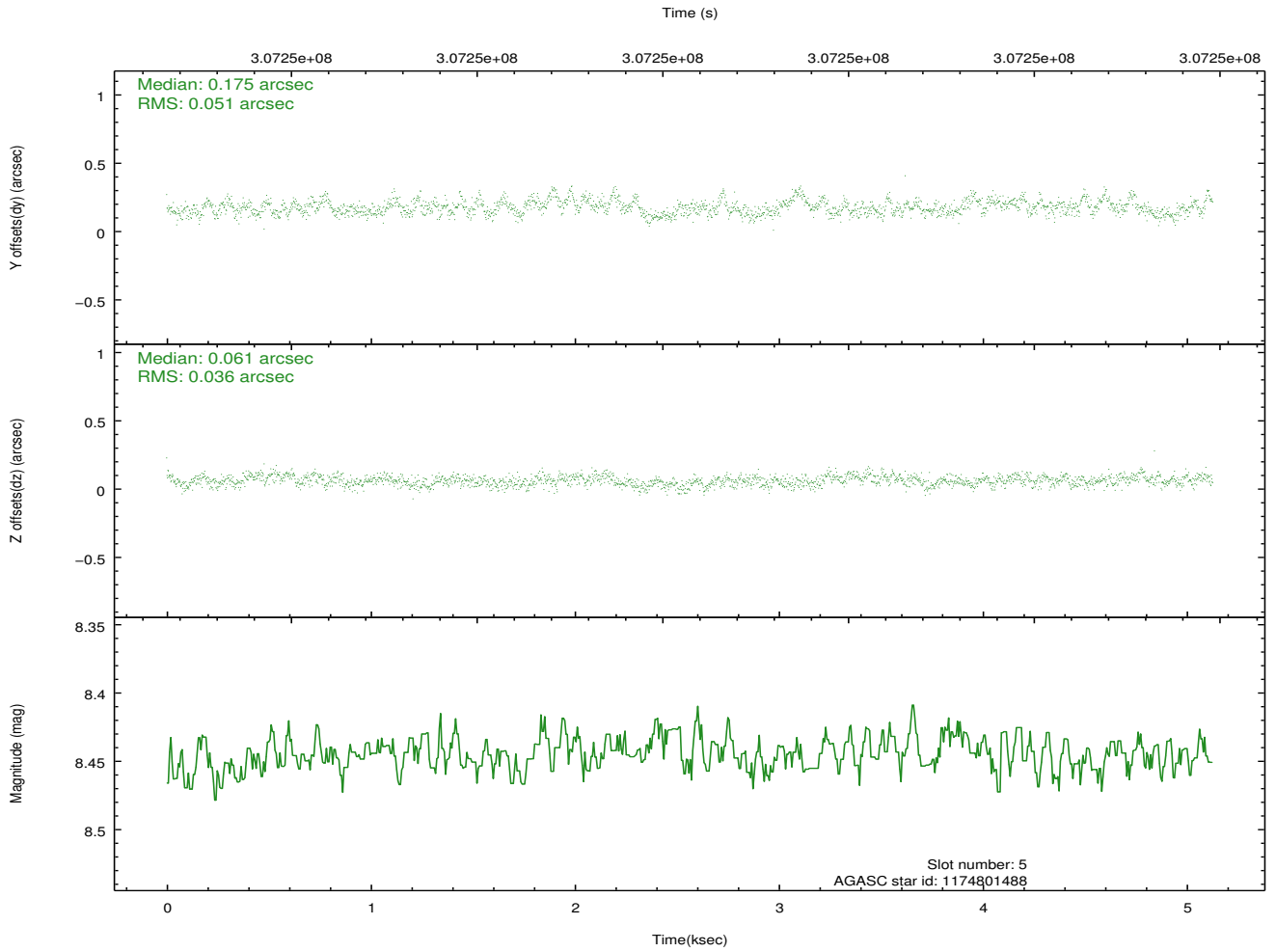
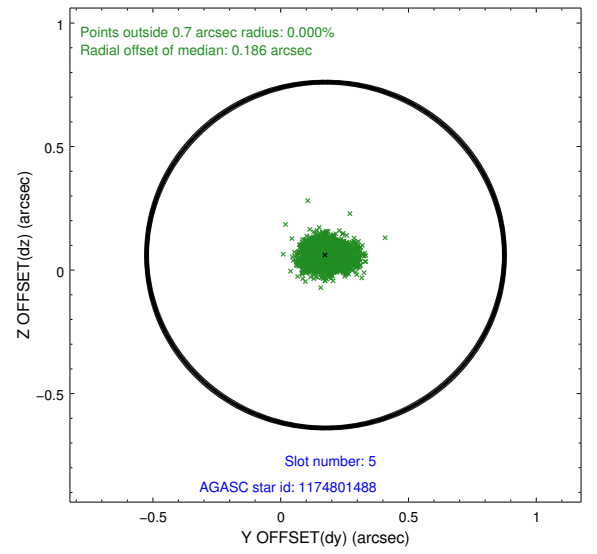
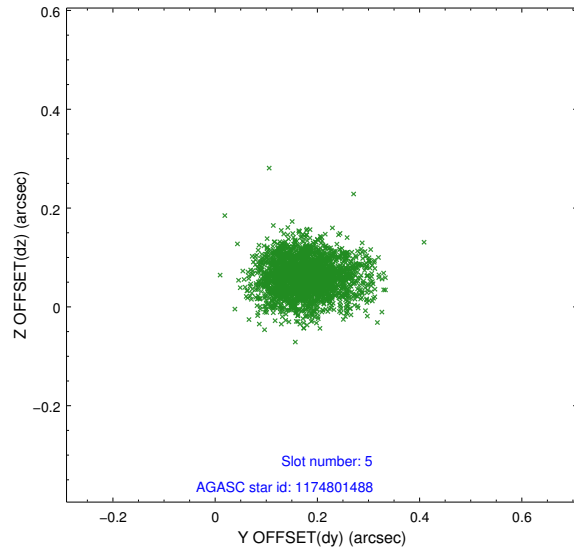
2.4.1 Slot 3



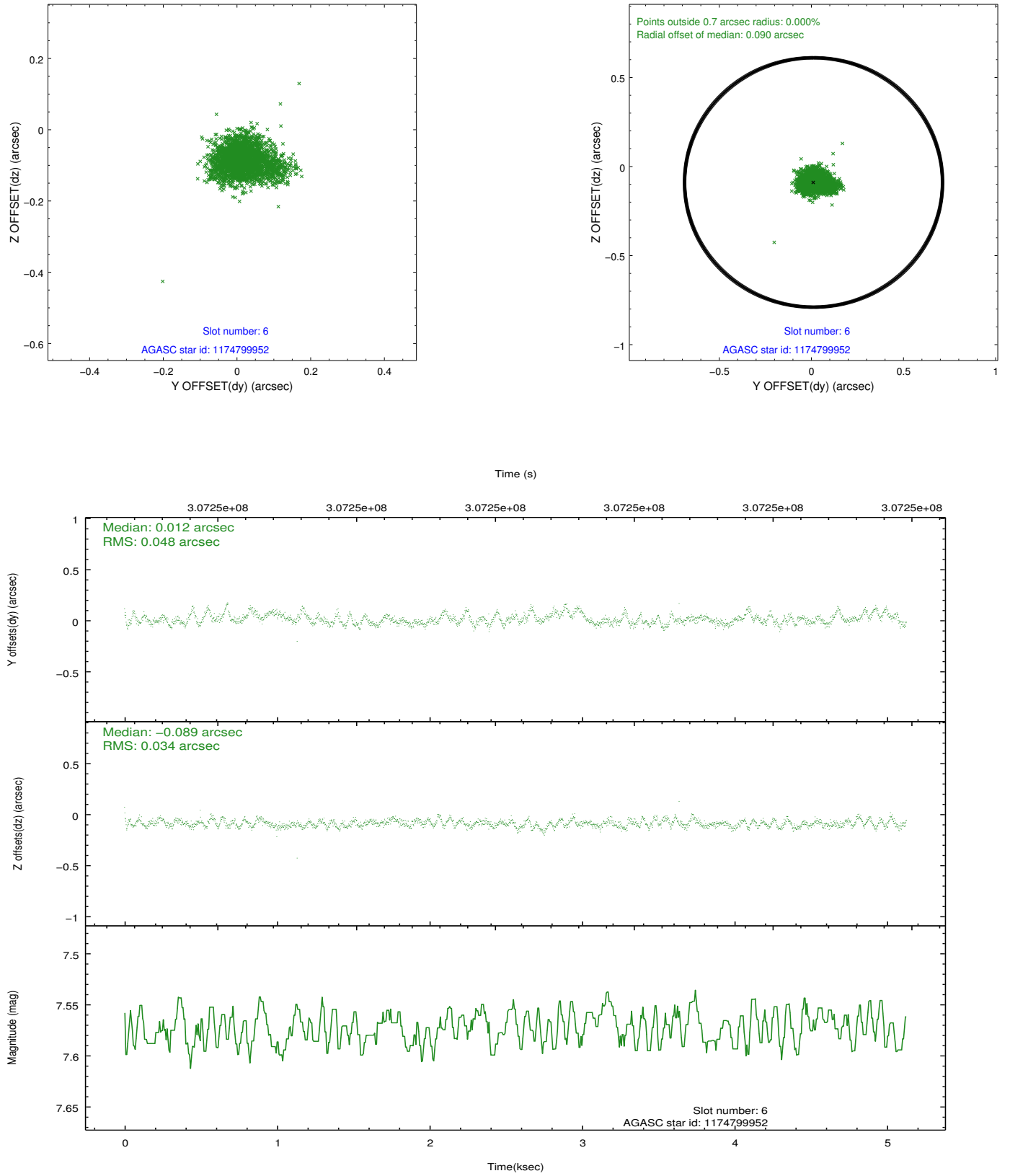
2.4.2 Slot 4



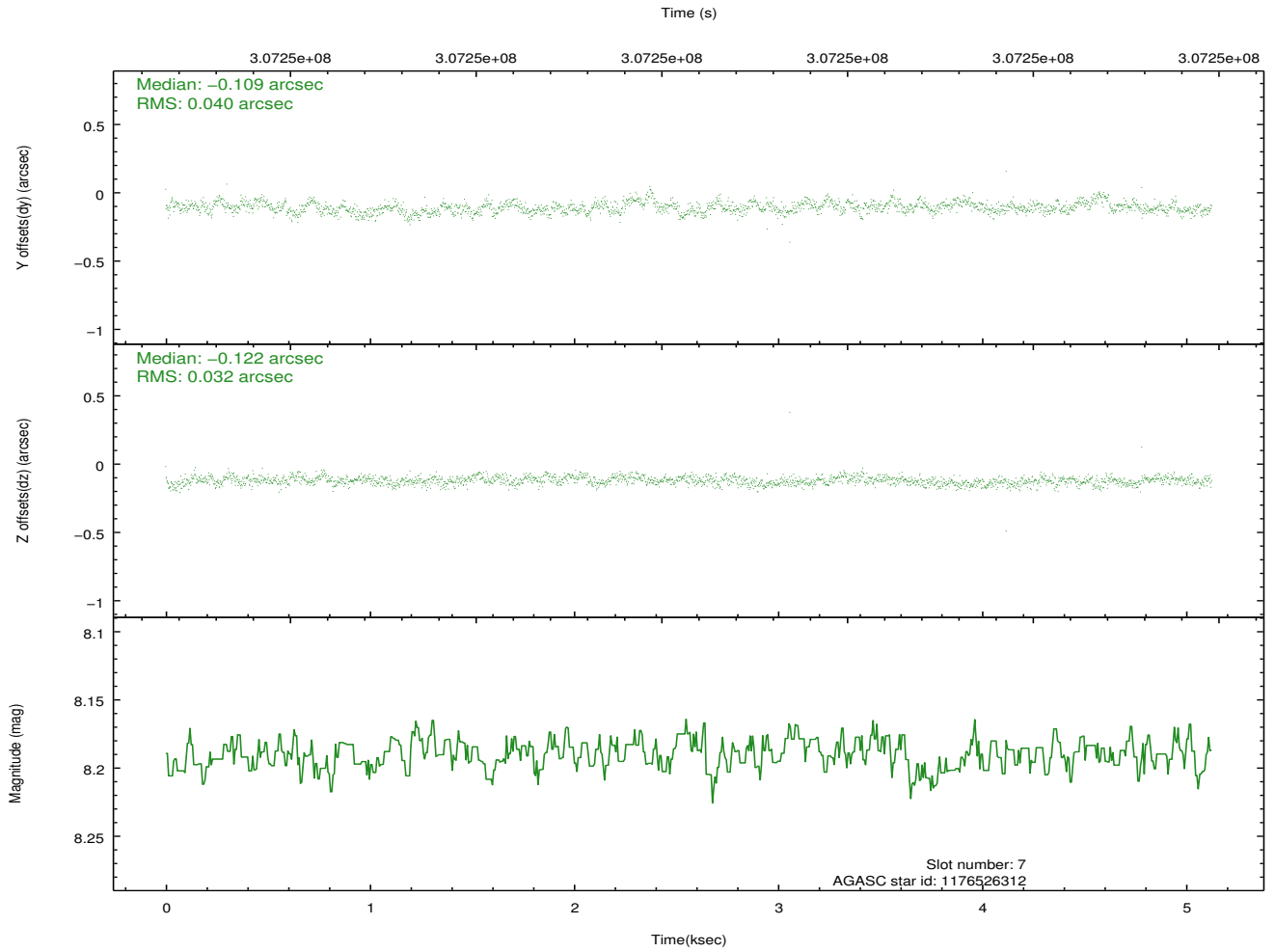
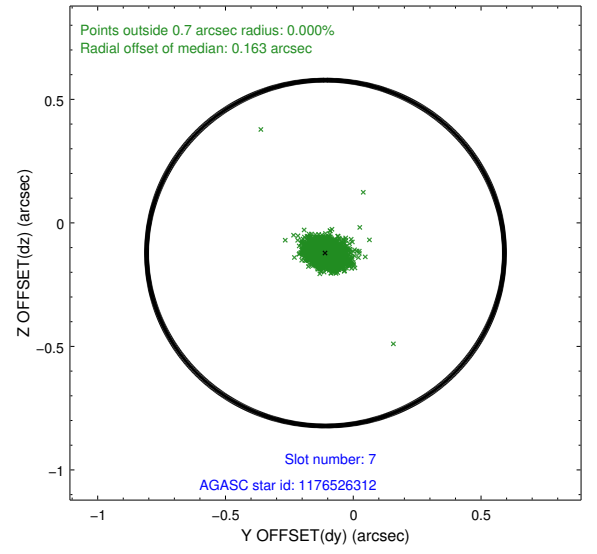
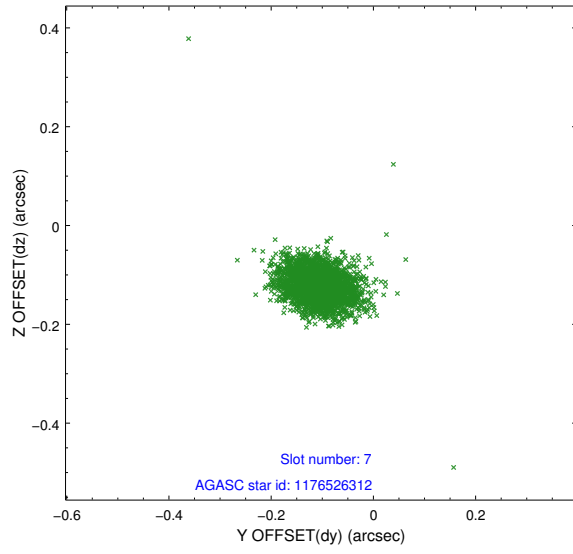
2.4.3 Slot 5



2.4.4 Slot 6

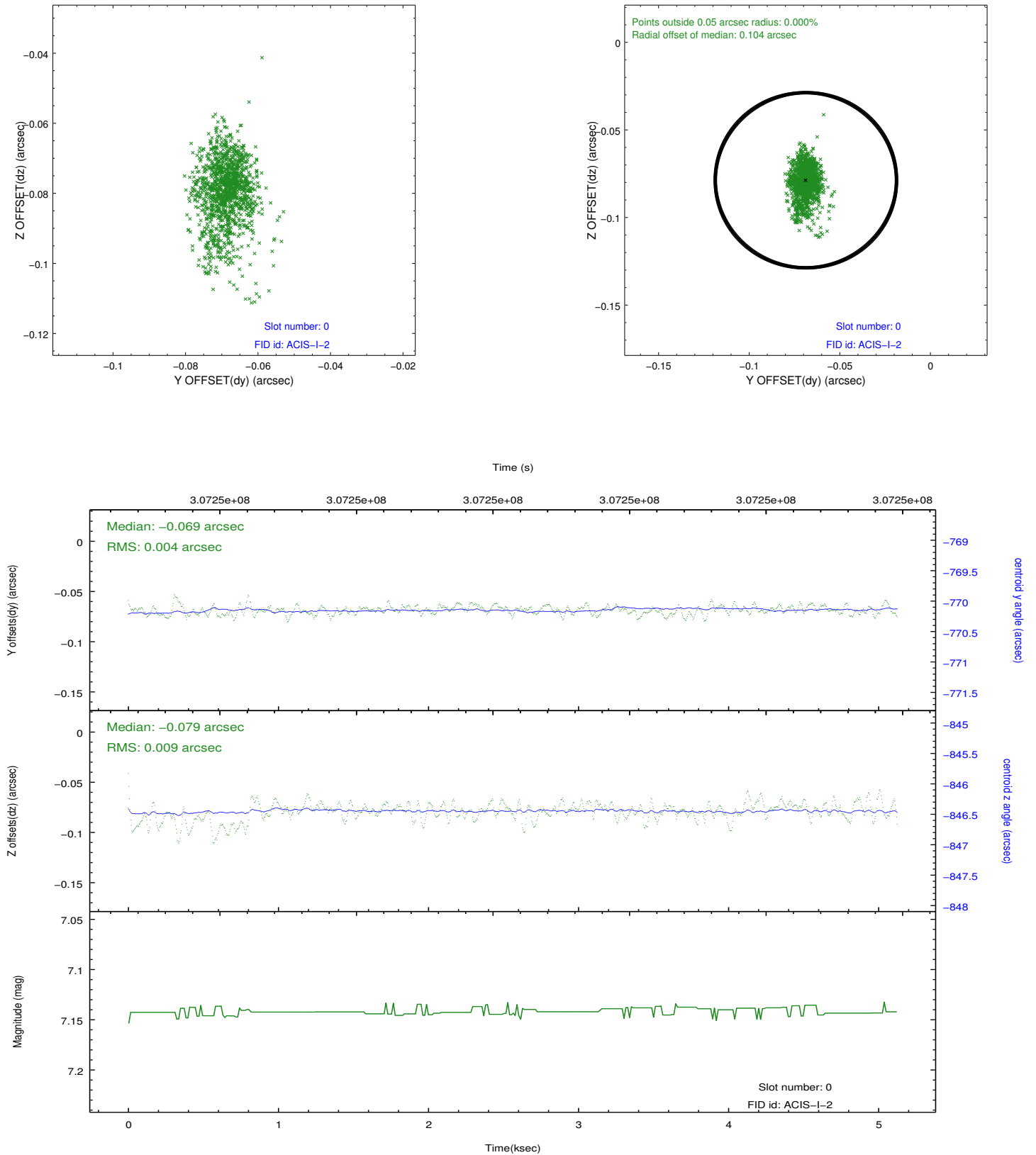


2.4.5 Slot 7

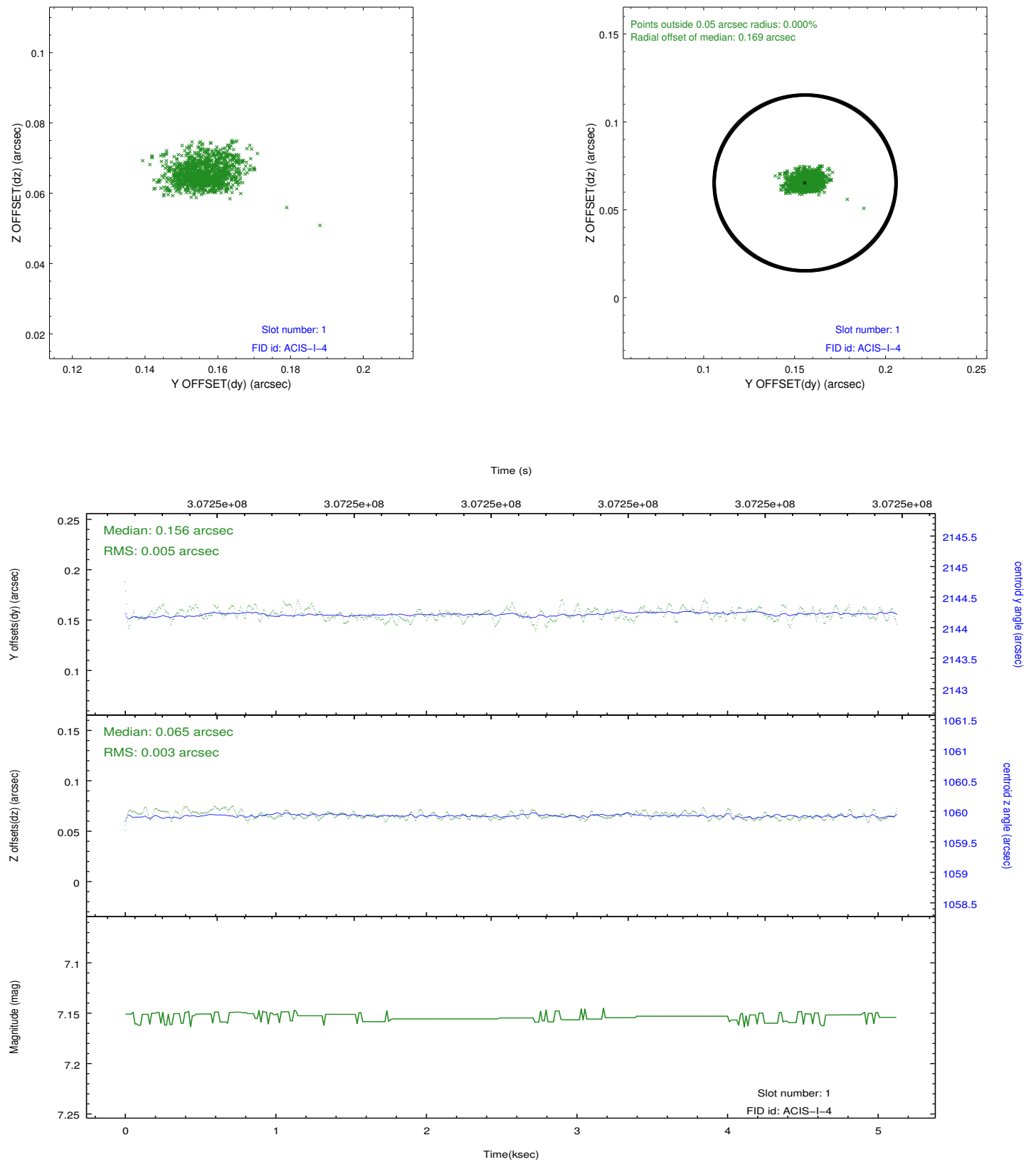


2.5 FID Slots

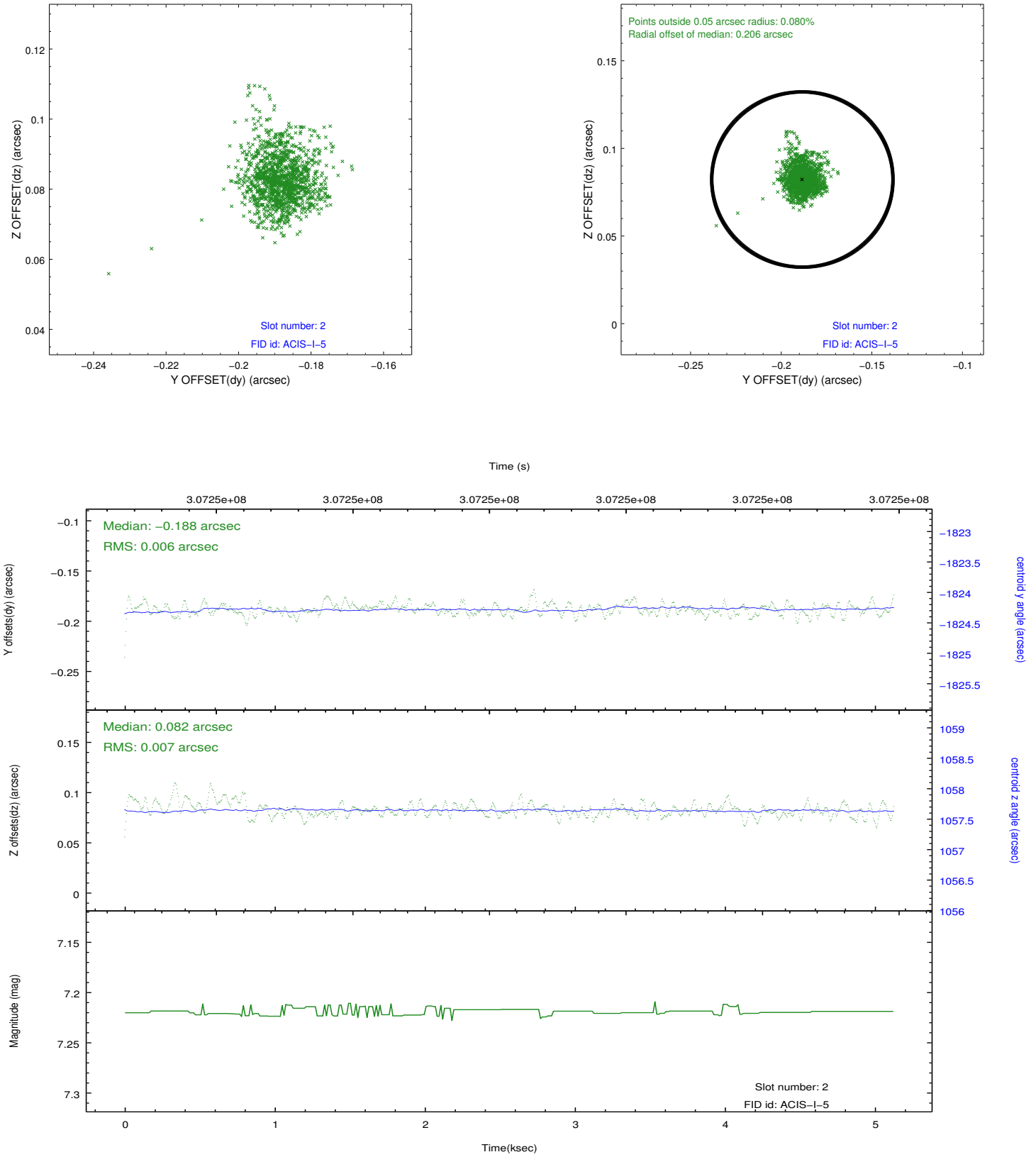
2.5.1 Slot 0



2.5.2 Slot 1



2.5.3 Slot 2



A Summary

A.1 Status

V&V Scientist	Beth Sundheim
V&V Date (YYYY-MM-DD)	2012.05.03
V&V Edition	1
V&V Disposition and Status	OK
V&V Charge Time	5.12319998

A.2 Comments