

V&V Reference Report

L2 ASCDS Version : 8.4.4

Observation 7518 - L2 Version 2
Chandra X-Ray Center

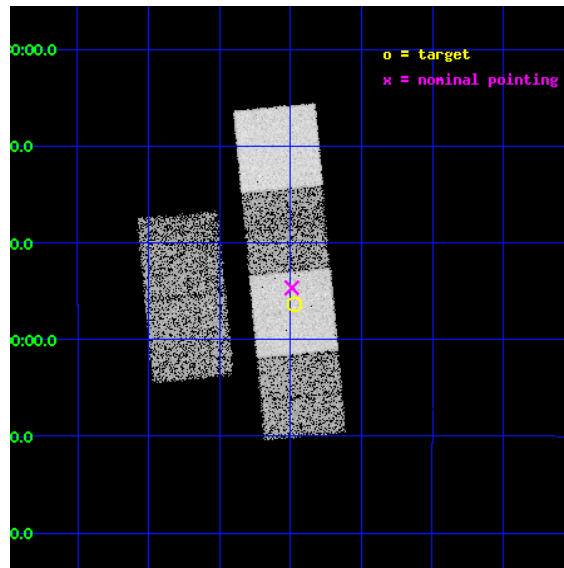
L2 Processing Date : May 10 2012

Contents

1	Front	2
2	OBI	3
2.1	OBI	3
2.1.1	Images	3
2.1.2	Bias	3
2.1.3	Parameters	4
2.1.4	Events	4
2.2	Compared Parameters	5
2.3	Aspect	6
2.4	Star Slots	9
2.4.1	Slot 3	9
2.4.2	Slot 4	10
2.4.3	Slot 5	11
2.4.4	Slot 6	12
2.4.5	Slot 7	13
2.5	FID Slots	14
2.5.1	Slot 0	14
2.5.2	Slot 1	15
2.5.3	Slot 2	16
A	Summary	17
A.1	Status	17
A.2	Comments	17

1 Front

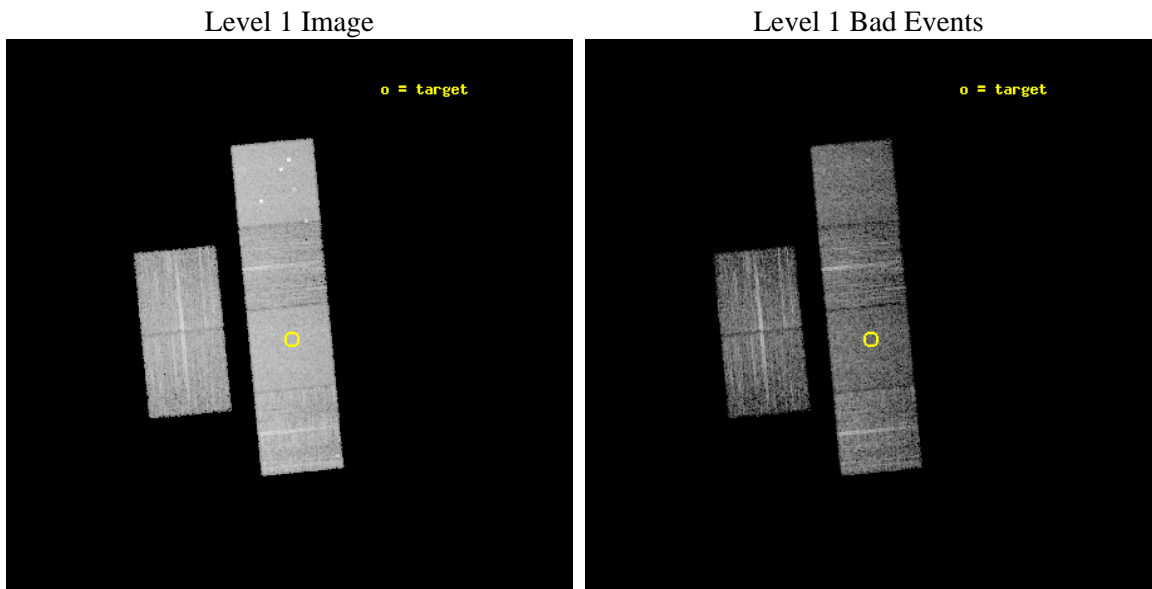
seq_num	400628	Sequence number
obs_id	7518	Observation id
title	Localization and Spectra of INTEGRAL-Selected Sources in the Galactic Plane	Proposal title
observer	Dr. John Tomsick	Principal investigator
object	IGR J18325-0756	Source name
dtcycle	0	
cycle	P	events from which exps? Prim/Second/Both
ra_targ	278.117917	Observer's specified target RA [deg]
dec_targ	-7.94	Observer's specified target Dec [deg]
ra_nom	278.12248049076	Nominal RA [deg]
dec_nom	-7.9111174110255	Nominal Dec [deg]
roll_nom	84.543714173291	Nominal Roll [deg]
revision	2	Processing version of data
ontime	5126.3999809623	Sum of GTIs [s]
livetime	5061.4864176559	Livetime [s]
ontime2	5126.3999809623	Sum of GTIs [s]
ontime3	5126.3999809623	Sum of GTIs [s]
ontime5	5126.3999809623	Sum of GTIs [s]
ontime6	5126.3999809623	Sum of GTIs [s]
ontime7	5126.3999809623	Sum of GTIs [s]
ontime8	5126.3999809623	Sum of GTIs [s]
l2events	82453	Number of level 2 events



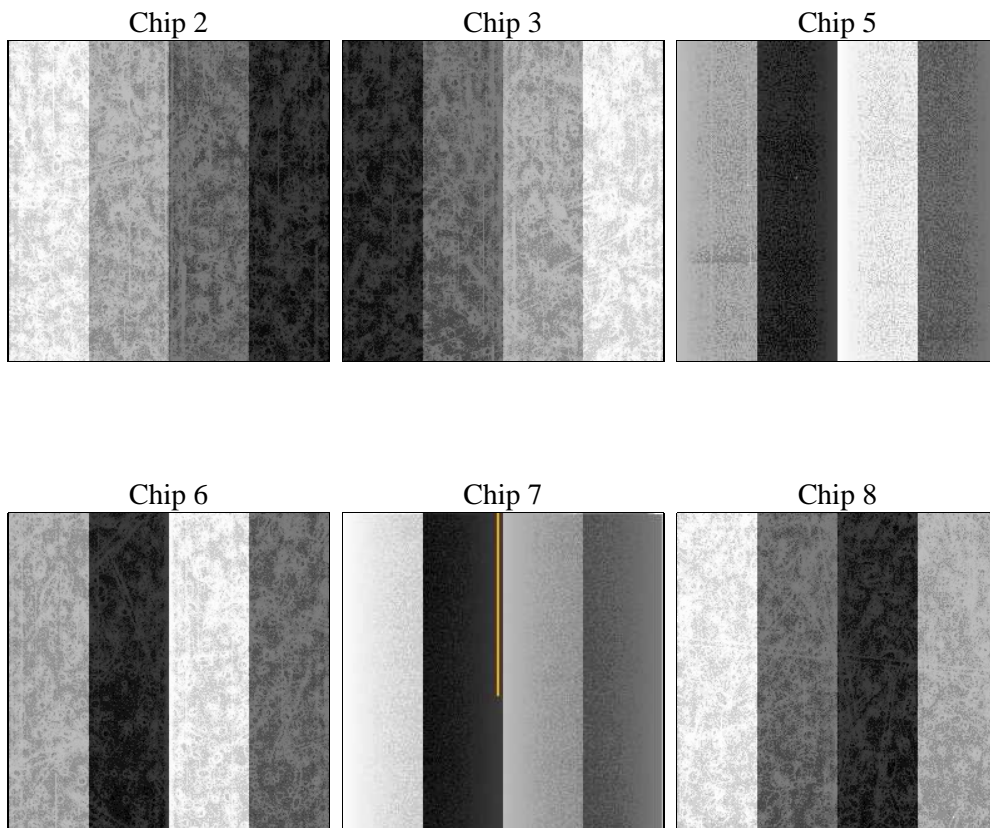
2 OBI

2.1 OBI

2.1.1 Images



2.1.2 Bias



2.1.3 Parameters

obi_num	0	Obi number	sched_exp_time	5000.000000	[s] Scheduled observation exposure time
ascdsver	8.4.4	Processing system revision	ontime	5126.3999809623	Sum of GTIs [s]
caldbver	4.4.9	 	ontime2	5126.3999809623	Sum of GTIs [s]
date	2012-05-10T09:08:10	Date and time of file creation	ontime3	5126.3999809623	Sum of GTIs [s]
revision	2	Processing version of data	ontime5	5126.3999809623	Sum of GTIs [s]
			ontime6	5126.3999809623	Sum of GTIs [s]
			ontime7	5126.3999809623	Sum of GTIs [s]
			ontime8	5126.3999809623	Sum of GTIs [s]
			l1events	376116	Number of level 1 events

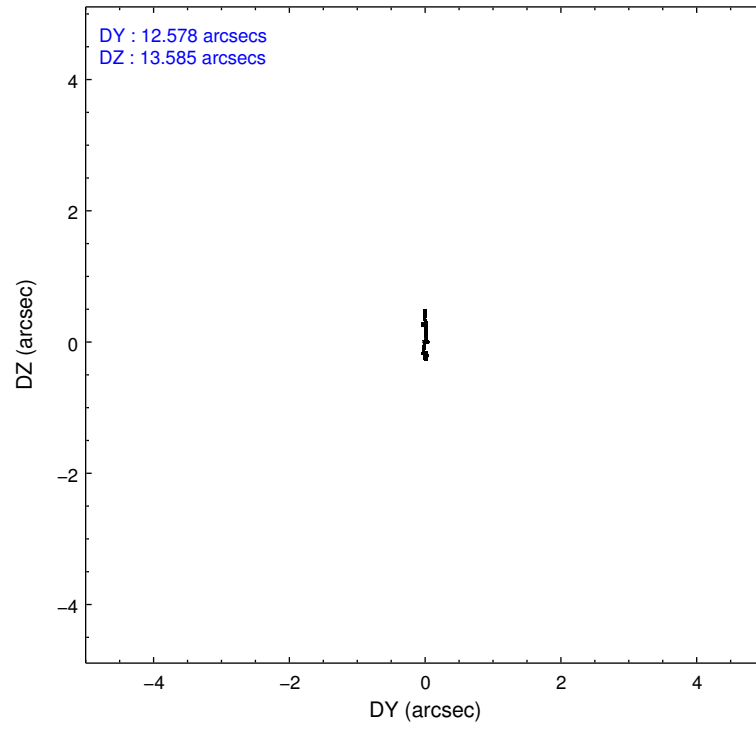
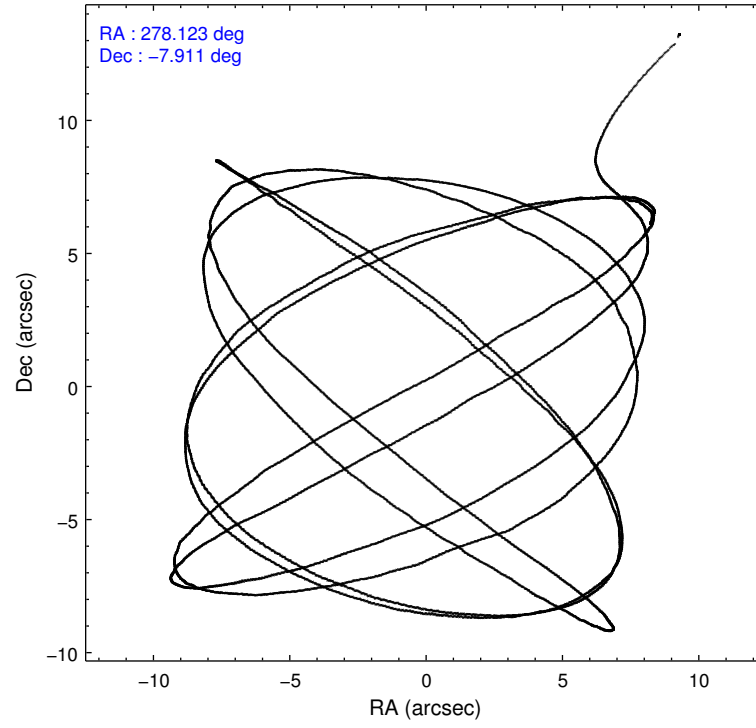
2.1.4 Events

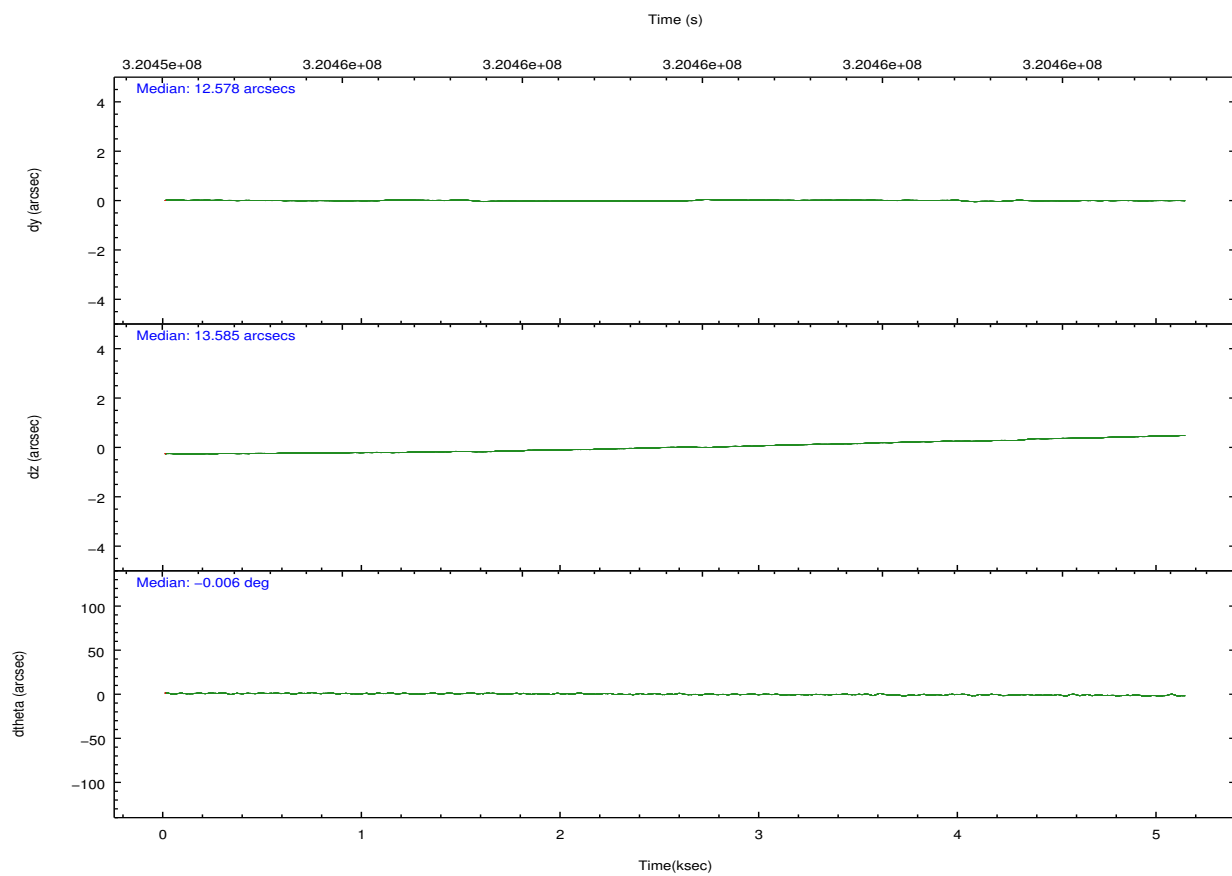
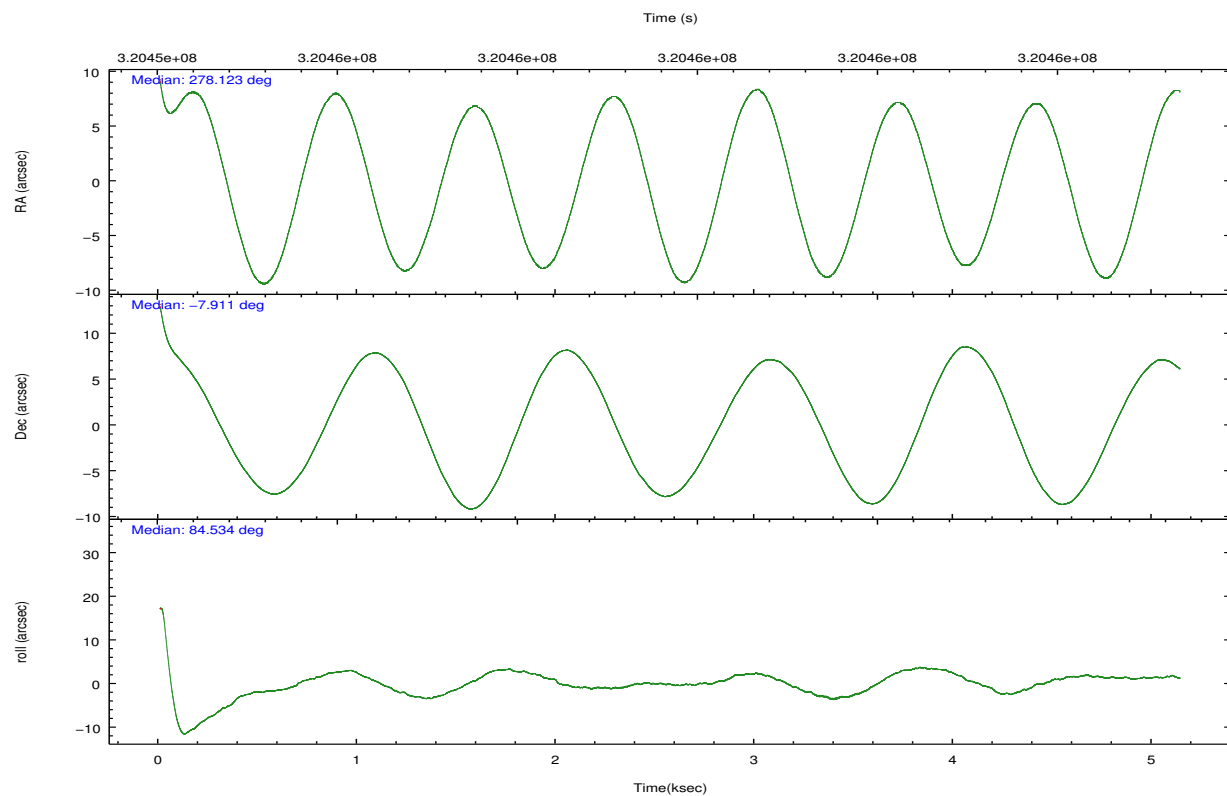
	ccd 2	ccd 3	ccd 5	ccd 6	ccd 7	ccd 8		ccd 2	ccd 3	ccd 5	ccd 6	ccd 7	ccd 8
level 1 events	53081	49893	81631	52657	71718	67136	grade 0 events	2540	2889	4747	2407	2469	4873
rejected events	47388	43825	44896	46589	43338	52751		4%	5%	5%	4%	3%	7%
rejected %	89%	87%	54%	88%	60%	78%	grade 1 events	31	31	209	33	63	49
								0%	0%	0%	0%	0%	0%
							grade 2 events	1336	1235	11373	1396	5932	3337
								2%	2%	13%	2%	8%	4%
							grade 3 events	585	555	1317	616	2446	1604
								1%	1%	1%	1%	3%	2%
							grade 4 events	534	561	1132	570	2406	1416
								1%	1%	1%	1%	3%	2%
							grade 5 events	2069	2355	5407	2411	6621	3336
								3%	4%	6%	4%	9%	4%
							grade 6 events	980	1091	19894	1361	16329	3778
								1%	2%	24%	2%	22%	5%
							grade 7 events	45006	41176	37552	43863	35452	48743
								84%	82%	46%	83%	49%	72%

2.2 Compared Parameters

Parameter	Planned	Actual	Parameter	Planned	Actual
Instrument	ACIS	ACIS	Obspar format version number	7	7
Detector	ACIS-235678	ACIS-235678	Obspar file type	PREDICTED	ACTUAL
Grating	NONE	NONE	Obspar update status	NONE	UPDATED
Data mode	FAINT	FAINT	CCD I0 on	N	N
Observation mode	POINTING	POINTING	CCD I1 on	N	N
[deg] Pointing RA	278.134222	278.1224804907606	CCD I2 on	O2	Y
[deg] Pointing Dec	-7.935892	-7.911117411025501	CCD I3 on	Y	Y
[deg] Pointing Roll	84.388638	84.54371417329072	CCD S0 on	N	N
[mm] SIM focus pos	-0.684267	-0.6828225247311905	CCD S1 on	O1	Y
[mm] SIM defocus	0	0.001444936568705701	CCD S2 on	Y	Y
[mm] SIM translation stage pos	-190.132523	-190.1425803651734	CCD S3 on	Y	Y
[mm] SIM translation stage offset	0	0.01005778216563158	CCD S4 on	Y	Y
[s] Observation start time (MET)	320454419.184000	320453255.9665	CCD S5 on	N	N
Observation start date	2008-02-26T23:05:54	2008-02-26T22:47:35	Number of optional ACIS chips dropped	0	0
[s] Observation end time (MET)	320459419.184000	320460035.31683	On-chip summing requested	N	N
Observation end date	2008-02-27T00:29:14	2008-02-27T00:40:35	Subarray requested	NONE	NONE
Read mode	TIMED	TIMED	Alternating exposures requested	N	N
			[s] Primary exposure time	0.000000	3.2

2.3 Aspect



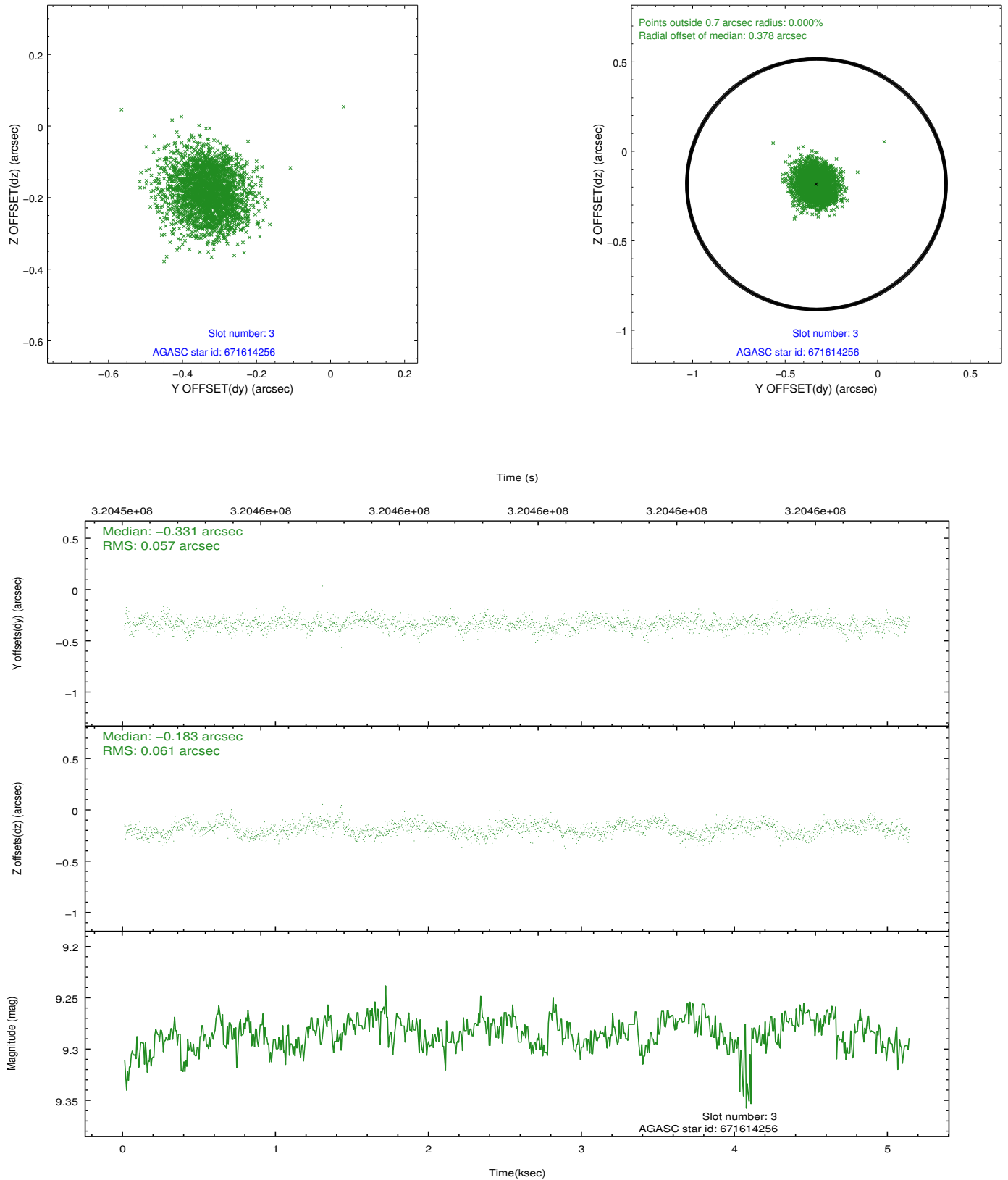


Slot Statistics

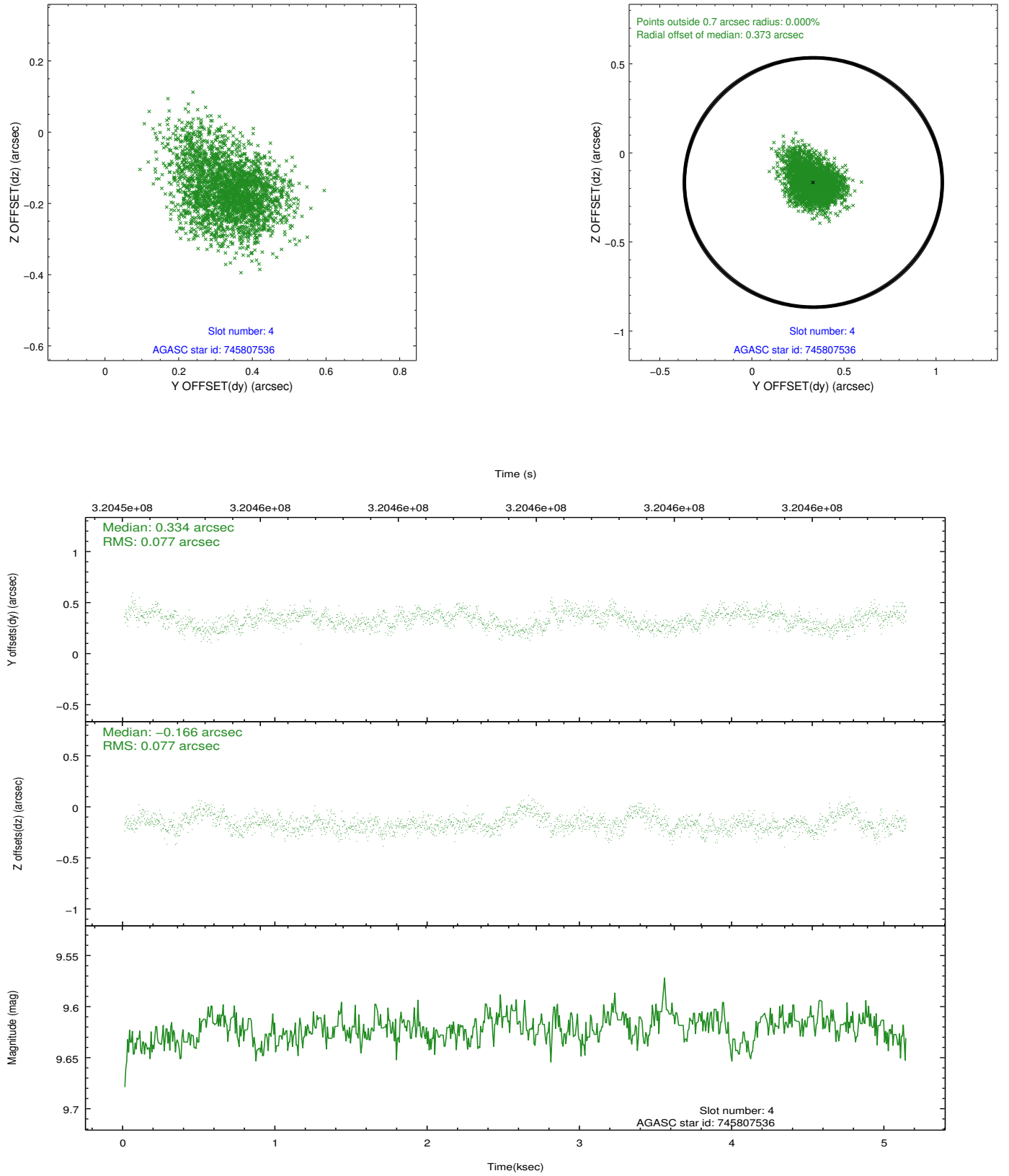
slot	status	id	mag	n_pts	med_dy	med_dz	dr1	dr2	ra	dec	mean_y	mean_z
0	FID	ACIS-S-1	7.20	1253	0.098	-0.047	0.011	0.016	0.000000	0.000000	930.66	-1730.58
1	FID	ACIS-S-5	7.24	1253	-0.136	0.074	0.008	0.013	0.000000	0.000000	-1817.92	165.87
2	FID	ACIS-S-6	7.33	1253	0.017	-0.014	0.008	0.013	0.000000	0.000000	394.85	811.08
3	GUIDE	671614256	9.29	2500	-0.331	-0.183	0.090	0.143	277.625307	-7.278356	2176.42	2040.40
4	GUIDE	745807536	9.62	2501	0.334	-0.166	0.117	0.188	277.493321	-8.138311	-949.50	2202.30
5	GUIDE	745934216	7.74	2504	-0.065	0.236	0.072	0.117	278.551731	-7.712324	945.69	-1402.27
6	GUIDE	745935240	9.26	2505	-0.266	-0.156	0.086	0.138	277.801448	-7.606910	1062.01	1297.13
7	GUIDE	745936608	9.24	2498	0.329	0.262	0.084	0.138	278.164164	-7.996010	-204.17	-126.49

2.4 Star Slots

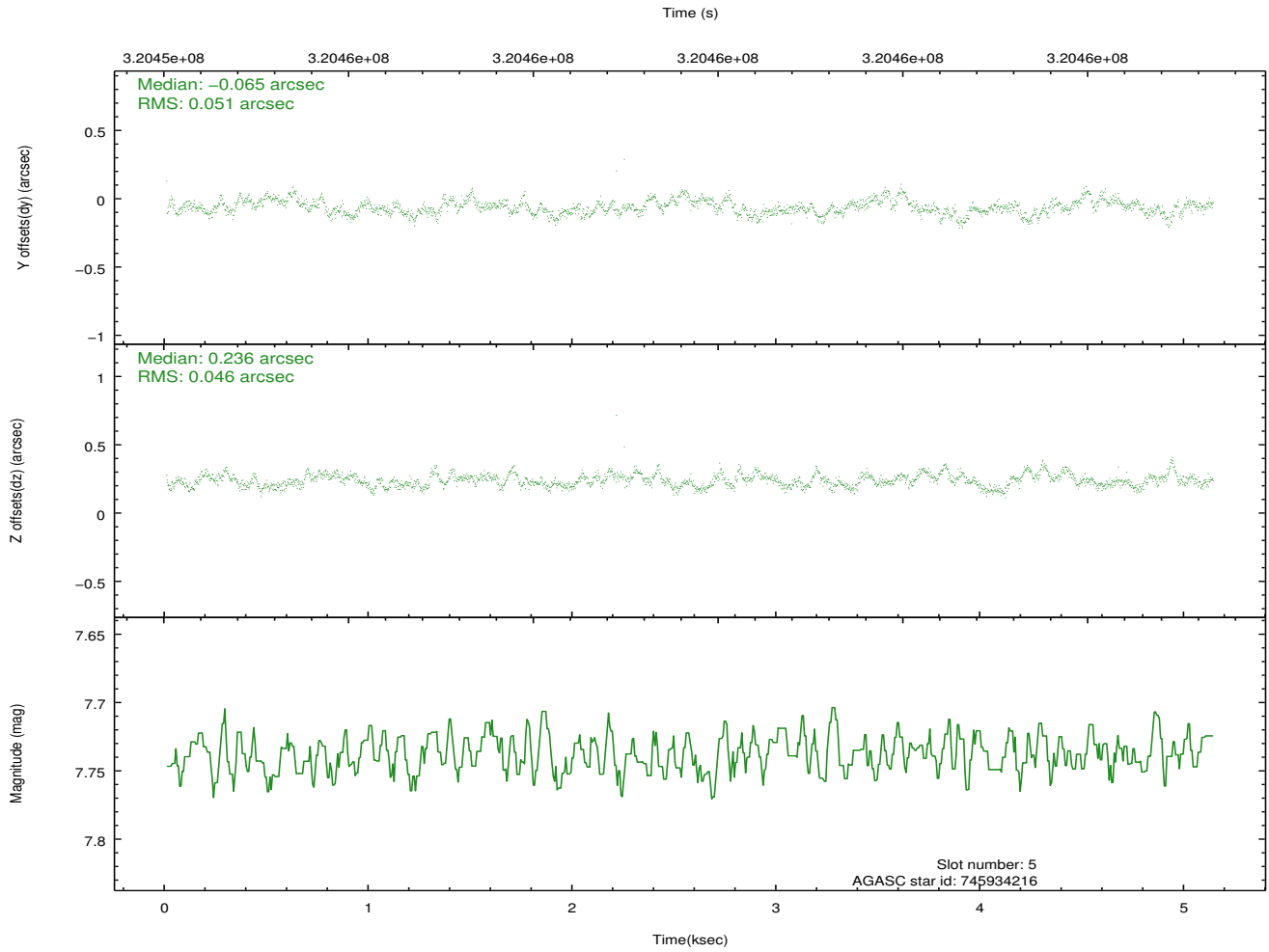
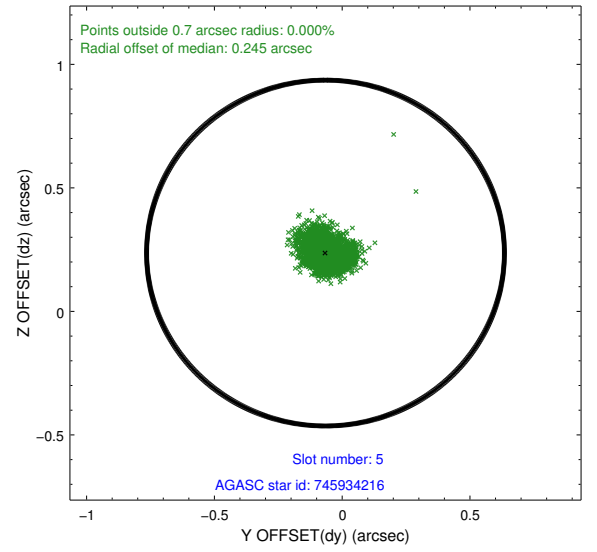
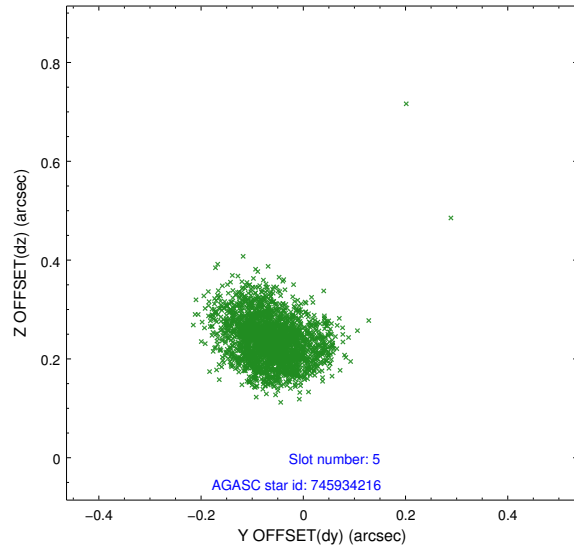
2.4.1 Slot 3



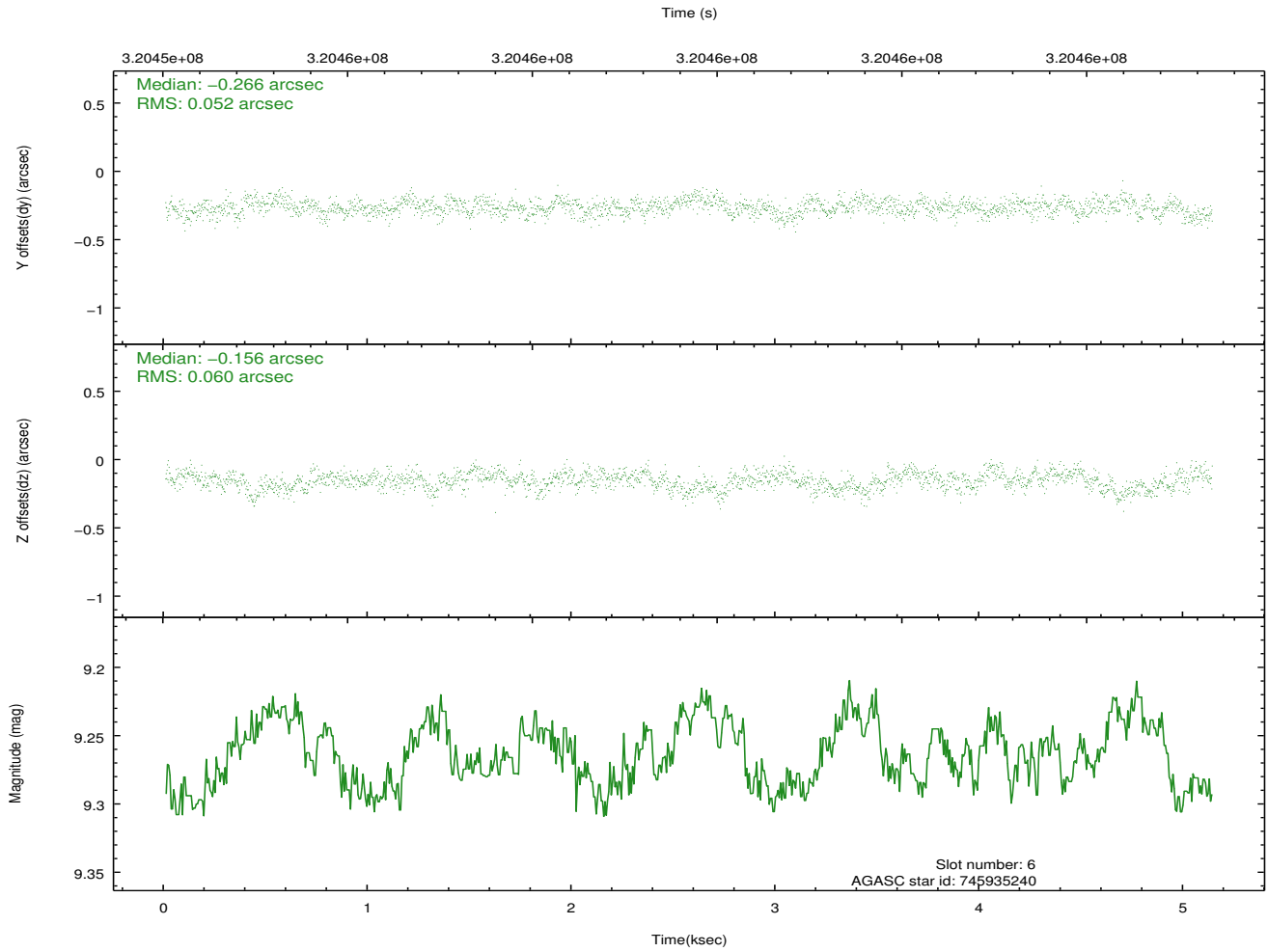
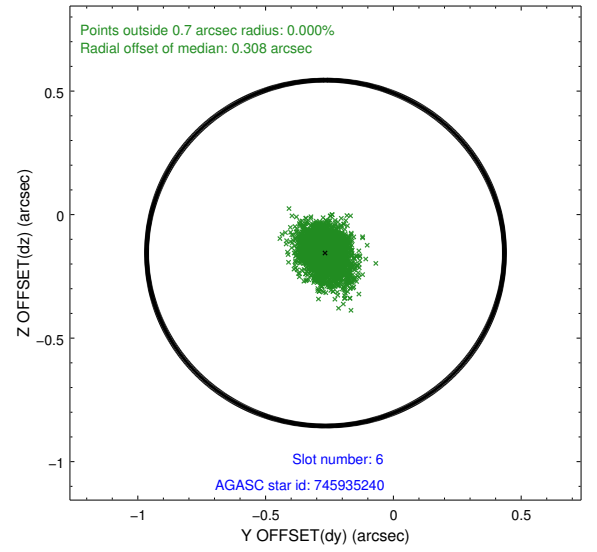
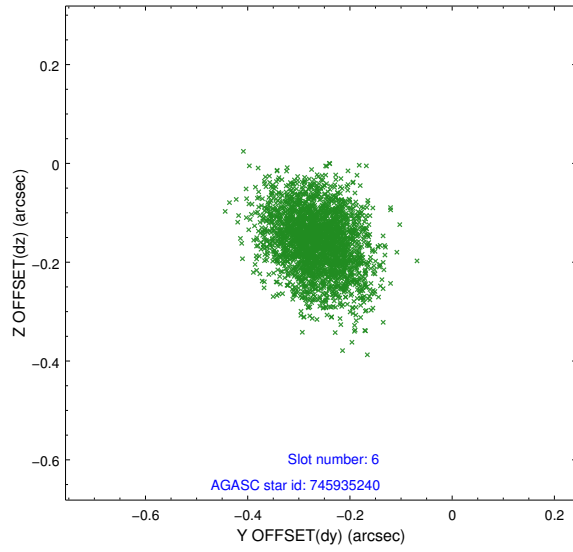
2.4.2 Slot 4



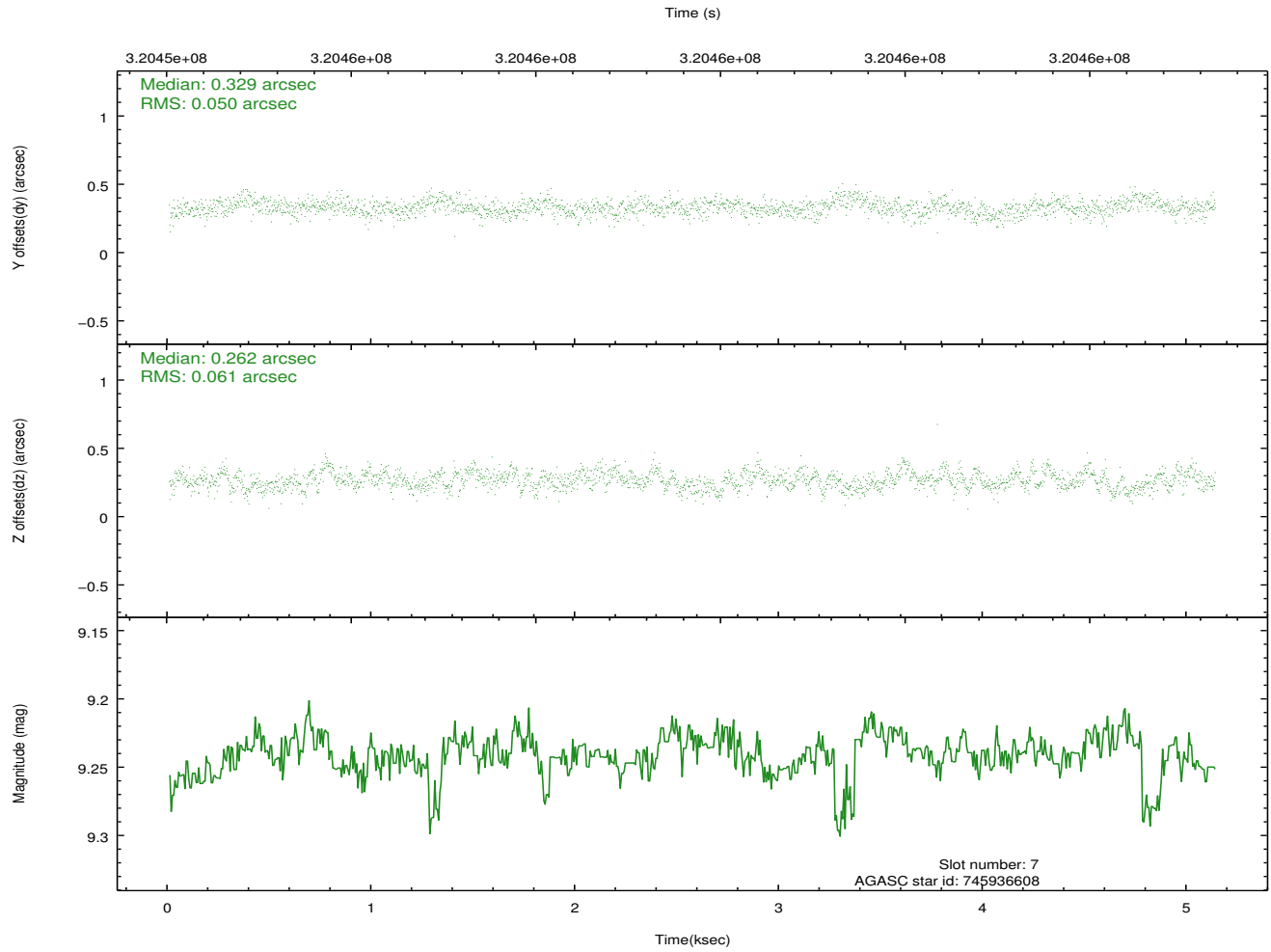
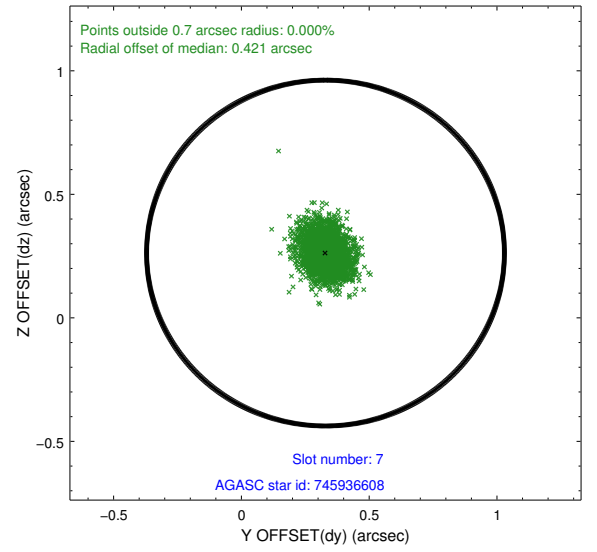
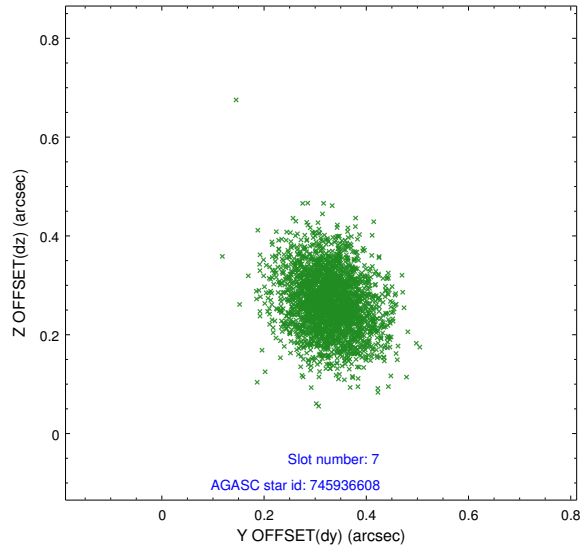
2.4.3 Slot 5



2.4.4 Slot 6

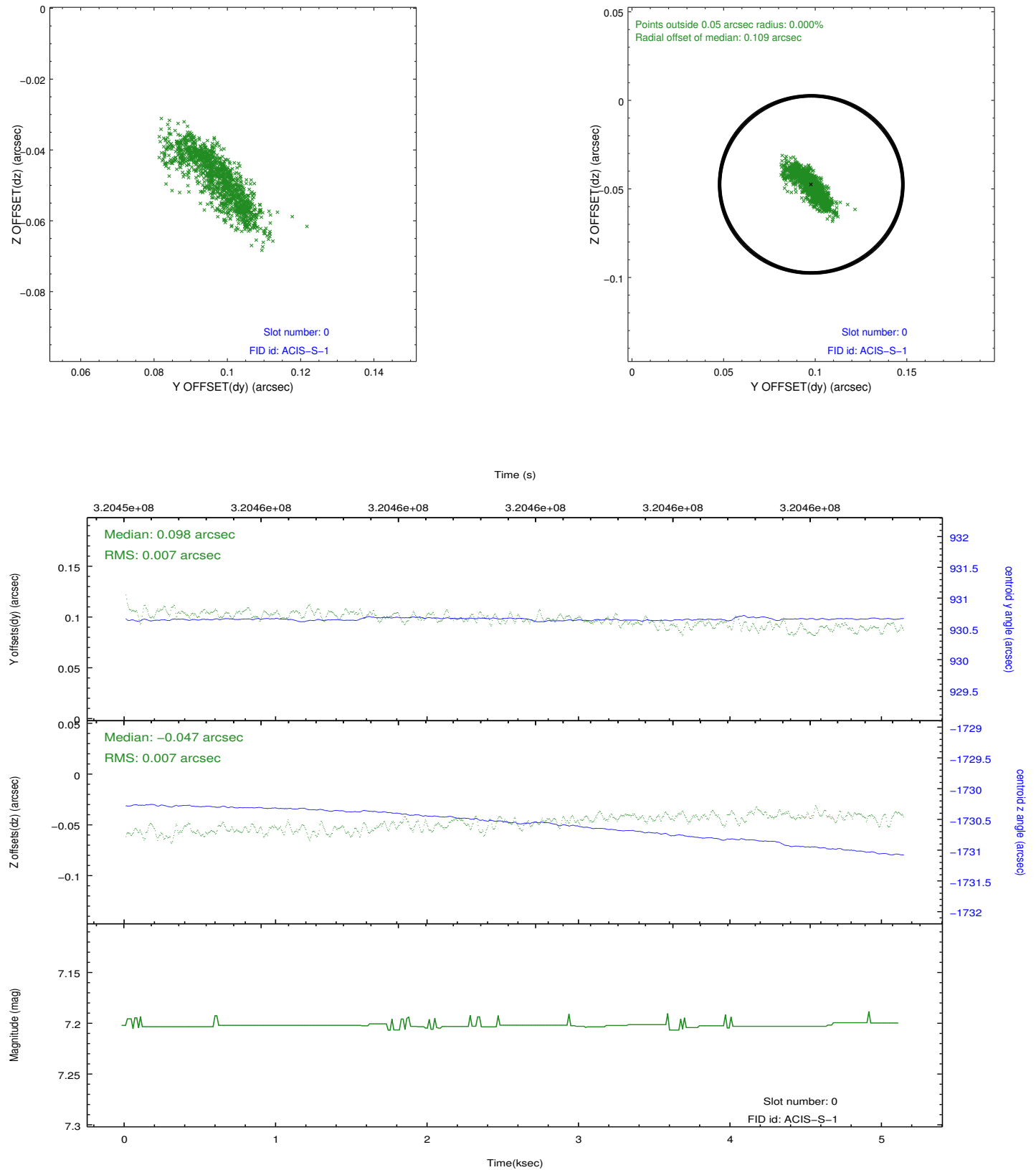


2.4.5 Slot 7

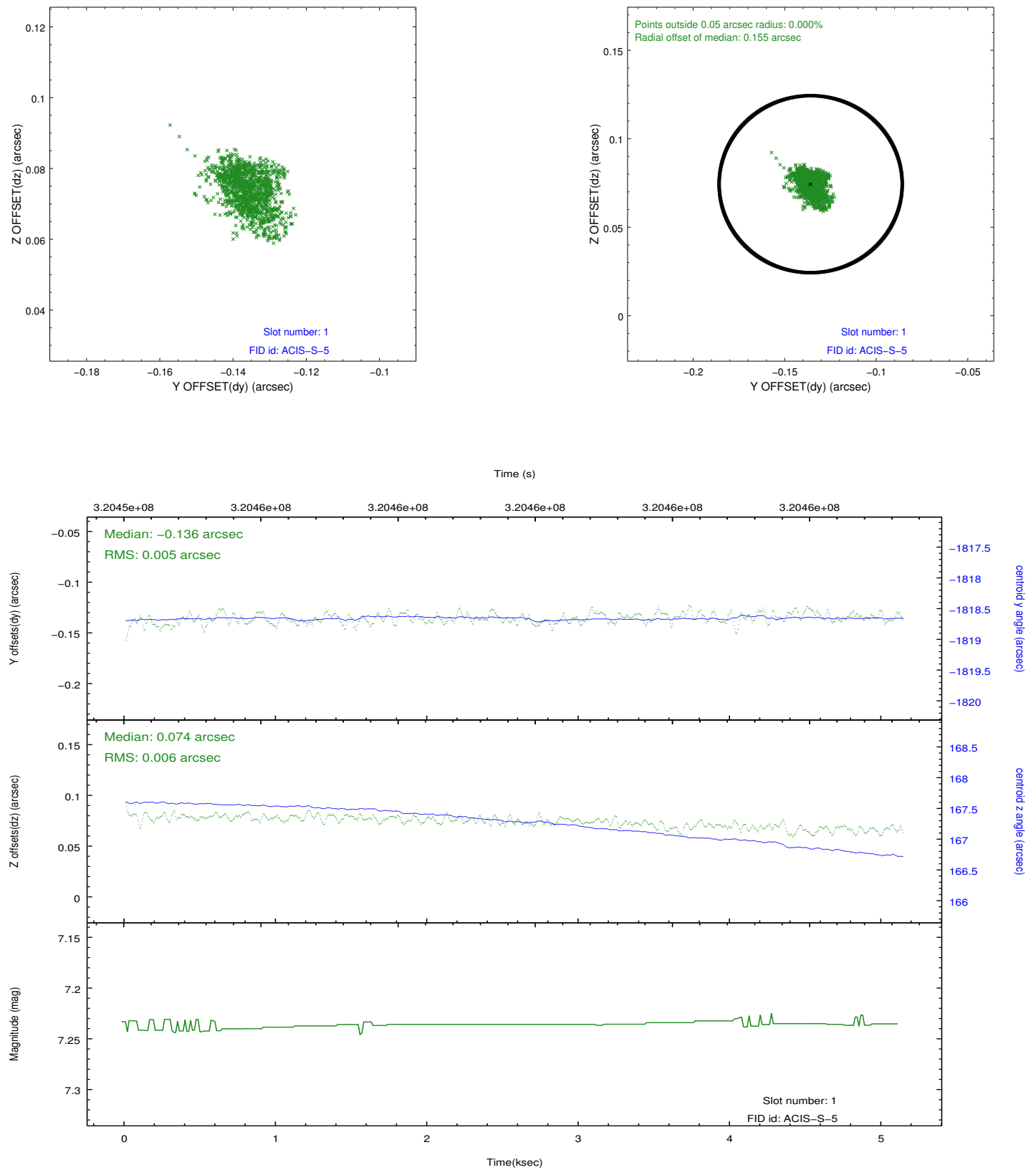


2.5 FID Slots

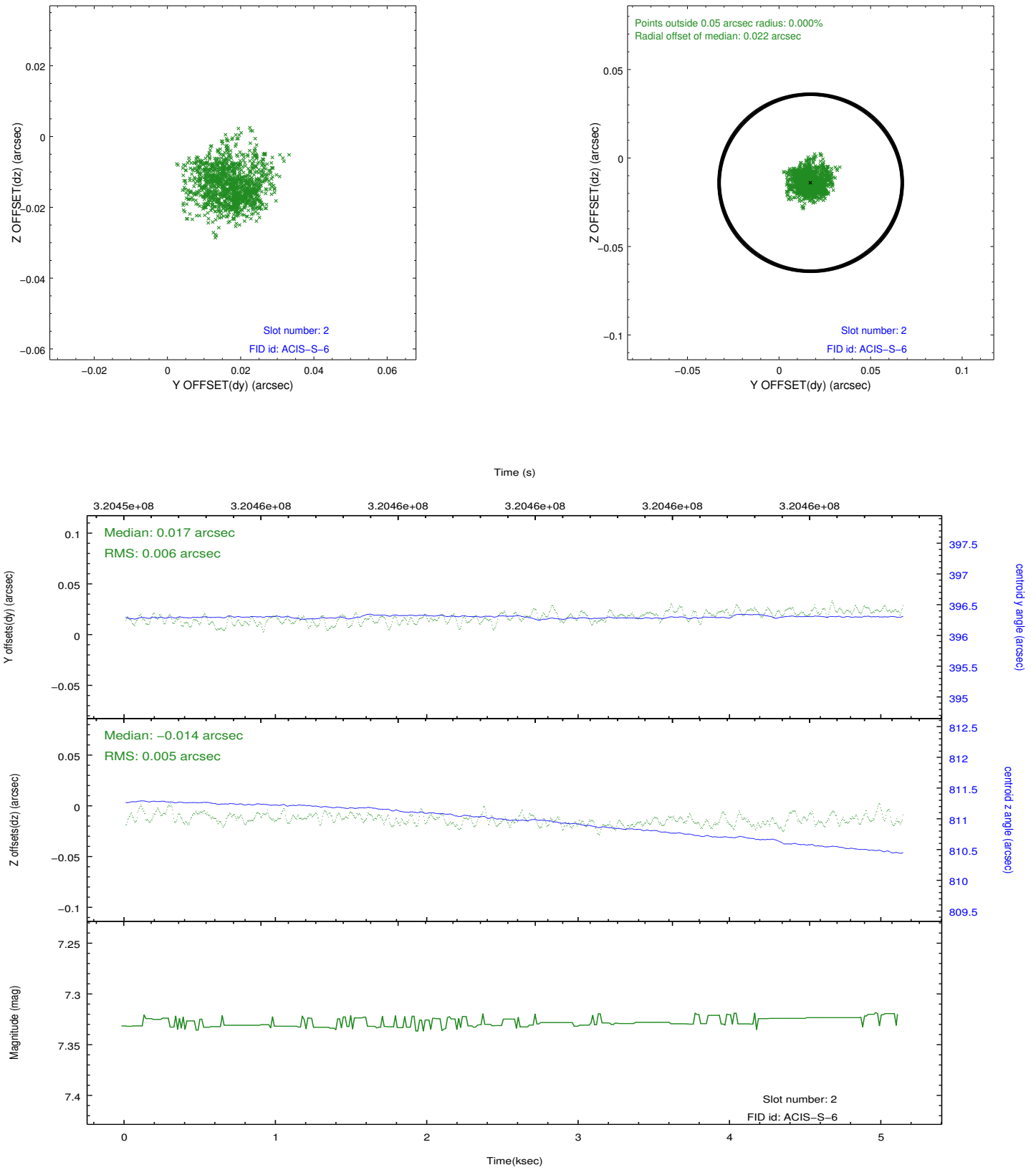
2.5.1 Slot 0



2.5.2 Slot 1



2.5.3 Slot 2



A Summary

A.1 Status

V&V Scientist	Jen Lauer
V&V Date (YYYY-MM-DD)	2012.05.13
V&V Edition	1
V&V Disposition and Status	OK
V&V Charge Time	5.12639998

A.2 Comments

A y-offset of -1.5 arcminutes was used to configure this observation to move the aimpoint closer to the center of the ACIS-S3 chip, placing the entire INTEGRAL error circle on the S3 chip.