

# V&V Reference Report

## L2 ASCDS Version : 8.4.4

Observation 7392 - L2 Version 5  
Chandra X-Ray Center

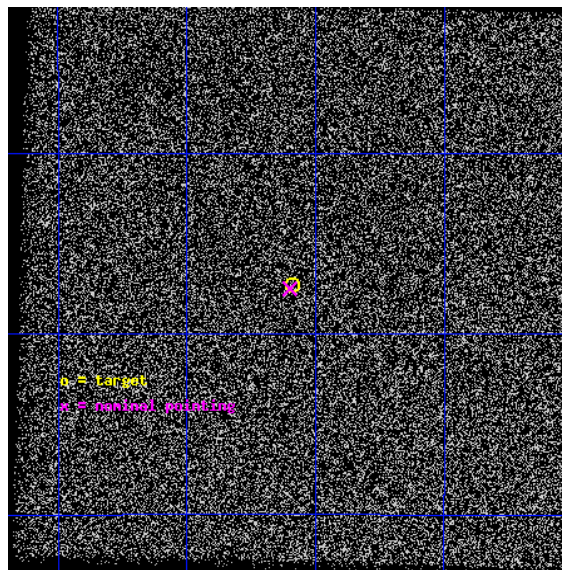
L2 Processing Date : Aug 11 2012

## Contents

<b>1</b>	<b>Front</b>	<b>2</b>
<b>2</b>	<b>OBI</b>	<b>3</b>
2.1	OBI . . . . .	3
2.1.1	Images . . . . .	3
2.1.2	Parameters . . . . .	4
2.1.3	Events . . . . .	4
2.2	Compared Parameters . . . . .	5
2.3	Aspect . . . . .	6
2.4	Star Slots . . . . .	9
2.4.1	Slot 3 . . . . .	9
2.4.2	Slot 4 . . . . .	10
2.4.3	Slot 5 . . . . .	11
2.4.4	Slot 6 . . . . .	12
2.4.5	Slot 7 . . . . .	13
2.5	FID Slots . . . . .	14
2.5.1	Slot 0 . . . . .	14
2.5.2	Slot 1 . . . . .	15
2.5.3	Slot 2 . . . . .	16
<b>A</b>	<b>Summary</b>	<b>17</b>
A.1	Status . . . . .	17
A.2	Comments . . . . .	17

# 1 Front

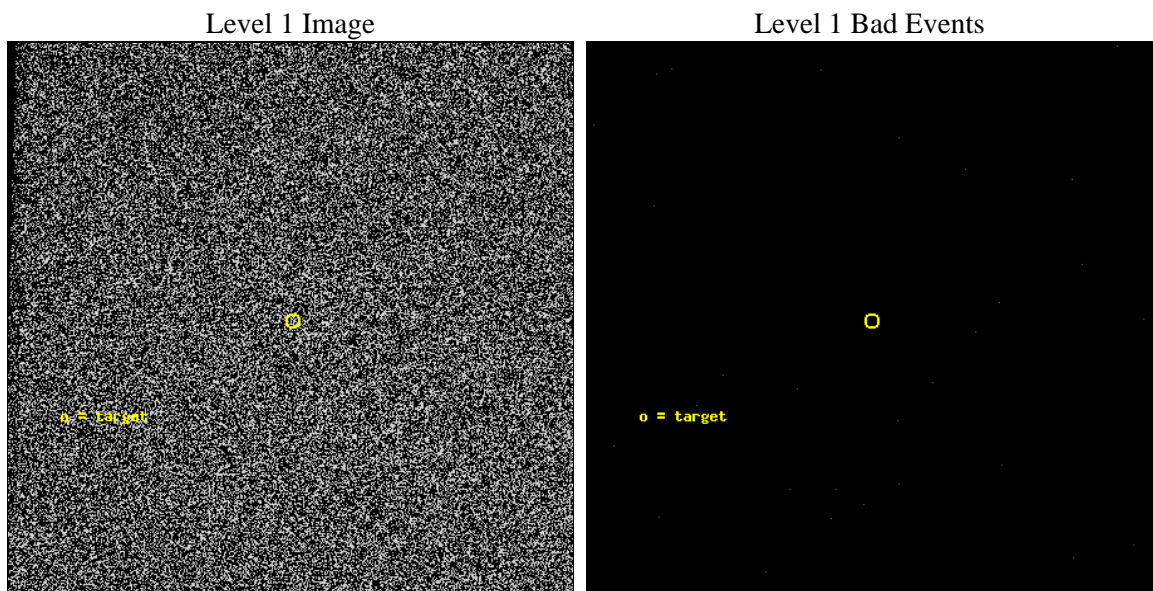
seq_num	400565	Sequence number
obs_id	7392	Observation id
title	Chandra follow-up of weak persistent sources	Proposal title
observer	Prof Mariano Mendez	Principal investigator
object	IGR J07506-1547	Source name
ra_targ	117.647083	Observer's specified target RA [deg]
dec_targ	-15.787778	Observer's specified target Dec [deg]
ra_nom	117.64994714158	Nominal RA [deg]
dec_nom	-15.791510625048	Nominal Dec [deg]
roll_nom	316.45983517103	Nominal Roll [deg]
revision	5	Processing version of data
ontime	1243.1969290376	[s]
livetime	1231.6081175498	Ontime multiplied by DTCOR
l2events	64627	Number of level 2 events



## 2 OBI

### 2.1 OBI

#### 2.1.1 Images



### 2.1.2 Parameters

obi_num	2	Obi number	sched_exp_time	1081.000000	[s] Scheduled observation exposure time
ascdsver	8.4.5	Processing system revision	ontime	1243.3250590563	[s]
caldsver	4.5.1.1	&#160	l1events	173123	Number of level 1 events
date	2012-08-11T19:10:34	Date and time of file creation			
revision	5	Processing version of data			

### 2.1.3 Events

#### Level 1 Events

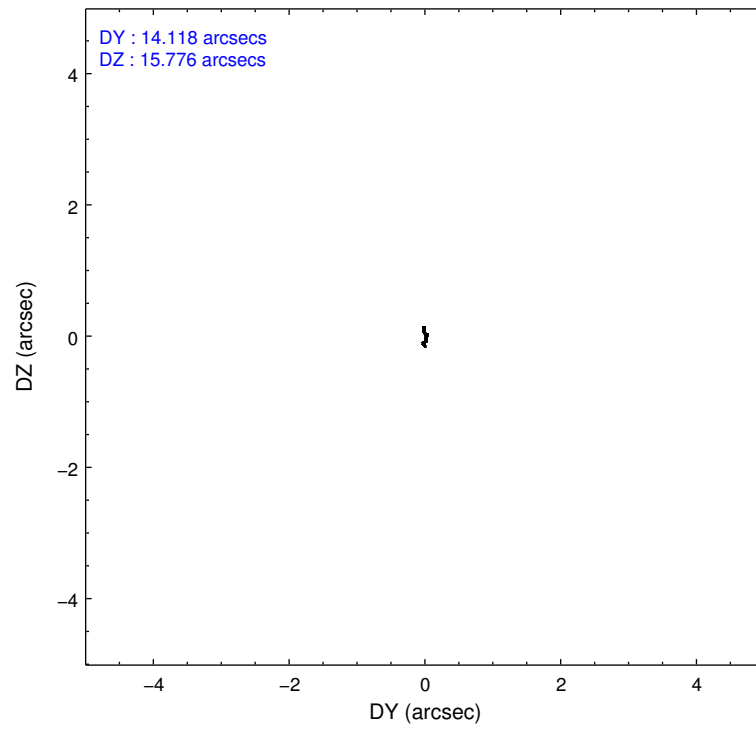
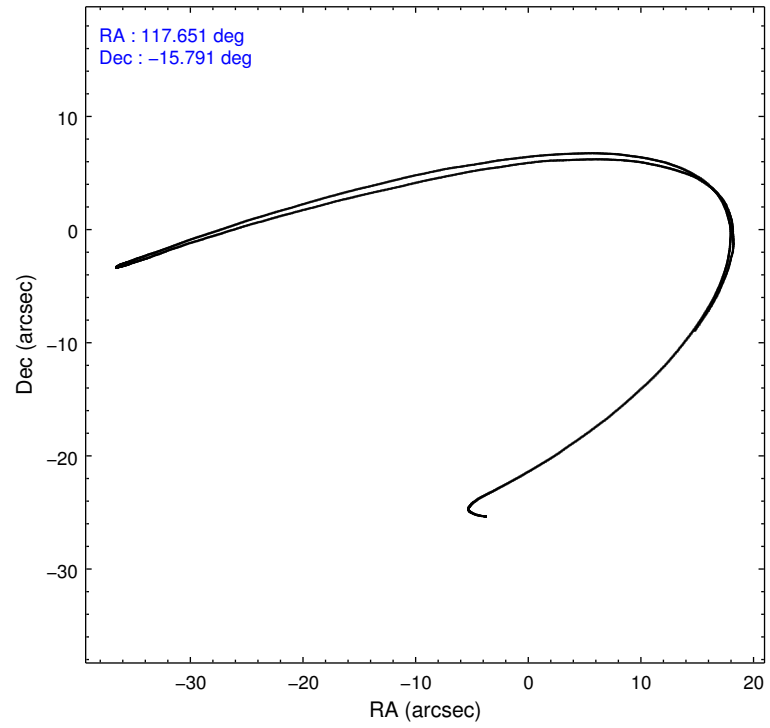
	<b>segment 0</b>
level 1 events	173123
rejected events	76916
rejected %	44%

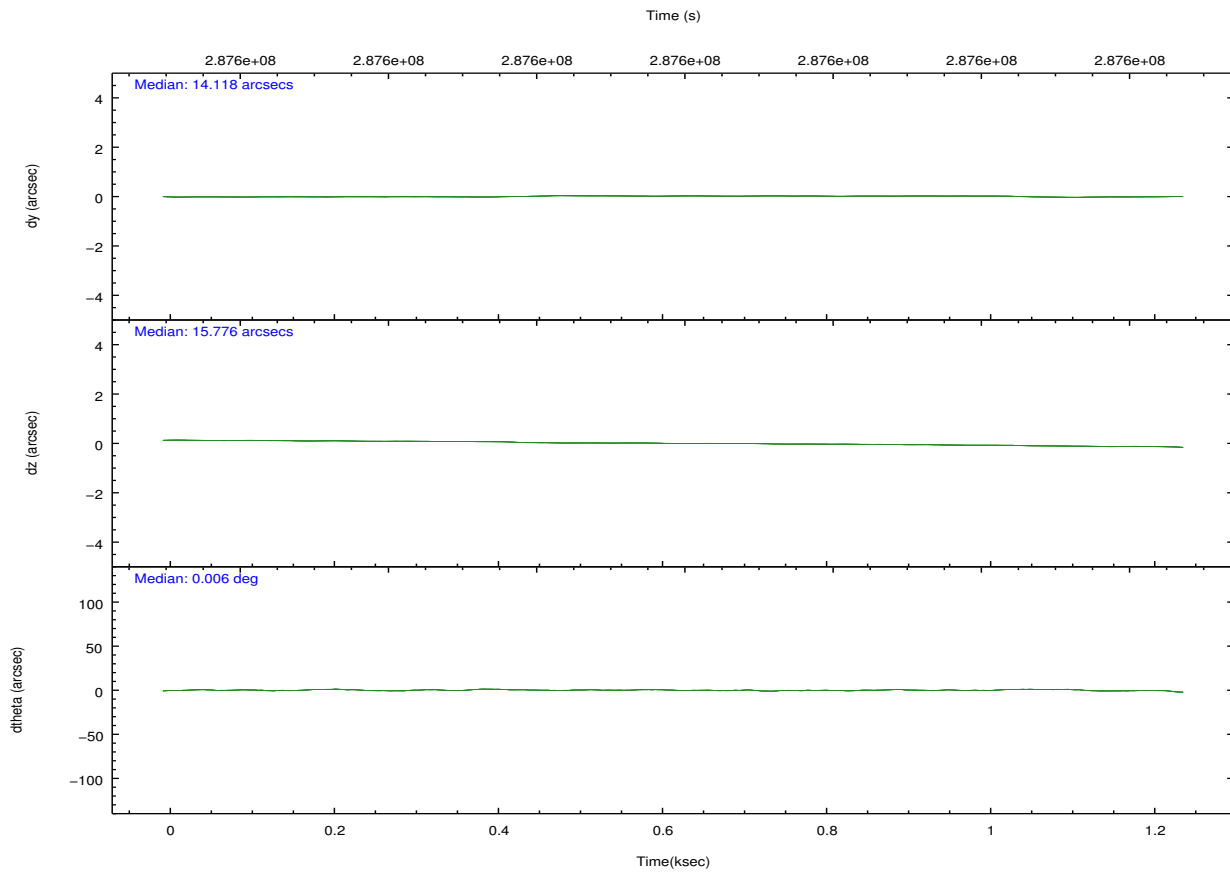
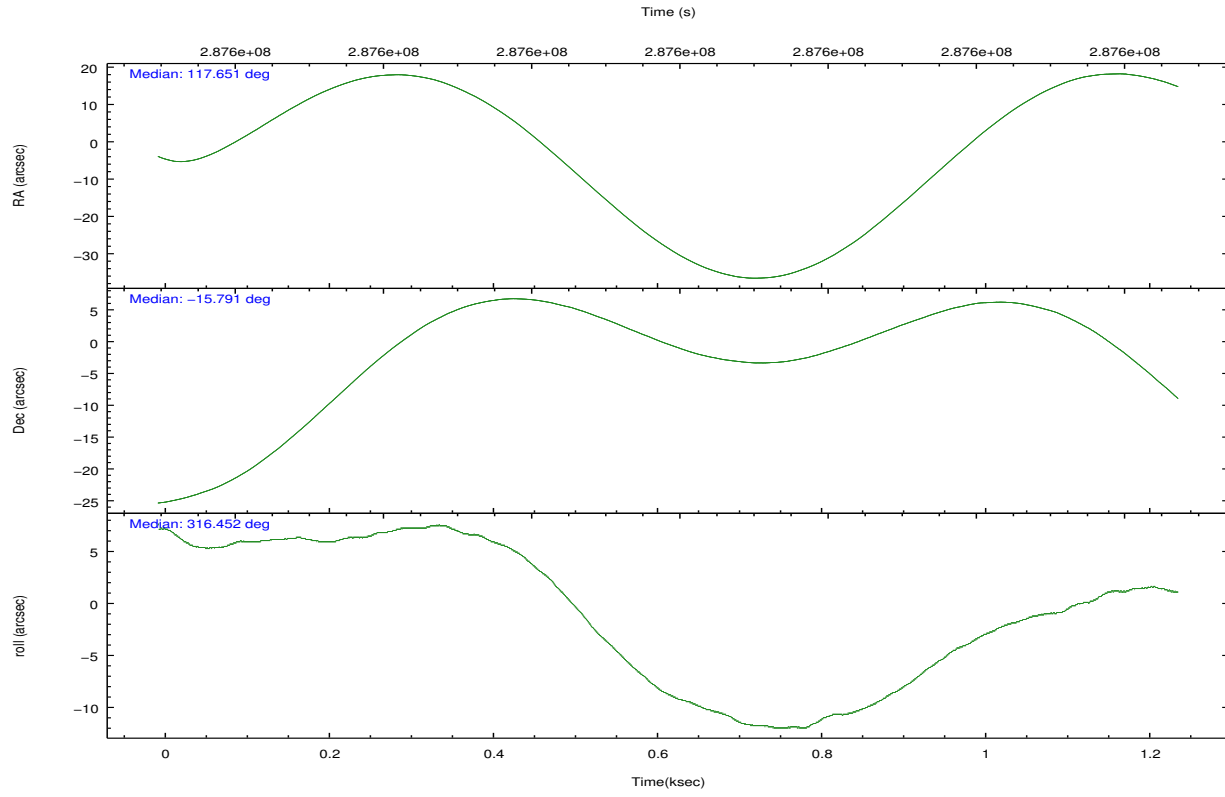
## 2.2 Compared Parameters

Parameter	Planned	Actual
Instrument	HRC	HRC
Detector	HRC-I	HRC-I
Grating	NONE	NONE
Data mode	OBSERVING	OBSERVING
Observation mode	POINTING	POINTING
[deg] Pointing RA	117.621299	117.6499471415765
[deg] Pointing Dec	-15.785860	-15.7915106250475
[deg] Pointing Roll	316.547448	316.4598351710266
[mm] SIM focus pos	-1.040293	-1.038866356238299
[mm] SIM defocus	0	0.001426264420575141
[mm] SIM translation stage pos	126.985494	126.9829799899862
[mm] SIM translation stage offset	0	0.002508901615314585
[s] Observation start time (MET)	287599513.184000	287598401.51335
Observation start date	2007-02-11T16:44:08	2007-02-11T16:26:41
[s] Observation end time (MET)	287600594.184000	287601463.701
Observation end date	2007-02-11T17:02:09	2007-02-11T17:17:43

Parameter	Planned	Actual
Obspar format version number	7	7
Obspar file type	PREDICTED	ACTUAL
Obspar update status	NONE	UPDATED

## 2.3 Aspect





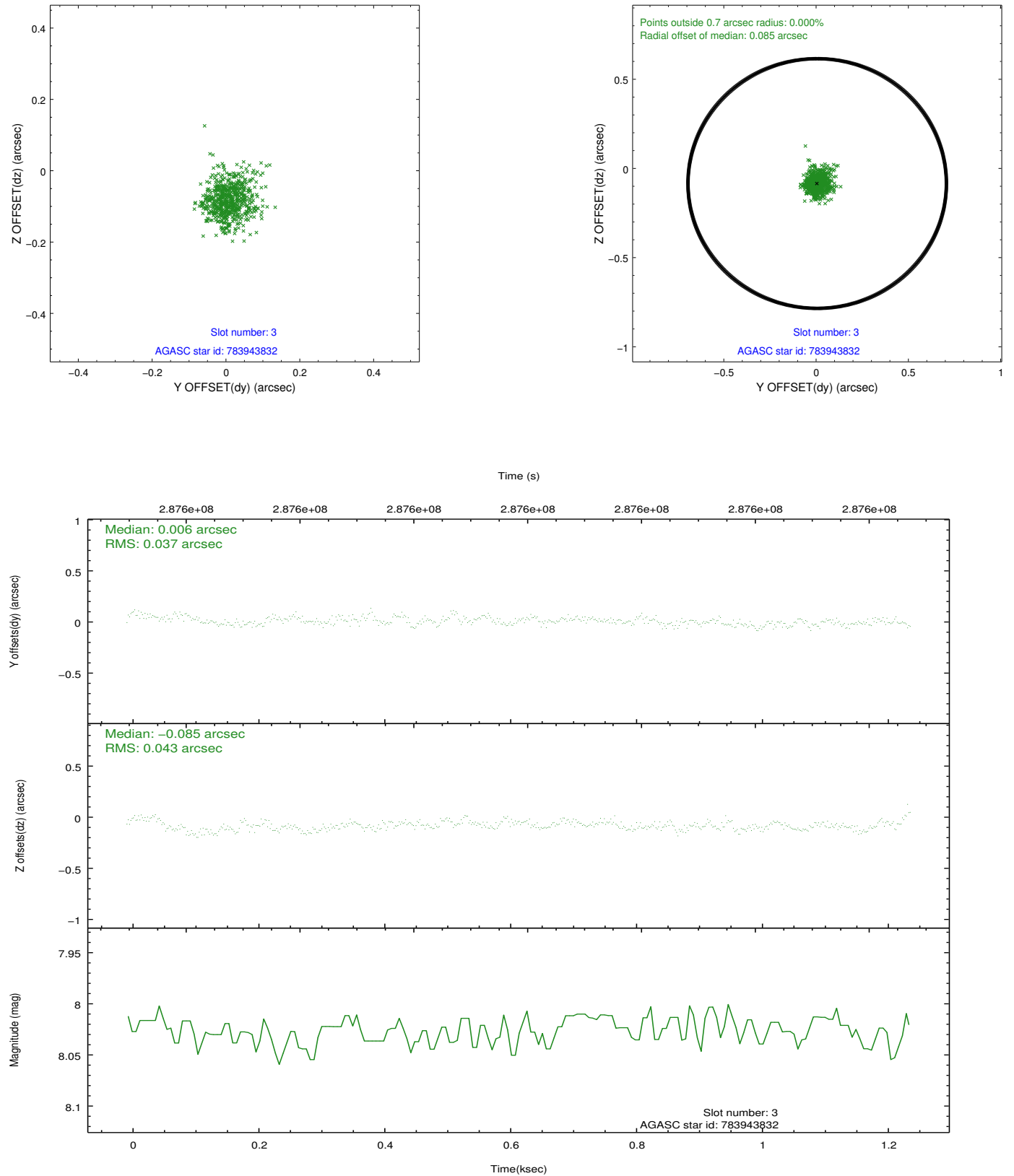
Slot Statistics

slot	status	id	mag	n_pts	med_dy	med_dz	dr1	dr2	ra	dec	mean_y	mean_z
0	FID	HRC-I-1	7.04	304	-0.092	-0.015	0.007	0.013	0.000000	0.000000	-769.94	-1303.93
1	FID	HRC-I-2	7.08	304	0.243	-0.115	0.006	0.012	0.000000	0.000000	840.50	-1309.82
2	FID	HRC-I-3	7.13	304	-0.032	0.041	0.007	0.014	0.000000	0.000000	-1195.69	996.37
3	GUIDE	783943832	8.03	608	0.006	-0.085	0.060	0.100	117.785341	-15.247382	-921.67	1796.26
4	GUIDE	783949304	9.73	608	0.026	-0.039	0.154	0.250	117.989755	-15.331447	-199.49	2066.94
5	GUIDE	783956656	8.81	608	0.046	0.046	0.087	0.151	117.858603	-16.245691	1732.10	-636.92
6	GUIDE	784082424	8.89	608	-0.053	-0.044	0.096	0.155	118.122992	-15.452280	439.95	2063.94
7	GUIDE	783966392	9.90	607	-0.036	0.116	0.149	0.254	116.915971	-16.076942	-1048.65	-2440.88

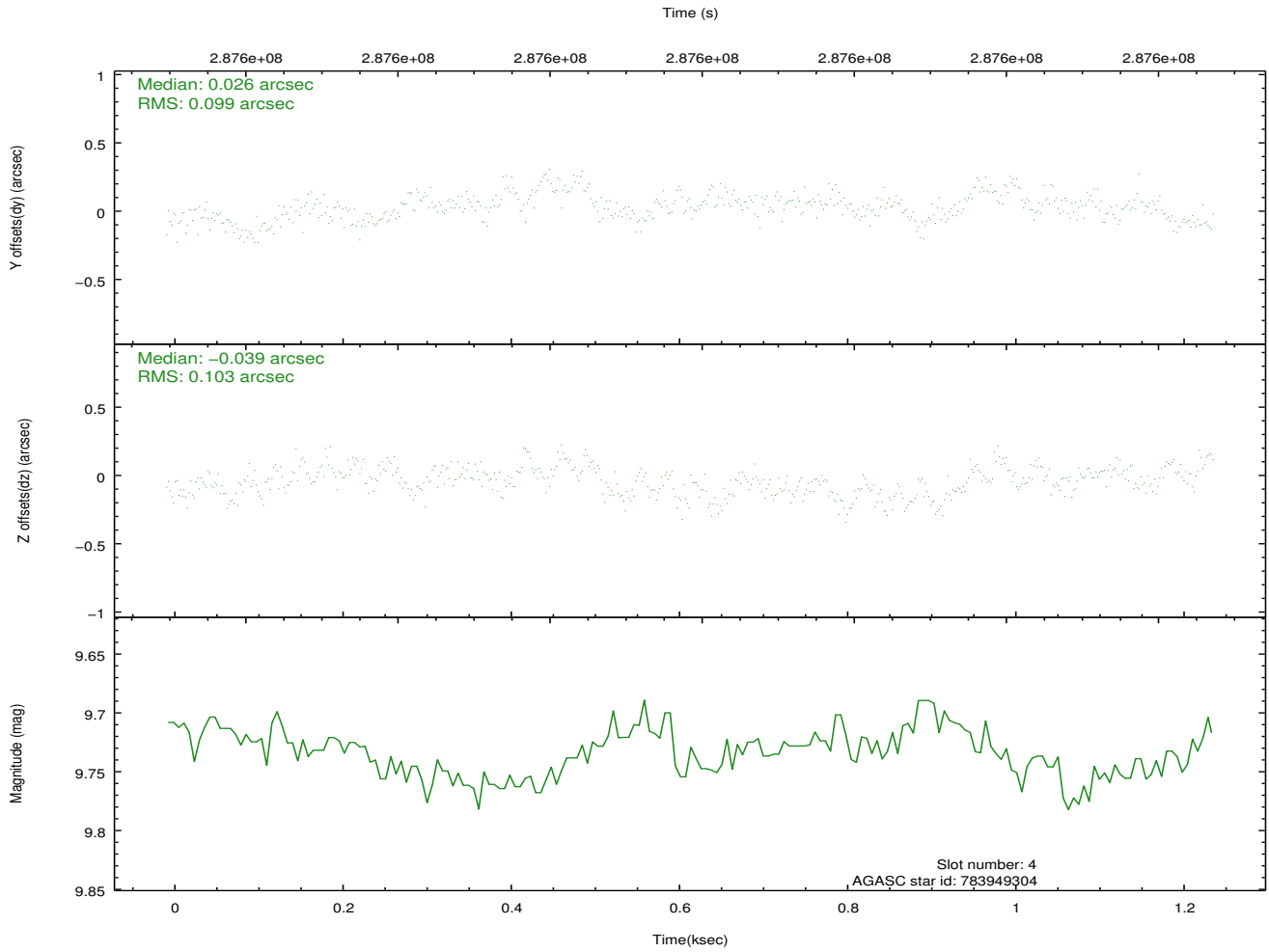
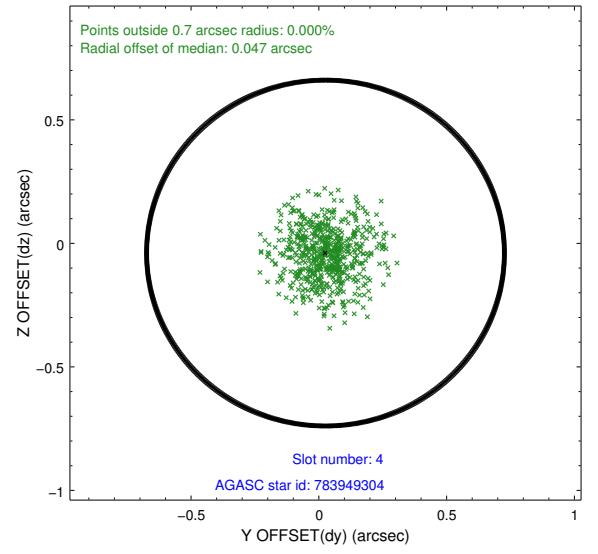
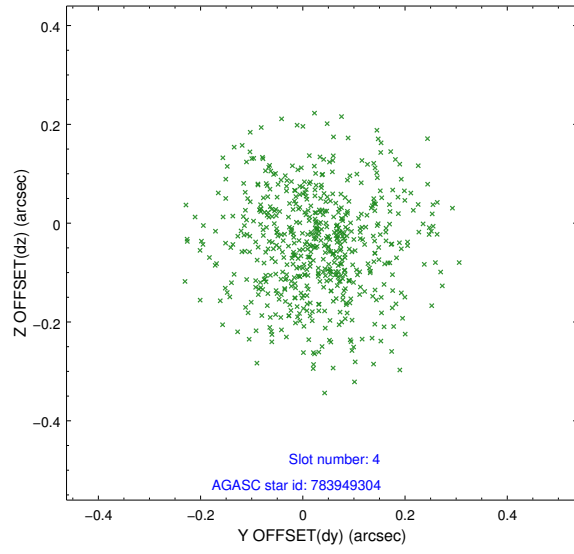


## 2.4 Star Slots

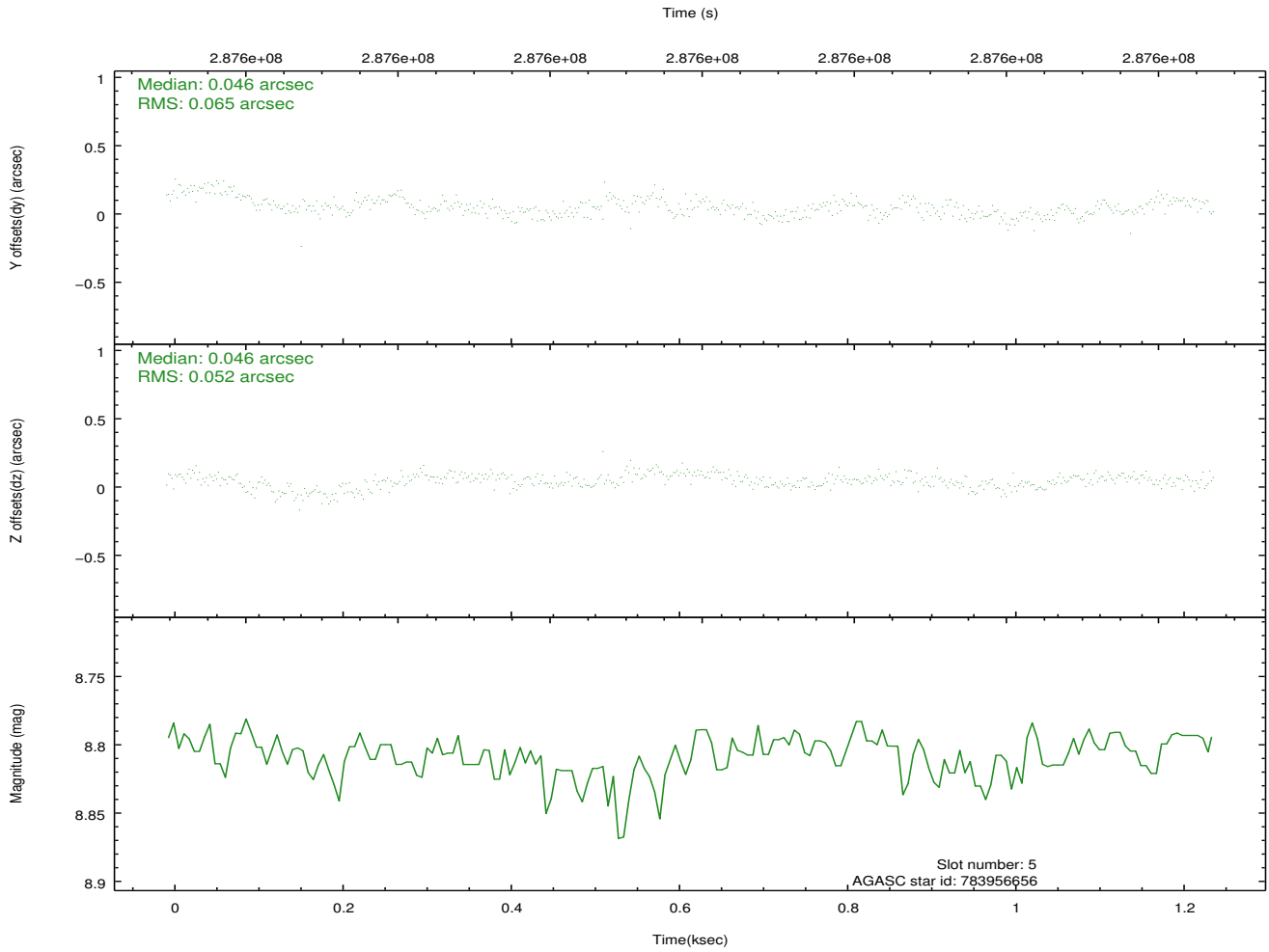
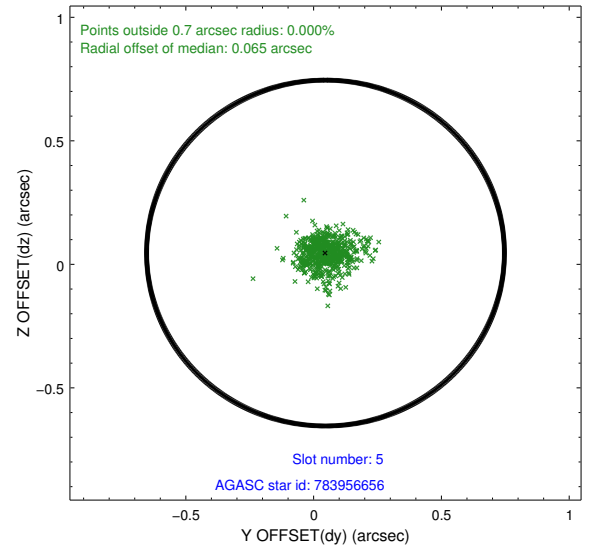
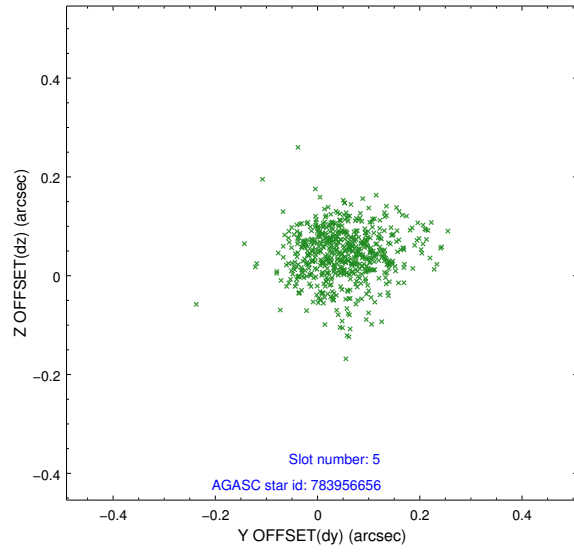
### 2.4.1 Slot 3



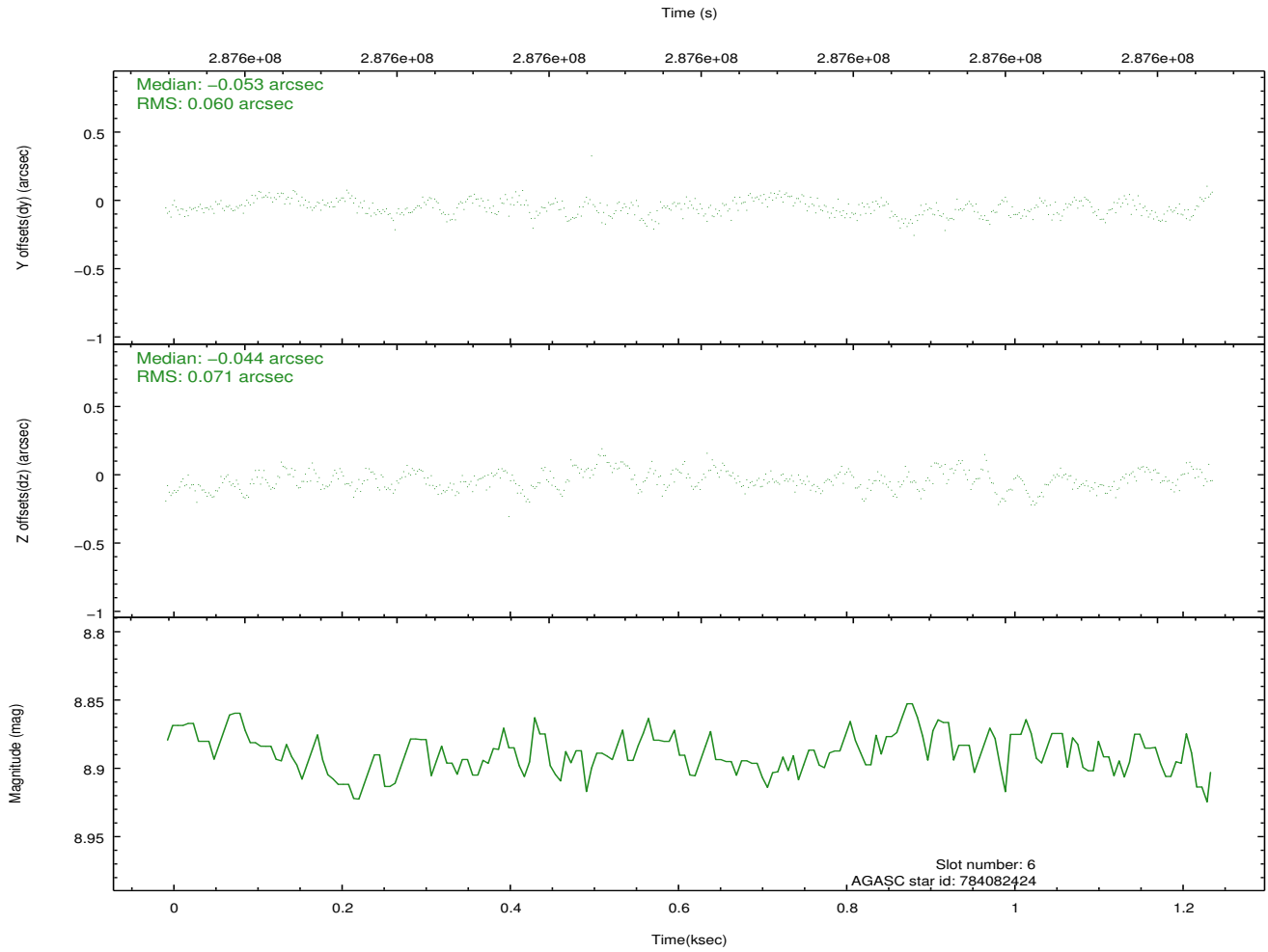
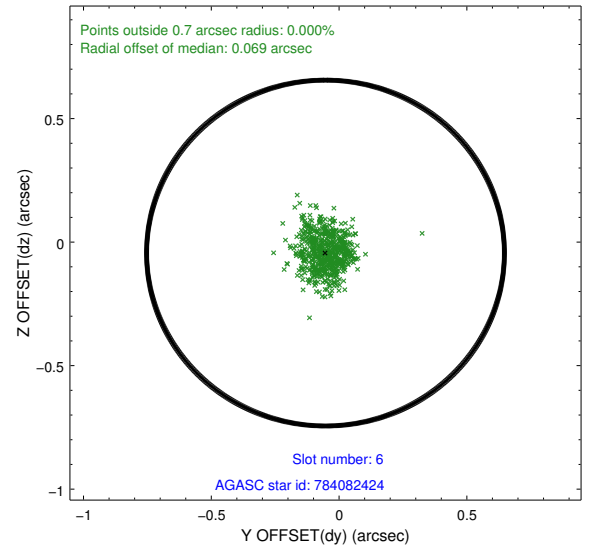
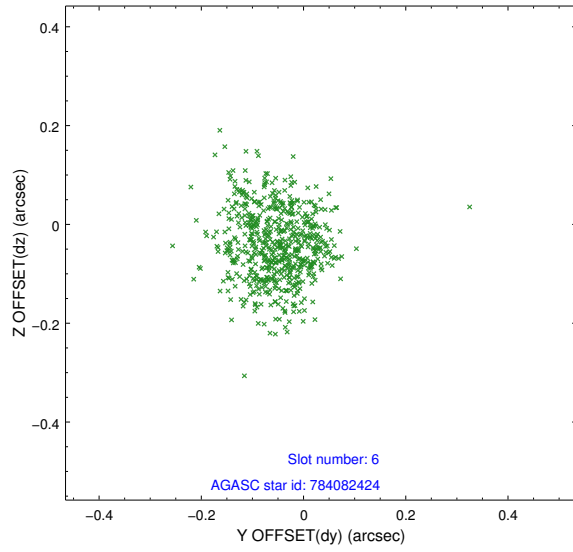
## 2.4.2 Slot 4



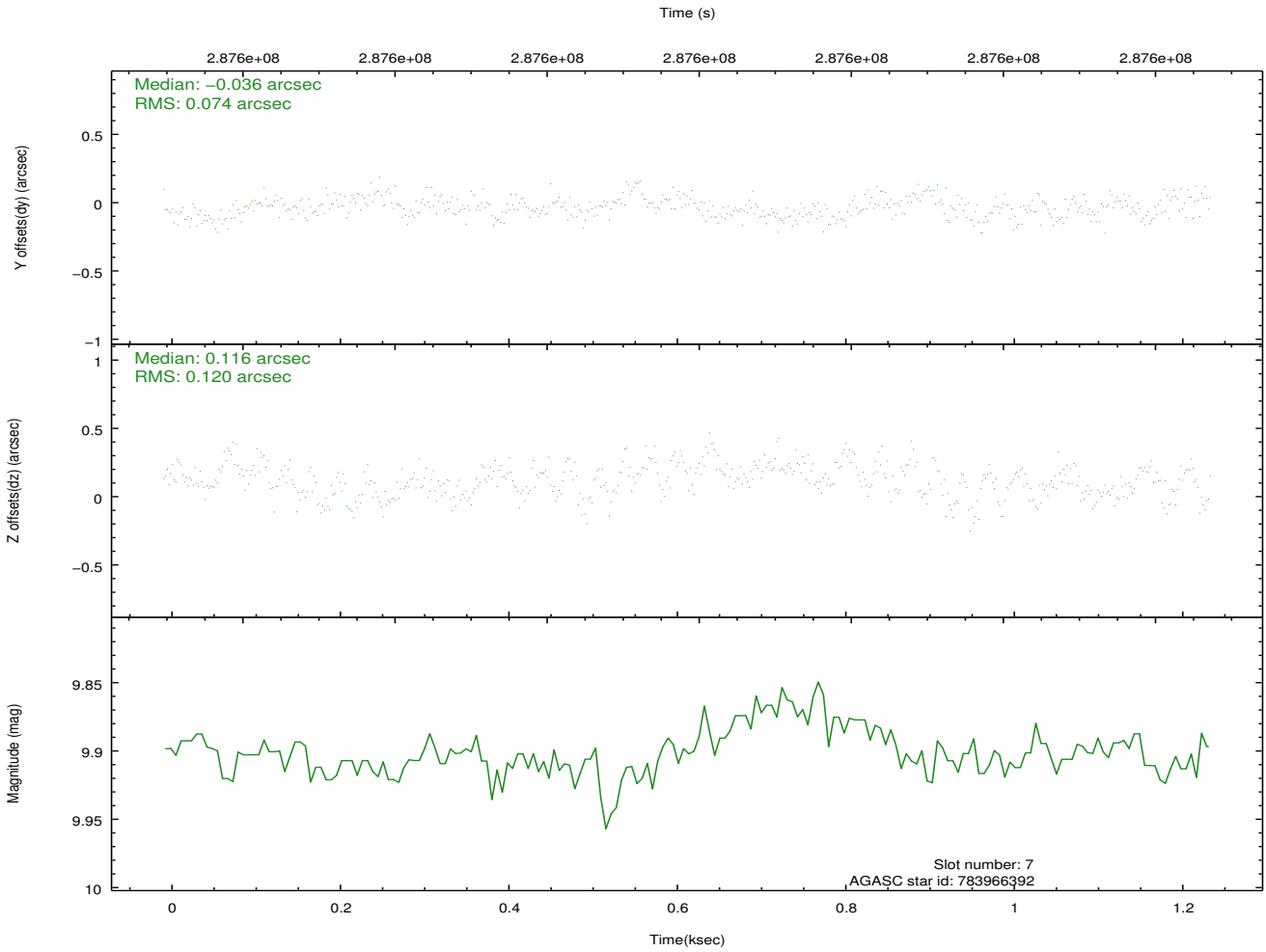
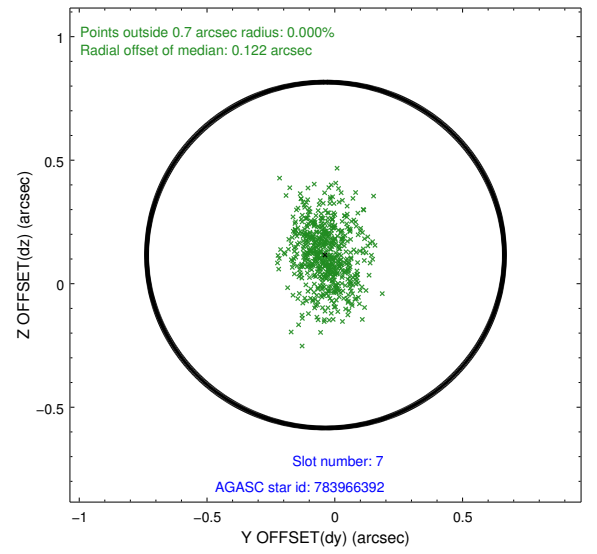
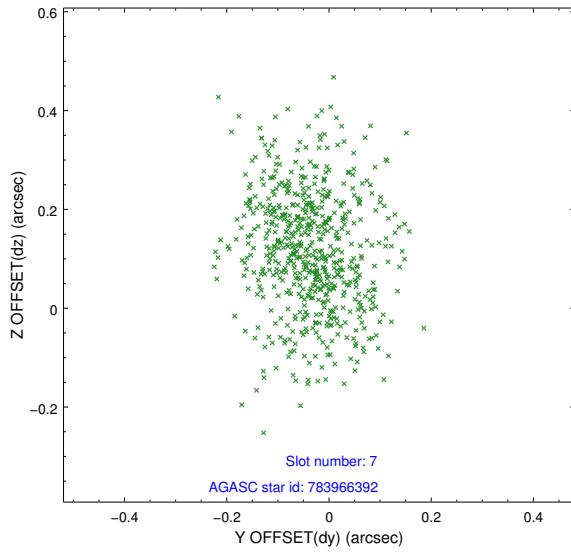
### 2.4.3 Slot 5



## 2.4.4 Slot 6

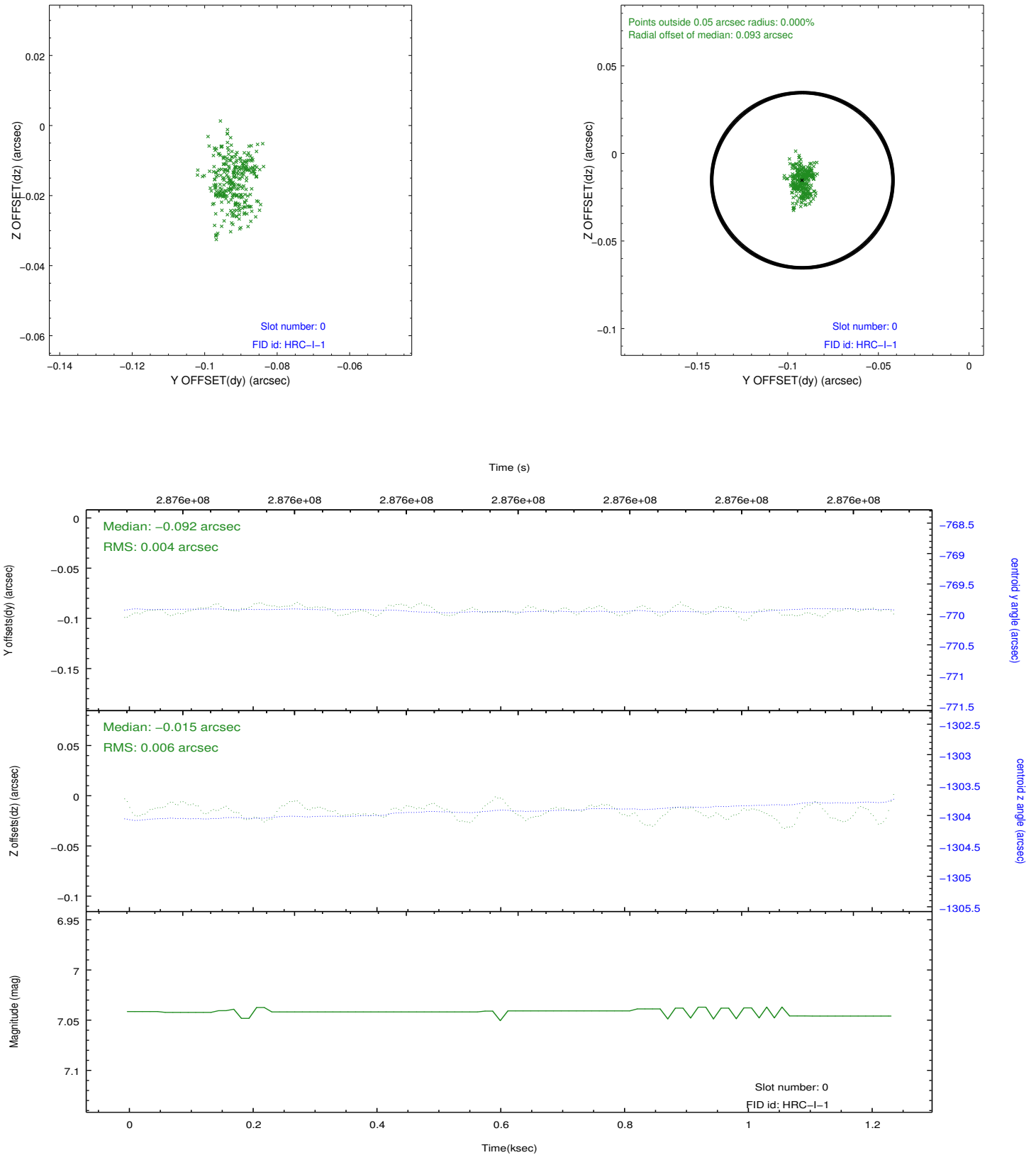


## 2.4.5 Slot 7

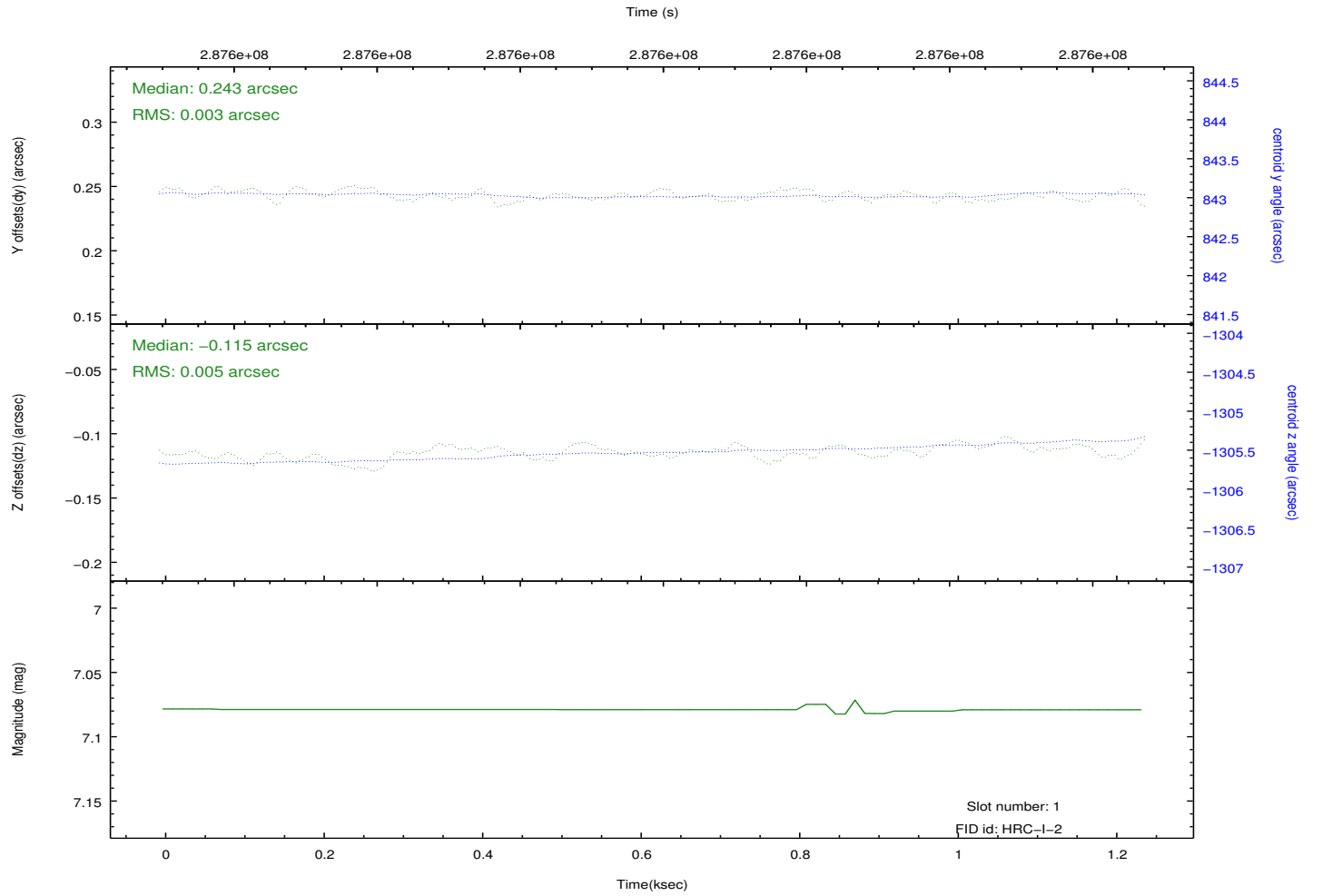
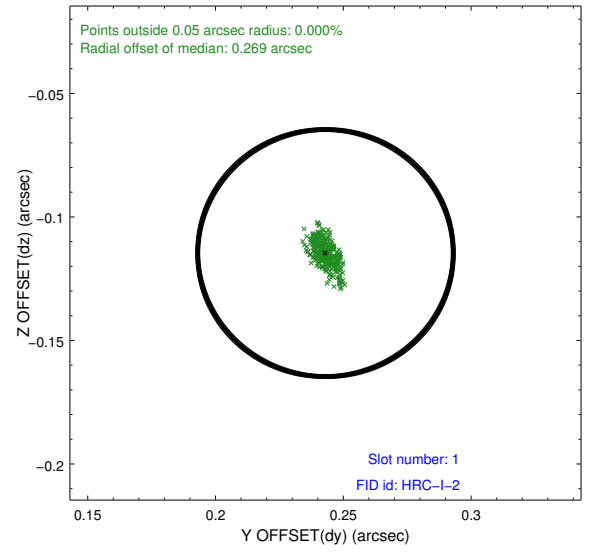
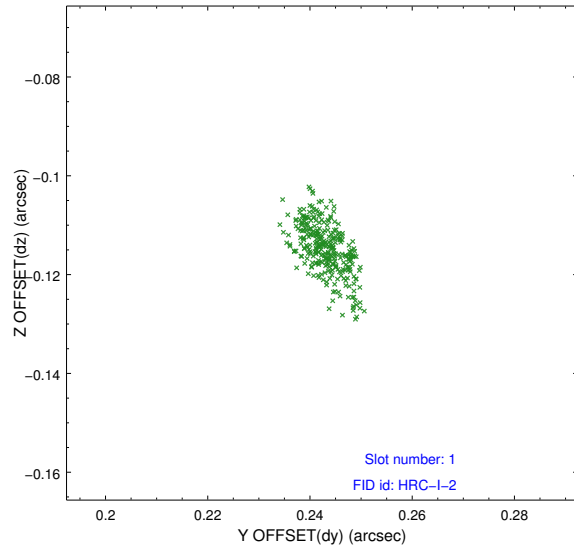


## 2.5 FID Slots

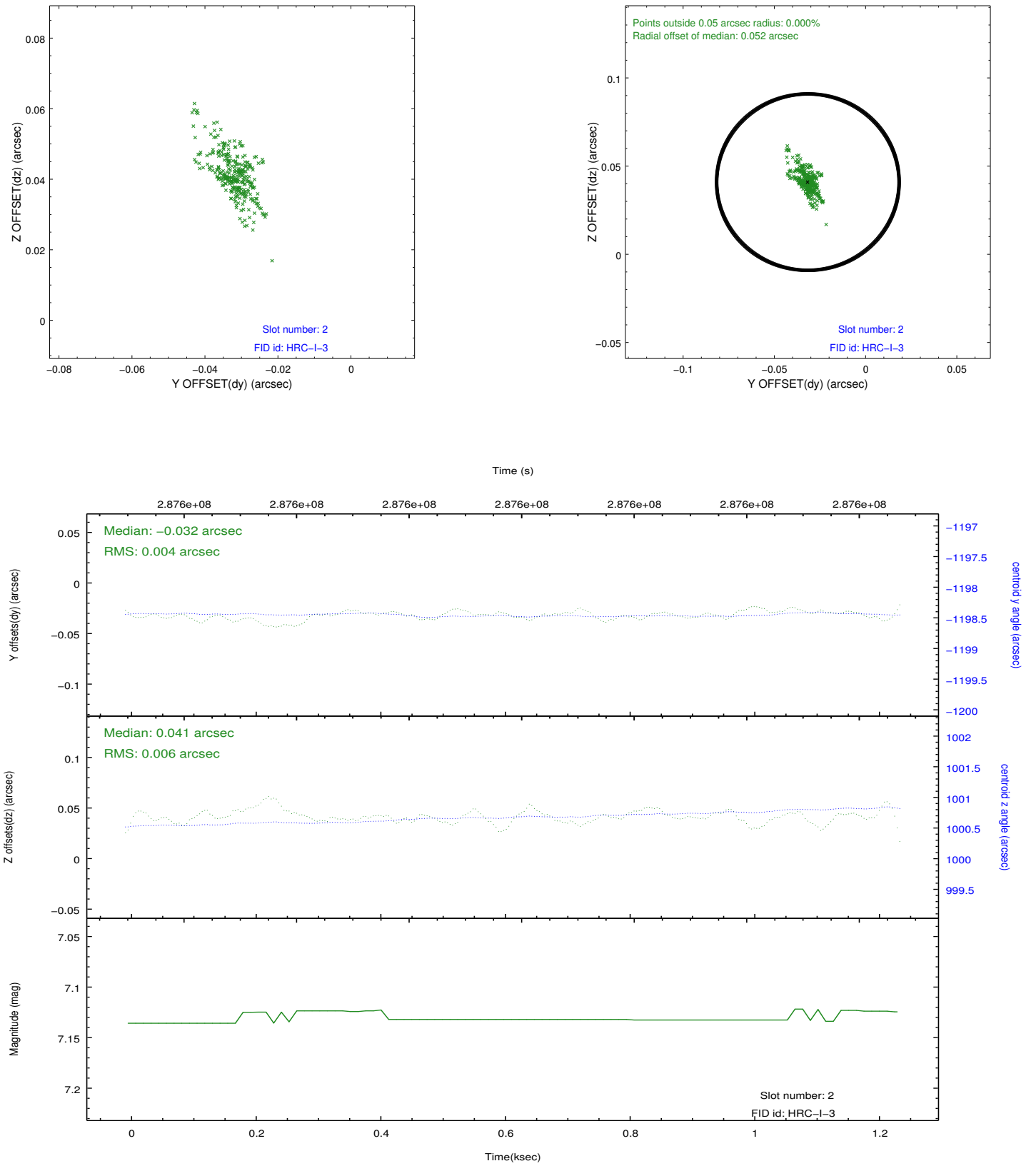
### 2.5.1 Slot 0



## 2.5.2 Slot 1



### 2.5.3 Slot 2





## A Summary

### A.1 Status

V&V Scientist	Beth Sundheim
V&V Date (YYYY-MM-DD)	2012.08.14
V&V Edition	1
V&V Disposition and Status	OK
V&V Charge Time	1.24332506

### A.2 Comments