

V&V Reference Report

L2 ASCDS Version : 8.4.4

Observation 9762 - L2 Version 2
Chandra X-Ray Center

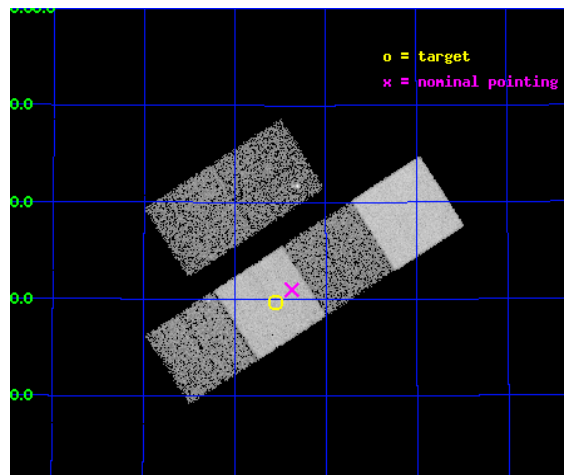
L2 Processing Date : May 3 2012

Contents

1	Front	2
2	OBI	3
2.1	OBI	3
2.1.1	Images	3
2.1.2	Bias	3
2.1.3	Parameters	4
2.1.4	Events	4
2.2	Compared Parameters	5
2.3	Aspect	6
2.4	Star Slots	9
2.4.1	Slot 3	9
2.4.2	Slot 4	10
2.4.3	Slot 5	11
2.4.4	Slot 6	12
2.4.5	Slot 7	13
2.5	FID Slots	14
2.5.1	Slot 0	14
2.5.2	Slot 1	15
2.5.3	Slot 2	16
A	Summary	17
A.1	Status	17
A.2	Comments	17

1 Front

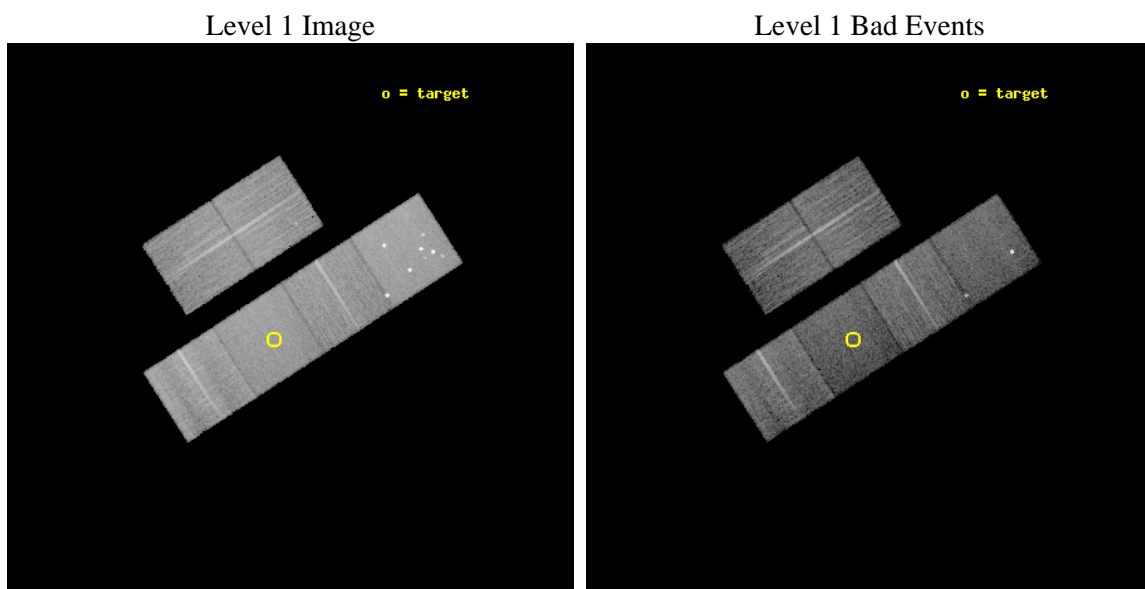
seq_num	100071	Sequence number
obs_id	9762	Observation id
title	Utilizing the exceptional outburst of Comet 17P/Holmes for probing the solar wind at 2.5 AU	Proposal title
observer	Dr. Konrad Dennerl	Principal investigator
object	17P/Holmes	Source name
dtcycle	0	
cycle	P	events from which exps? Prim/Second/Both
ra_targ	56.63936	Observer's specified target RA [deg]
dec_targ	50.49495	Observer's specified target Dec [deg]
ra_nom	56.593119137245	Nominal RA [deg]
dec_nom	50.516218243823	Nominal Dec [deg]
roll_nom	147.16083326281	Nominal Roll [deg]
revision	2	Processing version of data
ontime	10188.799962103	Sum of GTIs [s]
livetime	10059.783242024	Livetime [s]
ontime2	10185.558941901	Sum of GTIs [s]
ontime3	10185.558951795	Sum of GTIs [s]
ontime5	10188.799962103	Sum of GTIs [s]
ontime6	10188.799962103	Sum of GTIs [s]
ontime7	10188.799962103	Sum of GTIs [s]
ontime8	10185.558951855	Sum of GTIs [s]
l2events	121329	Number of level 2 events



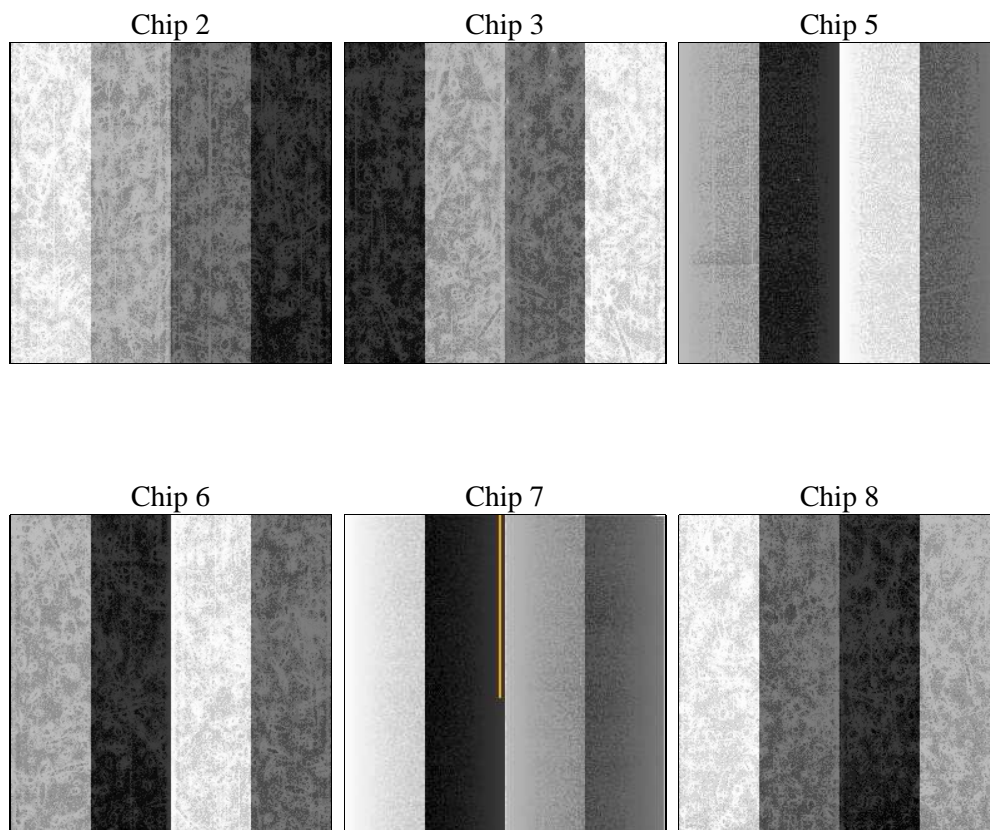
2 OBI

2.1 OBI

2.1.1 Images



2.1.2 Bias



2.1.3 Parameters

obi_num	0	Obi number	sched_exp_time	10000.000000	[s] Scheduled observation exposure time
ascdsver	8.4.4	Processing system revision	ontime	10188.799962103	Sum of GTIs [s]
caldsver	4.4.9	 	ontime2	10185.558941901	Sum of GTIs [s]
date	2012-05-03T15:21:58	Date and time of file creation	ontime3	10185.558951795	Sum of GTIs [s]
revision	2	Processing version of data	ontime5	10188.799962103	Sum of GTIs [s]
			ontime6	10188.799962103	Sum of GTIs [s]
			ontime7	10188.799962103	Sum of GTIs [s]
			ontime8	10185.558951855	Sum of GTIs [s]
			l1events	599552	Number of level 1 events

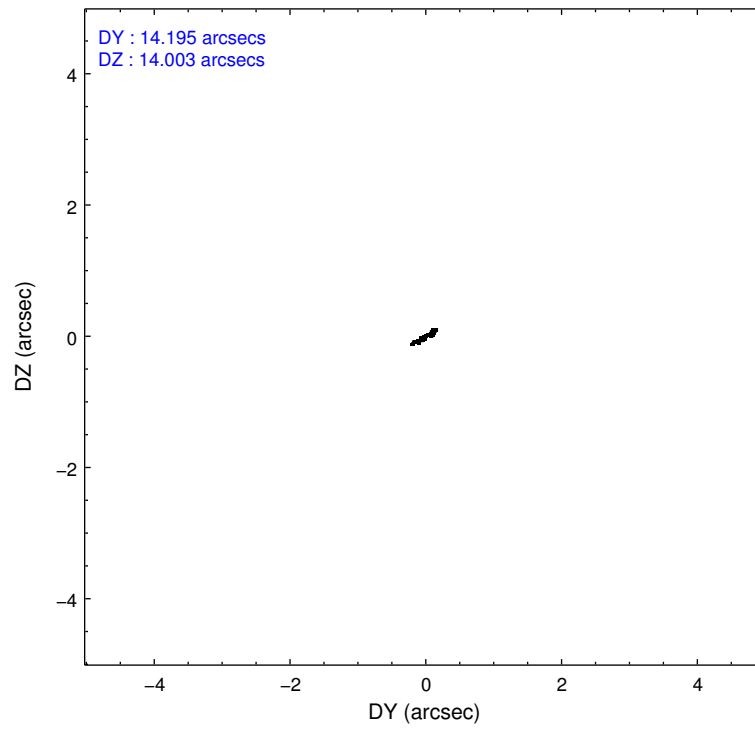
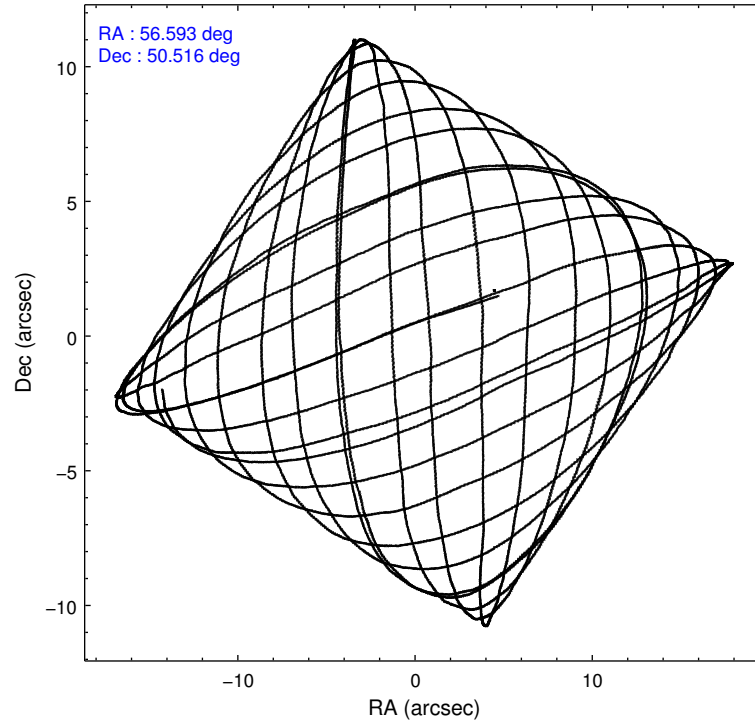
2.1.4 Events

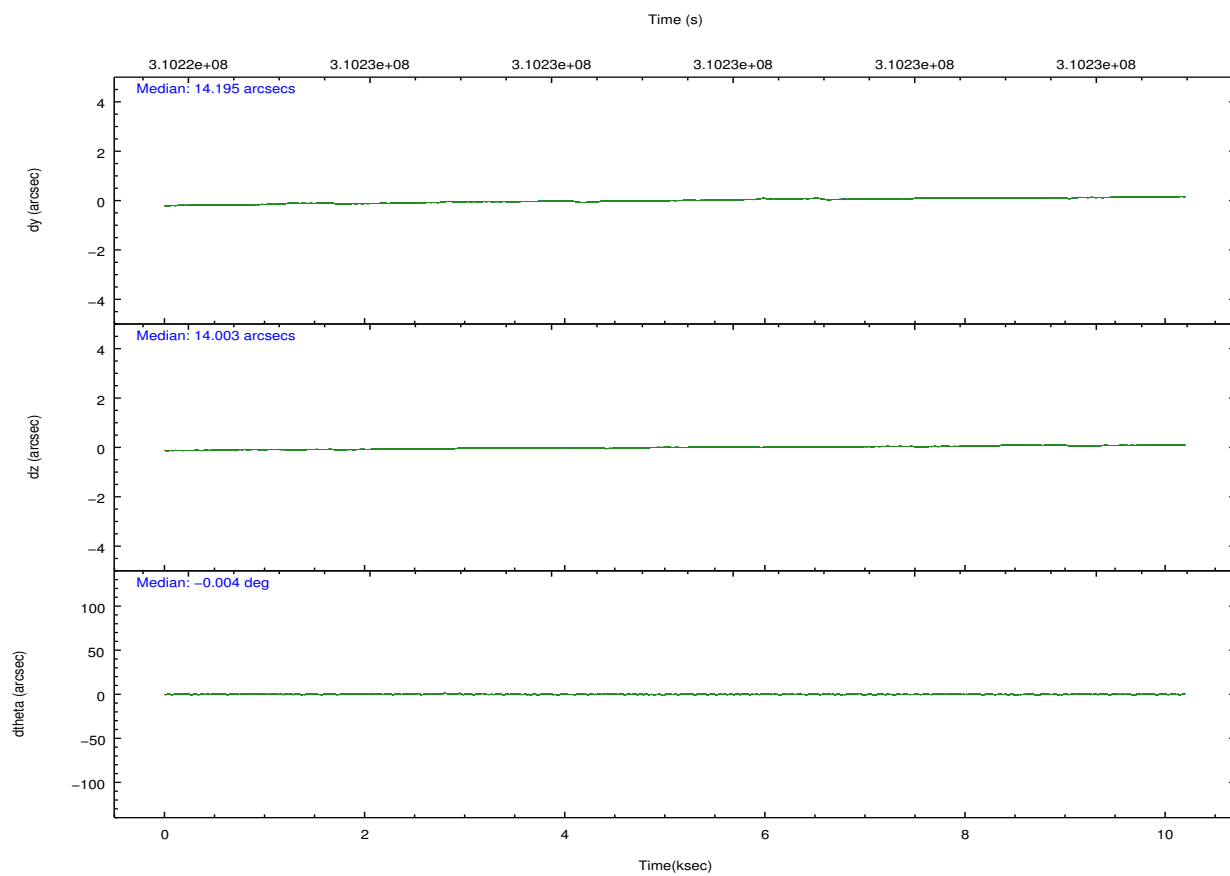
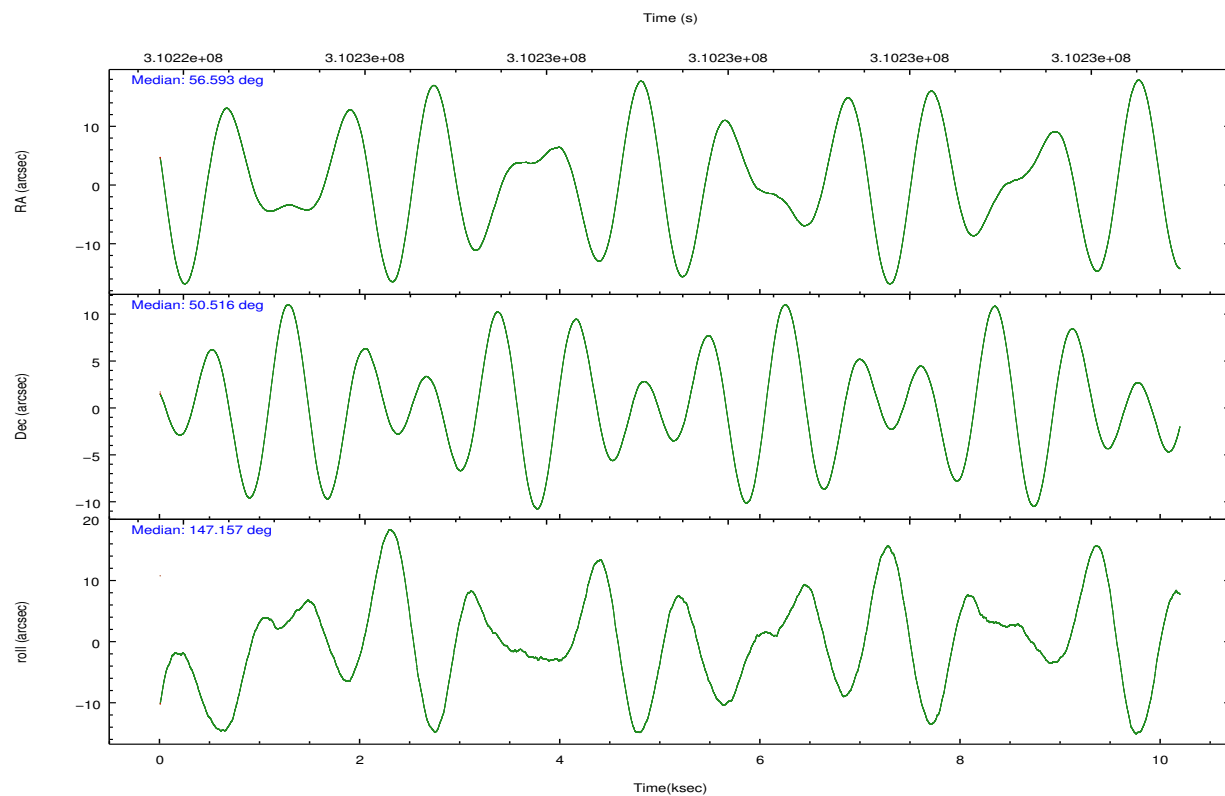
	ccd 2	ccd 3	ccd 5	ccd 6	ccd 7	ccd 8		ccd 2	ccd 3	ccd 5	ccd 6	ccd 7	ccd 8
level 1 events	94021	83578	133667	88540	93811	105935	grade 0 events	3109	2668	14241	3027	3733	7713
rejected events	85886	75961	65684	80115	52803	80871		3%	3%	10%	3%	3%	7%
rejected %	91%	90%	49%	90%	56%	76%	grade 1 events	66	56	236	28	114	92
								0%	0%	0%	0%	0%	0%
							grade 2 events	2082	1722	17935	1929	8427	5886
								2%	2%	13%	2%	8%	5%
							grade 3 events	869	944	2422	946	3843	2746
								0%	1%	1%	1%	4%	2%
							grade 4 events	894	921	2133	930	3818	2525
								0%	1%	1%	1%	4%	2%
							grade 5 events	2798	3336	9308	3443	9903	4853
								2%	3%	6%	3%	10%	4%
							grade 6 events	1418	1625	33394	1880	22476	6856
								1%	1%	24%	2%	23%	6%
							grade 7 events	82785	72306	53998	76357	41497	75264
								88%	86%	40%	86%	44%	71%

2.2 Compared Parameters

Parameter	Planned	Actual	Parameter	Planned	Actual
Instrument	ACIS	ACIS	Obspar format version number	7	7
Detector	ACIS-235678	ACIS-235678	Obspar file type	PREDICTED	ACTUAL
Grating	NONE	NONE	Obspar update status	NONE	UPDATED
Data mode	VFAINT	VFAINT	CCD I0 on	N	N
Observation mode	POINTING	POINTING	CCD I1 on	N	N
[deg] Pointing RA	56.636146	56.59311913724492	CCD I2 on	Y	Y
[deg] Pointing Dec	50.515259	50.51621824382281	CCD I3 on	Y	Y
[deg] Pointing Roll	146.970991	147.1608332628144	CCD S0 on	N	N
[mm] SIM focus pos	-0.684267	-0.6828225247311905	CCD S1 on	Y	Y
[mm] SIM defocus	0	0.001444936568705701	CCD S2 on	Y	Y
[mm] SIM translation stage pos	-190.132523	-190.1425803651734	CCD S3 on	Y	Y
[mm] SIM translation stage offset	0	0.01005778216563158	CCD S4 on	O1	Y
[s] Observation start time (MET)	310224454.184000	310224078.34635	CCD S5 on	N	N
Observation start date	2007-10-31T13:26:29	2007-10-31T13:21:18	Number of optional ACIS chips dropped	0	0
[s] Observation end time (MET)	310234454.184000	310234588.18435	On-chip summing requested	N	N
Observation end date	2007-10-31T16:13:09	2007-10-31T16:16:28	Subarray requested	NONE	NONE
Read mode	TIMED	TIMED	Alternating exposures requested	N	N
			[s] Primary exposure time	0.000000	3.2

2.3 Aspect



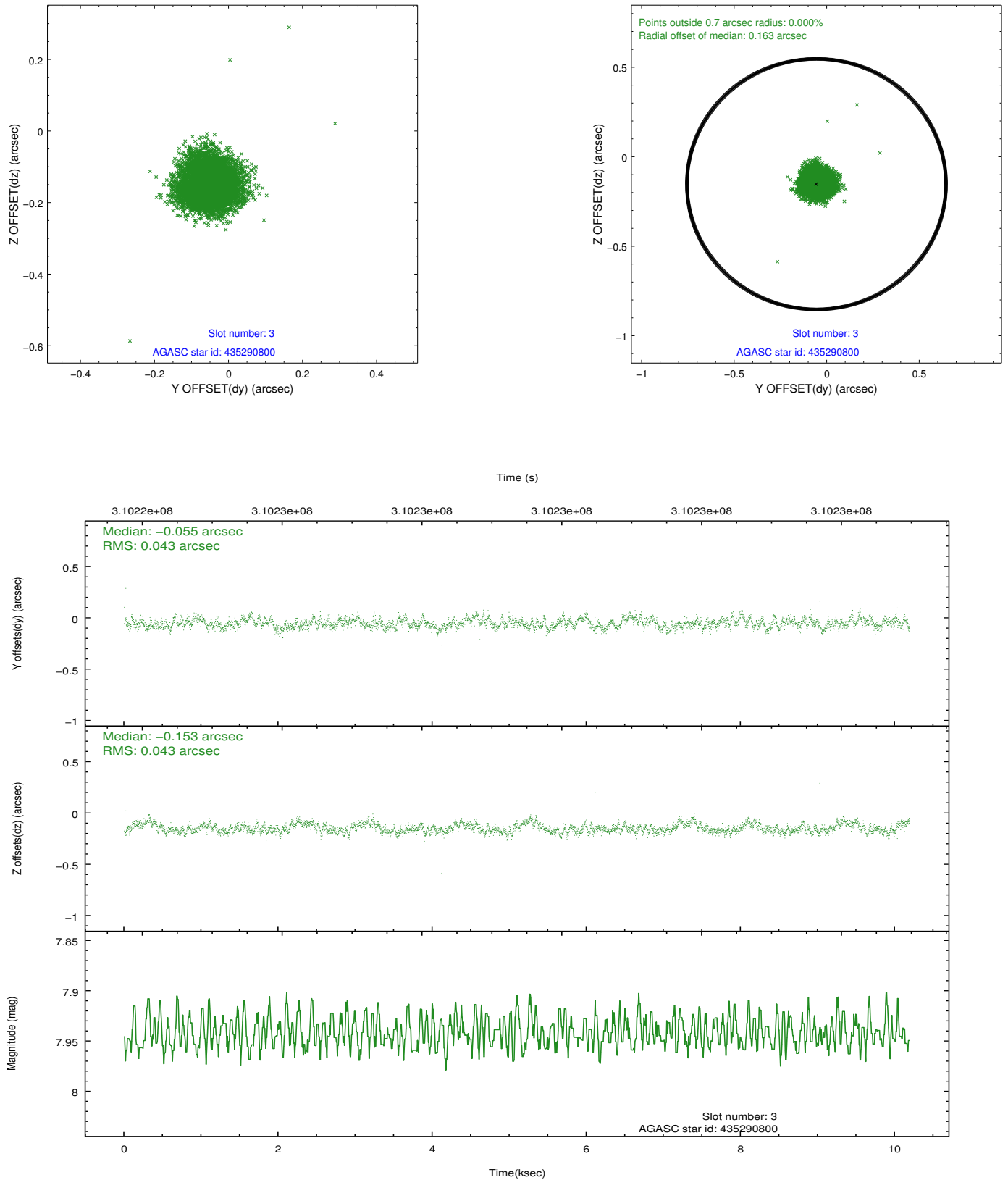


Slot Statistics

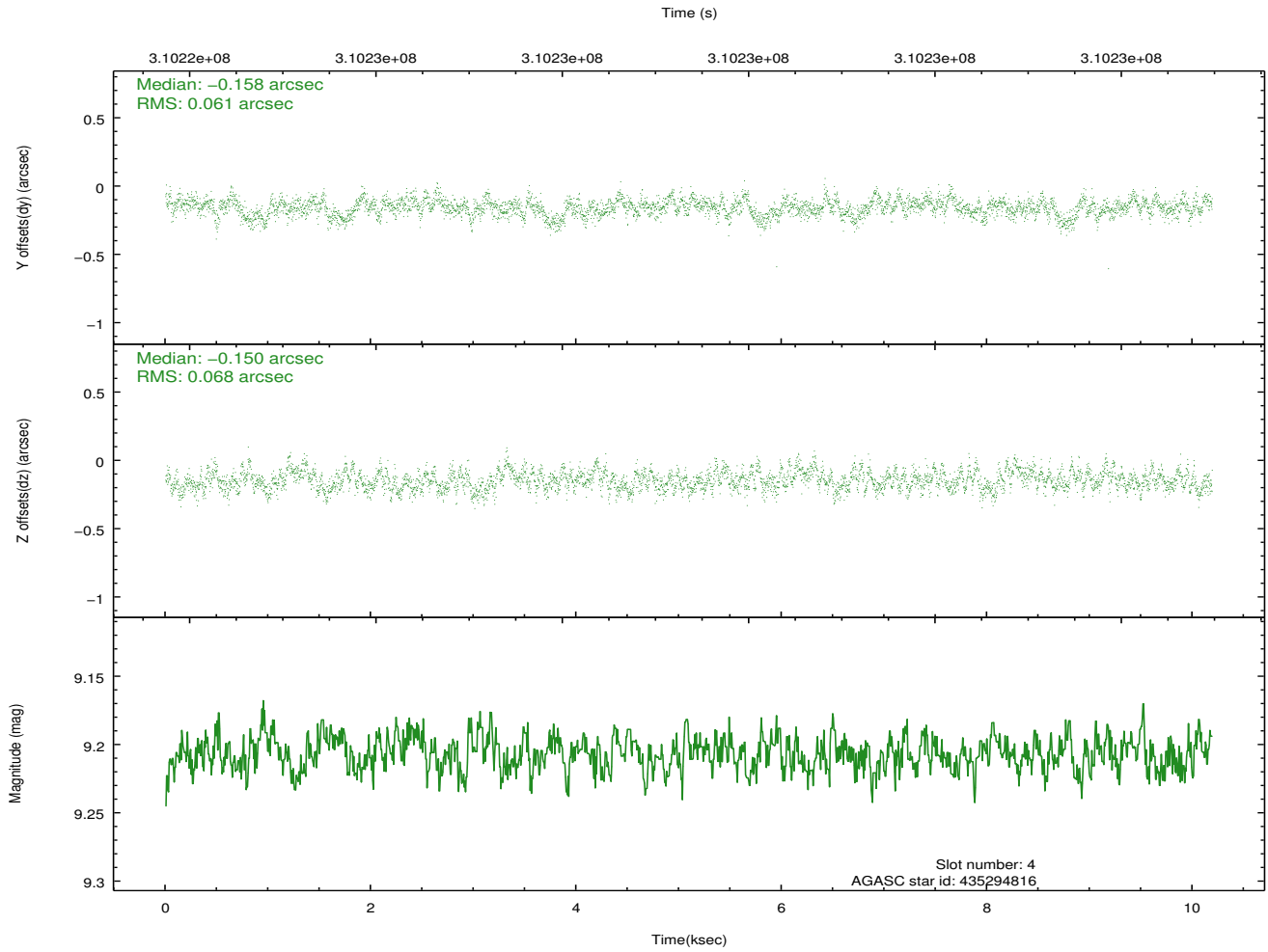
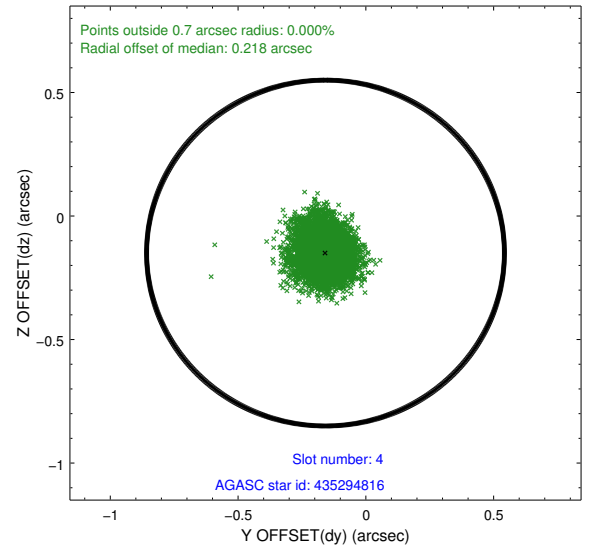
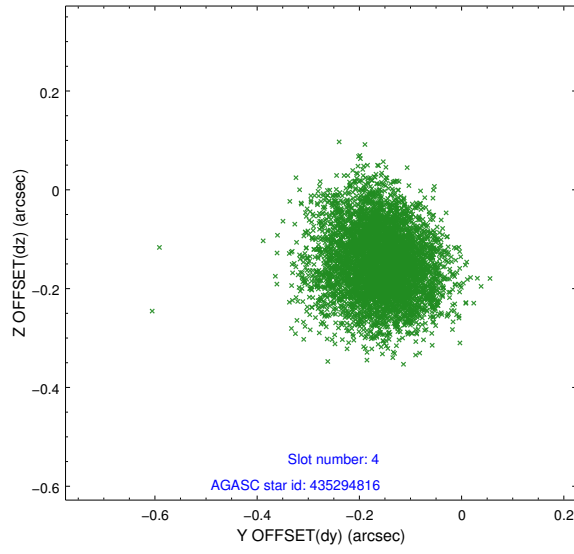
slot	status	id	mag	n_pts	med_dy	med_dz	dr1	dr2	ra	dec	mean_y	mean_z
0	FID	ACIS-S-2	7.10	2485	-0.066	-0.057	0.009	0.014	0.000000	0.000000	-767.21	-1735.35
1	FID	ACIS-S-4	7.19	2485	0.194	0.047	0.009	0.015	0.000000	0.000000	2146.09	172.69
2	FID	ACIS-S-5	7.23	2486	-0.159	0.019	0.007	0.011	0.000000	0.000000	-1819.48	166.93
3	GUIDE	435290800	7.94	4972	-0.055	-0.153	0.064	0.100	56.171214	50.542921	947.80	493.52
4	GUIDE	435294816	9.21	4969	-0.158	-0.150	0.098	0.156	55.731774	50.186096	1108.96	2119.12
5	GUIDE	436994544	9.66	4968	0.162	0.114	0.129	0.204	57.831829	50.520725	-2271.03	-1526.04
6	GUIDE	437519928	6.59	4971	-0.122	0.139	0.050	0.079	57.162279	50.844930	-353.73	-1650.65
7	GUIDE	437529824	6.58	4971	0.165	0.045	0.086	0.133	57.075305	50.736763	-402.21	-1216.72

2.4 Star Slots

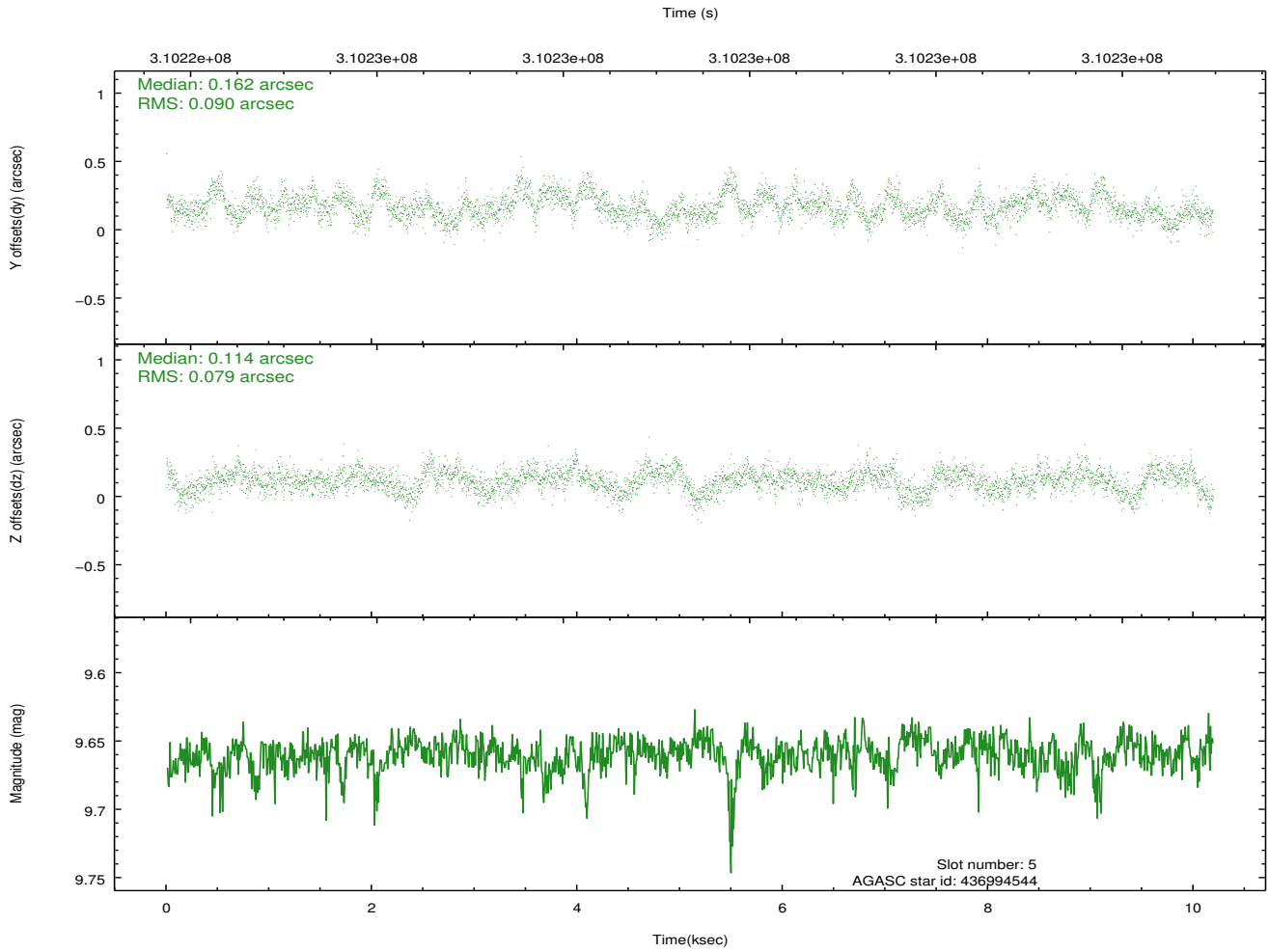
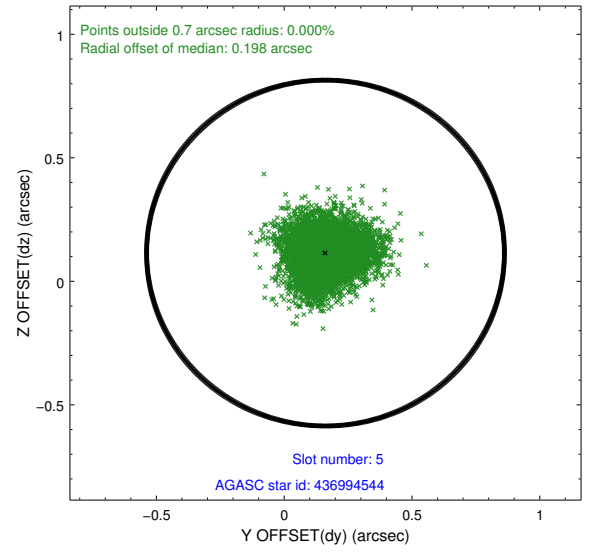
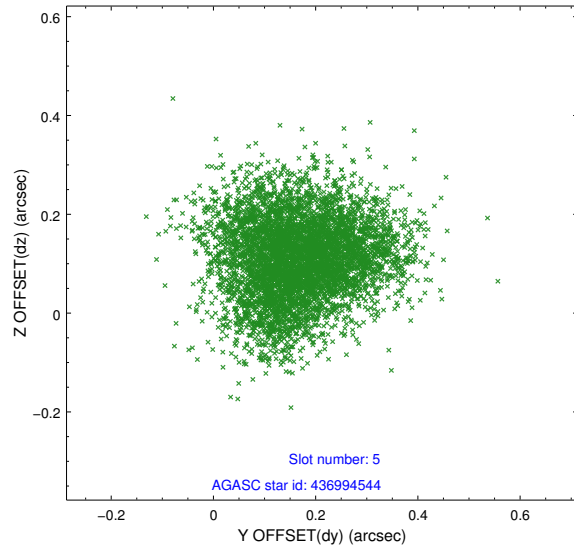
2.4.1 Slot 3



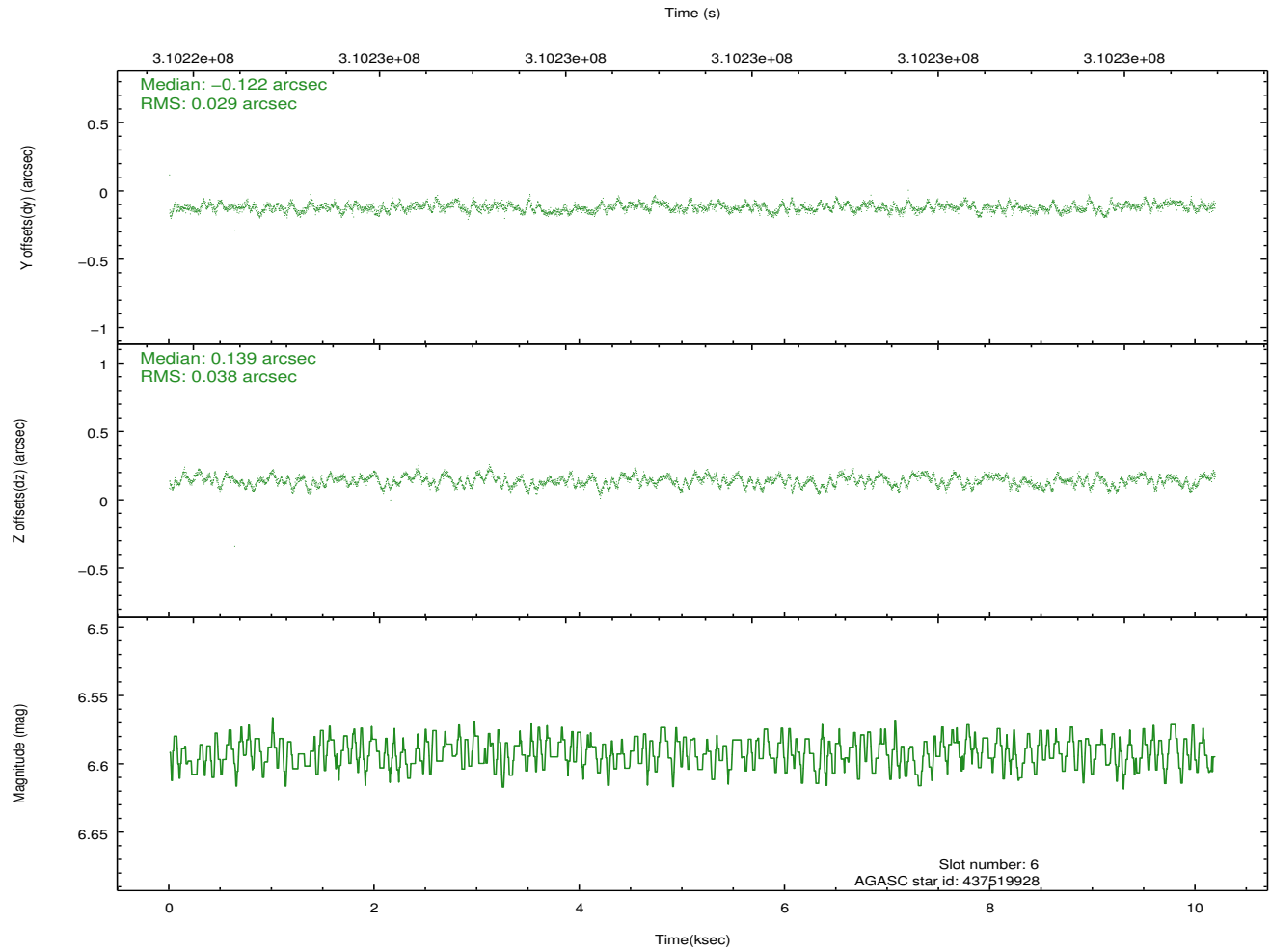
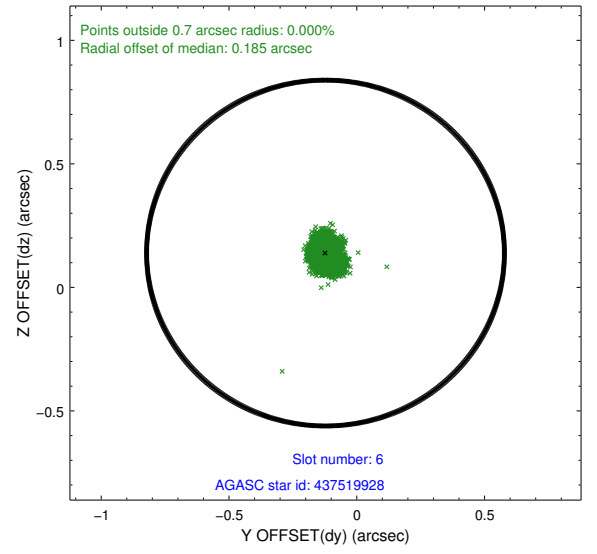
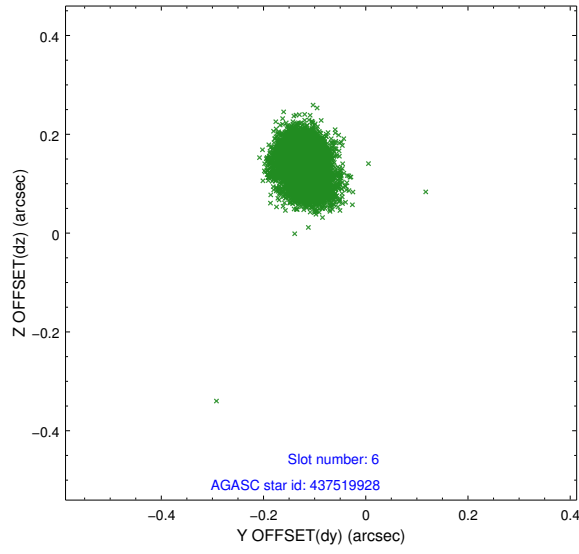
2.4.2 Slot 4



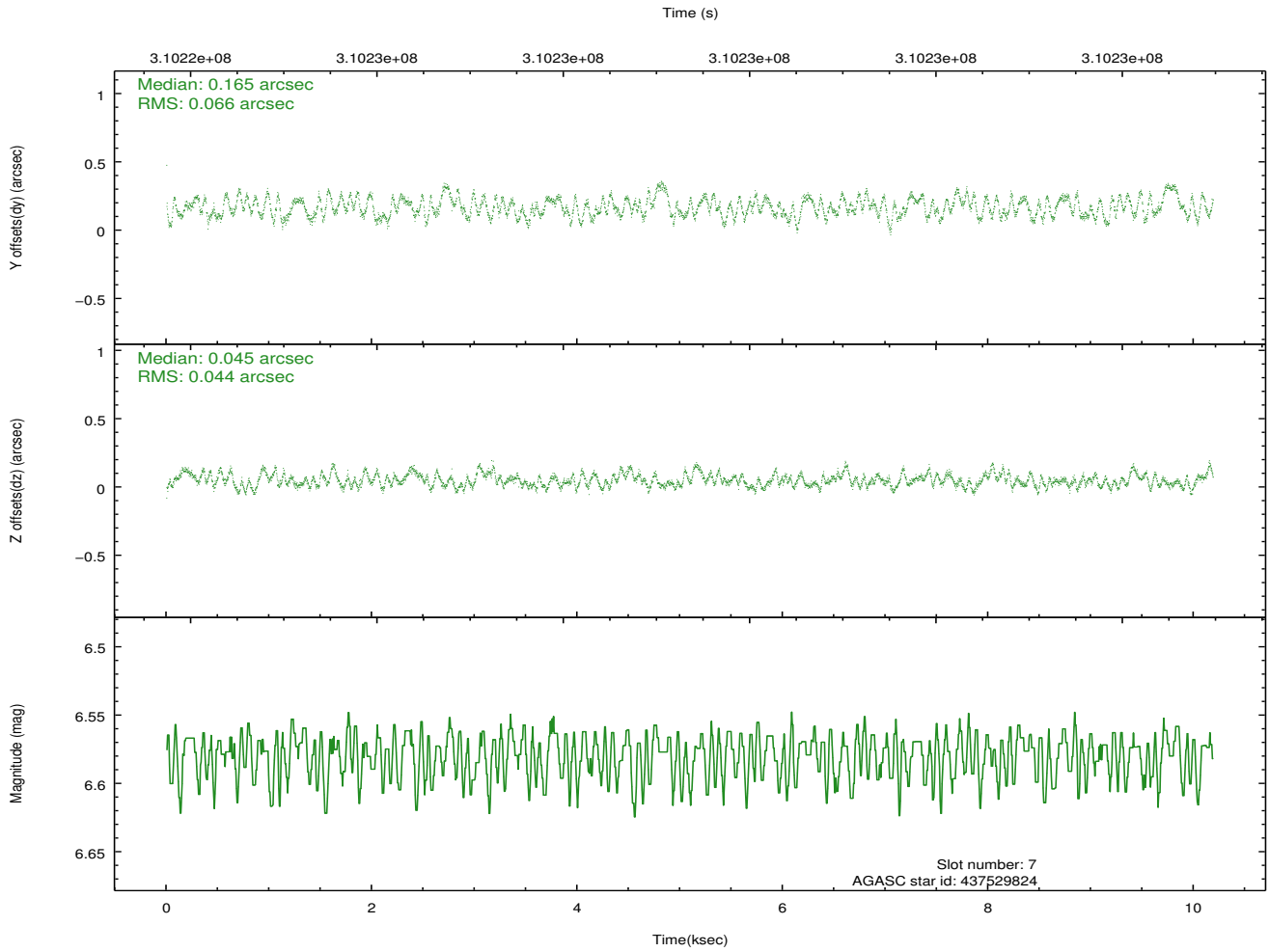
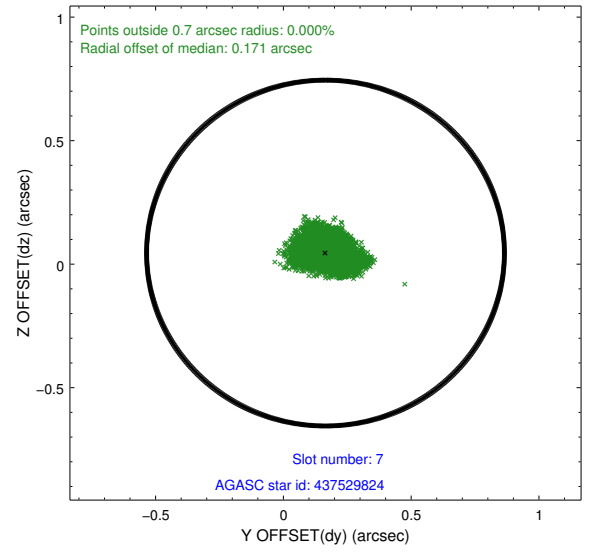
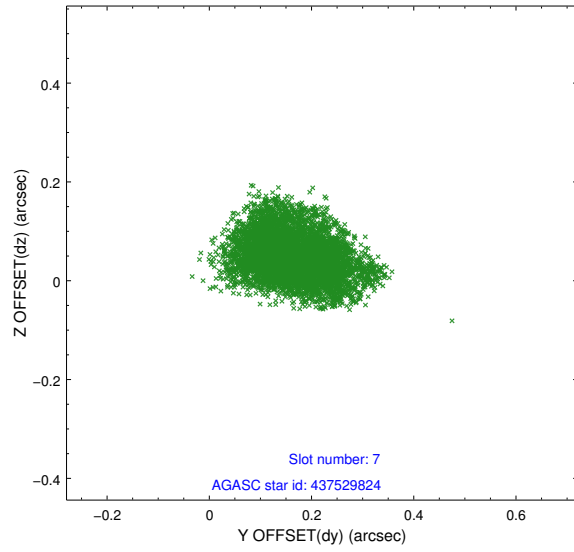
2.4.3 Slot 5



2.4.4 Slot 6

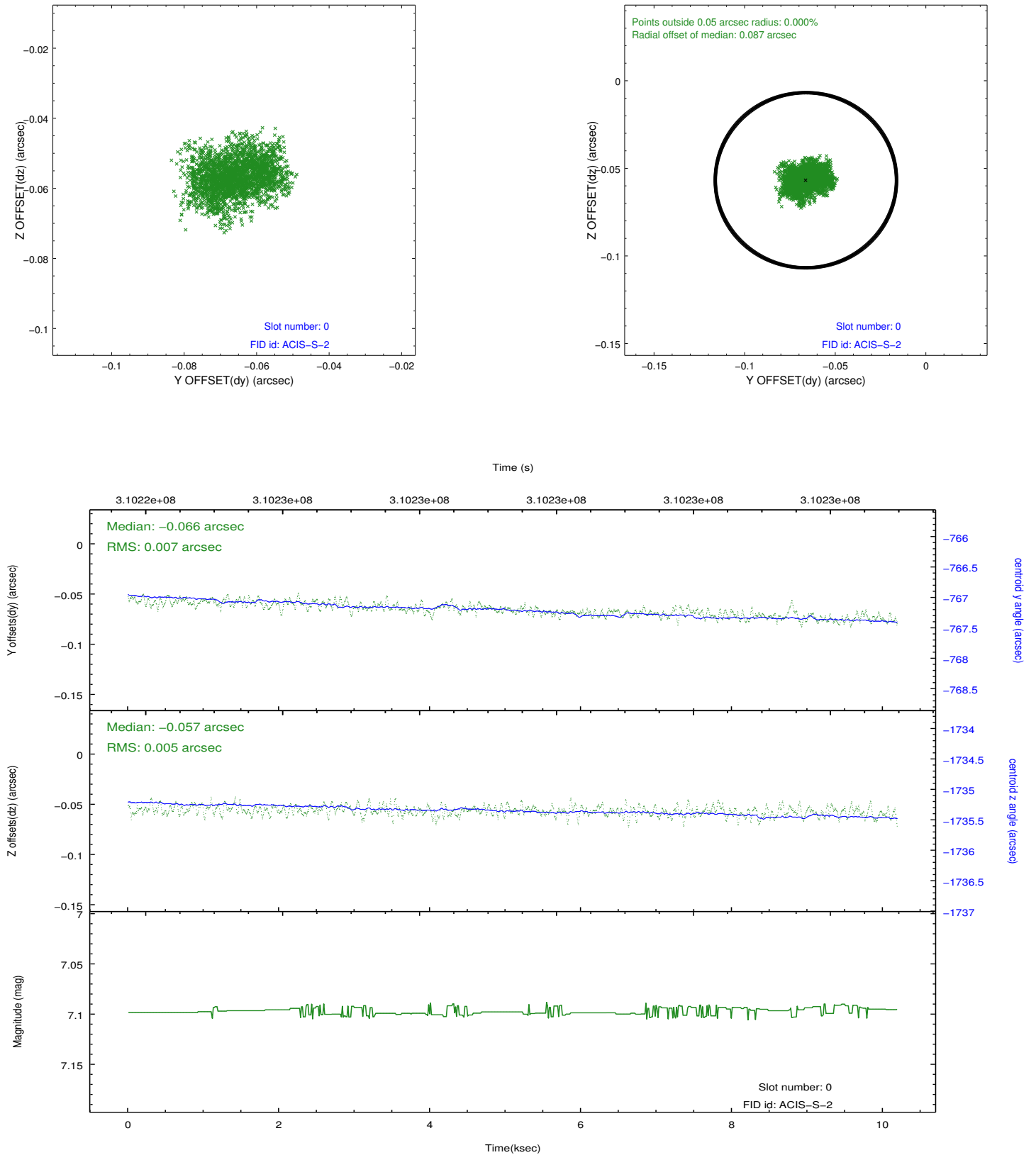


2.4.5 Slot 7

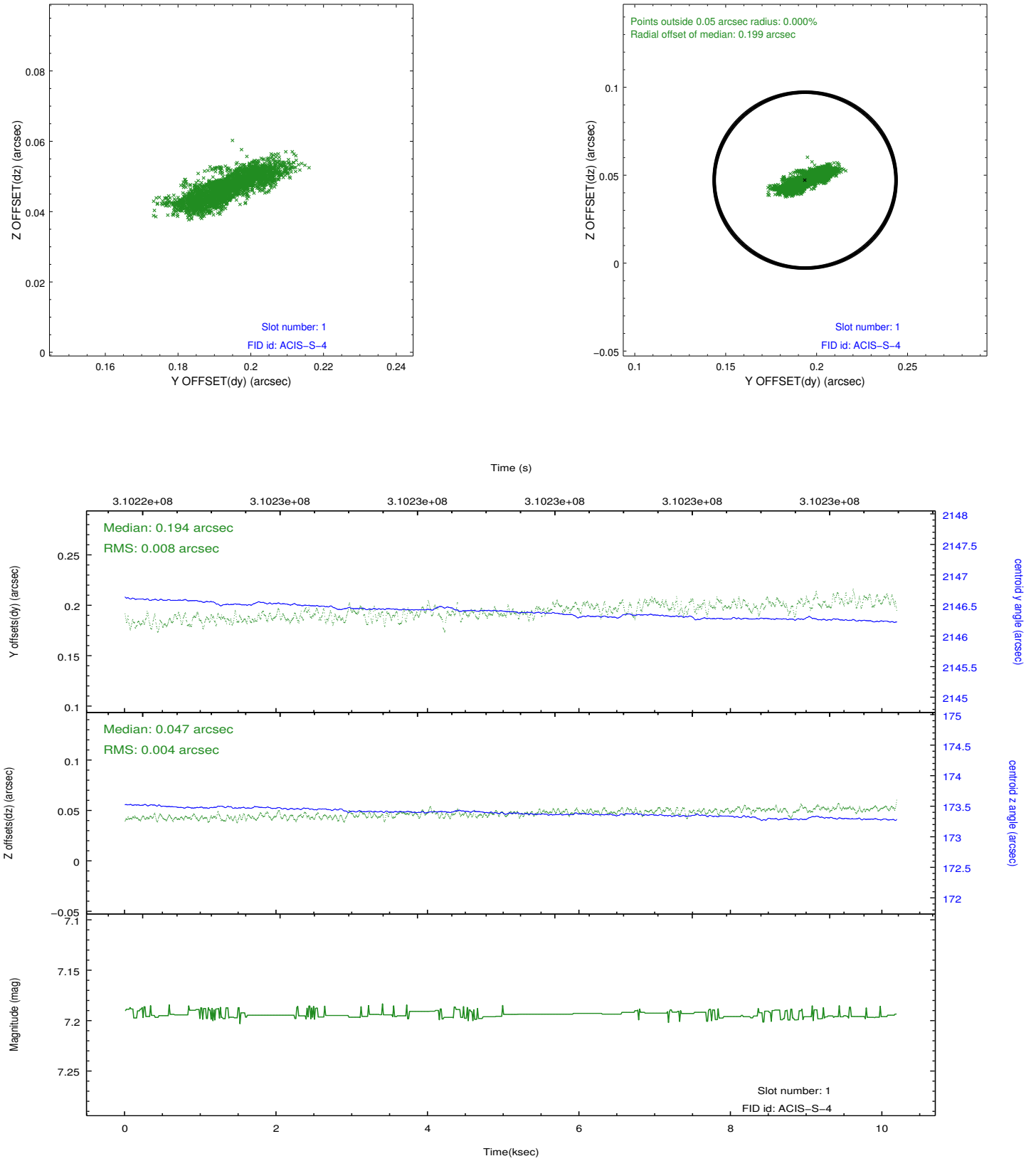


2.5 FID Slots

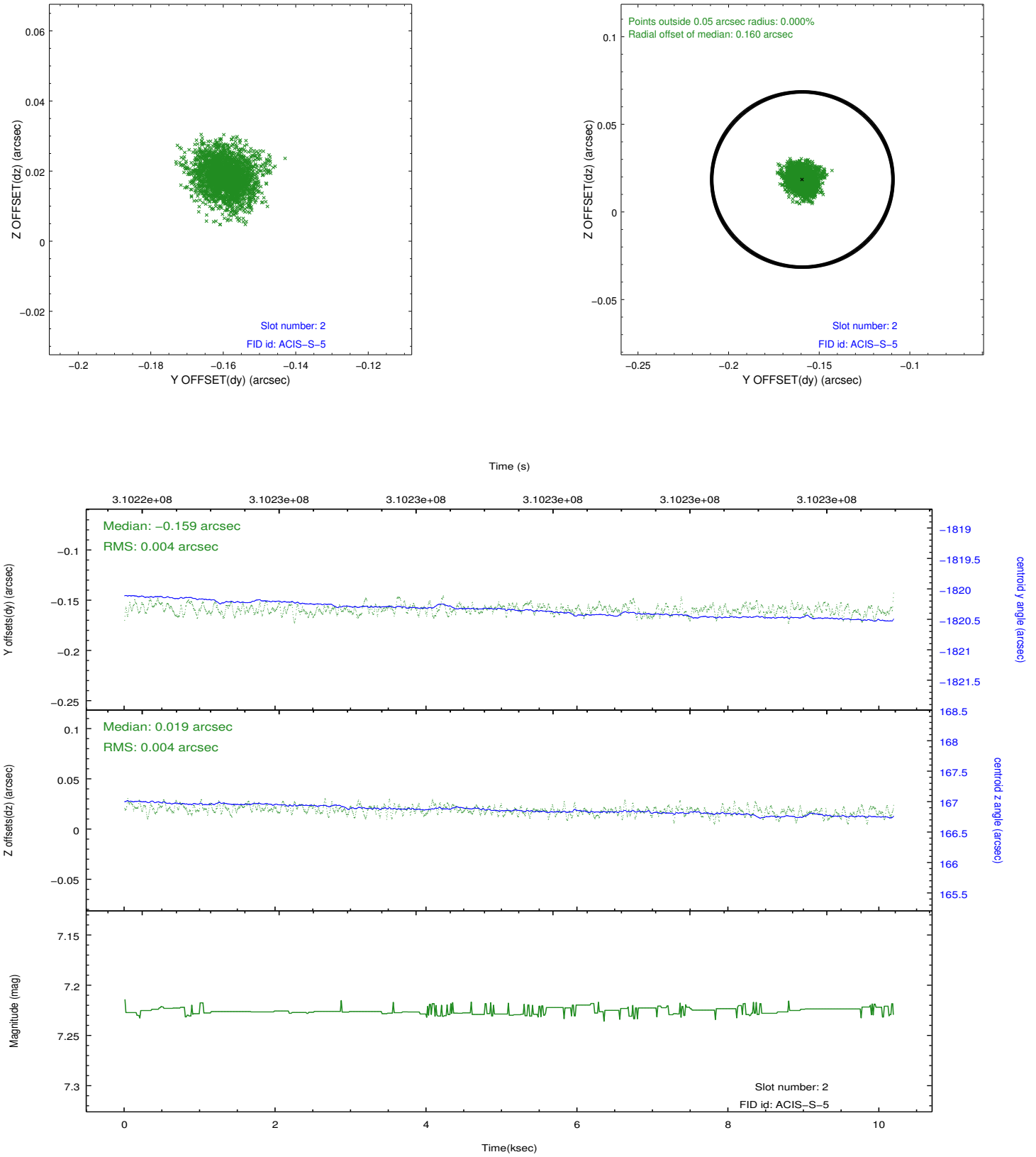
2.5.1 Slot 0



2.5.2 Slot 1



2.5.3 Slot 2



A Summary

A.1 Status

V&V Scientist	Beth Sundheim
V&V Date (YYYY-MM-DD)	2012.05.07
V&V Edition	1
V&V Disposition and Status	OK
V&V Charge Time	10.1887999

A.2 Comments