

V&V Reference Report

L2 ASCDS Version : 8.4.4

Observation 9755 - L2 Version 2
Chandra X-Ray Center

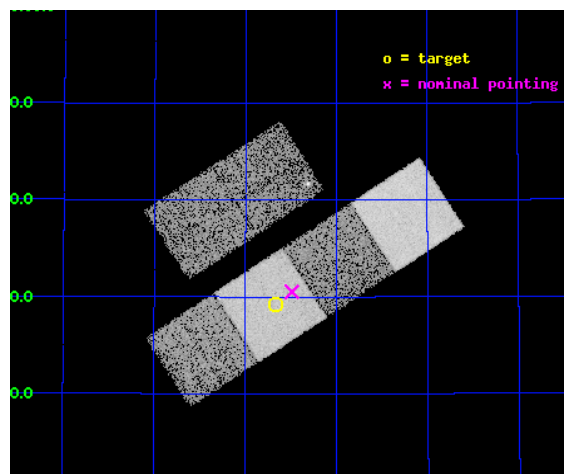
L2 Processing Date : May 3 2012

Contents

1	Front	2
2	OBI	3
2.1	OBI	3
2.1.1	Images	3
2.1.2	Bias	3
2.1.3	Parameters	4
2.1.4	Events	4
2.2	Compared Parameters	5
2.3	Aspect	6
2.4	Star Slots	9
2.4.1	Slot 3	9
2.4.2	Slot 4	10
2.4.3	Slot 5	11
2.4.4	Slot 6	12
2.4.5	Slot 7	13
2.5	FID Slots	14
2.5.1	Slot 0	14
2.5.2	Slot 1	15
2.5.3	Slot 2	16
A	Summary	17
A.1	Status	17
A.2	Comments	17

1 Front

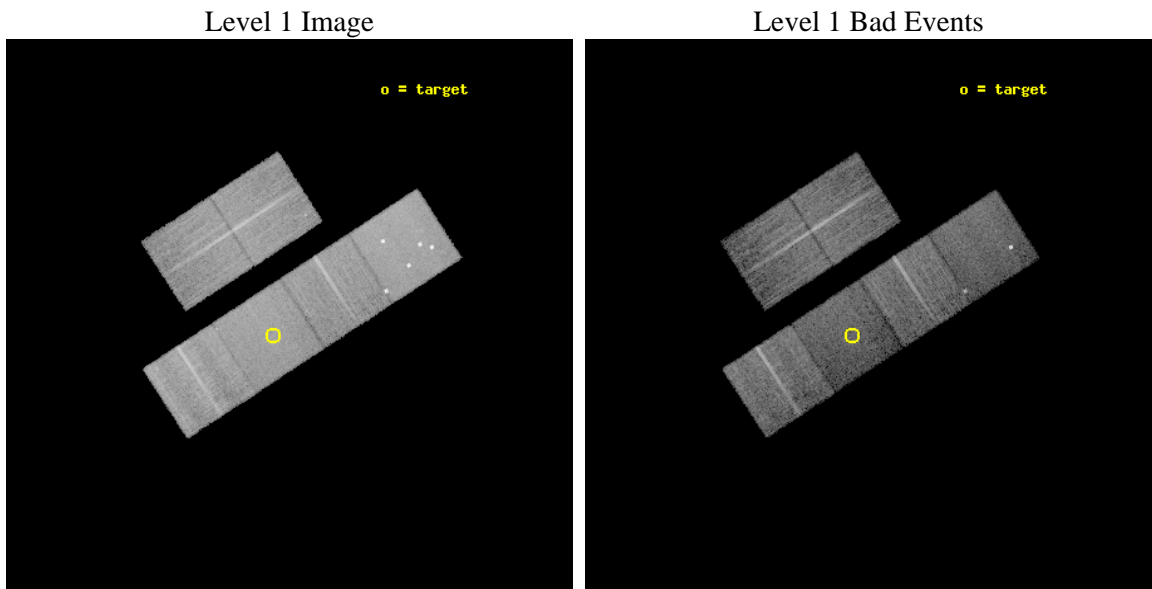
seq_num	100071	Sequence number
obs_id	9755	Observation id
title	Utilizing the exceptional outburst of Comet 17P/Holmes for probing the solar wind at 2.5 AU	Proposal title
observer	Dr. Konrad Dennerl	Principal investigator
object	17P/Holmes	Source name
dtcycle	0	
cycle	P	events from which exps? Prim/Second/Both
ra_targ	56.66693	Observer's specified target RA [deg]
dec_targ	50.48801	Observer's specified target Dec [deg]
ra_nom	56.622521016164	Nominal RA [deg]
dec_nom	50.509011714932	Nominal Dec [deg]
roll_nom	146.97159779259	Nominal Roll [deg]
revision	2	Processing version of data
ontime	10137.599962294	Sum of GTIs [s]
livetime	10009.231567442	Livetime [s]
ontime2	10137.599962294	Sum of GTIs [s]
ontime3	10137.599962294	Sum of GTIs [s]
ontime5	10137.599962294	Sum of GTIs [s]
ontime6	10137.599962294	Sum of GTIs [s]
ontime7	10137.599962294	Sum of GTIs [s]
ontime8	10137.599962294	Sum of GTIs [s]
l2events	121783	Number of level 2 events



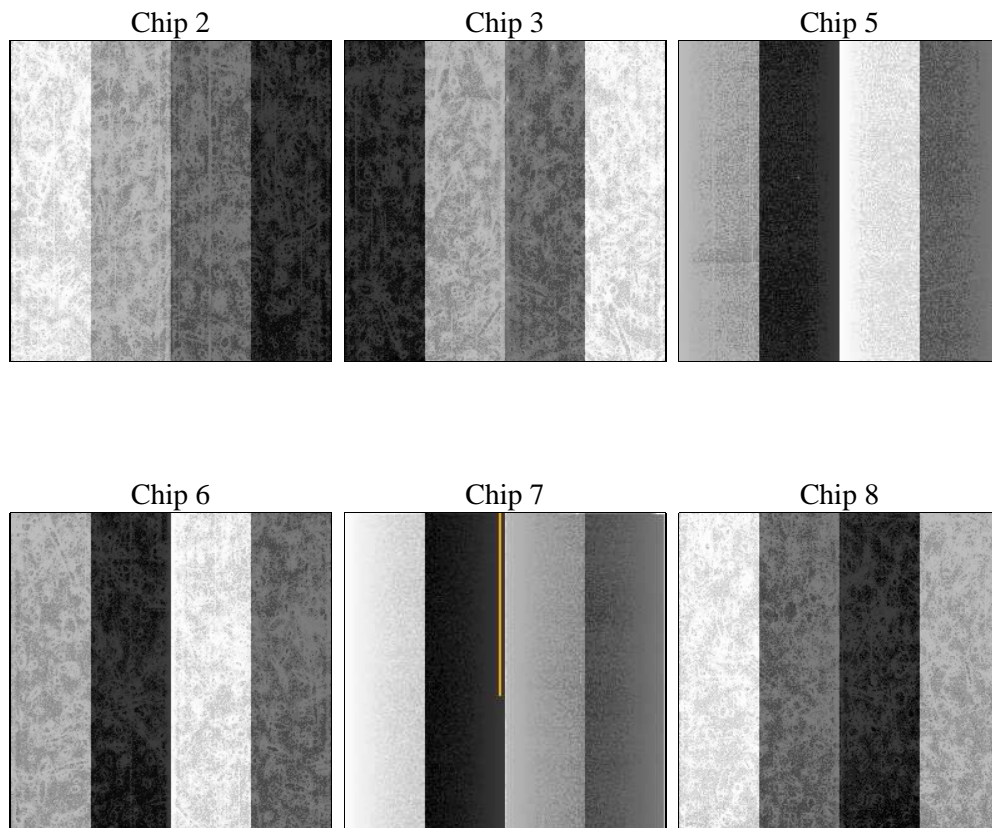
2 OBI

2.1 OBI

2.1.1 Images



2.1.2 Bias



2.1.3 Parameters

obi_num	0	Obi number	sched_exp_time	10000.000000	[s] Scheduled observation exposure time
ascdsver	8.4.4	Processing system revision	ontime	10137.599962294	Sum of GTIs [s]
caldsver	4.4.9	 	ontime2	10137.599962294	Sum of GTIs [s]
date	2012-05-03T15:12:10	Date and time of file creation	ontime3	10137.599962294	Sum of GTIs [s]
revision	2	Processing version of data	ontime5	10137.599962294	Sum of GTIs [s]
			ontime6	10137.599962294	Sum of GTIs [s]
			ontime7	10137.599962294	Sum of GTIs [s]
			ontime8	10137.599962294	Sum of GTIs [s]
			l1events	624636	Number of level 1 events

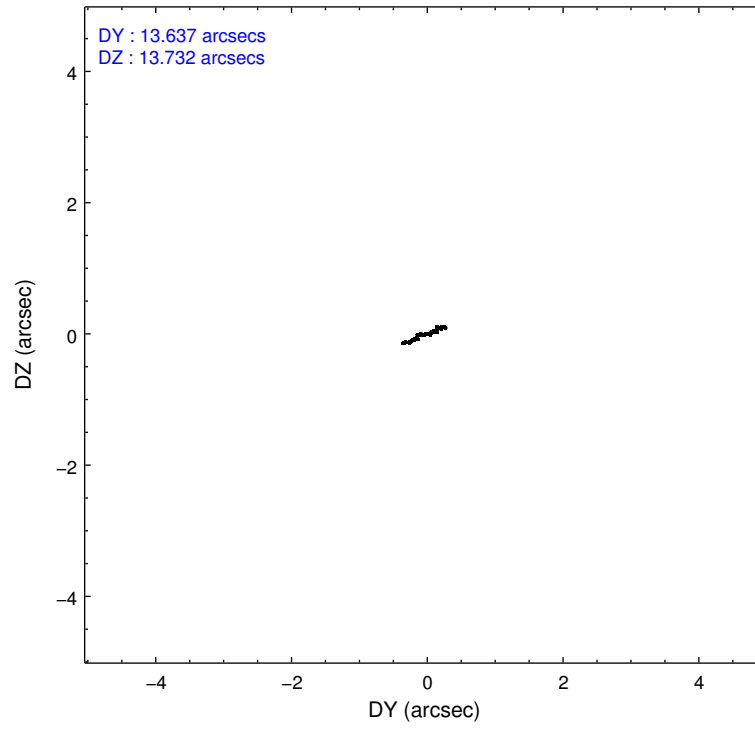
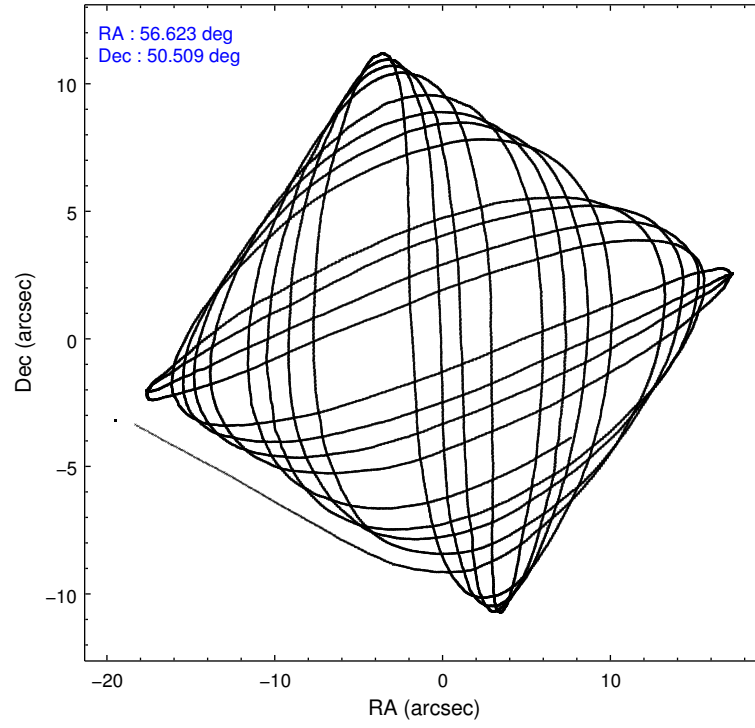
2.1.4 Events

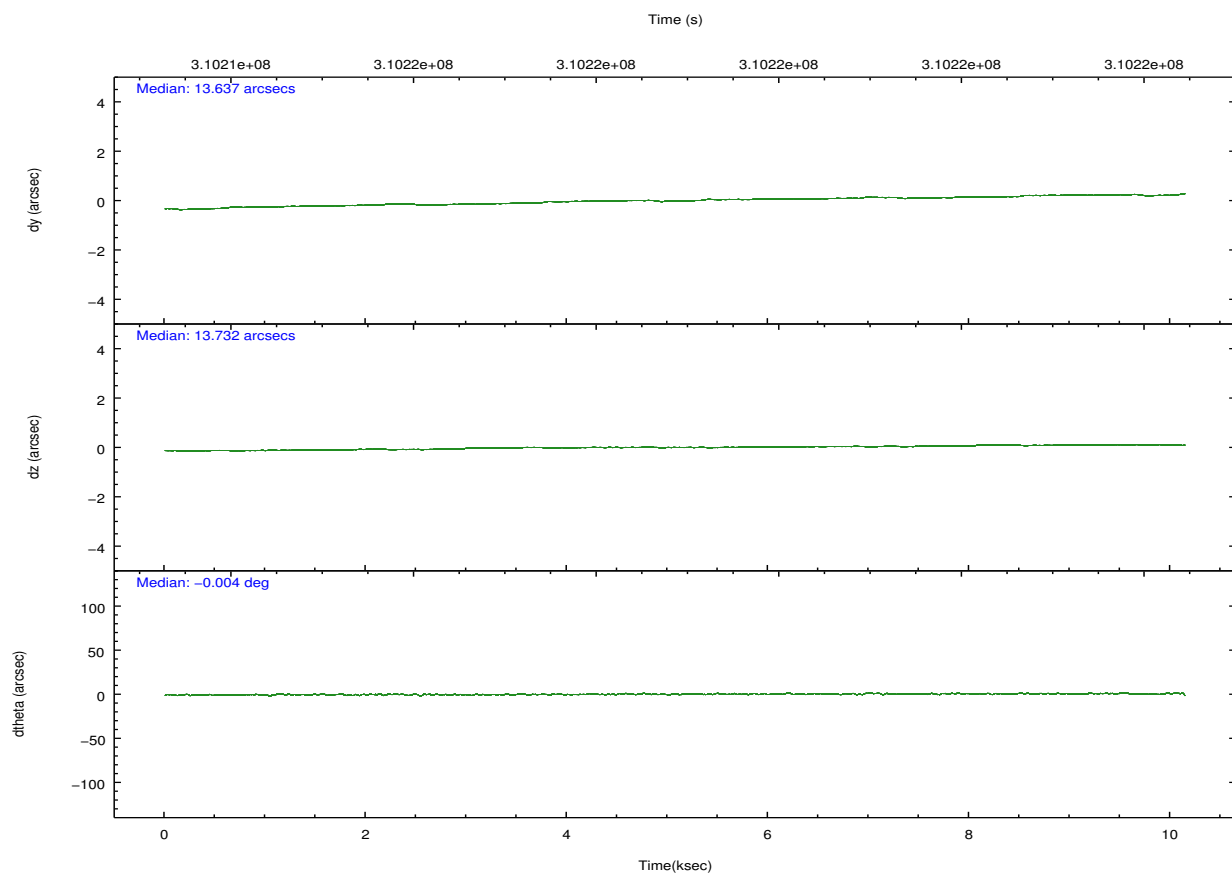
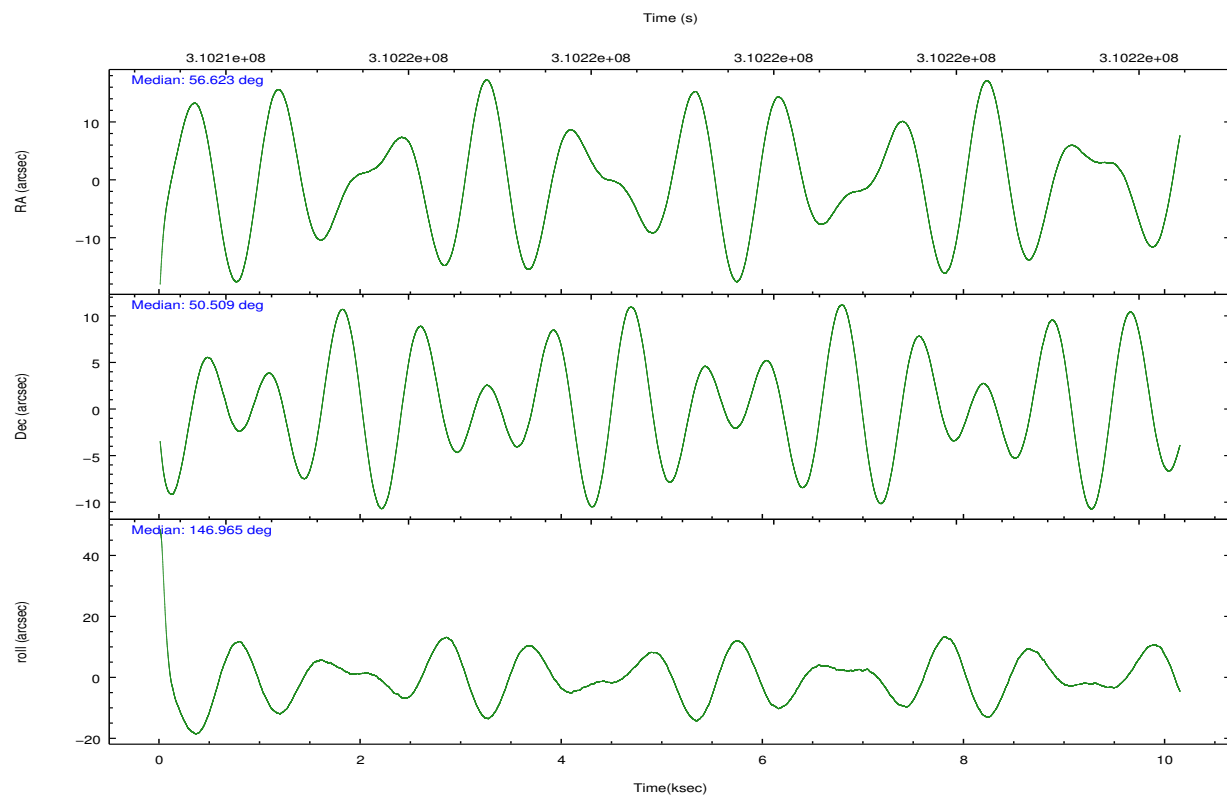
	ccd 2	ccd 3	ccd 5	ccd 6	ccd 7	ccd 8		ccd 2	ccd 3	ccd 5	ccd 6	ccd 7	ccd 8
level 1 events	98082	86843	135121	91023	100317	113250	grade 0 events	3288	2880	12790	3129	4185	7835
rejected events	89968	79322	70845	82724	59049	88606		3%	3%	9%	3%	4%	6%
rejected %	91%	91%	52%	90%	58%	78%	grade 1 events	57	33	388	44	130	83
								0%	0%	0%	0%	0%	0%
							grade 2 events	2091	1820	18960	1992	9051	6299
								2%	2%	14%	2%	9%	5%
							grade 3 events	903	990	2786	955	4170	2855
								0%	1%	2%	1%	4%	2%
							grade 4 events	910	936	2470	1026	4110	2643
								0%	1%	1%	1%	4%	2%
							grade 5 events	3017	3654	10081	3658	10433	5279
								3%	4%	7%	4%	10%	4%
							grade 6 events	1703	1694	33389	2000	23914	7476
								1%	1%	24%	2%	23%	6%
							grade 7 events	86113	74836	54257	78219	44324	80780
								87%	86%	40%	85%	44%	71%

2.2 Compared Parameters

Parameter	Planned	Actual	Parameter	Planned	Actual
Instrument	ACIS	ACIS	Obspar format version number	7	7
Detector	ACIS-235678	ACIS-235678	Obspar file type	PREDICTED	ACTUAL
Grating	NONE	NONE	Obspar update status	NONE	UPDATED
Data mode	VFAINT	VFAINT	CCD I0 on	N	N
Observation mode	POINTING	POINTING	CCD I1 on	N	N
[deg] Pointing RA	56.665515	56.62252101616383	CCD I2 on	Y	Y
[deg] Pointing Dec	50.507992	50.50901171493188	CCD I3 on	Y	Y
[deg] Pointing Roll	146.781734	146.9715977925879	CCD S0 on	N	N
[mm] SIM focus pos	-0.684267	-0.6828225247311905	CCD S1 on	Y	Y
[mm] SIM defocus	0	0.001444936568705701	CCD S2 on	Y	Y
[mm] SIM translation stage pos	-190.132523	-190.1425803651734	CCD S3 on	Y	Y
[mm] SIM translation stage offset	0	0.01005778216563158	CCD S4 on	O1	Y
[s] Observation start time (MET)	310213944.184000	310212444.08329	CCD S5 on	N	N
Observation start date	2007-10-31T10:31:19	2007-10-31T10:07:24	Number of optional ACIS chips dropped	0	0
[s] Observation end time (MET)	310223944.184000	310224078.34635	On-chip summing requested	N	N
Observation end date	2007-10-31T13:17:59	2007-10-31T13:21:18	Subarray requested	NONE	NONE
Read mode	TIMED	TIMED	Alternating exposures requested	N	N
			[s] Primary exposure time	0.000000	3.2

2.3 Aspect



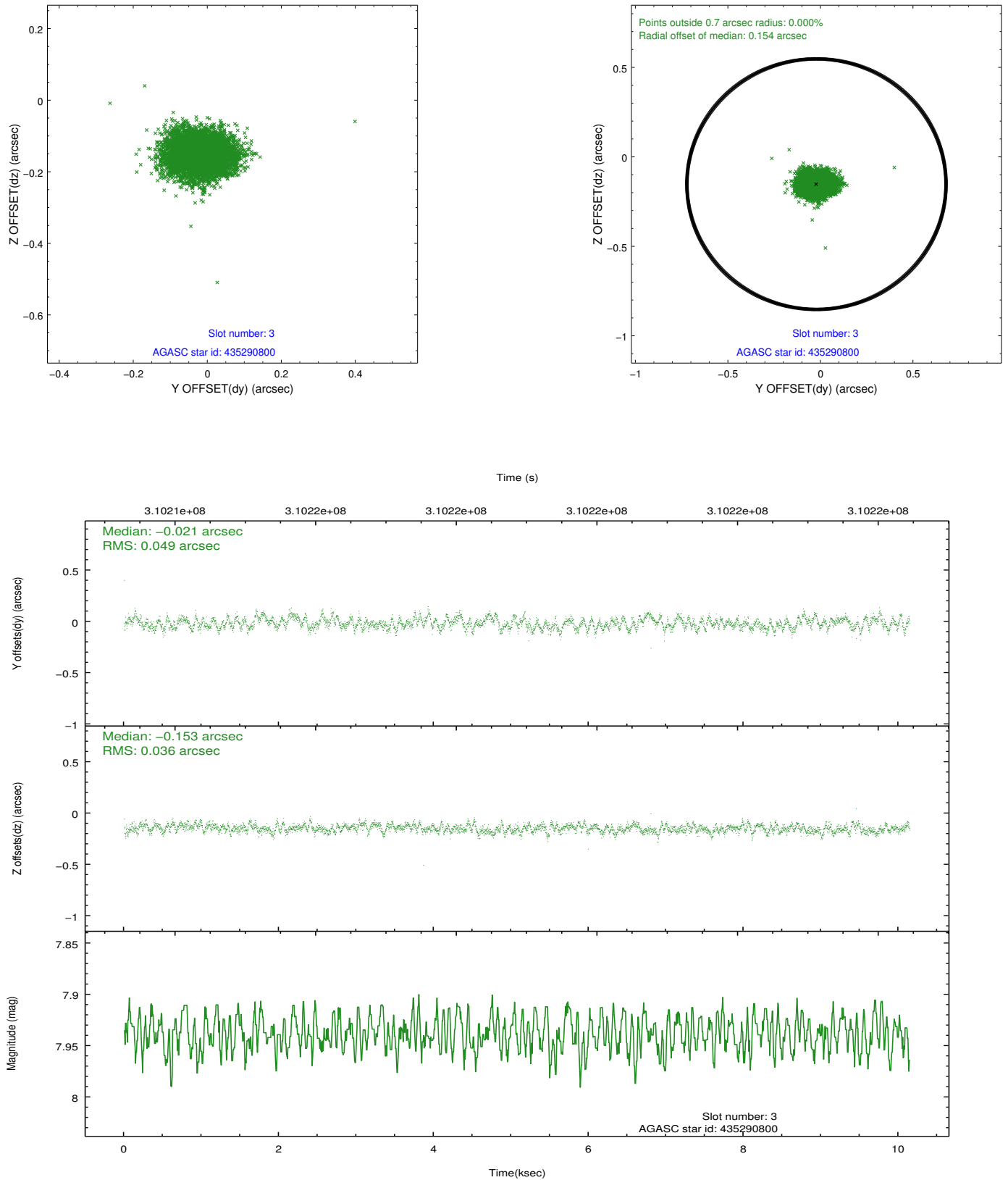


Slot Statistics

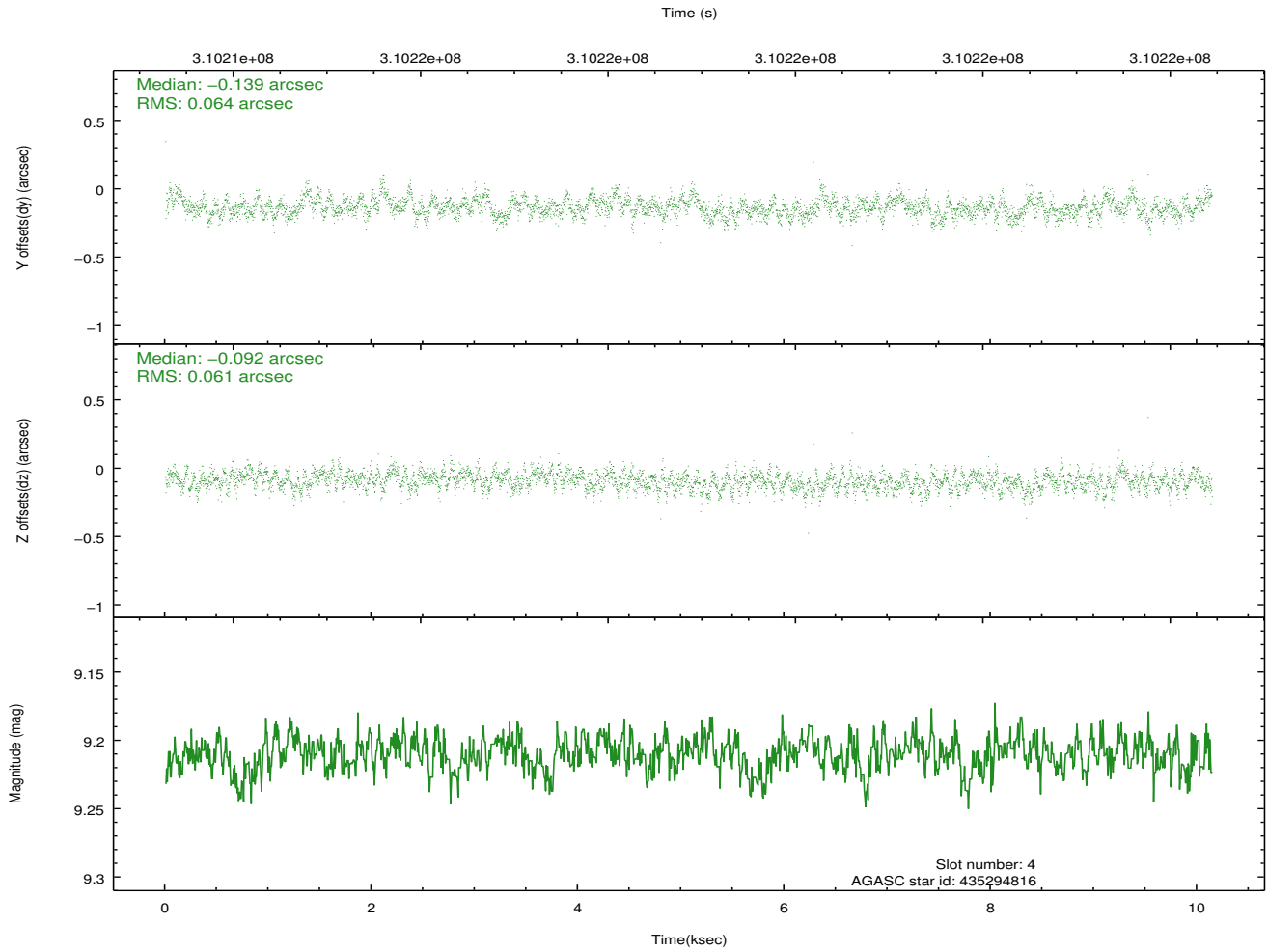
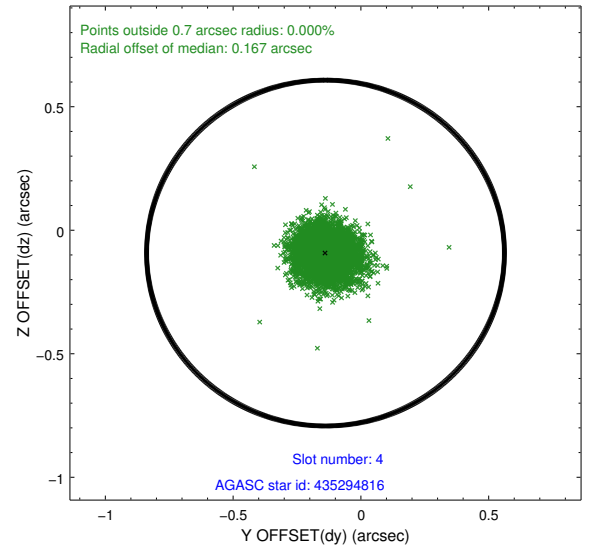
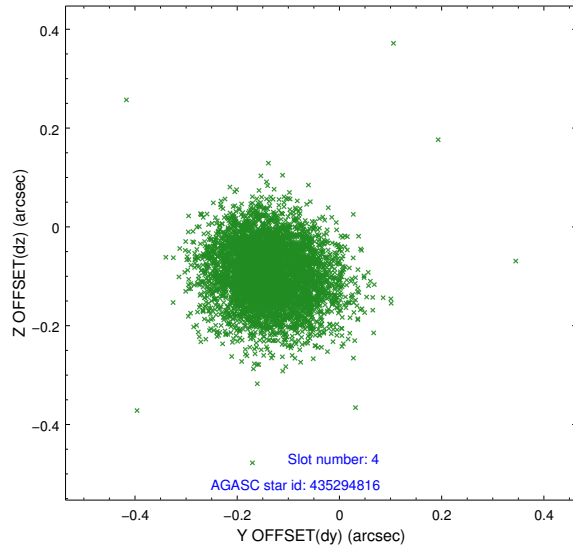
slot	status	id	mag	n_pts	med_dy	med_dz	dr1	dr2	ra	dec	mean_y	mean_z
0	FID	ACIS-S-2	7.10	2474	-0.098	-0.062	0.008	0.015	0.000000	0.000000	-766.67	-1735.07
1	FID	ACIS-S-4	7.19	2474	0.111	0.050	0.009	0.014	0.000000	0.000000	2146.60	172.95
2	FID	ACIS-S-6	7.33	2474	-0.040	0.019	0.010	0.016	0.000000	0.000000	396.06	810.93
3	GUIDE	435290800	7.94	4948	-0.021	-0.153	0.064	0.102	56.171214	50.542921	1016.99	511.17
4	GUIDE	435294816	9.21	4943	-0.139	-0.092	0.094	0.150	55.731774	50.186096	1173.36	2137.30
5	GUIDE	436994544	9.65	4928	0.159	0.081	0.140	0.239	57.831829	50.520725	-2195.93	-1517.87
6	GUIDE	437529824	6.58	4948	0.127	0.055	0.077	0.116	57.075305	50.736763	-328.43	-1203.01
7	GUIDE	437519928	6.61	4947	-0.124	0.114	0.086	0.126	57.162279	50.844930	-277.86	-1636.79

2.4 Star Slots

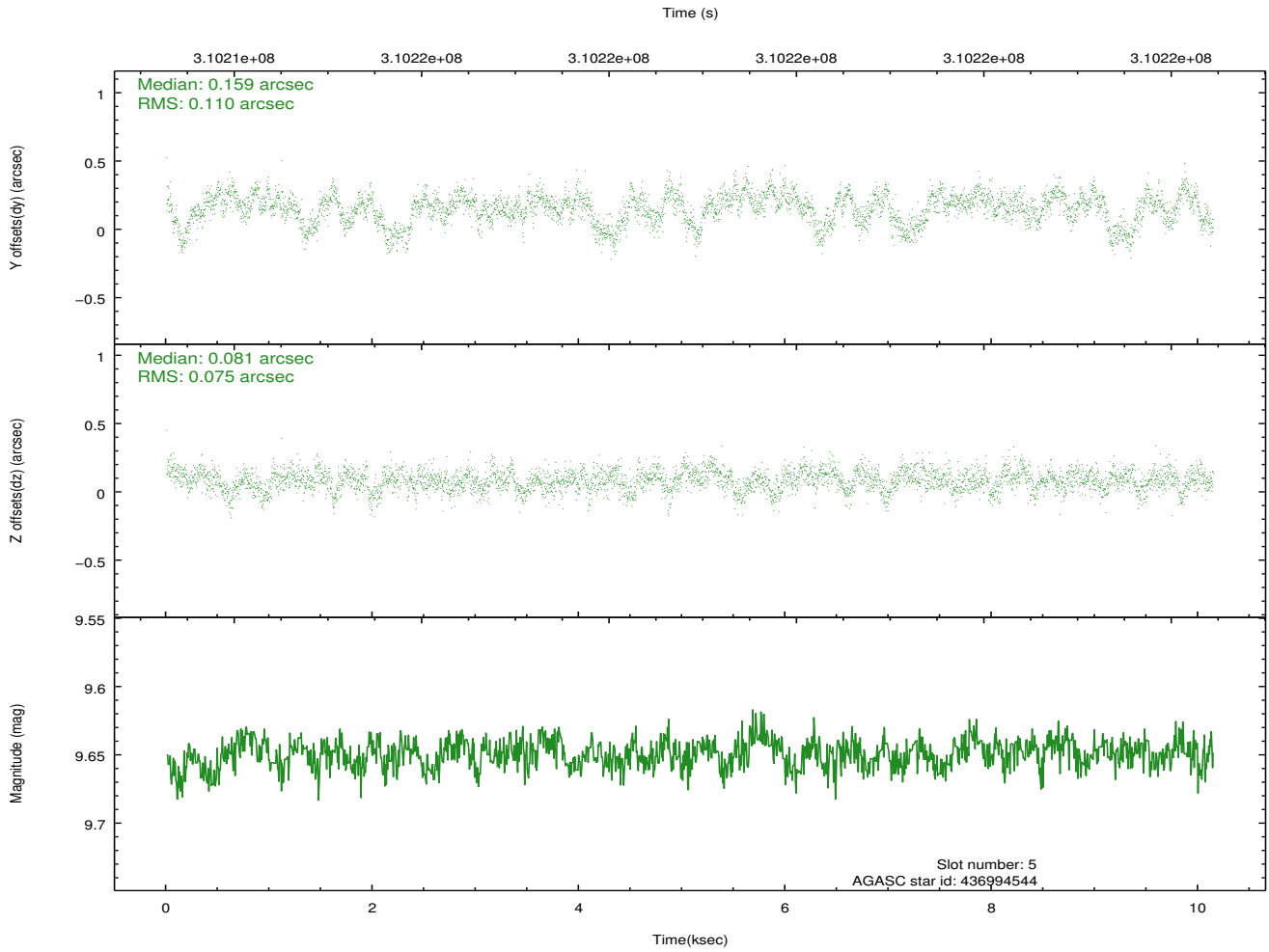
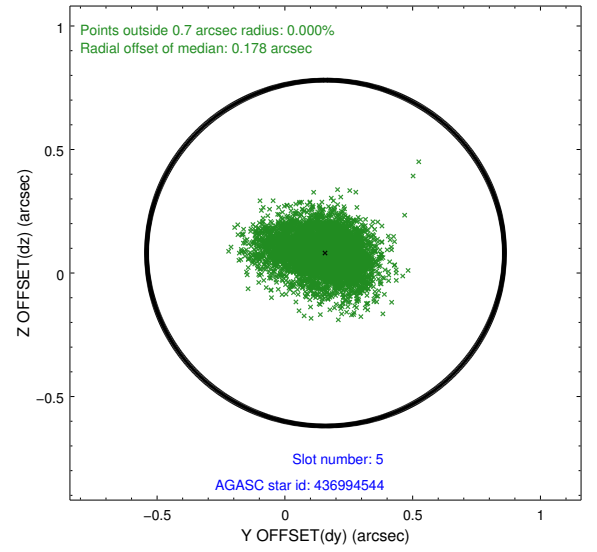
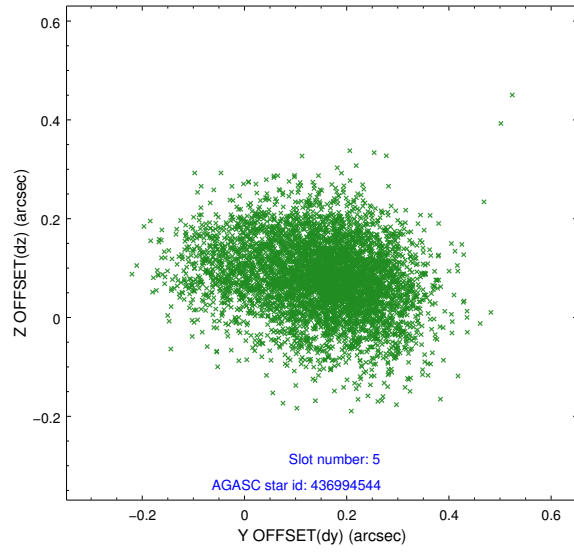
2.4.1 Slot 3



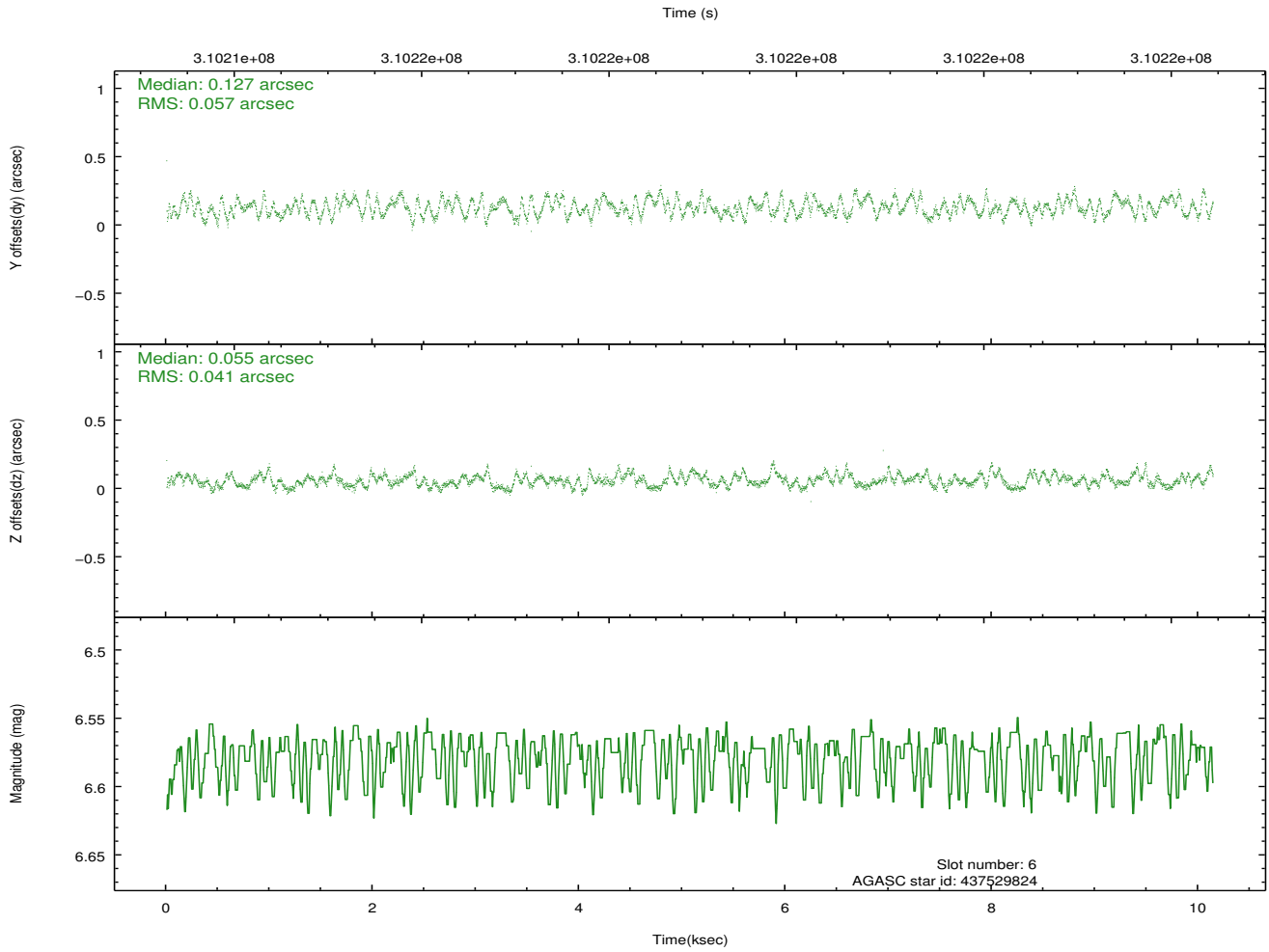
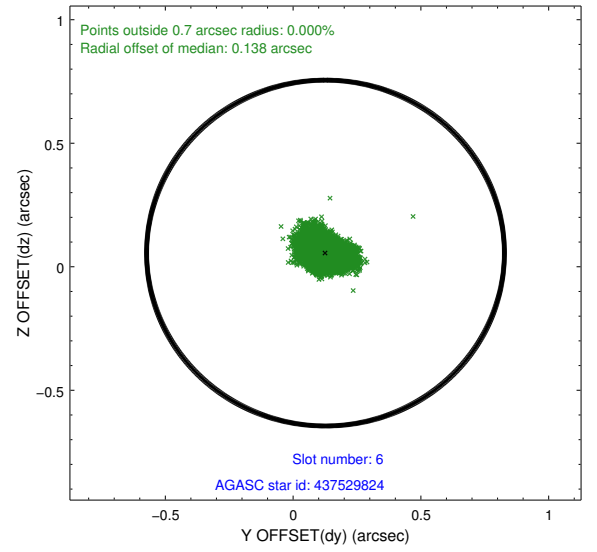
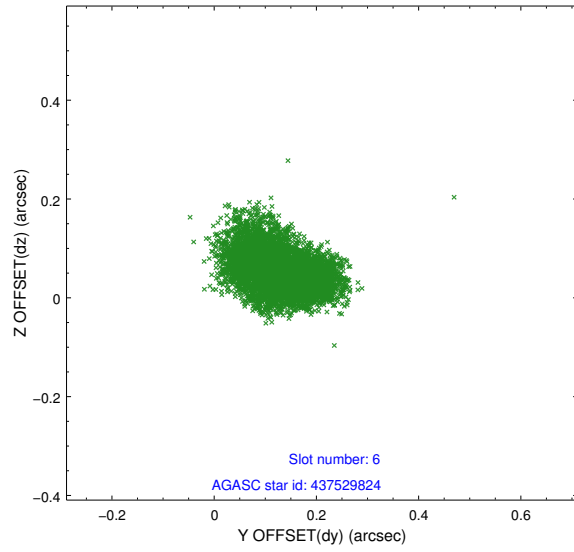
2.4.2 Slot 4



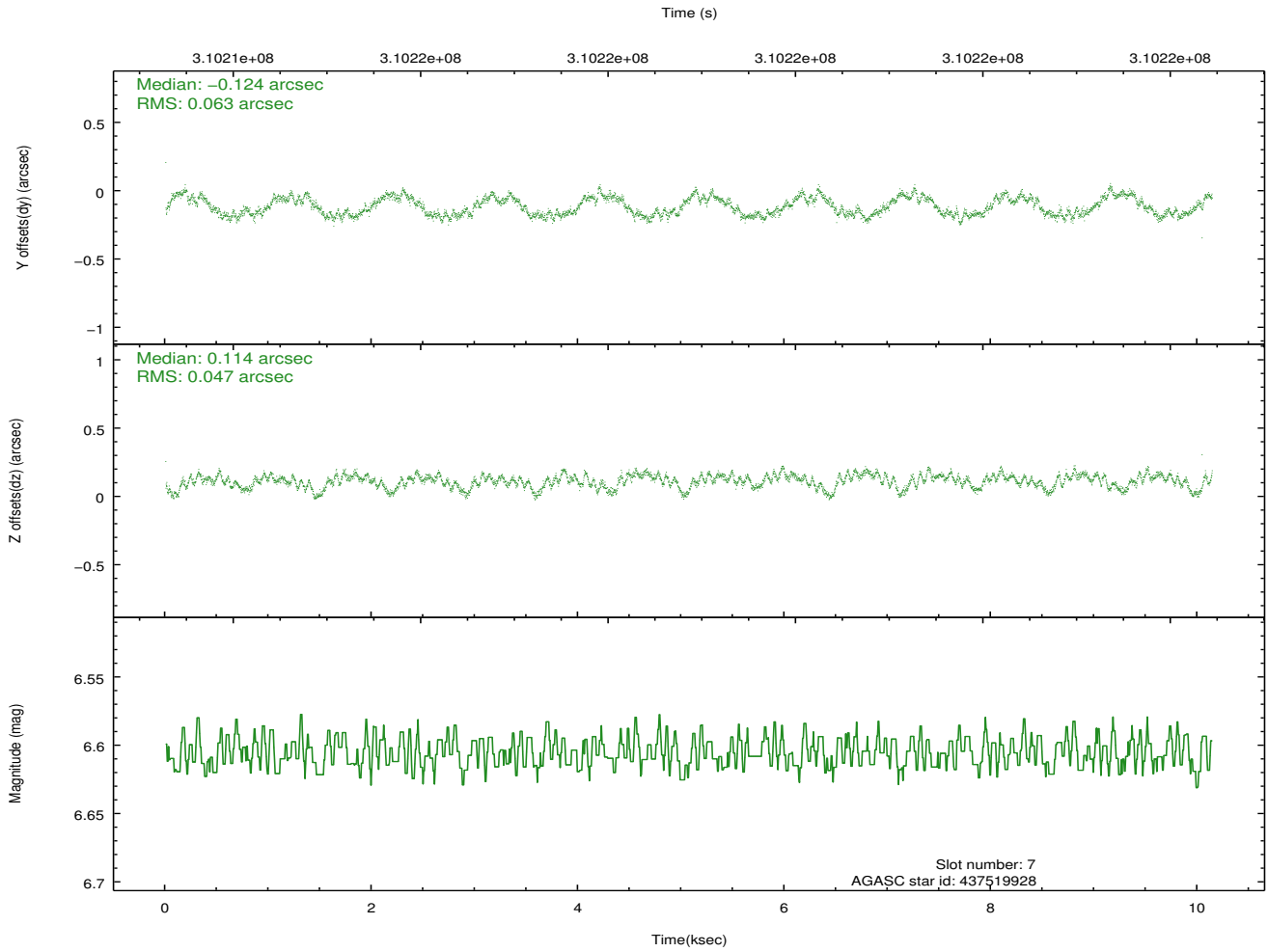
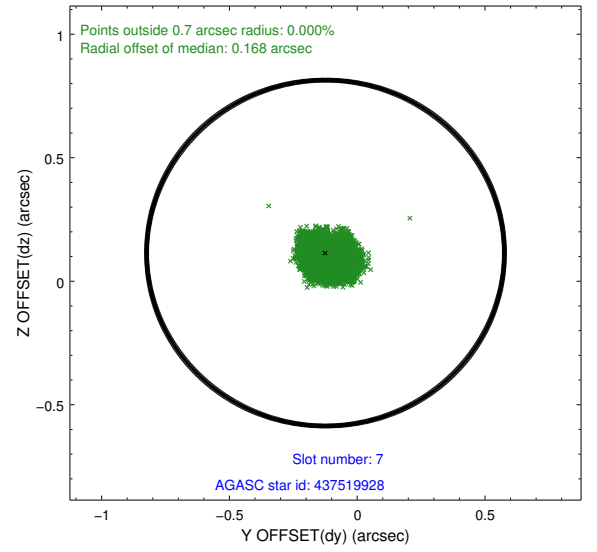
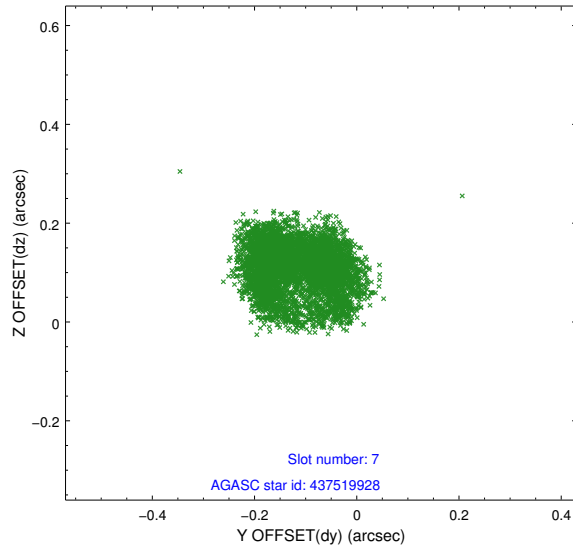
2.4.3 Slot 5



2.4.4 Slot 6

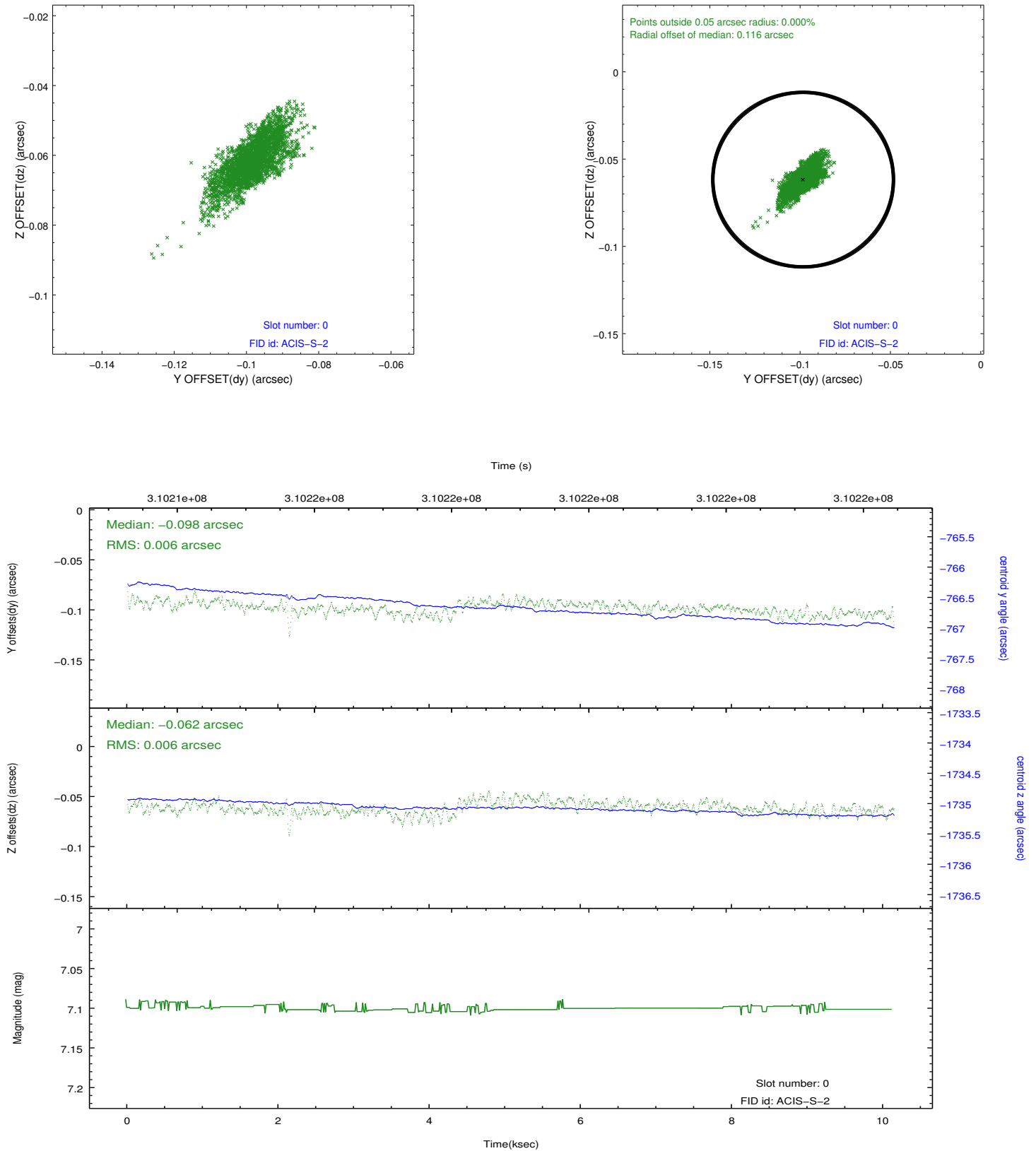


2.4.5 Slot 7

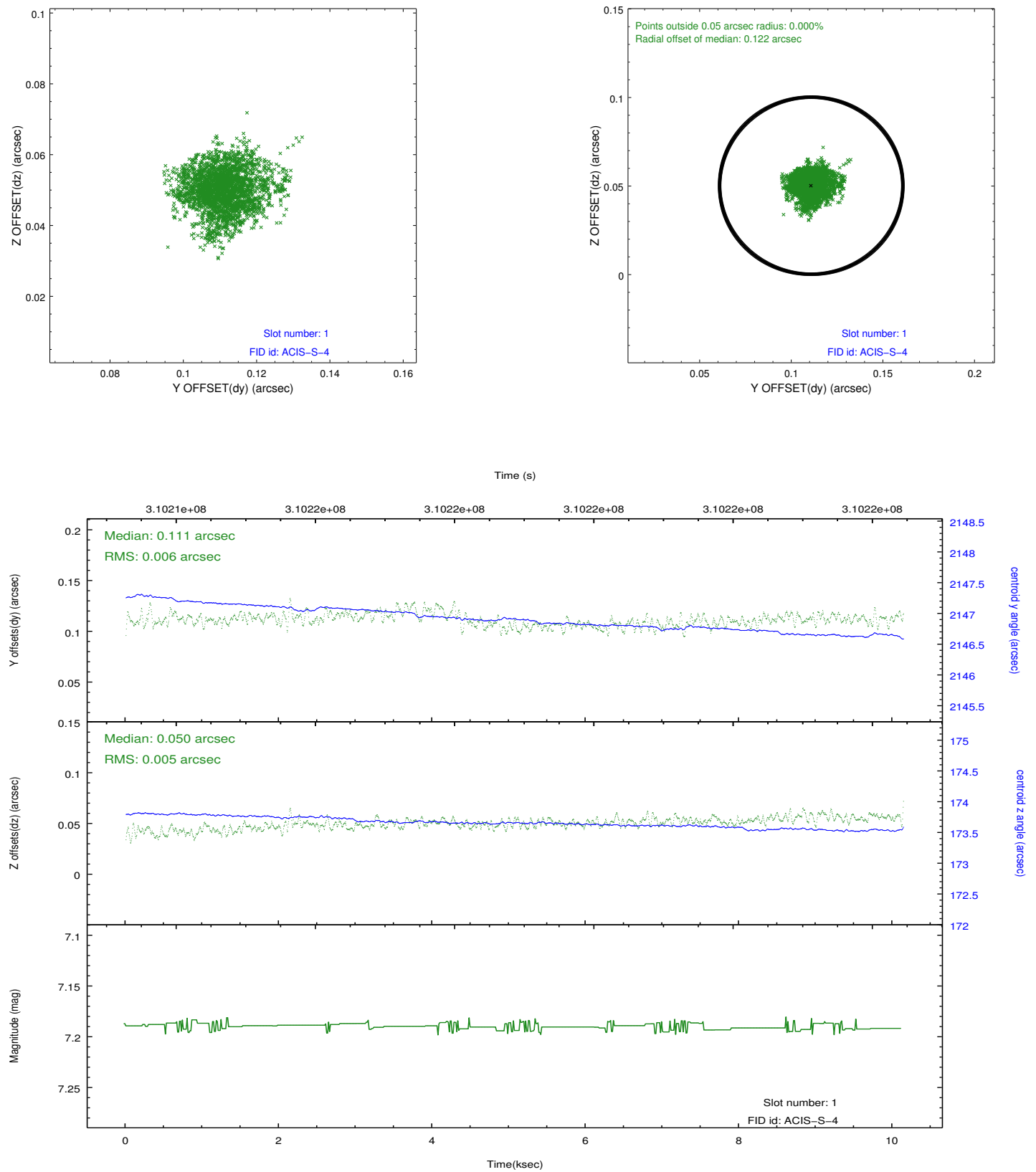


2.5 FID Slots

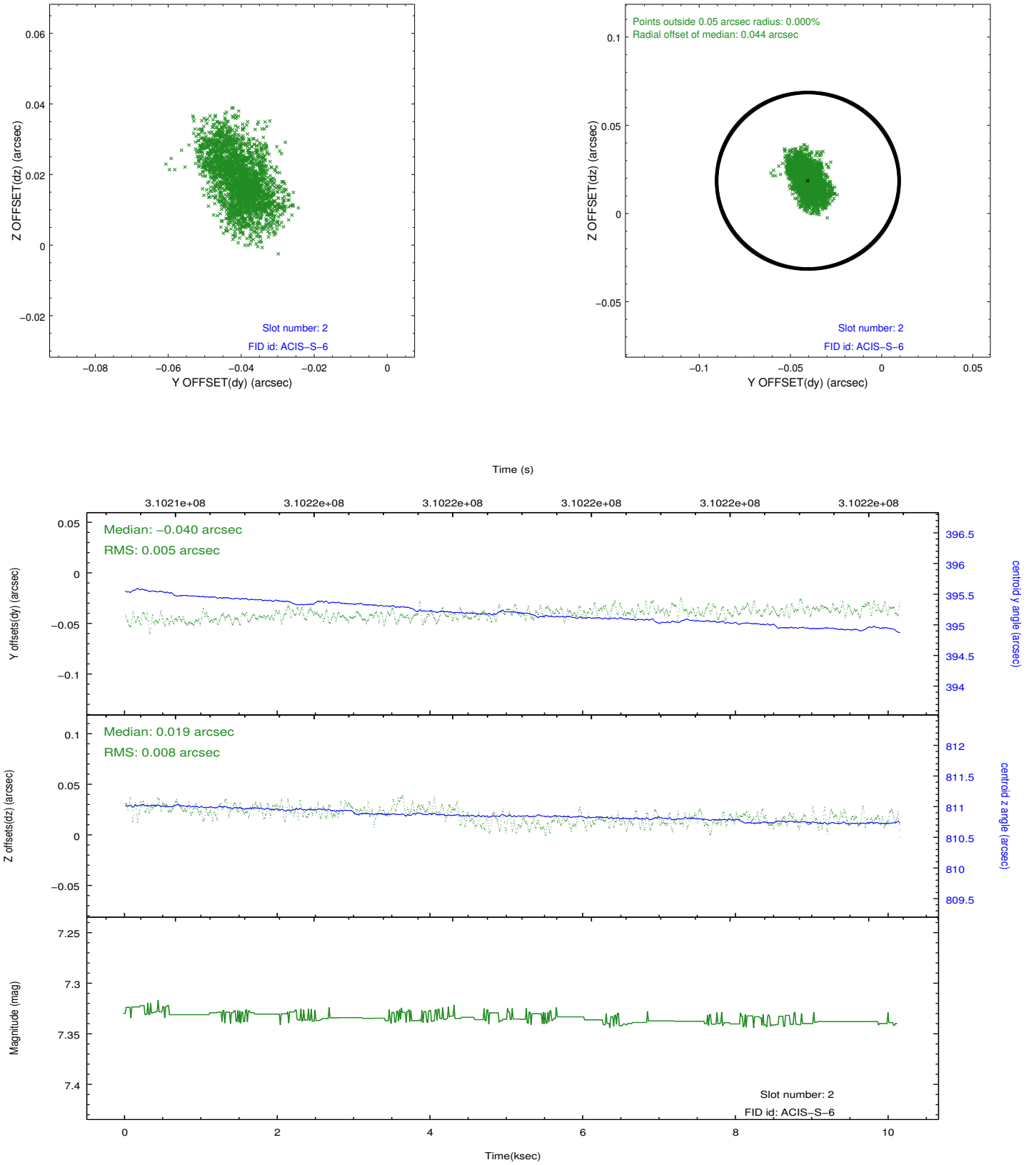
2.5.1 Slot 0



2.5.2 Slot 1



2.5.3 Slot 2



A Summary

A.1 Status

V&V Scientist	Beth Sundheim
V&V Date (YYYY-MM-DD)	2012.05.07
V&V Edition	1
V&V Disposition and Status	OK
V&V Charge Time	10.1375999

A.2 Comments