

V&V Reference Report

L2 ASCDS Version : 8.4.3.1

Observation 7375 - L2 Version 2
Chandra X-Ray Center

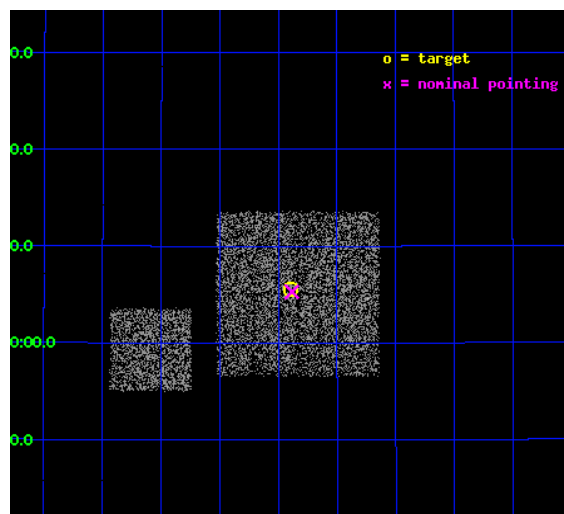
L2 Processing Date : Apr 7 2012

Contents

1	Front	2
2	OBI	3
2.1	OBI	3
2.1.1	Images	3
2.1.2	Bias	3
2.1.3	Parameters	4
2.1.4	Events	4
2.2	Compared Parameters	5
2.3	Aspect	6
2.4	Star Slots	9
2.4.1	Slot 3	9
2.4.2	Slot 4	10
2.4.3	Slot 5	11
2.4.4	Slot 6	12
2.4.5	Slot 7	13
2.5	FID Slots	14
2.5.1	Slot 0	14
2.5.2	Slot 1	15
2.5.3	Slot 2	16
A	Summary	17
A.1	Status	17
A.2	Comments	17

1 Front

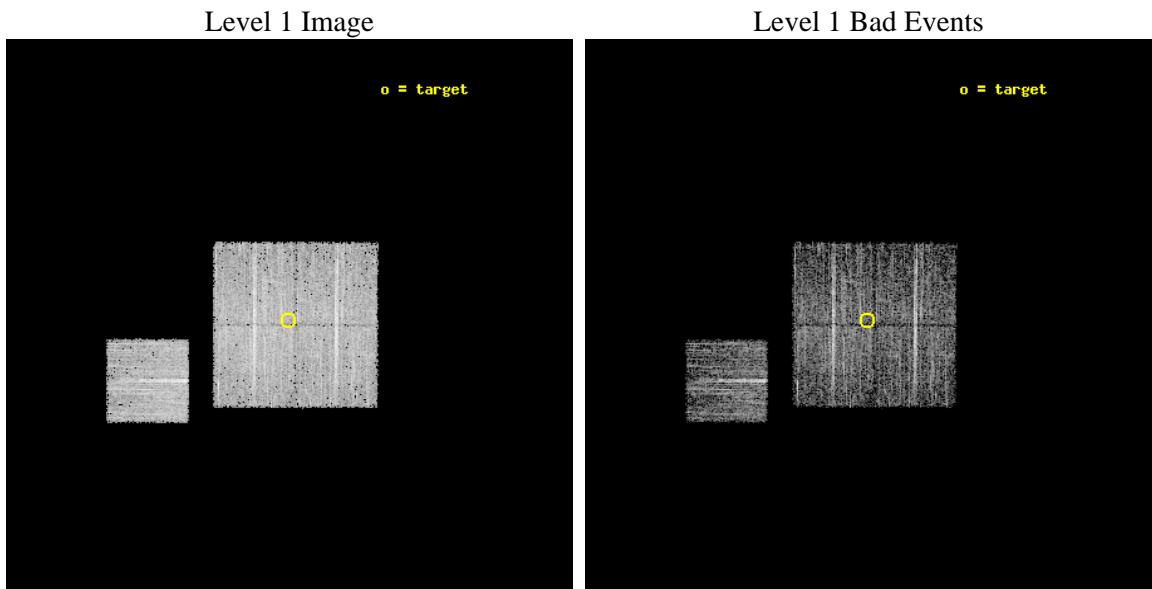
seq_num	900472	Sequence number
obs_id	7375	Observation id
title	Chandra Large Scale Survey of the NOAO Bootes Deep Field (A)	Propo
observer	Dr Stephen Murray	Principal investigator
object	Bootes2 12	Source name
dtcycle	0	
cycle	P	events from which exps? Prim/Second/Both
ra_targ	219.09826	Observer's specified target RA [deg]
dec_targ	35.092549	Observer's specified target Dec [deg]
ra_nom	219.09608112909	Nominal RA [deg]
dec_nom	35.088162872422	Nominal Dec [deg]
roll_nom	270.20996242924	Nominal Roll [deg]
revision	2	Processing version of data
ontime	4476.4000344276	Sum of GTIs [s]
livetime	4417.9125725001	Livetime [s]
ontime0	4476.4000344276	Sum of GTIs [s]
ontime1	4476.4000344276	Sum of GTIs [s]
ontime2	4476.4000344276	Sum of GTIs [s]
ontime3	4476.4000344276	Sum of GTIs [s]
ontime6	4476.4000344276	Sum of GTIs [s]
l2events	12807	Number of level 2 events



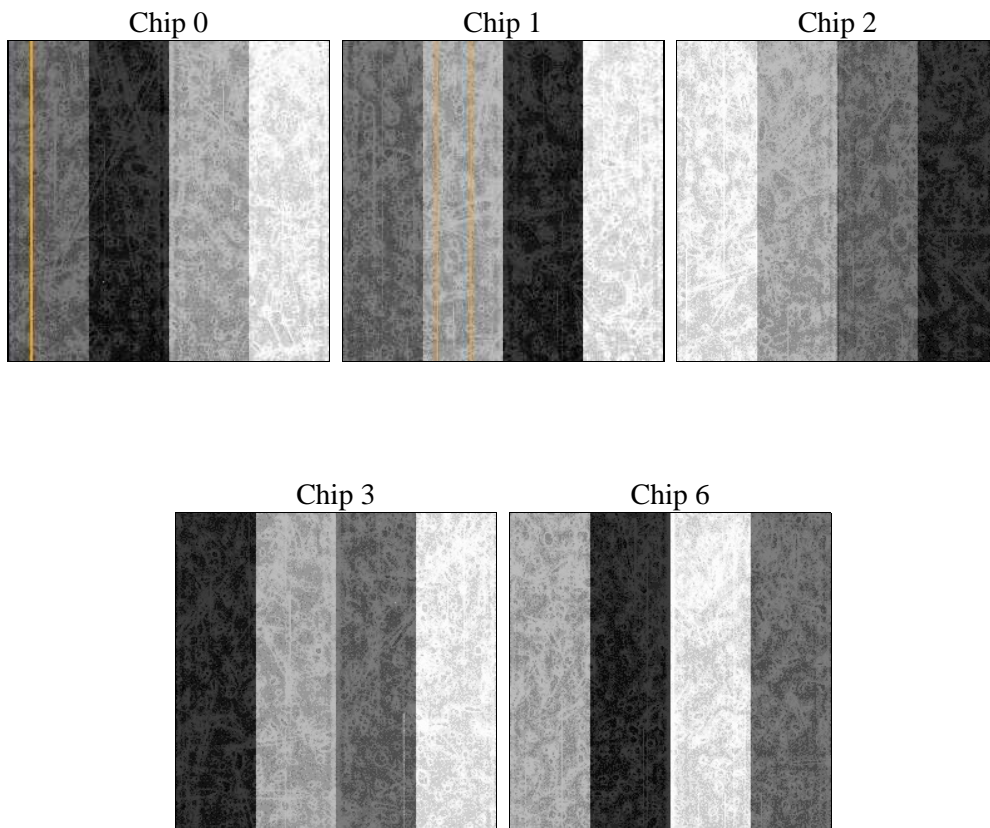
2 OBI

2.1 OBI

2.1.1 Images



2.1.2 Bias



2.1.3 Parameters

obi_num	0	Obi number	sched_exp_time	4700.000000	[s] Scheduled observation exposure time
ascdsver	8.4.3.1	Processing system revision	ontime	4476.4000344276	Sum of GTIs [s]
caldsver	4.4.9	 	ontime0	4476.4000344276	Sum of GTIs [s]
date	2012-04-07T09:30:10	Date and time of file creation	ontime1	4476.4000344276	Sum of GTIs [s]
revision	2	Processing version of data	ontime2	4476.4000344276	Sum of GTIs [s]
			ontime3	4476.4000344276	Sum of GTIs [s]
			ontime6	4476.4000344276	Sum of GTIs [s]
			l1events	160550	Number of level 1 events

2.1.4 Events

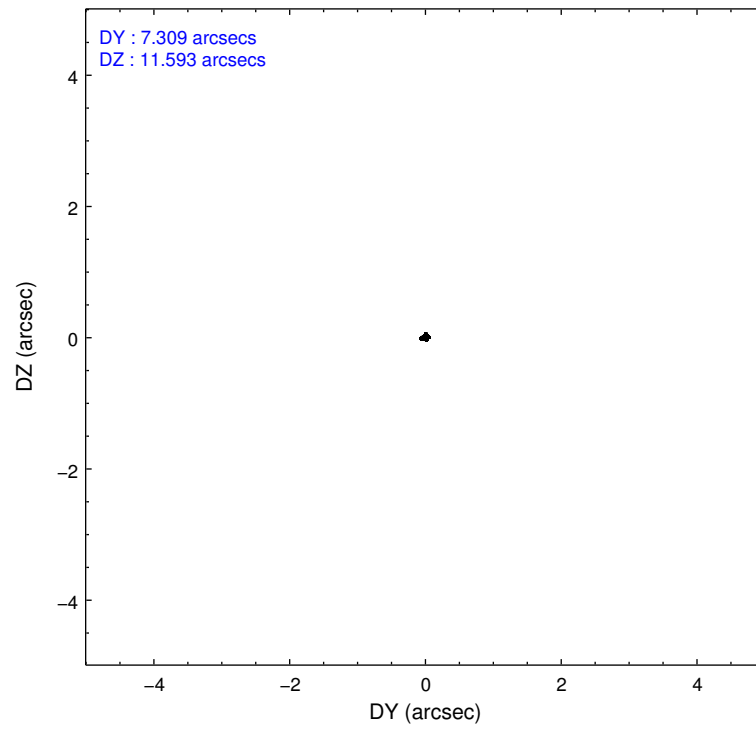
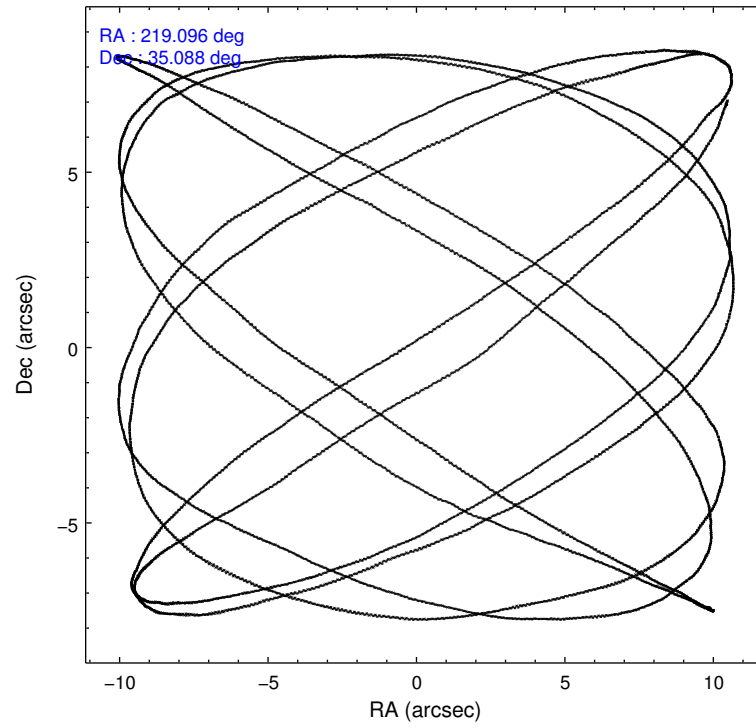
	ccd 0	ccd 1	ccd 2	ccd 3	ccd 6
level 1 events	30713	29938	34173	31559	34167
rejected events	27517	26579	31151	28632	30918
rejected %	89%	88%	91%	90%	90%

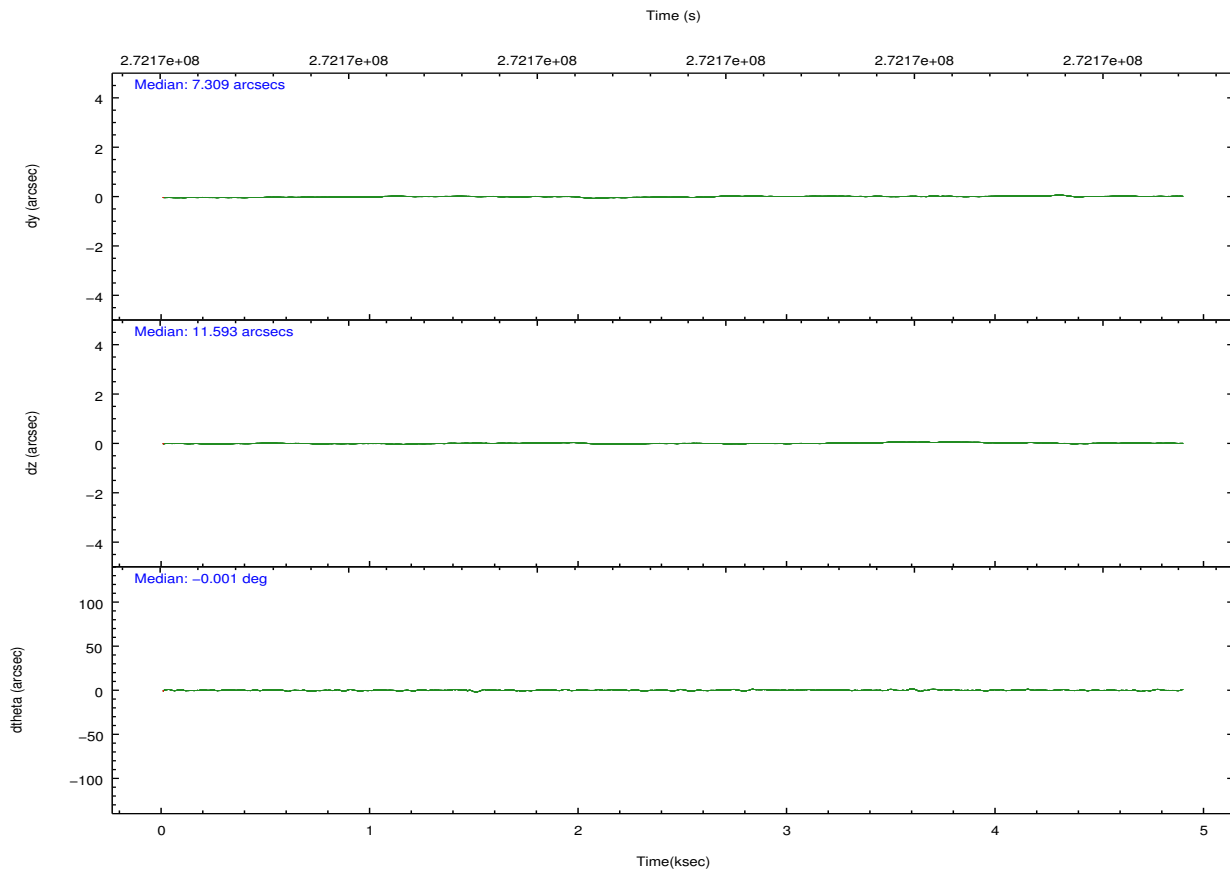
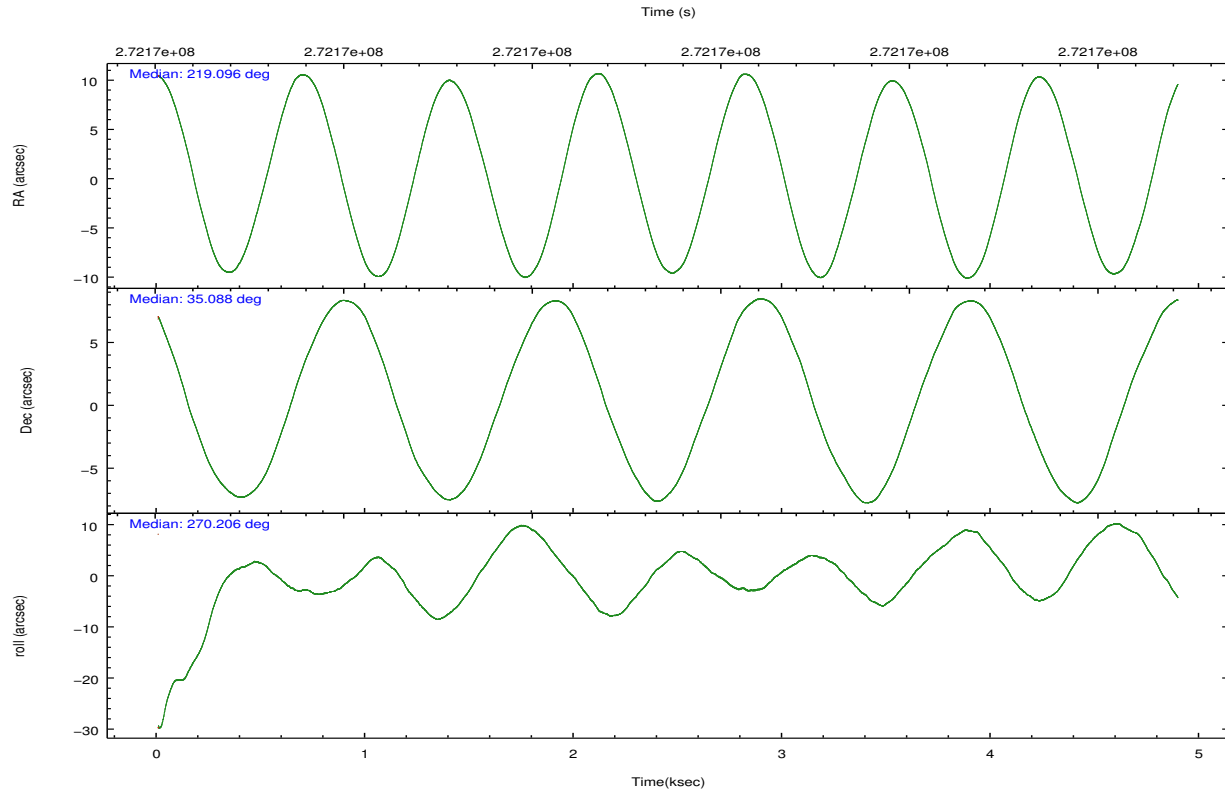
	ccd 0	ccd 1	ccd 2	ccd 3	ccd 6
grade 0 events	1162	1138	1069	1085	1172
	3%	3%	3%	3%	3%
grade 1 events	13	21	14	16	11
	0%	0%	0%	0%	0%
grade 2 events	799	750	758	604	711
	2%	2%	2%	1%	2%
grade 3 events	372	393	333	326	364
	1%	1%	0%	1%	1%
grade 4 events	326	356	382	321	358
	1%	1%	1%	1%	1%
grade 5 events	934	1021	871	1132	1013
	3%	3%	2%	3%	2%
grade 6 events	542	723	481	591	645
	1%	2%	1%	1%	1%
grade 7 events	26565	25536	30265	27484	29893
	86%	85%	88%	87%	87%

2.2 Compared Parameters

Parameter	Planned	Actual	Parameter	Planned	Actual
Instrument	ACIS	ACIS	Obspar format version number	7	7
Detector	ACIS-01236	ACIS-01236	Obspar file type	PREDICTED	ACTUAL
Grating	NONE	NONE	Obspar update status	NONE	UPDATED
Data mode	VFAINT	VFAINT	Number of optional ACIS chips dropped	0	0
Observation mode	POINTING	POINTING	On-chip summing requested	N	N
[deg] Pointing RA	219.079144	219.0960811290941	Subarray requested	NONE	NONE
[deg] Pointing Dec	35.111835	35.088162872422	Alternating exposures requested	N	N
[deg] Pointing Roll	270.011024	270.2099624292438	[s] Primary exposure time	0.000000	3.1
[mm] SIM focus pos	-0.782348	-0.7809083437167272			
[mm] SIM defocus	0	0.001439871863259334			
[mm] SIM translation stage pos	-233.592463	-233.5874344608287			
[mm] SIM translation stage offset	0	-0.005018542100998502			
[s] Observation start time (MET)	272166474.184000	272166041.27216			
Observation start date	2006-08-17T01:46:49	2006-08-17T01:40:41			
[s] Observation end time (MET)	272171174.184000	272172141.55995			
Observation end date	2006-08-17T03:05:09	2006-08-17T03:22:21			
Read mode	TIMED	TIMED			

2.3 Aspect



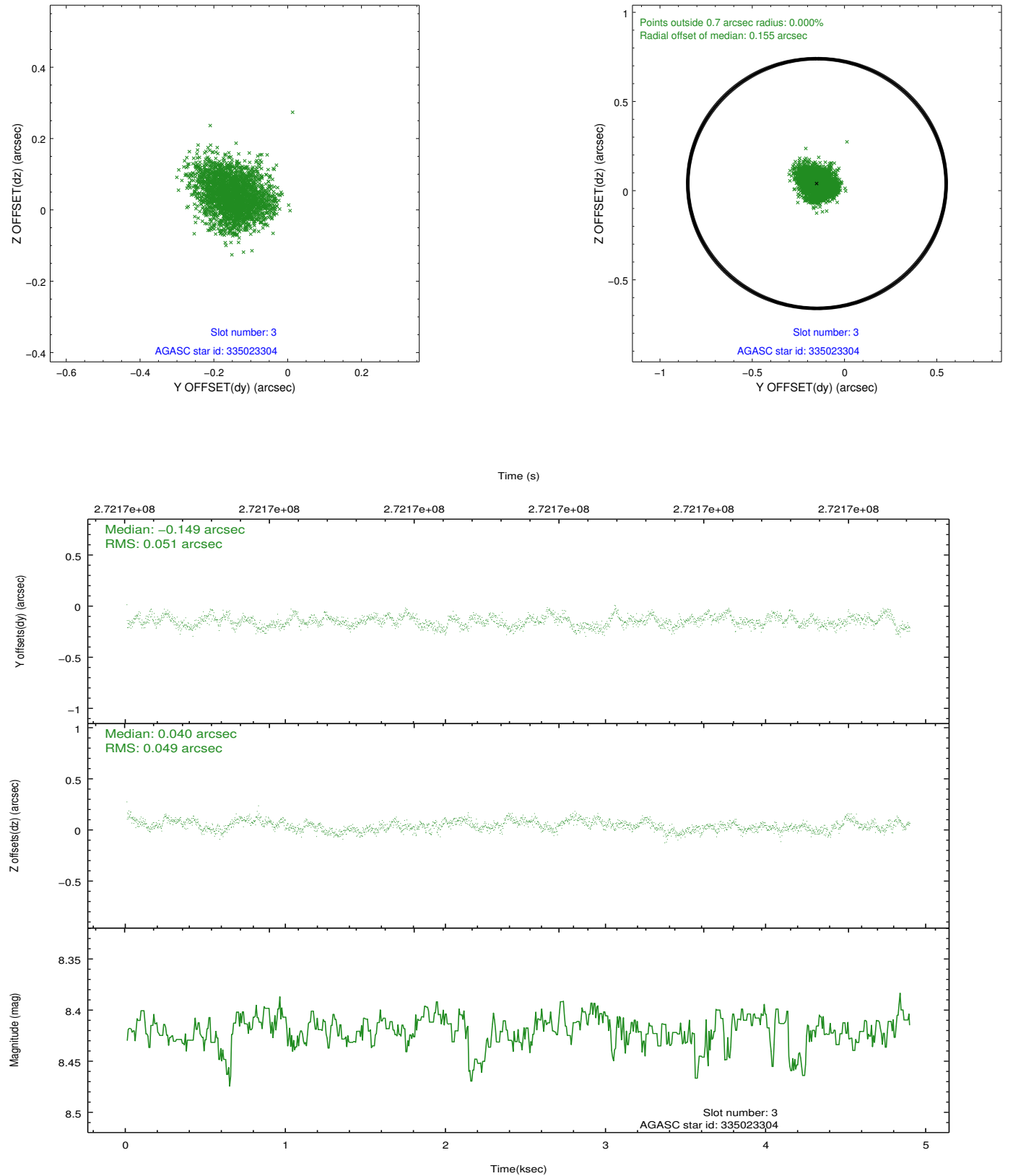


Slot Statistics

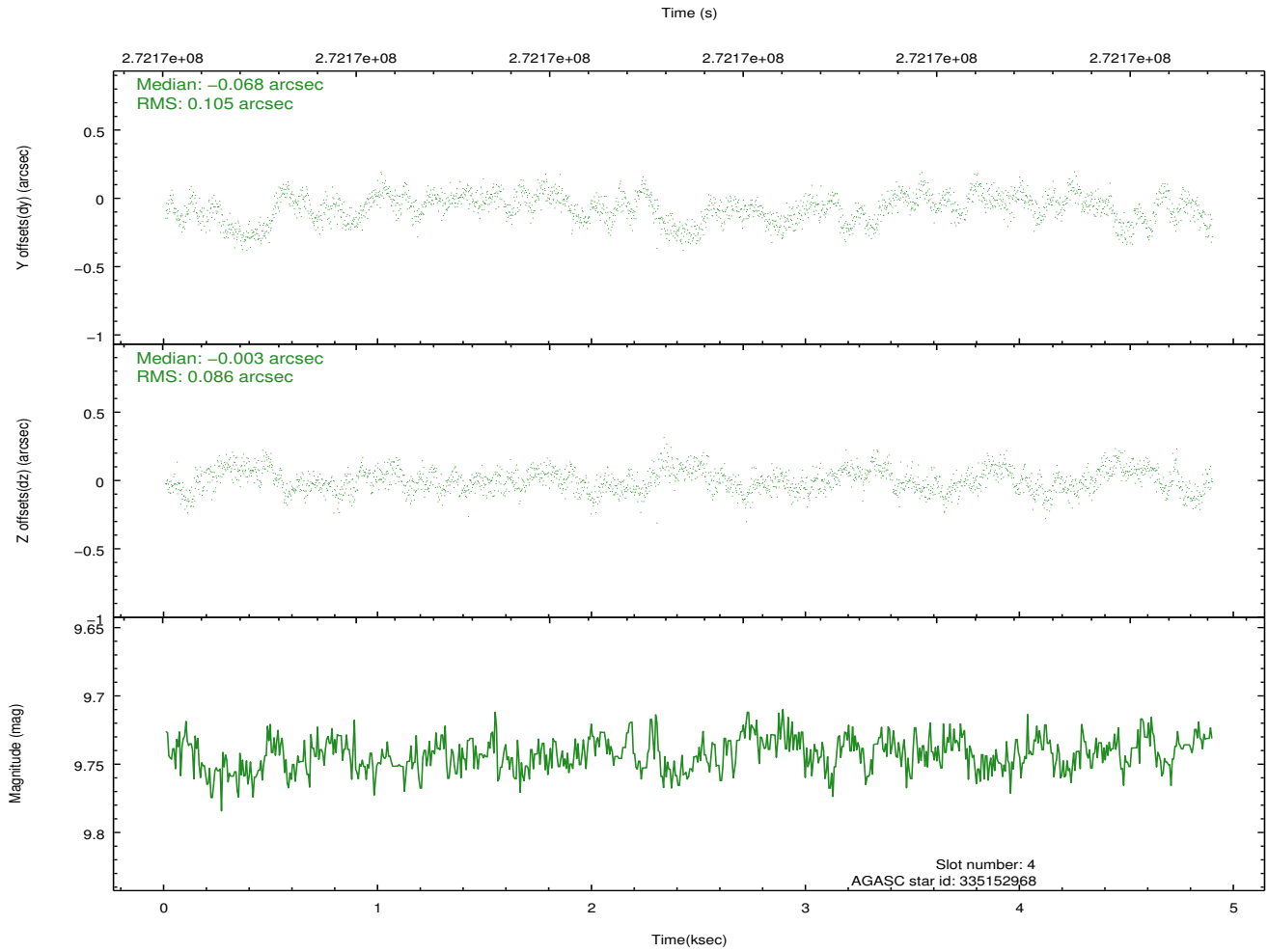
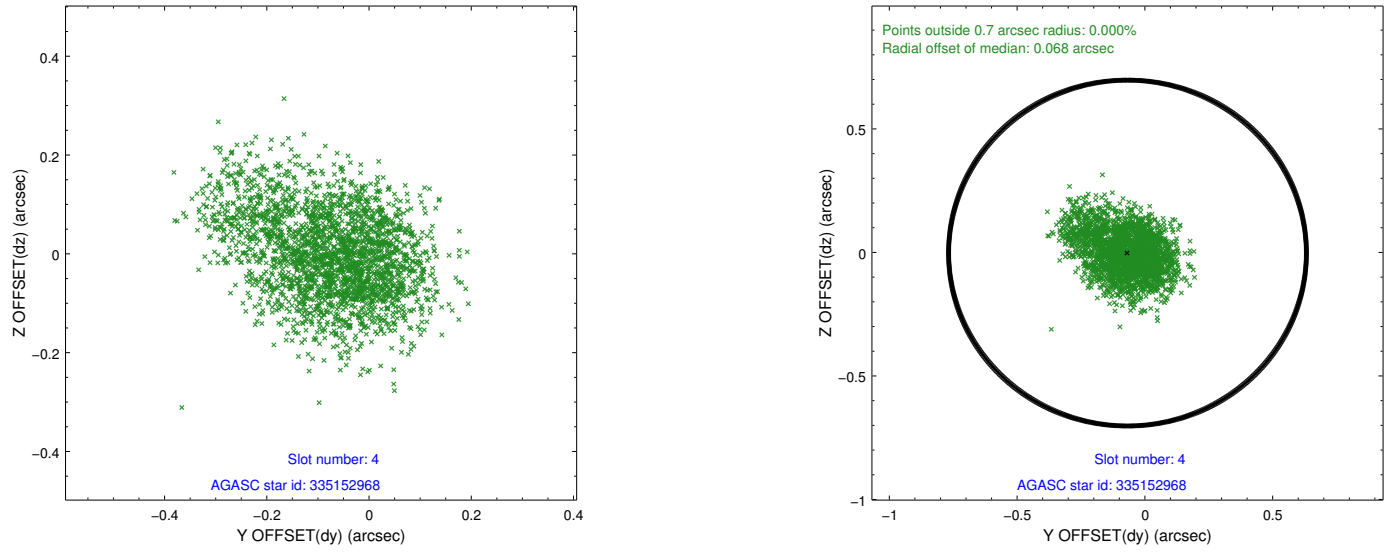
slot	status	id	mag	n_pts	med_dy	med_dz	dr1	dr2	ra	dec	mean_y	mean_z
0	FID	ACIS-I-1	7.24	1194	0.053	-0.050	0.007	0.012	0.000000	0.000000	932.41	-835.18
1	FID	ACIS-I-5	7.23	1194	-0.167	0.063	0.007	0.011	0.000000	0.000000	-1815.19	1061.85
2	FID	ACIS-I-6	7.24	1194	0.022	0.058	0.007	0.012	0.000000	0.000000	396.61	1707.72
3	GUIDE	335023304	8.42	2387	-0.149	0.040	0.076	0.119	218.883608	34.686545	1530.08	-578.72
4	GUIDE	335152968	9.74	2376	-0.068	-0.003	0.144	0.240	219.446087	34.867883	877.04	1083.88
5	GUIDE	335153936	10.24	2379	0.034	0.058	0.176	0.285	219.671318	34.457728	2349.82	1757.37
6	GUIDE	335553576	10.20	2382	0.143	-0.071	0.149	0.240	219.666266	35.520346	-1474.60	1721.46
7	GUIDE	335554008	9.77	2383	0.041	-0.029	0.115	0.181	219.383422	35.471863	-1298.13	893.24

2.4 Star Slots

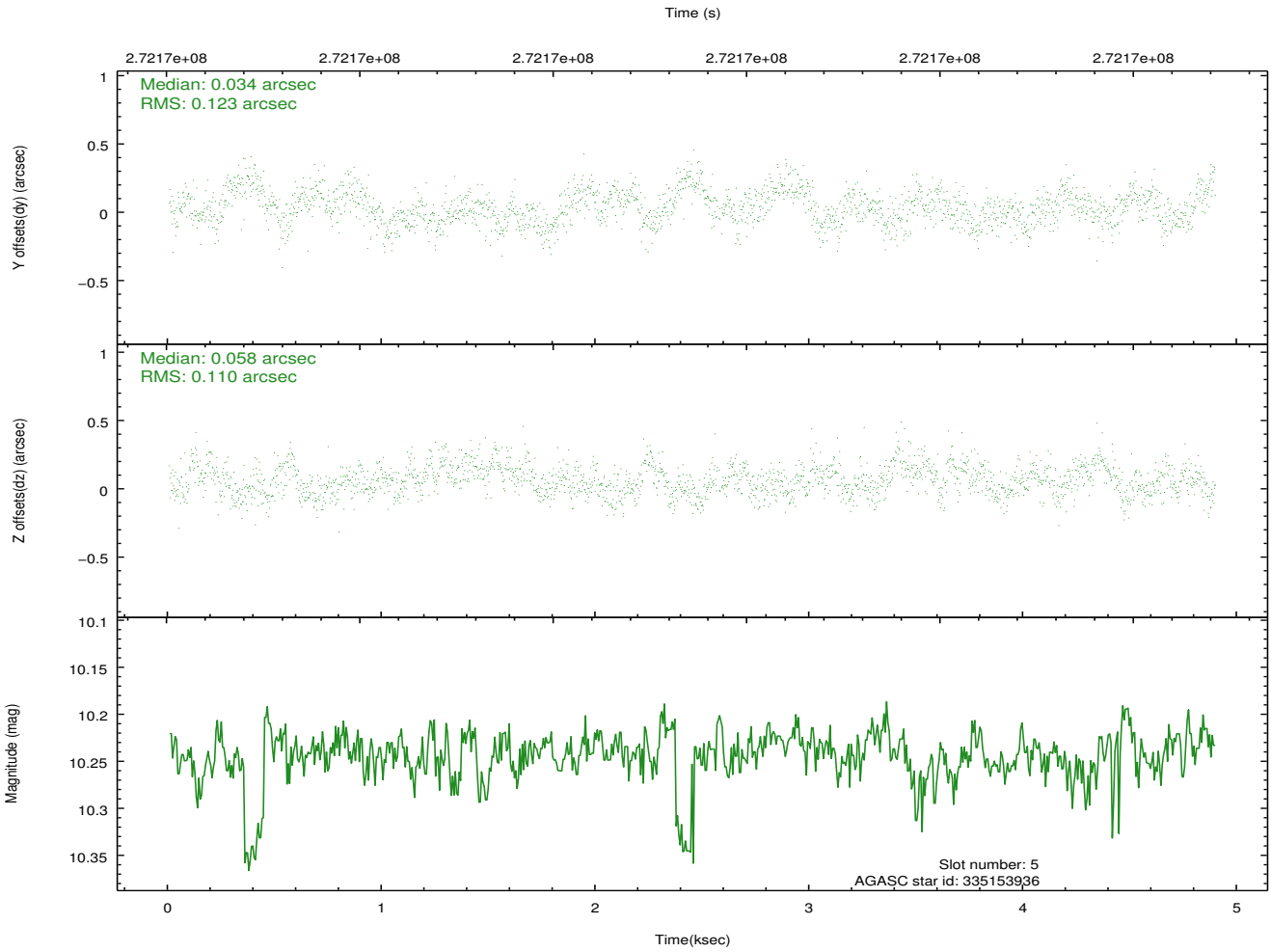
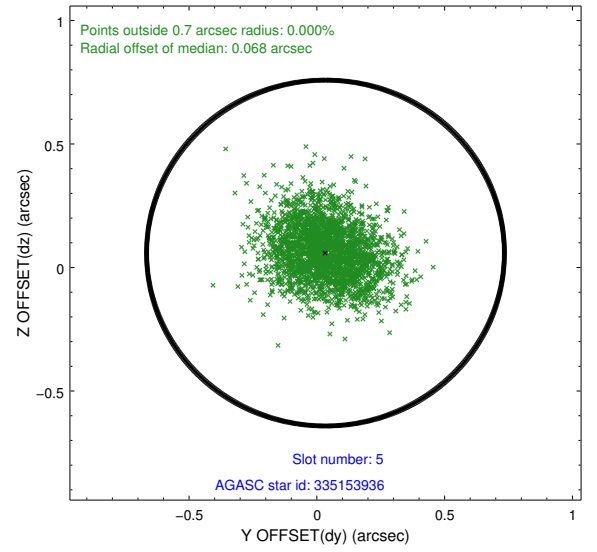
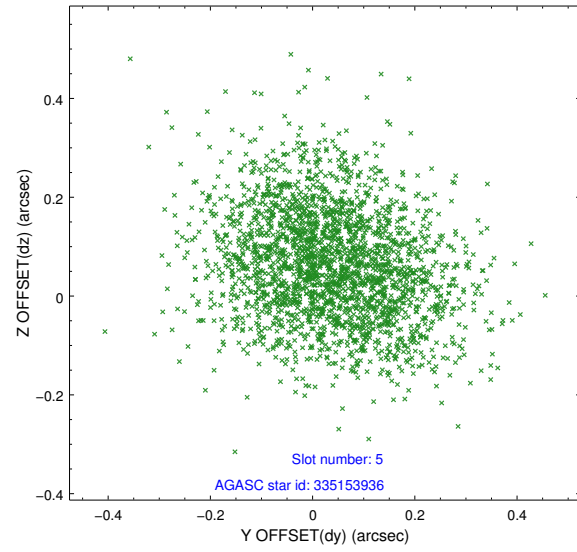
2.4.1 Slot 3



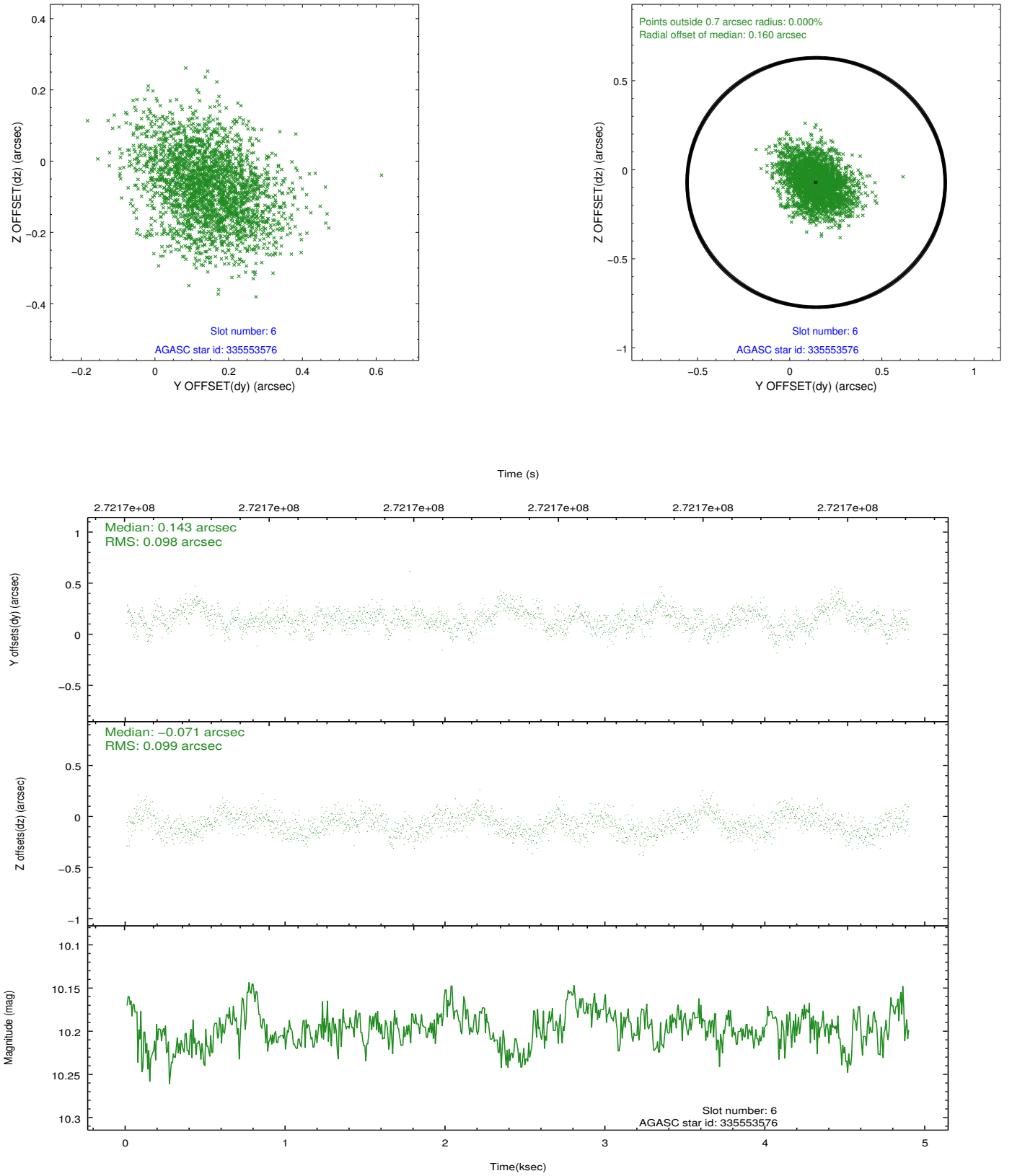
2.4.2 Slot 4



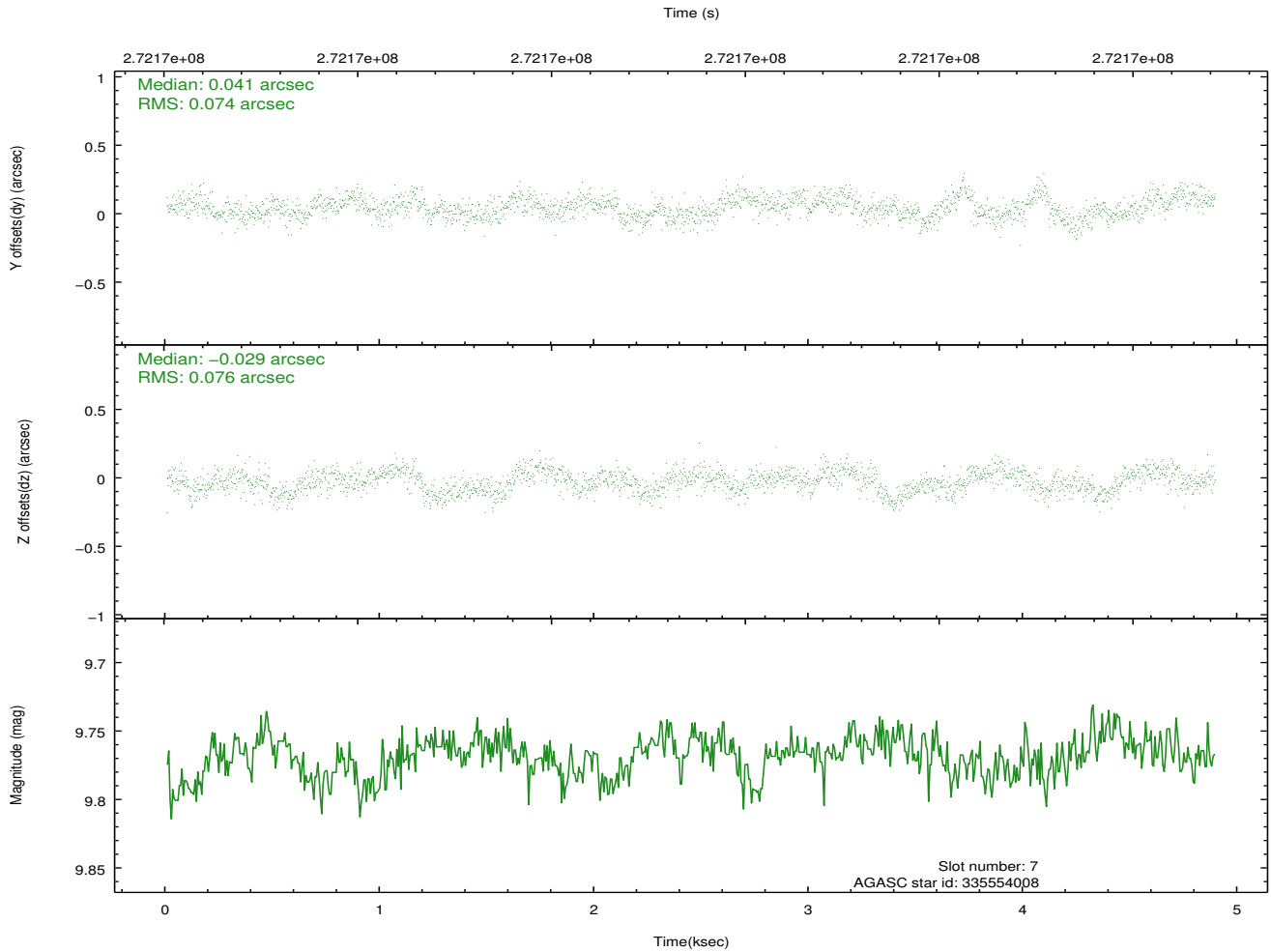
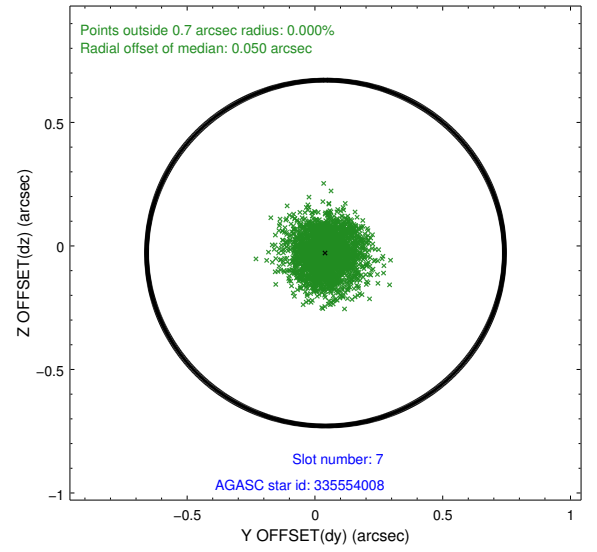
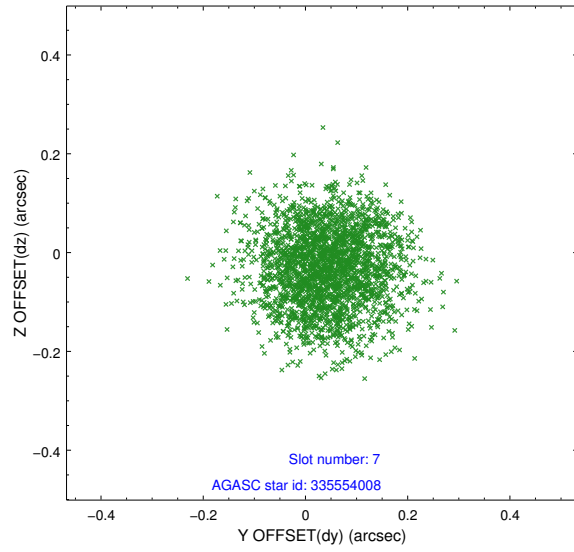
2.4.3 Slot 5



2.4.4 Slot 6

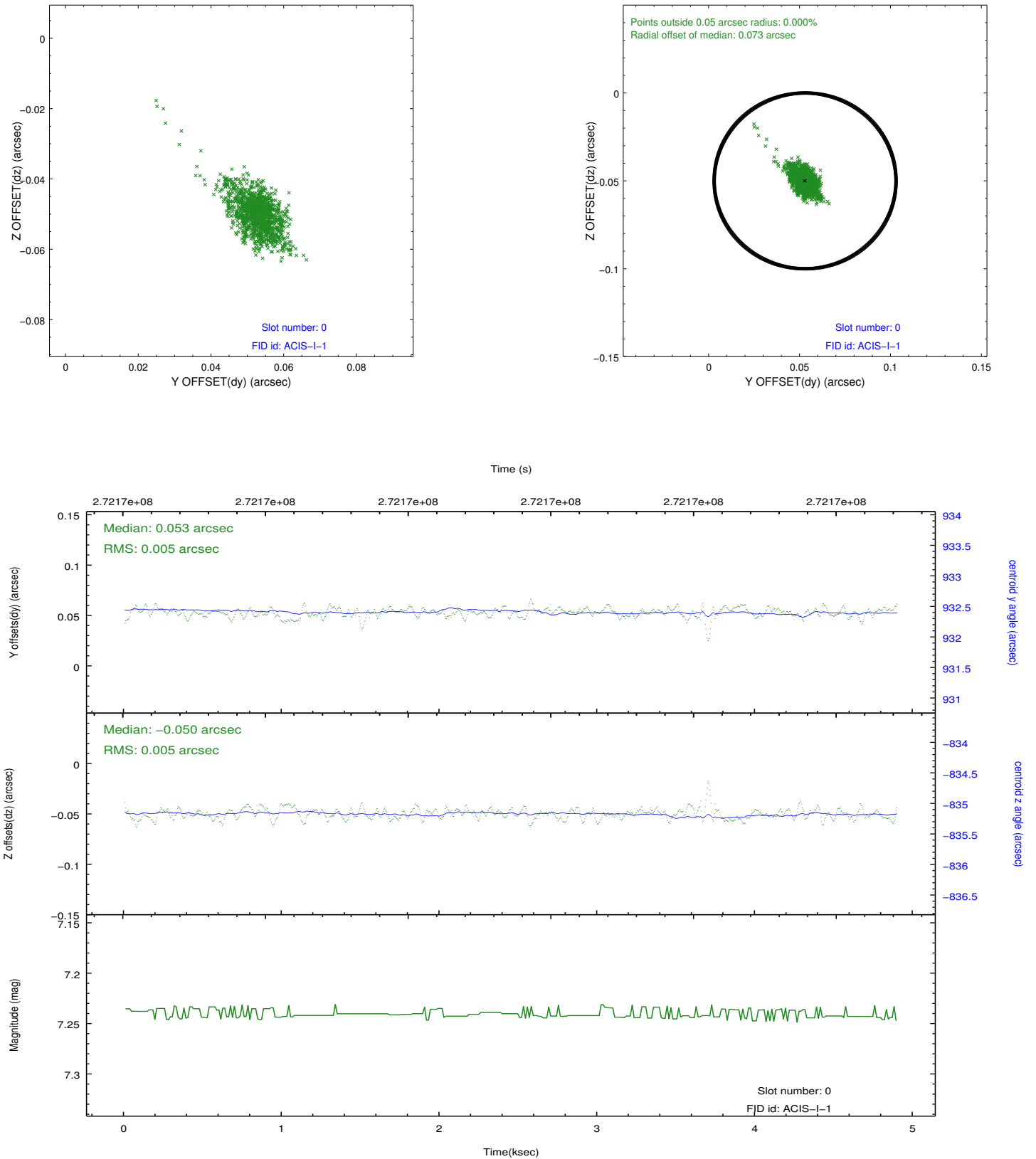


2.4.5 Slot 7

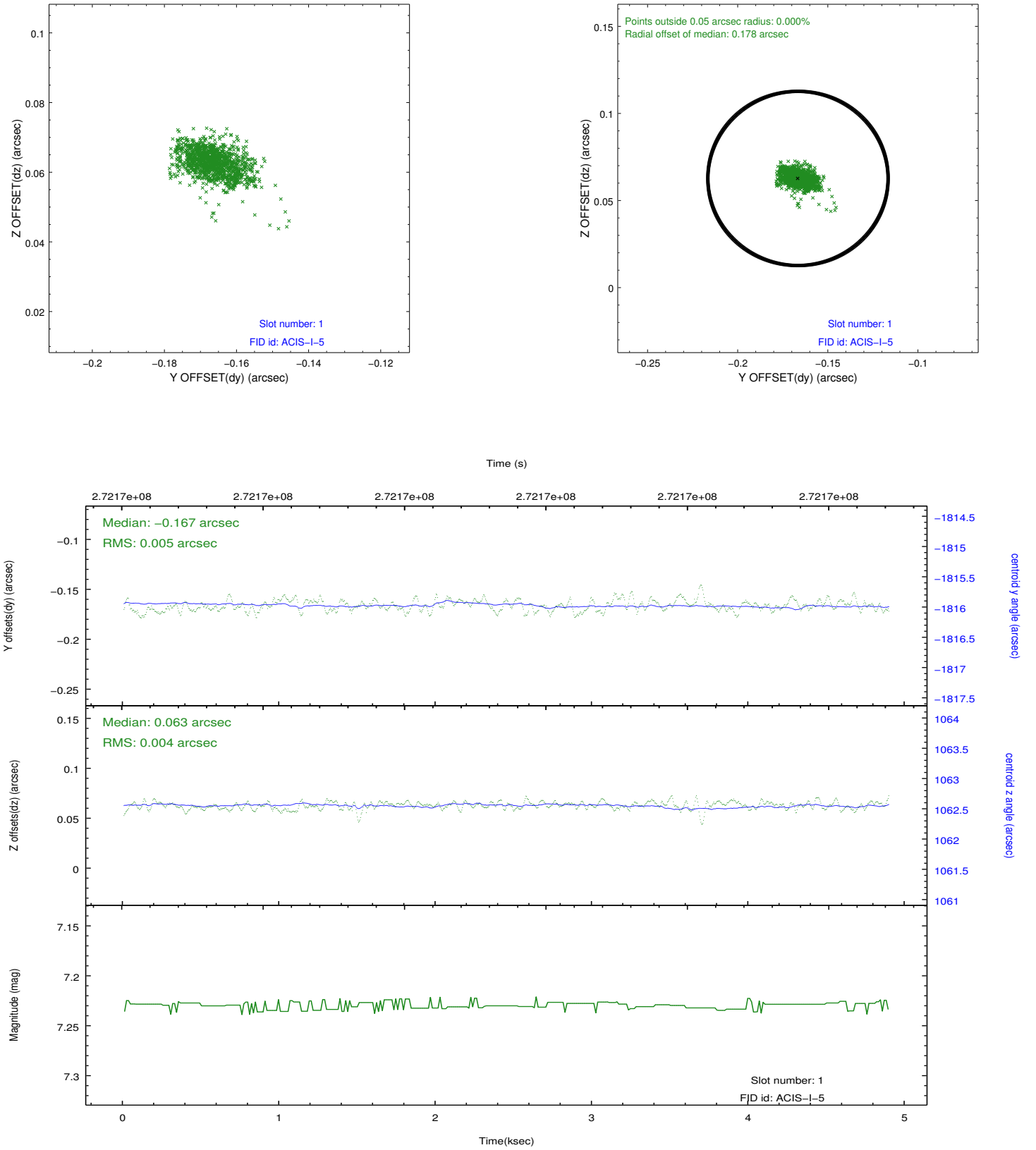


2.5 FID Slots

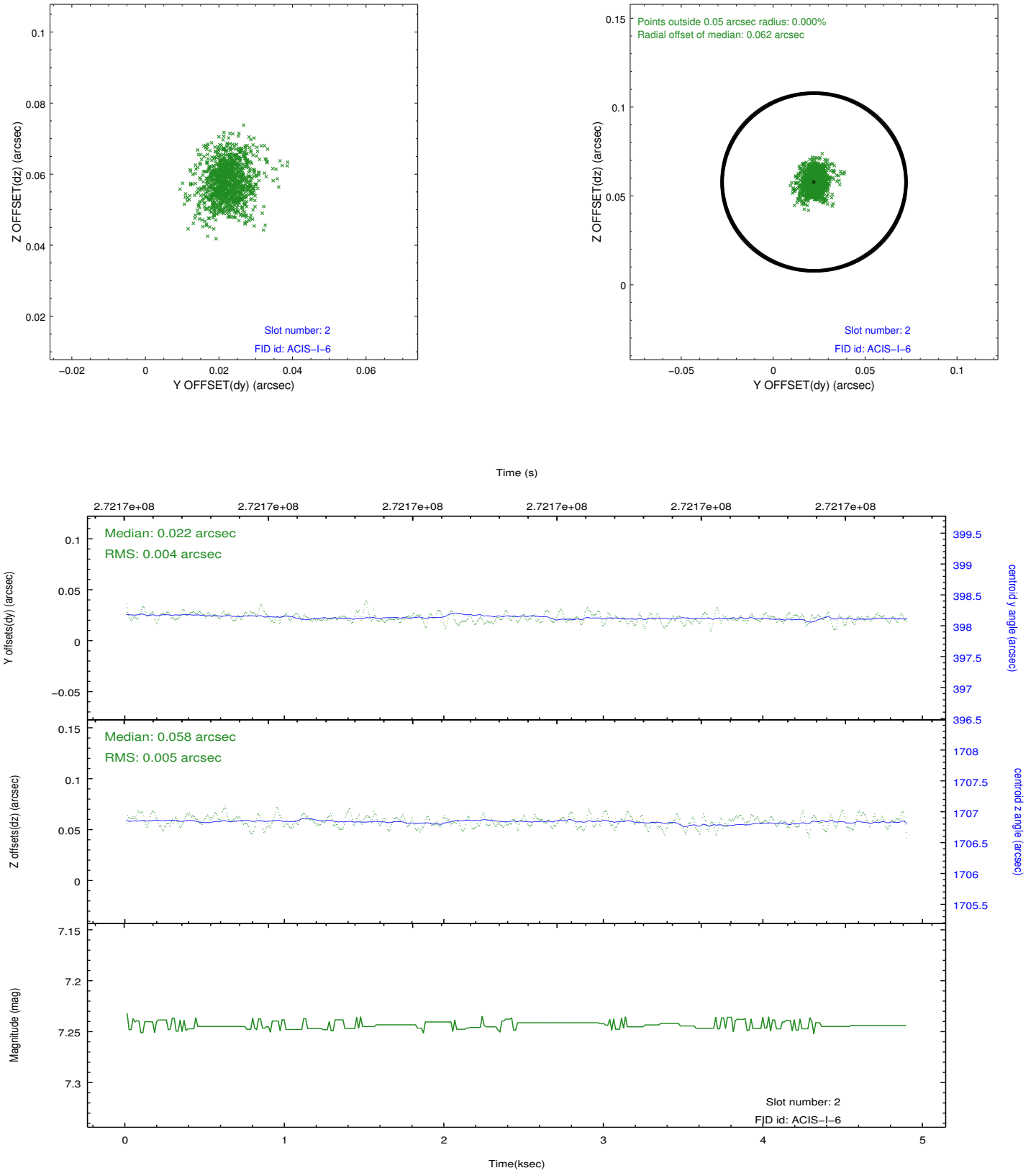
2.5.1 Slot 0



2.5.2 Slot 1



2.5.3 Slot 2



A Summary

A.1 Status

V&V Scientist	Jen Lauer
V&V Date (YYYY-MM-DD)	2012.04.08
V&V Edition	1
V&V Disposition and Status	OK
V&V Charge Time	4.47640003

A.2 Comments