

# V&V Reference Report

## L2 ASCDS Version : 8.4.3.1

Observation 7041 - L2 Version 2  
Chandra X-Ray Center

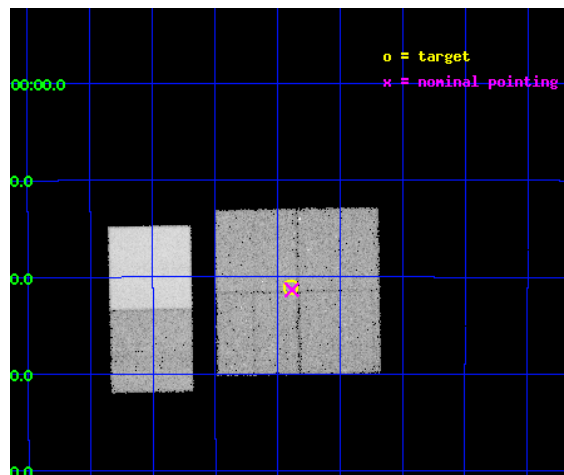
L2 Processing Date : Apr 9 2012

## Contents

<b>1</b>	<b>Front</b>	<b>2</b>
<b>2</b>	<b>OBI</b>	<b>3</b>
2.1	OBI . . . . .	3
2.1.1	Images . . . . .	3
2.1.2	Bias . . . . .	3
2.1.3	Parameters . . . . .	4
2.1.4	Events . . . . .	4
2.2	Compared Parameters . . . . .	5
2.3	Aspect . . . . .	6
2.4	Star Slots . . . . .	9
2.4.1	Slot 3 . . . . .	9
2.4.2	Slot 4 . . . . .	10
2.4.3	Slot 5 . . . . .	11
2.4.4	Slot 6 . . . . .	12
2.4.5	Slot 7 . . . . .	13
2.5	FID Slots . . . . .	14
2.5.1	Slot 0 . . . . .	14
2.5.2	Slot 1 . . . . .	15
2.5.3	Slot 2 . . . . .	16
<b>A</b>	<b>Summary</b>	<b>17</b>
A.1	Status . . . . .	17
A.2	Comments . . . . .	17

# 1 Front

seq_num	900457	Sequence number
obs_id	7041	Observation id
title	A Legacy Study of Stellar Life Cycles at the Galactic Center	Propo
observer	Dr. Michael Muno	Principal investigator
object	Deep GCS 10	Source name
dtcycle	0	&#160
cycle	P	events from which exps? Prim/Second/Both
ra_targ	265.84875	Observer's specified target RA [deg]
dec_targ	-29.351389	Observer's specified target Dec [deg]
ra_nom	265.84656770536	Nominal RA [deg]
dec_nom	-29.355653721922	Nominal Dec [deg]
roll_nom	268.98350101744	Nominal Roll [deg]
revision	2	Processing version of data
ontime	20179.199924886	Sum of GTIs [s]
livetime	19923.678744982	Livetime [s]
ontime0	20179.199924886	Sum of GTIs [s]
ontime1	20179.199924886	Sum of GTIs [s]
ontime2	20179.199924886	Sum of GTIs [s]
ontime3	20179.199924886	Sum of GTIs [s]
ontime6	20179.199924886	Sum of GTIs [s]
ontime7	20179.199924886	Sum of GTIs [s]
l2events	214345	Number of level 2 events

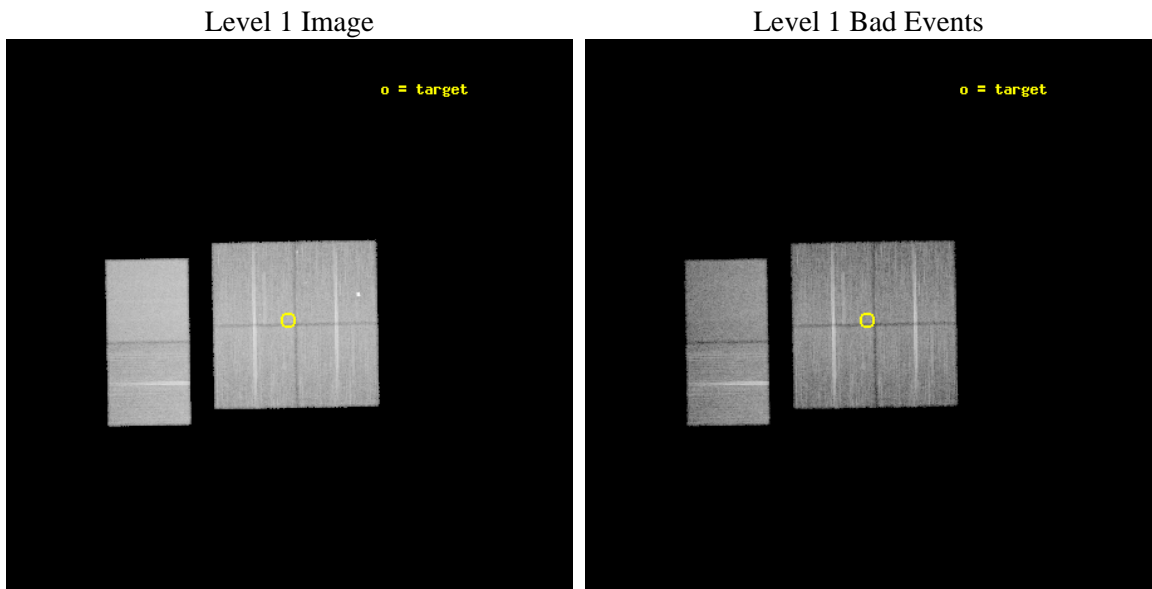




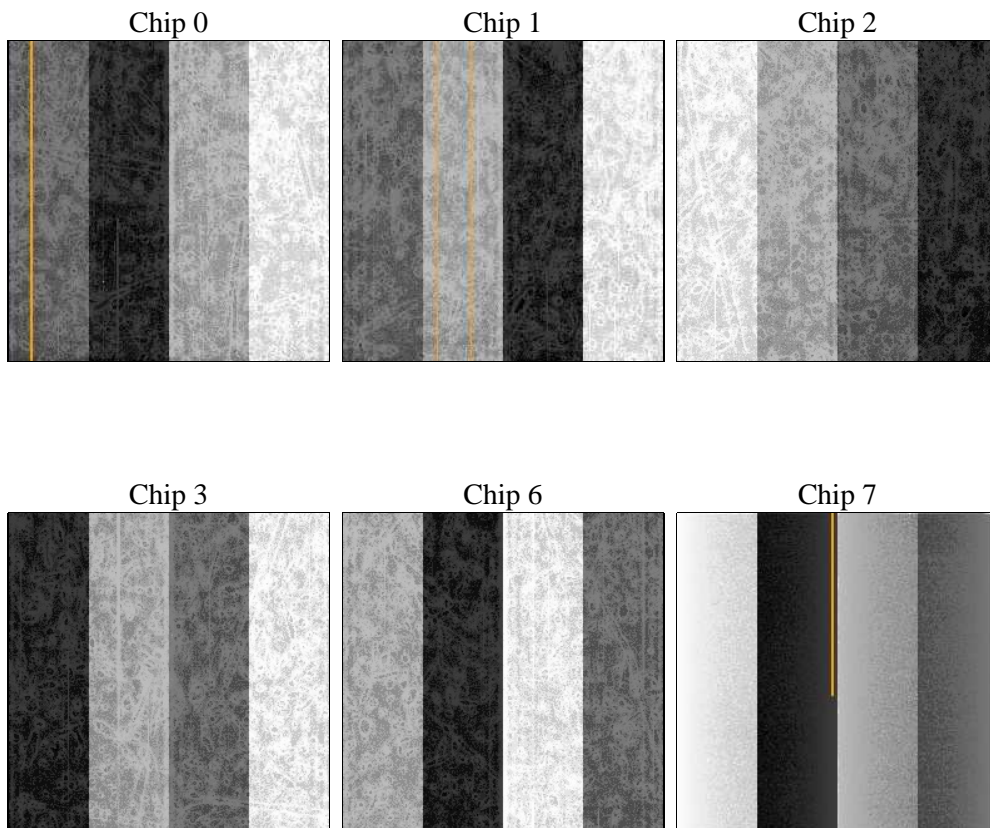
## 2 OBI

### 2.1 OBI

#### 2.1.1 Images



#### 2.1.2 Bias



### 2.1.3 Parameters

obi_num	0	Obi number	sched_exp_time	20000.000000	[s] Scheduled observation exposure time
ascdsver	8.4.3.1	Processing system revision	ontime	20179.199924886	Sum of GTIs [s]
caldsver	4.4.9	&#160	ontime0	20179.199924886	Sum of GTIs [s]
date	2012-04-09T15:55:07	Date and time of file creation	ontime1	20179.199924886	Sum of GTIs [s]
revision	2	Processing version of data	ontime2	20179.199924886	Sum of GTIs [s]
			ontime3	20179.199924886	Sum of GTIs [s]
			ontime6	20179.199924886	Sum of GTIs [s]
			ontime7	20179.199924886	Sum of GTIs [s]
			l1events	1227291	Number of level 1 events

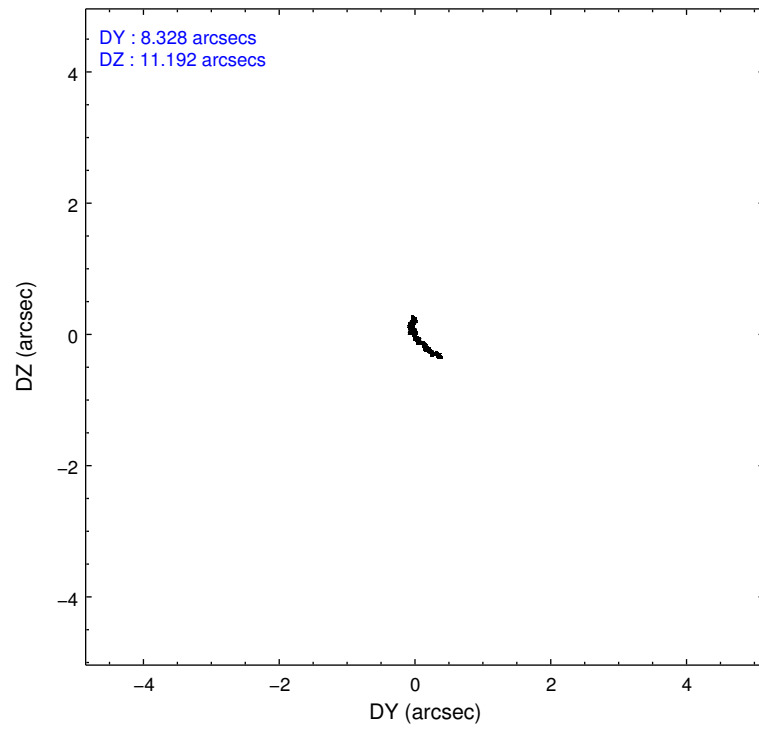
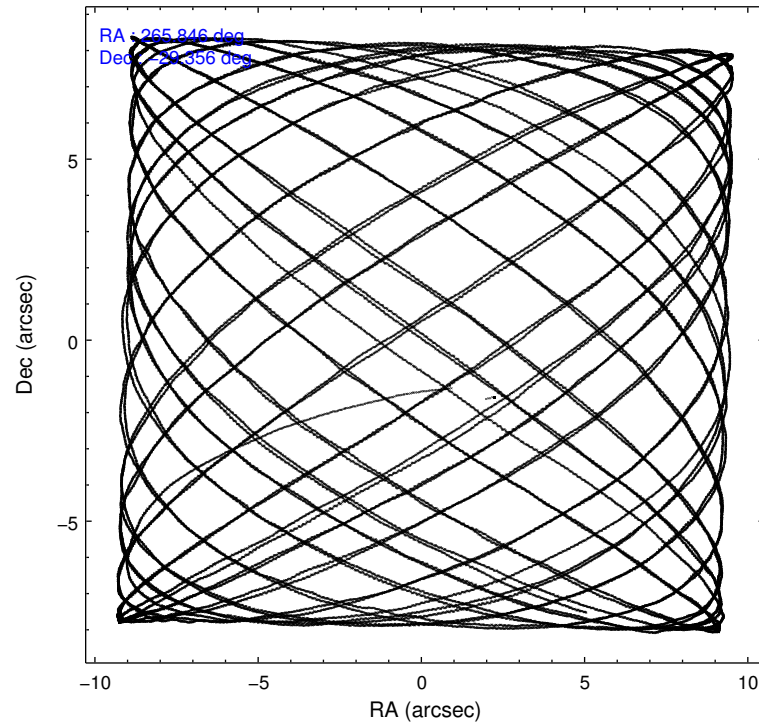
### 2.1.4 Events

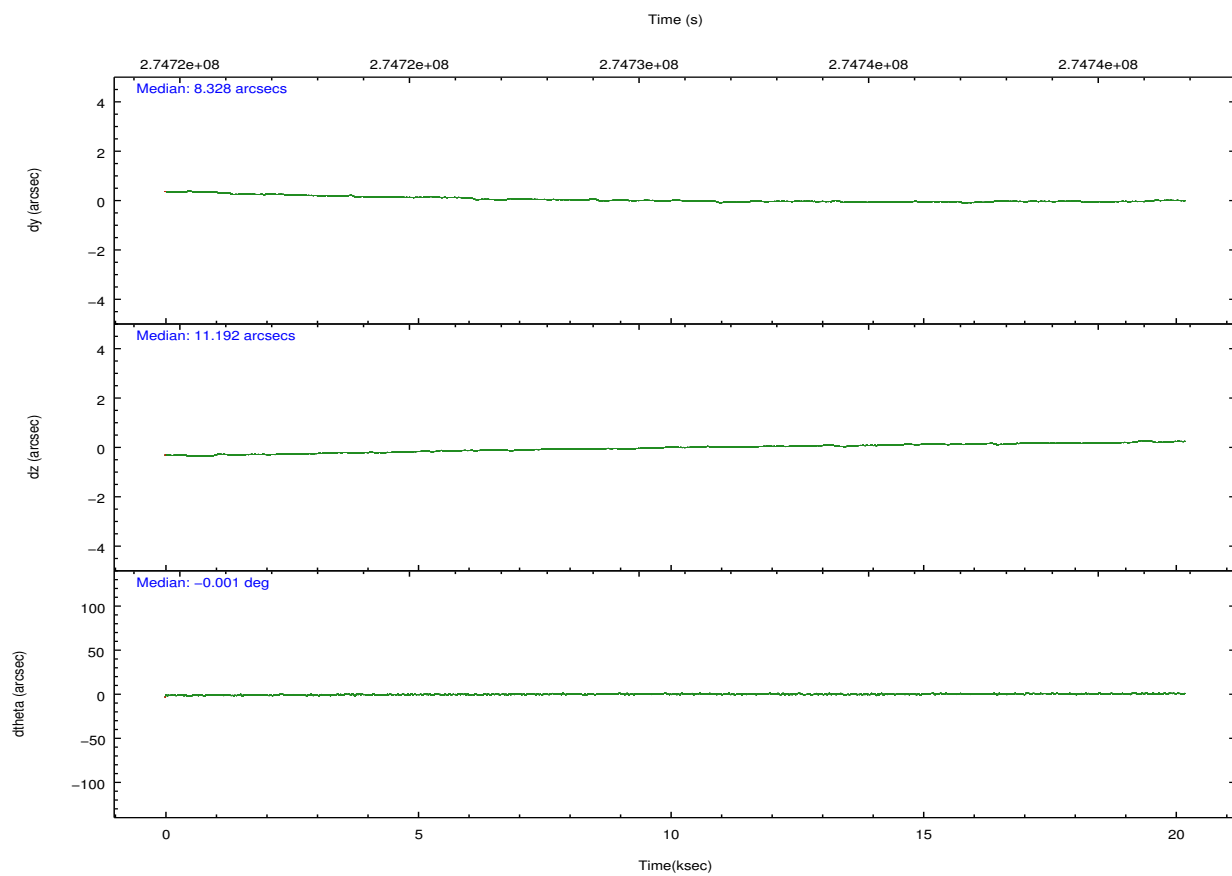
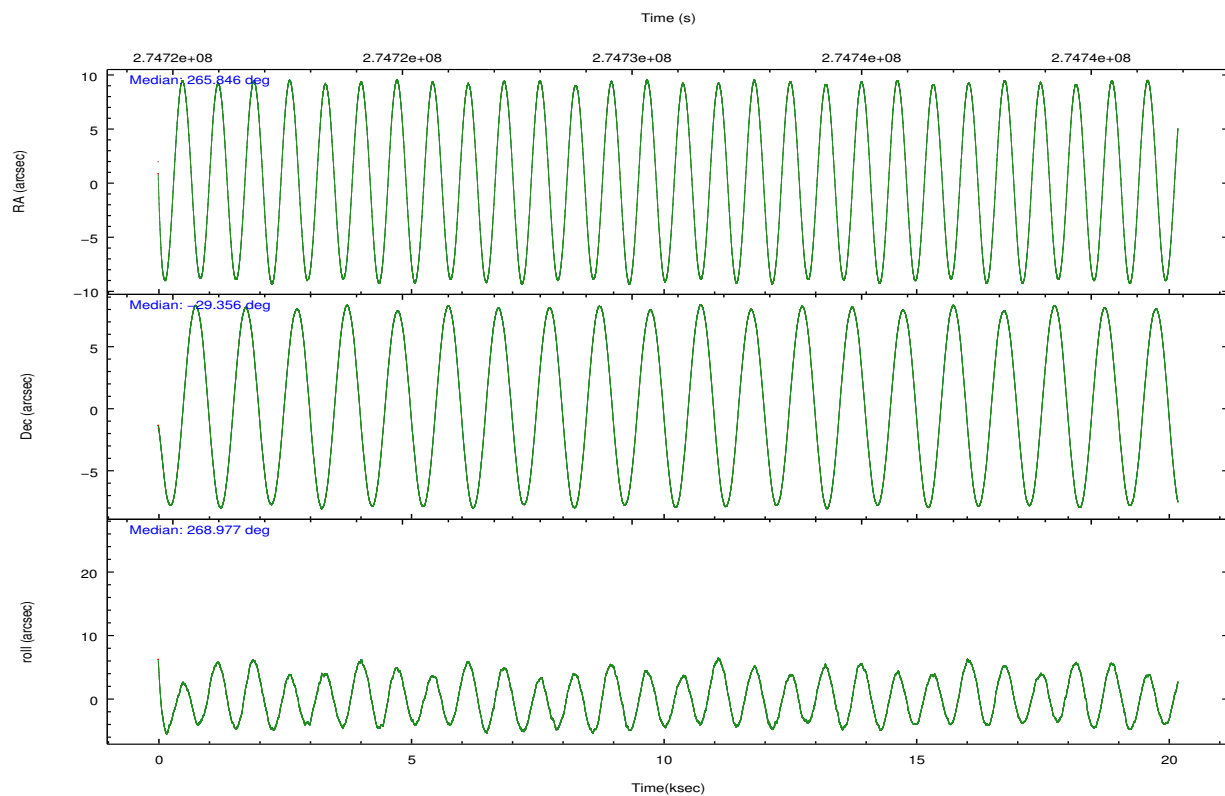
	ccd 0	ccd 1	ccd 2	ccd 3	ccd 6	ccd 7		ccd 0	ccd 1	ccd 2	ccd 3	ccd 6	ccd 7
level 1 events	182068	183433	197919	192352	205851	265668	grade 0 events	11157	14801	12409	12079	12243	10099
rejected events	158265	154344	173070	167629	179267	158323		6%	8%	6%	6%	5%	3%
rejected %	86%	84%	87%	87%	87%	59%	grade 1 events	130	139	133	132	128	249
								0%	0%	0%	0%	0%	0%
							grade 2 events	5268	5845	5168	4886	5738	22875
								2%	3%	2%	2%	2%	8%
							grade 3 events	2380	2368	2277	2350	2419	9846
								1%	1%	1%	1%	1%	3%
							grade 4 events	2155	2367	2184	2305	2329	9845
								1%	1%	1%	1%	1%	3%
							grade 5 events	7318	8124	7337	8774	9210	24945
								4%	4%	3%	4%	4%	9%
							grade 6 events	4079	5059	4040	4261	5060	59992
								2%	2%	2%	2%	2%	22%
							grade 7 events	149581	144730	164371	157565	168724	127817
								82%	78%	83%	81%	81%	48%

## 2.2 Compared Parameters

Parameter	Planned	Actual	Parameter	Planned	Actual
Instrument	ACIS	ACIS	Obspar format version number	7	7
Detector	ACIS-012367	ACIS-012367	Obspar file type	PREDICTED	ACTUAL
Grating	NONE	NONE	Obspar update status	NONE	UPDATED
Data mode	FAINT	FAINT	Number of optional ACIS chips dropped	0	0
Observation mode	POINTING	POINTING	On-chip summing requested	N	N
[deg] Pointing RA	265.831256	265.8465677053603	Subarray requested	NONE	NONE
[deg] Pointing Dec	-29.331721	-29.35565372192193	Alternating exposures requested	N	N
[deg] Pointing Roll	268.767311	268.9835010174432	[s] Primary exposure time	0.000000	3.2
[mm] SIM focus pos	-0.782348	-0.7809083437167272			
[mm] SIM defocus	0	0.001439871863259334			
[mm] SIM translation stage pos	-233.592463	-233.5874344608287			
[mm] SIM translation stage offset	0	-0.005018542100998502			
[s] Observation start time (MET)	274720875.184000	274719295.89216			
Observation start date	2006-09-15T15:20:10	2006-09-15T14:54:55			
[s] Observation end time (MET)	274740875.184000	274742637.70575			
Observation end date	2006-09-15T20:53:30	2006-09-15T21:23:57			
Read mode	TIMED	TIMED			

## 2.3 Aspect



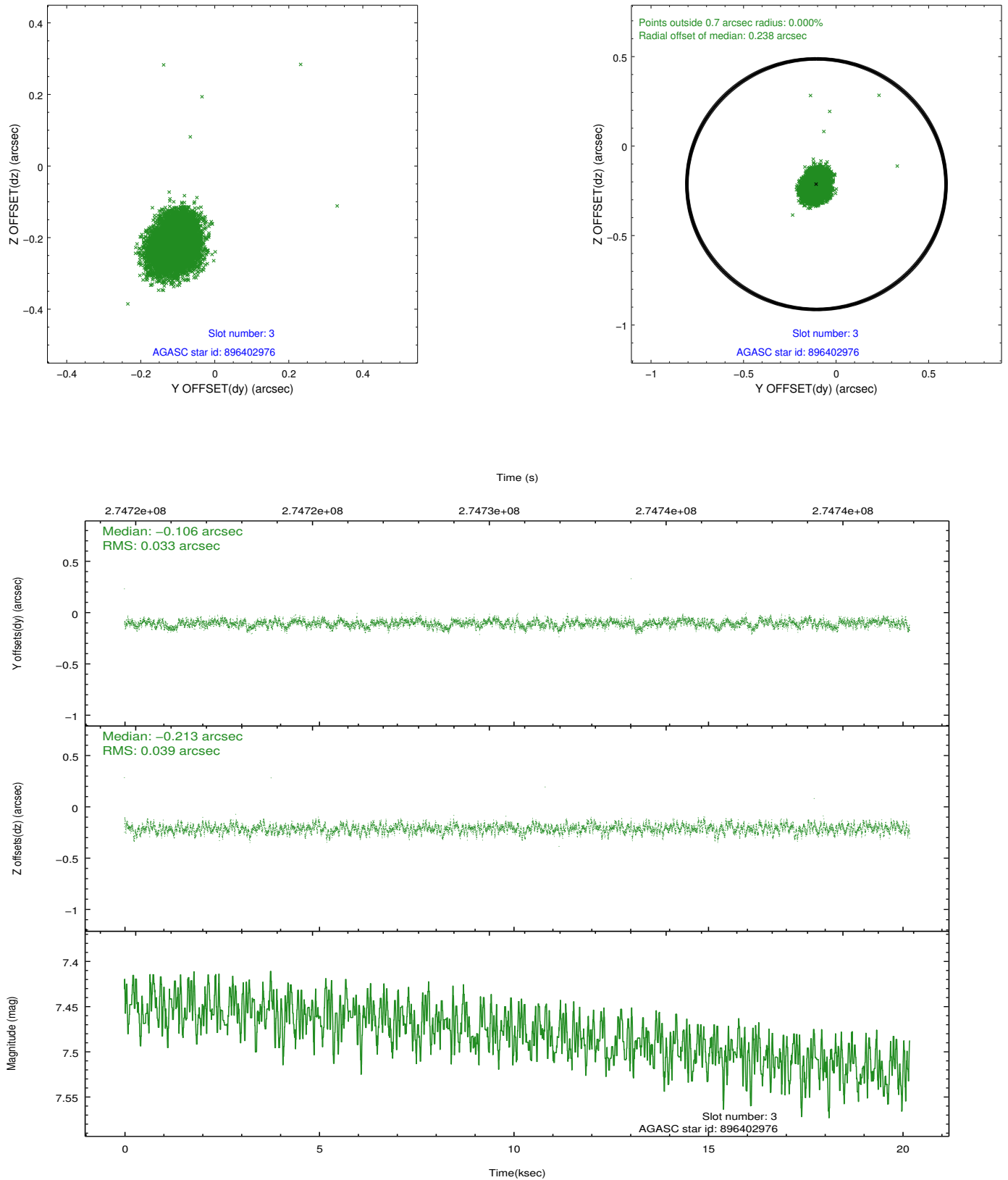


### Slot Statistics

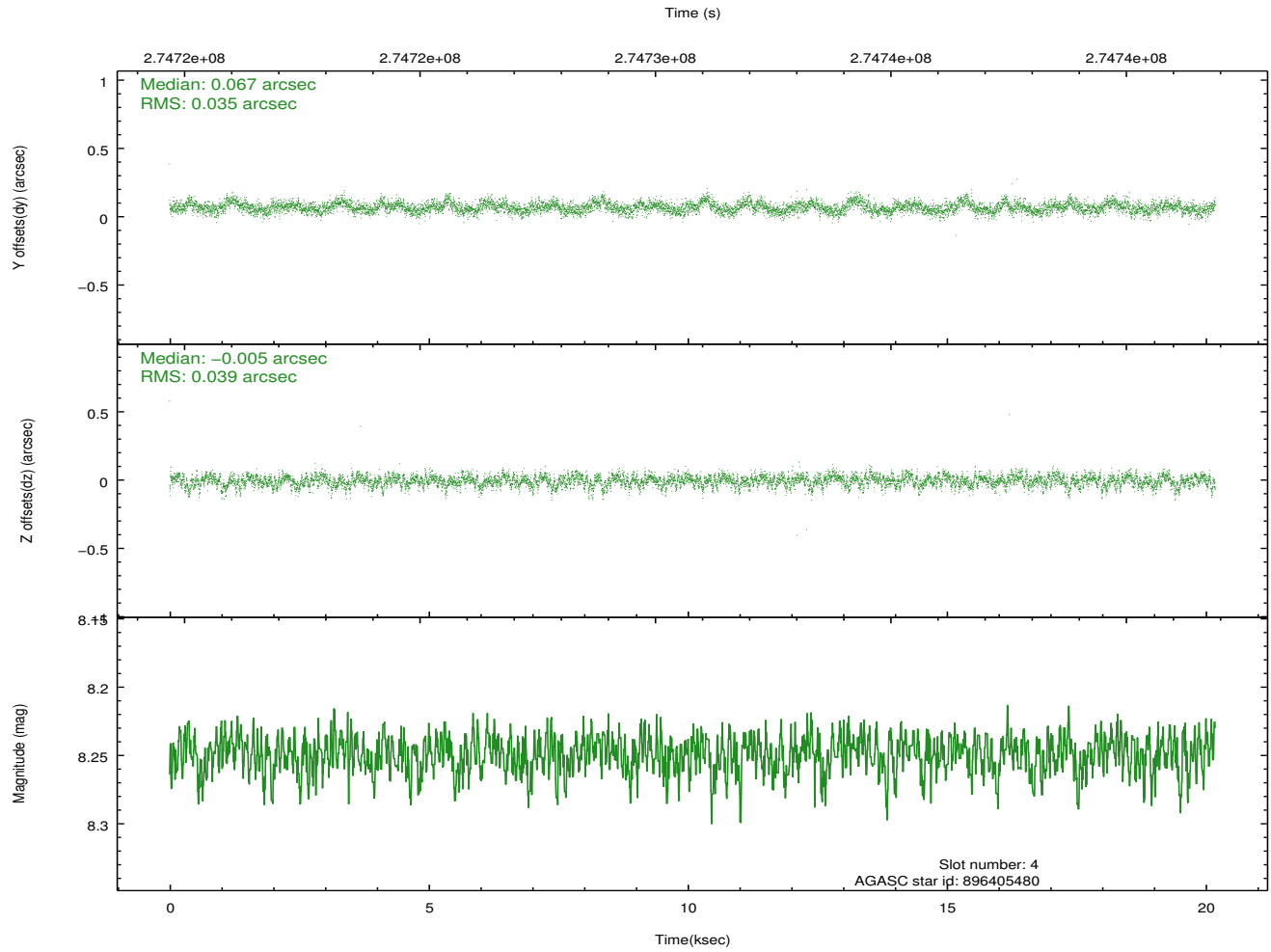
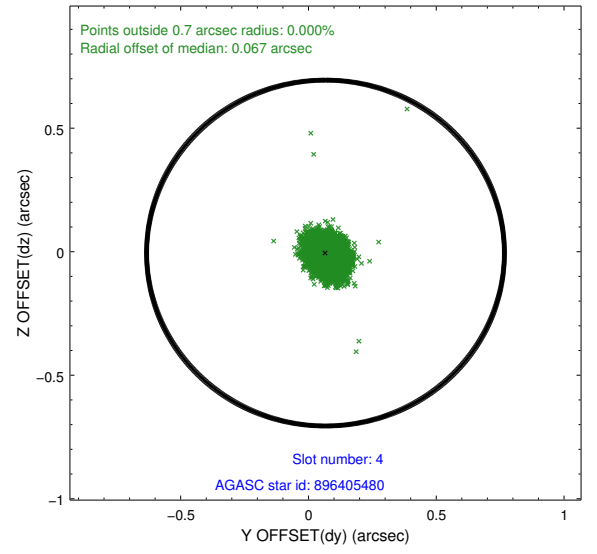
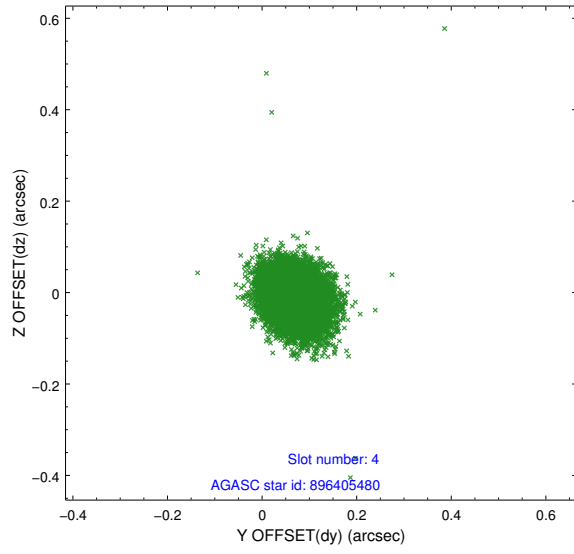
slot	status	id	mag	n_pts	med_dy	med_dz	dr1	dr2	ra	dec	mean_y	mean_z
0	FID	ACIS-I-1	7.24	4924	0.056	-0.054	0.008	0.015	0.000000	0.000000	931.31	-834.73
1	FID	ACIS-I-5	7.23	4924	-0.201	0.055	0.008	0.014	0.000000	0.000000	-1816.93	1062.81
2	FID	ACIS-I-6	7.25	4923	0.054	0.070	0.010	0.016	0.000000	0.000000	396.69	1707.51
3	GUIDE	896402976	7.48	9848	-0.106	-0.213	0.053	0.087	265.099474	-28.923203	-1413.24	-2336.98
4	GUIDE	896405480	8.25	9846	0.067	-0.005	0.054	0.091	265.220460	-29.599691	1010.97	-1890.53
5	GUIDE	896532952	9.03	9782	-0.116	0.119	0.074	0.122	266.383644	-28.787617	-1991.73	1700.41
6	GUIDE	896534128	8.71	9844	-0.036	0.036	0.079	0.123	266.503837	-29.080853	-942.71	2096.58
7	GUIDE	896541168	8.15	9845	0.189	0.066	0.053	0.084	266.319970	-29.850801	1838.85	1566.53

## 2.4 Star Slots

### 2.4.1 Slot 3

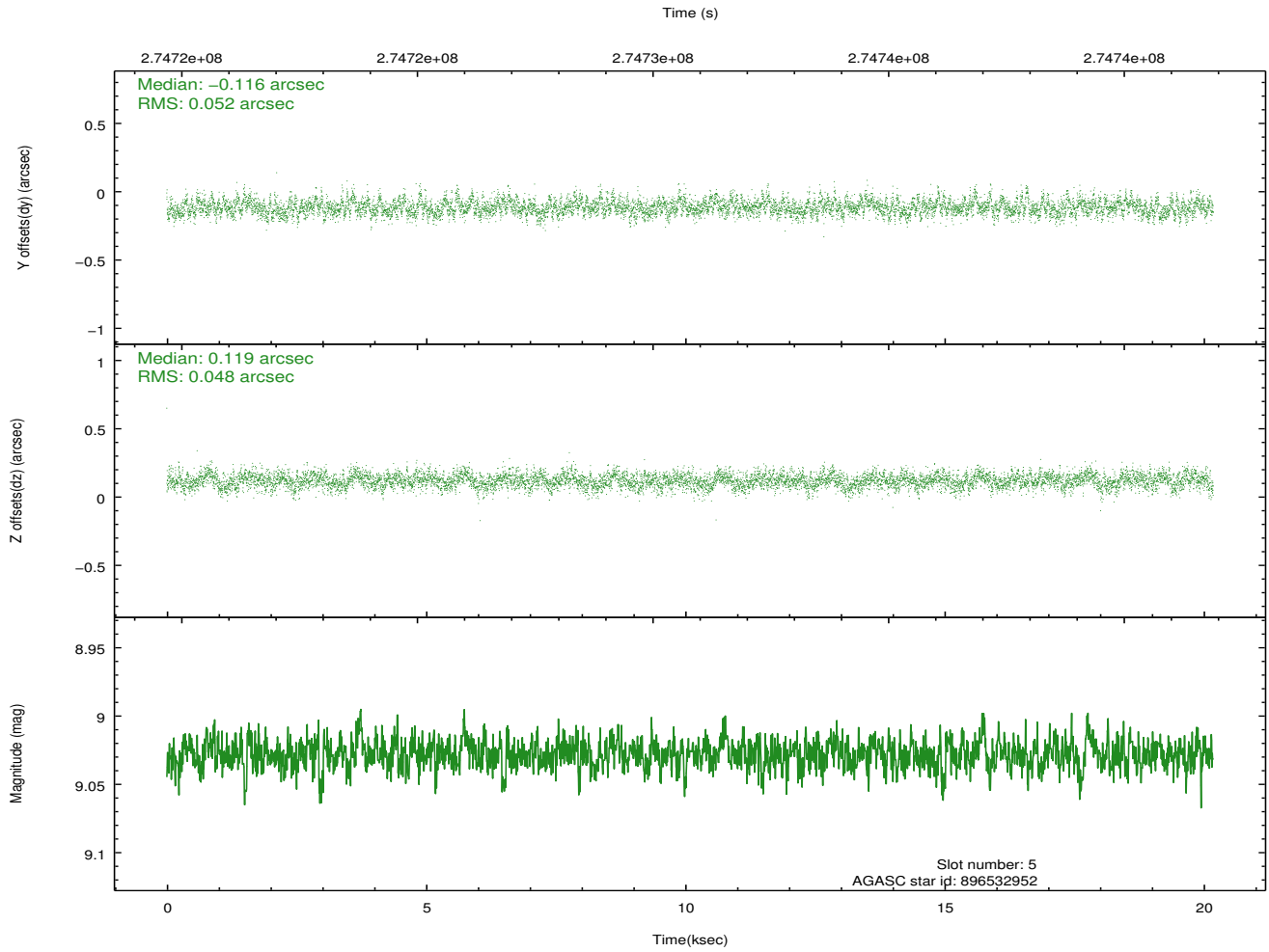
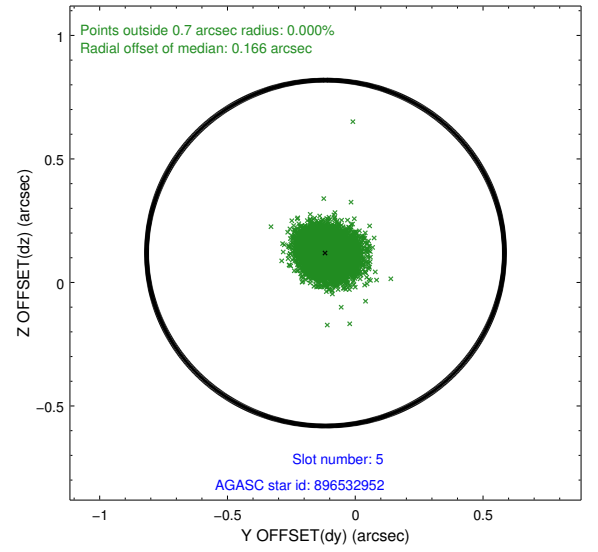
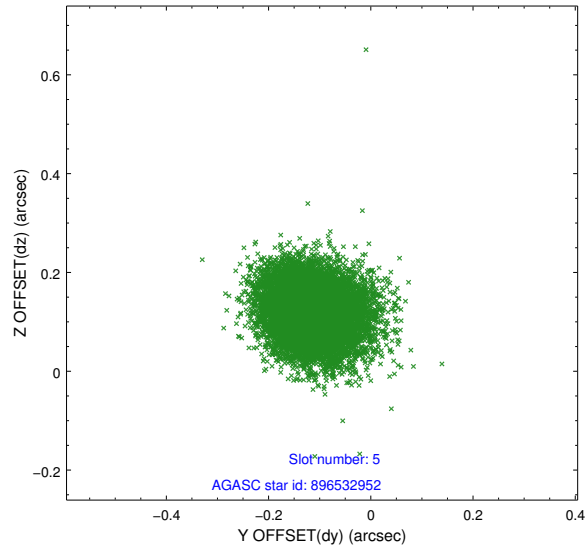


## 2.4.2 Slot 4

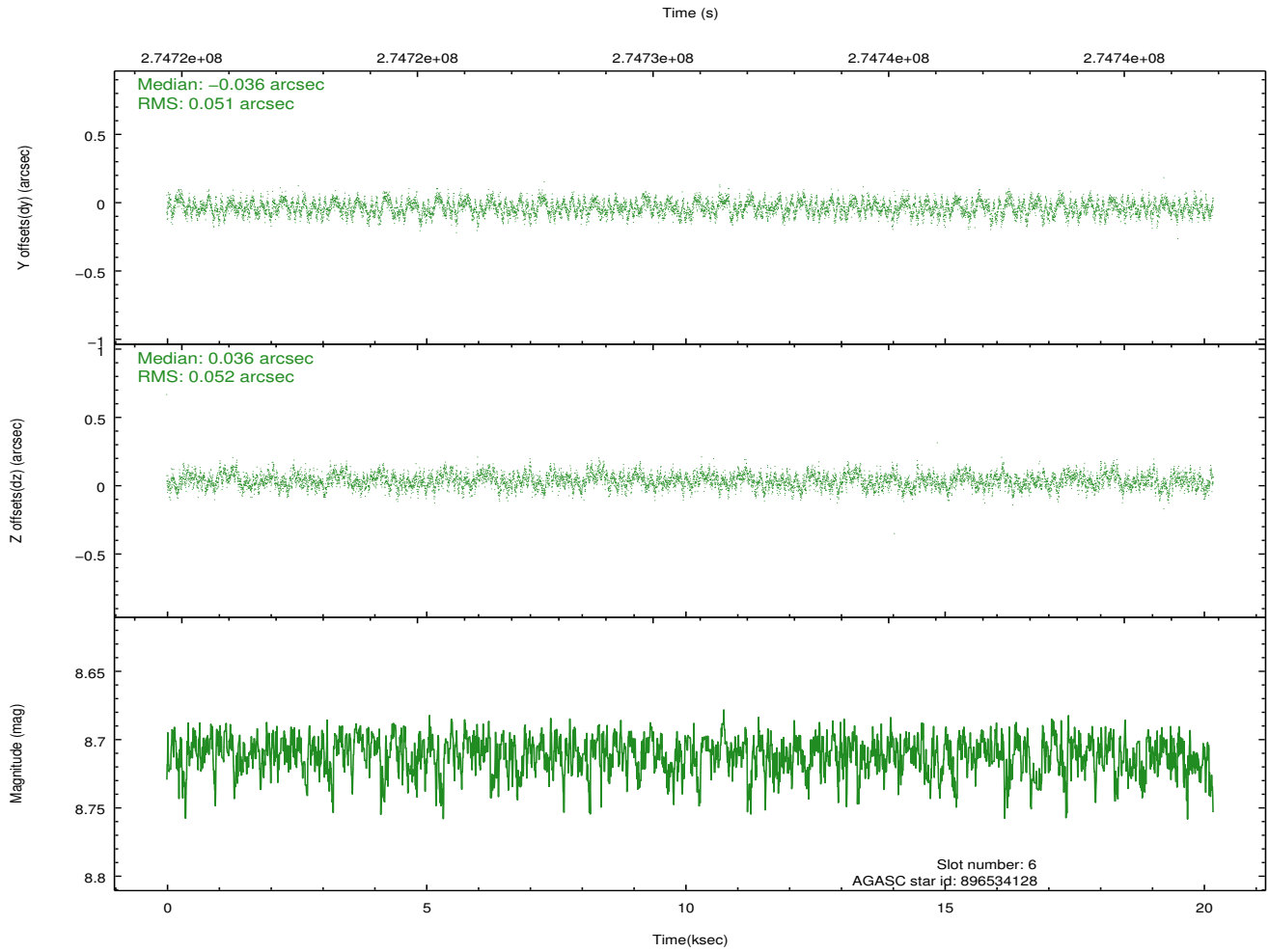
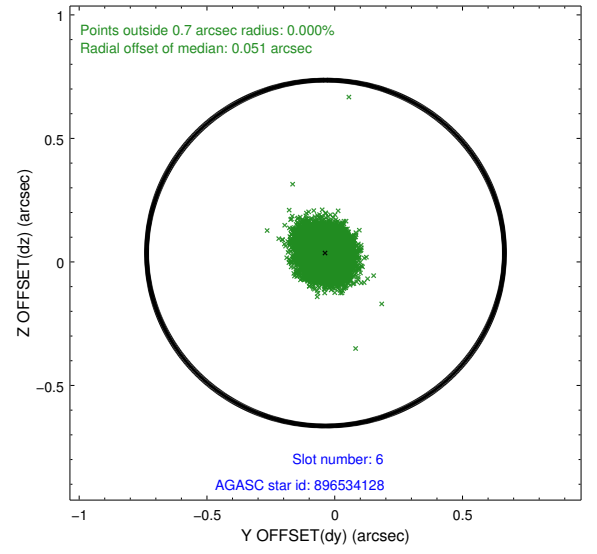
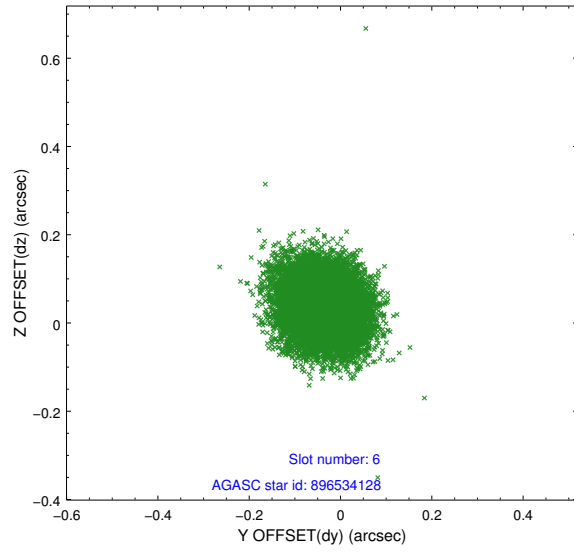




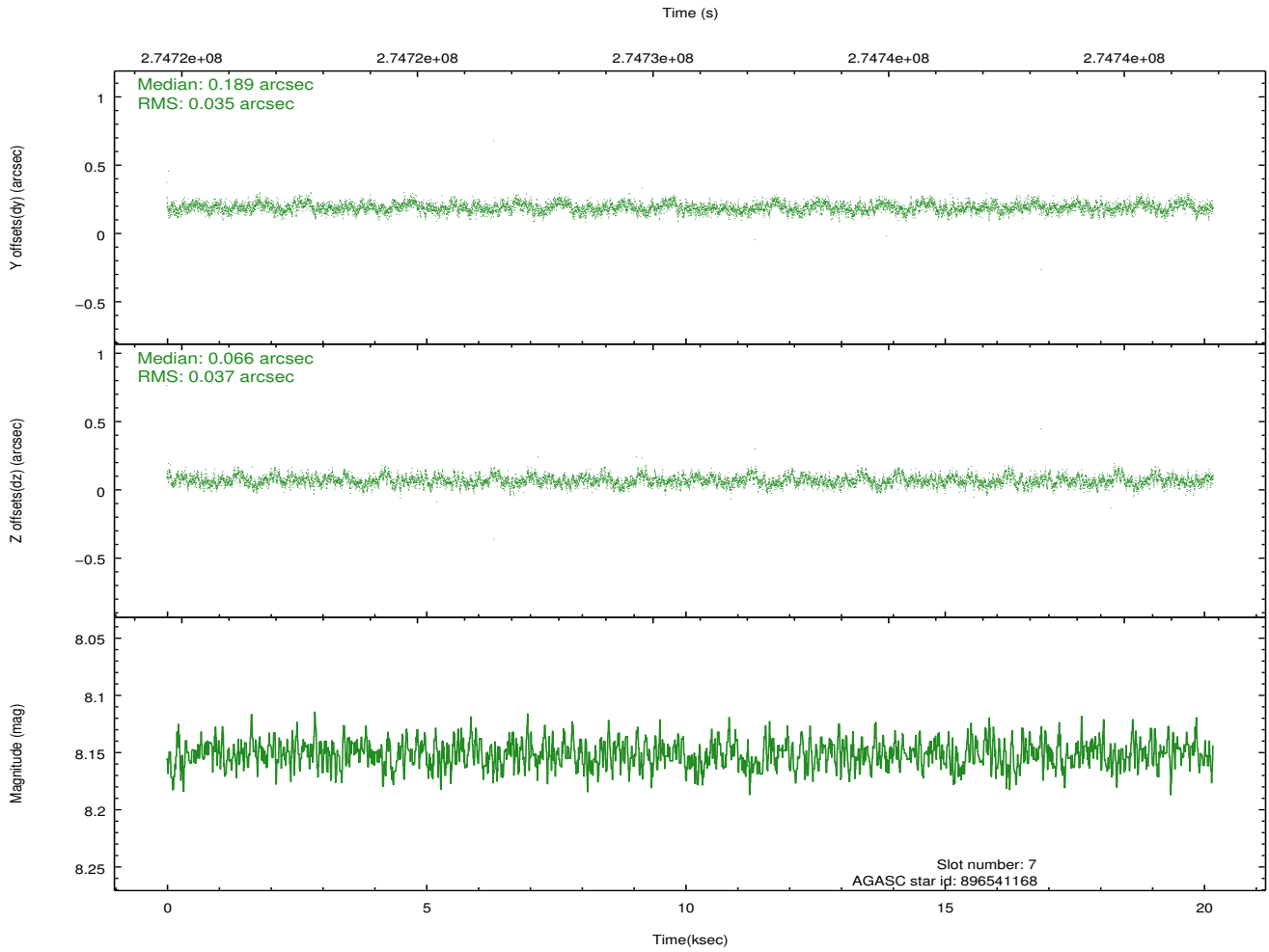
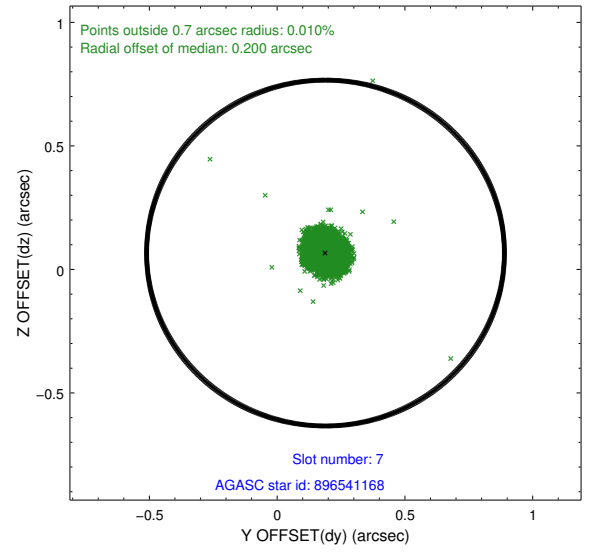
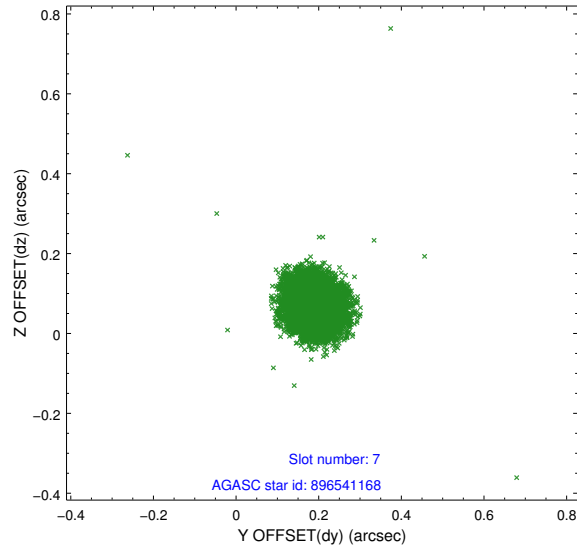
### 2.4.3 Slot 5



## 2.4.4 Slot 6

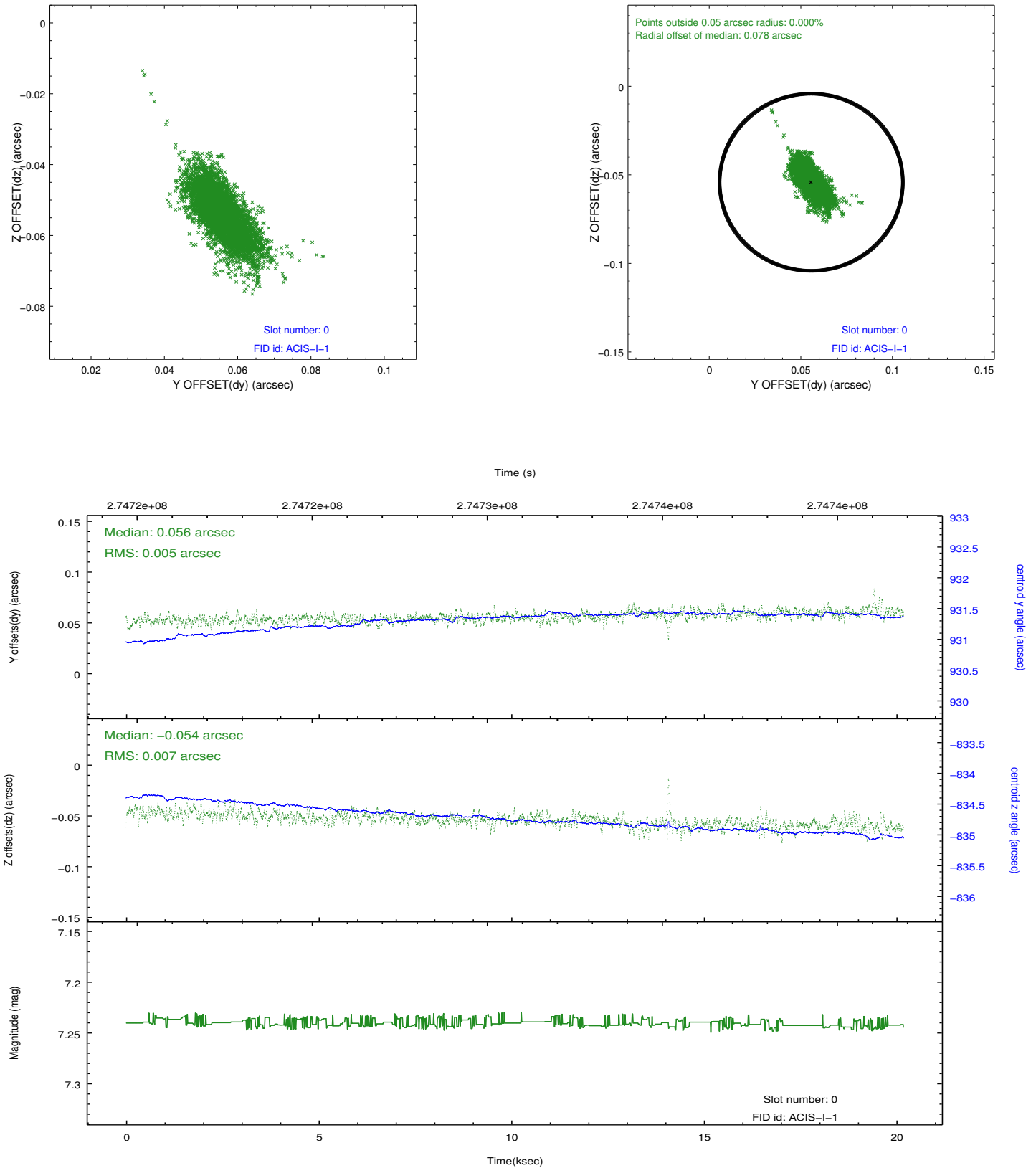


## 2.4.5 Slot 7

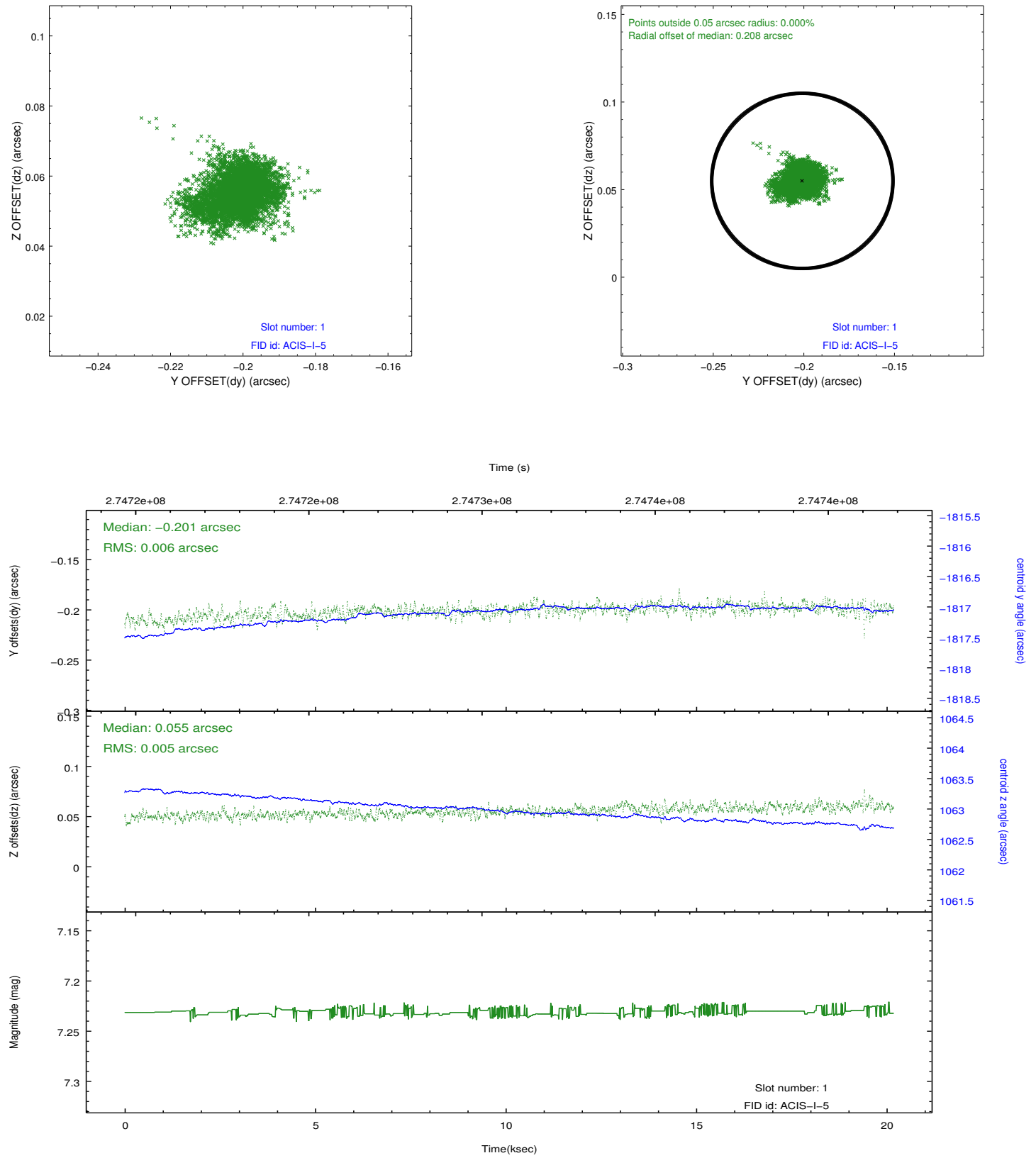


## 2.5 FID Slots

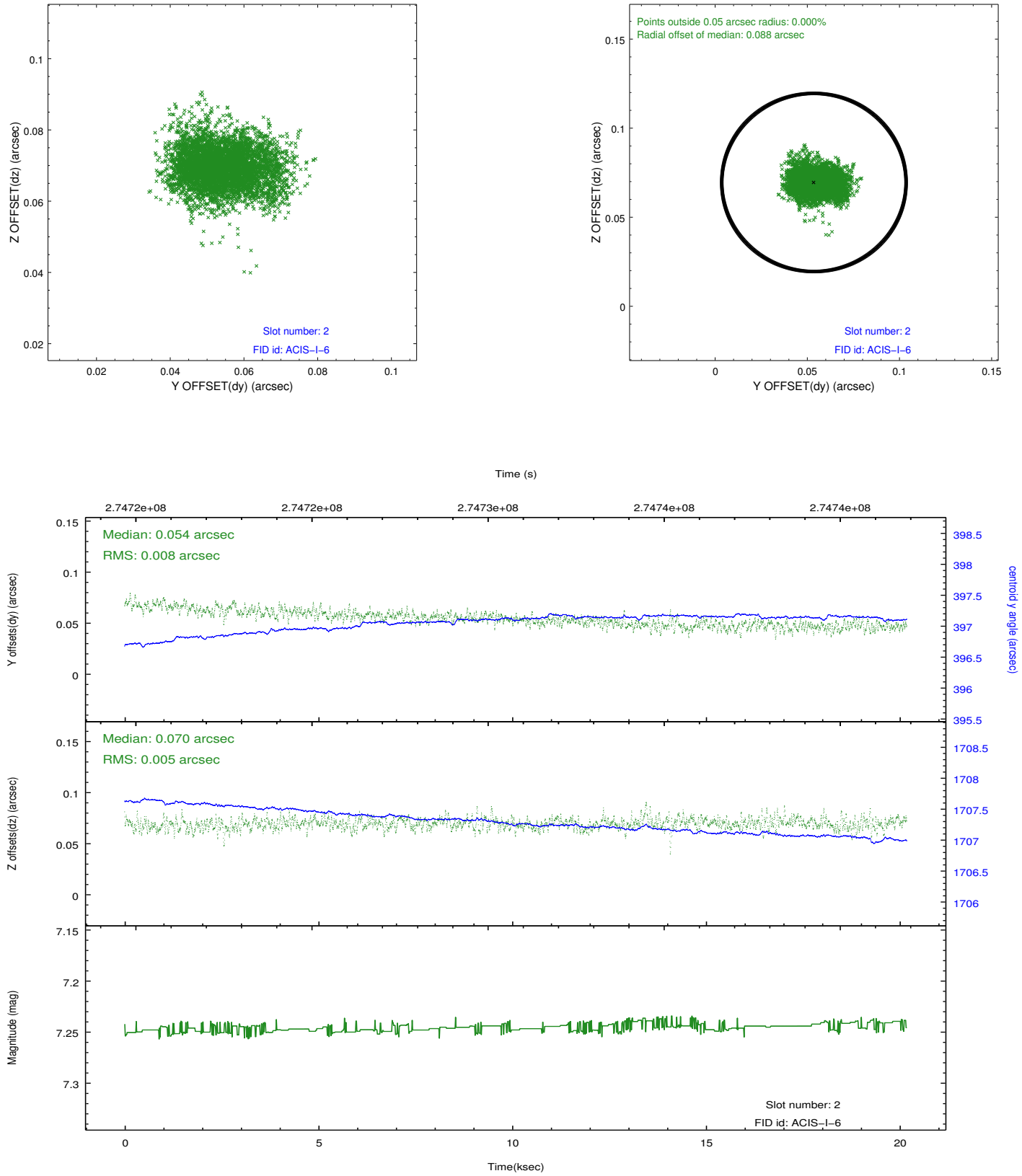
### 2.5.1 Slot 0



## 2.5.2 Slot 1



### 2.5.3 Slot 2



## A Summary

### A.1 Status

V&V Scientist	Beth Sundheim
V&V Date (YYYY-MM-DD)	2012.04.09
V&V Edition	1
V&V Disposition and Status	OK
V&V Charge Time	20.1791999

### A.2 Comments