

V&V Reference Report

L2 ASCDS Version : 8.4.3.1

Observation 7008 - L2 Version 2
Chandra X-Ray Center

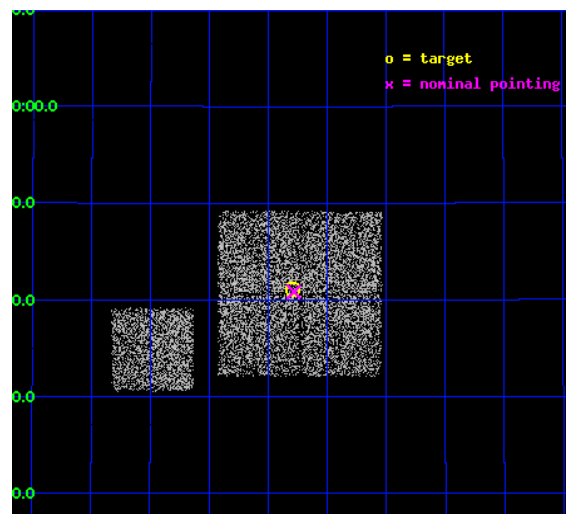
L2 Processing Date : Apr 7 2012

Contents

1	Front	2
2	OBI	3
2.1	OBI	3
2.1.1	Images	3
2.1.2	Bias	3
2.1.3	Parameters	4
2.1.4	Events	4
2.2	Compared Parameters	5
2.3	Aspect	6
2.4	Star Slots	9
2.4.1	Slot 3	9
2.4.2	Slot 4	10
2.4.3	Slot 5	11
2.4.4	Slot 6	12
2.4.5	Slot 7	13
2.5	FID Slots	14
2.5.1	Slot 0	14
2.5.2	Slot 1	15
2.5.3	Slot 2	16
A	Summary	17
A.1	Status	17
A.2	Comments	17

1 Front

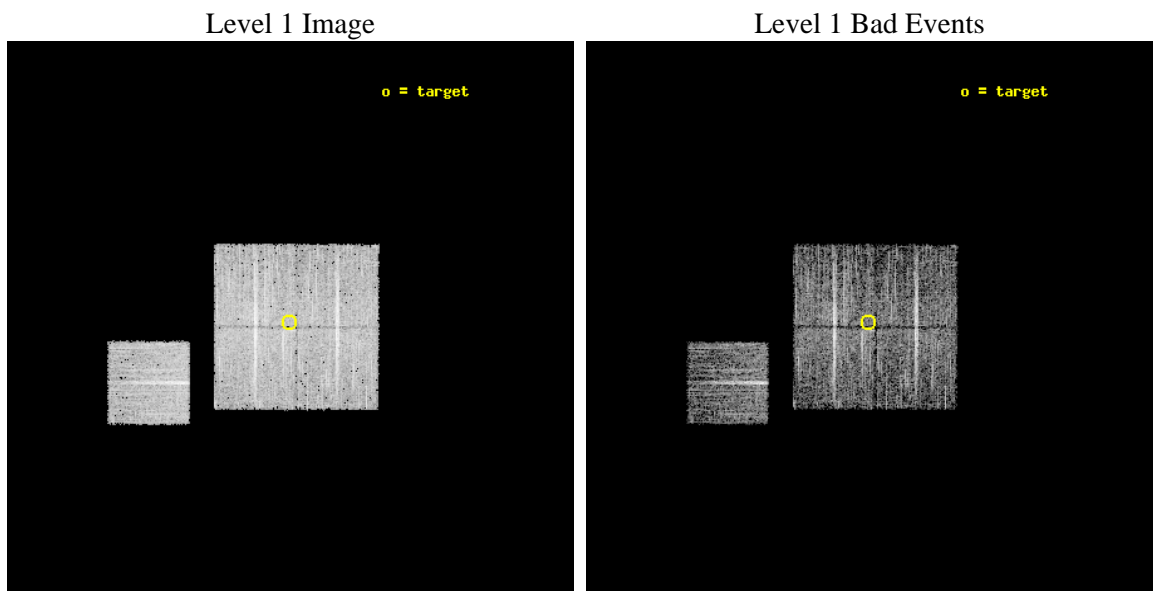
seq_num	900424	Sequence number
obs_id	7008	Observation id
title	Chandra Large Scale Survey of the NOAO Bootes Deep Field (A)	Propo
observer	Dr Stephen Murray	Principal investigator
object	Bootes2 30	Source name
dtcycle	0	
cycle	P	events from which exps? Prim/Second/Both
ra_targ	216.9477	Observer's specified target RA [deg]
dec_targ	34.685064	Observer's specified target Dec [deg]
ra_nom	216.94550887581	Nominal RA [deg]
dec_nom	34.680865708052	Nominal Dec [deg]
roll_nom	270.21000709251	Nominal Roll [deg]
revision	2	Processing version of data
ontime	4882.5000375509	Sum of GTIs [s]
livetime	4818.7065801161	Livetime [s]
ontime0	4882.5000375509	Sum of GTIs [s]
ontime1	4882.5000375509	Sum of GTIs [s]
ontime2	4882.5000375509	Sum of GTIs [s]
ontime3	4882.5000375509	Sum of GTIs [s]
ontime6	4882.5000375509	Sum of GTIs [s]
l2events	13794	Number of level 2 events



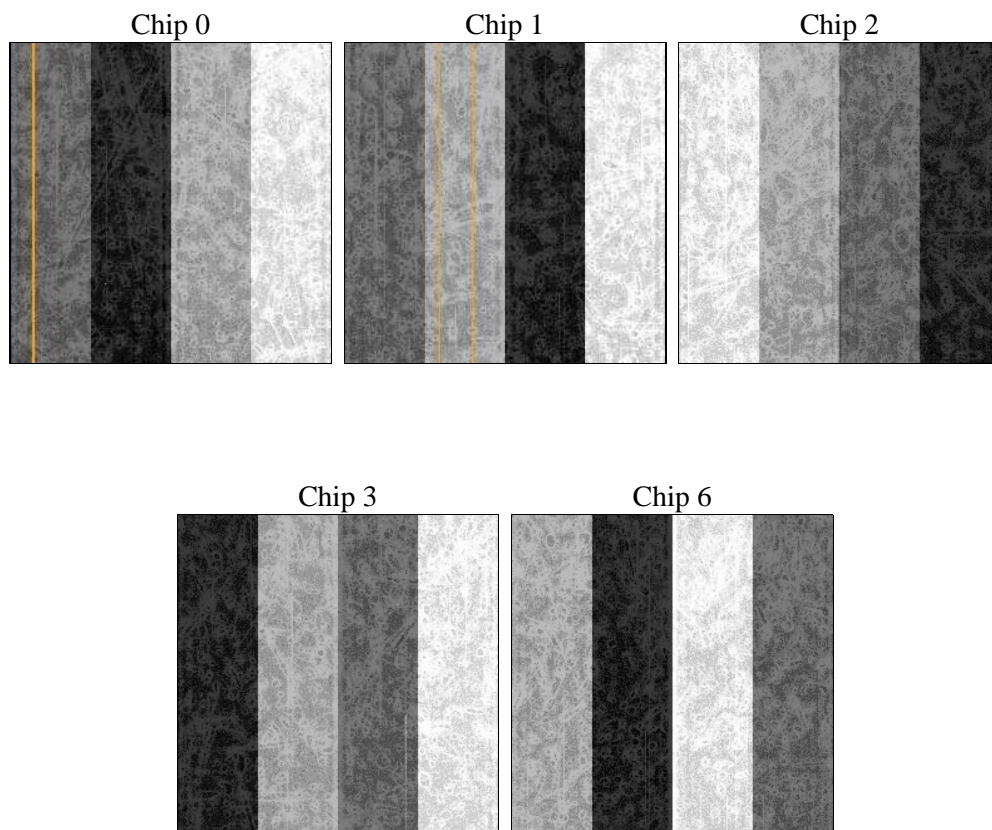
2 OBI

2.1 OBI

2.1.1 Images



2.1.2 Bias



2.1.3 Parameters

obi_num	0	Obi number	sched_exp_time	4700.000000	[s] Scheduled observation exposure time
ascdsver	8.4.3.1	Processing system revision	ontime	4882.5000375509	Sum of GTIs [s]
caldsver	4.4.9	 	ontime0	4882.5000375509	Sum of GTIs [s]
date	2012-04-07T09:04:11	Date and time of file creation	ontime1	4882.5000375509	Sum of GTIs [s]
revision	2	Processing version of data	ontime2	4882.5000375509	Sum of GTIs [s]
			ontime3	4882.5000375509	Sum of GTIs [s]
			ontime6	4882.5000375509	Sum of GTIs [s]
			l1events	218984	Number of level 1 events

2.1.4 Events

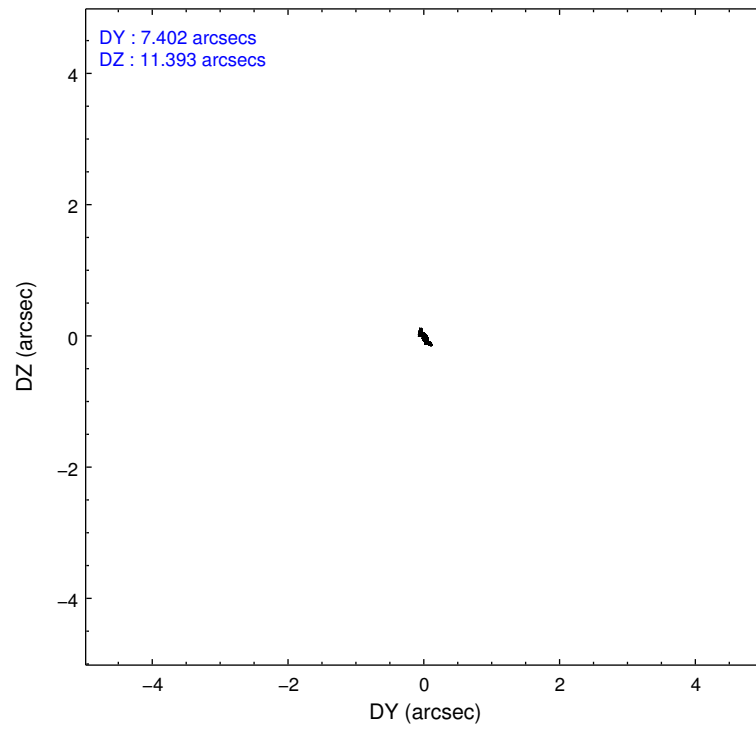
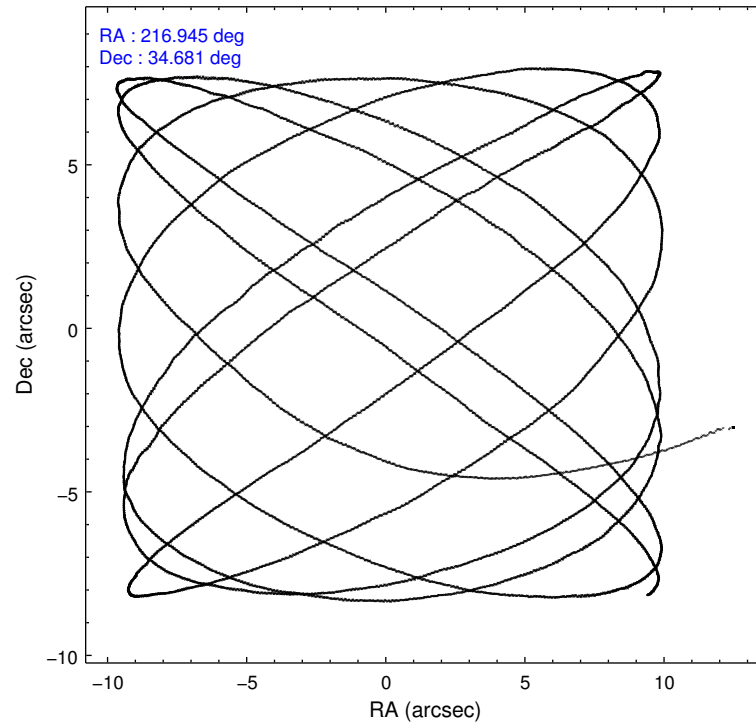
	ccd 0	ccd 1	ccd 2	ccd 3	ccd 6
level 1 events	41859	40245	46496	46142	44242
rejected events	38580	36737	43157	42864	40793
rejected %	92%	91%	92%	92%	92%

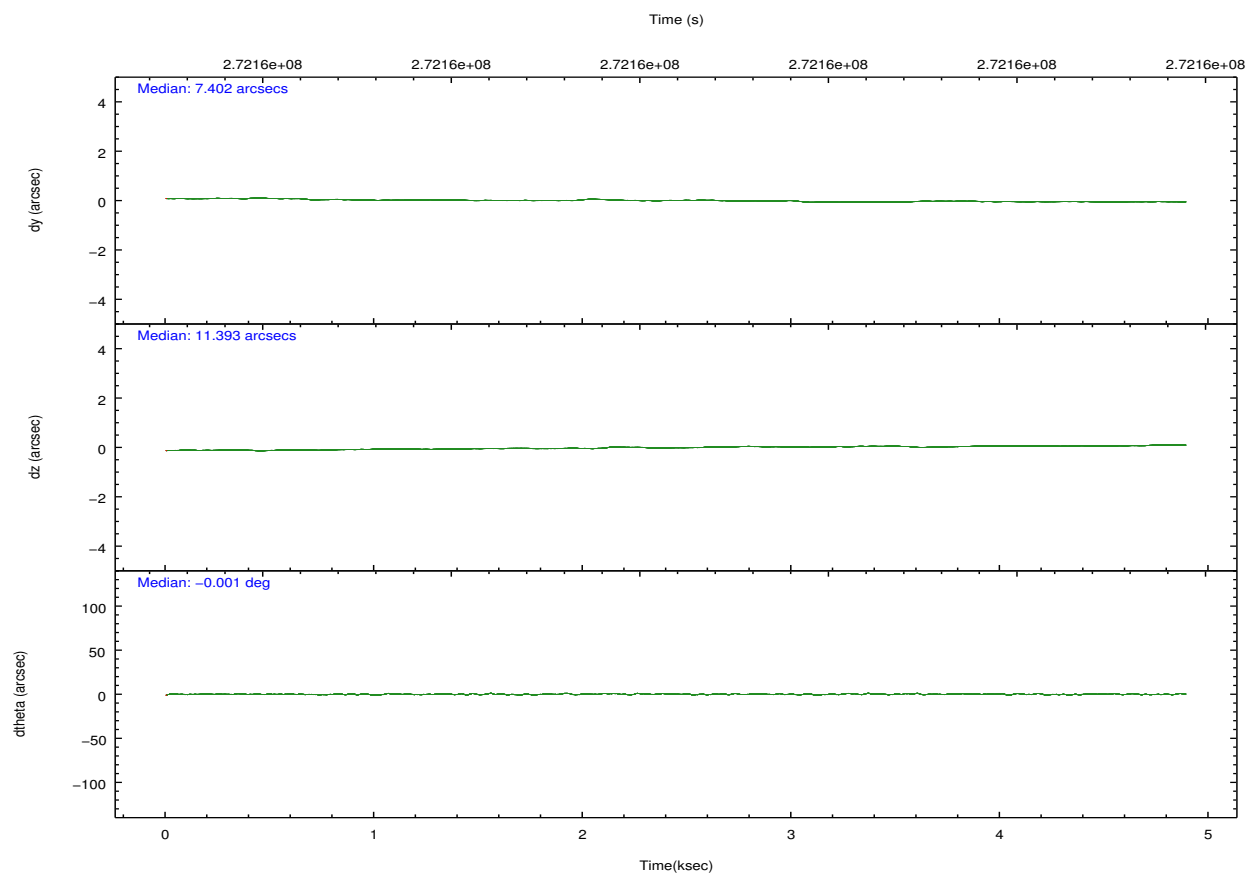
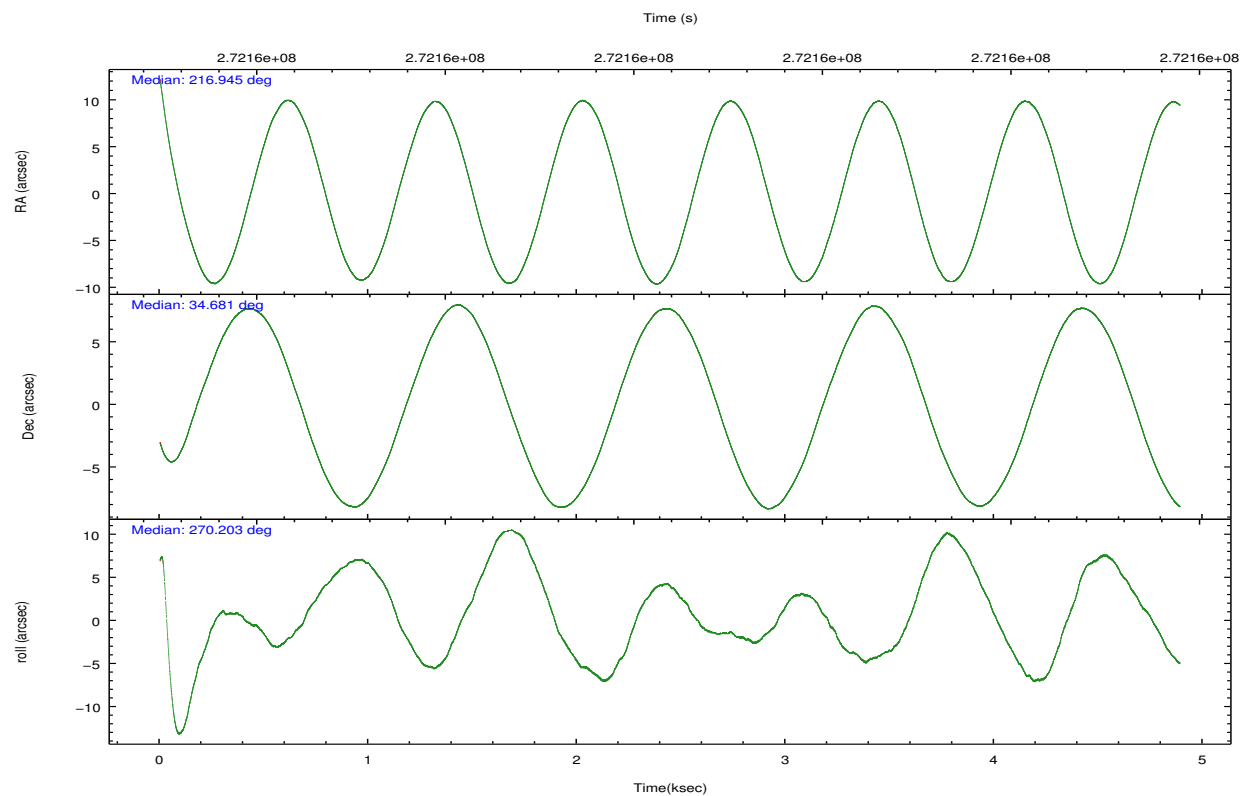
	ccd 0	ccd 1	ccd 2	ccd 3	ccd 6
grade 0 events	1479	1521	1547	1475	1576
	3%	3%	3%	3%	3%
grade 1 events	22	19	26	20	18
	0%	0%	0%	0%	0%
grade 2 events	960	985	943	855	921
	2%	2%	2%	1%	2%
grade 3 events	443	499	462	444	475
	1%	1%	0%	0%	1%
grade 4 events	445	519	483	441	475
	1%	1%	1%	0%	1%
grade 5 events	1225	1365	1199	1392	1435
	2%	3%	2%	3%	3%
grade 6 events	767	853	693	823	845
	1%	2%	1%	1%	1%
grade 7 events	36518	34484	41143	40692	38497
	87%	85%	88%	88%	87%

2.2 Compared Parameters

Parameter	Planned	Actual	Parameter	Planned	Actual
Instrument	ACIS	ACIS	Obspar format version number	7	7
Detector	ACIS-01236	ACIS-01236	Obspar file type	PREDICTED	ACTUAL
Grating	NONE	NONE	Obspar update status	NONE	UPDATED
Data mode	VFAINT	VFAINT	Number of optional ACIS chips dropped	0	0
Observation mode	POINTING	POINTING	On-chip summing requested	N	N
[deg] Pointing RA	216.928637	216.9455088758089	Subarray requested	NONE	NONE
[deg] Pointing Dec	34.704427	34.68086570805218	Alternating exposures requested	N	N
[deg] Pointing Roll	270.010854	270.2100070925051	[s] Primary exposure time	0.000000	3.1
[mm] SIM focus pos	-0.782348	-0.7809083437167272			
[mm] SIM defocus	0	0.001439871863259334			
[mm] SIM translation stage pos	-233.592463	-233.5874344608287			
[mm] SIM translation stage offset	0	-0.005018542100998502			
[s] Observation start time (MET)	272155939.184000	272154360.37161			
Observation start date	2006-08-16T22:51:14	2006-08-16T22:26:00			
[s] Observation end time (MET)	272160639.184000	272160773.28441			
Observation end date	2006-08-17T00:09:34	2006-08-17T00:12:53			
Read mode	TIMED	TIMED			

2.3 Aspect



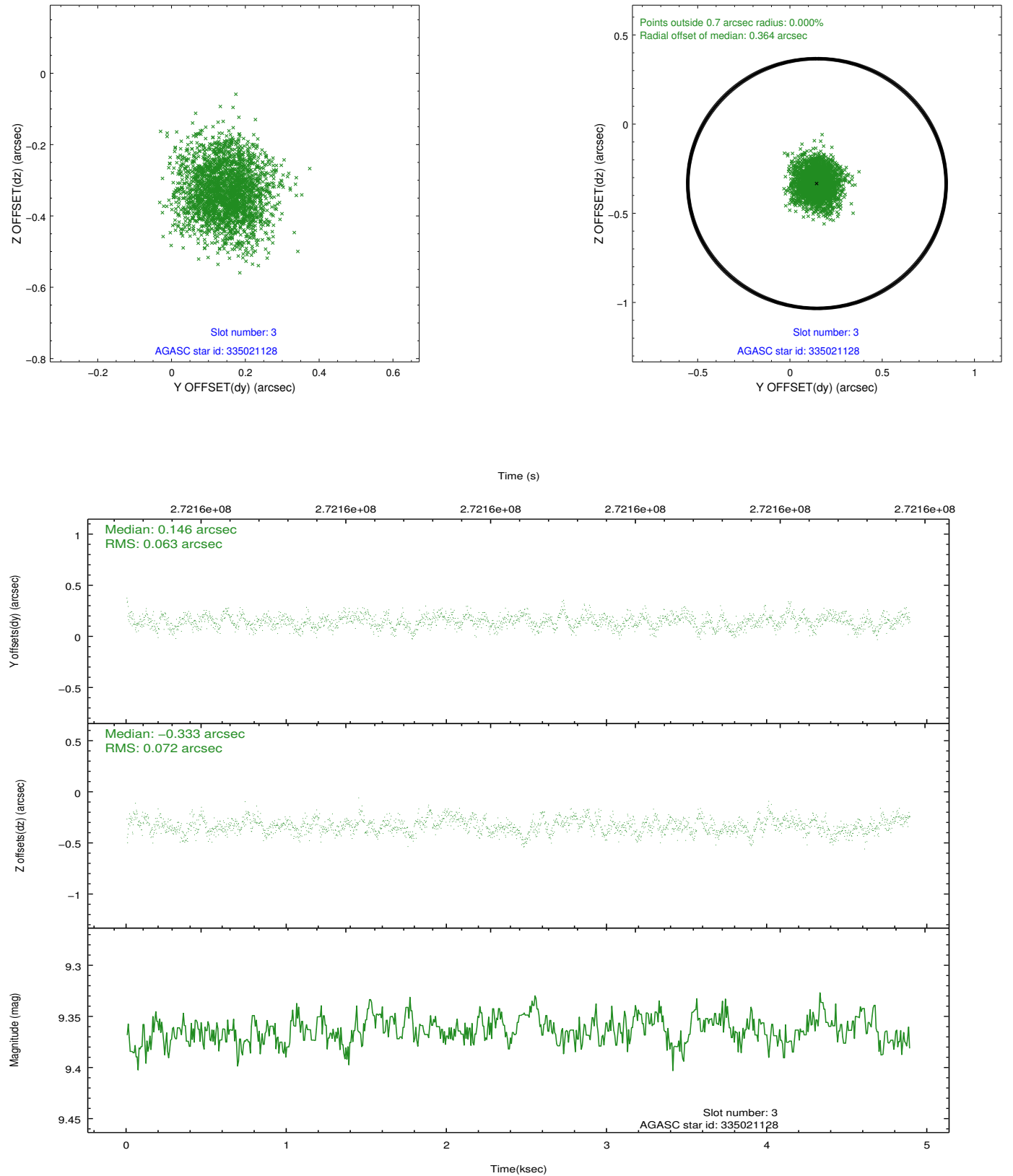


Slot Statistics

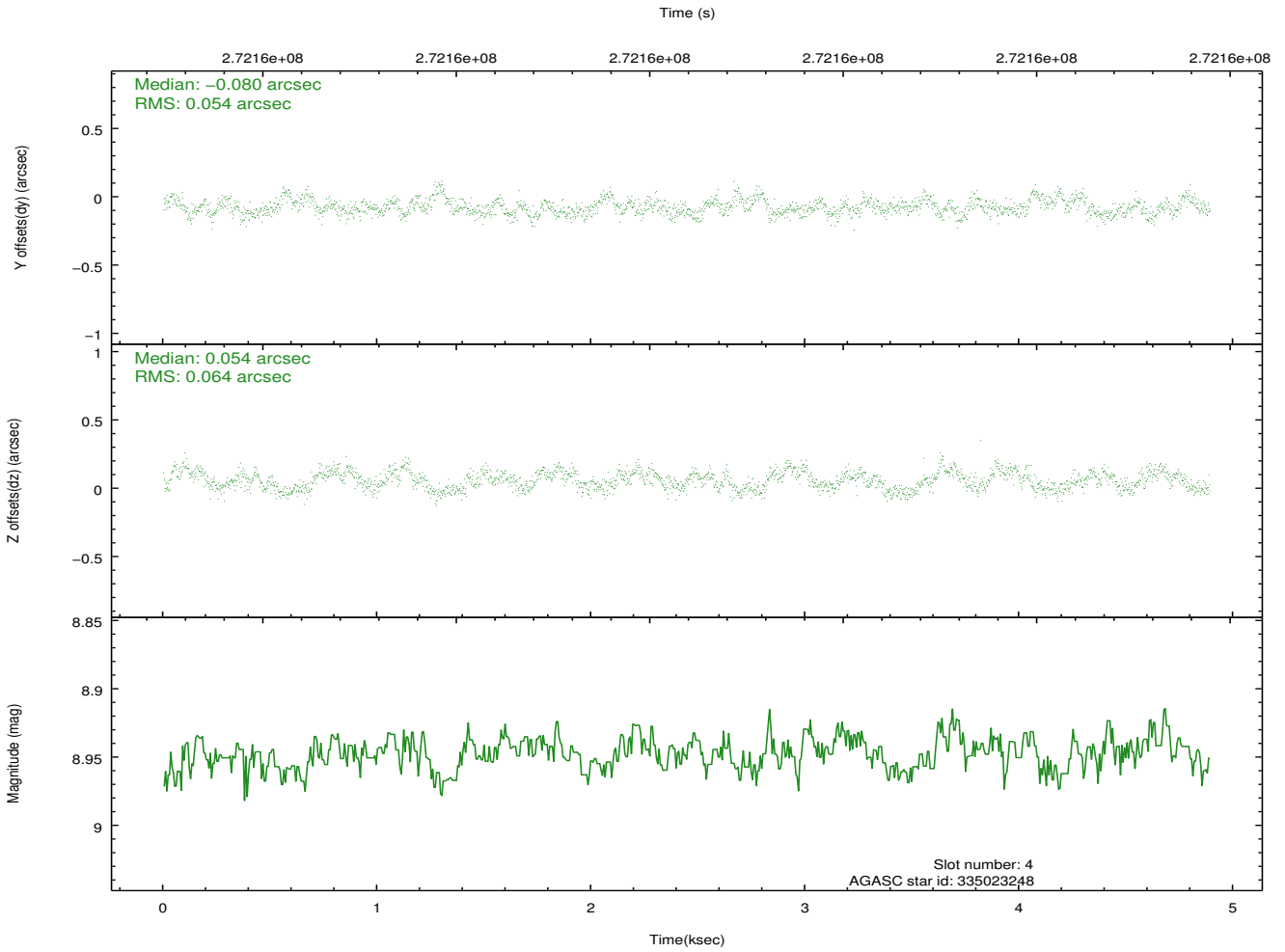
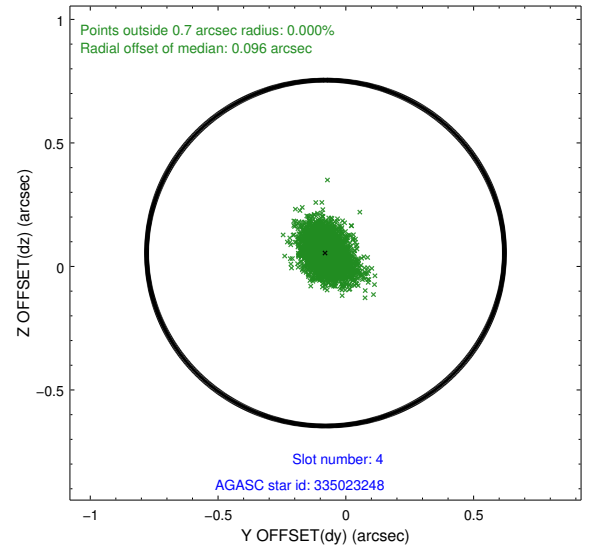
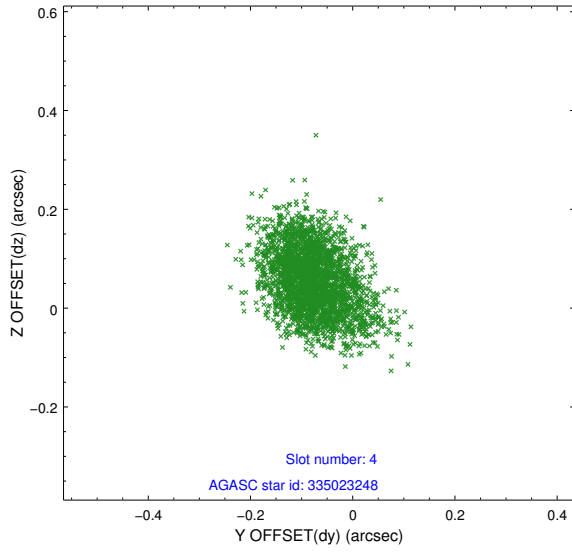
slot	status	id	mag	n_pts	med_dy	med_dz	dr1	dr2	ra	dec	mean_y	mean_z
0	FID	ACIS-I-1	7.24	1193	0.051	-0.055	0.007	0.011	0.000000	0.000000	932.31	-834.95
1	FID	ACIS-I-5	7.23	1193	-0.168	0.059	0.007	0.012	0.000000	0.000000	-1815.30	1062.07
2	FID	ACIS-I-6	7.24	1193	0.026	0.067	0.007	0.012	0.000000	0.000000	396.51	1707.96
3	GUIDE	335021128	9.36	2382	0.146	-0.333	0.101	0.161	216.159551	34.422539	1006.41	-2283.88
4	GUIDE	335023248	8.95	2384	-0.080	0.054	0.089	0.144	217.634832	34.944512	-870.88	2083.50
5	GUIDE	335028336	9.46	2383	-0.037	0.159	0.089	0.150	217.189840	34.665629	138.62	774.83
6	GUIDE	335415168	9.79	2383	-0.075	0.137	0.142	0.236	217.681296	35.301767	-2158.53	2211.58
7	GUIDE	335417968	9.39	2381	0.038	-0.013	0.093	0.149	217.358149	35.055285	-1266.29	1267.17

2.4 Star Slots

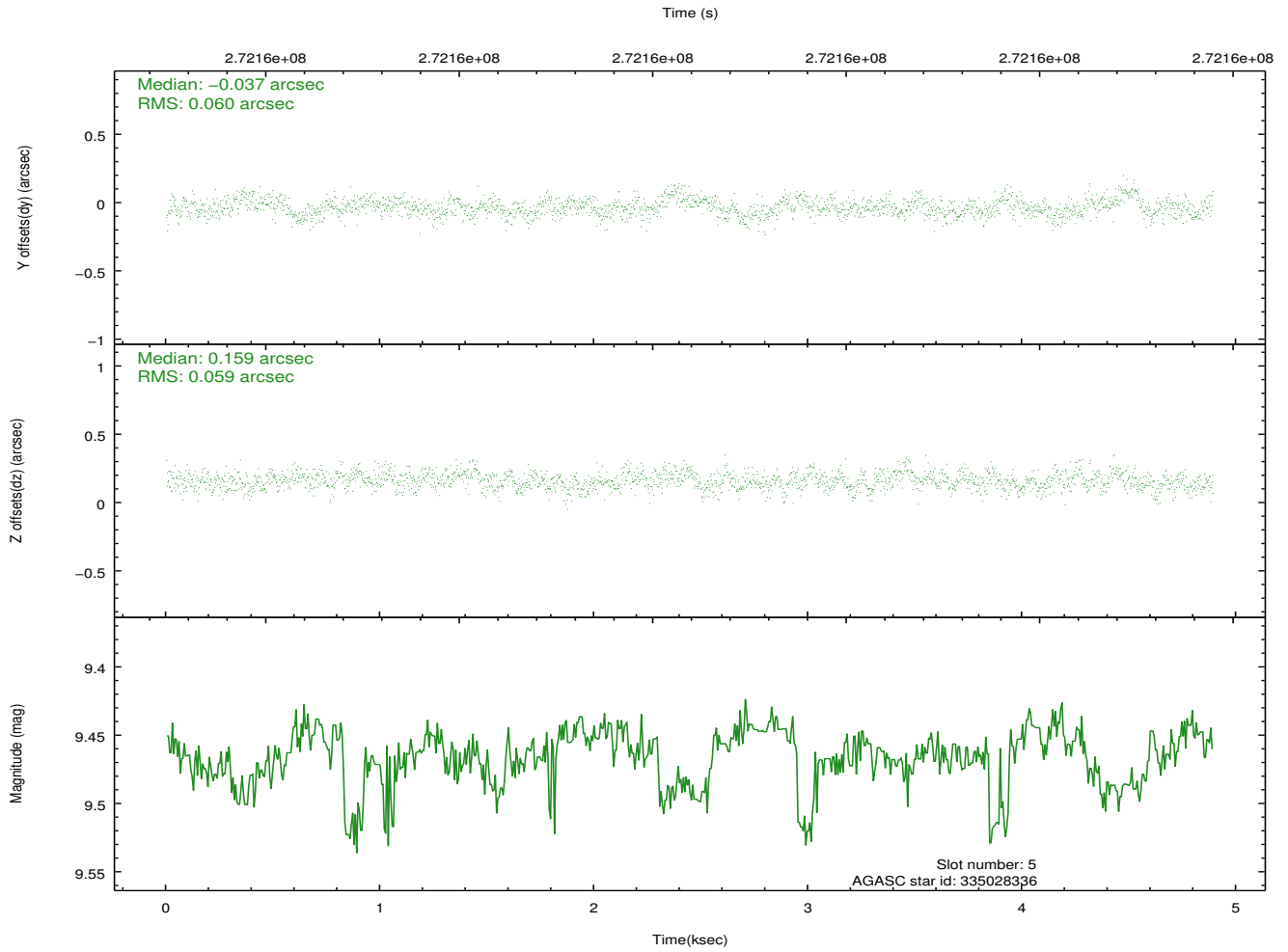
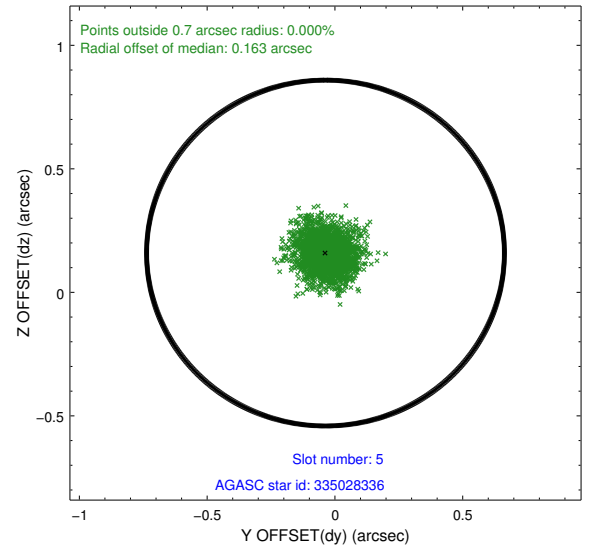
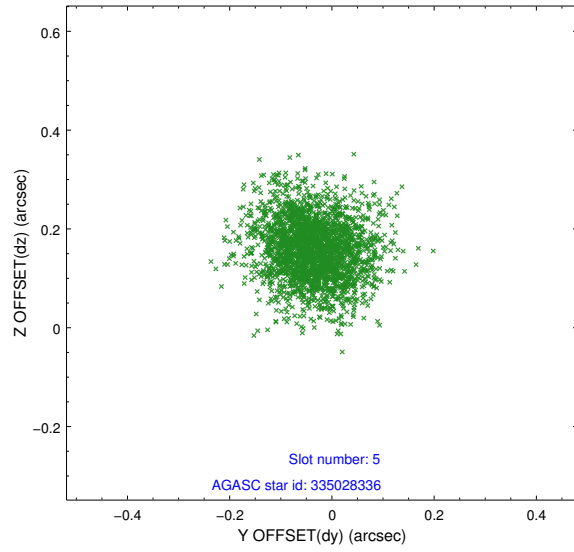
2.4.1 Slot 3



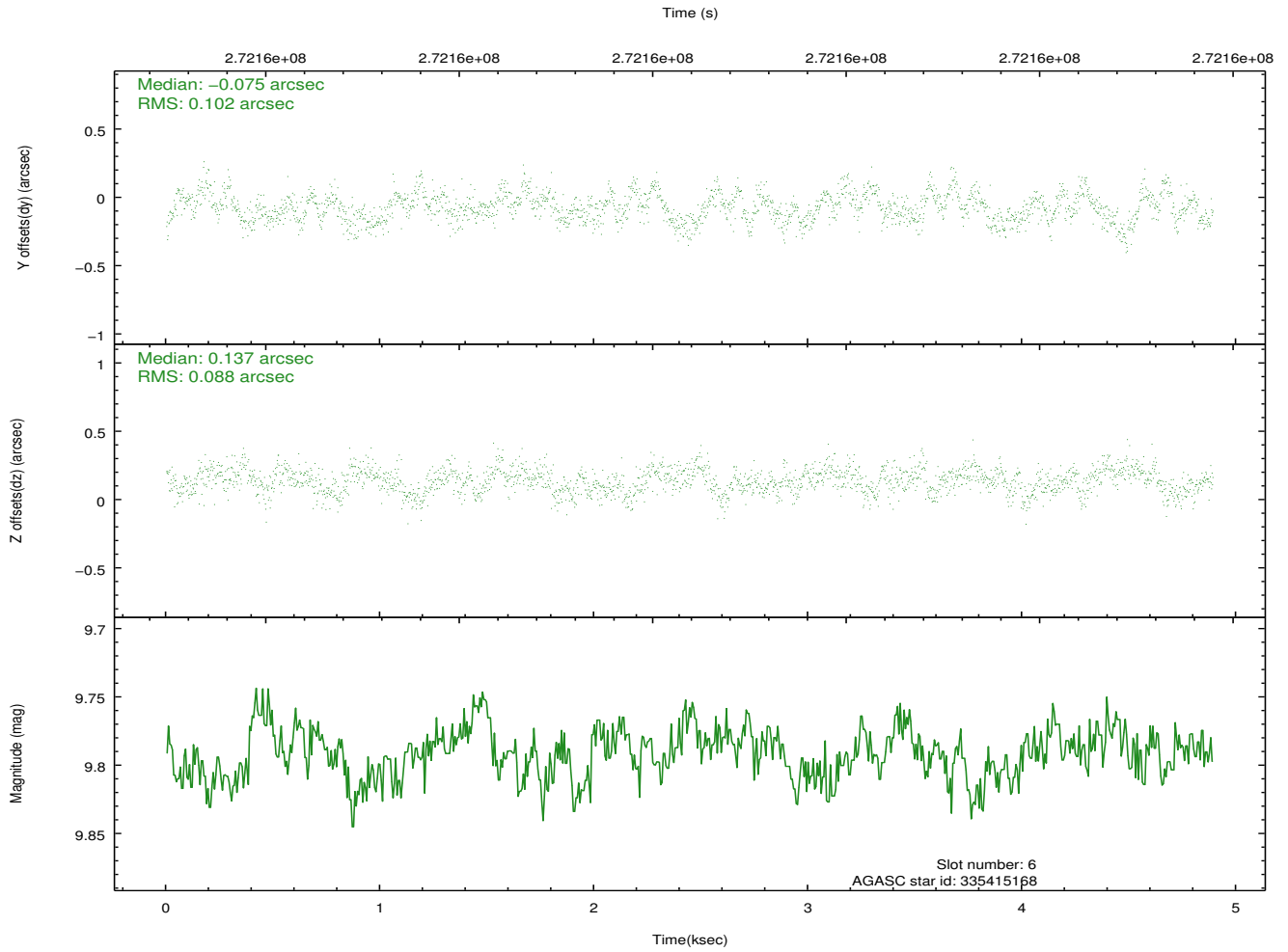
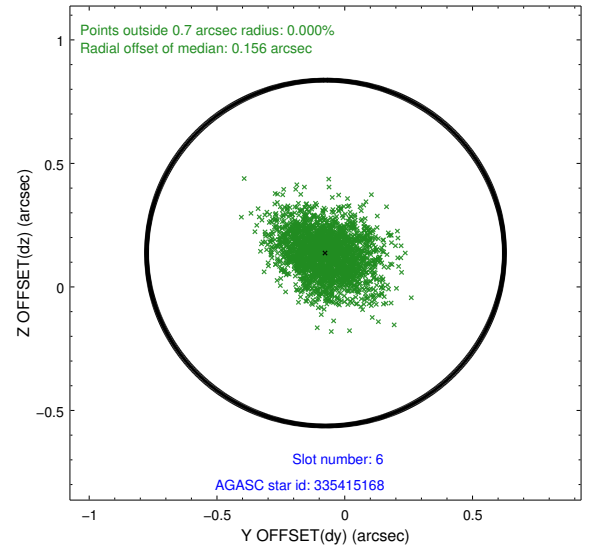
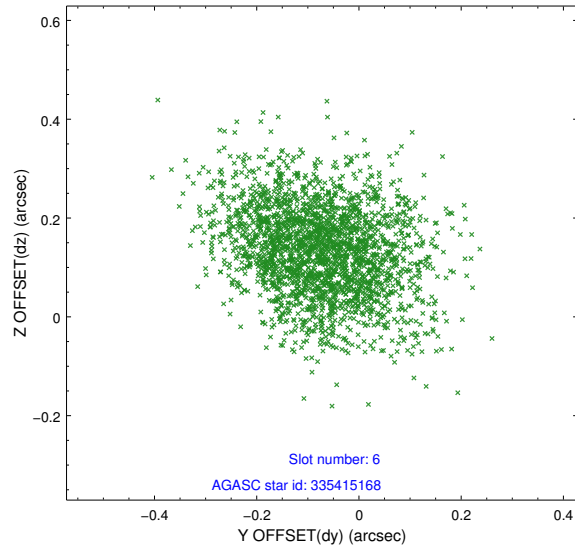
2.4.2 Slot 4



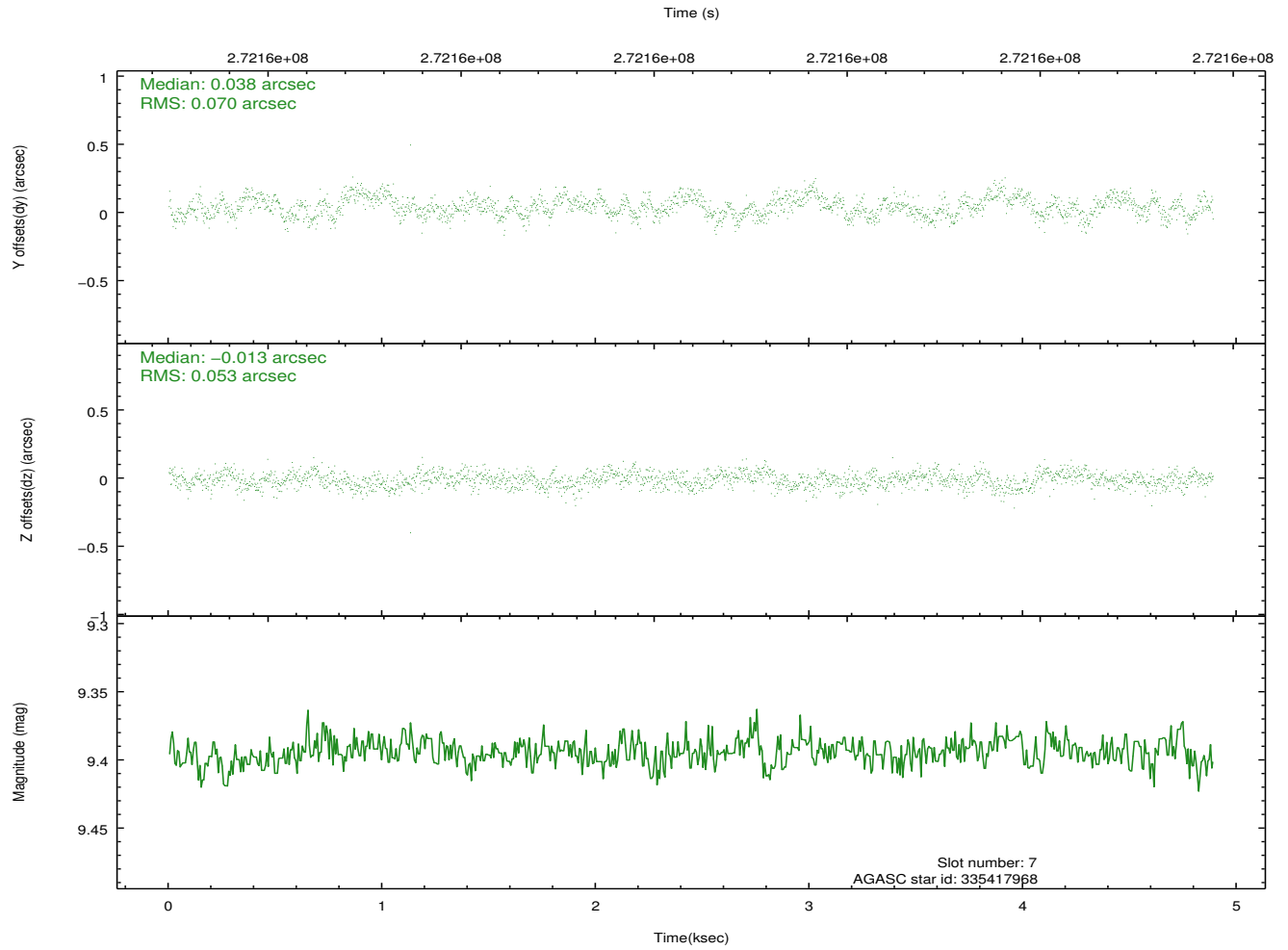
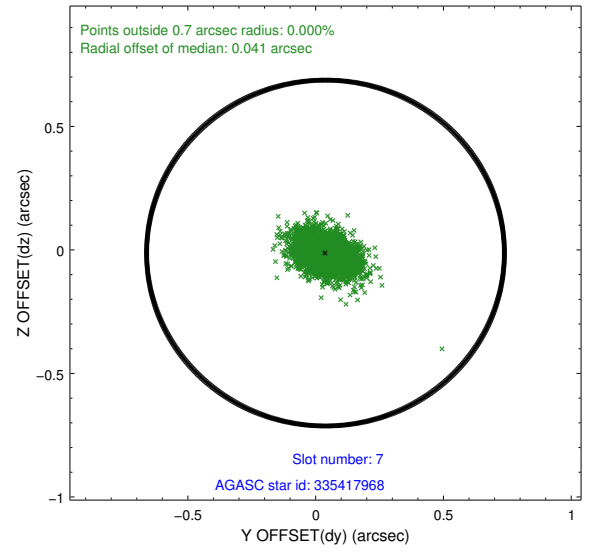
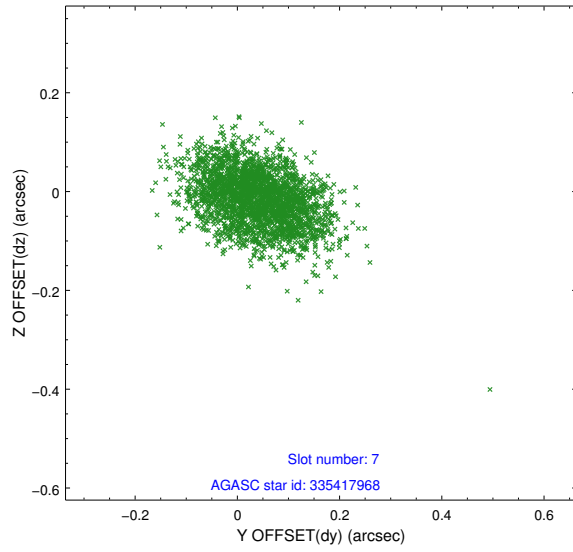
2.4.3 Slot 5



2.4.4 Slot 6

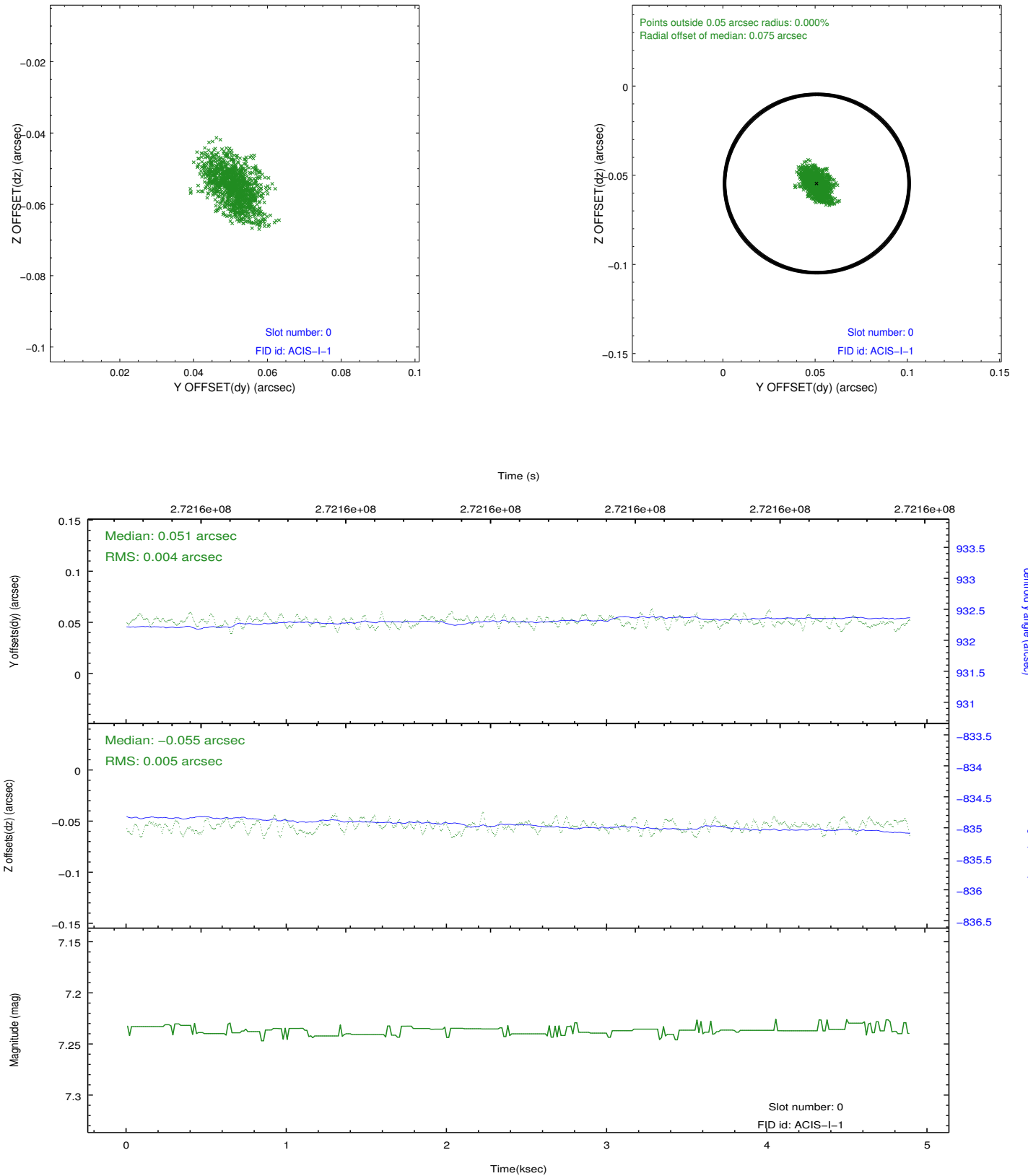


2.4.5 Slot 7

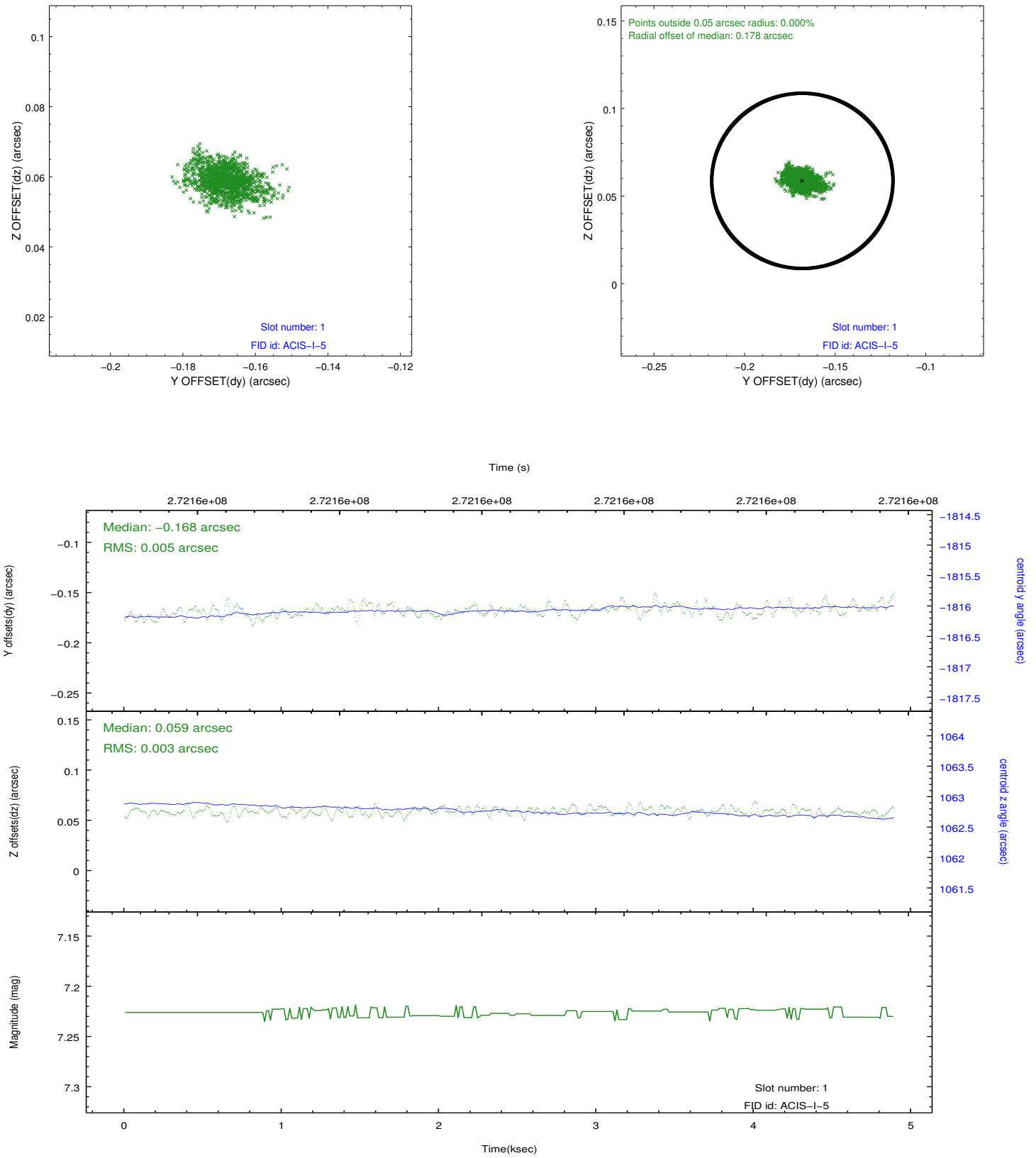


2.5 FID Slots

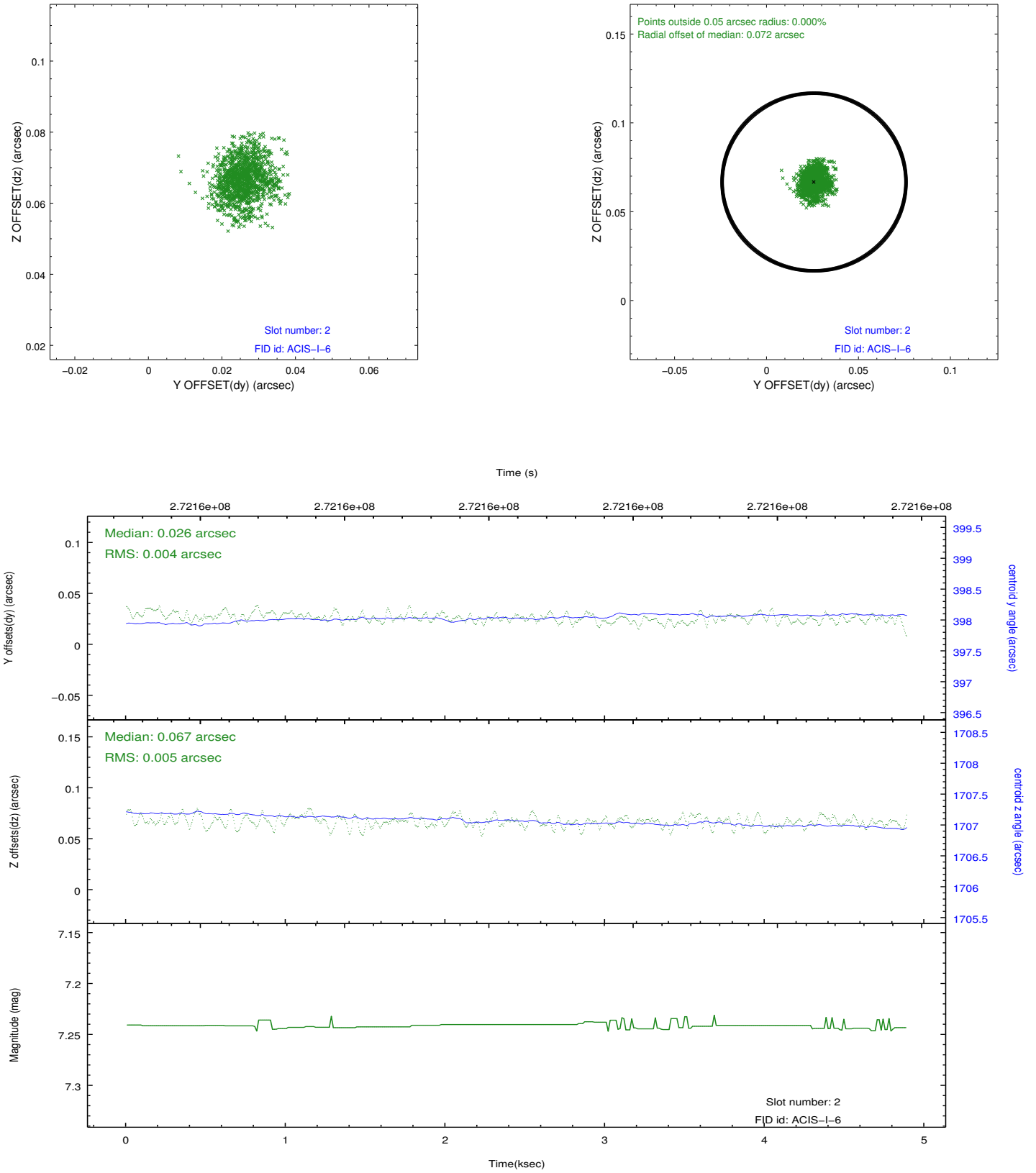
2.5.1 Slot 0



2.5.2 Slot 1



2.5.3 Slot 2



A Summary

A.1 Status

V&V Scientist	Jen Lauer
V&V Date (YYYY-MM-DD)	2012.04.08
V&V Edition	1
V&V Disposition and Status	OK
V&V Charge Time	4.88250003

A.2 Comments