

V&V Reference Report

L2 ASCDS Version : 8.5.1.1

Observation 6998 - L2 Version 3
Chandra X-Ray Center

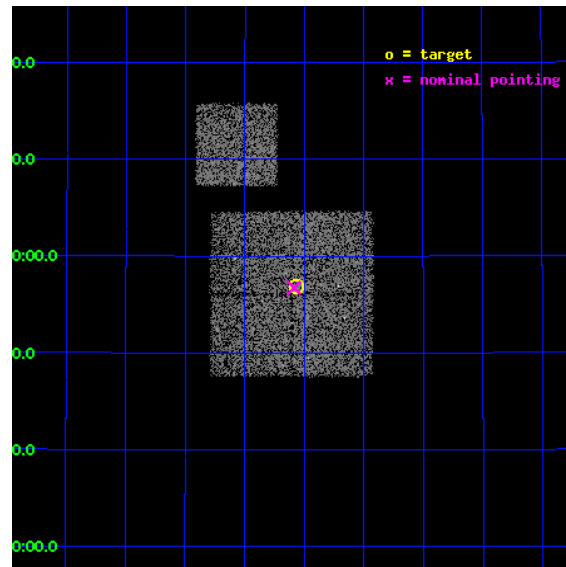
L2 Processing Date : Dec 31 2012

Contents

1	Front	2
2	OBI	3
2.1	OBI	3
2.1.1	Images	3
2.1.2	Bias	3
2.1.3	Parameters	4
2.1.4	Events	4
2.2	Compared Parameters	5
2.3	Aspect	6
2.4	Star Slots	9
2.4.1	Slot 3	9
2.4.2	Slot 4	10
2.4.3	Slot 5	11
2.4.4	Slot 6	12
2.4.5	Slot 7	13
2.5	FID Slots	14
2.5.1	Slot 0	14
2.5.2	Slot 1	15
2.5.3	Slot 2	16
A	Summary	17
A.1	Status	17
A.2	Comments	17

1 Front

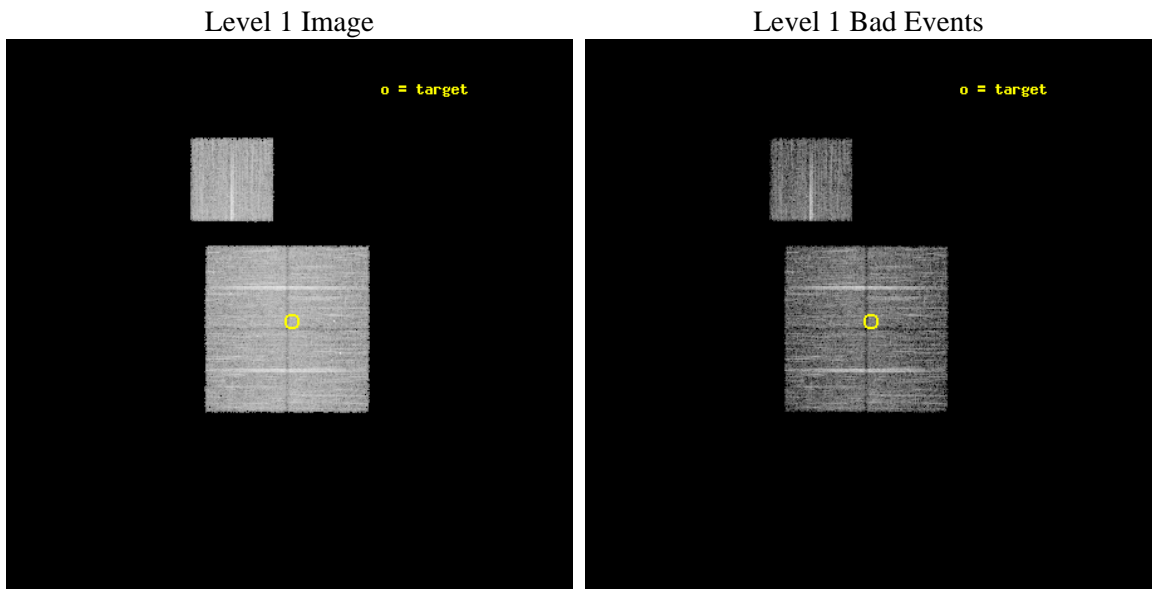
seq_num	900414	Sequence number
obs_id	6998	Observation id
title	Chandra Large Scale Survey of the NOAO Bootes Deep Field (A)	Propo
observer	Dr. Stephen Murray	Principal investigator
object	Bootes2 20	Source name
dtcycle	0	
cycle	P	events from which exps? Prim/Second/Both
ra_targ	217.516625	Observer's specified target RA [deg]
dec_targ	33.947389	Observer's specified target Dec [deg]
ra_nom	217.52183303514	Nominal RA [deg]
dec_nom	33.945560971154	Nominal Dec [deg]
roll_nom	0.20577094006487	Nominal Roll [deg]
revision	3	Processing version of data
ontime	9777.0303733647	Sum of GTIs [s]
livetime	9649.2862737916	Livetime [s]
ontime0	9770.6252730191	Sum of GTIs [s]
ontime1	9773.80730322	Sum of GTIs [s]
ontime2	9770.7073829174	Sum of GTIs [s]
ontime3	9777.0303733647	Sum of GTIs [s]
ontime6	9773.7252431214	Sum of GTIs [s]
l2events	24285	Number of level 2 events



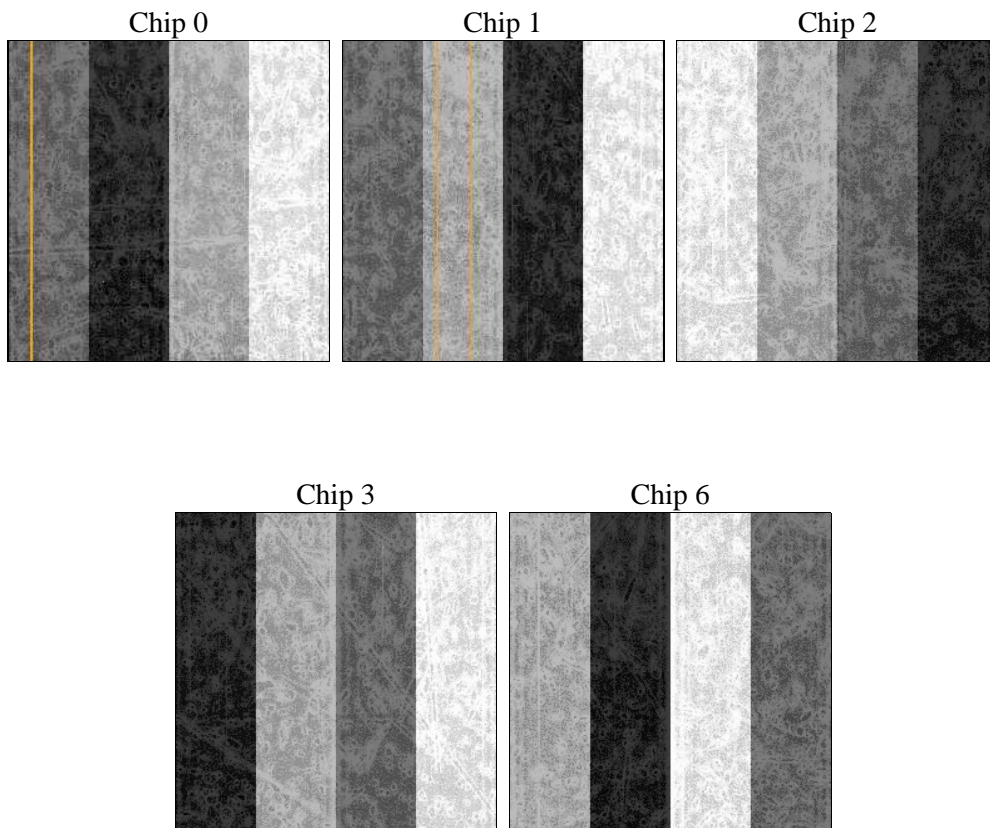
2 OBI

2.1 OBI

2.1.1 Images



2.1.2 Bias



2.1.3 Parameters

obi_num	0	Obi number	sched_exp_time	10000.000000	[s] Scheduled observation exposure time
ascdsver	8.5.1.1	Processing system revision	ontime	9777.0303733647	Sum of GTIs [s]
caldbver	4.5.5	 	ontime0	9770.6252730191	Sum of GTIs [s]
date	2012-12-31T09:48:12	Date and time of file creation	ontime1	9773.80730322	Sum of GTIs [s]
revision	3	Processing version of data	ontime2	9770.7073829174	Sum of GTIs [s]
			ontime3	9777.0303733647	Sum of GTIs [s]
			ontime6	9773.7252431214	Sum of GTIs [s]
			l1events	298479	Number of level 1 events

2.1.4 Events

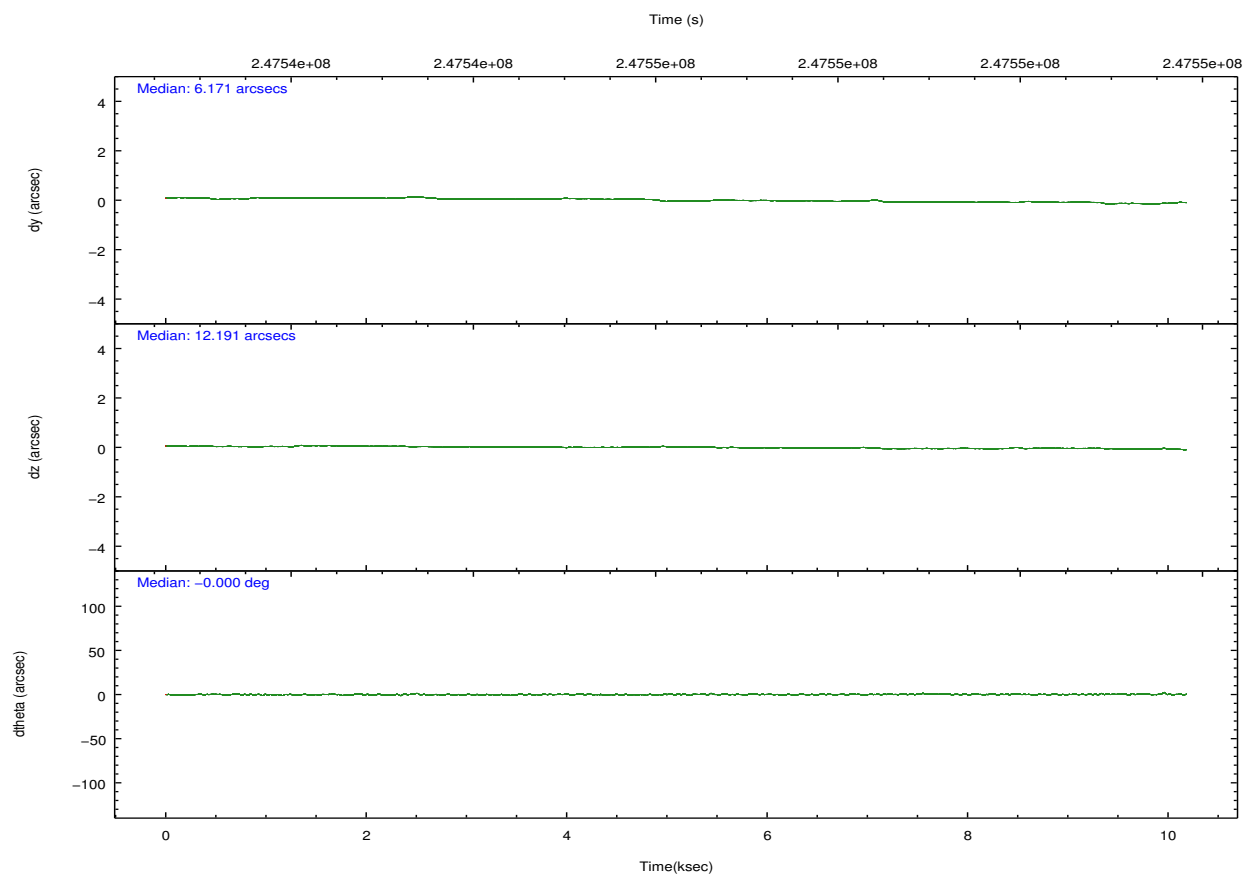
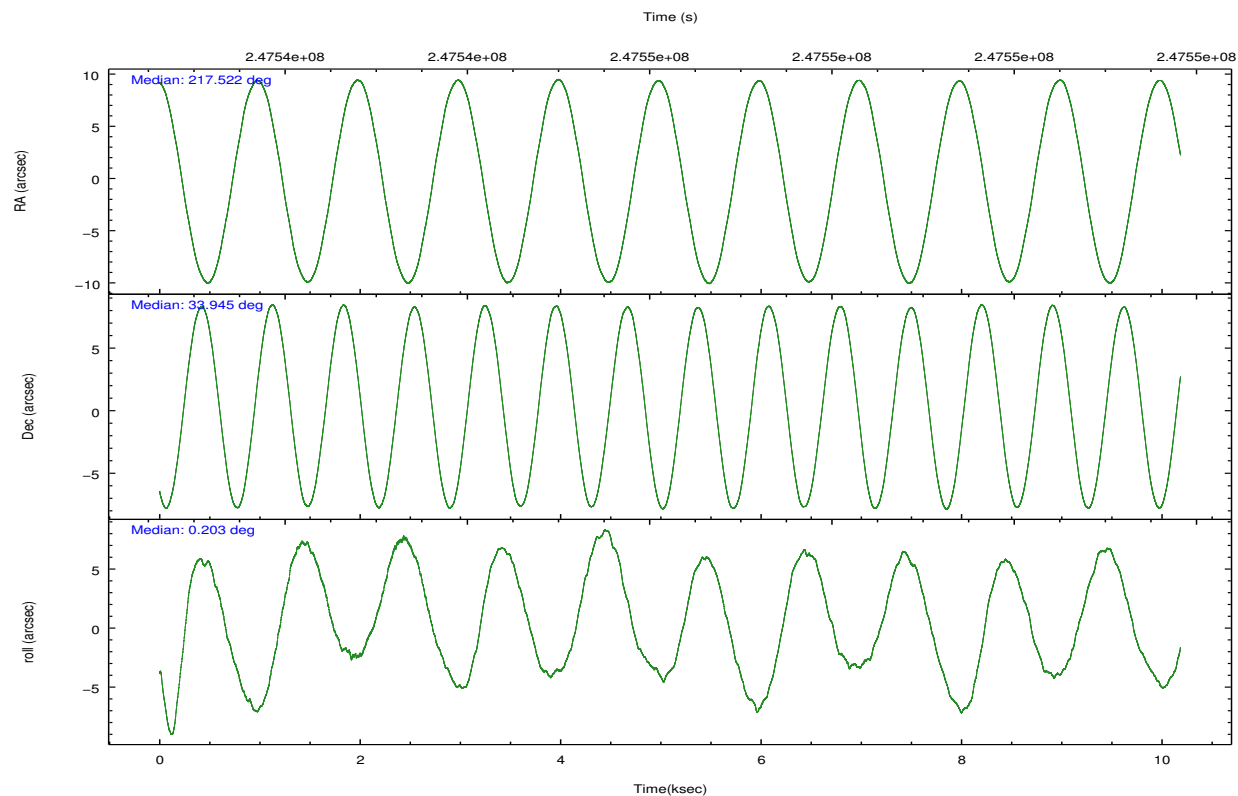
	ccd 0	ccd 1	ccd 2	ccd 3	ccd 6
level 1 events	58105	56105	65515	60216	58538
rejected events	52160	49851	59779	54448	52706
rejected %	89%	88%	91%	90%	90%

	ccd 0	ccd 1	ccd 2	ccd 3	ccd 6
grade 0 events	2125	2205	2175	2243	2088
	3%	3%	3%	3%	3%
grade 1 events	38	23	37	28	23
	0%	0%	0%	0%	0%
grade 2 events	1407	1356	1341	1192	1244
	2%	2%	2%	1%	2%
grade 3 events	701	742	580	668	700
	1%	1%	0%	1%	1%
grade 4 events	635	696	662	633	679
	1%	1%	1%	1%	1%
grade 5 events	1729	1942	1609	2041	2040
	2%	3%	2%	3%	3%
grade 6 events	1079	1256	981	1036	1123
	1%	2%	1%	1%	1%
grade 7 events	50391	47885	58130	52375	50641
	86%	85%	88%	86%	86%

2.2 Compared Parameters

Parameter	Planned	Actual	Parameter	Planned	Actual
Instrument	ACIS	ACIS	Obspar format version number	7	7
Detector	ACIS-01236	ACIS-01236	Obspar file type	PREDICTED	ACTUAL
Grating	NONE	NONE	Obspar update status	NONE	UPDATED
Data mode	VFAINT	VFAINT	Number of optional ACIS chips dropped	0	0
Observation mode	POINTING	POINTING	On-chip summing requested	N	N
[deg] Pointing RA	217.493319	217.5218330351355	Subarray requested	NONE	NONE
[deg] Pointing Dec	33.931718	33.94556097115371	Alternating exposures requested	N	N
[deg] Pointing Roll	0.013005	0.2057709400648673	[s] Primary exposure time	0.000000	3.1
[mm] SIM focus pos	-0.782348	-0.7809083437167272			
[mm] SIM defocus	0	0.001439871863259334			
[mm] SIM translation stage pos	-233.592463	-233.5874344608287			
[mm] SIM translation stage offset	0	-0.005018542100998502			
[s] Observation start time (MET)	247541320.184000	247540944.53852			
Observation start date	2005-11-05T01:27:36	2005-11-05T01:22:24			
[s] Observation end time (MET)	247551320.184000	247551454.3765			
Observation end date	2005-11-05T04:14:16	2005-11-05T04:17:34			
Read mode	TIMED	TIMED			

2.3 Aspect

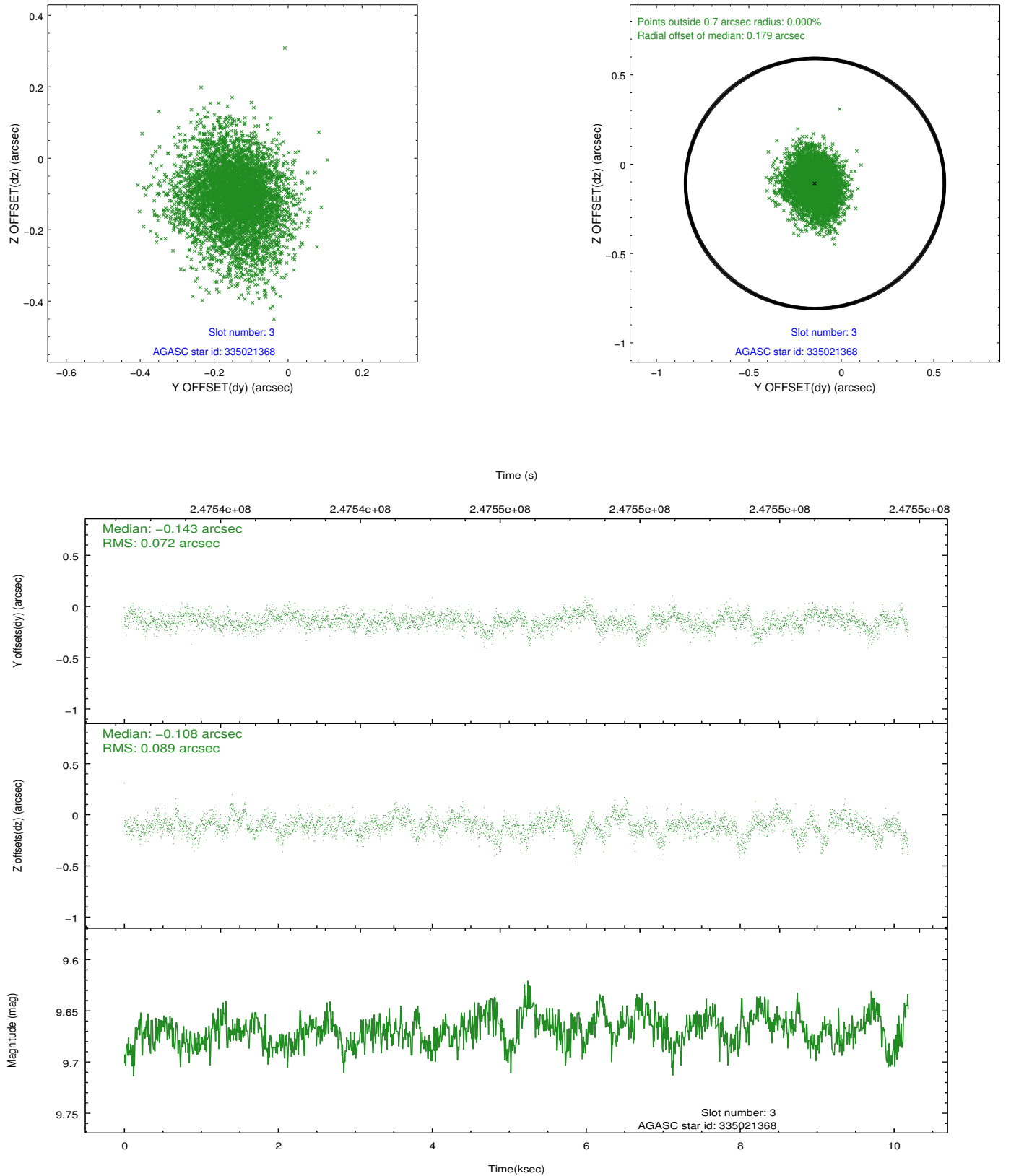


Slot Statistics

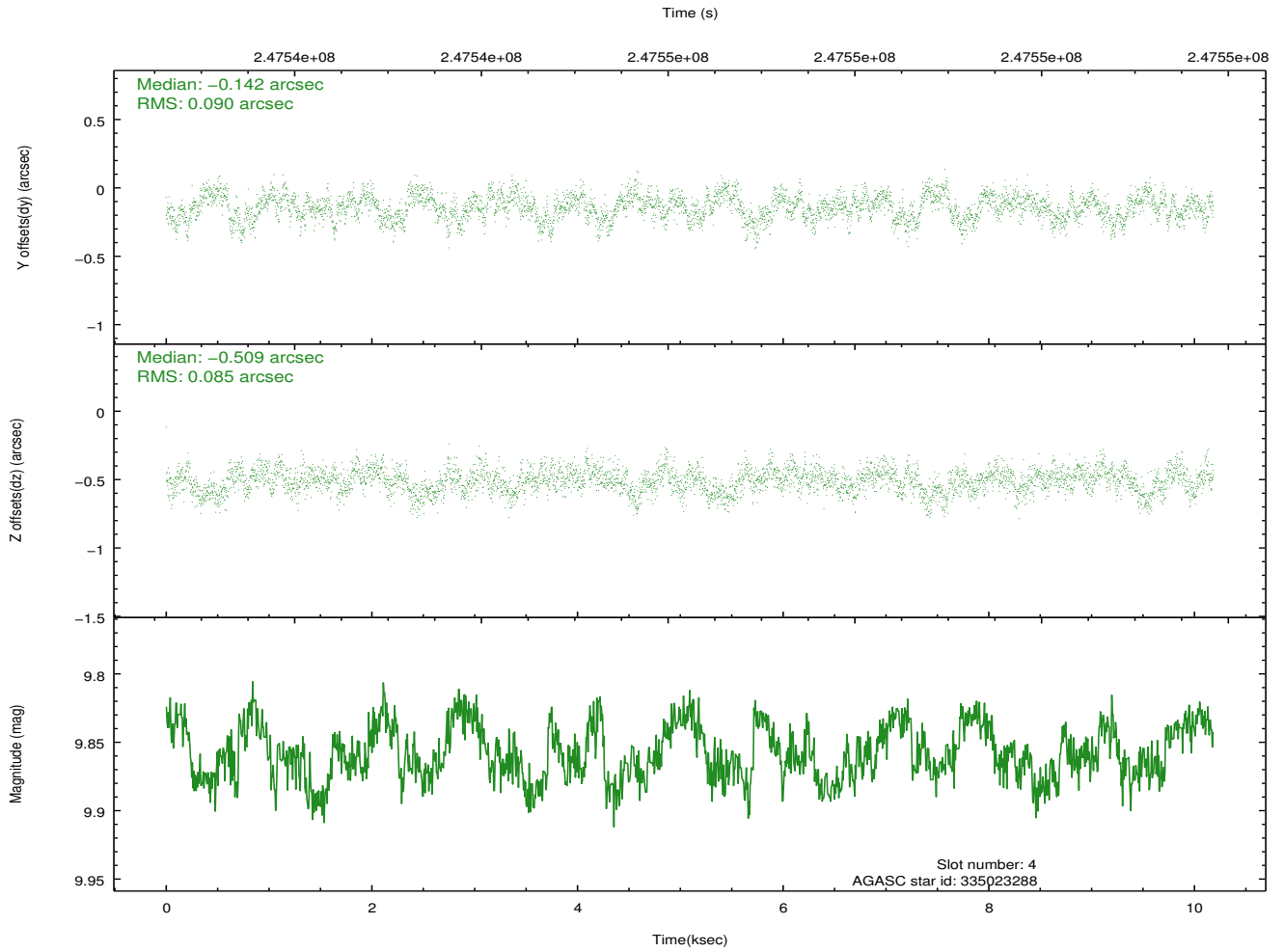
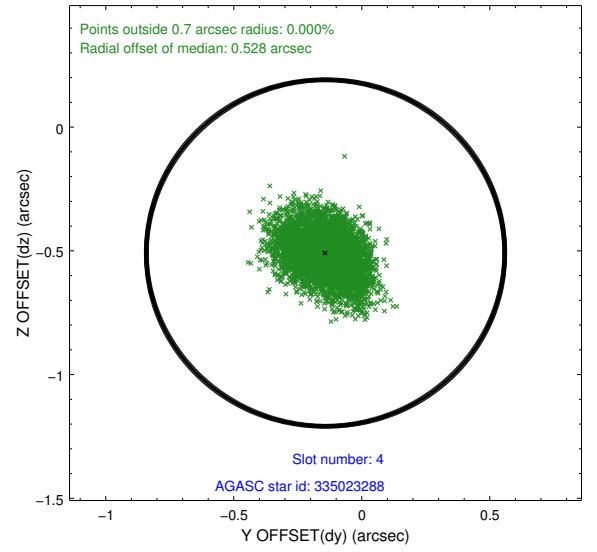
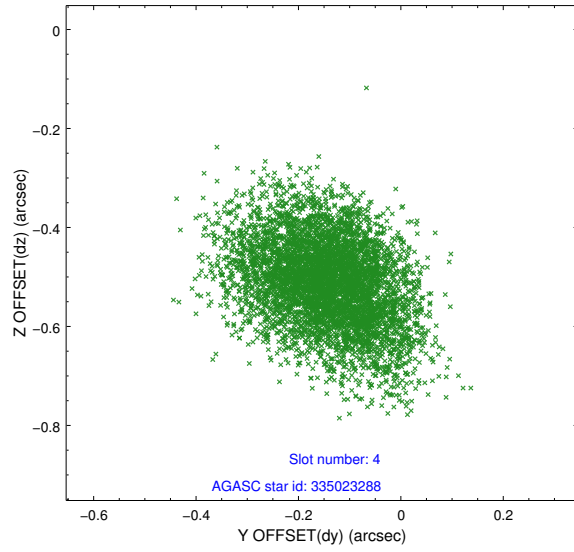
slot	status	id	mag	n_pts	med_dy	med_dz	dr1	dr2	ra	dec	mean_y	mean_z
0	FID	ACIS-I-1	7.24	2485	0.046	-0.004	0.006	0.011	0.000000	0.000000	933.55	-835.75
1	FID	ACIS-I-5	7.22	2485	-0.160	0.068	0.006	0.011	0.000000	0.000000	-1814.42	1061.63
2	FID	ACIS-I-6	7.25	2484	0.022	0.007	0.007	0.011	0.000000	0.000000	398.58	1706.60
3	GUIDE	335021368	9.67	4965	-0.143	-0.108	0.119	0.205	217.529643	33.934817	108.45	11.22
4	GUIDE	335023288	9.86	4960	-0.142	-0.509	0.132	0.214	217.791365	34.425735	885.40	1779.26
5	GUIDE	335025848	9.69	4967	0.090	0.321	0.141	0.223	217.530531	33.778292	111.62	-551.47
6	GUIDE	335028240	9.17	4965	0.320	0.171	0.087	0.143	216.746851	33.385009	-2244.22	-1959.26
7	GUIDE	335028696	9.16	4965	-0.121	0.127	0.088	0.143	217.260519	33.844112	-696.60	-314.56

2.4 Star Slots

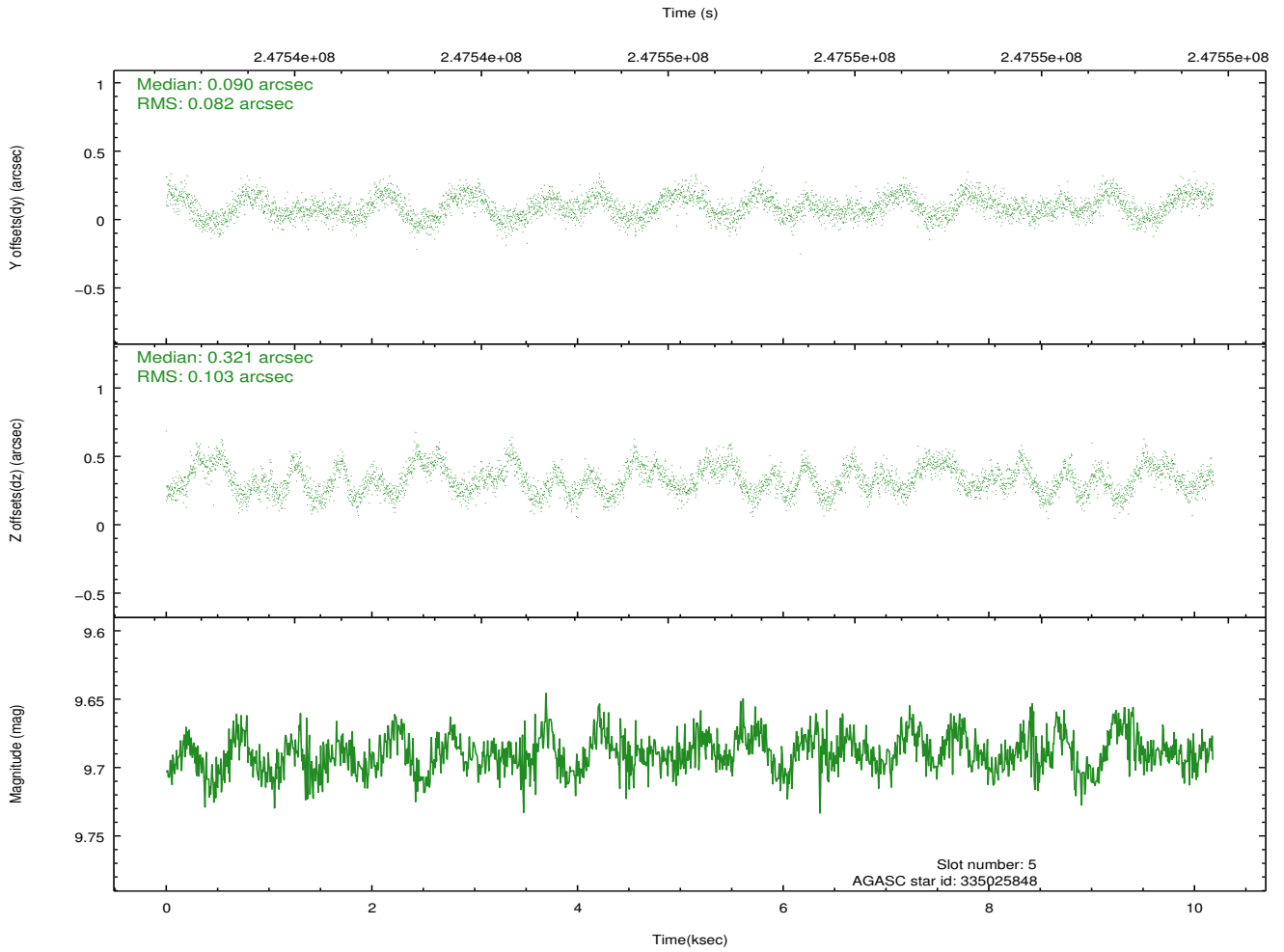
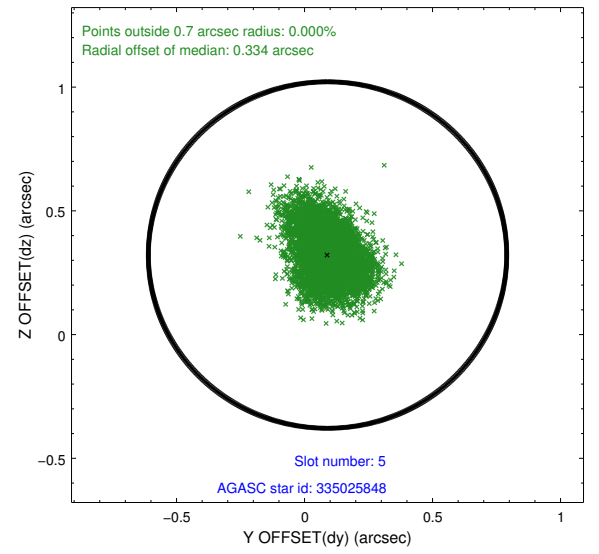
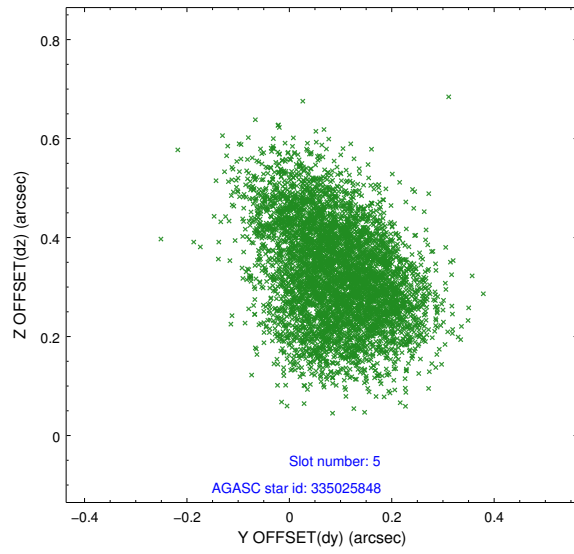
2.4.1 Slot 3



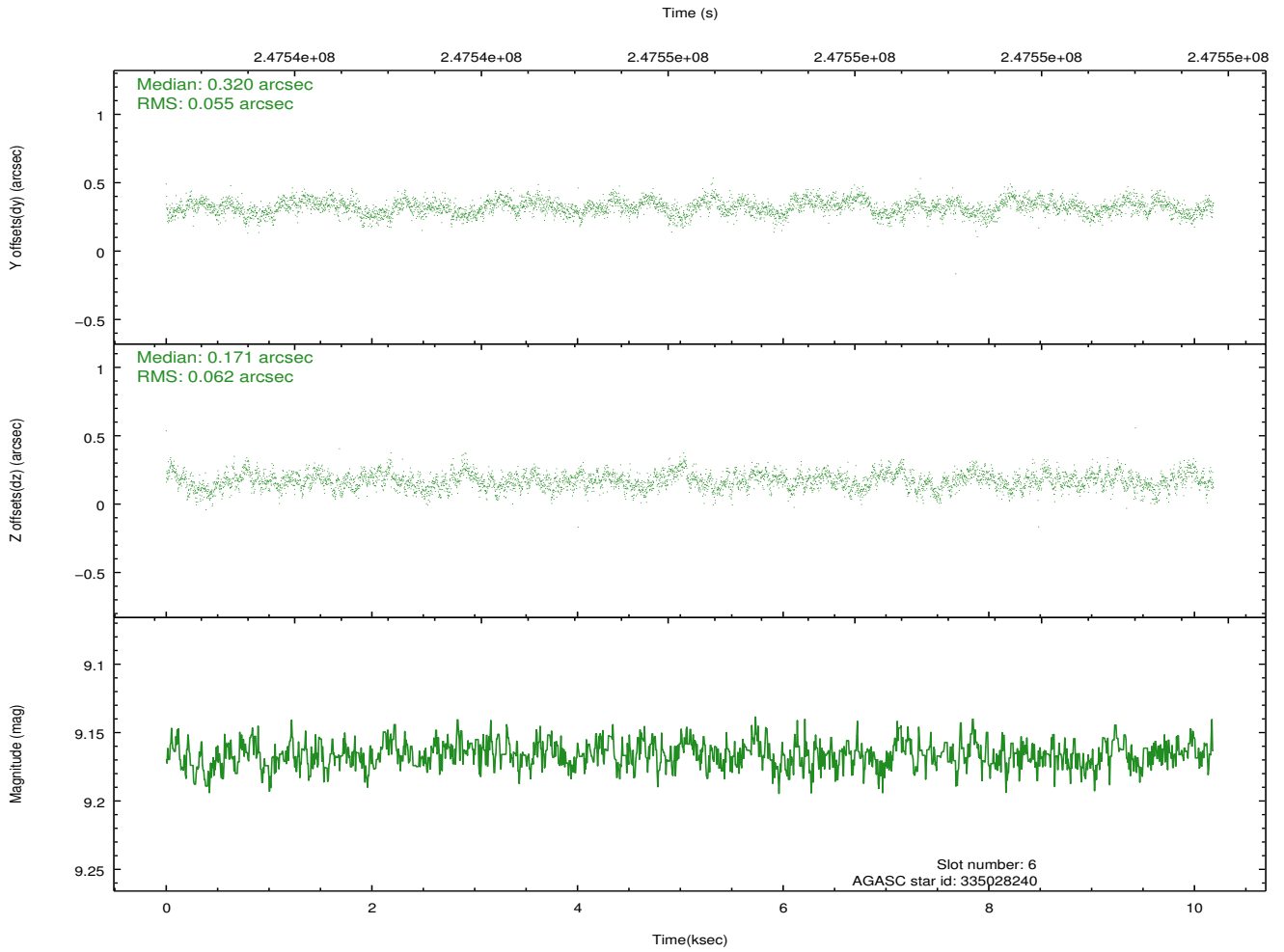
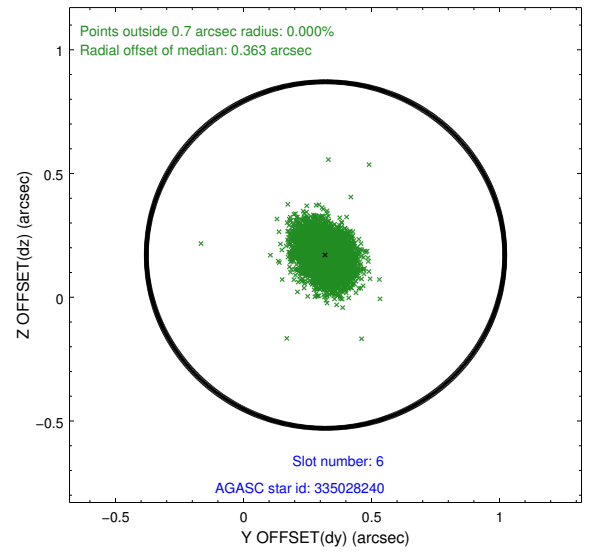
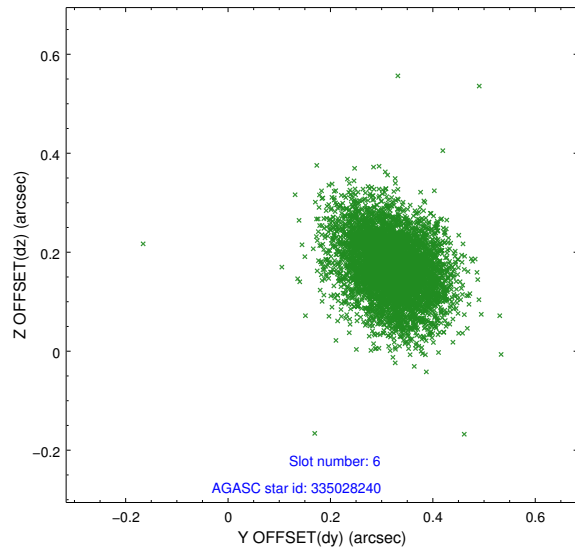
2.4.2 Slot 4



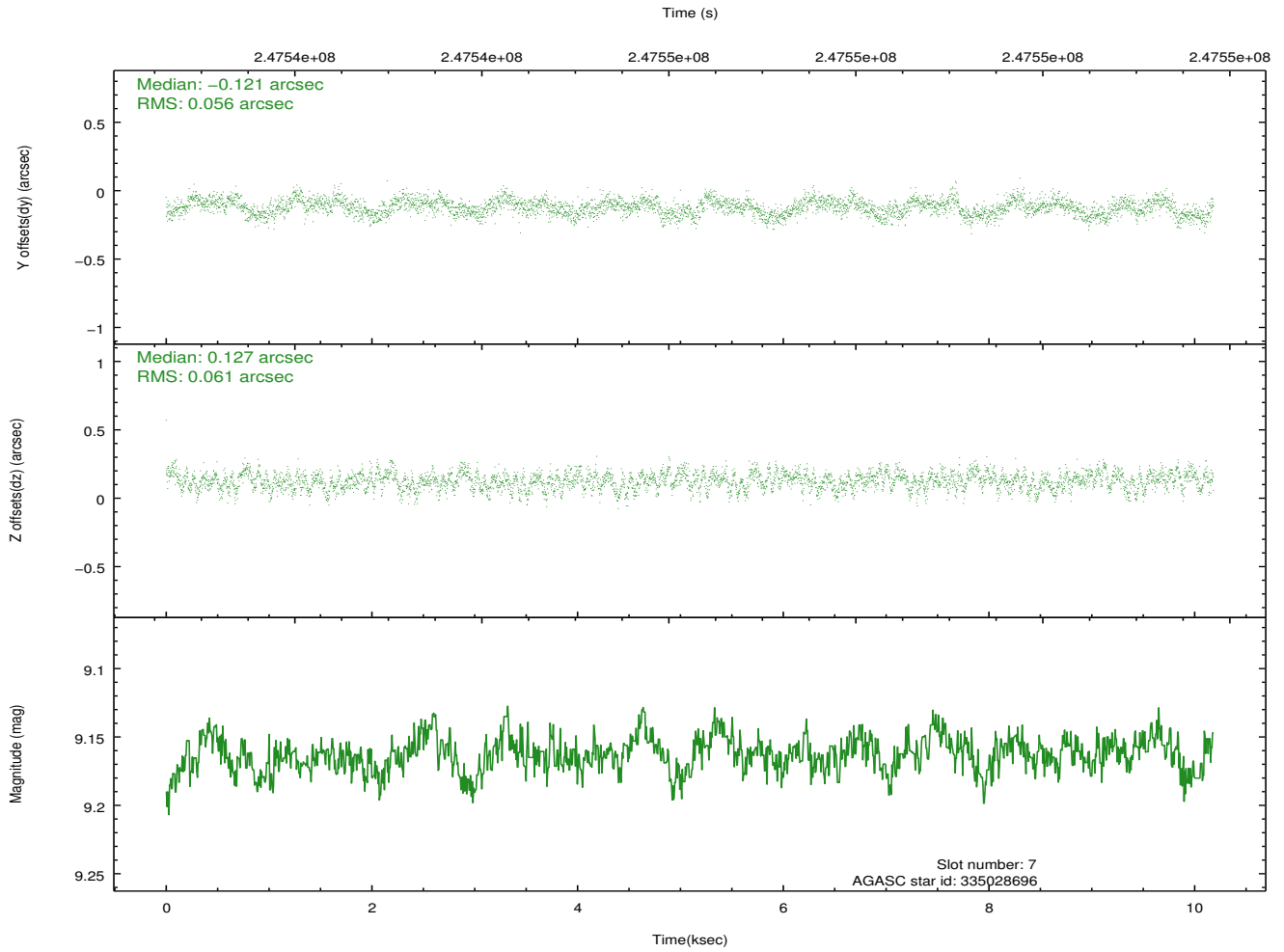
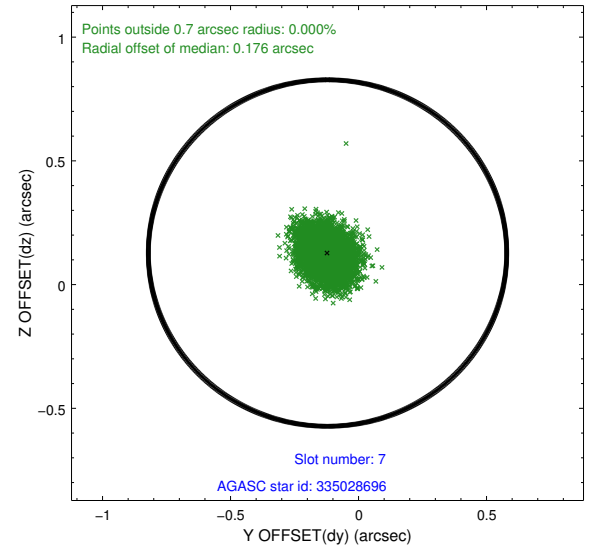
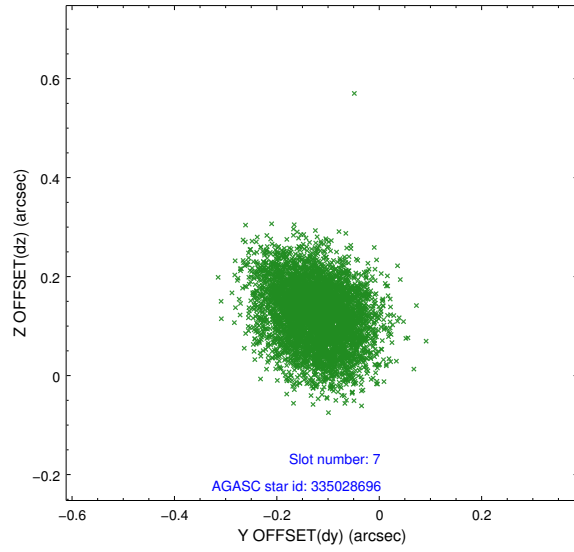
2.4.3 Slot 5



2.4.4 Slot 6

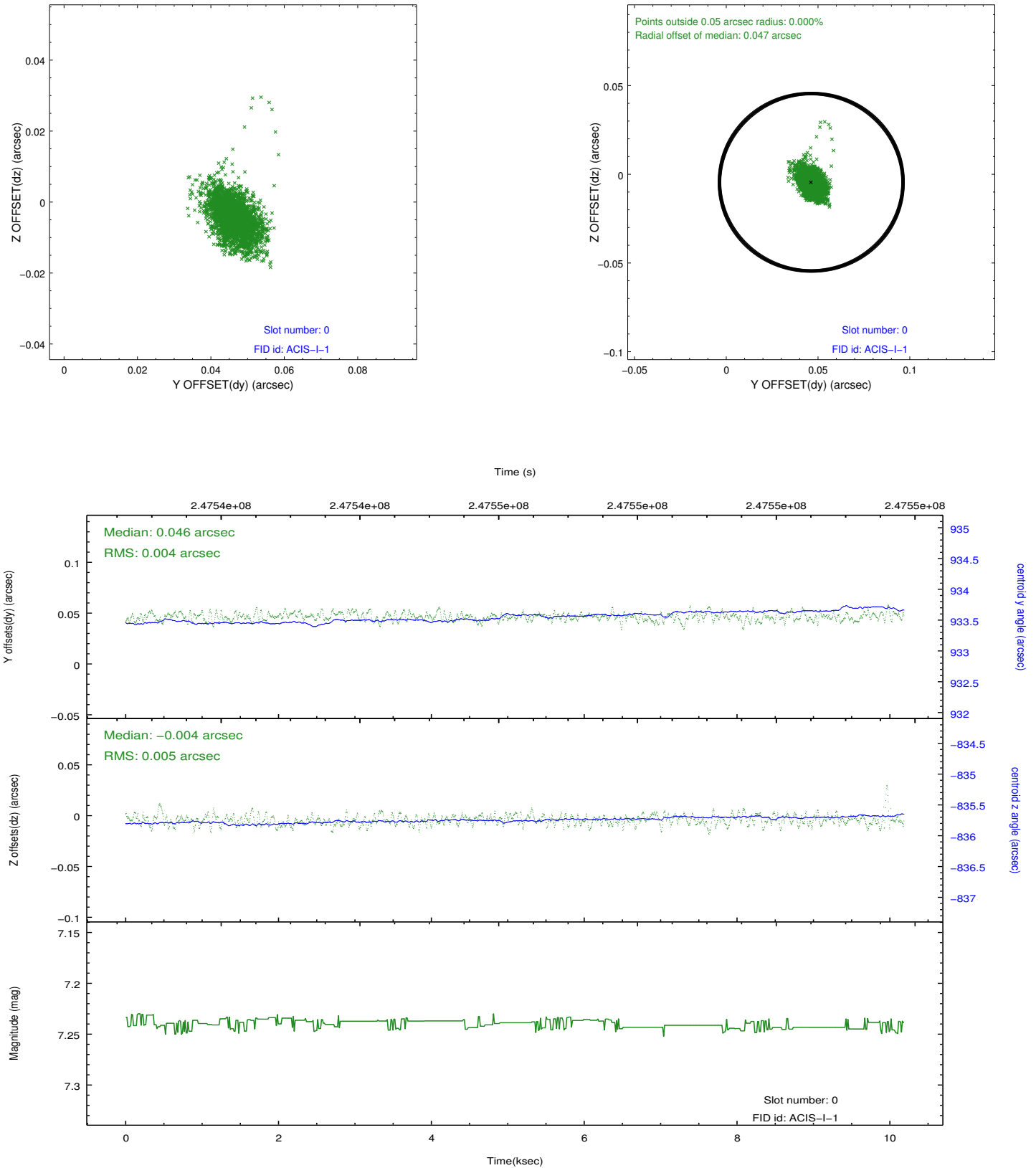


2.4.5 Slot 7

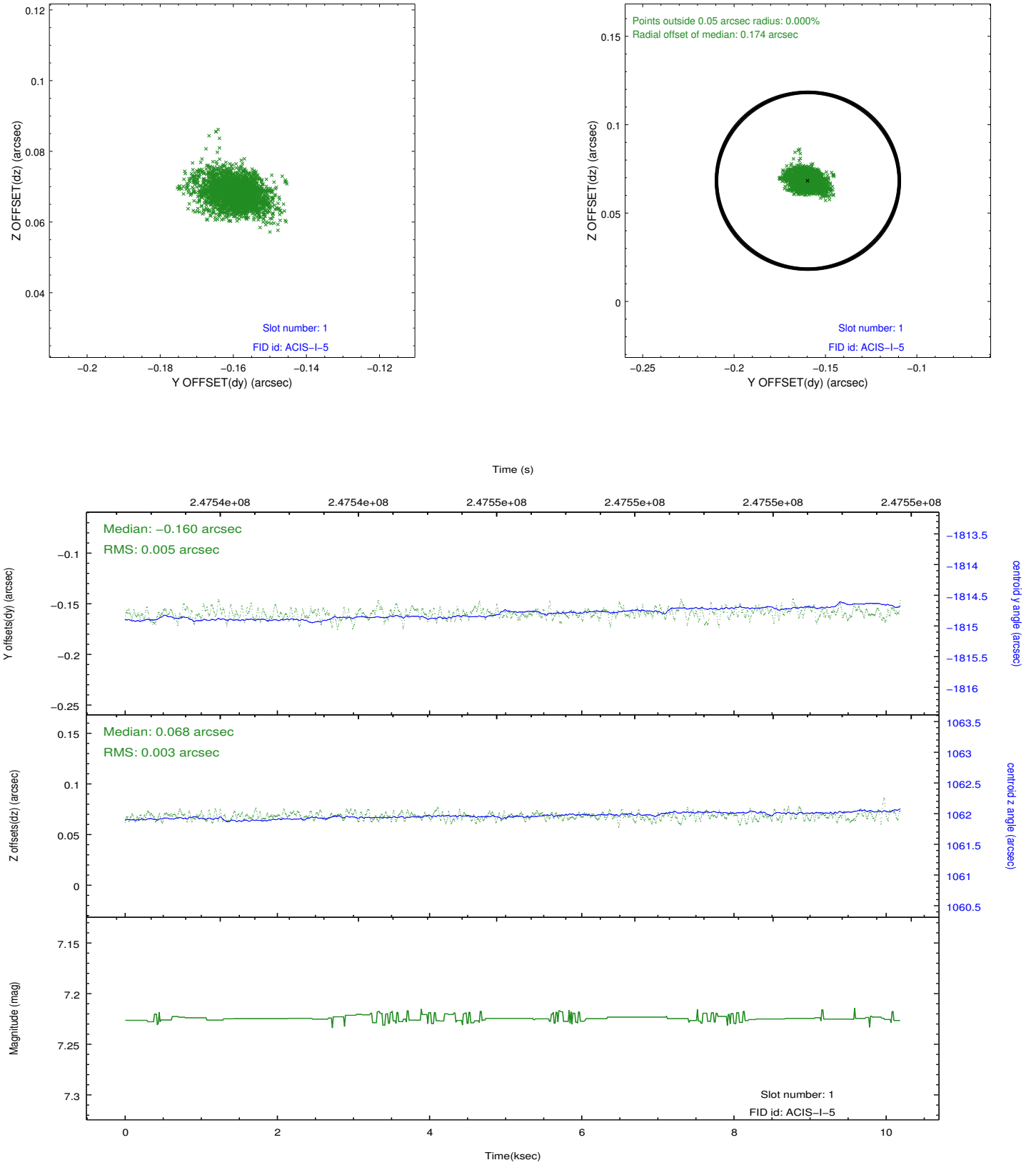


2.5 FID Slots

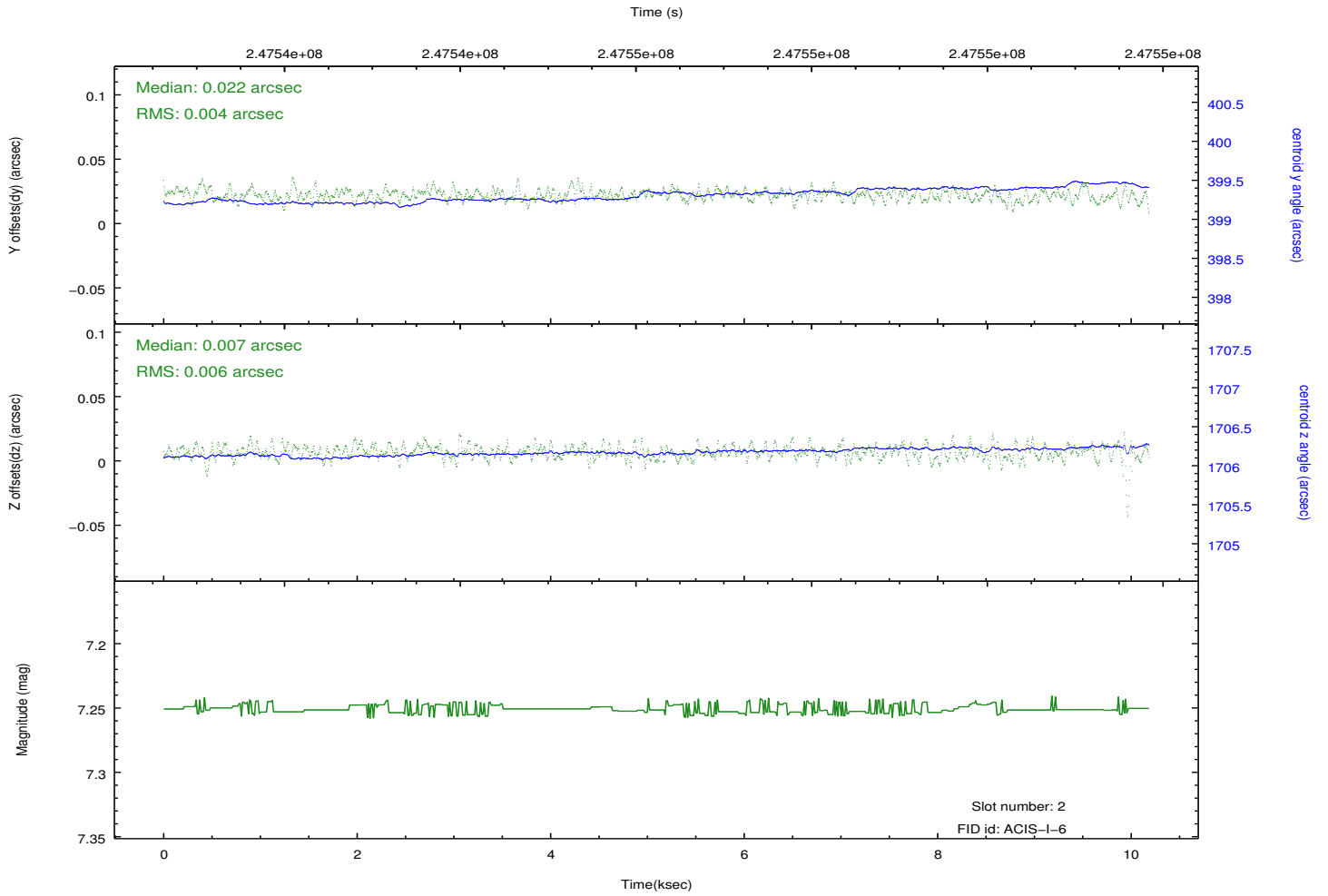
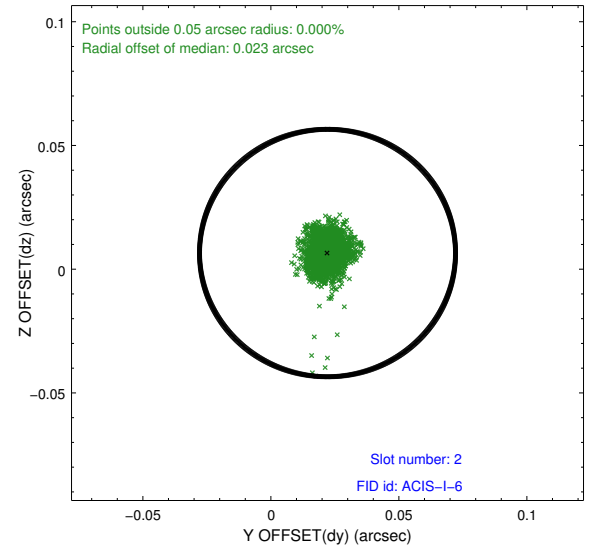
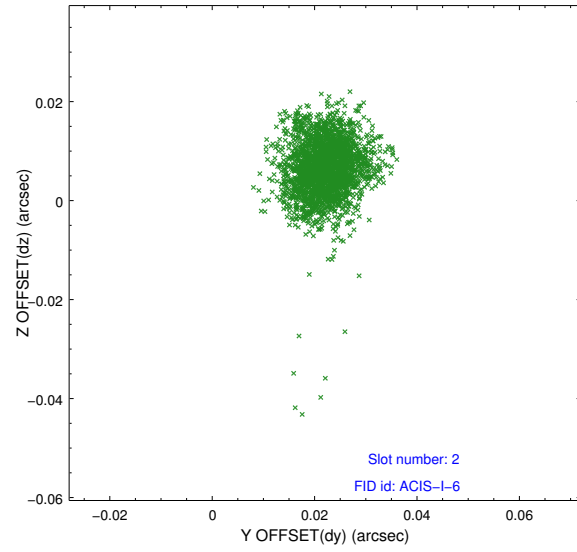
2.5.1 Slot 0



2.5.2 Slot 1



2.5.3 Slot 2



A Summary

A.1 Status

V&V Scientist	Jen Lauer
V&V Date (YYYY-MM-DD)	2013.01.28
V&V Edition	1
V&V Disposition and Status	OK
V&V Charge Time	9.777399

A.2 Comments