

V&V Reference Report

L2 ASCDS Version : 8.4.3.1

Observation 6991 - L2 Version 2
Chandra X-Ray Center

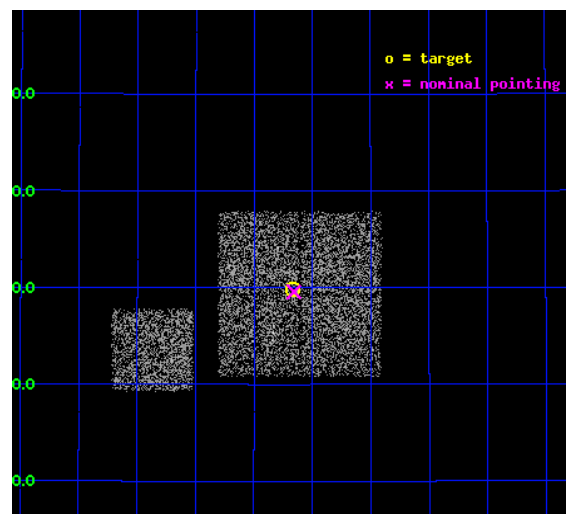
L2 Processing Date : Apr 7 2012

Contents

1	Front	2
2	OBI	3
2.1	OBI	3
2.1.1	Images	3
2.1.2	Bias	3
2.1.3	Parameters	4
2.1.4	Events	4
2.2	Compared Parameters	5
2.3	Aspect	6
2.4	Star Slots	9
2.4.1	Slot 3	9
2.4.2	Slot 4	10
2.4.3	Slot 5	11
2.4.4	Slot 6	12
2.4.5	Slot 7	13
2.5	FID Slots	14
2.5.1	Slot 0	14
2.5.2	Slot 1	15
2.5.3	Slot 2	16
A	Summary	17
A.1	Status	17
A.2	Comments	17

1 Front

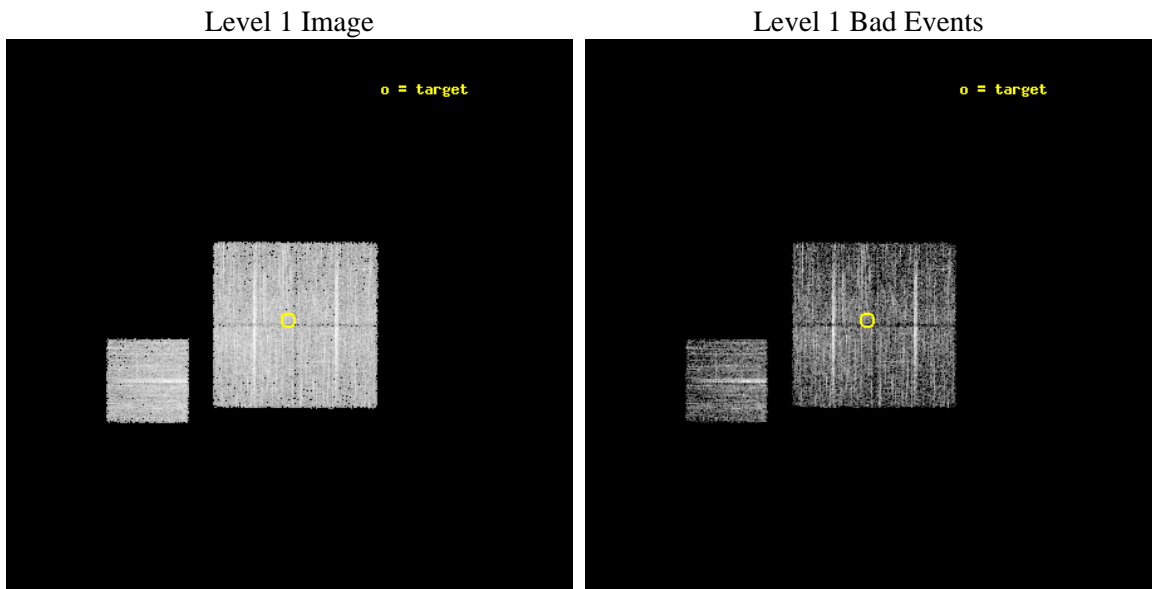
seq_num	900407	Sequence number
obs_id	6991	Observation id
title	Chandra Large Scale Survey of the NOAO Bootes Deep Field (A)	Propo
observer	Dr Stephen Murray	Principal investigator
object	Bootes2 13	Source name
dtcycle	0	
cycle	P	events from which exps? Prim/Second/Both
ra_targ	218.66662	Observer's specified target RA [deg]
dec_targ	35.497238	Observer's specified target Dec [deg]
ra_nom	218.66443659385	Nominal RA [deg]
dec_nom	35.492906769254	Nominal Dec [deg]
roll_nom	270.20993749608	Nominal Roll [deg]
revision	2	Processing version of data
ontime	4469.3849833608	Sum of GTIs [s]
livetime	4410.9891782398	Livetime [s]
ontime0	4472.4028137326	Sum of GTIs [s]
ontime1	4472.4438737035	Sum of GTIs [s]
ontime2	4469.3439134359	Sum of GTIs [s]
ontime3	4469.3849833608	Sum of GTIs [s]
ontime6	4472.3617936969	Sum of GTIs [s]
l2events	12643	Number of level 2 events



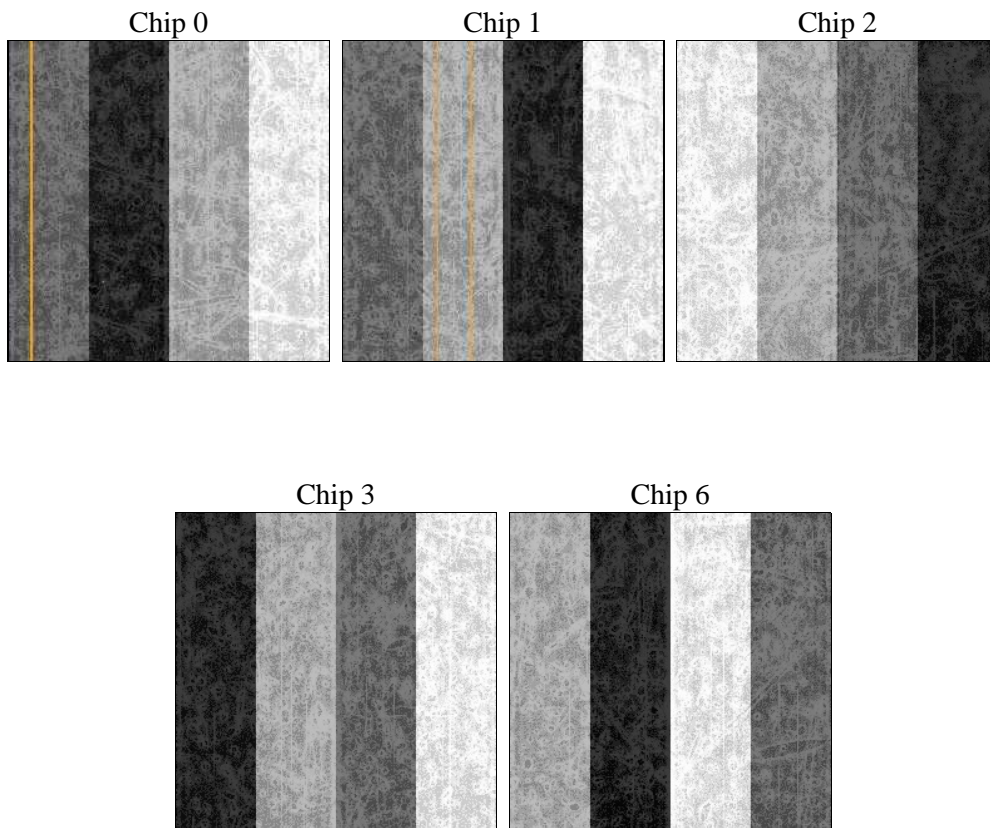
2 OBI

2.1 OBI

2.1.1 Images



2.1.2 Bias



2.1.3 Parameters

obi_num	0	Obi number	sched_exp_time	4700.000000	[s] Scheduled observation exposure time
ascdsver	8.4.3.1	Processing system revision	ontime	4469.3849833608	Sum of GTIs [s]
caldsver	4.4.9	 	ontime0	4472.4028137326	Sum of GTIs [s]
date	2012-04-07T08:56:37	Date and time of file creation	ontime1	4472.4438737035	Sum of GTIs [s]
revision	2	Processing version of data	ontime2	4469.3439134359	Sum of GTIs [s]
			ontime3	4469.3849833608	Sum of GTIs [s]
			ontime6	4472.3617936969	Sum of GTIs [s]
			l1events	162715	Number of level 1 events

2.1.4 Events

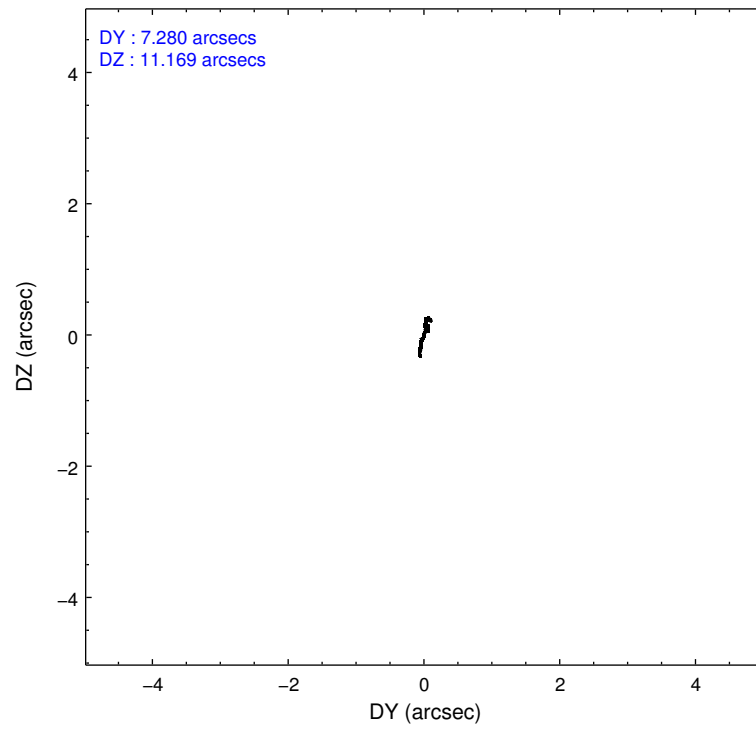
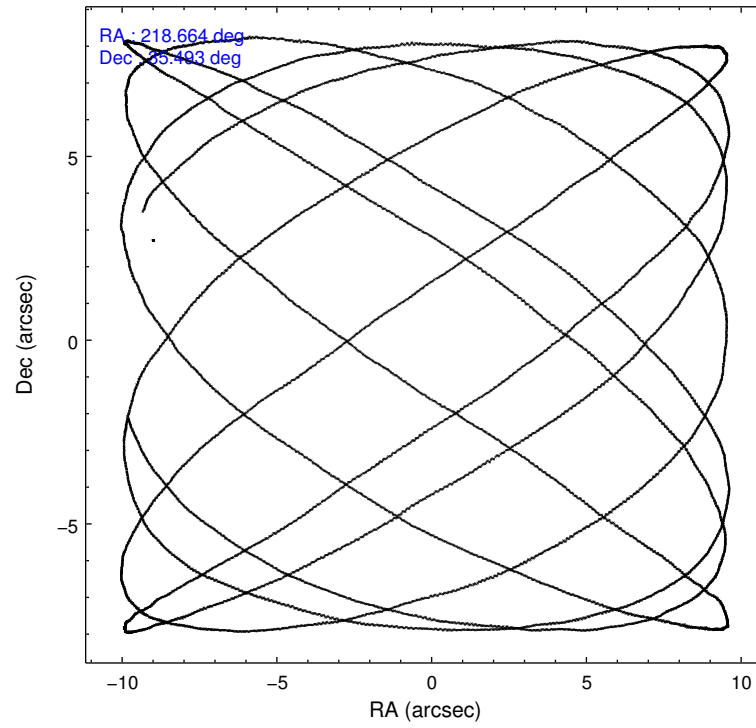
	ccd 0	ccd 1	ccd 2	ccd 3	ccd 6
level 1 events	31105	29222	36433	33276	32679
rejected events	27937	25935	33359	30421	29485
rejected %	89%	88%	91%	91%	90%

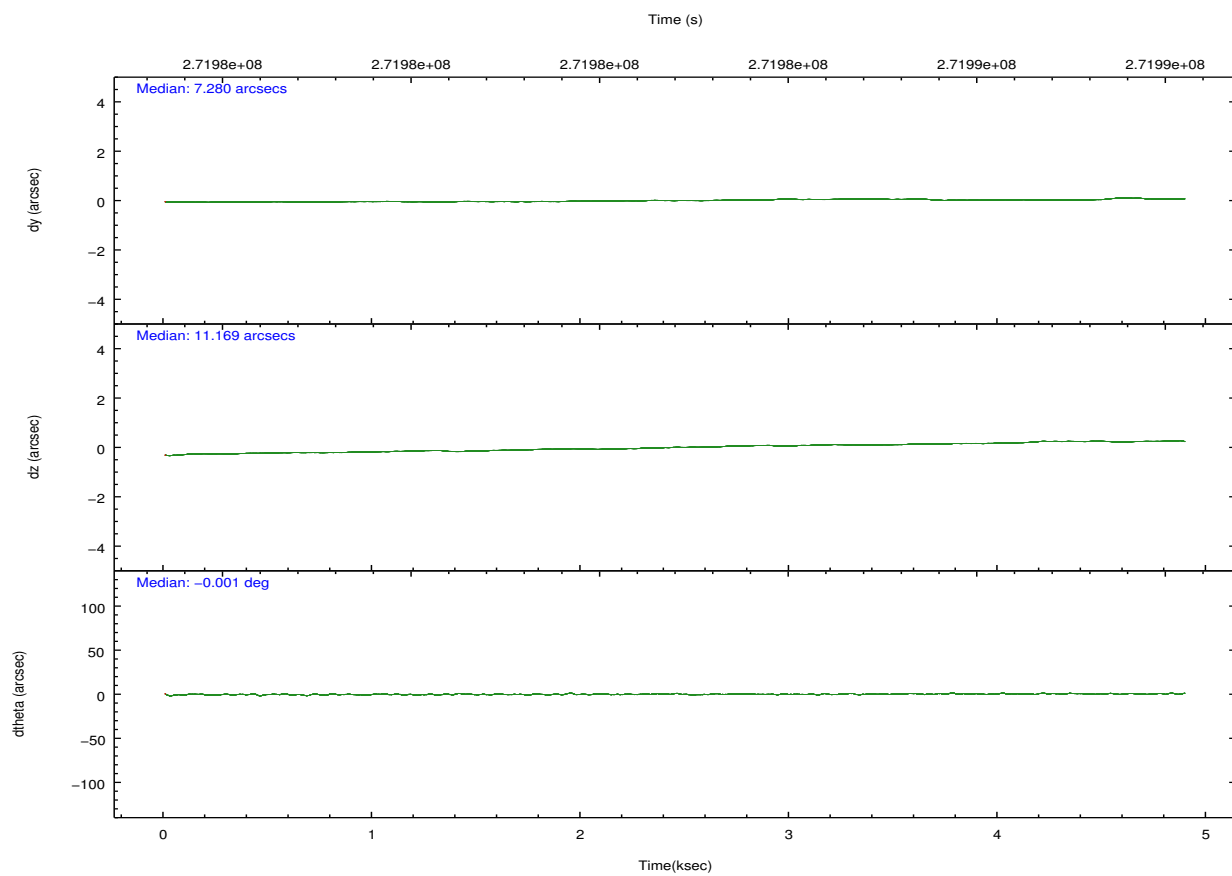
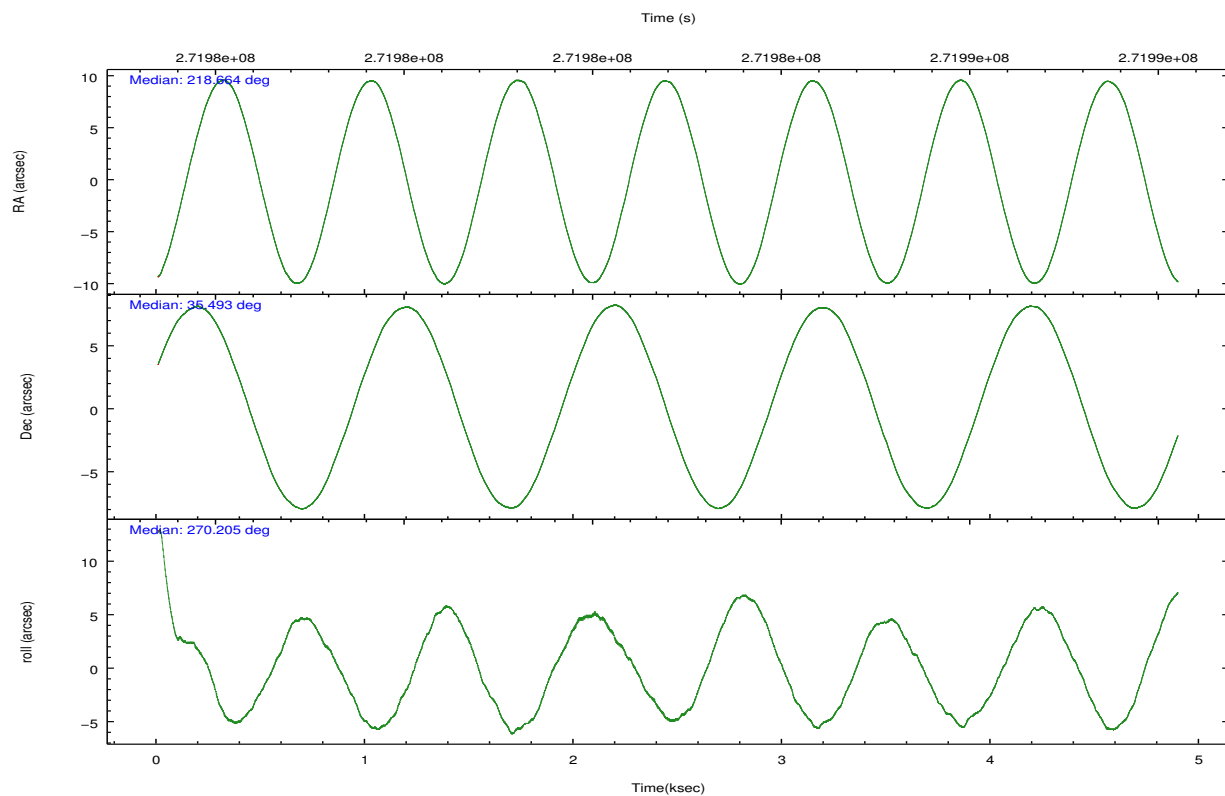
	ccd 0	ccd 1	ccd 2	ccd 3	ccd 6
grade 0 events	1152	1134	1128	1086	1147
	3%	3%	3%	3%	3%
grade 1 events	13	14	22	17	19
	0%	0%	0%	0%	0%
grade 2 events	700	734	743	587	724
	2%	2%	2%	1%	2%
grade 3 events	379	376	329	325	357
	1%	1%	0%	0%	1%
grade 4 events	341	371	357	328	315
	1%	1%	0%	0%	0%
grade 5 events	908	1030	835	1081	1023
	2%	3%	2%	3%	3%
grade 6 events	597	675	525	530	656
	1%	2%	1%	1%	2%
grade 7 events	27015	24888	32494	29322	28438
	86%	85%	89%	88%	87%

2.2 Compared Parameters

Parameter	Planned	Actual	Parameter	Planned	Actual
Instrument	ACIS	ACIS	Obspar format version number	7	7
Detector	ACIS-01236	ACIS-01236	Obspar file type	PREDICTED	ACTUAL
Grating	NONE	NONE	Obspar update status	NONE	UPDATED
Data mode	VFAINT	VFAINT	Number of optional ACIS chips dropped	0	0
Observation mode	POINTING	POINTING	On-chip summing requested	N	N
[deg] Pointing RA	218.647357	218.664436593845	Subarray requested	NONE	NONE
[deg] Pointing Dec	35.516527	35.49290676925449	Alternating exposures requested	N	N
[deg] Pointing Roll	270.011182	270.2099374960809	[s] Primary exposure time	0.000000	3.1
[mm] SIM focus pos	-0.782348	-0.7809083437167272			
[mm] SIM defocus	0	0.001439871863259334			
[mm] SIM translation stage pos	-233.592463	-233.5874344608287			
[mm] SIM translation stage offset	0	-0.005018542100998502			
[s] Observation start time (MET)	271982153.184000	271981777.52602			
Observation start date	2006-08-14T22:34:48	2006-08-14T22:29:37			
[s] Observation end time (MET)	271986853.184000	271986987.60126			
Observation end date	2006-08-14T23:53:08	2006-08-14T23:56:27			
Read mode	TIMED	TIMED			

2.3 Aspect



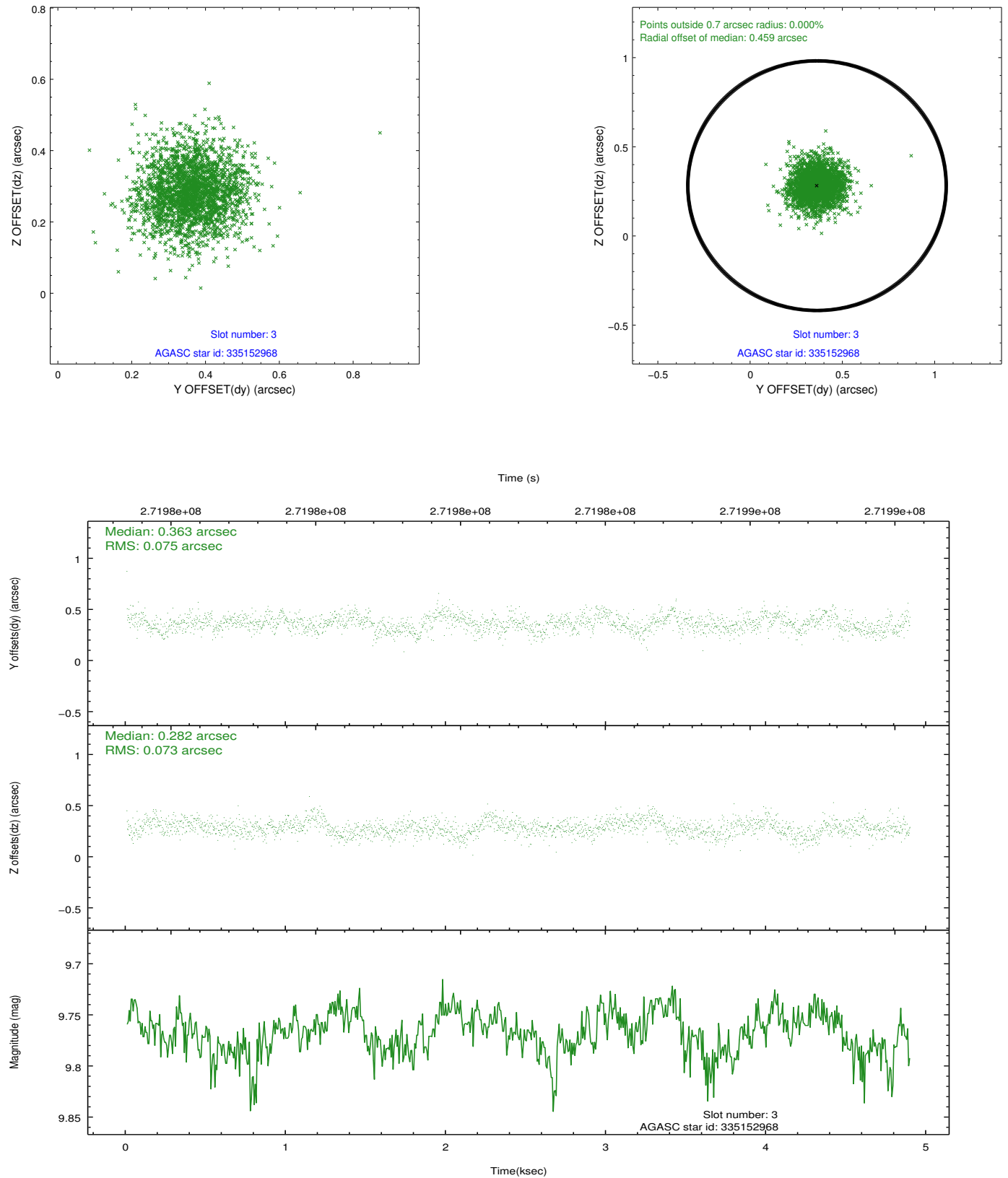


Slot Statistics

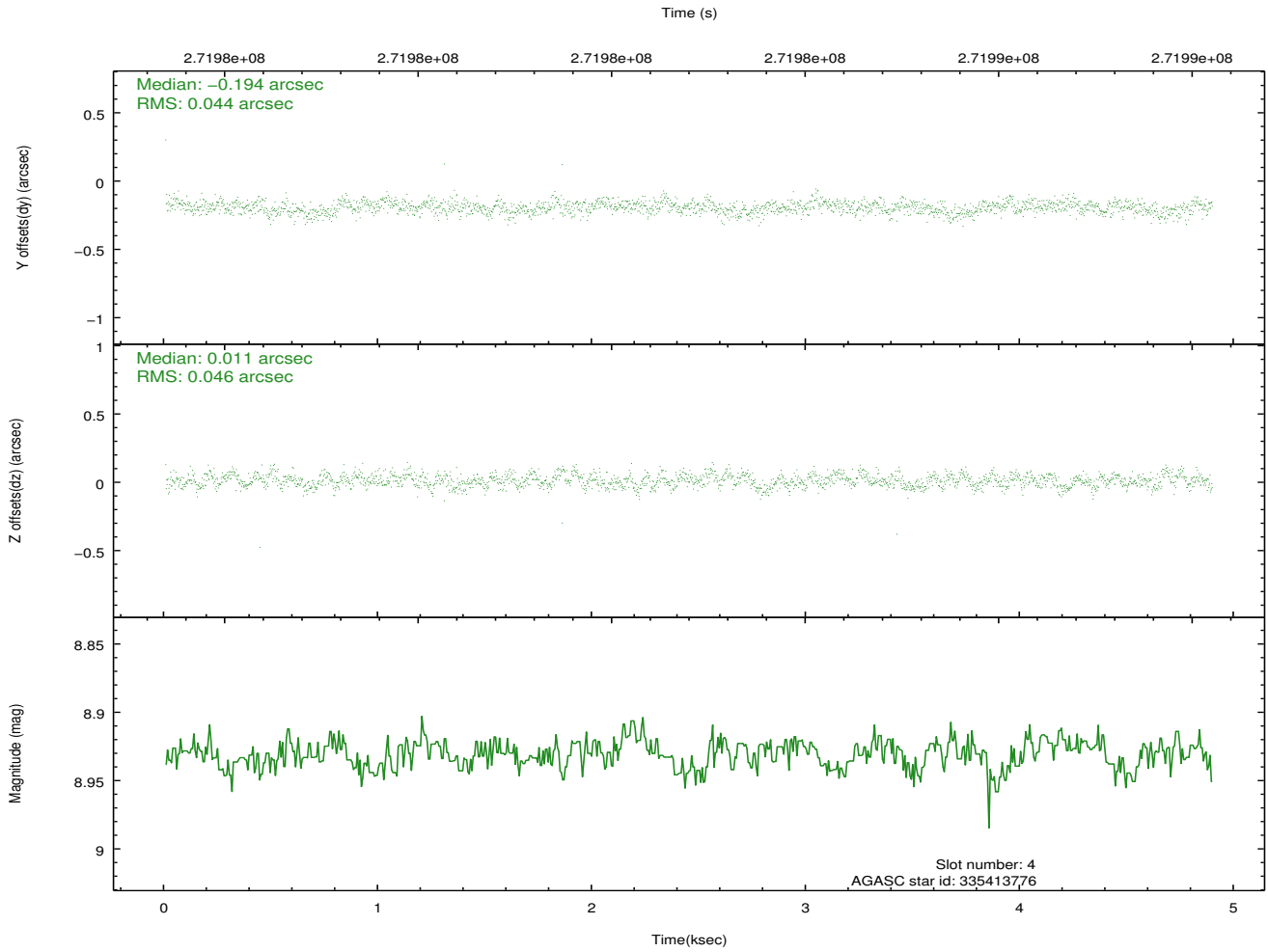
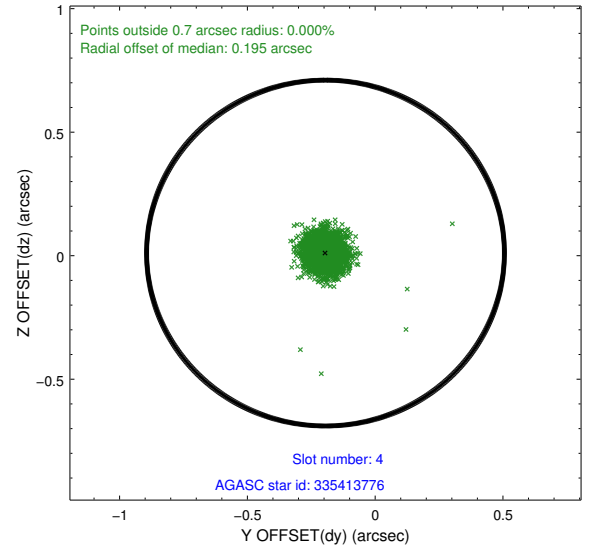
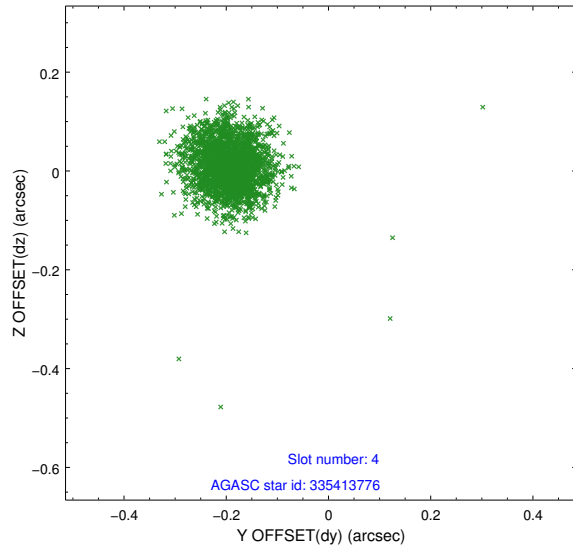
slot	status	id	mag	n_pts	med_dy	med_dz	dr1	dr2	ra	dec	mean_y	mean_z
0	FID	ACIS-I-1	7.24	1194	0.050	-0.057	0.007	0.012	0.000000	0.000000	932.43	-834.73
1	FID	ACIS-I-5	7.23	1194	-0.174	0.055	0.007	0.011	0.000000	0.000000	-1815.18	1062.28
2	FID	ACIS-I-6	7.25	1194	0.032	0.072	0.008	0.013	0.000000	0.000000	396.64	1708.19
3	GUIDE	335152968	9.77	2385	0.363	0.282	0.110	0.180	219.446087	34.867883	2326.83	2359.50
4	GUIDE	335413776	8.93	2386	-0.194	0.011	0.065	0.104	218.421411	36.051962	-1927.51	-656.70
5	GUIDE	335414336	8.95	2385	0.036	-0.031	0.074	0.117	218.979022	35.090910	1530.14	976.55
6	GUIDE	335421696	8.96	2387	-0.078	-0.107	0.084	0.139	218.045699	35.772449	-925.88	-1756.59
7	GUIDE	335549864	7.52	2386	-0.126	-0.155	0.058	0.097	219.286726	35.929745	-1493.79	1863.14

2.4 Star Slots

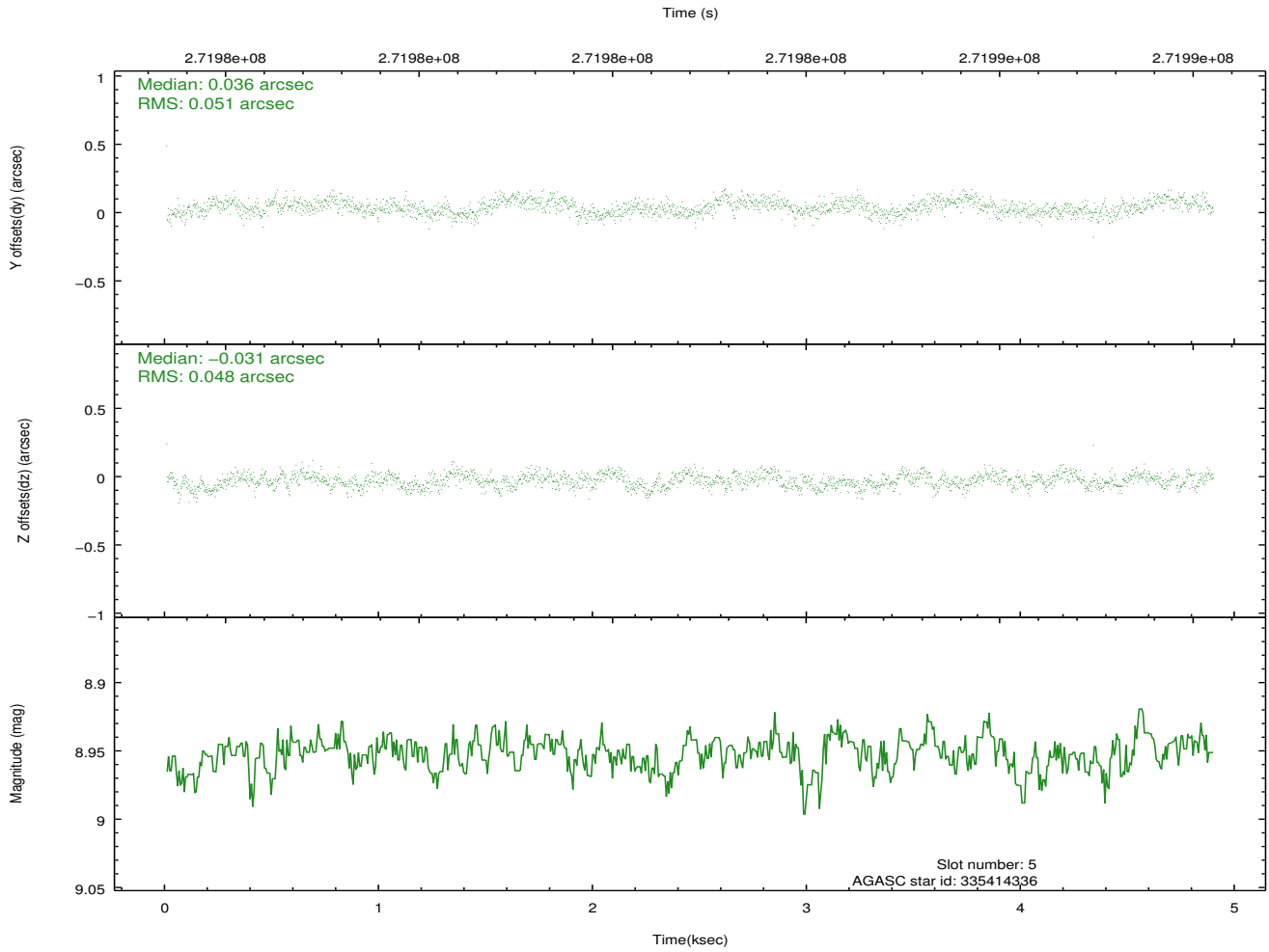
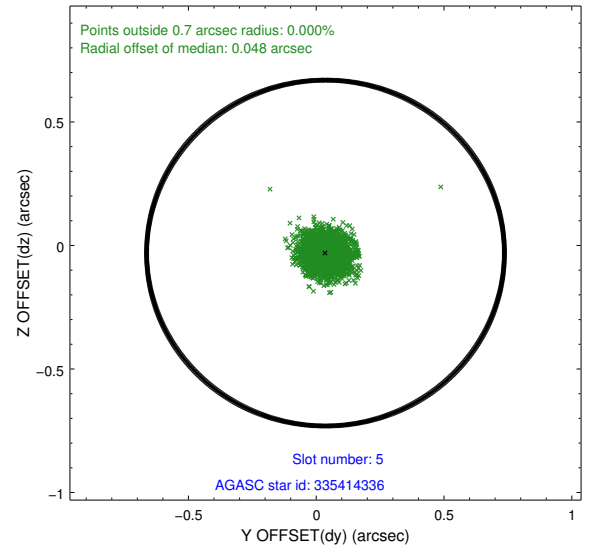
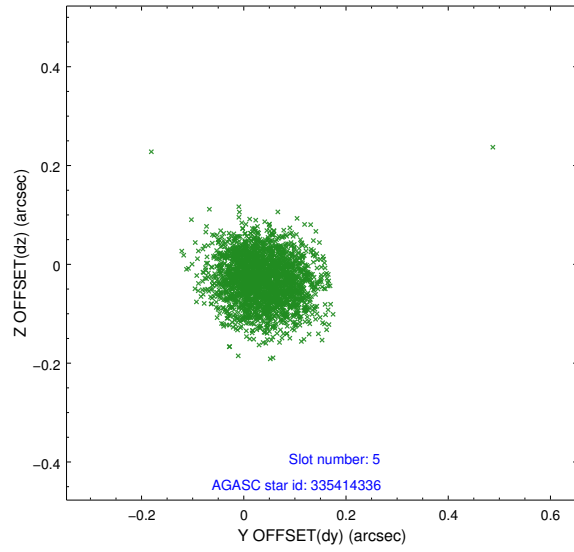
2.4.1 Slot 3



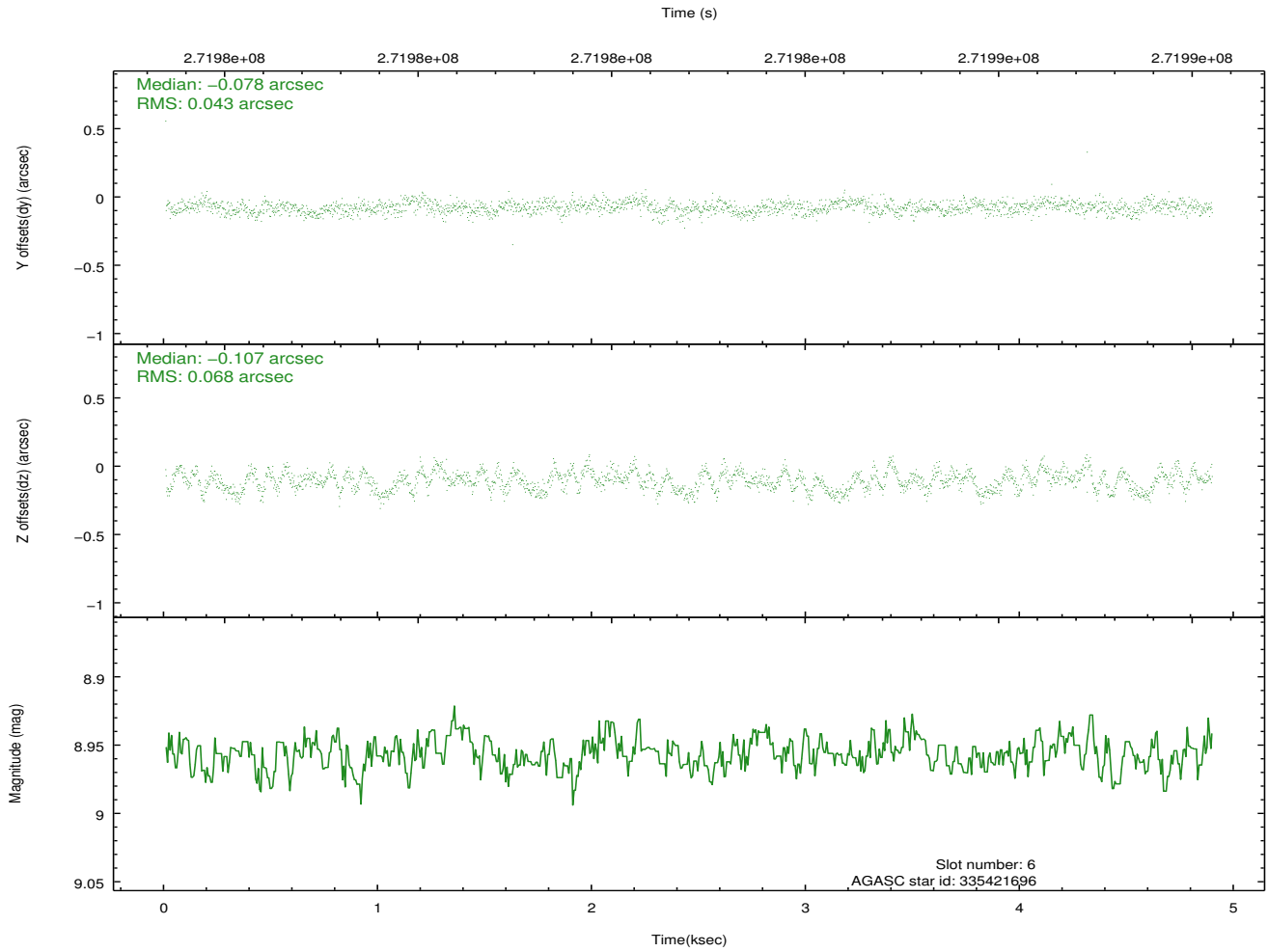
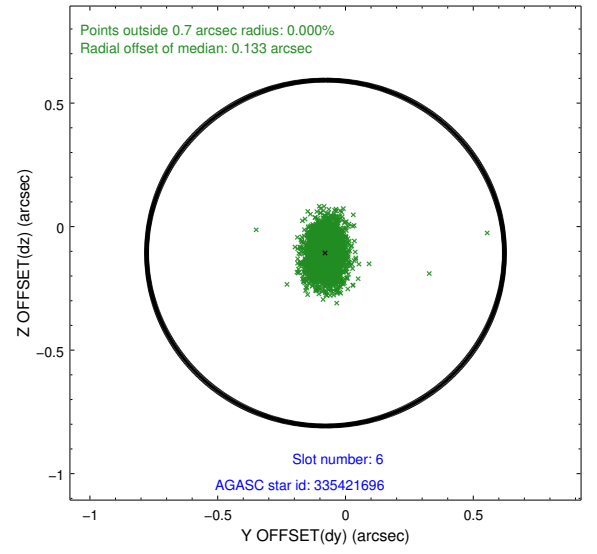
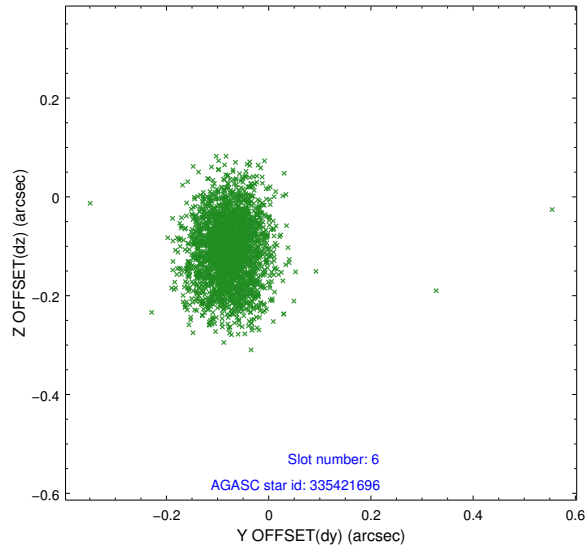
2.4.2 Slot 4



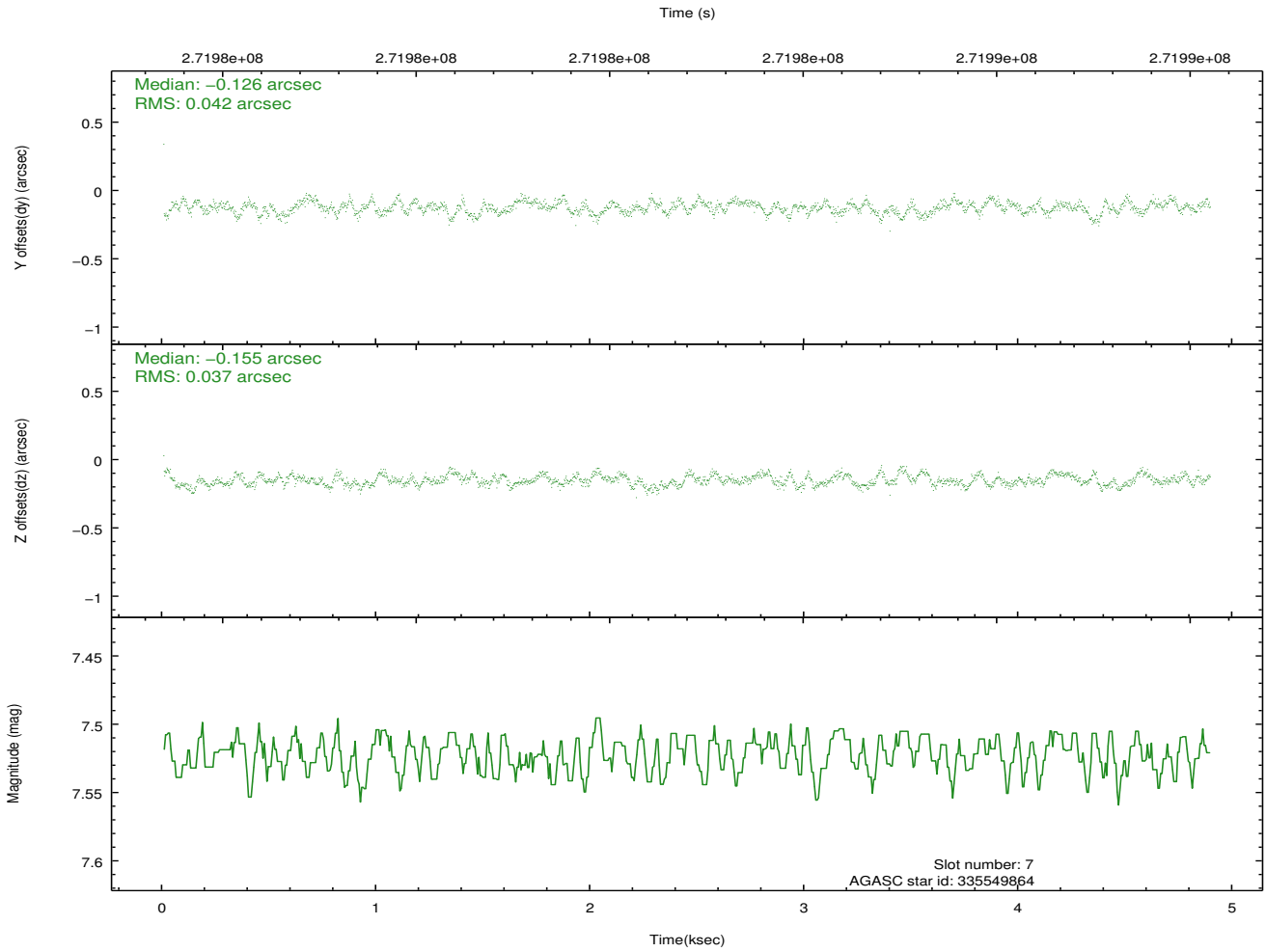
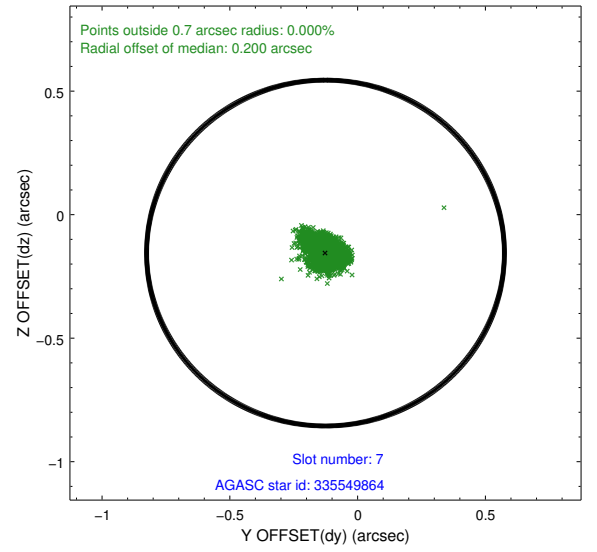
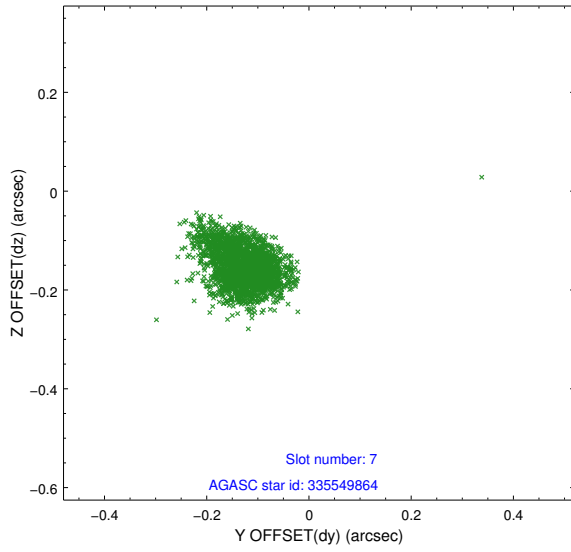
2.4.3 Slot 5



2.4.4 Slot 6

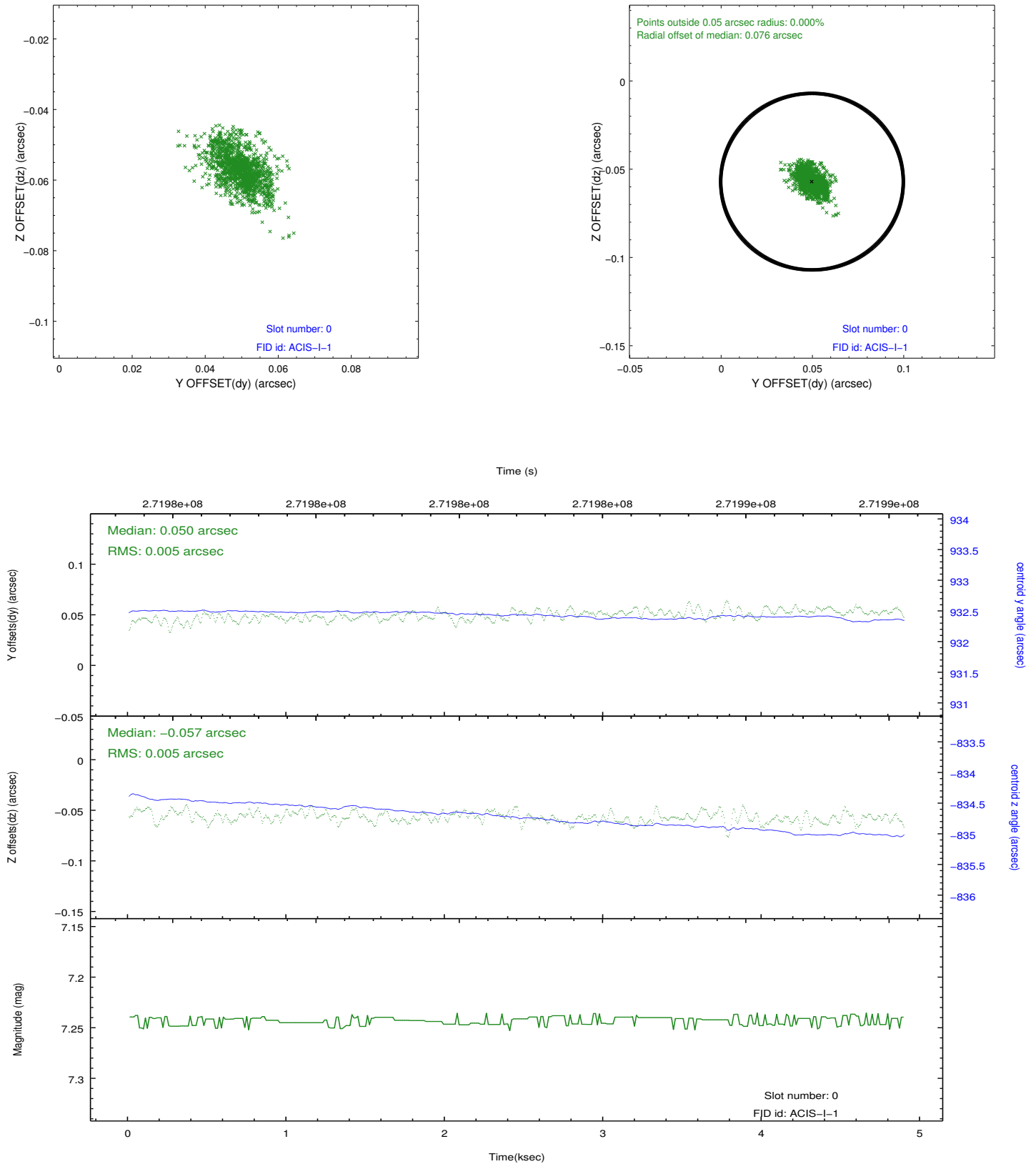


2.4.5 Slot 7

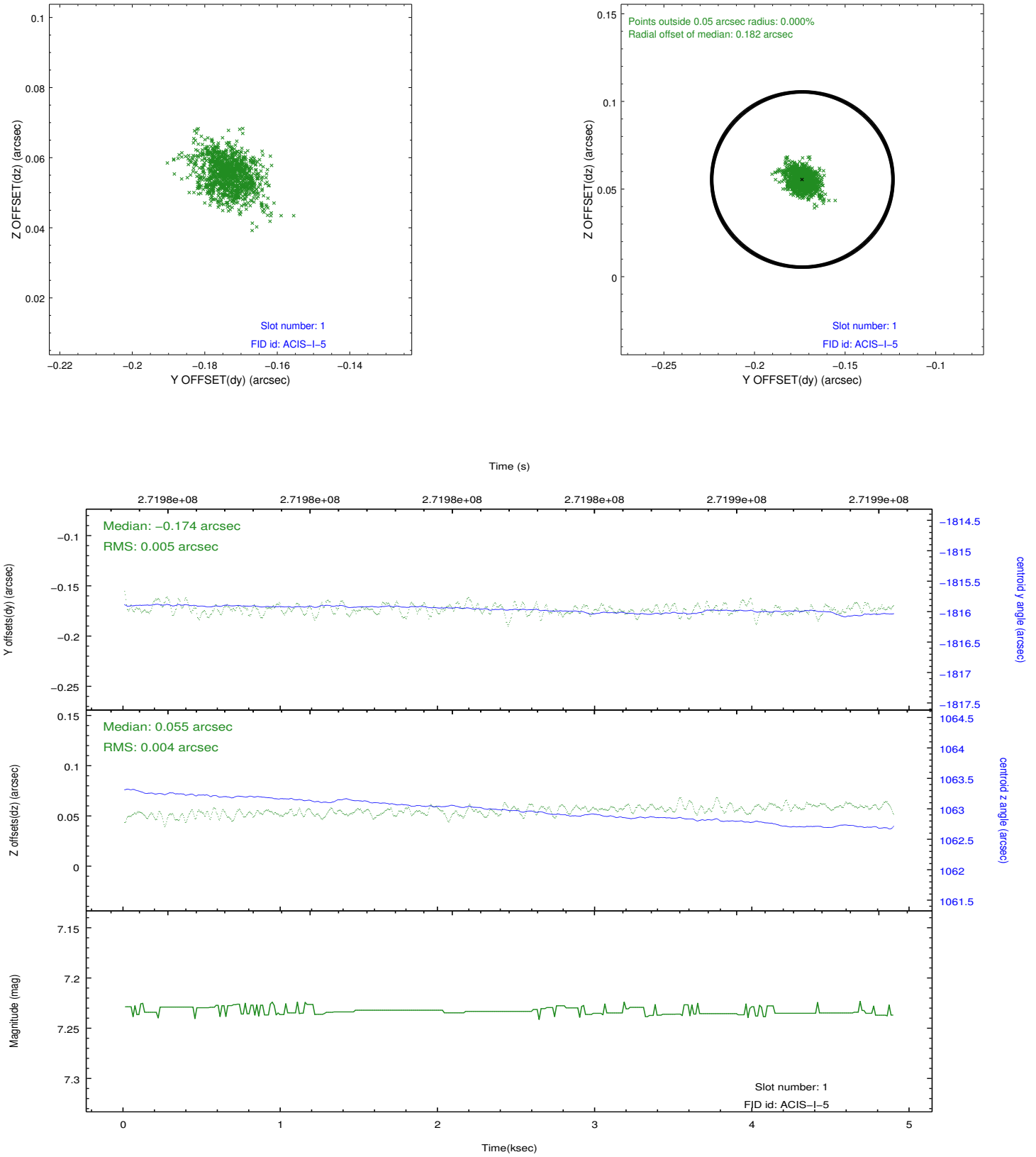


2.5 FID Slots

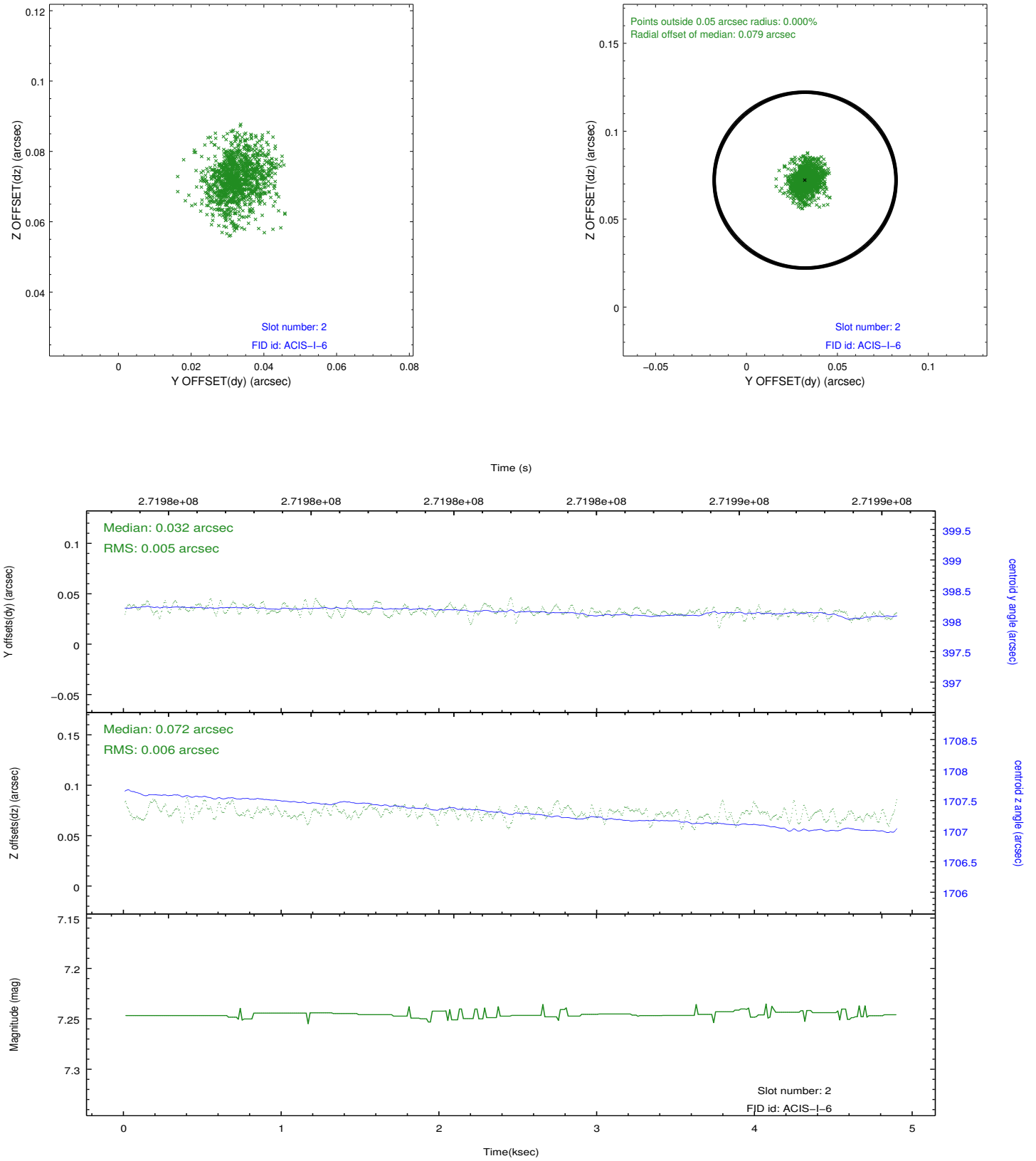
2.5.1 Slot 0



2.5.2 Slot 1



2.5.3 Slot 2



A Summary

A.1 Status

V&V Scientist	Jen Lauer
V&V Date (YYYY-MM-DD)	2012.04.08
V&V Edition	1
V&V Disposition and Status	OK
V&V Charge Time	4.47015906

A.2 Comments