

V&V Reference Report

L2 ASCDS Version : 8.4.3.1

Observation 6987 - L2 Version 2
Chandra X-Ray Center

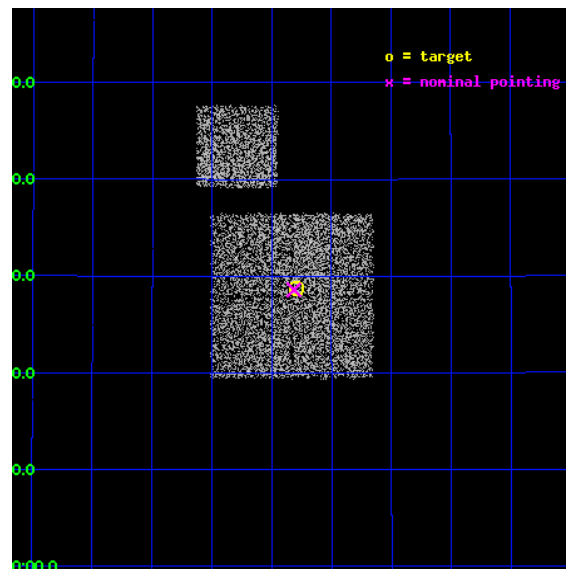
L2 Processing Date : Apr 12 2012

Contents

1	Front	2
2	OBI	3
2.1	OBI	3
2.1.1	Images	3
2.1.2	Bias	3
2.1.3	Parameters	4
2.1.4	Events	4
2.2	Compared Parameters	5
2.3	Aspect	6
2.4	Star Slots	9
2.4.1	Slot 3	9
2.4.2	Slot 4	10
2.4.3	Slot 5	11
2.4.4	Slot 6	12
2.4.5	Slot 7	13
2.5	FID Slots	14
2.5.1	Slot 0	14
2.5.2	Slot 1	15
2.5.3	Slot 2	16
A	Summary	17
A.1	Status	17
A.2	Comments	17

1 Front

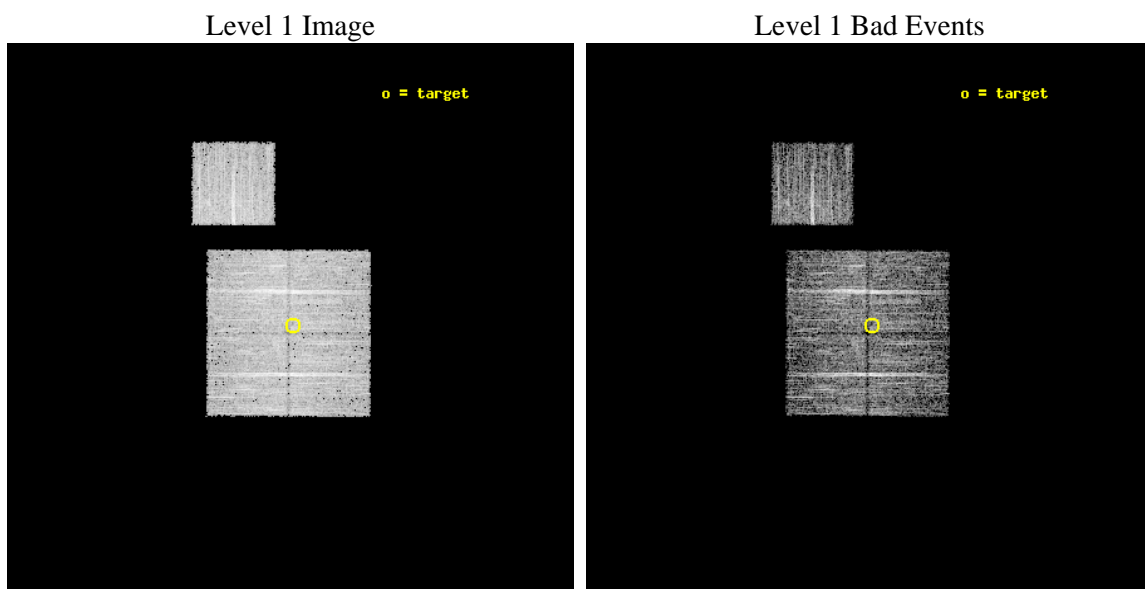
seq_num	900403	Sequence number
obs_id	6987	Observation id
title	Chandra Large Scale Survey of the NOAO Bootes Deep Field (A)	Propo
observer	Dr. Stephen Murray	Principal investigator
object	Bootes2 9	Source name
dtcycle	0	
cycle	P	events from which exps? Prim/Second/Both
ra_targ	216.948446	Observer's specified target RA [deg]
dec_targ	33.478456	Observer's specified target Dec [deg]
ra_nom	216.95365470407	Nominal RA [deg]
dec_nom	33.476587153668	Nominal Dec [deg]
roll_nom	0.20577361245976	Nominal Roll [deg]
revision	2	Processing version of data
ontime	5133.6000394821	Sum of GTIs [s]
livetime	5066.5257756649	Livetime [s]
ontime0	5130.4590691924	Sum of GTIs [s]
ontime1	5133.6000394821	Sum of GTIs [s]
ontime2	5133.6000394821	Sum of GTIs [s]
ontime3	5133.6000394821	Sum of GTIs [s]
ontime6	5133.6000394821	Sum of GTIs [s]
l2events	14691	Number of level 2 events



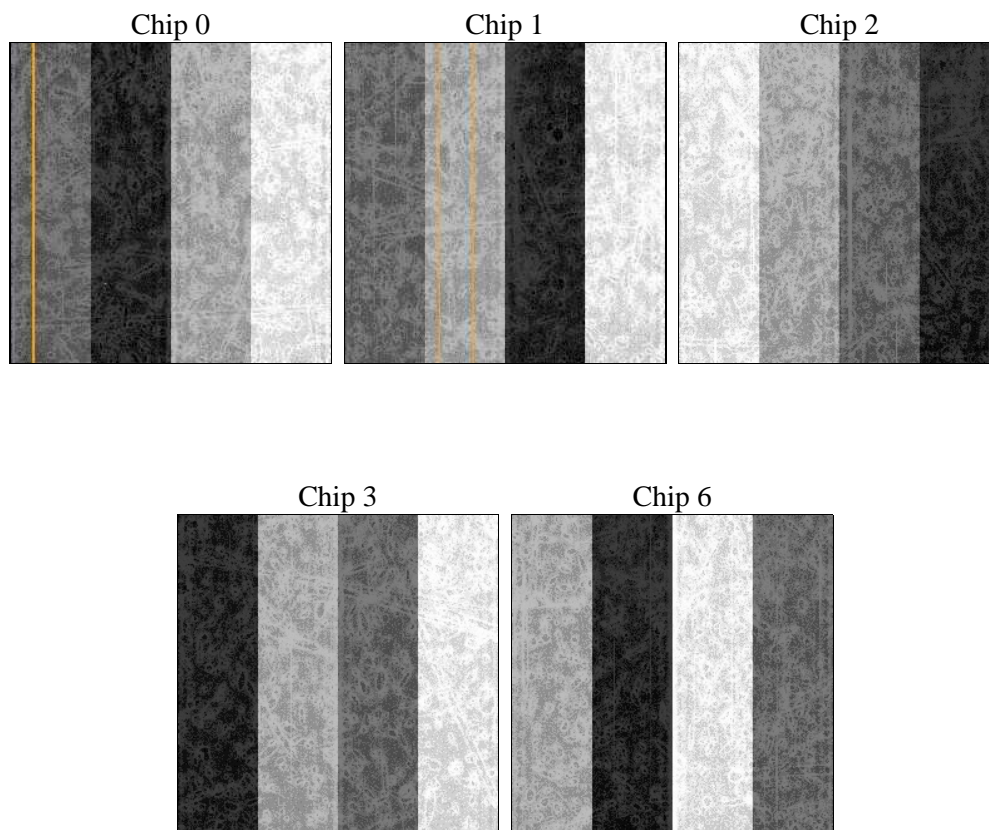
2 OBI

2.1 OBI

2.1.1 Images



2.1.2 Bias



2.1.3 Parameters

obi_num	0	Obi number	sched_exp_time	5000.000000	[s] Scheduled observation exposure time
ascdsver	8.4.3.1	Processing system revision	ontime	5133.6000394821	Sum of GTIs [s]
caldsver	4.4.9	 	ontime0	5130.4590691924	Sum of GTIs [s]
date	2012-04-12T23:11:11	Date and time of file creation	ontime1	5133.6000394821	Sum of GTIs [s]
revision	2	Processing version of data	ontime2	5133.6000394821	Sum of GTIs [s]
			ontime3	5133.6000394821	Sum of GTIs [s]
			ontime6	5133.6000394821	Sum of GTIs [s]
			l1events	189794	Number of level 1 events

2.1.4 Events

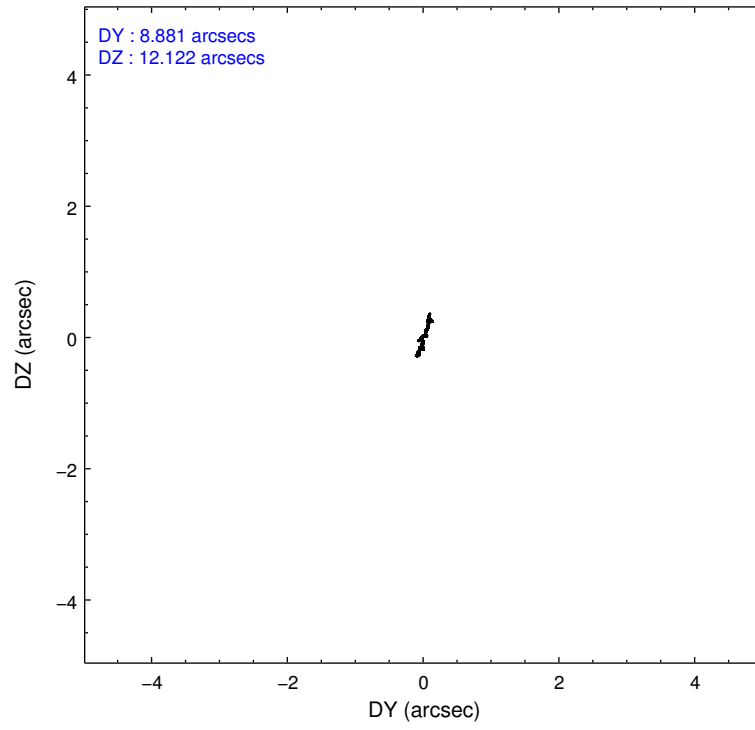
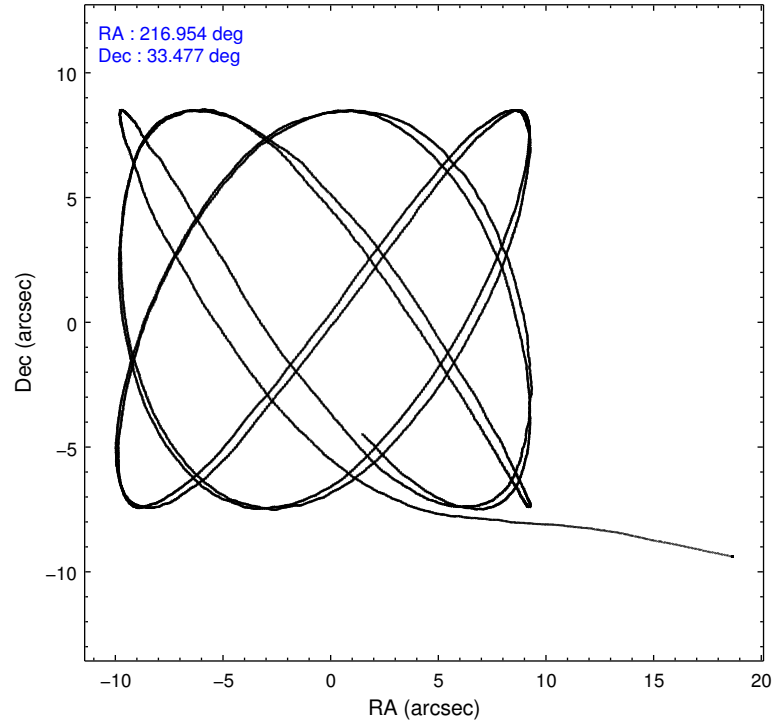
	ccd 0	ccd 1	ccd 2	ccd 3	ccd 6
level 1 events	37503	35576	41133	36346	39236
rejected events	33972	31847	37619	32915	35458
rejected %	90%	89%	91%	90%	90%

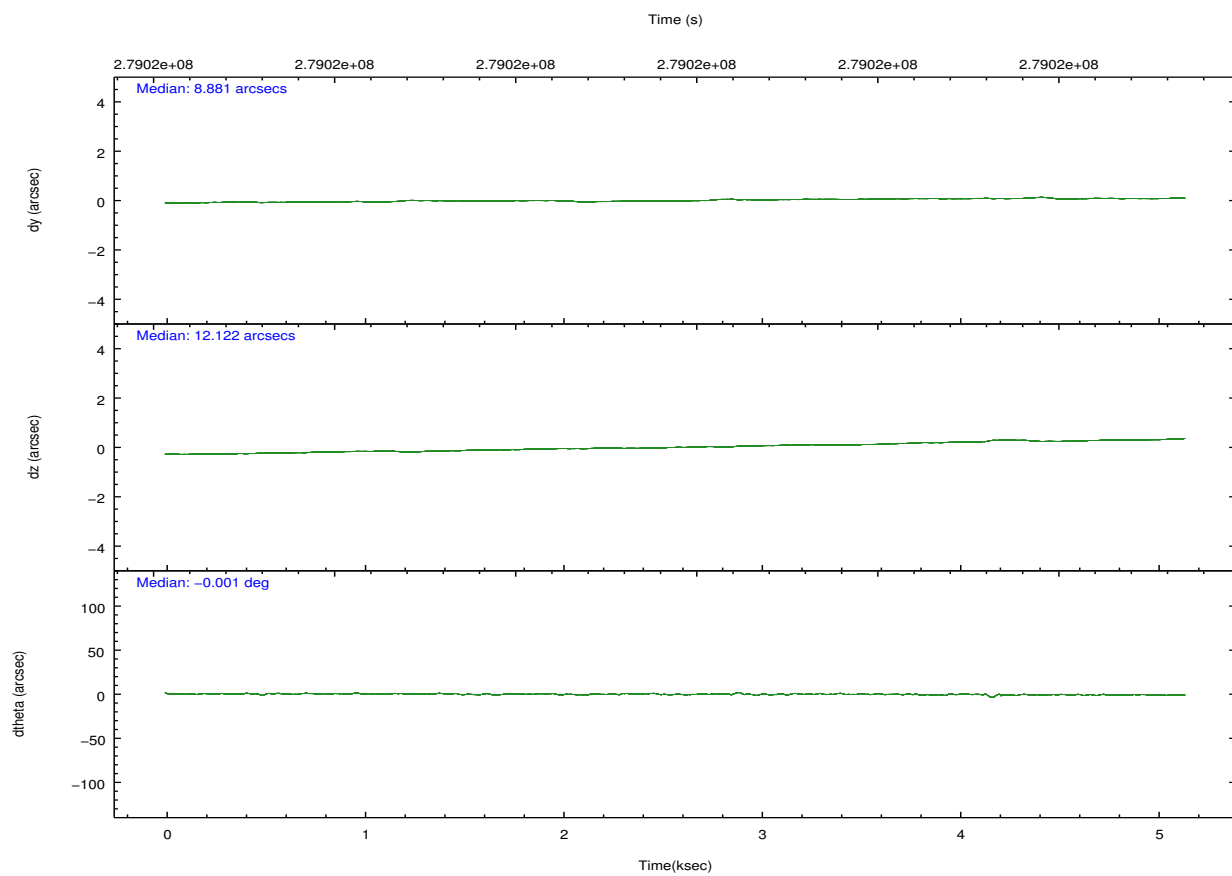
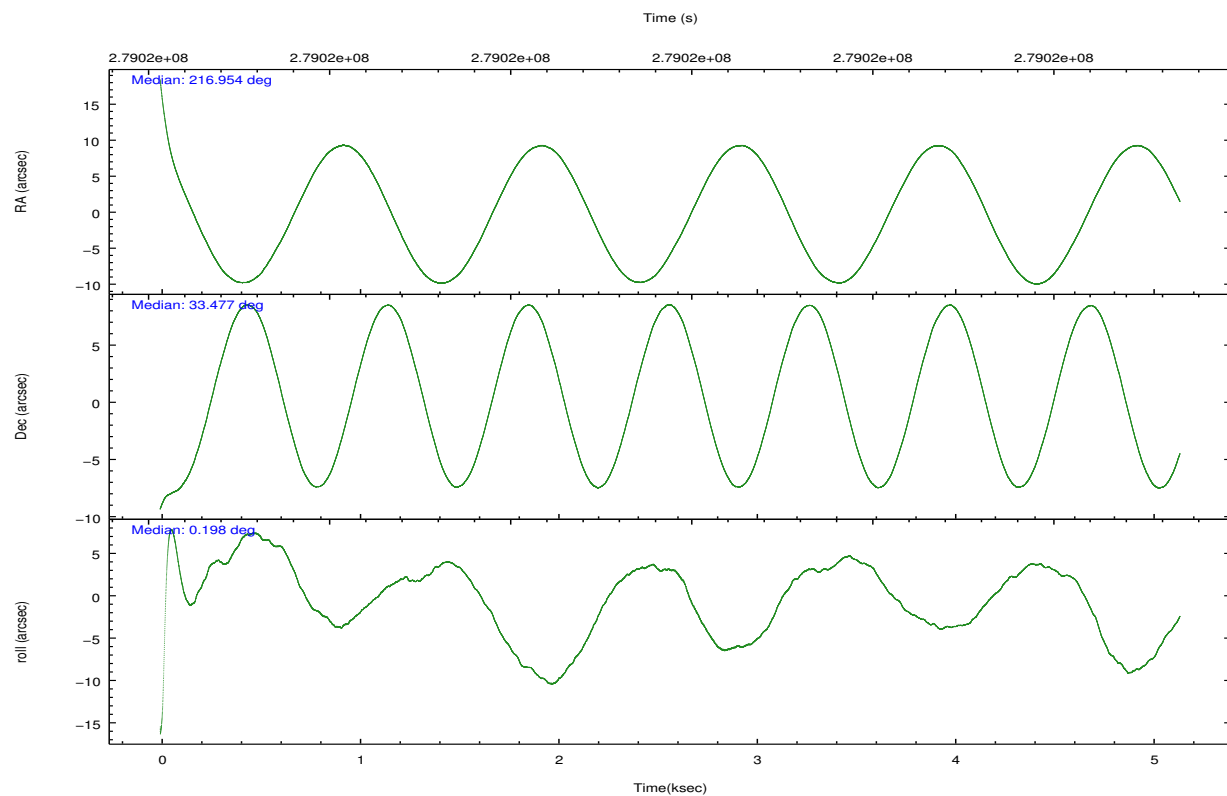
	ccd 0	ccd 1	ccd 2	ccd 3	ccd 6
grade 0 events	1231	1270	1375	1328	1379
	3%	3%	3%	3%	3%
grade 1 events	31	24	16	22	16
	0%	0%	0%	0%	0%
grade 2 events	853	837	833	709	872
	2%	2%	2%	1%	2%
grade 3 events	448	452	377	383	434
	1%	1%	0%	1%	1%
grade 4 events	392	435	373	418	387
	1%	1%	0%	1%	0%
grade 5 events	1113	1244	961	1227	1208
	2%	3%	2%	3%	3%
grade 6 events	655	775	602	631	749
	1%	2%	1%	1%	1%
grade 7 events	32780	30539	36596	31628	34191
	87%	85%	88%	87%	87%

2.2 Compared Parameters

Parameter	Planned	Actual	Parameter	Planned	Actual
Instrument	ACIS	ACIS	Obspar format version number	7	7
Detector	ACIS-01236	ACIS-01236	Obspar file type	PREDICTED	ACTUAL
Grating	NONE	NONE	Obspar update status	NONE	UPDATED
Data mode	VFAINT	VFAINT	Number of optional ACIS chips dropped	0	0
Observation mode	POINTING	POINTING	On-chip summing requested	N	N
[deg] Pointing RA	216.925274	216.9536547040696	Subarray requested	NONE	NONE
[deg] Pointing Dec	33.462787	33.47658715366798	Alternating exposures requested	N	N
[deg] Pointing Roll	0.012781	0.2057736124597602	[s] Primary exposure time	0.000000	3.1
[mm] SIM focus pos	-0.782348	-0.7809083437167272			
[mm] SIM defocus	0	0.001439871863259334			
[mm] SIM translation stage pos	-233.592463	-233.5874344608287			
[mm] SIM translation stage offset	0	-0.005018542100998502			
[s] Observation start time (MET)	279020450.184000	279019446.30729			
Observation start date	2006-11-04T09:39:45	2006-11-04T09:24:06			
[s] Observation end time (MET)	279025450.184000	279025584.00757			
Observation end date	2006-11-04T11:03:05	2006-11-04T11:06:24			
Read mode	TIMED	TIMED			

2.3 Aspect



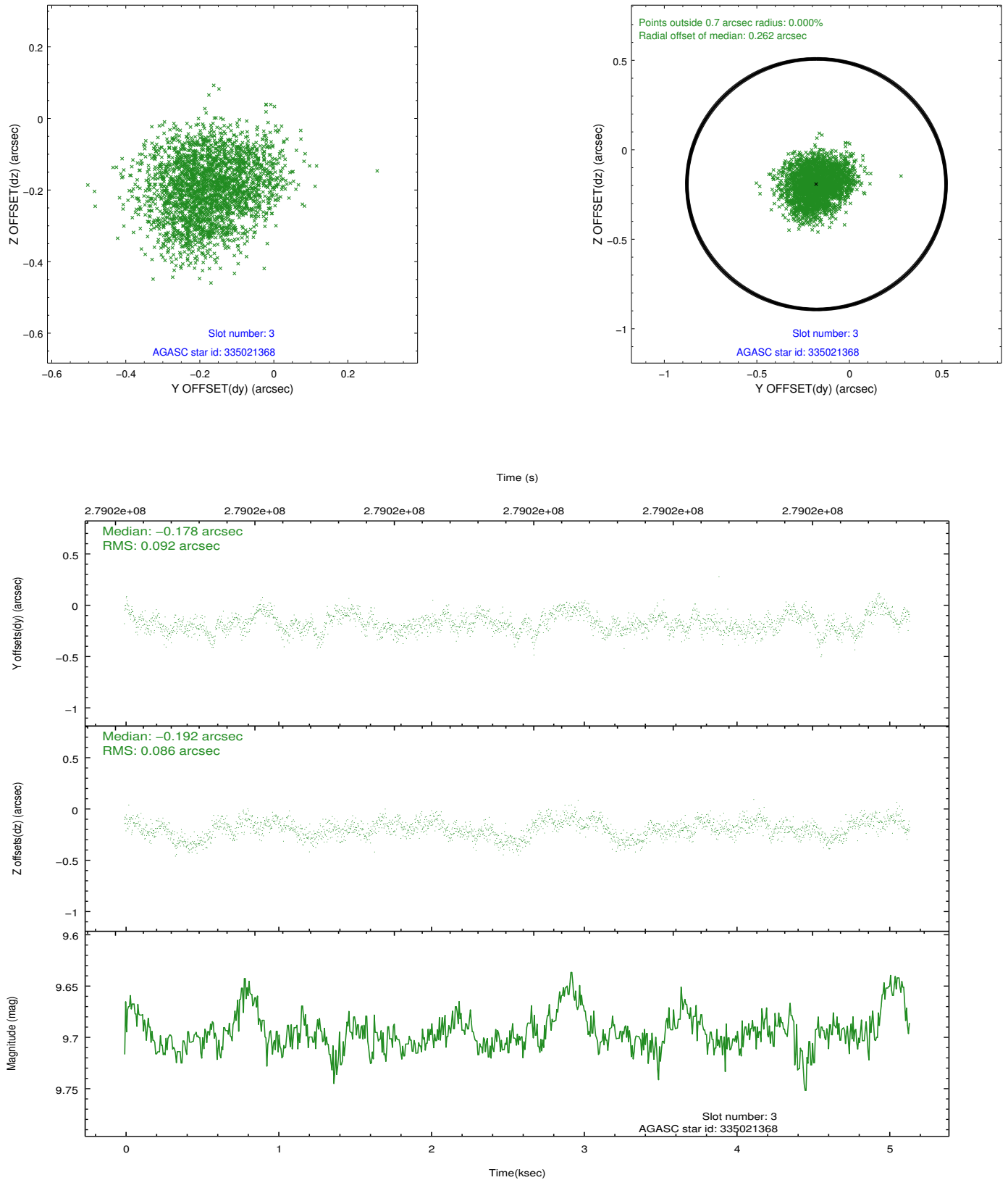


Slot Statistics

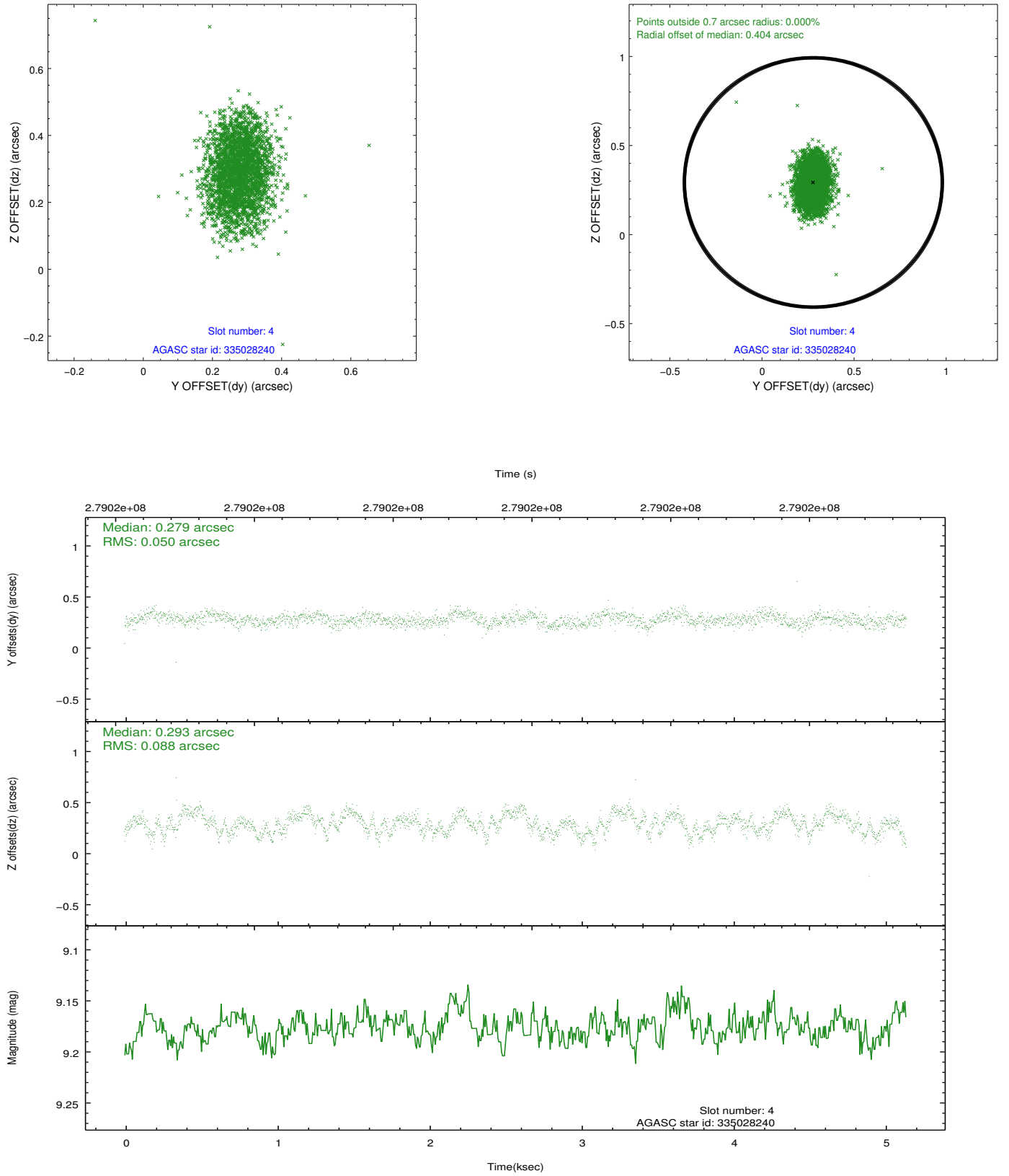
slot	status	id	mag	n_pts	med_dy	med_dz	dr1	dr2	ra	dec	mean_y	mean_z
0	FID	ACIS-I-1	7.24	1254	0.070	-0.041	0.009	0.016	0.000000	0.000000	930.79	-835.72
1	FID	ACIS-I-5	7.23	1254	-0.214	0.071	0.006	0.011	0.000000	0.000000	-1816.91	1061.34
2	FID	ACIS-I-6	7.24	1254	0.054	0.042	0.010	0.017	0.000000	0.000000	395.08	1707.11
3	GUIDE	335021368	9.70	2505	-0.178	-0.192	0.136	0.208	217.529643	33.934817	1805.26	1704.61
4	GUIDE	335028240	9.18	2508	0.279	0.293	0.107	0.175	216.746851	33.385009	-535.67	-277.98
5	GUIDE	335028696	9.17	2507	-0.267	-0.234	0.103	0.162	217.260519	33.844112	1002.13	1374.30
6	GUIDE	335029808	9.08	2509	0.201	-0.015	0.075	0.119	216.789548	33.180488	-408.43	-1015.05
7	GUIDE	335022112	9.22	2505	-0.034	0.155	0.111	0.177	216.659296	32.794758	-805.16	-2404.10

2.4 Star Slots

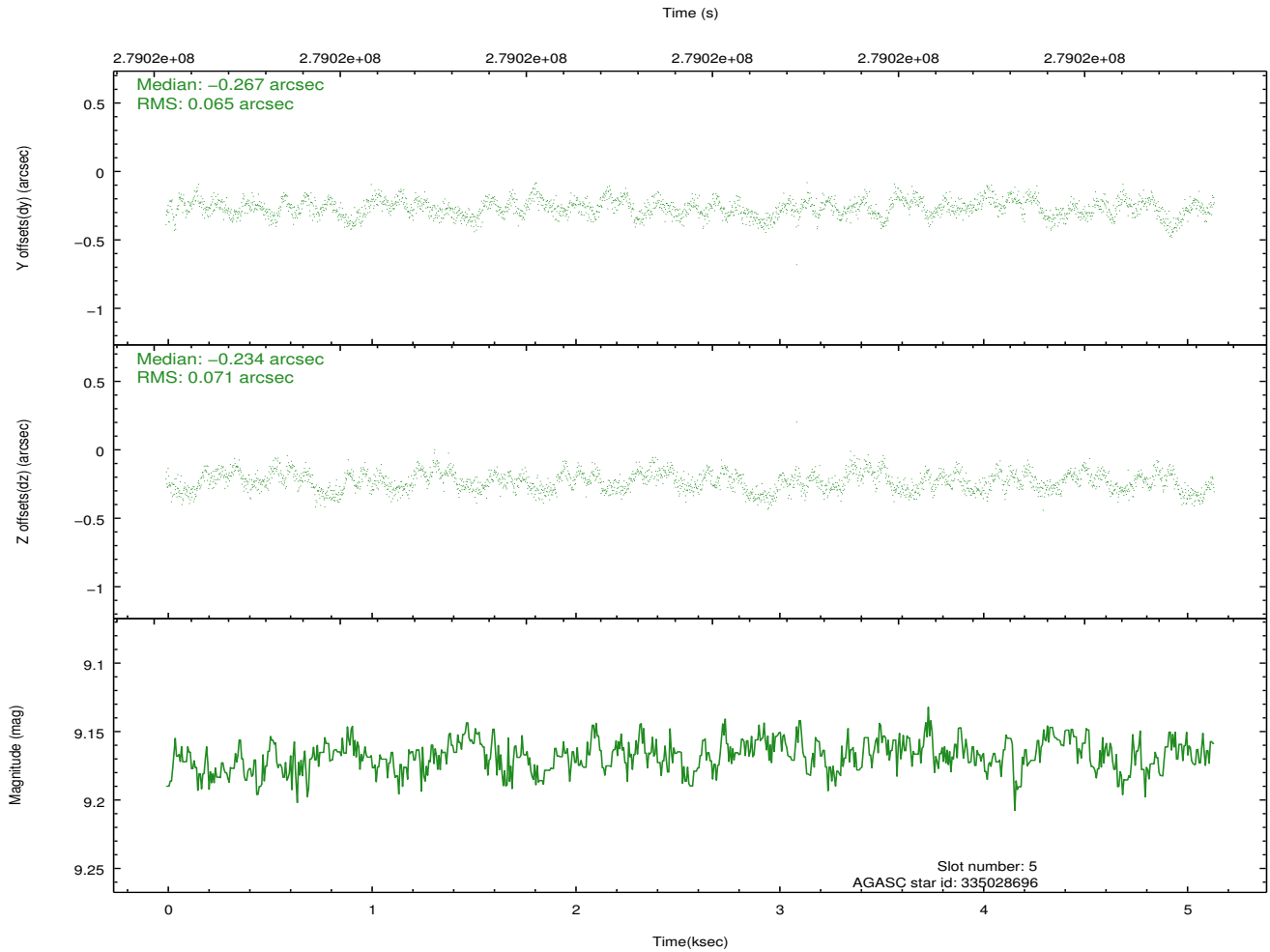
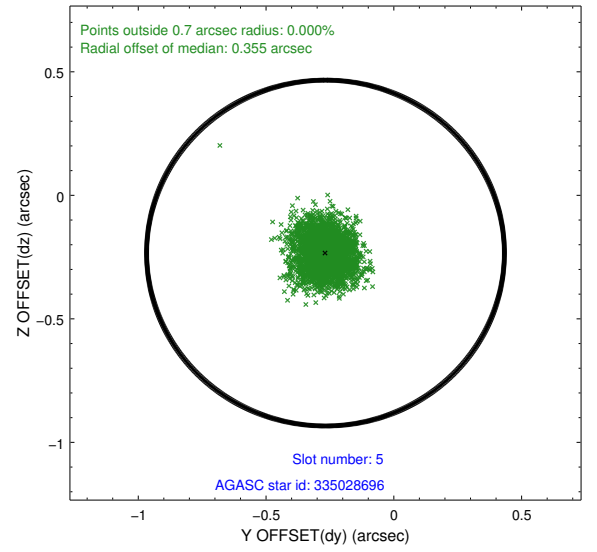
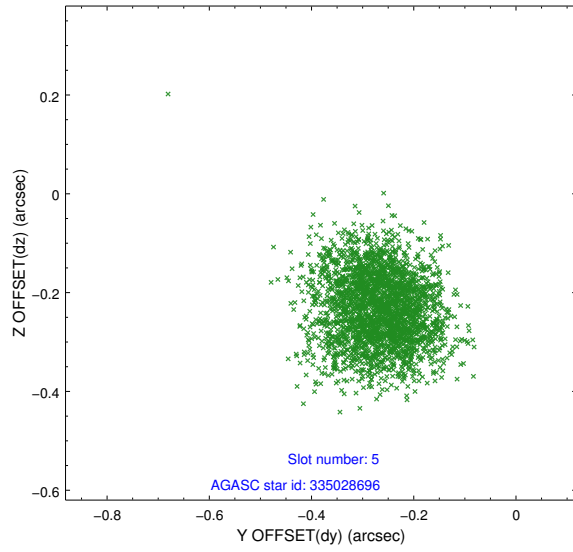
2.4.1 Slot 3



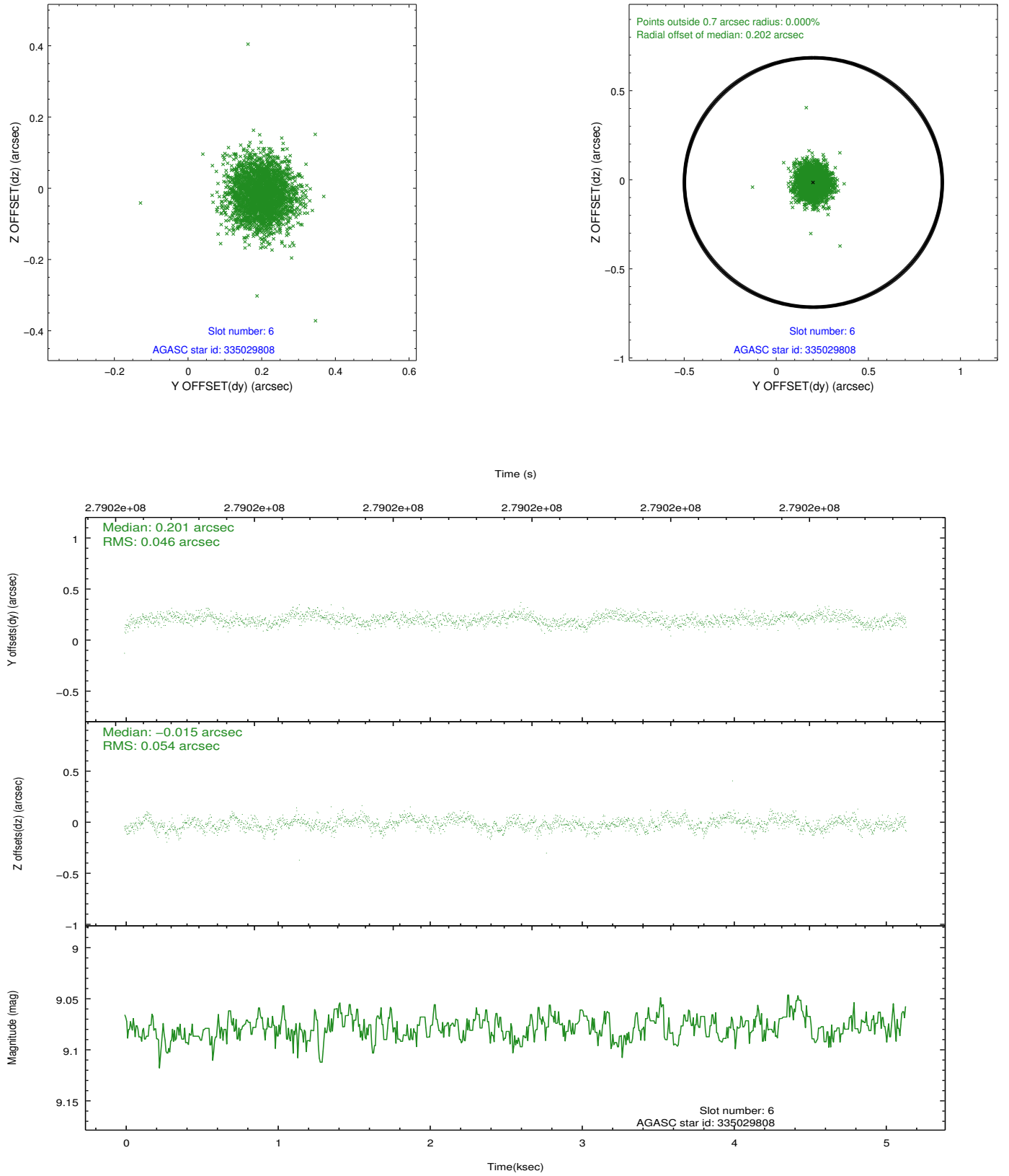
2.4.2 Slot 4



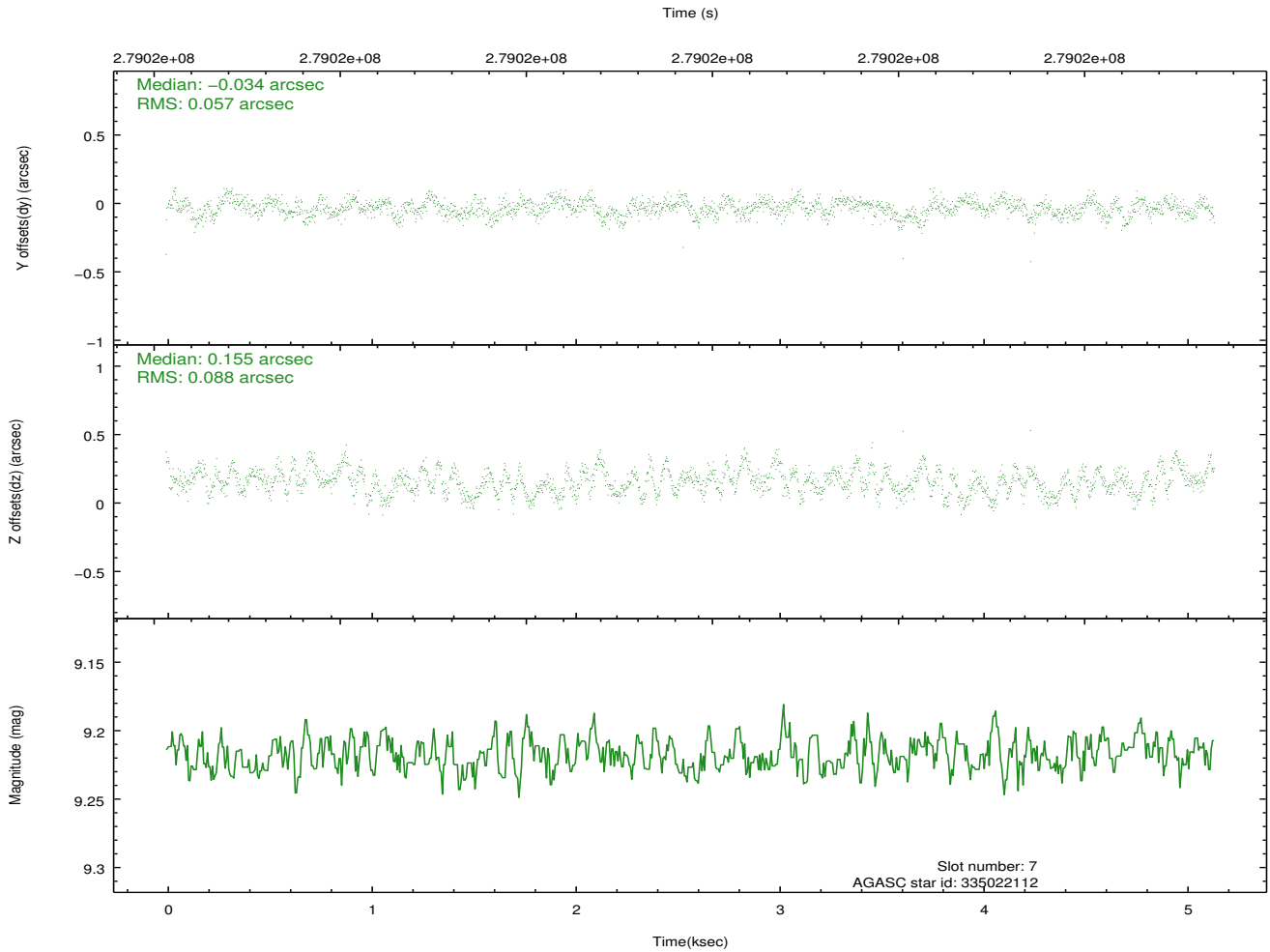
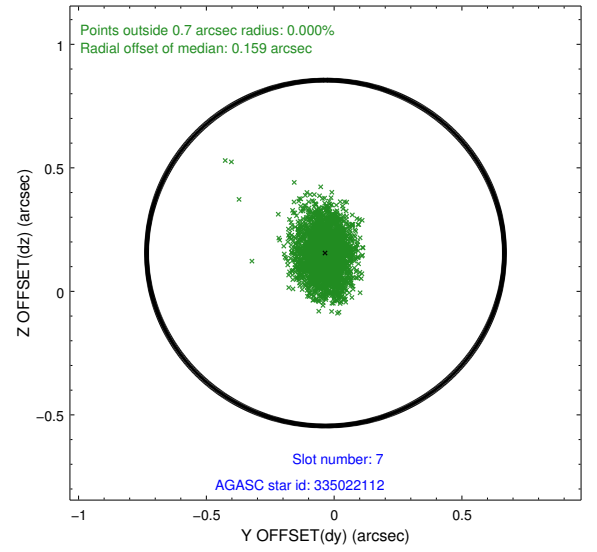
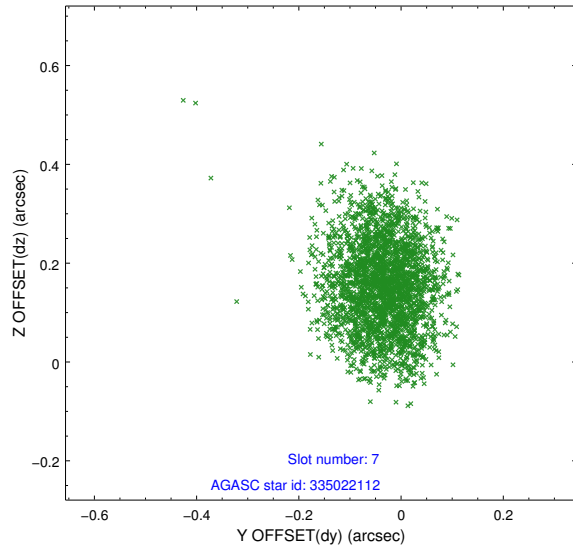
2.4.3 Slot 5



2.4.4 Slot 6

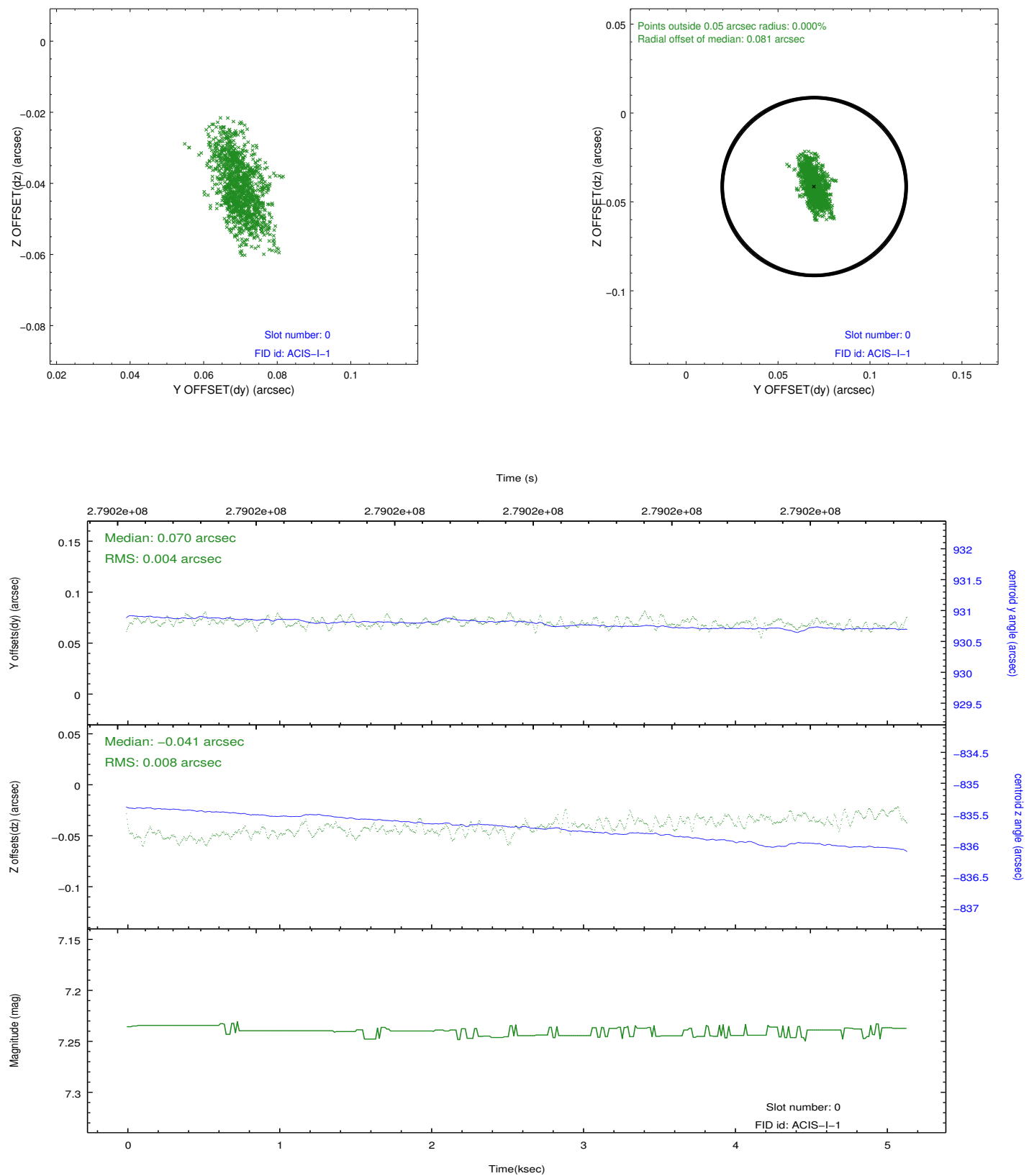


2.4.5 Slot 7

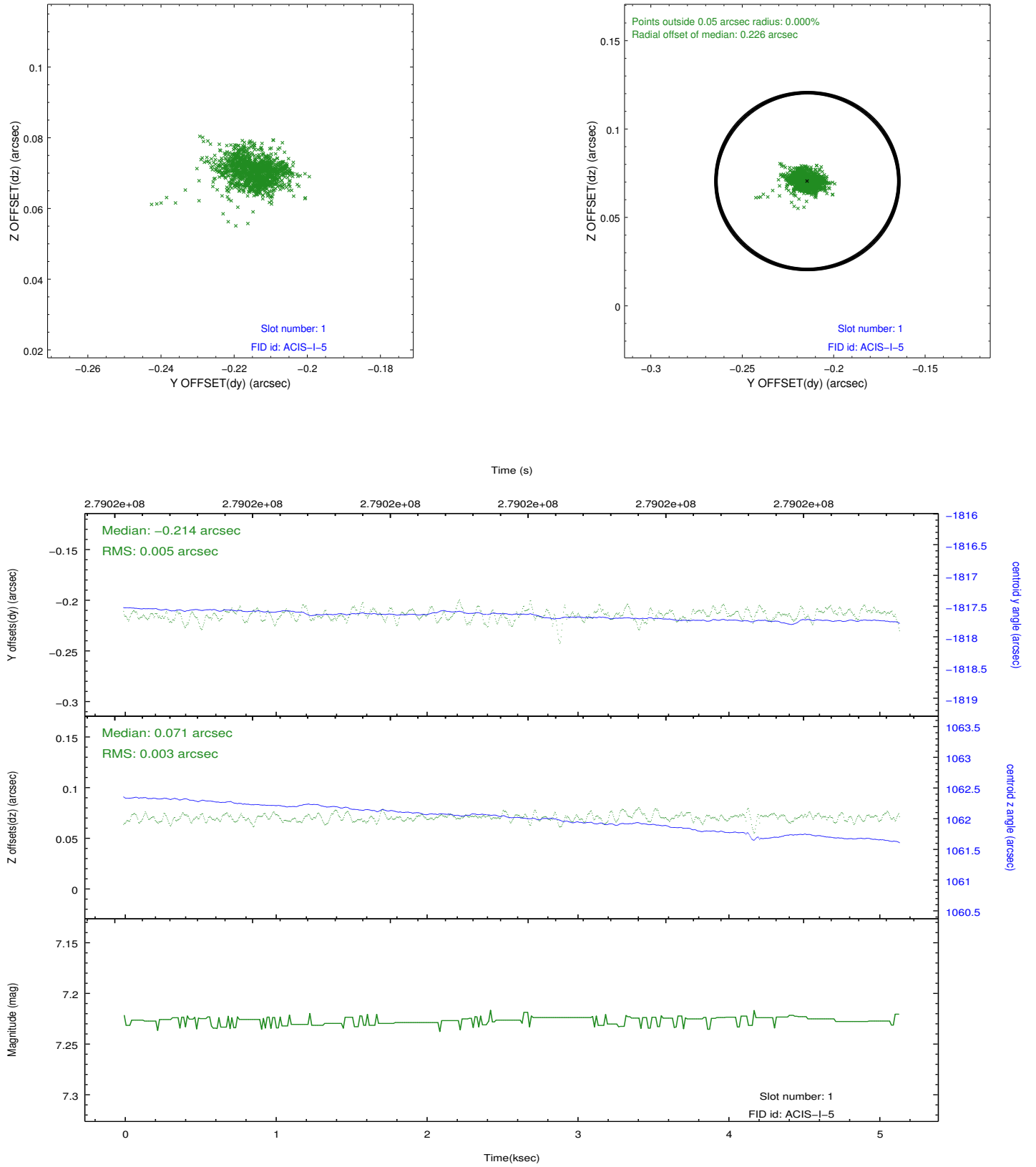


2.5 FID Slots

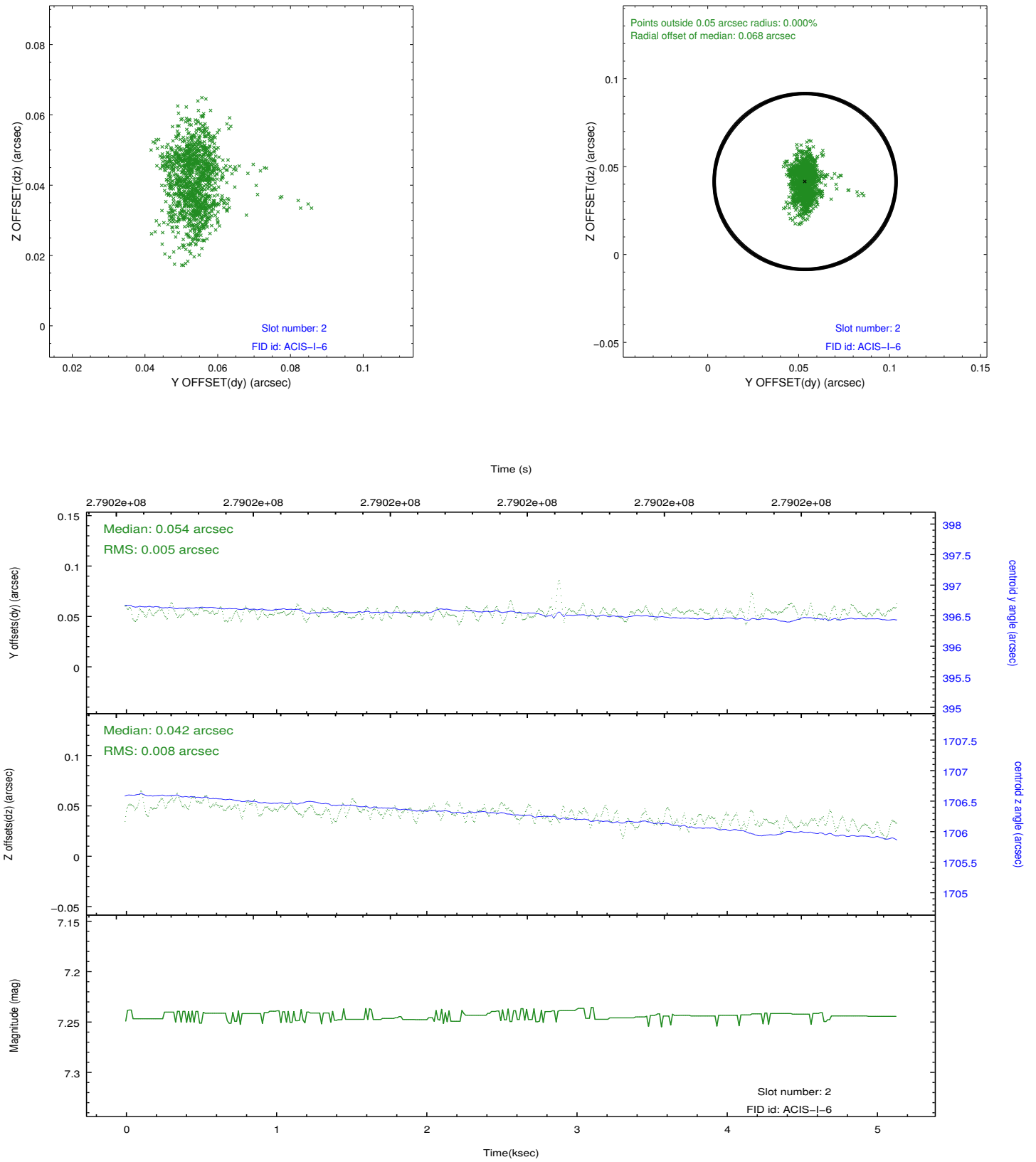
2.5.1 Slot 0



2.5.2 Slot 1



2.5.3 Slot 2



A Summary

A.1 Status

V&V Scientist	Beth Sundheim
V&V Date (YYYY-MM-DD)	2012.04.13
V&V Edition	1
V&V Disposition and Status	OK
V&V Charge Time	5.13360003

A.2 Comments