

V&V Reference Report

L2 ASCDS Version : 8.4.3.1

Observation 7234 - L2 Version 2
Chandra X-Ray Center

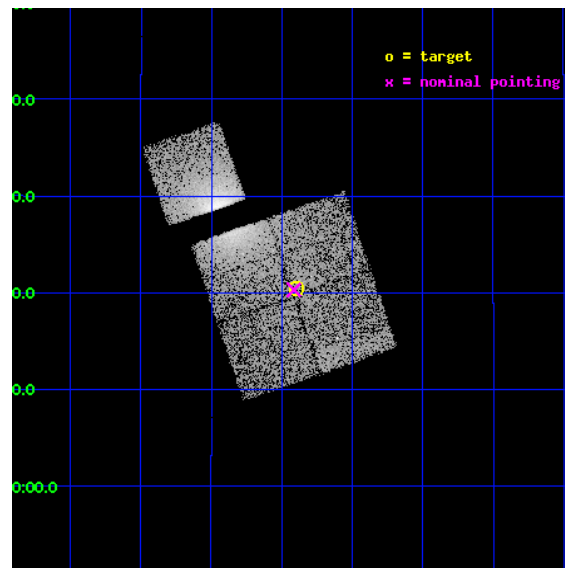
L2 Processing Date : Mar 18 2012

Contents

1	Front	2
2	OBI	3
2.1	OBI	3
2.1.1	Images	3
2.1.2	Bias	3
2.1.3	Parameters	4
2.1.4	Events	4
2.2	Compared Parameters	5
2.3	Aspect	6
2.4	Star Slots	9
2.4.1	Slot 3	9
2.4.2	Slot 4	10
2.4.3	Slot 5	11
2.4.4	Slot 6	12
2.4.5	Slot 7	13
2.5	FID Slots	14
2.5.1	Slot 0	14
2.5.2	Slot 1	15
2.5.3	Slot 2	16
A	Summary	17
A.1	Status	17
A.2	Comments	17

1 Front

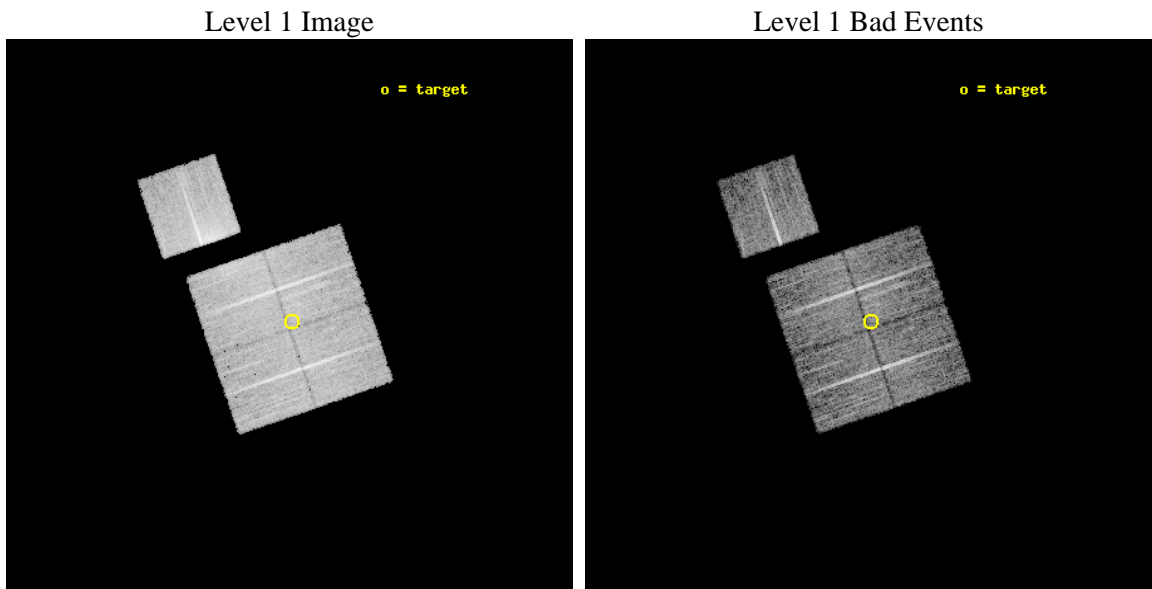
seq_num	800562	Sequence number
obs_id	7234	Observation id
title	Temperature profiles of relaxed galaxy clusters	Proposal title
observer	Dr Stephen Murray	Principal investigator
object	A478_OFFSET2	Source name
dtcycle	0	
cycle	P	events from which exps? Prim/Second/Both
ra_targ	63.225	Observer's specified target RA [deg]
dec_targ	10.341667	Observer's specified target Dec [deg]
ra_nom	63.228530246845	Nominal RA [deg]
dec_nom	10.338569007374	Nominal Dec [deg]
roll_nom	341.10796801652	Nominal Roll [deg]
revision	2	Processing version of data
ontime	8974.4590024054	Sum of GTIs [s]
livetime	8857.2010886384	Livetime [s]
ontime0	8974.459002465	Sum of GTIs [s]
ontime1	8977.5999827087	Sum of GTIs [s]
ontime2	8974.4589825273	Sum of GTIs [s]
ontime3	8974.4590024054	Sum of GTIs [s]
ontime6	8977.5999827087	Sum of GTIs [s]
l2events	43126	Number of level 2 events



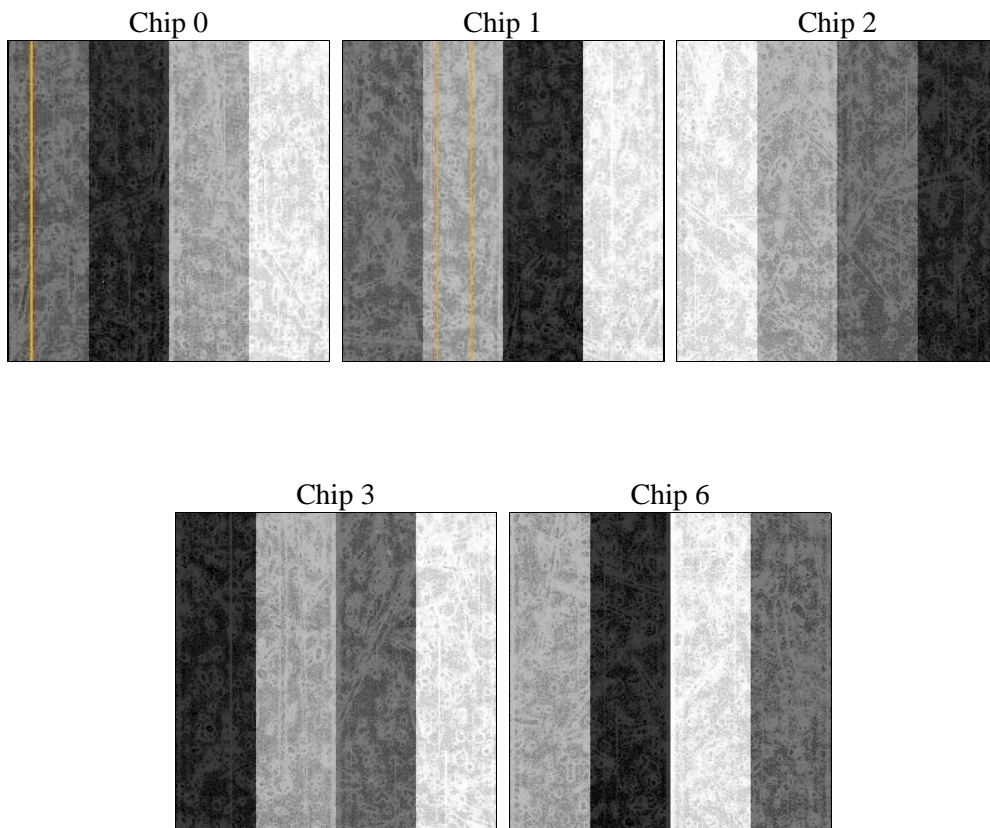
2 OBI

2.1 OBI

2.1.1 Images



2.1.2 Bias



2.1.3 Parameters

obi_num	0	Obi number	sched_exp_time	8800.000000	[s] Scheduled observation exposure time
ascdsver	8.4.3	Processing system revision	ontime	8974.4590024054	Sum of GTIs [s]
caldsver	4.4.8	 	ontime0	8974.459002465	Sum of GTIs [s]
date	2012-03-18T08:24:52	Date and time of file creation	ontime1	8977.5999827087	Sum of GTIs [s]
revision	2	Processing version of data	ontime2	8974.4589825273	Sum of GTIs [s]
			ontime3	8974.4590024054	Sum of GTIs [s]
			ontime6	8977.5999827087	Sum of GTIs [s]
			l1events	329204	Number of level 1 events

2.1.4 Events

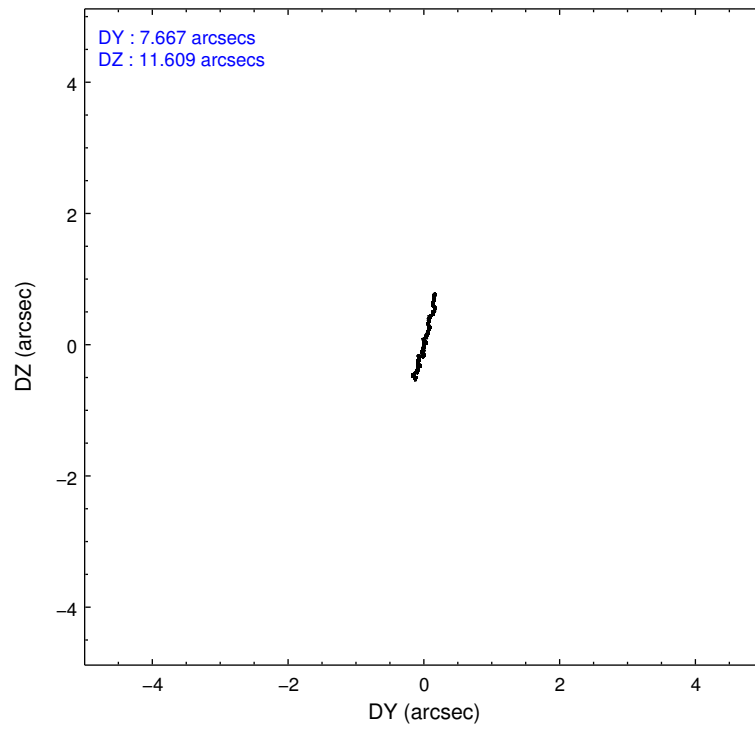
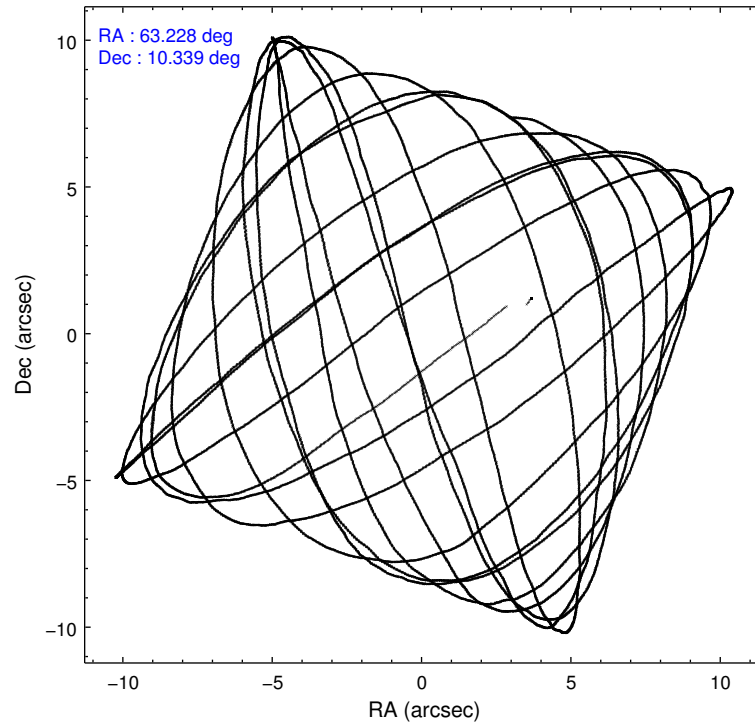
	ccd 0	ccd 1	ccd 2	ccd 3	ccd 6
level 1 events	60891	59578	71815	61997	74923
rejected events	54762	52805	59426	55628	57131
rejected %	89%	88%	82%	89%	76%

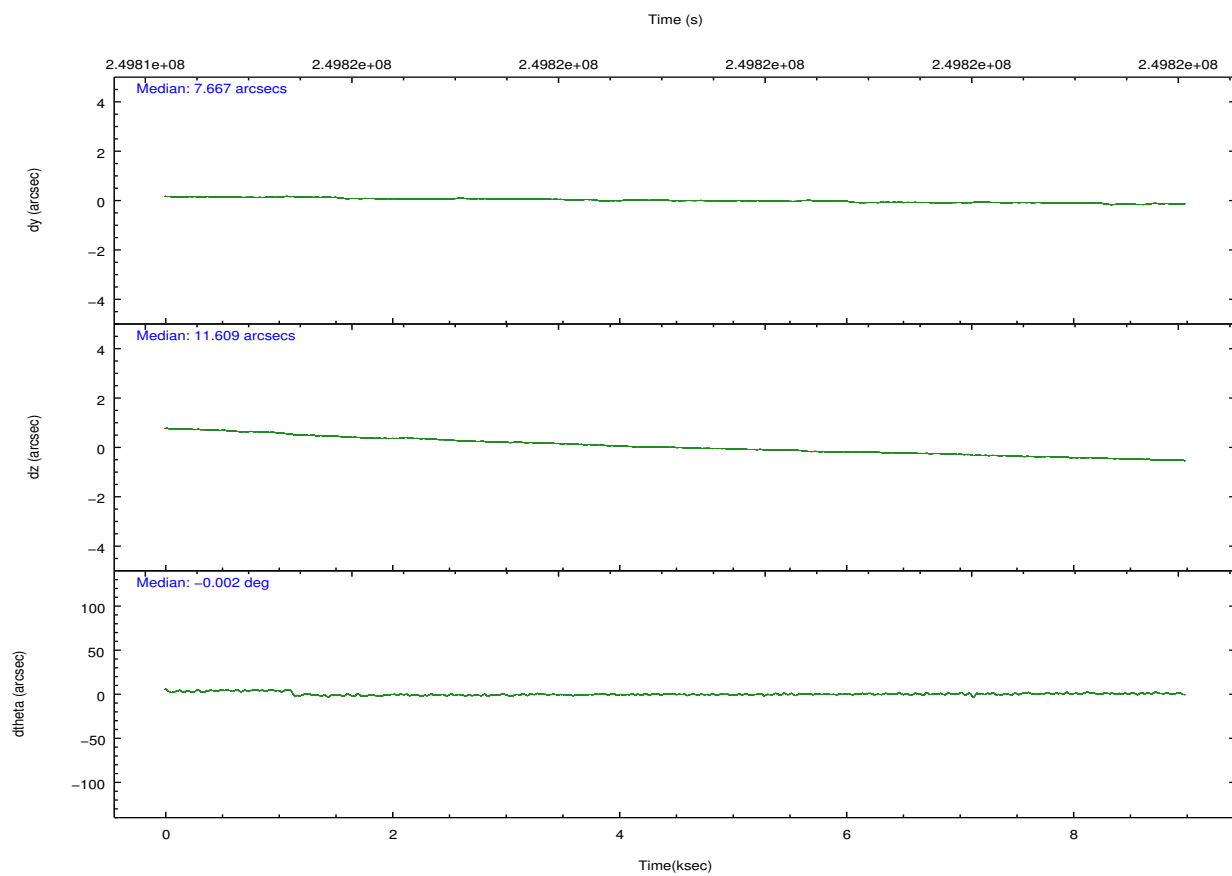
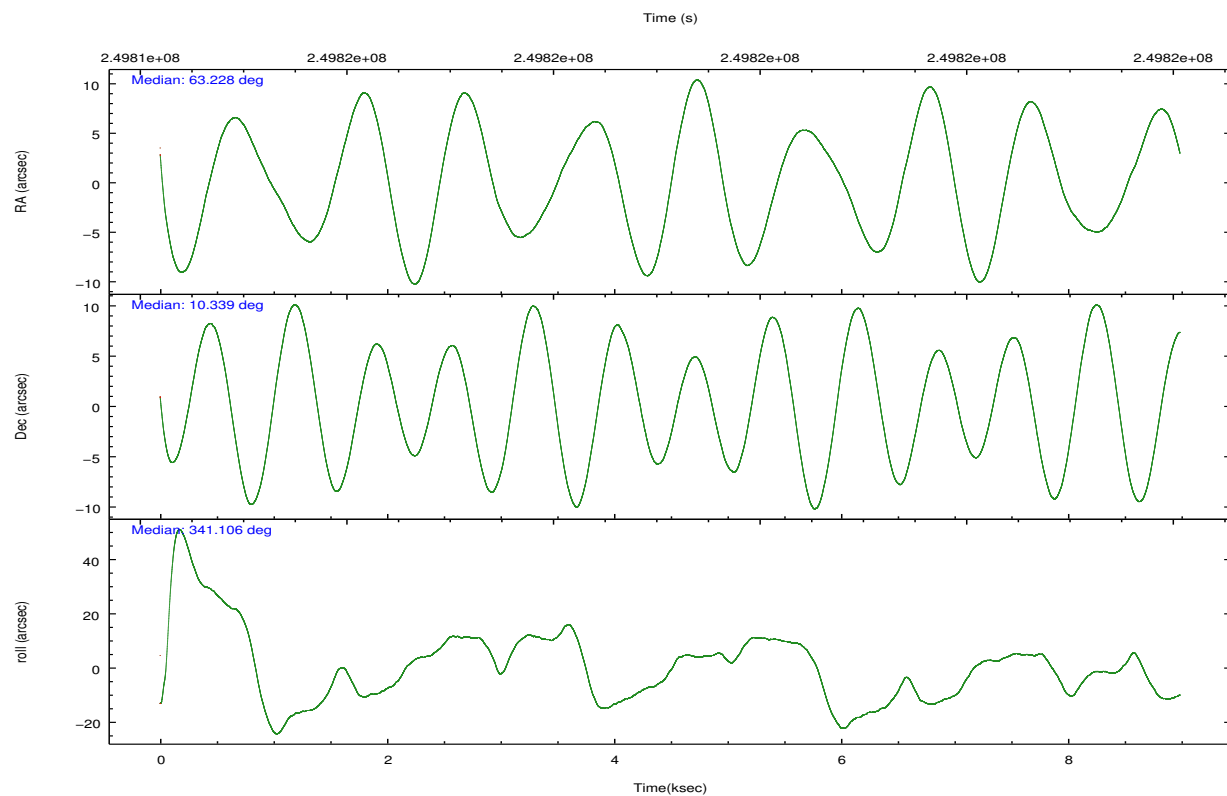
	ccd 0	ccd 1	ccd 2	ccd 3	ccd 6
grade 0 events	2216	2704	7520	2694	11712
	3%	4%	10%	4%	15%
grade 1 events	40	16	50	38	88
	0%	0%	0%	0%	0%
grade 2 events	1548	1529	2189	1363	2609
	2%	2%	3%	2%	3%
grade 3 events	721	783	855	741	1127
	1%	1%	1%	1%	1%
grade 4 events	690	773	896	699	1145
	1%	1%	1%	1%	1%
grade 5 events	2127	2365	2019	2495	2567
	3%	3%	2%	4%	3%
grade 6 events	1236	1339	1303	1176	1753
	2%	2%	1%	1%	2%
grade 7 events	52313	50069	56983	52791	53922
	85%	84%	79%	85%	71%

2.2 Compared Parameters

Parameter	Planned	Actual	Parameter	Planned	Actual
Instrument	ACIS	ACIS	Obspar format version number	7	7
Detector	ACIS-01236	ACIS-01236	Obspar file type	PREDICTED	ACTUAL
Grating	NONE	NONE	Obspar update status	NONE	UPDATED
Data mode	VFAINT	VFAINT	Number of optional ACIS chips dropped	0	0
Observation mode	POINTING	POINTING	On-chip summing requested	N	N
[deg] Pointing RA	63.201219	63.22853024684532	Subarray requested	NONE	NONE
[deg] Pointing Dec	10.333193	10.33856900737443	Alternating exposures requested	N	N
[deg] Pointing Roll	340.904268	341.1079680165209	[s] Primary exposure time	0.000000	3.1
[mm] SIM focus pos	-0.782348	-0.7809083437167272			
[mm] SIM defocus	0	0.001439871863259334			
[mm] SIM translation stage pos	-233.592463	-233.5874344608287			
[mm] SIM translation stage offset	0	-0.005018542100998502			
[s] Observation start time (MET)	249814821.184000	249813552.09346			
Observation start date	2005-12-01T08:59:17	2005-12-01T08:39:12			
[s] Observation end time (MET)	249823621.184000	249824707.68148			
Observation end date	2005-12-01T11:25:57	2005-12-01T11:45:07			
Read mode	TIMED	TIMED			

2.3 Aspect



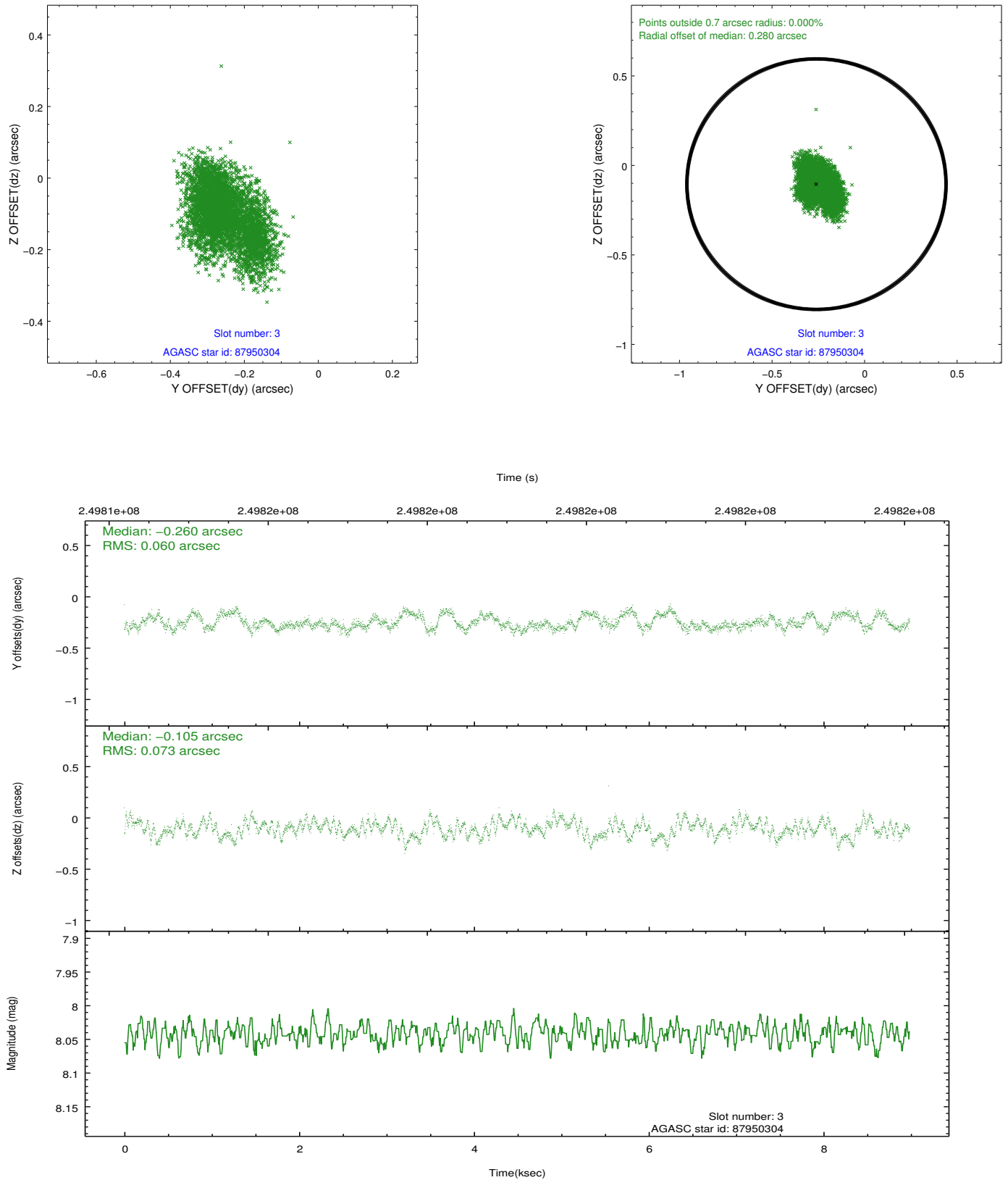


Slot Statistics

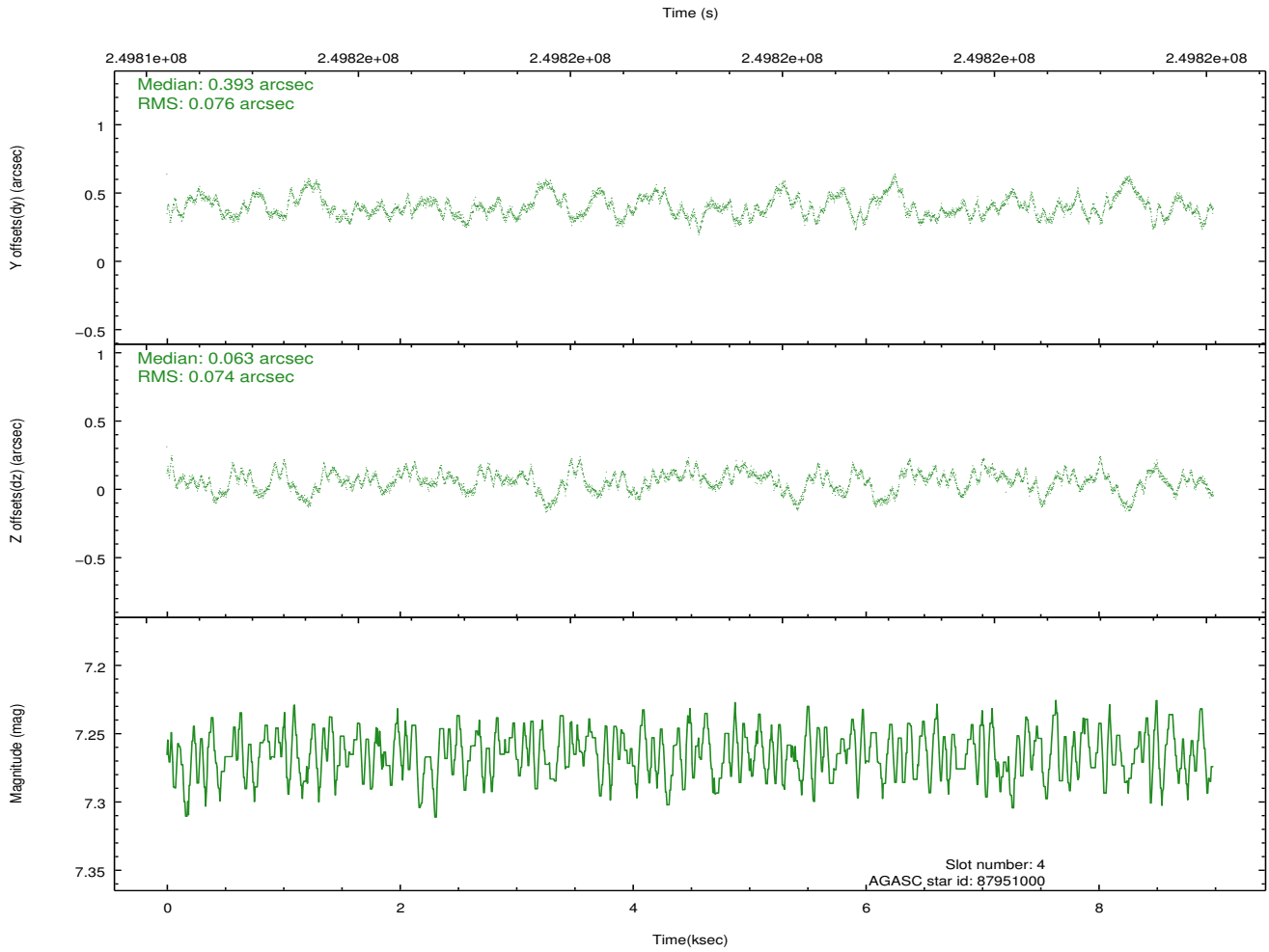
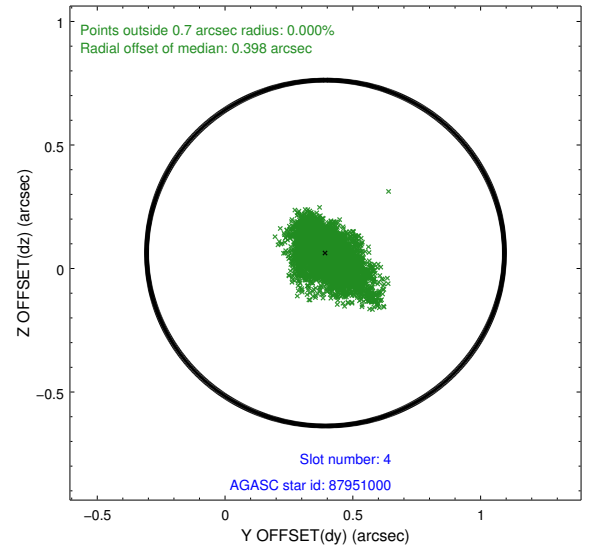
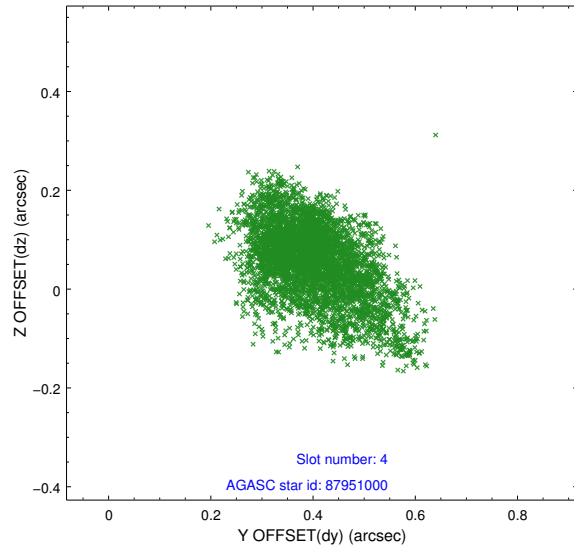
slot	status	id	mag	n_pts	med_dy	med_dz	dr1	dr2	ra	dec	mean_y	mean_z
0	FID	ACIS-I-2	7.14	2192	-0.088	-0.114	0.019	0.040	0.000000	0.000000	-762.28	-841.64
1	FID	ACIS-I-4	7.18	2192	0.168	0.085	0.013	0.022	0.000000	0.000000	2151.77	1064.40
2	FID	ACIS-I-5	7.22	2192	-0.180	0.098	0.015	0.029	0.000000	0.000000	-1815.40	1062.99
3	GUIDE	87950304	8.04	4384	-0.260	-0.105	0.102	0.163	63.753878	10.748130	1357.83	2052.68
4	GUIDE	87951000	7.26	4384	0.393	0.063	0.108	0.190	63.643091	10.701386	1043.99	1765.67
5	GUIDE	87953912	6.67	4384	-0.115	0.027	0.126	0.235	63.394036	10.212467	788.20	-186.51
6	GUIDE	87954016	9.29	4383	-0.132	-0.061	0.099	0.166	63.197646	10.607026	-333.98	927.22
7	BAD	87955344	10.54	4032	0.125	0.075	0.367	0.664	63.321713	10.049181	739.03	-825.73

2.4 Star Slots

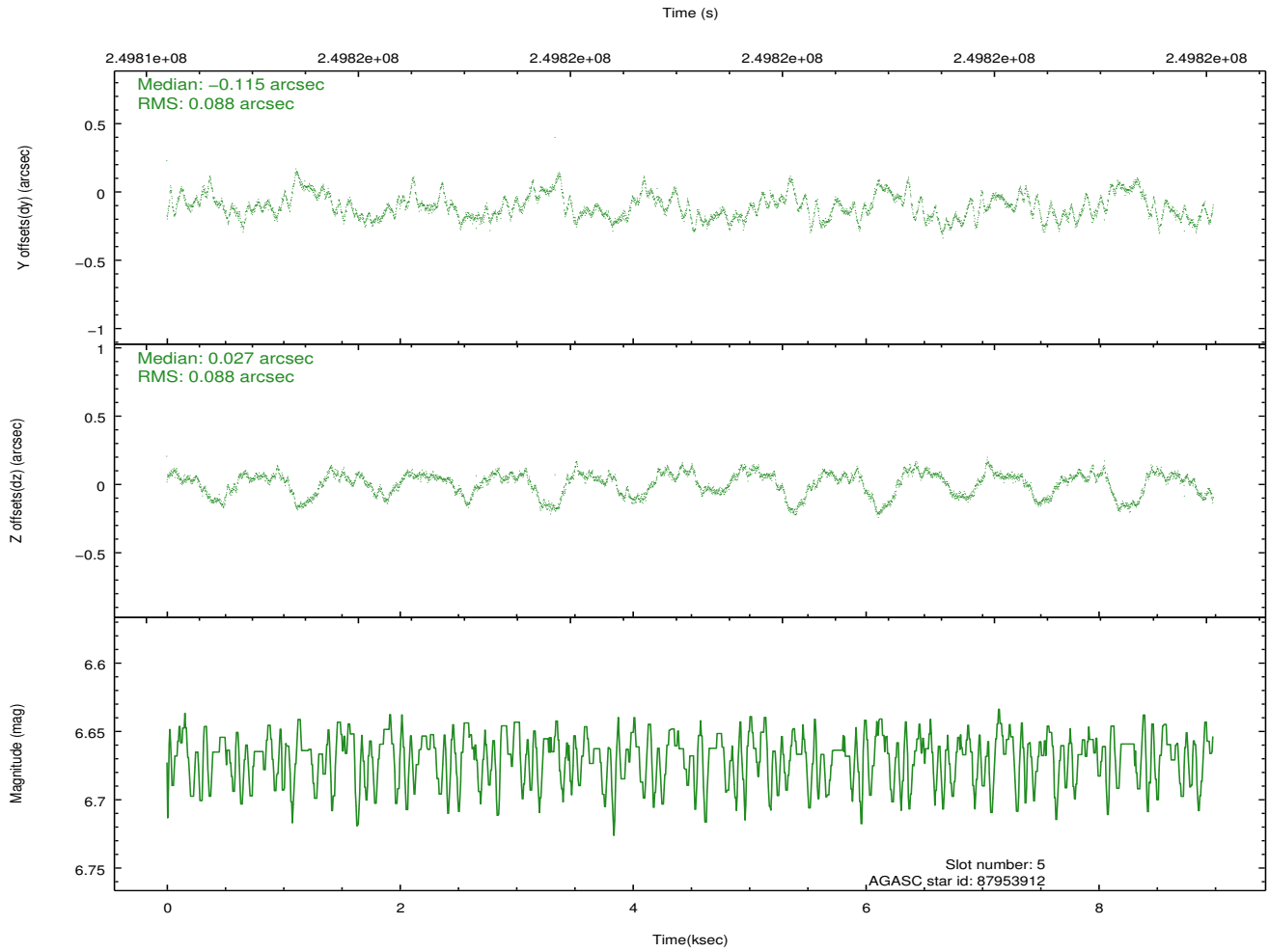
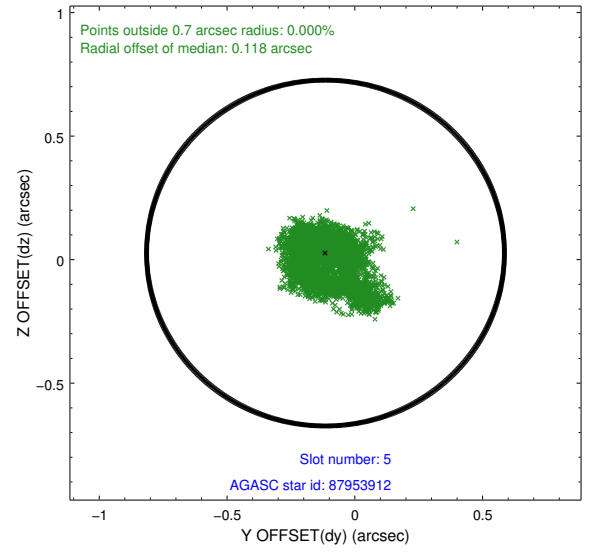
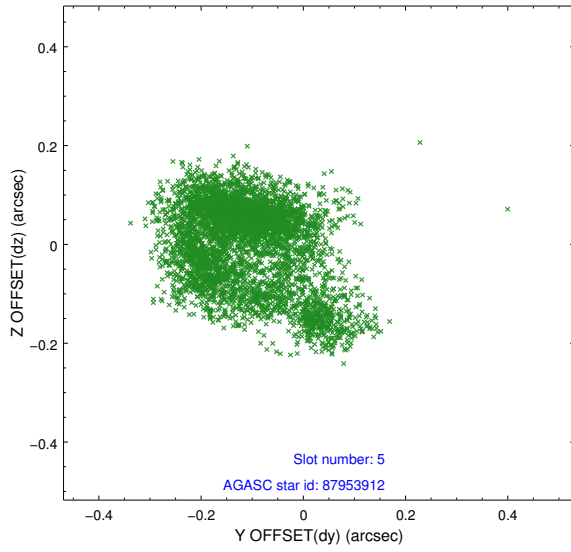
2.4.1 Slot 3



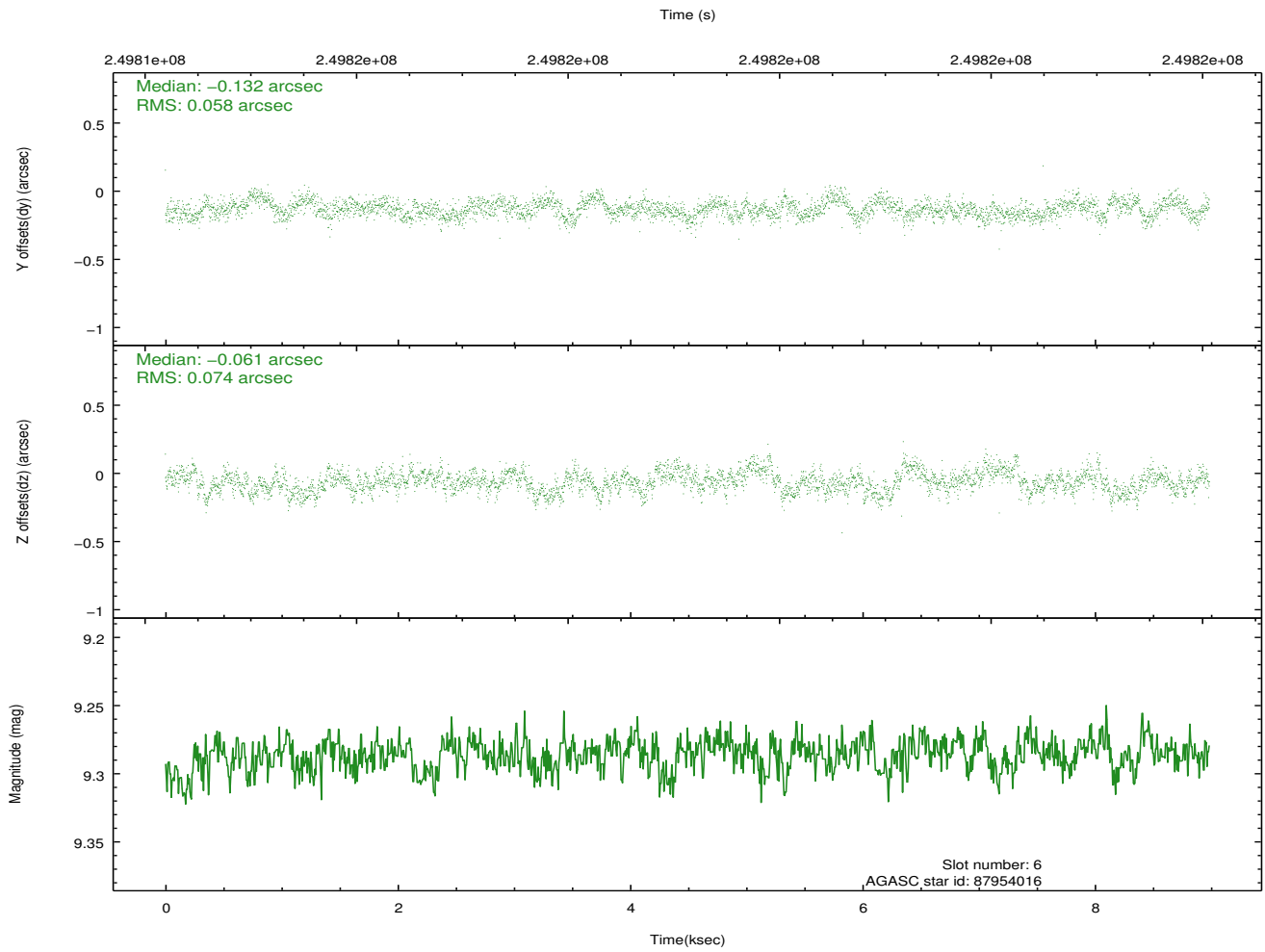
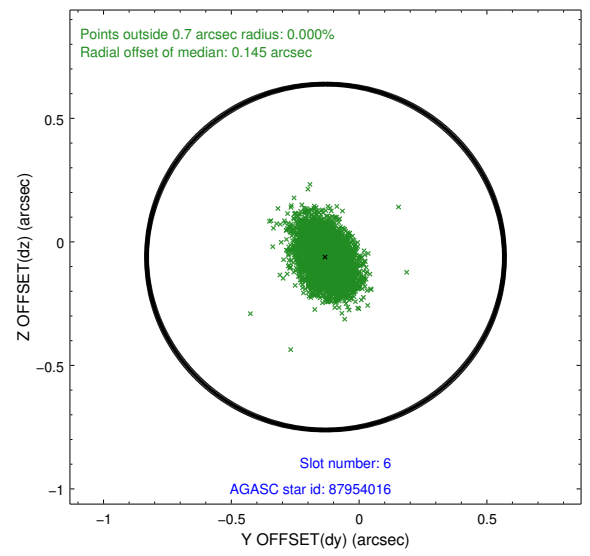
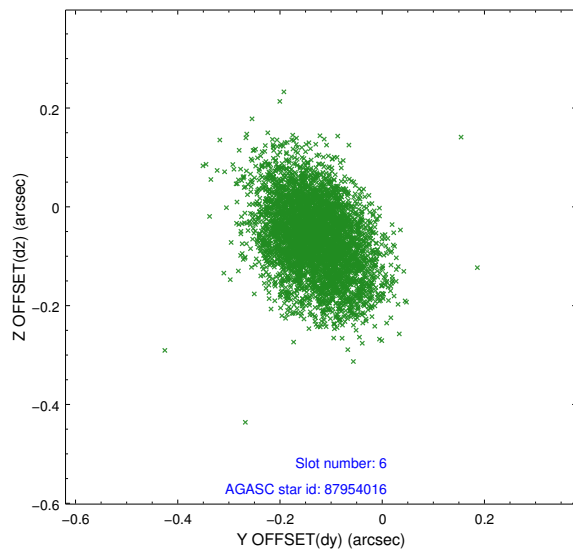
2.4.2 Slot 4



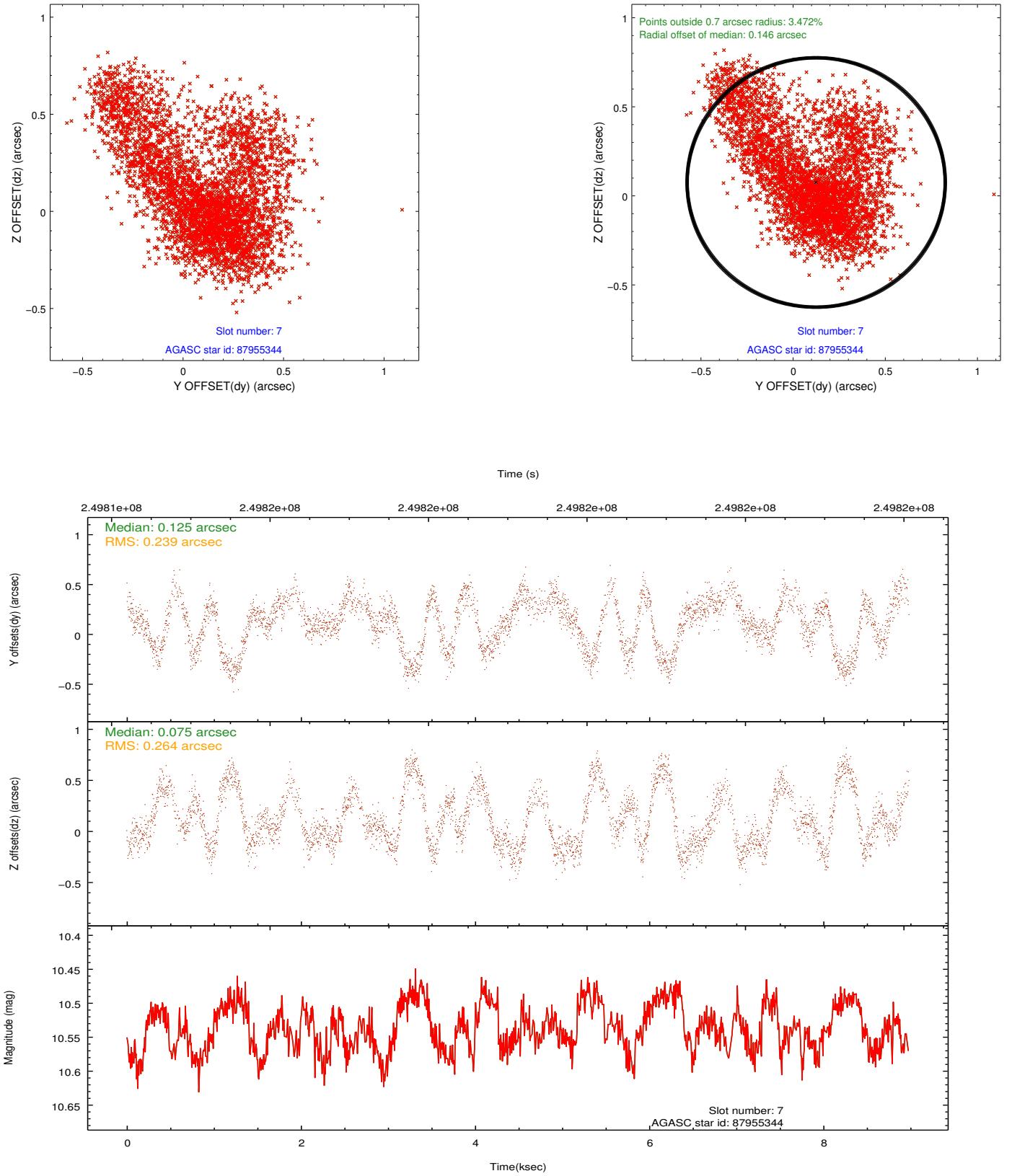
2.4.3 Slot 5



2.4.4 Slot 6

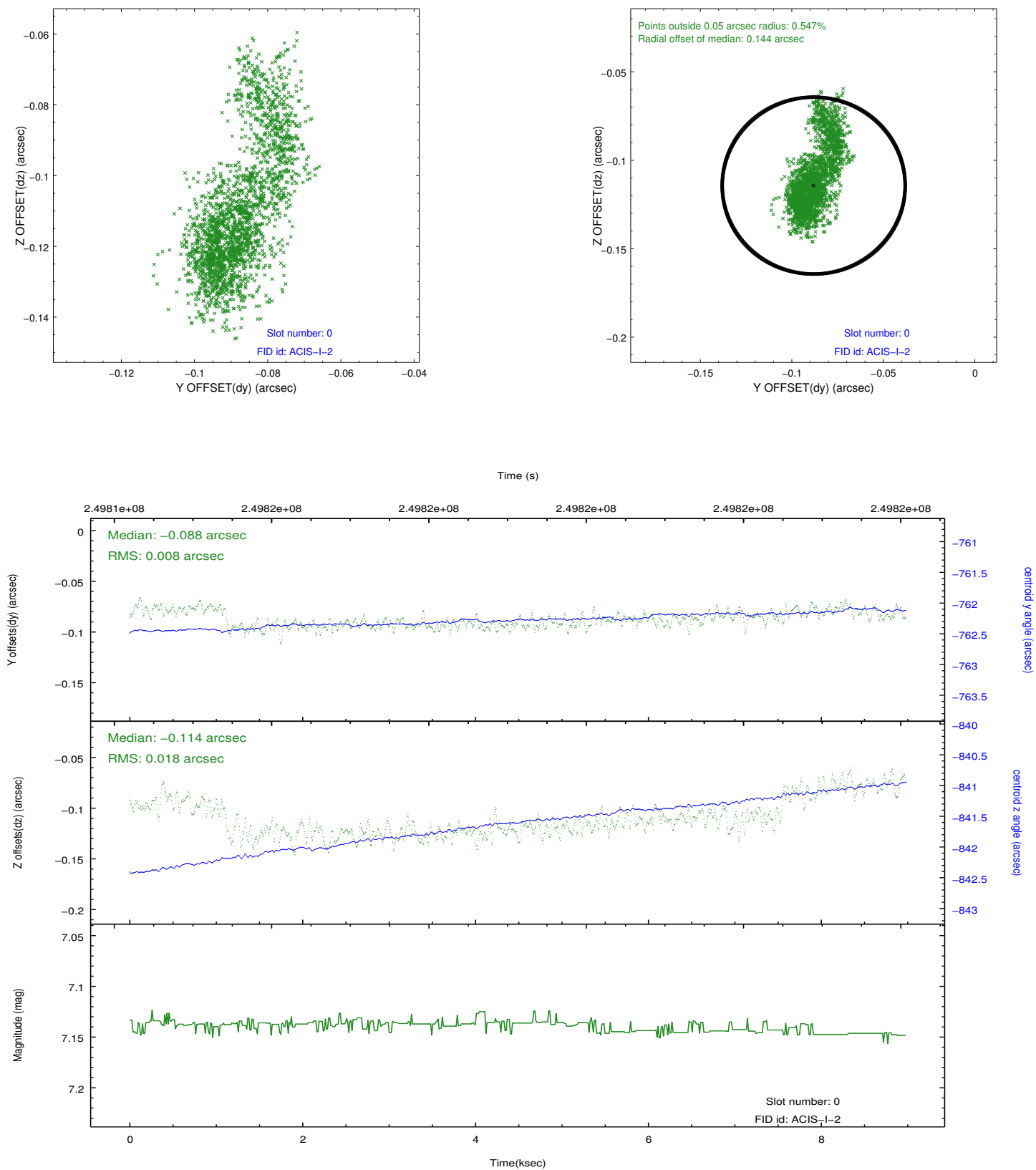


2.4.5 Slot 7

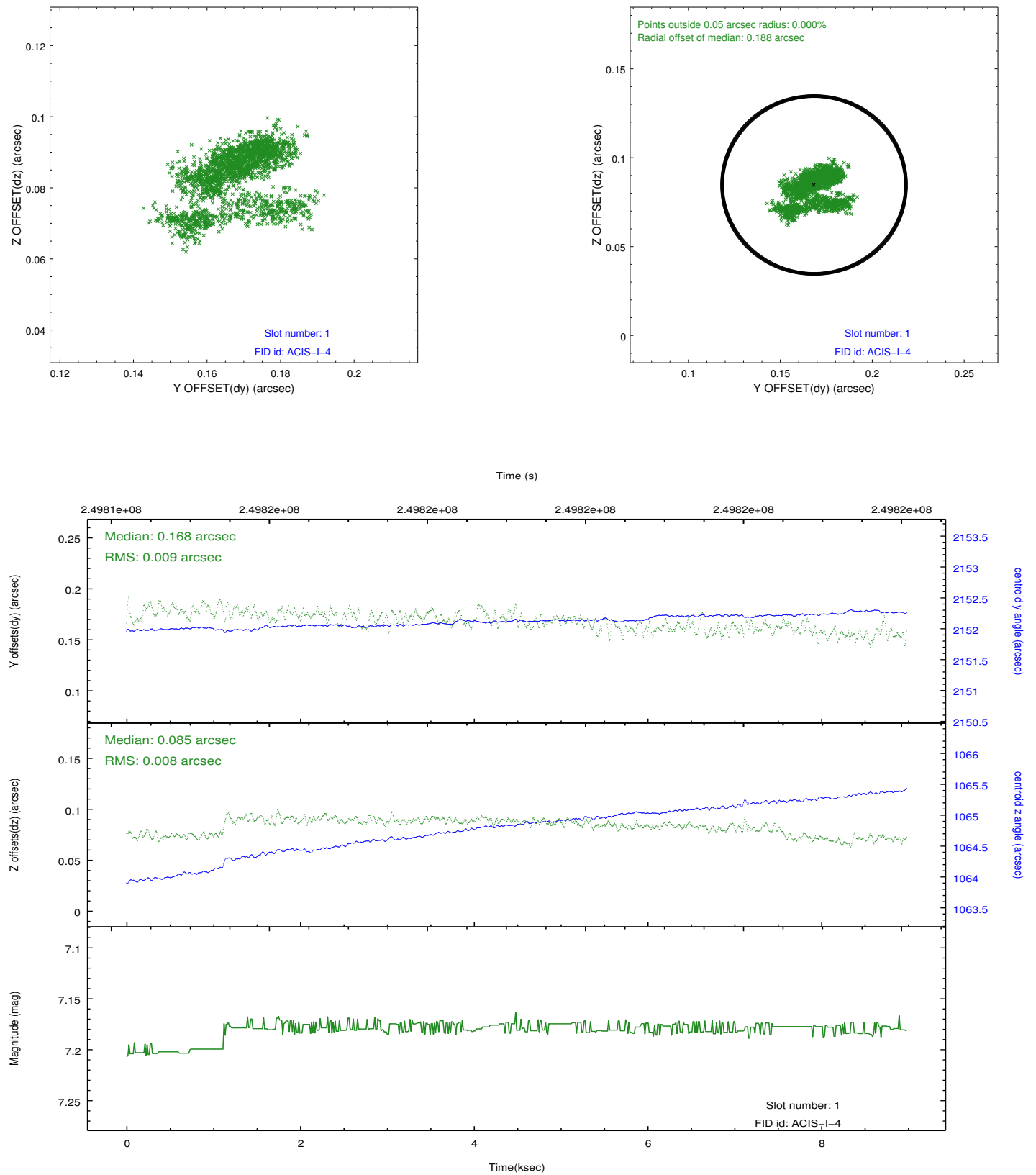


2.5 FID Slots

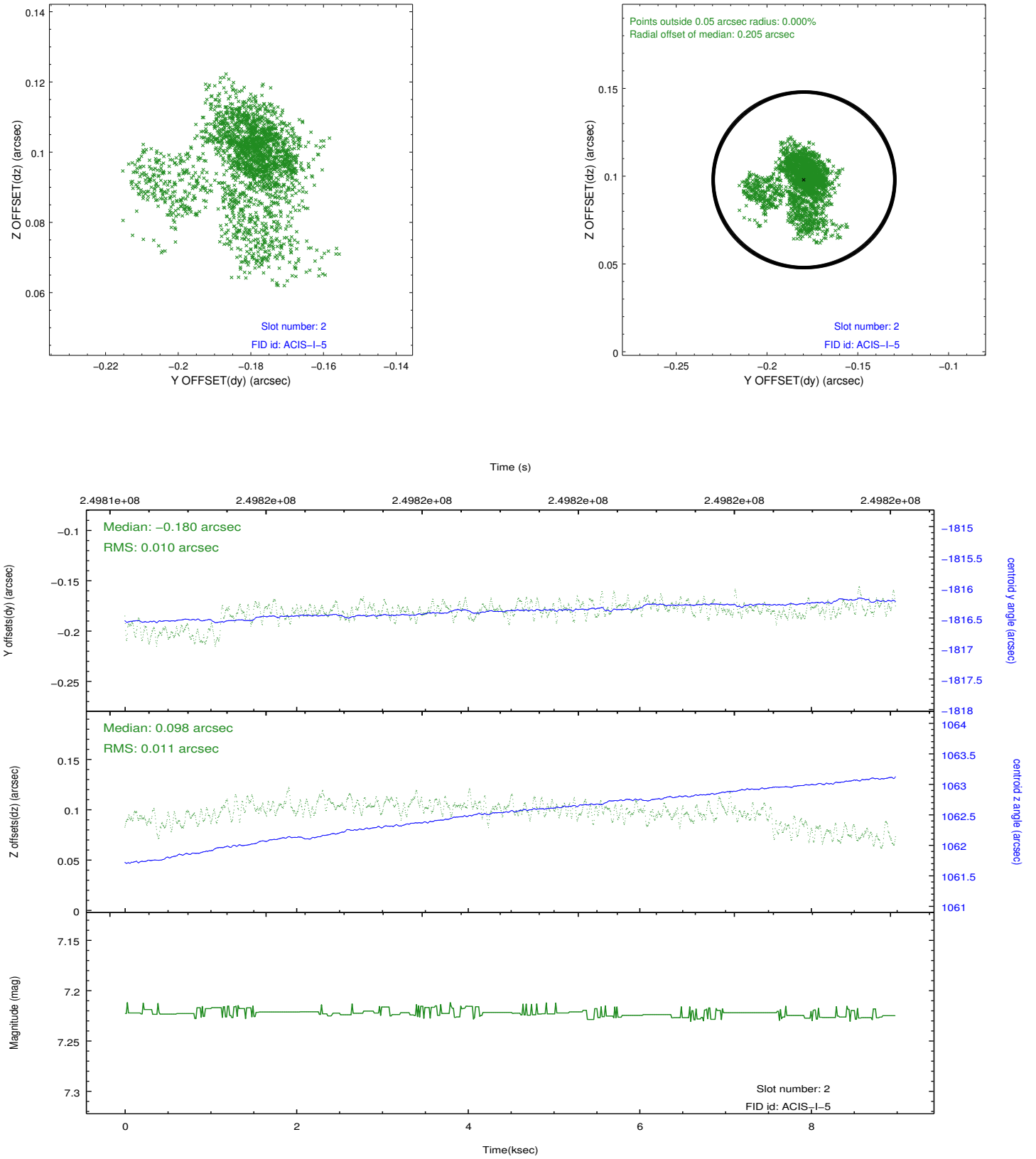
2.5.1 Slot 0



2.5.2 Slot 1



2.5.3 Slot 2



A Summary

A.1 Status

V&V Scientist	Jen Lauer
V&V Date (YYYY-MM-DD)	2012.03.19
V&V Edition	1
V&V Disposition and Status	OK
V&V Charge Time	8.974459

A.2 Comments

Slot 7 not included in aspect solution. A discontinuity in the fid lights is apparent at about 1 ksec into the observation (but is within spec.)