

# V&V Reference Report

## L2 ASCDS Version : 8.4.3.1

Observation 6956 - L2 Version 2  
Chandra X-Ray Center

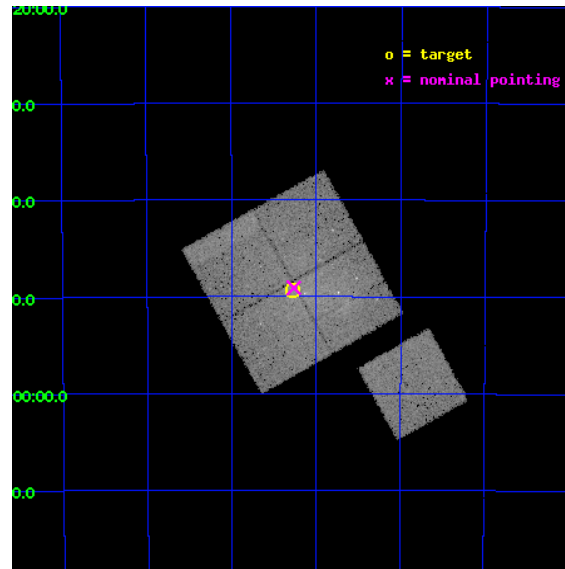
L2 Processing Date : Apr 4 2012

## Contents

<b>1</b>	<b>Front</b>	<b>2</b>
<b>2</b>	<b>OBI</b>	<b>3</b>
2.1	OBI . . . . .	3
2.1.1	Images . . . . .	3
2.1.2	Bias . . . . .	3
2.1.3	Parameters . . . . .	4
2.1.4	Events . . . . .	4
2.2	Compared Parameters . . . . .	5
2.3	Aspect . . . . .	6
2.4	Star Slots . . . . .	9
2.4.1	Slot 3 . . . . .	9
2.4.2	Slot 4 . . . . .	10
2.4.3	Slot 5 . . . . .	11
2.4.4	Slot 6 . . . . .	12
2.4.5	Slot 7 . . . . .	13
2.5	FID Slots . . . . .	14
2.5.1	Slot 0 . . . . .	14
2.5.2	Slot 1 . . . . .	15
2.5.3	Slot 2 . . . . .	16
<b>A</b>	<b>Summary</b>	<b>17</b>
A.1	Status . . . . .	17
A.2	Comments . . . . .	17

# 1 Front

seq_num	800589	Sequence number
obs_id	6956	Observation id
title	Powerful Radio Sources in Galaxy Clusters	Proposal title
observer	Dr RODERICK JOHNSTONE	Principal investigator
object	S0463	Source name
dtcycle	0	&#160
cycle	P	events from which exps? Prim/Second/Both
ra_targ	67.320833	Observer's specified target RA [deg]
dec_targ	-53.821944	Observer's specified target Dec [deg]
ra_nom	67.315994917779	Nominal RA [deg]
dec_nom	-53.818269744994	Nominal Dec [deg]
roll_nom	150.70477241575	Nominal Roll [deg]
revision	2	Processing version of data
ontime	29735.077002108	Sum of GTIs [s]
livetime	29346.56633043	Livetime [s]
ontime0	29741.358942598	Sum of GTIs [s]
ontime1	29744.49994278	Sum of GTIs [s]
ontime2	29738.217992216	Sum of GTIs [s]
ontime3	29735.077002108	Sum of GTIs [s]
ontime6	29741.358952612	Sum of GTIs [s]
l2events	109563	Number of level 2 events

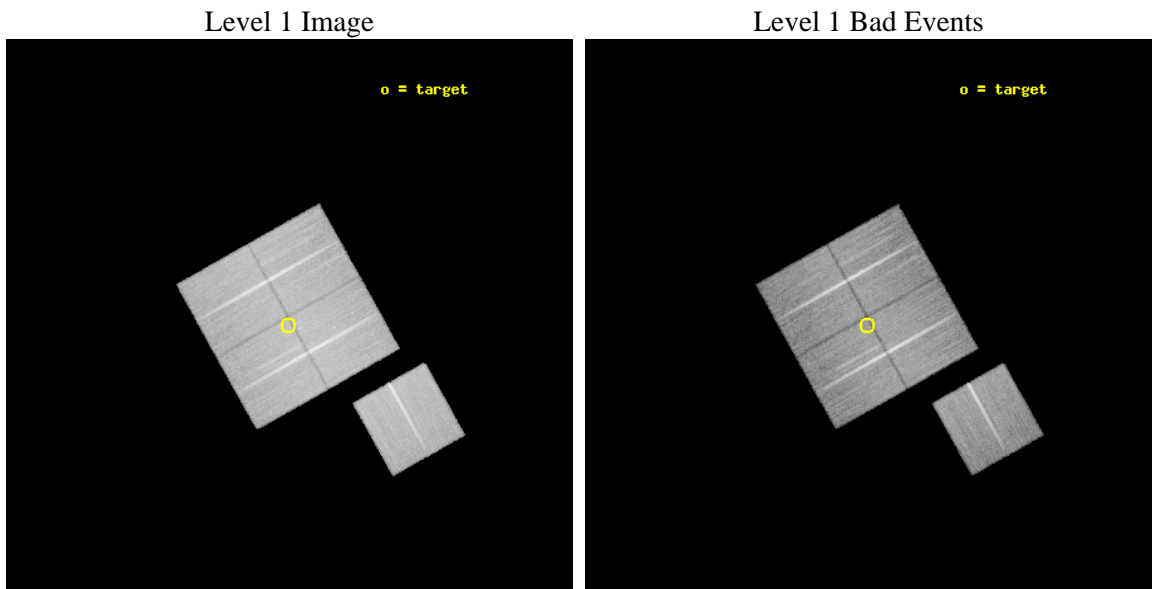




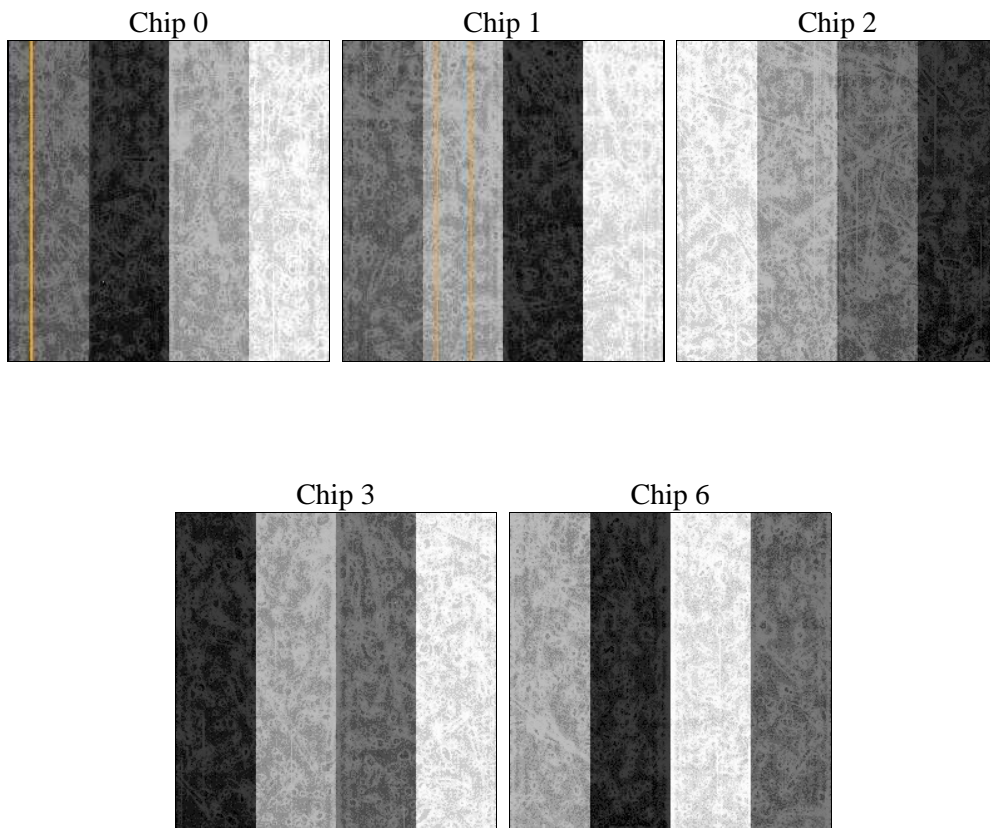
## 2 OBI

### 2.1 OBI

#### 2.1.1 Images



#### 2.1.2 Bias



### 2.1.3 Parameters

obi_num	1	Obi number	sched_exp_time	29700.000000	[s] Scheduled observation exposure time
ascdsver	8.4.3.1	Processing system revision	ontime	29735.077002108	Sum of GTIs [s]
caldsver	4.4.9	&#160	ontime0	29741.358942598	Sum of GTIs [s]
date	2012-04-04T05:43:20	Date and time of file creation	ontime1	29744.49994278	Sum of GTIs [s]
revision	2	Processing version of data	ontime2	29738.217992216	Sum of GTIs [s]
			ontime3	29735.077002108	Sum of GTIs [s]
			ontime6	29741.358952612	Sum of GTIs [s]
			l1events	1156033	Number of level 1 events

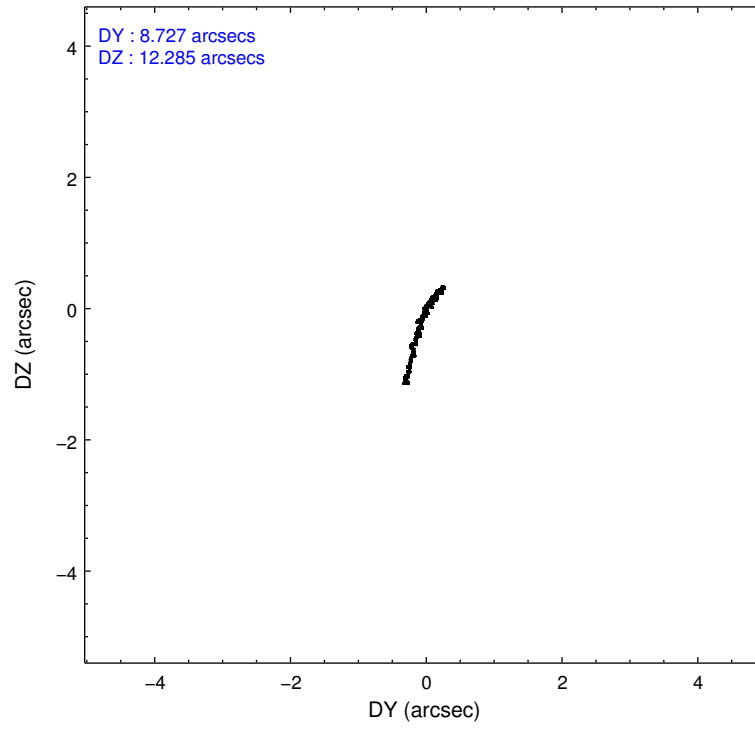
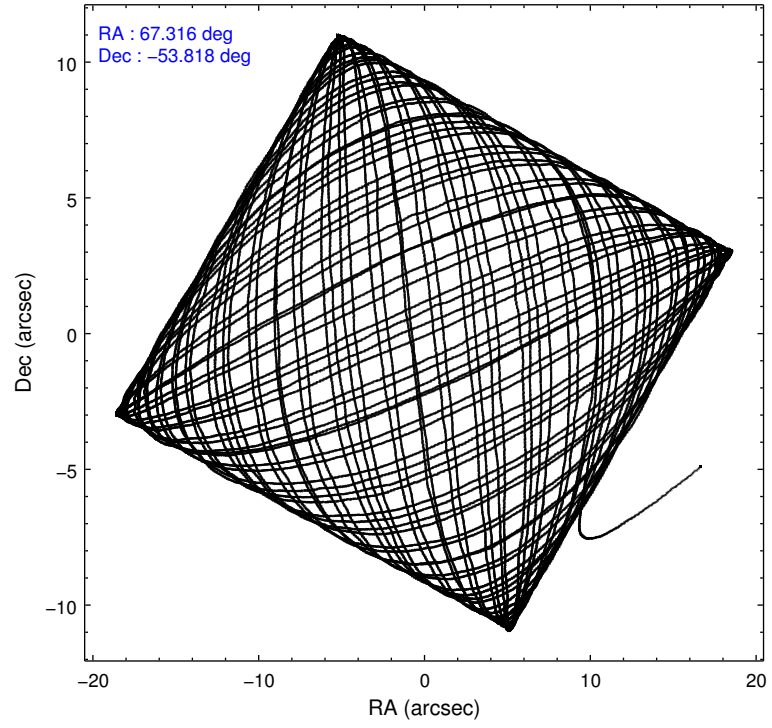
### 2.1.4 Events

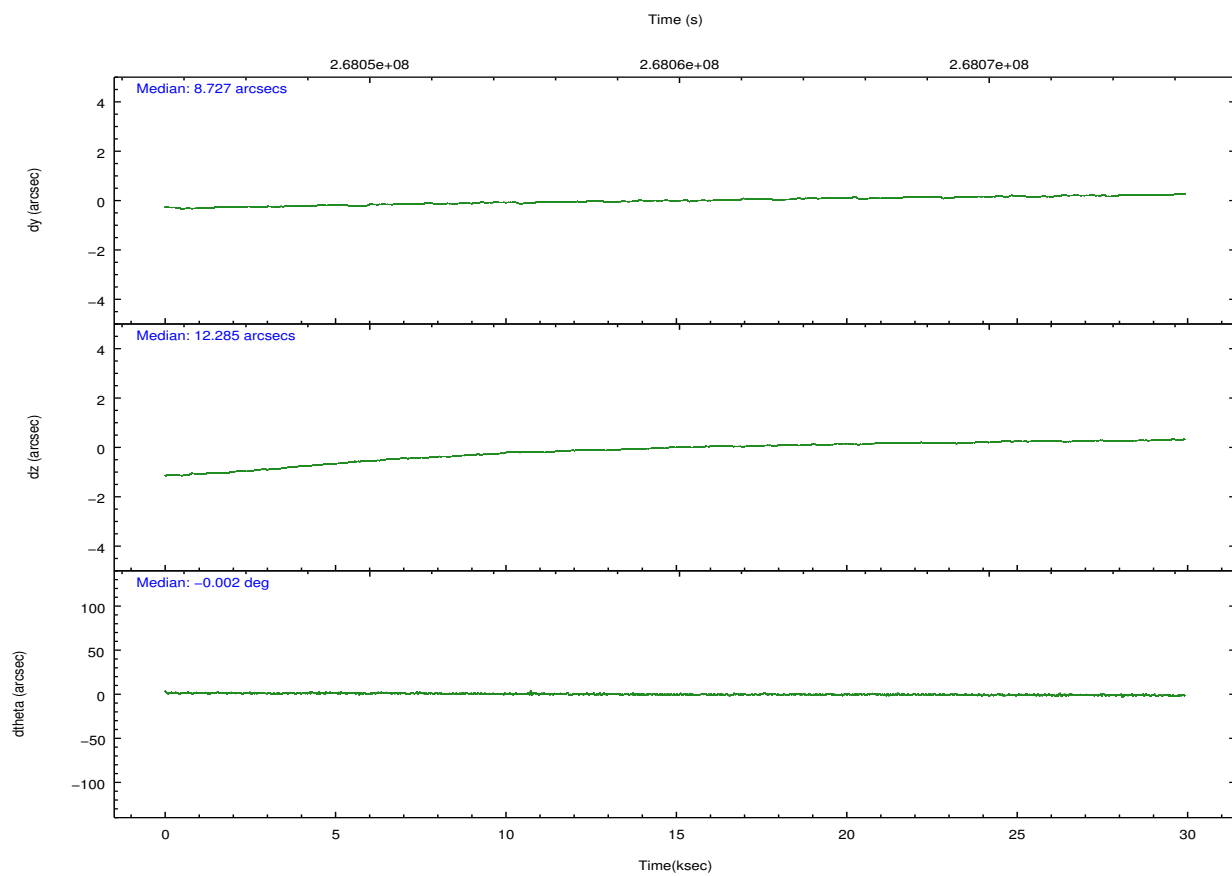
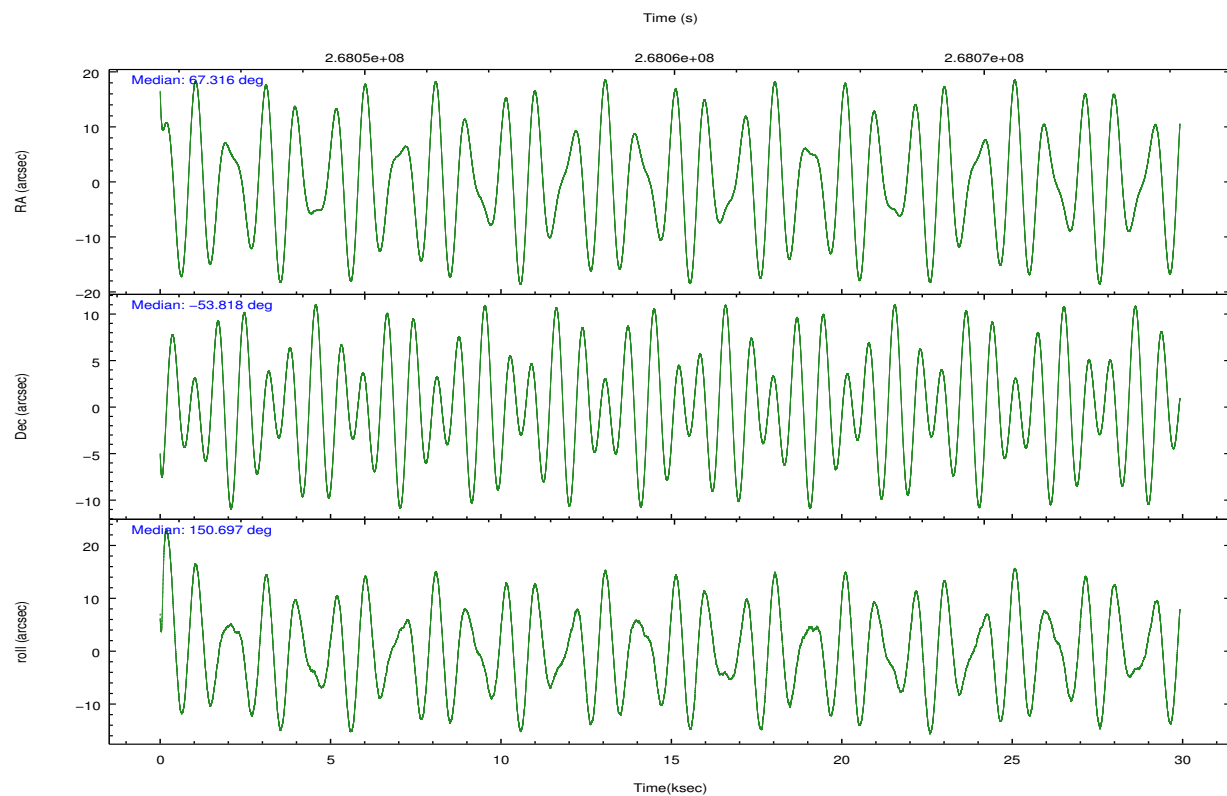
	ccd 0	ccd 1	ccd 2	ccd 3	ccd 6		ccd 0	ccd 1	ccd 2	ccd 3	ccd 6
level 1 events	224454	216532	254750	229379	230918	grade 0 events	10058	10282	15722	9861	8248
rejected events	199440	189861	223636	205435	207582		4%	4%	6%	4%	3%
rejected %	88%	87%	87%	89%	89%	grade 1 events	119	101	179	160	102
							0%	0%	0%	0%	0%
						grade 2 events	5516	5631	5873	4811	4955
							2%	2%	2%	2%	2%
						grade 3 events	2648	2860	2658	2520	2567
							1%	1%	1%	1%	1%
						grade 4 events	2476	2737	2690	2492	2552
							1%	1%	1%	1%	1%
						grade 5 events	7566	8470	7261	8805	9039
							3%	3%	2%	3%	3%
						grade 6 events	4319	5165	4177	4262	5017
							1%	2%	1%	1%	2%
						grade 7 events	191752	181286	216190	196468	198438
							85%	83%	84%	85%	85%

## 2.2 Compared Parameters

Parameter	Planned	Actual	Parameter	Planned	Actual
Instrument	ACIS	ACIS	Obspar format version number	7	7
Detector	ACIS-01236	ACIS-01236	Obspar file type	PREDICTED	ACTUAL
Grating	NONE	NONE	Obspar update status	NONE	UPDATED
Data mode	VFAINT	VFAINT	Number of optional ACIS chips dropped	0	0
Observation mode	POINTING	POINTING	On-chip summing requested	N	N
[deg] Pointing RA	67.362398	67.31599491777904	Subarray requested	NONE	NONE
[deg] Pointing Dec	-53.817819	-53.81826974499442	Alternating exposures requested	N	N
[deg] Pointing Roll	150.533554	150.7047724157517	[s] Primary exposure time	0.000000	3.1
[mm] SIM focus pos	-0.782348	-0.7809083437167272			
[mm] SIM defocus	0	0.001439871863259334			
[mm] SIM translation stage pos	-233.592463	-233.5874344608287			
[mm] SIM translation stage offset	0	-0.005018542100998502			
[s] Observation start time (MET)	268045117.184000	268044167.57898			
Observation start date	2006-06-30T08:57:32	2006-06-30T08:42:47			
[s] Observation end time (MET)	268074817.184000	268074950.89292			
Observation end date	2006-06-30T17:12:32	2006-06-30T17:15:50			
Read mode	TIMED	TIMED			

## 2.3 Aspect



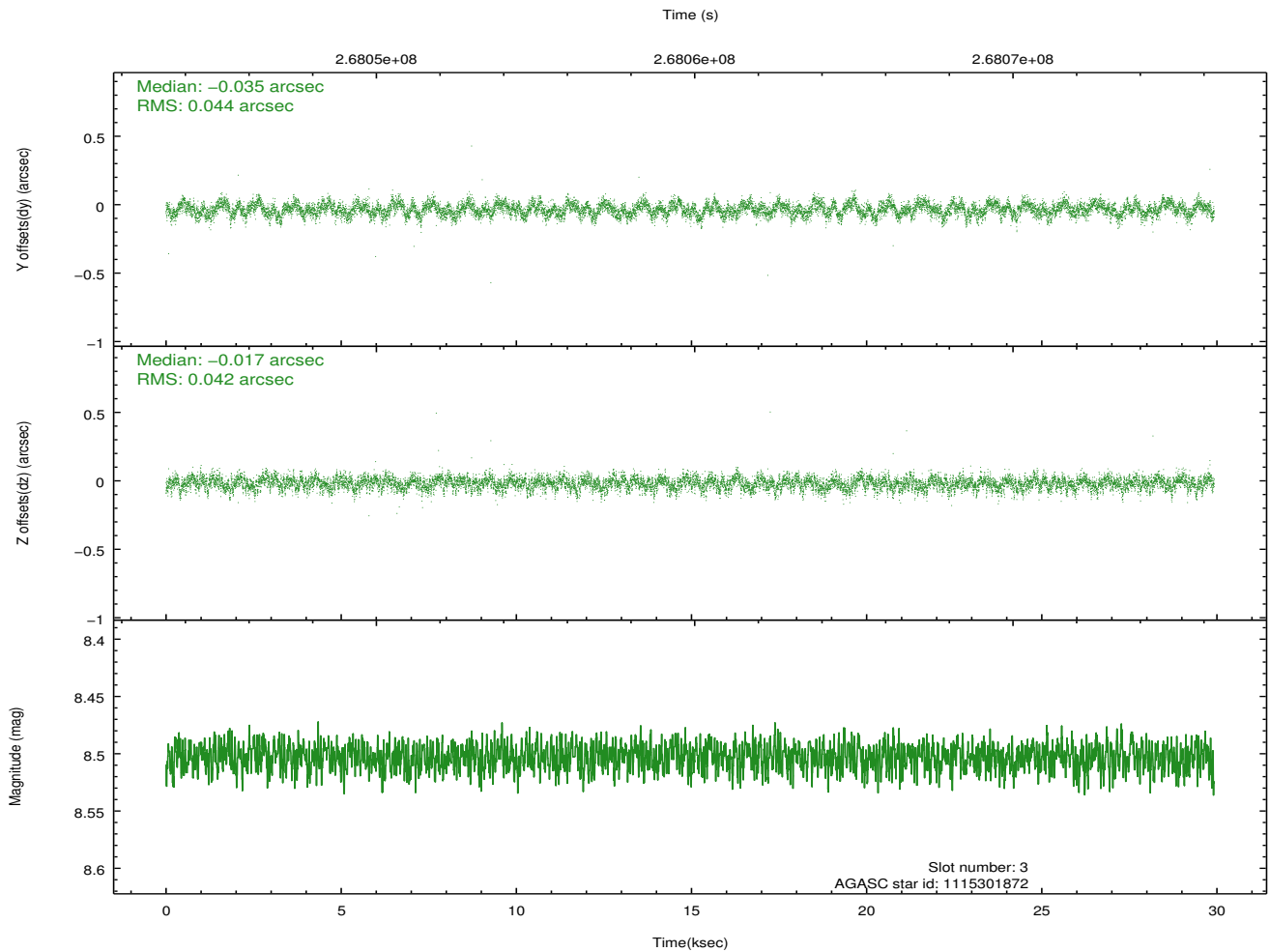
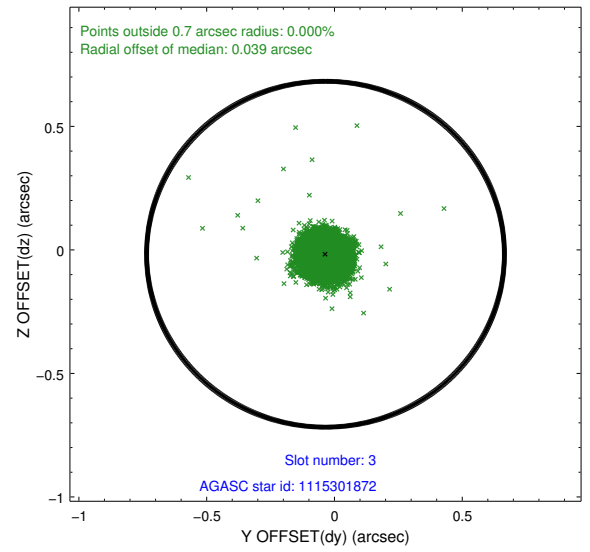
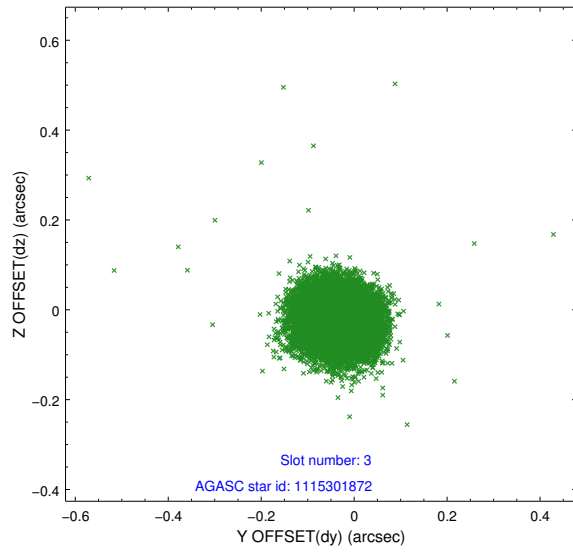


### Slot Statistics

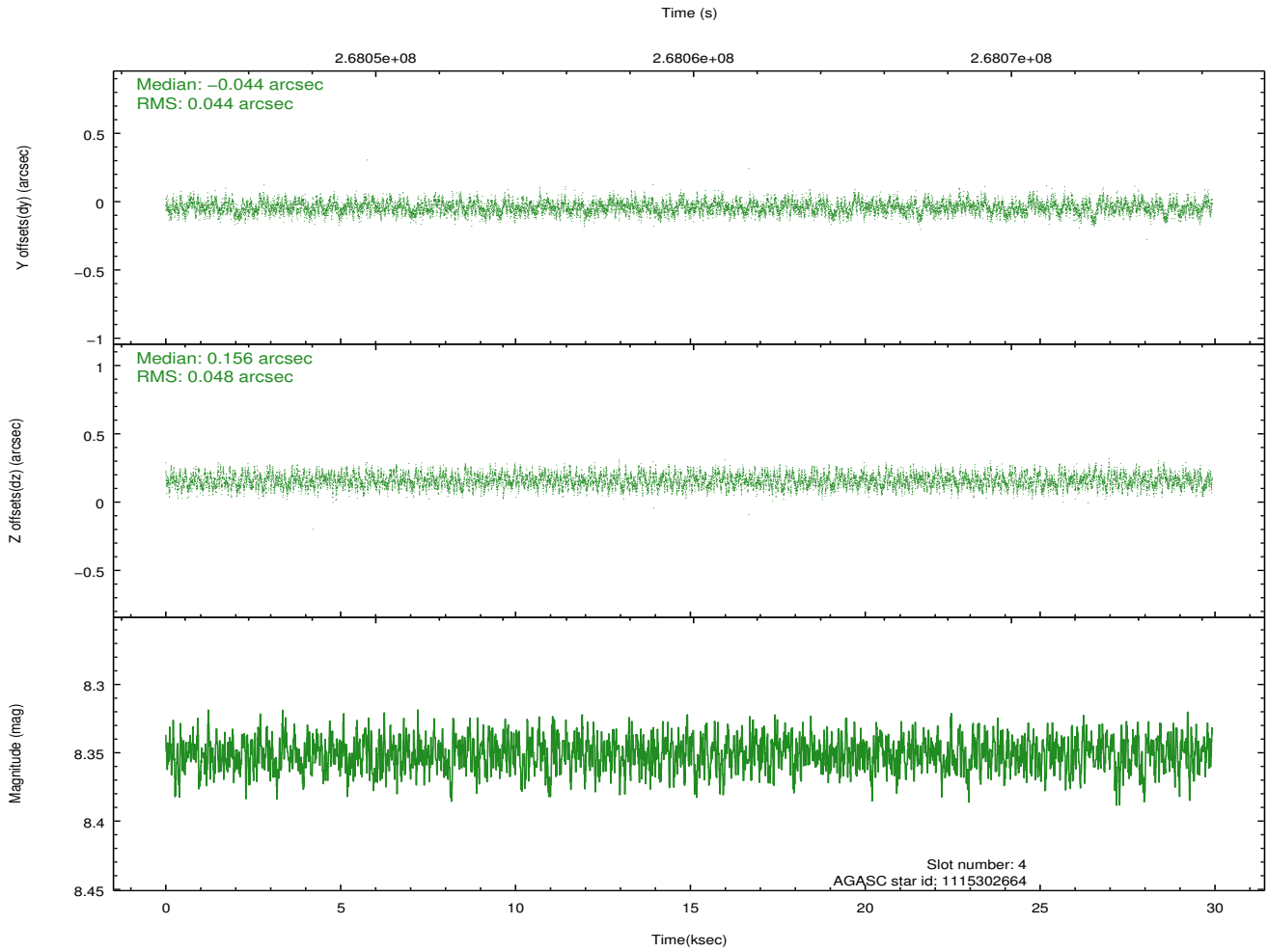
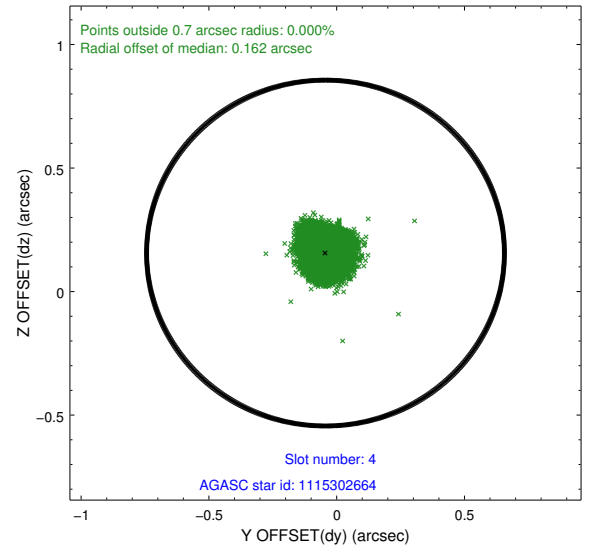
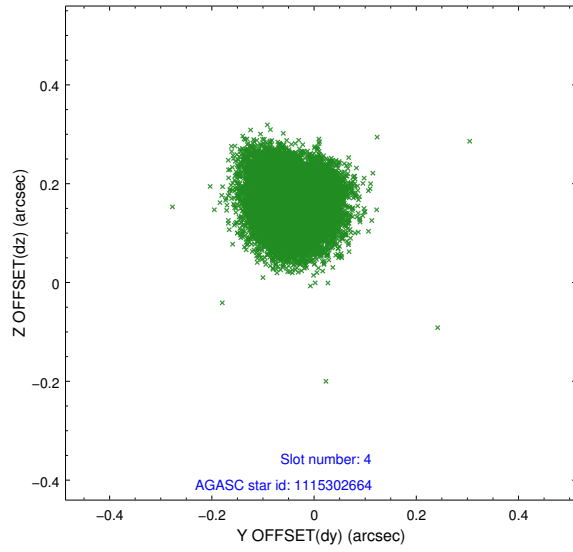
slot	status	id	mag	n_pts	med_dy	med_dz	dr1	dr2	ra	dec	mean_y	mean_z
0	FID	ACIS-I-1	7.24	7298	-0.007	-0.064	0.010	0.019	0.000000	0.000000	930.90	-835.72
1	FID	ACIS-I-4	7.17	7297	0.167	0.071	0.009	0.015	0.000000	0.000000	2151.18	1064.17
2	FID	ACIS-I-5	7.22	7299	-0.259	0.063	0.007	0.012	0.000000	0.000000	-1817.24	1062.13
3	GUIDE	1115301872	8.50	14585	-0.035	-0.017	0.063	0.102	67.569786	-53.454604	256.26	-1356.42
4	GUIDE	1115302664	8.35	14593	-0.044	0.156	0.070	0.109	66.850561	-53.404307	1687.08	-751.99
5	GUIDE	1115305400	8.84	14579	0.041	-0.027	0.076	0.120	67.305588	-54.406899	-939.57	1904.54
6	GUIDE	1115307048	8.00	14596	0.022	0.019	0.101	0.142	67.476503	-53.930505	-410.03	234.61
7	GUIDE	1114375040	9.16	14576	0.021	-0.129	0.116	0.179	66.595430	-54.251333	632.40	2159.98

## 2.4 Star Slots

### 2.4.1 Slot 3

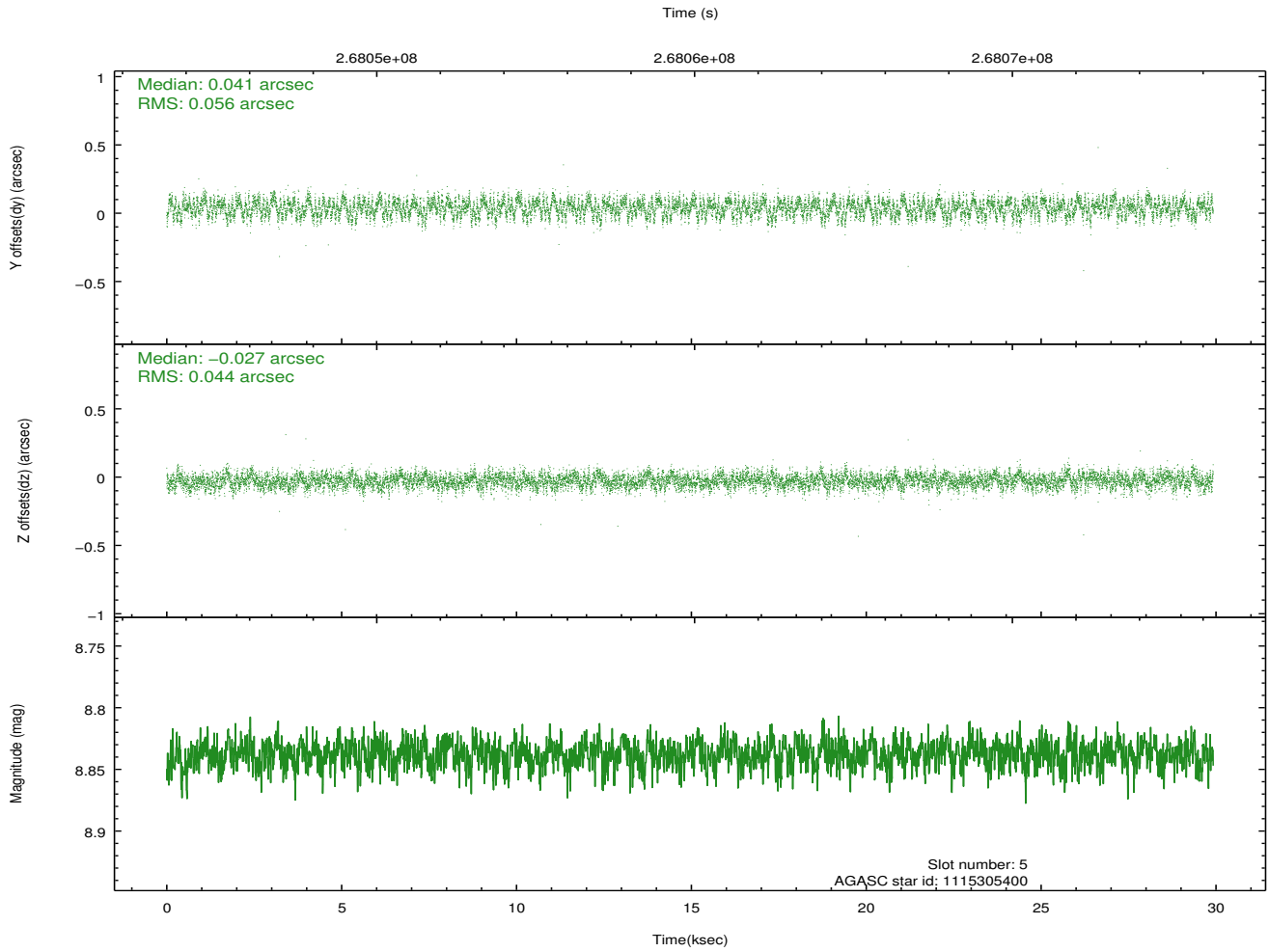
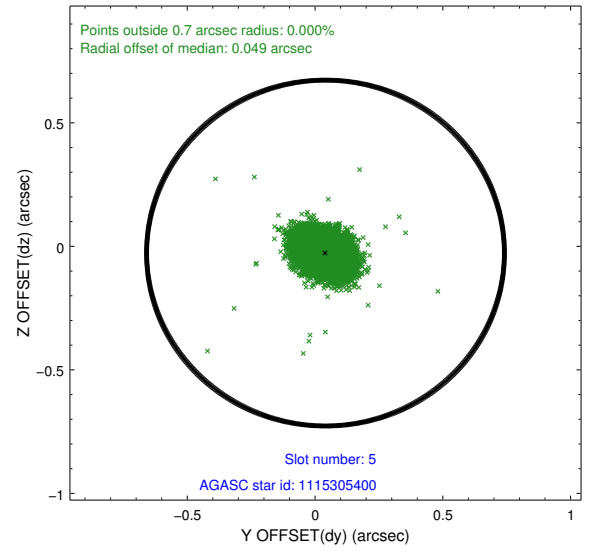
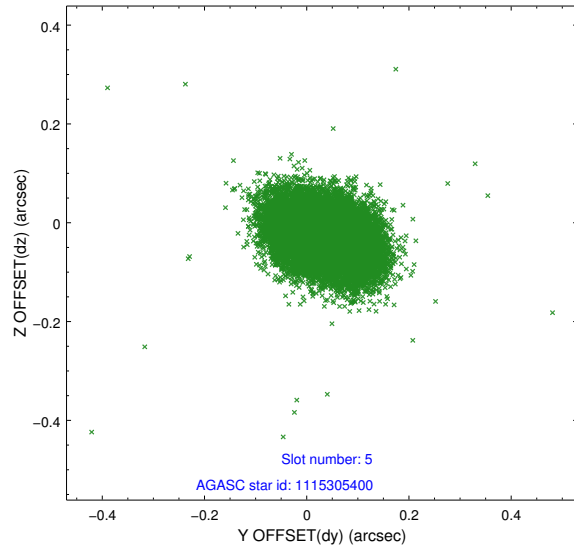


## 2.4.2 Slot 4

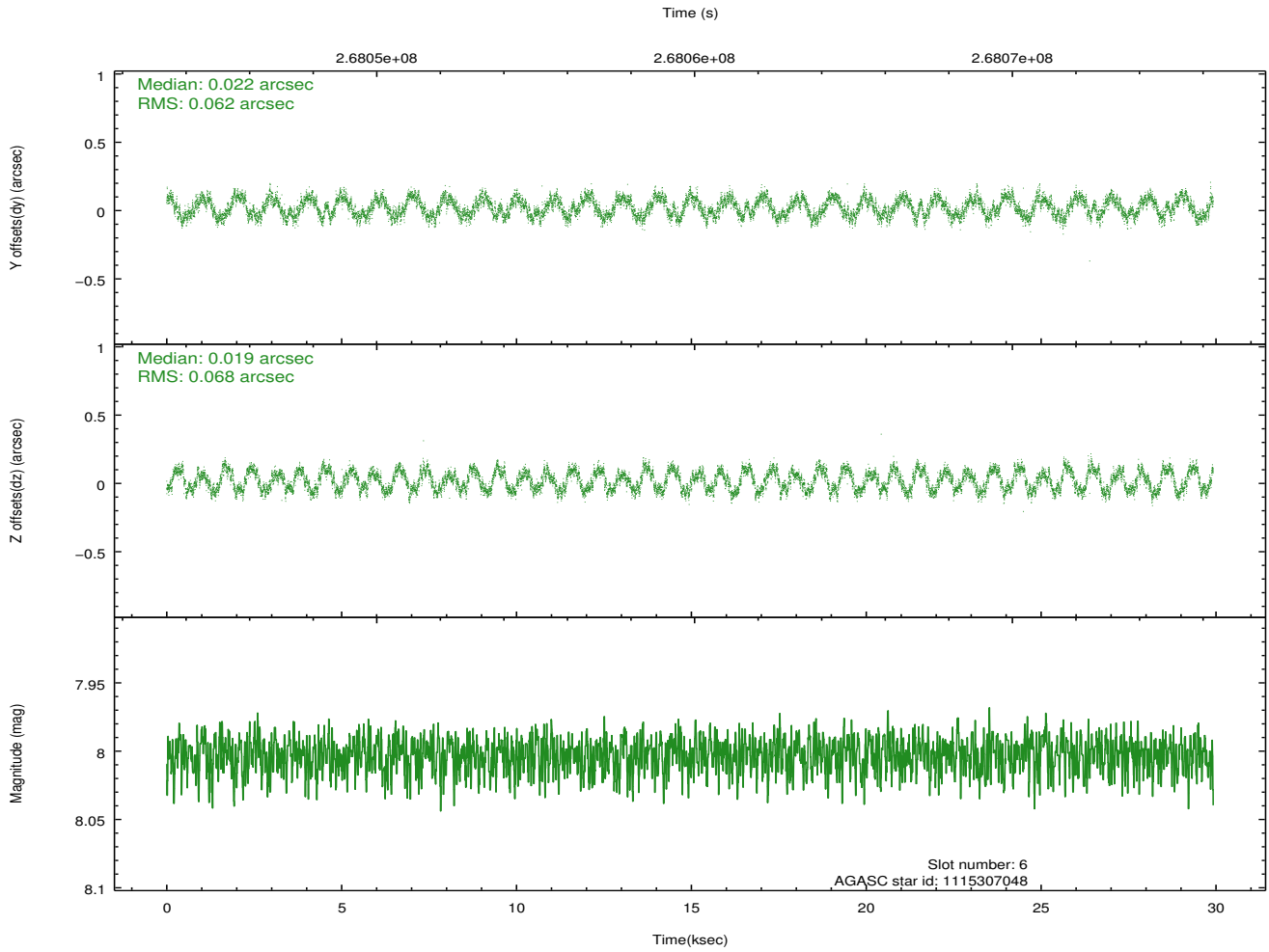
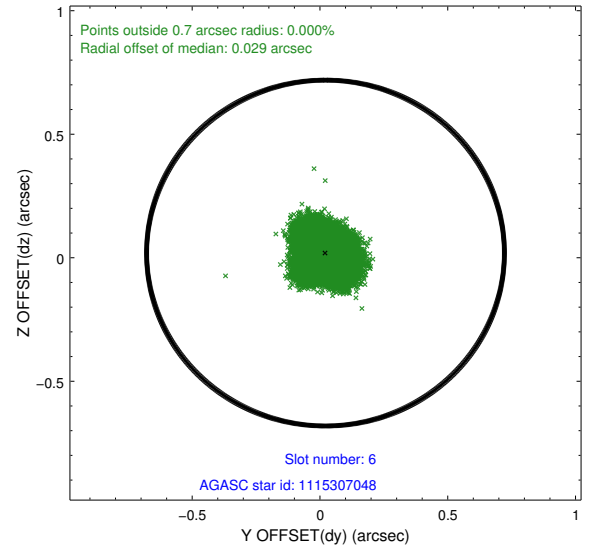
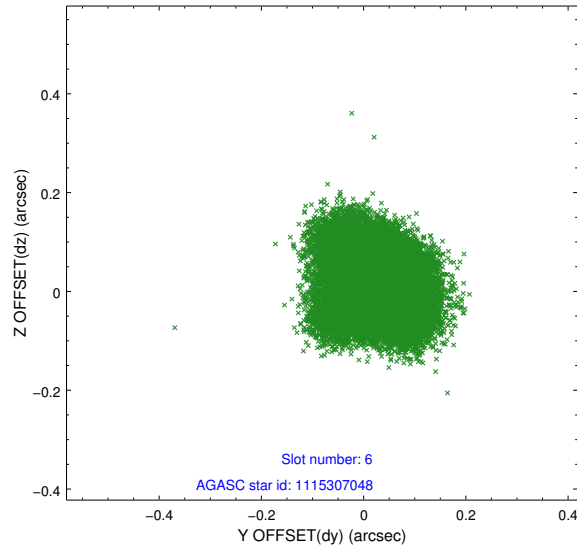




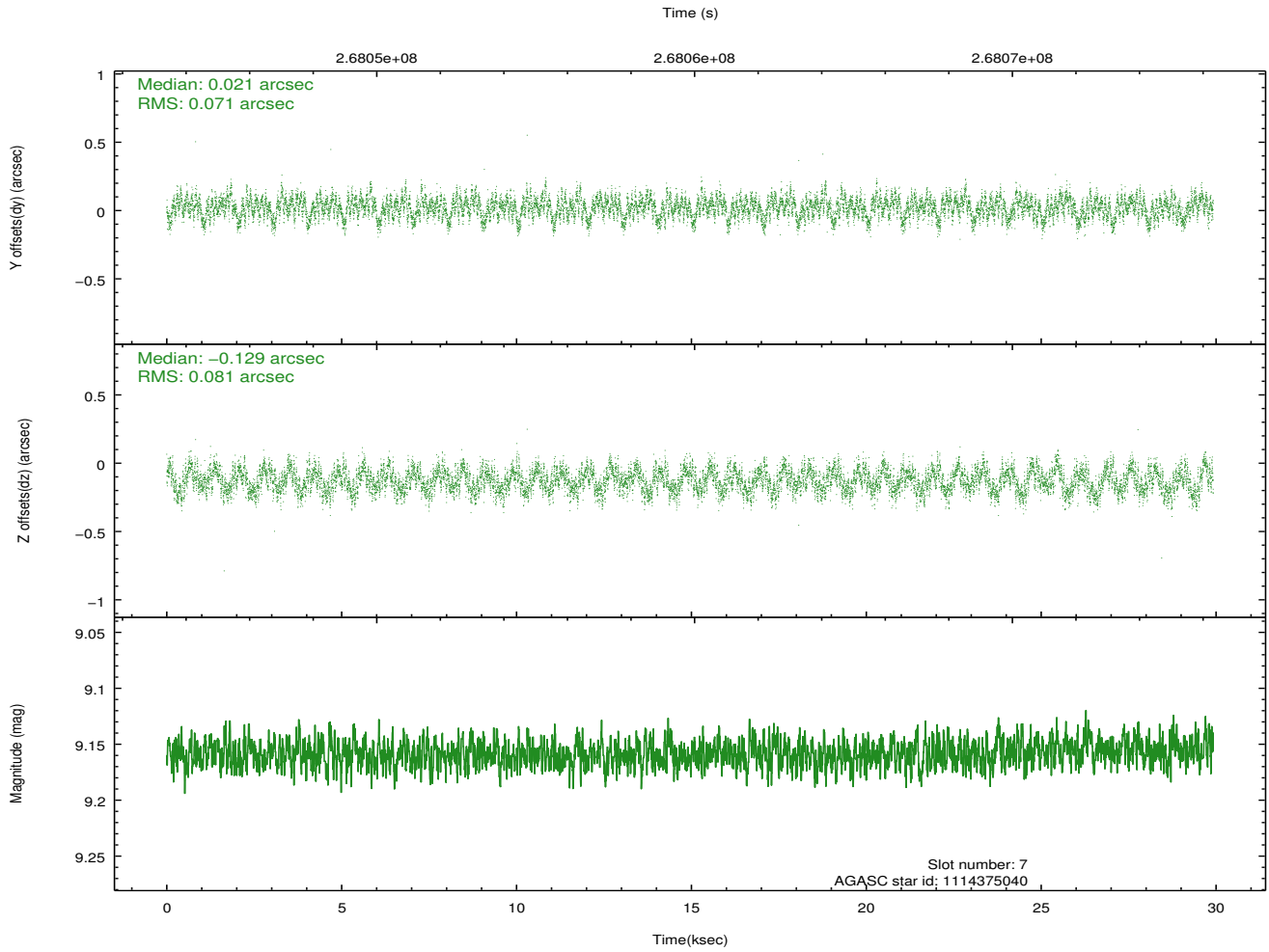
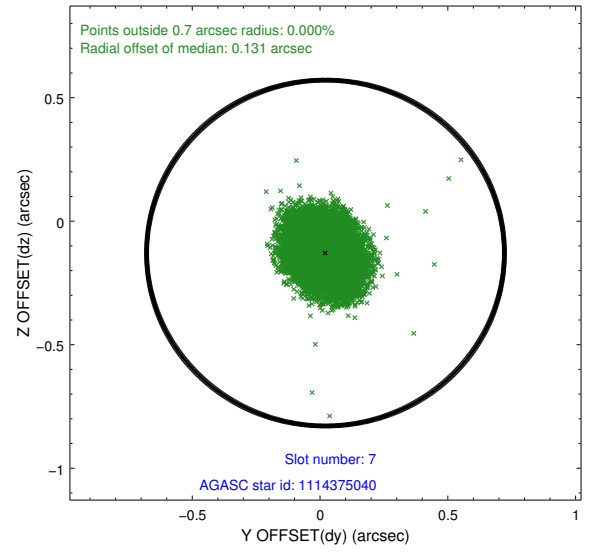
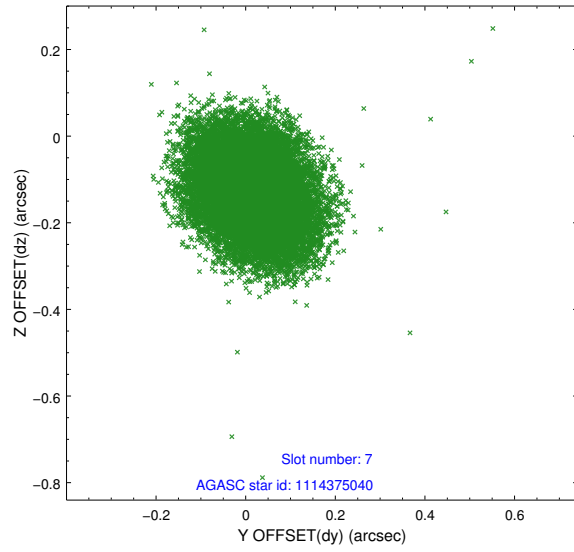
### 2.4.3 Slot 5



## 2.4.4 Slot 6

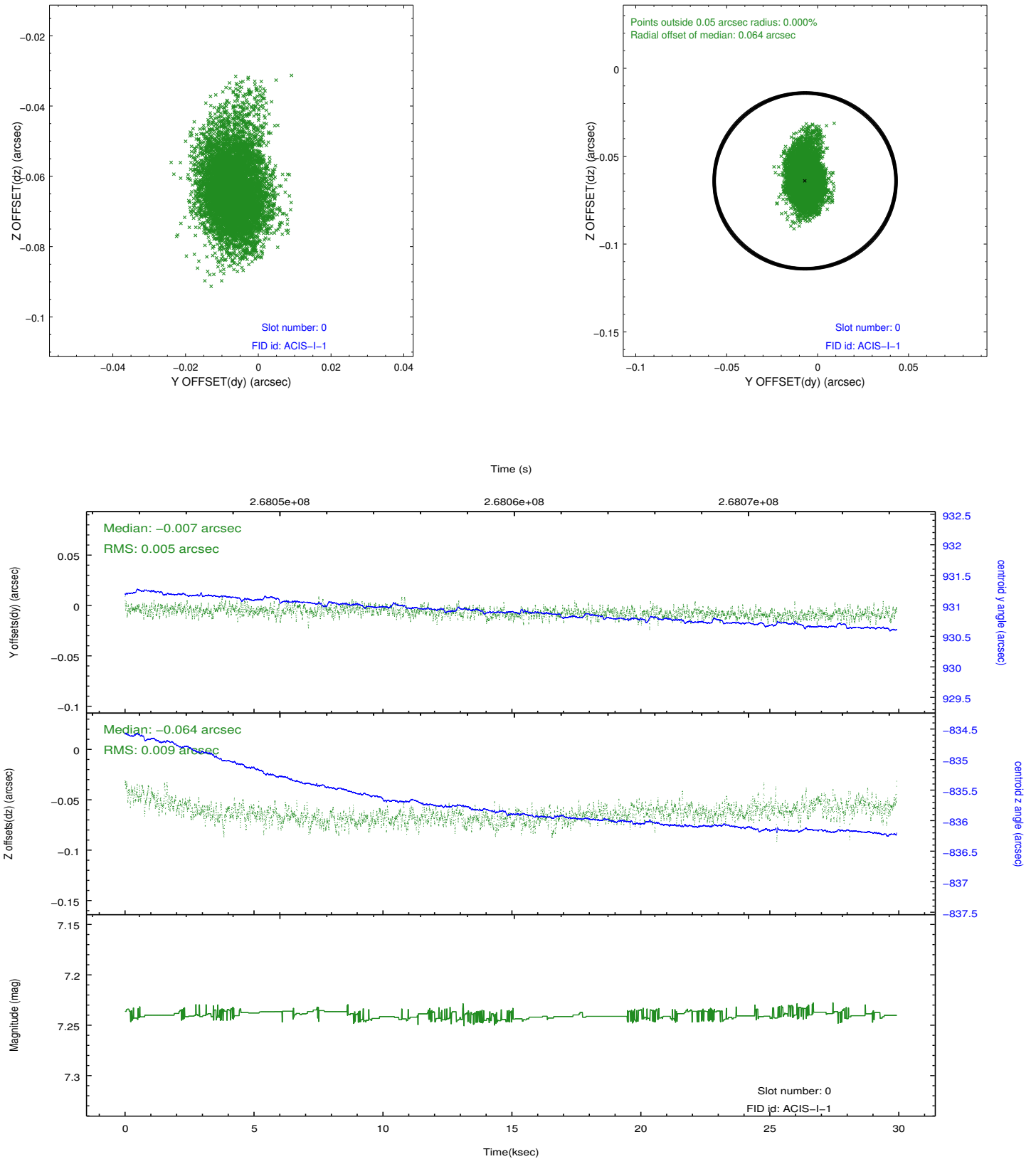


## 2.4.5 Slot 7

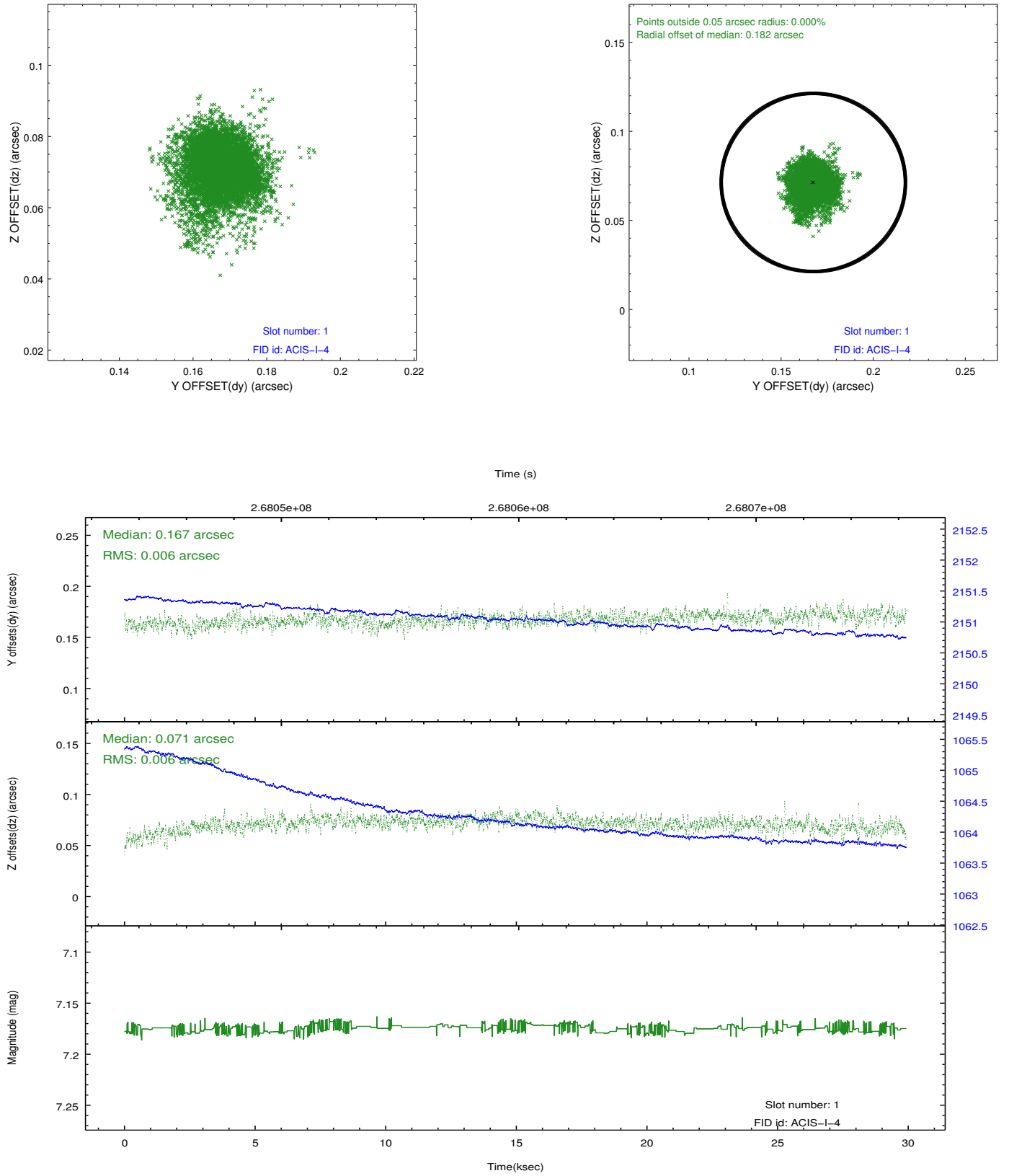


## 2.5 FID Slots

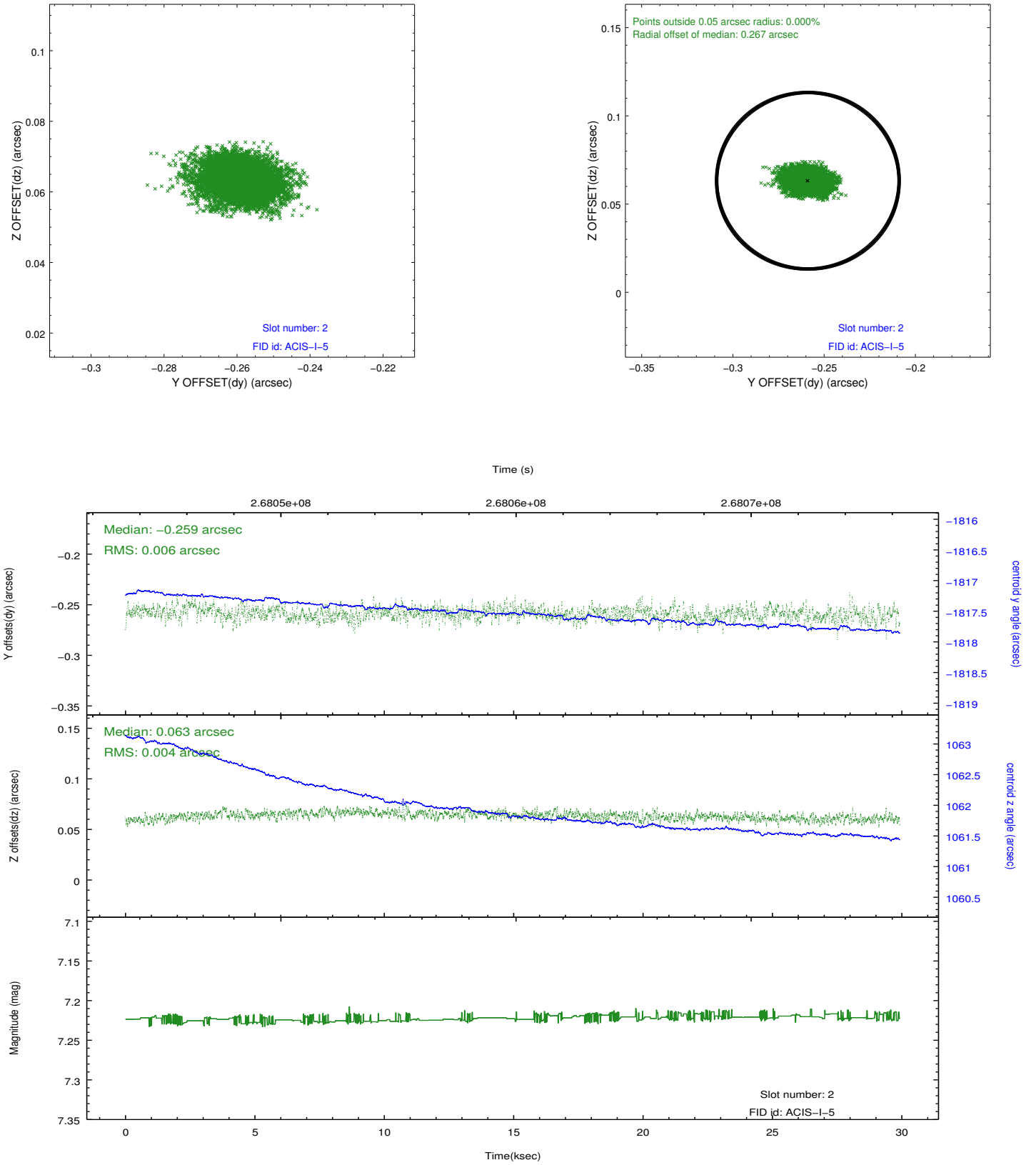
### 2.5.1 Slot 0



## 2.5.2 Slot 1



### 2.5.3 Slot 2



## A Summary

### A.1 Status

V&V Scientist	Jen Lauer
V&V Date (YYYY-MM-DD)	2012.04.05
V&V Edition	1
V&V Disposition and Status	OK
V&V Charge Time	29.735077

### A.2 Comments