

V&V Reference Report

L2 ASCDS Version : 8.4.3

Observation 6951 - L2 Version 2
Chandra X-Ray Center

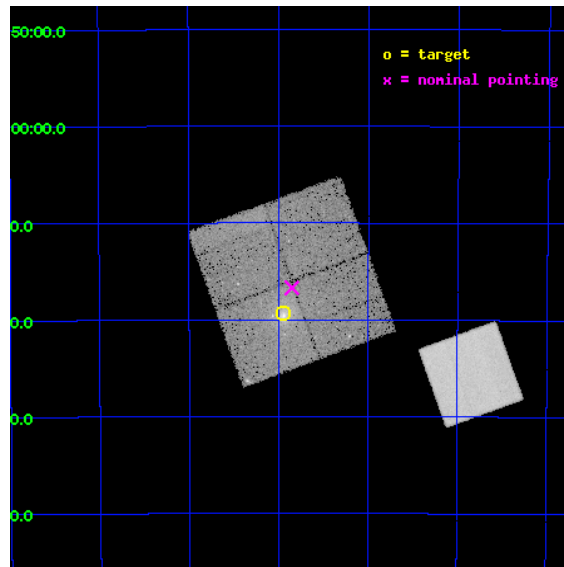
L2 Processing Date : Apr 2 2012

Contents

1	Front	2
2	OBI	3
2.1	OBI	3
2.1.1	Images	3
2.1.2	Bias	3
2.1.3	Parameters	4
2.1.4	Events	4
2.2	Compared Parameters	5
2.3	Aspect	6
2.4	Star Slots	9
2.4.1	Slot 3	9
2.4.2	Slot 4	10
2.4.3	Slot 5	11
2.4.4	Slot 6	12
2.4.5	Slot 7	13
2.5	FID Slots	14
2.5.1	Slot 0	14
2.5.2	Slot 1	15
2.5.3	Slot 2	16
A	Summary	17
A.1	Status	17
A.2	Comments	17

1 Front

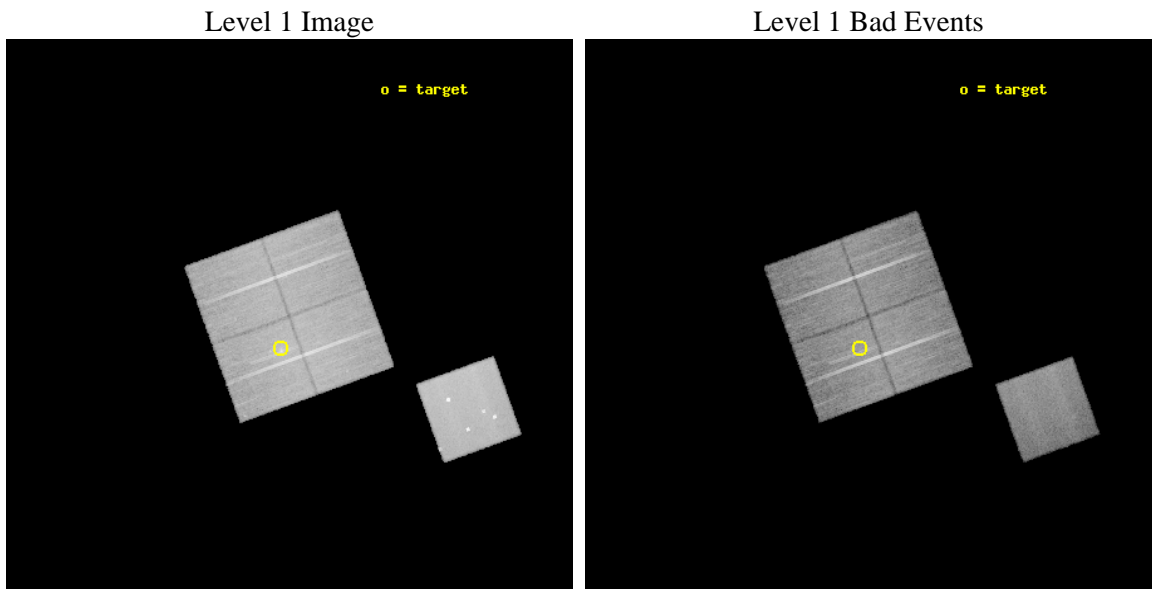
seq_num	800584	Sequence number
obs_id	6951	Observation id
title	Chandra Study of the Structure of the Southern Part of the Horologium Supercluster	Proposal title
observer	Dr. Hans Boehringer	Principal investigator
object	A3120	Source name
dtcycle	0	
cycle	P	events from which exps? Prim/Second/Both
ra_targ	50.4875	Observer's specified target RA [deg]
dec_targ	-51.321389	Observer's specified target Dec [deg]
ra_nom	50.462810311989	Nominal RA [deg]
dec_nom	-51.278319657536	Nominal Dec [deg]
roll_nom	160.10156799329	Nominal Roll [deg]
revision	2	Processing version of data
ontime	27131.158977509	Sum of GTIs [s]
livetime	26776.670411799	Livetime [s]
ontime0	27131.158977538	Sum of GTIs [s]
ontime1	27134.299947798	Sum of GTIs [s]
ontime2	27128.0179874	Sum of GTIs [s]
ontime3	27131.158977509	Sum of GTIs [s]
ontime5	27134.299947798	Sum of GTIs [s]
l2events	200968	Number of level 2 events



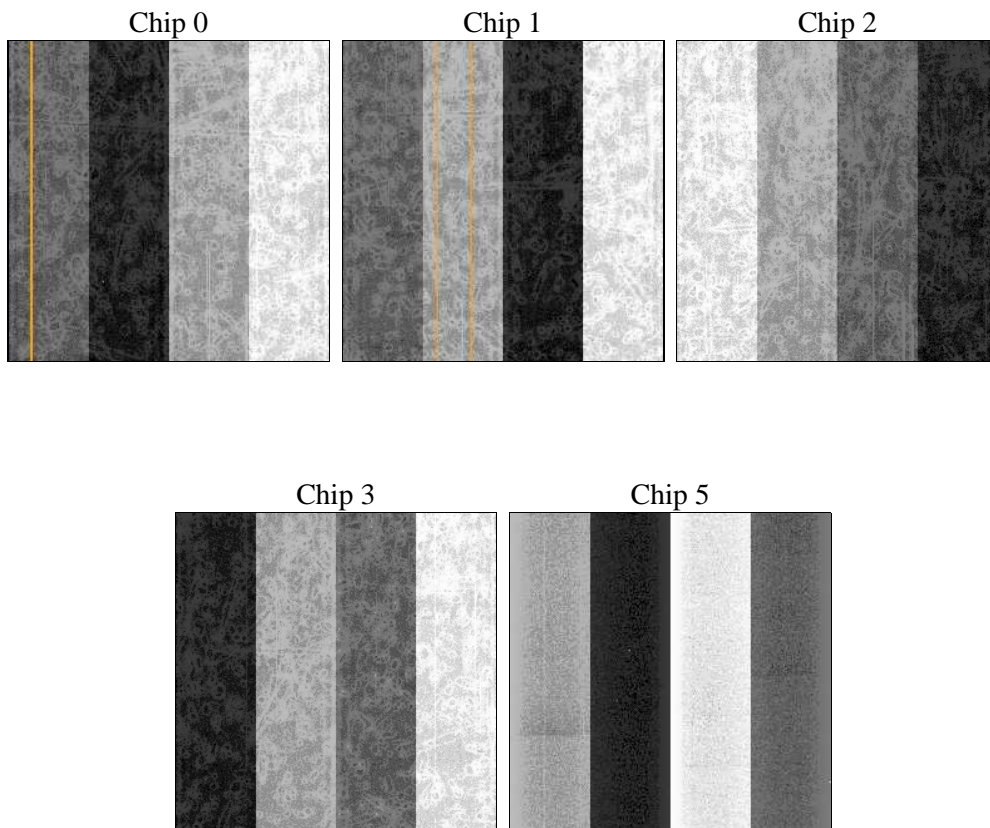
2 OBI

2.1 OBI

2.1.1 Images



2.1.2 Bias



2.1.3 Parameters

obi_num	0	Obi number	sched_exp_time	27000.000000	[s] Scheduled observation exposure time
ascdsver	8.4.3	Processing system revision	ontime	27131.158977509	Sum of GTIs [s]
caldbver	4.4.9	 	ontime0	27131.158977538	Sum of GTIs [s]
date	2012-04-02T20:03:00	Date and time of file creation	ontime1	27134.299947798	Sum of GTIs [s]
revision	2	Processing version of data	ontime2	27128.0179874	Sum of GTIs [s]
			ontime3	27131.158977509	Sum of GTIs [s]
			ontime5	27134.299947798	Sum of GTIs [s]
			l1events	1108533	Number of level 1 events

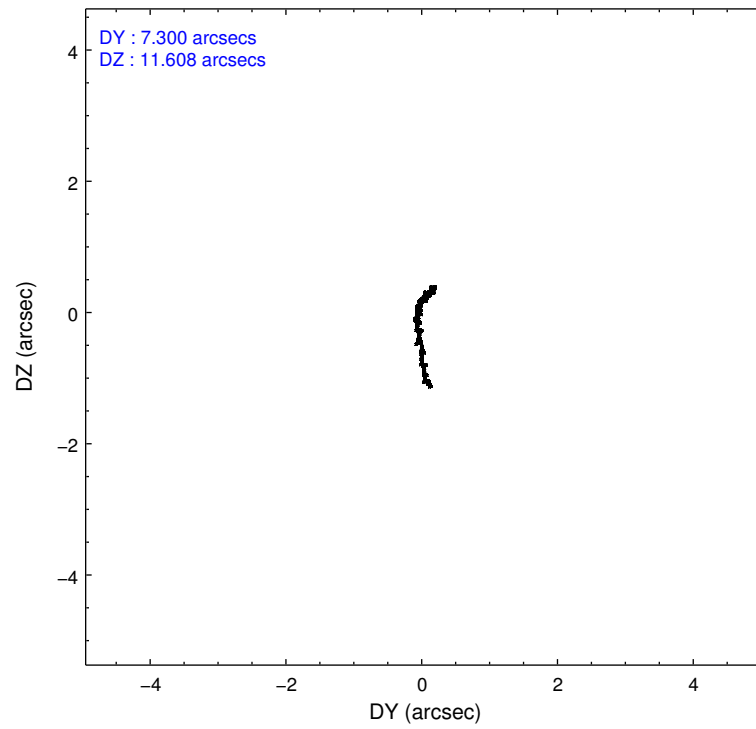
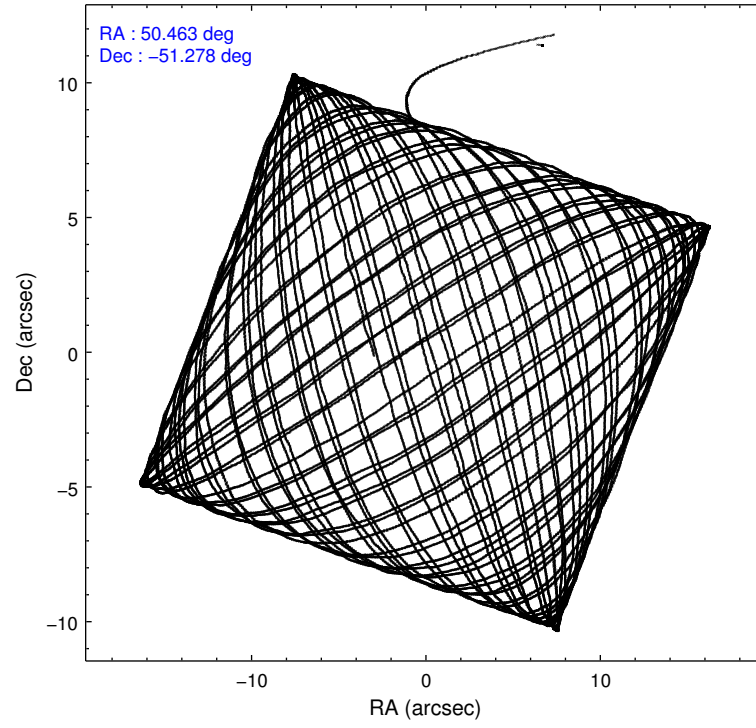
2.1.4 Events

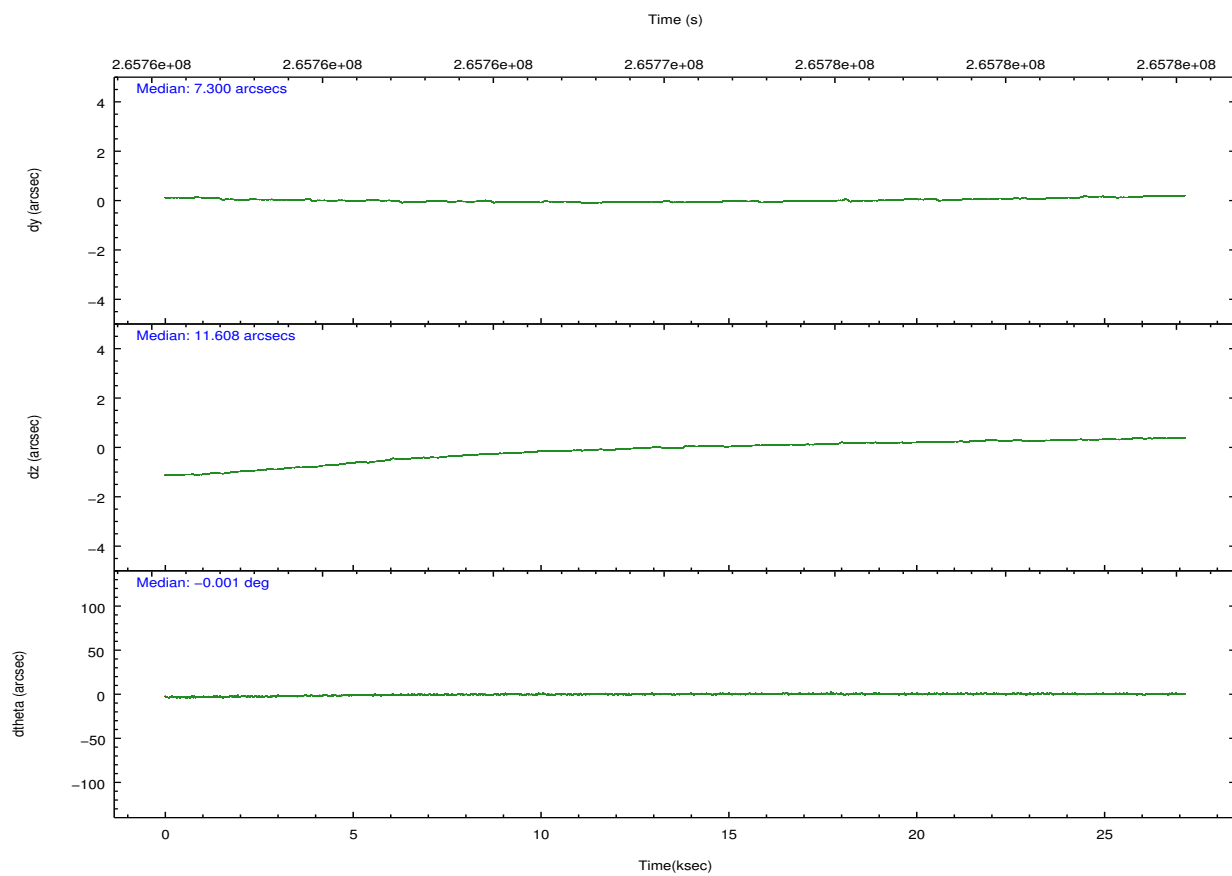
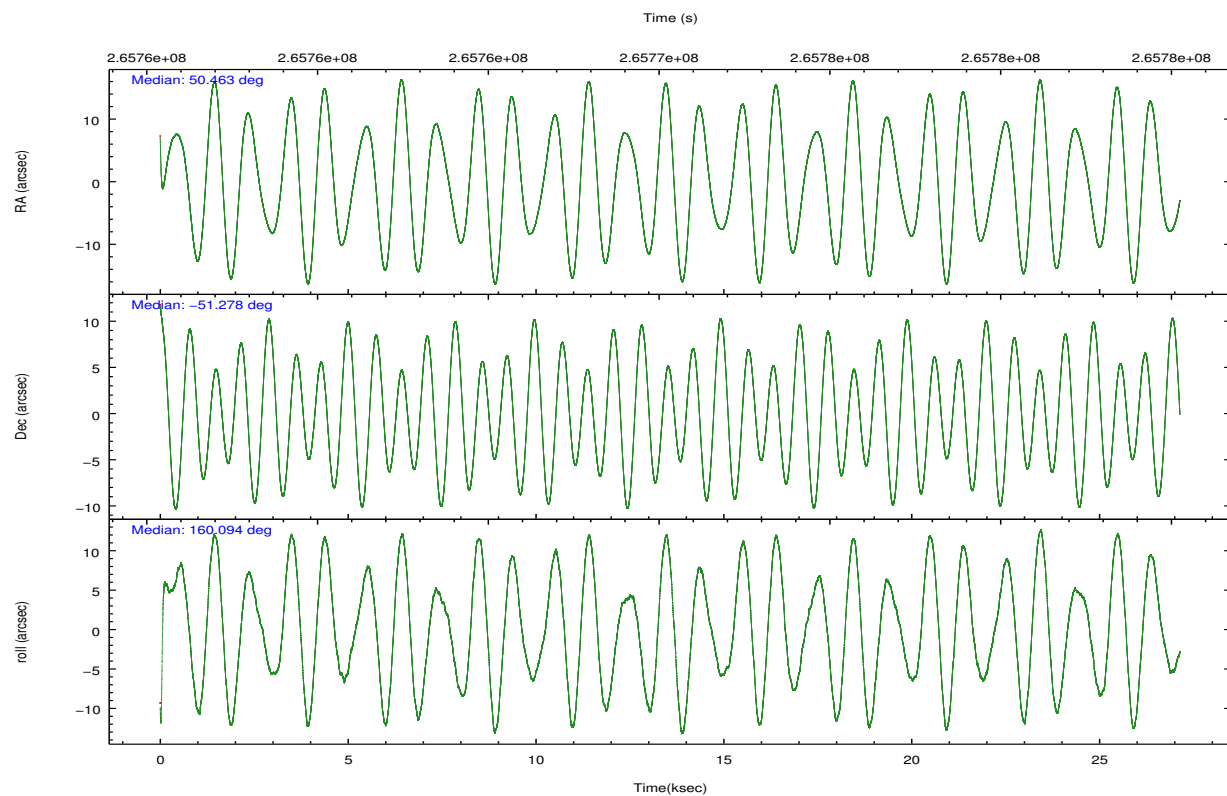
	ccd 0	ccd 1	ccd 2	ccd 3	ccd 5		ccd 0	ccd 1	ccd 2	ccd 3	ccd 5
level 1 events	197056	195220	217572	213555	285130	grade 0 events	7028	8208	7471	12531	17920
rejected events	177097	172764	197550	187998	143450		3%	4%	3%	5%	6%
rejected %	89%	88%	90%	88%	50%	grade 1 events	110	93	131	128	372
							0%	0%	0%	0%	0%
						grade 2 events	4799	5020	4617	4619	40501
							2%	2%	2%	2%	14%
						grade 3 events	2304	2515	2171	2417	5898
							1%	1%	0%	1%	2%
						grade 4 events	2124	2434	2249	2361	5730
							1%	1%	1%	1%	2%
						grade 5 events	6687	7672	6341	7933	22216
							3%	3%	2%	3%	7%
						grade 6 events	3853	4510	3665	3834	72901
							1%	2%	1%	1%	25%
						grade 7 events	170151	164768	190927	179732	119592
							86%	84%	87%	84%	41%

2.2 Compared Parameters

Parameter	Planned	Actual	Parameter	Planned	Actual
Instrument	ACIS	ACIS	Obspar format version number	7	7
Detector	ACIS-01235	ACIS-01235	Obspar file type	PREDICTED	ACTUAL
Grating	NONE	NONE	Obspar update status	NONE	UPDATED
Data mode	VFAINT	VFAINT	Number of optional ACIS chips dropped	0	0
Observation mode	POINTING	POINTING	On-chip summing requested	N	N
[deg] Pointing RA	50.505890	50.46281031198856	Subarray requested	NONE	NONE
[deg] Pointing Dec	-51.273419	-51.27831965753644	Alternating exposures requested	N	N
[deg] Pointing Roll	159.926503	160.101567993291	[s] Primary exposure time	0.000000	3.1
[mm] SIM focus pos	-0.782348	-0.7809083437167272			
[mm] SIM defocus	0	0.001439871863259334			
[mm] SIM translation stage pos	-233.592463	-233.5874344608287			
[mm] SIM translation stage offset	0	-0.005018542100998502			
[s] Observation start time (MET)	265756890.184000	265755800.13444			
Observation start date	2006-06-03T21:20:25	2006-06-03T21:03:20			
[s] Observation end time (MET)	265783890.184000	265785382.14832			
Observation end date	2006-06-04T04:50:25	2006-06-04T05:16:22			
Read mode	TIMED	TIMED			

2.3 Aspect



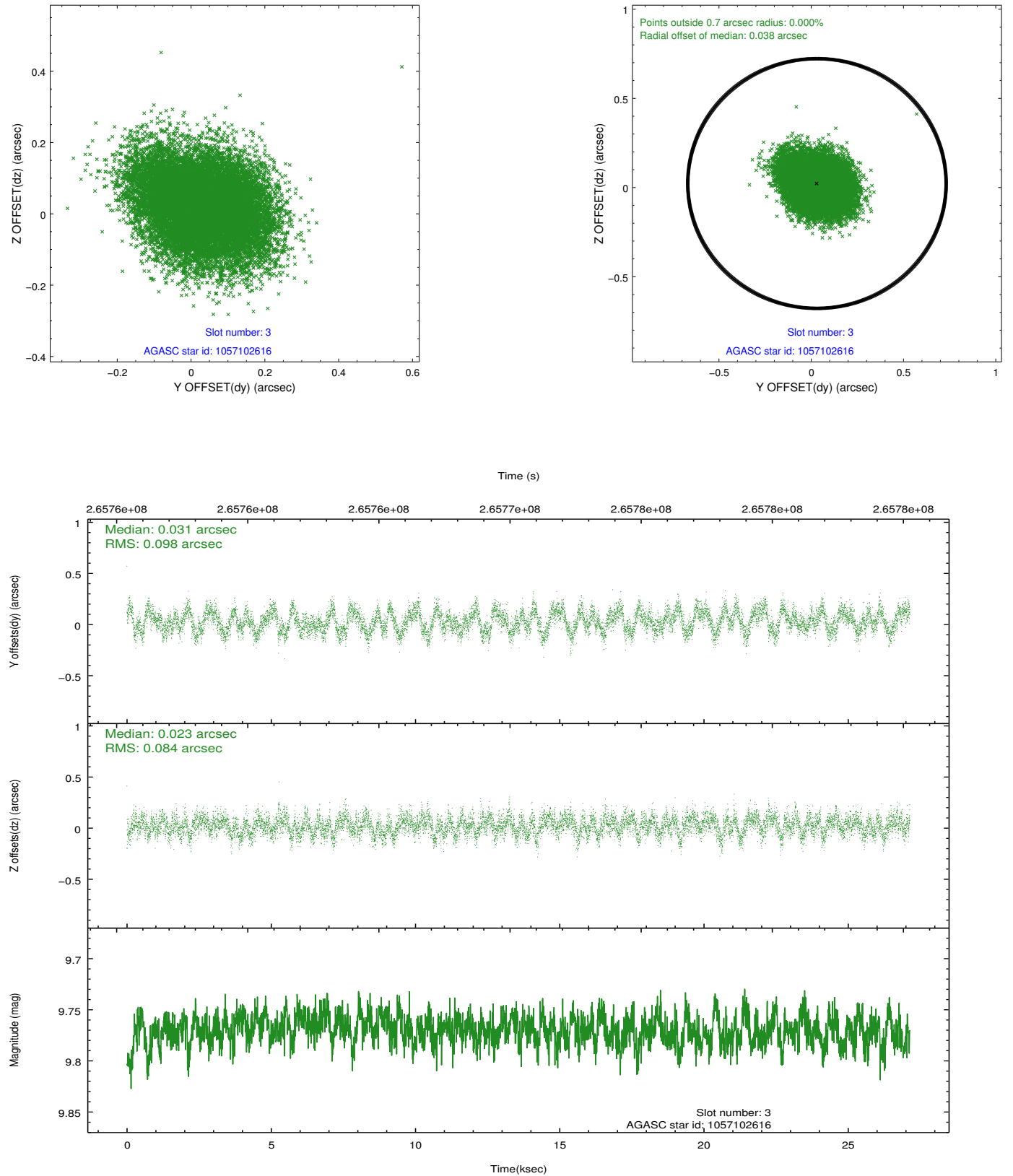


Slot Statistics

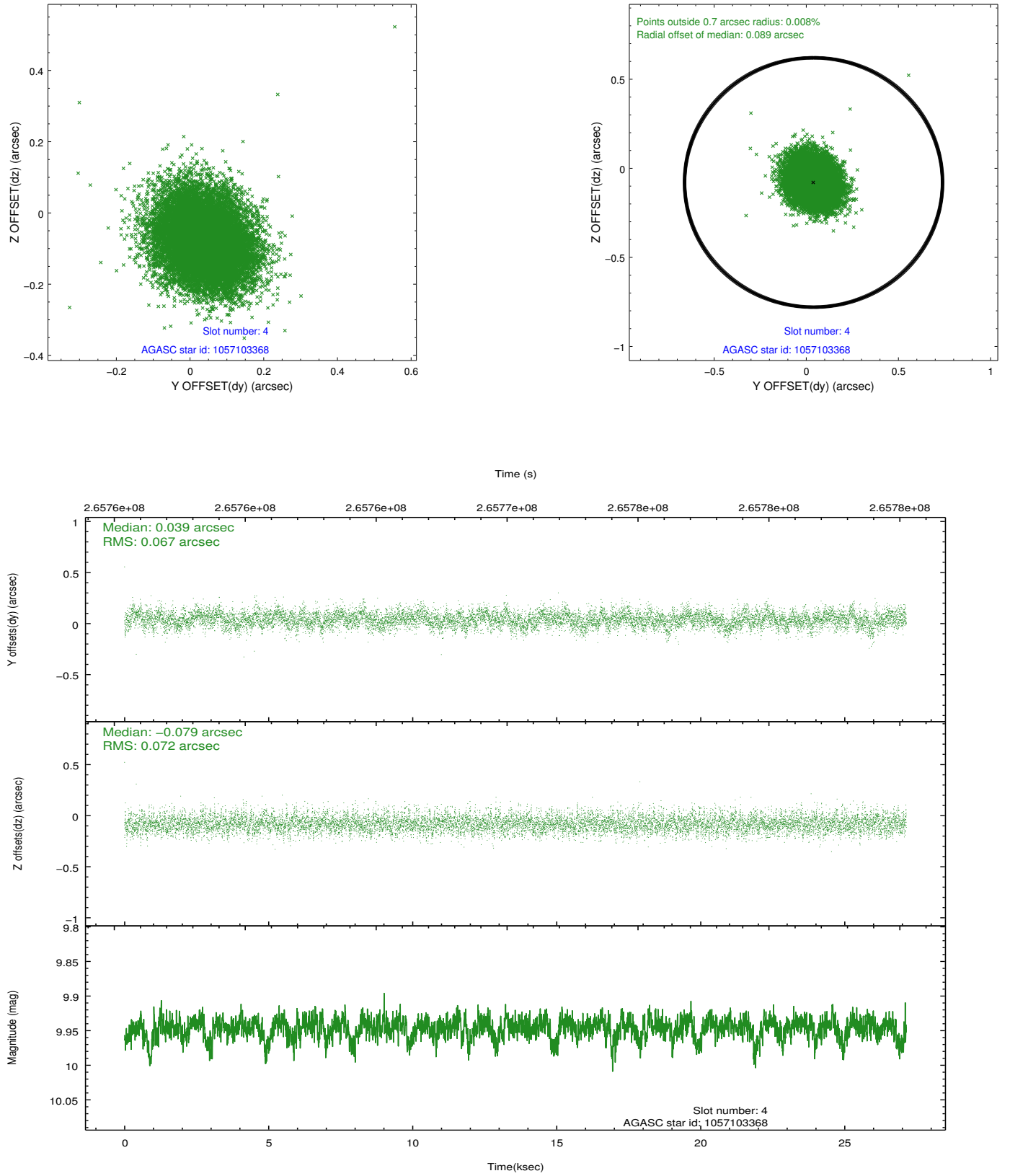
slot	status	id	mag	n_pts	med_dy	med_dz	dr1	dr2	ra	dec	mean_y	mean_z
0	FID	ACIS-I-1	7.24	6620	0.053	-0.048	0.011	0.022	0.000000	0.000000	932.39	-835.03
1	FID	ACIS-I-5	7.23	6621	-0.173	0.061	0.010	0.021	0.000000	0.000000	-1815.86	1062.55
2	FID	ACIS-I-6	7.24	6621	0.030	0.060	0.013	0.023	0.000000	0.000000	397.85	1707.14
3	GUIDE	1057102616	9.77	13228	0.031	0.023	0.138	0.216	50.513713	-50.989529	334.62	-965.59
4	GUIDE	1057103368	9.95	13224	0.039	-0.079	0.104	0.168	50.453346	-50.847644	638.61	-1398.32
5	GUIDE	1057104784	6.89	13239	-0.095	-0.166	0.060	0.096	50.762262	-51.554761	-887.03	755.05
6	GUIDE	1057105888	8.39	13234	-0.062	0.170	0.095	0.145	51.491317	-50.802463	-1528.51	-2347.65
7	GUIDE	1057106544	9.46	13225	0.087	0.054	0.116	0.188	51.180513	-50.778000	-832.47	-2195.83

2.4 Star Slots

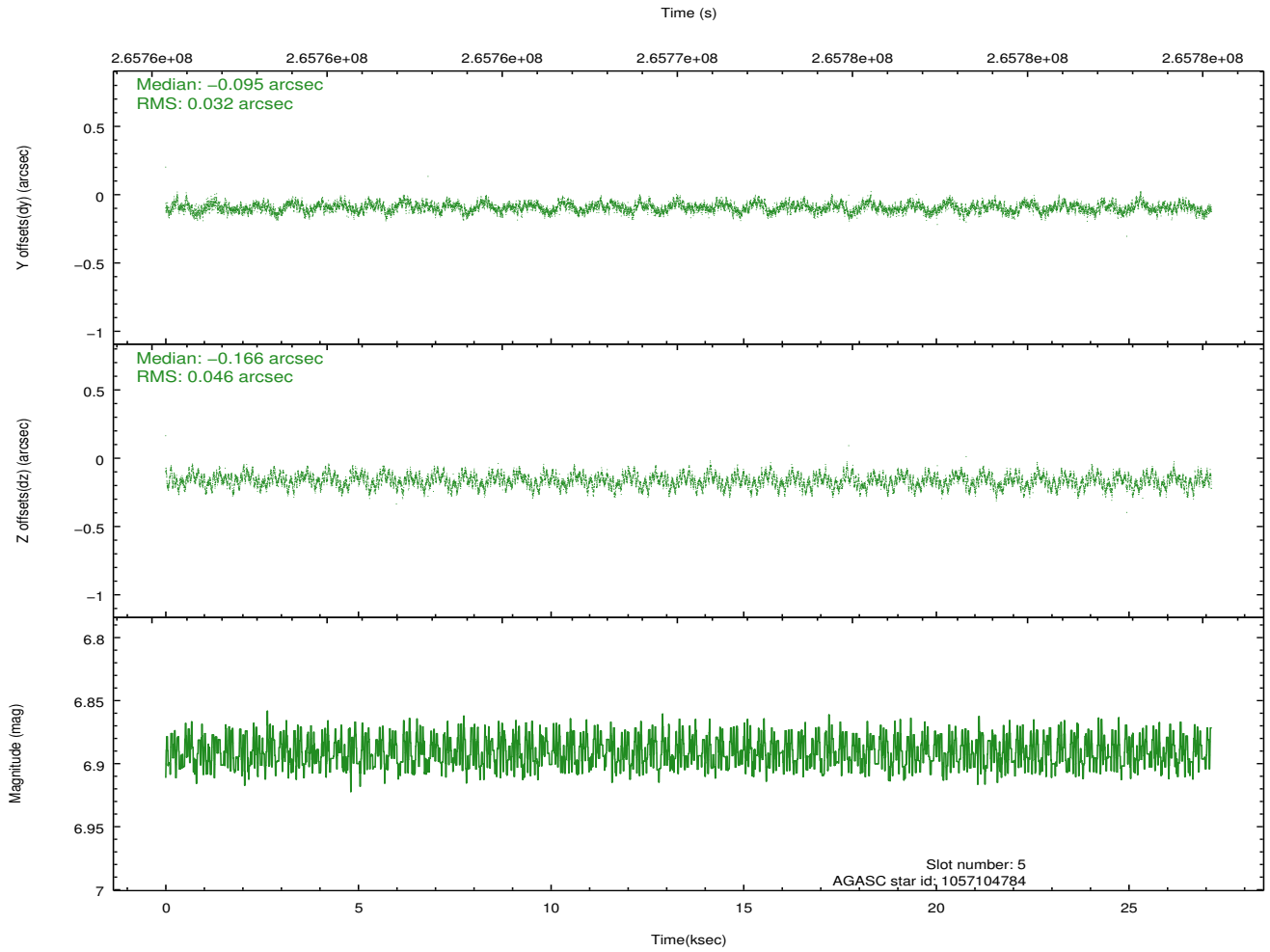
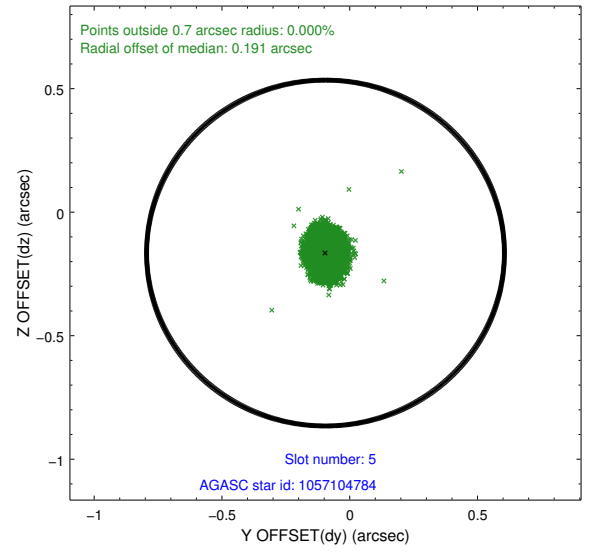
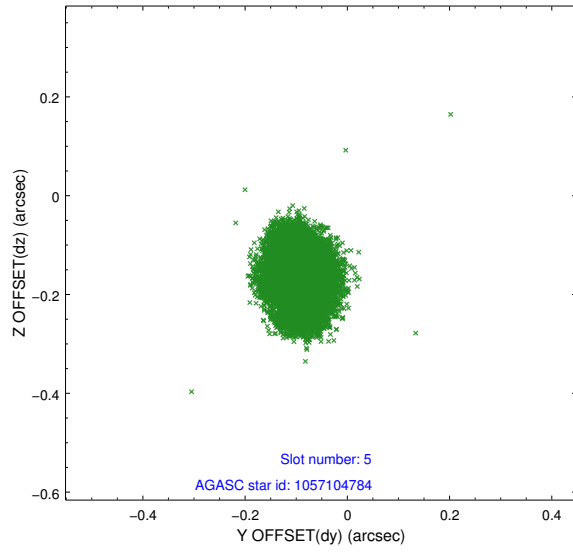
2.4.1 Slot 3



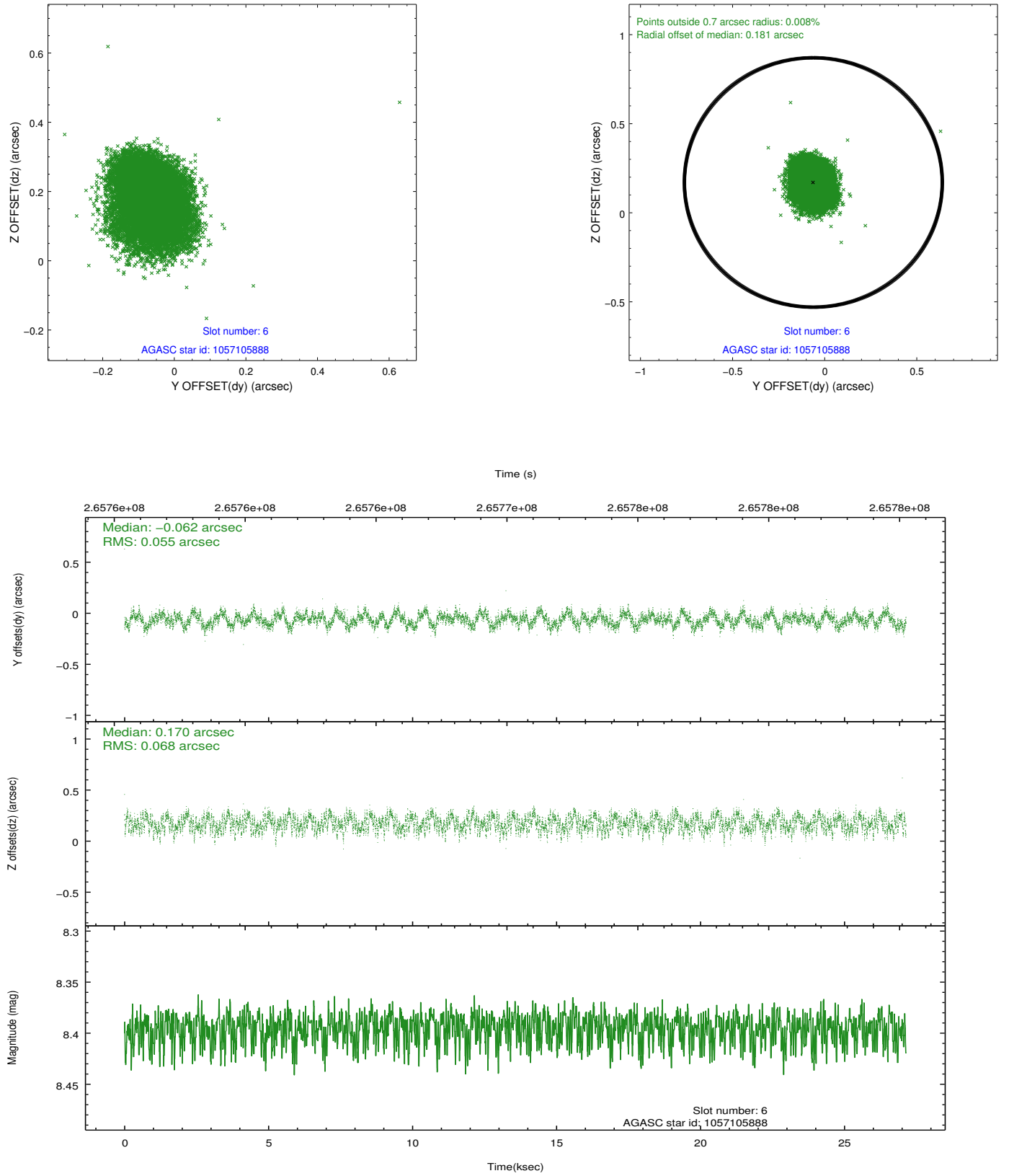
2.4.2 Slot 4



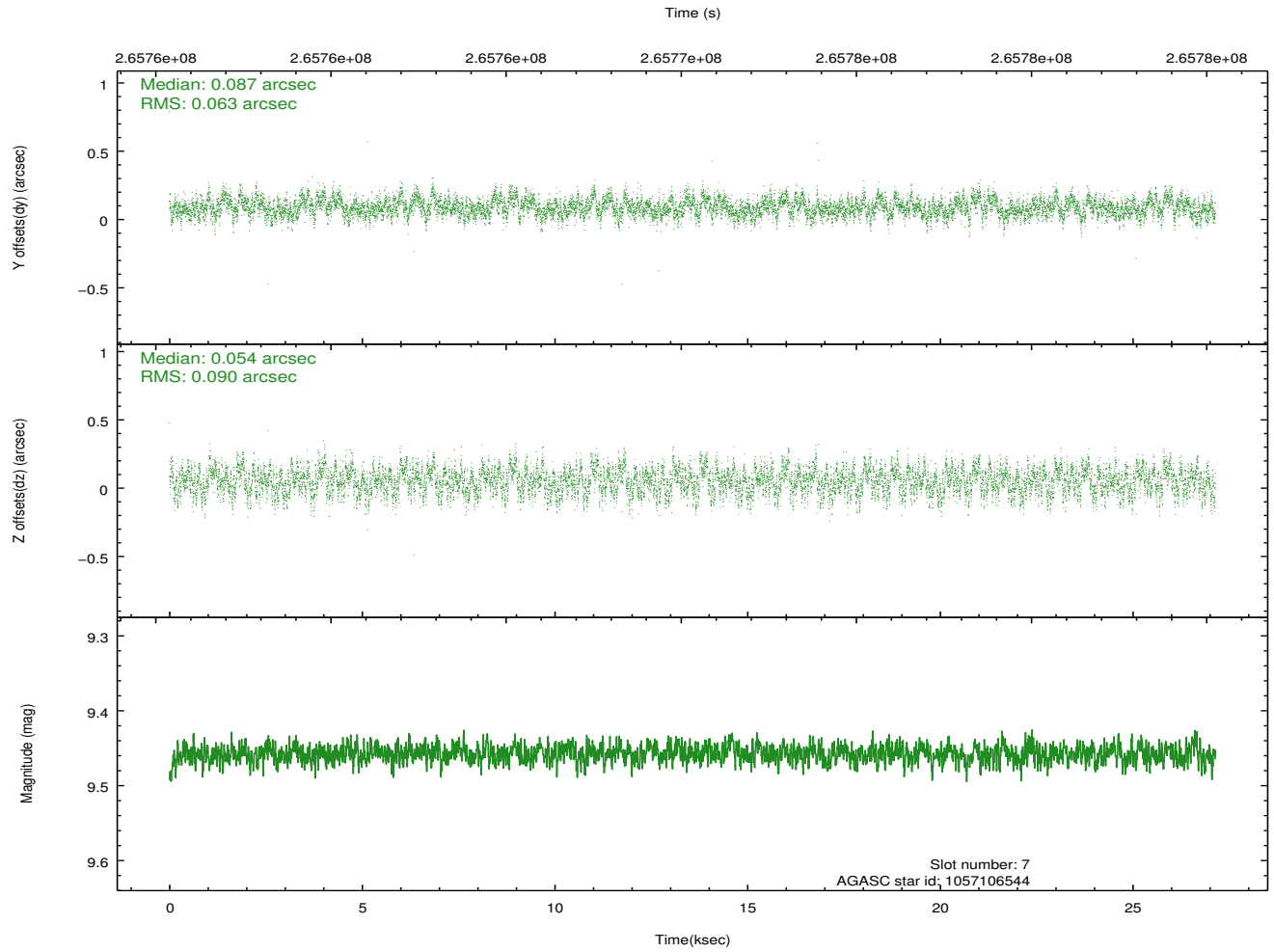
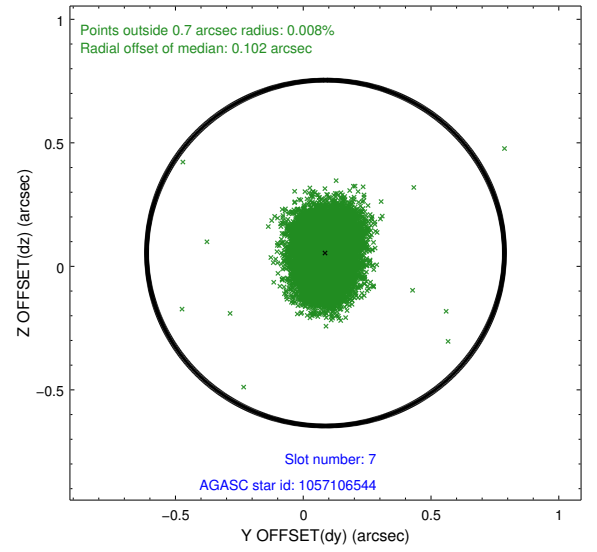
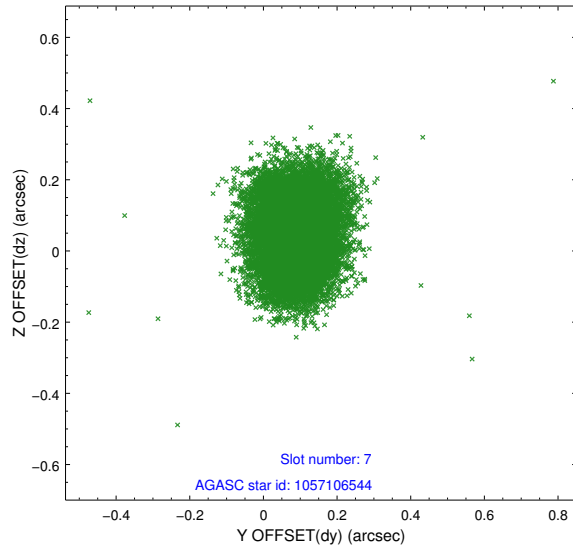
2.4.3 Slot 5



2.4.4 Slot 6

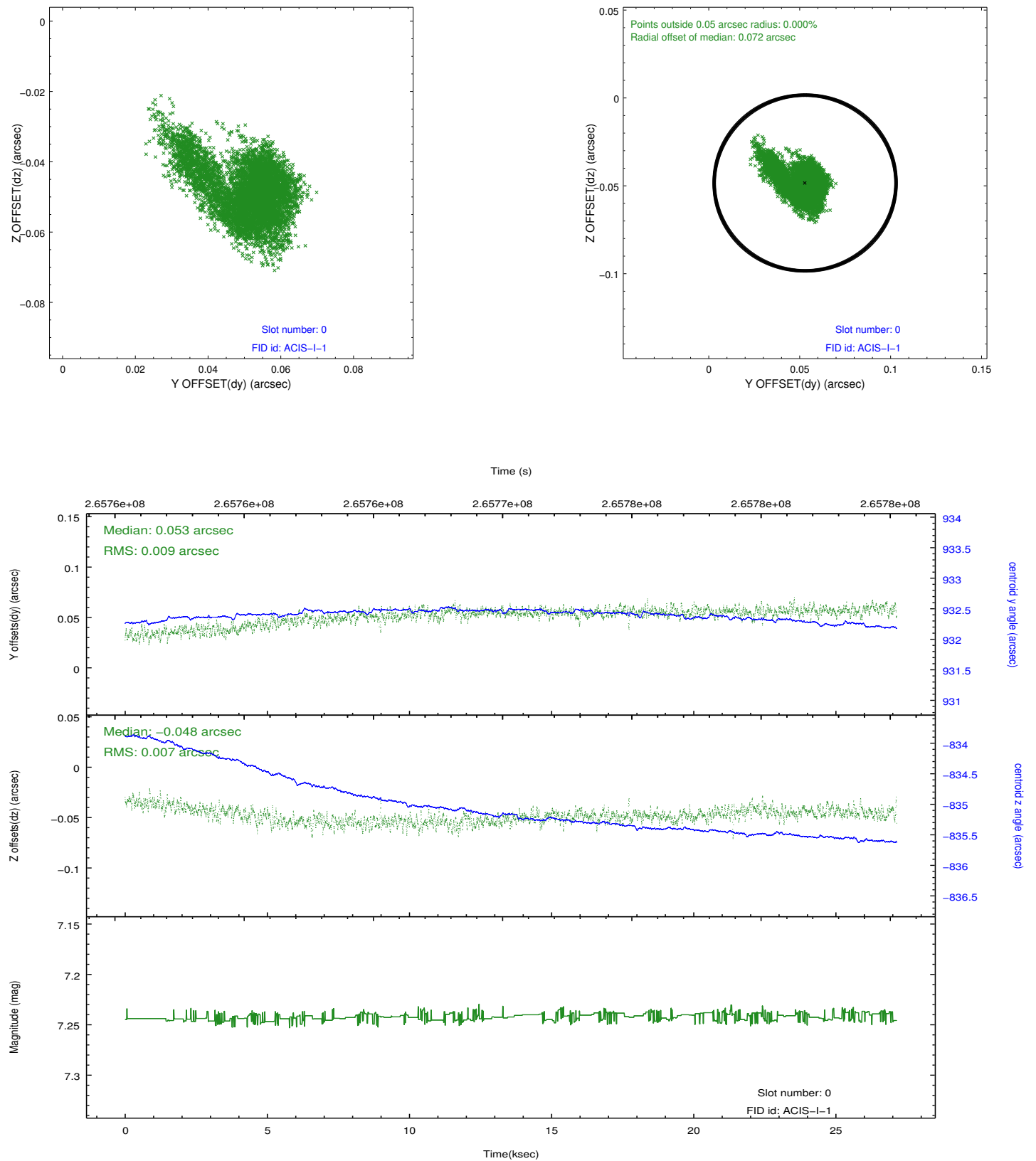


2.4.5 Slot 7

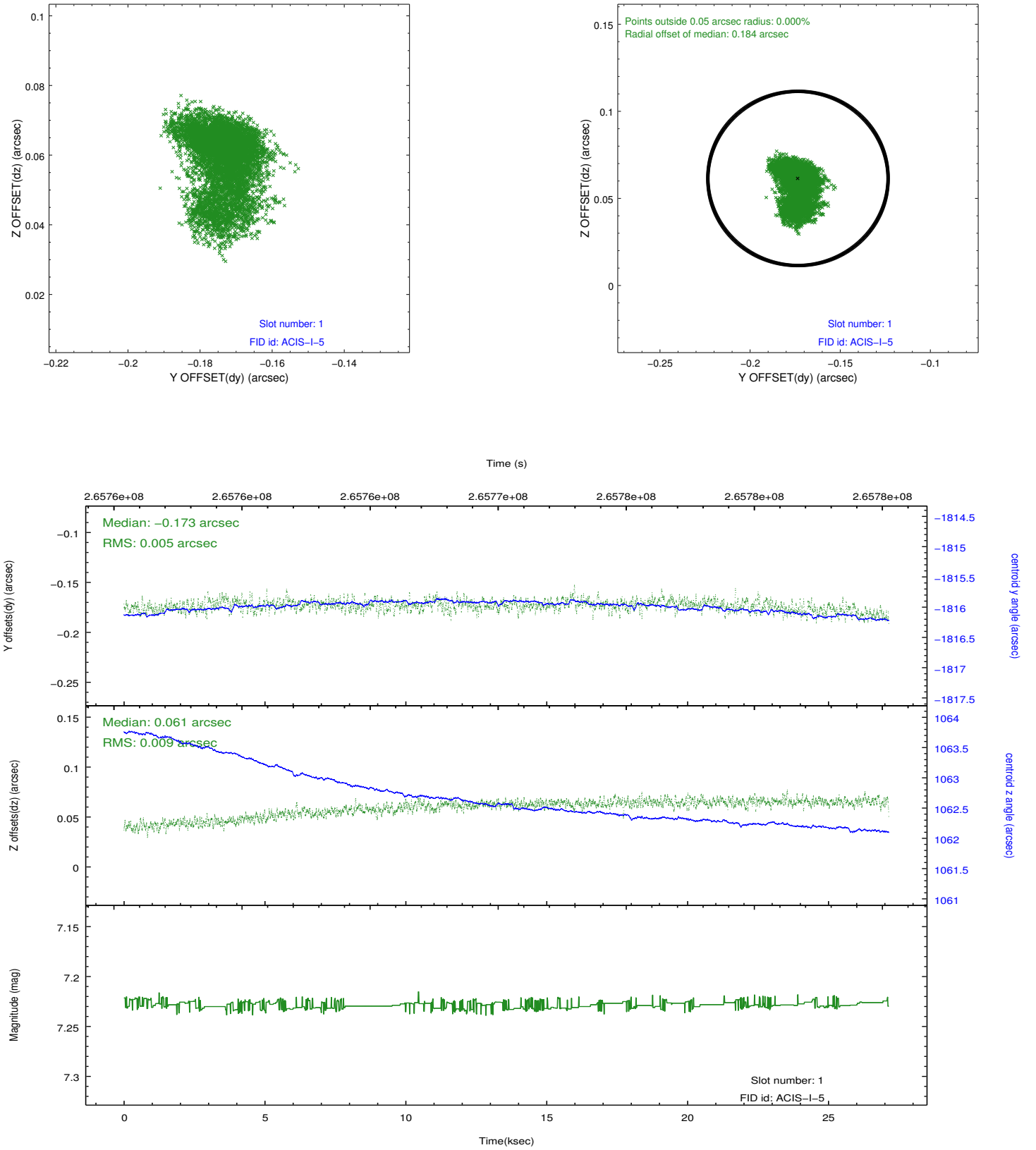


2.5 FID Slots

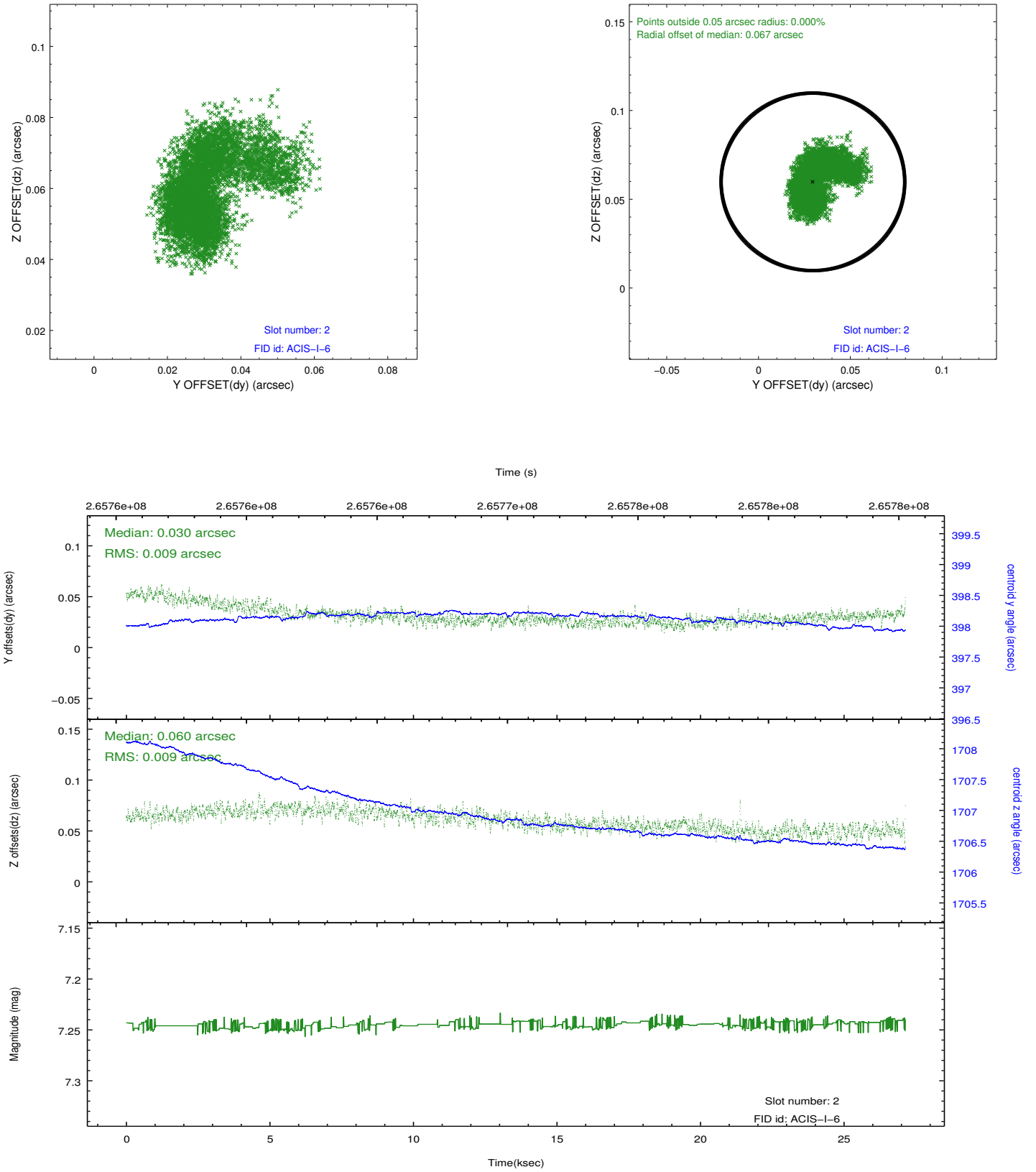
2.5.1 Slot 0



2.5.2 Slot 1



2.5.3 Slot 2



A Summary

A.1 Status

V&V Scientist	Jen Lauer
V&V Date (YYYY-MM-DD)	2012.04.04
V&V Edition	1
V&V Disposition and Status	OK
V&V Charge Time	27.1311589

A.2 Comments

Additional source south of aim point could not be observed because roll angle did not allow chip coverage. No roll constraint was specified.