

# V&V Reference Report

## L2 ASCDS Version : 8.4.3

Observation 7200 - L2 Version 3  
Chandra X-Ray Center

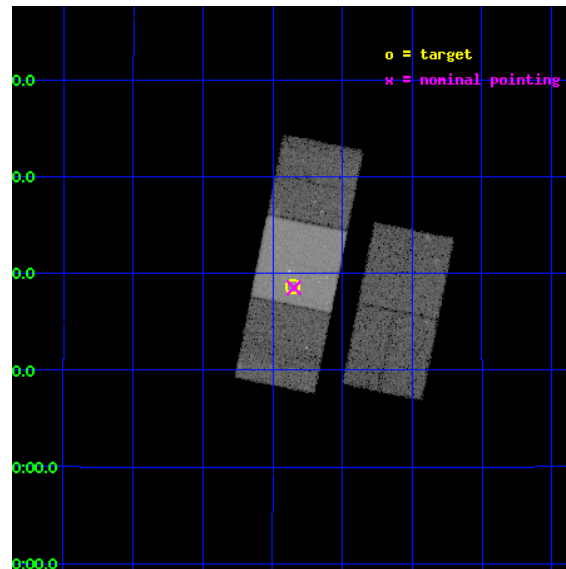
L2 Processing Date : Mar 22 2012

## Contents

<b>1</b>	<b>Front</b>	<b>2</b>
<b>2</b>	<b>OBI</b>	<b>3</b>
2.1	OBI . . . . .	3
2.1.1	Images . . . . .	3
2.1.2	Bias . . . . .	3
2.1.3	Parameters . . . . .	4
2.1.4	Events . . . . .	4
2.2	Compared Parameters . . . . .	5
2.3	Aspect . . . . .	6
2.4	Star Slots . . . . .	9
2.4.1	Slot 3 . . . . .	9
2.4.2	Slot 4 . . . . .	10
2.4.3	Slot 5 . . . . .	11
2.4.4	Slot 6 . . . . .	12
2.4.5	Slot 7 . . . . .	13
2.5	FID Slots . . . . .	14
2.5.1	Slot 0 . . . . .	14
2.5.2	Slot 1 . . . . .	15
2.5.3	Slot 2 . . . . .	16
<b>A</b>	<b>Summary</b>	<b>17</b>
A.1	Status . . . . .	17
A.2	Comments . . . . .	17

# 1 Front

seq_num	701325	Sequence number
obs_id	7200	Observation id
title	A Chandra Study of Optical Hot-Spots in Two Nearby FR II Radio Galaxies	Proposal title
observer	Dr Stephen Murray	Principal investigator
object	3C 33	Source name
dtcycle	0	&#160
cycle	P	events from which exps? Prim/Second/Both
ra_targ	17.213333	Observer's specified target RA [deg]
dec_targ	13.310119	Observer's specified target Dec [deg]
ra_nom	17.211936027173	Nominal RA [deg]
dec_nom	13.308561615727	Nominal Dec [deg]
roll_nom	281.45694802479	Nominal Roll [deg]
revision	3	Processing version of data
ontime	20184.099961162	Sum of GTIs [s]
livetime	19920.379835851	Livetime [s]
ontime2	20184.099961162	Sum of GTIs [s]
ontime3	20184.099961162	Sum of GTIs [s]
ontime6	20184.099961162	Sum of GTIs [s]
ontime7	20184.099961162	Sum of GTIs [s]
ontime8	20184.099961162	Sum of GTIs [s]
l2events	164139	Number of level 2 events

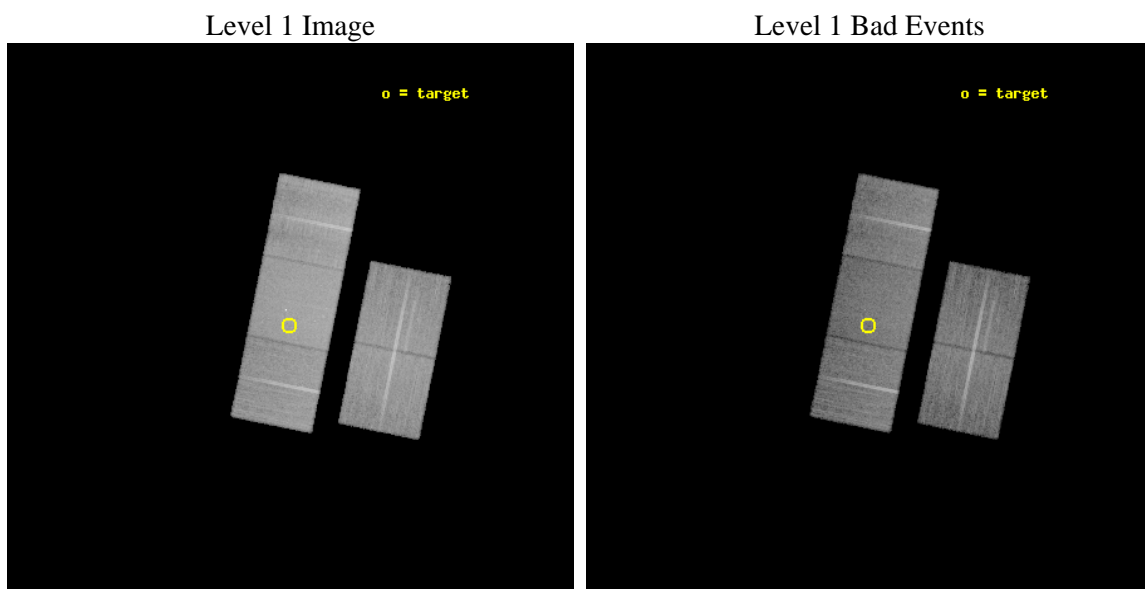




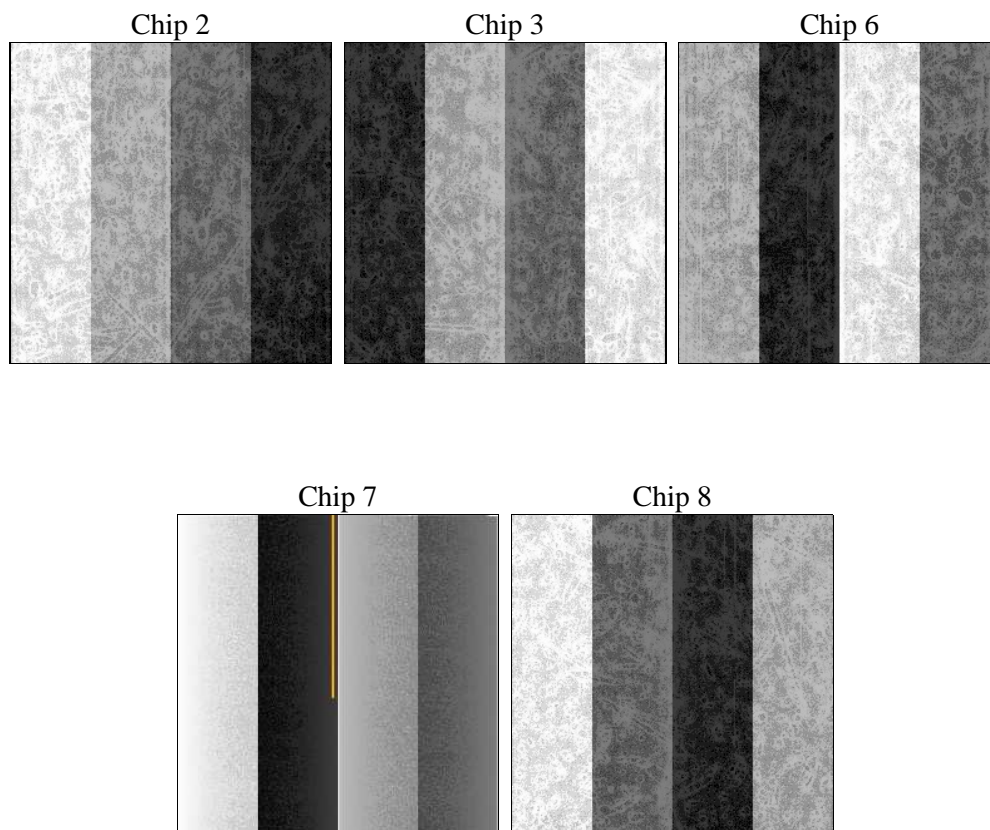
## 2 OBI

### 2.1 OBI

#### 2.1.1 Images



#### 2.1.2 Bias



### 2.1.3 Parameters

obi_num	0	Obi number	sched_exp_time	20000.000000	[s] Scheduled observation exposure time
ascdsver	8.4.3	Processing system revision	ontime	20184.099961162	Sum of GTIs [s]
caldbver	4.4.8	&#160	ontime2	20184.099961162	Sum of GTIs [s]
date	2012-03-22T22:47:09	Date and time of file creation	ontime3	20184.099961162	Sum of GTIs [s]
revision	3	Processing version of data	ontime6	20184.099961162	Sum of GTIs [s]
			ontime7	20184.099961162	Sum of GTIs [s]
			ontime8	20184.099961162	Sum of GTIs [s]
			l1events	959859	Number of level 1 events

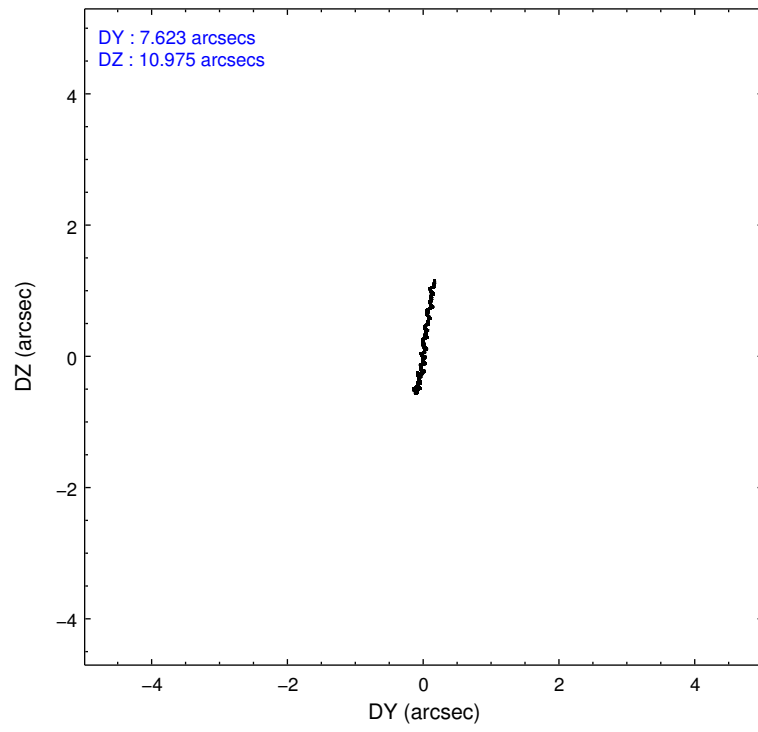
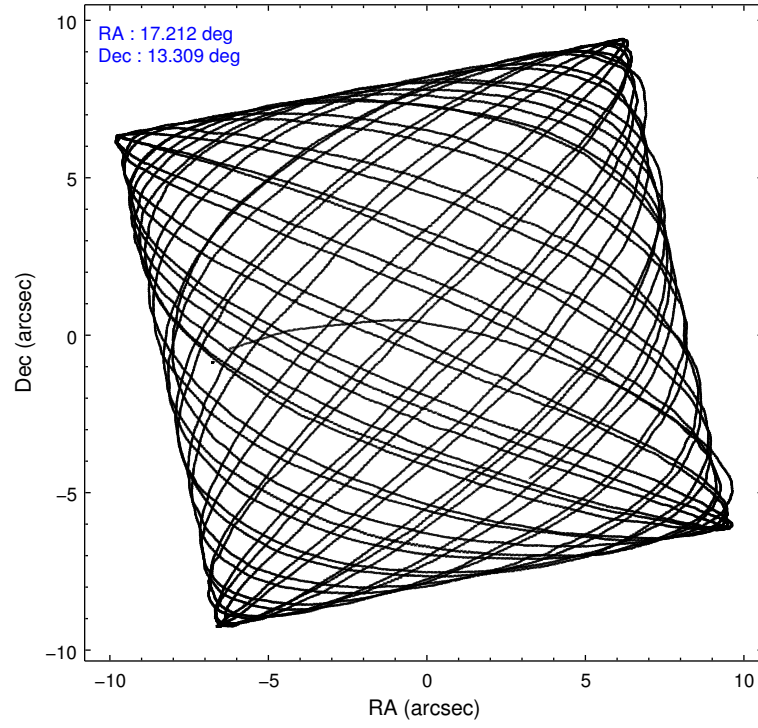
### 2.1.4 Events

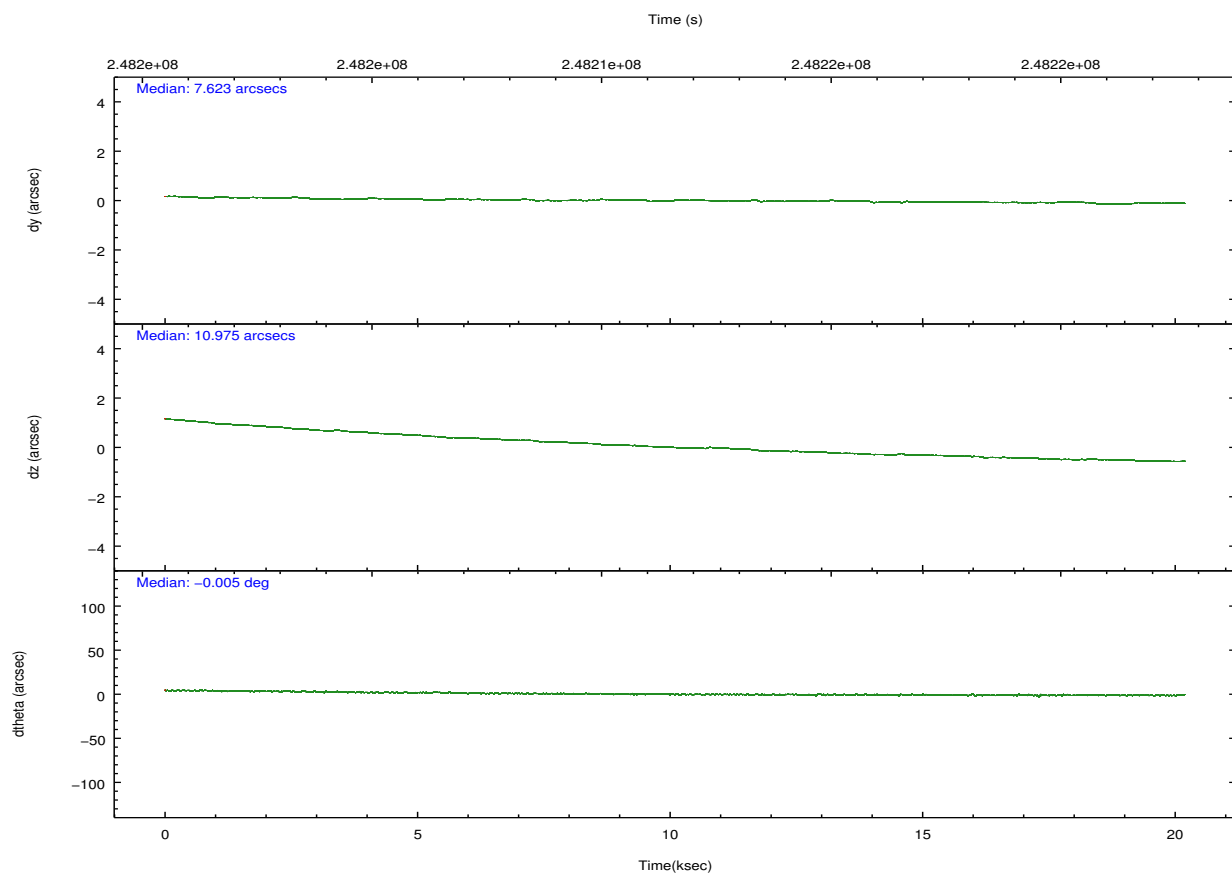
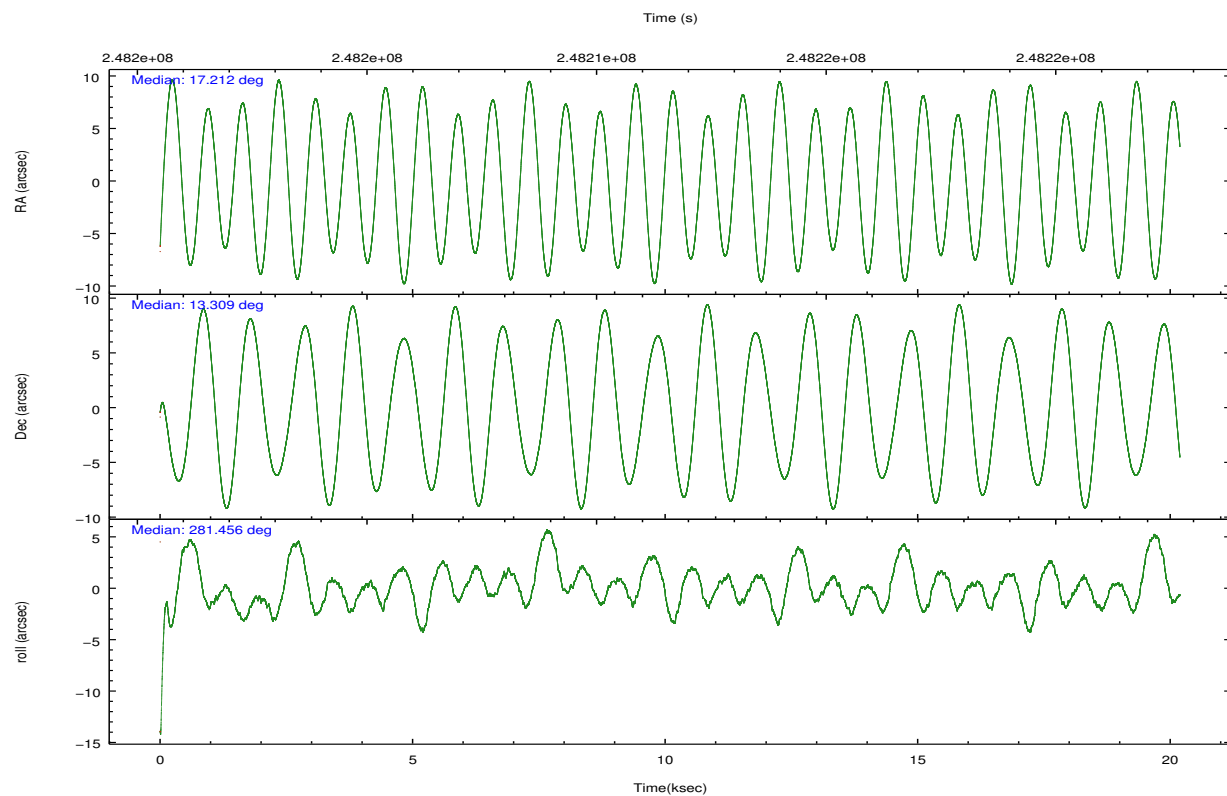
	ccd 2	ccd 3	ccd 6	ccd 7	ccd 8		ccd 2	ccd 3	ccd 6	ccd 7	ccd 8
level 1 events	168209	162576	175247	233248	220579	grade 0 events	9111	8451	9608	9191	15725
rejected events	148675	143672	153448	138532	173176		5%	5%	5%	3%	7%
rejected %	88%	88%	87%	59%	78%	grade 1 events	99	98	107	226	167
							0%	0%	0%	0%	0%
						grade 2 events	3942	3685	4528	19627	10770
							2%	2%	2%	8%	4%
						grade 3 events	1910	1887	2066	8609	4905
							1%	1%	1%	3%	2%
						grade 4 events	1878	1874	1962	8731	4613
							1%	1%	1%	3%	2%
						grade 5 events	6249	7516	8083	22180	10508
							3%	4%	4%	9%	4%
						grade 6 events	3256	3547	4264	51546	12804
							1%	2%	2%	22%	5%
						grade 7 events	141764	135518	144629	113138	161087
							84%	83%	82%	48%	73%

## 2.2 Compared Parameters

Parameter	Planned	Actual	Parameter	Planned	Actual
Instrument	ACIS	ACIS	Obspar format version number	7	7
Detector	ACIS-23678	ACIS-23678	Obspar file type	PREDICTED	ACTUAL
Grating	NONE	NONE	Obspar update status	NONE	UPDATED
Data mode	FAINT	FAINT	Number of optional ACIS chips dropped	0	0
Observation mode	POINTING	POINTING	On-chip summing requested	N	N
[deg] Pointing RA	17.193096	17.21193602717301	Subarray requested	NONE	NONE
[deg] Pointing Dec	13.328733	13.30856161572693	Alternating exposures requested	N	N
[deg] Pointing Roll	281.304669	281.456948024791	[s] Primary exposure time	0.000000	3.1
[mm] SIM focus pos	-0.684267	-0.6828225247311905			
[mm] SIM defocus	0	0.001444936568705701			
[mm] SIM translation stage pos	-190.132523	-190.1400660498719			
[mm] SIM translation stage offset	0	0.00754346686406393			
[s] Observation start time (MET)	248201696.184000	248200333.73145			
Observation start date	2005-11-12T16:53:52	2005-11-12T16:32:13			
[s] Observation end time (MET)	248221696.184000	248222518.31997			
Observation end date	2005-11-12T22:27:12	2005-11-12T22:41:58			
Read mode	TIMED	TIMED			

## 2.3 Aspect



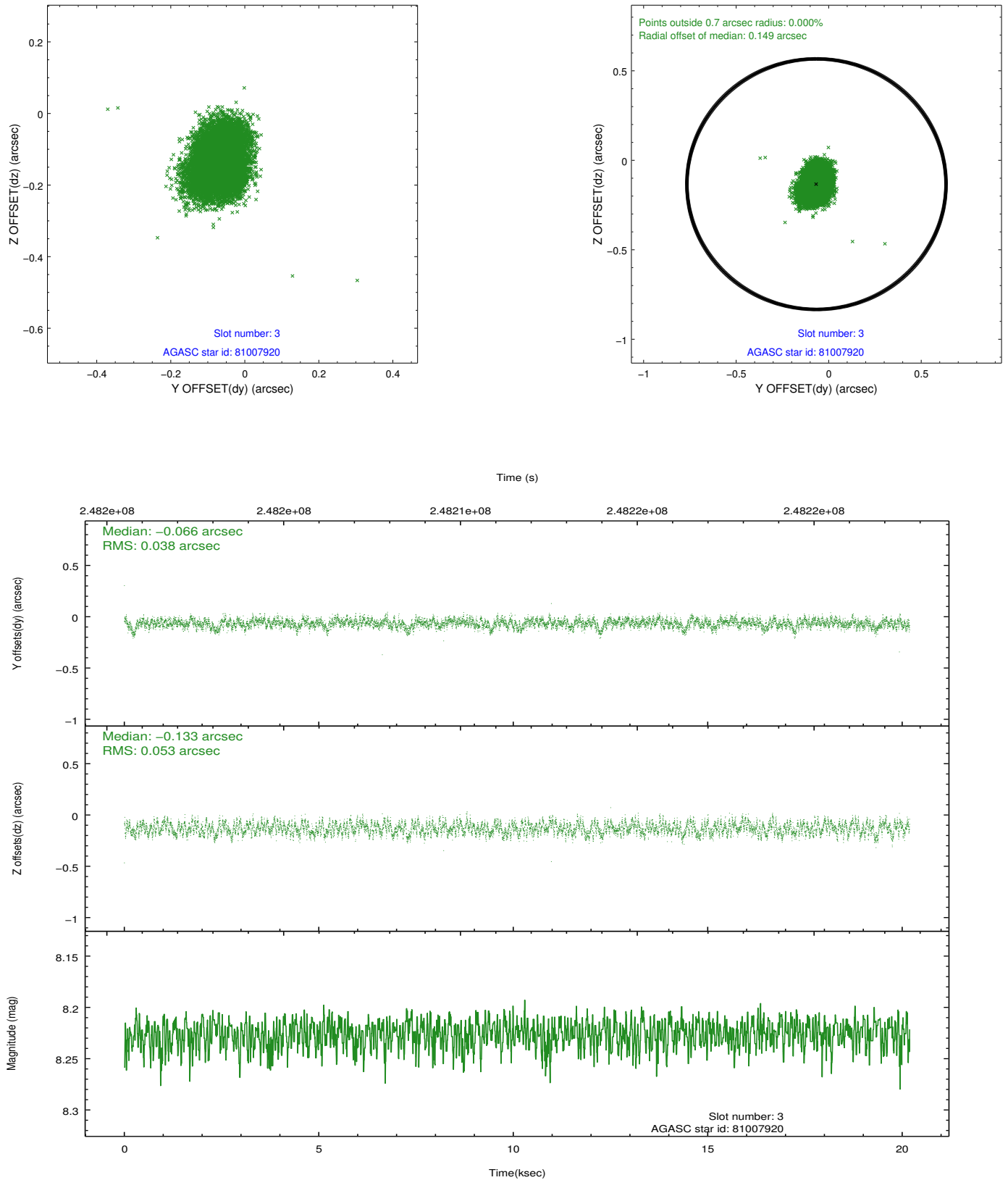


### Slot Statistics

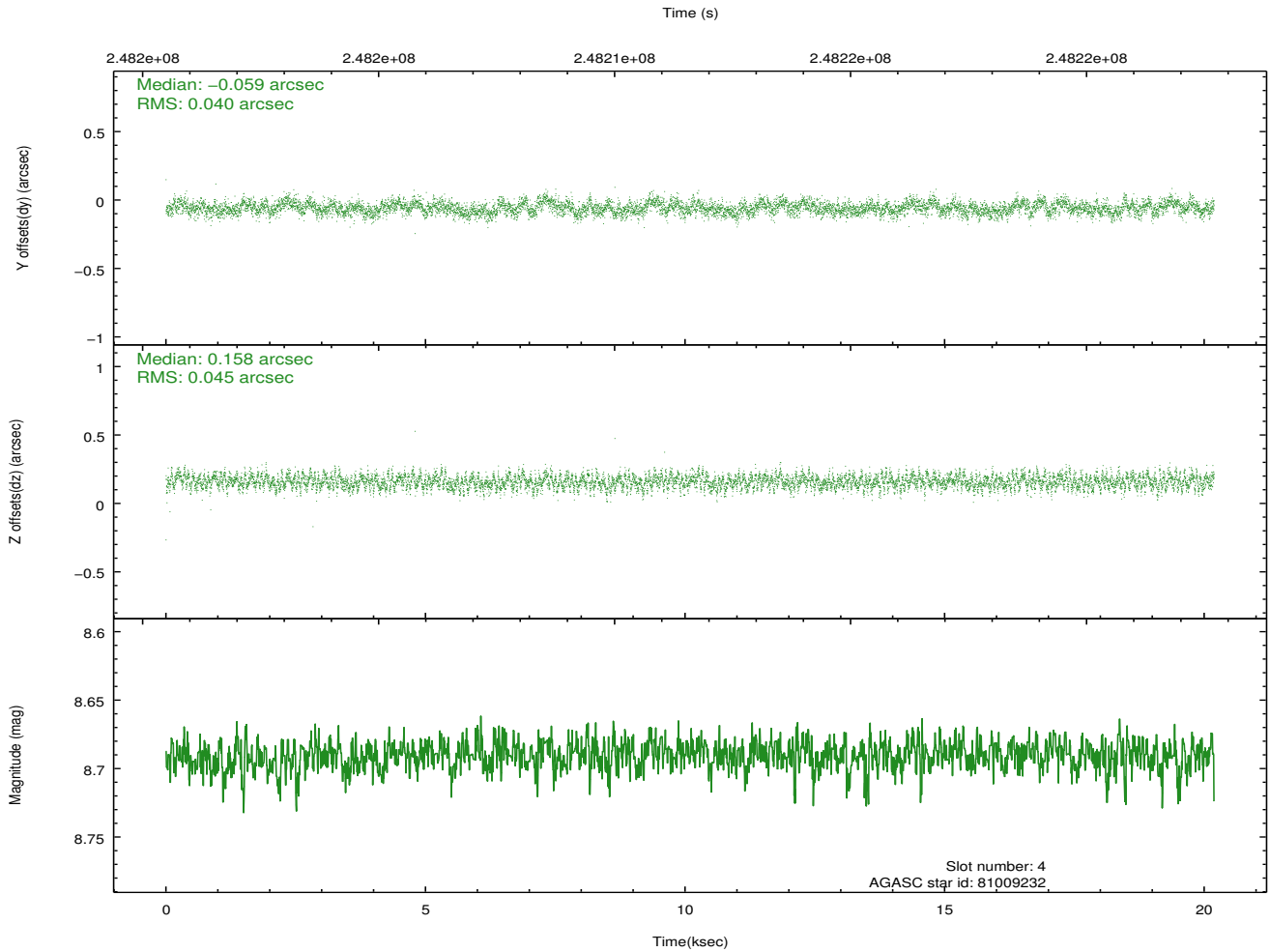
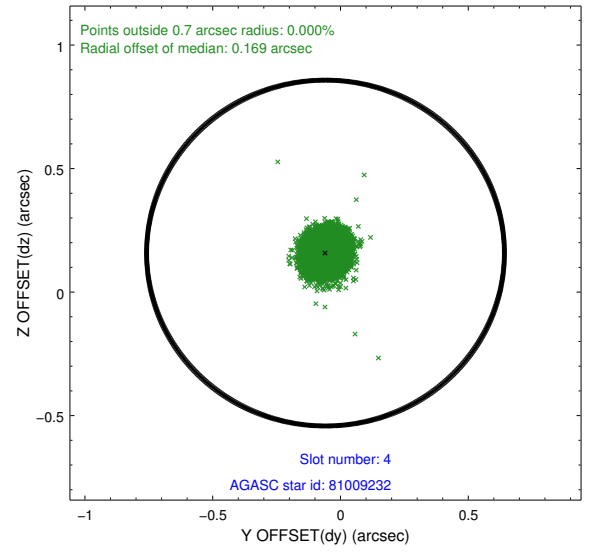
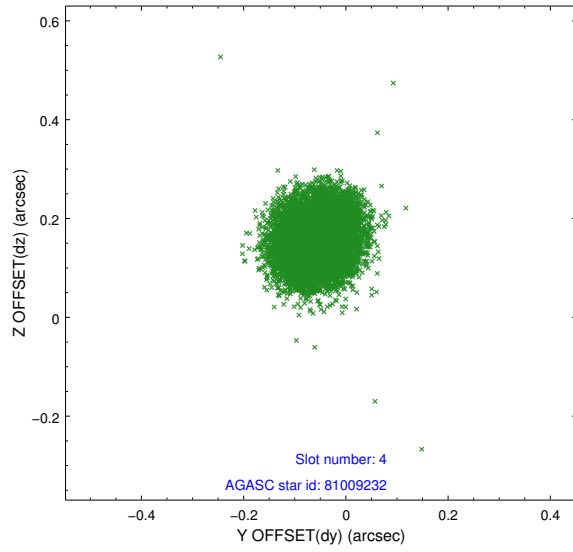
slot	status	id	mag	n_pts	med_dy	med_dz	dr1	dr2	ra	dec	mean_y	mean_z
0	FID	ACIS-S-2	7.11	4925	-0.040	-0.016	0.012	0.024	0.000000	0.000000	-760.40	-1732.38
1	FID	ACIS-S-4	7.21	4923	0.092	0.023	0.010	0.018	0.000000	0.000000	2152.89	176.01
2	FID	ACIS-S-5	7.23	4925	-0.085	0.000	0.010	0.020	0.000000	0.000000	-1813.09	169.79
3	GUIDE	81007920	8.23	9848	-0.066	-0.133	0.070	0.111	16.552631	13.252748	-173.88	-2252.84
4	GUIDE	81009232	8.69	9844	-0.059	0.158	0.064	0.102	17.046481	13.691825	-1382.12	-246.55
5	GUIDE	81011112	8.75	9847	0.092	0.090	0.067	0.107	17.296463	12.693067	2315.32	-92.25
6	GUIDE	81012328	9.65	9825	0.240	0.028	0.102	0.165	17.237006	12.753828	2060.68	-254.47
7	GUIDE	81005408	7.42	9849	-0.207	-0.141	0.063	0.096	16.652176	13.884607	-2334.27	-1460.94

## 2.4 Star Slots

### 2.4.1 Slot 3

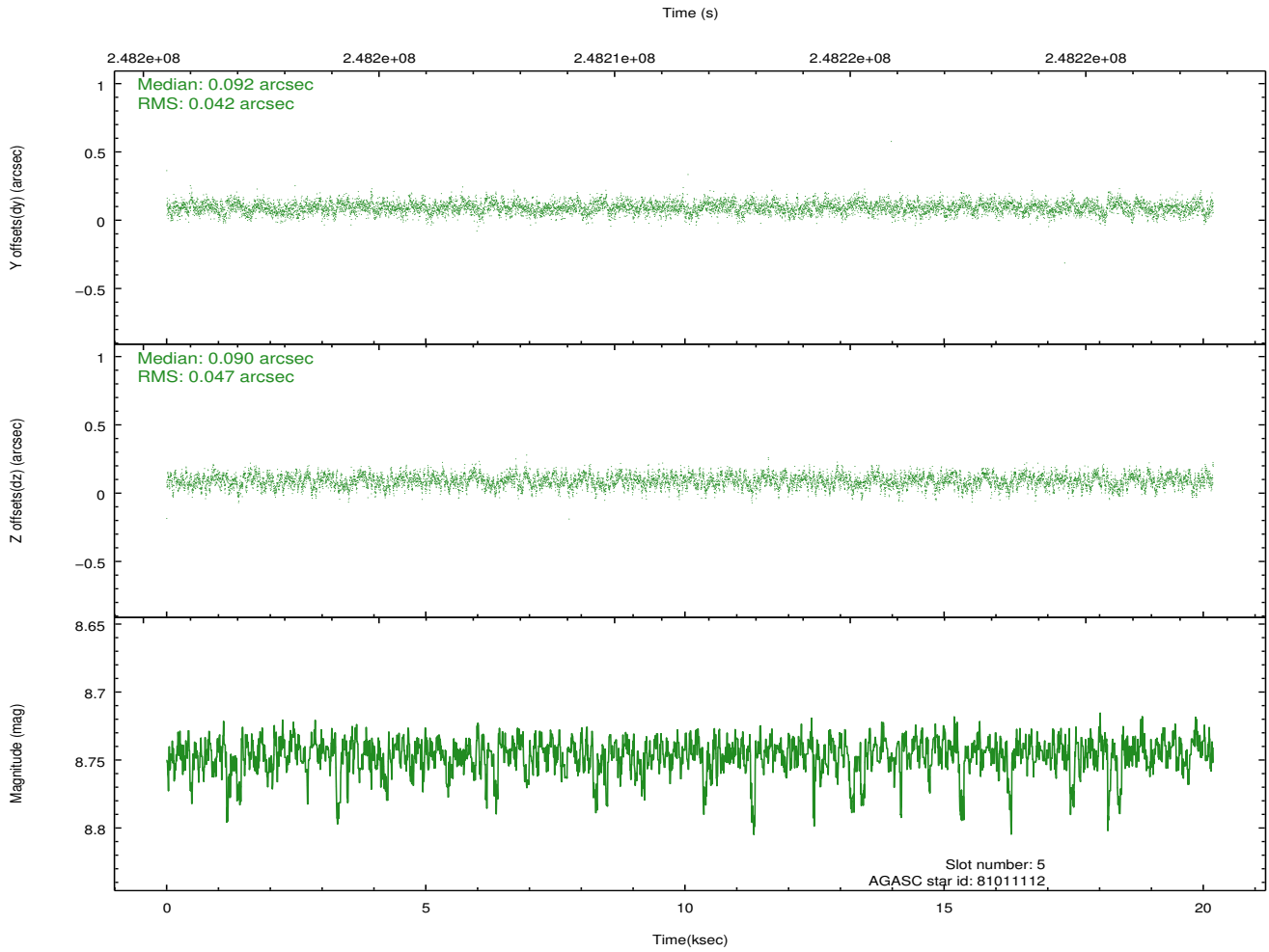
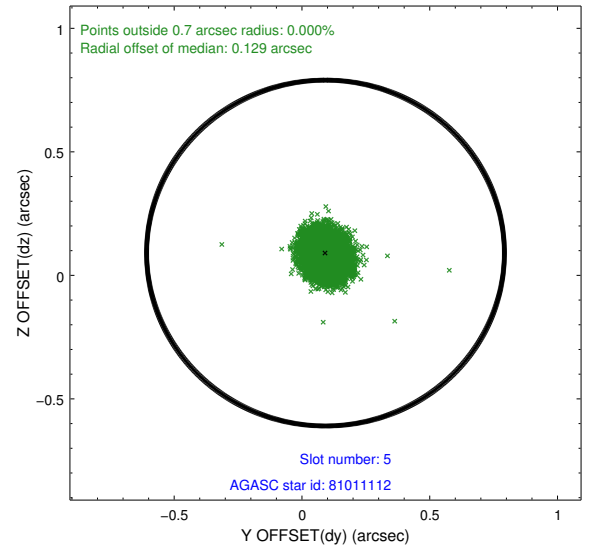
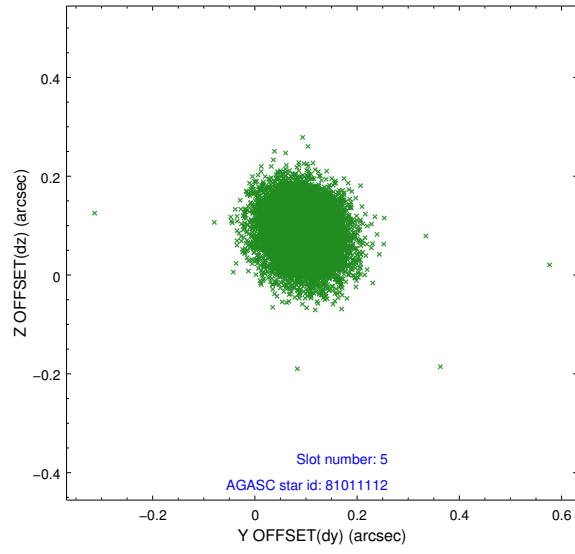


## 2.4.2 Slot 4

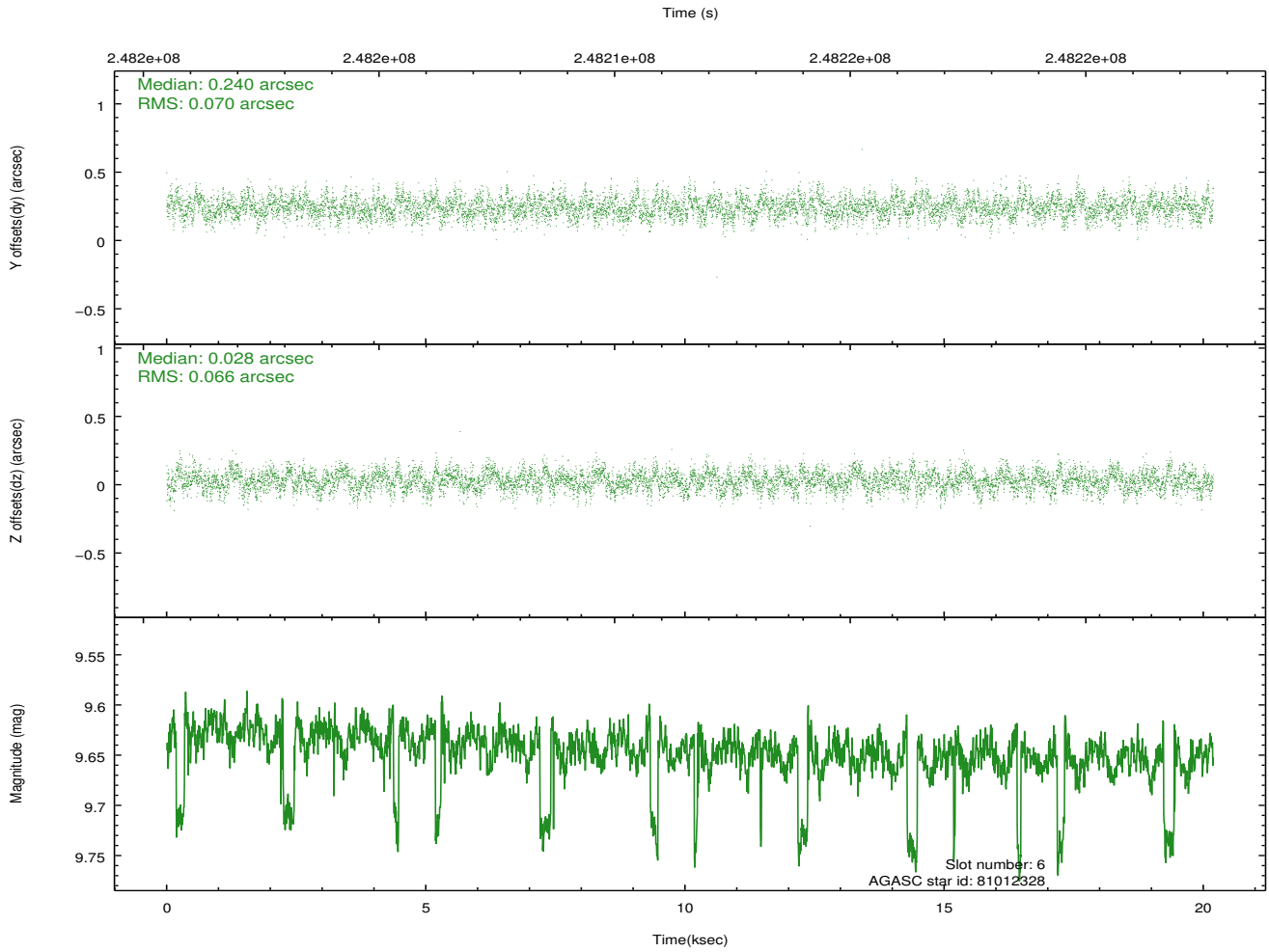
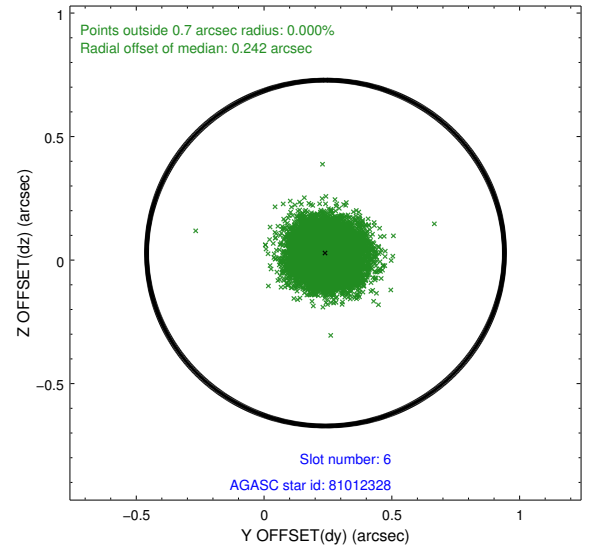
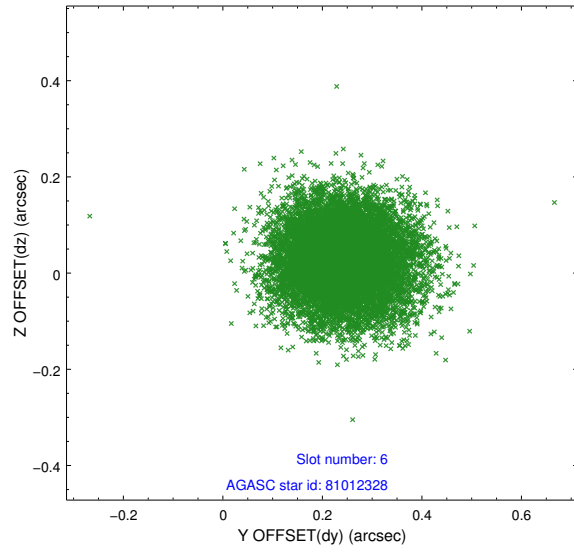




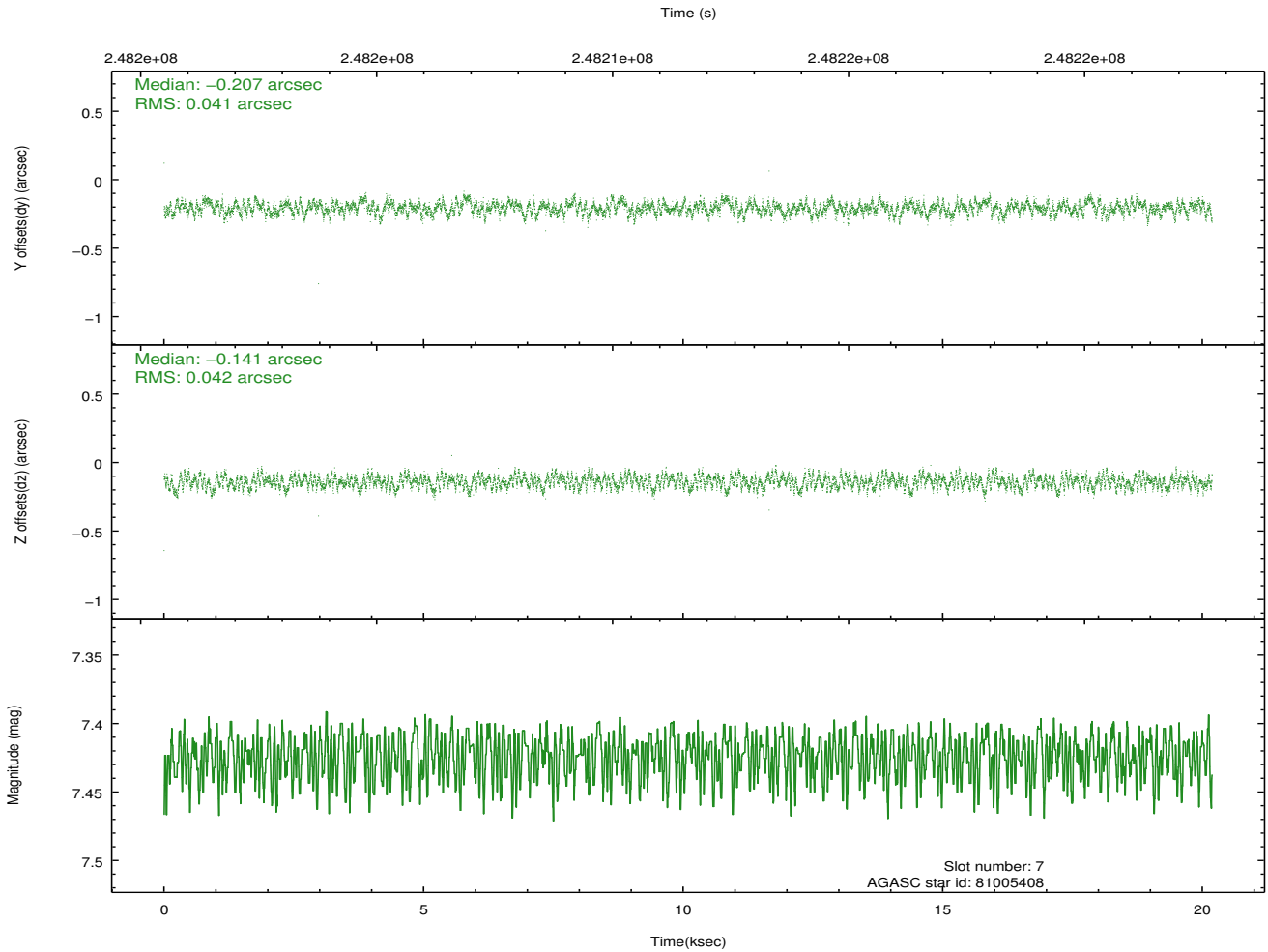
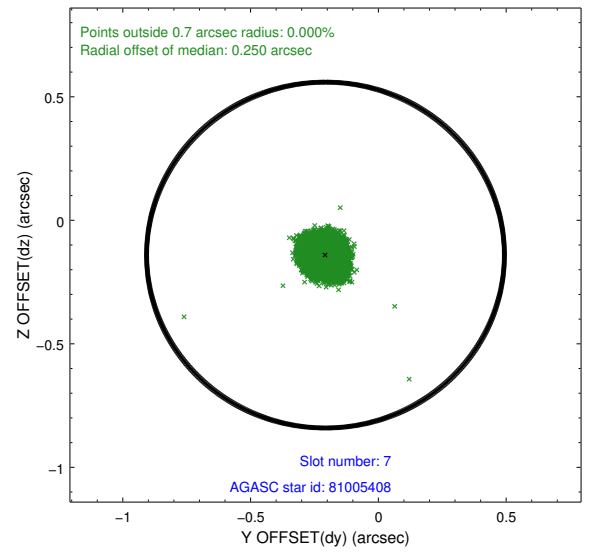
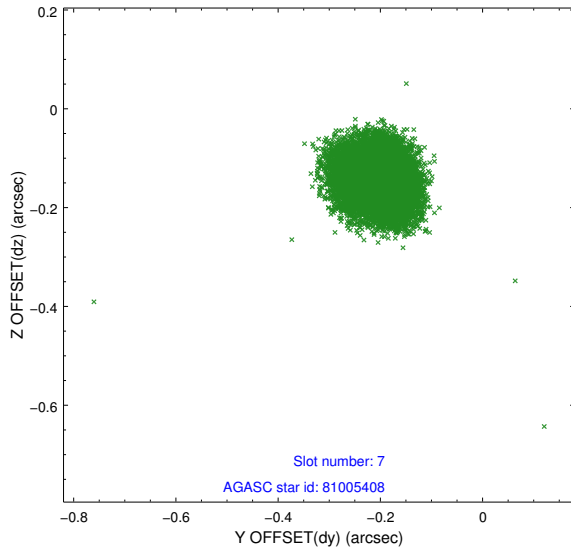
### 2.4.3 Slot 5



## 2.4.4 Slot 6

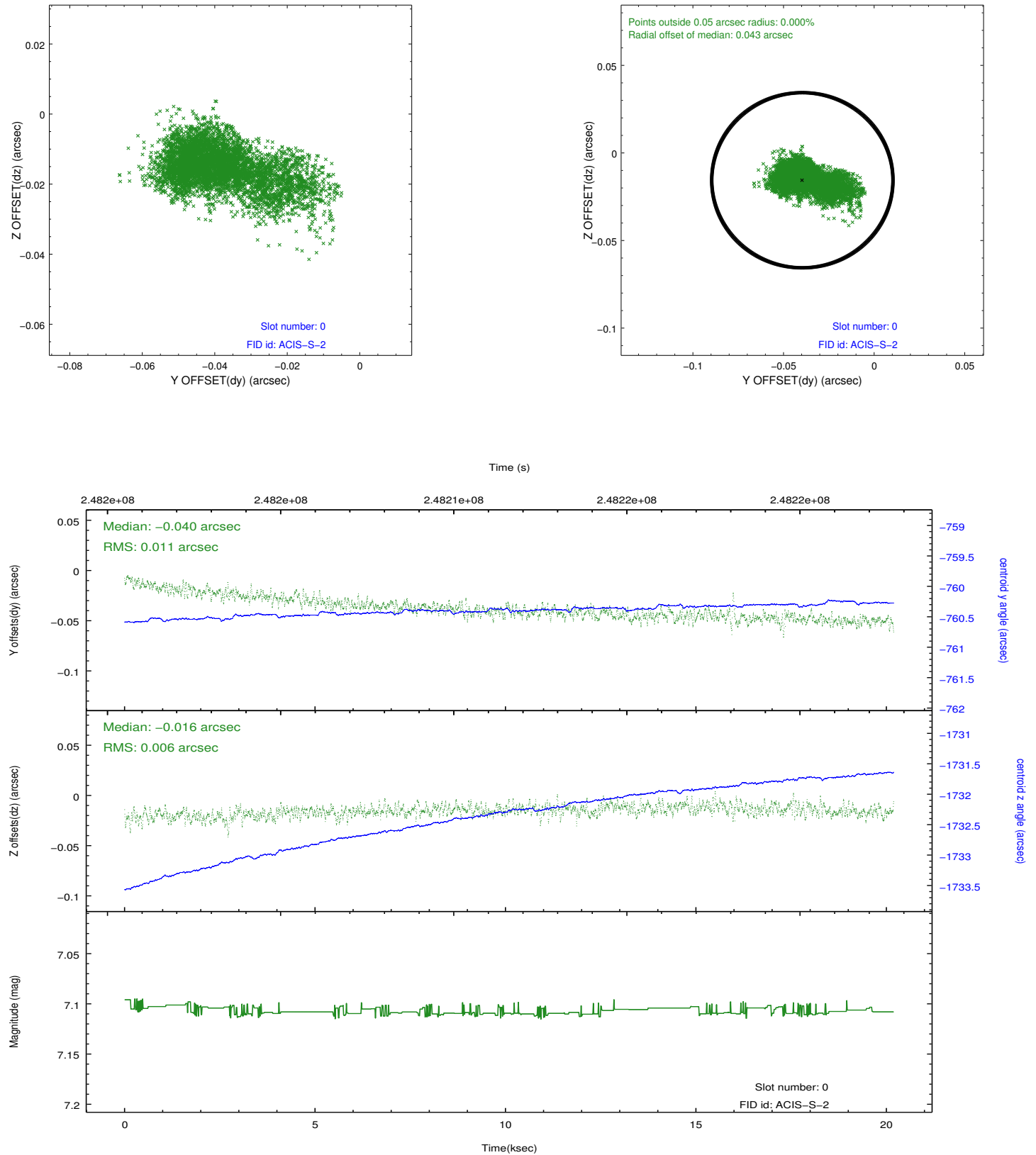


## 2.4.5 Slot 7

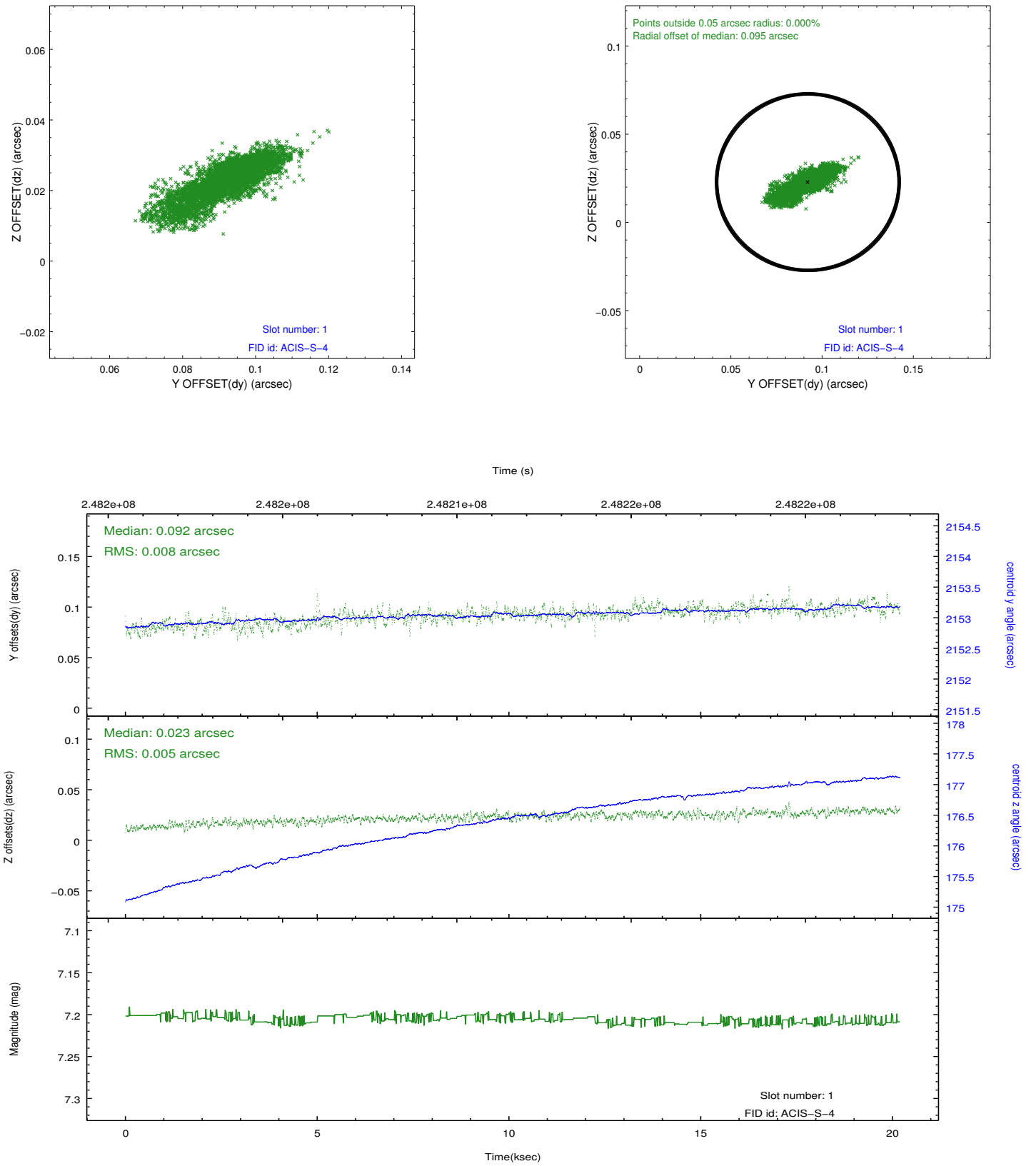


## 2.5 FID Slots

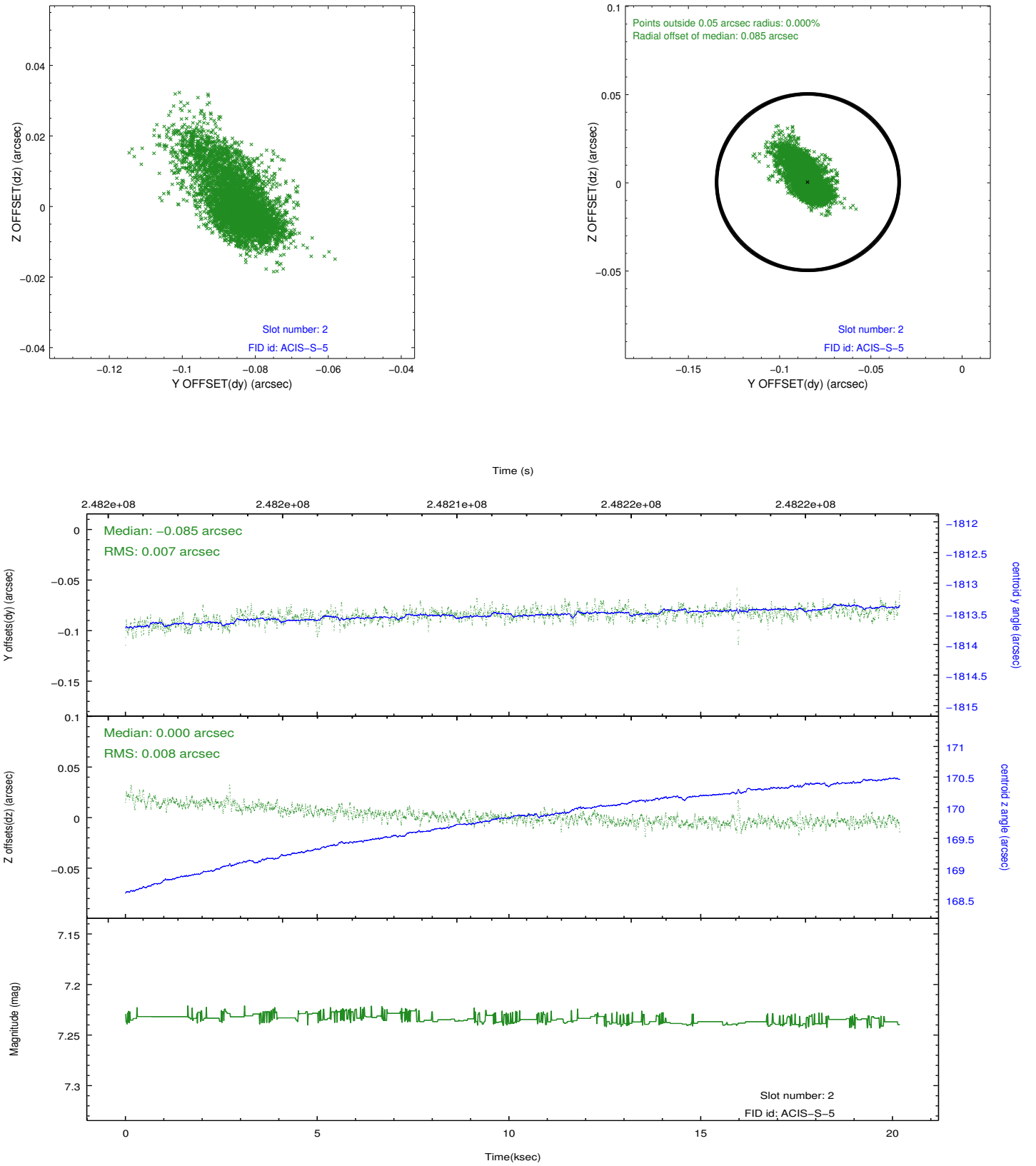
### 2.5.1 Slot 0



## 2.5.2 Slot 1



### 2.5.3 Slot 2



## A Summary

### A.1 Status

V&V Scientist	Jen Lauer
V&V Date (YYYY-MM-DD)	2012.03.23
V&V Edition	1
V&V Disposition and Status	OK
V&V Charge Time	20.18409

### A.2 Comments