

V&V Reference Report

L2 ASCDS Version : 8.4.3.1

Observation 6889 - L2 Version 2
Chandra X-Ray Center

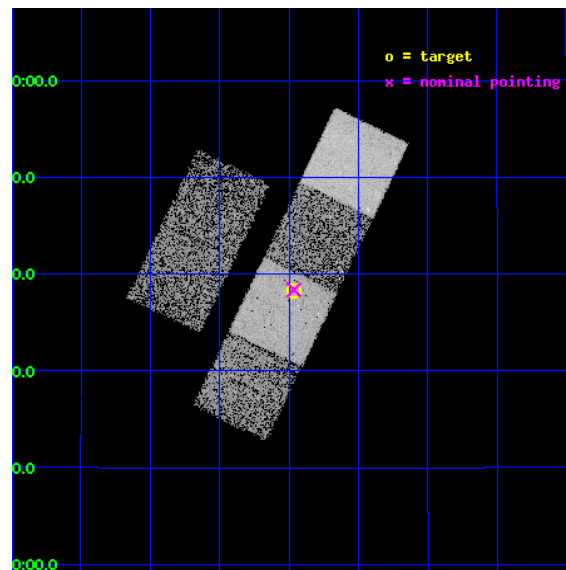
L2 Processing Date : Apr 5 2012

Contents

1	Front	2
2	OBI	3
2.1	OBI	3
2.1.1	Images	3
2.1.2	Bias	3
2.1.3	Parameters	4
2.1.4	Events	4
2.2	Compared Parameters	5
2.3	Aspect	6
2.4	Star Slots	9
2.4.1	Slot 3	9
2.4.2	Slot 4	10
2.4.3	Slot 5	11
2.4.4	Slot 6	12
2.4.5	Slot 7	13
2.5	FID Slots	14
2.5.1	Slot 0	14
2.5.2	Slot 1	15
2.5.3	Slot 2	16
A	Summary	17
A.1	Status	17
A.2	Comments	17

1 Front

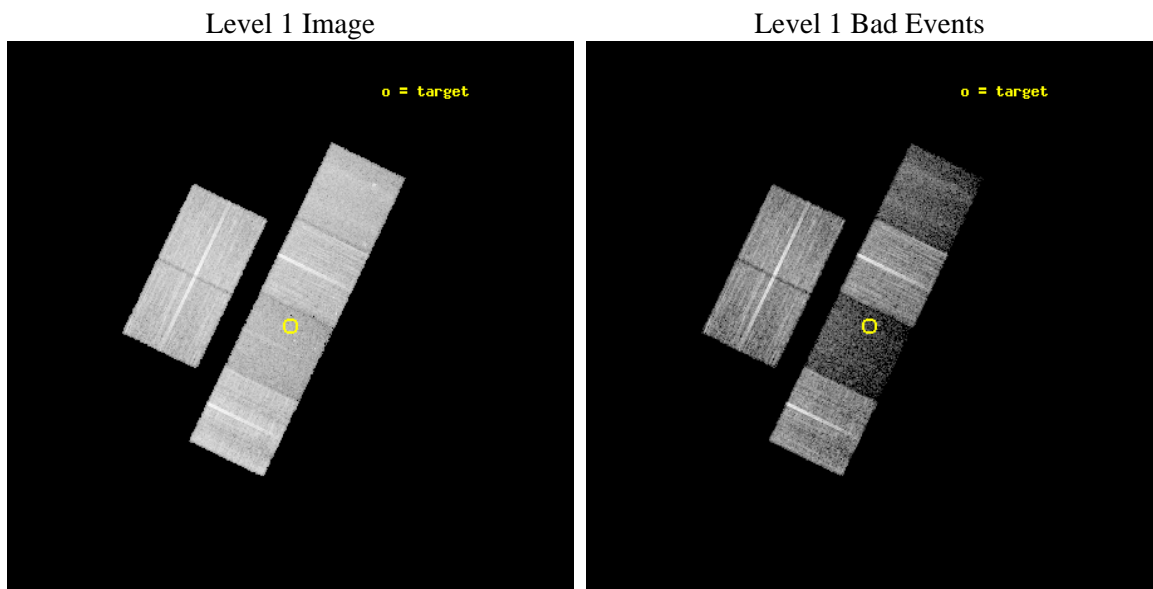
seq_num	701306	Sequence number
obs_id	6889	Observation id
title	A Uniform Chandra Survey of the Brightest and Most Extreme SDSS BALQSOs	Proposal title
observer	Dr. Scott Anderson	Principal investigator
object	SDSS J004527.69+143816.2	Source name
dtcycle	0	
cycle	P	events from which exps? Prim/Second/Both
ra_targ	11.365417	Observer's specified target RA [deg]
dec_targ	14.637833	Observer's specified target Dec [deg]
ra_nom	11.366400216735	Nominal RA [deg]
dec_nom	14.639664923745	Nominal Dec [deg]
roll_nom	115.76138713217	Nominal Roll [deg]
revision	2	Processing version of data
ontime	11544.35451597	Sum of GTIs [s]
livetime	11398.172947913	Livetime [s]
ontime2	11541.154585719	Sum of GTIs [s]
ontime3	11537.749435484	Sum of GTIs [s]
ontime5	11544.313475966	Sum of GTIs [s]
ontime6	11537.790445626	Sum of GTIs [s]
ontime7	11544.35451597	Sum of GTIs [s]
ontime8	11544.190355957	Sum of GTIs [s]
l2events	77358	Number of level 2 events



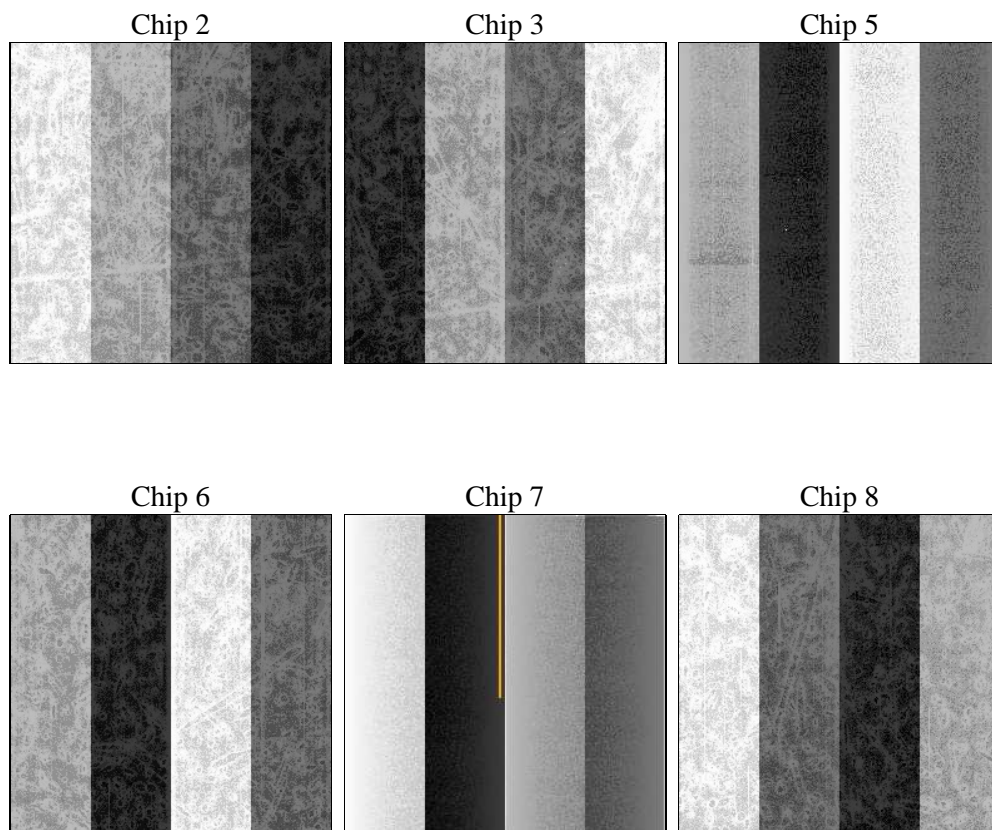
2 OBI

2.1 OBI

2.1.1 Images



2.1.2 Bias



2.1.3 Parameters

obi_num	0	Obi number	sched_exp_time	11500.000000	[s] Scheduled observation exposure time
ascdsver	8.4.3.1	Processing system revision	ontime	11544.35451597	Sum of GTIs [s]
caldbver	4.4.9	 	ontime2	11541.154585719	Sum of GTIs [s]
date	2012-04-06T01:39:56	Date and time of file creation	ontime3	11537.749435484	Sum of GTIs [s]
revision	2	Processing version of data	ontime5	11544.313475966	Sum of GTIs [s]
			ontime6	11537.790445626	Sum of GTIs [s]
			ontime7	11544.35451597	Sum of GTIs [s]
			ontime8	11544.190355957	Sum of GTIs [s]
			l1events	426724	Number of level 1 events

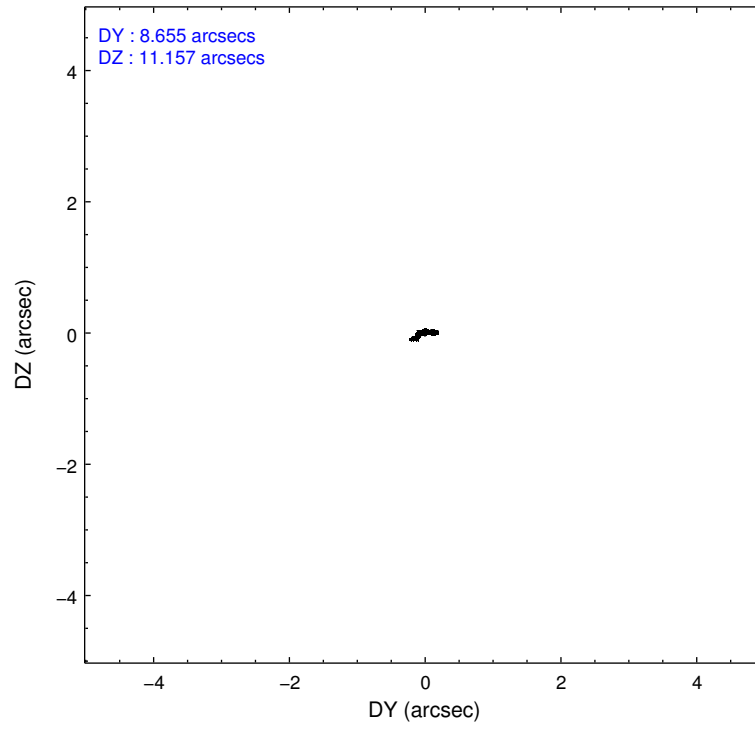
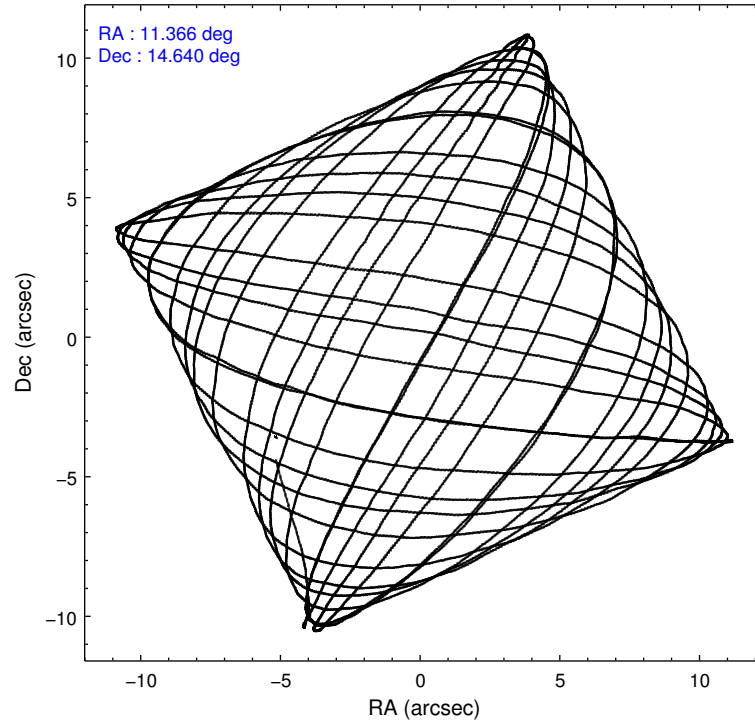
2.1.4 Events

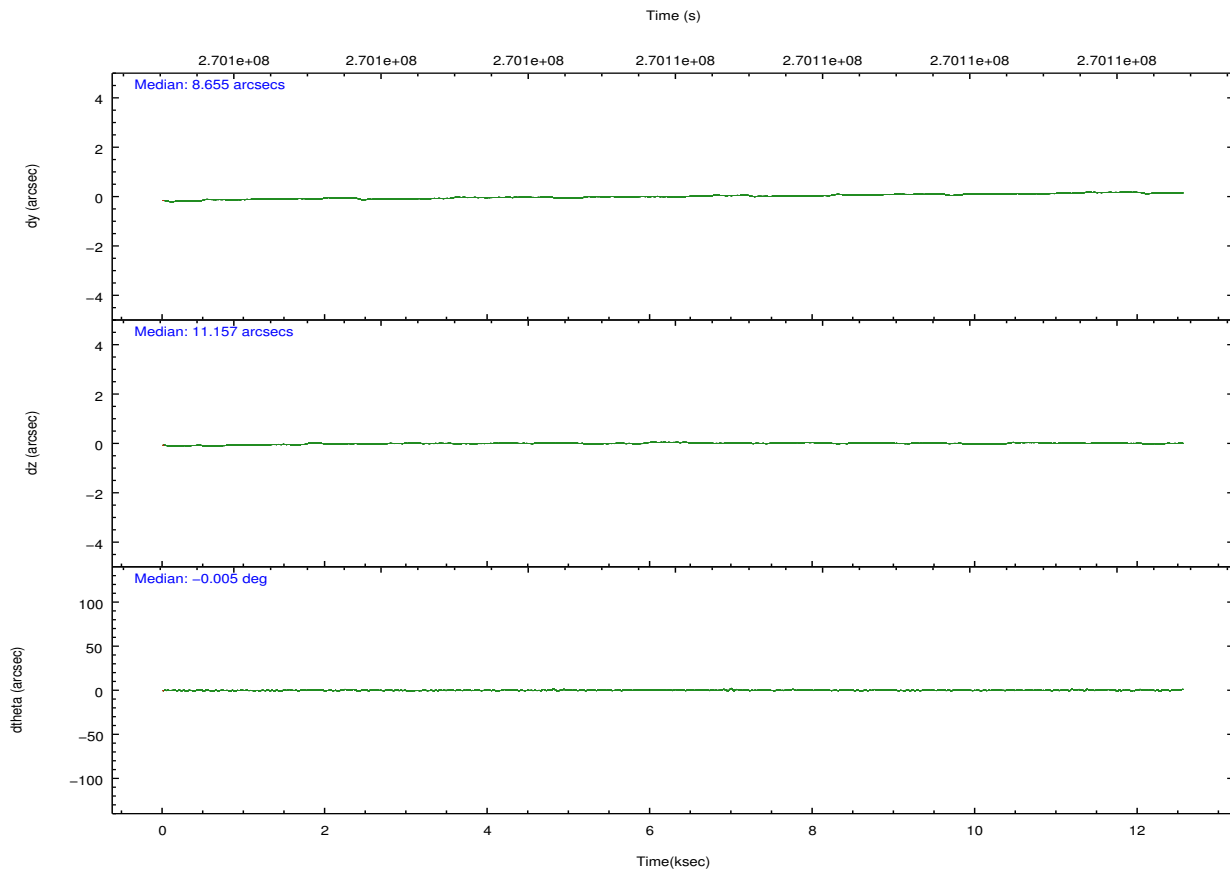
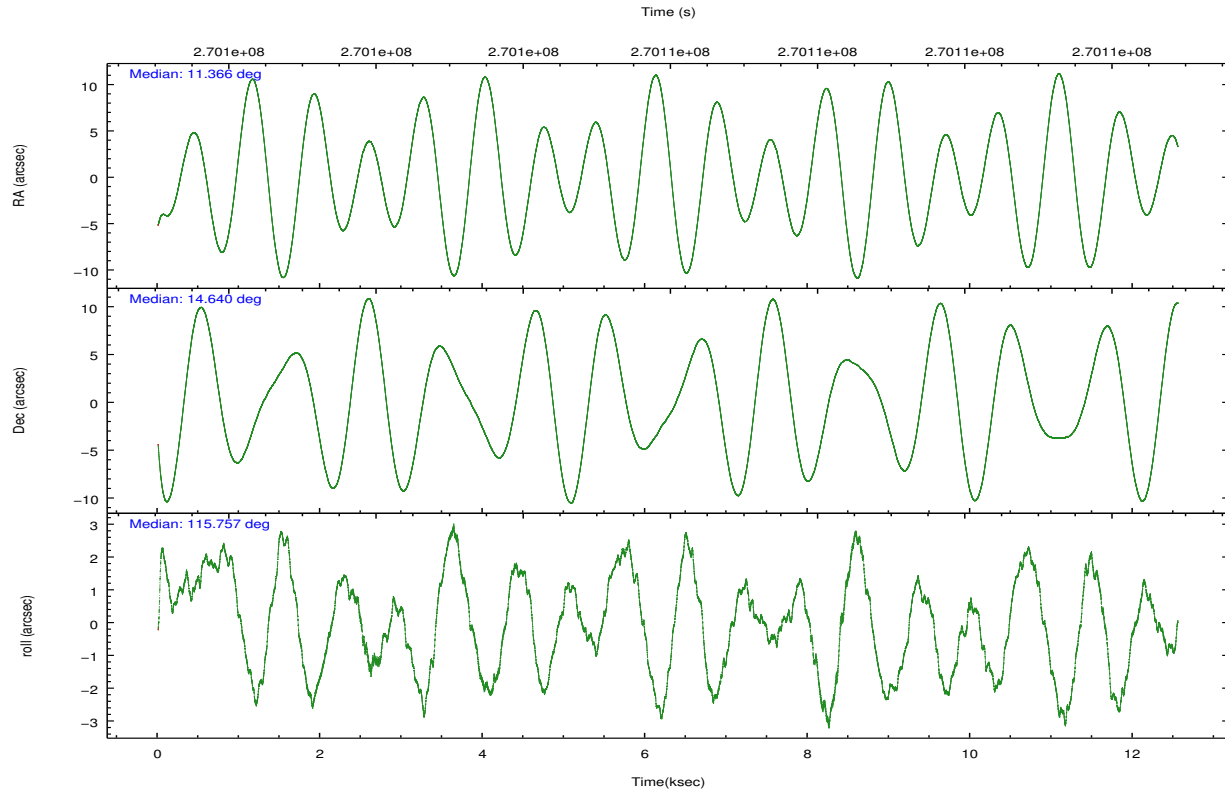
	ccd 2	ccd 3	ccd 5	ccd 6	ccd 7	ccd 8		ccd 2	ccd 3	ccd 5	ccd 6	ccd 7	ccd 8
level 1 events	84173	73346	60296	78786	40693	89430	grade 0 events	2411	2292	2740	2758	2829	6209
rejected events	78215	67679	25146	72159	17532	67554		2%	3%	4%	3%	6%	6%
rejected %	92%	92%	41%	91%	43%	75%	grade 1 events	41	32	102	34	87	58
								0%	0%	0%	0%	0%	0%
							grade 2 events	1378	1236	11551	1467	5456	4956
								1%	1%	19%	1%	13%	5%
							grade 3 events	646	677	1916	672	2358	2516
								0%	0%	3%	0%	5%	2%
							grade 4 events	731	605	1755	702	2353	2275
								0%	0%	2%	0%	5%	2%
							grade 5 events	1160	1382	4770	1370	4197	2392
								1%	1%	7%	1%	10%	2%
							grade 6 events	795	860	17200	1029	10174	5920
								0%	1%	28%	1%	25%	6%
							grade 7 events	77011	66262	20262	70754	13239	65104
								91%	90%	33%	89%	32%	72%

2.2 Compared Parameters

Parameter	Planned	Actual	Parameter	Planned	Actual
Instrument	ACIS	ACIS	Obspar format version number	7	7
Detector	ACIS-235678	ACIS-235678	Obspar file type	PREDICTED	ACTUAL
Grating	NONE	NONE	Obspar update status	NONE	UPDATED
Data mode	VFAINT	VFAINT	Number of optional ACIS chips dropped	0	0
Observation mode	POINTING	POINTING	On-chip summing requested	N	N
[deg] Pointing RA	11.389894	11.36640021673507	Subarray requested	NONE	NONE
[deg] Pointing Dec	14.624657	14.63966492374476	Alternating exposures requested	N	N
[deg] Pointing Roll	115.598827	115.7613871321749	[s] Primary exposure time	0.000000	3.2
[mm] SIM focus pos	-0.684267	-0.6828225247311905			
[mm] SIM defocus	0	0.001444936568705701			
[mm] SIM translation stage pos	-190.132523	-190.1400660498719			
[mm] SIM translation stage offset	0	0.00754346686406393			
[s] Observation start time (MET)	270100745.184000	270099251.67523			
Observation start date	2006-07-24T03:58:00	2006-07-24T03:34:11			
[s] Observation end time (MET)	270112245.184000	270112960.02587			
Observation end date	2006-07-24T07:09:40	2006-07-24T07:22:40			
Read mode	TIMED	TIMED			

2.3 Aspect



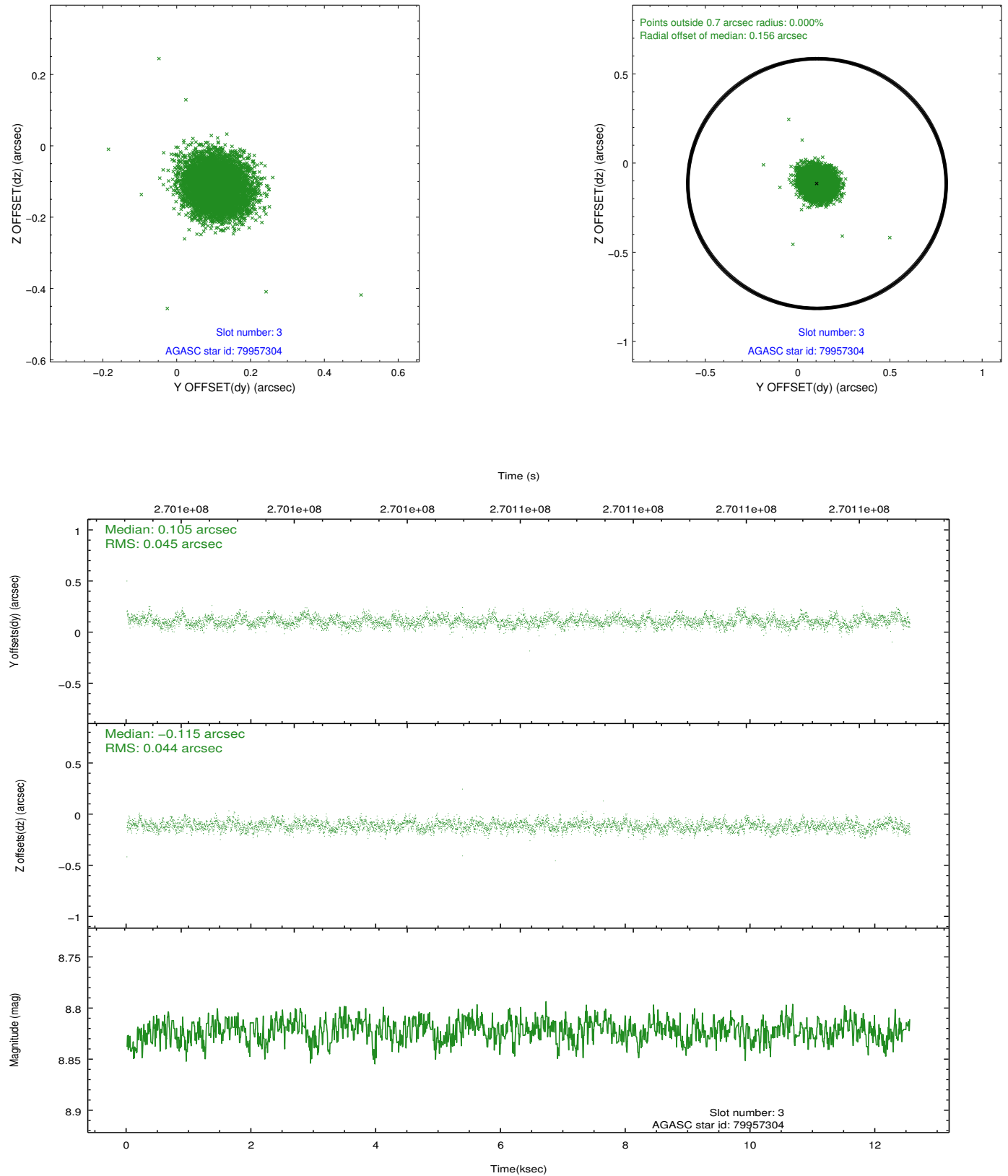


Slot Statistics

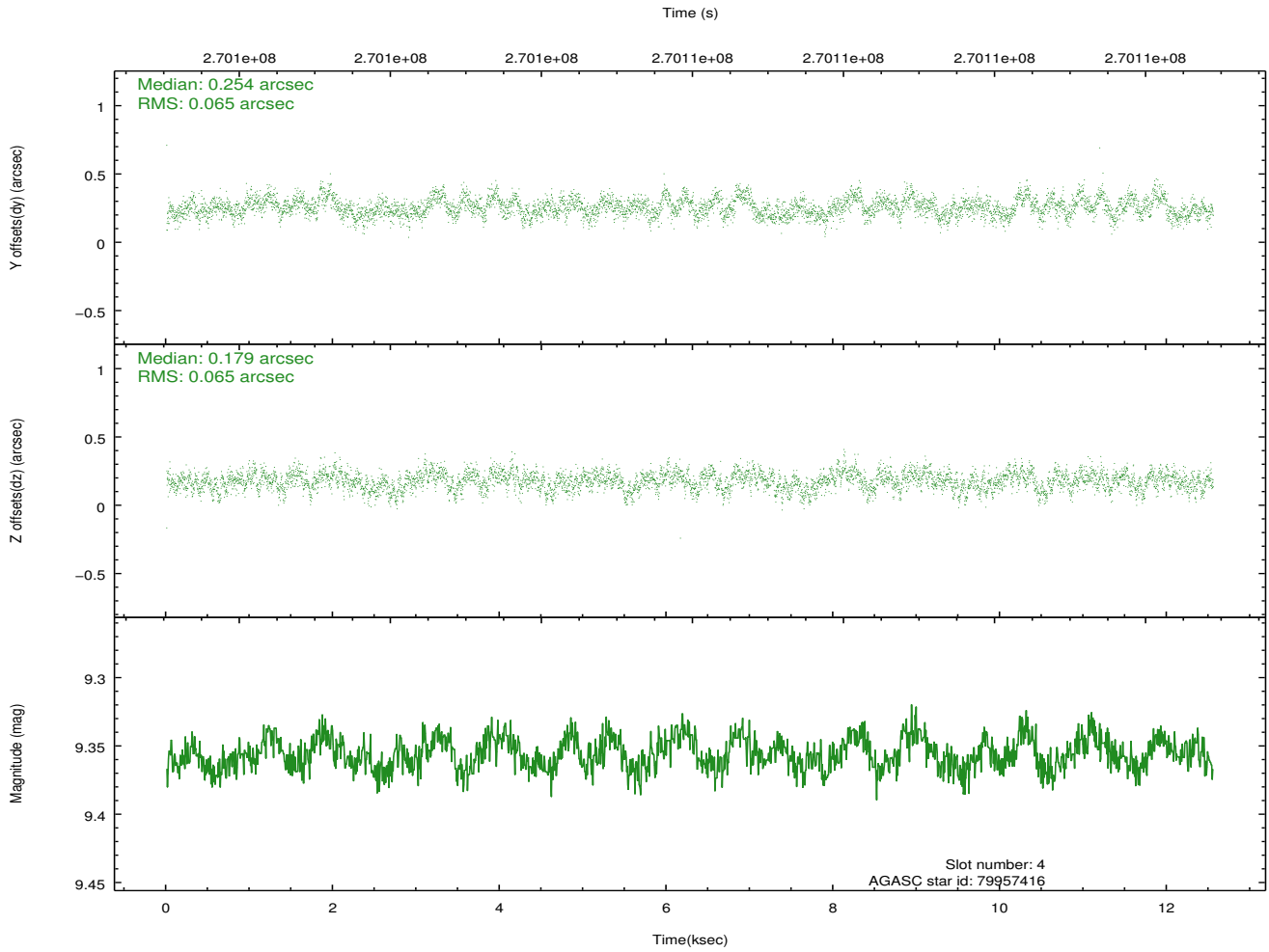
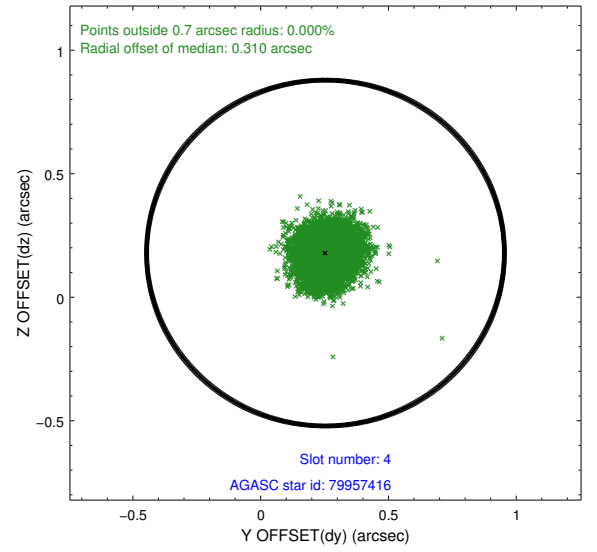
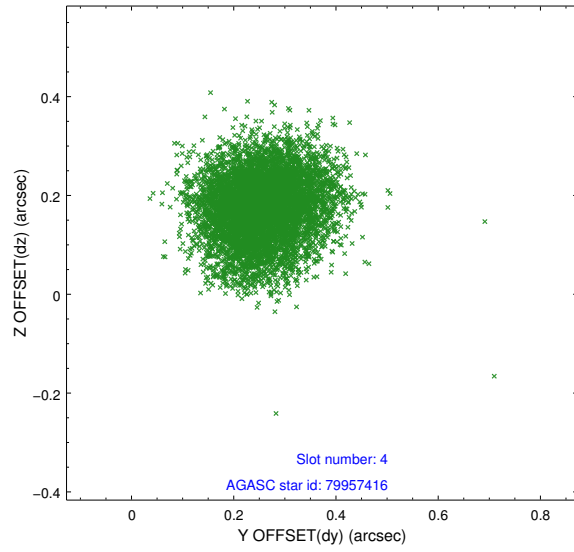
slot	status	id	mag	n_pts	med_dy	med_dz	dr1	dr2	ra	dec	mean_y	mean_z
0	FID	ACIS-S-2	7.11	3062	-0.034	-0.016	0.007	0.012	0.000000	0.000000	-761.46	-1732.45
1	FID	ACIS-S-4	7.21	3061	0.136	0.021	0.008	0.013	0.000000	0.000000	2151.77	175.71
2	FID	ACIS-S-5	7.23	3061	-0.133	0.004	0.008	0.013	0.000000	0.000000	-1813.93	169.74
3	GUIDE	79957304	8.82	6121	0.105	-0.115	0.067	0.107	11.198725	14.326356	-679.77	1065.05
4	GUIDE	79957416	9.36	6116	0.254	0.179	0.098	0.157	11.612216	14.315431	-1338.39	-218.34
5	GUIDE	79960152	8.77	6121	0.039	-0.058	0.082	0.127	11.654297	14.463803	-919.80	-581.42
6	GUIDE	155723504	8.34	6121	-0.288	-0.121	0.059	0.095	10.851088	15.095812	2340.67	955.78
7	GUIDE	155724600	8.89	6113	-0.113	0.117	0.091	0.149	11.325767	15.165768	1853.72	-640.19

2.4 Star Slots

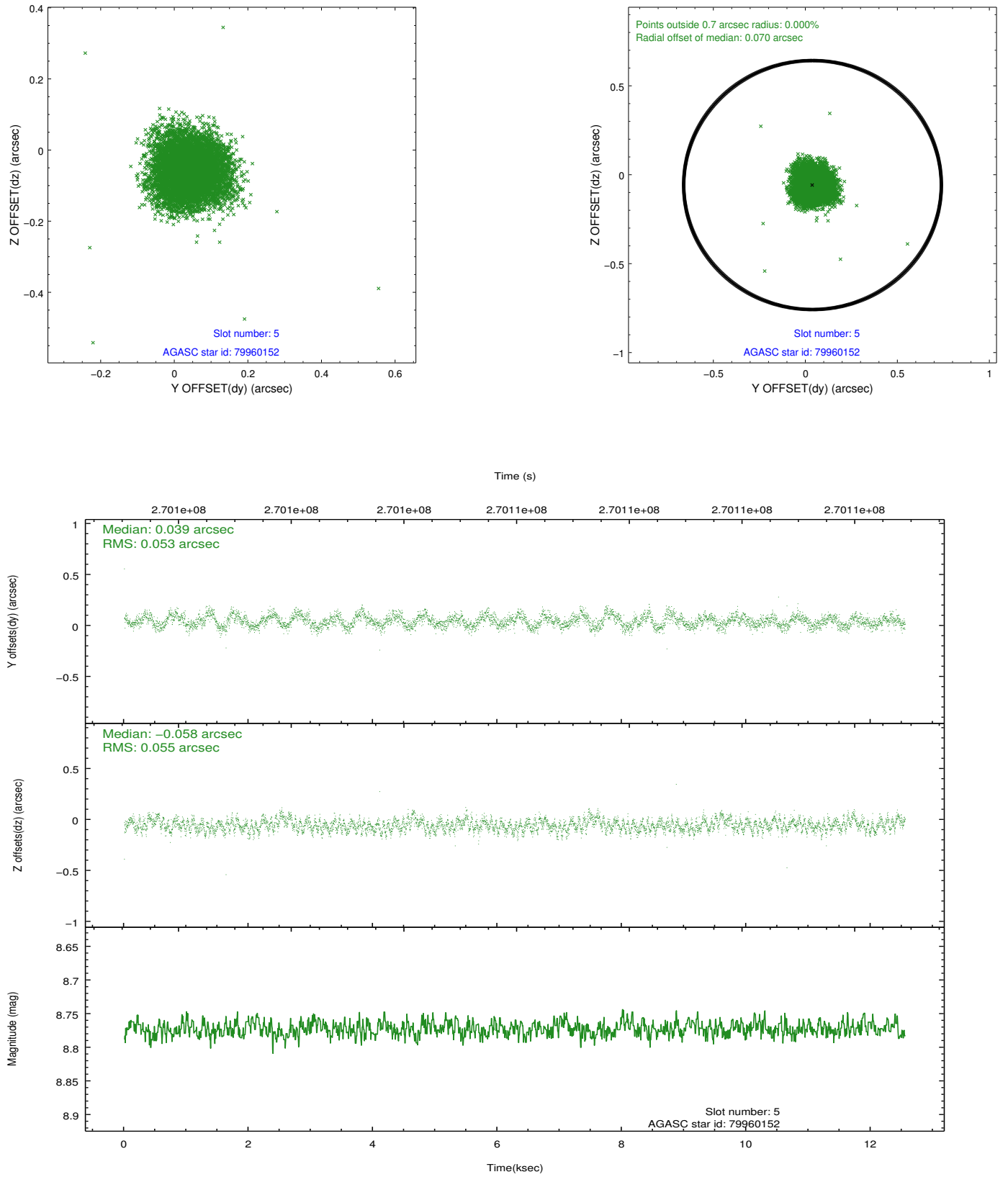
2.4.1 Slot 3



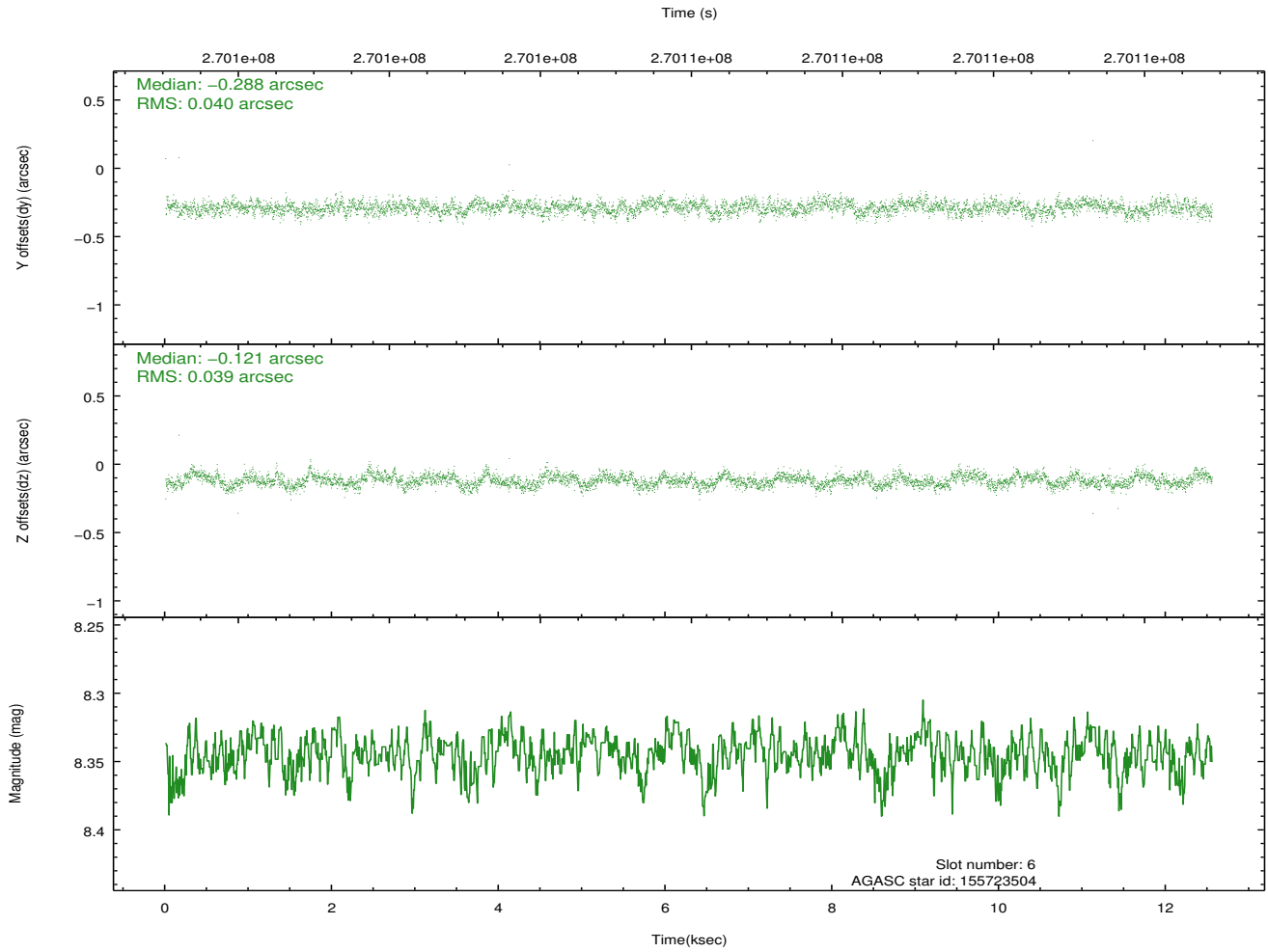
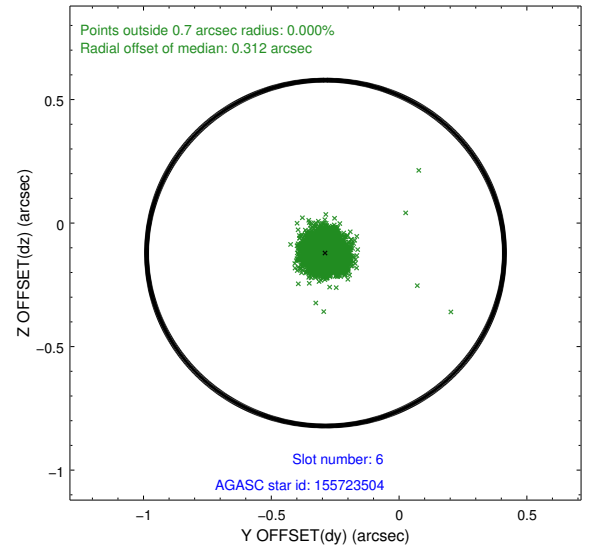
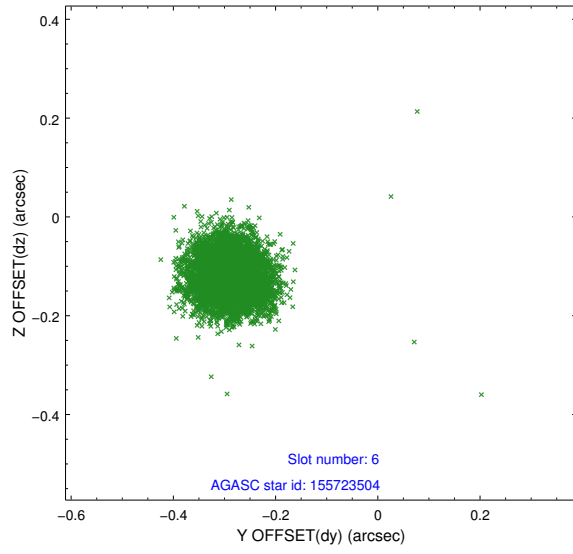
2.4.2 Slot 4



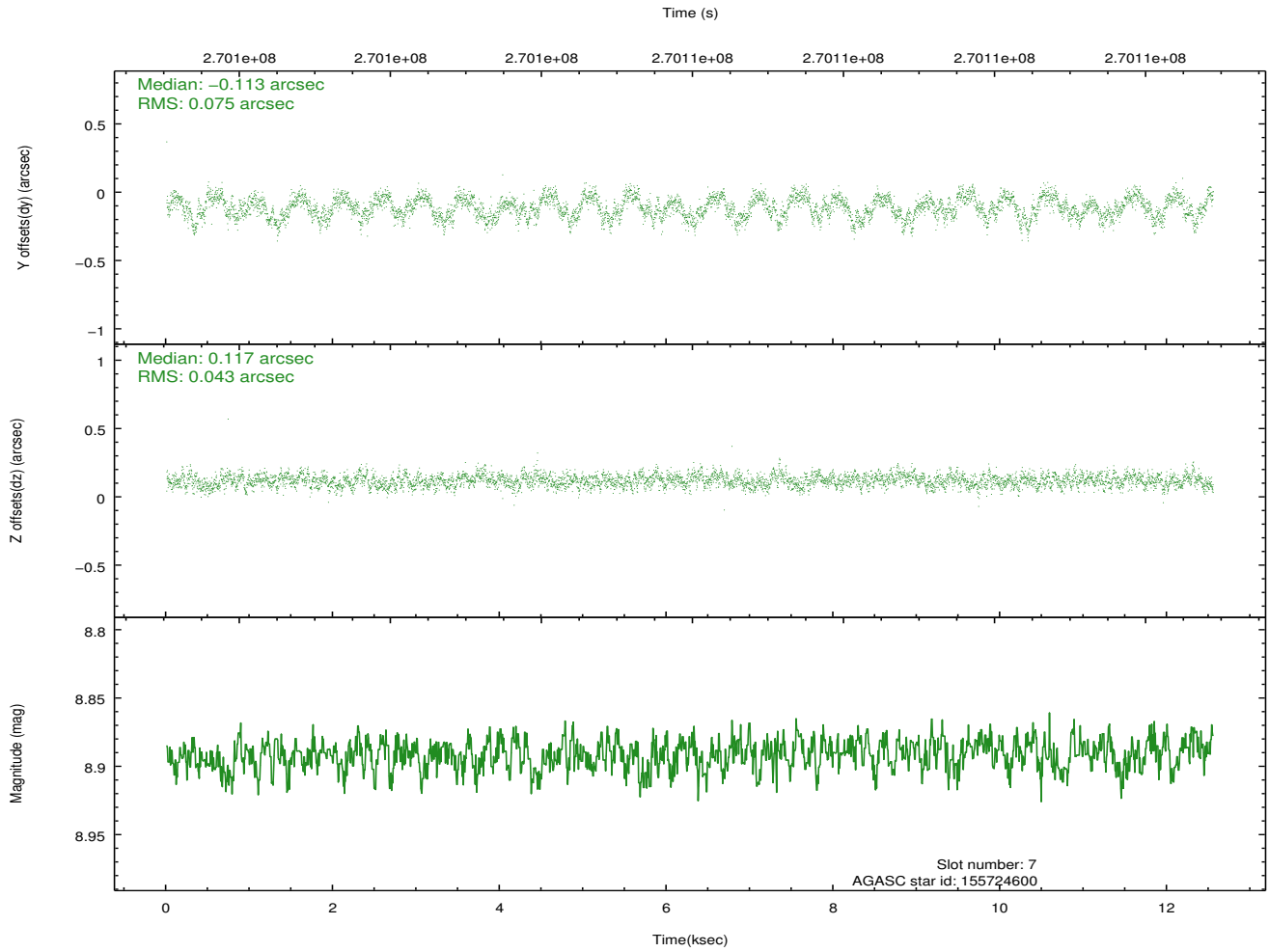
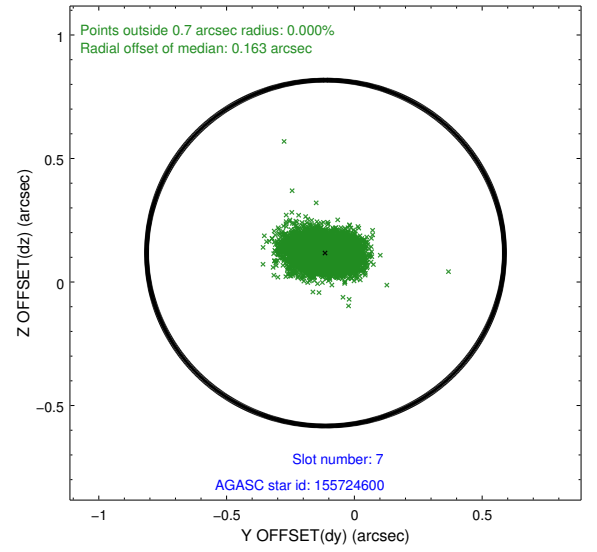
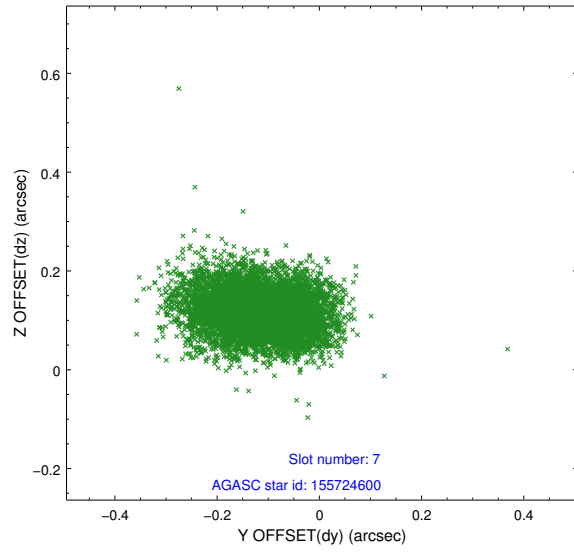
2.4.3 Slot 5



2.4.4 Slot 6

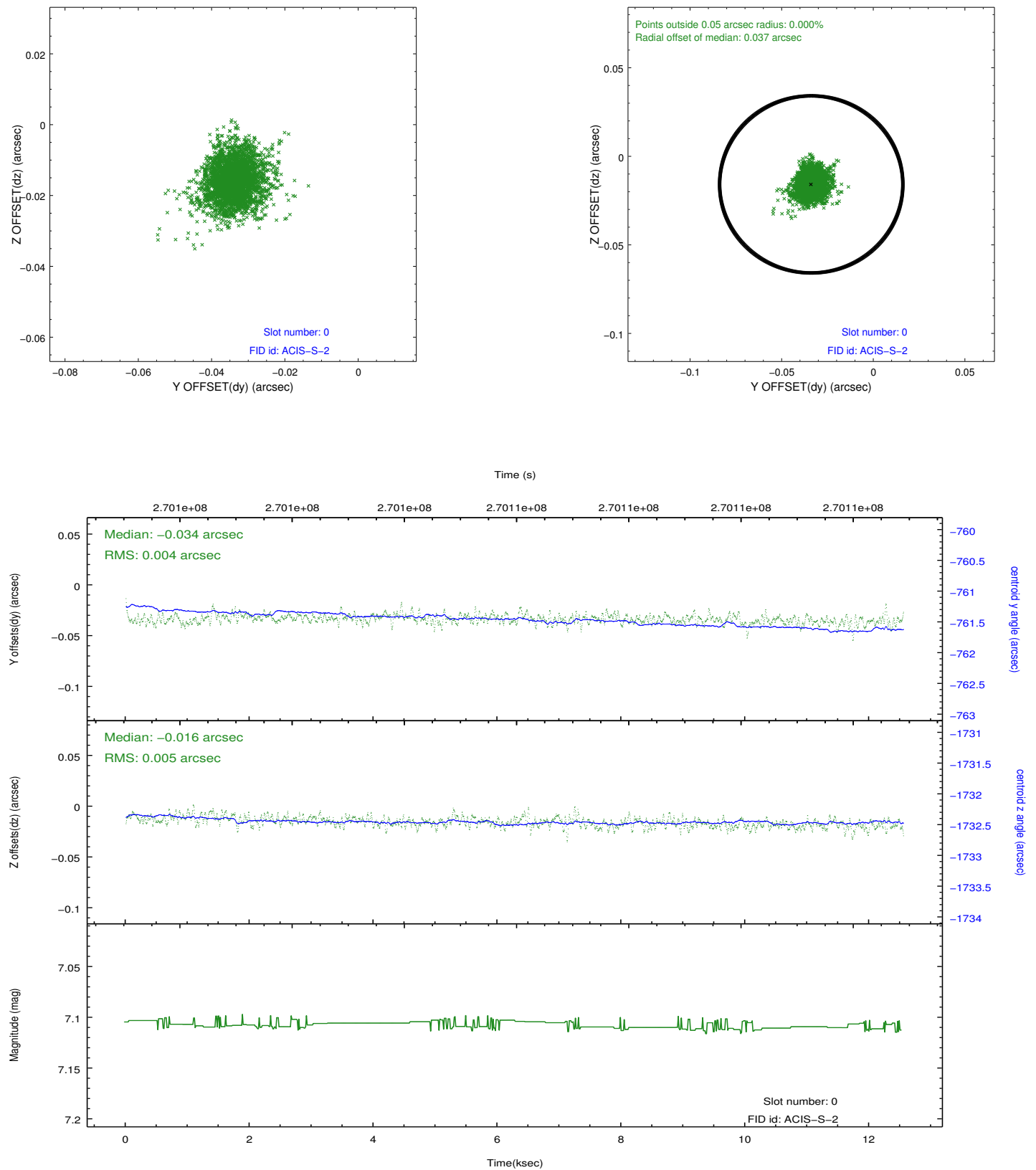


2.4.5 Slot 7

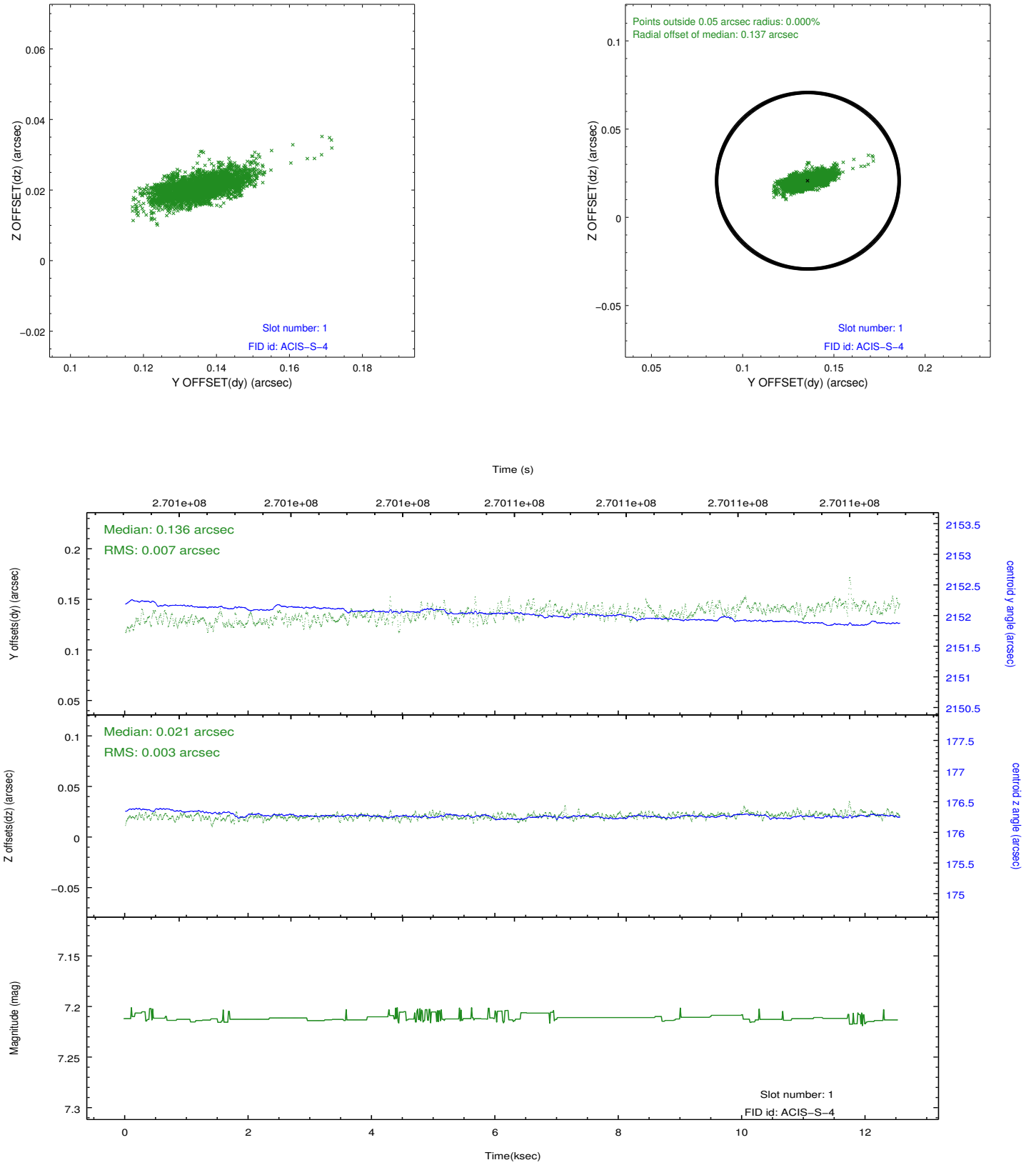


2.5 FID Slots

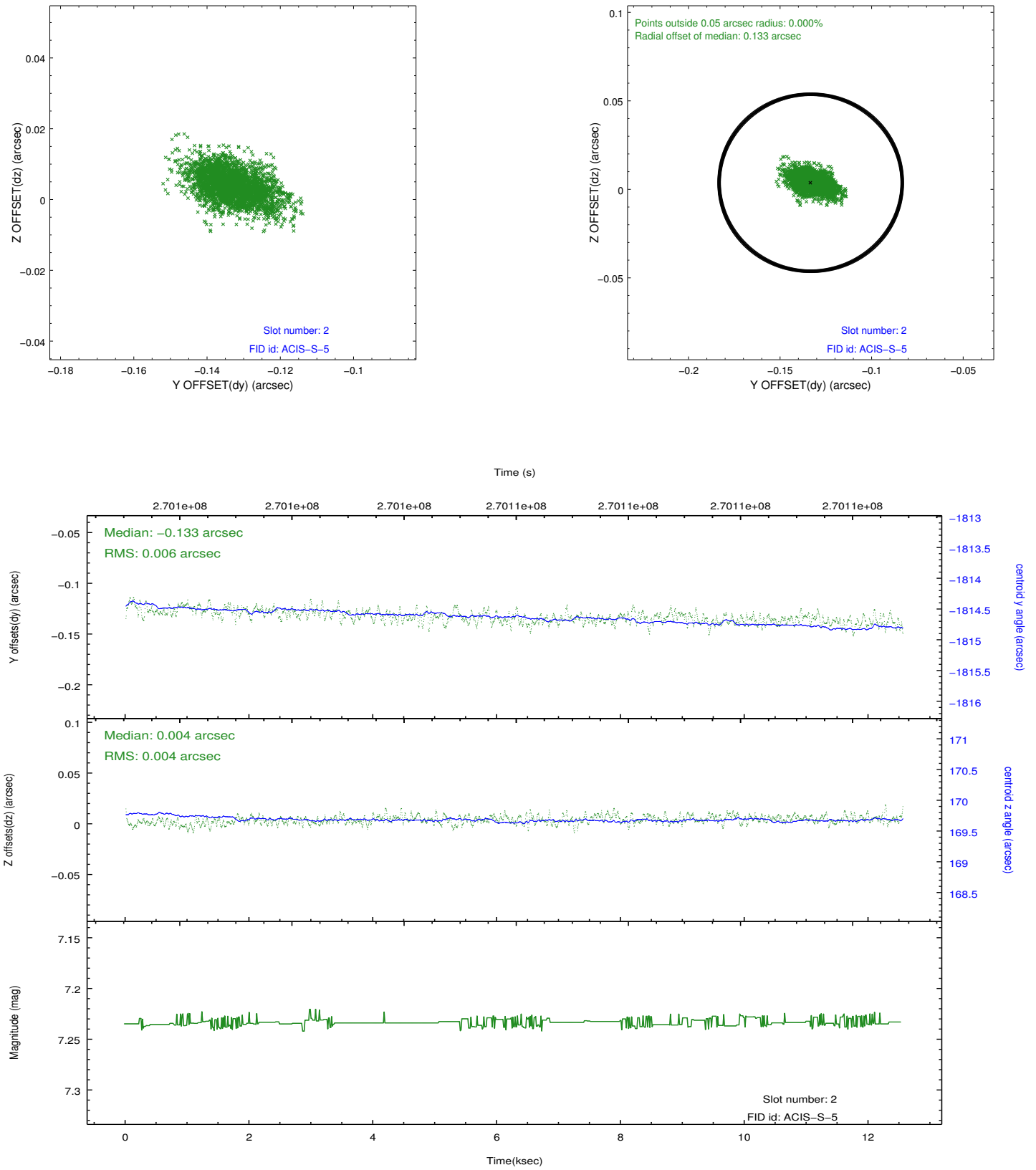
2.5.1 Slot 0



2.5.2 Slot 1



2.5.3 Slot 2



A Summary

A.1 Status

V&V Scientist	Jen Lauer
V&V Date (YYYY-MM-DD)	2012.04.06
V&V Edition	1
V&V Disposition and Status	OK
V&V Charge Time	11.5455999

A.2 Comments