

# V&V Reference Report

## L2 ASCDS Version : 8.4.3

Observation 6886 - L2 Version 2  
Chandra X-Ray Center

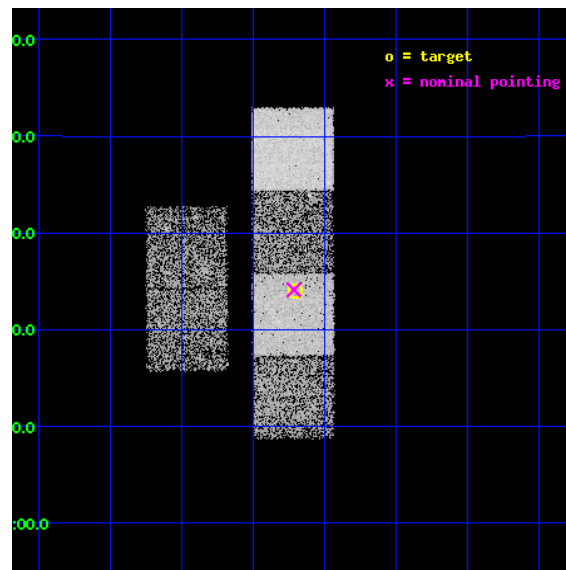
L2 Processing Date : Mar 28 2012

## Contents

<b>1</b>	<b>Front</b>	<b>2</b>
<b>2</b>	<b>OBI</b>	<b>3</b>
2.1	OBI . . . . .	3
2.1.1	Images . . . . .	3
2.1.2	Bias . . . . .	3
2.1.3	Parameters . . . . .	4
2.1.4	Events . . . . .	4
2.2	Compared Parameters . . . . .	5
2.3	Aspect . . . . .	6
2.4	Star Slots . . . . .	9
2.4.1	Slot 3 . . . . .	9
2.4.2	Slot 4 . . . . .	10
2.4.3	Slot 5 . . . . .	11
2.4.4	Slot 6 . . . . .	12
2.4.5	Slot 7 . . . . .	13
2.5	FID Slots . . . . .	14
2.5.1	Slot 0 . . . . .	14
2.5.2	Slot 1 . . . . .	15
2.5.3	Slot 2 . . . . .	16
<b>A</b>	<b>Summary</b>	<b>17</b>
A.1	Status . . . . .	17
A.2	Comments . . . . .	17

# 1 Front

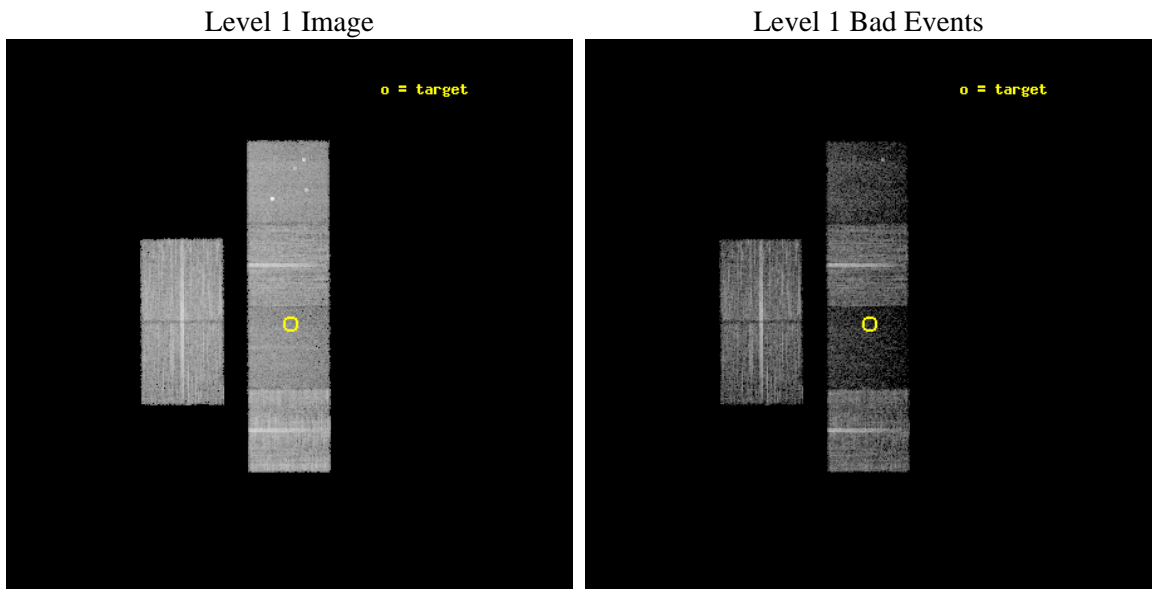
seq_num	701303	Sequence number
obs_id	6886	Observation id
title	A Uniform Chandra Survey of the Brightest and Most Extreme SDSS BALQSOs	Proposal title
observer	Dr. Scott Anderson	Principal investigator
object	SDSS J144842.45+042403.1	Source name
dtcycle	0	&#160
cycle	P	events from which exps? Prim/Second/Both
ra_targ	222.177083	Observer's specified target RA [deg]
dec_targ	4.400861	Observer's specified target Dec [deg]
ra_nom	222.17873135607	Nominal RA [deg]
dec_nom	4.4021419704898	Nominal Dec [deg]
roll_nom	89.700933175439	Nominal Roll [deg]
revision	2	Processing version of data
ontime	9045.4996124804	Sum of GTIs [s]
livetime	8930.9600498412	Livetime [s]
ontime2	9045.5406524837	Sum of GTIs [s]
ontime3	9045.3764924705	Sum of GTIs [s]
ontime5	9045.4585724771	Sum of GTIs [s]
ontime6	9042.1765522063	Sum of GTIs [s]
ontime7	9045.4996124804	Sum of GTIs [s]
ontime8	9045.335452497	Sum of GTIs [s]
l2events	62020	Number of level 2 events



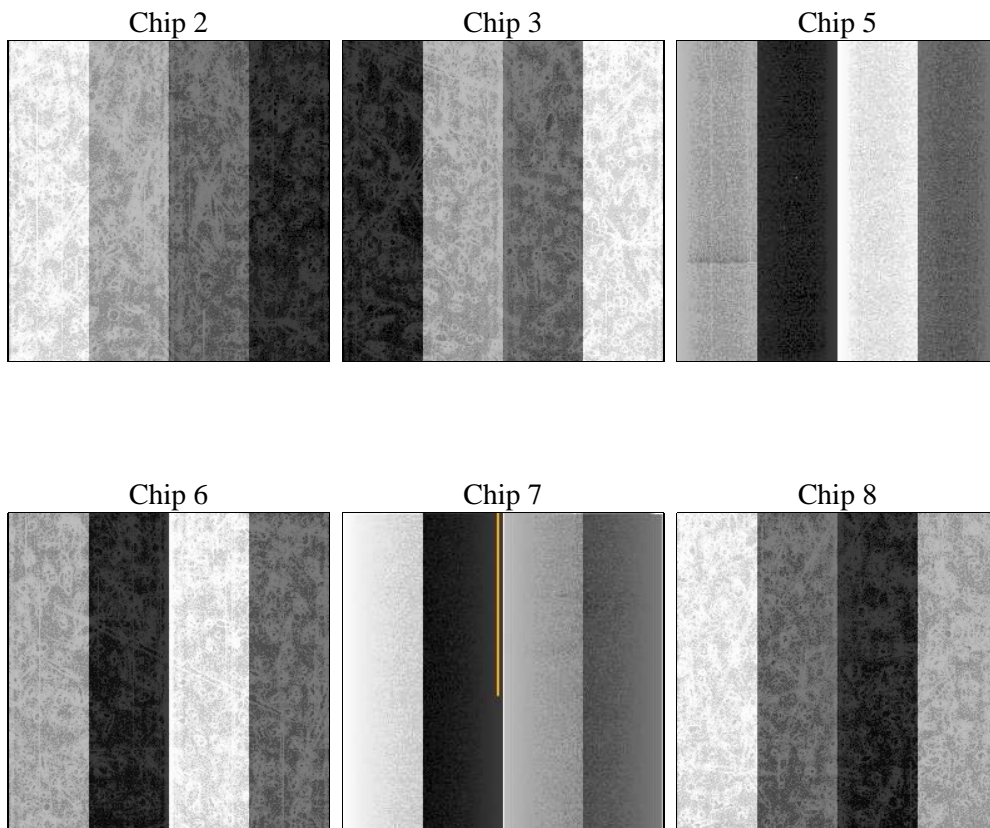
## 2 OBI

### 2.1 OBI

#### 2.1.1 Images



#### 2.1.2 Bias



### 2.1.3 Parameters

obi_num	0	Obi number	sched_exp_time	9000.000000	[s] Scheduled observation exposure time
ascdsver	8.4.3.1	Processing system revision	ontime	9045.4996124804	Sum of GTIs [s]
caldbver	4.4.8	&#160	ontime2	9045.5406524837	Sum of GTIs [s]
date	2012-03-28T03:04:44	Date and time of file creation	ontime3	9045.3764924705	Sum of GTIs [s]
revision	2	Processing version of data	ontime5	9045.4585724771	Sum of GTIs [s]
			ontime6	9042.1765522063	Sum of GTIs [s]
			ontime7	9045.4996124804	Sum of GTIs [s]
			ontime8	9045.335452497	Sum of GTIs [s]
			l1events	318653	Number of level 1 events

### 2.1.4 Events

	ccd 2	ccd 3	ccd 5	ccd 6	ccd 7	ccd 8
level 1 events	63525	52210	48516	55880	31868	66654
rejected events	58365	47653	18590	50530	13017	49423
rejected %	91%	91%	38%	90%	40%	74%

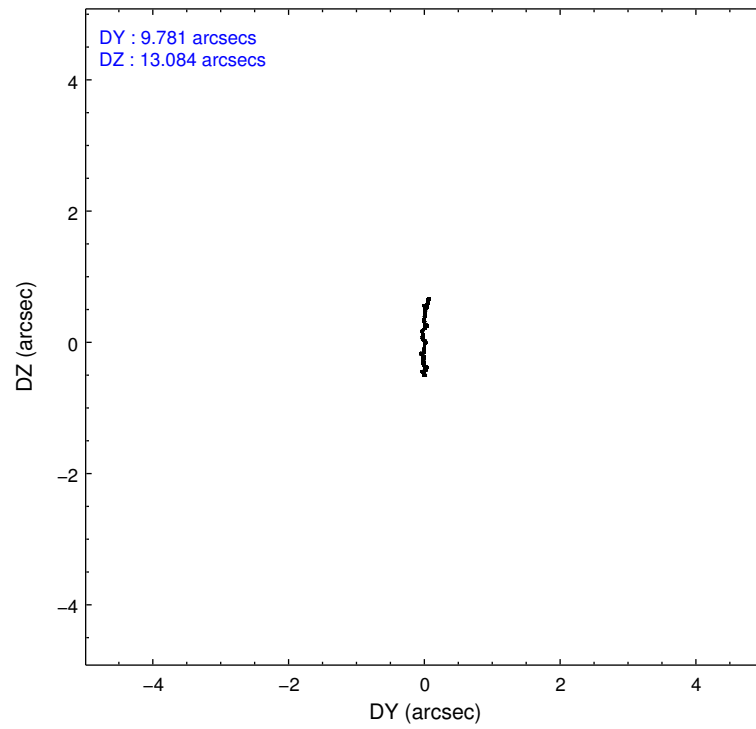
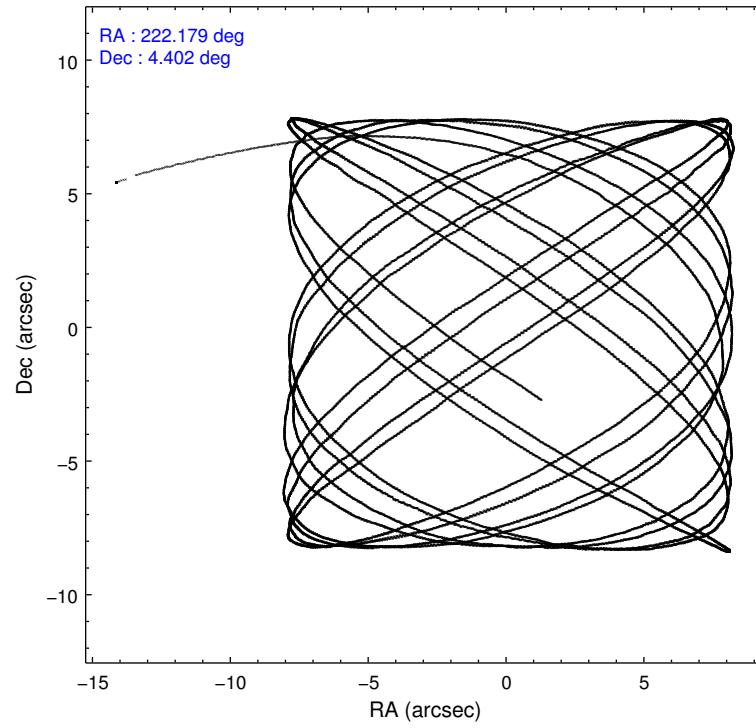
	ccd 2	ccd 3	ccd 5	ccd 6	ccd 7	ccd 8
grade 0 events	2209	1955	4894	2294	2513	4971
	3%	3%	10%	4%	7%	7%
grade 1 events	34	24	105	28	68	55
	0%	0%	0%	0%	0%	0%
grade 2 events	1184	942	9280	1103	4507	3952
	1%	1%	19%	1%	14%	5%
grade 3 events	484	484	1581	560	2045	1914
	0%	0%	3%	1%	6%	2%
grade 4 events	562	491	1540	563	1908	1817
	0%	0%	3%	1%	5%	2%
grade 5 events	833	1041	4018	1046	3327	1837
	1%	1%	8%	1%	10%	2%
grade 6 events	723	685	12641	831	7884	4580
	1%	1%	26%	1%	24%	6%
grade 7 events	57496	46588	14457	49455	9616	47528
	90%	89%	29%	88%	30%	71%

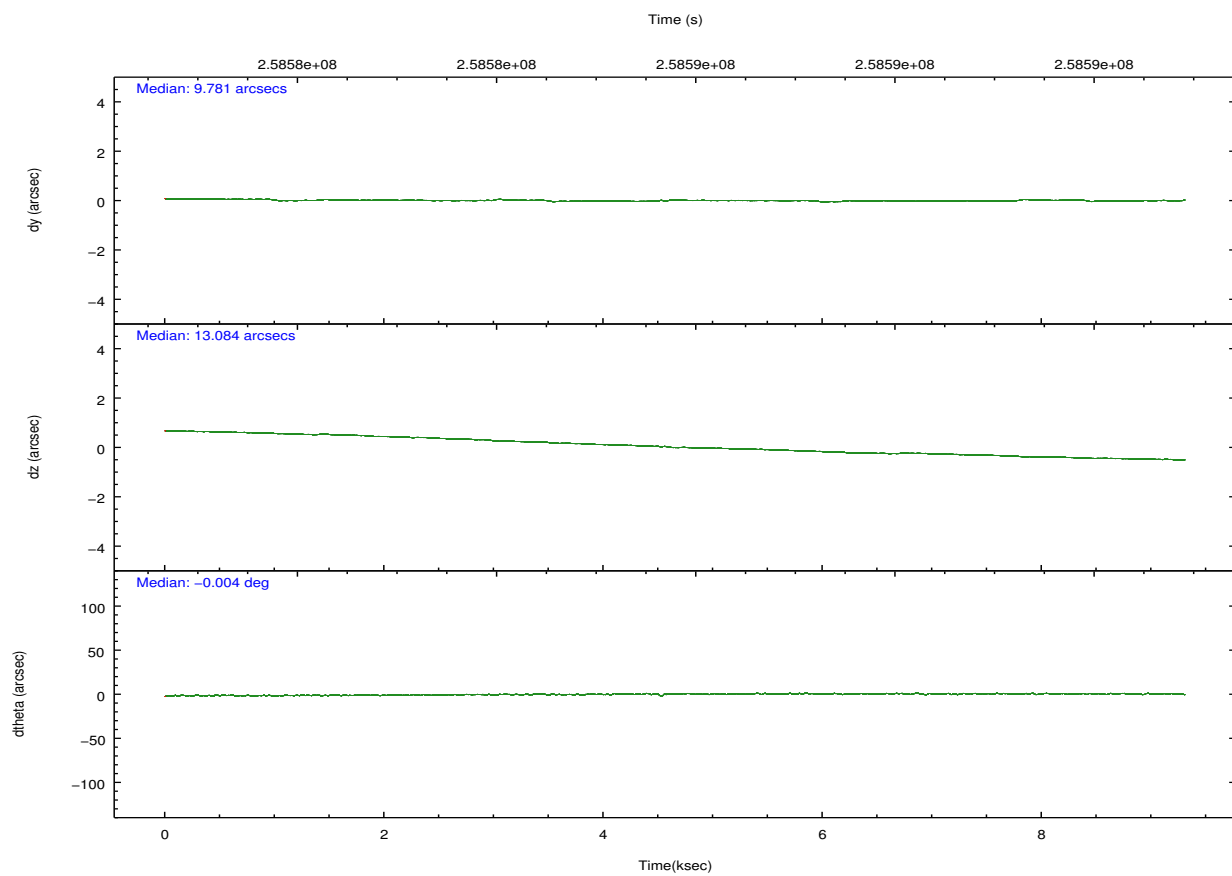
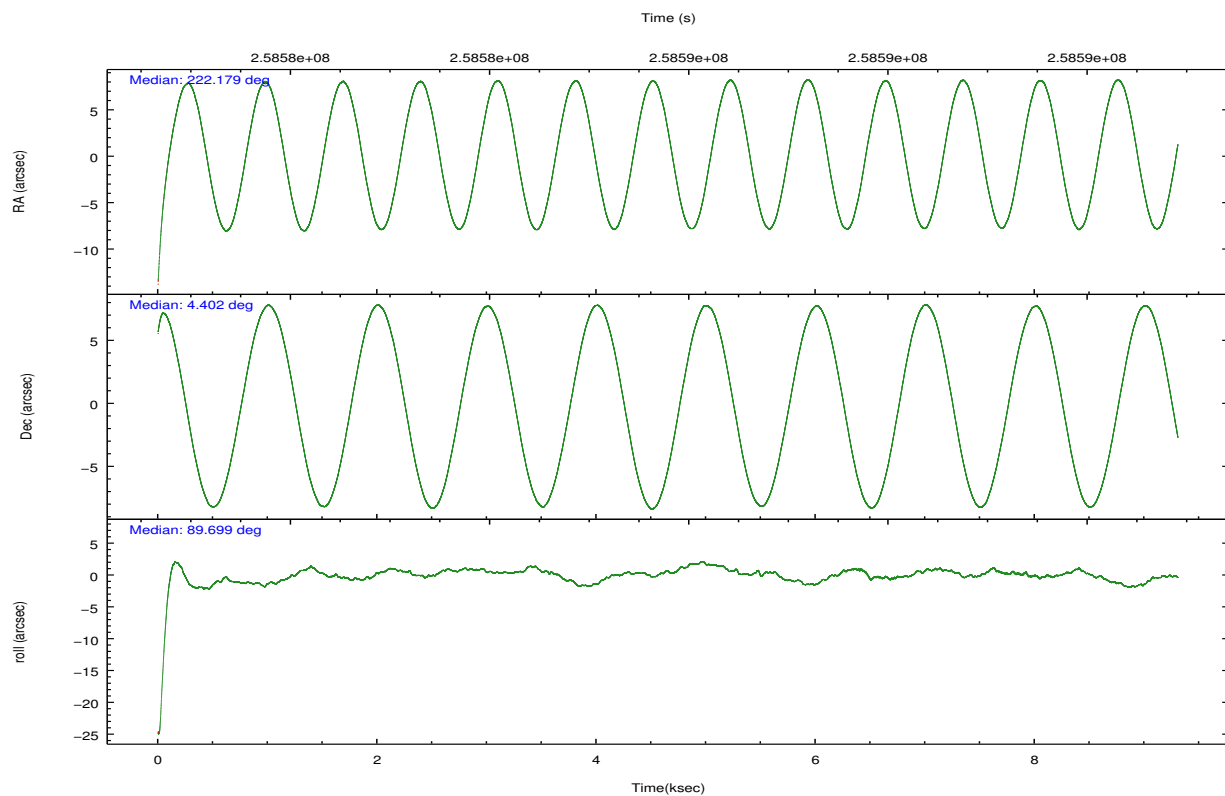


## 2.2 Compared Parameters

Parameter	Planned	Actual	Parameter	Planned	Actual
Instrument	ACIS	ACIS	Obspar format version number	7	7
Detector	ACIS-235678	ACIS-235678	Obspar file type	PREDICTED	ACTUAL
Grating	NONE	NONE	Obspar update status	NONE	UPDATED
Data mode	VFAINT	VFAINT	Number of optional ACIS chips dropped	0	0
Observation mode	POINTING	POINTING	On-chip summing requested	N	N
[deg] Pointing RA	222.192618	222.1787313560703	Subarray requested	NONE	NONE
[deg] Pointing Dec	4.378622	4.402141970489756	Alternating exposures requested	N	N
[deg] Pointing Roll	89.543281	89.70093317543919	[s] Primary exposure time	0.000000	3.2
[mm] SIM focus pos	-0.684267	-0.6828225247311905			
[mm] SIM defocus	0	0.001444936568705701			
[mm] SIM translation stage pos	-190.132523	-190.1400660498719			
[mm] SIM translation stage offset	0	0.00754346686406393			
[s] Observation start time (MET)	258581448.184000	258580210.42496			
Observation start date	2006-03-12T20:09:43	2006-03-12T19:50:10			
[s] Observation end time (MET)	258590448.184000	258590947.30046			
Observation end date	2006-03-12T22:39:43	2006-03-12T22:49:07			
Read mode	TIMED	TIMED			

## 2.3 Aspect



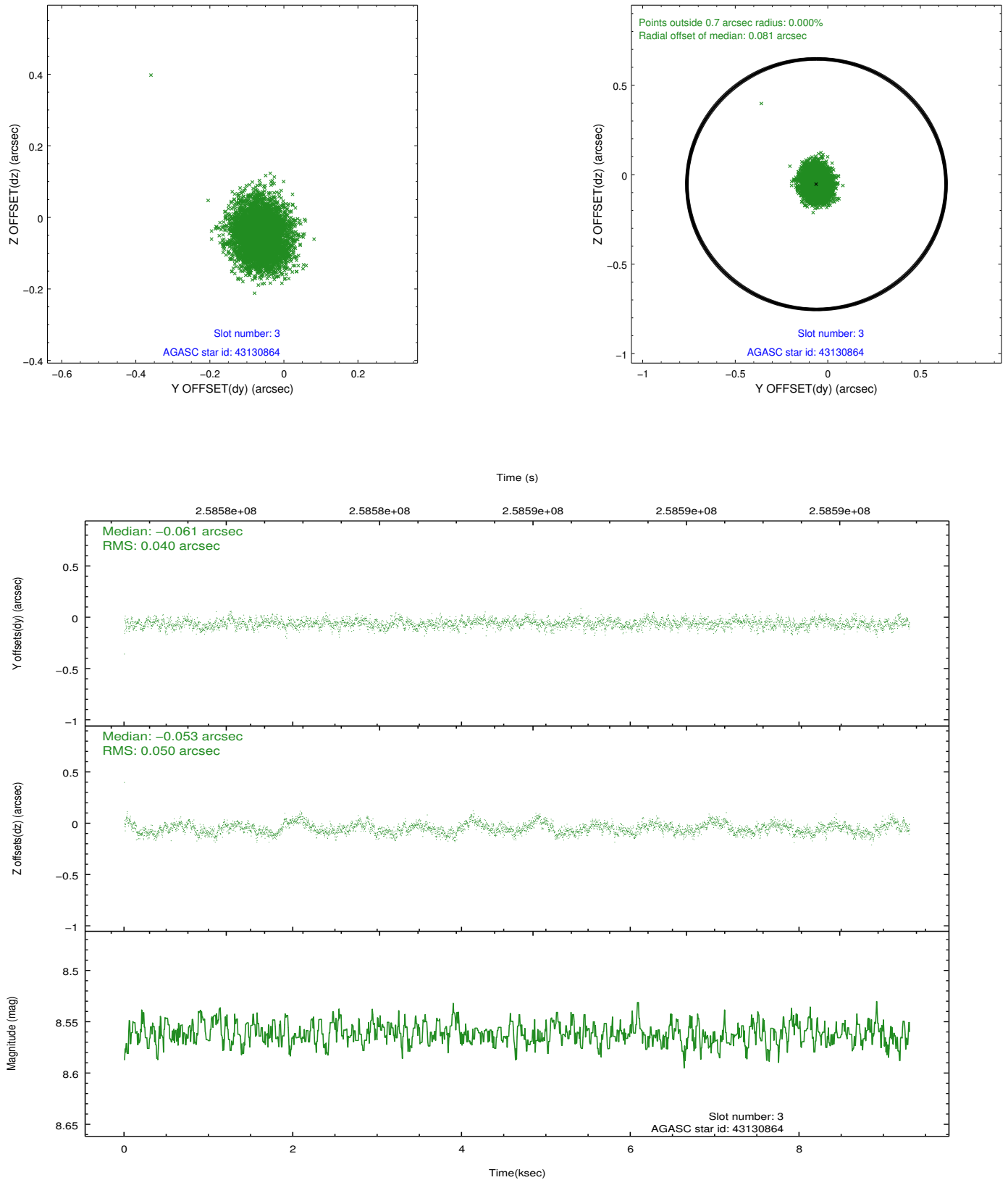


### Slot Statistics

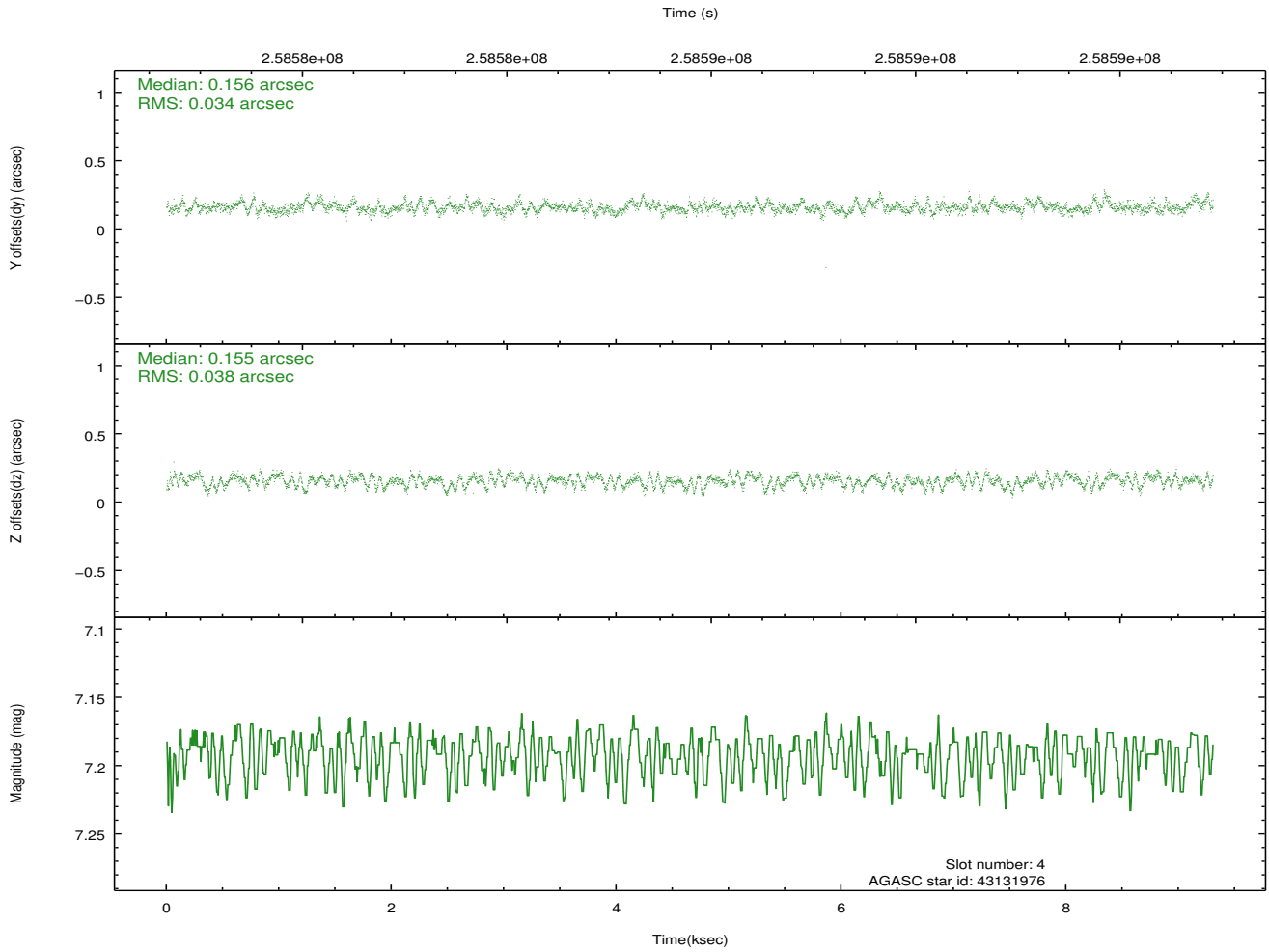
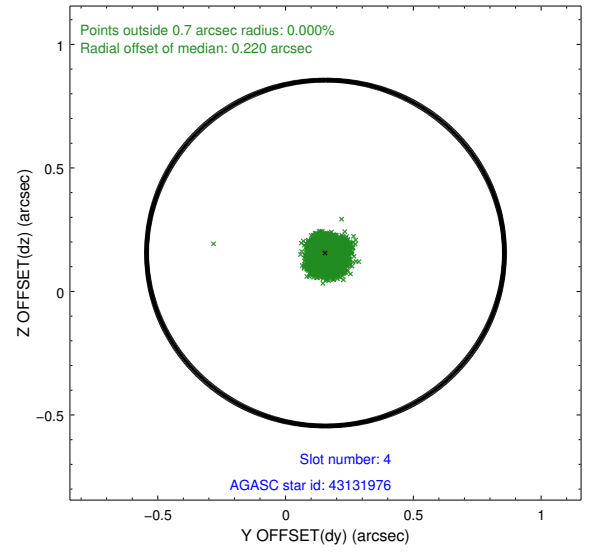
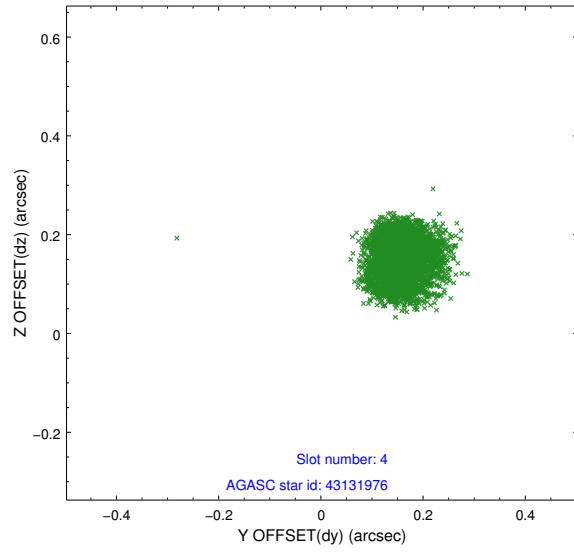
slot	status	id	mag	n_pts	med_dy	med_dz	dr1	dr2	ra	dec	mean_y	mean_z
0	FID	ACIS-S-1	7.19	2271	0.037	-0.035	0.018	0.031	0.000000	0.000000	933.41	-1730.15
1	FID	ACIS-S-4	7.20	2271	0.119	0.010	0.013	0.019	0.000000	0.000000	2151.27	173.42
2	FID	ACIS-S-5	7.23	2270	-0.182	0.037	0.011	0.017	0.000000	0.000000	-1814.89	167.79
3	GUIDE	43130864	8.56	4540	-0.061	-0.053	0.068	0.109	221.687030	4.949866	2042.65	1830.10
4	GUIDE	43131976	7.19	4539	0.156	0.155	0.055	0.086	222.434495	3.870744	-1820.84	-882.65
5	GUIDE	43133224	8.96	4538	-0.079	-0.018	0.077	0.127	222.026987	4.950284	2052.90	610.41
6	GUIDE	43134312	8.61	4539	0.306	0.159	0.070	0.113	222.468906	3.925406	-1622.82	-1005.31
7	GUIDE	43134048	6.89	4540	-0.323	-0.243	0.049	0.079	221.765269	4.885467	1812.12	1546.98

## 2.4 Star Slots

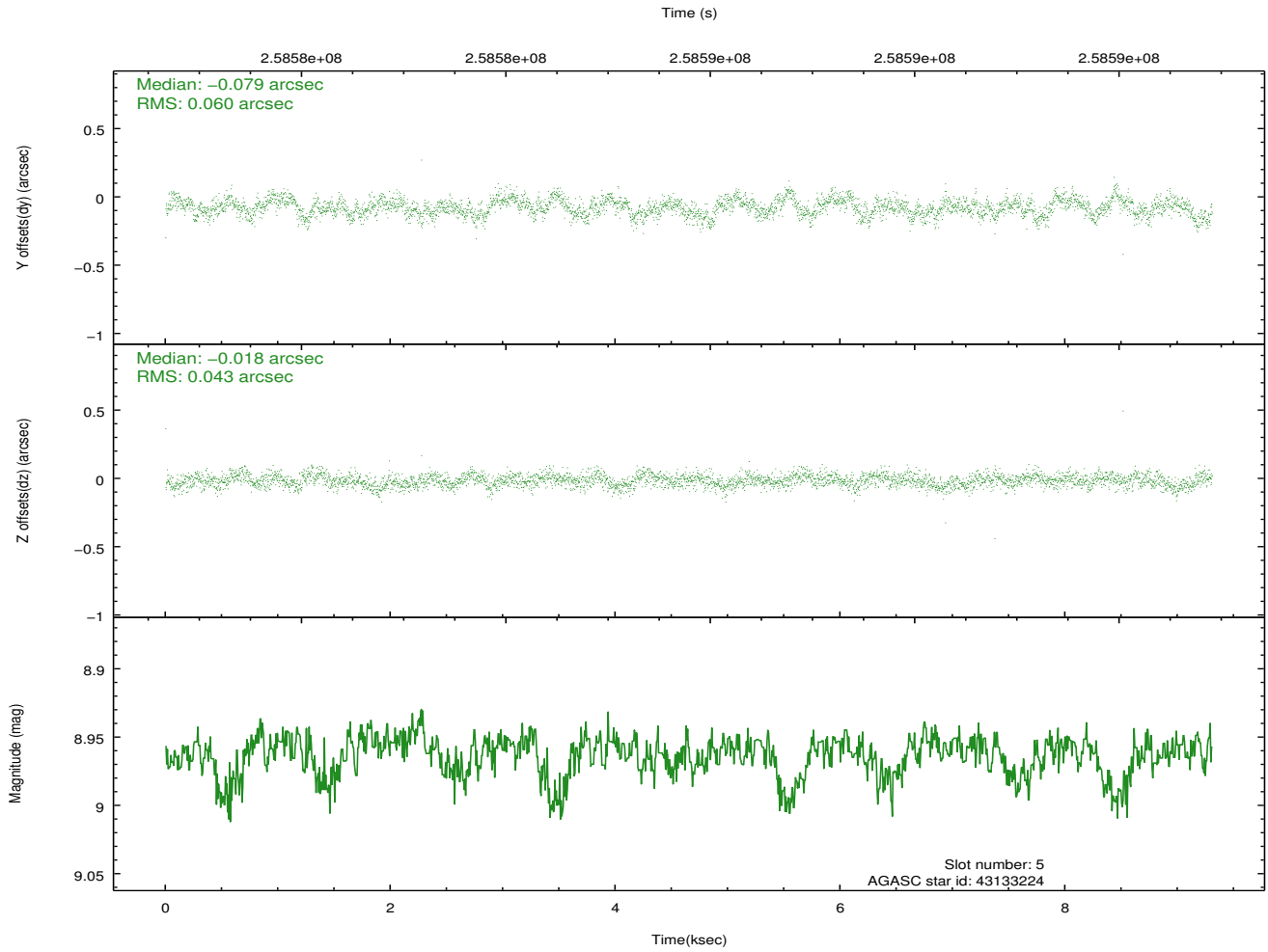
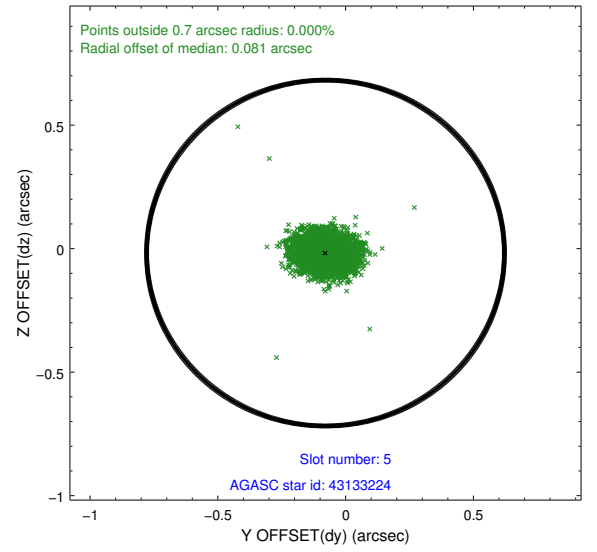
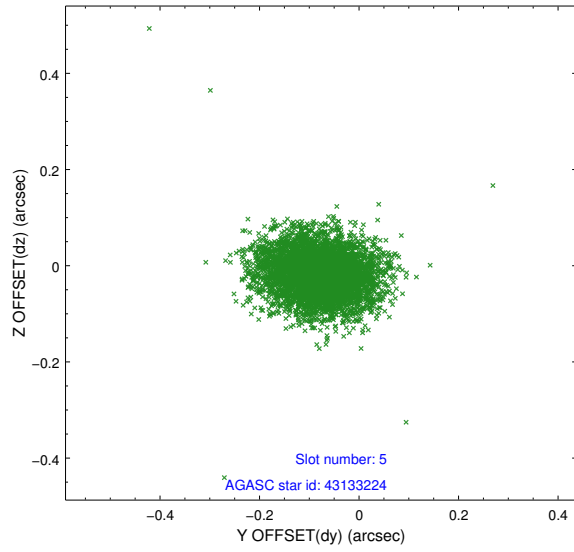
### 2.4.1 Slot 3



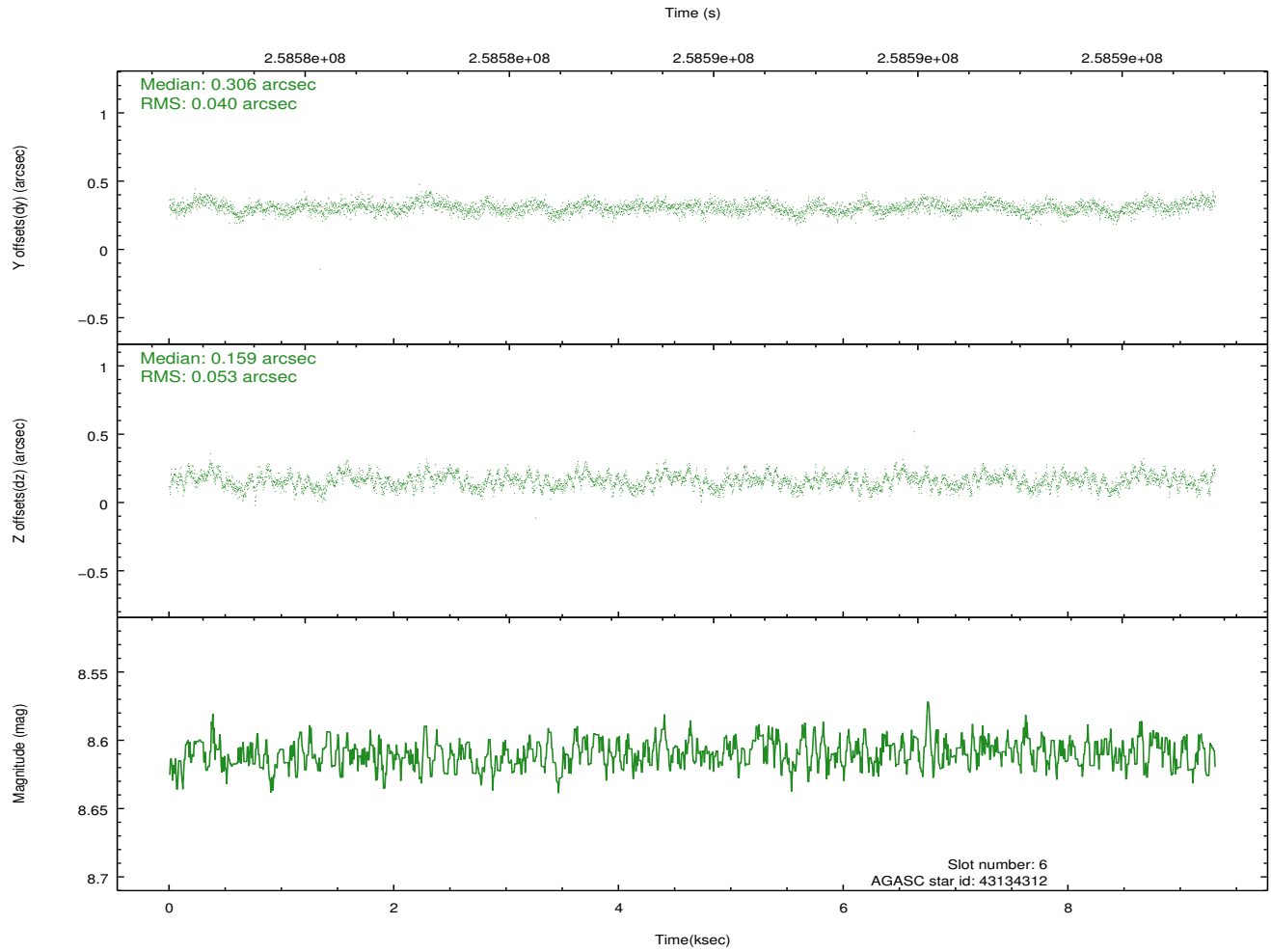
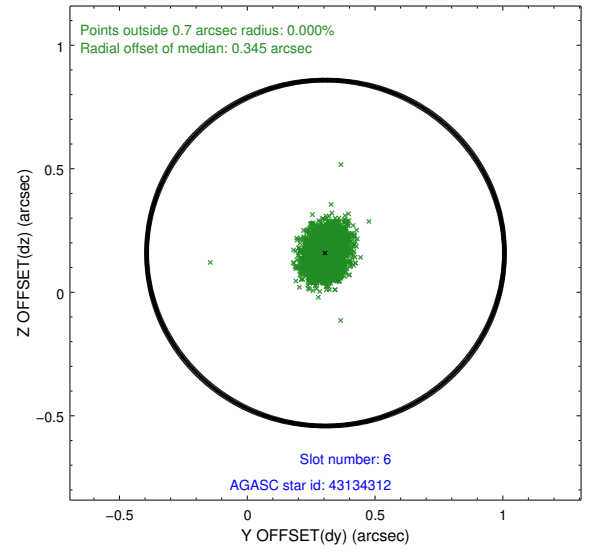
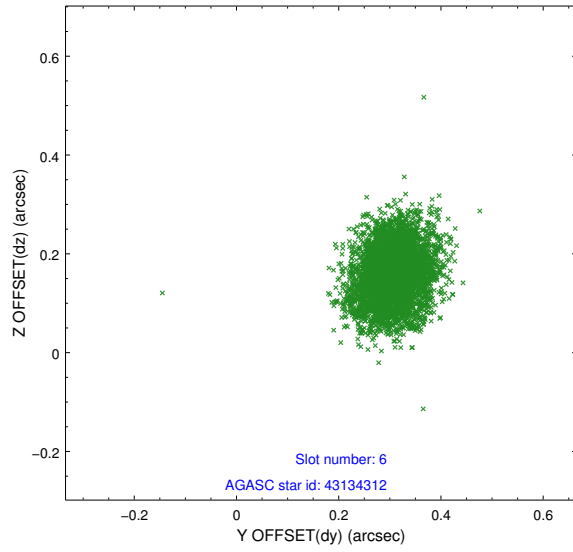
## 2.4.2 Slot 4



### 2.4.3 Slot 5

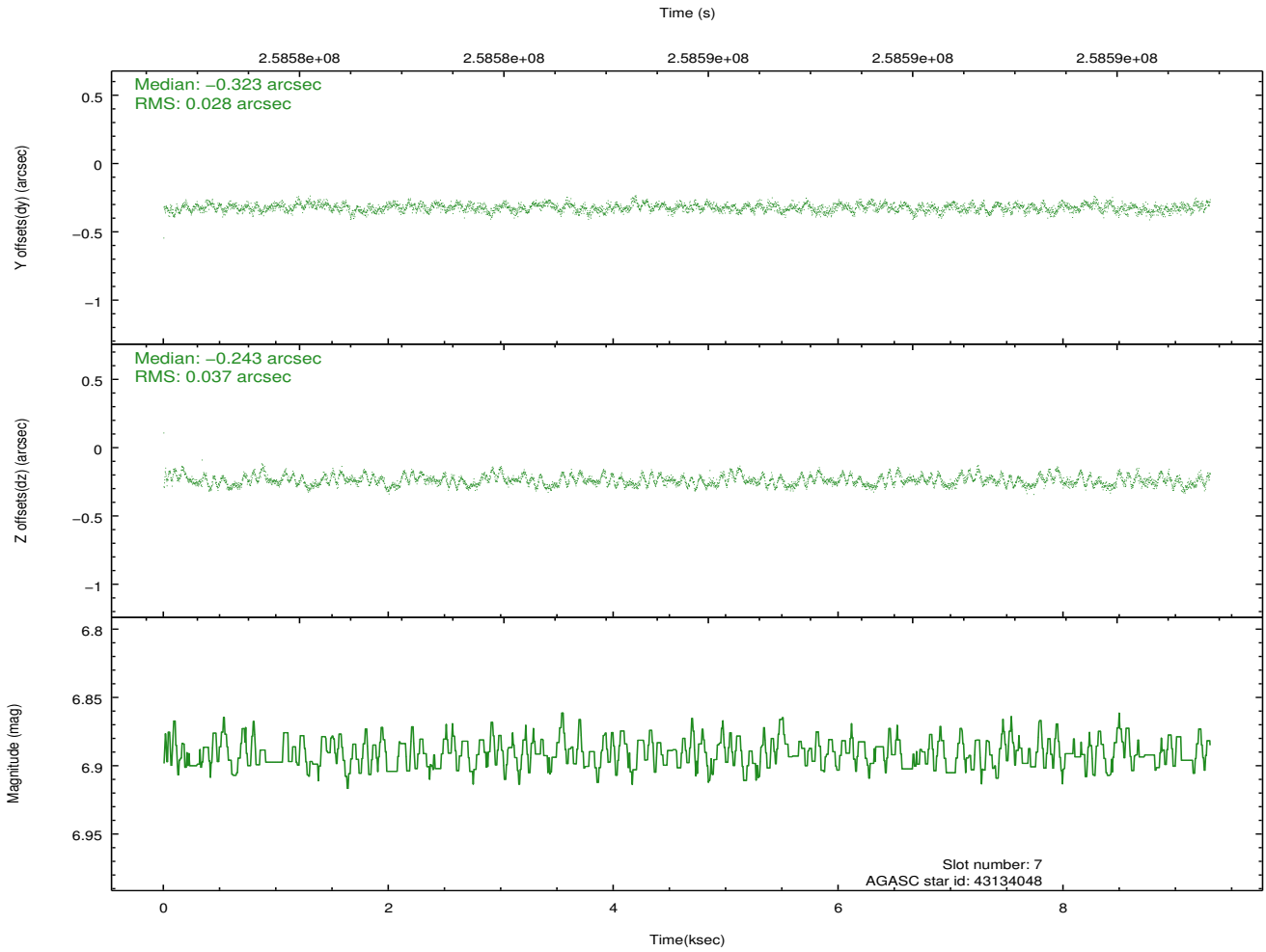
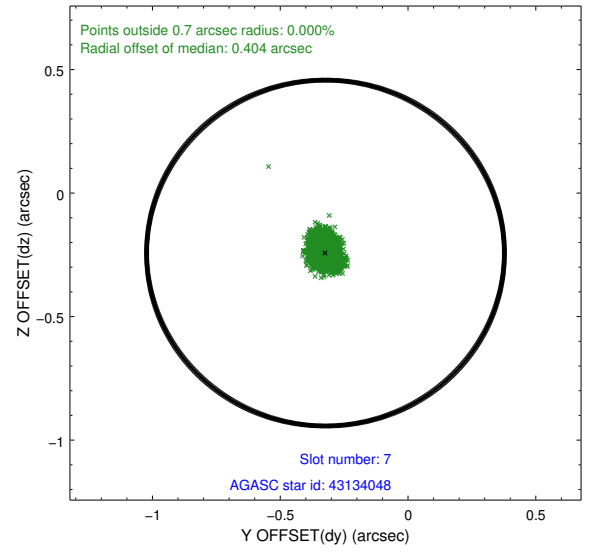
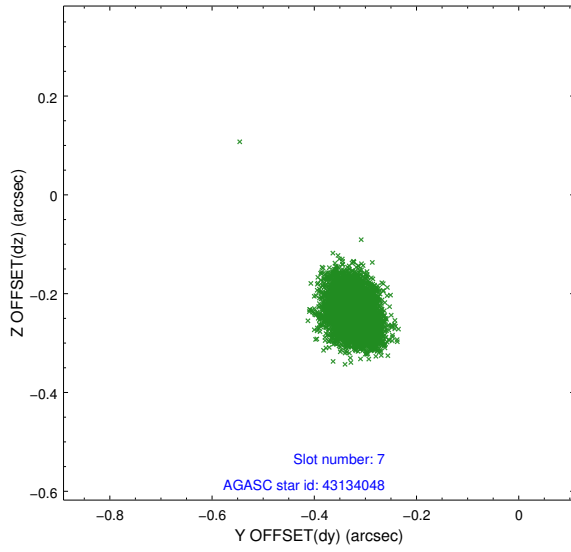


## 2.4.4 Slot 6



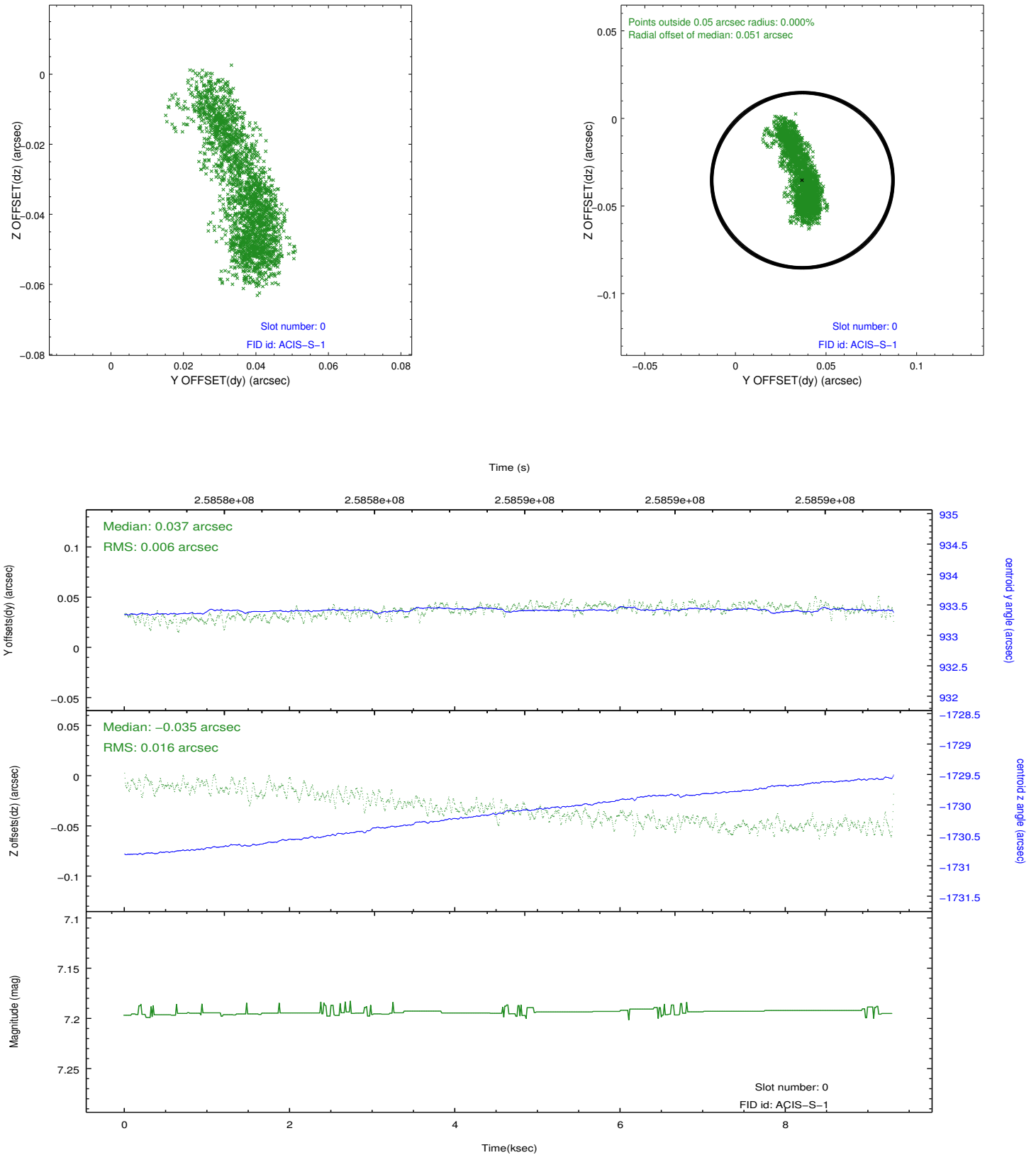


## 2.4.5 Slot 7

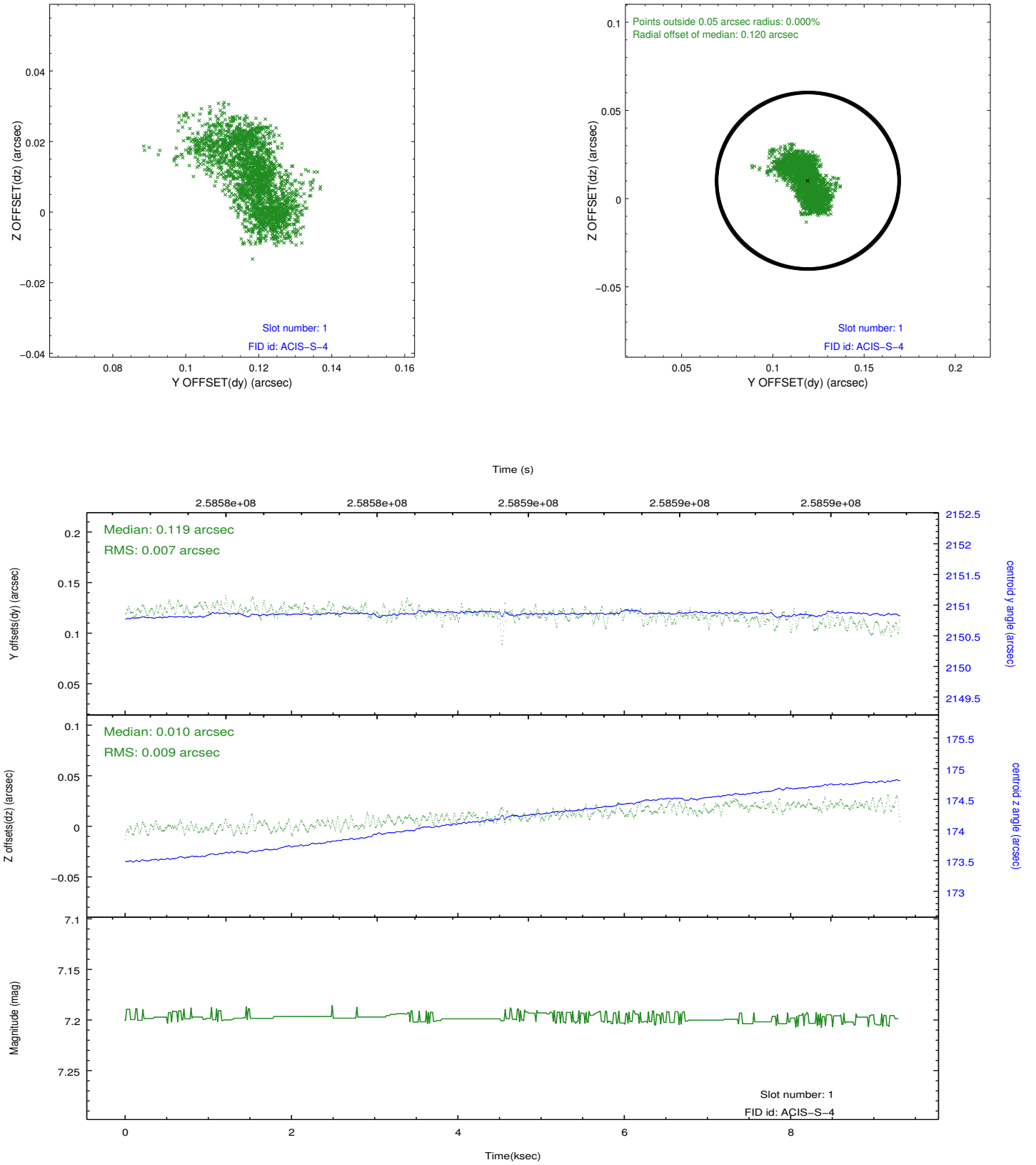


## 2.5 FID Slots

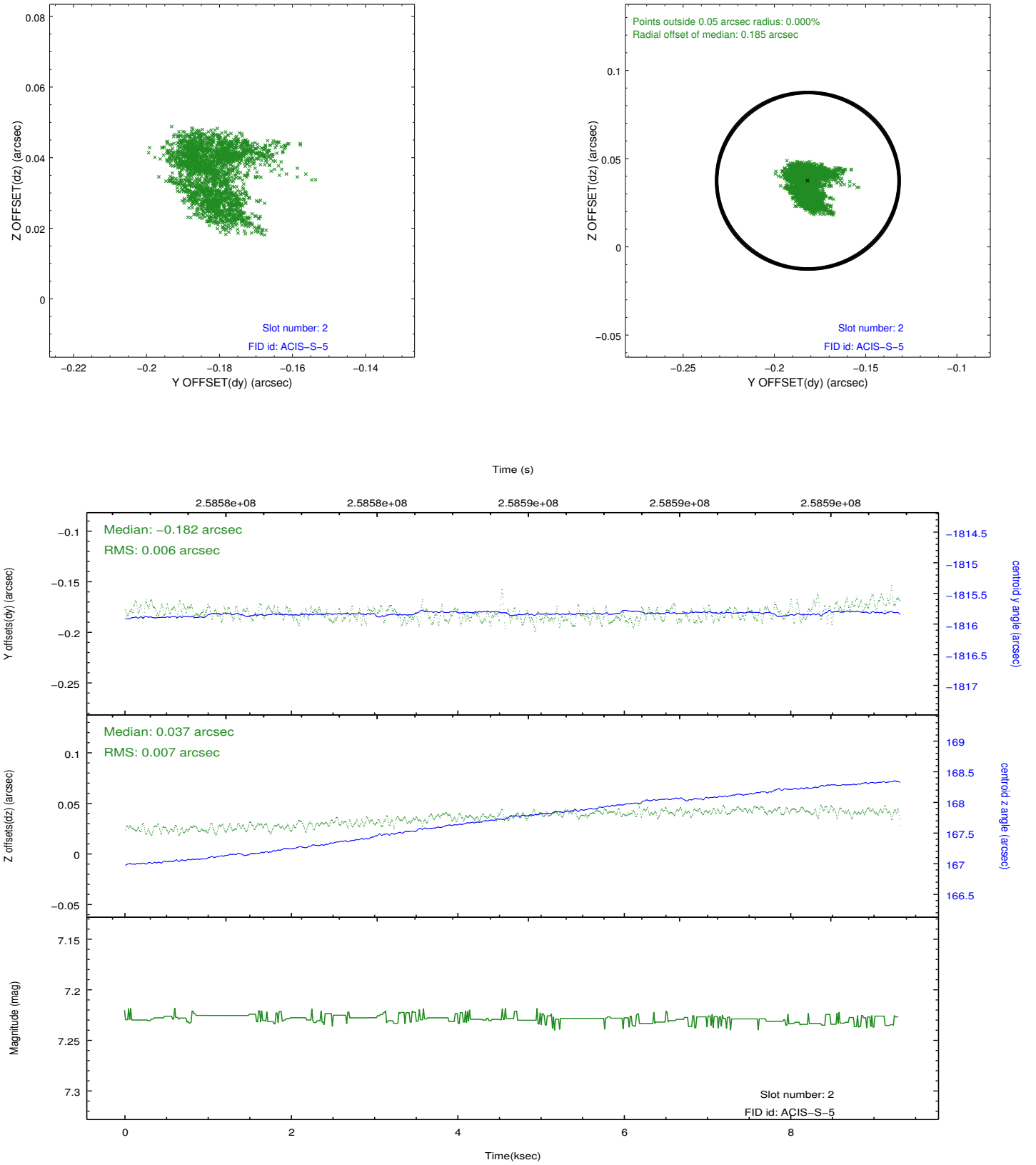
### 2.5.1 Slot 0



## 2.5.2 Slot 1



### 2.5.3 Slot 2



## A Summary

### A.1 Status

V&V Scientist	Jen Lauer
V&V Date (YYYY-MM-DD)	2012.03.28
V&V Edition	1
V&V Disposition and Status	OK
V&V Charge Time	9.04639996

### A.2 Comments