

V&V Reference Report

L2 ASCDS Version : 8.4.3

Observation 6857 - L2 Version 2
Chandra X-Ray Center

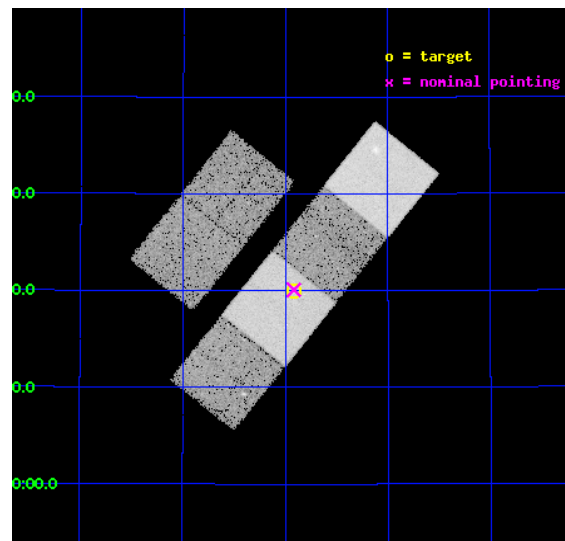
L2 Processing Date : Mar 23 2012

Contents

1	Front	2
2	OBI	3
2.1	OBI	3
2.1.1	Images	3
2.1.2	Bias	3
2.1.3	Parameters	4
2.1.4	Events	4
2.2	Compared Parameters	5
2.3	Aspect	6
2.4	Star Slots	9
2.4.1	Slot 3	9
2.4.2	Slot 4	10
2.4.3	Slot 5	11
2.4.4	Slot 6	12
2.4.5	Slot 7	13
2.5	FID Slots	14
2.5.1	Slot 0	14
2.5.2	Slot 1	15
2.5.3	Slot 2	16
A	Summary	17
A.1	Status	17
A.2	Comments	17

1 Front

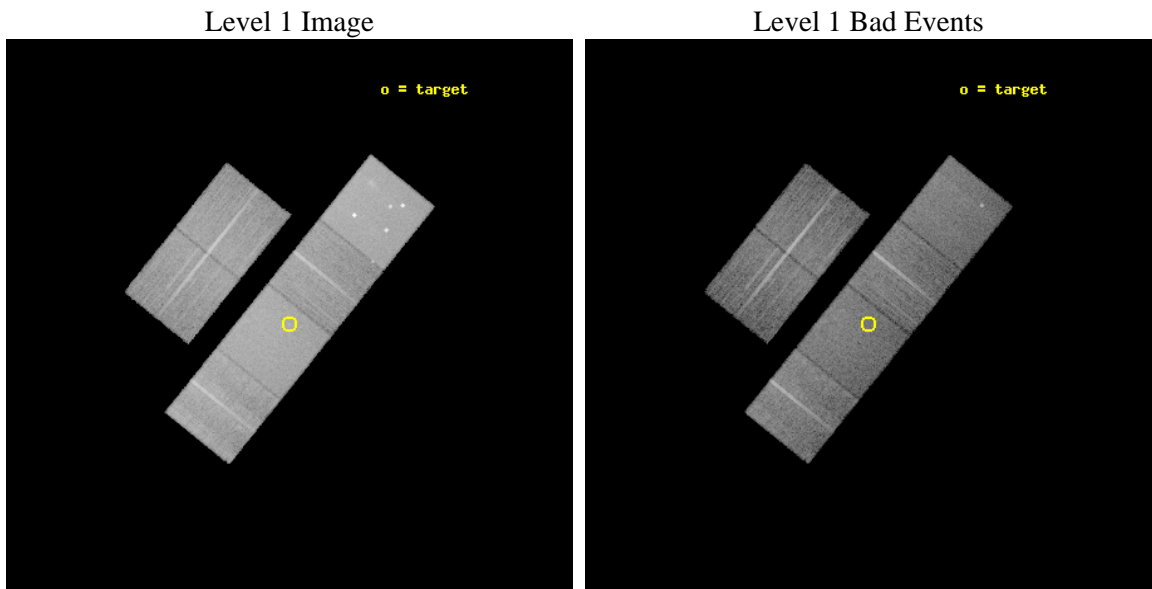
seq_num	701275	Sequence number
obs_id	6857	Observation id
title	Chandra observations of (U)LIRGs with double nuclei: search for binary AGN and X-ray luminous starbursts	Proposal title
observer	Dr. Stefanie Komossa	Principal investigator
object	UGC 4881	Source name
dtcycle	0	
cycle	P	events from which exps? Prim/Second/Both
ra_targ	138.978333	Observer's specified target RA [deg]
dec_targ	44.332778	Observer's specified target Dec [deg]
ra_nom	138.97906778844	Nominal RA [deg]
dec_nom	44.334754867003	Nominal Dec [deg]
roll_nom	128.84237160818	Nominal Roll [deg]
revision	2	Processing version of data
ontime	14956.799944282	Sum of GTIs [s]
livetime	14767.407937483	Livetime [s]
ontime2	14956.799944282	Sum of GTIs [s]
ontime3	14956.77085638	Sum of GTIs [s]
ontime5	14956.799944282	Sum of GTIs [s]
ontime6	14956.799944282	Sum of GTIs [s]
ontime7	14956.799944282	Sum of GTIs [s]
ontime8	14956.729816407	Sum of GTIs [s]
l2events	198703	Number of level 2 events



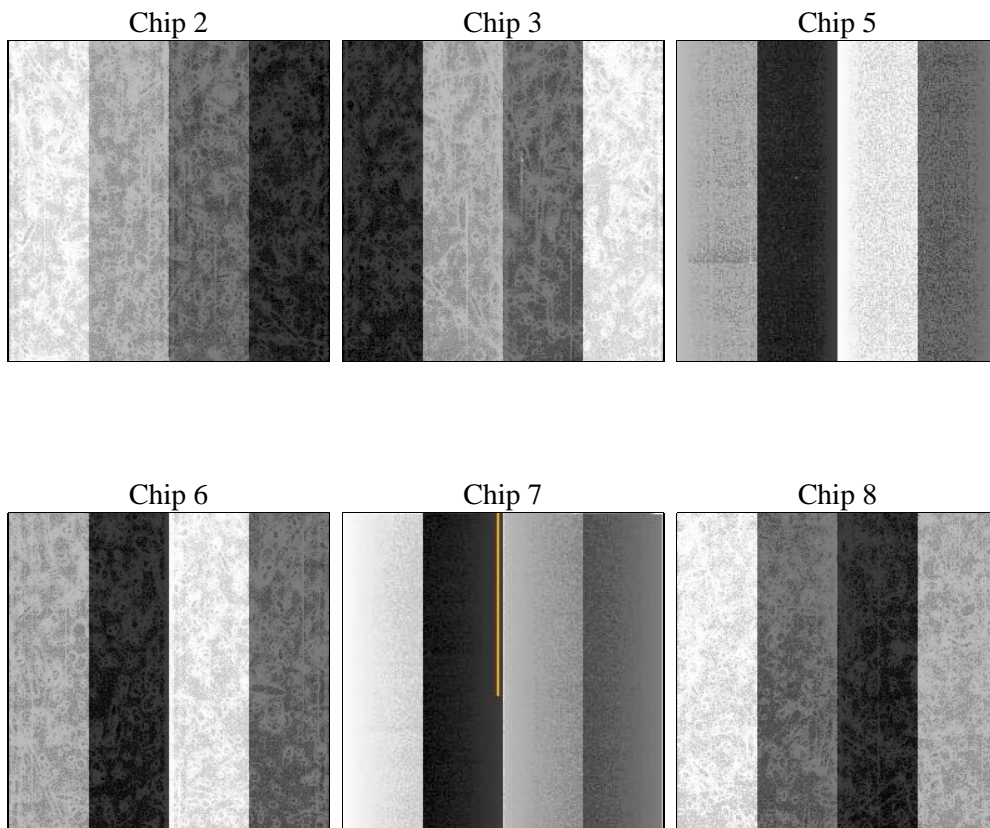
2 OBI

2.1 OBI

2.1.1 Images



2.1.2 Bias



2.1.3 Parameters

obi_num	1	Obi number	sched_exp_time	15000.000000	[s] Scheduled observation exposure time
ascdsver	8.4.3	Processing system revision	ontime	14956.799944282	Sum of GTIs [s]
caldsver	4.4.8	 	ontime2	14956.799944282	Sum of GTIs [s]
date	2012-03-23T13:41:30	Date and time of file creation	ontime3	14956.77085638	Sum of GTIs [s]
revision	2	Processing version of data	ontime5	14956.799944282	Sum of GTIs [s]
			ontime6	14956.799944282	Sum of GTIs [s]
			ontime7	14956.799944282	Sum of GTIs [s]
			ontime8	14956.729816407	Sum of GTIs [s]
			l1events	873445	Number of level 1 events

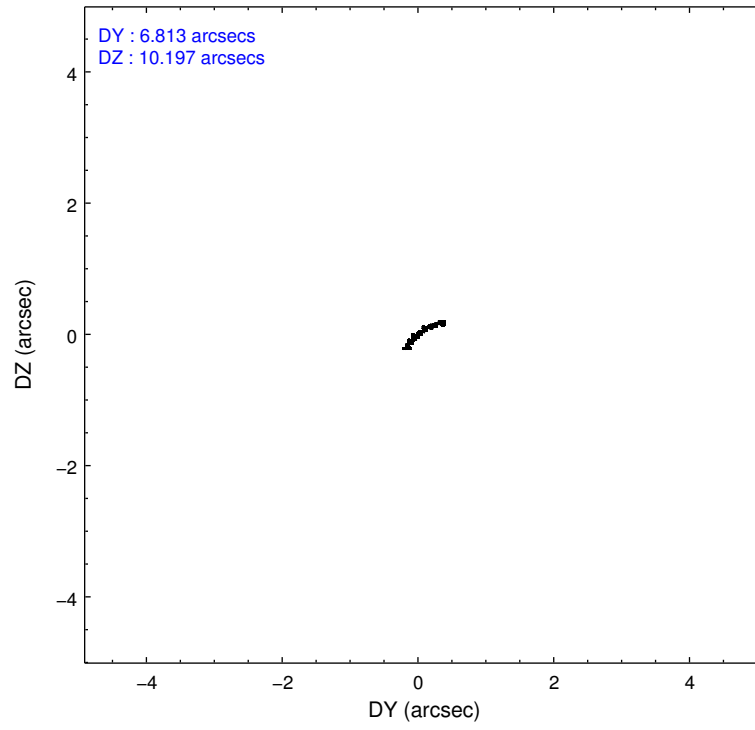
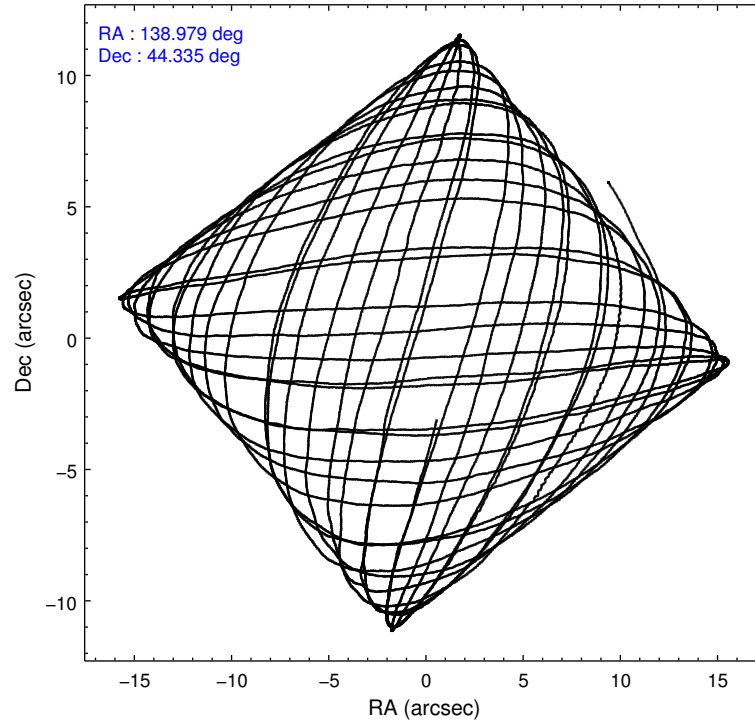
2.1.4 Events

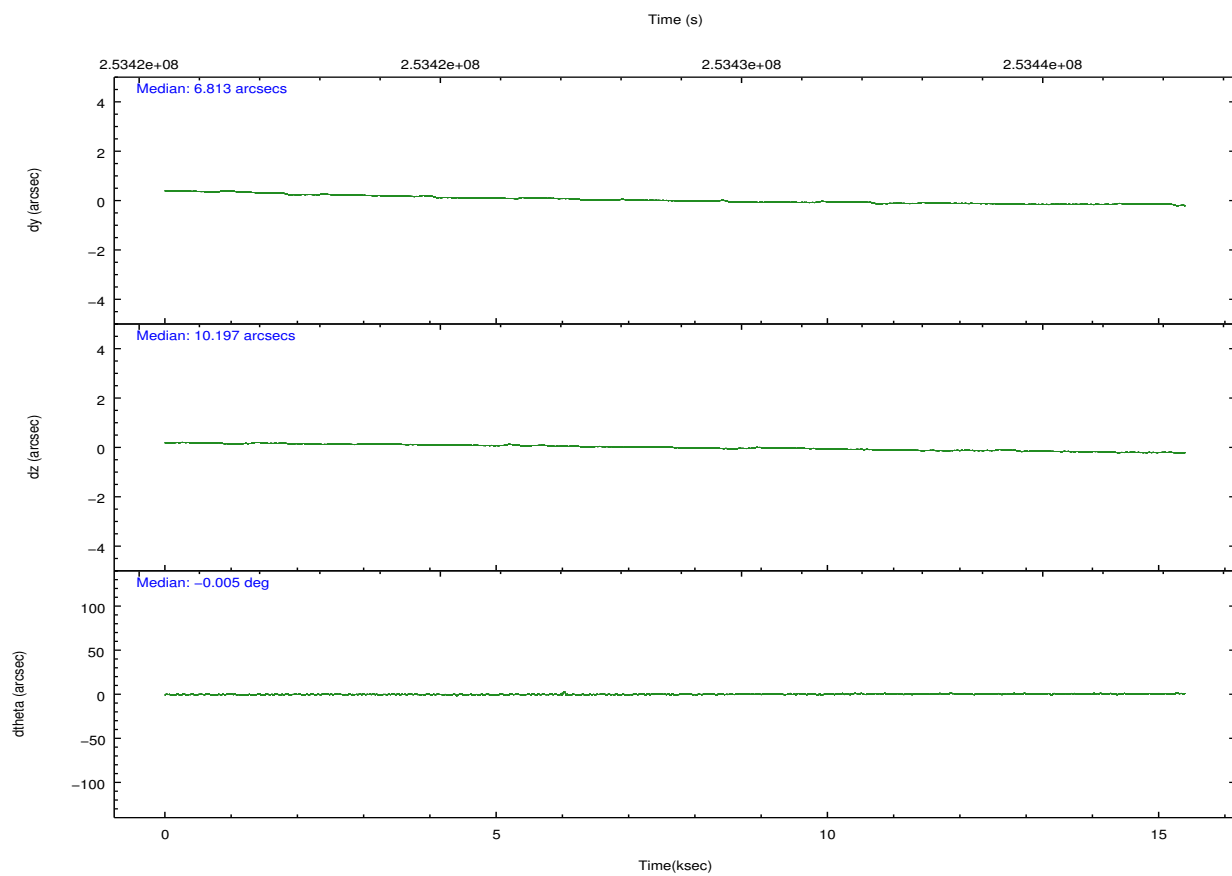
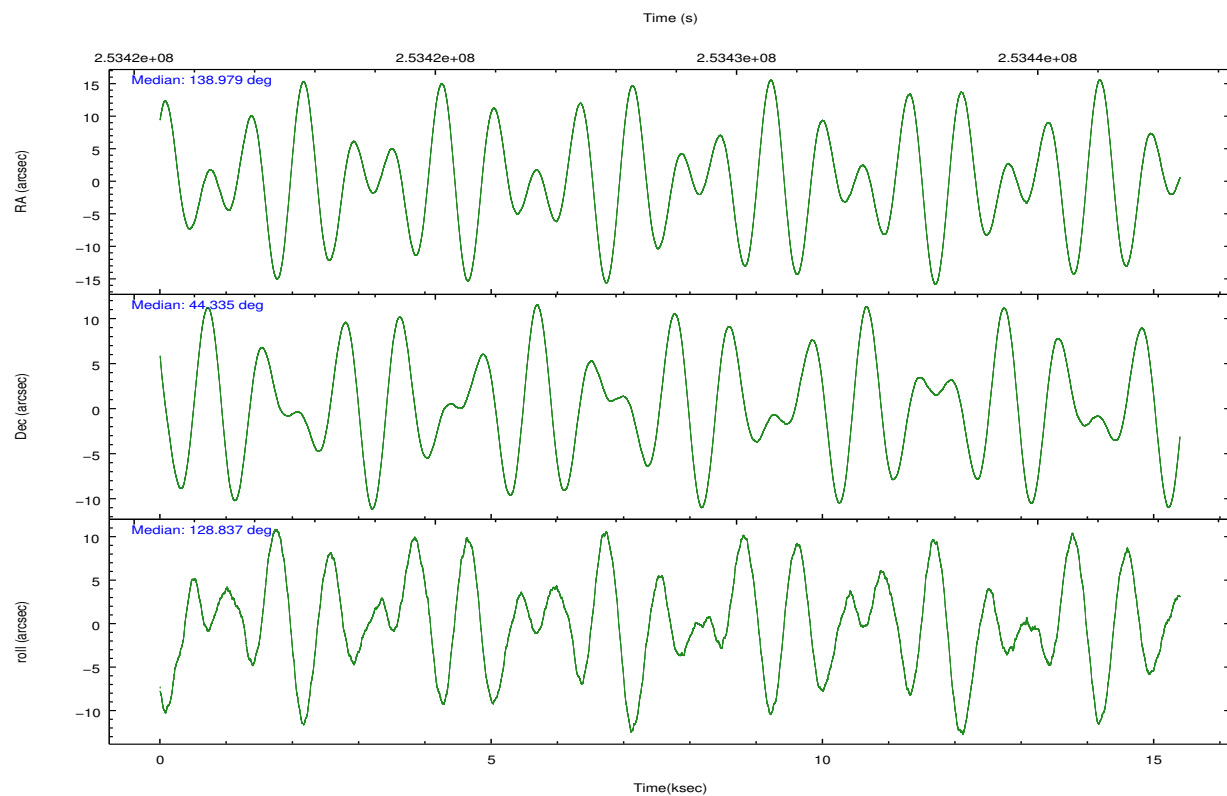
	ccd 2	ccd 3	ccd 5	ccd 6	ccd 7	ccd 8		ccd 2	ccd 3	ccd 5	ccd 6	ccd 7	ccd 8
level 1 events	124242	115784	191979	121132	166065	154243	grade 0 events	6219	6087	14662	5515	5915	10427
rejected events	110018	101925	99896	106824	97133	120488		5%	5%	7%	4%	3%	6%
rejected %	88%	88%	52%	88%	58%	78%	grade 1 events	79	78	500	66	148	113
								0%	0%	0%	0%	0%	0%
							grade 2 events	2943	2691	26032	3079	13821	7777
								2%	2%	13%	2%	8%	5%
							grade 3 events	1361	1326	3411	1403	6007	3537
								1%	1%	1%	1%	3%	2%
							grade 4 events	1339	1335	3135	1346	5971	3348
								1%	1%	1%	1%	3%	2%
							grade 5 events	4715	5383	13697	5671	15927	7567
								3%	4%	7%	4%	9%	4%
							grade 6 events	2362	2425	44866	2967	37229	8689
								1%	2%	23%	2%	22%	5%
							grade 7 events	105224	96459	85676	101085	81047	112785
								84%	83%	44%	83%	48%	73%

2.2 Compared Parameters

Parameter	Planned	Actual	Parameter	Planned	Actual
Instrument	ACIS	ACIS	Obspar format version number	7	7
Detector	ACIS-235678	ACIS-235678	Obspar file type	PREDICTED	ACTUAL
Grating	NONE	NONE	Obspar update status	NONE	UPDATED
Data mode	FAINT	FAINT	Number of optional ACIS chips dropped	0	0
Observation mode	POINTING	POINTING	On-chip summing requested	N	N
[deg] Pointing RA	139.014745	138.9790677884359	Subarray requested	NONE	NONE
[deg] Pointing Dec	44.325314	44.33475486700327	Alternating exposures requested	N	N
[deg] Pointing Roll	128.660813	128.8423716081848	[s] Primary exposure time	0.000000	3.2
[mm] SIM focus pos	-0.684267	-0.6828225247311905			
[mm] SIM defocus	0	0.001444936568705701			
[mm] SIM translation stage pos	-190.132523	-190.1400660498719			
[mm] SIM translation stage offset	0	0.00754346686406393			
[s] Observation start time (MET)	253421598.184000	253420530.33542			
Observation start date	2006-01-12T02:52:13	2006-01-12T02:35:30			
[s] Observation end time (MET)	253436598.184000	253437105.09869			
Observation end date	2006-01-12T07:02:13	2006-01-12T07:11:45			
Read mode	TIMED	TIMED			

2.3 Aspect



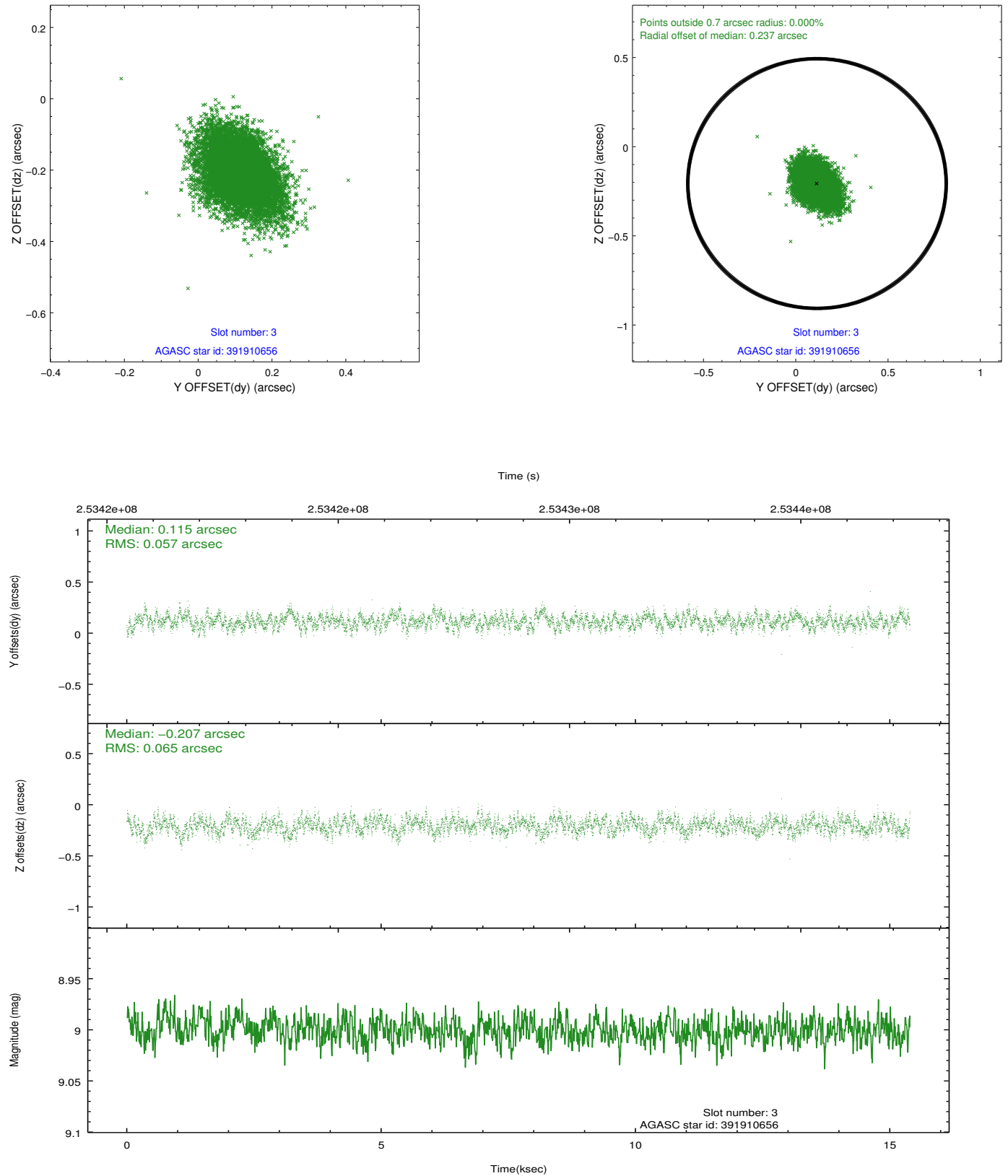


Slot Statistics

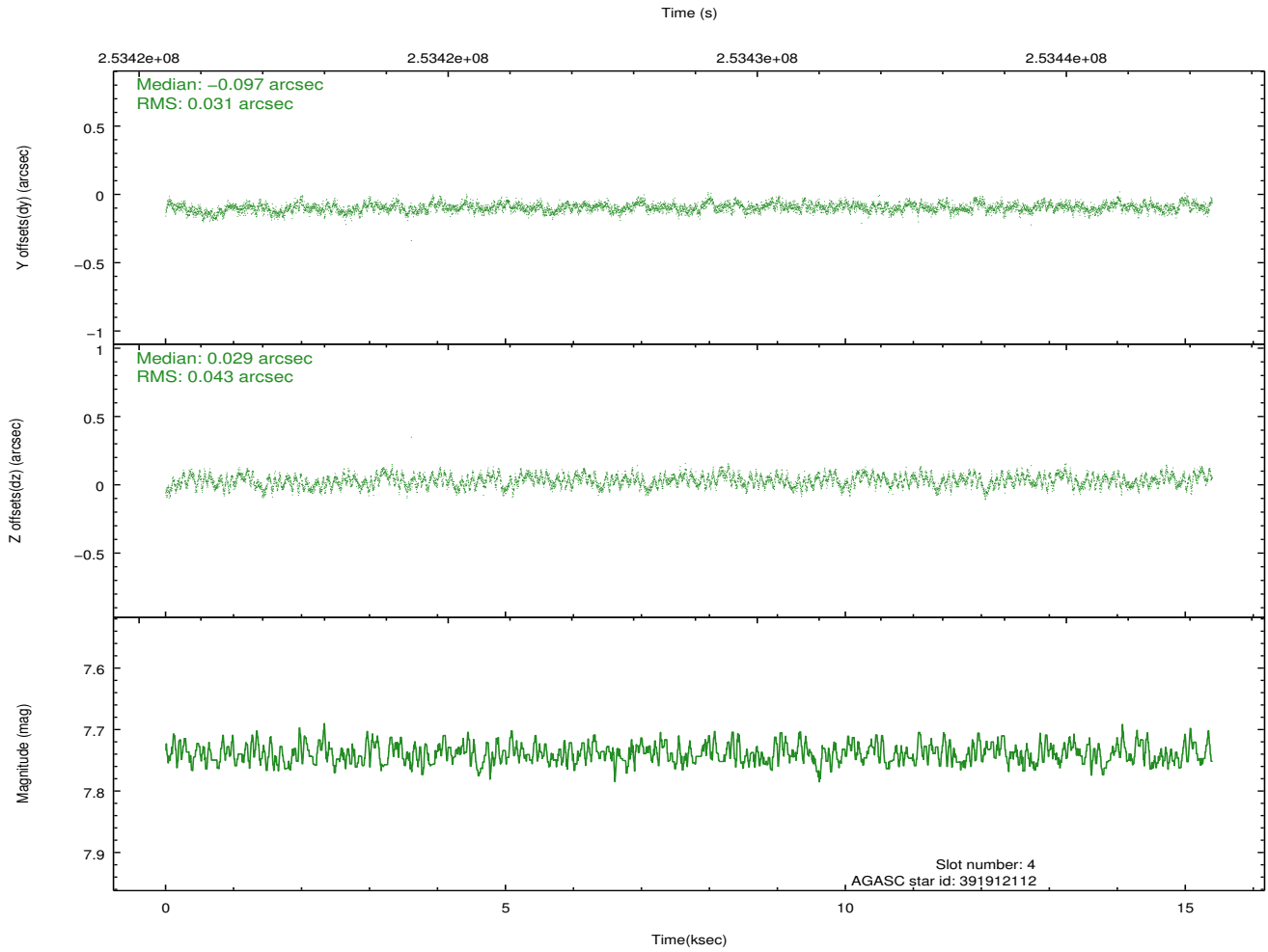
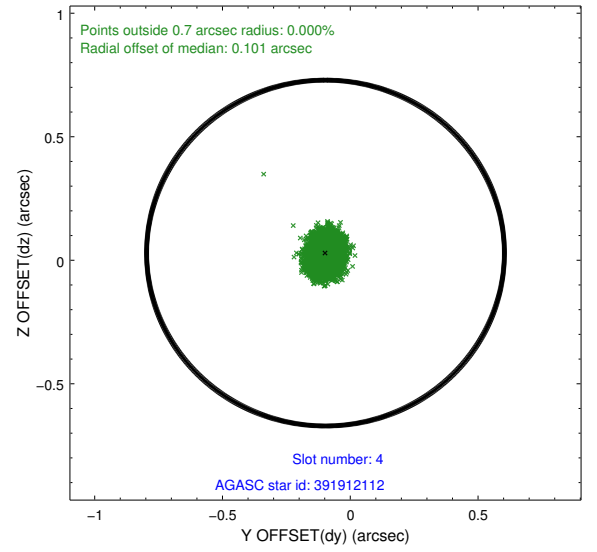
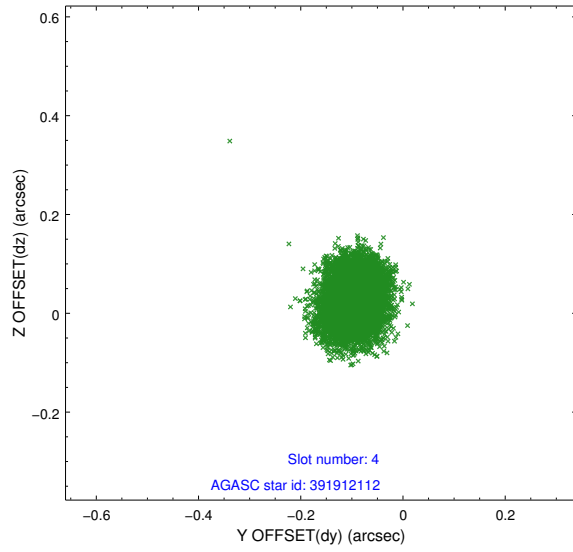
slot	status	id	mag	n_pts	med_dy	med_dz	dr1	dr2	ra	dec	mean_y	mean_z
0	FID	ACIS-S-2	7.10	3754	-0.068	-0.034	0.010	0.022	0.000000	0.000000	-759.62	-1731.50
1	FID	ACIS-S-4	7.21	3755	0.121	0.042	0.010	0.023	0.000000	0.000000	2153.66	176.83
2	FID	ACIS-S-5	7.23	3754	-0.084	0.001	0.009	0.015	0.000000	0.000000	-1812.15	170.70
3	GUIDE	391910656	9.00	7507	0.115	-0.207	0.091	0.149	138.431486	43.827826	-447.89	2298.33
4	GUIDE	391912112	7.74	7510	-0.097	0.029	0.056	0.090	138.344023	44.310586	1043.42	1378.48
5	GUIDE	391913608	9.17	7505	0.025	0.173	0.096	0.149	139.631220	44.436179	-673.13	-1489.97
6	GUIDE	391915632	9.04	7505	0.101	-0.107	0.083	0.138	139.023887	43.559171	-2168.70	1704.15
7	GUIDE	391917520	6.49	7509	-0.143	0.113	0.040	0.066	138.959805	44.697917	1135.14	-727.60

2.4 Star Slots

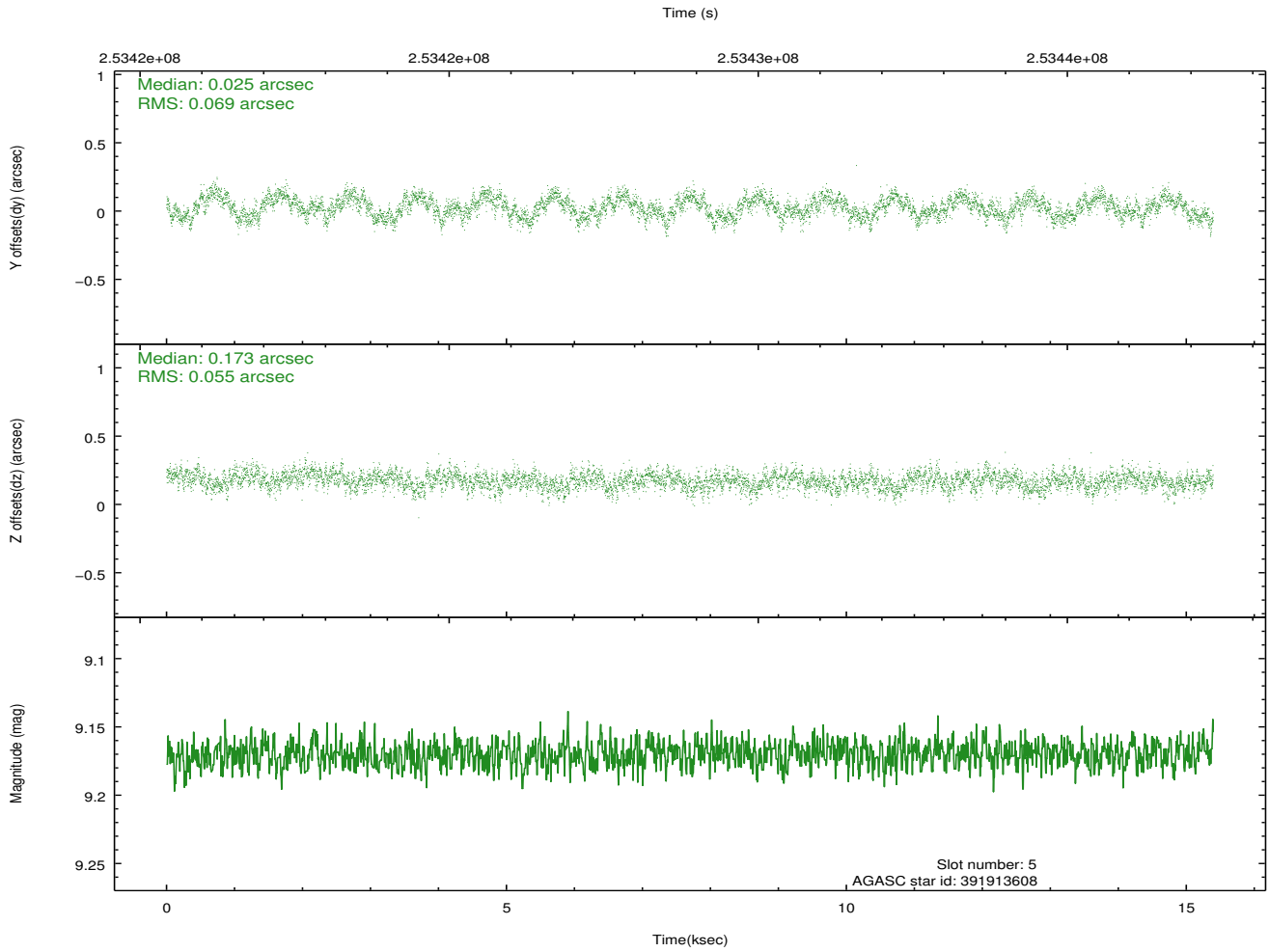
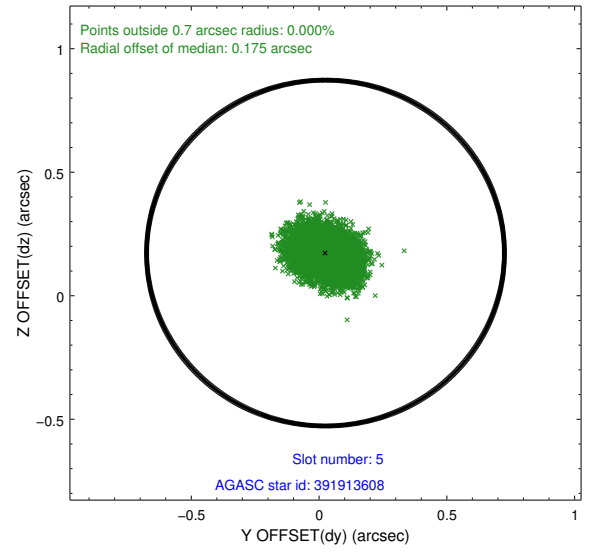
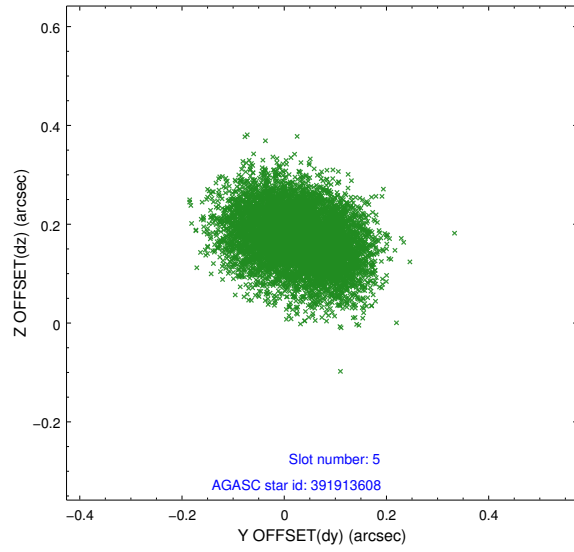
2.4.1 Slot 3



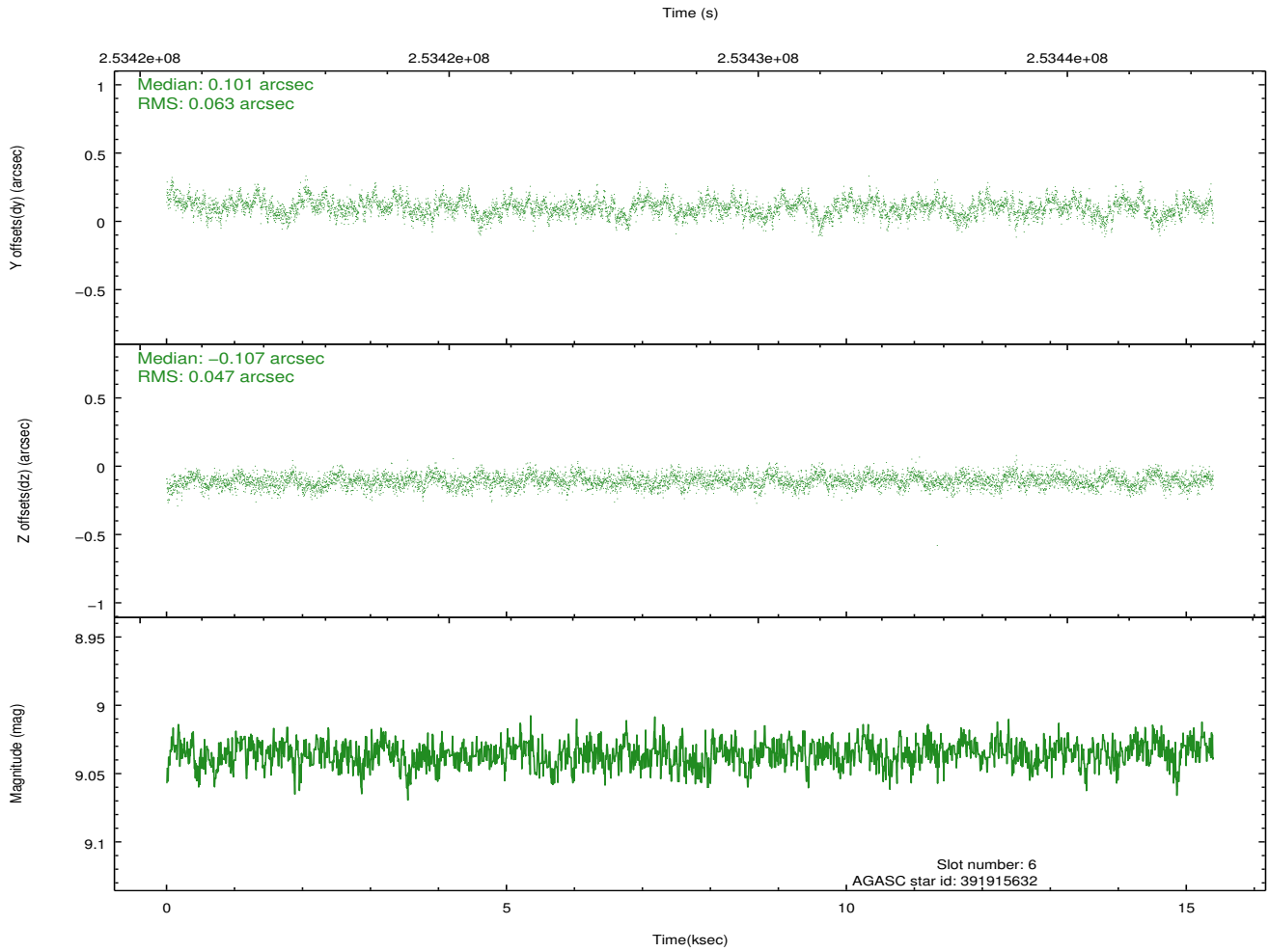
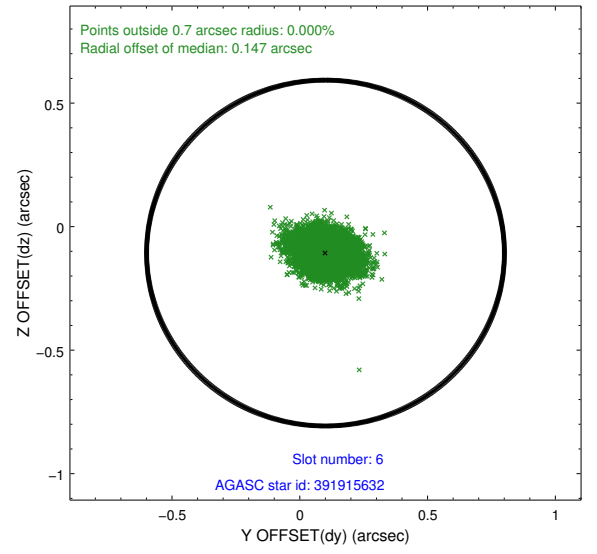
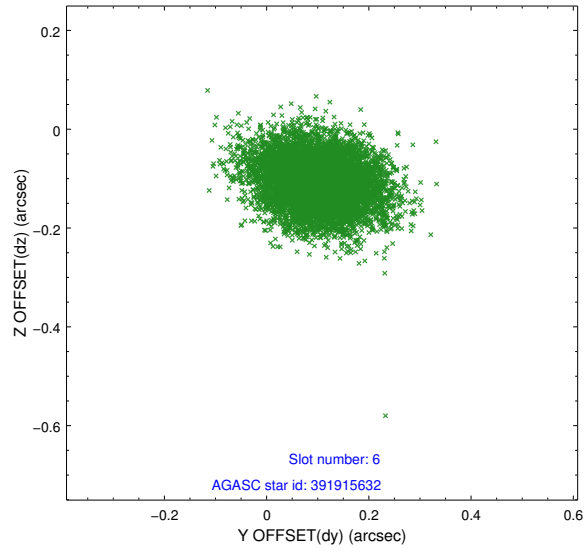
2.4.2 Slot 4



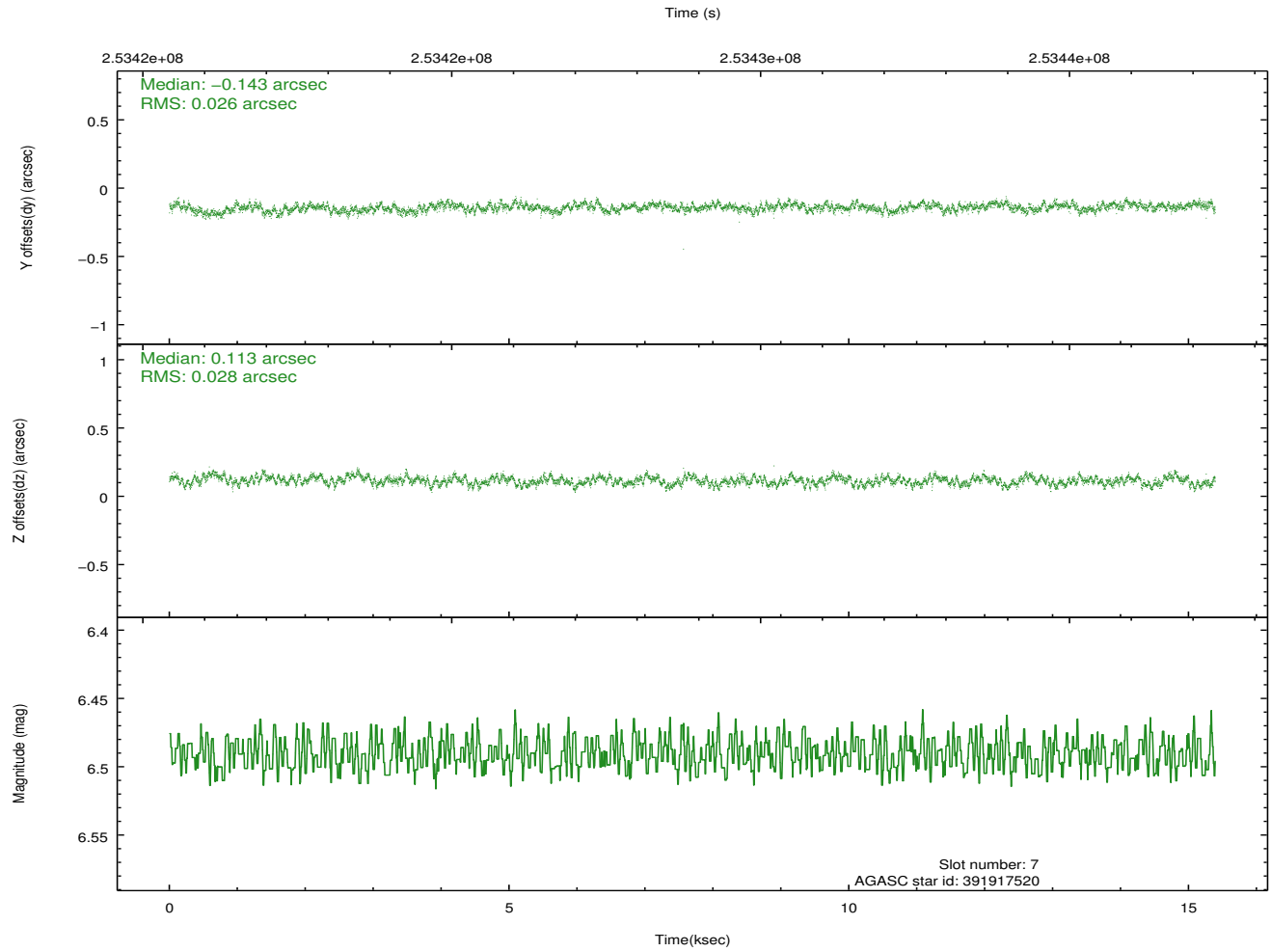
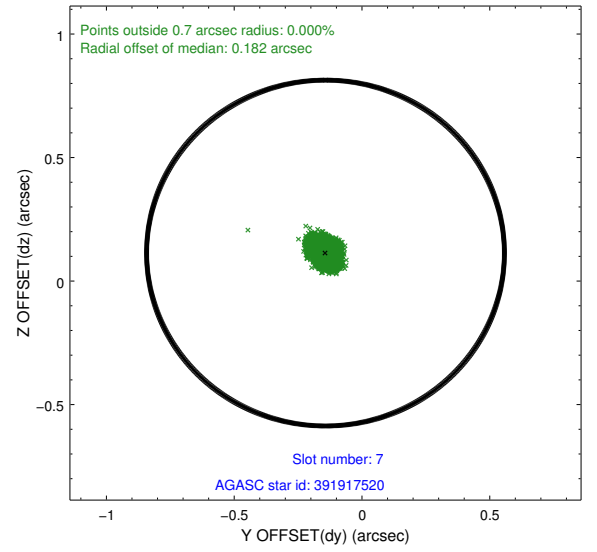
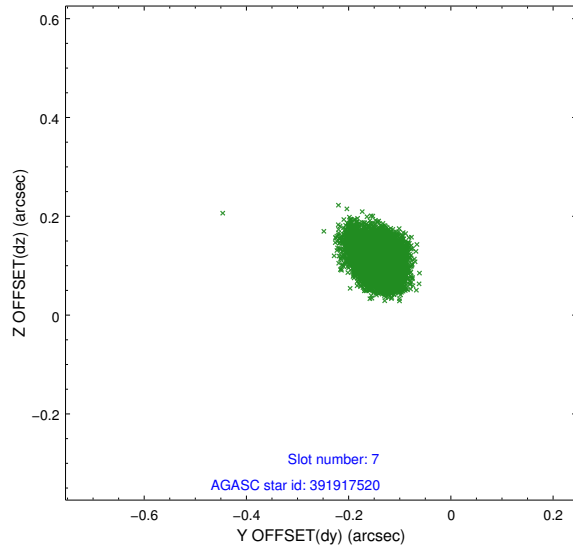
2.4.3 Slot 5



2.4.4 Slot 6

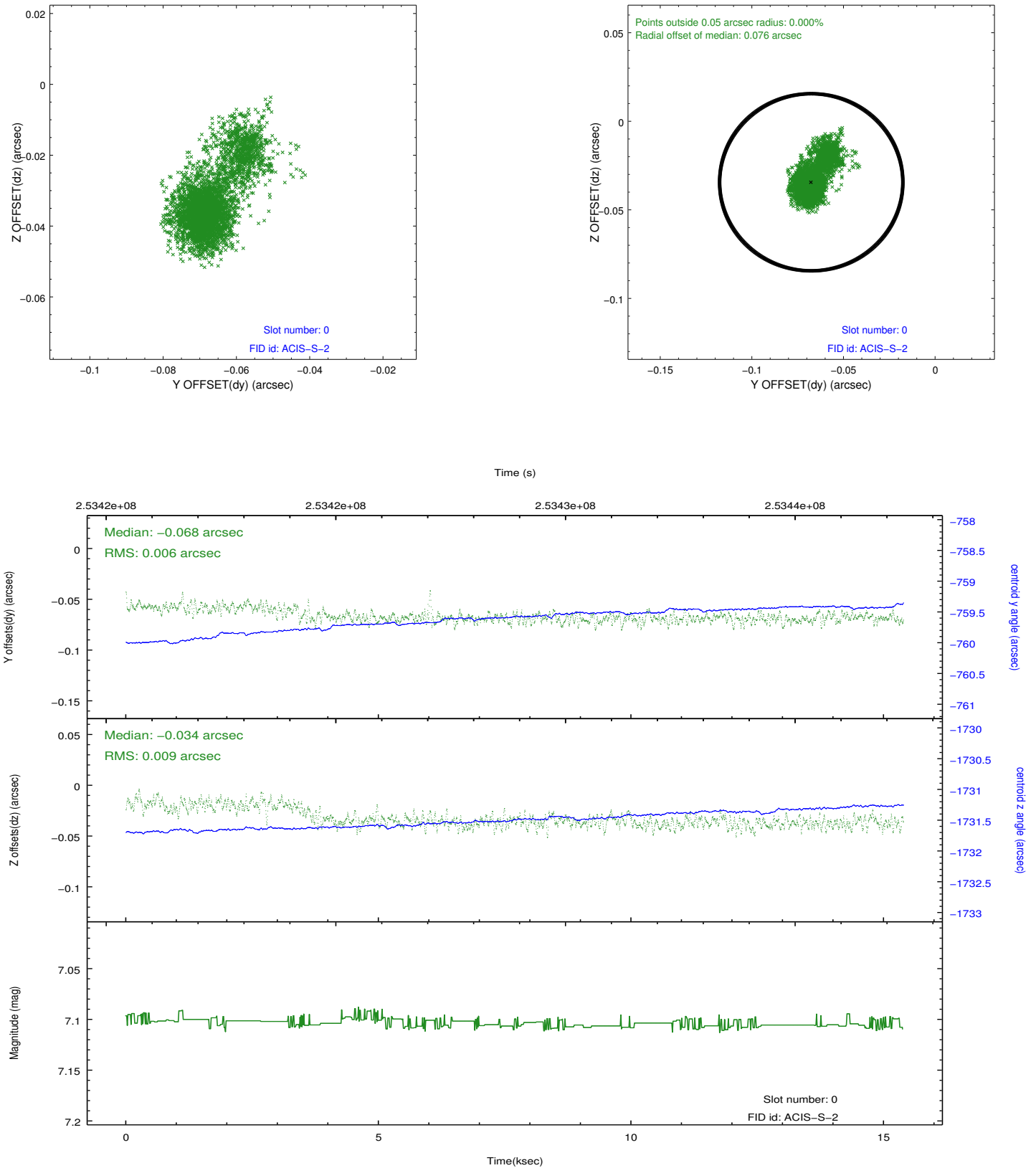


2.4.5 Slot 7

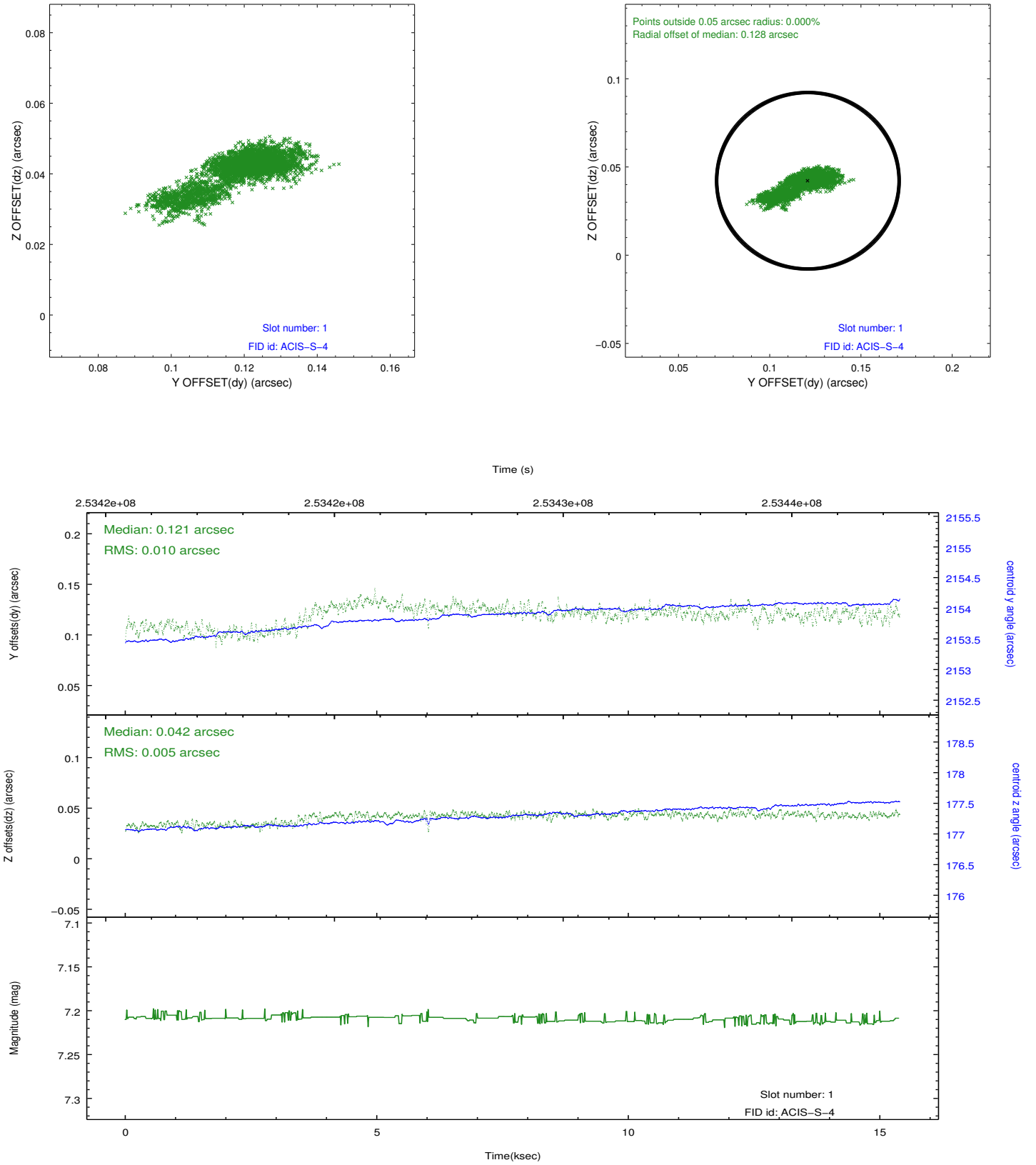


2.5 FID Slots

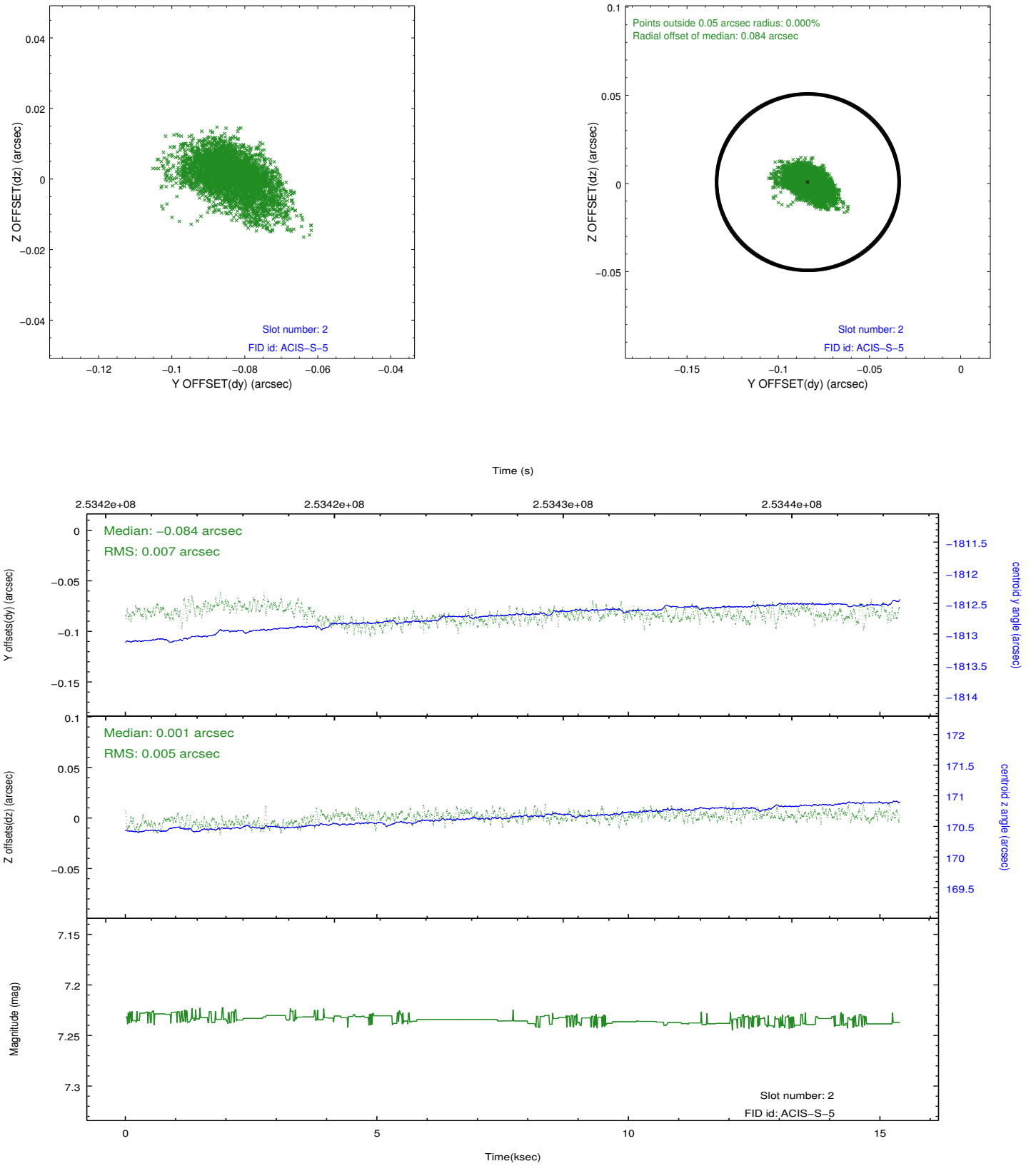
2.5.1 Slot 0



2.5.2 Slot 1



2.5.3 Slot 2



A Summary

A.1 Status

V&V Scientist	Jen Lauer
V&V Date (YYYY-MM-DD)	2012.03.23
V&V Edition	1
V&V Disposition and Status	OK
V&V Charge Time	14.9567999

A.2 Comments