

V&V Reference Report

L2 ASCDS Version : 8.4.3

Observation 6807 - L2 Version 2
Chandra X-Ray Center

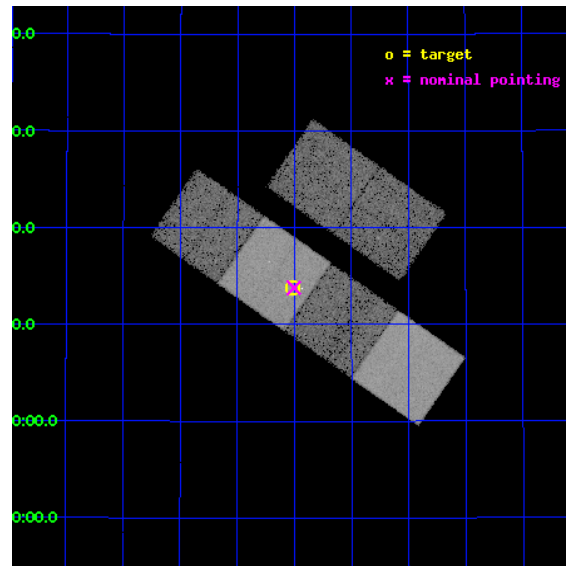
L2 Processing Date : Mar 25 2012

Contents

1	Front	2
2	OBI	3
2.1	OBI	3
2.1.1	Images	3
2.1.2	Bias	3
2.1.3	Parameters	4
2.1.4	Events	4
2.2	Compared Parameters	5
2.3	Aspect	6
2.4	Star Slots	9
2.4.1	Slot 3	9
2.4.2	Slot 4	10
2.4.3	Slot 5	11
2.4.4	Slot 6	12
2.4.5	Slot 7	13
2.5	FID Slots	14
2.5.1	Slot 0	14
2.5.2	Slot 1	15
2.5.3	Slot 2	16
A	Summary	17
A.1	Status	17
A.2	Comments	17

1 Front

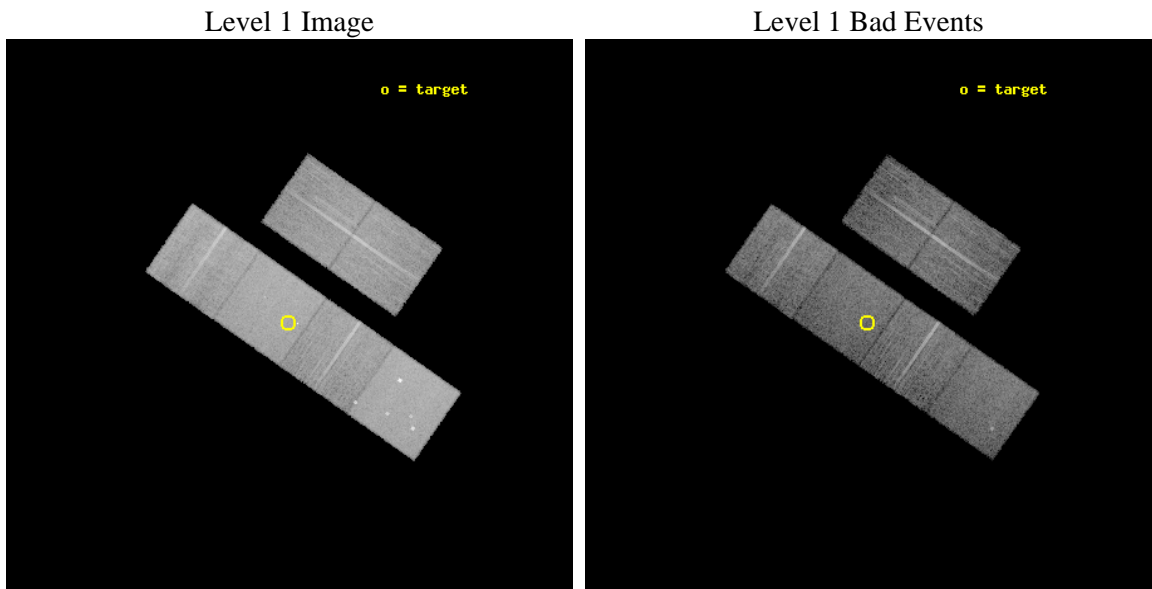
seq_num	701225	Sequence number
obs_id	6807	Observation id
title	X-ray Observations of Optically-Selected Type II Quasars	Proposal
observer	Prof. Michael Strauss	Principal investigator
object	SDSSJ0856+3713	Source name
dtcycle	0	
cycle	P	events from which exps? Prim/Second/Both
ra_targ	134.00375	Observer's specified target RA [deg]
dec_targ	37.229333	Observer's specified target Dec [deg]
ra_nom	134.00122125325	Nominal RA [deg]
dec_nom	37.229916379805	Nominal Dec [deg]
roll_nom	214.83645135918	Nominal Roll [deg]
revision	2	Processing version of data
ontime	10457.599961042	Sum of GTIs [s]
livetime	10325.179533525	Livetime [s]
ontime2	10457.599961042	Sum of GTIs [s]
ontime3	10457.599961042	Sum of GTIs [s]
ontime5	10457.599961042	Sum of GTIs [s]
ontime6	10457.599961042	Sum of GTIs [s]
ontime7	10457.599961042	Sum of GTIs [s]
ontime8	10457.599961042	Sum of GTIs [s]
l2events	167435	Number of level 2 events



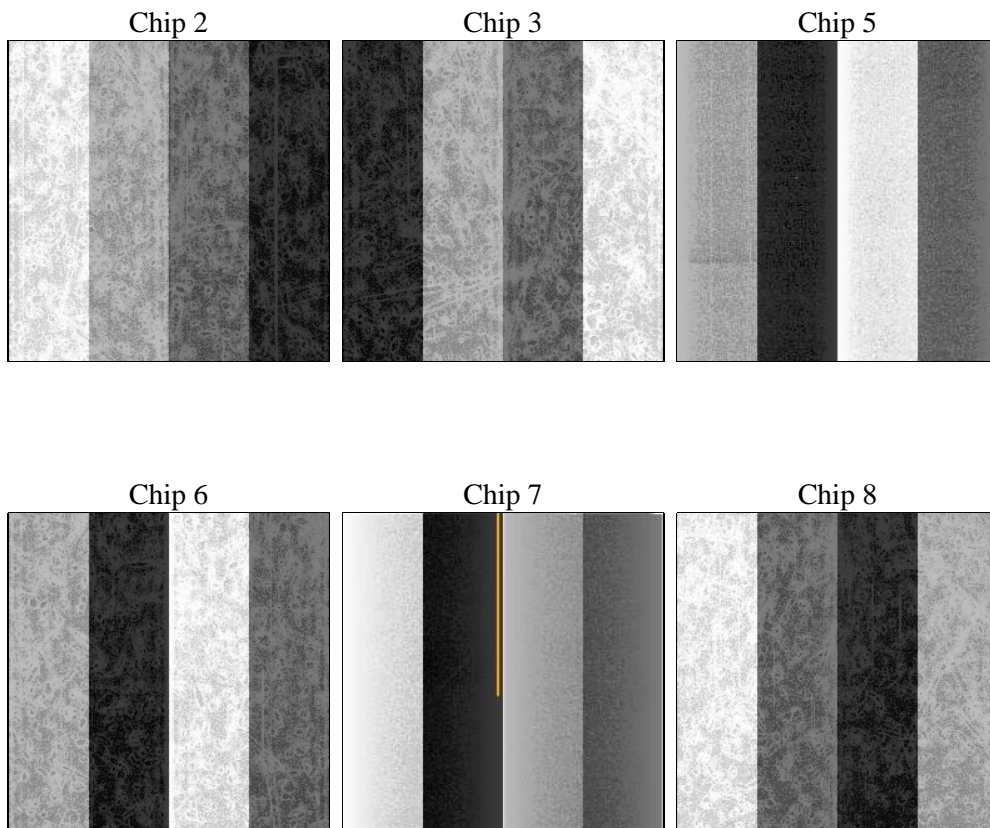
2 OBI

2.1 OBI

2.1.1 Images



2.1.2 Bias



2.1.3 Parameters

obi_num	0	Obi number	sched_exp_time	10281.690000	[s] Scheduled observation exposure time
ascdsver	8.4.3	Processing system revision	ontime	10457.599961042	Sum of GTIs [s]
caldsver	4.4.8	 	ontime2	10457.599961042	Sum of GTIs [s]
date	2012-03-25T16:10:14	Date and time of file creation	ontime3	10457.599961042	Sum of GTIs [s]
revision	2	Processing version of data	ontime5	10457.599961042	Sum of GTIs [s]
			ontime6	10457.599961042	Sum of GTIs [s]
			ontime7	10457.599961042	Sum of GTIs [s]
			ontime8	10457.599961042	Sum of GTIs [s]
			l1events	713820	Number of level 1 events

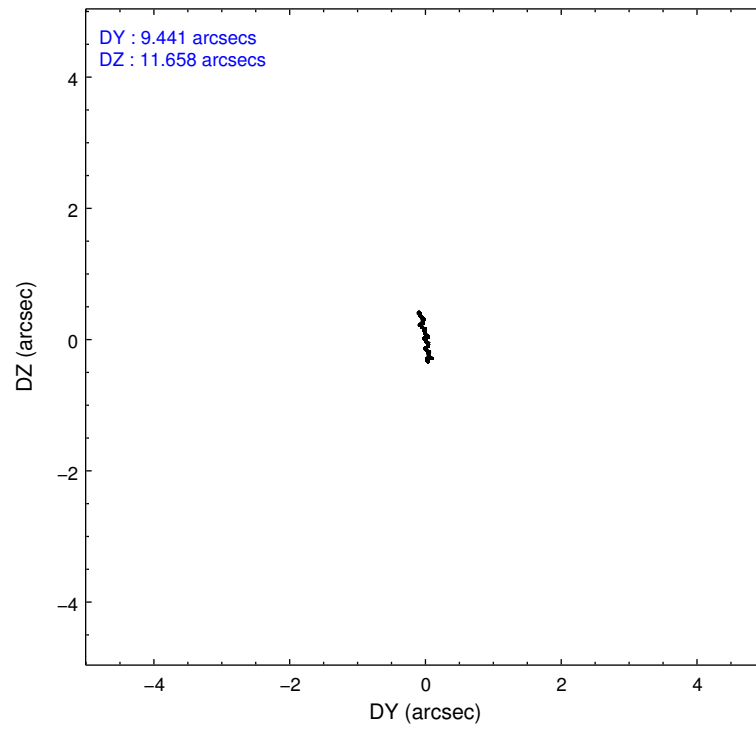
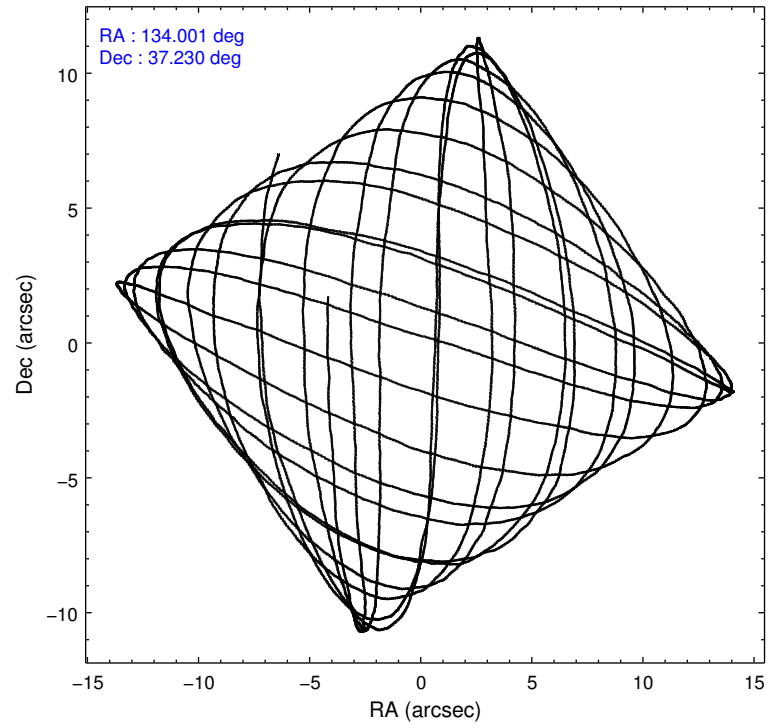
2.1.4 Events

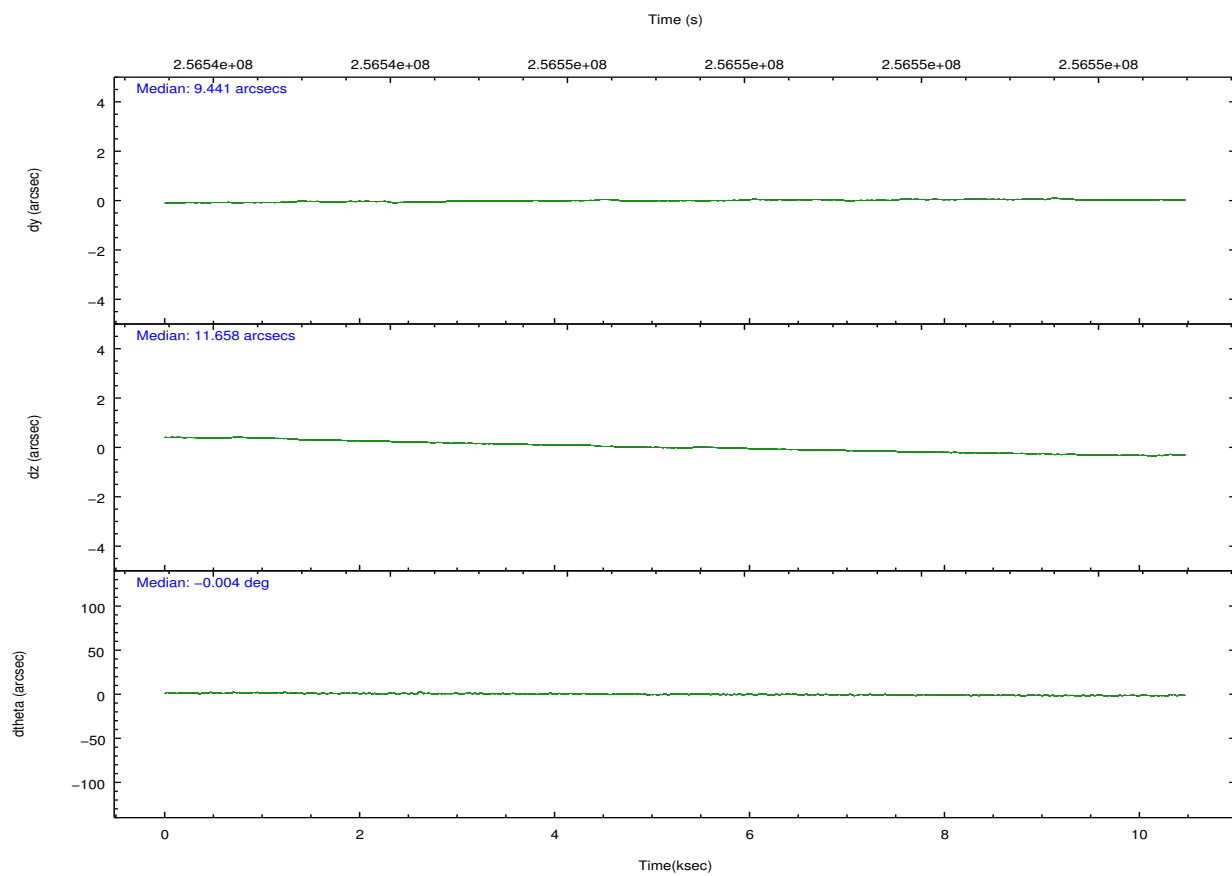
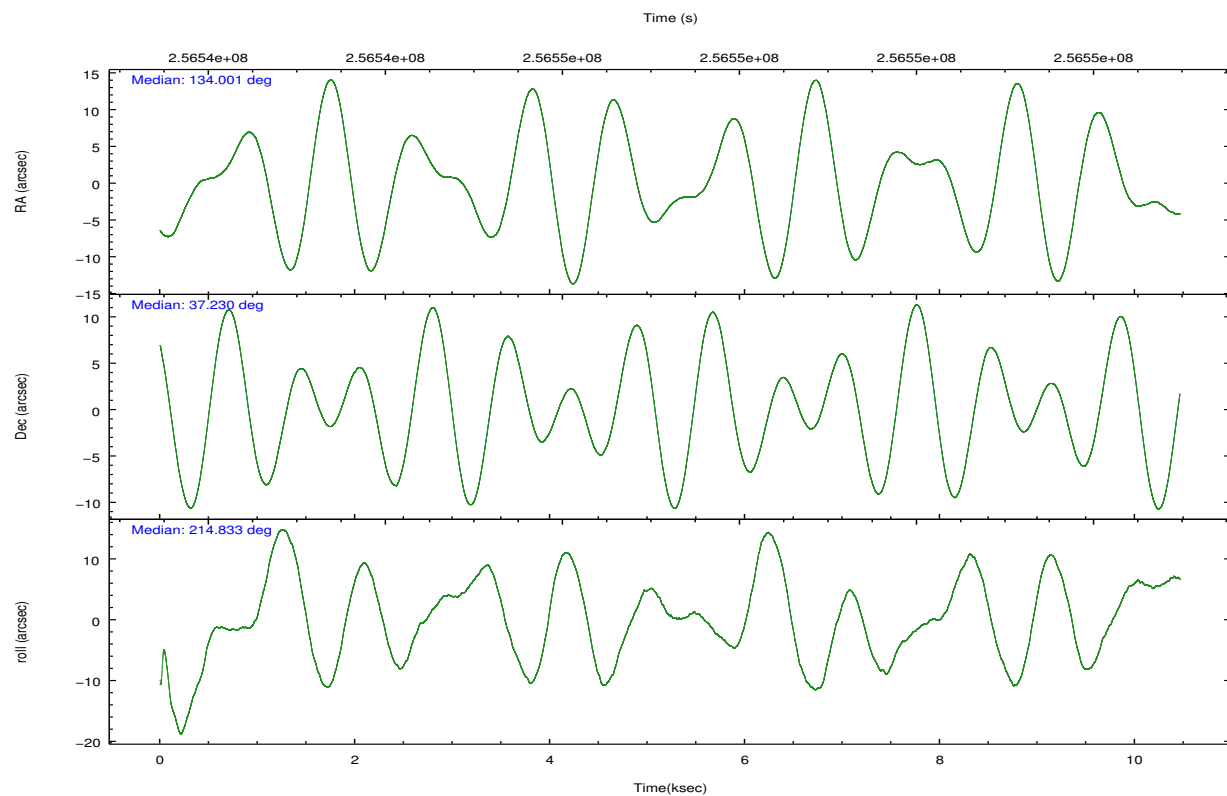
	ccd 2	ccd 3	ccd 5	ccd 6	ccd 7	ccd 8		ccd 2	ccd 3	ccd 5	ccd 6	ccd 7	ccd 8
level 1 events	100284	92914	153052	102444	136505	128621	grade 0 events	7643	7615	9524	7216	5363	11422
rejected events	86338	79102	84607	87994	80614	99228		7%	8%	6%	7%	3%	8%
rejected %	86%	85%	55%	85%	59%	77%	grade 1 events	74	61	228	60	124	103
								0%	0%	0%	0%	0%	0%
							grade 2 events	2640	2438	21870	2894	11806	6566
								2%	2%	14%	2%	8%	5%
							grade 3 events	1252	1214	2891	1260	5118	3056
								1%	1%	1%	1%	3%	2%
							grade 4 events	1134	1224	2604	1260	4983	2823
								1%	1%	1%	1%	3%	2%
							grade 5 events	3797	4328	10938	4453	12492	5869
								3%	4%	7%	4%	9%	4%
							grade 6 events	2129	2200	36873	2687	32732	7588
								2%	2%	24%	2%	23%	5%
							grade 7 events	81615	73834	68124	82614	63887	91194
								81%	79%	44%	80%	46%	70%

2.2 Compared Parameters

Parameter	Planned	Actual	Parameter	Planned	Actual
Instrument	ACIS	ACIS	Obspar format version number	7	7
Detector	ACIS-235678	ACIS-235678	Obspar file type	PREDICTED	ACTUAL
Grating	NONE	NONE	Obspar update status	NONE	UPDATED
Data mode	FAINT	FAINT	Number of optional ACIS chips dropped	0	0
Observation mode	POINTING	POINTING	On-chip summing requested	N	N
[deg] Pointing RA	134.015397	134.0012212532486	Subarray requested	NONE	NONE
[deg] Pointing Dec	37.254795	37.22991637980508	Alternating exposures requested	N	N
[deg] Pointing Roll	214.671239	214.8364513591781	[s] Primary exposure time	0.000000	3.2
[mm] SIM focus pos	-0.684267	-0.6828225247311905			
[mm] SIM defocus	0	0.001444936568705701			
[mm] SIM translation stage pos	-190.132523	-190.1425803651734			
[mm] SIM translation stage offset	0	0.01005778216563158			
[s] Observation start time (MET)	256542170.184000	256540676.60516			
Observation start date	2006-02-17T05:41:45	2006-02-17T05:17:56			
[s] Observation end time (MET)	256552452.184000	256552678.33072			
Observation end date	2006-02-17T08:33:07	2006-02-17T08:37:58			
Read mode	TIMED	TIMED			

2.3 Aspect



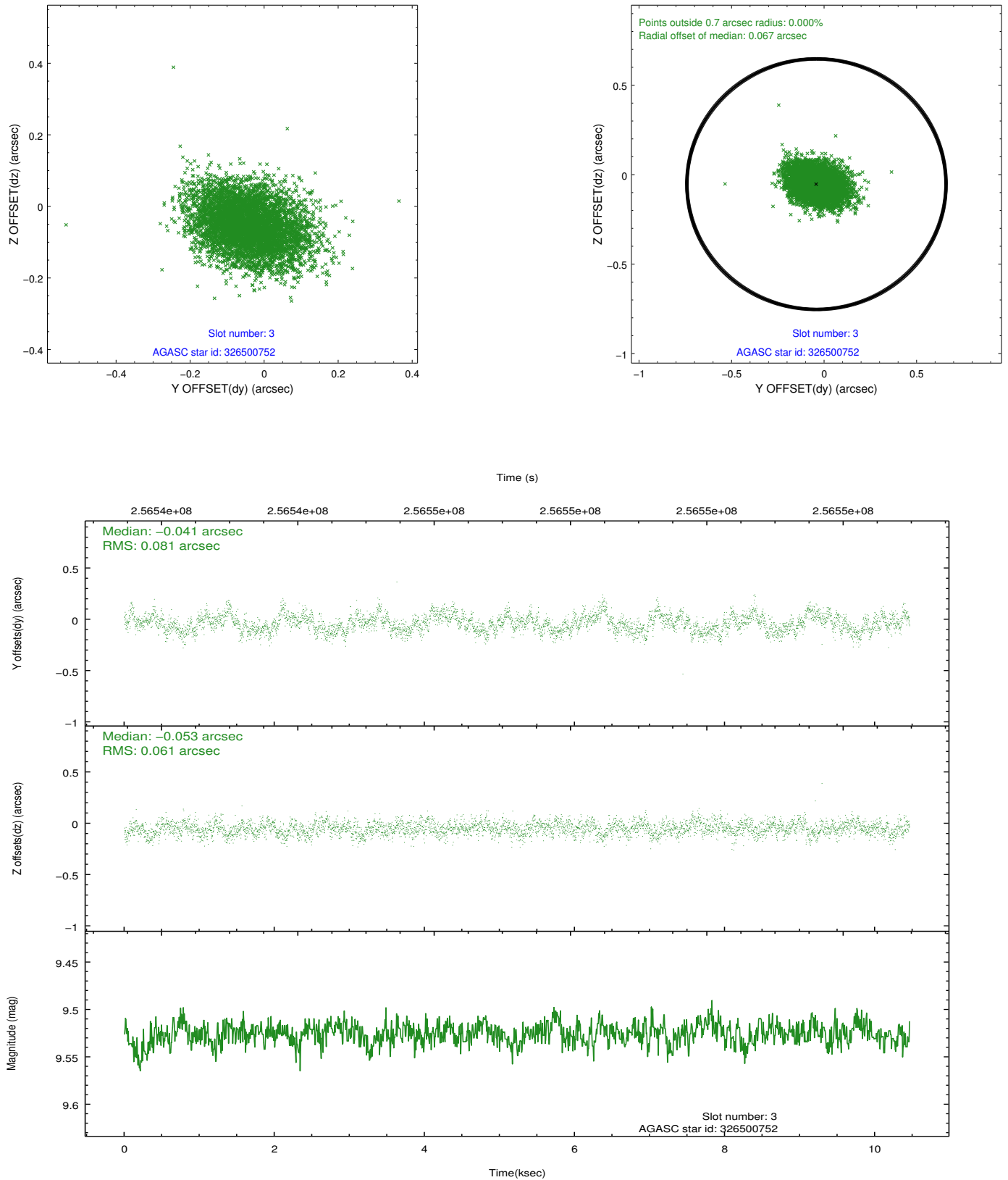


Slot Statistics

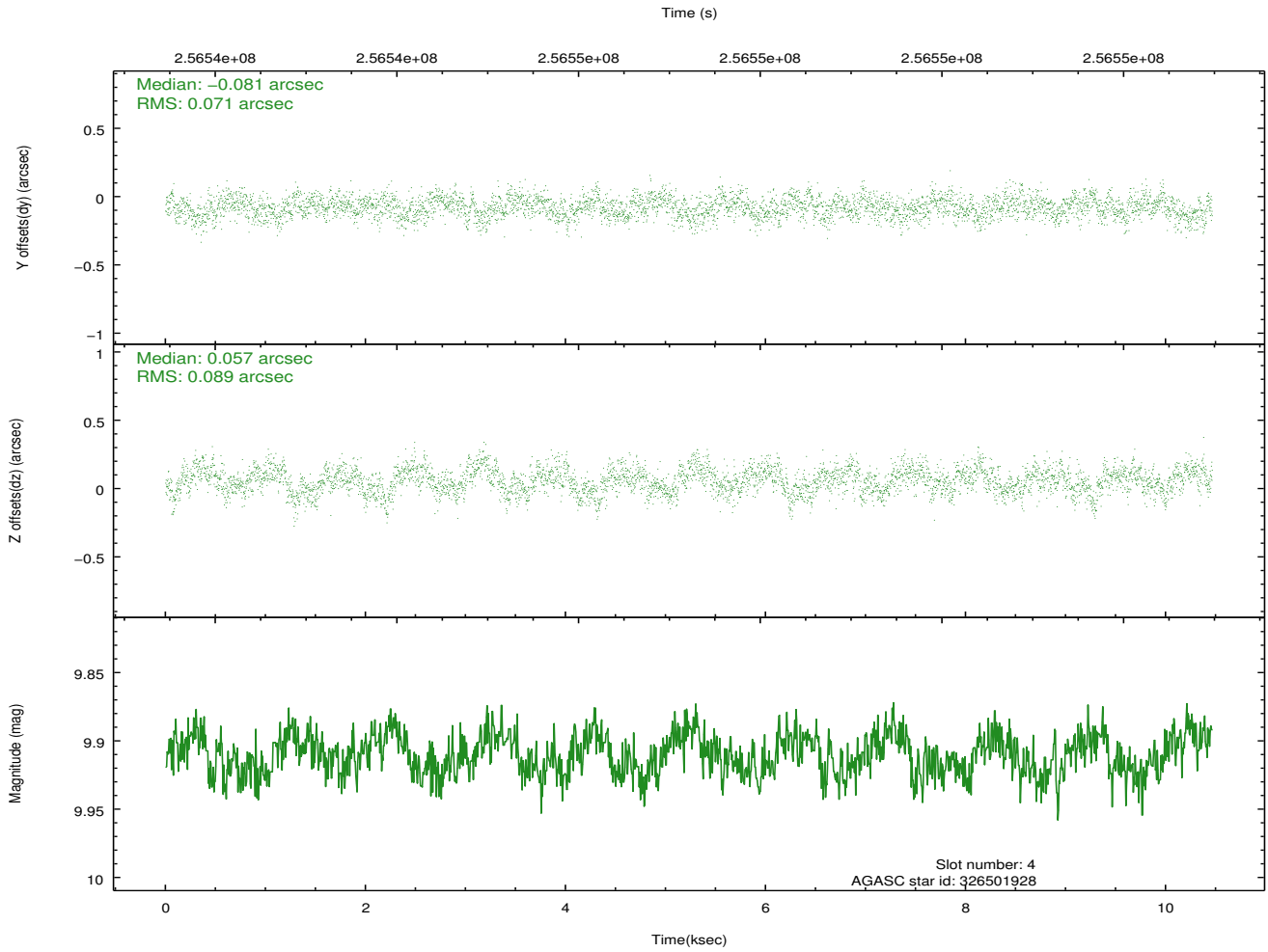
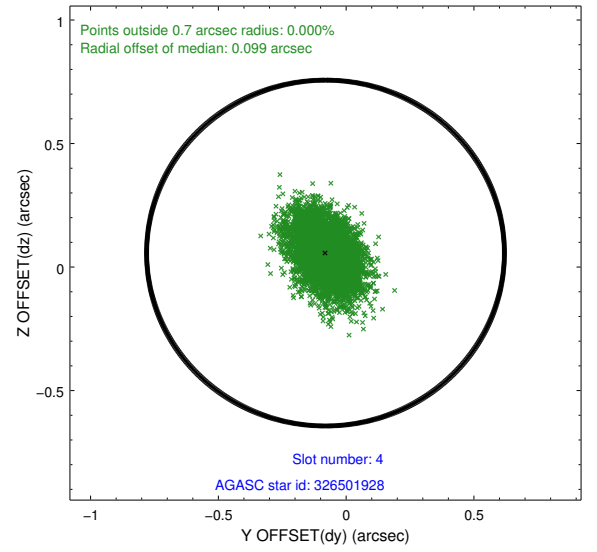
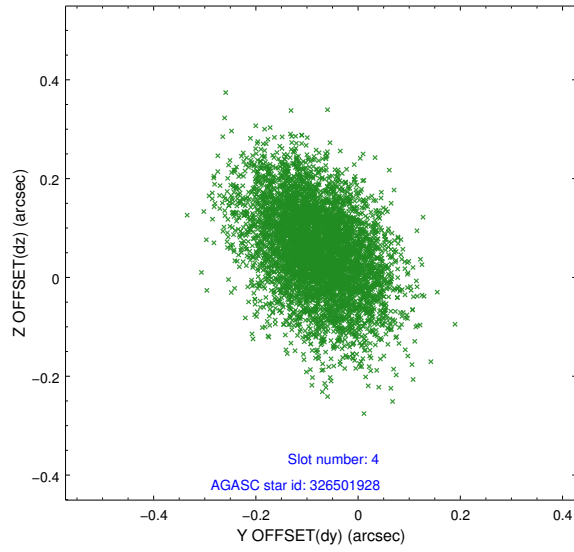
slot	status	id	mag	n_pts	med_dy	med_dz	dr1	dr2	ra	dec	mean_y	mean_z
0	FID	ACIS-S-2	7.11	2551	-0.032	-0.026	0.010	0.016	0.000000	0.000000	-762.28	-1732.94
1	FID	ACIS-S-4	7.20	2552	0.149	0.022	0.007	0.012	0.000000	0.000000	2150.94	175.08
2	FID	ACIS-S-5	7.23	2552	-0.148	0.012	0.009	0.015	0.000000	0.000000	-1814.60	169.30
3	GUIDE	326500752	9.53	5100	-0.041	-0.053	0.108	0.175	133.992015	36.802696	981.21	1300.43
4	GUIDE	326501928	9.91	5091	-0.081	0.057	0.121	0.201	134.372742	37.201613	-734.56	739.23
5	GUIDE	326502456	9.67	5097	0.185	0.210	0.135	0.243	133.439512	37.413962	1025.63	-1411.50
6	GUIDE	326507744	7.23	5105	-0.104	-0.081	0.066	0.107	133.297987	37.070277	2069.41	-632.02
7	GUIDE	326510800	9.01	5100	0.043	-0.123	0.078	0.128	133.701302	36.782455	1711.73	882.15

2.4 Star Slots

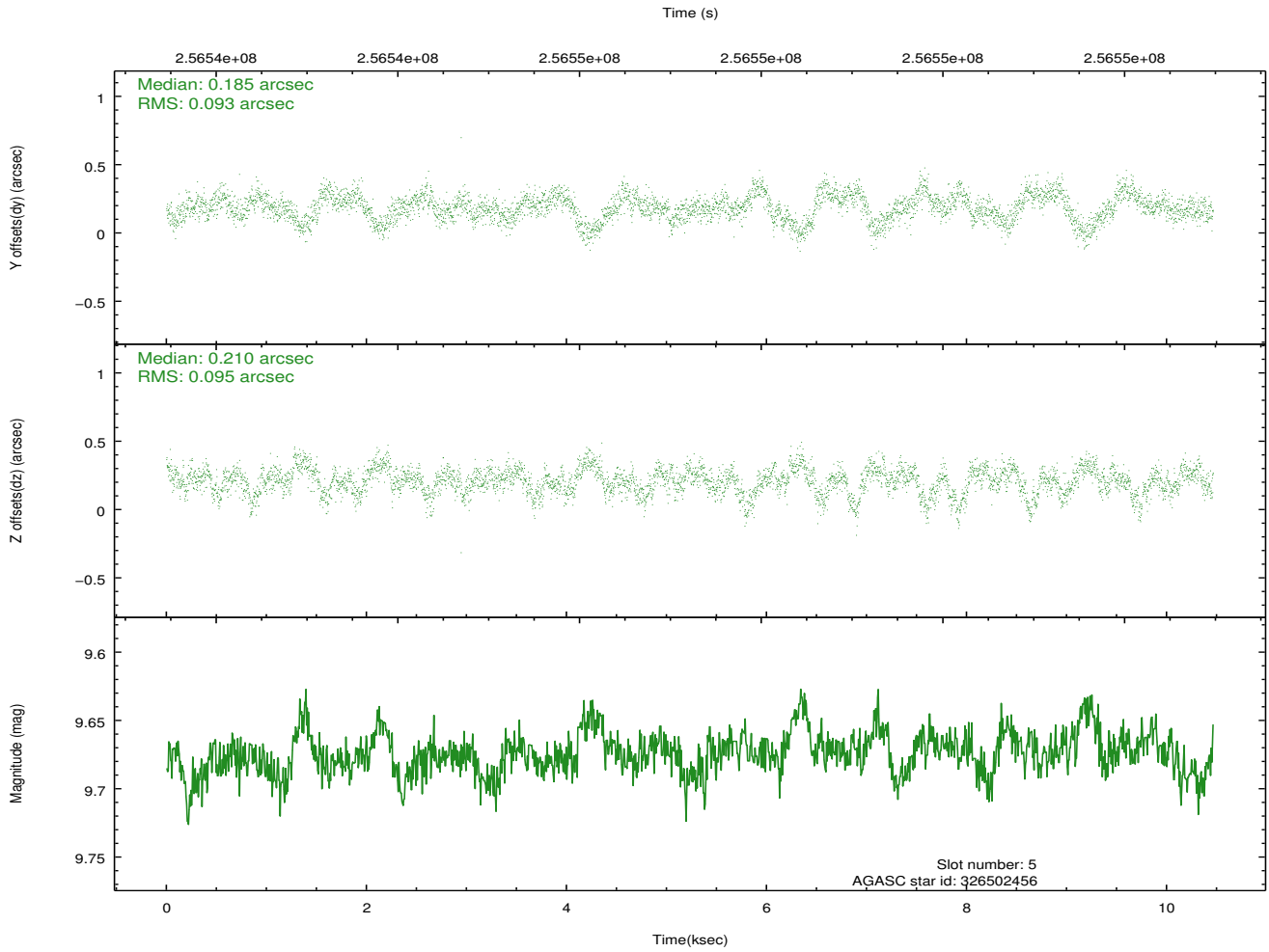
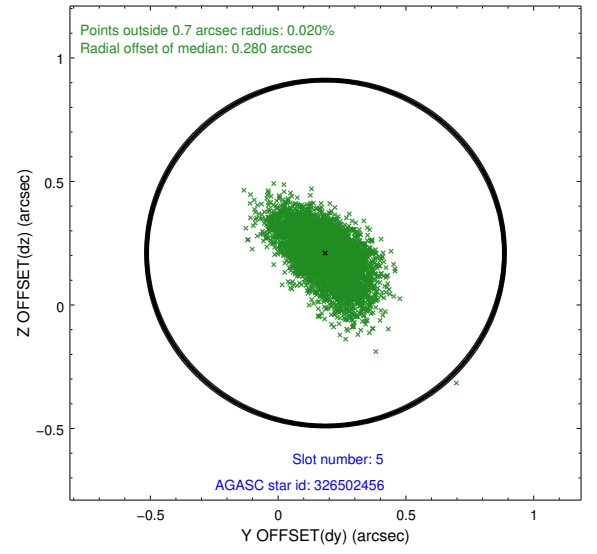
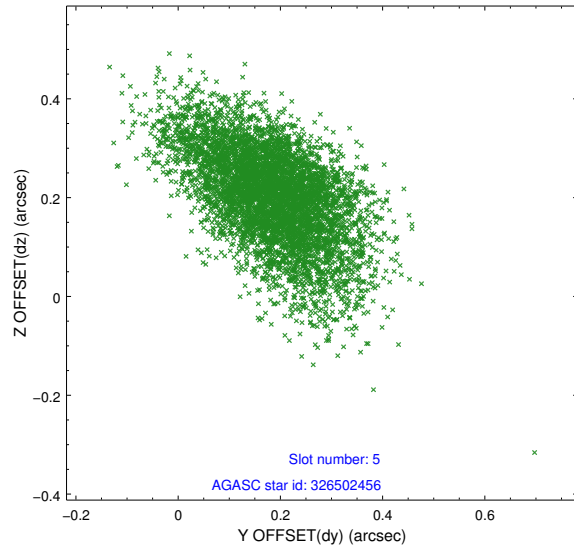
2.4.1 Slot 3



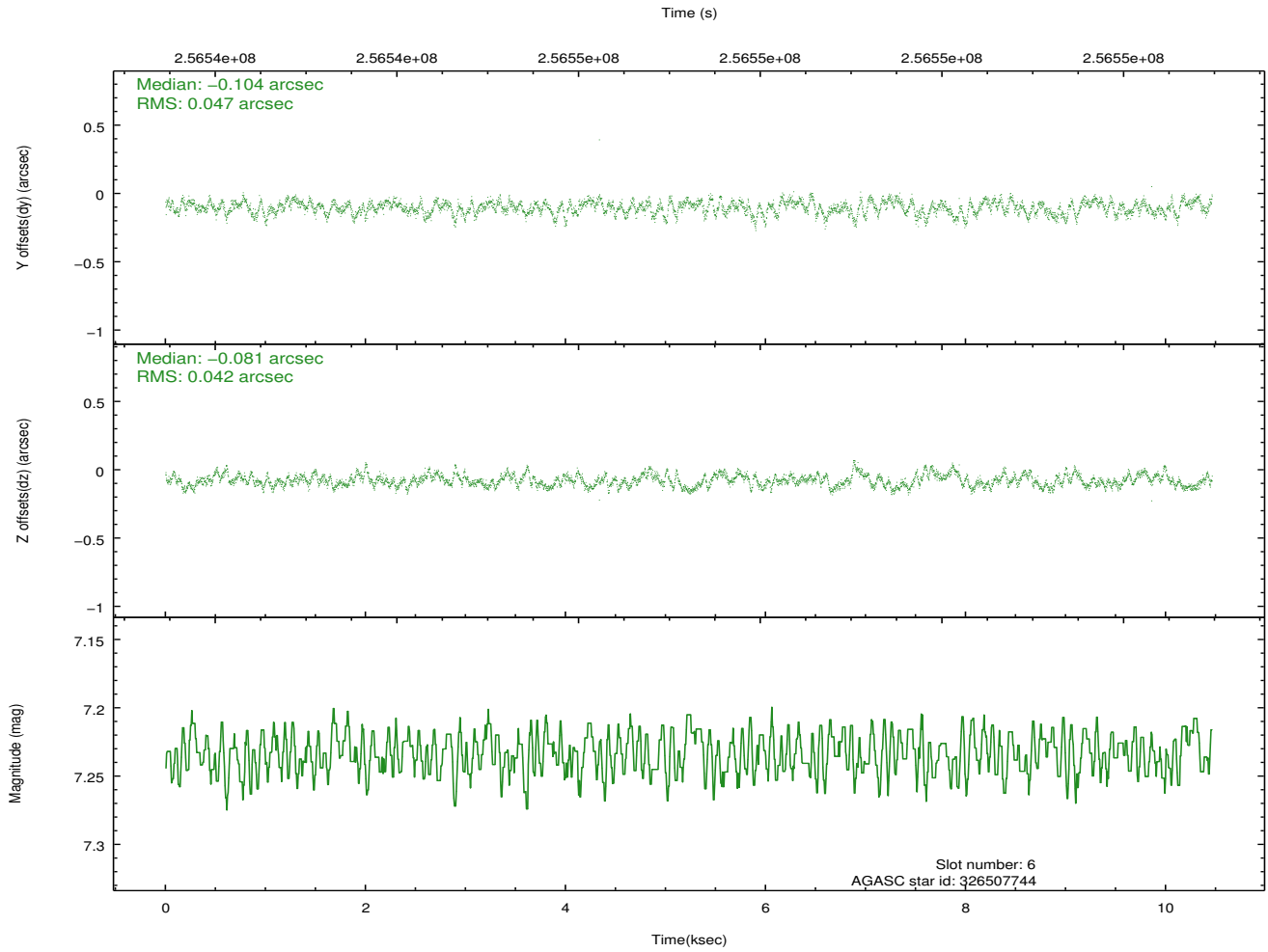
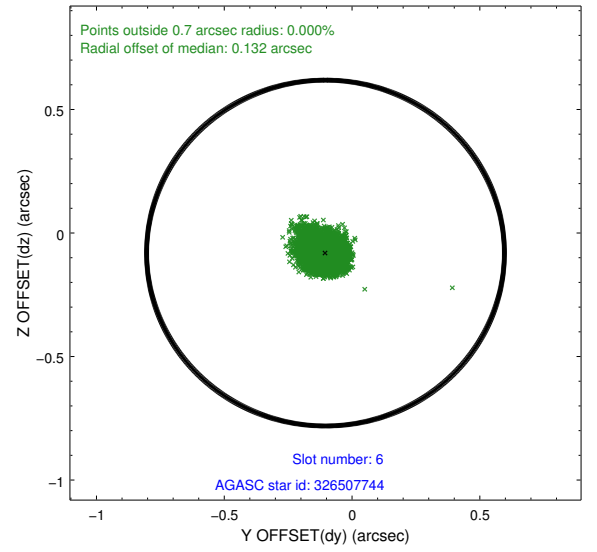
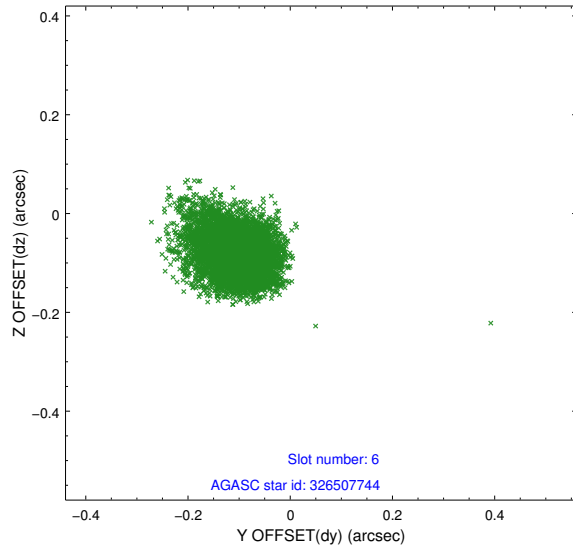
2.4.2 Slot 4



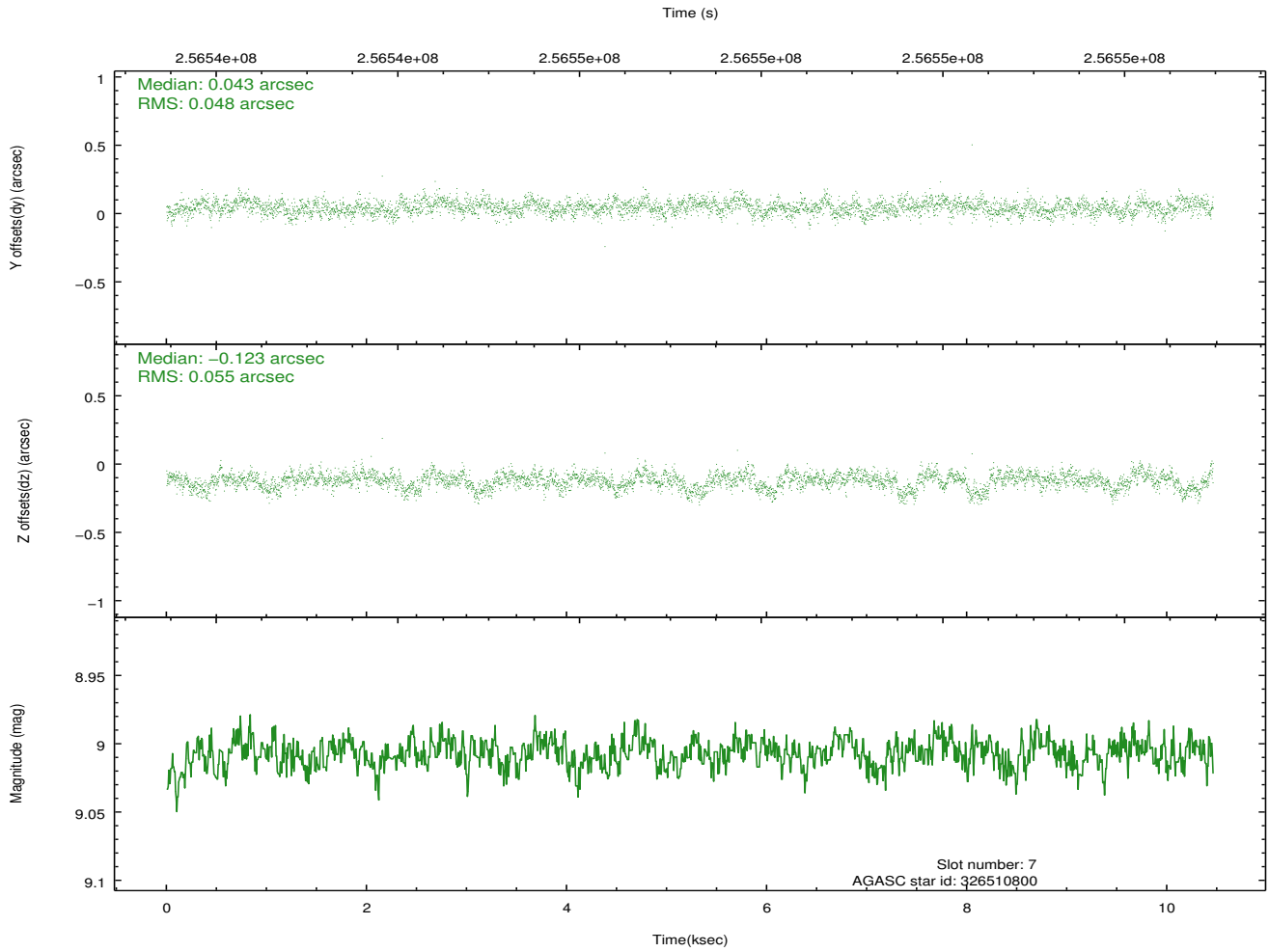
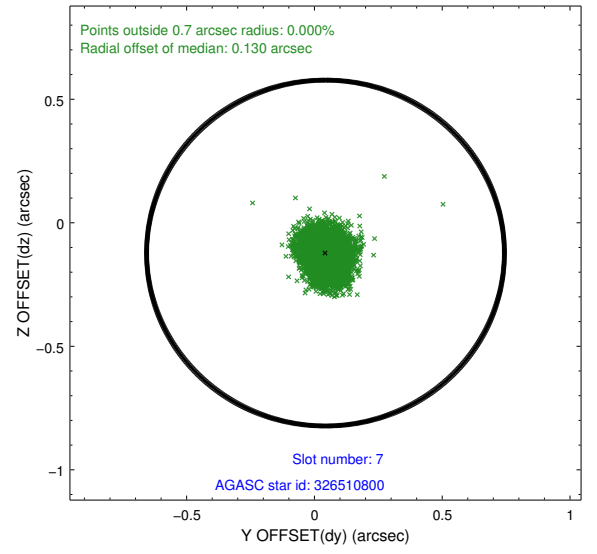
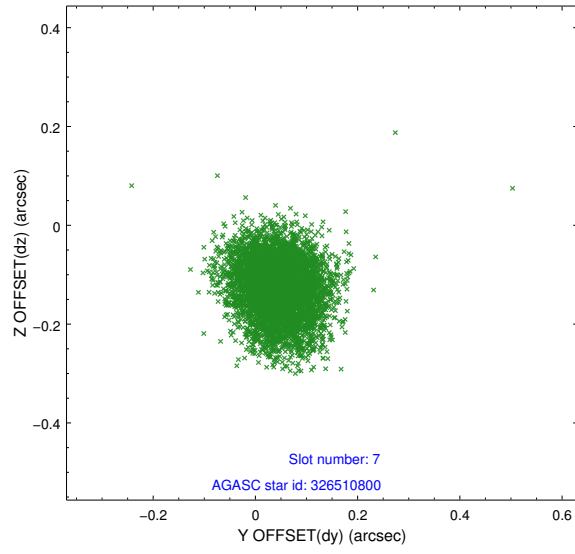
2.4.3 Slot 5



2.4.4 Slot 6

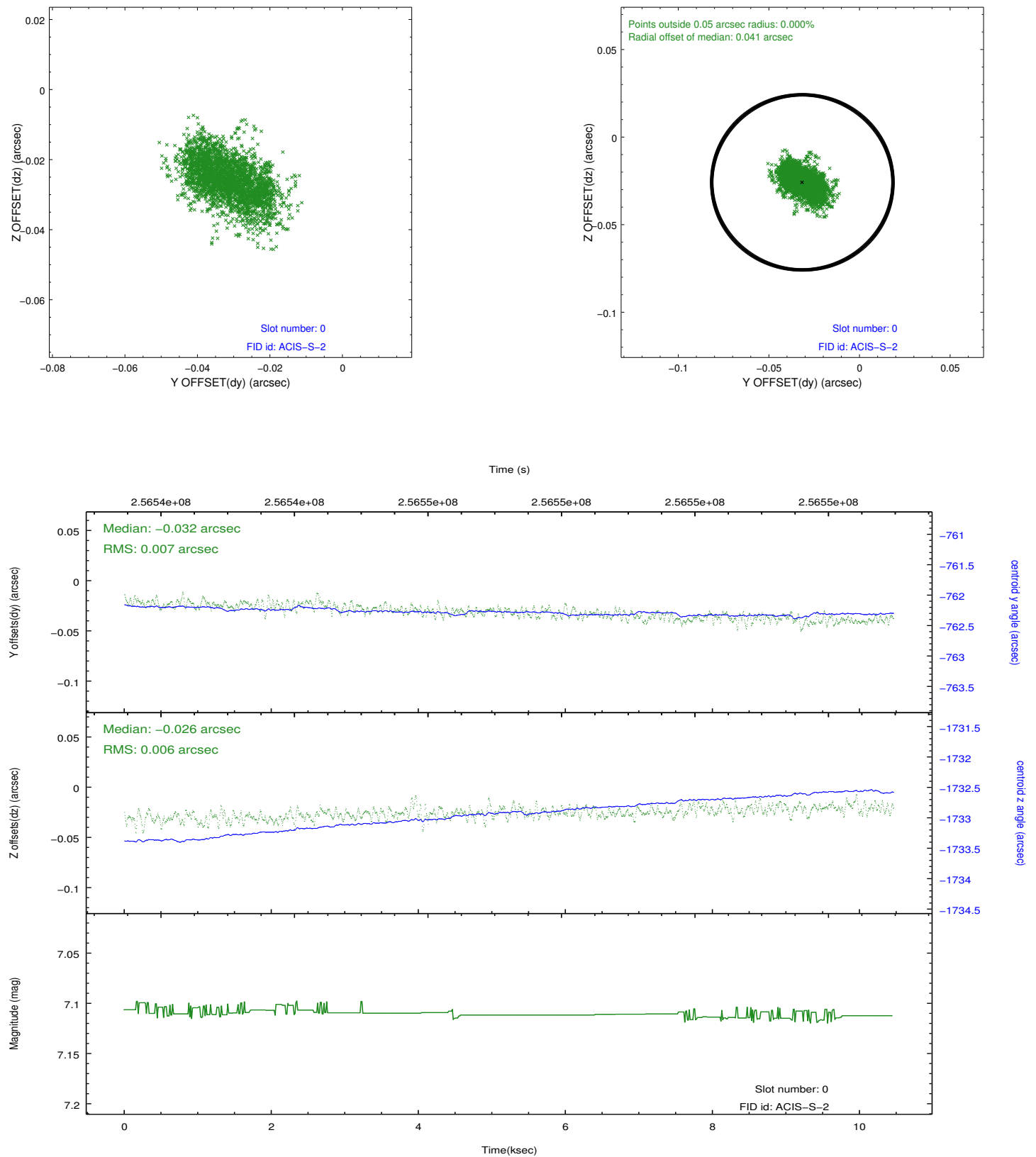


2.4.5 Slot 7

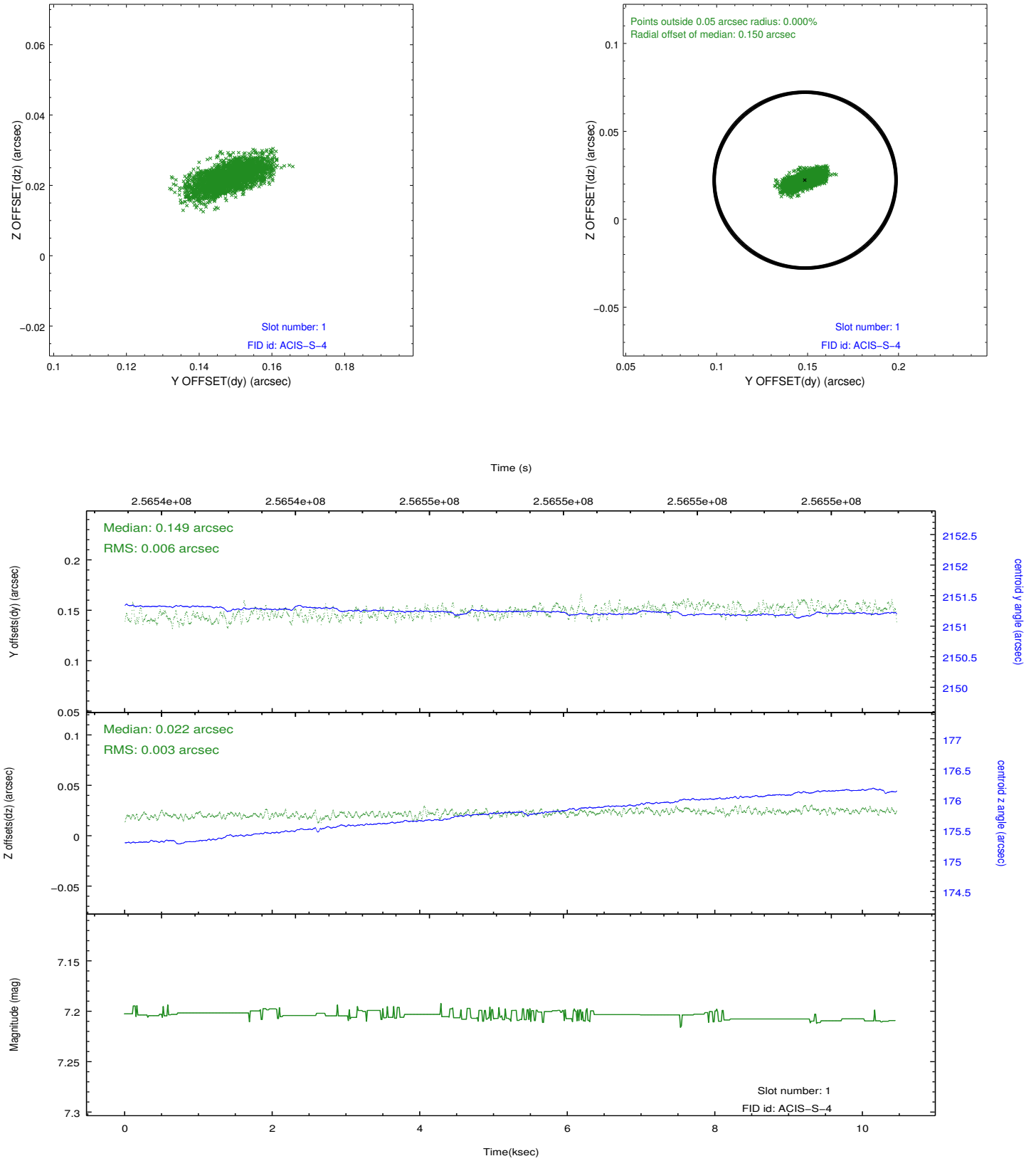


2.5 FID Slots

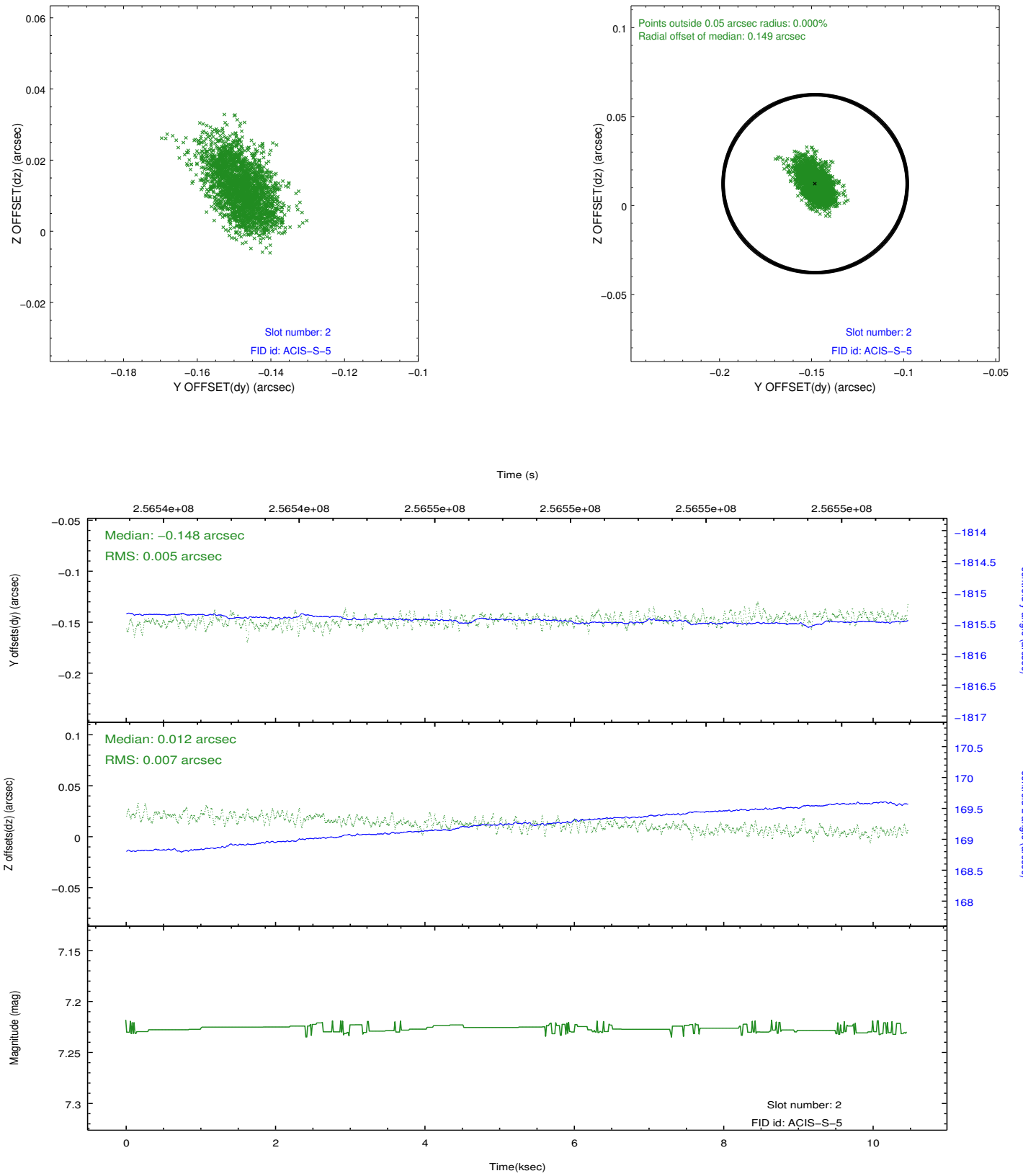
2.5.1 Slot 0



2.5.2 Slot 1



2.5.3 Slot 2



A Summary

A.1 Status

V&V Scientist	Jen Lauer
V&V Date (YYYY-MM-DD)	2012.03.27
V&V Edition	1
V&V Disposition and Status	OK
V&V Charge Time	10.4575999

A.2 Comments