

# V&V Reference Report

## L2 ASCDS Version : 8.4.3

Observation 6798 - L2 Version 2  
Chandra X-Ray Center

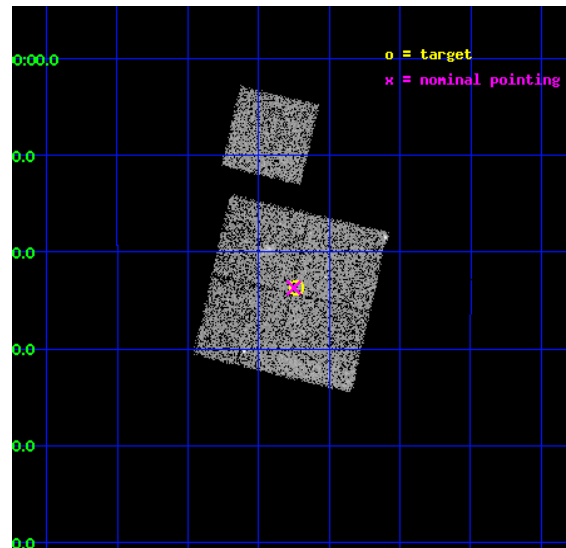
L2 Processing Date : Mar 24 2012

## Contents

<b>1</b>	<b>Front</b>	<b>2</b>
<b>2</b>	<b>OBI</b>	<b>3</b>
2.1	OBI . . . . .	3
2.1.1	Images . . . . .	3
2.1.2	Bias . . . . .	3
2.1.3	Parameters . . . . .	4
2.1.4	Events . . . . .	4
2.2	Compared Parameters . . . . .	5
2.3	Aspect . . . . .	6
2.4	Star Slots . . . . .	9
2.4.1	Slot 3 . . . . .	9
2.4.2	Slot 4 . . . . .	10
2.4.3	Slot 5 . . . . .	11
2.4.4	Slot 6 . . . . .	12
2.4.5	Slot 7 . . . . .	13
2.5	FID Slots . . . . .	14
2.5.1	Slot 0 . . . . .	14
2.5.2	Slot 1 . . . . .	15
2.5.3	Slot 2 . . . . .	16
<b>A</b>	<b>Summary</b>	<b>17</b>
A.1	Status . . . . .	17
A.2	Comments . . . . .	17

# 1 Front

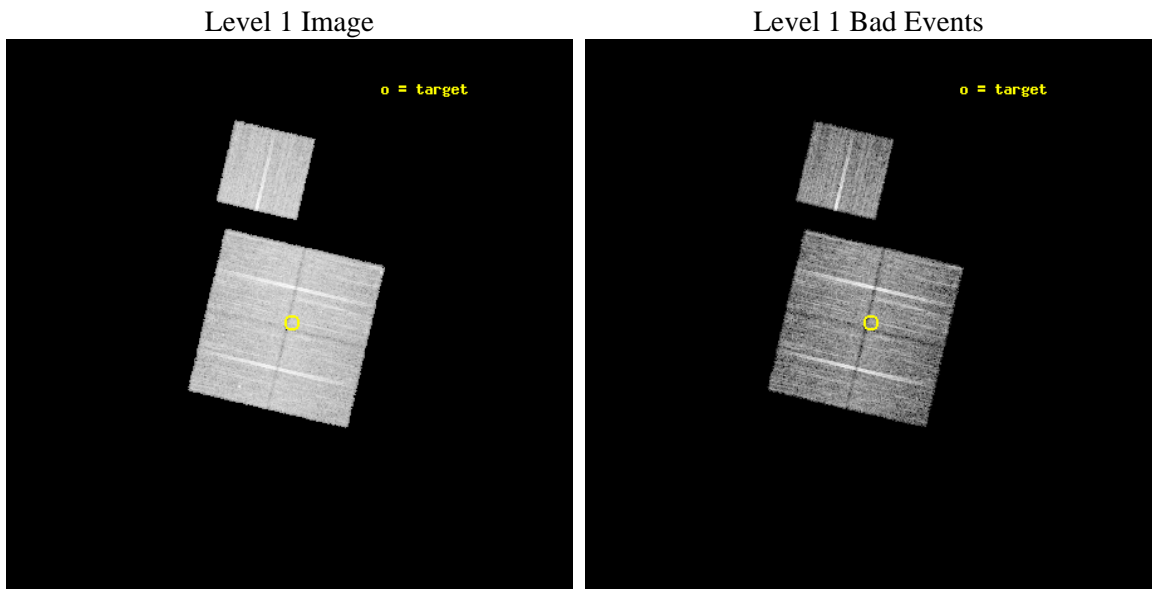
seq_num	701216	Sequence number
obs_id	6798	Observation id
title	AGN in the Outskirts of Low-Redshift Clusters of Galaxies	Proposal
observer	Prof. Paul Martini	Principal investigator
object	Abell754-P6	Source name
dtcycle	0	&#160
cycle	P	events from which exps? Prim/Second/Both
ra_targ	137.557917	Observer's specified target RA [deg]
dec_targ	-9.394167	Observer's specified target Dec [deg]
ra_nom	137.56259155423	Nominal RA [deg]
dec_nom	-9.3949622423974	Nominal Dec [deg]
roll_nom	13.224170383757	Nominal Roll [deg]
revision	2	Processing version of data
ontime	10164.899980426	Sum of GTIs [s]
livetime	10032.088078891	Livetime [s]
ontime0	10155.477049679	Sum of GTIs [s]
ontime1	10164.899980426	Sum of GTIs [s]
ontime2	10161.759000182	Sum of GTIs [s]
ontime3	10164.899980426	Sum of GTIs [s]
ontime6	10161.758990258	Sum of GTIs [s]
l2events	30987	Number of level 2 events



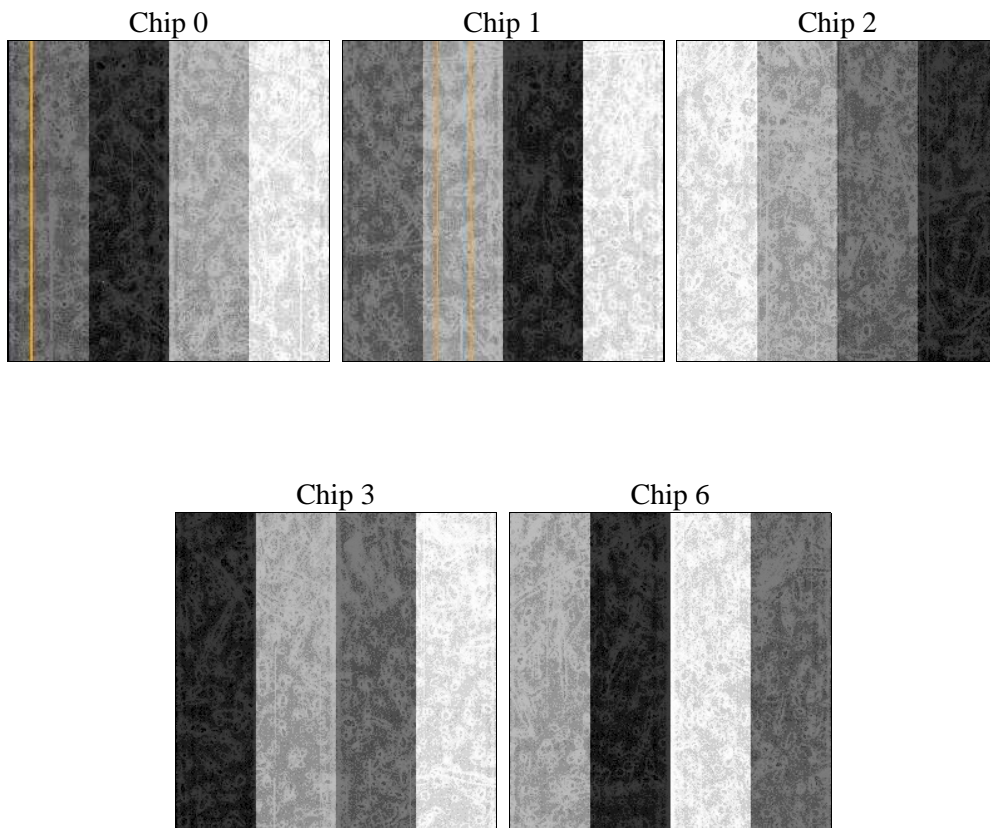
## 2 OBI

### 2.1 OBI

#### 2.1.1 Images



#### 2.1.2 Bias



### 2.1.3 Parameters

obi_num	0	Obi number	sched_exp_time	10000.000000	[s] Scheduled observation exposure time
ascdsver	8.4.3.1	Processing system revision	ontime	10164.899980426	Sum of GTIs [s]
caldbver	4.4.8	&#160	ontime0	10155.477049679	Sum of GTIs [s]
date	2012-03-24T06:20:27	Date and time of file creation	ontime1	10164.899980426	Sum of GTIs [s]
revision	2	Processing version of data	ontime2	10161.759000182	Sum of GTIs [s]
			ontime3	10164.899980426	Sum of GTIs [s]
			ontime6	10161.758990258	Sum of GTIs [s]
			l1events	355694	Number of level 1 events

### 2.1.4 Events

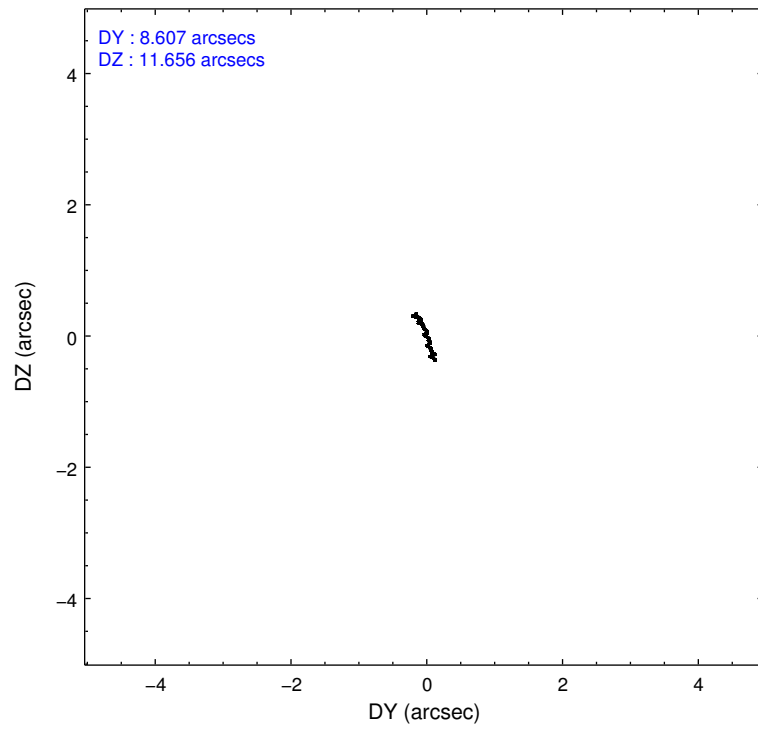
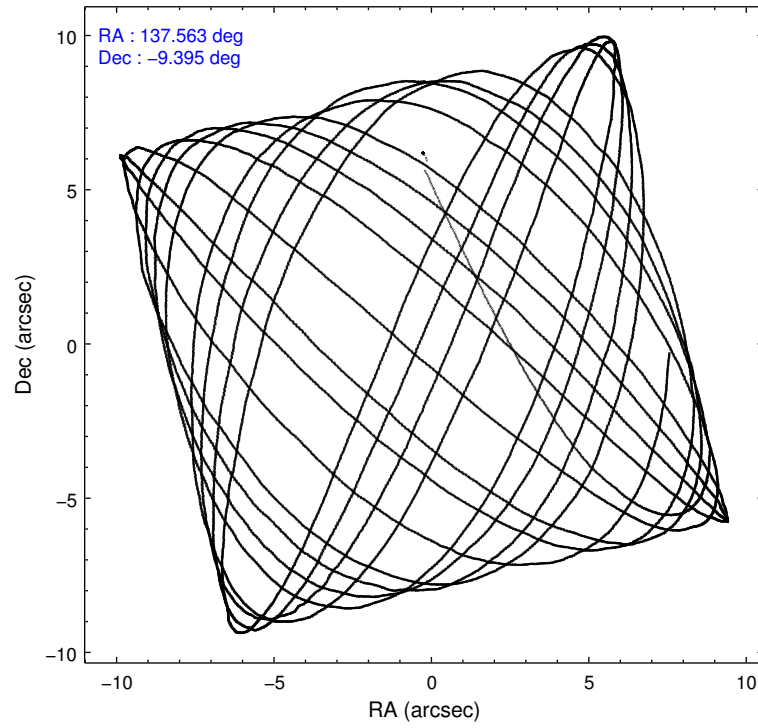
	ccd 0	ccd 1	ccd 2	ccd 3	ccd 6
level 1 events	68087	65368	77437	72916	71886
rejected events	60905	57071	70123	65766	64690
rejected %	89%	87%	90%	90%	89%

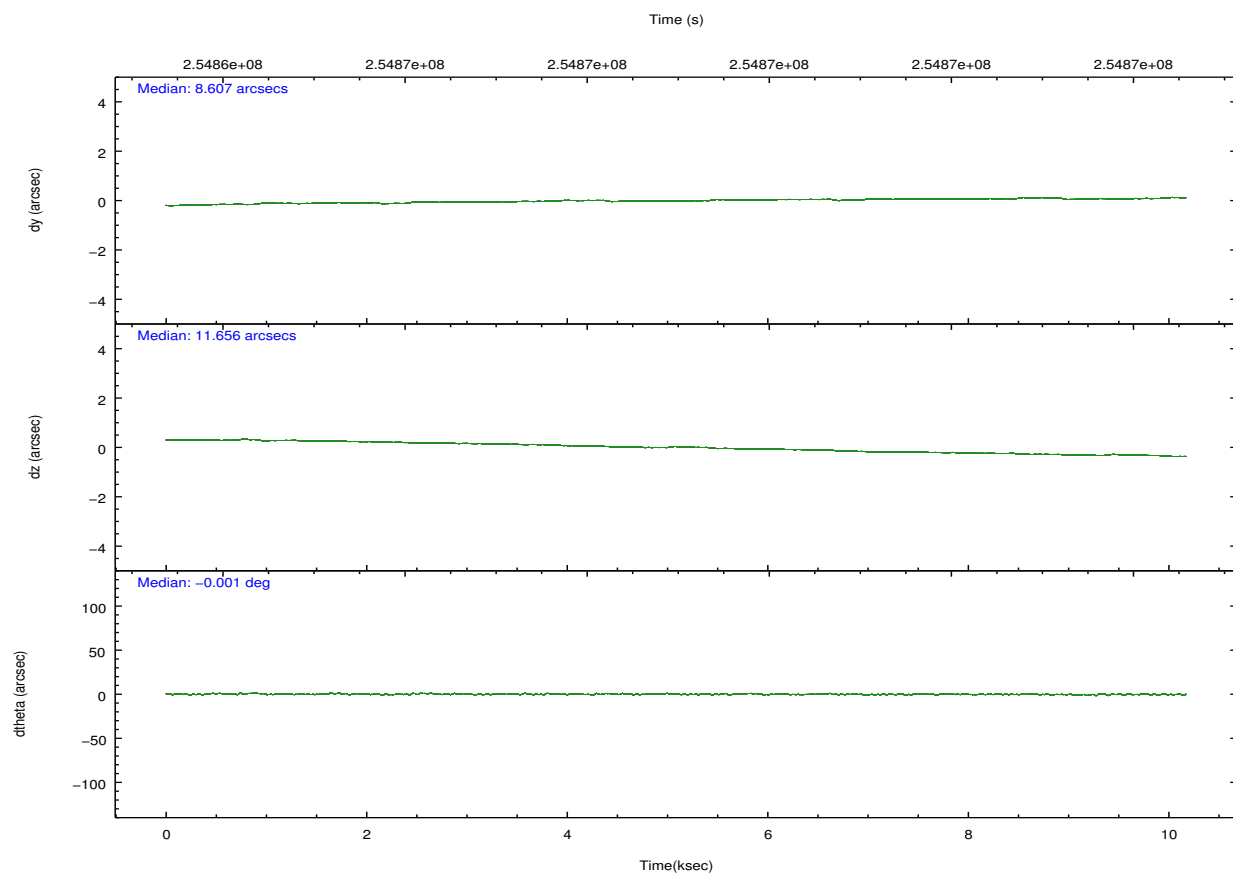
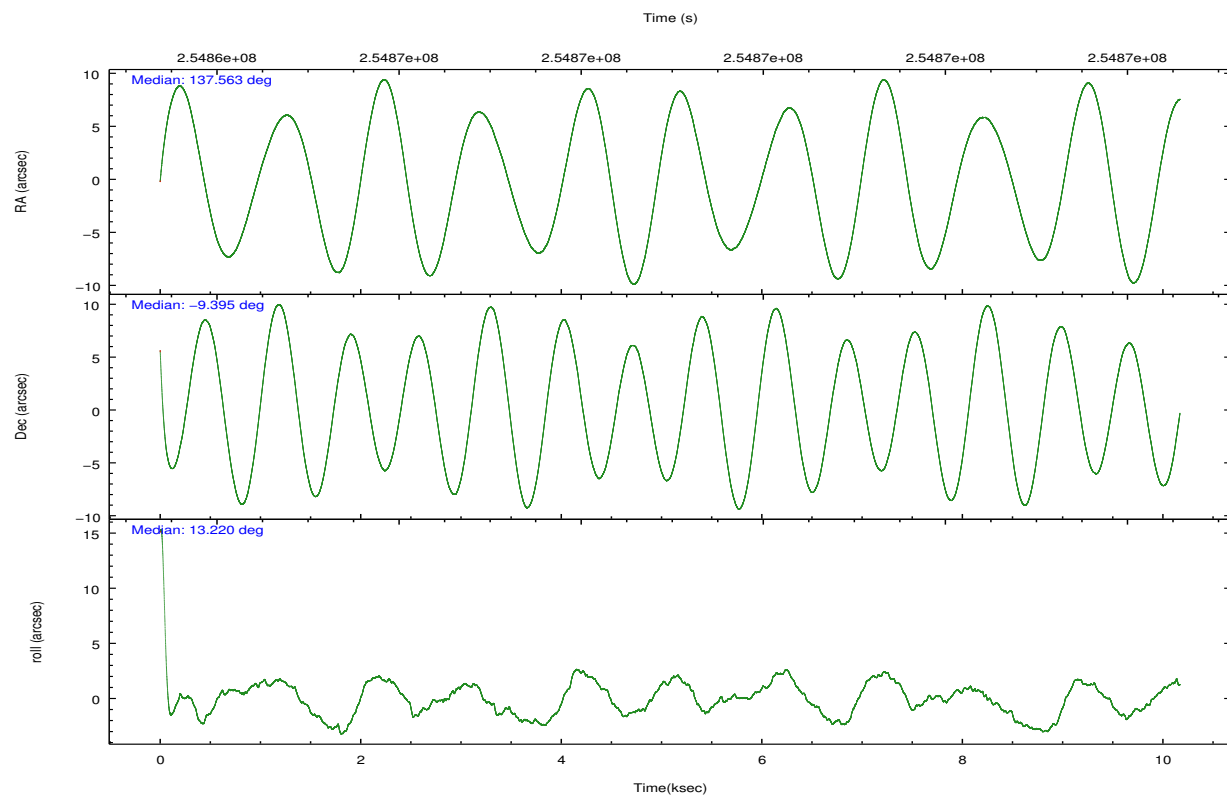
	ccd 0	ccd 1	ccd 2	ccd 3	ccd 6
grade 0 events	2685	3199	2839	2730	2509
	3%	4%	3%	3%	3%
grade 1 events	33	37	37	45	39
	0%	0%	0%	0%	0%
grade 2 events	1768	1809	1703	1496	1518
	2%	2%	2%	2%	2%
grade 3 events	777	869	787	867	811
	1%	1%	1%	1%	1%
grade 4 events	746	904	758	775	862
	1%	1%	0%	1%	1%
grade 5 events	2313	2682	2261	2855	2733
	3%	4%	2%	3%	3%
grade 6 events	1314	1626	1323	1379	1586
	1%	2%	1%	1%	2%
grade 7 events	58451	54242	67729	62769	61828
	85%	82%	87%	86%	86%

## 2.2 Compared Parameters

Parameter	Planned	Actual	Parameter	Planned	Actual
Instrument	ACIS	ACIS	Obspar format version number	7	7
Detector	ACIS-01236	ACIS-01236	Obspar file type	PREDICTED	ACTUAL
Grating	NONE	NONE	Obspar update status	NONE	UPDATED
Data mode	VFAINT	VFAINT	Number of optional ACIS chips dropped	0	0
Observation mode	POINTING	POINTING	On-chip summing requested	N	N
[deg] Pointing RA	137.542403	137.5625915542326	Subarray requested	NONE	NONE
[deg] Pointing Dec	-9.413788	-9.394962242397378	Alternating exposures requested	N	N
[deg] Pointing Roll	13.012150	13.22417038375702	[s] Primary exposure time	0.000000	3.1
[mm] SIM focus pos	-0.782348	-0.7809083437167272			
[mm] SIM defocus	0	0.001439871863259334			
[mm] SIM translation stage pos	-233.592463	-233.5874344608287			
[mm] SIM translation stage offset	0	-0.005018542100998502			
[s] Observation start time (MET)	254864058.184000	254863000.60229			
Observation start date	2006-01-28T19:33:13	2006-01-28T19:16:40			
[s] Observation end time (MET)	254874058.184000	254874191.55281			
Observation end date	2006-01-28T22:19:53	2006-01-28T22:23:11			
Read mode	TIMED	TIMED			

## 2.3 Aspect



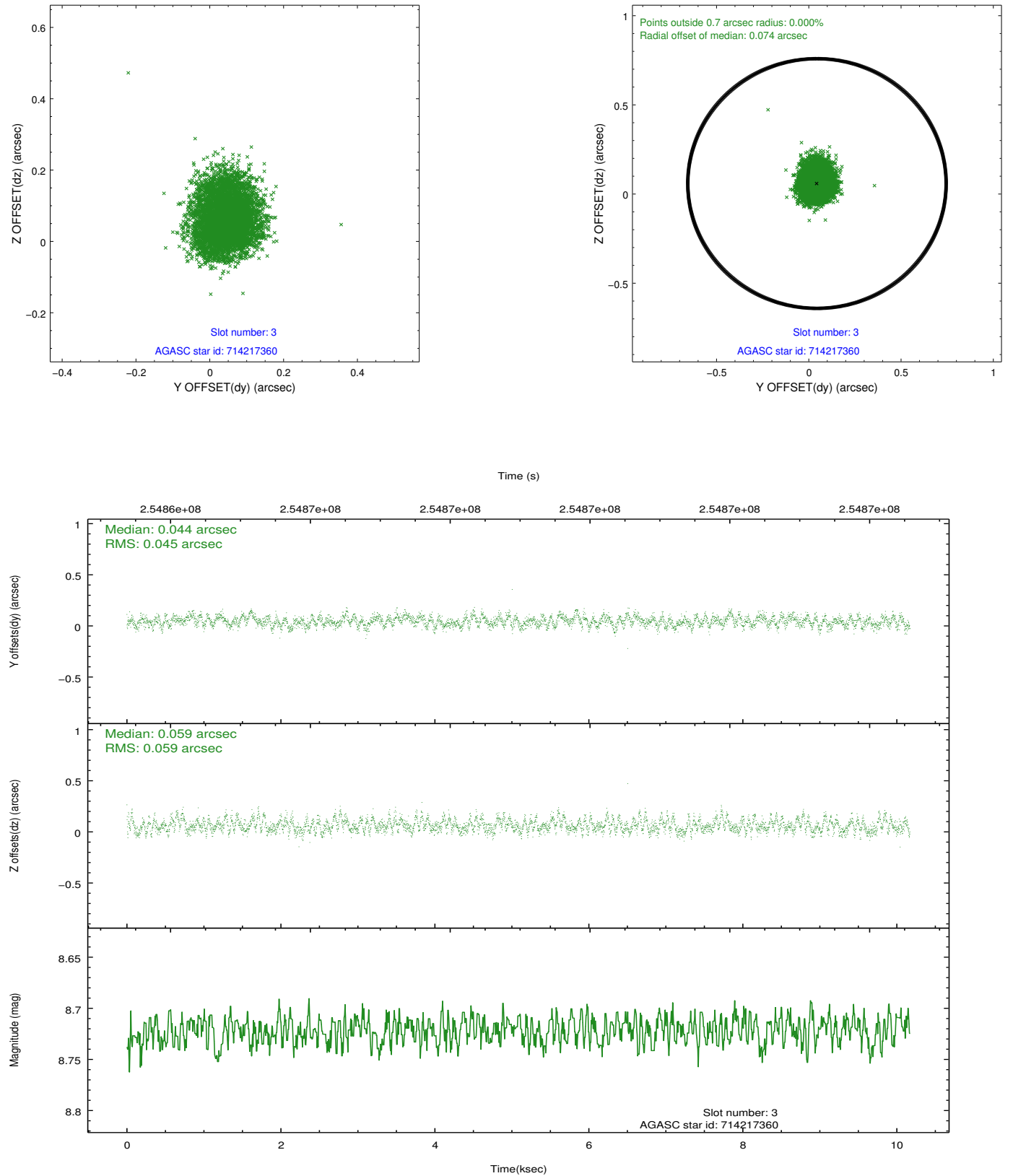


### Slot Statistics

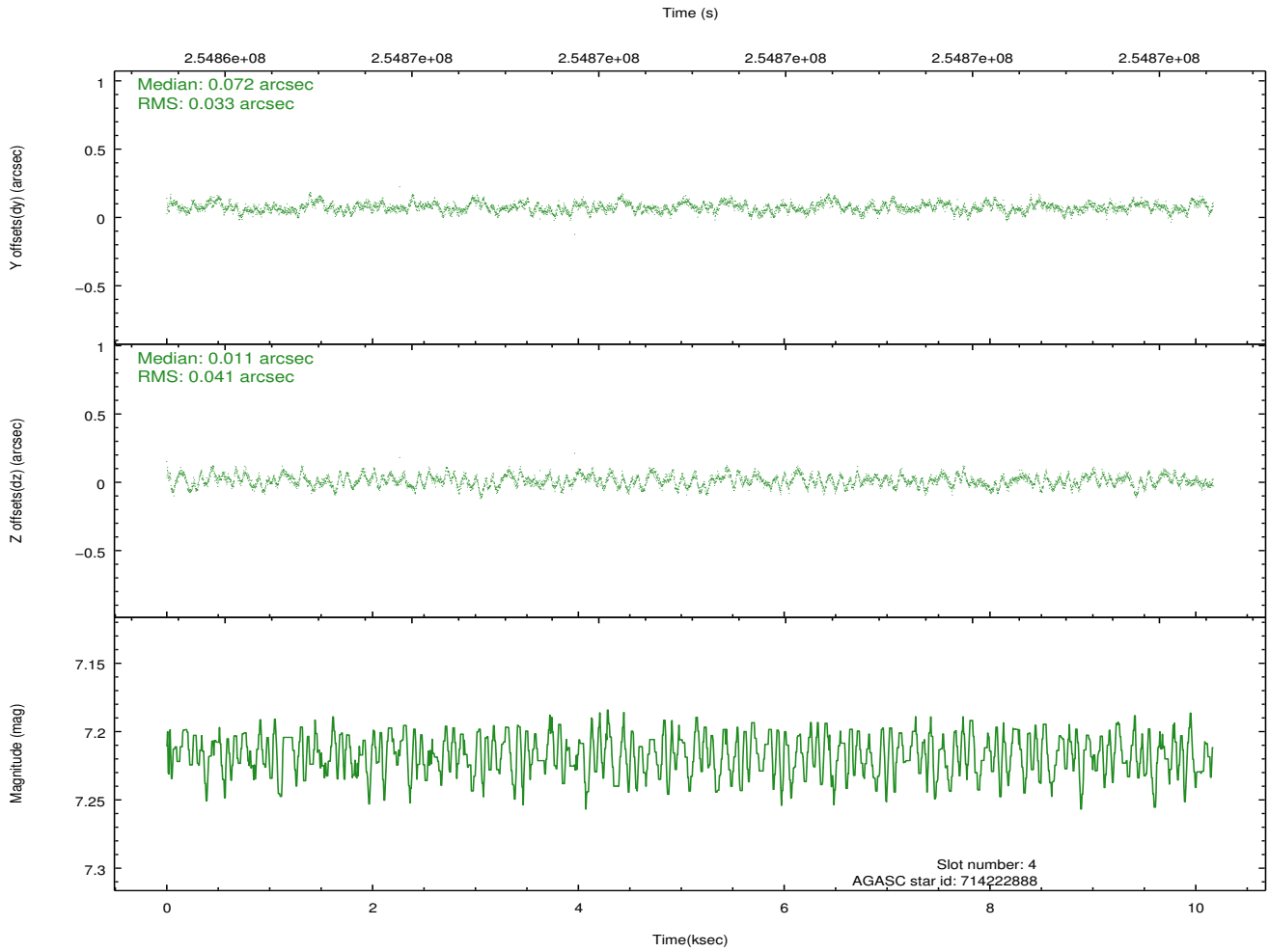
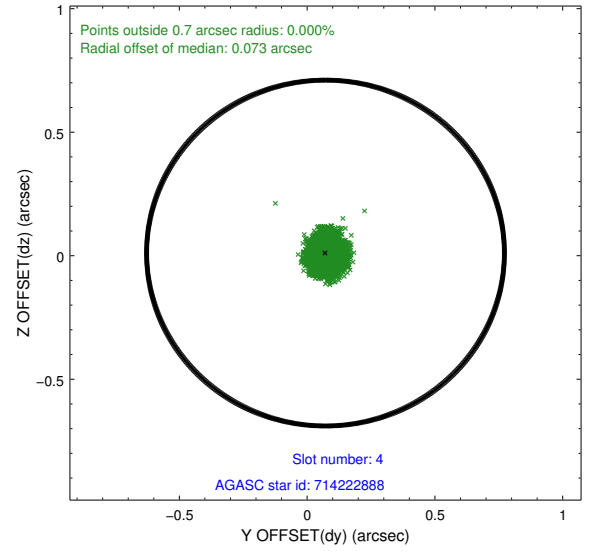
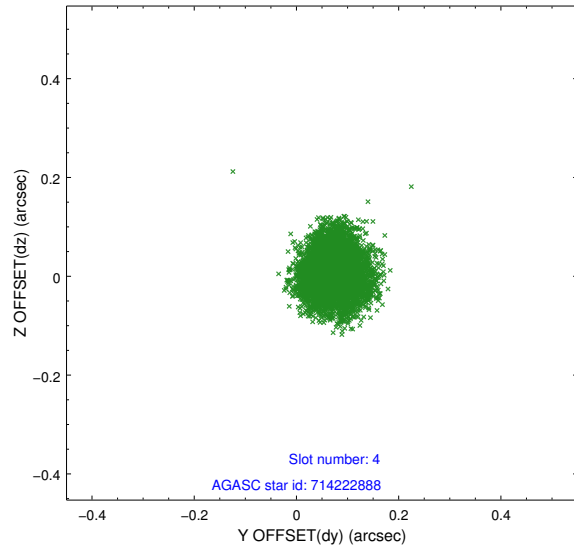
slot	status	id	mag	n_pts	med_dy	med_dz	dr1	dr2	ra	dec	mean_y	mean_z
0	FID	ACIS-I-1	7.24	2481	0.055	-0.024	0.009	0.016	0.000000	0.000000	931.07	-835.21
1	FID	ACIS-I-5	7.22	2481	-0.191	0.065	0.008	0.013	0.000000	0.000000	-1816.95	1062.18
2	FID	ACIS-I-6	7.25	2481	0.044	0.030	0.011	0.017	0.000000	0.000000	396.10	1707.18
3	GUIDE	714217360	8.72	4961	0.044	0.059	0.079	0.123	137.273046	-10.133687	-1513.21	-2310.36
4	GUIDE	714222888	7.22	4962	0.072	0.011	0.057	0.089	137.419411	-9.937881	-849.73	-1740.46
5	GUIDE	713697472	8.76	4957	-0.082	-0.028	0.076	0.121	137.813086	-8.899103	1354.81	1588.13
6	GUIDE	714220096	8.14	4961	0.041	-0.114	0.075	0.119	137.167337	-9.384108	-1273.90	404.12
7	GUIDE	714225240	9.63	4952	-0.077	0.071	0.120	0.195	137.061222	-10.176566	-2279.76	-2292.61

## 2.4 Star Slots

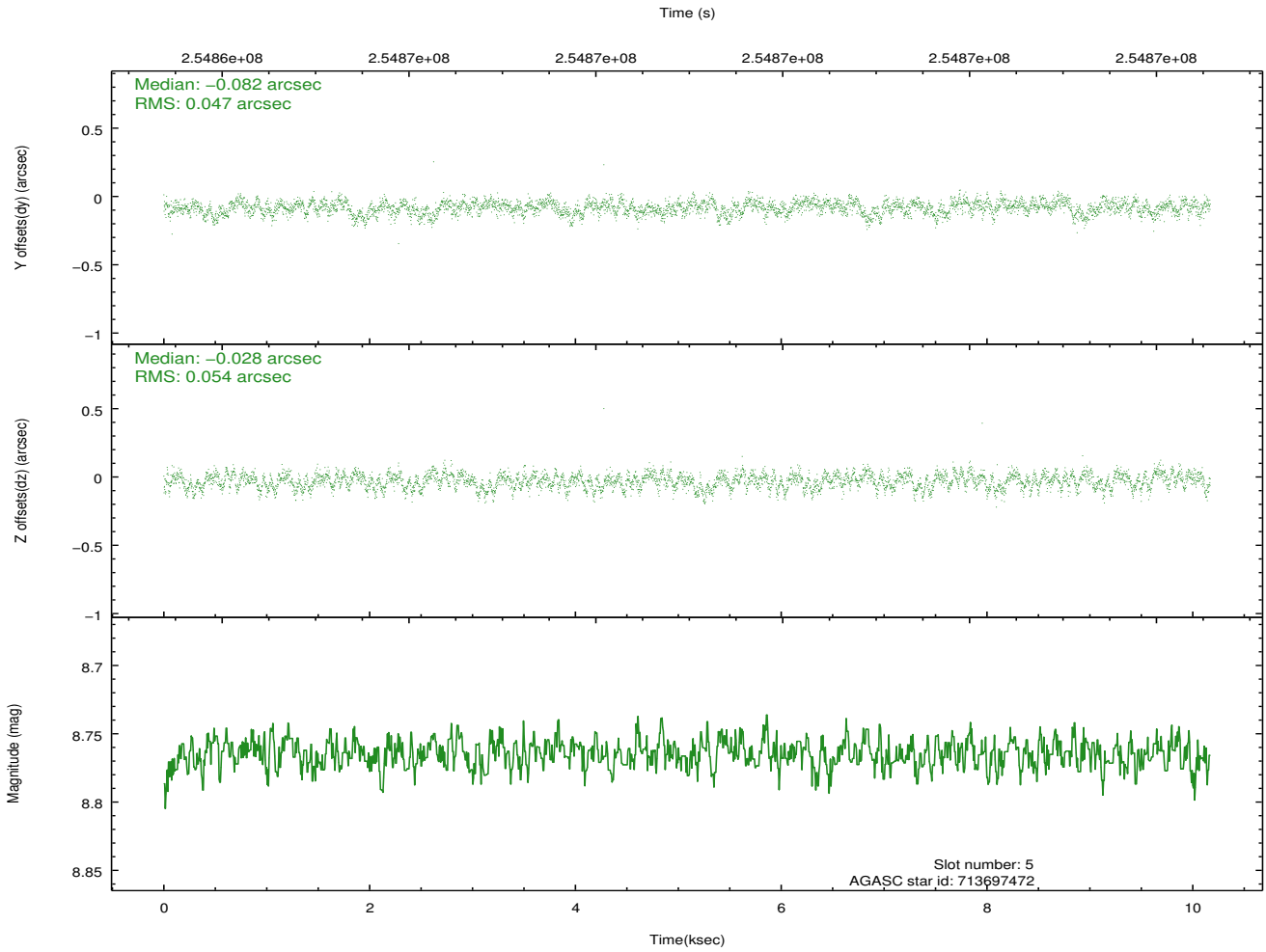
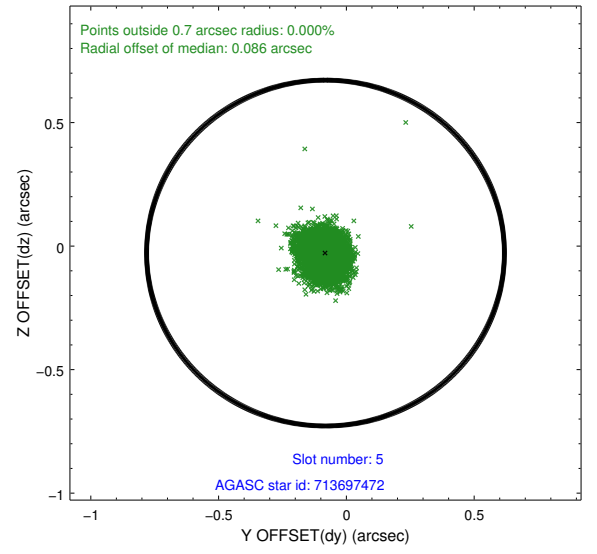
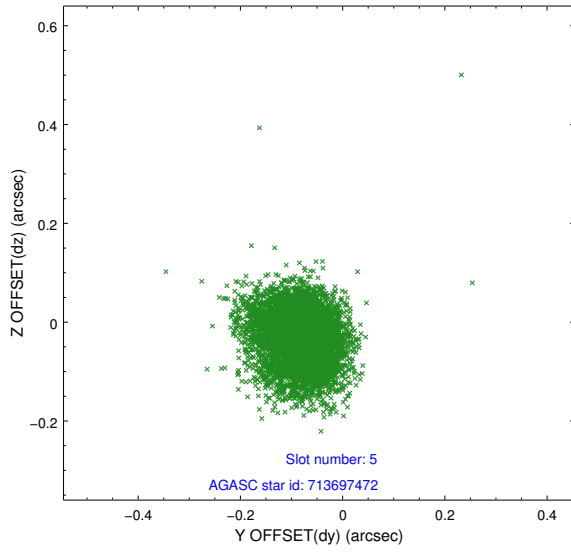
### 2.4.1 Slot 3



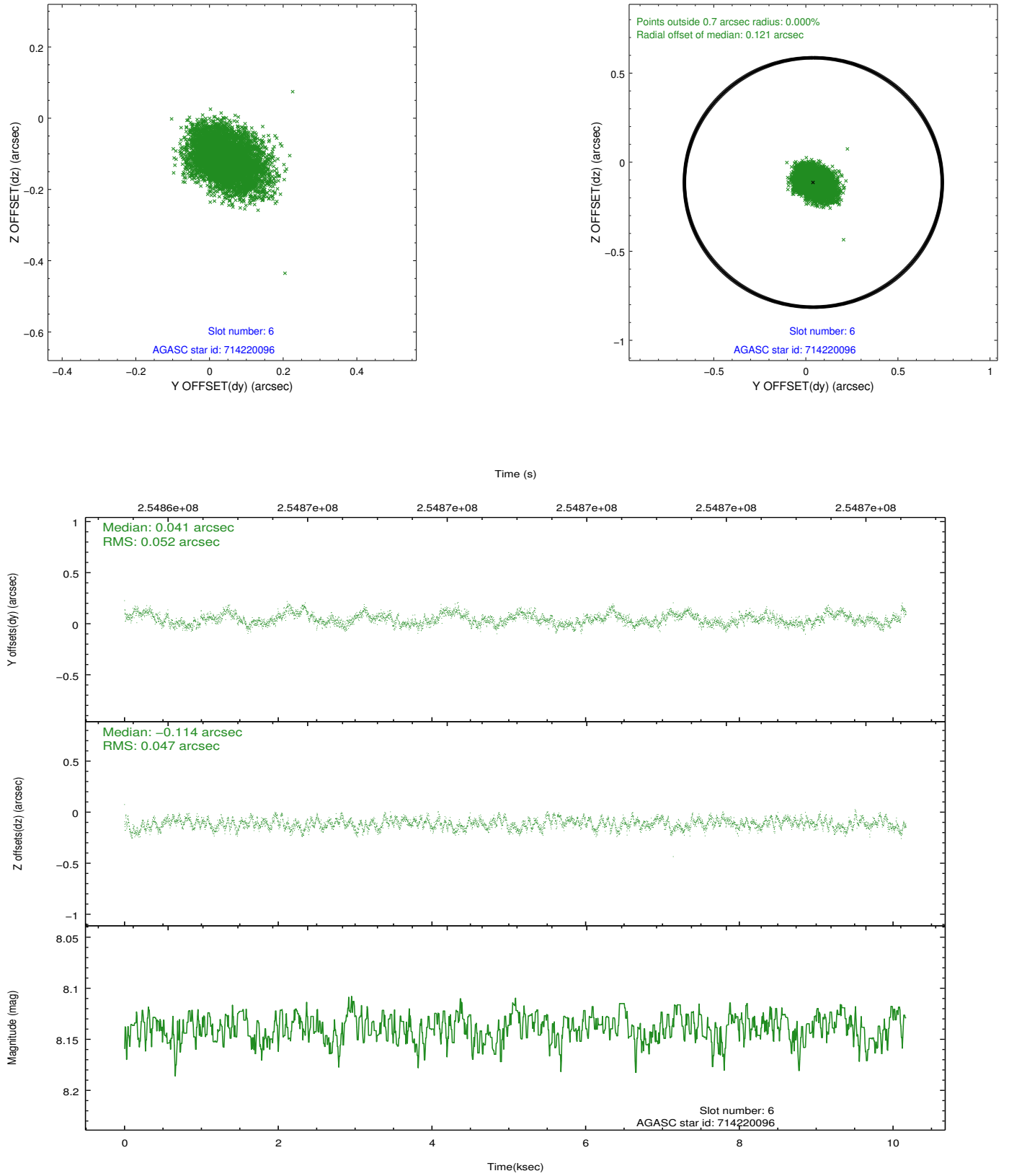
## 2.4.2 Slot 4



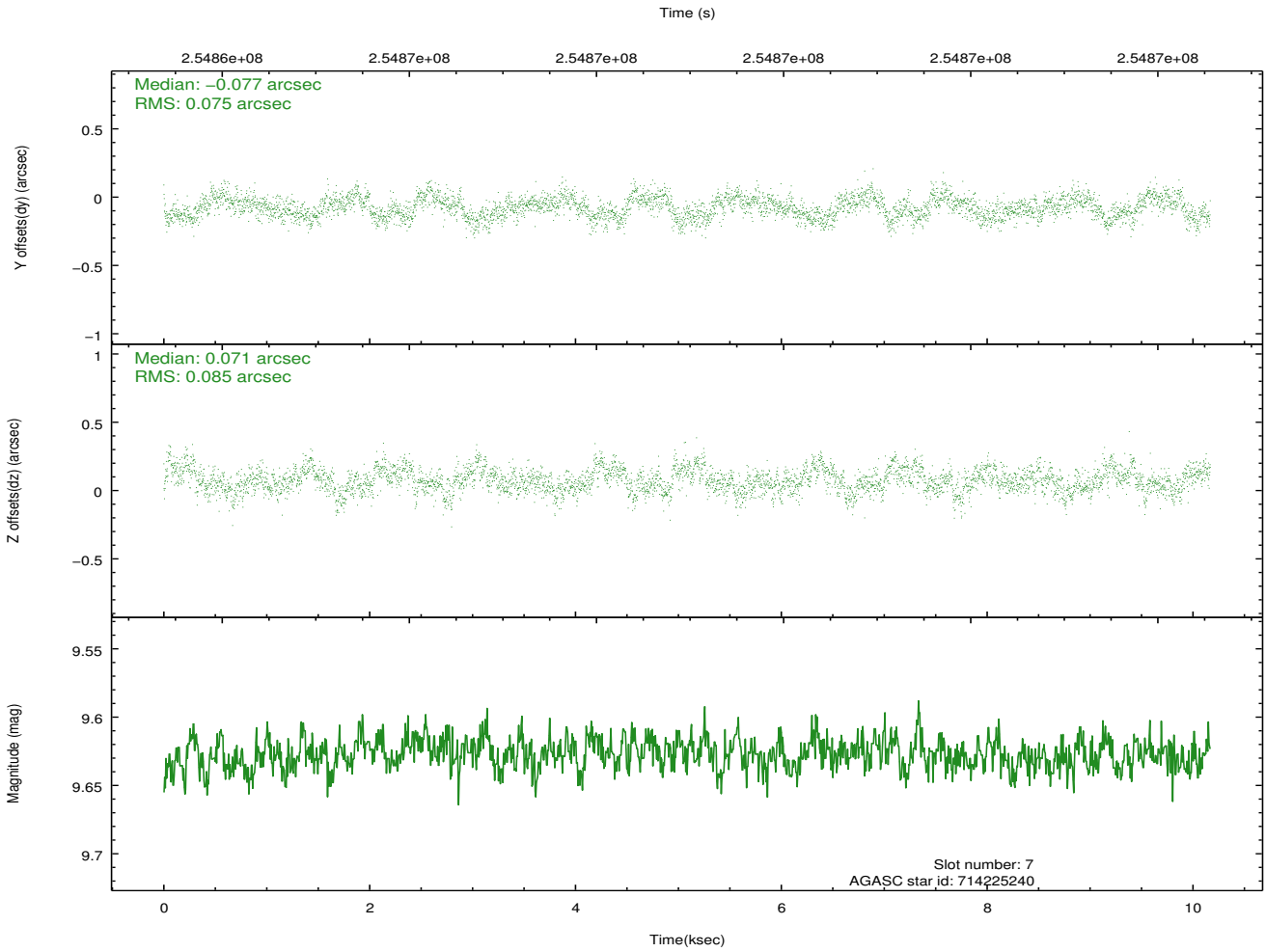
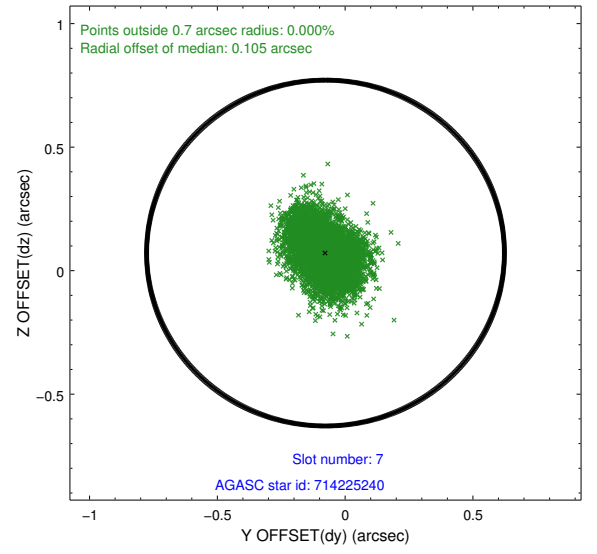
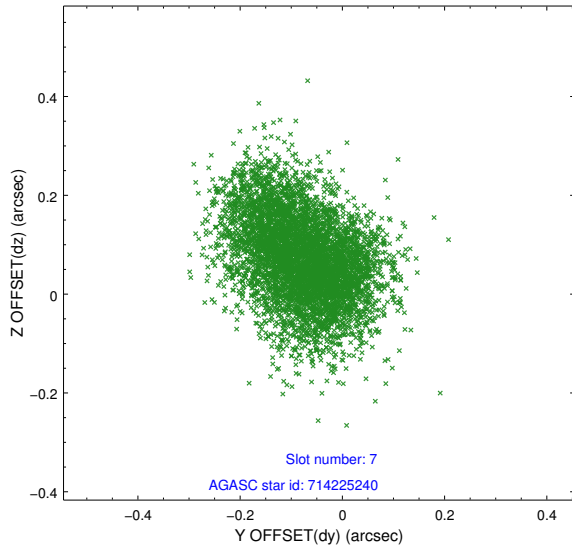
### 2.4.3 Slot 5



## 2.4.4 Slot 6

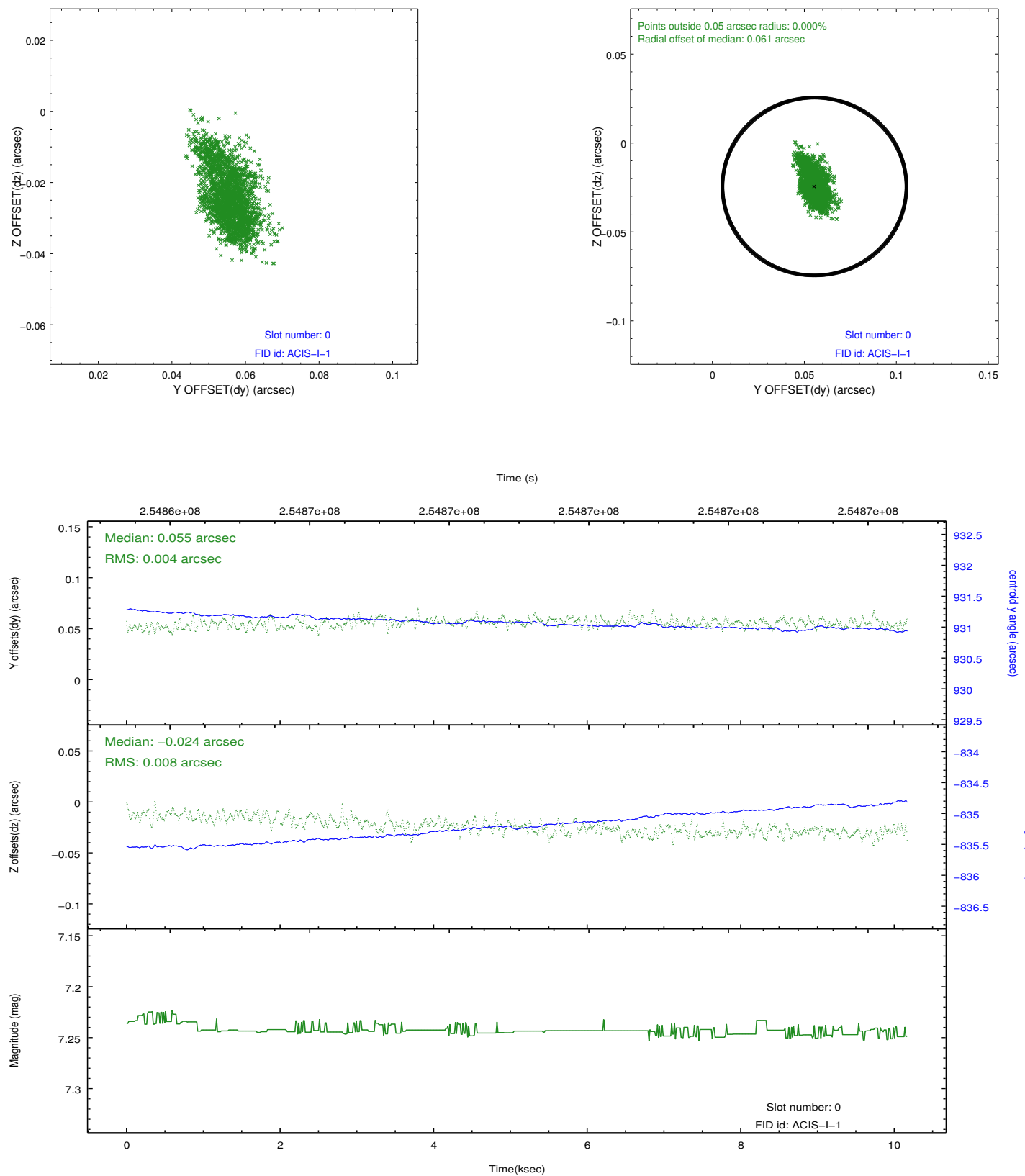


### 2.4.5 Slot 7

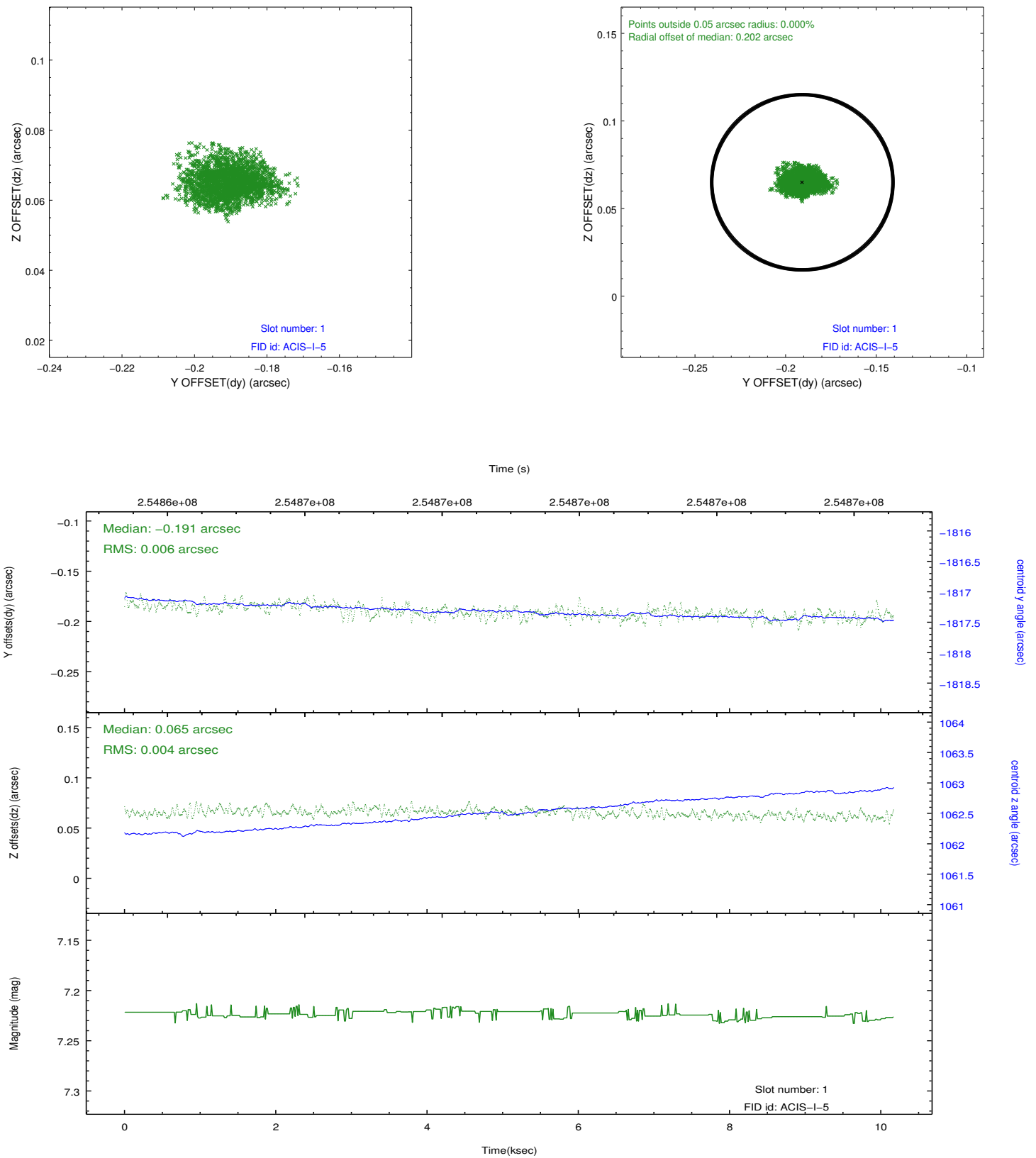


## 2.5 FID Slots

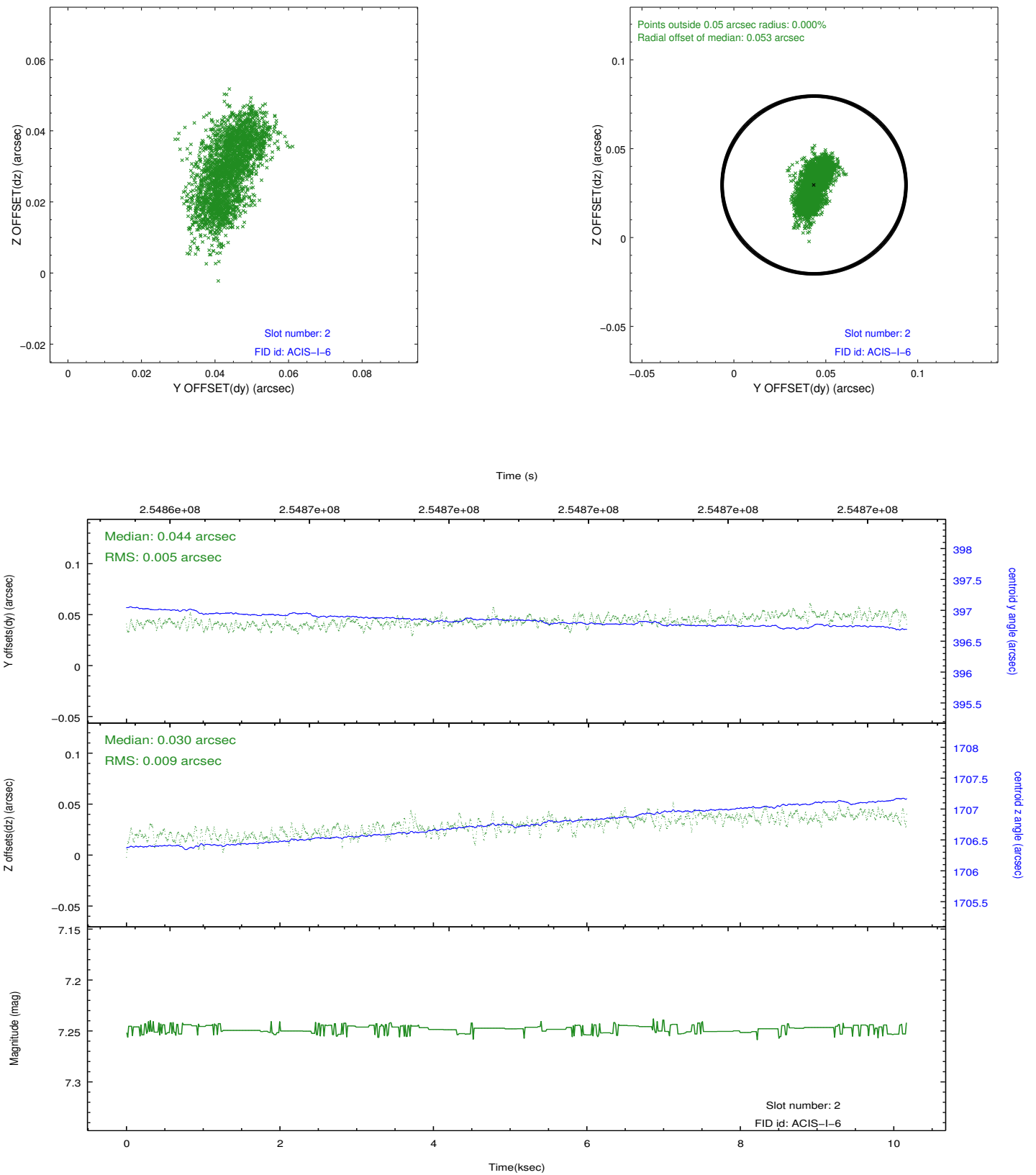
### 2.5.1 Slot 0



## 2.5.2 Slot 1



### 2.5.3 Slot 2



## A Summary

### A.1 Status

V&V Scientist	Jen Lauer
V&V Date (YYYY-MM-DD)	2012.03.26
V&V Edition	1
V&V Disposition and Status	OK
V&V Charge Time	10.1648999

### A.2 Comments