

# V&V Reference Report

## L2 ASCDS Version : 8.4.3.1

Observation 7401 - L2 Version 2  
Chandra X-Ray Center

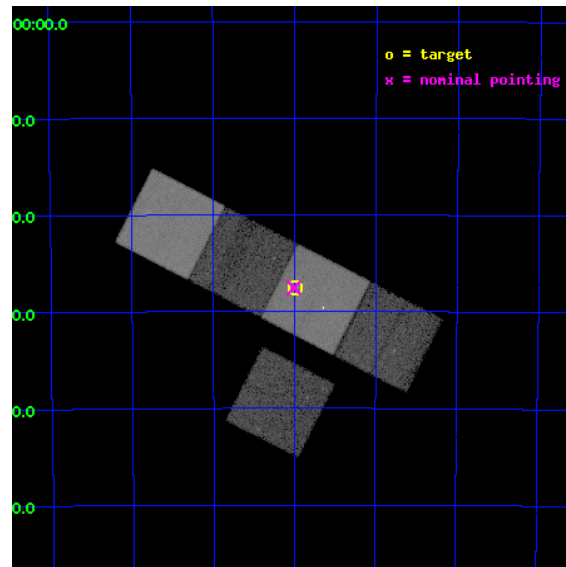
L2 Processing Date : Apr 8 2012

## Contents

<b>1</b>	<b>Front</b>	<b>2</b>
<b>2</b>	<b>OBI</b>	<b>3</b>
2.1	OBI . . . . .	3
2.1.1	Images . . . . .	3
2.1.2	Bias . . . . .	3
2.1.3	Parameters . . . . .	4
2.1.4	Events . . . . .	4
2.2	Compared Parameters . . . . .	5
2.3	Aspect . . . . .	6
2.4	Star Slots . . . . .	9
2.4.1	Slot 3 . . . . .	9
2.4.2	Slot 4 . . . . .	10
2.4.3	Slot 5 . . . . .	11
2.4.4	Slot 6 . . . . .	12
2.4.5	Slot 7 . . . . .	13
2.5	FID Slots . . . . .	14
2.5.1	Slot 0 . . . . .	14
2.5.2	Slot 1 . . . . .	15
2.5.3	Slot 2 . . . . .	16
<b>A</b>	<b>Summary</b>	<b>17</b>
A.1	Status . . . . .	17
A.2	Comments . . . . .	17

# 1 Front

seq_num	600499	Sequence number
obs_id	7401	Observation id
title	Isolated Elliptical Galaxies	Proposal title
observer	Dr Ewan O'Sullivan	Principal investigator
object	NGC7796	Source name
dtcycle	0	&#160
cycle	P	events from which exps? Prim/Second/Both
ra_targ	359.749167	Observer's specified target RA [deg]
dec_targ	-55.458333	Observer's specified target Dec [deg]
ra_nom	359.75243134277	Nominal RA [deg]
dec_nom	-55.45923028291	Nominal Dec [deg]
roll_nom	27.059284559599	Nominal Roll [deg]
revision	2	Processing version of data
ontime	20212.000155449	Sum of GTIs [s]
livetime	19947.91549356	Livetime [s]
ontime3	20205.718164802	Sum of GTIs [s]
ontime5	20212.000155449	Sum of GTIs [s]
ontime6	20212.000155449	Sum of GTIs [s]
ontime7	20212.000155449	Sum of GTIs [s]
ontime8	20212.000155449	Sum of GTIs [s]
l2events	281246	Number of level 2 events

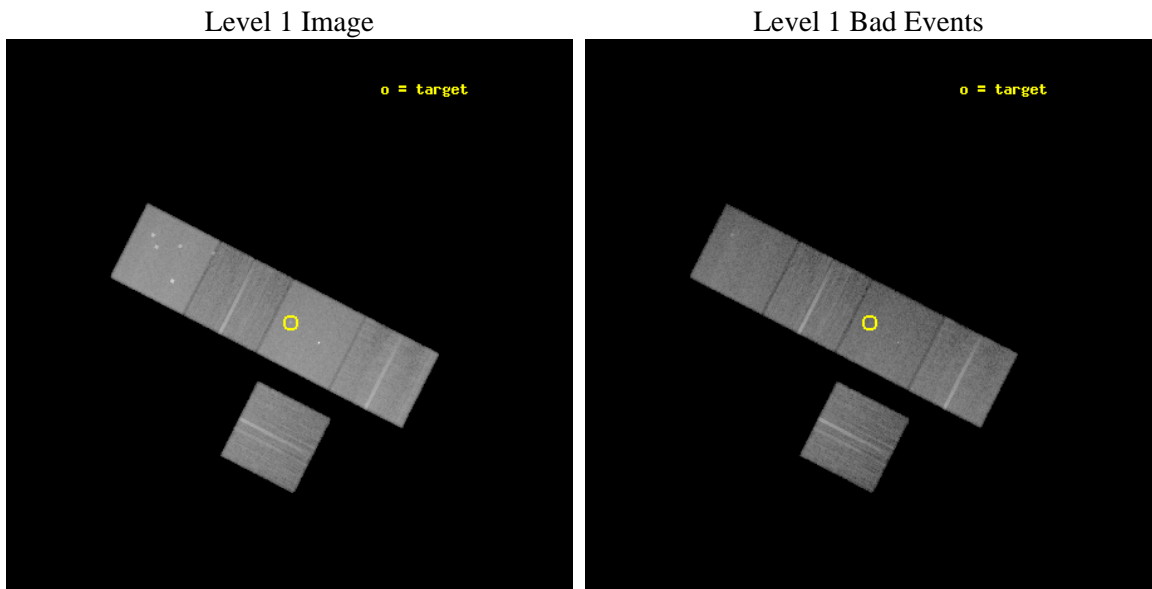




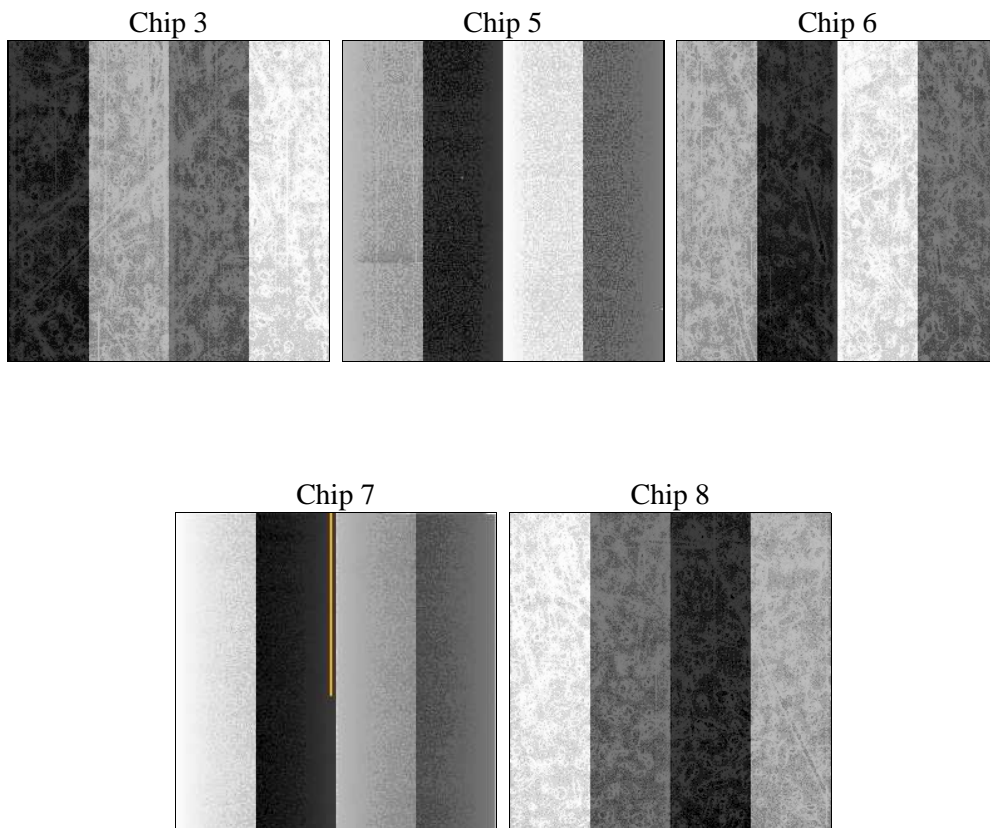
## 2 OBI

### 2.1 OBI

#### 2.1.1 Images



#### 2.1.2 Bias



### 2.1.3 Parameters

obi_num	1	Obi number	sched_exp_time	20074.888000	[s] Scheduled observation exposure time
ascdsver	8.4.3.1	Processing system revision	ontime	20212.000155449	Sum of GTIs [s]
caldbver	4.4.9	&#160	ontime3	20205.718164802	Sum of GTIs [s]
date	2012-04-08T18:42:30	Date and time of file creation	ontime5	20212.000155449	Sum of GTIs [s]
revision	2	Processing version of data	ontime6	20212.000155449	Sum of GTIs [s]
			ontime7	20212.000155449	Sum of GTIs [s]
			ontime8	20212.000155449	Sum of GTIs [s]
			l1events	1151779	Number of level 1 events

### 2.1.4 Events

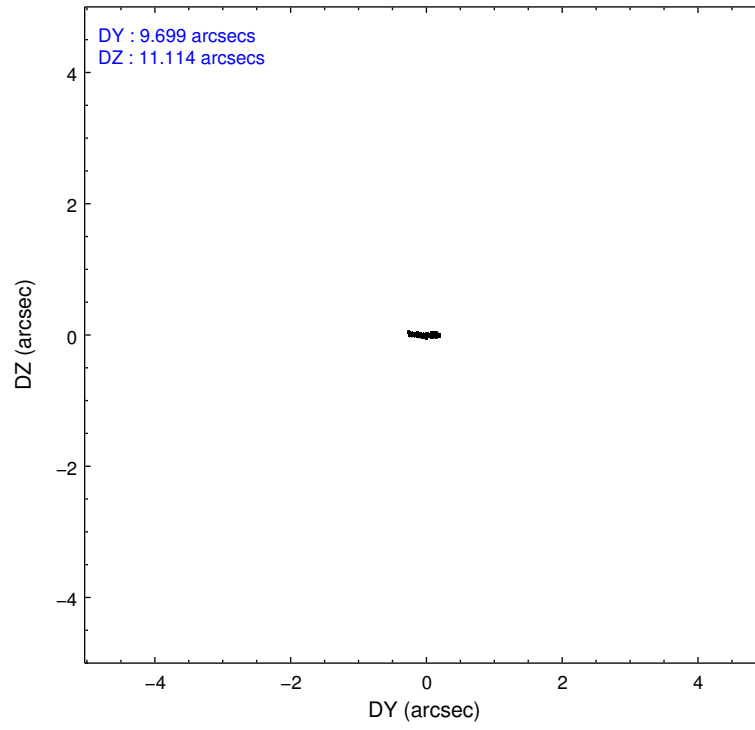
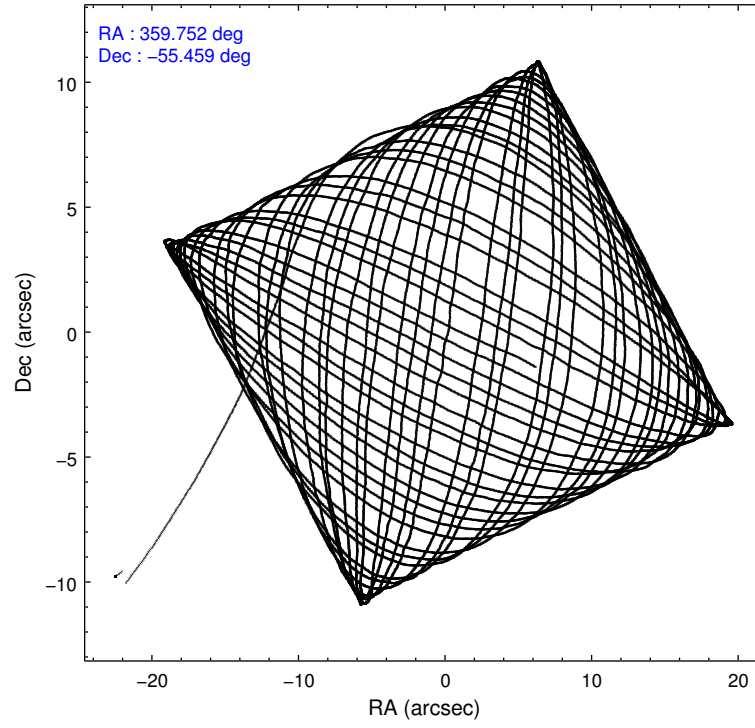
	ccd 3	ccd 5	ccd 6	ccd 7	ccd 8
level 1 events	181523	285874	186897	259212	238273
rejected events	160425	157669	165191	152545	186831
rejected %	88%	55%	88%	58%	78%

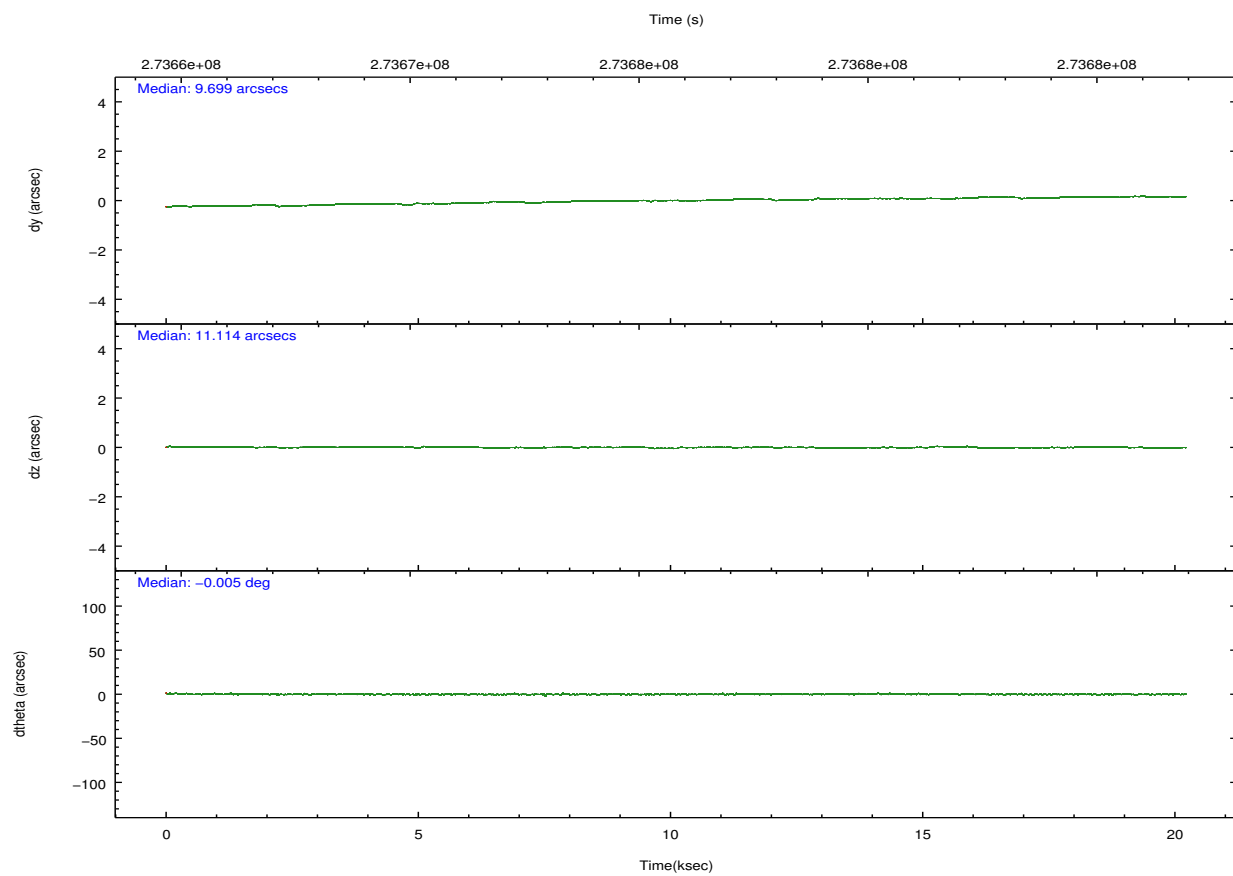
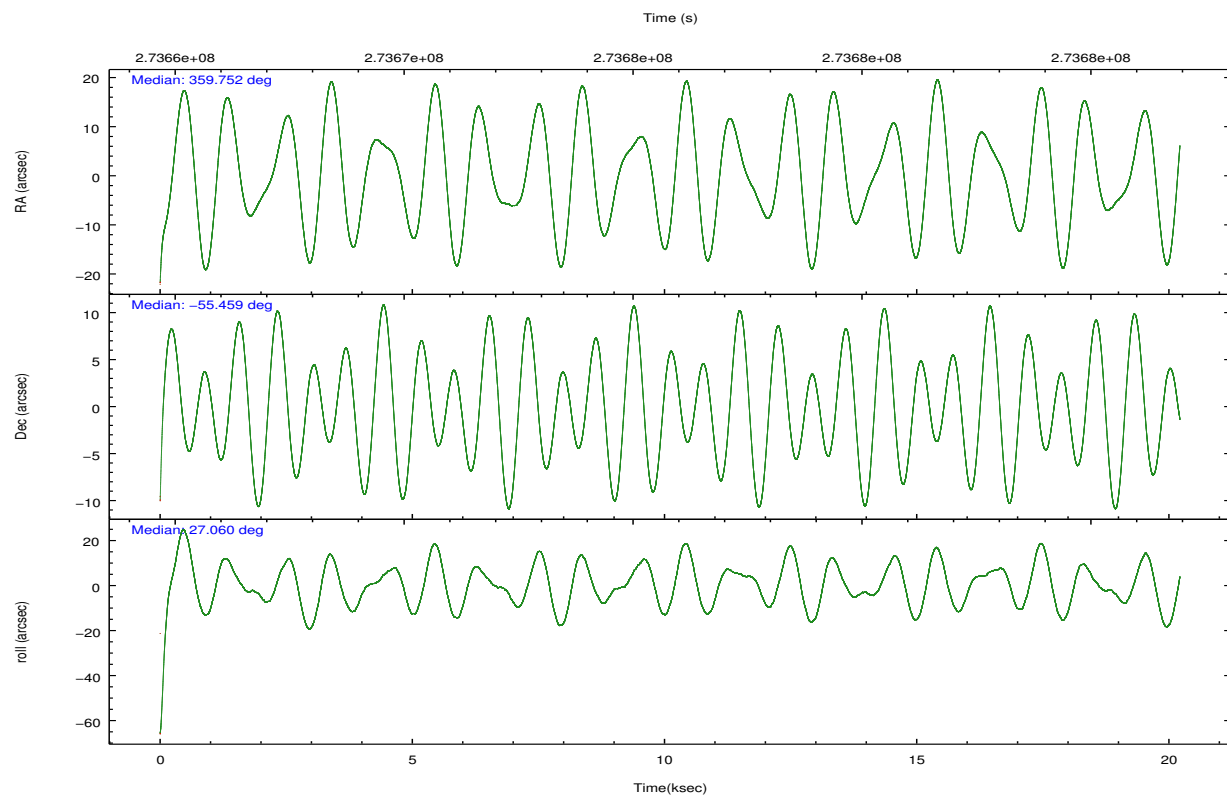
	ccd 3	ccd 5	ccd 6	ccd 7	ccd 8
grade 0 events	9806	16217	9030	11487	16656
	5%	5%	4%	4%	6%
grade 1 events	138	362	98	327	163
	0%	0%	0%	0%	0%
grade 2 events	4282	39342	4927	22744	12507
	2%	13%	2%	8%	5%
grade 3 events	2105	5009	2133	9688	5670
	1%	1%	1%	3%	2%
grade 4 events	2030	4835	2100	9657	5212
	1%	1%	1%	3%	2%
grade 5 events	8369	20305	8705	24242	11492
	4%	7%	4%	9%	4%
grade 6 events	3810	68284	4452	57258	13630
	2%	23%	2%	22%	5%
grade 7 events	150983	131520	155452	123809	172943
	83%	46%	83%	47%	72%

## 2.2 Compared Parameters

Parameter	Planned	Actual	Parameter	Planned	Actual
Instrument	ACIS	ACIS	Obspar format version number	7	7
Detector	ACIS-35678	ACIS-35678	Obspar file type	PREDICTED	ACTUAL
Grating	NONE	NONE	Obspar update status	NONE	UPDATED
Data mode	VFAINT	VFAINT	Number of optional ACIS chips dropped	0	0
Observation mode	POINTING	POINTING	On-chip summing requested	N	N
[deg] Pointing RA	359.726878	359.7524313427693	Subarray requested	NONE	NONE
[deg] Pointing Dec	-55.482316	-55.45923028290988	Alternating exposures requested	N	N
[deg] Pointing Roll	26.881641	27.05928455959916	[s] Primary exposure time	0.000000	3.1
[mm] SIM focus pos	-0.684267	-0.6828225247311905			
[mm] SIM defocus	0	0.001444936568705701			
[mm] SIM translation stage pos	-190.132523	-190.1400660498719			
[mm] SIM translation stage offset	0	0.00754346686406393			
[s] Observation start time (MET)	273665841.184000	273664435.54256			
Observation start date	2006-09-03T10:16:16	2006-09-03T09:53:55			
[s] Observation end time (MET)	273685916.184000	273686129.66858			
Observation end date	2006-09-03T15:50:51	2006-09-03T15:55:29			
Read mode	TIMED	TIMED			

## 2.3 Aspect



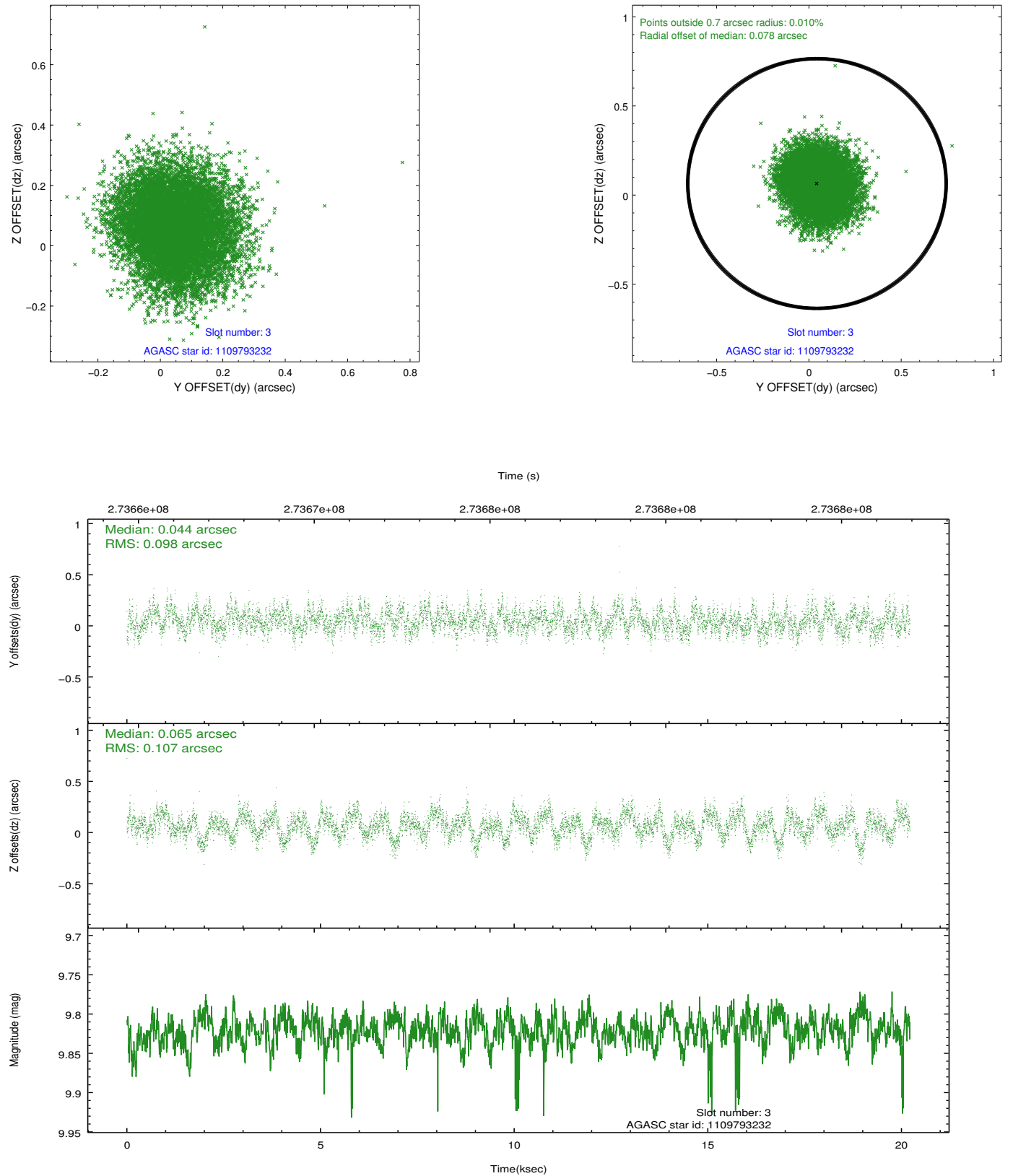


### Slot Statistics

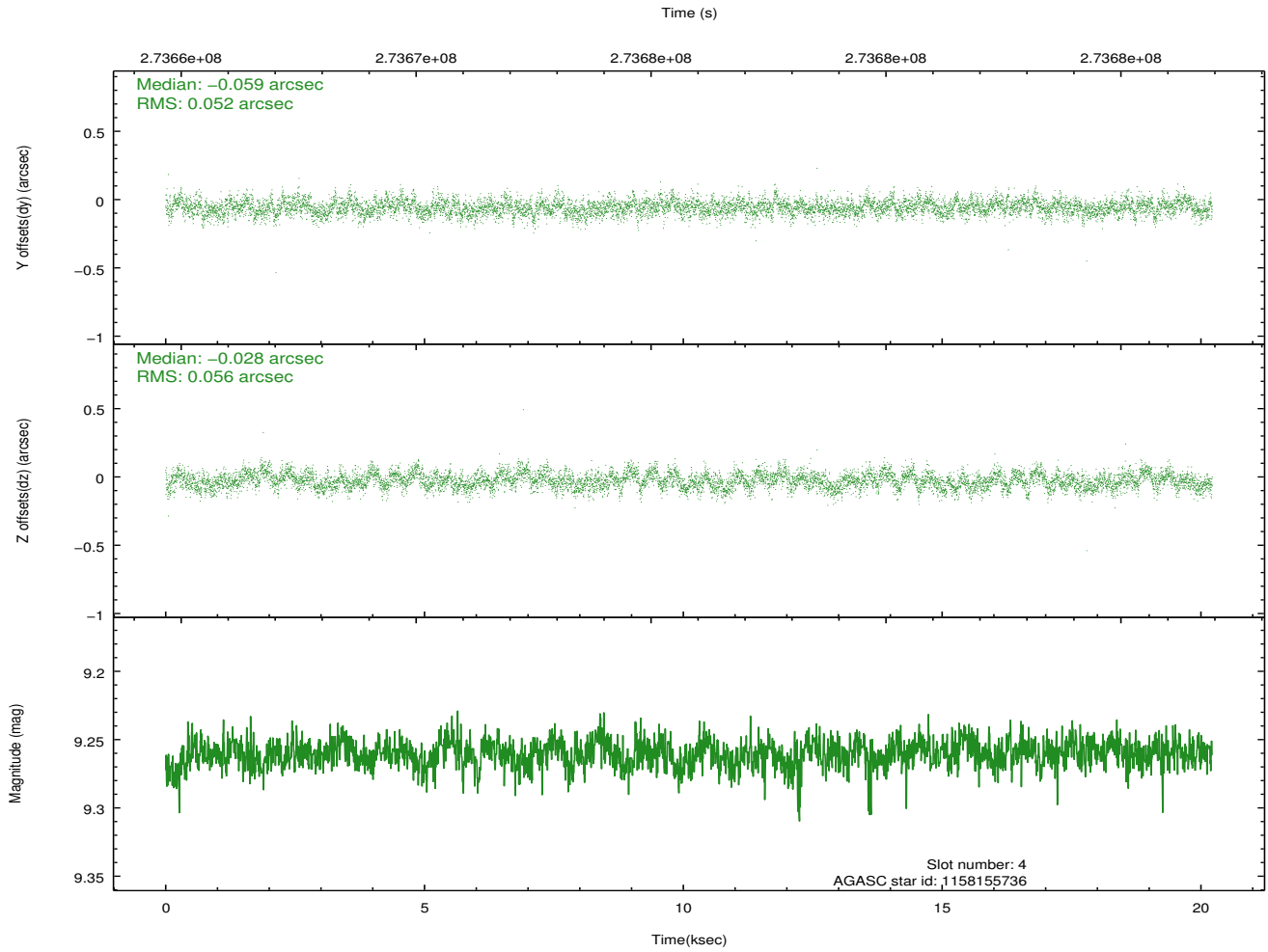
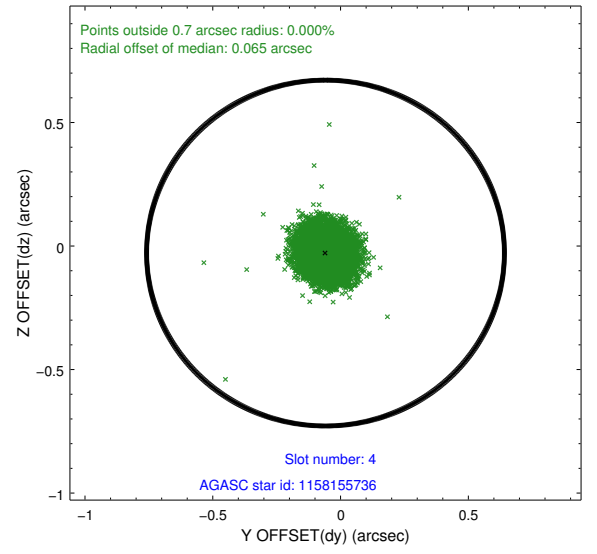
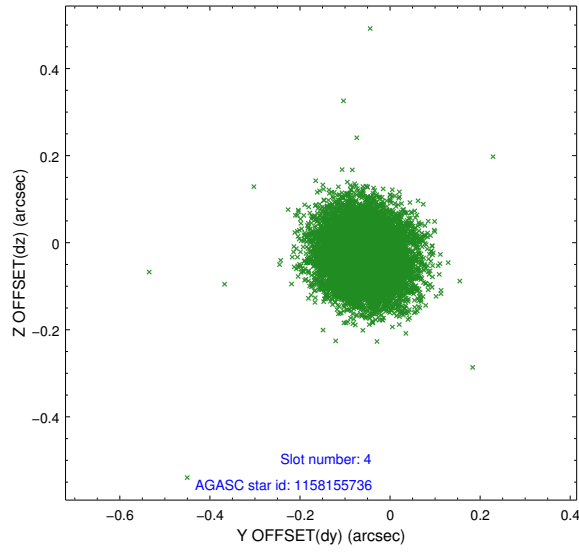
slot	status	id	mag	n_pts	med_dy	med_dz	dr1	dr2	ra	dec	mean_y	mean_z
0	FID	ACIS-S-2	7.11	4932	-0.048	-0.019	0.009	0.015	0.000000	0.000000	-762.53	-1732.42
1	FID	ACIS-S-4	7.22	4932	0.156	0.029	0.012	0.021	0.000000	0.000000	2150.84	175.96
2	FID	ACIS-S-5	7.23	4932	-0.140	-0.001	0.012	0.019	0.000000	0.000000	-1815.26	169.76
3	GUIDE	1109793232	9.82	9854	0.044	0.065	0.156	0.245	0.817225	-55.405068	2106.03	-775.24
4	GUIDE	1158155736	9.26	9856	-0.059	-0.028	0.080	0.130	358.551913	-55.474505	-2134.15	1090.73
5	GUIDE	1158155768	9.82	9851	0.063	-0.070	0.109	0.180	359.415582	-55.212324	-131.41	1154.79
6	GUIDE	1158156600	8.25	9863	0.037	0.026	0.069	0.110	359.147180	-55.483443	-1058.59	526.81
7	GUIDE	1158158152	9.08	9852	-0.088	0.015	0.091	0.141	359.149666	-56.177349	-2165.49	-1713.00

## 2.4 Star Slots

### 2.4.1 Slot 3

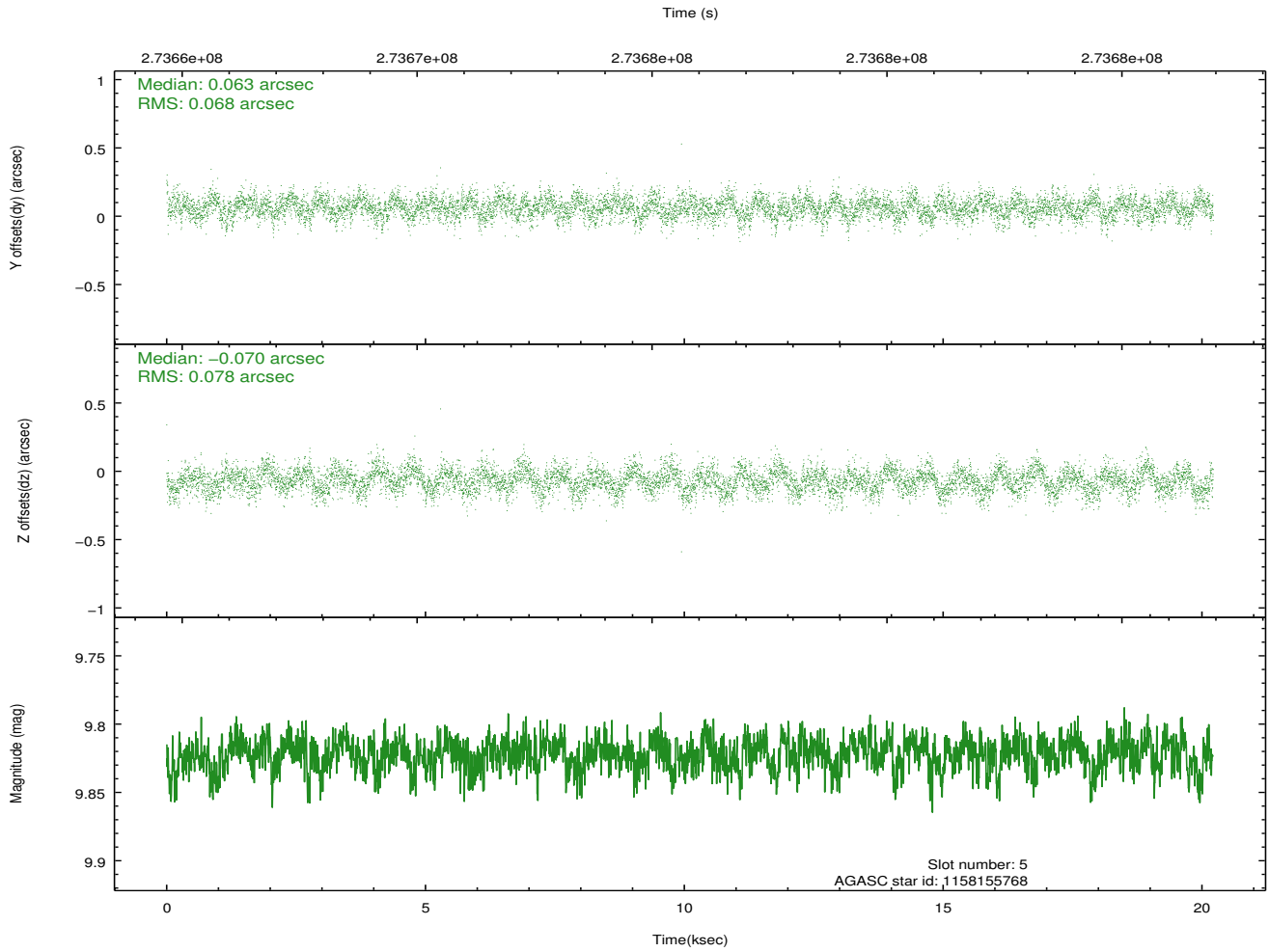
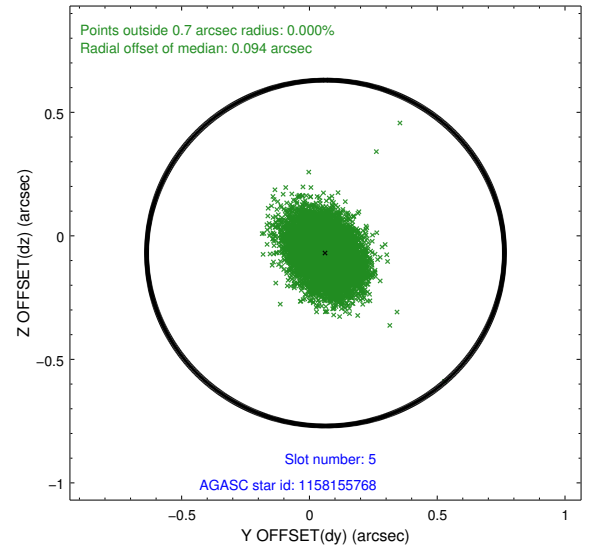
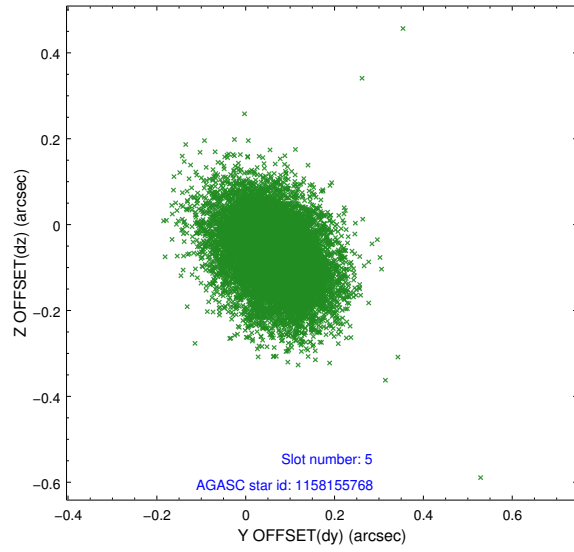


## 2.4.2 Slot 4

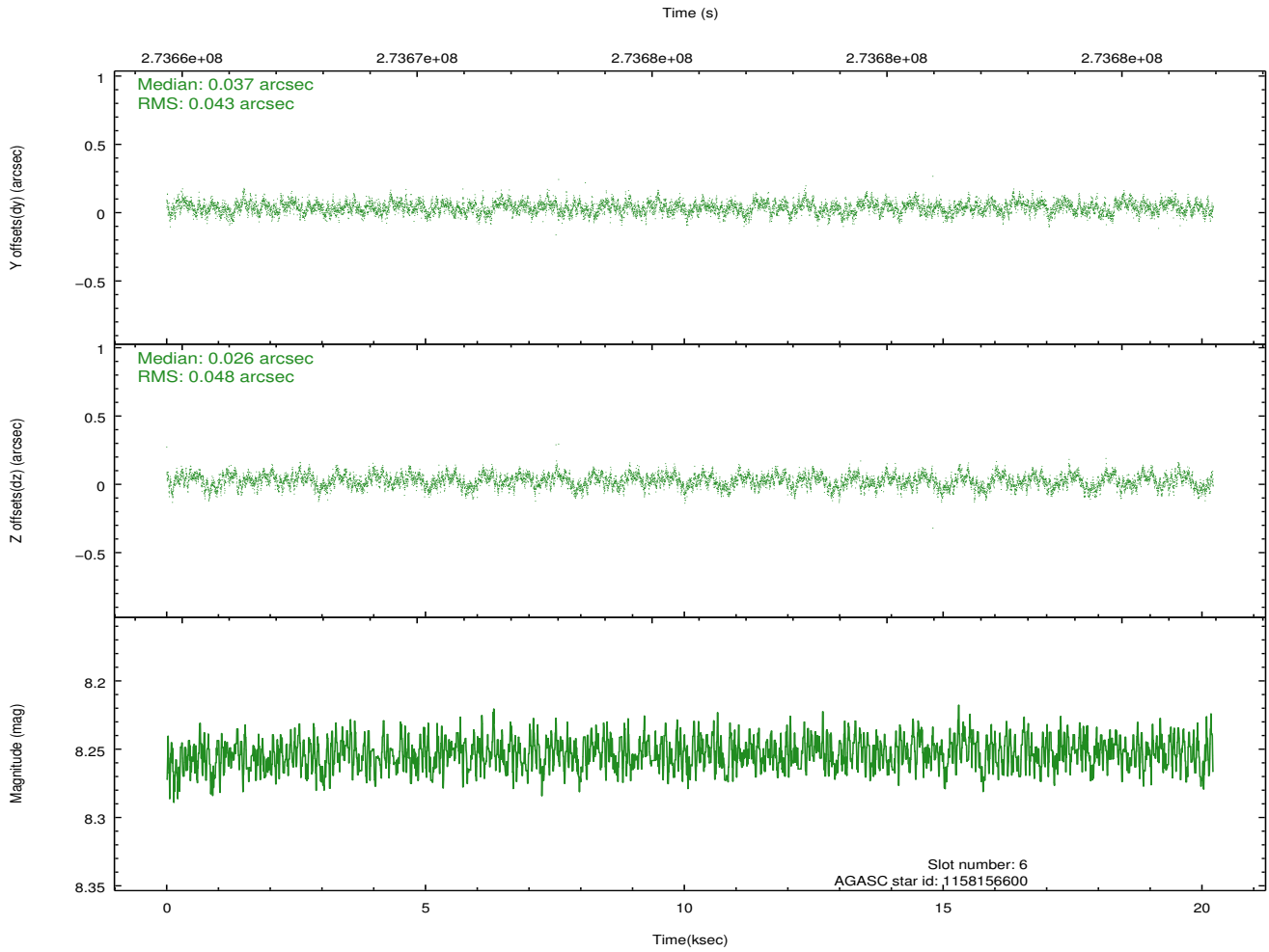
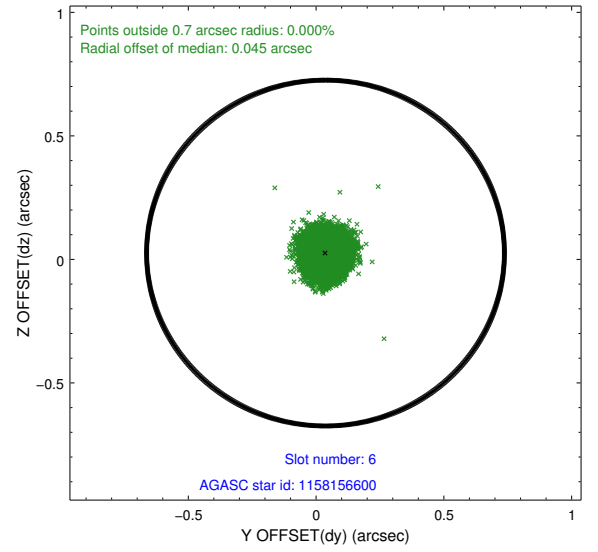
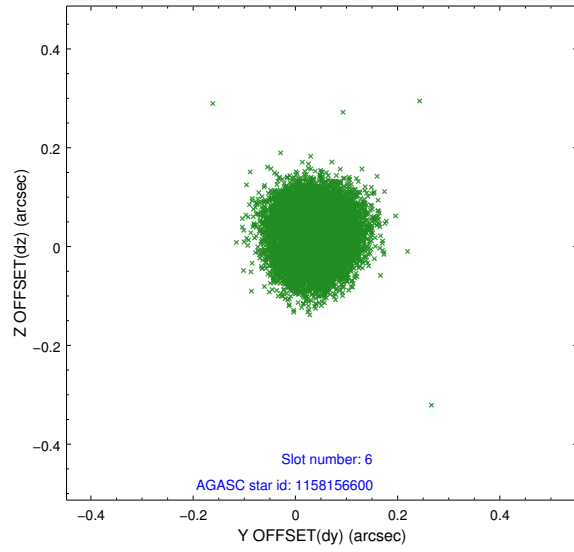




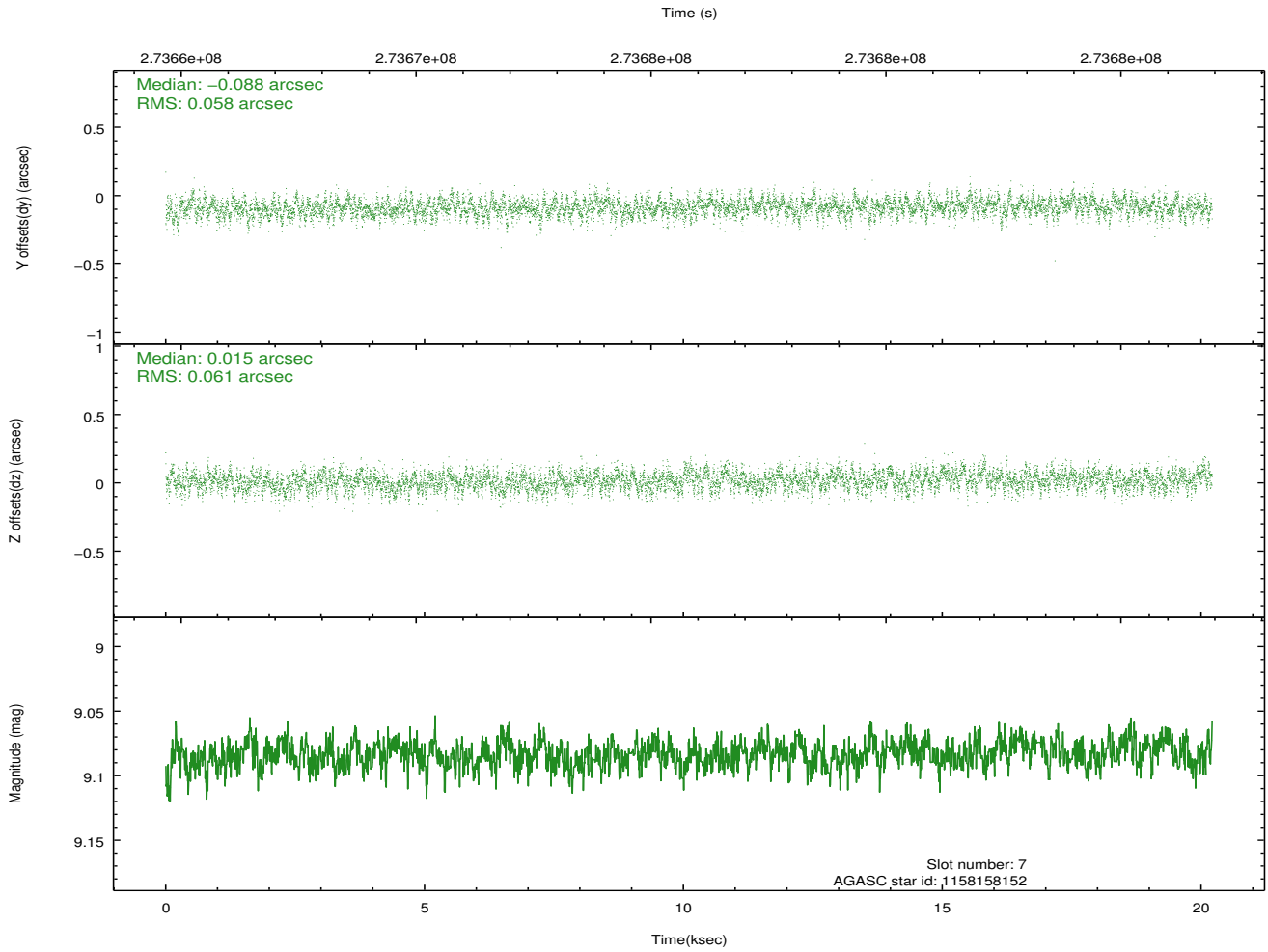
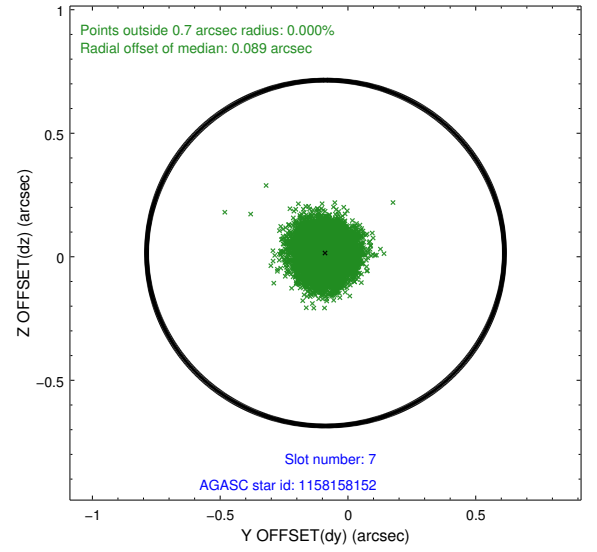
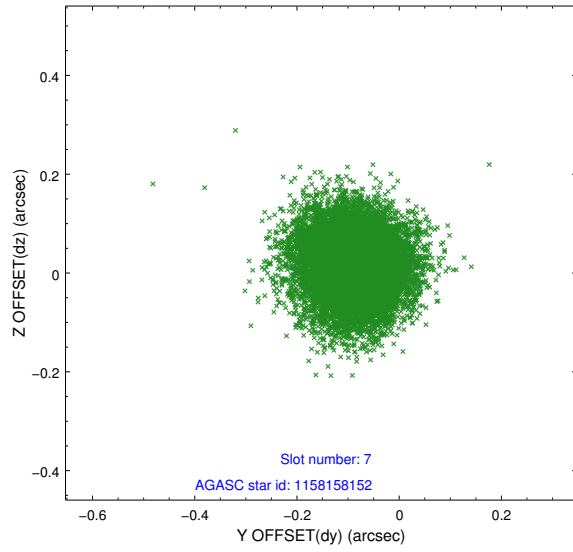
### 2.4.3 Slot 5



## 2.4.4 Slot 6

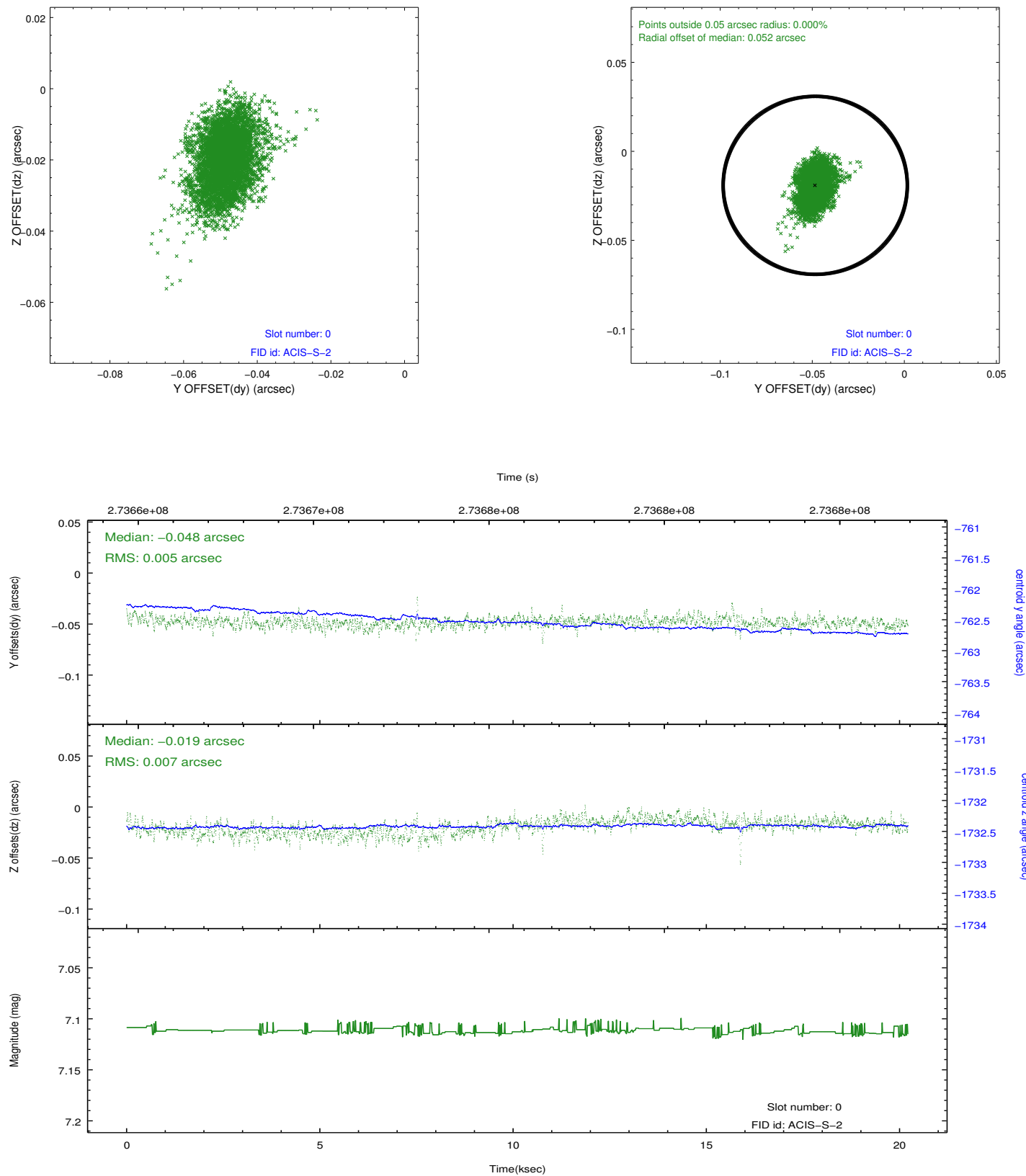


## 2.4.5 Slot 7

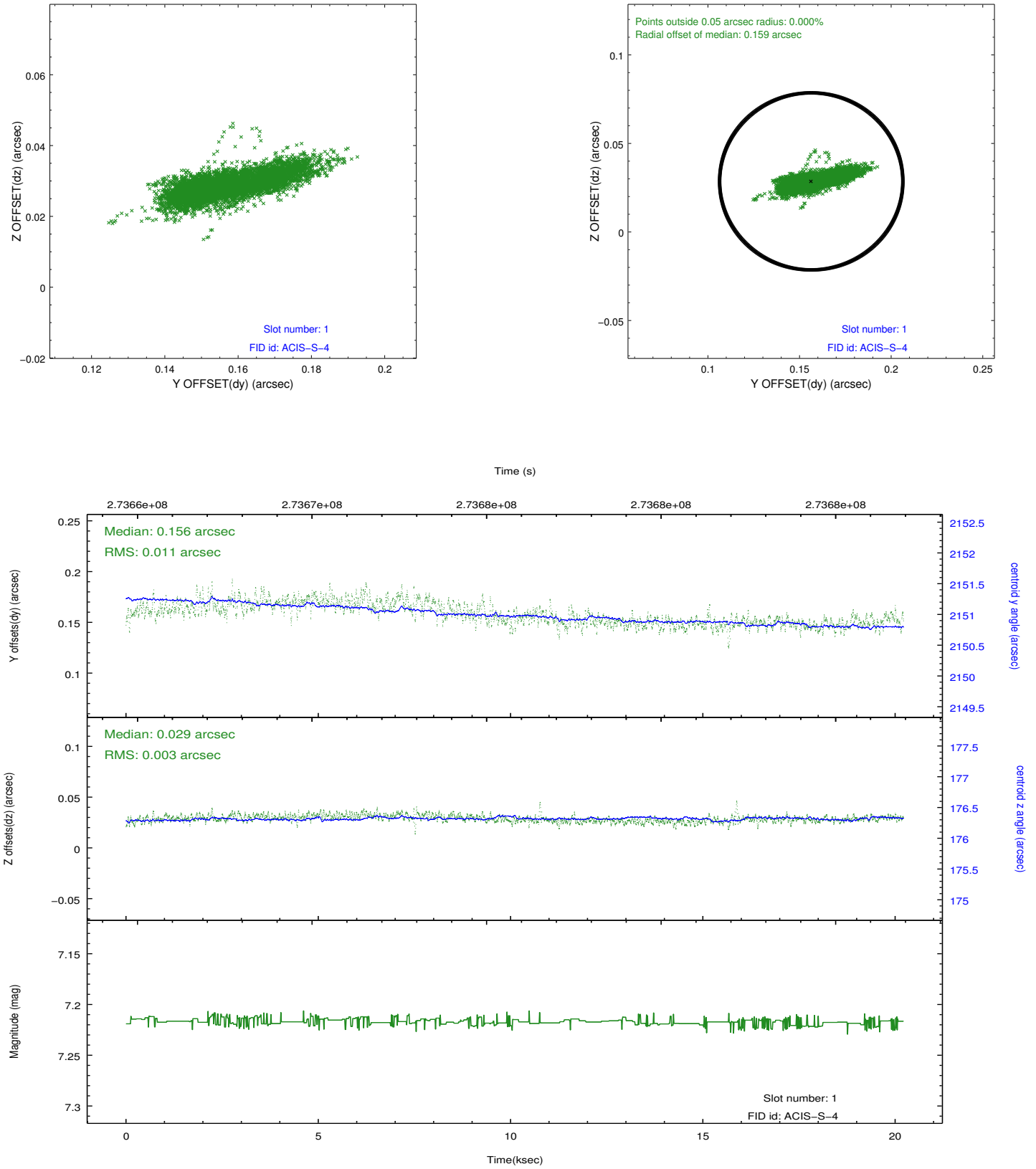


## 2.5 FID Slots

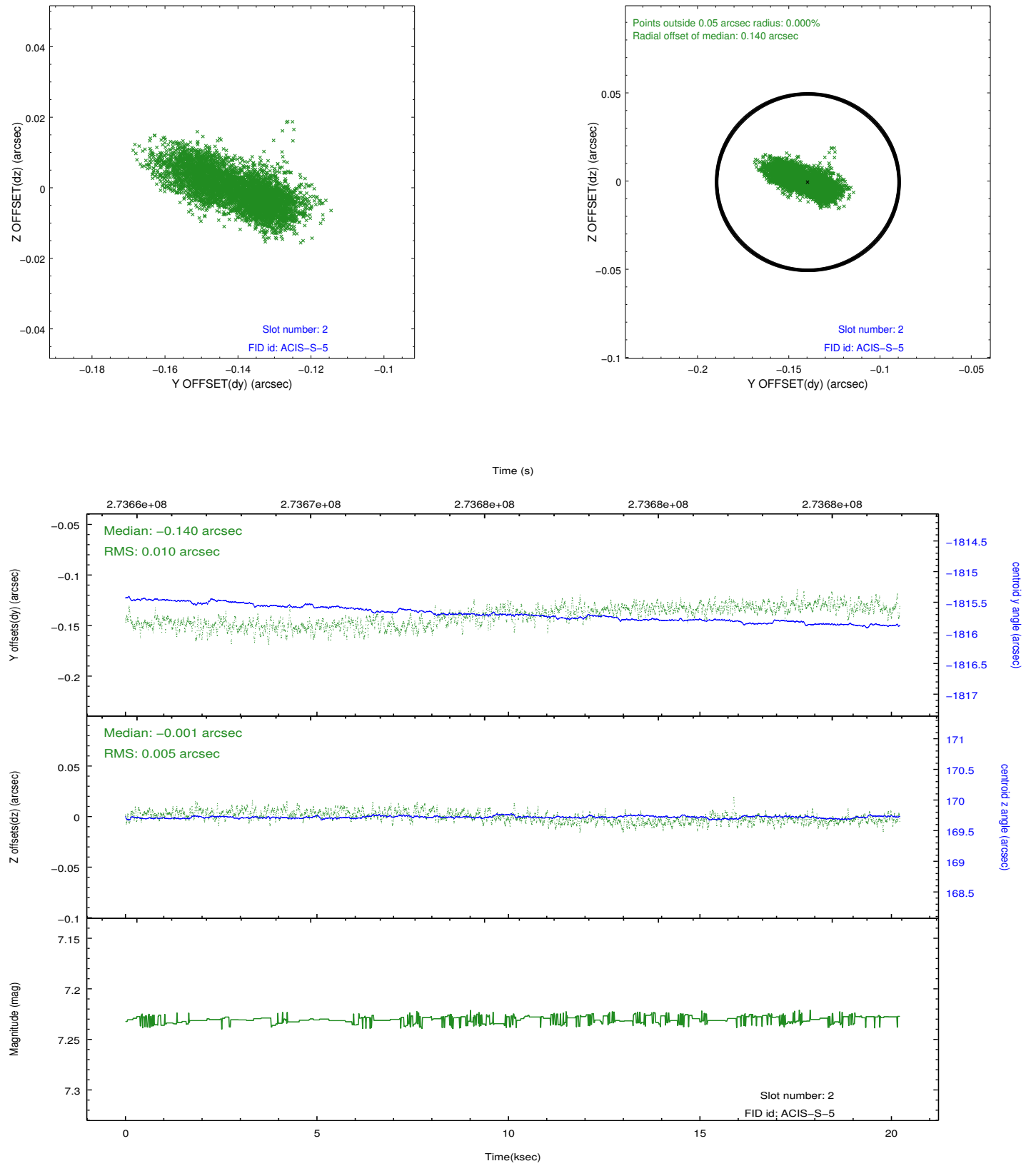
### 2.5.1 Slot 0



## 2.5.2 Slot 1



### 2.5.3 Slot 2



## A Summary

### A.1 Status

V&V Scientist	Jen Lauer
V&V Date (YYYY-MM-DD)	2012.04.09
V&V Edition	1
V&V Disposition and Status	OK
V&V Charge Time	20.2120001

### A.2 Comments