

# V&V Reference Report

## L2 ASCDS Version : 8.4.3

Observation 7149 - L2 Version 2  
Chandra X-Ray Center

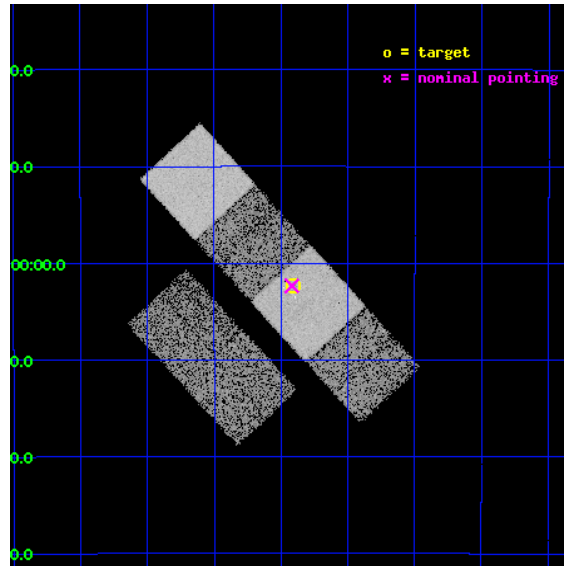
L2 Processing Date : Mar 28 2012

## Contents

<b>1</b>	<b>Front</b>	<b>2</b>
<b>2</b>	<b>OBI</b>	<b>3</b>
2.1	OBI . . . . .	3
2.1.1	Images . . . . .	3
2.1.2	Bias . . . . .	3
2.1.3	Parameters . . . . .	4
2.1.4	Events . . . . .	4
2.2	Compared Parameters . . . . .	5
2.3	Aspect . . . . .	6
2.4	Star Slots . . . . .	9
2.4.1	Slot 3 . . . . .	9
2.4.2	Slot 4 . . . . .	10
2.4.3	Slot 5 . . . . .	11
2.4.4	Slot 6 . . . . .	12
2.4.5	Slot 7 . . . . .	13
2.5	FID Slots . . . . .	14
2.5.1	Slot 0 . . . . .	14
2.5.2	Slot 1 . . . . .	15
2.5.3	Slot 2 . . . . .	16
<b>A</b>	<b>Summary</b>	<b>17</b>
A.1	Status . . . . .	17
A.2	Comments . . . . .	17

# 1 Front

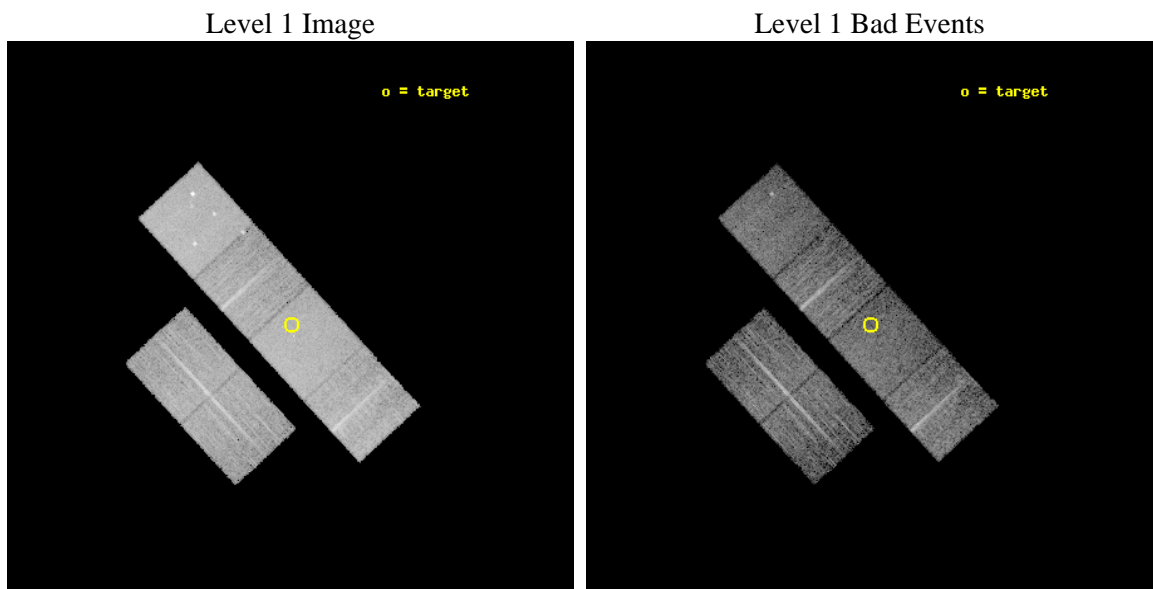
seq_num	600587	Sequence number
obs_id	7149	Observation id
title	Searching for accreting black holes in nuclear star clusters	Propo
observer	Dr Roberto Soria	Principal investigator
object	NGC5068	Source name
dtcycle	0	&#160
cycle	P	events from which exps? Prim/Second/Both
ra_targ	199.7275	Observer's specified target RA [deg]
dec_targ	-21.038806	Observer's specified target Dec [deg]
ra_nom	199.72971149099	Nominal RA [deg]
dec_nom	-21.038988840825	Nominal Dec [deg]
roll_nom	47.423311223807	Nominal Roll [deg]
revision	2	Processing version of data
ontime	6755.1999748349	Sum of GTIs [s]
livetime	6669.6615652605	Livetime [s]
ontime2	6755.1999748349	Sum of GTIs [s]
ontime3	6755.1999748349	Sum of GTIs [s]
ontime5	6755.1999748349	Sum of GTIs [s]
ontime6	6755.1999748349	Sum of GTIs [s]
ontime7	6755.1999748349	Sum of GTIs [s]
ontime8	6755.1999748349	Sum of GTIs [s]
l2events	94443	Number of level 2 events



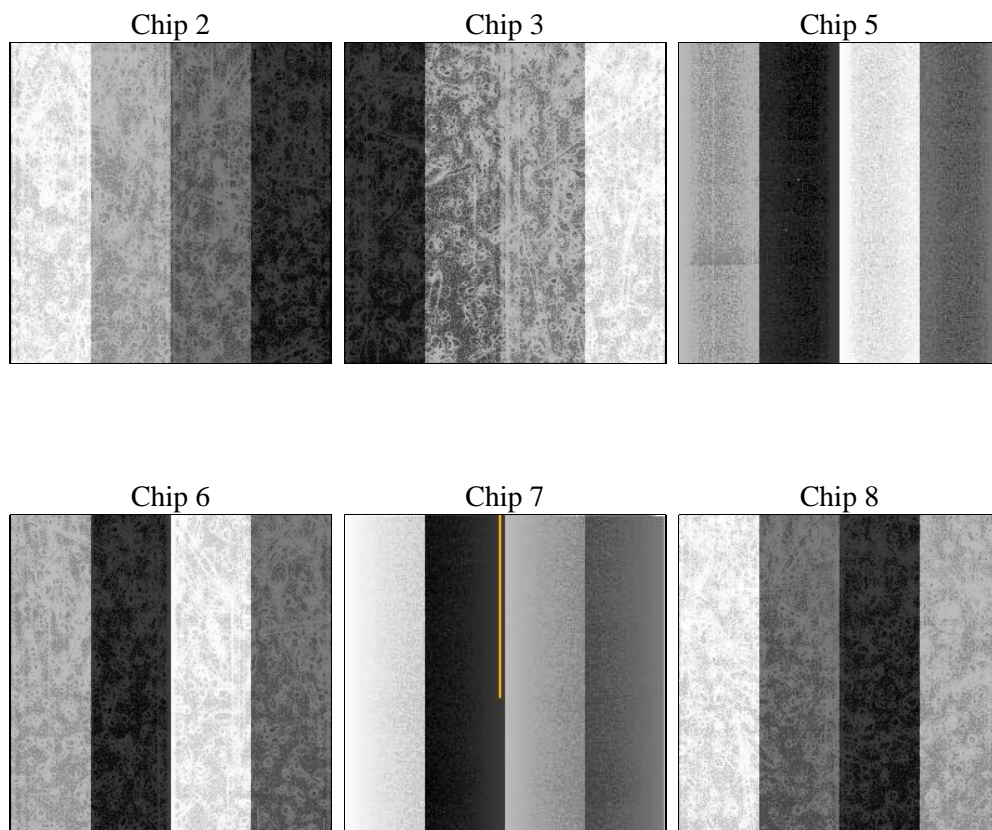
## 2 OBI

### 2.1 OBI

#### 2.1.1 Images



#### 2.1.2 Bias



### 2.1.3 Parameters

obi_num	0	Obi number	sched_exp_time	6600.000000	[s] Scheduled observation exposure time
ascdsver	8.4.3.1	Processing system revision	ontime	6755.1999748349	Sum of GTIs [s]
caldsver	4.4.8	&#160	ontime2	6755.1999748349	Sum of GTIs [s]
date	2012-03-28T05:41:35	Date and time of file creation	ontime3	6755.1999748349	Sum of GTIs [s]
revision	2	Processing version of data	ontime5	6755.1999748349	Sum of GTIs [s]
			ontime6	6755.1999748349	Sum of GTIs [s]
			ontime7	6755.1999748349	Sum of GTIs [s]
			ontime8	6755.1999748349	Sum of GTIs [s]
			l1events	460032	Number of level 1 events

### 2.1.4 Events

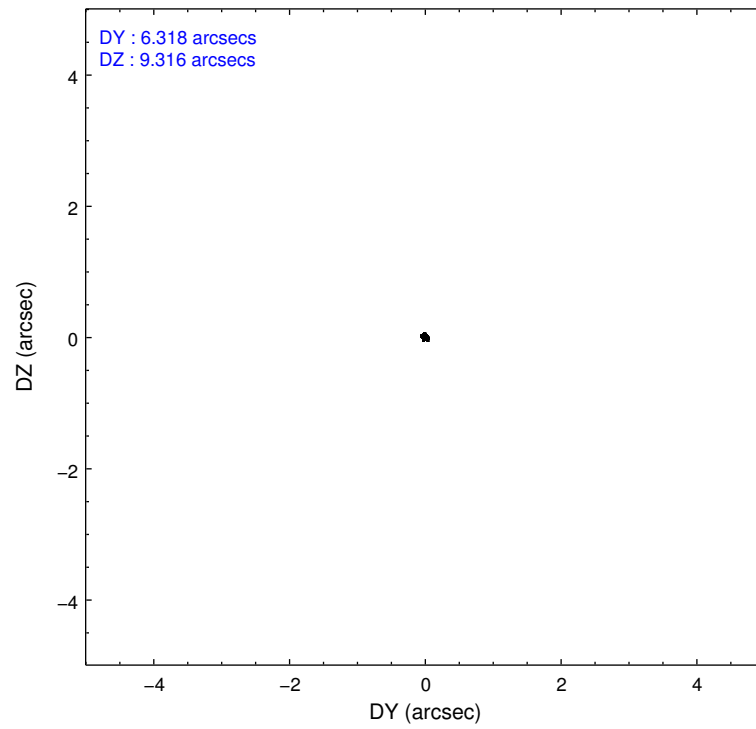
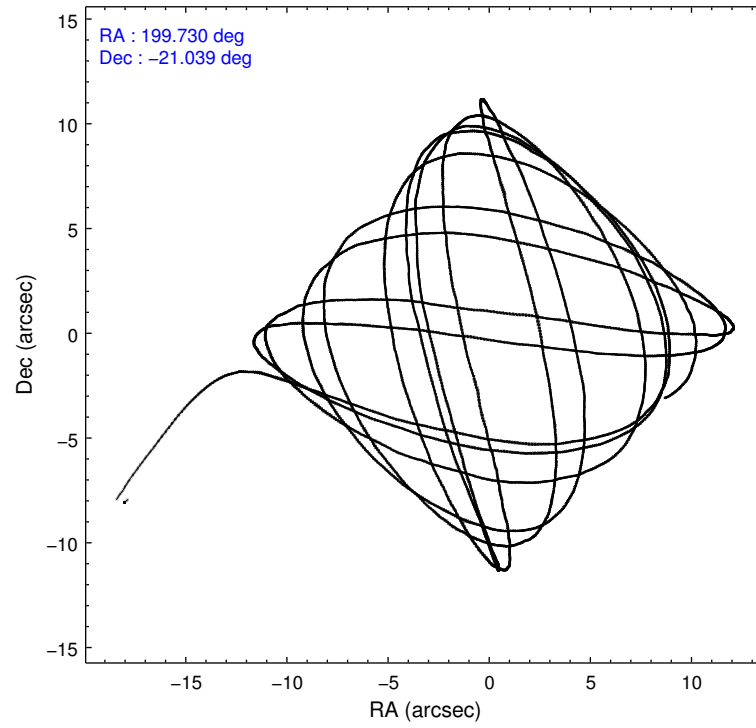
	ccd 2	ccd 3	ccd 5	ccd 6	ccd 7	ccd 8		ccd 2	ccd 3	ccd 5	ccd 6	ccd 7	ccd 8
level 1 events	66373	60884	97864	66002	86972	81937	grade 0 events	2993	3186	5278	3000	3172	5543
rejected events	59854	54292	56373	59051	53780	66020		4%	5%	5%	4%	3%	6%
rejected %	90%	89%	57%	89%	61%	80%	grade 1 events	44	35	473	28	99	59
								0%	0%	0%	0%	0%	0%
							grade 2 events	1586	1374	13464	1602	7256	3886
								2%	2%	13%	2%	8%	4%
							grade 3 events	678	691	1558	721	3151	1857
								1%	1%	1%	1%	3%	2%
							grade 4 events	702	695	1575	764	3202	1716
								1%	1%	1%	1%	3%	2%
							grade 5 events	2399	2891	6603	2967	8212	3965
								3%	4%	6%	4%	9%	4%
							grade 6 events	1170	1287	23755	1542	19613	4443
								1%	2%	24%	2%	22%	5%
							grade 7 events	56801	50725	45158	55378	42267	60468
								85%	83%	46%	83%	48%	73%

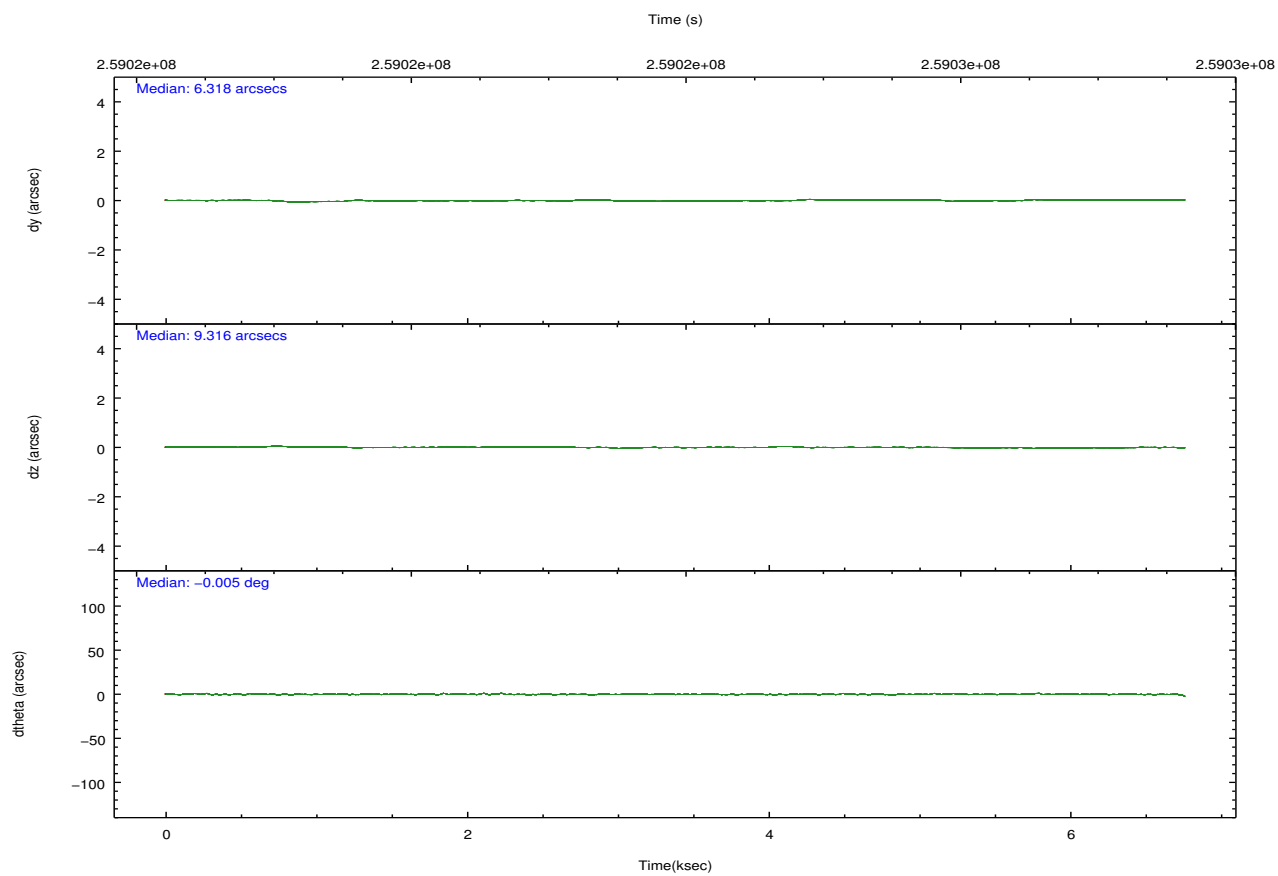
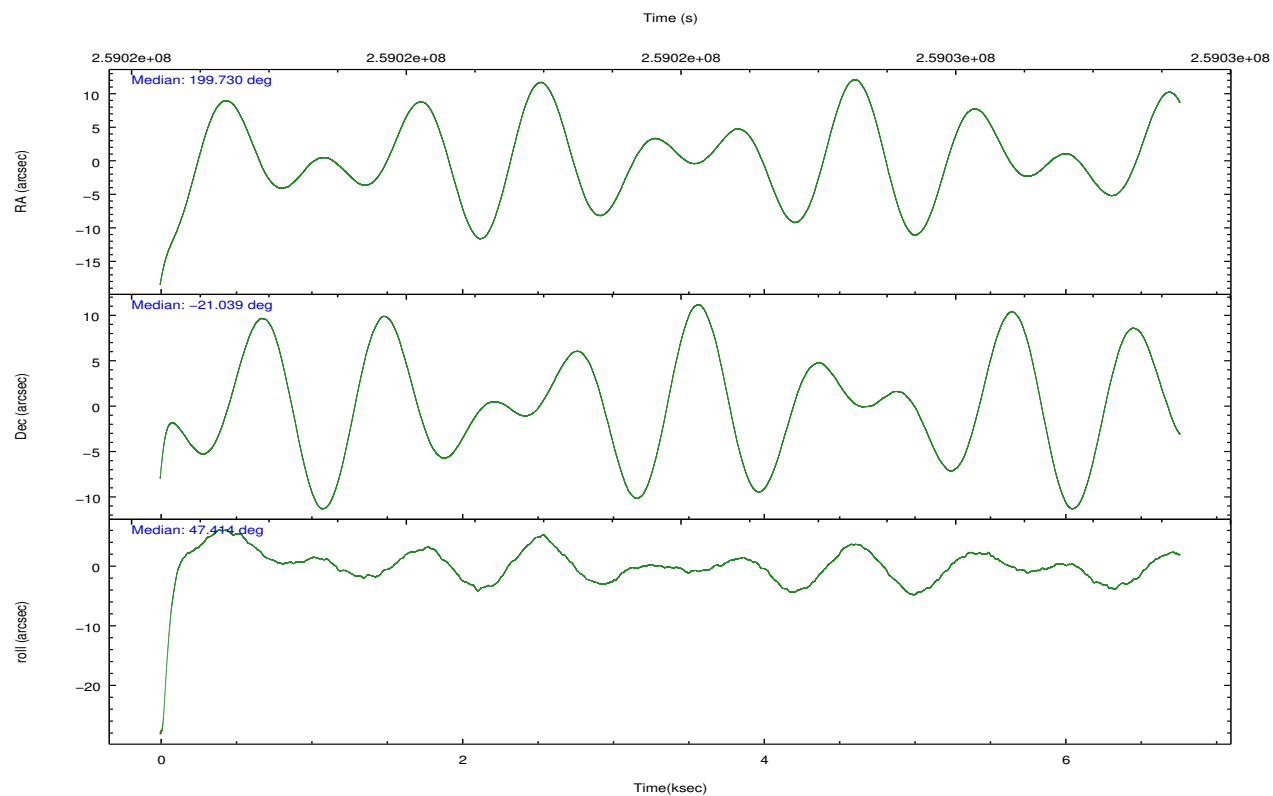


## 2.2 Compared Parameters

Parameter	Planned	Actual	Parameter	Planned	Actual
Instrument	ACIS	ACIS	Obspar format version number	7	7
Detector	ACIS-235678	ACIS-235678	Obspar file type	PREDICTED	ACTUAL
Grating	NONE	NONE	Obspar update status	NONE	UPDATED
Data mode	FAINT	FAINT	Number of optional ACIS chips dropped	0	0
Observation mode	POINTING	POINTING	On-chip summing requested	N	N
[deg] Pointing RA	199.723750	199.7297114909864	Subarray requested	NONE	NONE
[deg] Pointing Dec	-21.065685	-21.03898884082508	Alternating exposures requested	N	N
[deg] Pointing Roll	47.264585	47.42331122380733	[s] Primary exposure time	0.000000	3.2
[mm] SIM focus pos	-0.684267	-0.6828225247311905			
[mm] SIM defocus	0	0.001444936568705701			
[mm] SIM translation stage pos	-190.132523	-190.1400660498719			
[mm] SIM translation stage offset	0	0.00754346686406393			
[s] Observation start time (MET)	259020700.184000	259019311.73288			
Observation start date	2006-03-17T22:10:35	2006-03-17T21:48:31			
[s] Observation end time (MET)	259027300.184000	259028404.50831			
Observation end date	2006-03-18T00:00:35	2006-03-18T00:20:04			
Read mode	TIMED	TIMED			

## 2.3 Aspect



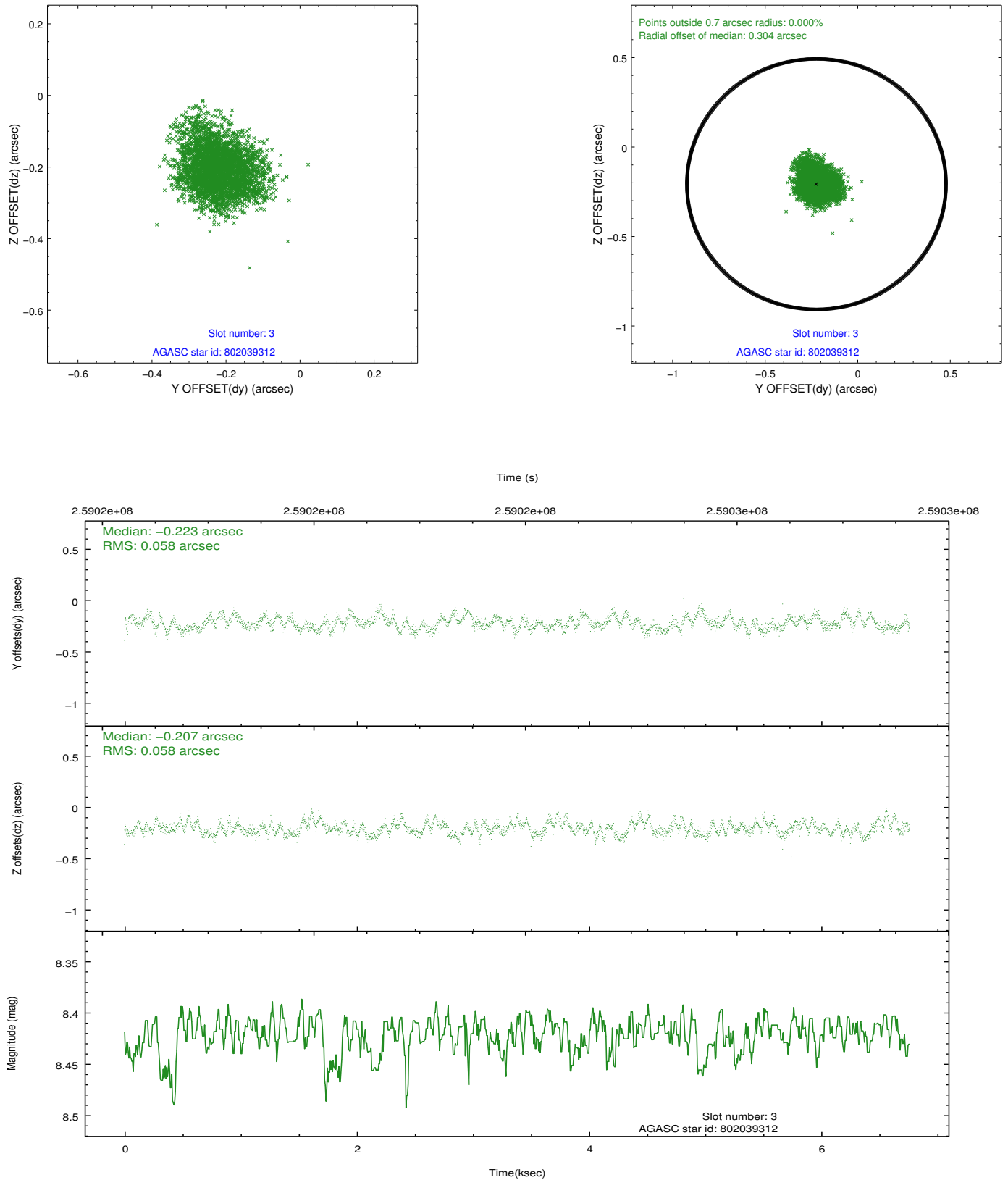


### Slot Statistics

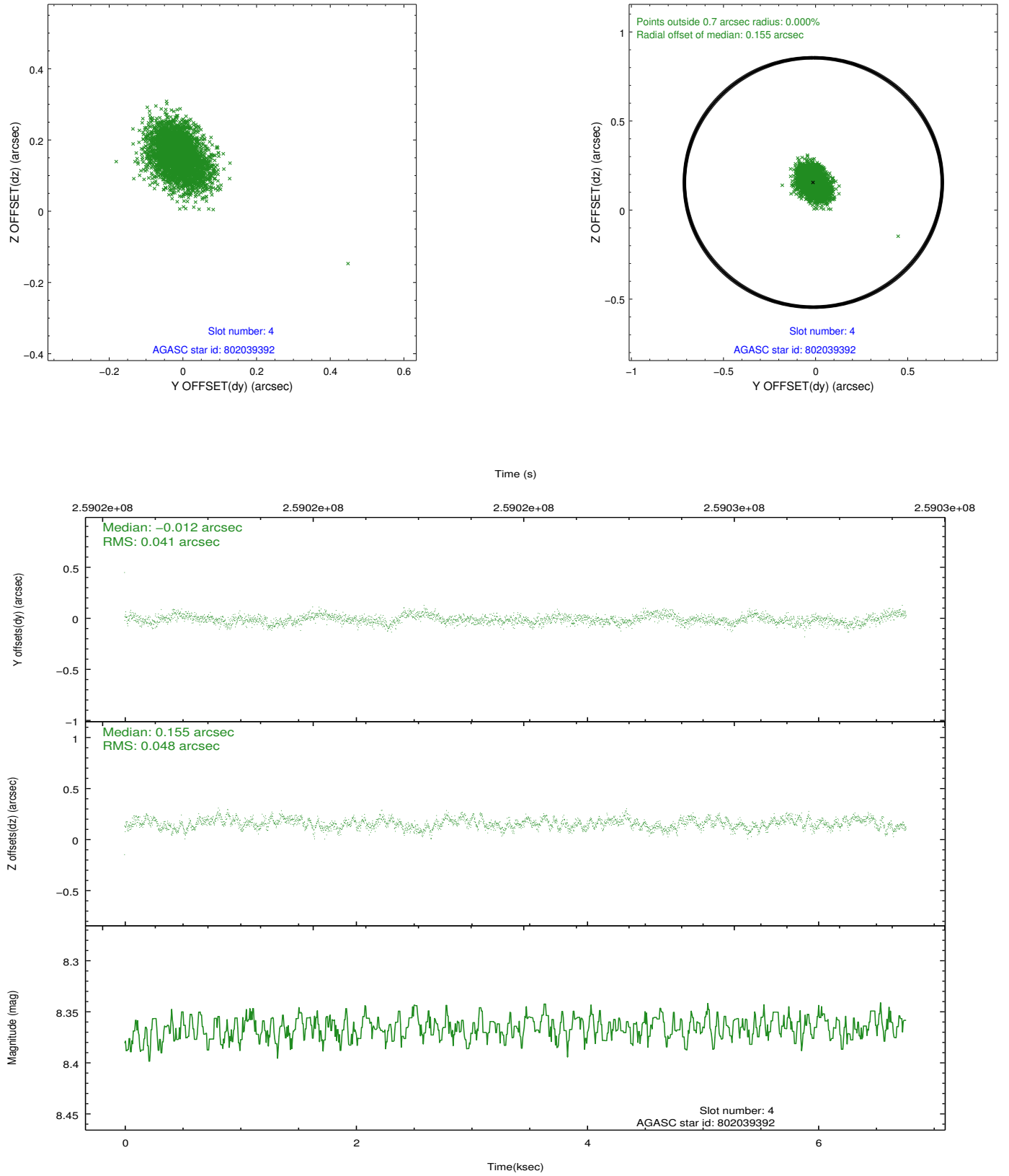
slot	status	id	mag	n_pts	med_dy	med_dz	dr1	dr2	ra	dec	mean_y	mean_z
0	FID	ACIS-S-2	7.10	1650	-0.064	-0.053	0.007	0.010	0.000000	0.000000	-759.10	-1730.60
1	FID	ACIS-S-4	7.21	1650	0.119	0.045	0.006	0.010	0.000000	0.000000	2153.95	177.11
2	FID	ACIS-S-5	7.24	1650	-0.087	0.017	0.007	0.011	0.000000	0.000000	-1810.88	171.70
3	GUIDE	802039312	8.42	3300	-0.223	-0.207	0.088	0.140	199.408712	-20.510040	747.18	2136.84
4	GUIDE	802039392	8.37	3299	-0.012	0.155	0.066	0.107	199.895767	-21.228025	-37.49	-819.89
5	GUIDE	802039528	8.82	3300	0.114	0.049	0.072	0.115	199.336074	-21.025261	-778.26	1054.15
6	GUIDE	802040912	8.94	3299	0.188	-0.113	0.088	0.140	198.983932	-20.928874	-1330.71	2157.02
7	GUIDE	803736416	7.78	3298	-0.074	0.117	0.062	0.100	200.127231	-20.880901	1408.06	-546.16

## 2.4 Star Slots

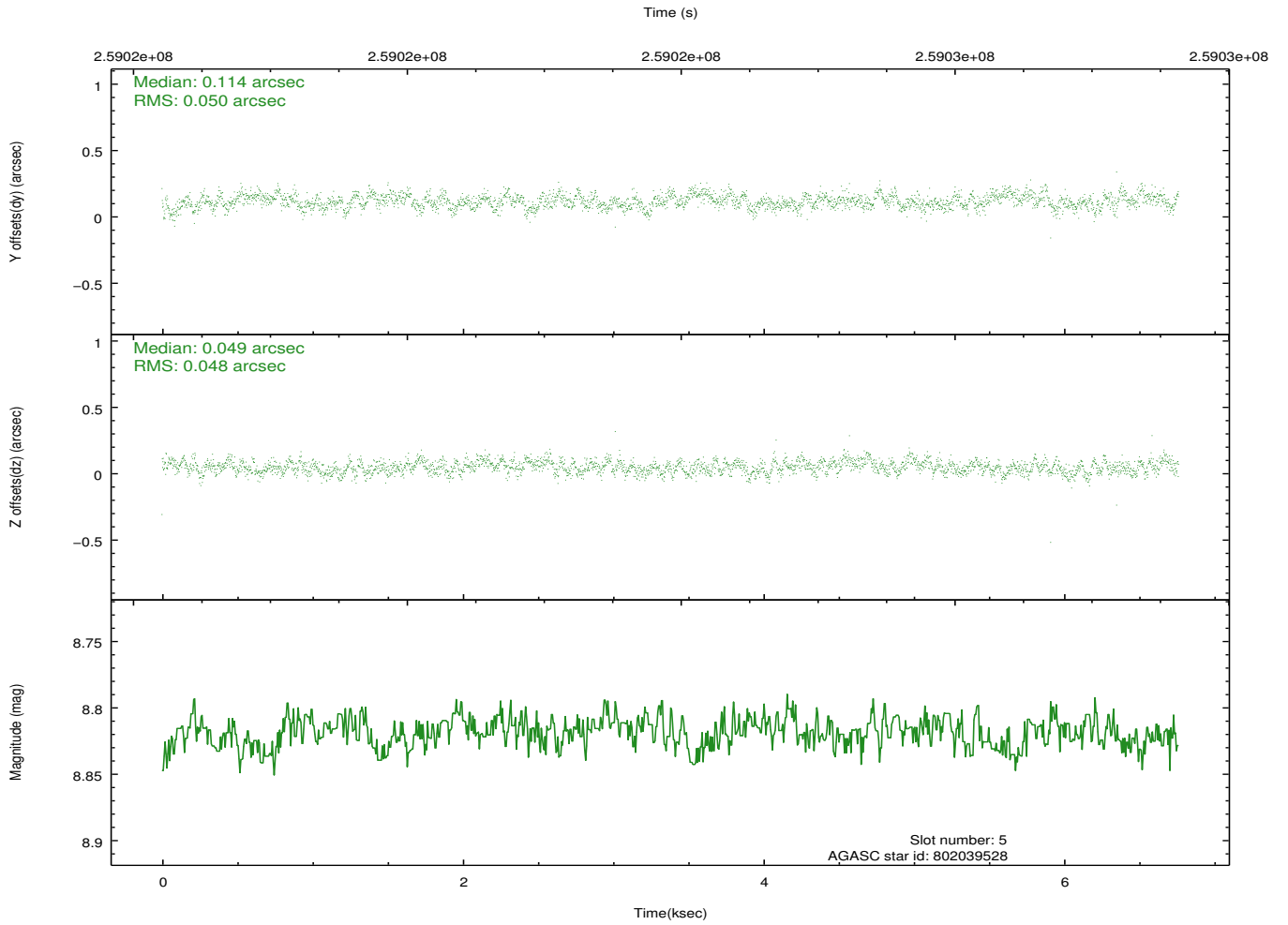
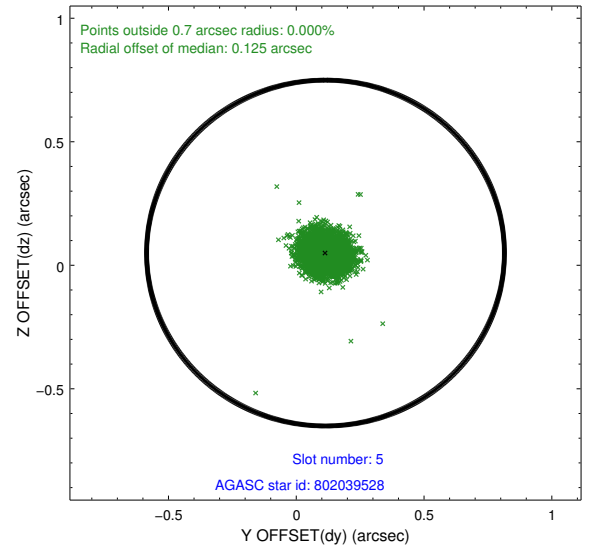
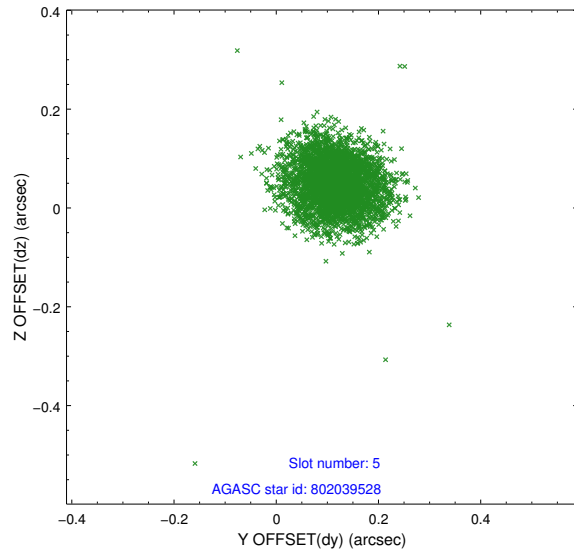
### 2.4.1 Slot 3



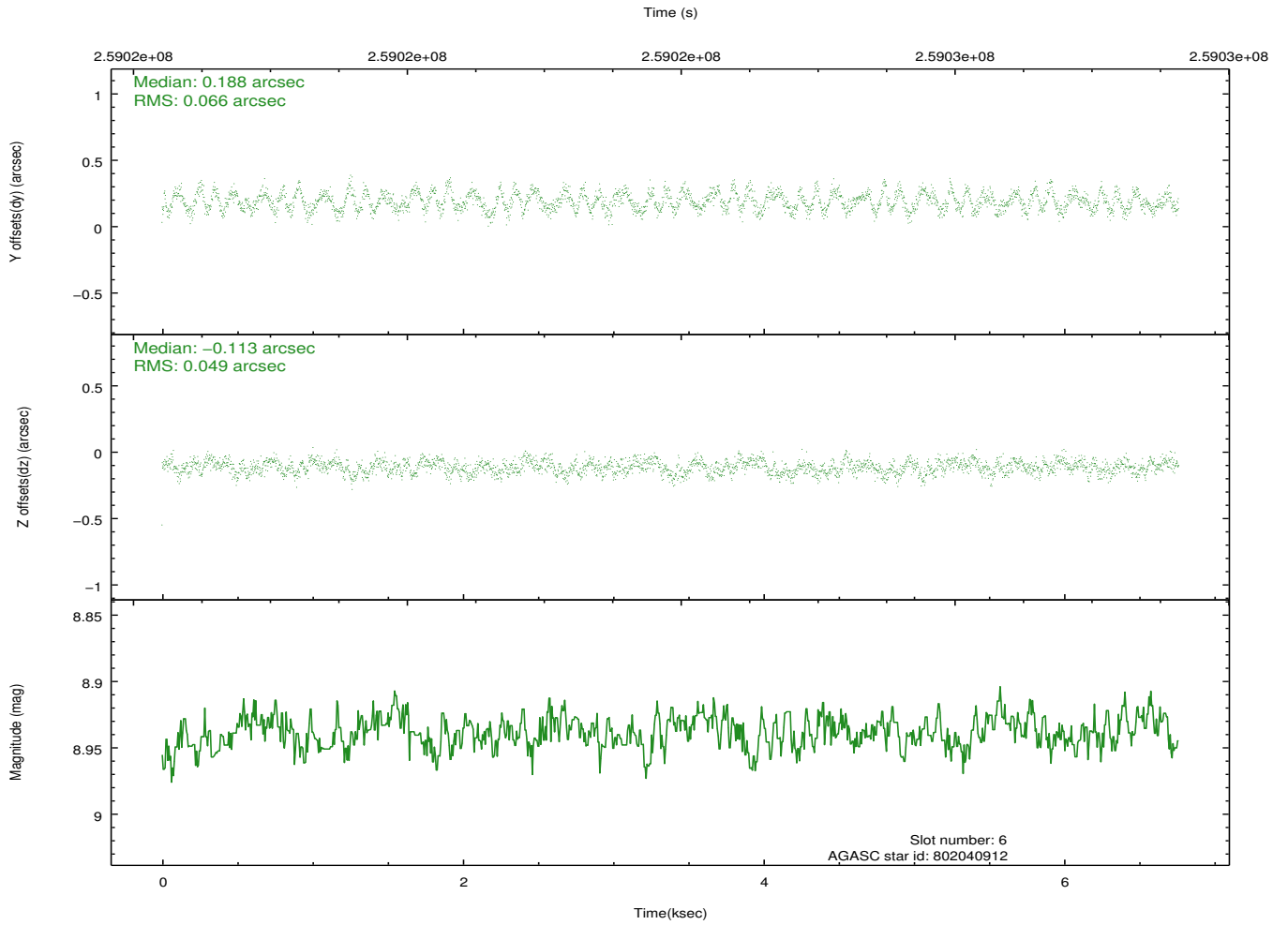
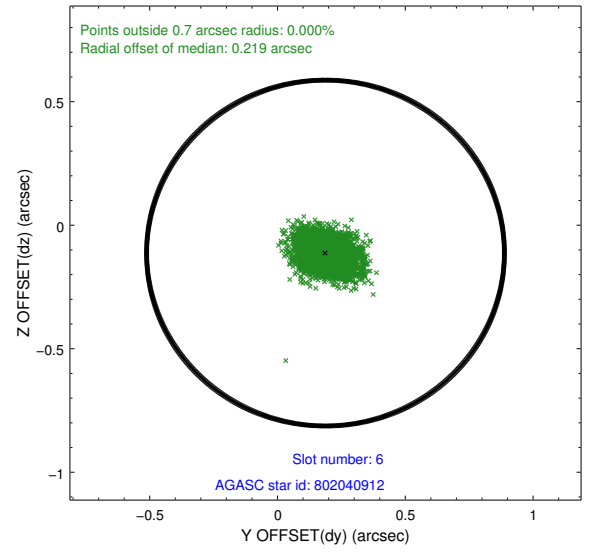
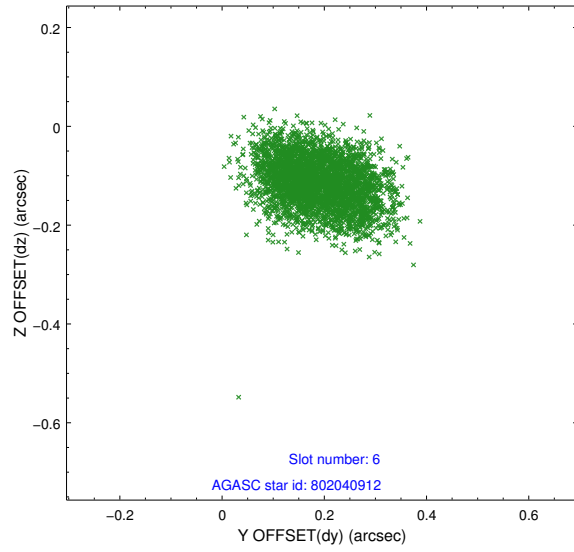
## 2.4.2 Slot 4



### 2.4.3 Slot 5

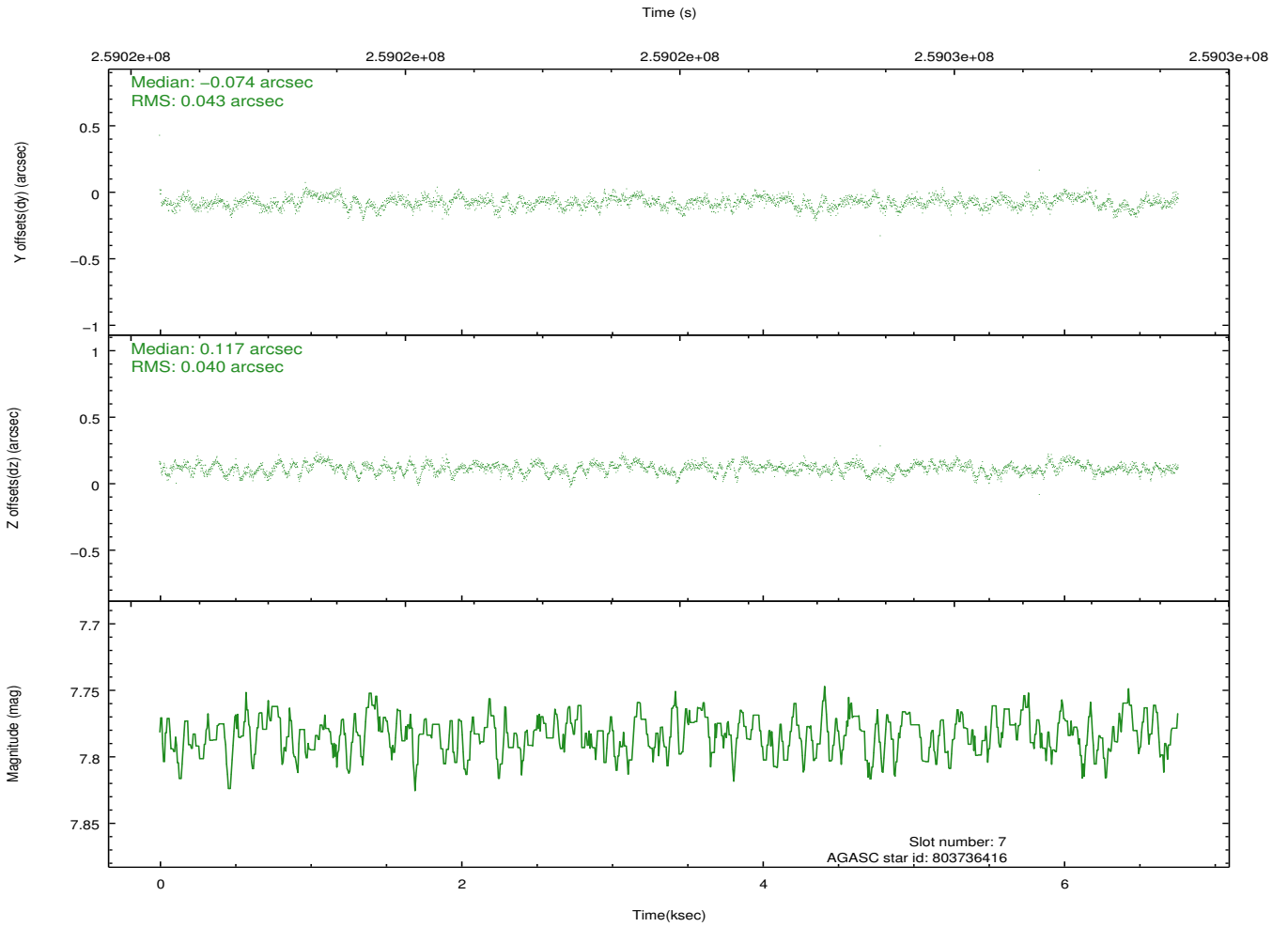
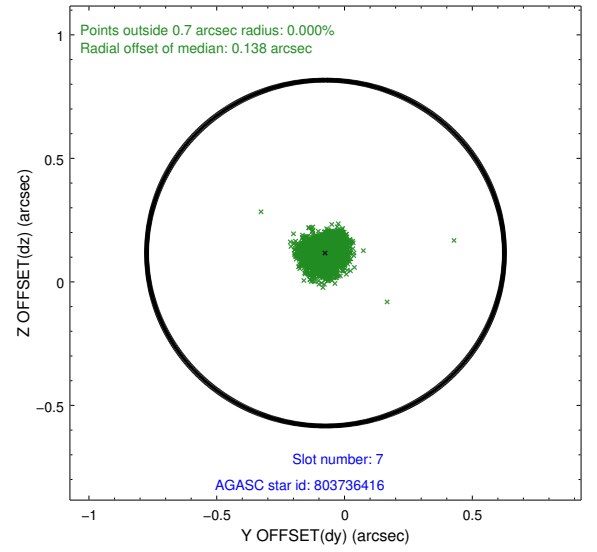
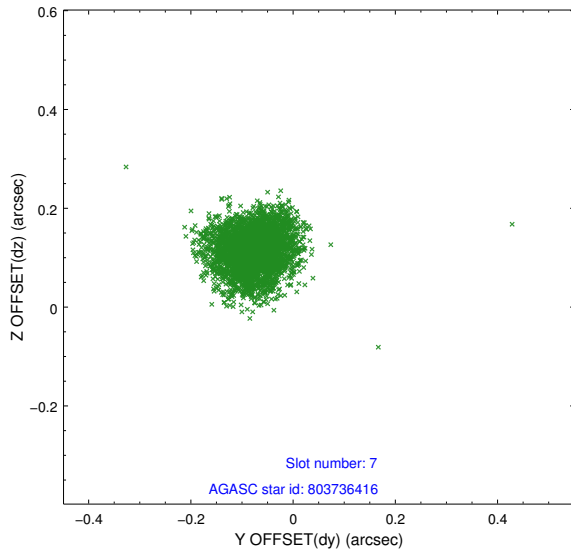


## 2.4.4 Slot 6



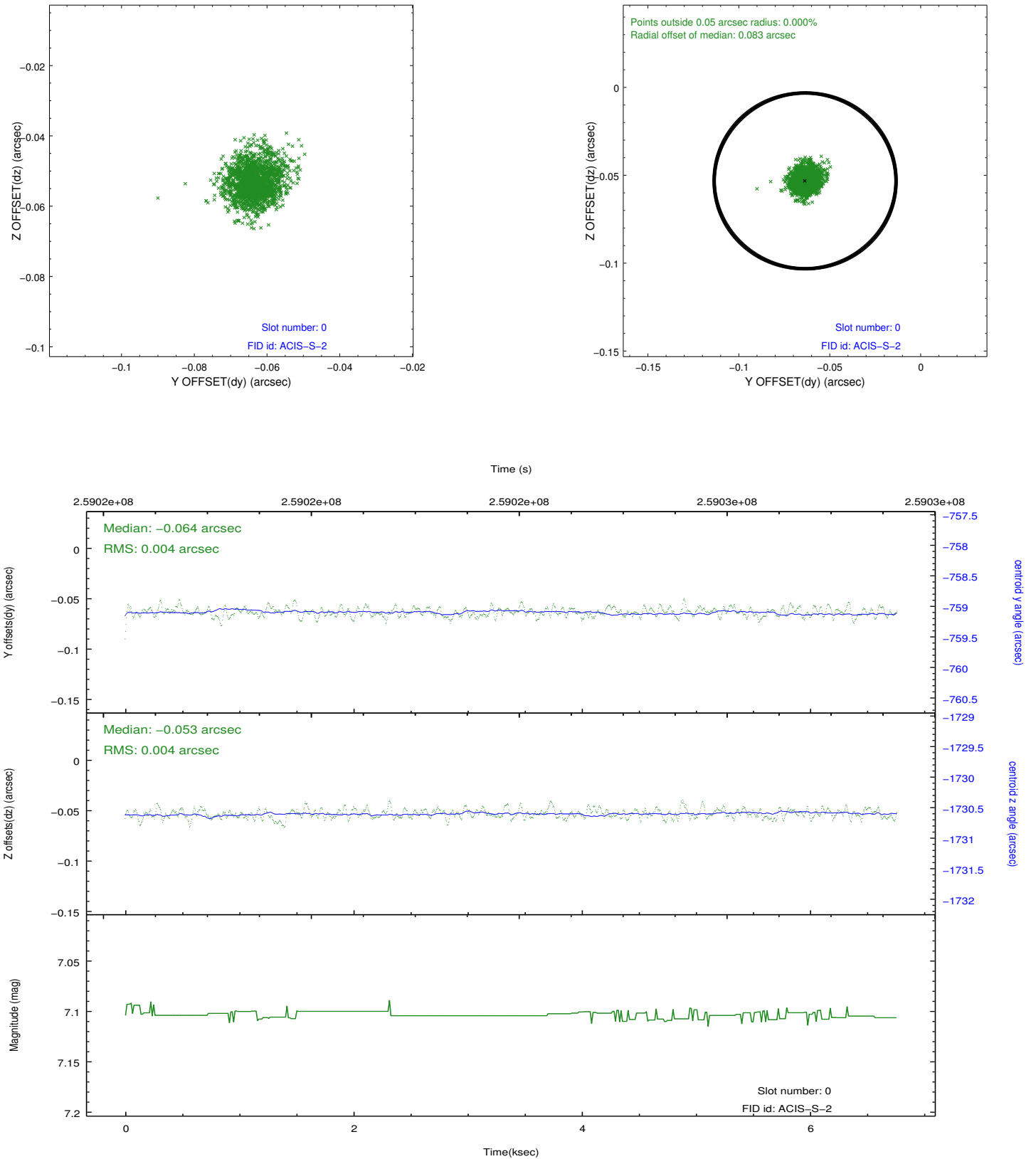


## 2.4.5 Slot 7

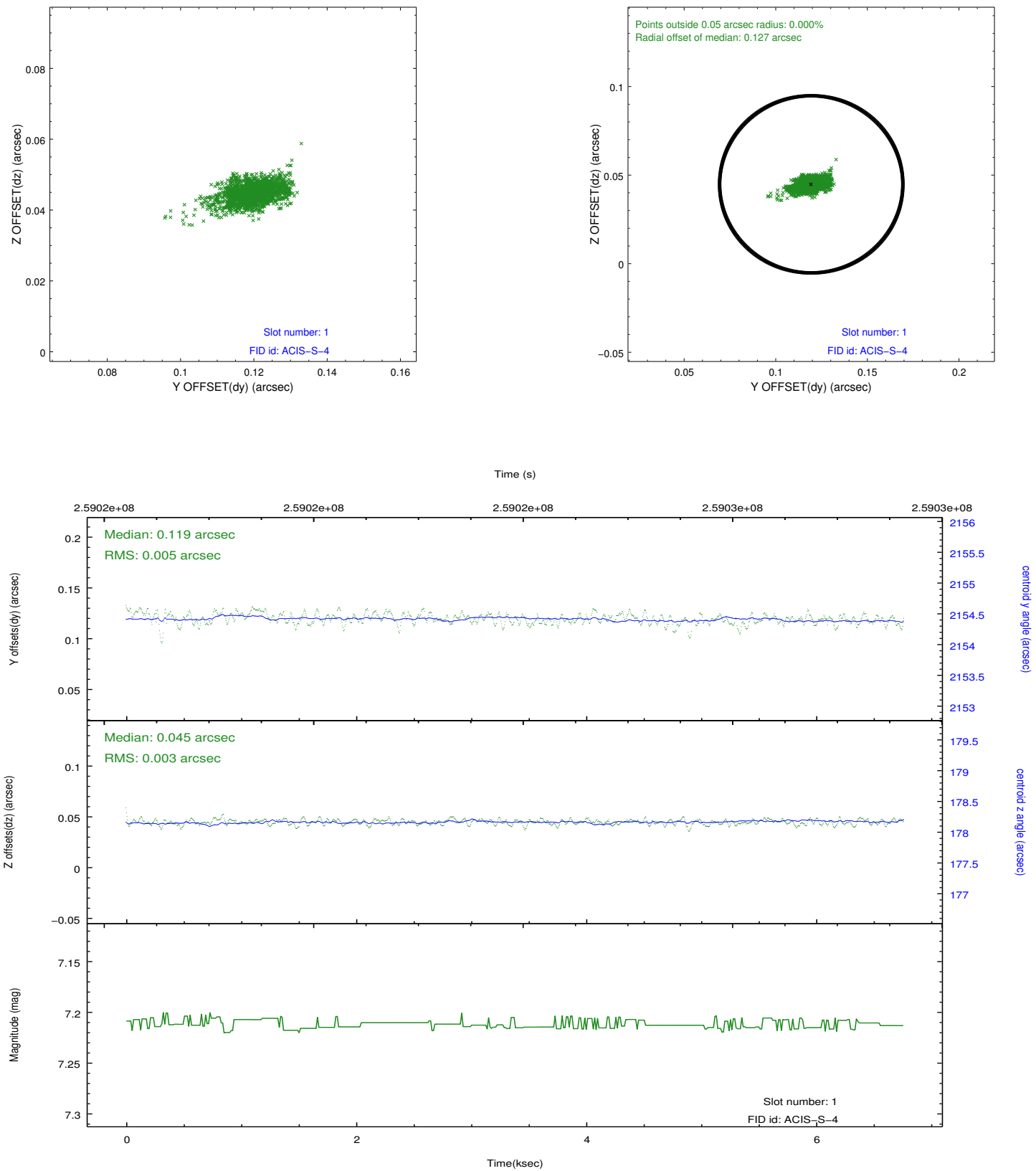


## 2.5 FID Slots

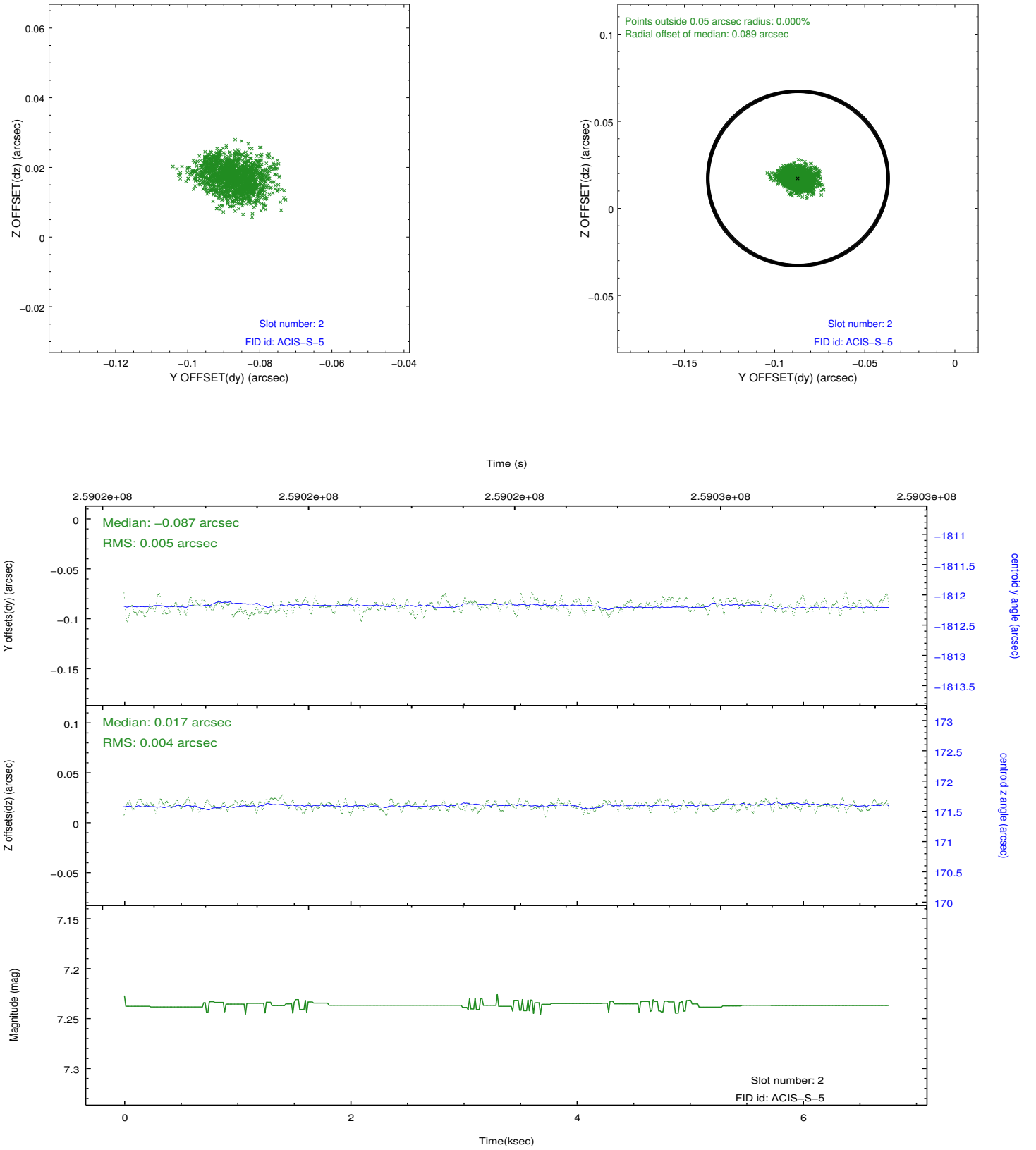
### 2.5.1 Slot 0



## 2.5.2 Slot 1



### 2.5.3 Slot 2



## A Summary

### A.1 Status

V&V Scientist	Jen Lauer
V&V Date (YYYY-MM-DD)	2012.03.29
V&V Edition	1
V&V Disposition and Status	OK
V&V Charge Time	6.75519997

### A.2 Comments