

V&V Reference Report

L2 ASCDS Version : 8.4.4

Observation 7147 - L2 Version 3
Chandra X-Ray Center

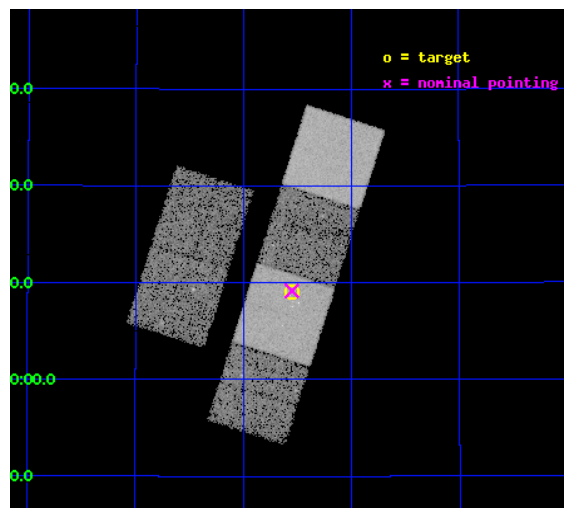
L2 Processing Date : Apr 19 2012

Contents

1	Front	2
2	OBI	3
2.1	OBI	3
2.1.1	Images	3
2.1.2	Bias	3
2.1.3	Parameters	4
2.1.4	Events	4
2.2	Compared Parameters	5
2.3	Aspect	6
2.4	Star Slots	9
2.4.1	Slot 3	9
2.4.2	Slot 4	10
2.4.3	Slot 5	11
2.4.4	Slot 6	12
2.4.5	Slot 7	13
2.5	FID Slots	14
2.5.1	Slot 0	14
2.5.2	Slot 1	15
2.5.3	Slot 2	16
A	Summary	17
A.1	Status	17
A.2	Comments	17

1 Front

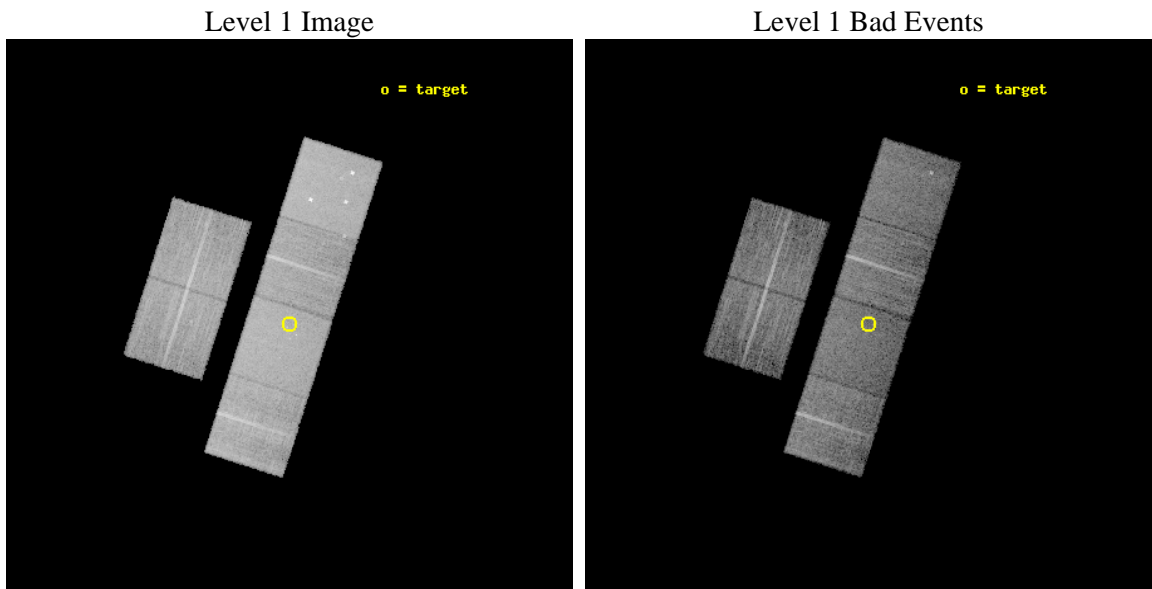
seq_num	600585	Sequence number
obs_id	7147	Observation id
title	Searching for accreting black holes in nuclear star clusters	Propo
observer	Dr Roberto Soria	Principal investigator
object	NGC4618	Source name
dtcycle	0	
cycle	P	events from which exps? Prim/Second/Both
ra_targ	190.38625	Observer's specified target RA [deg]
dec_targ	41.151056	Observer's specified target Dec [deg]
ra_nom	190.38779168315	Nominal RA [deg]
dec_nom	41.152795622423	Nominal Dec [deg]
roll_nom	107.75995876394	Nominal Roll [deg]
revision	3	Processing version of data
ontime	9430.3999649286	Sum of GTIs [s]
livetime	9310.9865622676	Livetime [s]
ontime2	9430.3999649286	Sum of GTIs [s]
ontime3	9430.3999649286	Sum of GTIs [s]
ontime5	9430.3999649286	Sum of GTIs [s]
ontime6	9430.3999649286	Sum of GTIs [s]
ontime7	9430.3999649286	Sum of GTIs [s]
ontime8	9430.3999649286	Sum of GTIs [s]
l2events	141684	Number of level 2 events



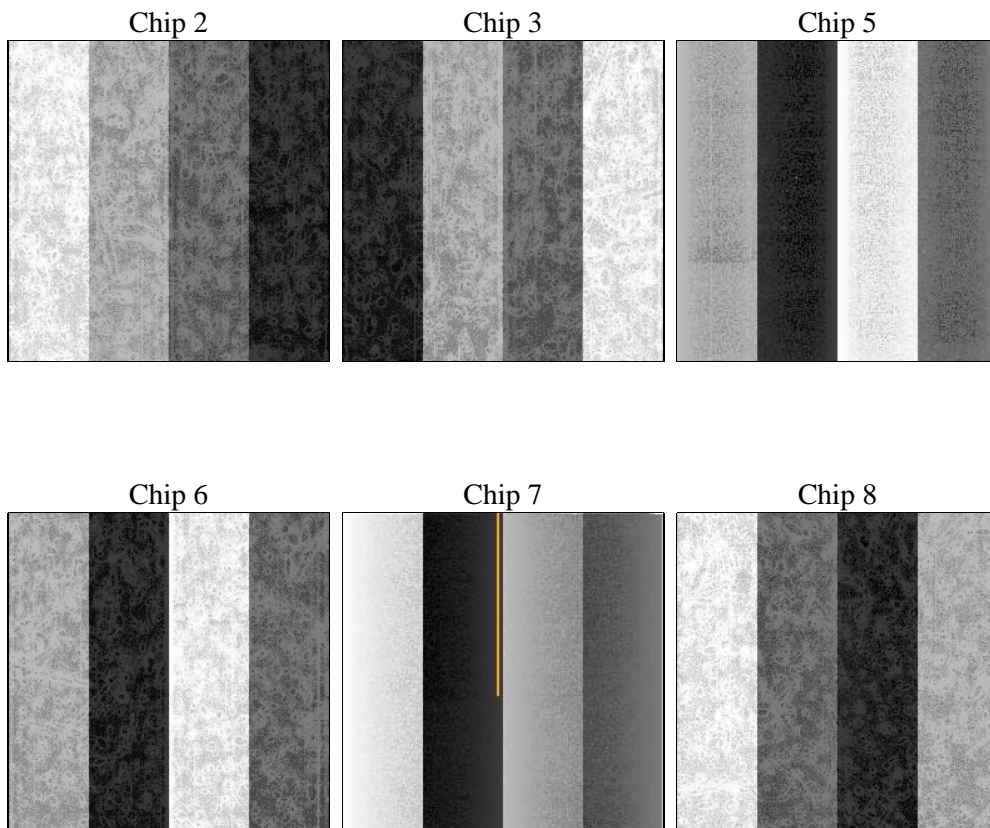
2 OBI

2.1 OBI

2.1.1 Images



2.1.2 Bias



2.1.3 Parameters

obi_num	0	Obi number	sched_exp_time	9250.000000	[s] Scheduled observation exposure time
ascdsver	8.4.4	Processing system revision	ontime	9430.3999649286	Sum of GTIs [s]
caldsver	4.4.9	 	ontime2	9430.3999649286	Sum of GTIs [s]
date	2012-04-19T14:40:38	Date and time of file creation	ontime3	9430.3999649286	Sum of GTIs [s]
revision	3	Processing version of data	ontime5	9430.3999649286	Sum of GTIs [s]
			ontime6	9430.3999649286	Sum of GTIs [s]
			ontime7	9430.3999649286	Sum of GTIs [s]
			ontime8	9430.3999649286	Sum of GTIs [s]
			l1events	679479	Number of level 1 events

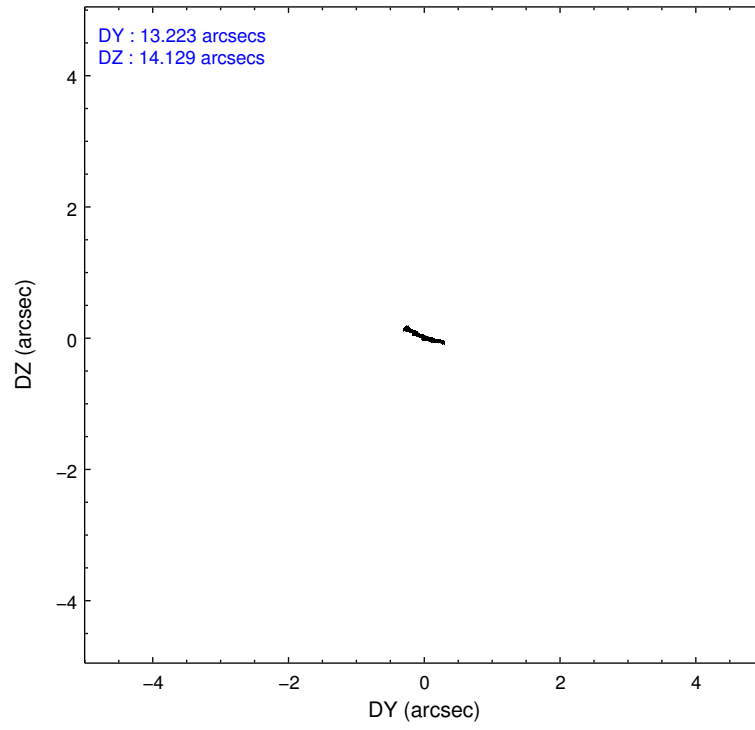
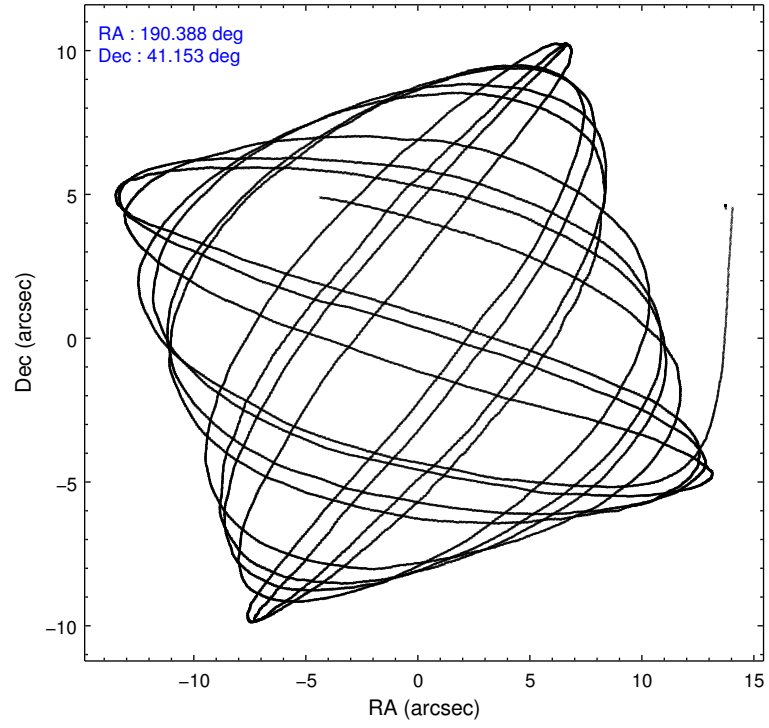
2.1.4 Events

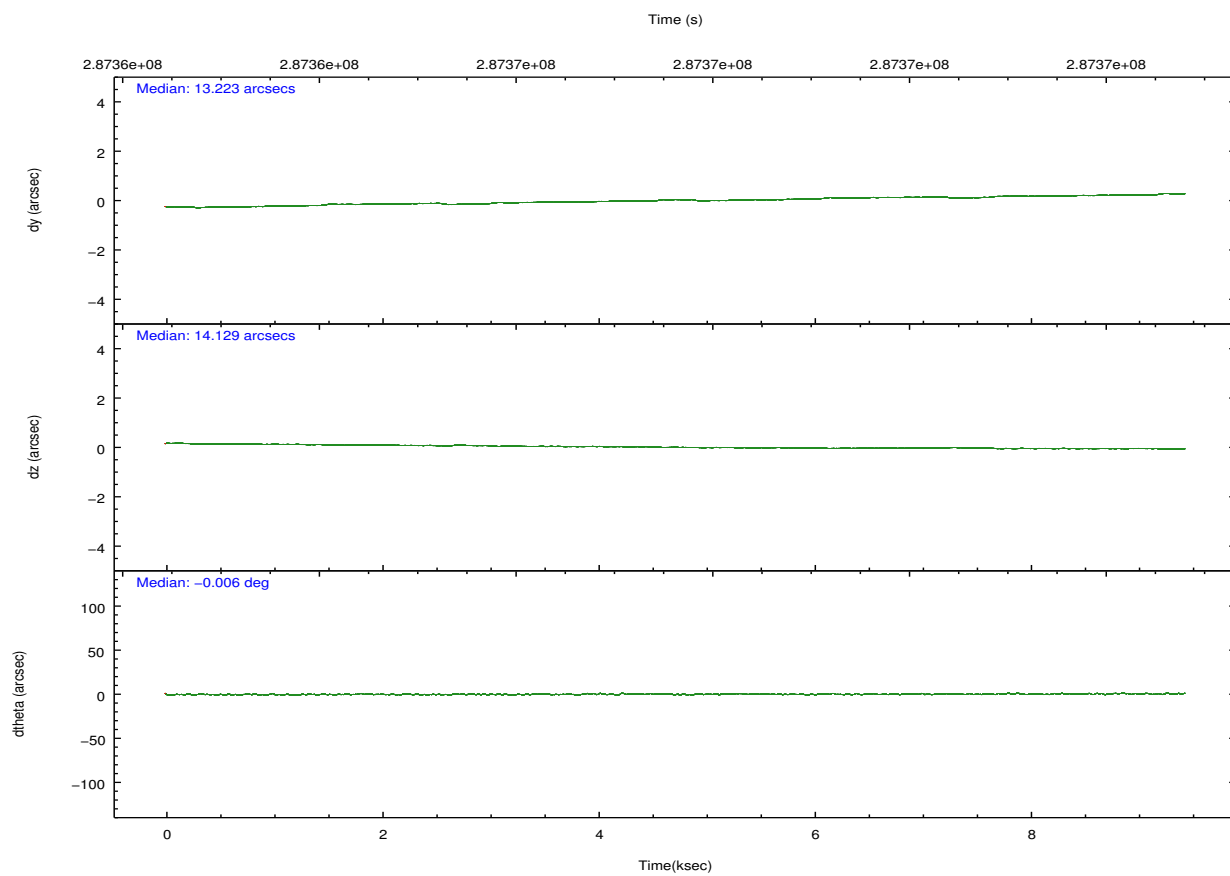
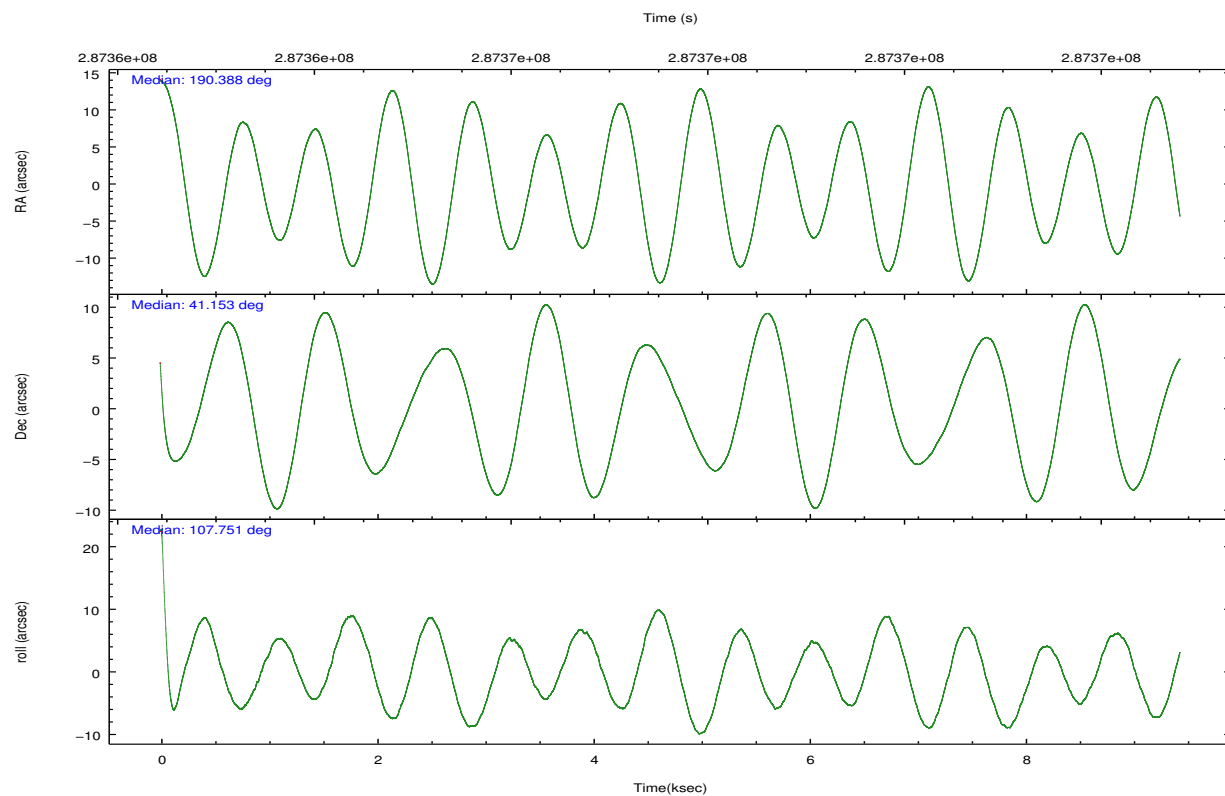
	ccd 2	ccd 3	ccd 5	ccd 6	ccd 7	ccd 8		ccd 2	ccd 3	ccd 5	ccd 6	ccd 7	ccd 8
level 1 events	95372	91758	146583	99108	128989	117669	grade 0 events	4745	5071	8059	4620	4760	8578
rejected events	85375	81433	83793	88529	79705	93544		4%	5%	5%	4%	3%	7%
rejected %	89%	88%	57%	89%	61%	79%	grade 1 events	64	70	222	49	127	94
								0%	0%	0%	0%	0%	0%
							grade 2 events	2311	2117	21163	2443	10697	5736
								2%	2%	14%	2%	8%	4%
							grade 3 events	1058	1127	2337	1078	4583	2854
								1%	1%	1%	1%	3%	2%
							grade 4 events	1008	1024	2241	1044	4677	2598
								1%	1%	1%	1%	3%	2%
							grade 5 events	3832	4354	10153	4293	12191	5763
								4%	4%	6%	4%	9%	4%
							grade 6 events	1858	1965	34976	2385	29142	6553
								1%	2%	23%	2%	22%	5%
							grade 7 events	80496	76030	67432	83196	62812	85493
								84%	82%	46%	83%	48%	72%

2.2 Compared Parameters

Parameter	Planned	Actual	Parameter	Planned	Actual
Instrument	ACIS	ACIS	Obspar format version number	7	7
Detector	ACIS-235678	ACIS-235678	Obspar file type	PREDICTED	ACTUAL
Grating	NONE	NONE	Obspar update status	NONE	UPDATED
Data mode	FAINT	FAINT	Number of optional ACIS chips dropped	0	0
Observation mode	POINTING	POINTING	On-chip summing requested	N	N
[deg] Pointing RA	190.414959	190.387791683146	Subarray requested	NONE	NONE
[deg] Pointing Dec	41.134716	41.15279562242327	Alternating exposures requested	N	N
[deg] Pointing Roll	107.585406	107.7599587639366	[s] Primary exposure time	0.000000	3.2
[mm] SIM focus pos	-0.684267	-0.6828225247311905			
[mm] SIM defocus	0	0.001444936568705701			
[mm] SIM translation stage pos	-190.132523	-190.1425803651734			
[mm] SIM translation stage offset	0	0.01005778216563158			
[s] Observation start time (MET)	287363082.184000	287361557.8271			
Observation start date	2007-02-08T23:03:37	2007-02-08T22:39:17			
[s] Observation end time (MET)	287372332.184000	287373649.75268			
Observation end date	2007-02-09T01:37:47	2007-02-09T02:00:49			
Read mode	TIMED	TIMED			

2.3 Aspect



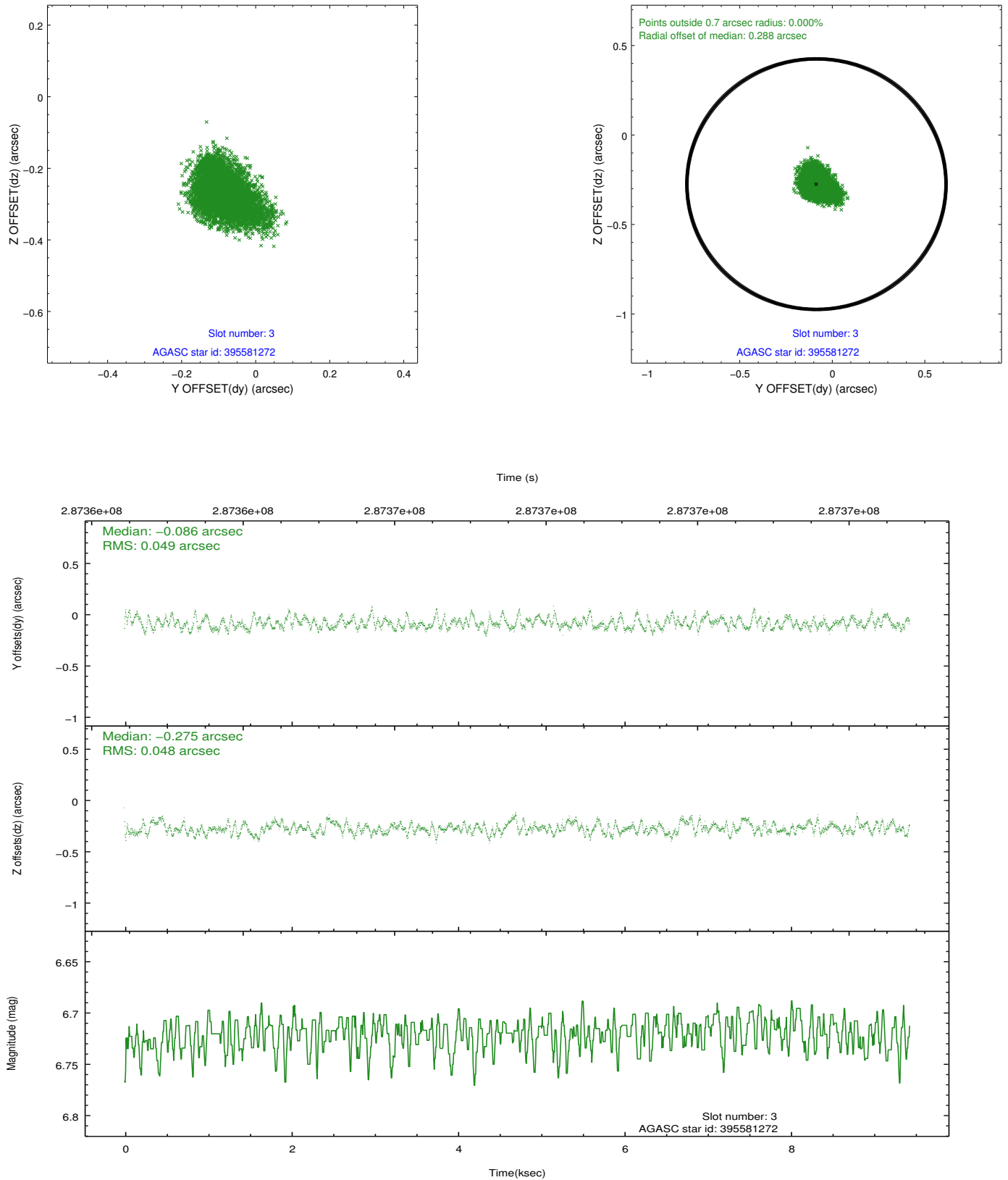


Slot Statistics

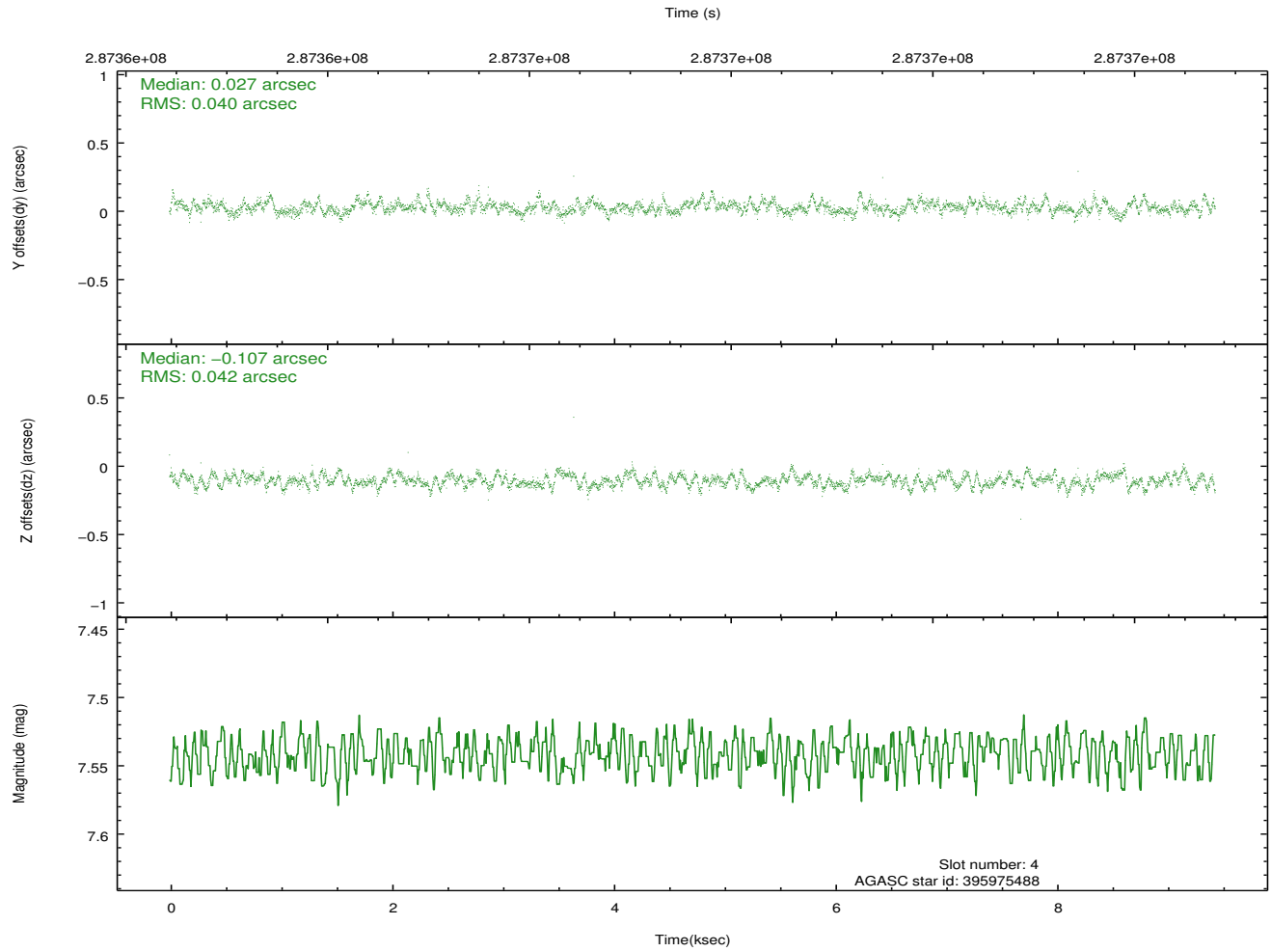
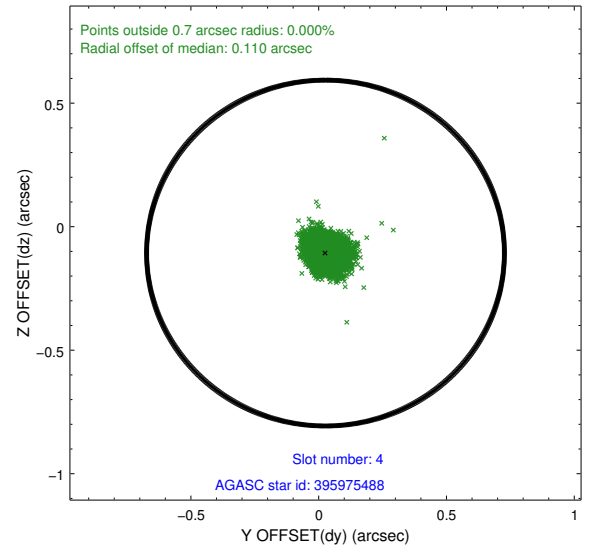
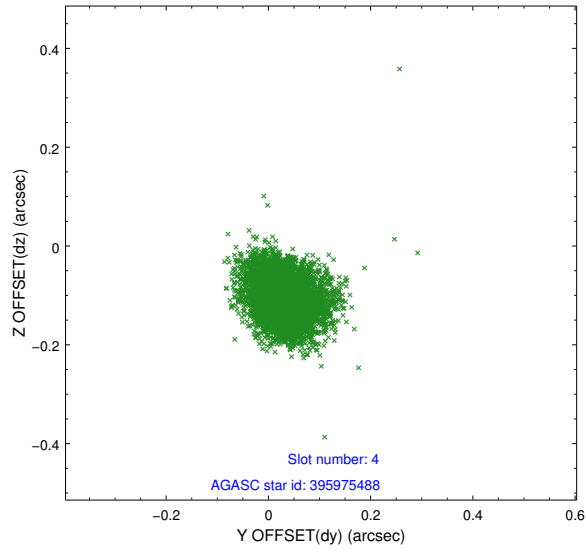
slot	status	id	mag	n_pts	med_dy	med_dz	dr1	dr2	ra	dec	mean_y	mean_z
0	FID	ACIS-S-1	7.19	2302	0.082	-0.040	0.006	0.011	0.000000	0.000000	930.00	-1731.12
1	FID	ACIS-S-5	7.24	2302	-0.144	0.056	0.009	0.015	0.000000	0.000000	-1818.92	165.92
2	FID	ACIS-S-6	7.34	2302	0.040	-0.004	0.009	0.013	0.000000	0.000000	394.87	810.48
3	GUIDE	395581272	6.72	4604	-0.086	-0.275	0.074	0.117	189.692824	40.874663	-291.08	2154.60
4	GUIDE	395975488	7.54	4604	0.027	-0.107	0.060	0.098	190.362345	40.579329	-1862.54	741.97
5	GUIDE	395979328	8.34	4604	0.099	-0.040	0.064	0.104	190.208900	40.521558	-1934.70	1203.79
6	GUIDE	395975000	9.71	4598	0.100	0.220	0.102	0.167	191.402111	40.812156	-1905.07	-2216.52
7	GUIDE	396237272	9.83	4600	-0.147	0.202	0.120	0.199	191.166711	41.526984	742.37	-2360.38

2.4 Star Slots

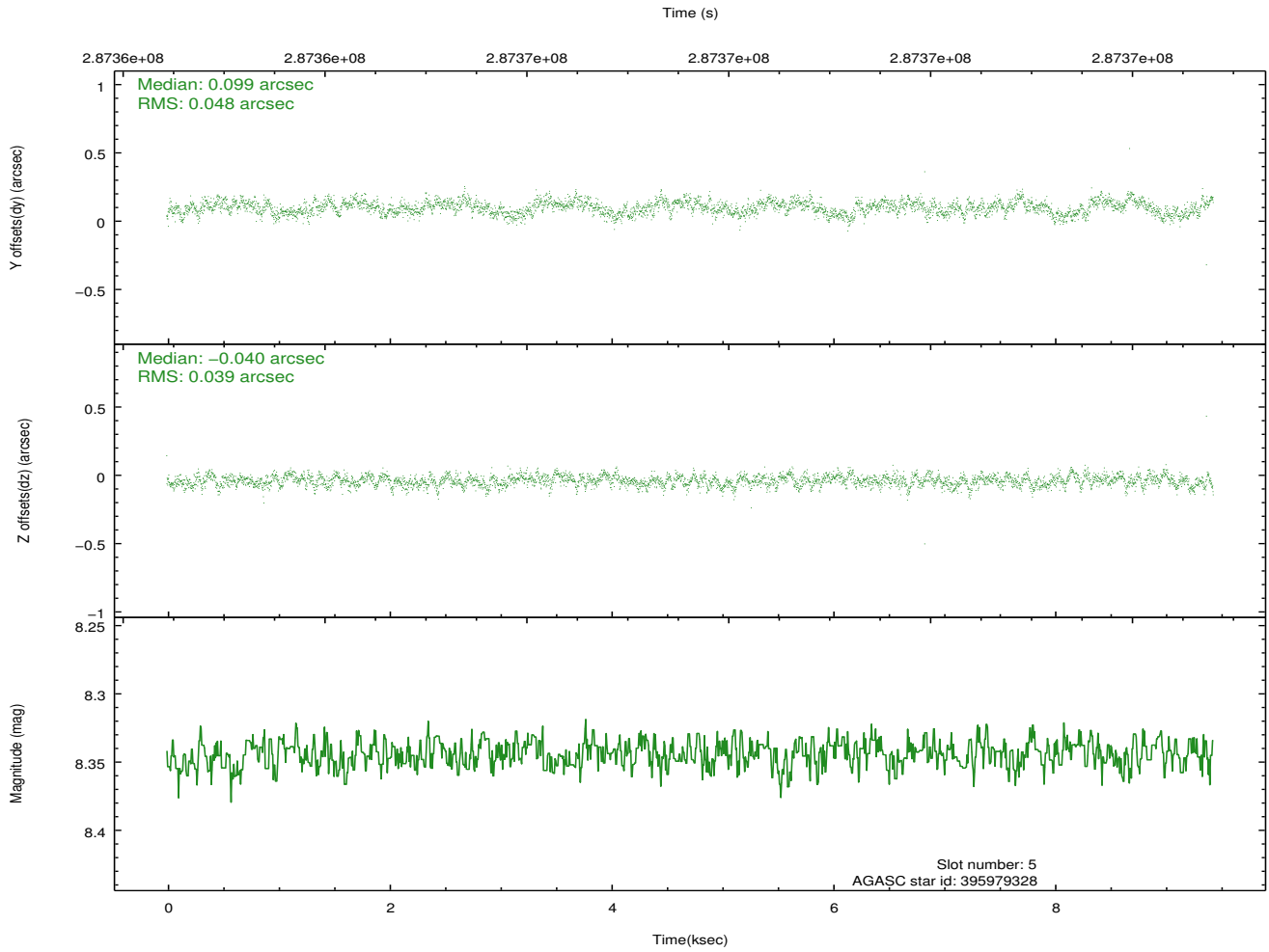
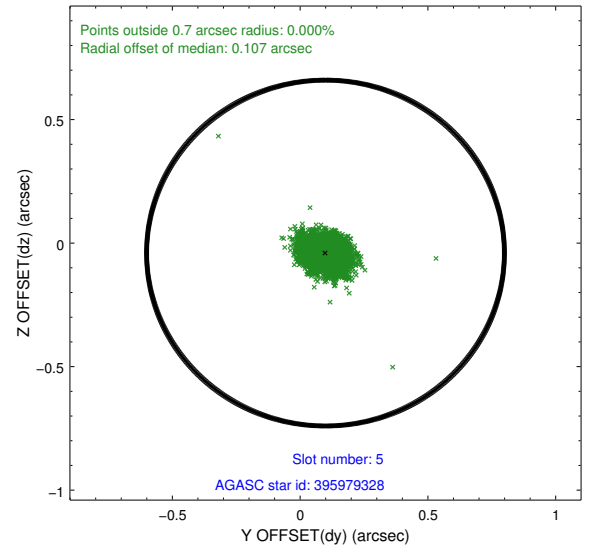
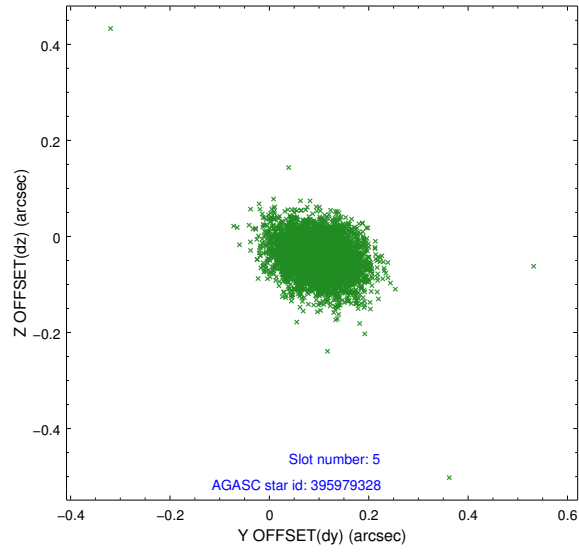
2.4.1 Slot 3



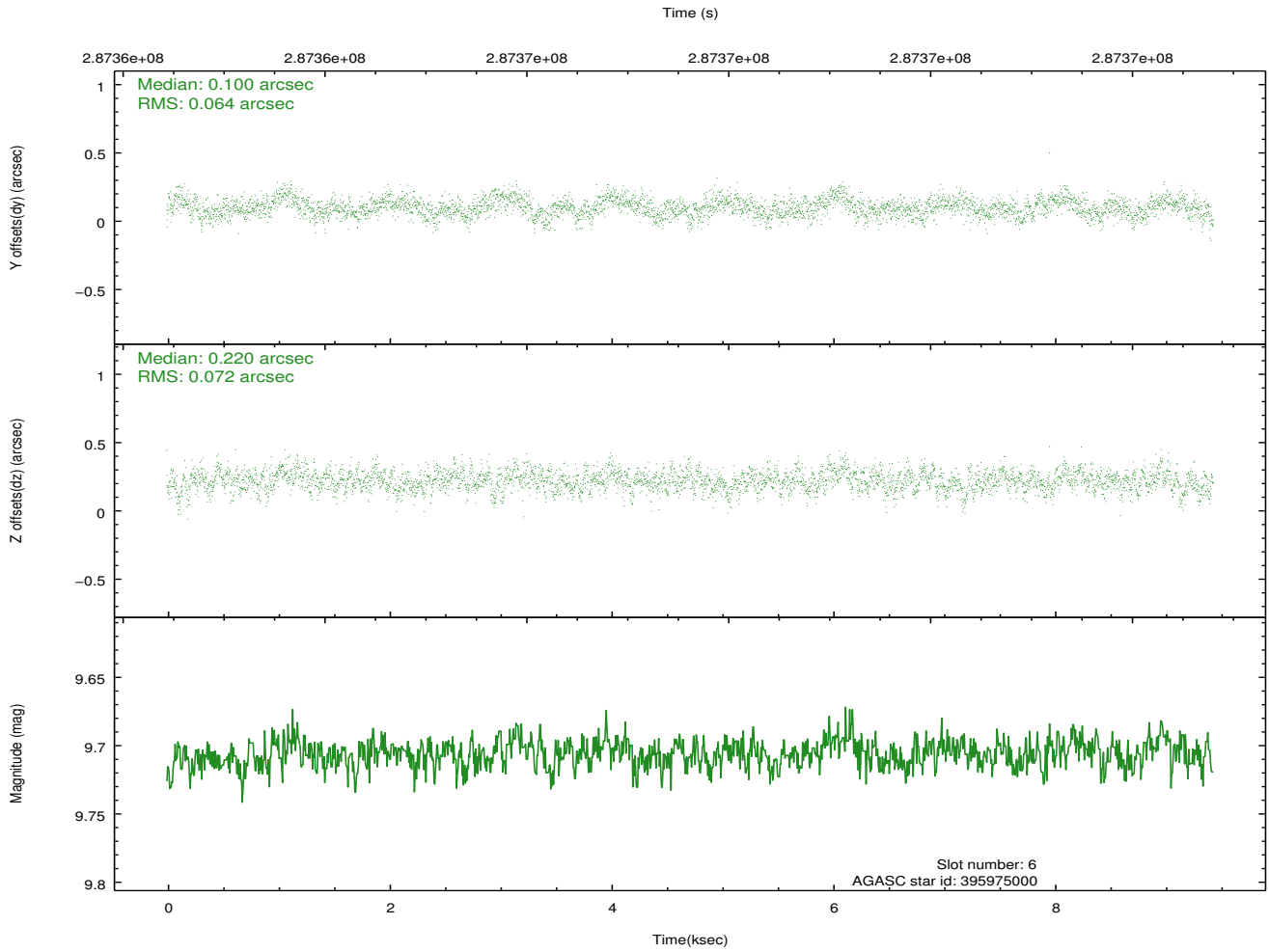
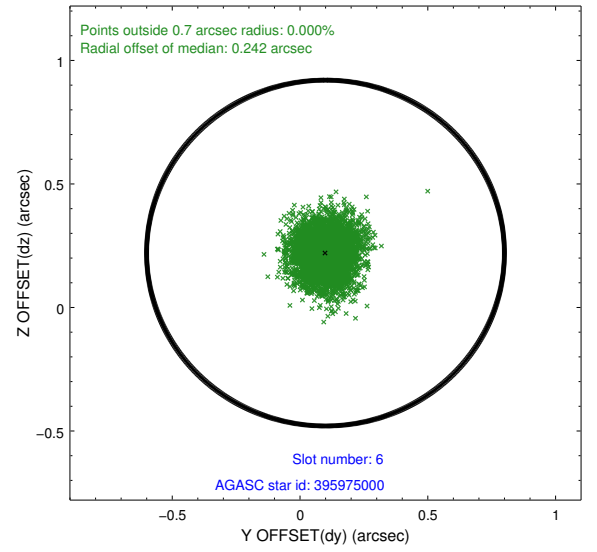
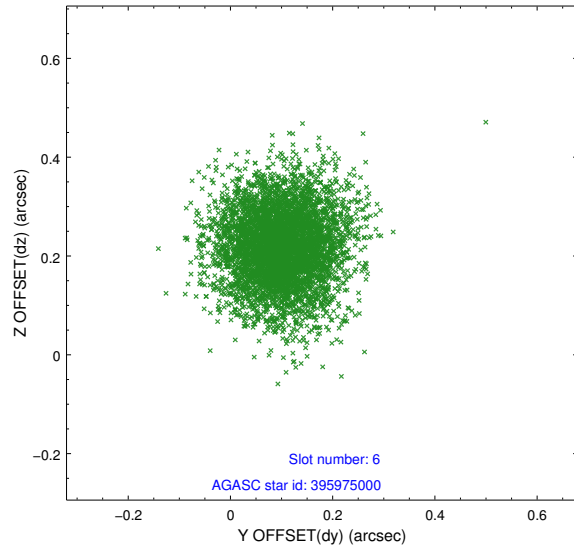
2.4.2 Slot 4



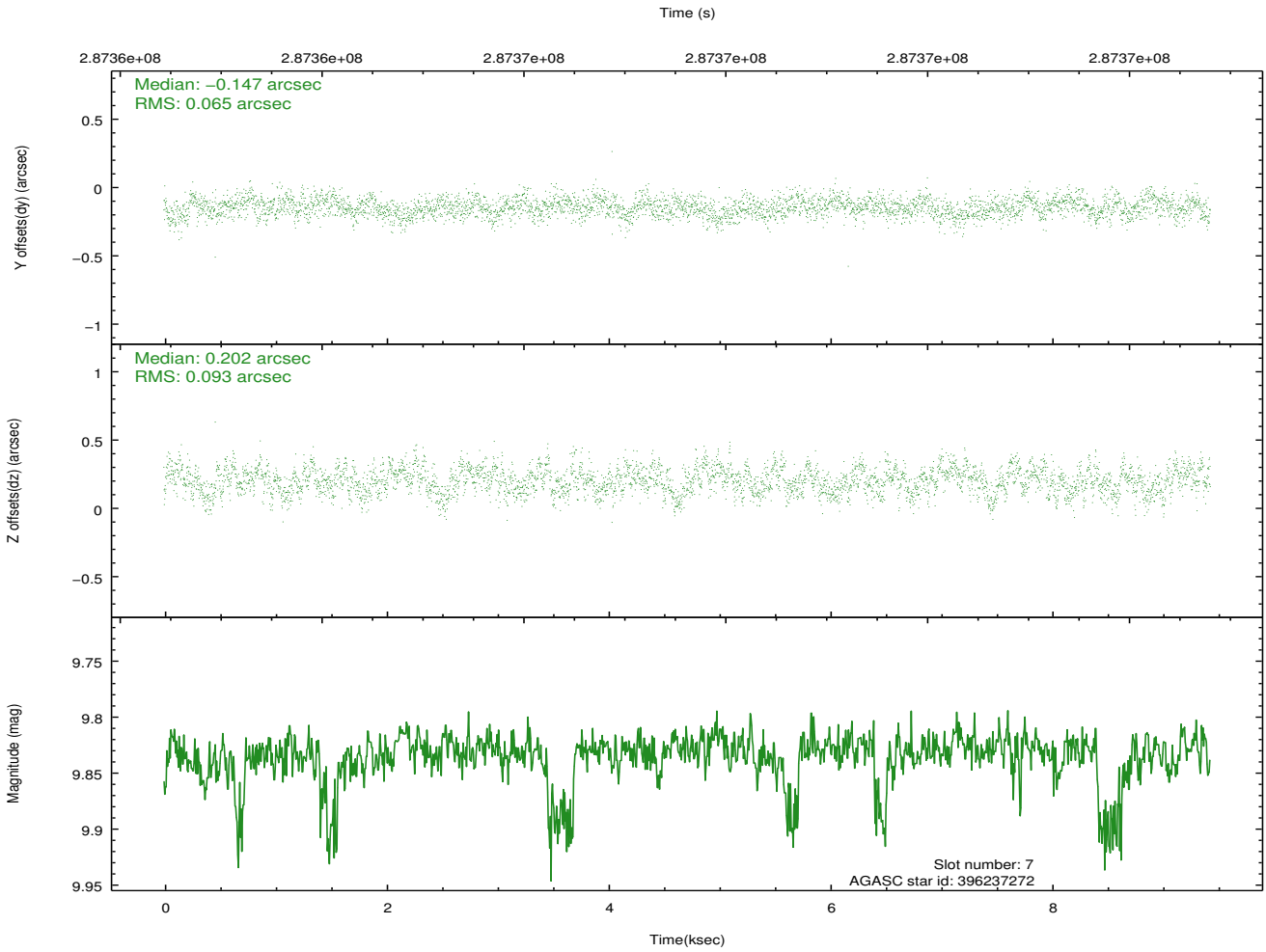
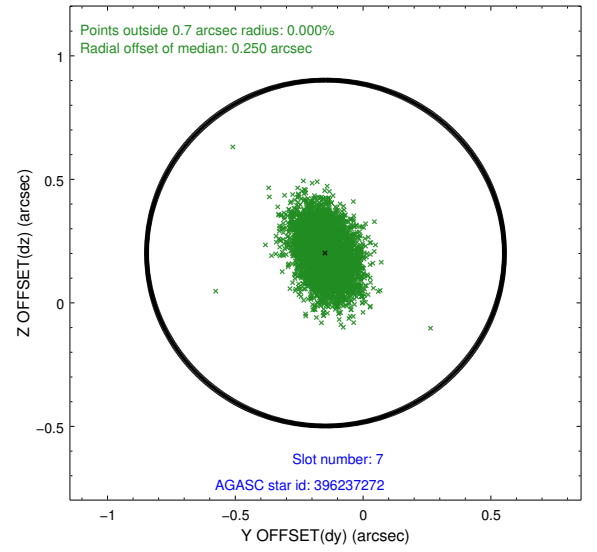
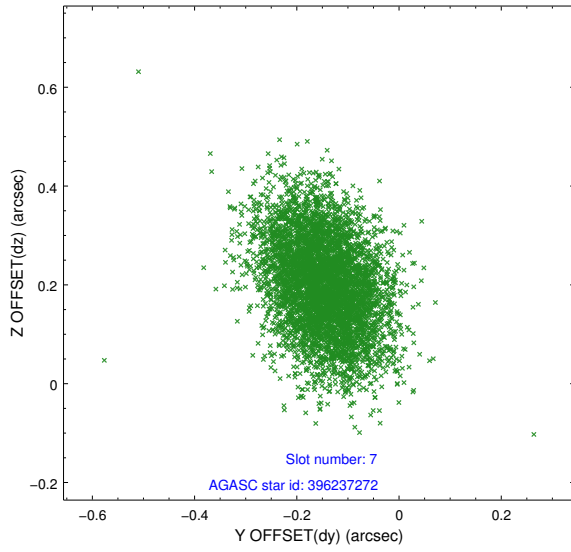
2.4.3 Slot 5



2.4.4 Slot 6

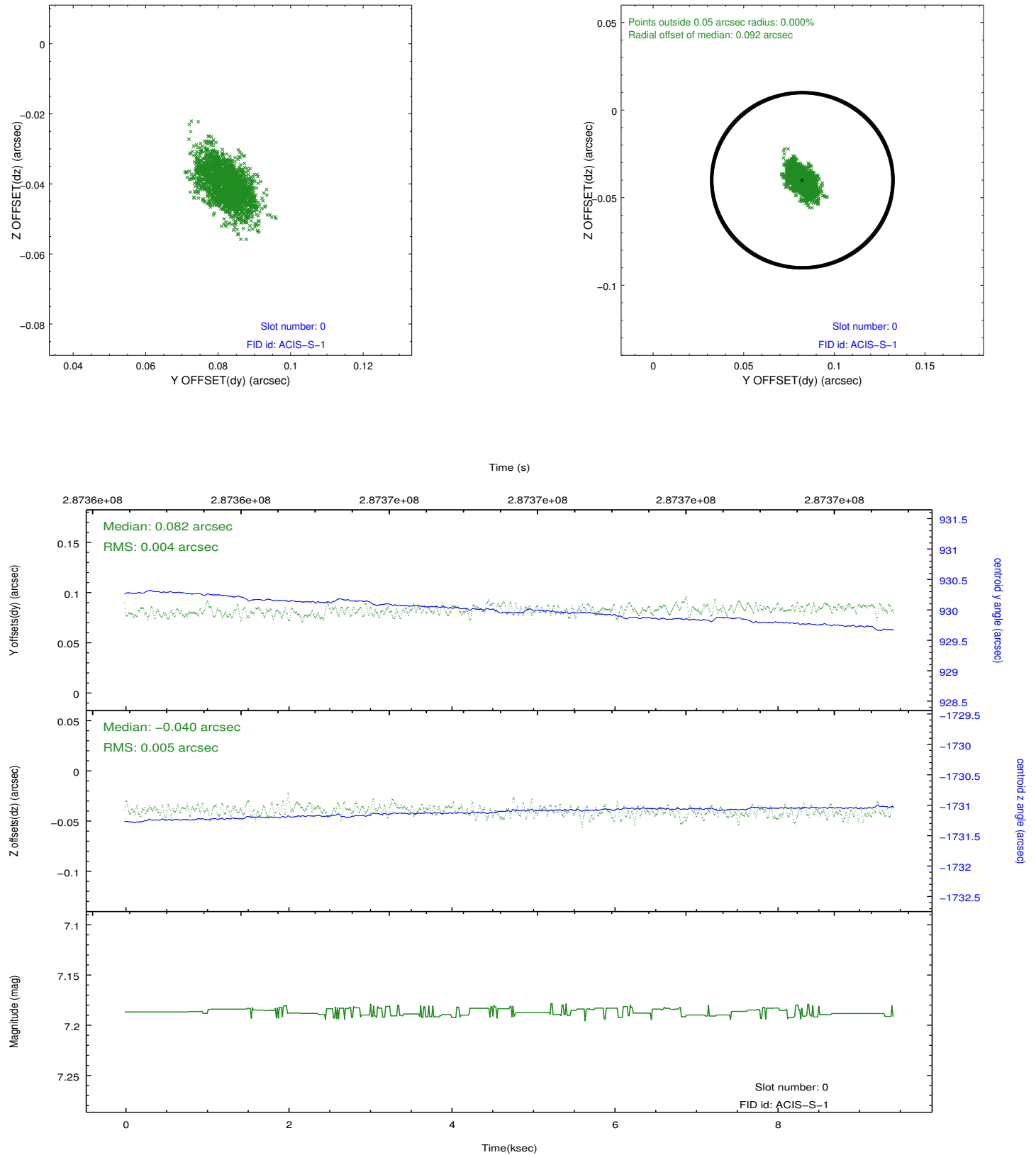


2.4.5 Slot 7

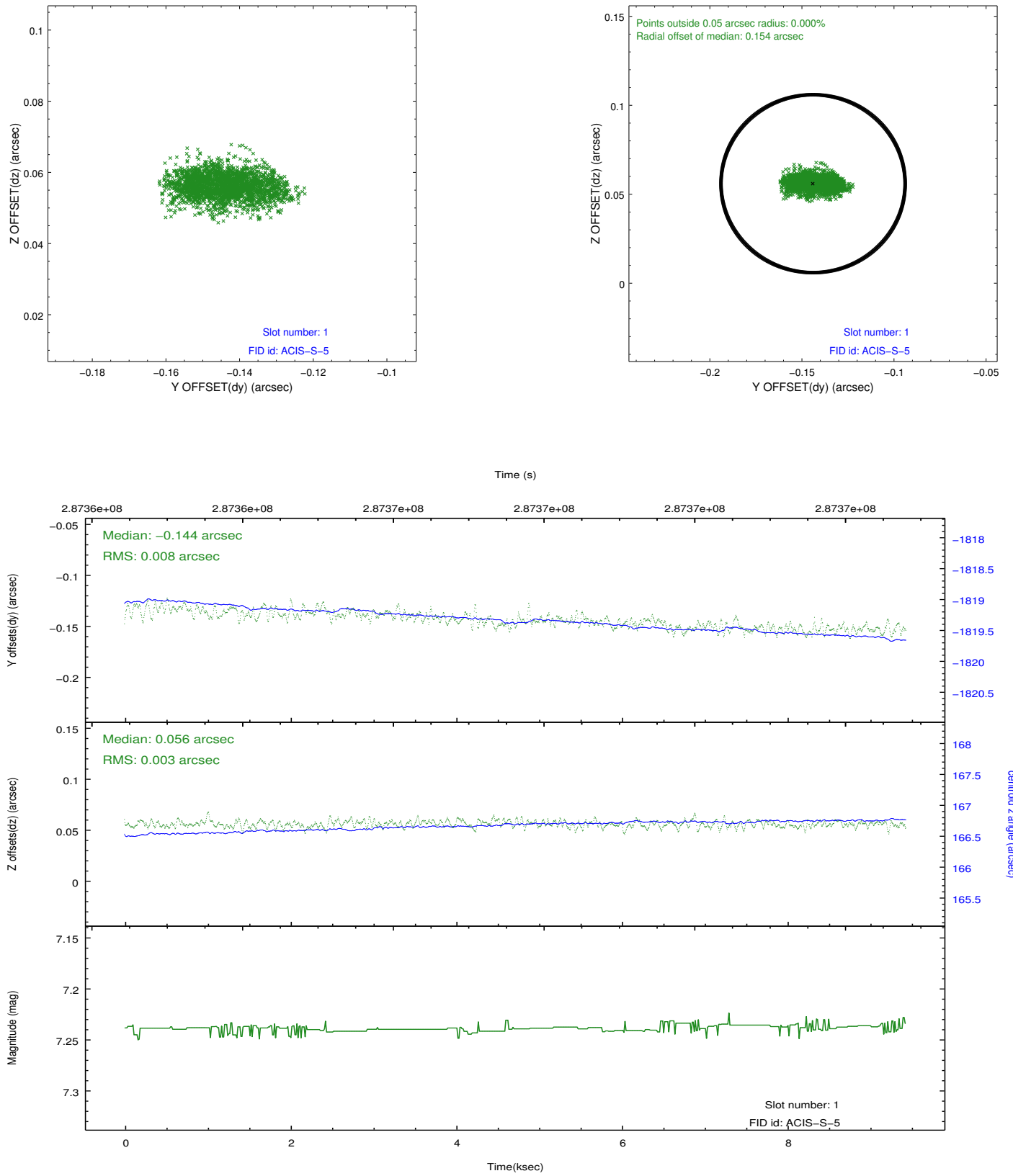


2.5 FID Slots

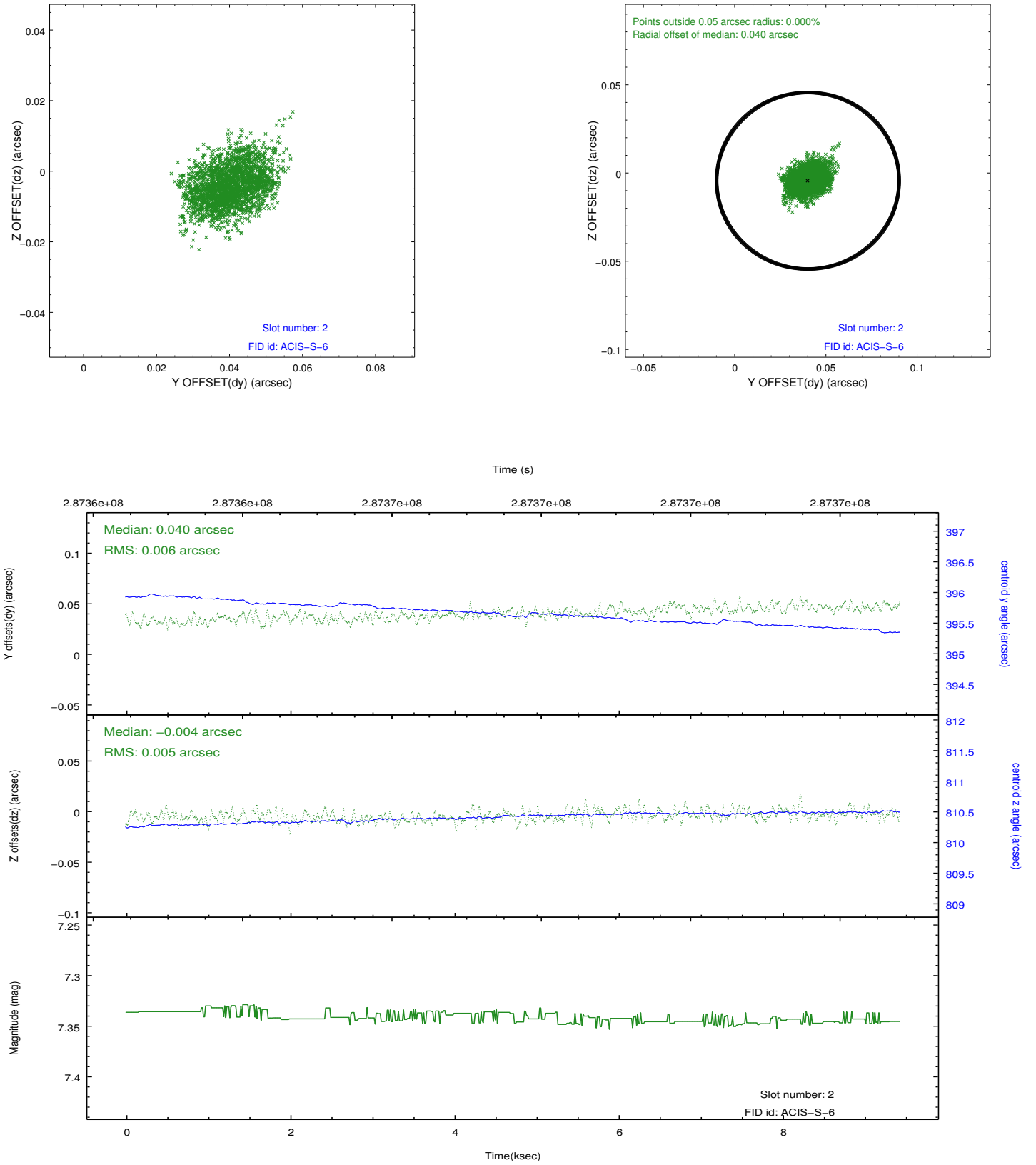
2.5.1 Slot 0



2.5.2 Slot 1



2.5.3 Slot 2



A Summary

A.1 Status

V&V Scientist	Beth Sundheim
V&V Date (YYYY-MM-DD)	2012.04.20
V&V Edition	1
V&V Disposition and Status	OK
V&V Charge Time	9.43039996

A.2 Comments