

V&V Reference Report

L2 ASCDS Version : 8.4.3

Observation 7142 - L2 Version 2
Chandra X-Ray Center

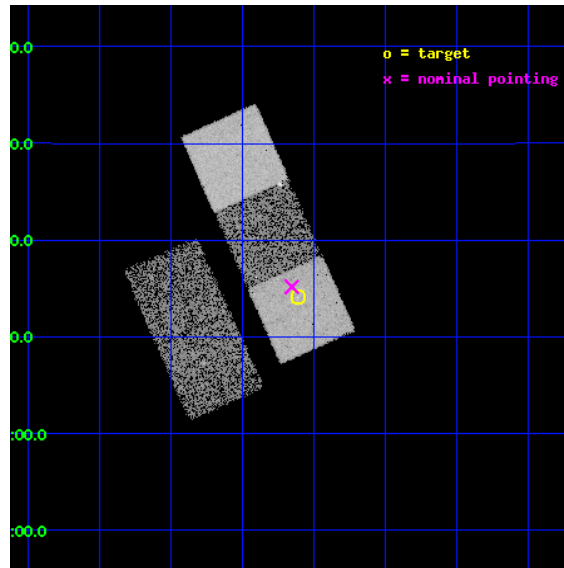
L2 Processing Date : Mar 24 2012

Contents

1	Front	2
2	OBI	3
2.1	OBI	3
2.1.1	Images	3
2.1.2	Bias	3
2.1.3	Parameters	4
2.1.4	Events	4
2.2	Compared Parameters	5
2.3	Aspect	6
2.4	Star Slots	9
2.4.1	Slot 3	9
2.4.2	Slot 4	10
2.4.3	Slot 5	11
2.4.4	Slot 6	12
2.4.5	Slot 7	13
2.5	FID Slots	14
2.5.1	Slot 0	14
2.5.2	Slot 1	15
2.5.3	Slot 2	16
A	Summary	17
A.1	Status	17
A.2	Comments	17

1 Front

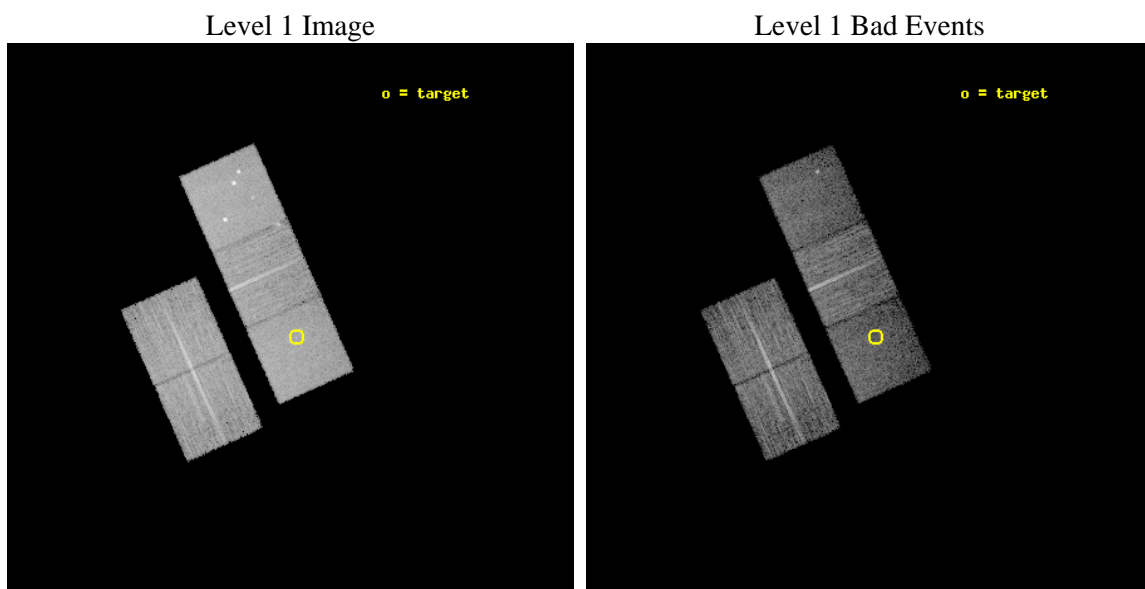
seq_num	600580	Sequence number
obs_id	7142	Observation id
title	The evolving ULX populations of early-type galaxies	Proposal title
observer	Dr Philip Humphrey	Principal investigator
object	NGC 3640	Source name
dtcycle	0	
cycle	P	events from which exps? Prim/Second/Both
ra_targ	170.278333	Observer's specified target RA [deg]
dec_targ	3.234722	Observer's specified target Dec [deg]
ra_nom	170.28831407193	Nominal RA [deg]
dec_nom	3.2529105904476	Nominal Dec [deg]
roll_nom	65.983464550509	Nominal Roll [deg]
revision	2	Processing version of data
ontime	9154.2999823689	Sum of GTIs [s]
livetime	9034.6923138017	Livetime [s]
ontime2	9154.2999823689	Sum of GTIs [s]
ontime3	9154.2999823689	Sum of GTIs [s]
ontime5	9154.2999823689	Sum of GTIs [s]
ontime6	9154.2999823689	Sum of GTIs [s]
ontime7	9154.2999823689	Sum of GTIs [s]
l2events	87630	Number of level 2 events



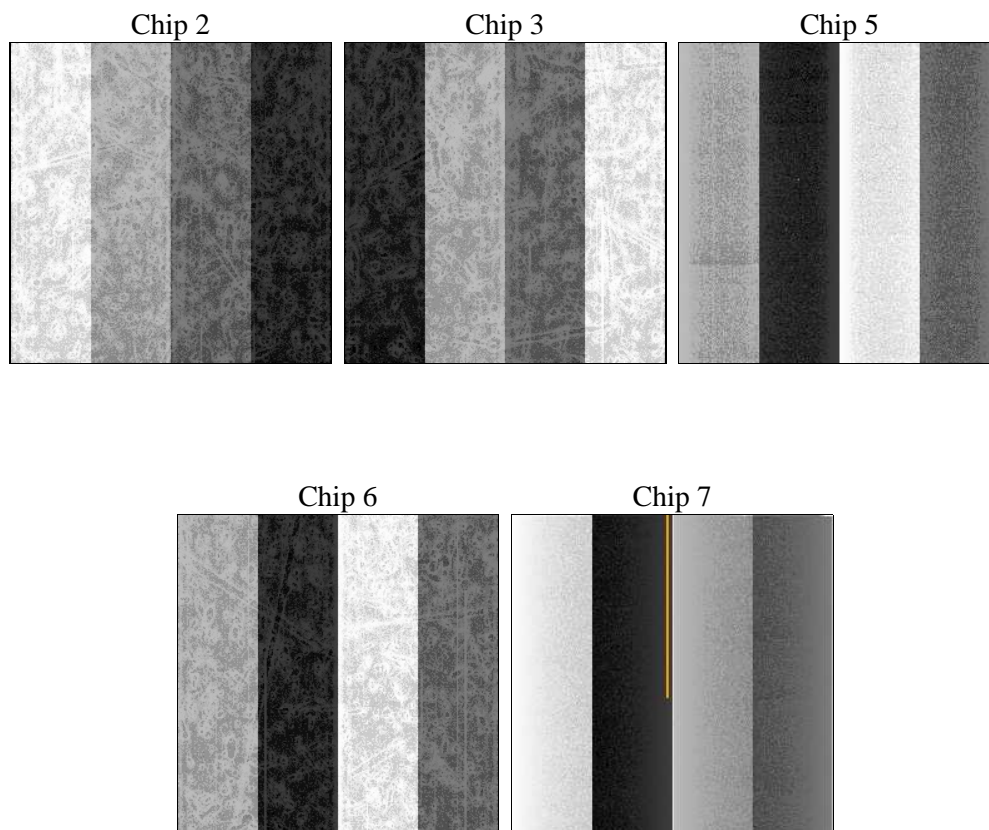
2 OBI

2.1 OBI

2.1.1 Images



2.1.2 Bias



2.1.3 Parameters

obi_num	0	Obi number	sched_exp_time	9000.000000	[s] Scheduled observation exposure time
ascdsver	8.4.3	Processing system revision	ontime	9154.2999823689	Sum of GTIs [s]
caldsver	4.4.8	 	ontime2	9154.2999823689	Sum of GTIs [s]
date	2012-03-24T06:19:33	Date and time of file creation	ontime3	9154.2999823689	Sum of GTIs [s]
revision	2	Processing version of data	ontime5	9154.2999823689	Sum of GTIs [s]
			ontime6	9154.2999823689	Sum of GTIs [s]
			ontime7	9154.2999823689	Sum of GTIs [s]
			l1events	367460	Number of level 1 events

2.1.4 Events

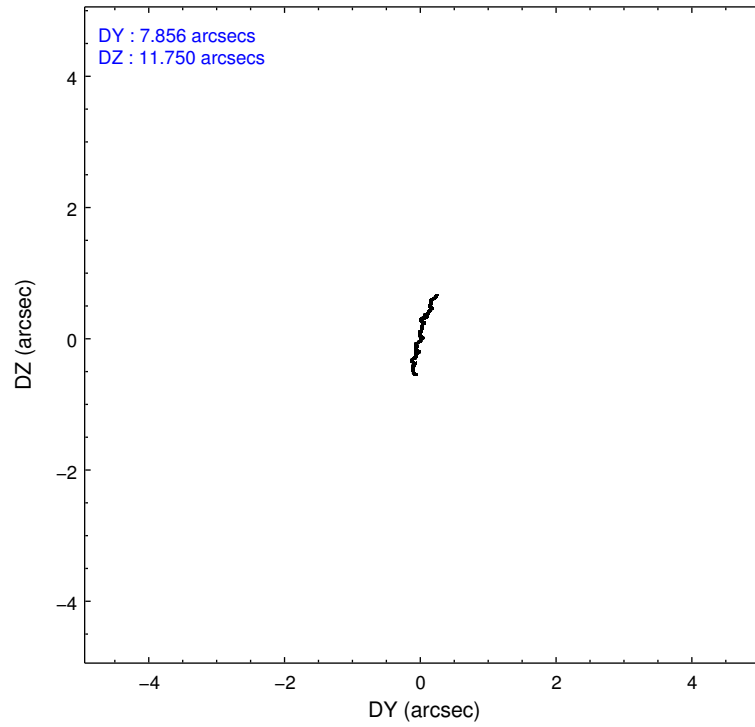
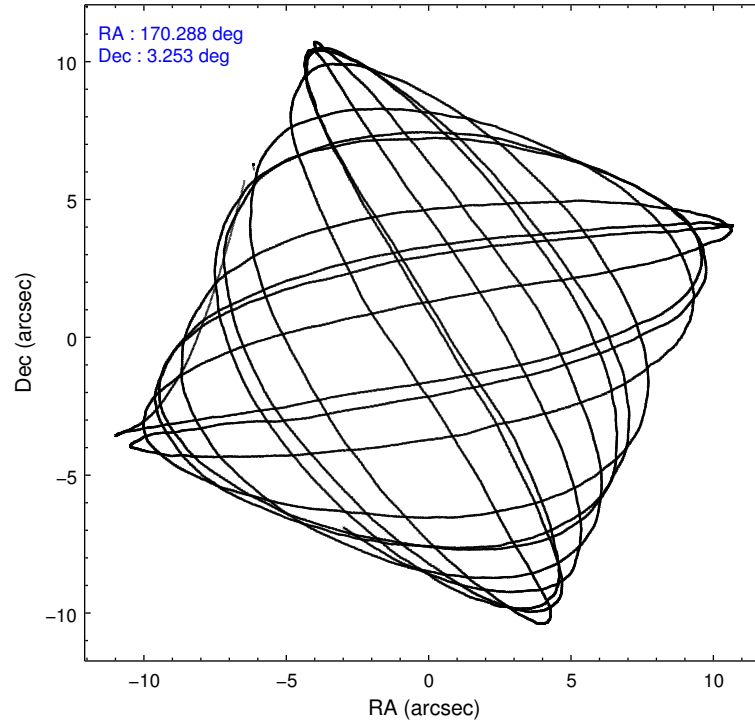
	ccd 2	ccd 3	ccd 5	ccd 6	ccd 7
level 1 events	69809	65400	91510	67611	73130
rejected events	63788	59600	45993	60817	40782
rejected %	91%	91%	50%	89%	55%

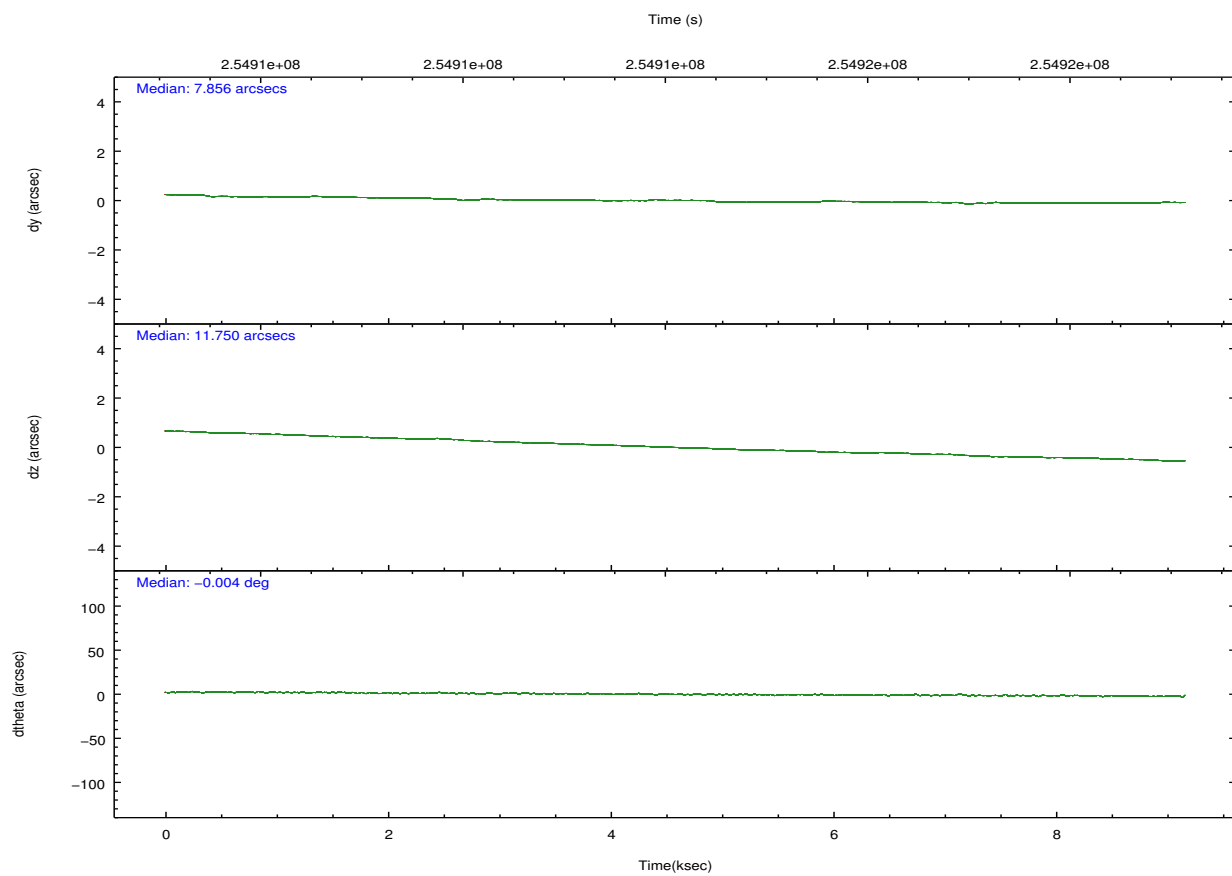
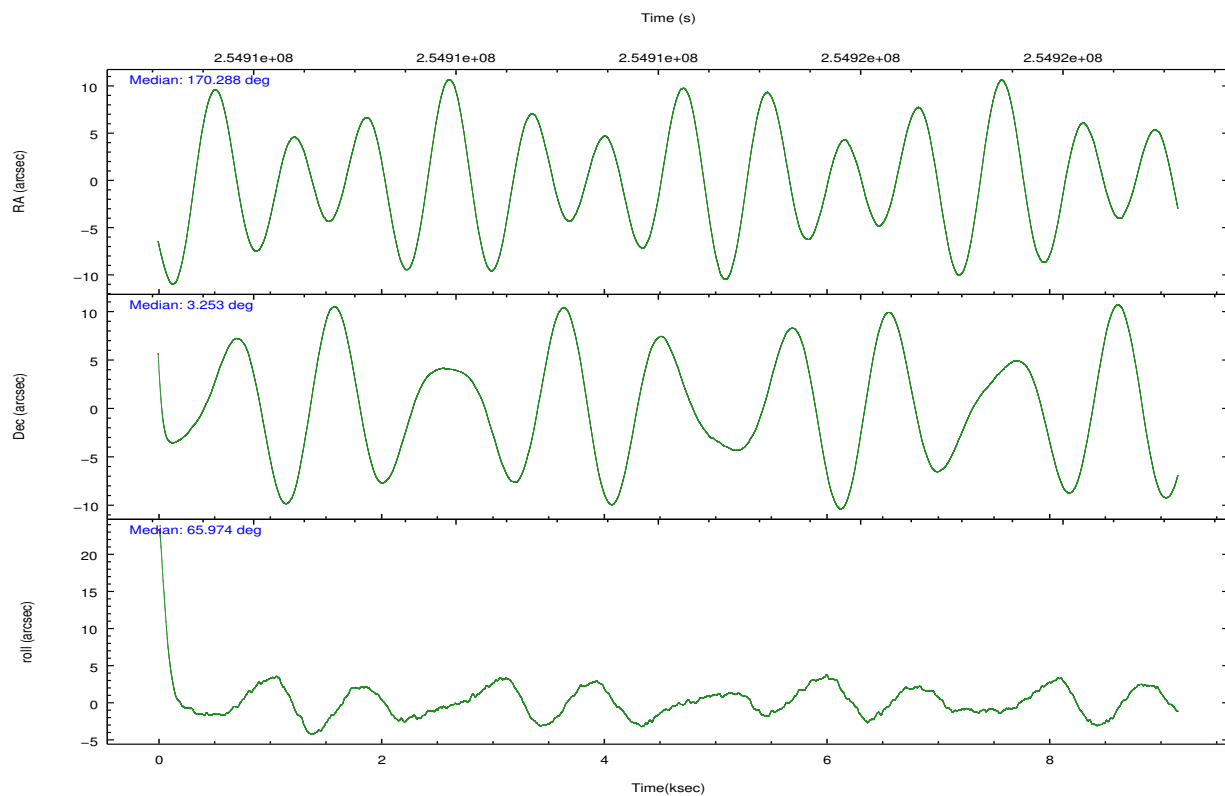
	ccd 2	ccd 3	ccd 5	ccd 6	ccd 7
grade 0 events	2306	2142	6791	2642	3098
	3%	3%	7%	3%	4%
grade 1 events	37	34	139	26	72
	0%	0%	0%	0%	0%
grade 2 events	1466	1270	13365	1475	6776
	2%	1%	14%	2%	9%
grade 3 events	692	689	2069	702	3135
	0%	1%	2%	1%	4%
grade 4 events	682	661	1937	724	3246
	0%	1%	2%	1%	4%
grade 5 events	2057	2511	7376	2660	7682
	2%	3%	8%	3%	10%
grade 6 events	1074	1227	22835	1443	17086
	1%	1%	24%	2%	23%
grade 7 events	61495	56866	36998	57939	32035
	88%	86%	40%	85%	43%

2.2 Compared Parameters

Parameter	Planned	Actual	Parameter	Planned	Actual
Instrument	ACIS	ACIS	Obspar format version number	7	7
Detector	ACIS-23567	ACIS-23567	Obspar file type	PREDICTED	ACTUAL
Grating	NONE	NONE	Obspar update status	NONE	UPDATED
Data mode	VFAINT	VFAINT	Number of optional ACIS chips dropped	0	0
Observation mode	POINTING	POINTING	On-chip summing requested	N	N
[deg] Pointing RA	170.291554	170.2883140719329	Subarray requested	NONE	NONE
[deg] Pointing Dec	3.225869	3.252910590447622	Alternating exposures requested	N	N
[deg] Pointing Roll	65.826622	65.98346455050866	[s] Primary exposure time	0.000000	3.1
[mm] SIM focus pos	-0.684267	-0.6828225247311905			
[mm] SIM defocus	0	0.001444936568705701			
[mm] SIM translation stage pos	-190.132523	-190.1425803651734			
[mm] SIM translation stage offset	0	0.01005778216563158			
[s] Observation start time (MET)	254909673.184000	254908549.5544			
Observation start date	2006-01-29T08:13:28	2006-01-29T07:55:49			
[s] Observation end time (MET)	254918673.184000	254919551.90491			
Observation end date	2006-01-29T10:43:28	2006-01-29T10:59:11			
Read mode	TIMED	TIMED			

2.3 Aspect



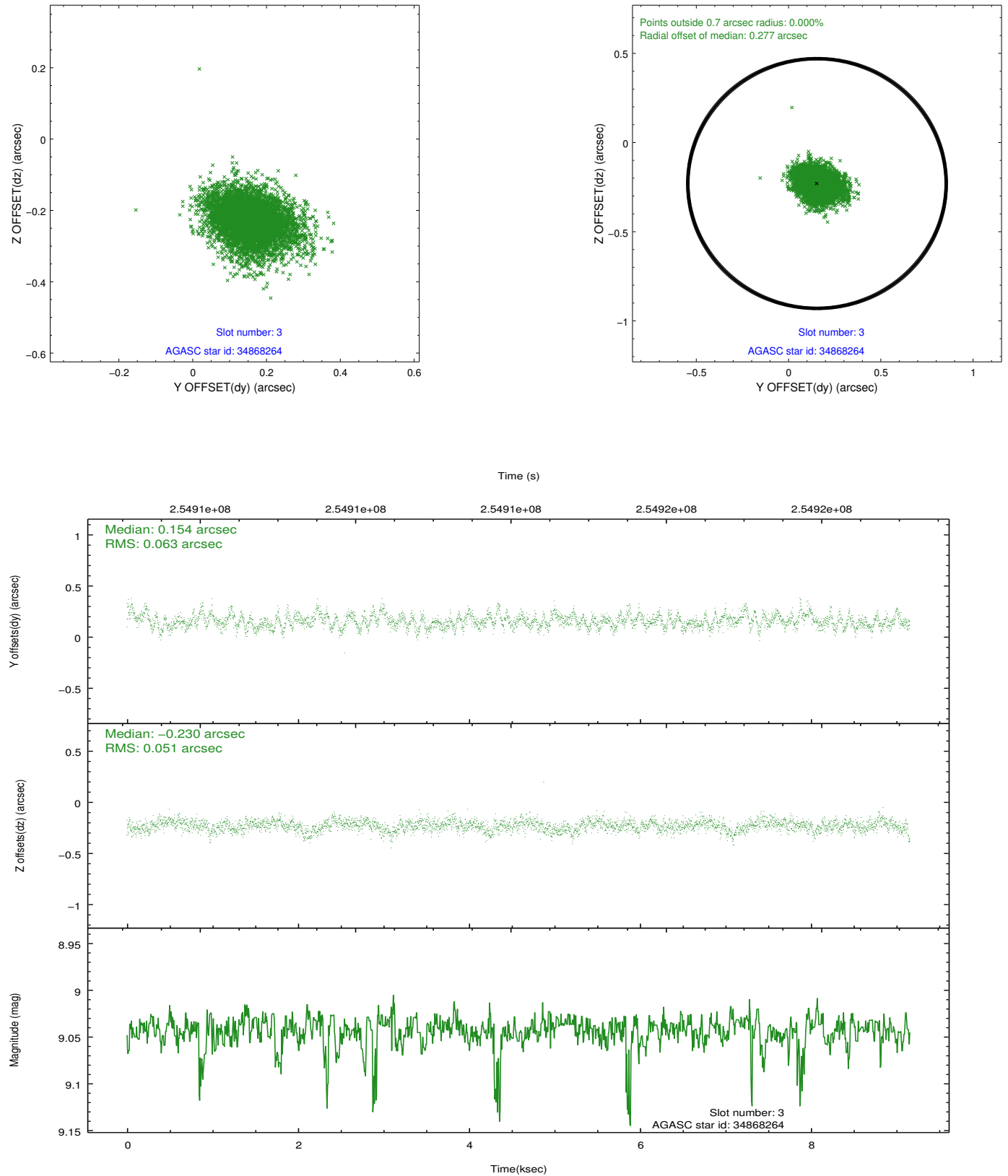


Slot Statistics

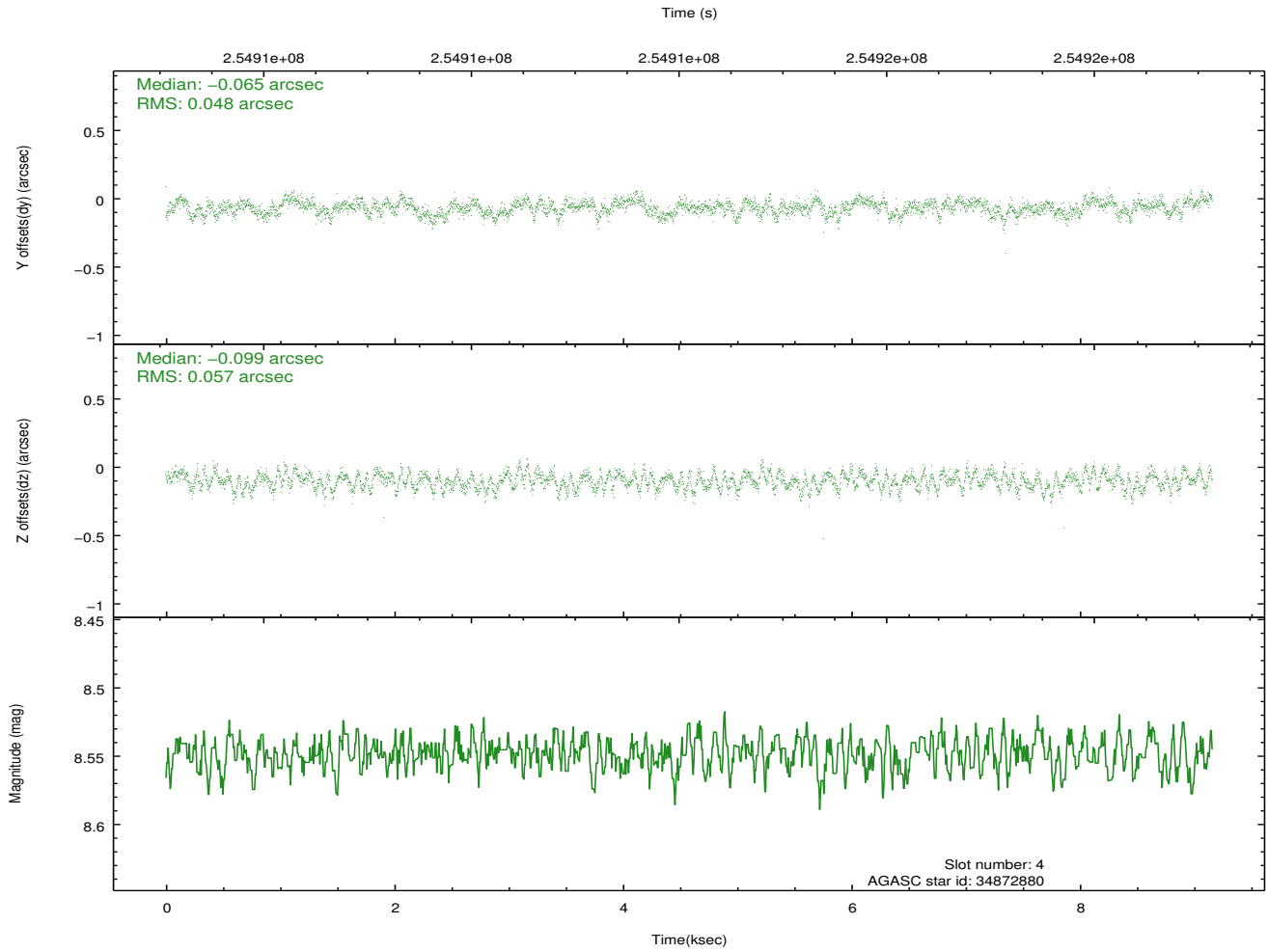
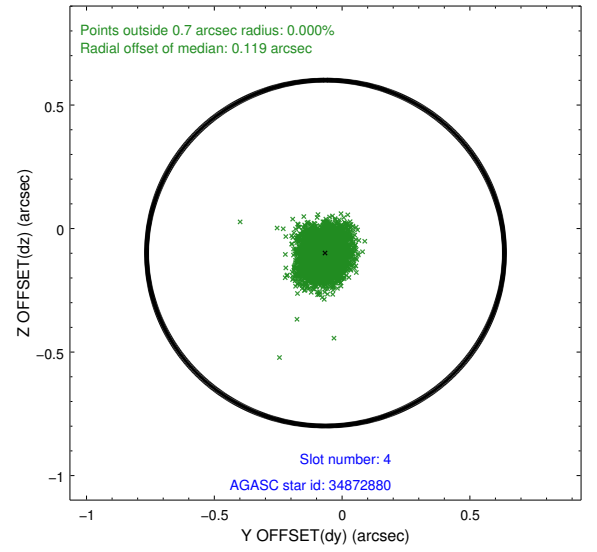
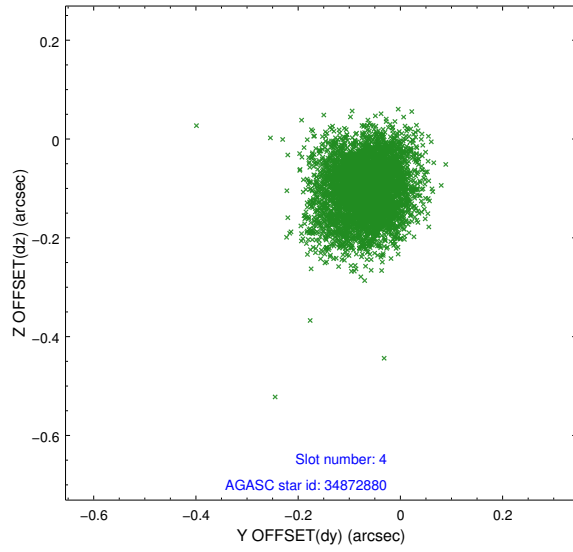
slot	status	id	mag	n_pts	med_dy	med_dz	dr1	dr2	ra	dec	mean_y	mean_z
0	FID	ACIS-S-2	7.11	2235	-0.026	-0.025	0.014	0.020	0.000000	0.000000	-760.65	-1733.05
1	FID	ACIS-S-4	7.20	2235	0.099	0.019	0.006	0.011	0.000000	0.000000	2152.47	174.88
2	FID	ACIS-S-5	7.23	2233	-0.103	0.014	0.015	0.027	0.000000	0.000000	-1812.82	169.20
3	GUIDE	34868264	9.04	4446	0.154	-0.230	0.084	0.141	169.656817	3.138749	-1219.67	1952.78
4	GUIDE	34872880	8.55	4467	-0.065	-0.099	0.078	0.125	169.935478	3.620996	773.65	1750.22
5	GUIDE	35000464	8.79	4465	-0.062	0.079	0.097	0.154	170.965623	3.618933	2283.30	-1628.44
6	GUIDE	35003976	9.50	4465	-0.106	0.221	0.103	0.167	170.805359	3.159228	538.70	-1782.93
7	GUIDE	35005688	8.00	4465	0.080	0.031	0.069	0.108	170.201331	2.862270	-1326.41	-240.57

2.4 Star Slots

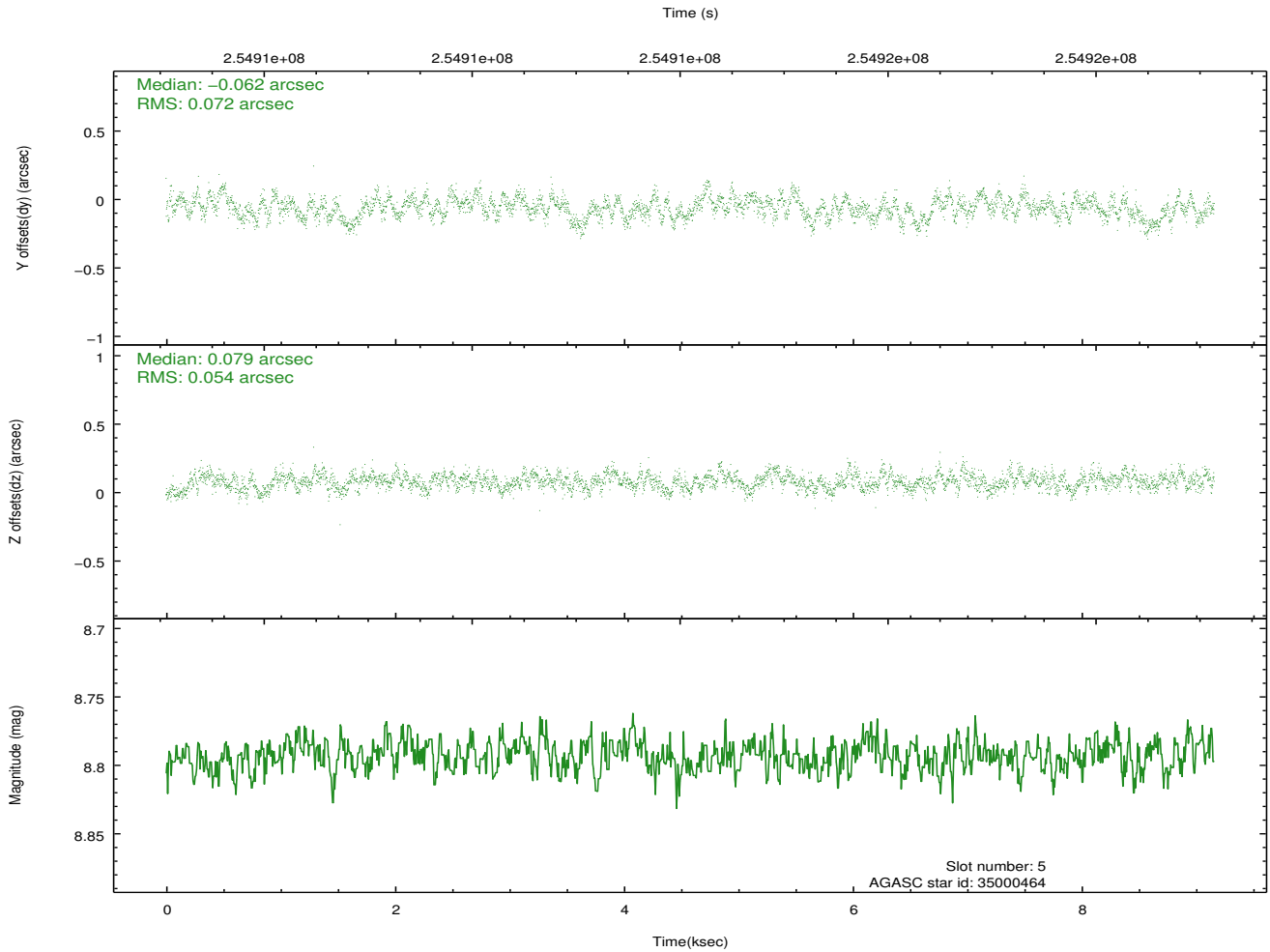
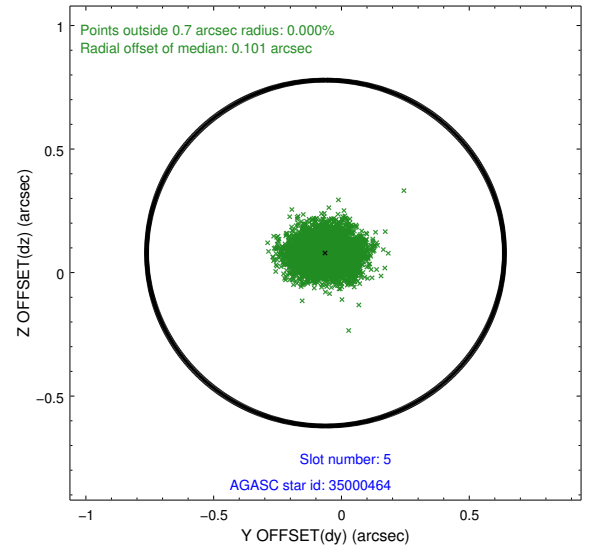
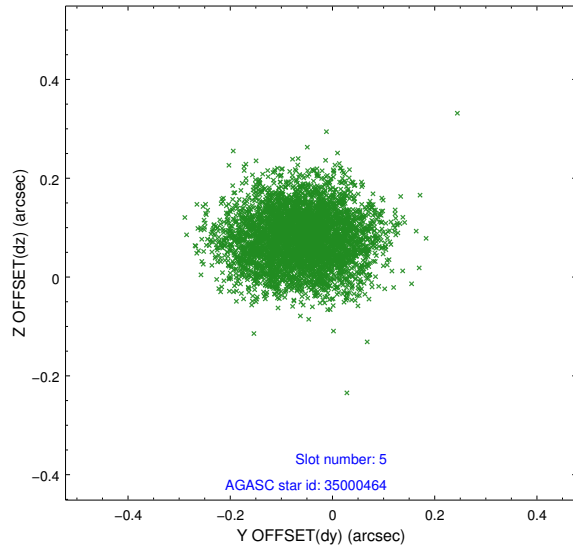
2.4.1 Slot 3



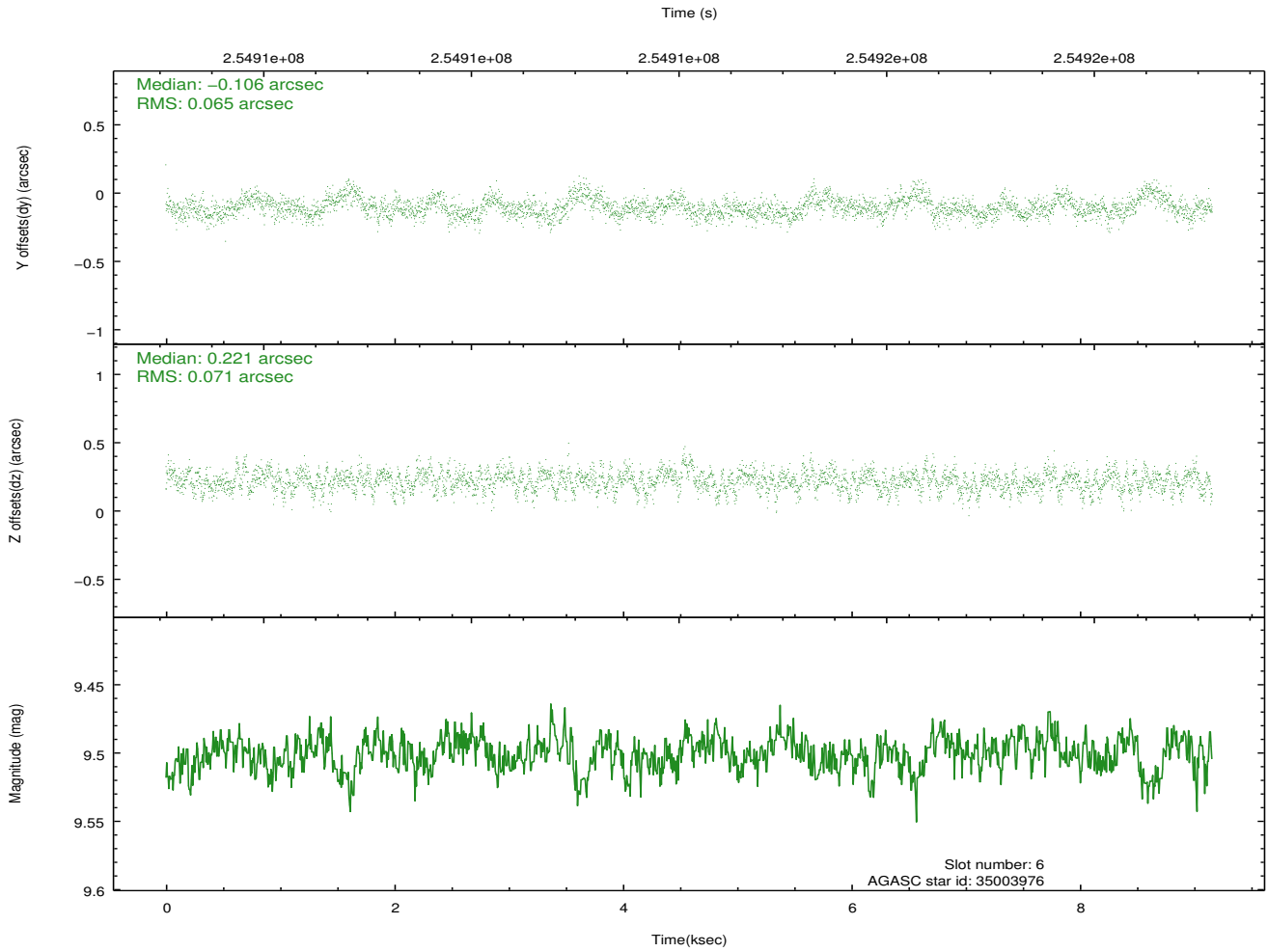
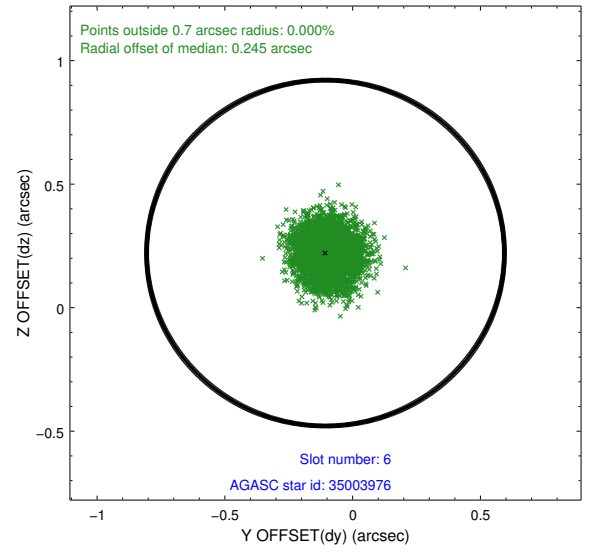
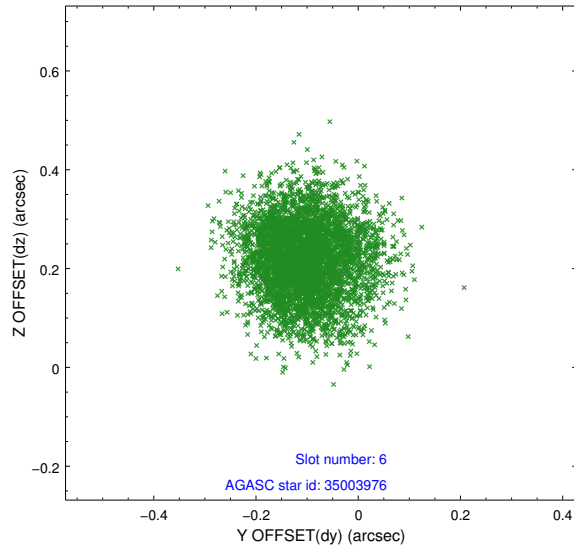
2.4.2 Slot 4



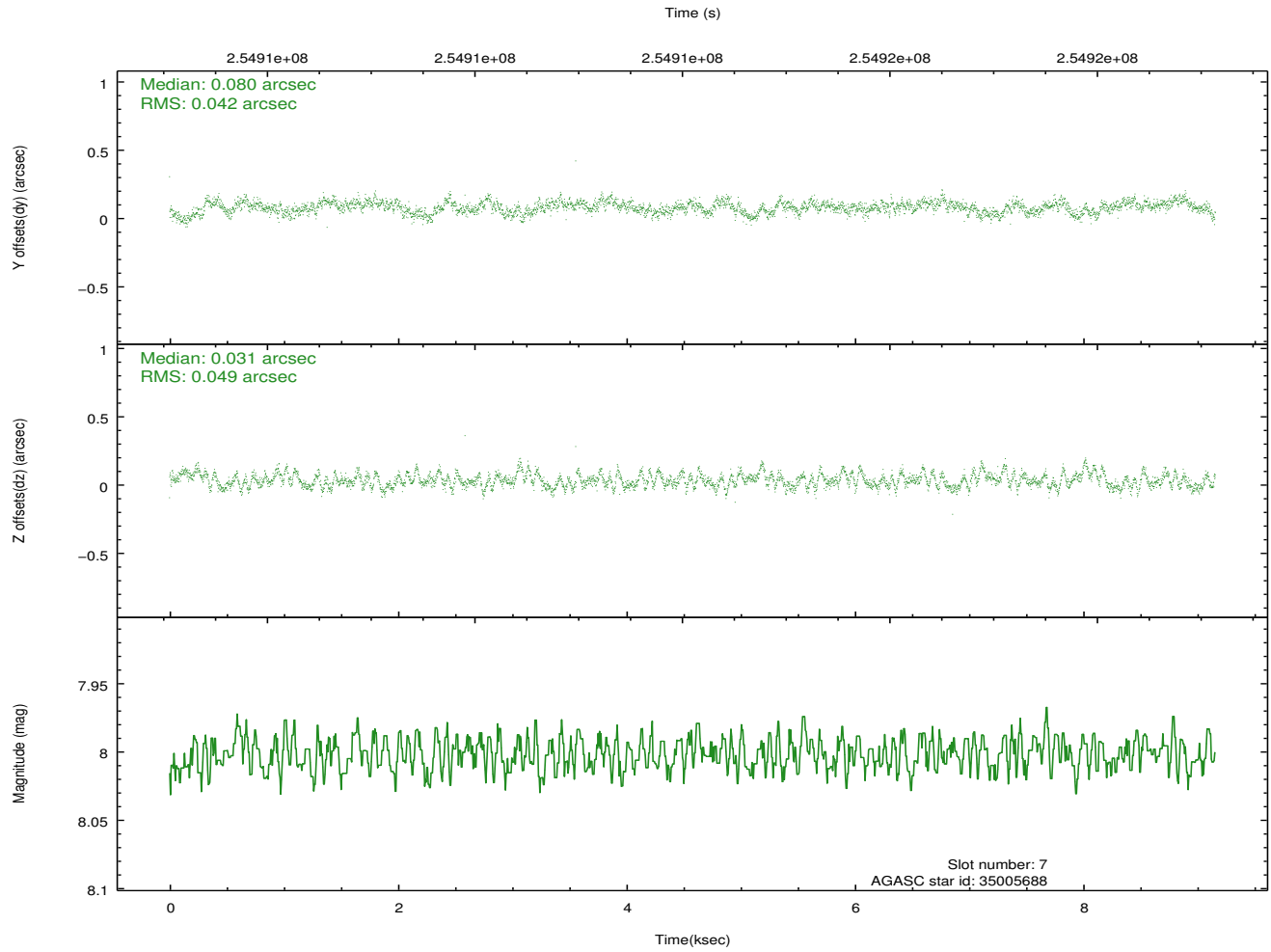
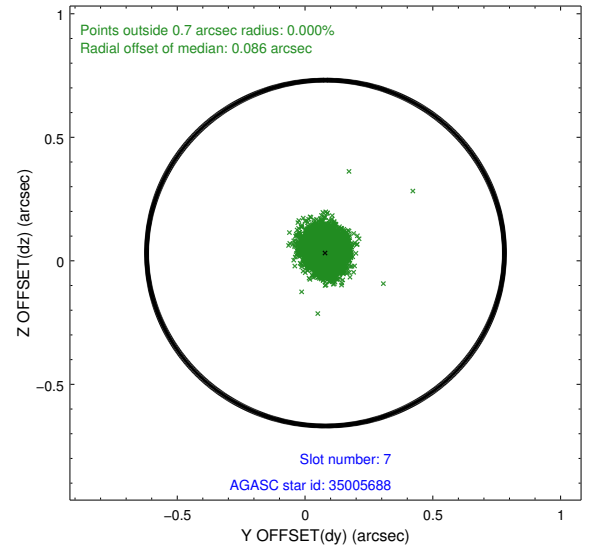
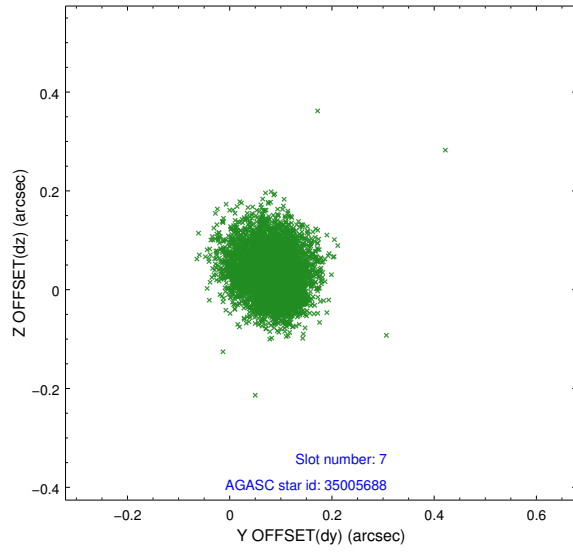
2.4.3 Slot 5



2.4.4 Slot 6

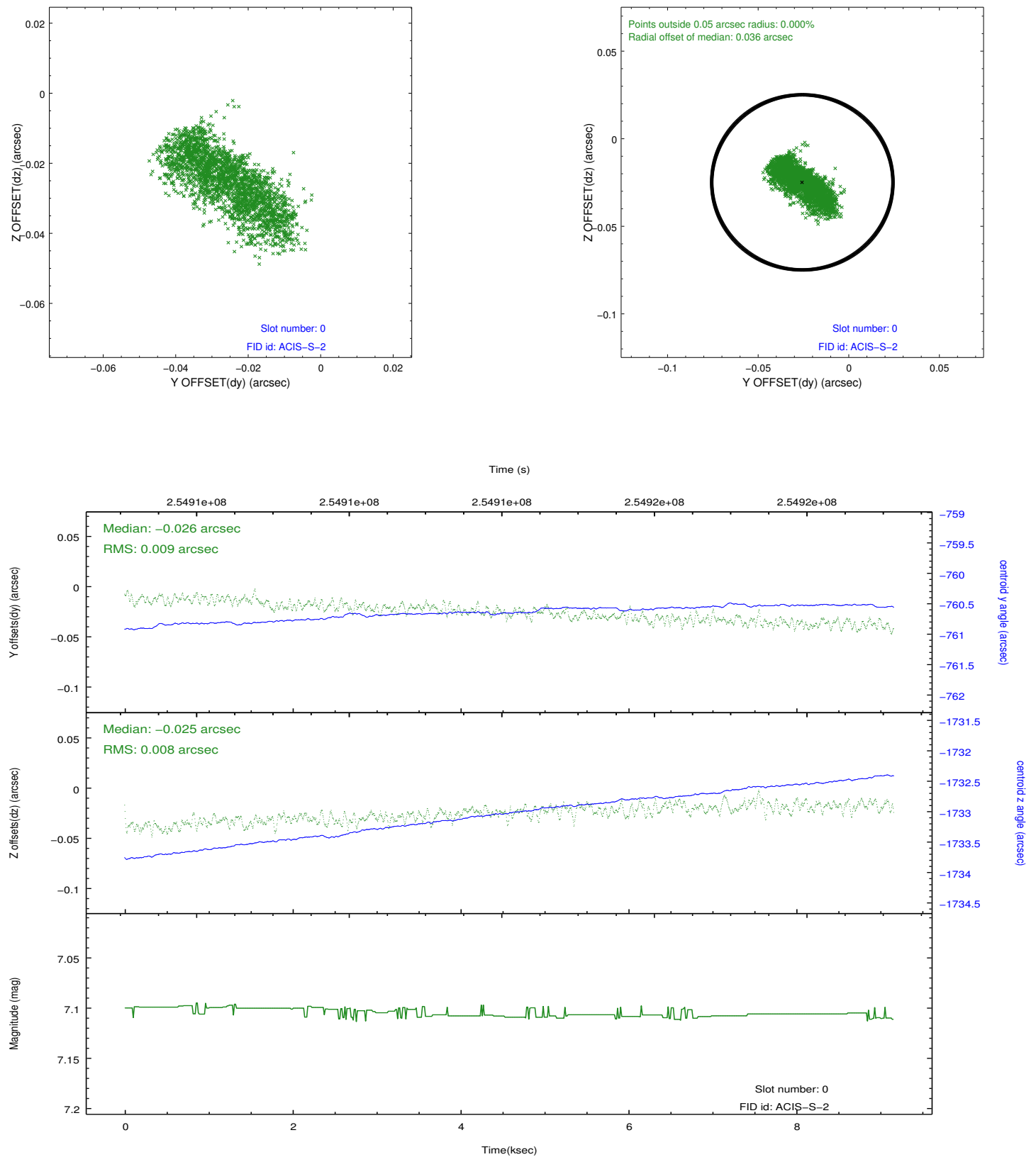


2.4.5 Slot 7

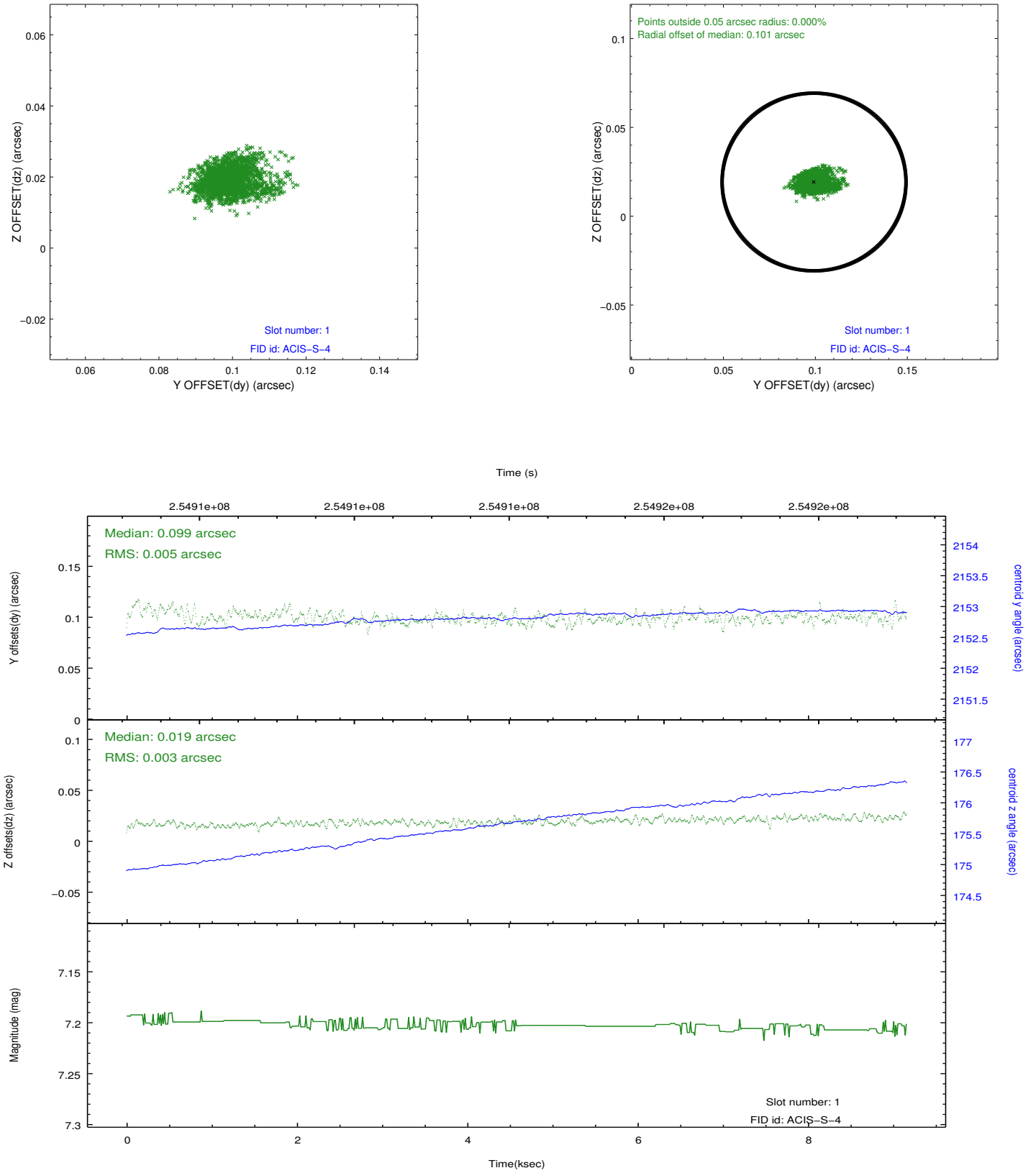


2.5 FID Slots

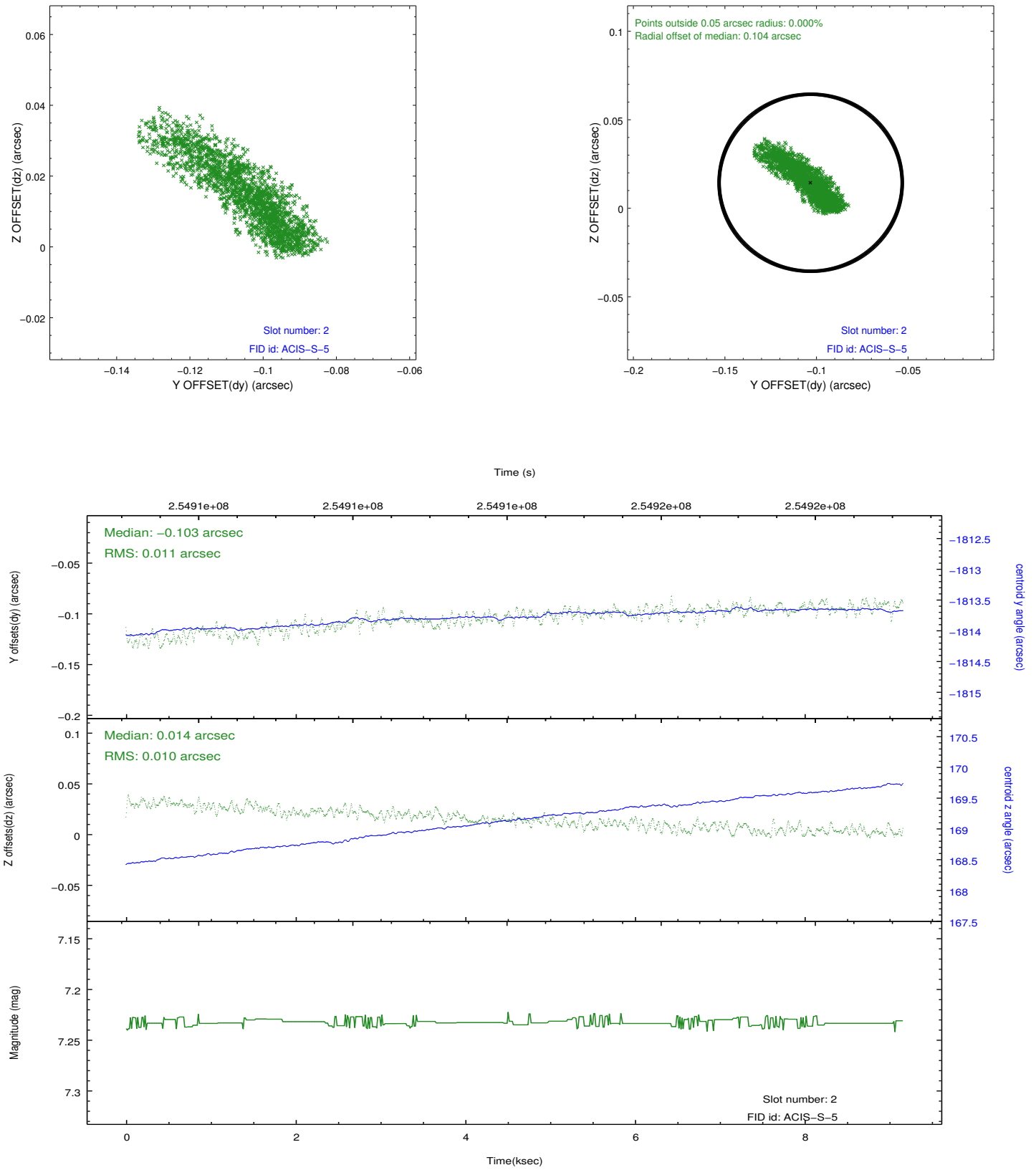
2.5.1 Slot 0



2.5.2 Slot 1



2.5.3 Slot 2



A Summary

A.1 Status

V&V Scientist	Jen Lauer
V&V Date (YYYY-MM-DD)	2012.03.26
V&V Edition	1
V&V Disposition and Status	OK
V&V Charge Time	9.15429998

A.2 Comments