

V&V Reference Report

L2 ASCDS Version : 8.4.3.1

Observation 7108 - L2 Version 2
Chandra X-Ray Center

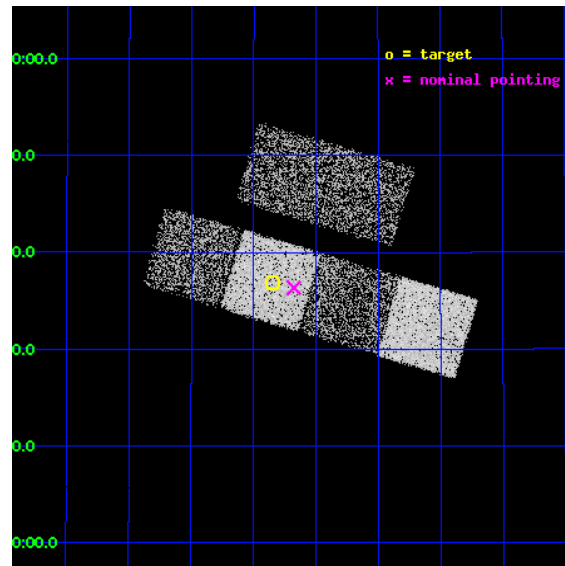
L2 Processing Date : Mar 29 2012

Contents

1	Front	2
2	OBI	3
2.1	OBI	3
2.1.1	Images	3
2.1.2	Bias	3
2.1.3	Parameters	4
2.1.4	Events	4
2.2	Compared Parameters	5
2.3	Aspect	6
2.4	Star Slots	9
2.4.1	Slot 3	9
2.4.2	Slot 4	10
2.4.3	Slot 5	11
2.4.4	Slot 6	12
2.4.5	Slot 7	13
2.5	FID Slots	14
2.5.1	Slot 0	14
2.5.2	Slot 1	15
2.5.3	Slot 2	16
A	Summary	17
A.1	Status	17
A.2	Comments	17

1 Front

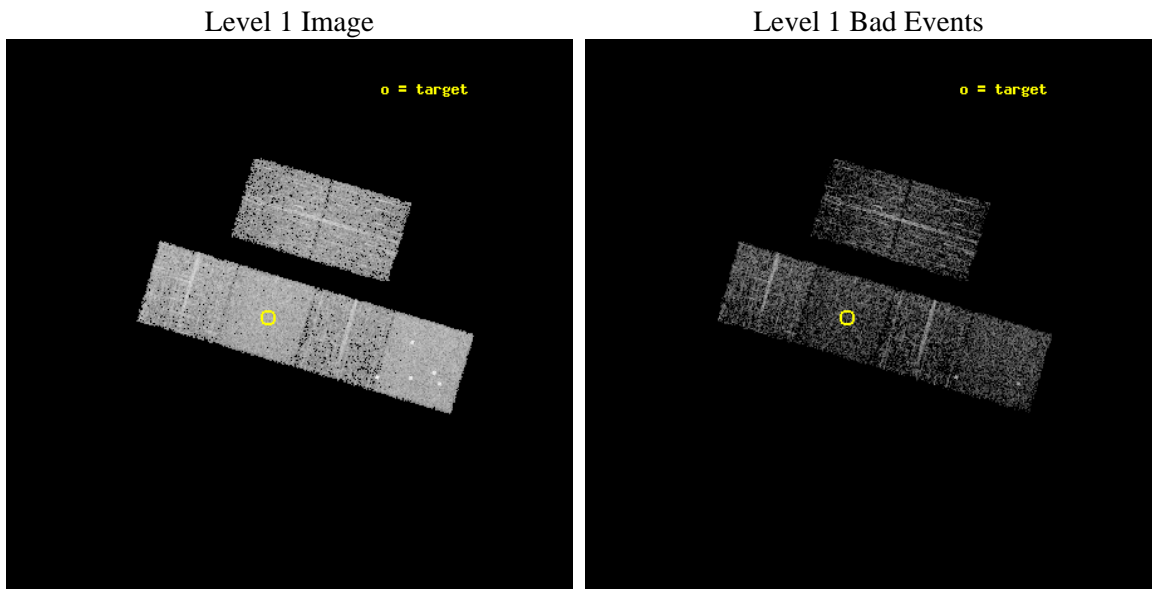
seq_num	600546	Sequence number
obs_id	7108	Observation id
title	A Complete Sample of ULX Host Galaxies	Proposal title
observer	Douglas Swartz	Principal investigator
object	NGC 4274	Source name
dtcycle	0	
cycle	P	events from which exps? Prim/Second/Both
ra_targ	184.960833	Observer's specified target RA [deg]
dec_targ	29.614389	Observer's specified target Dec [deg]
ra_nom	184.91924600565	Nominal RA [deg]
dec_nom	29.605740354028	Nominal Dec [deg]
roll_nom	196.38520613427	Nominal Roll [deg]
revision	2	Processing version of data
ontime	1929.3705554008	Sum of GTIs [s]
livetime	1904.9397037009	Livetime [s]
ontime2	1929.4115954041	Sum of GTIs [s]
ontime3	1926.006474942	Sum of GTIs [s]
ontime5	1929.3295153975	Sum of GTIs [s]
ontime6	1929.2884753942	Sum of GTIs [s]
ontime7	1929.3705554008	Sum of GTIs [s]
ontime8	1925.9653553963	Sum of GTIs [s]
l2events	32238	Number of level 2 events



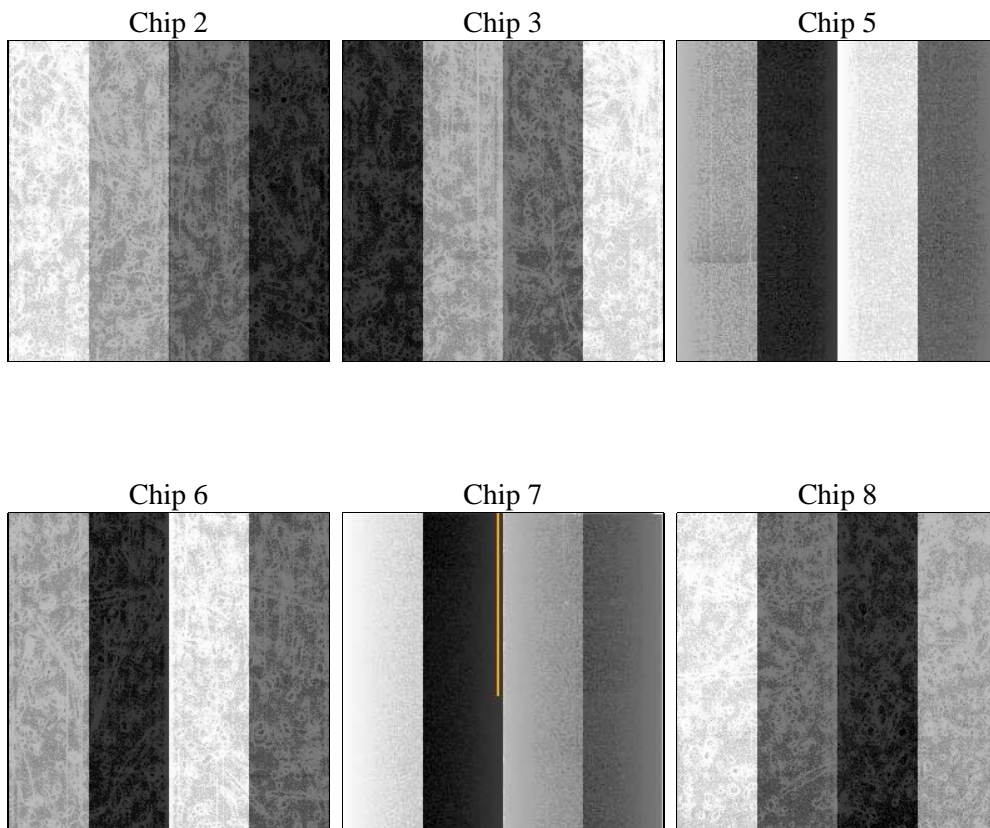
2 OBI

2.1 OBI

2.1.1 Images



2.1.2 Bias



2.1.3 Parameters

obi_num	0	Obi number	sched_exp_time	2174.843000	[s] Scheduled observation exposure time
ascdsver	8.4.3	Processing system revision	ontime	1929.3705554008	Sum of GTIs [s]
caldbver	4.4.8	 	ontime2	1929.4115954041	Sum of GTIs [s]
date	2012-03-29T12:24:32	Date and time of file creation	ontime3	1926.006474942	Sum of GTIs [s]
revision	2	Processing version of data	ontime5	1929.3295153975	Sum of GTIs [s]
			ontime6	1929.2884753942	Sum of GTIs [s]
			ontime7	1929.3705554008	Sum of GTIs [s]
			ontime8	1925.9653553963	Sum of GTIs [s]
			l1events	130481	Number of level 1 events

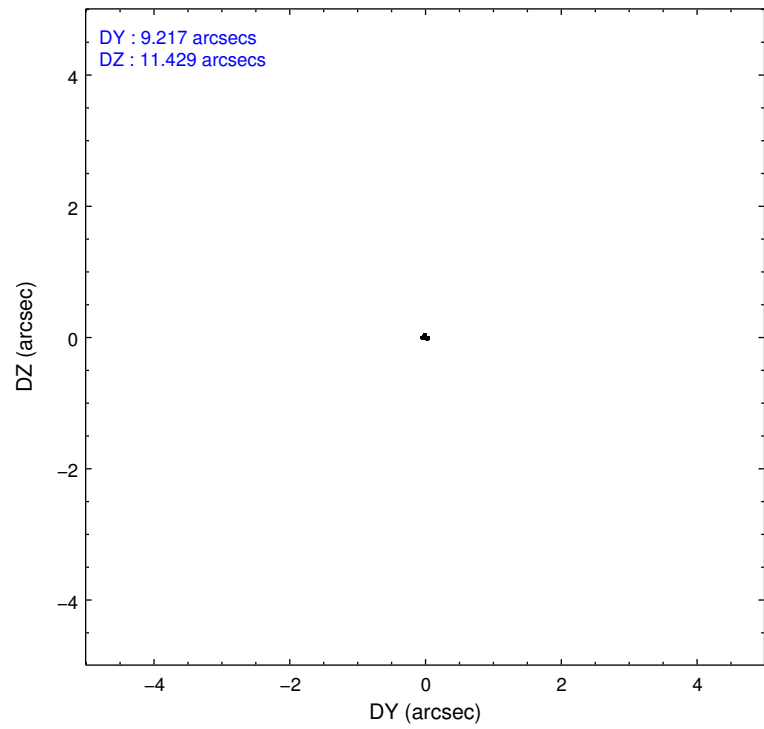
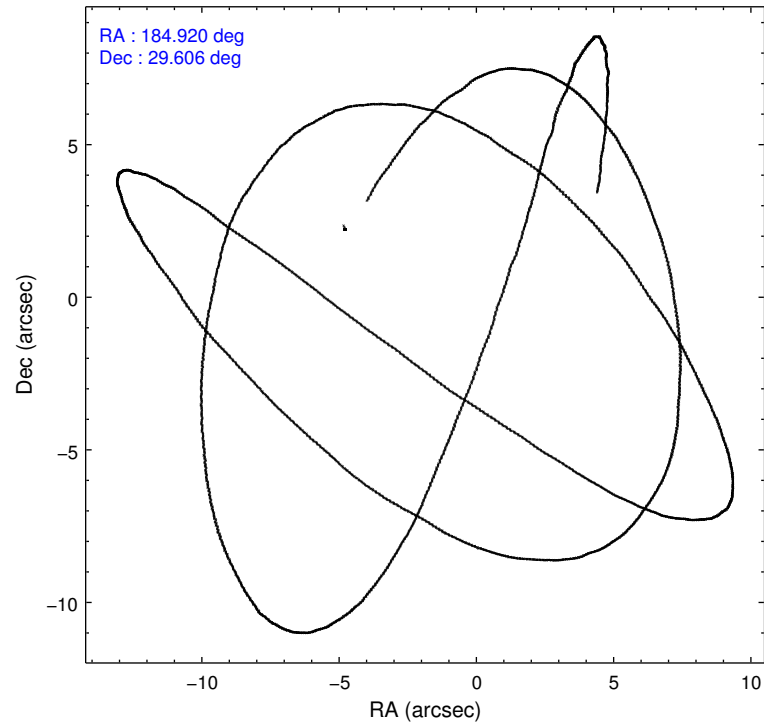
2.1.4 Events

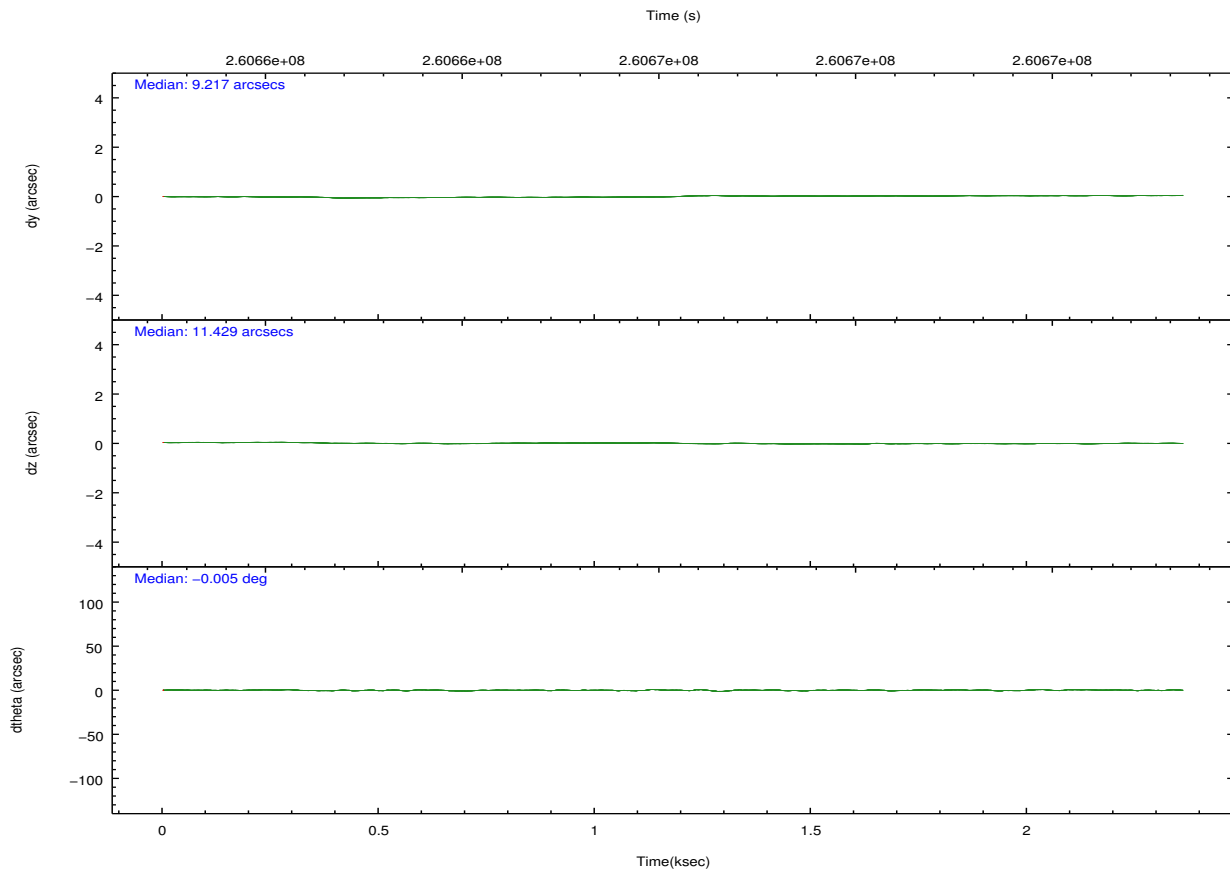
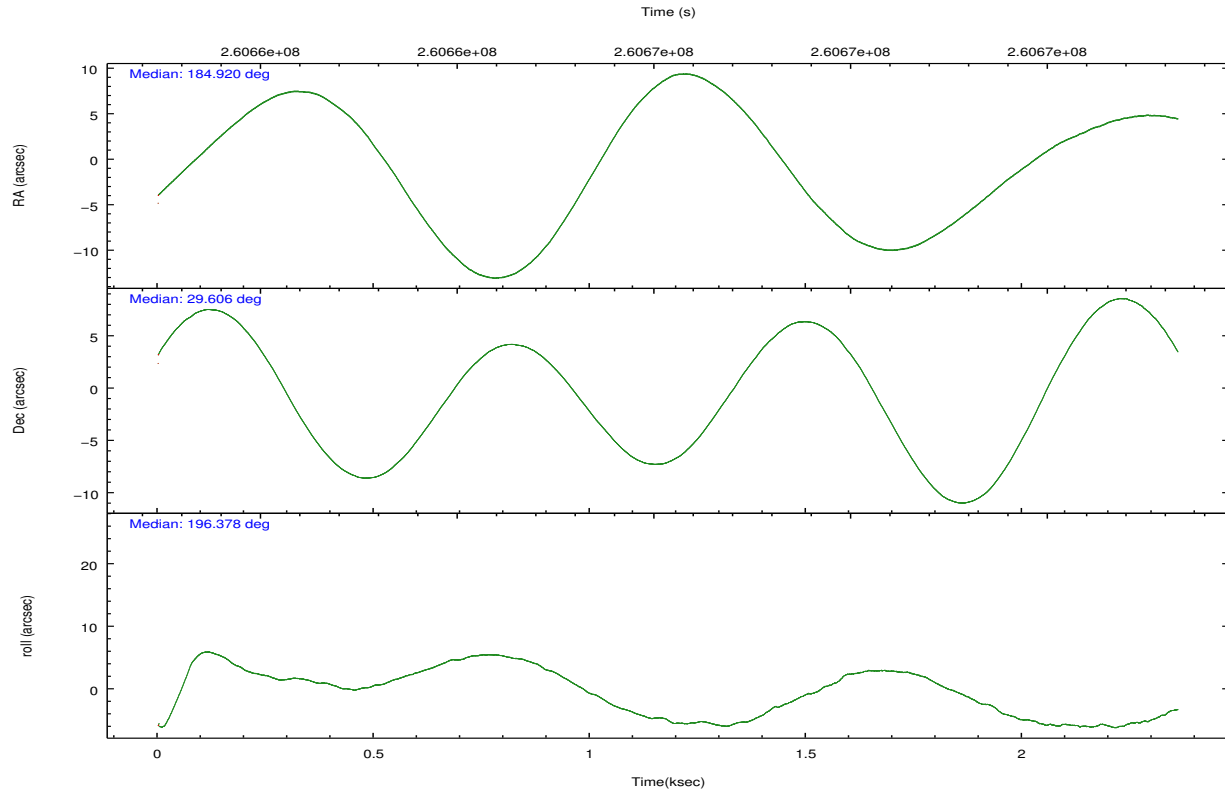
	ccd 2	ccd 3	ccd 5	ccd 6	ccd 7	ccd 8		ccd 2	ccd 3	ccd 5	ccd 6	ccd 7	ccd 8
level 1 events	18039	17076	28186	17484	24530	25166	grade 0 events	1408	1335	2148	1336	965	2040
rejected events	15337	14539	14290	14710	13563	19885		7%	7%	7%	7%	3%	8%
rejected %	85%	85%	50%	84%	55%	79%	grade 1 events	11	14	80	19	33	30
								0%	0%	0%	0%	0%	0%
							grade 2 events	482	435	3903	531	2155	1057
								2%	2%	13%	3%	8%	4%
							grade 3 events	210	203	502	226	1009	521
								1%	1%	1%	1%	4%	2%
							grade 4 events	223	195	462	234	923	507
								1%	1%	1%	1%	3%	2%
							grade 5 events	627	779	1987	761	2242	1005
								3%	4%	7%	4%	9%	3%
							grade 6 events	392	375	6932	454	5955	1166
								2%	2%	24%	2%	24%	4%
							grade 7 events	14686	13740	12172	13923	11248	18840
								81%	80%	43%	79%	45%	74%

2.2 Compared Parameters

Parameter	Planned	Actual	Parameter	Planned	Actual
Instrument	ACIS	ACIS	Obspar format version number	7	7
Detector	ACIS-235678	ACIS-235678	Obspar file type	PREDICTED	ACTUAL
Grating	NONE	NONE	Obspar update status	NONE	UPDATED
Data mode	FAINT	FAINT	Number of optional ACIS chips dropped	0	0
Observation mode	POINTING	POINTING	On-chip summing requested	N	N
[deg] Pointing RA	184.940338	184.9192460056467	Subarray requested	NONE	NONE
[deg] Pointing Dec	29.625528	29.60574035402782	Alternating exposures requested	N	N
[deg] Pointing Roll	196.218187	196.3852061342687	[s] Primary exposure time	0.000000	3.2
[mm] SIM focus pos	-0.684267	-0.6828225247311905			
[mm] SIM defocus	0	0.001444936568705701			
[mm] SIM translation stage pos	-190.132523	-190.1400660498719			
[mm] SIM translation stage offset	0	0.00754346686406393			
[s] Observation start time (MET)	260664540.184000	260664163.64695			
Observation start date	2006-04-05T22:47:55	2006-04-05T22:42:43			
[s] Observation end time (MET)	260666715.184000	260666935.24708			
Observation end date	2006-04-05T23:24:10	2006-04-05T23:28:55			
Read mode	TIMED	TIMED			

2.3 Aspect



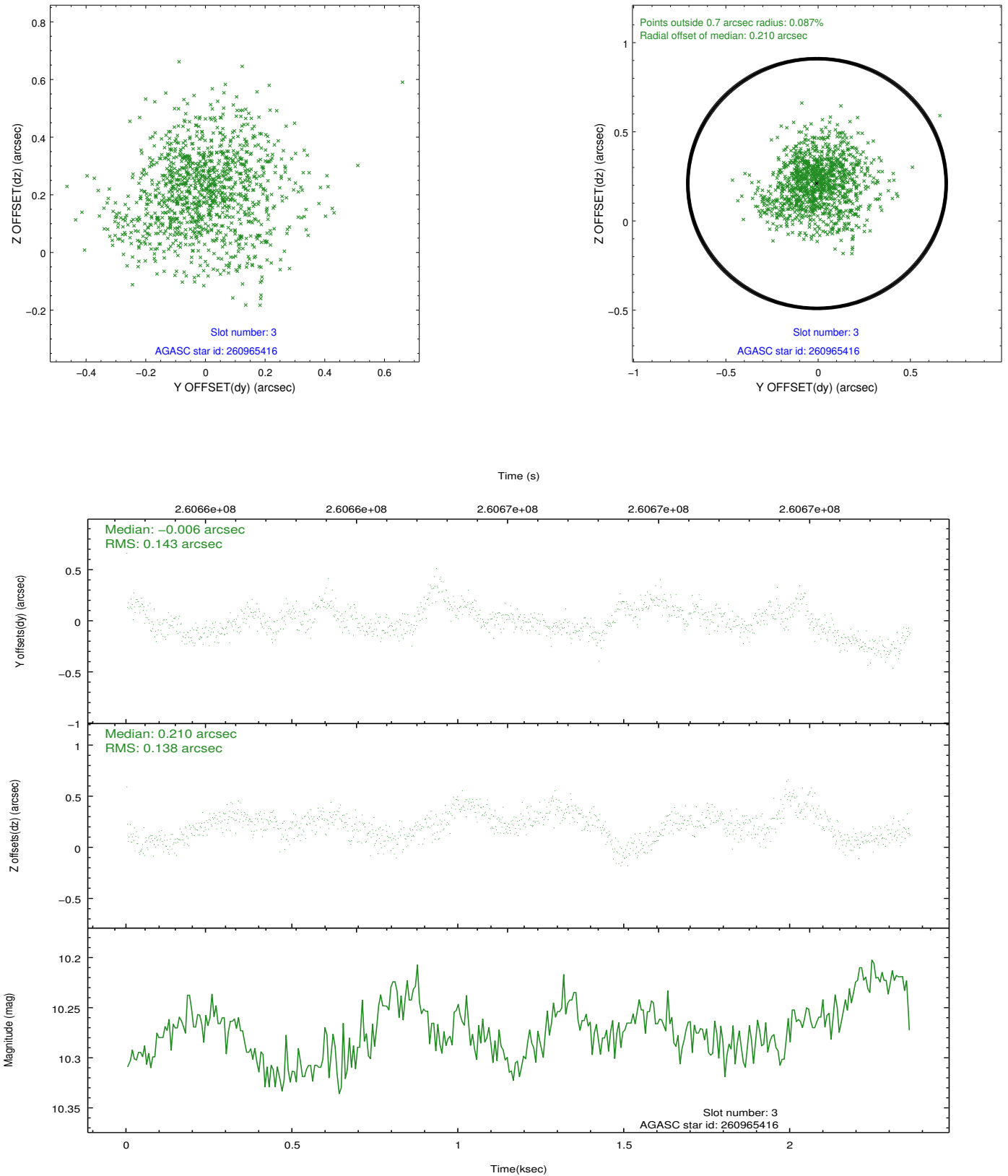


Slot Statistics

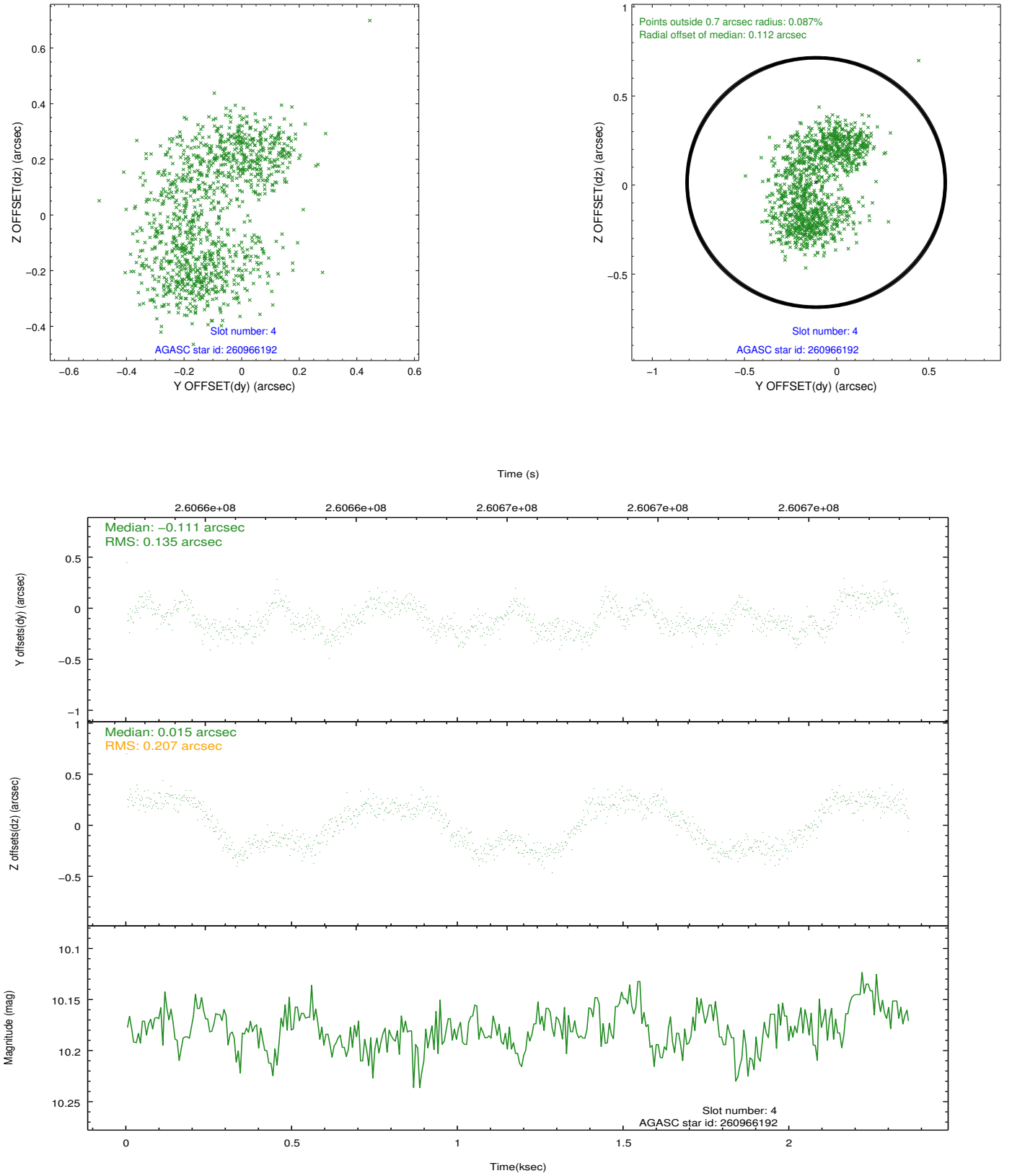
slot	status	id	mag	n_pts	med_dy	med_dz	dr1	dr2	ra	dec	mean_y	mean_z
0	FID	ACIS-S-2	7.10	576	-0.033	-0.020	0.007	0.012	0.000000	0.000000	-762.05	-1732.74
1	FID	ACIS-S-4	7.20	576	0.150	0.021	0.006	0.010	0.000000	0.000000	2150.14	172.96
2	FID	ACIS-S-5	7.23	576	-0.148	0.008	0.007	0.011	0.000000	0.000000	-1811.49	169.71
3	GUIDE	260965416	10.27	1147	-0.006	0.210	0.212	0.347	184.798422	29.200373	857.00	1345.38
4	GUIDE	260966192	10.18	1151	-0.111	0.015	0.275	0.371	184.520973	29.027073	1870.57	1699.58
5	GUIDE	331350544	8.71	1152	0.240	-0.159	0.131	0.212	184.879941	30.167953	-361.53	-1925.94
6	GUIDE	331368240	6.52	1152	-0.238	0.042	0.096	0.155	184.631757	30.249046	294.98	-2424.97
7	GUIDE	260979504	6.11	1151	0.090	-0.071	0.101	0.166	184.377399	28.937186	2395.53	1878.26

2.4 Star Slots

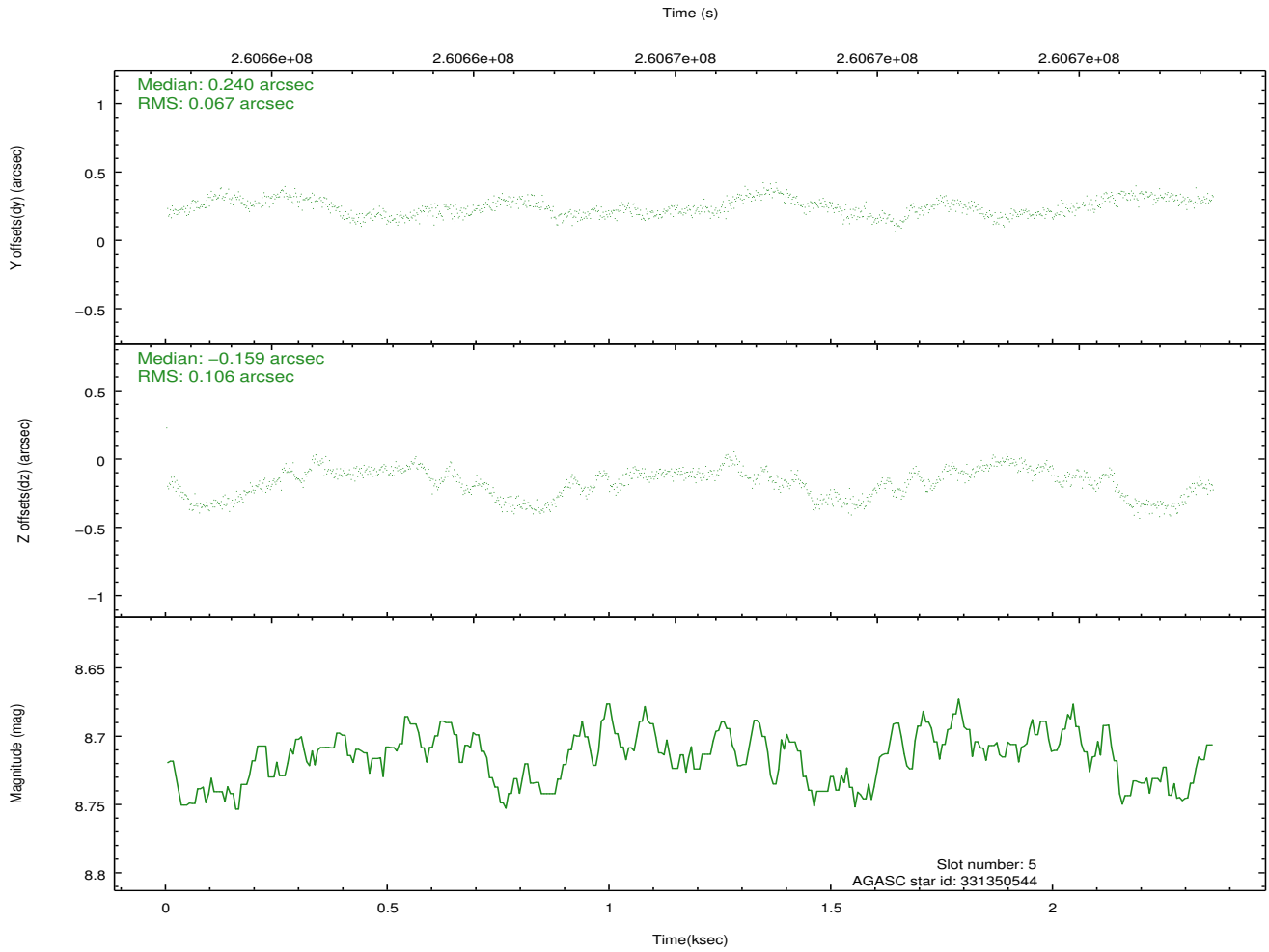
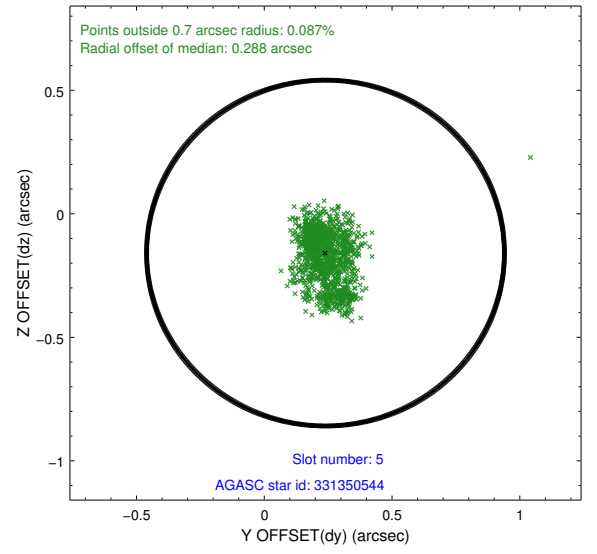
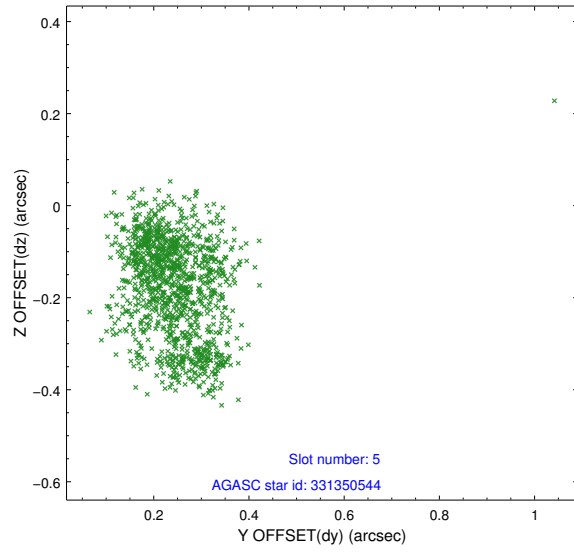
2.4.1 Slot 3



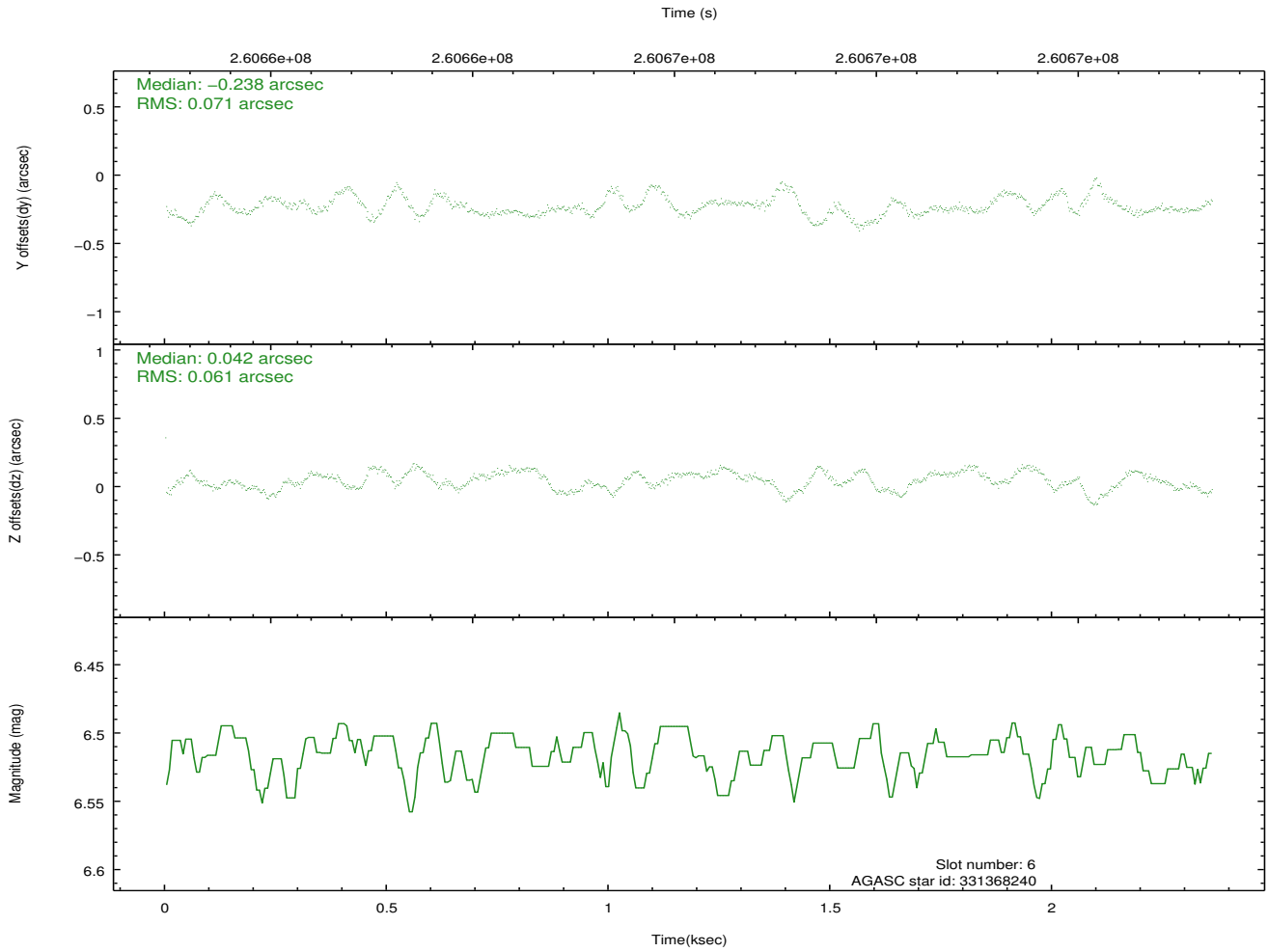
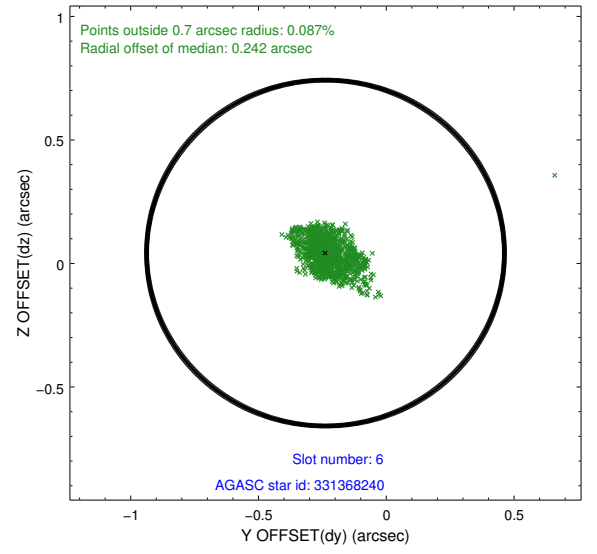
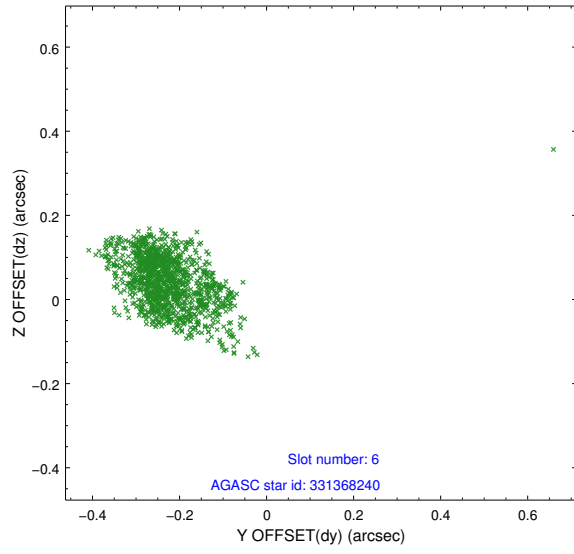
2.4.2 Slot 4



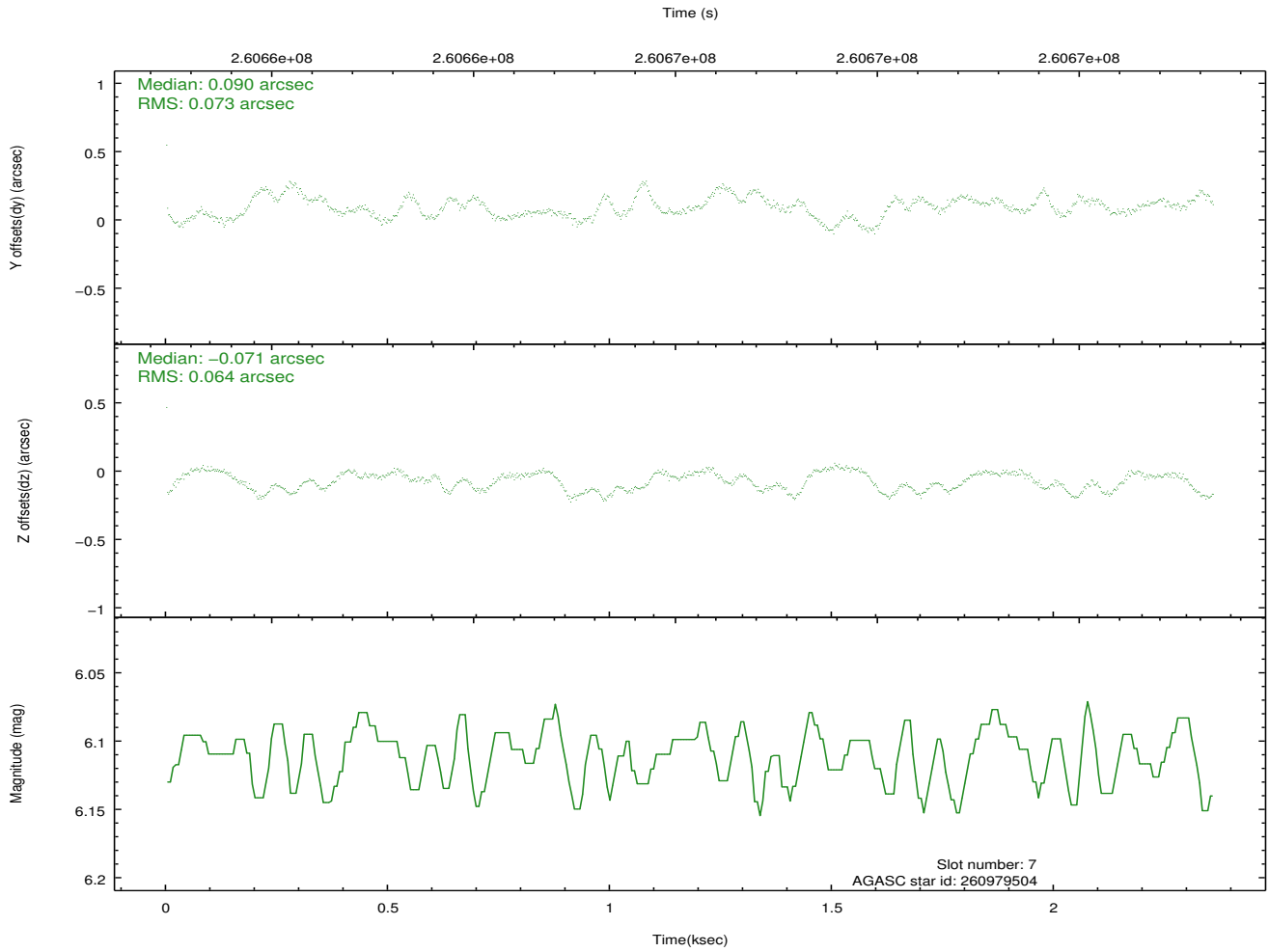
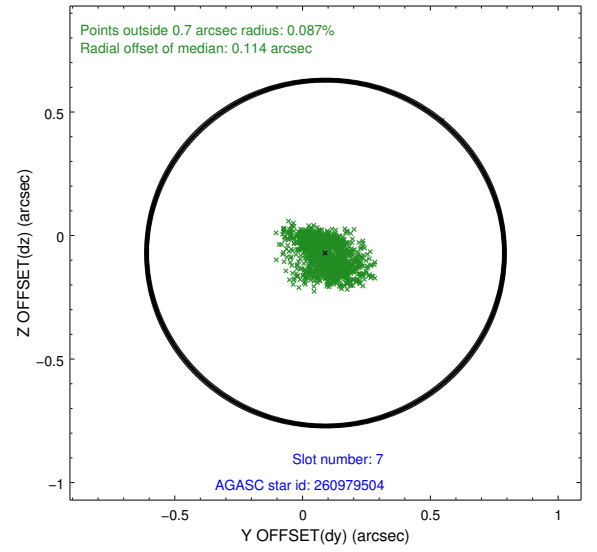
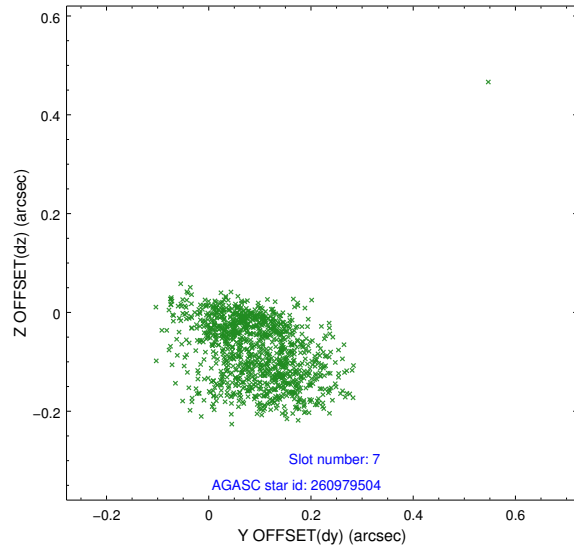
2.4.3 Slot 5



2.4.4 Slot 6

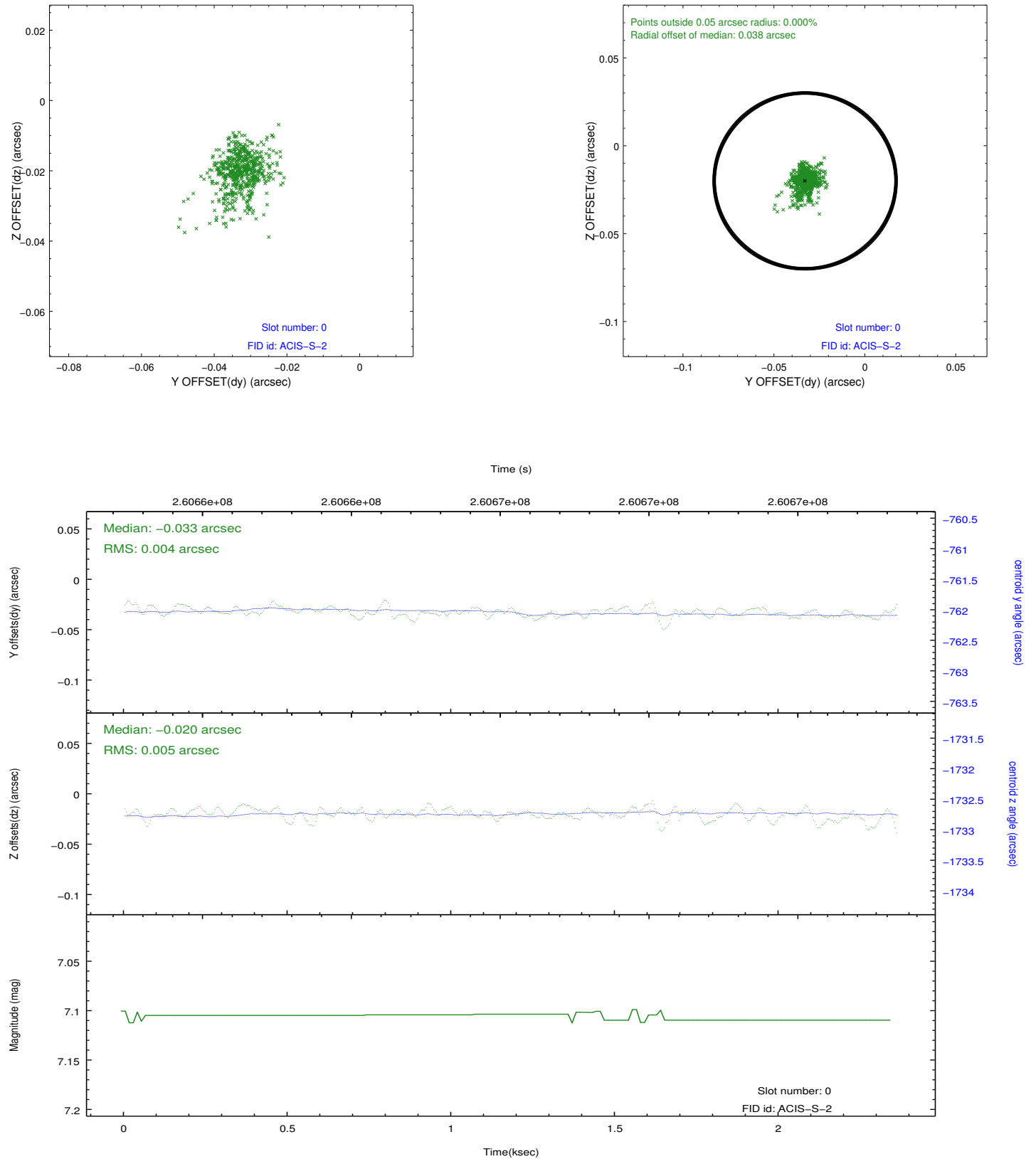


2.4.5 Slot 7

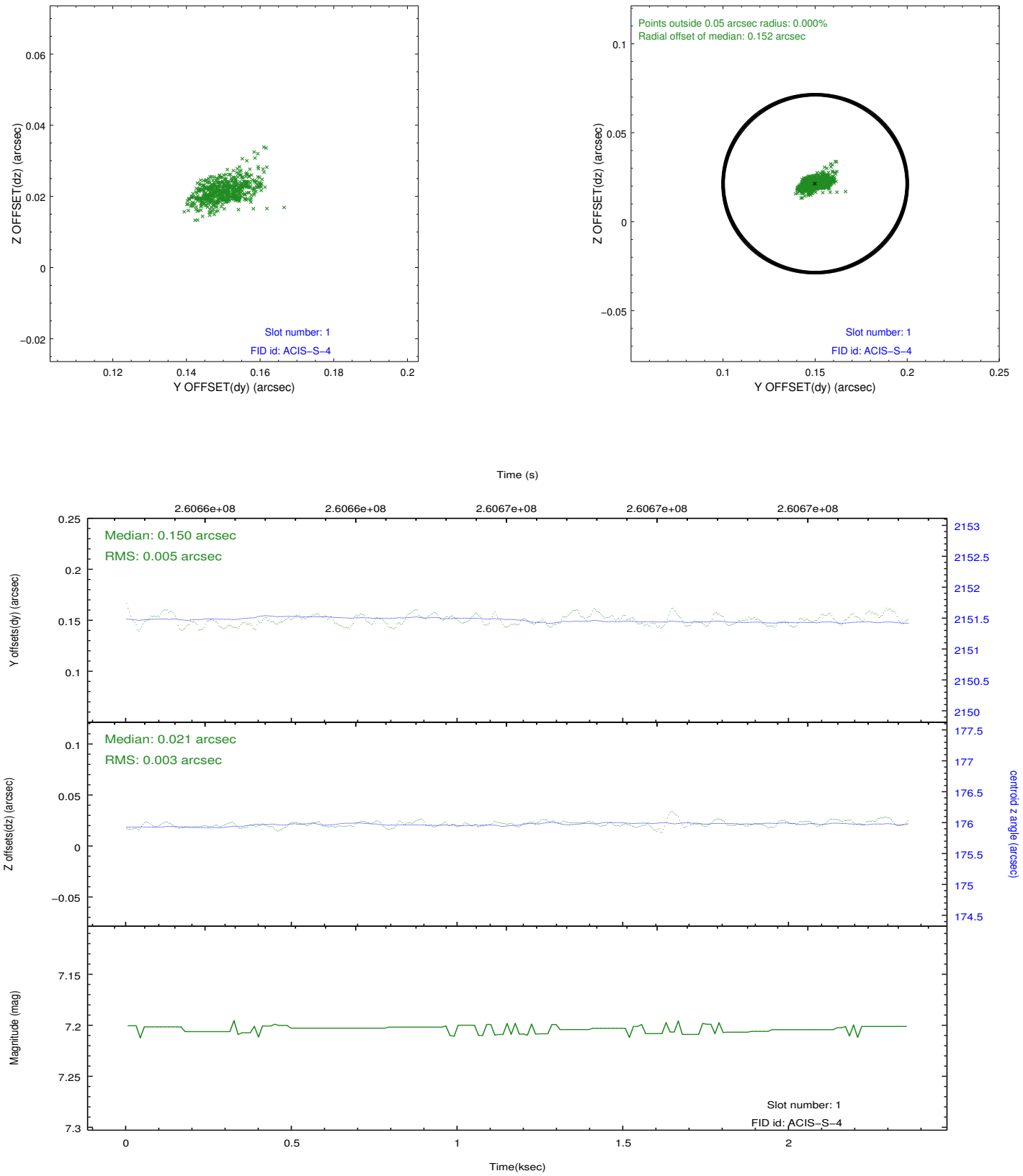


2.5 FID Slots

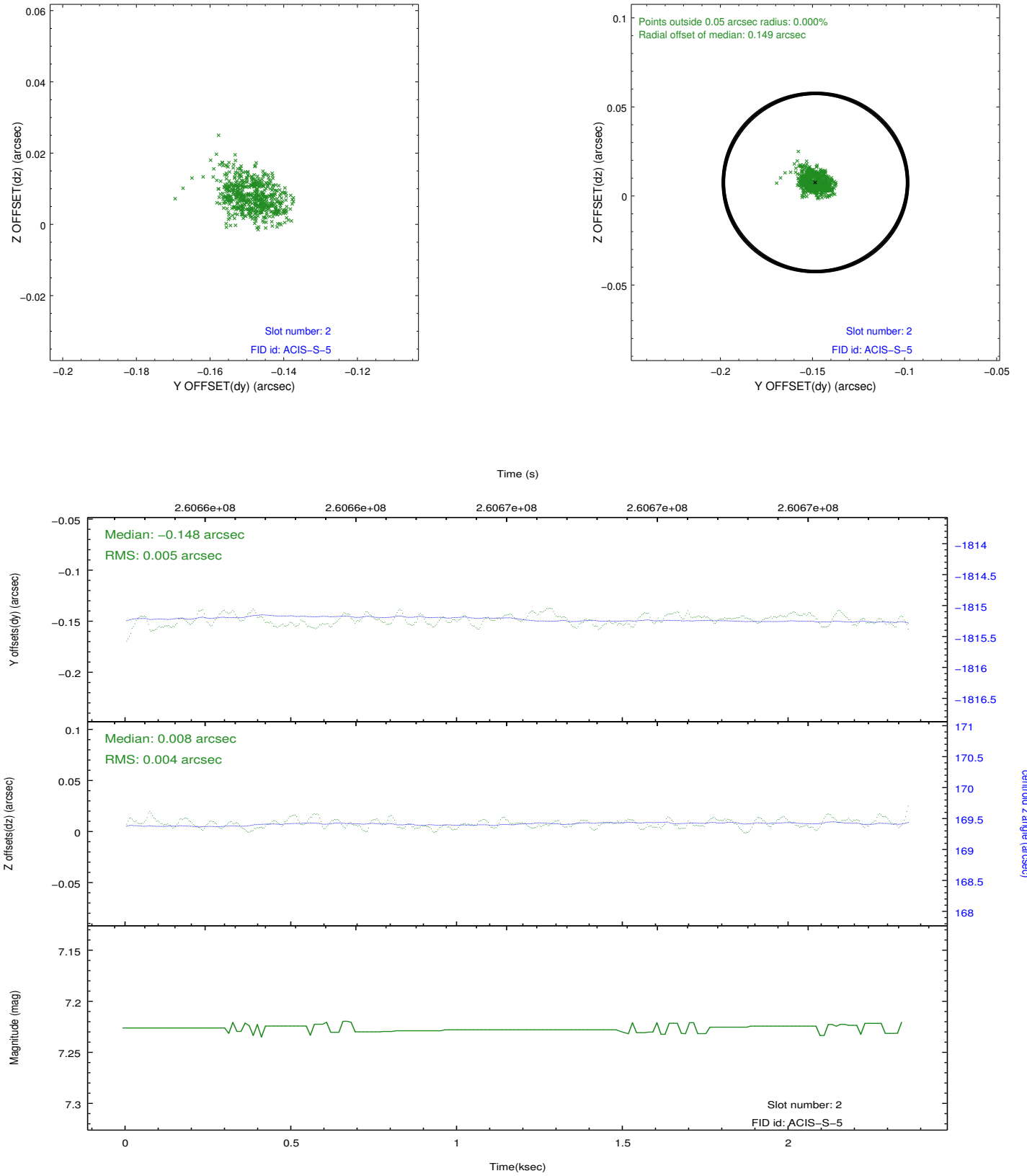
2.5.1 Slot 0



2.5.2 Slot 1



2.5.3 Slot 2



A Summary

A.1 Status

V&V Scientist	Jen Lauer
V&V Date (YYYY-MM-DD)	2012.03.30
V&V Edition	1
V&V Disposition and Status	OK
V&V Charge Time	1.92959999

A.2 Comments