

V&V Reference Report

L2 ASCDS Version : 8.4.3

Observation 7091 - L2 Version 2
Chandra X-Ray Center

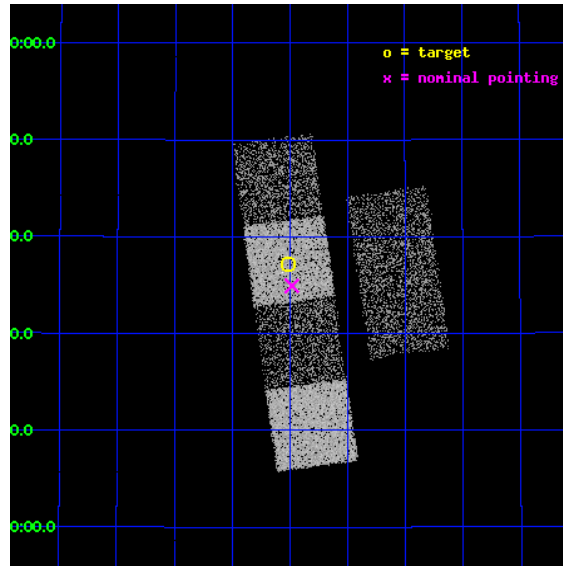
L2 Processing Date : Apr 3 2012

Contents

1	Front	2
2	OBI	3
2.1	OBI	3
2.1.1	Images	3
2.1.2	Bias	3
2.1.3	Parameters	4
2.1.4	Events	4
2.2	Compared Parameters	5
2.3	Aspect	6
2.4	Star Slots	9
2.4.1	Slot 3	9
2.4.2	Slot 4	10
2.4.3	Slot 5	11
2.4.4	Slot 6	12
2.4.5	Slot 7	13
2.5	FID Slots	14
2.5.1	Slot 0	14
2.5.2	Slot 1	15
2.5.3	Slot 2	16
A	Summary	17
A.1	Status	17
A.2	Comments	17

1 Front

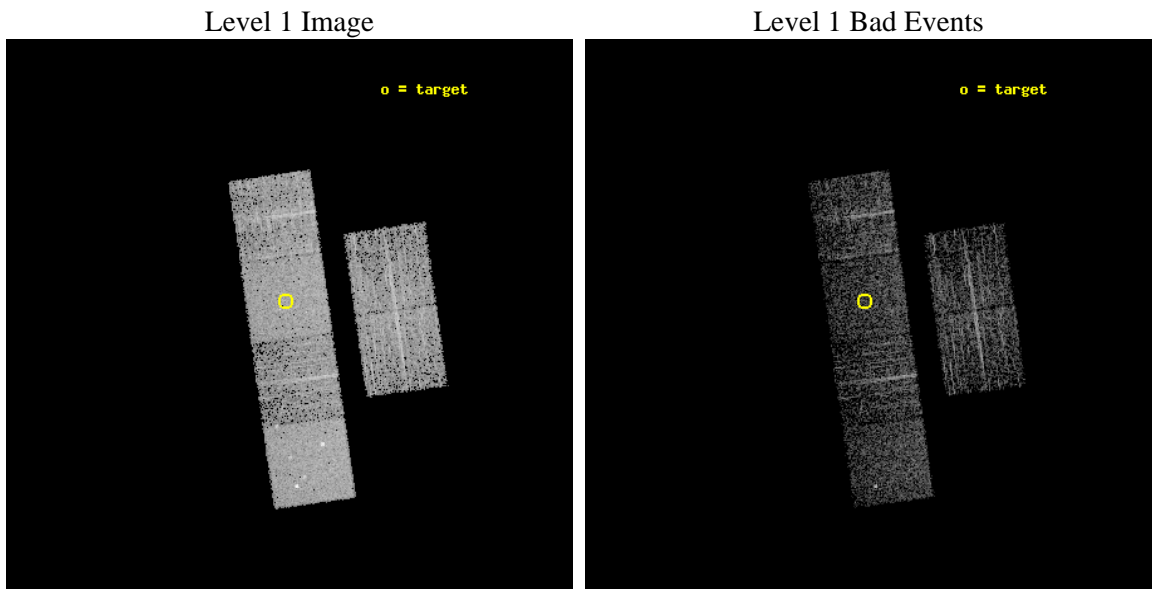
seq_num	600529	Sequence number
obs_id	7091	Observation id
title	A Complete Sample of ULX Host Galaxies	Proposal title
observer	Douglas Swartz	Principal investigator
object	NGC 3432	Source name
dtcycle	0	
cycle	P	events from which exps? Prim/Second/Both
ra_targ	163.129583	Observer's specified target RA [deg]
dec_targ	36.618889	Observer's specified target Dec [deg]
ra_nom	163.12090196709	Nominal RA [deg]
dec_nom	36.582244159141	Nominal Dec [deg]
roll_nom	261.95131942349	Nominal Roll [deg]
revision	2	Processing version of data
ontime	1951.9999927282	Sum of GTIs [s]
livetime	1927.282593467	Livetime [s]
ontime2	1951.9999927282	Sum of GTIs [s]
ontime3	1951.9999927282	Sum of GTIs [s]
ontime5	1951.9999927282	Sum of GTIs [s]
ontime6	1951.9999927282	Sum of GTIs [s]
ontime7	1951.9999927282	Sum of GTIs [s]
ontime8	1951.9999927282	Sum of GTIs [s]
l2events	29108	Number of level 2 events



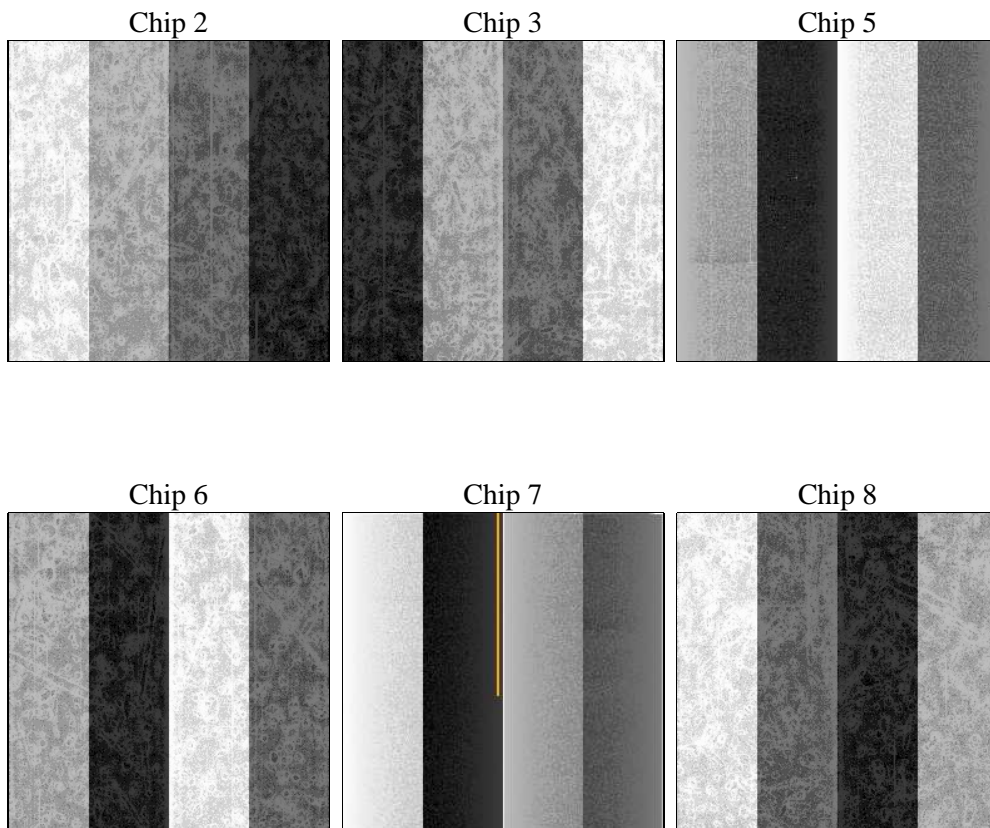
2 OBI

2.1 OBI

2.1.1 Images



2.1.2 Bias



2.1.3 Parameters

obi_num	0	Obi number	sched_exp_time	2000.000000	[s] Scheduled observation exposure time
ascdsver	8.4.3.1	Processing system revision	ontime	1951.9999927282	Sum of GTIs [s]
caldbver	4.4.9	 	ontime2	1951.9999927282	Sum of GTIs [s]
date	2012-04-04T00:39:31	Date and time of file creation	ontime3	1951.9999927282	Sum of GTIs [s]
revision	2	Processing version of data	ontime5	1951.9999927282	Sum of GTIs [s]
			ontime6	1951.9999927282	Sum of GTIs [s]
			ontime7	1951.9999927282	Sum of GTIs [s]
			ontime8	1951.9999927282	Sum of GTIs [s]
			l1events	128154	Number of level 1 events

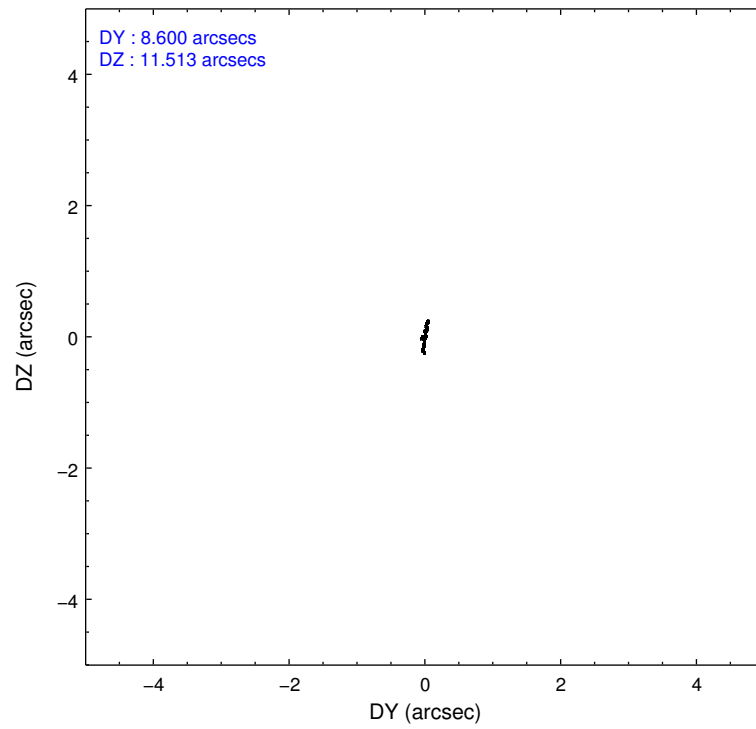
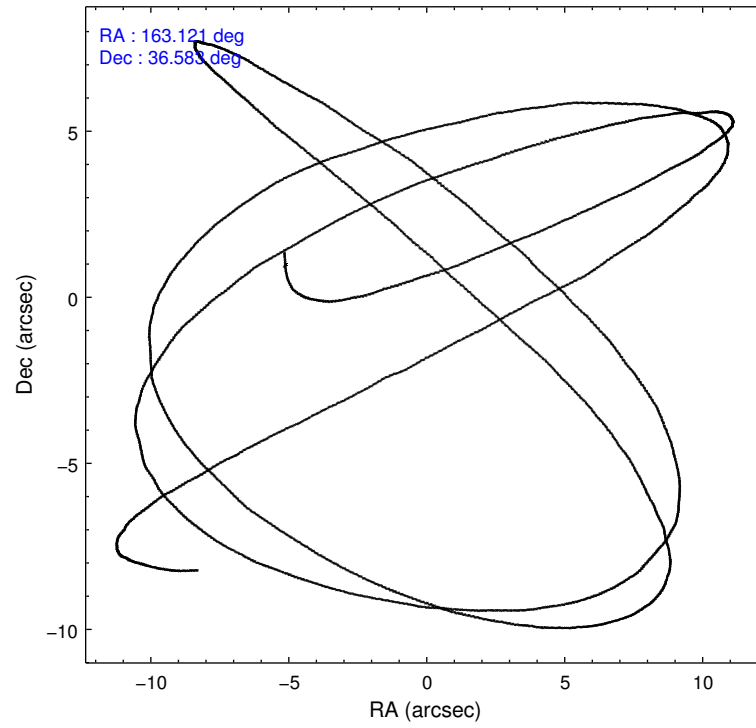
2.1.4 Events

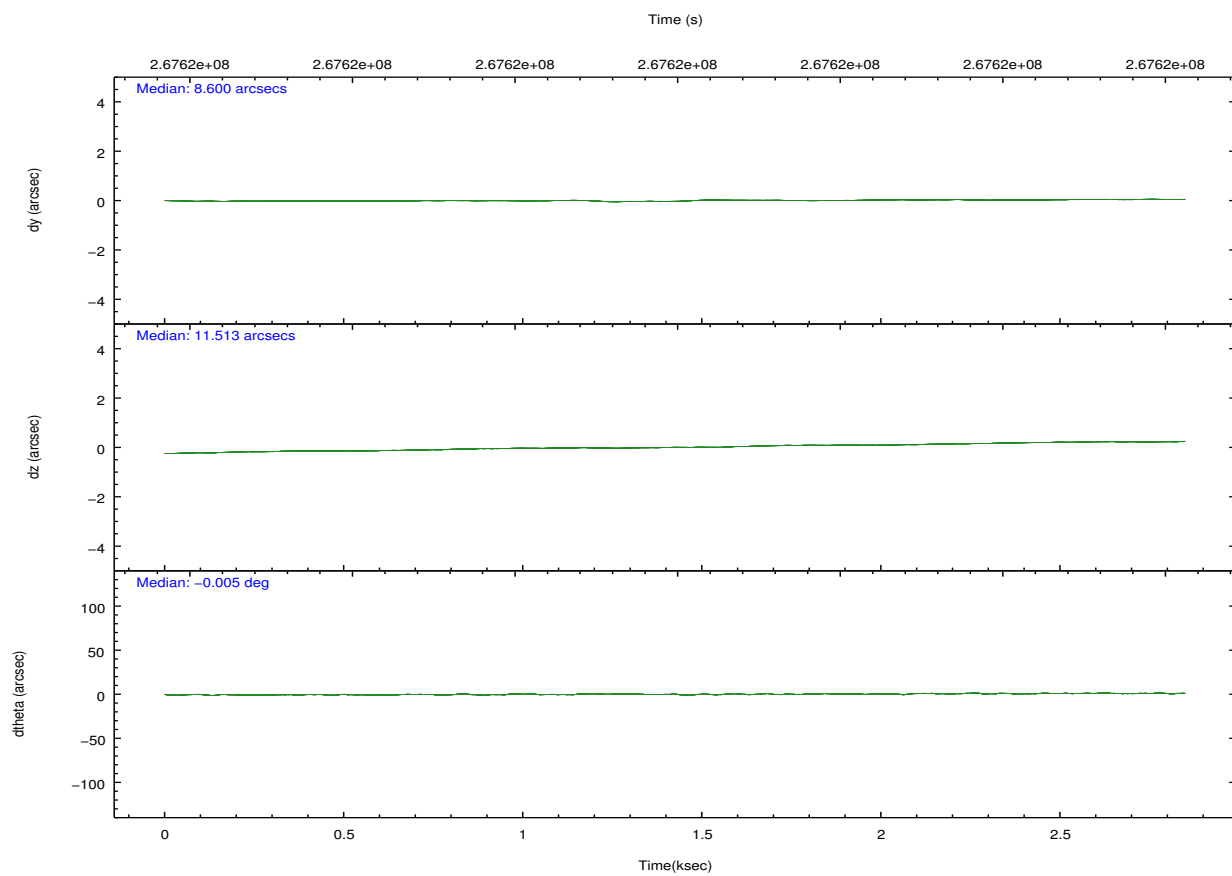
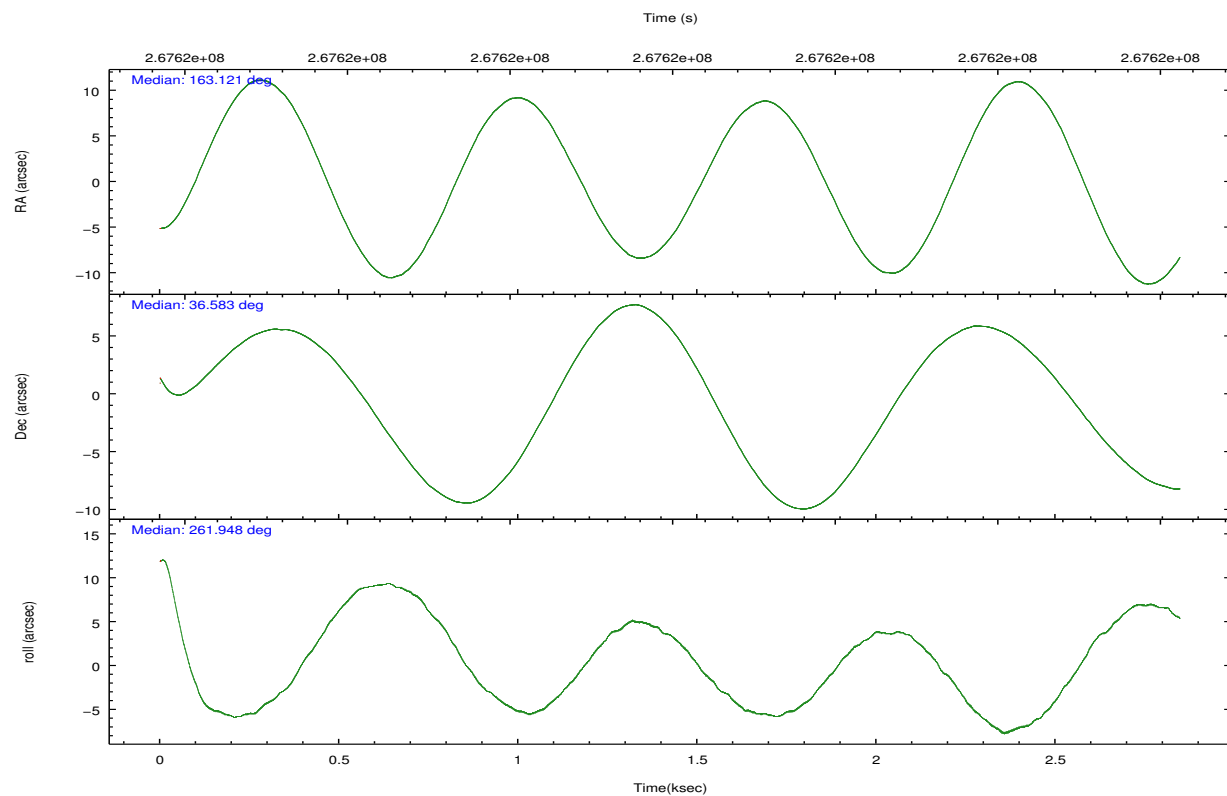
	ccd 2	ccd 3	ccd 5	ccd 6	ccd 7	ccd 8		ccd 2	ccd 3	ccd 5	ccd 6	ccd 7	ccd 8
level 1 events	19195	17682	27925	16976	24479	21897	grade 0 events	901	854	1546	820	951	1437
rejected events	17084	15705	14804	14912	14257	17169		4%	4%	5%	4%	3%	6%
rejected %	89%	88%	53%	87%	58%	78%	grade 1 events	14	11	40	4	18	11
								0%	0%	0%	0%	0%	0%
							grade 2 events	424	402	3949	433	2051	1058
								2%	2%	14%	2%	8%	4%
							grade 3 events	211	203	491	191	808	425
								1%	1%	1%	1%	3%	1%
							grade 4 events	197	189	443	216	945	437
								1%	1%	1%	1%	3%	1%
							grade 5 events	706	778	1915	851	2287	1126
								3%	4%	6%	5%	9%	5%
							grade 6 events	382	338	6712	408	5480	1378
								1%	1%	24%	2%	22%	6%
							grade 7 events	16360	14907	12829	14053	11939	16025
								85%	84%	45%	82%	48%	73%

2.2 Compared Parameters

Parameter	Planned	Actual	Parameter	Planned	Actual
Instrument	ACIS	ACIS	Obspar format version number	7	7
Detector	ACIS-235678	ACIS-235678	Obspar file type	PREDICTED	ACTUAL
Grating	NONE	NONE	Obspar update status	NONE	UPDATED
Data mode	FAINT	FAINT	Number of optional ACIS chips dropped	0	0
Observation mode	POINTING	POINTING	On-chip summing requested	N	N
[deg] Pointing RA	163.107777	163.1209019670947	Subarray requested	NONE	NONE
[deg] Pointing Dec	36.607268	36.5822441591405	Alternating exposures requested	N	N
[deg] Pointing Roll	261.802480	261.9513194234858	[s] Primary exposure time	0.000000	3.2
[mm] SIM focus pos	-0.684267	-0.6828225247311905			
[mm] SIM defocus	0	0.001444936568705701			
[mm] SIM translation stage pos	-190.132523	-190.1425803651734			
[mm] SIM translation stage offset	0	0.01005778216563158			
[s] Observation start time (MET)	267618418.184000	267617127.44648			
Observation start date	2006-06-25T10:25:53	2006-06-25T10:05:27			
[s] Observation end time (MET)	267620418.184000	267620652.42165			
Observation end date	2006-06-25T10:59:13	2006-06-25T11:04:12			
Read mode	TIMED	TIMED			

2.3 Aspect



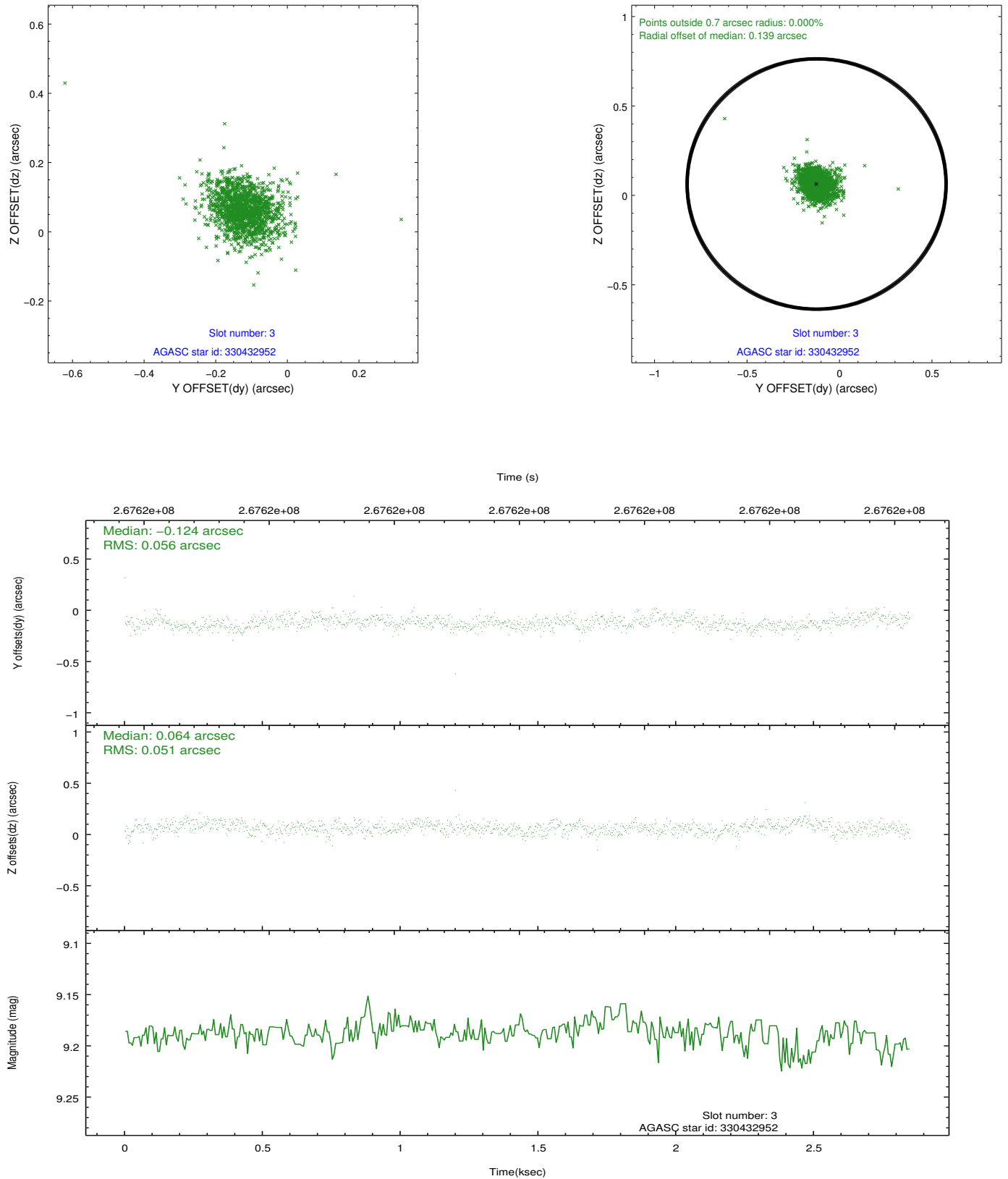


Slot Statistics

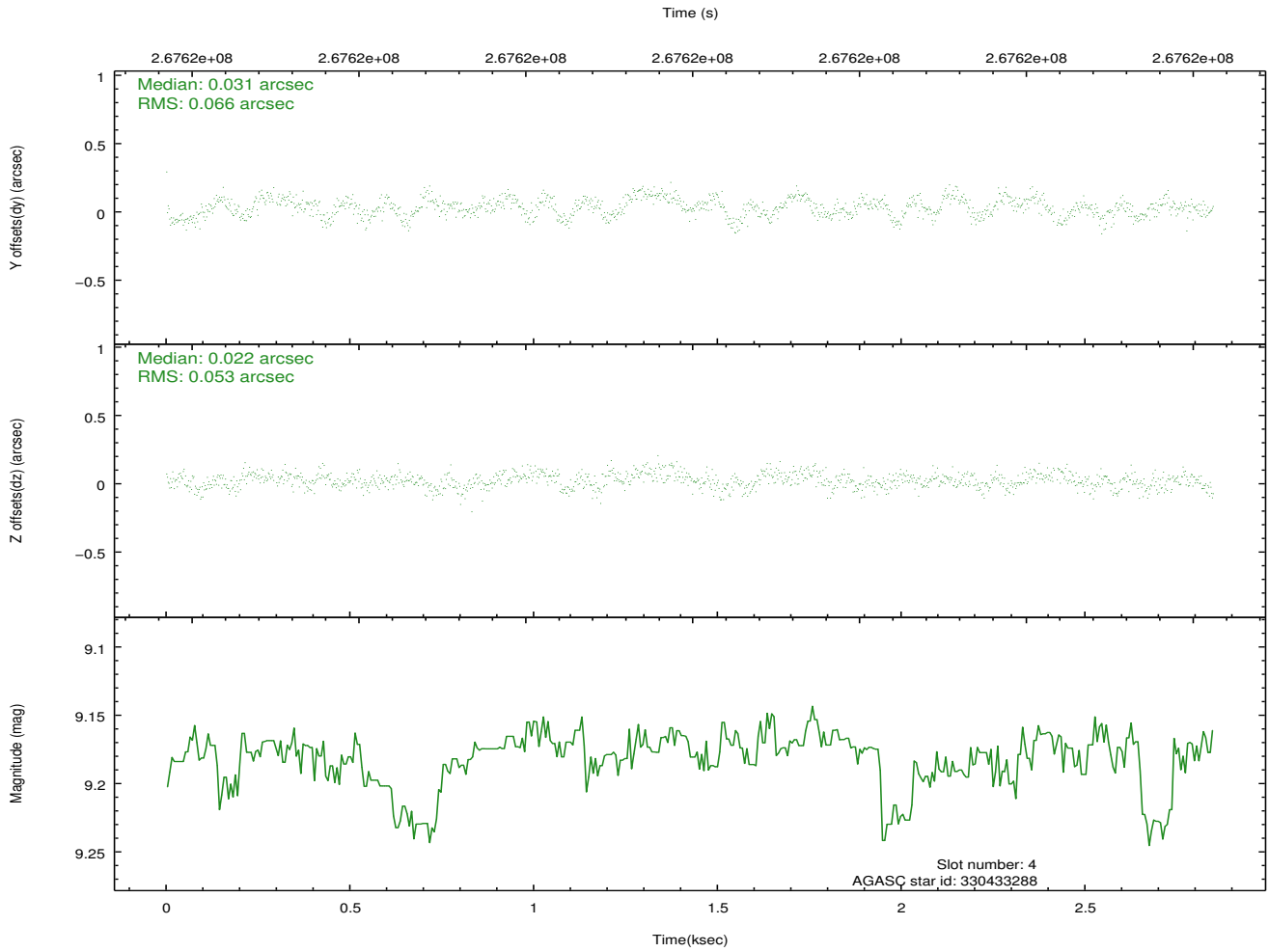
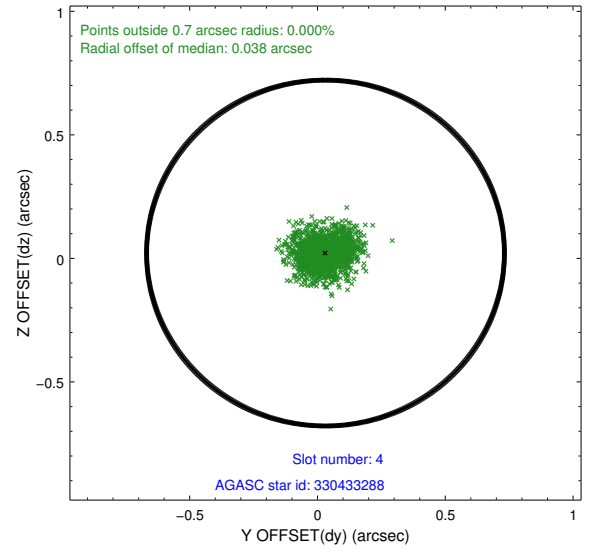
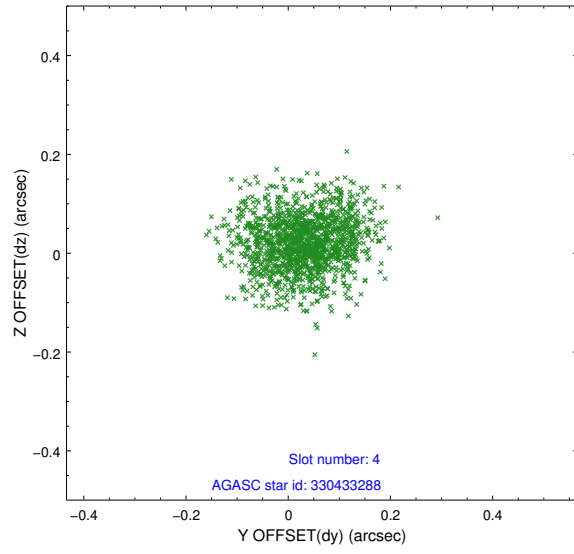
slot	status	id	mag	n_pts	med_dy	med_dz	dr1	dr2	ra	dec	mean_y	mean_z
0	FID	ACIS-S-2	7.11	695	-0.025	-0.017	0.008	0.012	0.000000	0.000000	-761.41	-1732.79
1	FID	ACIS-S-4	7.21	695	0.125	0.017	0.006	0.011	0.000000	0.000000	2150.98	173.43
2	FID	ACIS-S-5	7.23	695	-0.131	0.009	0.007	0.012	0.000000	0.000000	-1811.48	169.62
3	GUIDE	330432952	9.19	1384	-0.124	0.064	0.076	0.130	163.498534	37.208004	-2302.11	800.16
4	GUIDE	330433288	9.18	1383	0.031	0.022	0.093	0.147	163.721293	36.154548	1352.25	1997.67
5	GUIDE	330435040	8.89	1390	0.007	-0.095	0.065	0.101	163.266036	36.653693	-229.31	430.10
6	GUIDE	330437728	8.30	1390	0.095	-0.023	0.073	0.127	162.533662	36.098078	2048.40	-1391.83
7	GUIDE	330440896	9.09	1387	-0.013	0.035	0.097	0.149	162.874877	36.783554	-530.84	-756.10

2.4 Star Slots

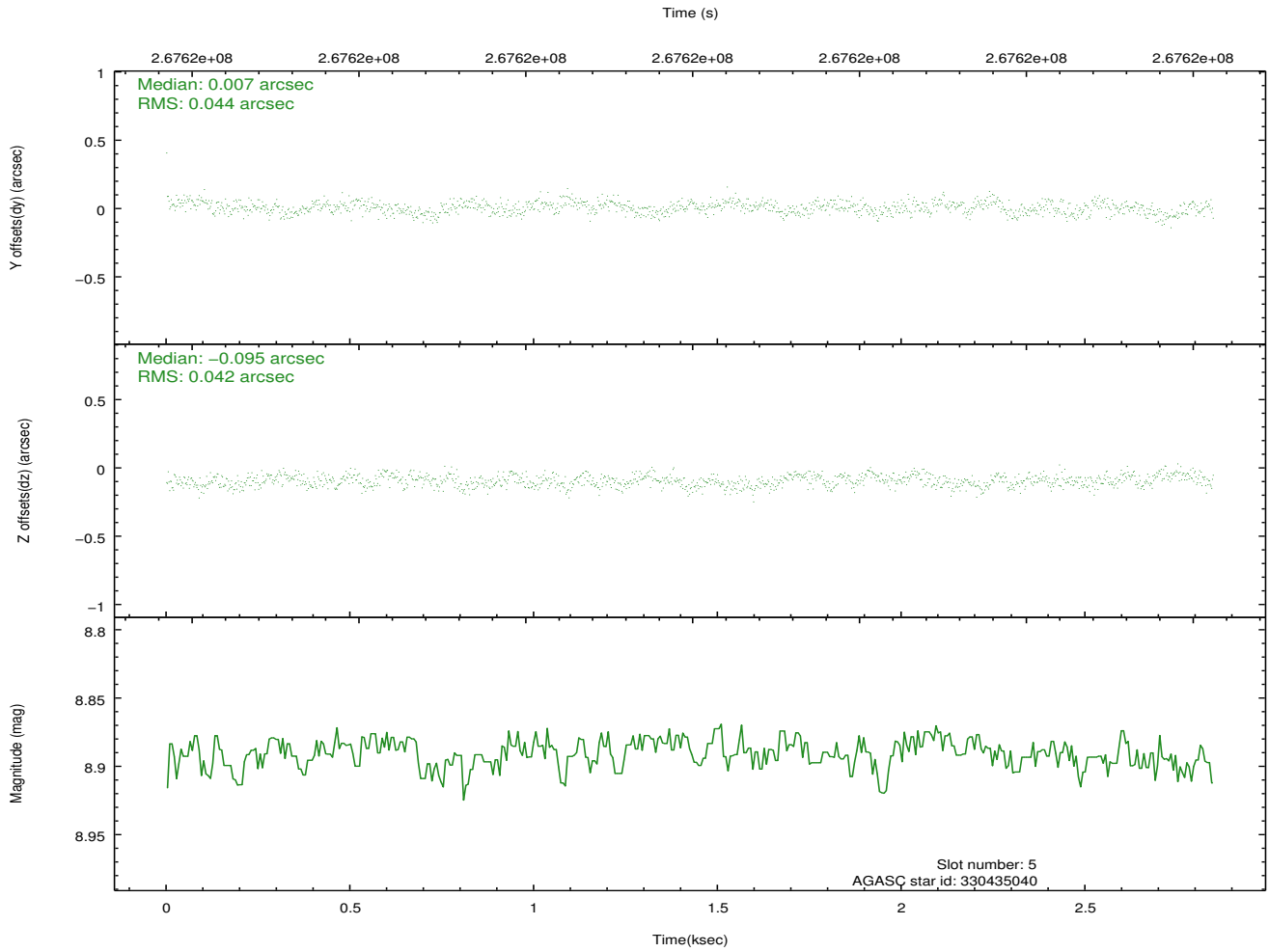
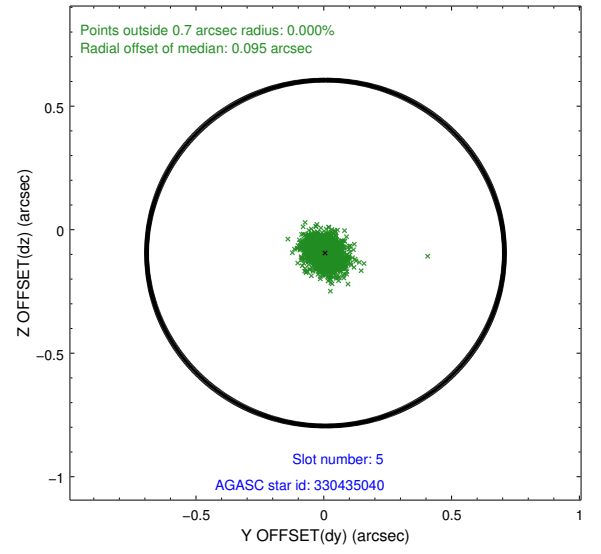
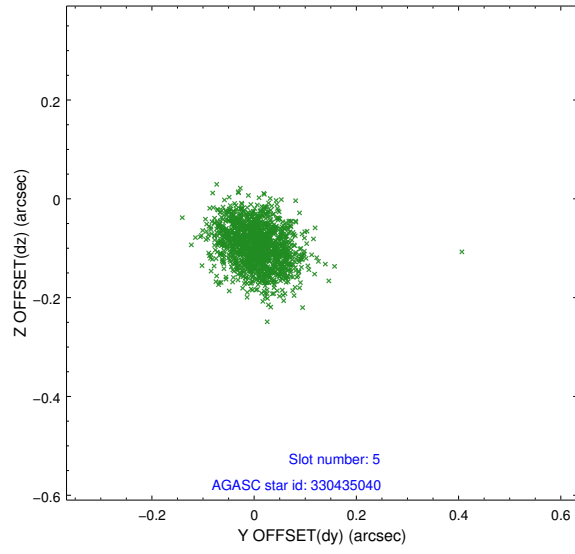
2.4.1 Slot 3



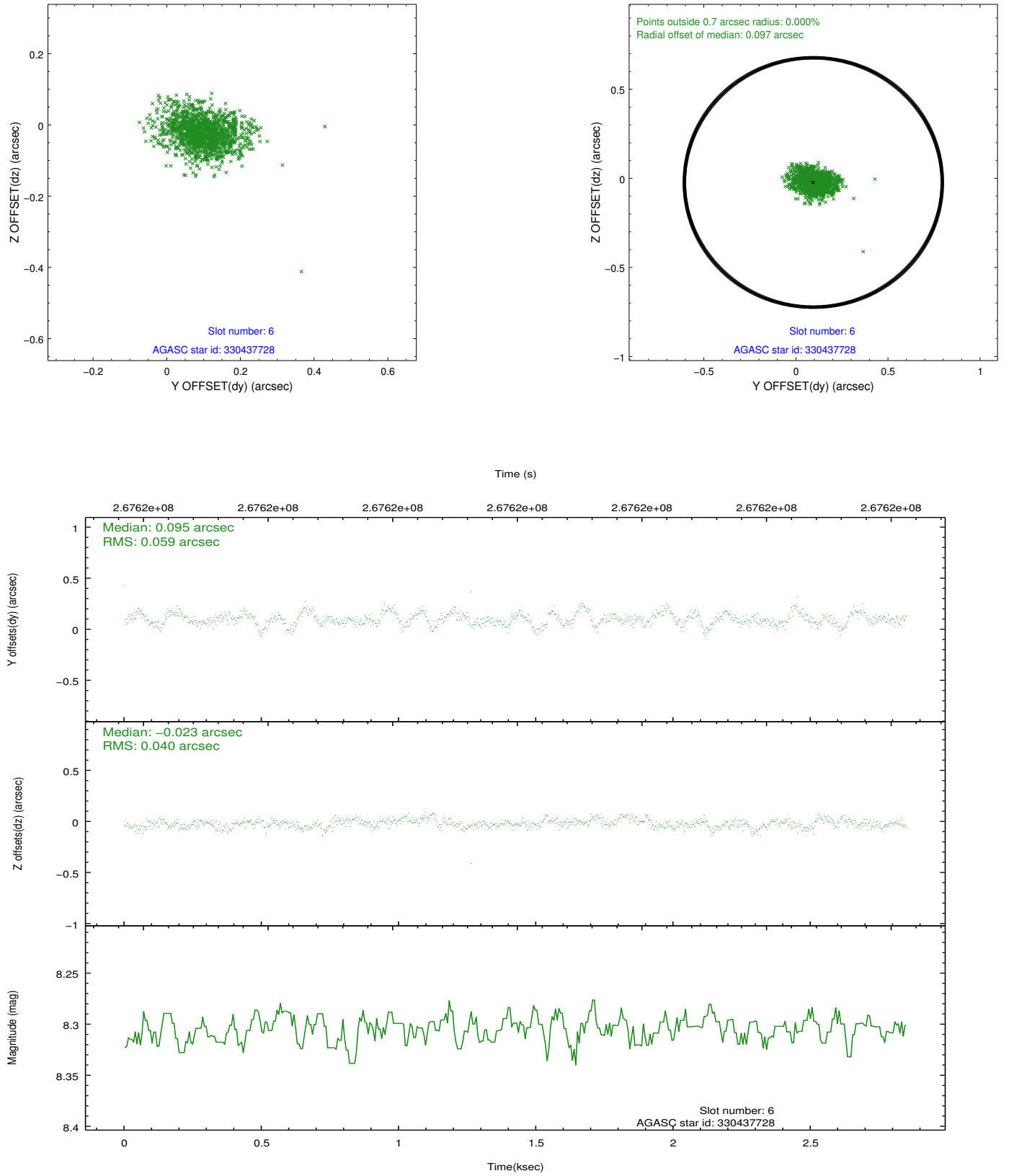
2.4.2 Slot 4



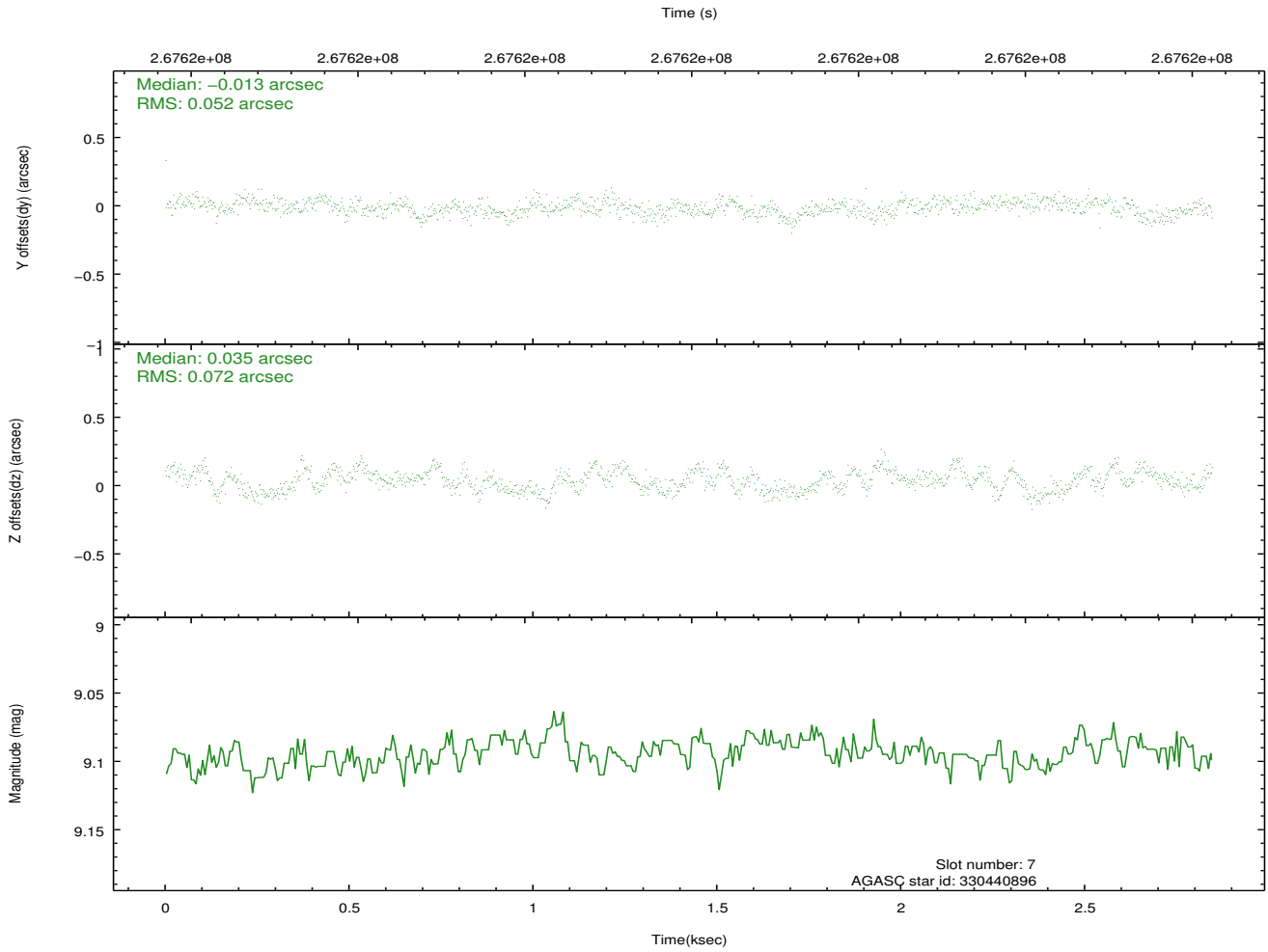
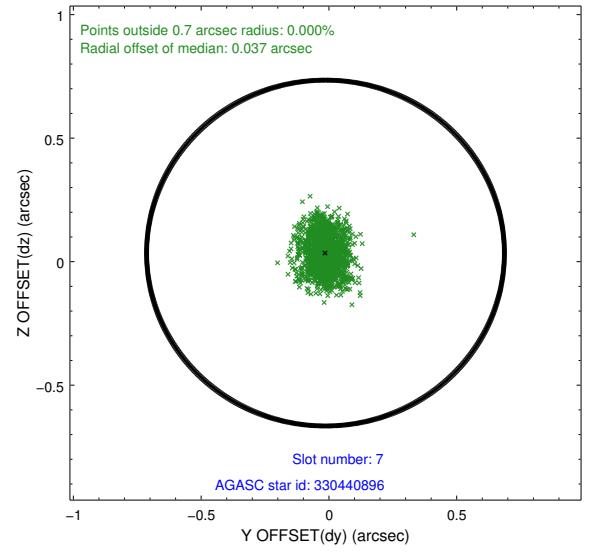
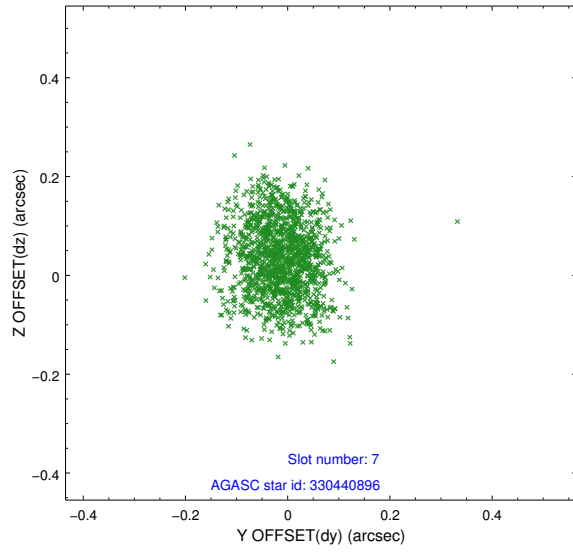
2.4.3 Slot 5



2.4.4 Slot 6

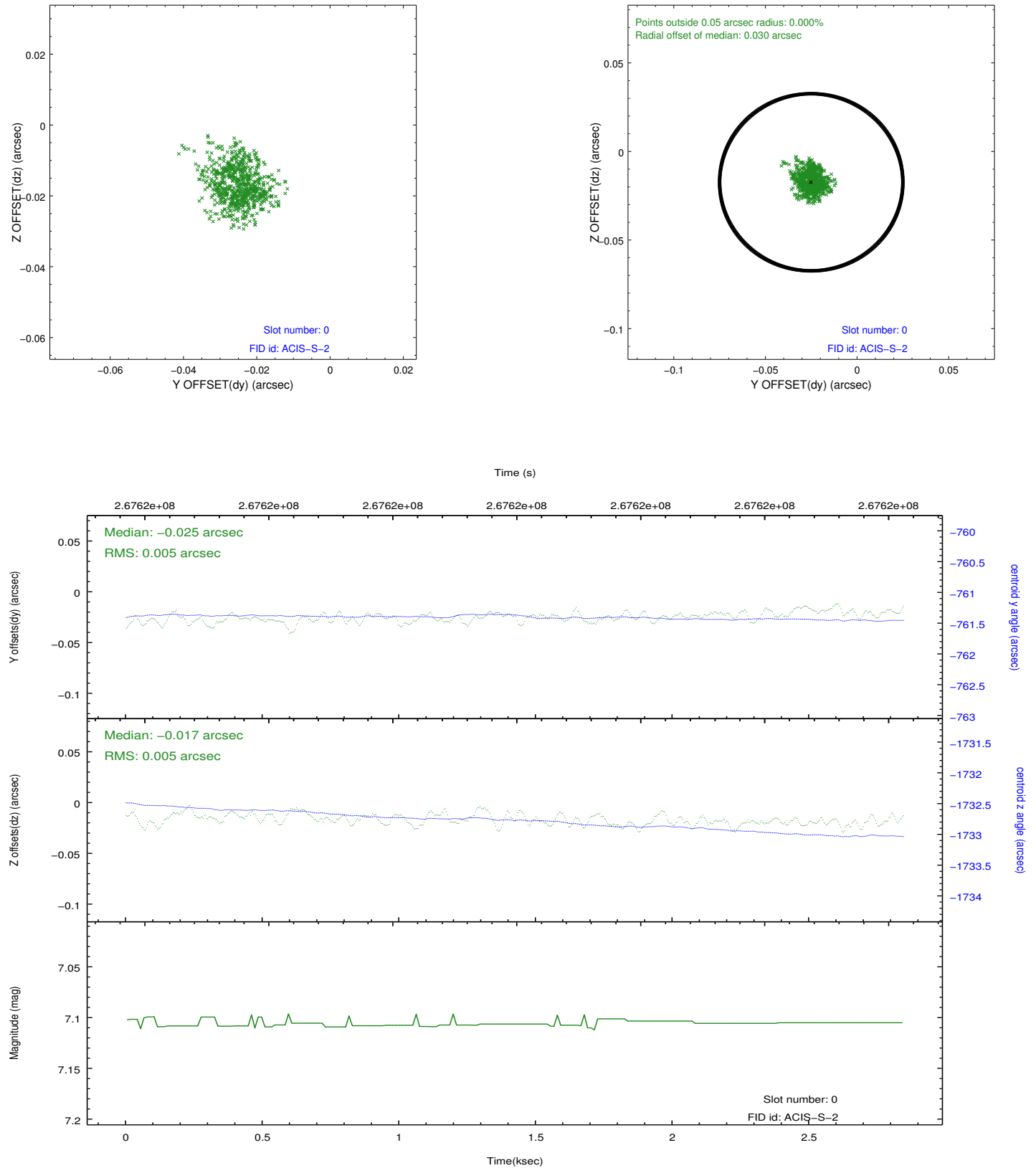


2.4.5 Slot 7

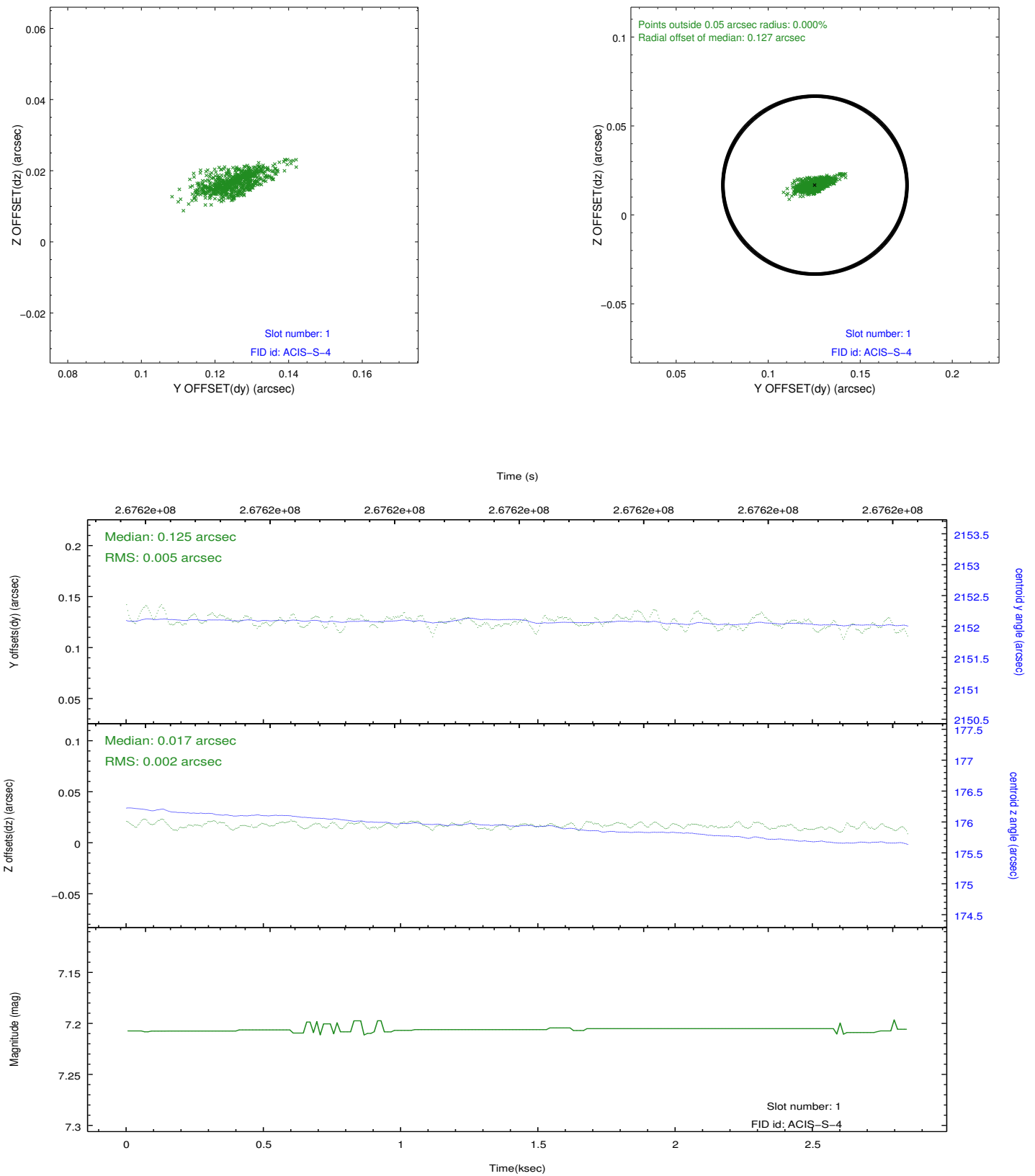


2.5 FID Slots

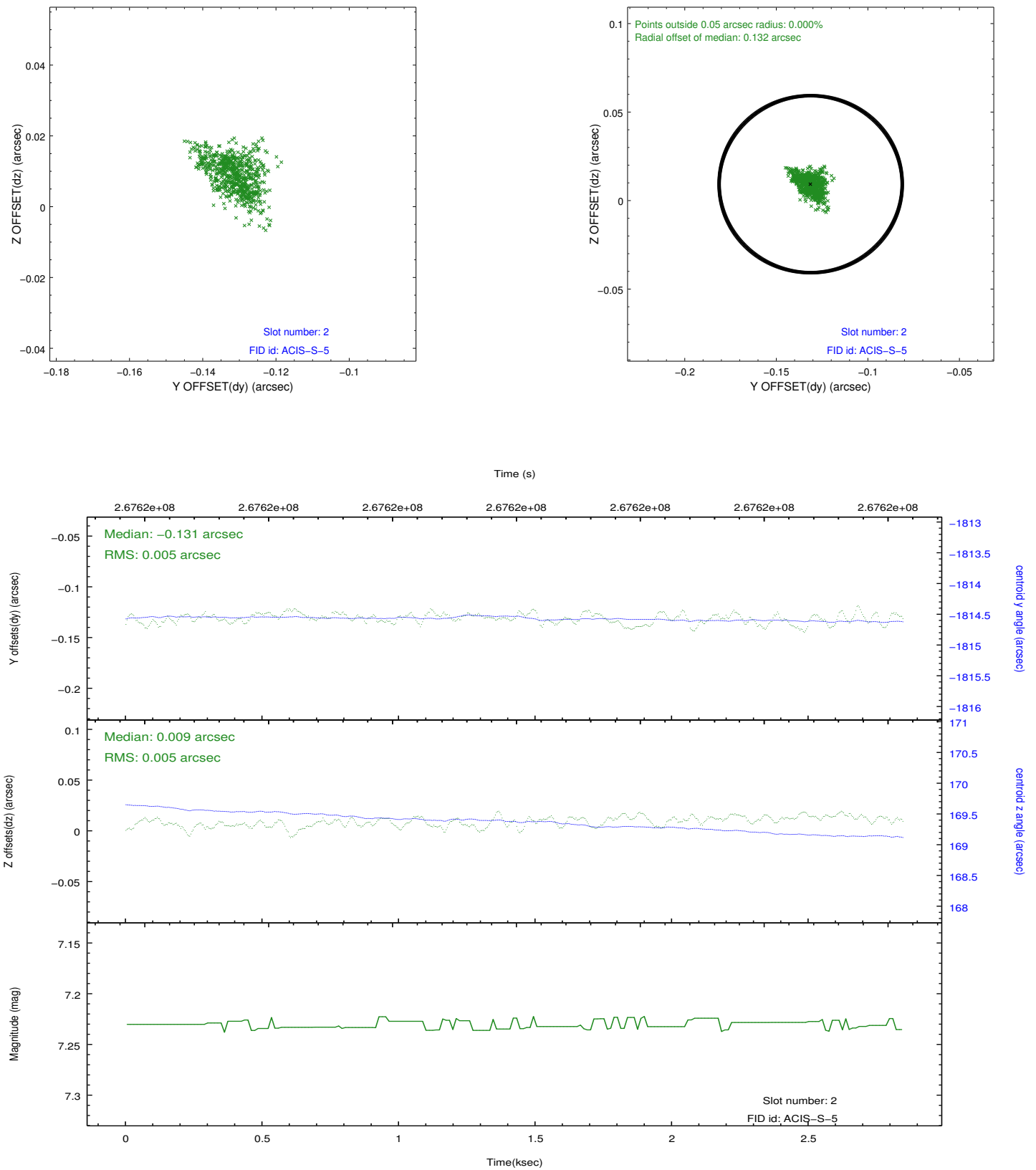
2.5.1 Slot 0



2.5.2 Slot 1



2.5.3 Slot 2



A Summary

A.1 Status

V&V Scientist	Beth Sundheim
V&V Date (YYYY-MM-DD)	2012.04.05
V&V Edition	1
V&V Disposition and Status	OK
V&V Charge Time	1.95199999

A.2 Comments