

V&V Reference Report

L2 ASCDS Version : 7.6.7.1

Observation 7083 - L2 Version 002
Chandra X-Ray Center

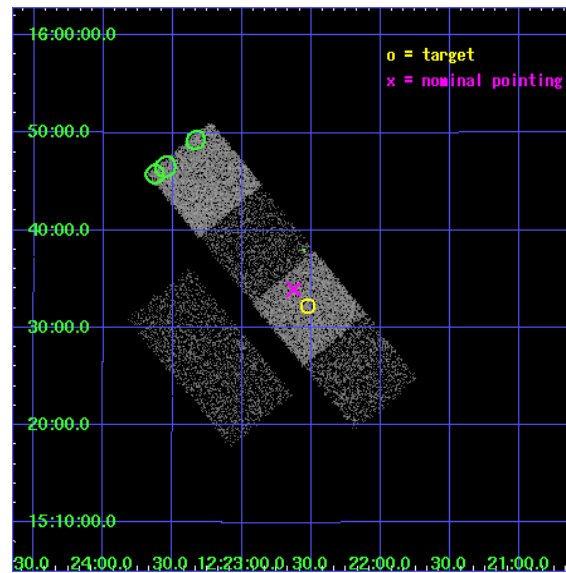
L2 Processing Date : Apr 4 2006

Contents

1	Front	2
2	OBI	3
2.1	OBI	3
2.1.1	Images	3
2.1.2	Bias	3
2.1.3	Parameters	4
2.1.4	Events	4
2.2	Compared Parameters	5
2.3	Aspect	6
2.4	Star Slots	9
2.4.1	Slot 3	9
2.4.2	Slot 4	10
2.4.3	Slot 5	11
2.4.4	Slot 6	12
2.4.5	Slot 7	13
2.5	FID Slots	14
2.5.1	Slot 0	14
2.5.2	Slot 1	15
2.5.3	Slot 2	16
3	Point Sources	17
A	Summary	18
A.1	Status	18
A.2	Comments	18

1 Front

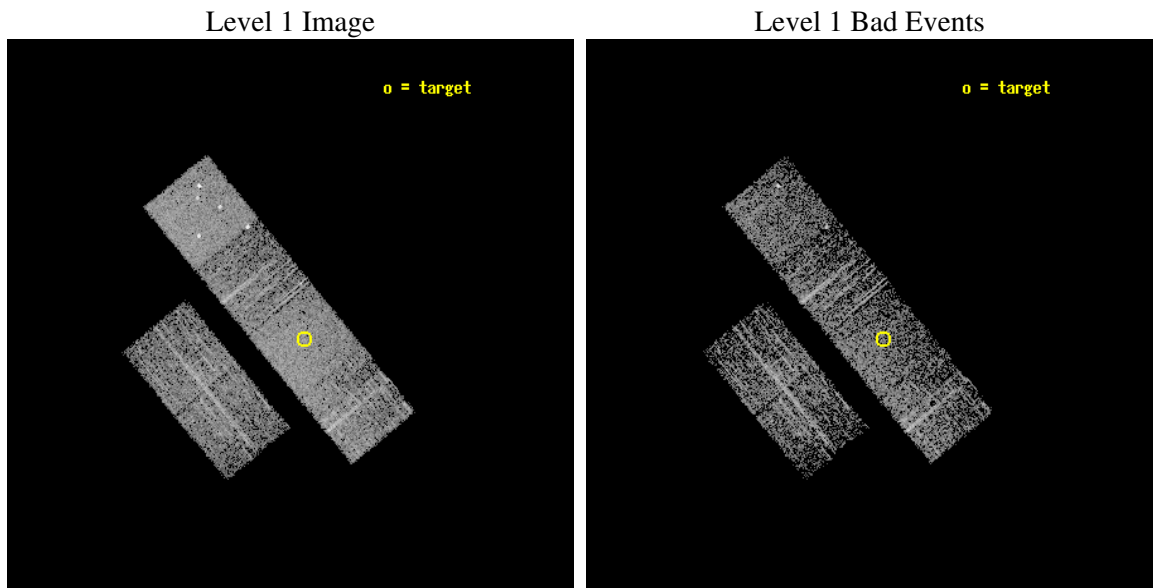
seq_num	600521
obs_id	7083
title	A Complete Sample of ULX Host Galaxies
observer	Dr. Douglas Swartz
object	NGC 4312
dtcycle	0
cycle	P
ra_targ	185.630417
dec_targ	15.538111
ra_nom	185.65632971559
dec_nom	15.565683384362
roll_nom	50.533571308706
revision	2
ontime	1961.5999926925
livetime	1936.7610324513
ontime2	1961.5999926925
ontime3	1961.5999926925
ontime5	1961.5999926925
ontime6	1961.5999926925
ontime7	1961.5999926925
ontime8	1961.5999926925
l2events	24573



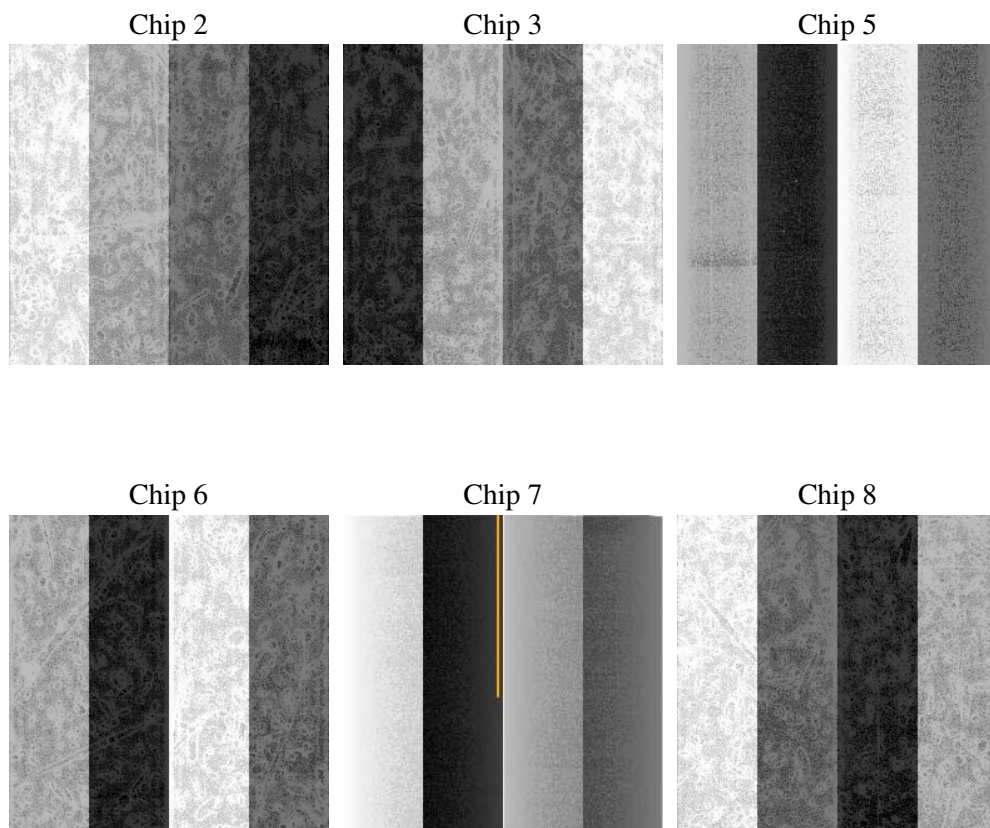
2 OBI

2.1 OBI

2.1.1 Images



2.1.2 Bias



2.1.3 Parameters

obi_num	0
ascdsver	7.6.7.1
caldbver	3.2.1
date	2006-04-04T19:26:12
revision	2

sched_exp_time	2000.000000
ontime	1964.051160872
ontime2	1964.051160872
ontime3	1964.051160872
ontime5	1964.0511807799
ontime6	1964.051160872
ontime7	1964.051160872
ontime8	1964.051160872
l1events	111445

2.1.4 Events

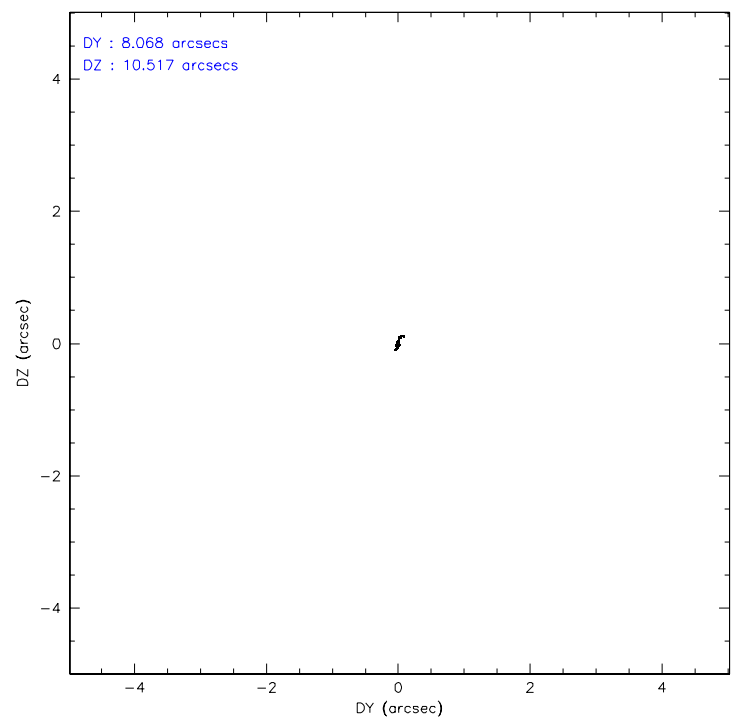
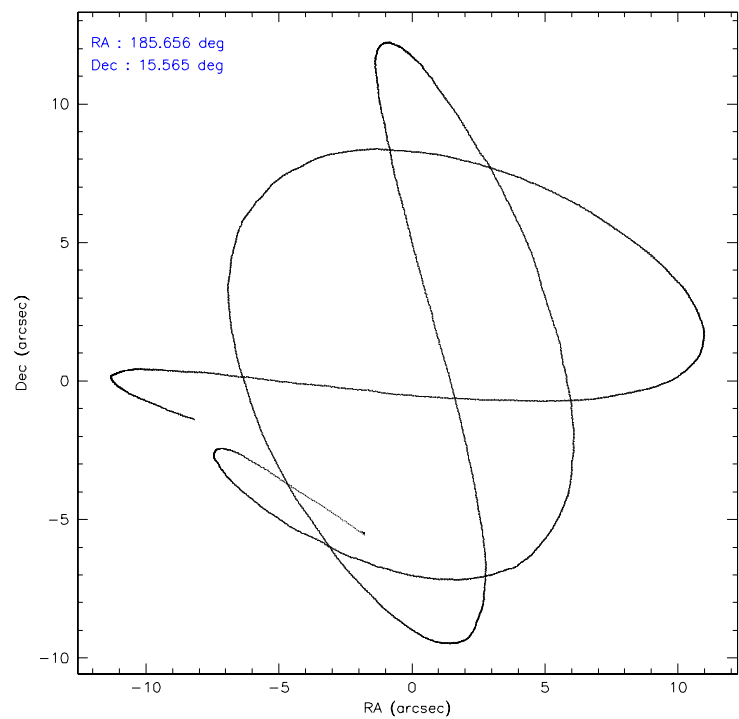
	ccd 2	ccd 3	ccd 5	ccd 6	ccd 7	ccd 8
level 1 events	15483	14384	24660	16035	21297	19586
rejected events	13719	12635	13301	13991	13076	15273
rejected %	88%	87%	53%	87%	61%	77%

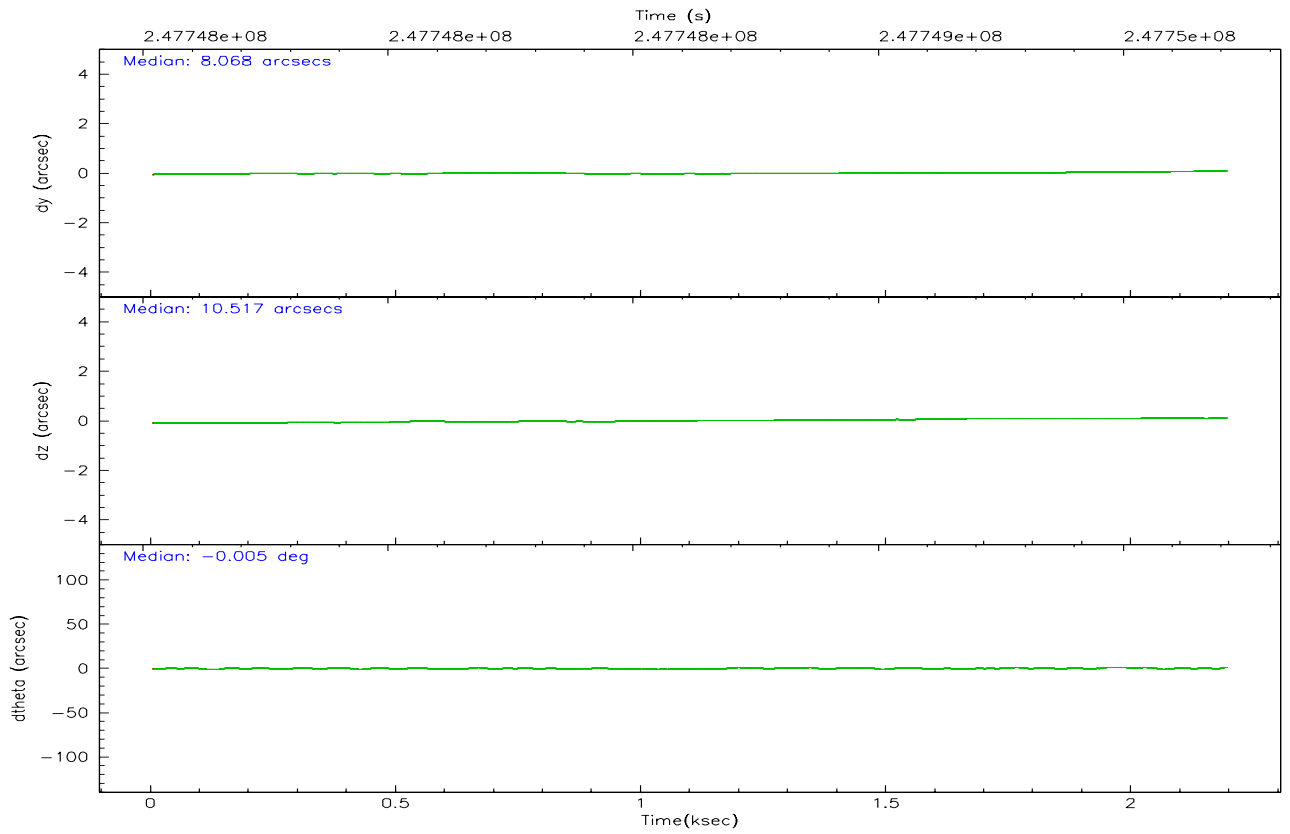
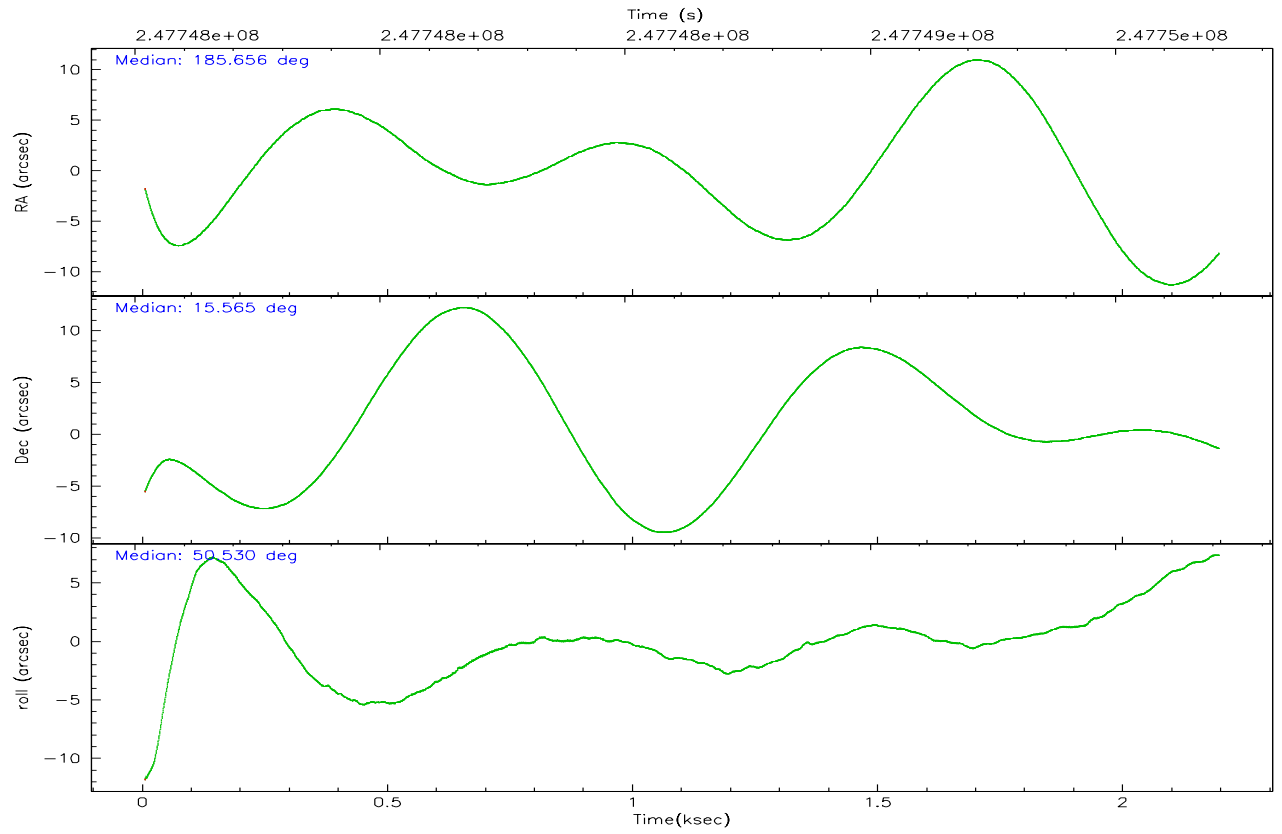
	ccd 2	ccd 3	ccd 5	ccd 6	ccd 7	ccd 8
grade 0 events	785	808	1465	860	488	1371
	5%	5%	5%	5%	2%	6%
grade 1 events	6	8	69	10	14	13
	0%	0%	0%	0%	0%	0%
grade 2 events	377	331	3458	386	2064	951
	2%	2%	14%	2%	9%	4%
grade 3 events	160	145	249	201	403	499
	1%	1%	1%	1%	1%	2%
grade 4 events	169	173	243	197	390	366
	1%	1%	0%	1%	1%	1%
grade 5 events	602	646	1186	726	1343	889
	3%	4%	4%	4%	6%	4%
grade 6 events	274	300	5960	402	4901	1132
	1%	2%	24%	2%	23%	5%
grade 7 events	13110	11973	12030	13253	11694	14365
	84%	83%	48%	82%	54%	73%

2.2 Compared Parameters

Parameter	Planned	Actual	Parameter	Planned	Actual
Instrument	ACIS	ACIS	Obspar format version number	6	6
Detector	ACIS-235678	ACIS-235678	Obspar file type	PREDICTED	ACTUAL
Grating	NONE	NONE	Obspar update status	NONE	UPDATED
Data mode	FAINT	FAINT	On-chip summing requested	N	N
Observation mode	POINTING	POINTING	Subarray requested	NONE	NONE
Pointing RA	185.652213	185.656329715587	Alternating exposures requested	N	N
Pointing Dec	15.538908	15.5656833843623	Primary exposure time	0.000000	3.2
Pointing Roll	50.378177	50.53357130870636			
SIM focus pos (mm)	-0.684267	-0.6828225247311905			
SIM defocus (mm)	0	0.001444936568705701			
SIM translation stage pos (mm)	-190.132523	-190.1400660498719			
SIM translation stage offset (mm)	0	0.00754346686406393			
Observation start time	247747717.184000	247746683.57302			
Observation start date	2005-11-07T10:47:33	2005-11-07T10:31:23			
Observation end time	247749717.184000	247749922.57316			
Observation end date	2005-11-07T11:20:53	2005-11-07T11:25:22			
Read mode	TIMED	TIMED			

2.3 Aspect



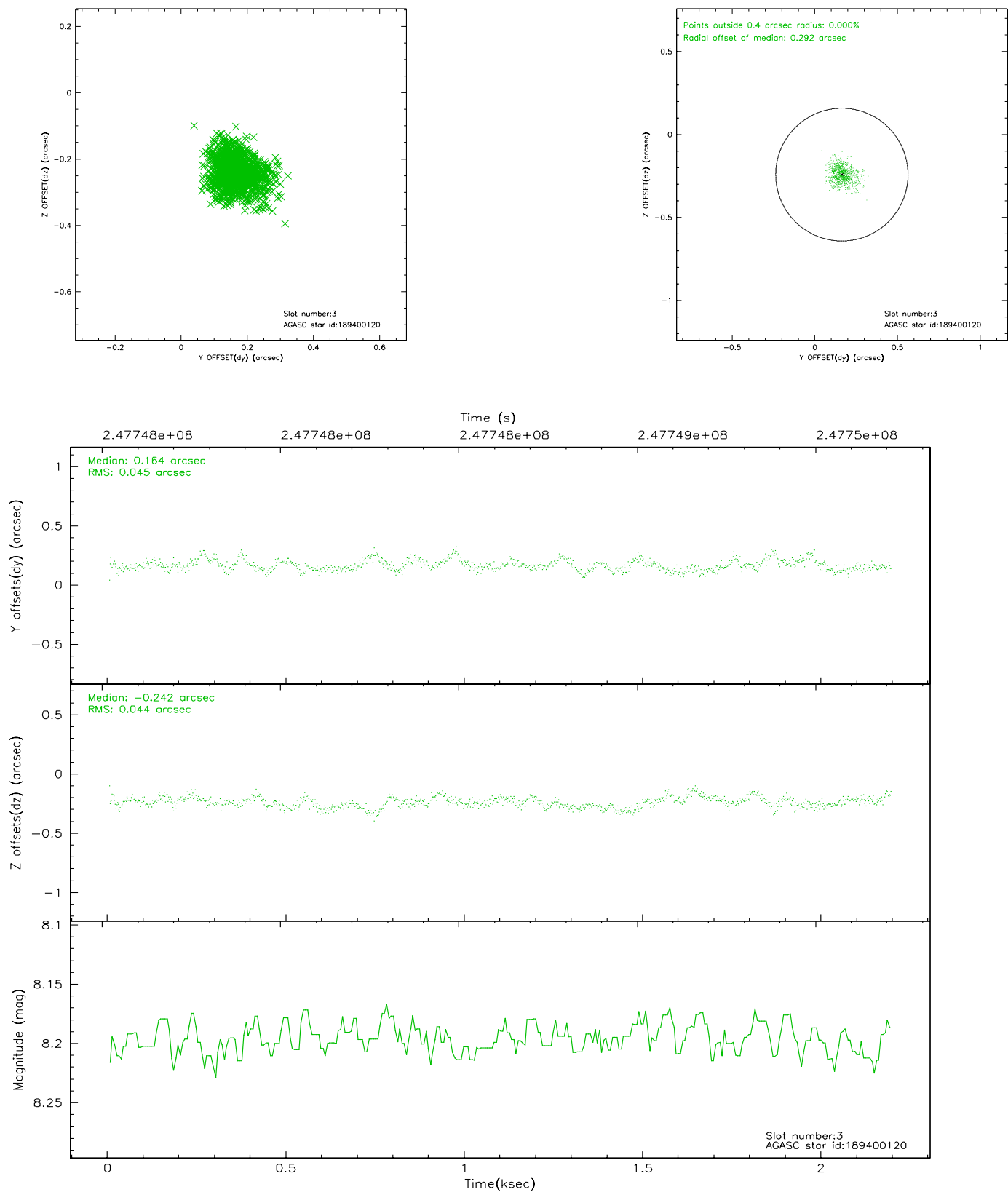


Slot Statistics

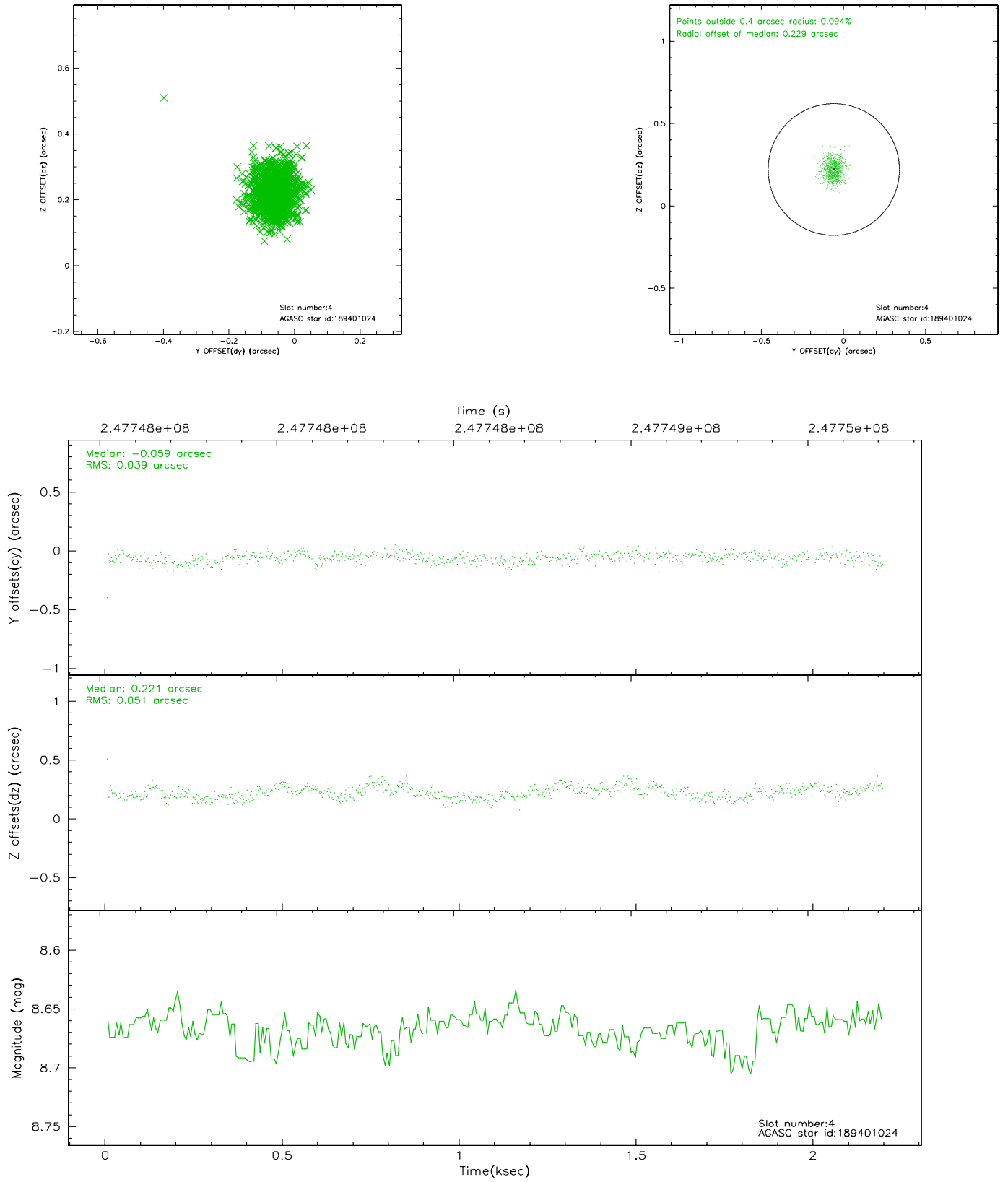
slot	status	id	mag	n_pts	med_dy	med_dz	dr1	dr2	ra	dec	mean_y	mean_z
0	FID	ACIS-S-2	7.11	535	-0.033	0.003	0.006	0.009	0.000000	0.000000	-760.84	-1731.80
1	FID	ACIS-S-4	7.21	535	0.082	0.015	0.004	0.007	0.000000	0.000000	2151.16	173.69
2	FID	ACIS-S-5	7.23	535	-0.081	-0.009	0.006	0.009	0.000000	0.000000	-1809.95	170.62
3	GUIDE	189400120	8.20	1069	0.164	-0.242	0.066	0.109	185.025387	15.714800	-894.94	2078.97
4	GUIDE	189401024	8.67	1069	-0.059	0.221	0.068	0.106	185.977630	15.617765	938.65	-685.15
5	GUIDE	189403680	8.83	1070	0.239	0.004	0.066	0.109	185.171503	15.144043	-2157.03	380.53
6	GUIDE	189410648	8.13	1070	-0.199	-0.120	0.056	0.090	185.747145	16.243433	2161.30	1365.10
7	GUIDE	189419528	6.34	1069	-0.146	0.126	0.062	0.100	185.202988	15.540976	-984.18	1207.40

2.4 Star Slots

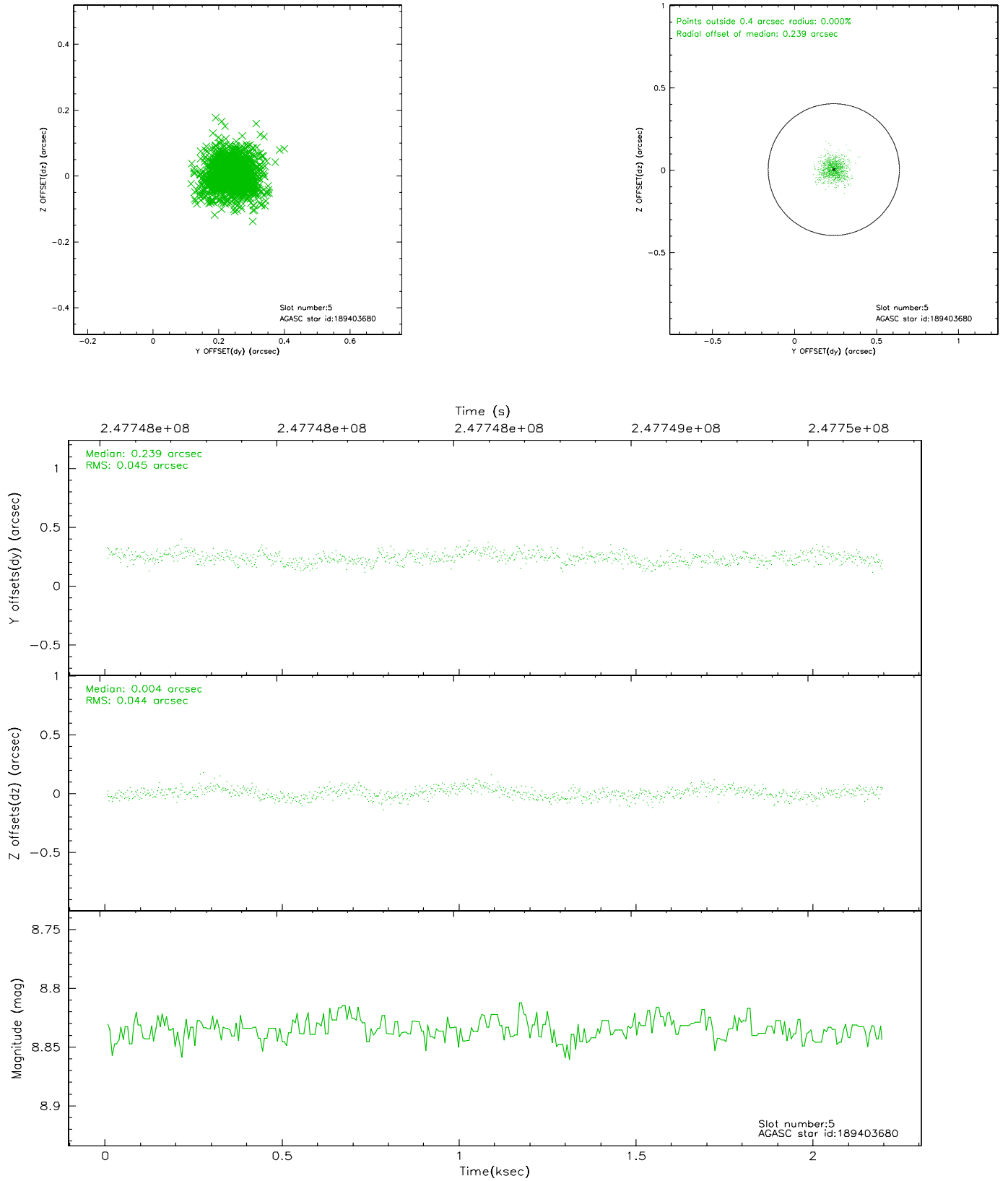
2.4.1 Slot 3



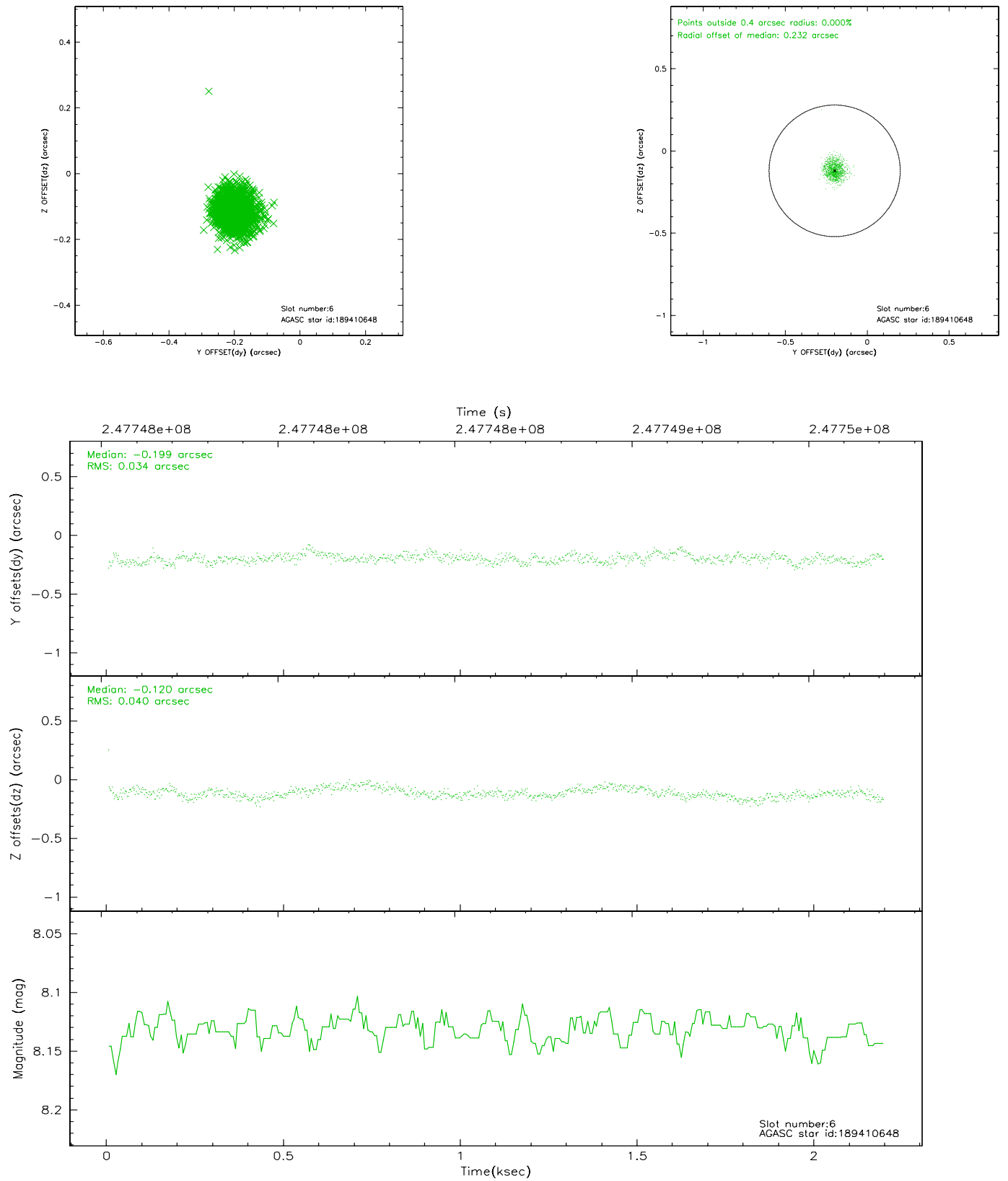
2.4.2 Slot 4



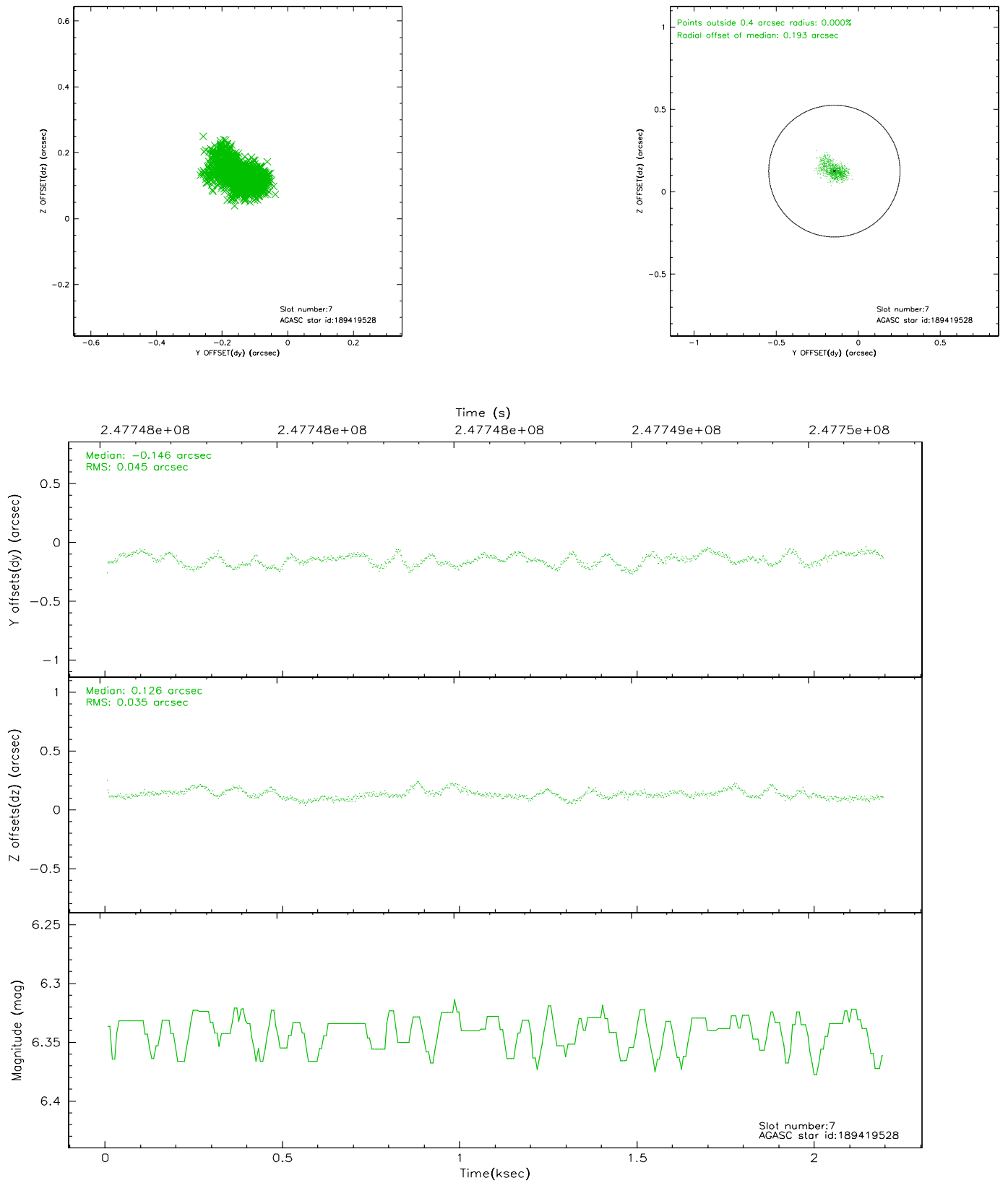
2.4.3 Slot 5



2.4.4 Slot 6

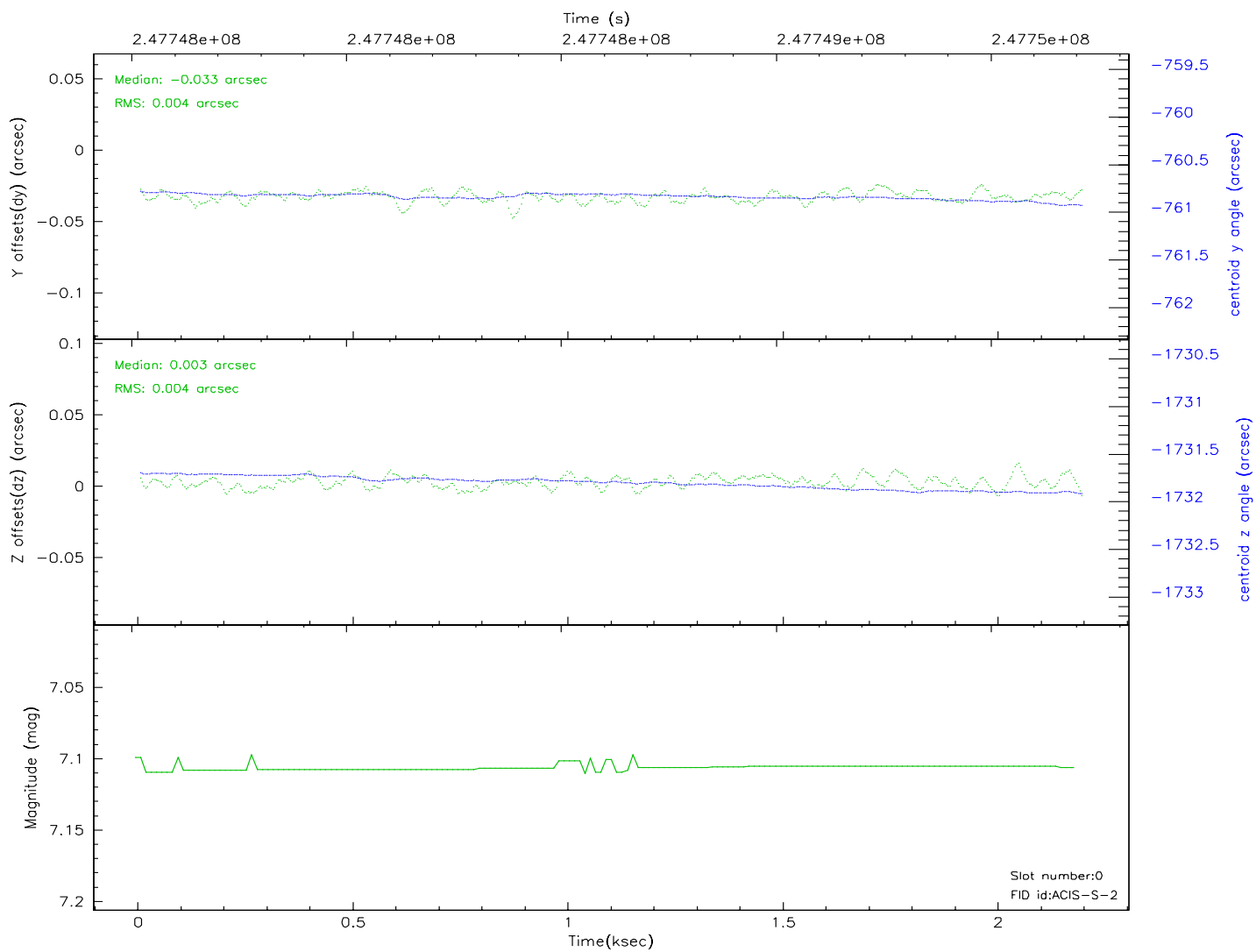
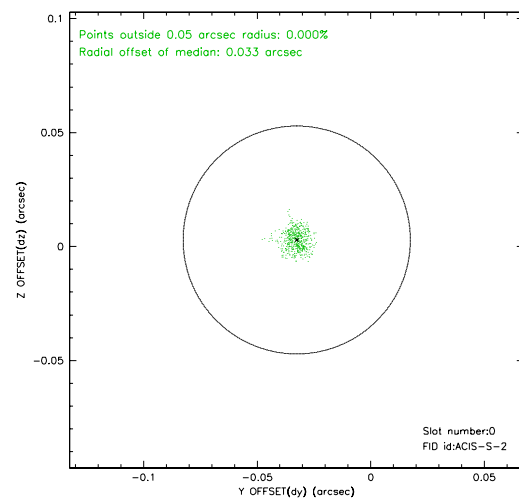
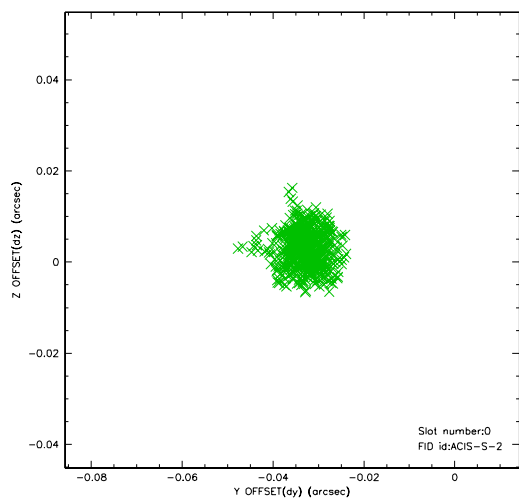


2.4.5 Slot 7

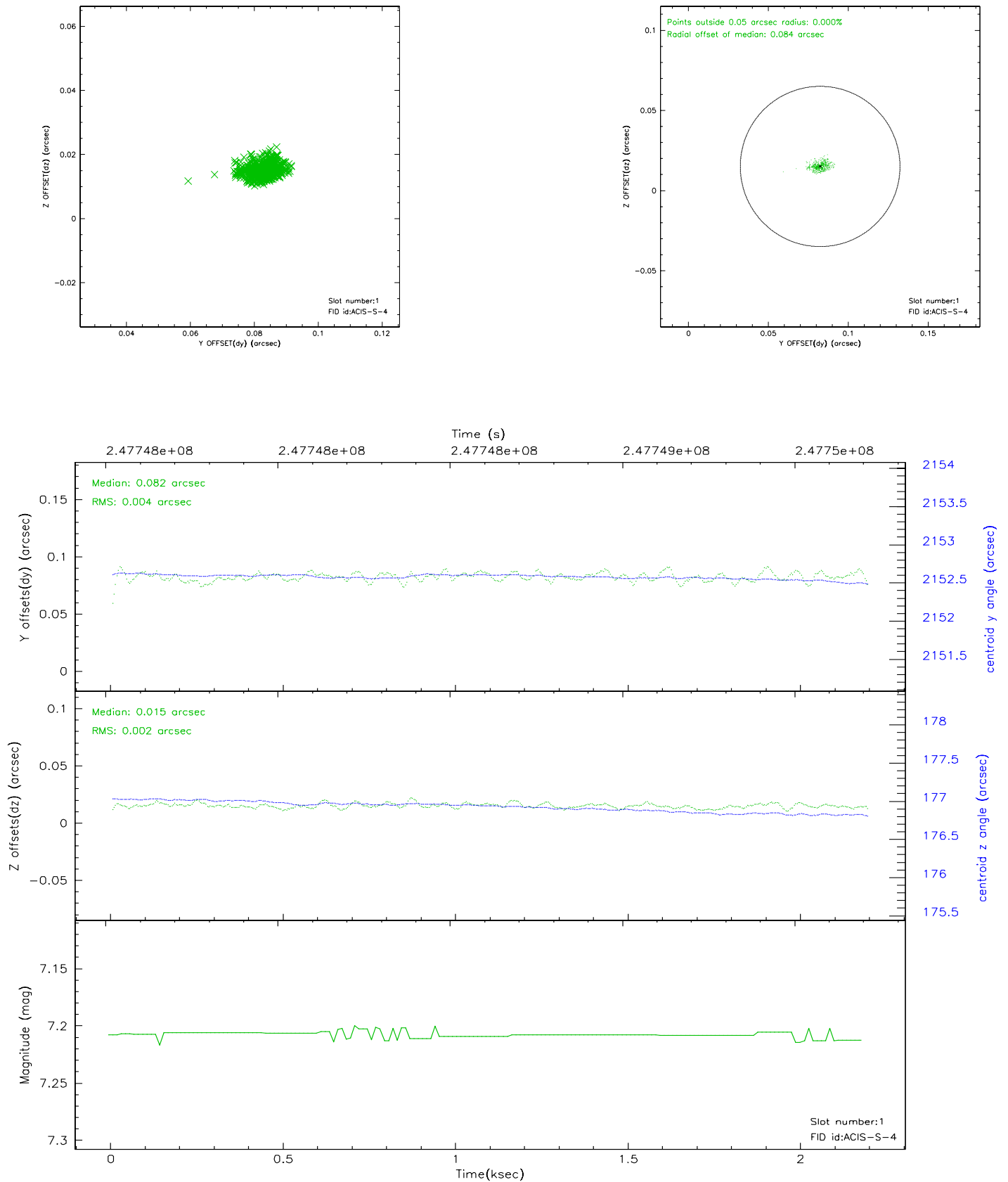


2.5 FID Slots

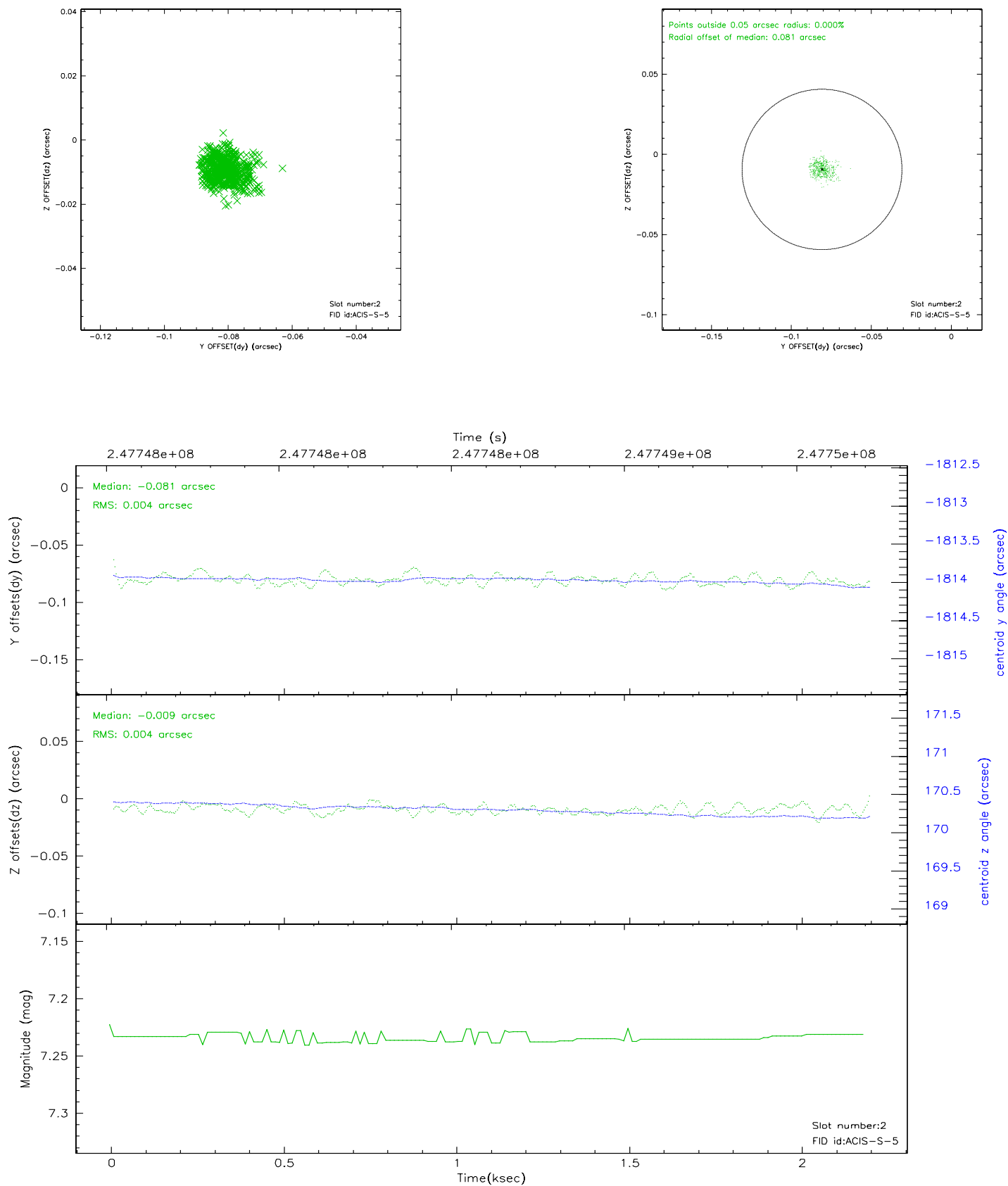
2.5.1 Slot 0



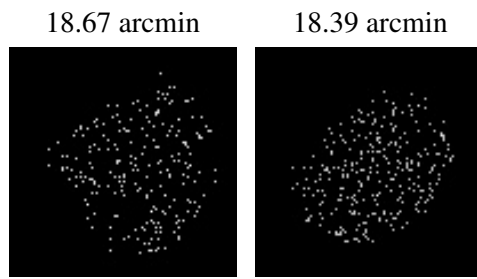
2.5.2 Slot 1



2.5.3 Slot 2



3 Point Sources



A Summary

A.1 Status

V&V Scientist	Beth Sundheim
V&V Date (YYYY-MM-DD)	2006.04.04
V&V Edition	1
V&V Disposition and Status	OK
V&V Charge Time	1.961599

A.2 Comments